

2 January 2019

Non-hotel Tourist Accommodation Occupancy Survey
November 2018. Provisional data

**Overnight stays in non-hotel tourist accommodation increase 1.5%
in November, as compared with the same month of 2017**

Overnight stays in non-hotel tourist accommodations (holiday dwellings, tourist campsites, rural tourism accommodation and youth hostels) exceeded 5.9 million in November, 1.5% more than in the same month of 2017. Resident overnight stays increased 19.6% while non-resident overnight stays decreased 4.3%.

The average stay stood at 5.1 overnight stays per traveller.

During the first 11 months of 2018, overnight stays decreased by 2.6% as compared with the same period of the previous year.

Travellers and overnight stays in collective non-hotel tourist accommodations during the month of November were:

November 2018	Arrivals	Overnight stays
Residents	633,250	1,727,495
EU Residents (excluding Spain)	439,852	3,604,171
Rest of the world	106,691	640,280
TOTAL	1,179,793	5,971,946

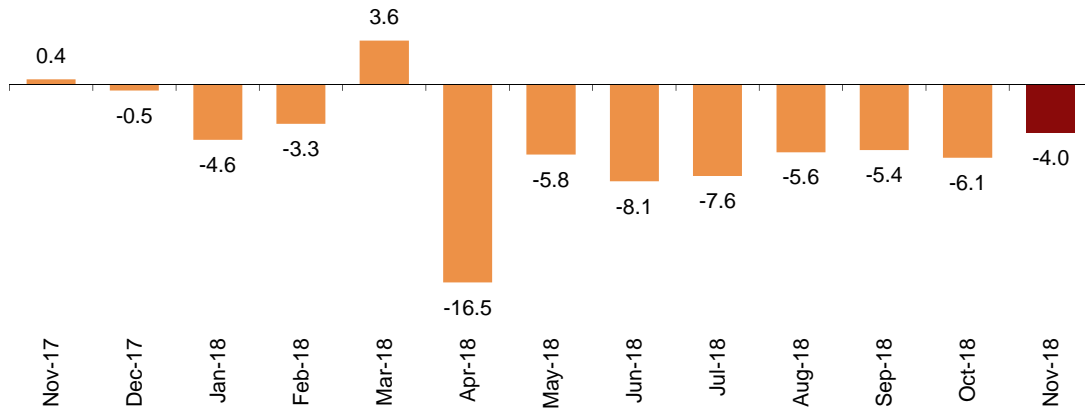
Holiday dwellings

Overnight stays in holiday dwellings decreased by 4.0% in November. Overnight stays by residents increased 11.0%, while those by non-residents decreased by 6.8%.

The average stay decreased 5.7% as compared with November 2017, standing at 6.2 overnight stays per traveller.

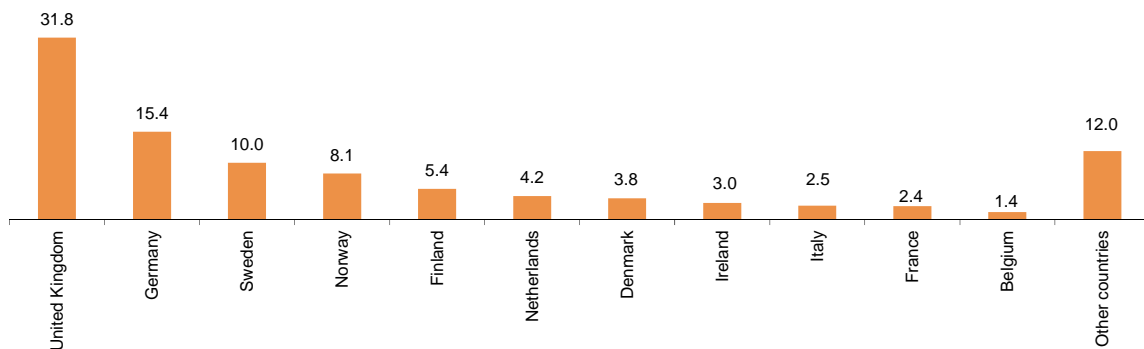
In November, 33.3% of the bed-places available for holiday dwellings were occupied, 1.8% less than in the same month of 2017. The weekend occupancy rate by bed-places stood at 37.1%, with a decrease of 0.3%.

Annual variation rate for overnight stays
Percentage



Non-resident overnight stays in holiday dwellings represented 81.9% of the total. The United Kingdom was the main country of origin, with more than one million overnight stays, 3.7% less than in November 2017. The following country of origin was Germany, with 511,580 overnight stays, 4.1% less.

Distribution of non-residents overnight stays. Main country of residence
Percentage



Canarias was the preferred holiday dwelling destination, with 2.5 million overnight stays and a decrease of 6.5% as compared with November 2017. These islands also reached the highest occupancy rate, with 84.0% of holiday dwellings offered.

By tourist areas, the island of Gran Canaria was the preferred destination, with 871,768 overnight stays. The island of Lanzarote registered the highest occupancy rate, with 87.5% of holiday dwellings offered.

The tourist sites with the highest number of overnight stays in November were San Bartolomé de Tirajana, Arona and Mogán.

Tourist campsites

Overnight stays at tourist campsites registered an increase of 12.2% in November as compared with the same month of the previous year. Resident overnight stays grew by 27.4%, and those of non-residents by 6.1%.

In November, 36.5% of the offered pitches were occupied, that is, 2.5% more than in the same month of 2017. The weekend occupancy rate by pitch reached 37.8%, with an annual increase of 1.0%.

67.2% of overnight stays on tourist campsites were made by non-residents. The United Kingdom was the main country of origin, with 35.1% of the overnight stays by non-residents, 7.6% more than in November 2017.

Annual variation rate for overnight stays

Percentage



Comunitat Valenciana was the preferred destination for tourist campsites, with 562,296 overnight stays, representing an annual increase of 10.6%. La Rioja reached the highest occupancy rate, with 60.9% of the pitches offered.

By tourist areas, Costa Blanca was the preferred destination, with 315,805 overnight stays and an occupancy rate of 78.0% of the pitches offered.

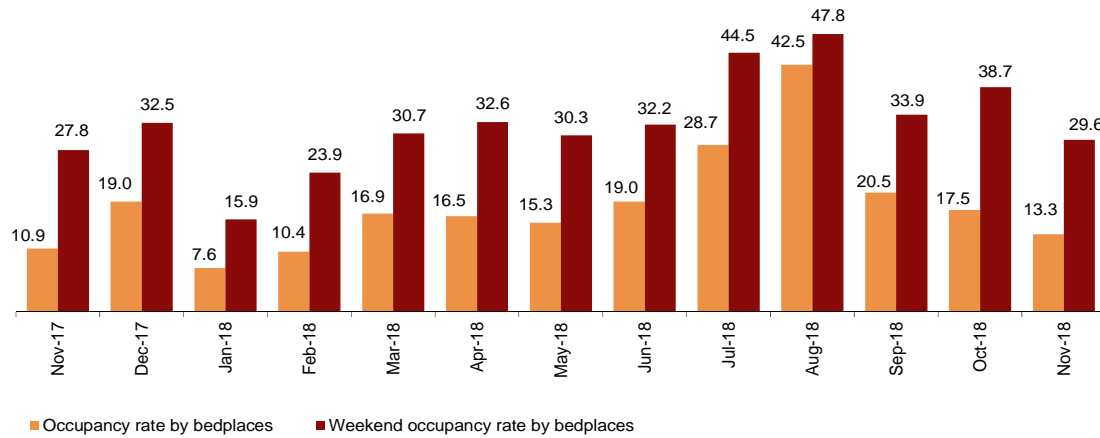
The tourist places with the most overnight stays were Benidorm, Cartagena and Marbella.

Rural tourism accommodation

Overnight stays in rural tourism accommodations presented an annual increase of 25.4% in November. Overnight stays by residents increased 31.9%, while those by non-residents decreased by 1.4%.

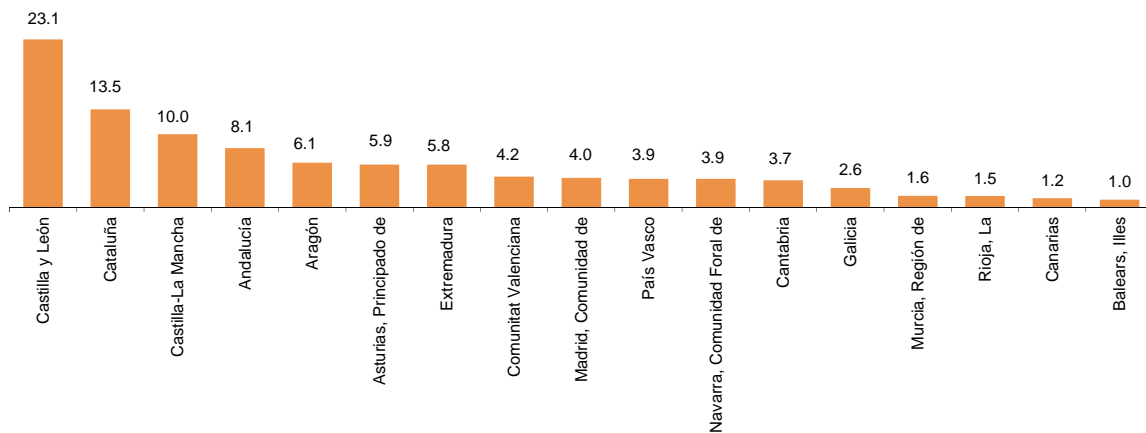
In rural tourism accommodation, 13.3% of the bed-places were occupied, 22.4% more than in November 2017. The weekend occupancy rate stood at 29.6%, with an annual increase of 6.2%.

Occupancy rate. Percentage



By Autonomous Community, Castilla y León was the preferred destination, with 123,669 overnight stays, 29.4% more than in November 2017. Canarias reached the highest occupancy rate, with 36.4% of the bed-places offered.

By tourist area, Pirineus was the main destination, with 27,015 overnight stays. The Corona Forestal Natural Park reached the highest occupancy rate, with 44.3% of the bed-places offered.



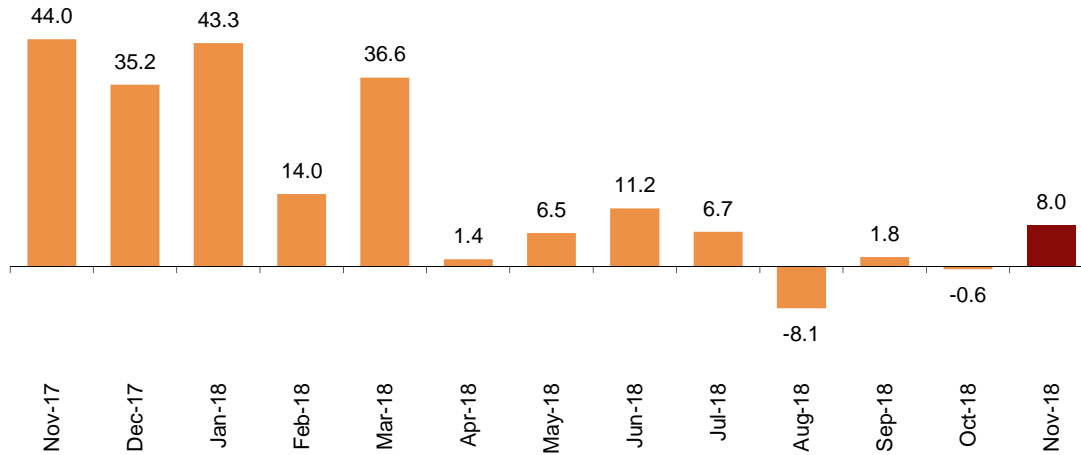
Distribution of overnight stays: residents Percentage

Youth Hostels

Overnight stays in hostels registered an annual increase of 8.0% in November. Resident overnight stays grew by 4.2%, and those of non-residents by 14.6%.

Annual variation rate for overnight stays

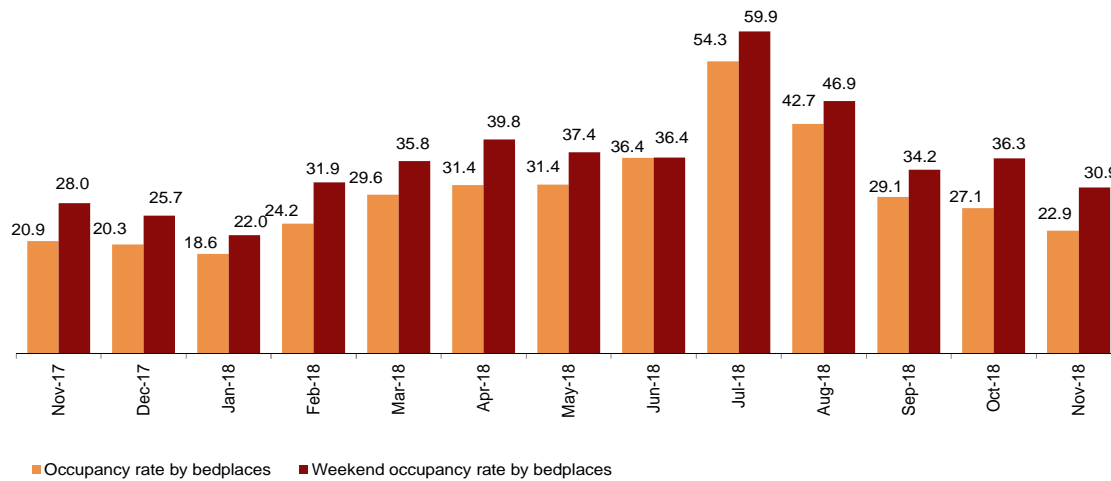
Percentage



22.9% of the available bed-places were occupied, 9.4% more than in November 2017. The weekend occupancy rate reached 30.9%, with a 10.5% increase.

Occupancy rate

Percentage



By Autonomous Community, Cataluña was the preferred destination, with 49,758 overnight stays, 5.6% more than in November 2017. Canarias reached the highest occupancy rate, with 54.2% of the bed-places offered.

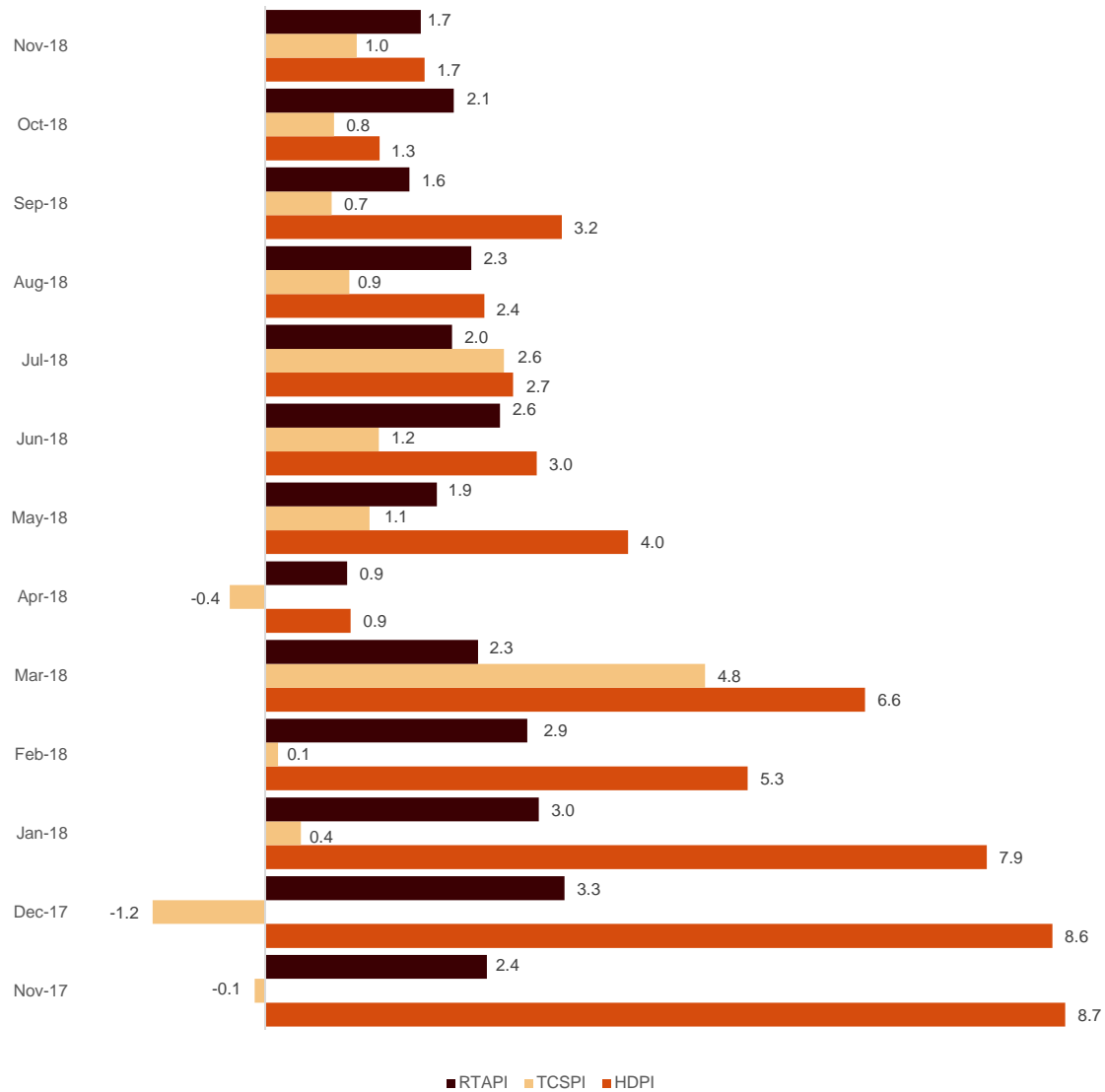
Price indices

The Holiday Dwelling Price Index (HDPI) increased 1.7%, as compared with November 2017. The rate for *tour operators and travel agencies*, which carried the greatest weight in the weighting structure for this month (59.4%), increased by 2.2%.

The Tourist Campsite Price Index (TCPI) increased by 1.0% in the annual rate. The *bungalow* rate, which had the greatest weight in the weighting structure in November (34.3%), did not vary with respect to the same month in 2017.

The Rural Tourism Accommodation Price Index (RTAPI) registered a 1.7% increase in November. The *weekend rate*, which accounted for 74.1% of the total weight, increased by 1.9% in the annual rate.

Prices Indices. Annual variation rate
Percentage



Evolution of travellers and overnight stays in all Spanish collective tourist accommodation

In November, overnight stays in all Spanish collective tourist accommodation (hotels¹, holiday dwellings, tourist campsites, rural tourism accommodation and youth hostels) increased by 3.4% in the annual rate. Resident overnight stays grew by 8.5%, and non-resident overnight stays by 0.7% as compared with November 2017.

The average stay decreased 3.2%, and stood at 3.2 overnight stays per traveller.

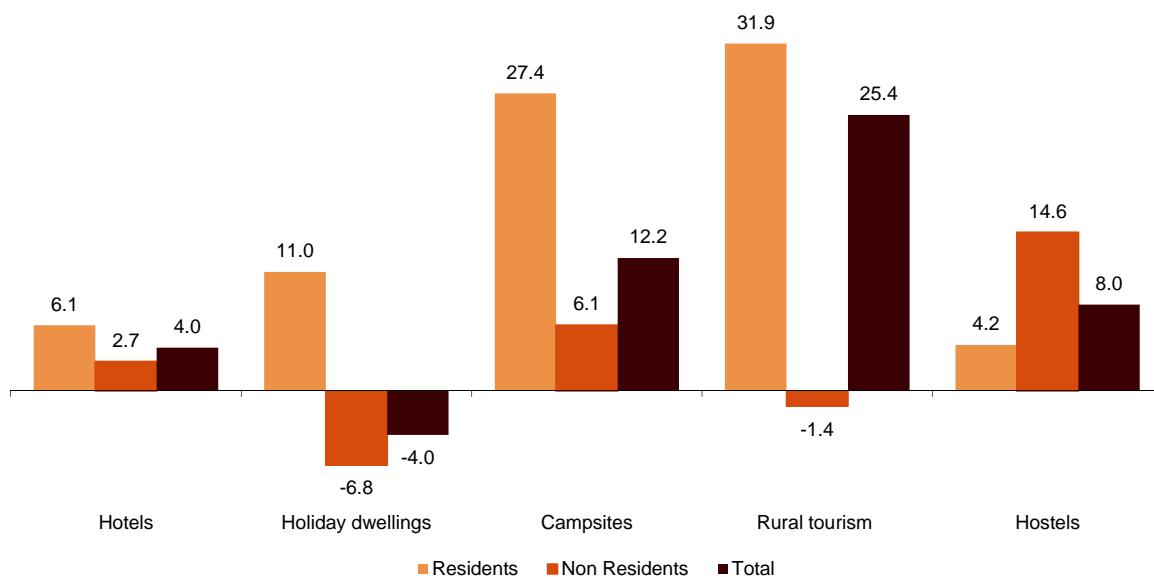
Travellers and overnight stays in collective tourist accommodation were:

November 2018	Holiday dwellings	Campsites	Rural T.	Hostels	Non-hotel	Hotels	Total
Arrivals	656,870	180,854	280,182	61,888	1,179,794	6,463,481	7,643,275
Residents	217,582	124,858	250,900	39,910	633,250	3,533,107	4,166,357
Non-residents	439,288	55,996	29,281	21,978	546,543	2,930,374	3,476,917
Overnight stays	4,056,587	1,140,955	617,889	156,514	5,971,945	18,236,555	24,208,500
Residents	733,716	374,734	522,296	96,749	1,727,495	7,130,814	8,858,309
Non-residents	3,322,871	766,221	95,593	59,766	4,244,451	11,105,741	15,350,192

Of the total number of overnight stays in collective tourist accommodation, 75% corresponded to hotels and 25% to non-hotel tourist accommodation.

Overnight stays in collective tourist accommodation. Annual variation rate

Percentage



The main countries of origin for all regulated tourist accommodation were the United Kingdom (with 25.3% of the total number of non-resident overnight stays), Germany (18.4%) and France (5.0%).

Canarias was the preferred destination, with over 8.0 million overnight stays (4.7% less than in November 2017). It was followed by Andalucía, with 3.5 million overnight stays (and an increase of 4.9%) and Cataluña, with over 2.9 million, (and an annual increase of 14.5%).

¹ The press release corresponding to Hotel Tourism Short-Term Trends was published on 21 December.

Revision and updating of data

Coinciding with today's publication, the INE has updated the data for November 2017 of the Holiday Dwelling Price Index (HDPI), the Tourist Campsite Price Index (TCPI) and the Rural Tourism Accommodation Price Index (RTAPI). On the other hand, the occupancy survey data published today is provisional and will be reviewed in the third quarter of next year.

Methodological note

The main objective of the Holiday Dwelling Occupancy Survey (HDOS) is to ascertain the behaviour of a series of variables that make it possible to describe the segment that occupies this type of accommodation within the tourist sector, both from the point of view of supply and demand.

The Holiday Dwelling Price Index (HDPI) is a statistical measure of the monthly evolution of the prices that holiday dwelling apply to their clients.

Type of operation: monthly continuous survey.

Population scope: holiday dwellings and/or companies operating holiday dwellings.

Geographical scope: the entire national territory, with the exception of Ceuta and Melilla where there are no establishments of this type.

Reference period of the results: the month.

Reference period of the information: The consultation of basic data refers to a fortnight of the month, chosen randomly, in such a way that among all the establishments they cover the complete month.

Type of sampling: stratified sampling by province and size of establishment, and for Canarias and Illes Balears stratified at island-size level.

Collection method: questionnaire filled in directly by the establishment.

For more information on these statistical operations, you can consult the [methodology and the standardised methodological report](#) for each of them in INEbase.

The main objective of the Campsite Occupancy Survey (COS) is to ascertain the behaviour of a series of variables that make it possible to describe the segment that occupies this type of accommodation within the tourist sector, both from the point of view of supply and demand.

The Tourist Campsite Price Index (TCPI) is a statistical measure of the monthly evolution of the prices that campsites apply to their clients.

Type of operation: monthly continuous survey.

Population scope: camping establishments.

Geographical scope: the entire national territory, with the exception of Ceuta and Melilla where there are no establishments of this type.

Reference period of the results: the month.

Reference period of the information: seven consecutive days of each month, chosen randomly in such a way that all the establishments cover the whole month.

Sample size: approximately 1200 establishments.

Type of sampling: comprehensive survey in all provinces.

Collection method: questionnaire filled in directly by the establishment.

For more information on these statistical operations, you can consult the [methodology and the standardised methodological report](#) for each of them in INEbase.

The main objective of the Rural Tourism Accommodation Occupancy Survey (RTAOS) is to ascertain the behaviour of a series of variables that make it possible to describe the fundamental characteristics of this type of accommodation within the tourist sector, both from the point of view of supply and demand.

The Rural Tourism Accommodation Price Index (RTAPI) is a statistical measure of the monthly evolution of the prices that entrepreneurs of this type of accommodation apply to their clients.

Type of operation: monthly continuous survey.

Population scope: rural tourism establishments registered as such in the corresponding register of each Autonomous Community.

Geographical scope: the entire national territory, with the exception of Ceuta and Melilla where there are no establishments of this type.

Reference period of the results: the month.

Reference period of the information: The consultation of basic data refers to all the days of the month.

Type of sampling: comprehensive survey in all provinces except those where the population size is large enough to take a sample.

Collection method: questionnaire filled in directly by the establishment.

For more information on these statistical operations, you can consult the [methodology and the standardised methodological report](#) for each of them in INEbase.

The main objective of the Hostels Occupancy Survey (HOS) is to ascertain the behaviour of a series of variables that make it possible to describe the fundamental characteristics of this type of accommodation within the tourist sector, both from the point of view of supply and demand.

For more information on this statistical operation, you can consult the [methodology and the standardised methodological report](#) in INEbase.

For further information see **INEbase:** www.ine.es/en/ Twitter: [@es_ine](https://twitter.com/es_ine)

All press releases at: www.ine.es/en/prensa/prensa_en.htm

Press office: Telephone numbers: (+34) 91 583 93 63 /94 08 – gprensa@ine.es

Information Area: Telephone number: (+34) 91 583 91 00 – www.ine.es/infoine/?L=1

Tourist Accommodation Occupancy Survey (Holiday Dwellings)

November 2018

Provisional data

2nd January 2019

1. Travellers, overnight stays and average stay by Autonomous Cities and Communities

Autonomous Cities and Communities	Travellers			Overnight stays			Average stay
	Total	Residents in Spain	Residents abroad	Total	Residents in Spain	Residents abroad	
TOTAL	656,870	217,582	439,288	4,056,587	733,716	3,322,871	6.18
Andalucía	136,047	59,433	76,614	517,471	134,720	382,751	3.80
Aragón	11,455	10,518	937	30,090	25,559	4,532	2.63
Asturias, Principado de	2,651	2,486	165	6,382	6,080	303	2.41
Balears, Illes	5,504	1,463	4,042	37,879	6,050	31,830	6.88
Canarias	297,446	28,873	268,573	2,518,974	150,853	2,368,120	8.47
Cantabria	11,170	10,618	553	30,914	28,472	2,442	2.77
Castilla y León	11,967	10,517	1,450	28,090	24,328	3,763	2.35
Castilla - La Mancha	8,330	8,000	329	25,513	21,972	3,540	3.06
Cataluña	32,890	16,628	16,263	172,251	88,967	83,284	5.24
Comunitat Valenciana	69,634	24,240	45,394	423,509	98,667	324,842	6.08
Extremadura	5,856	5,425	432	10,545	10,009	536	1.80
Galicia	4,903	4,058	845	12,891	11,003	1,887	2.63
Madrid, Comunidad de	40,111	20,601	19,510	143,623	66,898	76,725	3.58
Murcia, Región de	4,255	2,608	1,647	40,978	17,356	23,621	9.63
Navarra, Comunidad Foral de	5,467	4,749	718	21,126	15,948	5,178	3.86
País Vasco	6,707	4,940	1,767	30,092	20,734	9,358	4.49
Rioja, La	2,478	2,427	50	6,259	6,100	159	2.53
Ceuta	-	-	-	-	-	-	-
Melilla	-	-	-	-	-	-	-
Annual rate	1.78	15.83	-3.98	-4.02	10.95	-6.80	-5.71
Cumulative annual rate	-3.13	-0.17	-4.78	-6.16	-3.04	-7.21	-3.12

2. Capacity, occupancy and number of staff by Autonomous Cities and Communities

Autonomous Cities and Communities	Capacity		Level of occupancy				Employed personnel
	Estimated bedplaces	Estimated Holiday dwelling	Per bedplaces	Per bedplaces at weekend	Per Holiday dwelling	Per Holiday dwelling at weekend	
TOTAL	405,423	107,096	33.25	37.05	57.30	61.46	23,846
Andalucía	63,776	16,307	26.99	34.14	44.92	53.43	3,981
Aragón	8,135	1,868	12.30	23.98	20.28	34.09	525
Asturias, Principado de	3,752	978	5.67	12.09	8.57	15.86	251
Balears, Illes	3,756	1,015	33.60	37.03	58.54	61.28	413
Canarias	149,555	46,061	55.89	56.45	84.03	84.12	11,864
Cantabria	4,796	1,213	21.46	39.40	35.13	60.58	349
Castilla y León	6,002	1,371	15.44	30.88	25.77	44.97	505
Castilla - La Mancha	5,578	1,365	15.22	29.08	24.30	39.86	425
Cataluña	21,409	5,380	26.84	32.49	45.15	50.63	1,006
Comunitat Valenciana	105,601	22,186	13.37	15.65	28.00	32.23	2,363
Extremadura	2,161	516	16.27	31.99	23.74	45.22	189
Galicia	3,902	992	10.92	17.21	22.97	30.33	245
Madrid, Comunidad de	10,166	4,000	47.04	52.28	67.02	69.69	577
Murcia, Región de	8,517	1,901	16.04	17.72	34.63	37.66	239
Navarra, Comunidad Foral de	2,686	546	26.17	43.67	39.35	57.92	561
País Vasco	3,966	1,040	25.18	38.07	47.76	61.05	253
Rioja, La	1,665	357	12.52	29.29	23.24	46.34	102
Ceuta	-	-	-	-	-	-	-
Melilla	-	-	-	-	-	-	-
Annual rate	-2.25	-2.52	-1.75	-0.30	-1.58	-0.62	1.28
Cumulative annual rate	-1.39	-0.52	-4.77	-4.67	-4.55	-4.37	0.31

3. Travellers, overnight stays, capacity, occupancy, total number of staff with greater number of overnight stays¹

Provinces	Travellers		Overnight stays			Capacity		Level of occupancy			Employed personnel
	Residents in Spain	Residents abroad	Residents in Spain	Residents abroad	Average stay	Estimated bed-places	Estimated holiday dwelling	Per bed-places	Per Holiday dwelling	Per Holiday dwelling at weekend	
Palmas, Las	15,658	175,348	80,135	1,573,252	8.66	96,062	29,522	57.05	86.37	86.36	7,528
Santa Cruz de Tenerife	13,214	93,225	70,719	794,869	8.13	53,493	16,538	53.80	79.85	80.11	4,336
Málaga	18,352	47,236	44,694	291,249	5.12	37,884	9,466	29.52	50.94	56.28	2,474
Alicante\Alacant	12,355	33,106	57,540	274,183	7.30	74,942	16,278	14.75	30.48	34.30	1,741
Barcelona	9,222	14,591	71,076	75,801	6.17	9,533	2,861	52.15	73.63	76.99	535
Sevilla	17,861	18,938	40,569	48,474	2.42	6,521	1,906	45.15	69.15	83.34	511
Valencia\València	8,280	11,264	24,622	43,739	3.50	14,339	2,873	15.89	33.44	41.66	461
Granada	8,047	5,381	15,767	16,080	2.37	4,802	1,339	21.93	30.64	51.19	347
Castellón\Castelló	3,604	1,024	16,506	6,919	5.06	16,319	3,035	4.78	9.56	12.22	161
Cádiz	4,005	3,051	10,185	10,384	2.92	3,748	929	18.35	29.18	37.09	270
Gipúzkoa	2,556	1,238	10,071	6,400	4.34	2,226	550	24.53	38.76	53.37	143
Almería	1,568	428	4,213	11,324	7.78	5,601	1,290	9.24	17.10	19.89	112
Girona	4,079	1,063	9,295	4,150	2.61	7,469	1,591	6.00	11.71	18.34	324
Jaén	5,408	203	11,516	313	2.11	2,498	630	15.70	17.88	38.21	141
Huesca	4,757	217	10,693	721	2.29	4,905	1,073	7.74	11.63	24.77	251

¹ Provinces belonging to uniprovincial Autonomous Communities have not been included because they are reflected in previous tables.

4. Travellers, overnight stays, capacity, occupancy, total number of staff from tourist areas with greater number of overnight stays

Tourist Areas	Travellers		Overnight stays			Capacity		Level of occupancy			Employed personnel
	Residents in Spain	Residents abroad	Residents in Spain	Residents abroad	Average stay	Estimated bed-places	Estimated holiday dwelling	Per bed-places	Per Holiday dwelling	Per Holiday dwelling at weekend	
Isla de Gran Canaria	5,830	86,839	26,590	845,178	9.41	49,169	15,379	58.86	87.33	87.41	3,717
Isla de Tenerife	10,209	87,384	57,821	737,035	8.14	47,476	14,486	55.68	82.60	82.86	3,788
Isla de Lanzarote	6,165	63,392	35,574	506,032	7.79	31,327	9,338	57.30	87.49	87.55	2,614
Costa del Sol	14,694	45,161	37,524	286,515	5.41	35,830	8,900	30.11	52.66	57.55	2,366
Costa Blanca	12,001	31,730	55,886	264,308	7.32	71,912	15,700	14.84	30.61	34.60	1,689
Isla de Fuerteventura	3,663	25,117	17,971	222,041	8.34	15,566	4,806	50.81	81.14	80.71	1,196
Costa Barcelona	4,789	1,742	59,613	27,320	13.31	4,843	1,674	59.83	74.26	76.45	156
Barcelona	3,063	12,849	8,721	48,481	3.60	4,179	1,038	45.04	75.14	79.05	356
Isla de la Palma	1,610	3,227	6,258	32,684	8.05	2,645	933	48.78	70.00	69.69	284
Isla de Mallorca	1,153	3,956	4,570	31,476	7.06	3,398	902	35.34	62.16	64.53	402

5. Travellers, overnight stays, capacity, occupancy, total number of staff from tourist sites with greater number at overnights stays

Tourist sites	Travellers		Overnight stays			Capacity		Level of occupancy			Employed personnel
	Residents in Spain	Residents abroad	Residents in Spain	Residents abroad	Average stay	Estimated bed-places	Estimated holiday dwelling	Per bed-places	Per Holiday dwelling	Per Holiday dwelling at weekend	
San Bartolomé de Tirajana	3,190	51,875	14,396	521,803	9.74	31,783	9,920	55.91	85.11	85.09	2,351
Arona	3,112	39,399	23,038	332,257	8.36	19,981	6,301	59.14	81.58	81.70	1,637
Mogán	1,727	32,019	9,215	297,513	9.09	16,077	4,914	63.50	91.18	91.29	1,236
Tías	2,776	34,443	16,097	285,171	8.09	16,345	5,090	61.01	89.71	89.87	1,153
Adeje	1,407	25,655	8,071	220,776	8.46	14,404	4,064	52.78	87.39	87.25	987
Benidorm	5,970	22,923	25,307	152,840	6.17	21,049	5,166	28.21	53.24	62.08	618
Madrid	19,887	19,387	63,200	75,534	3.53	9,714	3,852	47.55	66.54	68.98	533
Teguiuse	3,070	16,339	17,637	119,343	7.06	8,130	2,451	55.97	85.58	85.83	680
Puerto de la Cruz	3,789	9,733	16,001	94,572	8.18	5,468	2,144	67.23	85.95	86.82	508
Pájara	542	7,499	2,679	83,743	10.75	5,027	1,785	56.11	81.63	80.86	452

6. Travellers and overnight stays by countries of residence

Countries	Travellers		Overnight stays	
	Total	%	Total	%
TOTAL	656,870	100.00	4,056,587	100.00
Residents in Spain	217,582	33.12	733,716	18.09
Residents abroad	439,288	66.88	3,322,871	81.91
Total residents abroad	439,288	100.00	3,322,871	100.00
Total residents in E.U (excluding Spain)	355,543	80.94	2,771,138	83.40
- Germany	49,009	11.16	511,580	15.40
- Austria	2,813	0.64	20,938	0.63
- Belgium	5,880	1.34	45,596	1.37
-Denmark	15,494	3.53	125,653	3.78
- Finland	18,970	4.32	180,050	5.42
- France	16,237	3.70	80,503	2.42
- Greece	631	0.14	2,267	0.07
- Ireland	14,358	3.27	99,511	2.99
- Italy	18,157	4.13	82,887	2.49
- Luxembourg	362	0.08	2,007	0.06
- Netherlands	17,044	3.88	138,928	4.18
- Poland	5,605	1.28	28,903	0.87
- Portugal	3,185	0.73	12,562	0.38
- United Kingdom	145,567	33.14	1,057,522	31.83
- Czech Republic	1,907	0.43	11,359	0.34
- Sweden	33,519	7.63	331,771	9.98
- Other EU countries	6,804	1.55	39,103	1.18
Norway	26,389	6.01	269,782	8.12
Russia	5,228	1.19	33,722	1.01
Switzerland	4,364	0.99	33,944	1.02
Other european countries	5,299	1.21	32,492	0.98
United States of America	10,092	2.30	34,948	1.05
Rest of America	11,516	2.62	63,899	1.92
African countries	4,091	0.93	18,569	0.56
Other countries	16,766	3.82	64,378	1.94

**Tourist Accommodation Occupancy Survey
Campsite Occupancy Survey (COS)**

November 2018

Provisional data

2nd January 2019

1. Travellers, overnight stays and average stay by category of establishment

Category	Travellers			Overnight stays			Average stay
	Total	Residents in Spain	Residents abroad	Total	Residents in Spain	Residents abroad	
TOTAL	180,854	124,858	55,996	1,140,955	374,734	766,221	6.31
Luxury and first-class	68,092	46,269	21,823	460,285	160,839	299,446	6.76
Second-class	91,729	61,894	29,835	613,976	177,736	436,240	6.69
Third-class	21,033	16,695	4,338	66,693	36,159	30,535	3.17
Annual rate	14.22	20.80	1.86	12.23	27.38	6.06	-1.75
Cumulative annual rate	0.02	-0.58	1.19	1.94	1.25	2.68	1.91

2. Open establishments, capacity, occupancy and number of staff by category of establishments

Category	Estimated open establishments	Capacity		Occupied pitches	Occupancy rate per pitch	Weekend occupancy rate	Employed personnel
		Estimated bedplaces	Estimated pitches				
TOTAL	496	300,815	95,688	1,047,886	36.50	37.84	3,463
Luxury and first-class	128	124,365	38,507	406,138	35.16	35.65	1,473
Second-class	289	154,616	49,779	560,250	37.52	39.38	1,745
Third-class	79	21,834	7,402	81,498	36.70	38.41	245
Annual rate	3.37	3.95	3.98	6.55	2.47	1.03	6.83
Cumulative annual rate	0.01	1.14	0.64	1.41	0.73	-0.21	3.78

3. Travellers, overnight stays and average stay by Autonomous Cities and Communities

Autonomous cities and communities	Travellers			Overnight stays			Average stay
	Total	Residents in Spain	Residents abroad	Total	Residents in Spain	Residents abroad	
TOTAL	180,854	124,858	55,996	1,140,955	374,734	766,221	6.31
Andalucía	28,354	13,919	14,435	180,810	48,813	131,997	6.38
Aragón	6,020	4,855	1,165	15,369	12,355	3,014	2.55
Asturias, Principado de	1,156	888	268	2,427	2,023	405	2.10
Balears, Illes	-	-	-	-	-	-	-
Canarias	-	-	-	-	-	-	-
Cantabria	1,662	1,658	4	4,429	4,397	32	2.66
Castilla y León	4,202	2,277	1,925	7,872	5,128	2,744	1.87
Castilla - La Mancha	1,701	1,524	177	3,536	3,219	316	2.08
Cataluña	62,802	53,899	8,904	163,973	118,547	45,426	2.61
Comunitat Valenciana	38,761	19,897	18,864	562,296	91,760	470,536	14.51
Extremadura	2,540	1,420	1,120	6,285	3,907	2,378	2.47
Galicia	313	180	134	568	246	322	1.81
Madrid, Comunidad de	12,185	10,660	1,525	48,187	42,243	5,945	3.95
Murcia, Región de	7,032	3,468	3,563	103,341	11,775	91,565	14.70
Navarra, Comunidad Foral de	2,313	-	-	9,149	-	-	3.96
País Vasco	4,671	2,748	1,922	11,772	7,714	4,057	2.52
Rioja, La	4,935	4,597	338	11,776	11,190	586	2.39
Ceuta	-	-	-	-	-	-	-
Melilla	-	-	-	-	-	-	-

4. Open establishments, capacity, occupancy and number of staff by autonomous cities and communities

Autonomous cities and communities	Estimated open establishments	Capacity		Occupied pitches	Occupancy rate per pitch	Weekend occupancy rate	Employed personnel
		Estimated bedplaces	Estimated pitches				
TOTAL	496	300,815	95,688	1,047,886	36.50	37.84	3,463
Andalucía	97	59,729	19,032	135,622	23.75	24.44	714
Aragón	43	15,847	5,106	30,005	19.59	22.80	180
Asturias, Principado de	7	4,201	1,195	7,297	20.36	24.08	27
Balears, Illes	-	-	-	-	-	-	-
Canarias	-	-	-	-	-	-	-
Cantabria	7	4,049	1,177	14,976	42.42	41.97	15
Castilla y León	25	9,523	3,108	19,912	21.36	25.03	70
Castilla - La Mancha	16	5,139	1,693	13,847	27.26	29.63	55
Cataluña	96	64,933	20,797	204,554	32.79	35.58	742
Comunitat Valenciana	107	71,479	22,054	369,693	55.88	57.86	936
Extremadura	9	3,195	1,148	8,051	23.39	30.63	56
Galicia	16	4,575	1,531	5,031	10.95	10.18	45
Madrid, Comunidad de	19	17,699	5,994	91,927	51.12	45.79	216
Murcia, Región de	17	14,818	4,881	65,012	44.40	48.19	186
Navarra, Comunidad Foral de	13	7,601	2,115	18,068	28.48	29.98	71
País Vasco	13	6,748	2,043	13,867	22.63	28.78	72
Rioja, La	7	7,444	2,292	41,838	60.86	59.54	53
Ceuta	-	-	-	-	-	-	-
Melilla	-	-	-	-	-	-	-

5. Travellers and overnight stays, average stay, capacity, occupancy and number of staff by provinces with the greatest number of overnight stays¹

Provinces	Travellers		Overnight stays		Average stay	Estimated open establishments	Estimated pitches	Occupancy rate per pitch	Employed personnel
	Residents in Spain	Residents abroad	Residents in Spain	Residents abroad					
	Spain		Spain						
Alicante\Alacant	5,600	9,486	34,972	337,442	24.69	46	10,405	71.16	448
Castellón\Castelló	4,704	5,303	27,961	93,598	12.15	34	6,289	39.73	268
Málaga	2,063	4,743	16,911	72,601	13.15	28	4,716	38.97	213
Barcelona	21,593	3,296	45,572	25,377	2.85	24	6,954	34.15	256
Valencia\València	9,593	4,074	28,827	39,496	5.00	27	5,359	45.16	221
Girona	17,486	4,327	35,406	16,231	2.37	35	6,726	29.47	249
Almería	1,298	2,600	7,993	26,984	8.97	17	2,584	30.70	106
Tarragona	9,341	1,170	22,198	3,454	2.44	17	3,722	24.43	140
Cádiz	1,836	2,418	4,421	13,395	4.19	12	2,854	16.53	125
Granada	1,650	2,173	3,945	12,778	4.37	17	2,374	20.56	92
Lleida	5,478	111	15,371	364	2.82	20	3,395	45.73	97
Huelva	3,920	830	9,231	2,888	2.55	7	3,926	13.90	82
Huesca	2,738	359	6,464	745	2.33	24	3,356	24.45	116
Gipuzkoa	1,671	1,299	3,745	2,330	2.05	7	1,410	16.74	40
Araba\Álava	623	579	2,998	1,639	3.86	3	325	44.50	25

¹ Provinces belonging to uniprovincial Autonomous Communities have not been included because they are reflected in previous tables.

6. Travellers, overnight stays, average stay, open establishments, capacity, occupancy and number of staff from tourist areas with the greatest number of overnight stays

Tourist areas	Travellers		Overnight stays		Average stay	Estimated open establishments	Estimated pitches	Occupancy rate per pitch	Employed personnel
	Residents in Spain	Residents abroad	Residents in Spain	Residents abroad					
	Costa Blanca	2,737	7,592	21,816					
Costa de Castellón	3,775	4,882	23,031	91,295	13.21	29	5,801	40.31	249
Costa Cálida	1,231	2,754	4,847	84,853	22.51	9	3,818	48.04	151
Costa del Sol	1,119	3,785	15,333	69,792	17.36	14	3,468	46.90	162
Costa Barcelona	13,104	3,223	28,743	25,269	3.31	11	5,065	31.04	171
Costa Valencia	4,839	2,572	17,783	34,282	7.03	12	3,426	49.14	141
Pirineus	19,322	117	41,728	406	2.17	39	6,035	44.75	207
Costa Brava	8,768	4,295	17,436	15,968	2.56	21	4,840	23.93	185
Costa de Almería	1,030	2,481	7,614	24,314	9.09	14	2,254	29.98	88
Costa Daurada	8,550	539	18,781	1,616	2.24	10	2,692	28.20	100
Costa de la Luz (Cádiz)	1,294	1,868	3,486	12,031	4.91	9	2,287	16.94	107
Costa de la Luz (Huelva)	3,627	817	8,697	2,865	2.60	6	3,855	13.20	78
Costa Tropical	342	872	1,721	8,275	8.23	6	1,198	21.42	36
Pirineo Aragonés	2,633	322	6,283	686	2.36	20	3,122	22.20	109
Costa de Gipuzkoa	1,671	1,299	3,745	2,330	2.05	6	1,238	17.37	37

7. Travellers, overnight stays, average stay, open establishments, capacity, occupancy and number of staff from tourist sites with the greatest number at overnights stays

Tourist sites	Travellers		Overnight stays		Average stay	Estimated open establishments	Estimated pitches	Occupancy rate per pitch	Employed personnel
	Residents in Spain	Residents abroad	Residents in Spain	Residents abroad					
	Benidorm	631	1,955	6,171					
Cartagena	153	1,267	1,381	53,359	30.00	3	2,555	36.97	89
Marbella	608	1,504	11,574	27,713	18.60	3	1,313	45.87	69
Peñíscola/Peñíscola	1,839	1,374	20,942	11,050	9.95	8	1,340	47.76	77
Oliva	110	1,302	3,940	25,362	20.75	5	1,267	41.57	86
Cabanes	252	1,060	578	24,719	19.28	4	1,215	35.94	57
Benicasim/Benicàssim	142	1,702	733	24,264	13.56	4	872	42.94	50
Calp	218	1,311	1,133	22,427	15.41	5	463	88.97	23
Vélez-Málaga	68	1,036	771	21,960	20.59	4	839	55.61	54
Campello, el	219	948	3,156	10,548	11.74	5	382	71.66	32
Villajoyosa/Vila Joiosa, la	110	933	1,862	11,750	13.05	3	387	65.06	16
Blanes	3,349	371	7,654	2,373	2.69	5	1,610	33.39	74

8. Travellers and overnight stays by countries of residence

Countries	Travellers		Overnight stays	
	Total	%	Total	%
TOTAL	180,854	100.00	1,140,955	100.00
Residents in Spain	124,858	69.04	374,734	32.84
Residents abroad	55,996	30.96	766,221	67.16
TOTAL residents abroad	55,996	100.00	766,221	100.00
TOTAL residents in EU (excluding Spain)	51,219	91.47	726,365	94.80
- Germany	14,306	25.55	185,049	24.15
- Austria	798	1.43	6,129	0.80
- Belgium	2,178	3.89	39,009	5.09
- Denmark	385	0.69	8,779	1.15
- Finland	490	0.88	7,215	0.94
- France	8,401	15.00	59,818	7.81
- Greece	24	0.04	126	0.02
- Ireland	527	0.94	6,763	0.88
- Italy	709	1.27	6,078	0.79
- Luxembourg	149	0.27	1,978	0.26
- Netherlands	6,396	11.42	97,034	12.66
- Poland	216	0.39	1,548	0.20
- Portugal	688	1.23	2,598	0.34
- United Kingdom	13,328	23.80	268,806	35.08
- Czech Republic	182	0.33	1,510	0.20
- Sweden	1,735	3.10	29,038	3.79
- Other EU countries	707	1.26	4,885	0.64
Norway	469	0.84	10,912	1.42
Russia	119	0.21	811	0.11
Switzerland	2,384	4.26	18,476	2.41
Other European countries	357	0.64	1,270	0.17
United States of America	187	0.33	1,013	0.13
Rest of America	487	0.87	2,403	0.31
African countries	41	0.07	250	0.03
Other countries	734	1.31	4,721	0.62

COS (TABLES ANNEX) - November 2018. Provisional data (4/4)

**Tourist accommodation occupancy survey
(Rural tourist accommodation)**

November 2018

Provisional data

2nd January 2019

1. Number of travellers, overnight stays and average stay by Autonomous City and Community

Autonomous Communities	Number of travellers			Number of overnight stays			Average stay
	Total	Residents In Spain	Residents abroad	Total	Residents In Spain	Residents abroad	
TOTAL	280,182	250,900	29,281	617,889	522,296	95,593	2.21
Andalucía	25,739	20,697	5,042	64,449	42,341	22,108	2.50
Aragón	13,045	12,613	431	33,206	31,935	1,271	2.55
Asturias, Principado de	12,826	12,244	582	31,752	30,559	1,193	2.48
Balears, Illes	7,940	2,480	5,460	21,748	5,318	16,431	2.74
Canarias	7,939	2,363	5,576	37,104	6,232	30,872	4.67
Cantabria	9,518	9,272	246	19,637	19,187	450	2.06
Castilla y León	60,106	58,141	1,965	123,669	120,487	3,183	2.06
Castilla-La Mancha	26,984	25,854	1,130	53,822	52,284	1,537	1.99
Cataluña	38,177	36,404	1,773	74,063	70,279	3,784	1.94
Comunitat Valenciana	11,439	10,533	906	25,292	21,855	3,438	2.21
Extremadura	16,587	15,436	1,151	32,808	30,537	2,272	1.98
Galicia	9,935	8,515	1,420	16,279	13,801	2,478	1.64
Madrid, Comunidad de	11,656	11,302	354	21,428	21,005	423	1.84
Murcia, Región de	4,441	3,968	473	9,544	8,104	1,440	2.15
Navarra, Comunidad Foral de	10,217	8,565	1,651	23,008	20,257	2,750	2.25
País Vasco	9,908	8,840	1,068	22,152	20,288	1,864	2.24
Rioja, La	3,726	3,673	53	7,928	7,828	100	2.13
Ceuta	-	-	-	-	-	-	-
Melilla	-	-	-	-	-	-	-
Annual rate	23.07	24.92	9.24	25.39	31.94	-1.38	1.88
Cumulative annual rate	5.35	3.82	11.28	3.70	1.54	9.16	-1.57

2. Open rural establishments, bed-places, occupancy rates and employed personnel by Autonomous City and Community

Autonomous Communities	Estimated open rural establishments	Estimated bed-places	Occupancy rate			Employed personnel
			Of bed-places	Of bed-places at weekend	Of bedrooms	
TOTAL	16,234	153,864	13.34	29.55	16.67	22,562
Andalucía	2,097	17,939	11.96	24.97	15.91	3,195
Aragón	1,155	9,104	12.09	27.25	13.75	1,301
Asturias, Principado de	1,286	12,496	8.46	15.77	10.27	1,635
Balears, Illes	171	3,043	23.61	25.87	29.65	856
Canarias	533	3,383	36.40	36.94	53.09	788
Cantabria	360	5,712	11.44	27.58	13.46	551
Castilla y León	3,611	31,429	13.09	32.57	15.86	4,752
Castilla-La Mancha	1,710	14,839	12.05	31.52	13.71	2,189
Cataluña	1,971	17,569	14.01	37.62	17.43	2,531
Comunitat Valenciana	834	10,159	8.29	17.83	12.53	1,158
Extremadura	608	7,283	15.00	32.72	19.34	839
Galicia	440	5,611	9.63	21.29	10.54	726
Madrid, Comunidad de	228	3,598	19.80	41.40	28.14	524
Murcia, Región de	143	2,236	14.19	34.55	18.14	229
Navarra, Comunidad Foral de	616	4,382	17.41	36.37	22.37	746
País Vasco	357	3,962	18.51	37.72	22.01	413
Rioja, La	115	1,119	23.21	58.87	23.49	129
Ceuta	-	-	-	-	-	-
Melilla	-	-	-	-	-	-
Annual rate	1.46	2.32	22.43	6.23	21.10	3.73
Cumulative annual rate	1.52	2.71	0.94	-0.93	0.56	4.57

3. Number of travellers, overnight stays and average stay in Provinces with the greatest number of overnight stays¹

Provinces	Number of travellers			Number of overnight stays			Average stay
	Total	Residents In Spain	Residents abroad	Total	Residents In Spain	Residents abroad	
Girona	16,857	16,002	855	32,297	30,629	1,669	1.92
Santa Cruz de Tenerife	5,719	1,572	4,147	28,040	4,187	23,854	4.90
Cáceres	13,736	12,730	1,006	27,458	25,531	1,926	2.00
Málaga	7,241	4,495	2,746	25,805	9,861	15,943	3.56
Barcelona	12,180	11,606	574	23,812	22,645	1,167	1.96
Ávila	11,067	10,961	106	22,306	22,102	204	2.02
Segovia	11,484	11,299	185	22,210	21,947	264	1.93
Huesca	6,365	6,171	194	18,231	17,712	519	2.86
Soria	7,647	7,561	86	17,257	17,115	143	2.26
Burgos	7,010	6,649	362	14,776	14,276	501	2.11
Salamanca	6,430	6,254	176	13,202	12,810	392	2.05
Cuenca	6,222	5,929	293	12,873	12,358	516	2.07
Toledo	6,663	6,143	520	12,195	11,594	601	1.83
Guadalajara	5,711	5,460	251	12,072	11,742	331	2.11
Lleida	6,349	6,212	137	12,068	11,864	204	1.90

¹ Provinces belonging to uniprovincial Autonomous Communities have not been included because they are reflected in previous tables.

4. Open rural establishments, bed-places, occupancy rates and employed personnel in Provinces with the highest number of overnight stays¹

Provinces	Estimated open rural establishments	Estimated bed-places	Occupancy rate			Employed personnel
			Of bed-places	Of bed-places at weekend	Of bedrooms	
Girona	641	6,385	16.83	45.53	19.64	685
Santa Cruz de Tenerife	434	2,584	36.06	36.17	53.90	616
Cáceres	496	5,926	15.42	33.17	20.41	657
Málaga	1,084	7,548	11.39	19.51	15.80	1,536
Barcelona	558	4,948	15.96	43.20	22.13	891
Ávila	811	6,357	11.69	33.20	13.68	1,000
Segovia	459	4,230	17.45	47.85	20.27	637
Huesca	620	4,745	12.75	26.95	13.98	720
Soria	340	3,210	17.83	43.02	20.50	397
Burgos	393	3,800	12.95	34.07	15.58	455
Salamanca	519	4,251	10.30	22.18	13.60	635
Cuenca	331	3,247	13.15	33.84	14.73	456
Toledo	235	2,604	15.56	39.72	19.93	298
Guadalajara	245	2,724	14.74	35.32	15.90	352
Lleida	529	3,976	10.10	26.47	12.66	660

¹ Provinces belonging to uniprovincial Autonomous Communities have not been included because they are reflected in previous tables.

5. Number of travellers, overnight stays, average stay, capacity and occupancy rates in areas with the highest number of overnight stays

Areas	Number of travellers		Number of overnight stays			Capacity		Occupancy rate		
	Residents in Spain	Residents abroad	Residents in Spain	Residents abroad	Average stay	Estimated open rural establish.	Estimated bed-places	Of bed-places	Of bed-places at weekend	Of bedrooms
Pirineus	13,354	161	26,657	358	2.00	769	6,442	13.93	37.68	16.22
Costa Brava	9,802	821	18,746	1,613	1.92	389	3,897	17.40	47.77	20.04
Isla de Mallorca	1,656	5,155	3,989	15,706	2.89	151	2,732	23.80	25.56	30.32
Pirineo Navarro	7,152	1,568	16,742	2,416	2.20	523	3,587	17.71	36.34	23.22
Extremadura Norte	8,829	177	18,403	427	2.09	335	4,011	15.64	33.93	20.97
Isla de Tenerife	1,210	2,632	2,116	12,155	3.71	107	1,189	39.80	39.55	51.98
Pirineo Aragonés	5,174	171	13,274	472	2.57	590	4,521	10.11	23.51	11.81
P.Natural de Corona Forestal	1,048	2,234	1,698	10,112	3.60	75	884	44.32	43.79	57.63
P.Nacional Teide	918	2,130	1,532	9,277	3.55	67	814	43.98	43.07	57.03
Isla de La Palma	187	930	1,062	8,493	8.55	230	884	36.04	35.76	62.75
P. Nacional Sierra de Guadarrama	5,849	249	9,155	322	1.55	116	1,674	18.85	42.74	23.97
P.Nacional Picos de Europa	3,927	239	9,043	379	2.26	283	2,416	12.99	21.20	16.36
Costa Verde	3,687	57	8,702	123	2.36	456	4,807	6.12	13.05	8.03
P.Natural Sierras de Tejeda, Almijara y Alhama	466	1,151	787	6,323	4.40	355	2,042	11.61	12.13	21.65
Costa Barcelona	3,264	365	6,043	625	1.84	143	1,286	17.22	41.84	29.95

6. Number of travellers, overnight stays, average stay, capacity, occupancy rates and employed personnel per rural house by Autonomous City and Community²

Autonomous Communities	Number of travellers		Number of overnight stays			Capacity		Occupancy rate		Employed personnel
	Residents in Spain	Residents abroad	Residents in Spain	Residents abroad	Average stay	Estimated open rural establish.	Estimated bed-places	Of bed-places	Of bed-places at weekend	
TOTAL	185,787	19,045	396,210	67,936	2.27	14,180	117,878	13.08	30.23	18,236
Andalucía	20,560	4,868	42,104	21,798	2.51	2,094	17,785	11.97	24.92	3,177
Aragón	10,802	358	27,582	1,063	2.57	930	7,193	13.19	29.43	1,055
Asturias, Principado de	5,527	192	12,597	389	2.27	810	5,332	8.11	16.65	941
Balears, Illes	1,674	3,106	3,683	9,080	2.67	94	1,391	30.12	33.68	294
Canarias	731	2,640	3,220	19,406	6.71	503	2,529	29.72	29.78	620
Cantabria	3,451	34	7,544	56	2.18	197	2,713	9.33	22.51	259
Castilla y León	38,148	349	86,107	837	2.26	3,246	23,813	12.14	31.86	3,826
Castilla-La Mancha	24,924	1,107	50,551	1,505	2.00	1,681	14,085	12.28	32.07	2,152
Cataluña	36,404	1,773	70,279	3,784	1.94	1,971	17,569	14.01	37.62	2,531
Comunitat Valenciana	7,399	734	16,876	2,688	2.41	782	7,088	9.19	19.72	999
Extremadura	8,144	348	15,360	483	1.87	387	3,717	14.19	34.34	510
Galicia	5,783	889	9,505	1,726	1.68	330	4,007	9.31	21.49	486
Madrid, Comunidad de	2,197	49	5,142	49	2.31	83	947	18.25	36.66	93
Murcia, Región de	3,108	337	7,039	1,225	2.40	132	1,914	14.35	36.96	188
Navarra, Comunidad Foral de	8,549	1,648	20,220	2,745	2.25	614	4,368	17.44	36.42	739
País Vasco	4,711	559	10,574	1,000	2.20	213	2,308	16.61	35.14	239
Rioja, La	3,673	53	7,828	100	2.13	115	1,119	23.21	58.87	129
Ceuta	-	-	-	-	-	-	-	-	-	-
Melilla	-	-	-	-	-	-	-	-	-	-

² To facilitate the comparability between data from different Autonomous Communities (and because of the different regulation and different characteristics),

a group called rural house has been created, with those establishments with similar typology (location, capacity, etc...).

The variables included in the previous table have been estimated with that type of establishments.

7. Travellers and overnight stays by country of residence

Results by countries	Travellers		Overnight stays	
	Total	%	Total	%
TOTAL	280,182	100.00	617,889	100.00
Residents in Spain	250,900	89.55	522,296	84.53
Residents abroad	29,281	10.45	95,593	15.47
Total Residents abroad	29,281	100.00	95,593	100.00
Total Residents in EU (excluding Spain)	20,737	70.82	75,528	79.01
- Germany	5,975	20.41	30,655	32.07
- Belgium	967	3.30	4,404	4.61
- France	3,448	11.78	7,591	7.94
- Italy	795	2.72	2,221	2.32
- Netherlands	1,668	5.70	4,979	5.21
- Portugal	615	2.10	1,295	1.35
- United Kingdom	3,918	13.38	15,380	16.09
Switzerland	642	2.19	2,403	2.51
Other European countries	4,438	15.16	11,850	12.40
United States of America	1,075	3.67	2,755	2.88
Other countries	5,741	19.60	12,060	12.62

Tourist Accommodation Occupancy Survey Hostels Occupancy Survey (HOS)

November 2018

Provisional data

2nd January 2019

1. Travellers, overnight stays and average stay by Autonomous Cities and Communities

Autonomous cities and communities	Travellers			Overnight stays			Average stay
	Total	Residents in Spain	Residents abroad	Total	Residents in Spain	Residents abroad	
TOTAL	61,888	39,910	21,978	156,514	96,749	59,766	2.53
Andalucía	9,119	7,810	1,309	33,615	30,148	3,467	3.69
Aragón	1,810	1,683	127	4,532	3,475	1,057	2.50
Asturias, Principado de	118	115	3	182	179	3	1.54
Balears, Illes	-	-	-	-	-	-	-
Canarias	4,370	2,034	2,335	11,286	4,250	7,035	2.58
Cantabria	728	716	12	1,593	1,579	14	2.19
Castilla y León	2,924	2,752	172	5,625	5,332	293	1.92
Castilla - La Mancha	2,458	2,392	66	5,051	4,953	98	2.05
Cataluña	19,983	9,989	9,994	49,758	20,679	29,079	2.49
Comunitat Valenciana	6,693	3,532	3,161	16,346	7,295	9,051	2.44
Extremadura	529	503	26	899	864	35	1.70
Galicia	-	-	-	-	-	-	-
Madrid, Comunidad de	6,420	3,030	3,390	11,284	5,445	5,839	1.76
Murcia, Región de	-	-	-	-	-	-	-
Navarra, Comunidad Foral de	872	832	40	2,244	2,169	75	2.57
País Vasco	4,848	3,532	1,316	11,441	7,936	3,505	2.36
Rioja, La	431	431	0	802	802	0	1.86
Ceuta	-	-	-	-	-	-	-
Melilla	-	-	-	-	-	-	-
Annual rate	2.21	-5.03	18.64	7.96	4.23	14.60	5.62
Cumulative annual rate	6.40	10.08	-0.64	6.92	11.30	-2.06	0.48

2. Open establishments, capacity, occupancy and number of staff by autonomous cities and communities

Autonomous cities and communities	Capacity		Occupancy rate		Employed personnel
	Estimated open establishments	Estimated bed-places	Of bed-places	Of bed-places at weekend	
TOTAL	221	22,796	22.89	30.89	1,532
Andalucía	17	3,449	32.49	38.34	228
Aragón	18	1,515	9.97	16.43	71
Asturias, Principado de	4	321	1.89	1.94	39
Balears, Illes	-	-	-	-	-
Canarias	30	694	54.17	65.57	69
Cantabria	7	492	10.79	11.45	29
Castilla y León	22	2,061	9.10	18.96	118
Castilla - La Mancha	22	2,245	7.50	14.86	74
Cataluña	36	5,042	32.90	40.87	292
Comunitat Valenciana	11	1,886	28.89	42.12	101
Extremadura	9	750	4.00	10.19	41
Galicia	-	-	-	-	-
Madrid, Comunidad de	7	718	52.39	75.10	186
Murcia, Región de	-	-	-	-	-
Navarra, Comunidad Foral de	9	738	10.14	12.66	59
País Vasco	17	1,854	20.58	28.34	152
Rioja, La	6	272	9.83	22.37	9
Ceuta	-	-	-	-	-
Melilla	-	-	-	-	-
Annual rate	2.81	-1.35	9.43	10.48	3.26
Cumulative annual rate	9.41	2.79	4.04	1.52	0.33

3. Travellers and overnight stays by countries of residence

Countries	Travellers		Overnight stays		Average stay
	Total	%	Total	%	
TOTAL	61,888	100.00	156,514	100.00	2.53
Residents in Spain	39,910	64.49	96,749	61.81	2.42
Residents abroad	21,978	35.51	59,766	38.19	2.72
TOTAL residents abroad	21,978	100.00	59,766	100.00	2.72
TOTAL residents in E.U. (excluding Spain)	12,353	56.21	31,140	52.10	2.52
- Germany	2,520	11.47	6,721	11.25	2.67
- Belgium	400	1.82	1,028	1.72	2.57
- France	2,659	12.10	6,440	10.77	2.42
- Italy	2,276	10.35	5,662	9.47	2.49
- Netherlands	576	2.62	1,636	2.74	2.84
- Portugal	289	1.31	755	1.26	2.62
- United Kingdom	1,851	8.42	4,469	7.48	2.41
Switzerland	172	0.78	414	0.69	2.40
Other European countries	3,810	17.34	8,547	14.30	2.24
United States of America	1,606	7.31	3,618	6.05	2.25
Other countries	5,819	26.47	20,476	34.26	3.52

HOLIDAY DWELLING PRICE INDEX (HDPI)

November 2018

Provisional data

2nd January 2019

National general index and breakdown by rates

	Index	Annual variation rate
TOTAL	133.77	1.74
Normal	126.62	1.68
Weekend	118.39	-2.19
Tour-operators and travel agencies	140.43	2.19

National general index and breakdown by modalities

	Index	Annual variation rate
TOTAL	133.77	1.74
Studio	125.11	0.88
Dwellings 2/4 bedplaces	134.41	1.71
Dwellings 4/6 bedplaces	144.80	2.46

Tourist Campsite Price Index (TCSPI). 2002 Base

November 2018

Provisional data

2nd January 2019

National general index and breakdown by rates

	Index	Annual variation rate
TOTAL	140.17	1.00
Normal rate	134.66	2.37
Special rate for stays up to one month	141.70	0.11
Special rate for stays longer than one month	153.96	0.89
Bungalow rate ¹	96.10	0.01

¹2014 Base

National general index and breakdown by categories

	Index	Annual variation rate
TOTAL	140.17	1.00
Luxury and first	153.36	1.77
Second	131.78	0.39
Third	151.50	0.00

TCSPI (ANNEX OF TABLES) - November 2018. Provisional data

Rural Tourism Accommodation Price Index (RTAPI)

November 2018

Provisional data

2nd January 2019

General Autonomous Cities and Communities and national indices

	Index	Annual variation rate
TOTAL	136.73	1.70
Andalucía	136.63	2.32
Aragón	153.51	-0.76
Asturias, Principado de	130.43	4.91
Baleares, Illes	109.57	-2.31
Canarias	104.90	0.58
Cantabria	160.85	9.12
Castilla y León	135.37	1.30
Castilla - La Mancha	136.65	1.33
Cataluña	148.75	3.33
Comunitat Valenciana	144.33	4.77
Extremadura	106.07	-2.68
Galicia	134.98	0.77
Madrid, Comunidad de	149.25	4.32
Murcia, Región de	121.39	4.42
Navarra, Comunidad Foral de	165.80	0.23
País Vasco	136.24	-1.93
Rioja, La	141.16	3.58
Ceuta	-	-
Melilla	-	-

National general index and breakdown by rates

	Index	Annual variation rate
TOTAL	136.73	1.70
Normal	130.32	1.04
Weekend	142.37	1.93

National general index and breakdown by rent modality

	Index	Annual variation rate
TOTAL	136.73	1.70
Shared use (in case of per room rent modality)	120.27	1.34
Full use (rent of entire dwelling)	143.84	1.81