

31 January 2014

Non-Hotel Tourist Accommodation Occupancy Survey
Year 2013. *Provisional data*

**Overnight stays in non-hotel tourist accommodation increased
1.0% in 2013¹**

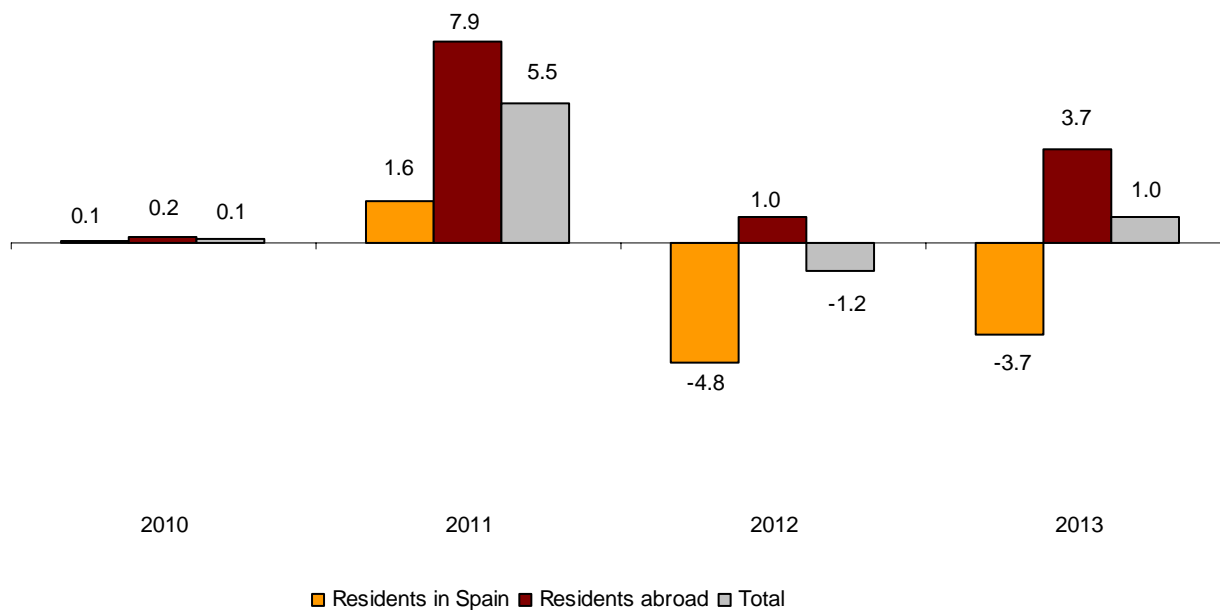
Overnight stays in non-hotel tourist accommodation (holiday dwellings, campsites and rural tourism accommodation) reached 102.9 millions in 2013, which is 1.0% more than in 2012.

This variation rate is 2.2 points higher than that registered in 2012, when the overnight stays decreased by 1.2%.

Overnight stays by resident travellers decreased by 3.7% in 2013, whereas those of non residents increased by 3.7%.

63% of the overnight stays were registered in holiday dwellings, 30% in campsites and 7% in rural tourism accommodation.

Overnight annual growth rate in non-hotel accommodation. Annual serie



Travellers and overnight stays in collective non-hotel tourist accommodation all over the year 2013 were:

Year 2013	Travellers	Overnight stays
Residents in Spain	9,239,414	35,778,808
EU (not including Spain)	7,512,048	59,959,201
Rest of the world	1,014,115	7,254,973
TOTAL	17,765,576	102,992,982

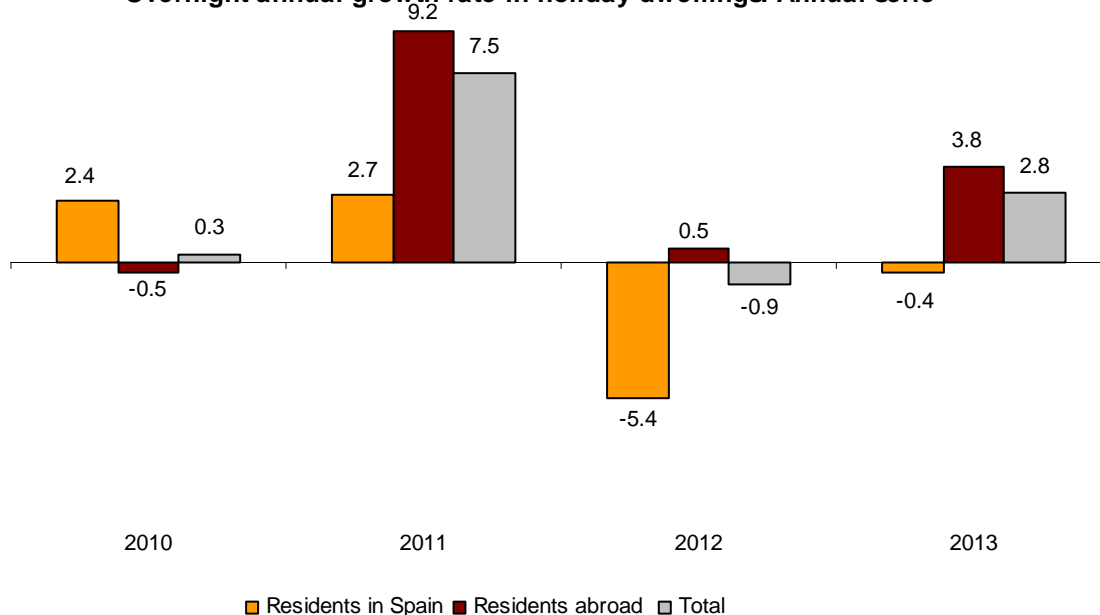
¹ Due to the update made in the rural tourist accommodation directory in Región de Murcia, the data published cannot be directly compared to those published last year. In order to avoid this break in the series, linking coefficients have been calculated, allowing for comparing the data from different years. The coefficients are published monthly on the INE website, in the section dedicated to this statistical operation, in a specific section entitled linking coefficients.

Holiday Dwellings

Overnight stays in holiday dwellings increased 2.8% in 2013. Overnight stays of residents decreased 0.4%, whereas overnight stays of non-residents increased 3.8%. Non-resident travellers, representing 66.5% of the total, registered 77.3% of the total figure of overnight stays.

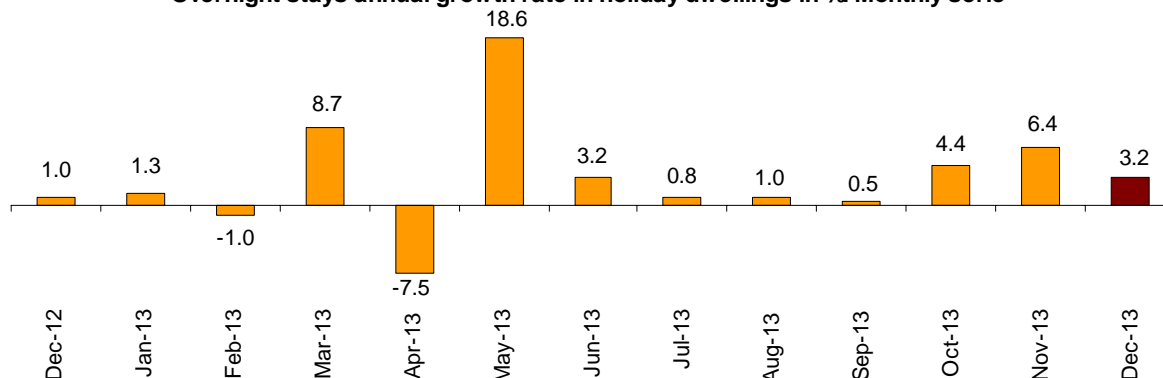
The annual variation rate for 2013 was 3.7 points higher than that registered in 2012, when the overnight stays decreased by 0.9%.

Overnight annual growth rate in holiday dwellings. Annual serie



In 2013, out of the total overnight stays in holiday dwellings, 64.8% were accounted for in the months between May and October.

Overnight stays annual growth rate in holiday dwellings in %. Monthly serie

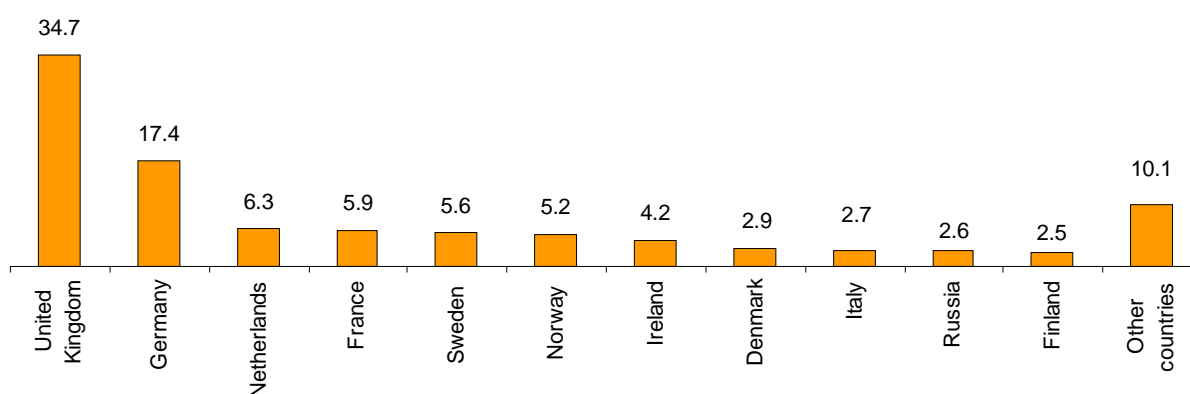


In 2013, out of the total bedplaces offered by the tourist dwellings, 38.8% were occupied on average, 0.8% more than in 2012. The average occupancy rate by bedplaces on weekends stood at 40.8%, registering an increase of 0.9%.

The United Kingdom was established as the first issue market regarding holiday dwellings, with 17.4 million overnight stays, which was 2.4% more than in 2012. This country was followed by Germany, with 8.7 million overnight stays, 10.9% more.

Overnight stays of travellers from The Netherlands, France, Sweden (the following issue markets) registered annual rates of -5.7%, 8.4% and 1.1%, respectively. The most significant increase was registered by Russia, with a rate of 37.8%.

Distribution of overnight stays of residents abroad of the 11 main countries by origin



Canarias was the preferred destination regarding holiday dwellings, with 30.2 million overnight stays, 1.2% more than in 2012. The second destination was Illes Balears, with more than 9.9 million overnight stays, 4.3% more.

Illes Balears registered, on average, the greatest occupancy rate, with 71.5% of the holiday dwellings offered. It was followed by Canarias (67.8%) and Comunidad de Madrid (58.5%).

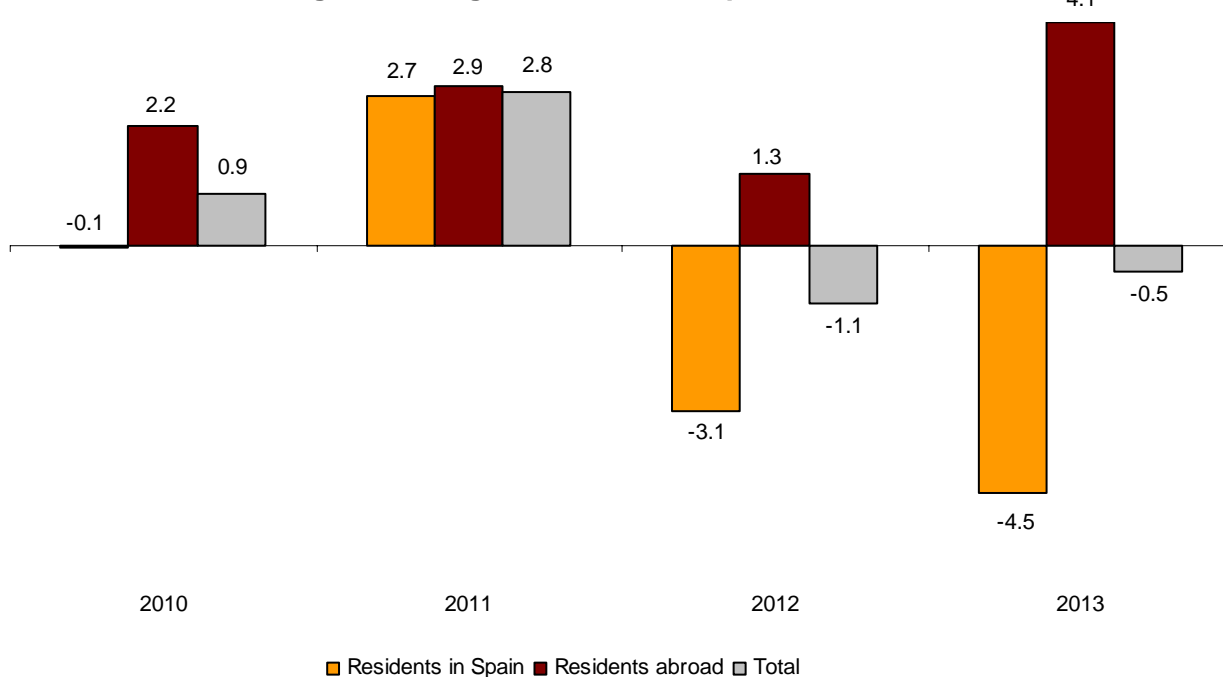
The main tourist areas by number of overnight stays in 2013 were the island of Gran Canaria (with more than 9.6 million overnight stays), the island of Tenerife (with 9.5 million) and the island of Lanzarote (7.3 million). The island of Mallorca reached, on average, the greatest occupancy rate, with 74.8% holiday dwellings occupied.

The tourist sites with the greatest number of overnight stays were San Bartolomé de Tirajana, Arona and Tías.

Campsites

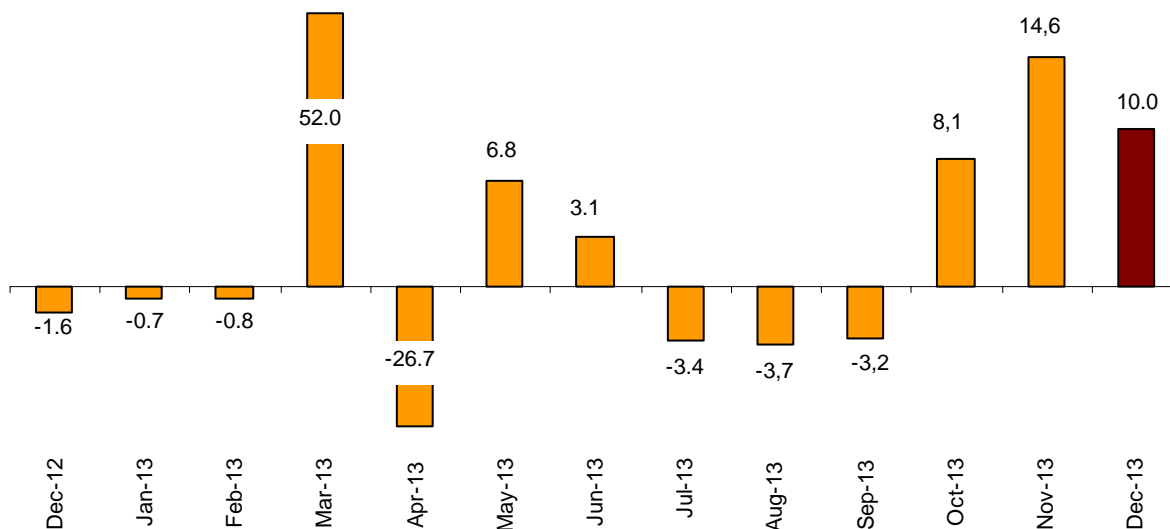
The overnight stays in tourist campsites registered a 0.5% annual decrease in 2013. Overnight stays by resident travellers decreased 4.5%, whereas those of non-resident travellers increased by 4.1%.

Overnight annual growth rate in campsites. Annual serie



79.9% of overnight stays were recorded between the months of May and October.

Overnight stays annual growth rate in campsites in % Monthly serie



Campsites offered, on average, 492,721 sites, 1.0% more than in 2012. Out of the offered lots, 35.4% were occupied, 0.6% more. The average occupancy rate by lots on weekends reached 37.7%, that was, 0.5 less than in 2012.

49.3% of the overnight stays on tourist campsites were by non-residents. The Netherlands, which was the main country of origin with 25.3% of the total overnight stays by non-residents, registered an increase of 1.6%, as compared with 2012. It was followed by Great Britain and France, with 20.1% and 19.7% of the total overnight stays, respectively.

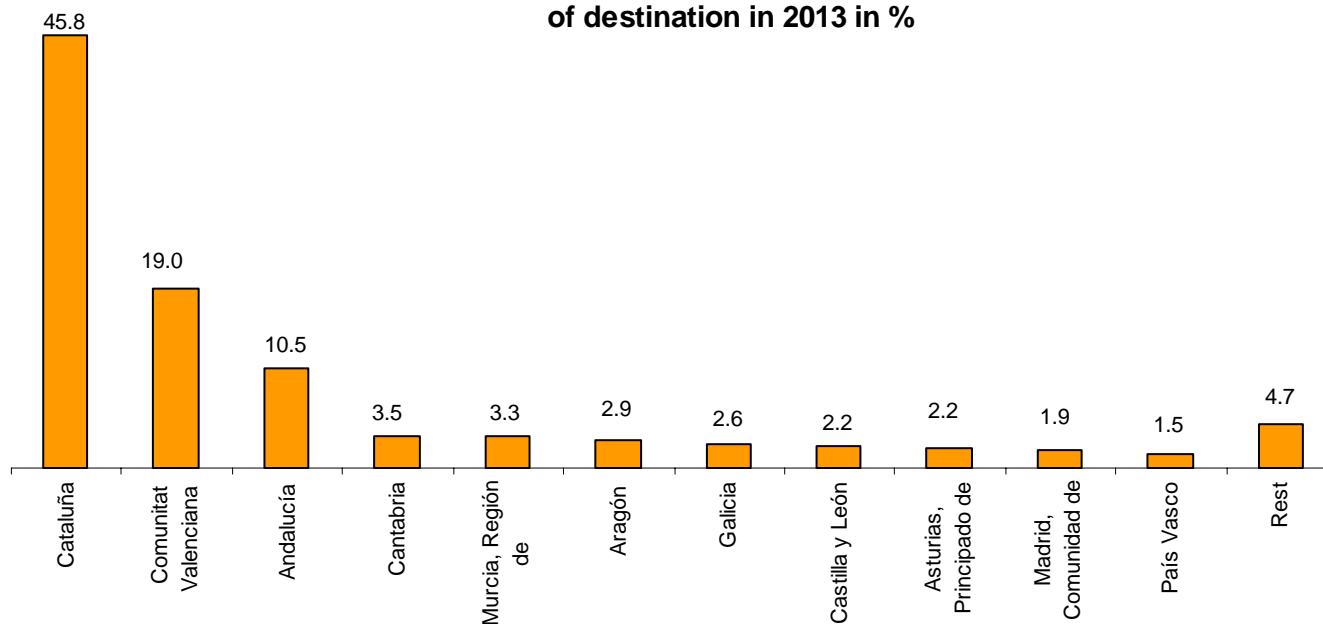
Cataluña was the preferred destination on campsites, with more than 14.2 million overnight stays, 0.1% more than in 2012. Comunitat Valenciana was the community that registered the greatest increase all over the year, 4.0%.

La Rioja reached, on average, the greatest occupancy rate, with 61.3% of the offered lots. It was followed by Comunidad de Madrid and Comunitat Valenciana (both 48.6%).

By tourist area, Costa Brava was the preferred destination, with 6.5 million overnight stays. Costa Blanca reached, on average, the highest occupancy rate of 60.7% of the offered lots.

The tourist sites with the highest number of overnight stays were Benidorm, Torroella de Montgrí and Mont-Roig del Camp.

Distribution of total overnight stays in campsites by autonomous community of destination in 2013 in %



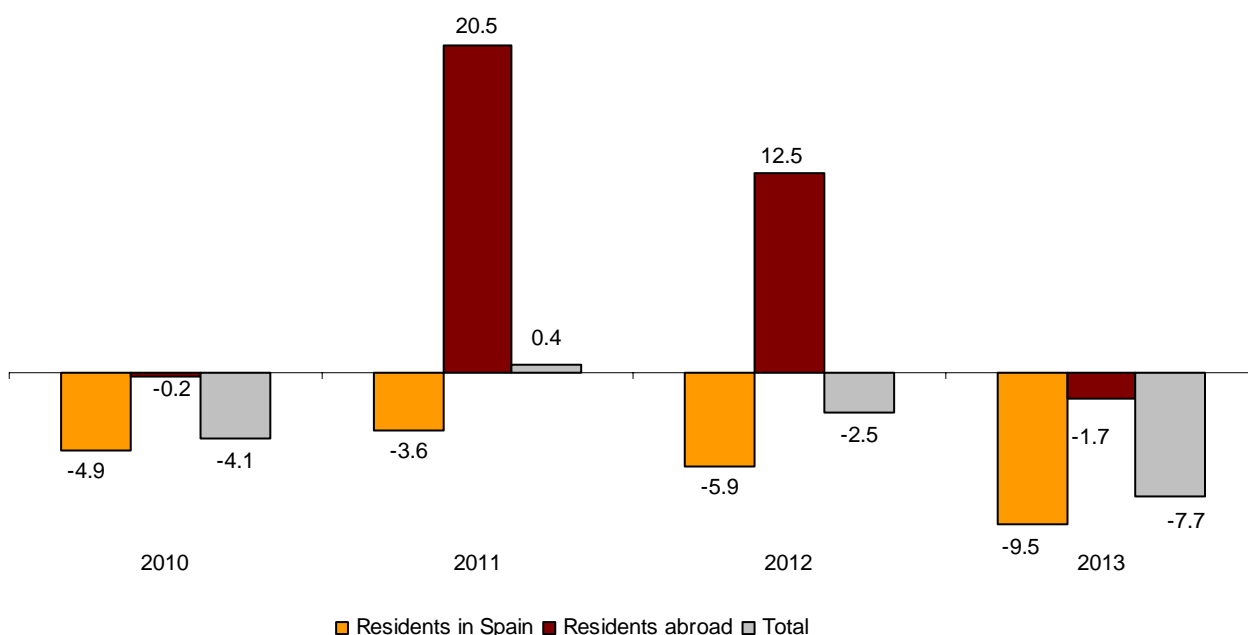
Rural Tourism Accommodation

Overnight stays in rural tourism accommodations presented an annual decrease of 7.7% in 2013, as compared with the previous year, reaching 6.9 millions.

Overnight stays of residents registered a greater decrease (-9.5%), as compared with those of non-residents (-1.7%).

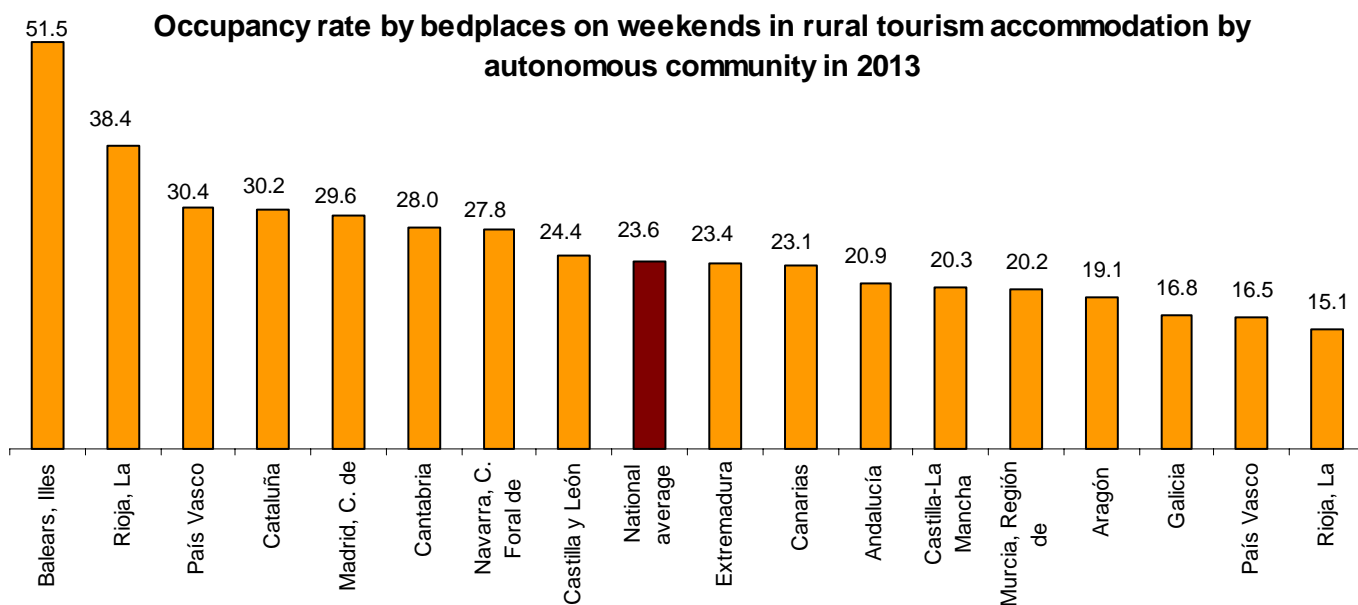
Resident travellers, which represented 84.2% of the total, registered 75.4% of the total number of overnight stays.

Overnight annual growth rate in rural tourism accommodation. Annual serie



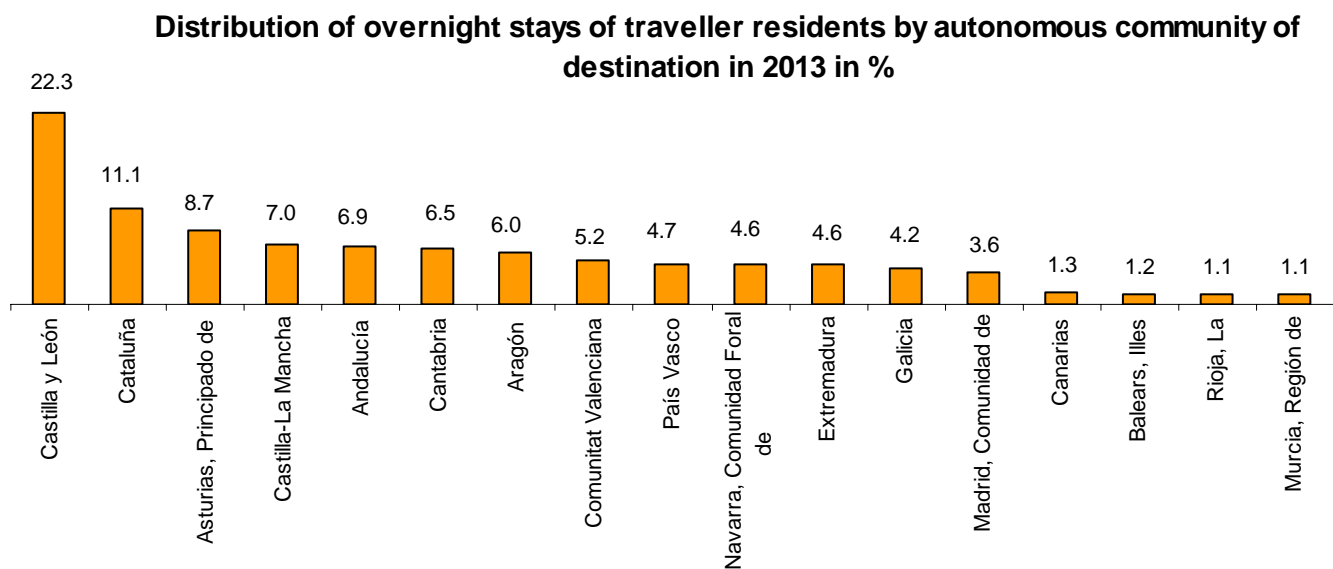
In 2013, out of the total overnight stays, there were 65.6% concentrated between the months of May and October.

Rural tourism accommodation offered, on average, 139,266 bedplaces all over the year, 1.3% less than in 2012. The occupancy rate was 13.4%, recording a 6.3% decrease and the average occupancy rate of bedplaces on weekends decreased by 0.3% and stood at 23.6%.



By Autonomous Community, Castilla y León was the preferred destination, with 1.2 million overnight stays, 8.6% less than in 2012. Cataluña was the second main destination, with 734,935 overnight stays, 14.6% less.

Illes Balears was the main destination chosen by non-residents, with 36.0% of the total overnight stays of non-residents, 0.4% less than in 2012.

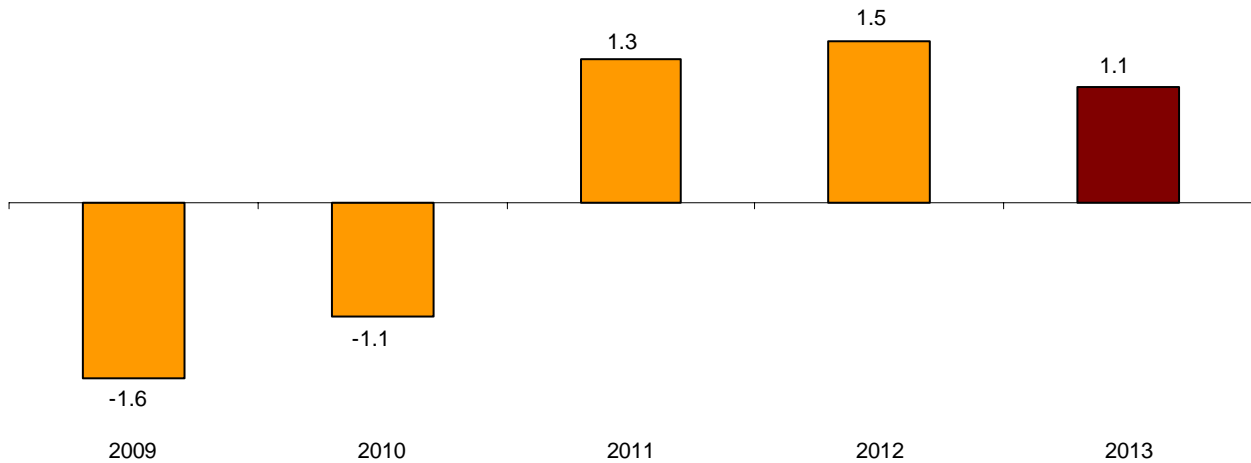


By tourist area, the island of Mallorca was the main destination in 2013, with 570,510 overnight stays. The islands of Ibiza-Formentera reached, on average, the greatest occupancy, with 51.7% of the total bedplaces offered.

Price Indices

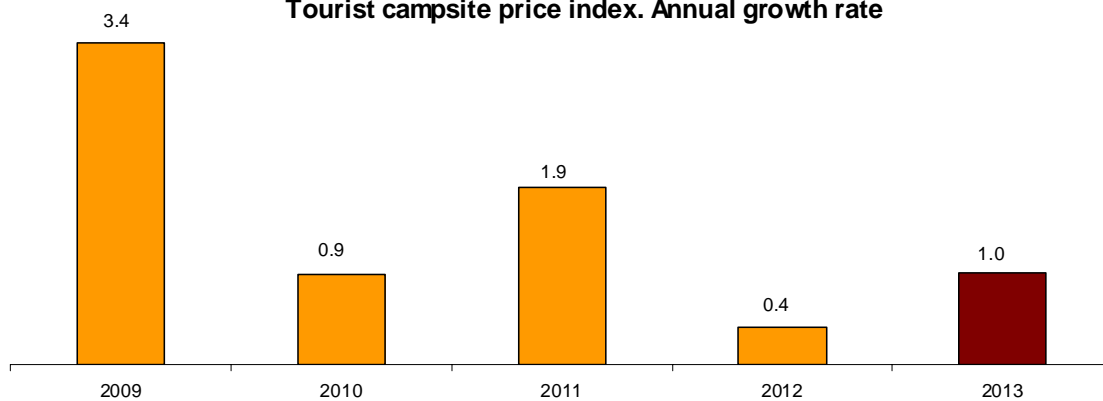
In 2013, the Holiday Dwelling Price Index (HDPI) registered an average increase of 1.1%.

Holiday dwelling price index. Annual growth rate



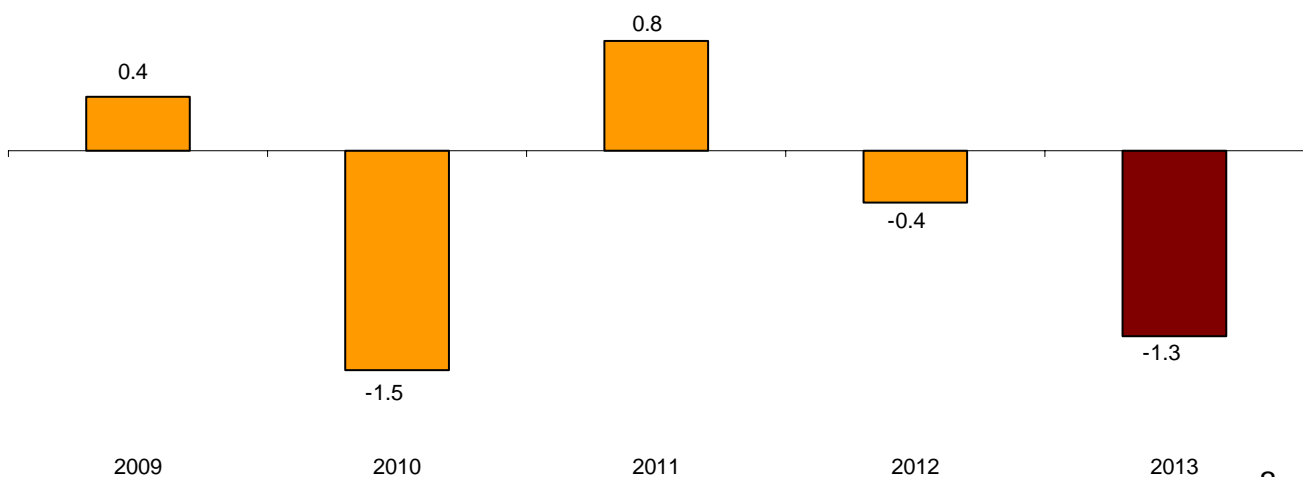
In turn, the Tourist Campsite Price Index (TCPI) increased 1.0%.

Tourist campsite price index. Annual growth rate



The Rural Tourism Accommodation Price Index (RTAPI) recorded an average decrease of 1.3% in 2013.

Rural tourism accommodation price index. Annual growth rate



Evolution of travellers and overnight stays in all Spanish collective tourist accommodation in 2013

Overnight stays in Spanish collective tourist accommodation (hotels, holiday dwellings, campsites and rural tourism accommodation) exceeded 388.9 million overnight stays in 2013, recording an increase of 1.7%, as compared with the previous year.

Overnight stays of residents decreased 2.2%, whereas those of non-residents increased 3.9%.

The average stay increases 0.5% and stood at 3.8 overnight stays per traveller.

Travellers and overnight stays in collective tourist accommodation were²:

Year 2013	Holiday dwellings	Campsites	Rural T.	Non-hotel	Hotels	Total
Travellers	9,234,392	6,030,743	2,500,441	17,765,575	83,829,573	101,595,148
Residents	3,094,535	4,039,916	2,104,962	9,239,414	42,536,882	51,776,296
Non-residents	6,139,856	1,990,826	395,480	8,526,162	41,292,691	49,818,853
Overnight stays	64,894,070	31,186,276	6,912,636	102,992,982	285,995,873	388,988,855
Residents	14,751,709	15,815,314	5,211,785	35,778,808	100,424,653	136,203,461
Non-residents	50,142,361	15,370,961	1,700,851	67,214,173	185,571,220	252,785,393

The main countries of origin in overall regulated tourist accommodation were Great Britain (with 27.0% of the total overnight stays of non-residents), Germany (22.9%) and France (7.8%).

By Autonomous Community, Canarias was the preferred destination regarding tourist accommodation, with more than 89.9 million overnight stays during 2013 (2.7% more than in the previous year).

It was followed by Cataluña, with more than 70.2 million (and an increase of 0.8%, as compared with 2012) and Illes Balears, with more than 65.2 million (and an increase of 0.9%).

² The results showed in the table are the sum of the monthly figures. The potential gaps between subtotals and the total are due to the fact that the data are shown without decimals, but they are calculated taking them into account. Therefore, the differences may be explained by the rounding.

Non-hotel tourist accommodation in the month of December

In December, 5.1 million overnight stays were recorded in non-hotel tourist accommodation (holiday dwellings, campsites, rural tourism accommodation), which was 3.2% more than the same month of the year 2012. Overnight stays by resident travellers increased 1.8%, and stays by non-residents rose 3.6%.

Overnight stays in holiday dwellings increased 3.2% in December. Overnight stays by residents increased 11.3%, and those by non-residents increased 1.7%.

In the month of December, 34.2% of the total available bedplaces for holiday dwellings were occupied, 5.1% less than in the same month of 2012. The weekend occupancy rate by bedplaces stood at 36.5%, with an increase of 5.8%.

The United Kingdom was the main country of origin, with 923,963 overnight stays, 6.3% more than in December 2012. It was followed by Germany, with 559,737 overnight stays, 8.0% more.

Canarias was the favourite destination for holiday dwellings, with more than 2.7 million overnight stays and 76.6% occupancy of the holiday dwellings offered.

Overnight stays on campsites increased 10.0% in December, with regard to the same month in 2012. Overnight stays by residents decreased 0.5%, while non-resident stays increased 14.4%.

33.3% of the available lots were occupied in December, reflecting a 3.7% increase. 34.4% of the available lots were occupied during the weekend, meaning a 2.7% increase.

73.5% of the overnight stays on campsites were by non-resident travellers. The United Kingdom was the main country of origin, with 35.3% of the overnight stays by non-residents, 13.0% more than in December 2012.

Comunitat Valenciana was the preferred destination for campsites, with 441,092 overnights stays, 17.8% more than in December 2012. La Rioja reached the highest occupancy rate on campsites, with 60.7% of the lots offered.

Overnight stays in rural tourism accommodation decreased 6.6% in December. Resident overnight stays dropped 7.7%, whereas those of non-residents increased 3.3%.

12.3% of the bedplaces in this accommodation were occupied, 3.1% less than in December 2012. The occupancy rate during the weekend increased 19.2%, reaching 24.7%.

Castilla y Leon was the preferred destination in rural tourism accommodation, with 116,120 overnight stays, 1.2% less than in December 2012. Canarias reached the highest occupancy rate, with 28.2% of the available bedplaces.

The Holiday Dwelling Price Index (HDPI) registered a 0.3% increase in December, with regard to the same month of 2012. In turn, the Tourist Campsite Price Index (TCPI) rose 1.8%, while the Rural Tourism Accommodation Price Index (RTAPI) registered a 1.9% decrease.

Tourist Accommodation Occupancy Survey (Holiday Dwellings)

Year 2013

Provisional data

1. Travellers, overnight stays and average stay by Autonomous Cities and Communities

Autonomous Cities and Communities	Travellers			Overnight stays			Average stay
	Total	Residents in Spain	Residents abroad	Total	Residents in Spain	Residents abroad	
TOTAL	9,234,392	3,094,535	6,139,856	64,894,070	14,751,709	50,142,361	7.03
Andalucía	1,353,752	664,516	689,236	6,791,435	2,522,226	4,269,209	5.02
Aragón	119,356	103,761	15,595	414,835	347,338	67,497	3.48
Asturias, Principado de	42,103	38,411	3,692	166,060	151,198	14,862	3.94
Balears, Illes	1,382,865	169,012	1,213,853	9,947,937	913,029	9,034,908	7.19
Canarias	3,543,195	651,952	2,891,243	30,203,871	3,142,888	27,060,983	8.52
Cantabria	80,295	70,436	9,859	287,391	251,067	36,324	3.58
Castilla y León	69,849	65,902	3,947	200,813	188,102	12,712	2.87
Castilla-La Mancha	68,252	59,441	8,811	212,888	167,635	45,253	3.12
Cataluña	884,307	343,128	541,179	5,980,668	2,155,455	3,825,214	6.76
Comunitat Valenciana	1,078,519	497,068	581,451	7,936,075	3,093,121	4,842,954	7.36
Extremadura	33,272	30,657	2,615	89,920	82,767	7,152	2.70
Galicia	62,543	52,440	10,103	234,497	199,633	34,864	3.75
Madrid, Comunidad de	305,509	180,914	124,595	1,239,681	647,352	592,330	4.06
Murcia, Región de	105,807	80,634	25,173	803,435	586,742	216,692	7.59
Navarra, Comunidad Foral de	46,363	39,472	6,891	164,599	137,210	27,389	3.55
País Vasco	31,165	20,863	10,302	148,172	97,632	50,540	4.75
Rioja, La	27,240	25,928	1,311	71,793	68,314	3,478	2.64
Ceuta	-	-	-	-	-	-	-
Melilla	-	-	-	-	-	-	-
Annual rate	4.20	4.03	4.28	2.77	-0.43	3.75	-1.37

2. Capacity, occupancy and number of staff by Autonomous Cities and Communities

Autonomous Cities and Communities	Capacity ¹		Level of occupancy ²				Employed persone ¹
	Estimated bedplaces	Estimated Holiday dwelling	Per bedplaces	Per bedplaces at weekenc	Per Holiday dwelling	Per Holiday dwelling at weekend	
TOTAL	453,801	123,645	38.75	40.8254	56.55	58.90	23,052
Andalucía	58,120	14,825	31.80	35.53	47.76	52.66	3,070
Aragón	6,270	1,457	18.01	25.99	25.64	34.40	442
Asturias, Principado de	3,369	872	13.28	16.43	19.08	22.39	222
Balears, Illes	45,407	14,362	58.14	58.75	71.52	72.23	3,203
Canarias	169,713	52,995	48.42	49.58	67.83	69.19	9,771
Cantabria	3,704	1,018	20.97	25.79	28.62	34.36	209
Castilla y León	4,354	931	12.61	21.53	20.00	29.54	381
Castilla-La Mancha	4,720	1,184	12.29	19.87	18.25	27.22	365
Cataluña	50,171	11,463	32.34	34.36	45.43	47.56	1,550
Comunitat Valenciana	80,989	16,809	26.66	28.35	40.45	42.87	2,100
Extremadura	1,592	388	15.33	21.72	20.94	29.40	143
Galicia	3,565	979	17.75	20.81	26.81	29.93	214
Madrid, Comunidad de	7,681	3,181	43.96	48.82	58.47	61.97	531
Murcia, Región de	9,704	2,105	22.53	23.95	35.05	36.94	361
Navarra, Comunidad Foral de	1,907	428	23.46	29.45	37.04	41.78	329
País Vasco	1,495	416	26.94	32.77	50.30	55.81	79
Rioja, La	1,041	234	18.74	34.96	25.13	44.20	84
Ceuta	-	-	-	-	-	-	-
Melilla	-	-	-	-	-	-	-
Annual rate	2.02	1.95	0.78	0.94	1.48	1.60	3.00

¹ Annual average

² Occupancy rate is weighted by number of bedplaces or by number of appartmen

3. Travellers, overnight stays, capacity, occupancy, total number of staff with greater number of overnight stays *

Provinces	Travellers		Overnight stays			Capacity**		Level of occupancy***			Employed personnel**
	Residents in Spain	Residents abroad	Residents in Spain	Residents abroad	Average stay	Estimated bed-places	Estimated holiday dwelling	Per bed-places	Per Holiday dwelling	Per Holiday dwelling at weeker	
Palmas, Las	415,737	1,869,399	2,111,090	17,773,171	8.70	114,587	35,824	47.15	67.23	68.47	6,030
Santa Cruz de Tenerife	236,215	1,021,843	1,031,798	9,287,813	8.20	55,126	17,171	51.07	69.08	70.69	3,741
Alicante/Alacant	273,387	466,865	1,530,050	4,043,857	7.53	56,463	11,980	26.90	42.33	44.66	1,565
Málaga	194,749	506,376	826,434	3,554,559	6.25	31,667	7,907	37.82	58.24	60.87	1,811
Girona	95,497	178,705	590,716	1,541,251	7.78	23,420	5,095	24.62	33.50	34.98	575
Barcelona	106,287	194,932	919,992	1,058,978	6.57	11,403	3,312	47.24	66.04	68.42	557
Tarragona	112,142	165,226	551,338	1,214,516	6.37	13,112	2,603	36.55	47.42	49.51	313
Valencia/València	134,649	77,972	788,762	409,962	5.64	11,219	2,307	28.88	39.40	43.37	336
Castellón/Castelló	89,032	36,614	774,309	389,135	9.26	13,307	2,522	23.74	32.47	33.90	199
Almería	114,181	19,717	530,251	167,001	5.21	7,432	1,741	25.53	38.63	43.90	183
Sevilla	90,775	84,606	270,087	251,076	2.97	4,364	1,448	32.28	48.33	57.32	242
Cádiz	79,642	27,814	293,329	117,384	3.82	4,880	1,250	22.27	31.98	38.66	303
Granada	75,054	33,748	249,440	128,127	3.47	4,197	1,144	24.40	32.46	40.39	305
Huelva	60,303	4,459	236,800	24,934	4.04	2,391	534	29.79	39.30	48.25	46
Huesca	50,311	4,398	186,068	19,500	3.76	3,531	780	15.83	20.28	28.90	260

4. Travellers, overnight stays, capacity, occupancy, total number of staff from tourist areas with greater number of overnight stays

Tourist Areas	Travellers		Overnight stays			Capacity**		Level of occupancy***			Employed personnel**
	Residents in Spain	Residents abroad	Residents in Spain	Residents abroad	Average stay	Estimated bed-places	Estimated holiday dwelling	Per bed-places	Per Holiday dwelling	Per Holiday dwelling at weeker	
Isla de Gran Canaria	221,797	852,368	1,065,553	8,612,012	9.01	56,754	18,303	46.54	65.49	67.39	2,722
Isla de Tenerife	187,754	970,301	824,601	8,728,257	8.25	48,455	14,905	53.78	72.75	74.34	3,251
Isla de Lanzarote	119,563	756,468	685,499	6,619,502	8.34	40,471	12,106	48.95	70.47	70.83	2,412
Isla de Mallorca	26,949	739,079	137,842	5,802,555	7.75	25,915	8,262	60.57	74.78	75.18	1,909
Costa Blanca	263,996	460,858	1,499,065	3,991,499	7.57	54,473	11,588	27.46	43.07	45.37	1,491
Costa del Sol	174,448	492,484	772,557	3,476,007	6.37	30,066	7,514	38.54	59.46	61.84	1,742
Isla de Fuerteventura	74,377	260,563	360,038	2,541,657	8.66	17,362	5,415	44.94	65.87	66.82	895
Islas de Ibiza y Formentera	71,426	321,193	375,067	2,048,857	6.17	11,261	3,639	57.28	68.59	70.30	791
Costa Brava	71,468	176,168	520,522	1,532,045	8.29	21,669	4,744	25.57	34.61	35.57	439
Costa Daurada	105,713	164,290	528,910	1,205,398	6.42	12,475	2,473	37.73	48.87	50.95	276

5. Travellers, overnight stays, capacity, occupancy, total number of staff from tourist sites with greater number at overnights stays

Tourist sites	Travellers		Overnight stays			Capacity**		Level of occupancy***			Employed personnel**
	Residents in Spain	Residents abroad	Residents in Spain	Residents abroad	Average stay	Estimated bed-places	Estimated holiday dwelling	Per bed-places	Per Holiday dwelling	Per Holiday dwelling at weeker	
San Bartolomé de Tirajana	169,942	541,517	849,915	5,584,580	9.04	38,449	12,101	45.66	66.84	68.99	1,761
Arona	44,130	431,344	179,955	3,945,368	8.68	20,450	6,382	55.12	73.03	74.19	1,351
Tías	60,481	410,219	332,292	3,599,533	8.35	20,725	6,557	51.27	71.99	72.30	1,074
Mogán	39,090	292,680	160,594	2,879,499	9.16	16,789	5,572	49.48	64.58	65.88	867
Adeje	47,246	307,695	213,616	2,739,672	8.32	14,648	4,142	54.95	76.79	78.21	954
Benidorm	84,686	236,850	491,430	1,932,102	7.54	17,642	4,360	37.47	56.45	59.41	719
Teguise	43,453	189,960	255,732	1,700,192	8.38	11,793	3,463	45.11	67.30	67.75	750
Calvià	2,955	186,506	13,975	1,412,373	7.53	6,633	2,258	62.69	74.92	76.55	433
Alcúdia	2,771	155,774	15,485	1,230,635	7.86	4,815	1,538	66.42	74.88	75.01	423
Madrid	178,062	124,898	608,904	573,519	3.90	7,014	2,907	45.88	60.36	63.85	462

* Provinces belonging to uniprovincial Autonomous Communities have not been included because they are reflected in previous tables.

** Annual average

***Occupancy rate is weighted by number of bedplaces or by number of appartments.

6. Travellers and overnight stays by countries of residence

Countries	Travellers		Overnight stays	
	Total	%	Total	%
TOTAL	9,234,392	100.00	64,894,070	100.00
Residents in Spain	3,094,535	33.51	14,751,709	22.73
Residents abroad	6,139,856	66.49	50,142,361	77.27
Total residents abroad	6,139,856	100.00	50,142,361	100.00
Total residents in E.U (excluding Spain)	5,293,002	86.21	43,591,401	86.94
- Germany	867,976	14.14	8,719,566	17.39
- Austria	26,649	0.43	231,514	0.46
- Belgium	85,828	1.40	713,891	1.42
-Denmark	165,546	2.70	1,460,200	2.91
- Finland	143,591	2.34	1,236,854	2.47
- France	415,283	6.76	2,957,215	5.90
- Greece	4,817	0.08	27,805	0.06
- Ireland	272,317	4.44	2,115,146	4.22
- Italy	220,522	3.59	1,353,998	2.70
- Luxembourg	9,721	0.16	84,101	0.17
- Netherlands	353,301	5.75	3,143,845	6.27
- Poland	46,034	0.75	324,909	0.65
- Portugal	51,180	0.83	299,885	0.60
- United Kingdom	2,209,836	35.99	17,420,286	34.74
- Czech Republic	20,468	0.33	154,340	0.31
- Sweden	330,636	5.39	2,815,637	5.62
- Other EU countries	69,297	1.13	532,209	1.06
Norway	256,818	4.18	2,588,774	5.16
Russia	149,528	2.44	1,280,412	2.55
Switzerland	63,442	1.03	501,376	1.00
Other european countries	60,902	0.99	458,389	0.91
United States of America	70,877	1.15	324,705	0.65
Rest of America	84,156	1.37	533,435	1.06
African countries	42,140	0.69	264,465	0.53
Other countries	118,992	1.94	599,404	1.20

7. 2013 Evolution: Travellers, overnight stays and average stay

	Travellers			Overnight stays			Average stay
	Total	Residents in Spain	Residents abroad	Total	Residents in Spain	Residents abroad	
TOTAL	9,234,392	3,094,535	6,139,856	64,894,070	14,751,709	50,142,361	7.03
January	421,318	94,210	327,108	3,741,424	440,830	3,300,594	8.88
February	466,729	123,572	343,157	3,639,063	475,634	3,163,429	7.80
March	645,487	231,778	413,709	4,346,842	884,352	3,462,489	6.73
April	544,125	165,836	378,289	3,488,741	648,916	2,839,825	6.41
May	772,414	236,849	535,565	4,664,068	896,470	3,767,598	6.04
June	976,378	362,069	614,309	5,986,186	1,473,092	4,513,094	6.13
July	1,263,124	468,682	794,441	9,148,745	2,641,597	6,507,148	7.24
August	1,468,199	610,332	857,867	10,788,567	3,735,977	7,052,590	7.35
September	959,162	321,679	637,483	6,677,690	1,654,850	5,022,840	6.96
October	693,586	181,596	511,990	4,811,042	713,330	4,097,712	6.94
November	509,012	137,745	371,266	3,847,552	563,606	3,283,946	7.56
December	514,858	160,186	354,672	3,754,150	623,055	3,131,095	7.29

8. Capacity, occupancy rate and employed personnel

Autonomous Communities	Capacity*		Level of occupancy**				Employed* personnel
	Estimated bedplaces	Estimated Holiday dwelling	Per bedplaces	Per bedplaces at weekend	Per Holiday dwelling	Per Holiday dwelling at weekend	
TOTAL*	453,801	123,645	38.75	40.83	56.55	58.90	23,052
January	359,595	100,086	33.50	34.17	55.71	56.27	18,806
February	360,006	100,542	35.95	36.86	58.61	59.65	18,432
March	390,250	107,939	35.74	38.41	56.33	59.15	19,736
April	422,057	114,283	27.46	29.75	43.44	46.20	20,653
May	488,735	133,703	30.61	33.24	45.49	48.66	24,384
June	537,296	144,789	36.83	40.22	52.90	56.54	27,065
July	576,794	154,511	50.34	53.44	62.86	66.24	29,304
August	576,946	153,498	59.48	59.26	72.96	72.99	29,836
September	553,472	149,289	39.95	41.80	59.48	61.93	28,063
October	450,815	124,414	34.28	36.92	52.92	56.03	23,291
November	377,326	102,672	33.87	35.84	57.69	59.38	18,679
December	352,323	98,016	34.20	36.54	54.57	57.19	18,377

* Annual Average. Average Occupancy rates weighted by apartments or bedplaces.

Tourist Accommodation Occupancy Survey Campsite Occupancy Survey (COS)

Year 2013

Provisional data

1. Travellers, overnight stays and average stay by category of establishment

Category	Travellers			Overnight stays			Average stay
	Total	Residents in Spain	Residents abroad	Total	Residents in Spain	Residents abroad	
TOTAL	6,030,743	4,039,916	1,990,826	31,186,276	15,815,314	15,370,961	5.17
Luxury and first-class	2,652,188	1,594,106	1,058,082	14,840,046	6,511,398	8,328,648	5.60
Second-class	2,834,464	2,013,938	820,525	14,427,368	7,850,451	6,576,917	5.09
Third-class	544,091	431,872	112,219	1,918,862	1,453,465	465,397	3.53
Cumulative annual rate	1.98	0.30	5.57	-0.49	-4.54	4.06	-2.42

2. Open establishments, capacity, occupancy and number of staff by category of establishments

Category	Estimated open establishment	Capacity*		Occupied pitches	Occupancy rate per pitch**	Weekend occupancy rate**	Employed personnel*
		Estimated bed-places	Estimated pitches				
TOTAL	753	492,721	152,153	19,737,974	35.41	37.74	5,608
Luxury and first-class	206	211,240	63,774	8,084,000	34.59	36.89	2,656
Second-class	413	238,466	75,133	9,895,362	35.96	38.22	2,486
Third-class	134	43,015	13,245	1,758,612	36.23	38.97	466
Cumulative annual rate	0.29	1.03	0.40	0.92	0.64	-0.46	0.90

3. Travellers, overnight stays and average stay by autonomous cities and communities

Autonomous cities and communities	Travellers			Overnight stays			Average stay
	Total	Residents in Spain	Residents abroad	Total	Residents in Spain	Residents abroad	
TOTAL	6,030,743	4,039,916	1,990,826	31,186,276	15,815,314	15,370,961	5.17
Andalucía	778,909	517,291	261,618	3,279,257	1,881,332	1,397,925	4.21
Aragón	285,172	187,551	97,621	899,616	599,604	300,011	3.15
Asturias, Principado de	163,240	123,152	40,088	694,303	598,731	95,572	4.25
Balears, Illes	27,567	13,470	14,097	171,830	61,892	109,938	6.23
Canarias	24,153	21,440	2,713	114,974	62,850	52,124	4.76
Cantabria	249,880	192,760	57,120	1,079,057	881,652	197,404	4.32
Castilla y León	260,475	175,245	85,230	690,487	556,620	133,867	2.65
Castilla-La Mancha	93,237	77,626	15,611	233,378	204,863	28,515	2.50
Cataluña	2,483,207	1,542,478	940,729	14,293,576	6,320,106	7,973,470	5.76
Comunitat Valenciana	653,680	439,340	214,341	5,912,682	2,114,959	3,797,723	9.05
Extremadura	104,802	82,523	22,279	260,816	217,265	43,551	2.49
Galicia	218,994	165,090	53,905	795,797	676,556	119,241	3.63
Madrid, Comunidad de	192,927	160,802	32,125	580,021	492,711	87,310	3.01
Murcia, Región de	104,939	67,844	37,095	1,033,469	288,052	745,417	9.85
Navarra, Comunidad Foral de	120,868	93,275	27,593	351,152	294,161	56,990	2.91
País Vasco	153,276	78,823	74,453	453,445	247,021	206,424	2.96
Rioja, La	115,418	101,208	14,210	342,417	316,940	25,478	2.97
Ceuta	-	-	-	-	-	-	-
Melilla	-	-	-	-	-	-	-

*Annual average

**Occupancy rate is weighted by number of pitches

4. Open establishments, capacity, occupancy and number of staff by autonomous cities and communities

Autonomous cities and communities	Estimated open estab.*	Capacity*		Occupied pitches	Occupancy rate per pitch**	Weekend occupancy rate**	Employed personnel*
		Estimated bed-places	Estimated pitches				
TOTAL	753	492,721	152,153	19,737,974	35.41	37.74	5,608
Andalucía	121	70,303	22,372	1,919,420	23.46	26.36	793
Aragón	64	24,146	7,275	680,294	25.51	28.02	268
Asturias, Principado de	25	13,783	4,268	402,572	25.63	28.49	118
Balears, Illes	5	2,049	768	69,248	32.67	26.99	59
Canarias	5	3,982	1,304	88,309	18.53	20.98	23
Cantabria	26	18,441	5,808	865,220	40.57	41.78	140
Castilla y León	57	22,968	7,000	616,115	23.97	25.82	176
Castilla-La Mancha	21	8,019	2,325	220,413	25.90	28.85	75
Cataluña	189	181,193	54,677	7,703,282	38.38	41.23	2,189
Comunitat Valenciana	94	66,121	20,794	3,690,624	48.61	49.68	854
Extremadura	20	7,845	2,459	251,707	27.90	32.82	121
Galicia	48	16,643	5,282	393,480	20.21	22.44	204
Madrid, Comunidad de	20	17,515	5,868	1,042,090	48.64	49.24	185
Murcia, Región de	18	14,783	4,883	610,740	34.31	36.93	160
Navarra, Comunidad Foral de	17	10,198	2,602	362,091	37.96	39.23	107
País Vasco	15	8,402	2,513	342,176	37.12	38.77	94
Rioja, La	8	6,841	2,148	480,193	61.26	61.66	56
Ceuta	-	-	-	-	-	-	-
Melilla	-	-	-	-	-	-	-

5. Travellers and overnight stays, average stay, capacity, occupancy and number of staff by provinces with the greater number of overnight stays***

Provinces	Travellers		Overnight stays		Average stay	Estimated open establishments	Estimated pitches*	Occupancy rate per pitch**	Employed personnel*
	Residents in Spain	Residents abroad	Residents in Spain	Residents abroad					
	Girona	524,036	541,239	2,031,755					
Tarragona	453,651	242,377	2,427,567	2,073,757	6.47	41	16,203	37.61	643
Alicante/Alacant	133,767	94,014	801,259	2,533,052	14.64	33	9,196	55.32	398
Barcelona	433,506	135,652	1,443,431	966,347	4.23	41	10,390	43.84	344
Castellón/Castelló	124,723	81,389	657,677	899,920	7.56	33	6,179	42.13	238
Valencia/València	180,849	38,938	656,023	364,750	4.64	29	5,418	44.60	218
Málaga	82,919	72,835	332,753	655,857	6.35	28	4,785	32.88	171
Cádiz	156,392	53,595	542,078	205,883	3.56	21	5,098	22.13	194
Huesca	141,627	66,751	450,559	216,758	3.20	43	5,291	28.53	198
Huelva	117,342	13,521	490,107	50,447	4.13	9	4,270	22.74	106
Lleida	131,284	21,461	417,353	58,149	3.11	32	4,841	38.32	115
Pontevedra	106,401	23,876	410,919	58,293	3.60	20	2,589	23.02	105
Almería	51,940	29,900	217,430	238,148	5.57	19	2,646	25.16	104
Gipúzkoa	45,172	58,997	131,669	164,391	2.84	9	1,607	30.62	54
Granada	42,274	46,720	123,064	161,891	3.20	22	2,562	16.79	110

*Annual average

**Occupancy rate is weighted by number of pitches

***Provinces belonging to uniprovincial Autonomous Communities have not been included because they are reflected in previous tables.

6. Travellers, overnight stays, average stay, open establishments, capacity, occupancy and number of staff from tourist areas with the greatest number of overnight stays

Tourist areas	Travellers		Overnight stays		Average stay	Estimated open establishments*	Estimated pitches*	Occupancy rate per pitch**	Employed personnel*
	Residents in Spain	Residents abroad	Residents in Spain	Residents abroad					
Costa Brava	424,605	532,007	1,734,696	4,831,682	6.86	55	20,914	35.80	1,006
Costa Daurada	402,033	214,432	2,128,409	1,914,837	6.56	32	14,430	38.01	570
Costa Blanca	114,998	74,619	659,884	2,265,774	15.43	26	7,065	60.66	344
Costa Barcelona	290,071	126,445	1,033,262	943,608	4.75	20	7,924	40.79	243
P. N. Aiguamolls de l'Empordà	68,338	170,055	357,196	1,581,410	8.13	12	5,456	39.97	312
Costa de Castellón	99,009	76,450	596,404	879,398	8.41	28	5,708	42.39	222
Pirineus	307,655	29,692	907,468	98,427	2.98	58	7,723	43.47	224
Costa del Sol	60,483	48,818	291,772	603,191	8.19	14	3,459	40.17	127
Costa Cálida	36,530	29,310	179,520	676,694	13.00	9	3,873	34.95	122
Costa Valencia	110,803	32,066	503,668	323,718	5.79	14	3,594	46.31	144
Costa de la Luz (Cádiz)	146,752	45,608	517,760	191,280	3.69	17	4,475	22.05	174
Pirineo Aragonés	139,747	62,958	451,522	213,286	3.28	38	5,021	28.46	193
Costa Verde	109,180	33,058	545,480	75,879	4.37	20	3,632	27.55	101
Rías Baixas	123,847	28,810	477,062	69,243	3.58	26	3,483	18.87	130
Costa de la Luz (Huelva)	94,875	12,377	429,809	42,437	4.40	6	3,751	19.84	84

7. Travellers, overnight stays, average stay, open establishments, capacity, occupancy and number of staff from tourist sites with the greatest number at overnights stays

Tourist sites	Travellers		Overnight stays		Average stay	Estimated open establishments*	Estimated pitches*	Occupancy rate per pitch**	Employed personnel*
	Residents in Spain	Residents abroad	Residents in Spain	Residents abroad					
Benidorm	22,940	26,802	147,871	1,436,316	31.85	9	3,803	64.24	123
Torroella de Montgrí	19,670	87,061	95,655	952,438	9.82	5	2,121	49.46	147
Mont-Roig del Camp	58,511	60,447	298,312	630,804	7.81	4	2,825	30.52	118
Salou	46,120	52,348	258,557	595,417	8.67	3	2,691	41.27	151
Castelló d'Empúries	18,368	46,402	133,316	575,432	10.94	4	2,991	41.18	166
Sant Pere Pescador	27,747	75,251	103,036	592,060	6.75	4	2,083	46.75	158
Blanes	73,275	28,277	319,631	257,751	5.69	7	2,194	45.51	98
Castell-Platja d'Aro	43,334	35,448	159,596	350,574	6.48	4	2,964	20.83	72
Tarragona	76,561	28,012	322,761	183,857	4.84	6	2,873	43.59	157
Cartagena	13,847	16,420	67,171	422,806	16.19	3	2,537	26.51	65
Pals	27,069	35,032	105,998	357,968	7.47	4	2,779	32.59	123
Calonge	20,449	27,390	117,385	336,007	9.48	3	1,939	35.41	88

*Annual average

**Occupancy rate is weighted by number of pitches

8. Guests and overnight stays by countries of residence

Countries	Guests		Overnight stays	
	Total	%	Total	%
TOTAL	6,030,743	100.00	31,186,276	100.00
Residents in Spain	4,039,916	66.99	15,815,314	50.71
Residents abroad	1,990,826	33.01	15,370,961	49.29
TOTAL residents abroad	1,990,826	100.00	15,370,961	100.00
TOTAL residents in E.U. (excluding Spain)	1,885,733	94.72	14,855,776	96.65
- Germany	316,869	15.92	2,590,100	16.85
- Austria	15,284	0.77	65,712	0.43
- Belgium	95,303	4.79	843,457	5.49
- Denmark	19,646	0.99	188,100	1.22
- Finland	8,385	0.42	73,930	0.48
- France	556,237	27.94	3,024,312	19.68
- Greece	1,185	0.06	3,297	0.02
- Ireland	49,460	2.48	421,360	2.74
- Italy	67,077	3.37	209,655	1.36
- Luxembourg	3,544	0.18	22,313	0.15
- Netherlands	396,575	19.92	3,881,796	25.25
- Poland	16,175	0.81	75,670	0.49
- Portugal	49,195	2.47	129,706	0.84
- United Kingdom	253,138	12.72	3,093,899	20.13
- Czech Republic	8,104	0.41	22,752	0.15
- Sweden	15,198	0.76	167,164	1.09
- Other EU countries	14,357	0.72	42,552	0.28
Norway	5,910	0.30	62,349	0.41
Switzerland	40,312	2.02	243,866	1.59
Other European countries	18,143	0.91	79,637	0.52
United States of America	5,963	0.30	14,790	0.10
Rest of America	9,284	0.47	28,826	0.19
African countries	1,852	0.09	6,224	0.04
Other countries	23,631	1.19	79,495	0.52

9. 2013 Evolution: Travellers, overnight stays and average stay

months	Travellers			Overnight stays			Average stay
	Total	Residents in Spain	Residents abroad	Total	Residents in Spain	Residents abroad	
TOTAL	6,030,743	4,039,916	1,990,826	31,186,276	15,815,314	15,370,961	5.17
Enero	84,681	48,891	35,790	819,367	159,342	660,025	9.68
Febrero	102,349	65,266	37,082	849,951	176,065	673,887	8.30
Marzo	324,557	247,431	77,127	1,537,486	795,623	741,863	4.74
Abril	316,491	201,886	114,605	1,323,794	607,262	716,532	4.18
Mayo	458,557	286,164	172,393	1,937,423	820,443	1,116,980	4.23
Junio	733,779	527,052	206,727	3,072,098	1,676,836	1,395,262	4.19
Julio	1,295,199	820,698	474,501	6,882,447	3,517,425	3,365,022	5.31
Agosto	1,666,411	1,145,466	520,946	9,157,426	5,741,331	3,416,095	5.50
Septiembre	541,452	353,113	188,339	2,616,162	1,347,348	1,268,814	4.83
Octubre	254,982	168,891	86,091	1,258,202	483,969	774,233	4.93
Noviembre	138,376	95,464	42,912	868,885	260,959	607,926	6.28
Diciembre	113,908	79,596	34,313	863,034	228,713	634,321	7.58

10. Open establishments, capacity, occupancy rate and employed personnel

months	Estimated open establishments*	Capacity*		Occupied pitches	Occupancy rate per pitch**	Weekend occupancy rate**	Employed personnel*
		Estimated bed-places	Estimated pitches				
TOTAL	753	492,721	152,153	19,737,974	35.41	37.74	5,608
January	422	254,828	80,456	842,058	33.76	34.66	2,495
February	452	274,612	86,633	872,048	35.95	36.81	2,622
March	679	446,068	139,396	1,379,087	31.91	35.32	4,330
April	796	546,655	169,683	1,383,653	27.18	28.89	5,084
May	840	596,892	183,618	1,672,814	29.39	32.20	6,045
June	1,018	693,753	212,486	2,052,657	32.20	36.19	7,778
July	1,161	745,628	227,723	3,061,561	43.37	47.45	11,049
August	1,168	748,034	229,019	3,590,396	50.57	52.57	11,262
September	983	656,274	201,326	1,933,612	32.01	33.33	7,117
October	603	388,905	120,453	1,182,000	31.65	34.22	3,809
November	478	298,631	93,308	924,058	33.01	35.62	3,075
December	432	262,367	81,729	844,030	33.31	34.43	2,630

*Annual average

**Occupancy rate is weighted by number of pitches

Tourism accommodation occupancy survey (Rural tourism accommodation)

Year 2013

Provisional data

1. Number of travellers, overnight stays and average stay by Autonomous City and Community

Autonomous Communities	Number of travellers			Number of overnight stays			Average stay
	Total	Residents in Spain	Residents abroad	Total	Residents in Spain	Residents abroad	
TOTAL¹	2,500,441	2,104,962	395,480	6,912,636	5,211,785	1,700,851	2.76
Andalucía	185,155	133,646	51,510	643,949	357,023	286,926	3.48
Aragón	122,062	108,894	13,167	364,461	310,864	53,596	2.99
Asturias, Principado de	144,463	135,125	9,339	483,054	451,188	31,864	3.34
Balears, Illes	150,913	21,381	129,534	677,536	64,956	612,583	4.49
Canarias	57,863	19,420	38,445	307,863	68,257	239,604	5.32
Cantabria	150,398	133,478	16,921	383,360	339,694	43,666	2.55
Castilla y León	548,979	515,105	33,875	1,236,350	1,164,019	72,330	2.25
Castilla-La Mancha	158,118	154,931	3,187	382,073	366,476	15,598	2.42
Cataluña	265,358	232,584	32,775	734,935	576,018	158,918	2.77
Comunitat Valenciana	100,605	94,732	5,874	306,328	268,663	37,665	3.04
Extremadura	112,310	106,436	5,875	256,471	239,231	17,239	2.28
Galicia	128,467	106,018	22,451	258,618	216,318	42,298	2.01
Madrid, Comunidad de	121,139	115,607	5,531	205,083	190,187	14,895	1.69
Murcia, Región de ¹	26,012	24,326	1,686	60,778	56,429	4,349	2.34
Navarra, Comunidad Foral de	87,551	80,321	7,228	257,195	240,764	16,430	2.94
País Vasco	114,920	98,440	16,481	291,945	242,785	49,160	2.54
Rioja, La	26,123	24,516	1,609	62,640	58,914	3,726	2.40
Ceuta	-	-	-	-	-	-	-
Melilla	-	-	-	-	-	-	-
Annual rate	-5.92	-7.17	1.32	-7.69	-9.50	-1.66	-1.87

2. Open rural establishments, bed-places, occupancy rates and employed personnel by Autonomous City and Community

Autonomous Communities	Estimated open rural establishments*	Estimated bed-places*	Occupancy rate*			Employed personnel*
			Of bed-places	Of bed-places at weekend	Of bedrooms	
TOTAL¹	15,044	139,266	13.44	23.61	16.15	21,474
Andalucía	1,454	12,509	13.95	20.93	18.92	2,026
Aragón	1,146	8,928	11.03	19.11	12.62	1,282
Asturias, Principado de	1,276	11,699	11.10	16.52	13.74	1,614
Balears, Illes	198	3,721	49.19	51.46	54.36	1,155
Canarias	635	3,852	21.88	23.10	32.48	924
Cantabria	337	5,937	17.36	28.00	20.37	507
Castilla y León	3,432	30,038	11.17	24.39	12.96	4,819
Castilla-La Mancha	1,408	11,936	8.71	20.35	10.24	1,914
Cataluña	1,646	13,266	14.98	30.25	18.05	2,158
Comunitat Valenciana	994	9,208	9.03	15.15	11.64	1,415
Extremadura	514	6,177	11.31	23.38	14.62	767
Galicia	520	6,479	10.79	16.79	11.63	816
Madrid, Comunidad de	239	4,081	13.71	29.55	16.93	557
Murcia, Región de ¹	116	1,745	9.48	20.23	11.08	161
Navarra, Comunidad Foral de	651	4,770	14.57	27.81	16.96	768
País Vasco	376	3,955	19.85	30.40	22.14	472
Rioja, La	104	967	17.49	38.35	17.88	120
Ceuta	-	-	-	-	-	-
Melilla	-	-	-	-	-	-
Annual rate	-1.21	-1.29	-6.30	-0.33	-3.52	0.22

¹ Due to the updating in the directory of establishments carried out in Región de Murcia, the data to be published since January 2013 (for Navarra and the national total) are not directly comparable with the data published last year, therefore, data link coefficients have been calculated to allow the comparison of data between different years. These coefficients are available in INE website (www.ine.es)

* Annual average and weighted average per places or rooms

3. Number of travellers, overnight stays and average stay in Provinces with the greatest number of overnight stays²

Provinces	Number of travellers			Number of overnight stays			Average stay
	Total	Residents in Spain	Residents abroad	Total	Residents in Spain	Residents abroad	
Girona	111,438	93,765	17,673	307,422	231,476	75,945	2.76
Málaga	46,910	21,547	25,364	251,465	68,104	183,361	5.36
Ávila	98,326	96,056	2,270	248,961	241,762	7,199	2.53
Santa Cruz de Tenerife	39,530	12,381	27,149	229,880	48,341	181,539	5.82
Cáceres	96,064	91,127	4,936	222,454	207,510	14,944	2.32
Barcelona	81,441	72,335	9,106	217,850	161,581	56,269	2.67
Huesca	59,245	49,376	9,869	204,662	163,065	41,597	3.45
Segovia	85,428	83,313	2,114	172,136	166,625	5,511	2.01
León	75,105	62,328	12,777	159,479	139,754	19,725	2.12
Salamanca	68,900	65,137	3,763	156,053	144,612	11,440	2.26
Gipuzkoa	61,095	51,803	9,292	154,843	127,981	26,862	2.53
Lleida	49,321	46,997	2,324	147,298	136,442	10,856	2.99
Burgos	61,583	57,562	4,021	136,854	128,346	8,508	2.22
Valencia/València	43,007	41,195	1,813	135,551	126,720	8,831	3.15
Soria	57,510	55,843	1,667	132,092	126,421	5,671	2.30

4. Open rural establishments, bed-places, occupancy rates and employed personnel in Provinces with the highest number of overnight stays²

Provinces	Estimated open rural establishments*	Estimated bed-places*	Occupancy rate*			Employed personnel*
			Of bed-places	Of bed-places at weekend	Of bedrooms	
Girona	542	4,434	18.71	38.56	22.43	733
Málaga	585	3,924	17.39	21.17	25.97	676
Ávila	797	5,857	11.55	26.86	14.45	1,219
Santa Cruz de Tenerife	512	2,888	21.81	22.86	33.03	734
Cáceres	446	5,377	11.26	23.65	14.58	653
Barcelona	420	3,672	16.05	34.23	19.05	608
Huesca	593	4,435	12.45	19.55	13.91	666
Segovia	388	3,578	13.09	33.08	14.62	559
León	452	3,903	11.08	19.41	12.82	670
Salamanca	501	4,016	10.54	21.89	11.74	662
Gipuzkoa	173	1,877	22.11	32.10	24.85	223
Lleida	491	3,497	11.43	21.27	14.40	594
Burgos	386	3,928	9.47	23.33	10.73	452
Valencia/València	292	3,112	11.83	18.04	12.87	459
Soria	325	3,006	11.89	25.82	13.40	430

² Provinces belonging to uniprovincial Autonomous Communities have not been included because they are reflected in previous tables.

* Annual average and weighted average per places or rooms

5. Number of travellers, overnight stays, average stay, capacity and occupancy rates in areas with the highest number of overnight stays

Areas	Number of travellers		Number of overnight stays		Average stay	Capacity*		Occupancy rate*		
	Residents in Spain	Residents abroad	Residents in Spain	Residents abroad		Estimated open rural establishments	Estimated bed-places	Of bed-places	Of bed-places at weekend	Of bedrooms
Isla de Mallorca	12,601	112,675	33,194	537,316	4.55	168	3,094	49.90	51.38	55.14
Pirineus	84,268	5,602	220,690	31,295	2.80	657	4,870	13.99	29.05	16.11
Pirineo Navarro	76,228	1,825	236,664	7,697	3.13	583	4,240	15.56	29.31	18.14
Costa Brava	59,221	15,702	142,649	67,455	2.80	335	2,873	19.69	39.21	23.85
Costa Verde	47,047	3,208	193,067	13,711	4.11	422	4,328	12.83	16.72	16.61
Pirineo Aragonés	48,648	9,432	156,026	35,064	3.29	539	4,088	12.59	20.23	13.80
P.Nacional Picos de Europa	39,109	4,787	114,366	13,282	2.91	238	2,266	15.15	20.54	17.73
Isla de Tenerife	8,266	17,651	19,878	95,860	4.47	114	1,098	28.88	30.15	39.09
Catalunya Central	39,814	4,783	87,096	25,127	2.52	258	2,169	14.04	31.14	16.86
P.Natural de Corona Forestal	5,999	14,012	14,271	79,620	4.69	84	839	30.64	31.89	40.51
P.Nacional Teide	5,866	13,770	13,533	77,656	4.64	77	798	31.29	32.55	41.13
La Palma	2,432	5,866	20,981	63,196	10.14	273	1,165	19.81	20.71	33.70
Pirineo Vasco	25,508	2,664	67,428	12,333	2.83	129	1,333	16.18	26.39	17.99
Costa de Gipuzkoa	23,414	5,196	56,878	12,768	2.43	55	642	28.97	42.70	32.44
Islas de Ibiza-Formentera	3,447	11,429	11,186	49,395	4.07	16	311	51.67	59.96	56.84

6. Number of travellers, overnight stays, average stay, capacity, occupancy rates and employed personnel per rural house by Autonomous City and Community³

Autonomous Communities	Number of travellers		Number of overnight stays		Average stay	Capacity*		Occupancy rate*		Employed personnel*
	Residents in Spain	Residents abroad	Residents in Spain	Residents abroad		Estimated open rural establishments	Estimated bed-places	Of bed-places	Of bed-places at weekend	
TOTAL	1,257,541	183,207	3,325,121	897,786	2.93	12,352	95,296	12.00	22.29	15,939
Andalucía	120,107	47,725	323,454	276,505	3.57	1,431	11,769	13.84	20.74	1,951
Aragón	82,067	10,104	207,751	37,368	2.66	844	6,534	10.15	18.51	947
Asturias, Principado de	53,709	3,332	196,009	15,754	3.71	843	5,226	10.87	16.30	994
Balears, Illes	5,494	28,900	14,194	117,716	3.84	50	696	51.19	54.85	163
Canarias	8,801	19,123	46,980	151,799	7.12	606	3,048	17.87	18.88	779
Cantabria	28,298	1,865	92,516	10,399	3.41	125	1,914	14.44	24.72	152
Castilla y León	274,985	8,453	734,533	32,749	2.71	2,921	19,700	10.56	23.80	3,701
Castilla-La Mancha	144,791	2,999	343,249	15,103	2.42	1,371	11,218	8.69	20.39	1,849
Cataluña	180,110	25,599	452,443	125,821	2.81	1,382	10,514	14.88	29.88	1,790
Comunitat Valenciana	65,148	5,384	174,718	34,750	2.97	960	7,351	7.73	13.83	1,295
Extremadura	45,261	2,675	103,181	8,263	2.32	314	2,999	10.10	21.90	422
Galicia	64,645	8,497	142,084	20,550	2.22	372	4,395	10.01	15.66	530
Madrid, Comunidad de	11,510	744	23,324	3,242	2.17	65	606	11.95	34.49	83
Murcia, Región de	17,453	464	45,766	1,915	2.66	108	1,490	8.70	19.84	130
Navarra, Comunidad Foral de	80,321	7,228	240,764	16,430	2.94	651	4,770	14.57	27.81	768
País Vasco	50,318	8,506	125,245	25,696	2.57	208	2,099	19.35	30.07	264
Rioja, La	24,516	1,609	58,914	3,726	2.40	104	967	17.49	38.35	120
Ceuta	-	-	-	-	-	-	-	-	-	-
Melilla	-	-	-	-	-	-	-	-	-	-

³ To facilitate the comparability between data from different Autonomous Communities (and because of the different regulation and different characteristics), a group called rural house has been created, with those establishments with similar typology (location, capacity, etc...). The variables included in the previous table have been estimated with that type of establishments.

* Annual average and weighted average per places or rooms

7. Travellers and overnight stays by country of residence

Results by countries	Travellers		Overnight stays	
	Total	%	Total	%
TOTAL	2,500,441	100.00	6,912,636	100.00
Residents Spain	2,104,962	84.18	5,211,785	75.40
Residents abroad	395,480	15.82	1,700,851	24.60
Total Residents abroad	395,480	100.00	1,700,851	100.00
Total Residents in UE (excluding Spain)	333,312	84.28	1,512,024	88.90
- Germany	111,567	28.21	620,157	36.46
- Belgium	16,257	4.11	70,779	4.16
- France	61,821	15.63	219,942	12.93
- Italy	12,970	3.28	36,103	2.12
- Netherlands	29,176	7.38	144,406	8.49
- Portugal	7,193	1.82	20,762	1.22
- United Kingdom	72,243	18.27	297,705	17.50
Switzerland	15,372	3.89	58,383	3.43
Other European countries	32,042	8.10	141,499	8.32
United States of America	15,404	3.90	35,653	2.10
Other countries	21,437	5.42	55,461	3.26

8. Evolution of year 2013: Number of travellers, overnight stays and average stay

	Number of travellers			Number of overnight stays			Average stay
	Total	Residents in Spain	Residents abroad	Total	Residents in Spain	Residents abroad	
TOTAL	2,500,441	2,104,962	395,480	6,912,636	5,211,785	1,700,851	2.76
January	84,801	76,052	8,750	213,171	165,211	47,960	2.51
February	116,437	105,098	11,339	255,779	198,204	57,575	2.20
March	222,825	204,465	18,360	600,001	516,845	83,156	2.69
April	157,064	125,243	31,821	378,350	258,020	120,330	2.41
May	201,098	156,708	44,391	487,543	321,766	165,777	2.42
June	229,397	184,458	44,940	550,739	384,168	166,572	2.40
July	275,009	214,555	60,453	924,109	634,629	289,480	3.36
August	377,188	310,806	66,382	1,504,204	1,180,211	323,993	3.99
September	222,286	171,801	50,485	573,447	382,755	190,692	2.58
October	217,150	182,386	34,764	491,340	352,410	138,929	2.26
November	188,602	176,407	12,194	410,963	352,913	58,050	2.18
December	208,584	196,983	11,601	522,990	464,653	58,337	2.51

9. Evolution of year 2013: Open rural establishments, bed-places, occupancy rates and employed personnel

	Estimated open rural establishments*	Estimated bed-places*	Occupancy rate*			Employed personnel*
			Of bed-places	Of bed-places at weekend	Of bedrooms	
TOTAL	15,044	139,266	13.44	23.61	16.15	21,474
January	13,693	121,998	5.63	11.86	6.70	19,403
February	14,212	128,255	7.12	16.54	8.77	19,489
March	15,024	138,342	13.96	25.18	15.69	21,434
April	15,328	143,017	8.80	18.46	10.66	21,512
May	15,413	145,049	10.82	20.37	12.81	21,945
June	15,457	145,622	12.57	24.59	15.13	22,711
July	15,649	147,767	19.99	30.77	23.90	23,168
August	15,624	147,150	32.54	34.56	38.71	23,346
September	15,527	145,096	13.13	24.05	16.19	22,442
October	15,175	140,973	11.21	26.38	13.95	21,907
November	14,906	136,372	10.01	22.95	12.49	20,430
December	14,524	131,549	12.78	24.74	15.52	19,901

* Annual average and weighted average per places or rooms

HOLIDAY DWELLING PRICE INDEX (HDPI)

Year 2013

Provisional data

Annual variation rate by rates

	Annual variation rate
TOTAL	1.05
Normal	-0.63
Weekend	-0.76
Tour-operators and travel agencies	2.50

Annual variation rate by modalities

	Annual variation rate
TOTAL	1.05
Studio	0.01
Dwellings 2/4 bedplaces	1.16
Dwellings 4/6 bedplaces	1.43

The Cumulative annual rates of HDPI, have been calculated as annual average rates of HDPI, weighted per number of appartments of every month.

Tourist Campsite Price Index (TCSPI). 2002 Base Year 2013

Provisional data

Annual variation rate by rates

	Annual variation rate
TOTAL	0.96
Normal rate	0.32
Special rate for stays up to one month	3.62
Special rate for stays longer than one month	2.42

Annual variation rate by categories

	Annual variation rate
TOTAL	0.96
Luxury and first	1.24
Second	0.74
Third	0.49

The Cumulative annual rates of TCSPI have been calculated as annual average rates of TCSPI , weighted per number of pitches of every month.

Rural Tourism Accommodation Price Index (RTAPI)

Year 2013

Provisional data

Annual variation rates by Autonomous Cities and Communities

	Variation Rate Annual
TOTAL	-1.30
Andalucía	0.45
Aragón	-2.77
Asturias, Principado de	-2.68
Balears, Illes	1.52
Canarias	-1.47
Cantabria	-3.49
Castilla y León	-4.16
Castilla - La Mancha	-5.81
Cataluña	-1.06
Comunitat Valenciana	-3.74
Extremadura	-4.54
Galicia	-4.44
Madrid, Comunidad de	0.36
Murcia, Región de	5.28
Navarra, Comunidad Foral de	-1.90
País Vasco	-1.32
Rioja, La	-1.49
Ceuta	-
Melilla	-

Annual variation rate by rates

	Variation Rate Annual
TOTAL	-1.30
Normal	-0.96
Weekend	-1.67

Annual variation rate rent modality

	Variation Rate Annual
TOTAL	-1.30
Shared use (in case of per room rent modality)	-0.56
Full use (rent of entire dwelling)	-2.04

The Cumulative annual rates of RTAPI have been calculated as annual average rates of RTAPI per number of rooms-establishments every month.

Tourist Accommodation Occupancy Survey (Holiday Dwellings)

December 2013 Provisional data

1. Travellers, overnight stays and average stay by Autonomous Cities and Communities

Autonomous Cities and Communities	Travellers			Overnight stays			Average stay
	Total	Residents in Spain	Residents abroad	Total	Residents in Spain	Residents abroad	
TOTAL	514,858	160,186	354,672	3,754,150	623,055	3,131,095	7.29
Andalucía	68,509	36,174	32,335	278,868	100,315	178,553	4.07
Aragón	12,511	11,603	908	41,365	37,780	3,585	3.31
Asturias, Principado de	2,234	2,199	36	4,805	4,730	74	2.15
Balears, Illes	3,352	944	2,407	20,873	3,175	17,699	6.23
Canarias	302,760	25,061	277,699	2,769,736	147,270	2,622,466	9.15
Cantabria	3,070	2,874	195	9,453	8,565	888	3.08
Castilla y León	7,251	7,021	231	20,424	19,525	898	2.82
Castilla - La Mancha	6,339	5,900	439	16,652	14,129	2,524	2.63
Cataluña	28,313	16,692	11,621	169,205	105,754	63,451	5.98
Comunitat Valenciana	38,779	19,538	19,241	250,146	67,432	182,715	6.45
Extremadura	2,706	2,571	134	5,756	5,476	279	2.13
Galicia	3,446	3,148	297	12,710	11,268	1,442	3.69
Madrid, Comunidad de	24,140	16,697	7,443	101,276	59,053	42,223	4.20
Murcia, Región de	2,277	1,517	761	21,311	11,793	9,518	9.36
Navarra, Comunidad Foral de	3,768	3,445	323	12,580	10,906	1,673	3.34
País Vasco	2,212	1,642	570	10,608	7,585	3,023	4.80
Rioja, La	3,191	3,159	32	8,383	8,300	82	2.63
Ceuta	-	-	-	-	-	-	-
Melilla	-	-	-	-	-	-	-
Annual rate	3.59	10.85	0.61	3.18	11.33	1.70	-0.40
Cumulative annual rate	4.20	4.03	4.28	2.77	-0.43	3.75	-1.37

2. Capacity, occupancy and number of staff by Autonomous Cities and Communities

Autonomous Cities and Communities	Capacity		Level of occupancy				Employed personnel
	Estimated bedplaces	Estimated Holiday dwelling	Per bedplaces	Per bedplaces at weekend	Per Holiday dwelling	Per Holiday dwelling at weekend	
TOTAL	352,323	98,016	34.20	36.54	54.57	57.19	18,377
Andalucía	47,575	12,583	18.84	23.17	29.02	34.52	2,622
Aragón	6,366	1,476	20.93	30.38	28.71	39.37	446
Asturias, Principado de	2,796	710	5.54	10.08	9.76	15.28	189
Balears, Illes	2,493	764	26.98	28.91	36.92	38.62	279
Canarias	168,631	52,672	52.62	53.31	76.62	77.34	9,750
Cantabria	2,399	702	12.71	22.91	20.60	32.52	141
Castilla y León	4,814	993	13.56	21.77	19.47	28.73	432
Castilla - La Mancha	4,514	1,140	11.87	18.60	15.98	23.84	341
Cataluña	20,826	5,303	26.33	31.27	38.23	43.53	911
Comunitat Valenciana	68,078	14,473	11.85	12.90	23.71	25.40	1,780
Extremadura	1,553	368	11.92	23.63	16.39	29.92	130
Galicia	2,988	844	13.69	20.56	26.11	33.55	181
Madrid, Comunidad de	8,323	3,381	39.00	48.59	50.31	58.67	509
Murcia, Región de	6,381	1,496	10.77	10.90	21.88	22.11	193
Navarra, Comunidad Foral de	1,961	438	20.64	27.21	30.95	38.80	303
País Vasco	1,475	414	23.14	28.87	41.56	47.83	74
Rioja, La	1,149	257	23.47	38.87	28.56	47.19	98
Ceuta	-	-	-	-	-	-	-
Melilla	-	-	-	-	-	-	-
Annual rate	-1.94	-1.91	5.11	5.83	4.11	4.58	-2.22
Cumulative annual rate	2.02	1.95	0.78	0.94	1.48	1.60	3.00

3. Travellers, overnight stays, capacity, occupancy, total number of staff with greater number of overnight stays *

Provinces	Travellers		Overnight stays		Average stay	Capacity		Level of occupancy			Employed personnel
	Residents in Spain	Residents abroad	Residents in Spain	Residents abroad		Estimated bed-places	Estimated holiday dwelling	Per bed-places	Per Holiday dwelling	Per Holiday dwelling at weekend	
Palmas, Las	15,266	182,166	96,350	1,731,813	9.26	114,453	35,848	51.14	76.10	76.86	6,069
Santa Cruz de Tenerife	9,795	95,533	50,920	890,653	8.94	54,178	16,824	55.77	77.74	78.37	3,681
Alicante\Alacant	12,703	15,689	45,518	163,735	7.37	54,266	11,640	12.44	25.11	26.62	1,416
Málaga	10,422	23,499	30,261	146,024	5.20	27,643	7,093	20.56	32.62	35.15	1,642
Barcelona	5,116	9,300	75,011	51,330	8.76	8,472	2,579	48.88	62.48	65.36	433
Sevilla	9,693	5,099	30,739	16,843	3.22	4,406	1,478	34.40	48.38	64.52	274
Valencia\València	5,720	3,241	16,999	13,244	3.37	6,970	1,506	13.97	25.51	28.75	271
Granada	7,270	1,637	19,613	7,775	3.07	4,288	1,193	20.45	26.51	38.21	290
Huesca	6,540	270	21,523	1,007	3.31	3,575	805	20.30	24.70	36.52	259
Girona	5,578	1,332	13,482	8,736	3.22	8,633	1,924	8.27	12.49	19.05	303
Lleida	4,607	207	14,222	921	3.15	2,406	512	20.19	25.18	36.08	115
Castellón\Castelló	1,115	311	4,915	5,736	7.47	6,843	1,327	5.02	9.34	10.92	93
Teruel	3,206	22	10,617	28	3.30	1,852	415	18.50	23.72	35.21	116
Almería	1,908	544	4,445	3,777	3.35	4,432	1,154	5.98	9.87	10.84	65
Zaragoza	1,857	616	5,639	2,550	3.31	939	257	28.10	49.33	55.05	71

4. Travellers, overnight stays, capacity, occupancy, total number of staff from tourist areas with greater number of overnight stays

Tourist Areas	Travellers		Overnight stays		Average stay	Capacity		Level of occupancy			Employed personnel
	Residents in Spain	Residents abroad	Residents in Spain	Residents abroad		Estimated bed-places	Estimated holiday dwelling	Per bed-places	Per Holiday dwelling	Per Holiday dwelling at weekend	
Isla de Gran Canaria	7,215	90,309	50,620	926,076	10.01	58,165	18,907	53.72	76.67	77.32	2,814
Isla de Tenerife	7,664	90,311	42,046	831,672	8.92	47,929	14,720	58.49	81.17	81.56	3,243
Isla de Lanzarote	6,211	67,120	38,925	568,187	8.28	39,785	11,919	49.01	75.59	76.50	2,424
Isla de Fuerteventura	1,840	24,737	6,805	237,551	9.19	16,503	5,022	47.16	75.15	75.95	831
Costa Blanca	11,833	15,645	43,336	163,315	7.52	52,807	11,344	12.62	25.47	27.07	1,350
Costa del Sol	8,732	22,970	25,081	144,023	5.33	26,596	6,793	20.51	32.97	35.22	1,582
Catalunya Central	720	32	62,183	15,594	31.00	2,811	1,006	89.23	91.85	93.24	57
Barcelona	3,192	8,911	8,028	32,789	3.37	3,469	947	37.81	54.57	59.67	305
Isla de la Gomera	677	3,051	3,392	31,031	9.23	3,210	1,081	34.59	57.83	60.54	219
Isla de la Palma	1,307	2,143	4,998	27,689	9.47	2,661	911	39.46	54.43	56.37	196

5. Travellers, overnight stays, capacity, occupancy, total number of staff from tourist sites with greater number at overnights stays

Tourist sites	Travellers		Overnight stays		Average stay	Capacity		Level of occupancy			Employed personnel
	Residents in Spain	Residents abroad	Residents in Spain	Residents abroad		Estimated bed-places	Estimated holiday dwelling	Per bed-places	Per Holiday dwelling	Per Holiday dwelling at weekend	
San Bartolomé de Tirajana	5,276	51,254	39,814	542,370	10.30	38,145	11,965	48.76	74.76	75.45	1,752
Arona	1,524	41,073	7,808	371,510	8.90	20,349	6,369	60.04	81.52	81.71	1,320
Mogán	771	36,571	3,928	357,450	9.68	18,340	6,242	63.28	80.09	80.65	946
Tías	3,043	35,518	15,639	315,935	8.60	20,558	6,574	51.75	76.58	77.01	1,071
Adeje	1,601	27,264	11,904	249,913	9.07	14,289	4,009	58.76	81.76	81.67	944
Teguise	2,424	17,407	19,248	144,111	8.24	11,734	3,425	44.68	74.00	75.02	766
Puerto de la Cruz	3,961	9,347	19,487	102,800	9.19	6,593	2,534	59.59	82.18	84.00	448
Benidorm	4,873	8,332	19,170	85,252	7.91	16,852	4,151	19.99	35.77	38.27	637
Madrid	16,631	7,462	57,021	40,648	4.05	7,689	3,114	40.67	51.89	60.70	441
Oliva (La)	961	9,353	3,643	83,932	8.49	5,536	1,644	50.82	85.65	87.26	282

* Provinces belonging to uniprovincial Autonomous Communities have not been included because they are reflected in previous tables.

6. Travellers and overnight stays by countries of residence

Countries	Travellers		Overnight stays	
	Total	%	Total	%
TOTAL	514,858	100.00	3,754,150	100.00
Residents in Spain	160,186	31.11	623,055	16.60
Residents abroad	354,672	68.89	3,131,095	83.40
Total residents abroad	354,672	100.00	3,131,095	100.00
Total residents in E.U (excluding Spain)	297,208	83.80	2,634,865	84.15
- Germany	48,148	13.58	559,737	17.88
- Austria	1,831	0.52	19,234	0.61
- Belgium	4,800	1.35	46,894	1.50
-Denmark	15,267	4.30	126,900	4.05
- Finland	19,304	5.44	186,133	5.94
- France	14,191	4.00	77,318	2.47
- Greece	167	0.05	2,165	0.07
- Ireland	9,812	2.77	71,023	2.27
- Italy	8,728	2.46	48,277	1.54
- Luxembourg	899	0.25	10,251	0.33
- Netherlands	17,241	4.86	168,751	5.39
- Poland	1,756	0.50	12,347	0.39
- Portugal	1,907	0.54	8,228	0.26
- United Kingdom	109,048	30.75	923,963	29.51
- Czech Republic	924	0.26	8,292	0.26
- Sweden	37,954	10.70	319,451	10.20
- Other EU countries	5,230	1.47	45,900	1.47
Norway	26,707	7.53	294,663	9.41
Other european countries	11,775	3.32	92,457	2.95
United States of America	4,130	1.16	21,102	0.67
Rest of America	5,301	1.49	35,468	1.13
African countries	2,380	0.67	11,911	0.38
Other countries	7,173	2.02	40,630	1.30

Tourist Accommodation Occupancy Survey Campsite Occupancy Survey (COS)

December 2013

Provisional data

1. Travellers, overnight stays and average stay by category of establishment

Category	Travellers			Overnight stays			Average stay
	Total	Residents in Spain	Residents abroad	Total	Residents in Spain	Residents abroad	
TOTAL	113,908	79,596	34,313	863,034	228,713	634,321	7.58
Luxury and first-class	48,157	30,933	17,223	369,162	97,708	271,454	7.67
Second-class	56,479	41,155	15,324	466,827	114,352	352,474	8.27
Third-class	9,273	7,508	1,765	27,045	16,652	10,393	2.92
Annual rate	12.22	4.14	36.88	10.03	-0.46	14.38	-1.95
Cumulative annual rate	1.98	0.30	5.57	-0.49	-4.54	4.06	-2.42

2. Open establishments, capacity, occupancy and number of staff by category of establishments

Category	Estimated open establishments	Capacity		Occupied pitches	Occupancy rate per pitch	Weekend occupancy rate	Employed personnel
		Estimated bedplaces	Estimated pitches				
TOTAL	431	262,367	81,729	844,030	33.31	34.43	2,630
Luxury and first-class	120	112,696	34,671	336,180	31.28	31.59	1,219
Second-class	242	132,708	41,656	458,077	35.47	37.28	1,231
Third-class	70	16,963	5,403	49,774	29.72	31.32	180
Annual rate	-2.03	-0.44	-1.54	2.13	3.73	2.69	1.66
Cumulative annual rate	0.29	1.03	0.40	0.92	0.64	-0.46	0.90

3. Travellers, overnight stays and average stay by Autonomous Cities and Communities

Autonomous cities and communities	Travellers			Overnight stays			Average stay
	Total	Residents in Spain	Residents abroad	Total	Residents in Spain	Residents abroad	
TOTAL	113,908	79,596	34,313	863,034	228,713	634,321	7.58
Andalucía	18,799	9,110	9,689	153,701	34,018	119,683	8.18
Aragón	6,132	5,694	438	16,489	15,127	1,362	2.69
Asturias, Principado de	650	436	214	1,346	1,100	246	2.07
Balears, Illes	-	-	-	-	-	-	-
Canarias	1,021	692	329	8,065	2,121	5,944	7.90
Cantabria	262	262	-	597	597	-	2.28
Castilla y León	1,945	1,087	858	3,682	2,699	983	1.89
Castilla - La Mancha	1,494	1,270	224	3,197	2,751	446	2.14
Cataluña	35,030	29,086	5,945	98,803	68,500	30,303	2.82
Comunitat Valenciana	27,336	14,833	12,503	441,092	59,025	382,066	16.14
Extremadura	1,772	1,074	697	3,319	2,095	1,223	1.87
Galicia	324	271	53	667	511	156	2.06
Madrid, Comunidad de	7,392	6,752	640	19,263	17,586	1,677	2.61
Murcia, Región de	4,930	2,615	2,315	97,931	8,690	89,241	19.86
Navarra, Comunidad Foral de	2,210	2,095	115	4,708	4,570	138	2.13
País Vasco	967	677	290	3,132	2,281	851	3.24
Rioja, La	3,643	3,643	-	7,043	7,043	-	1.93
Ceuta	-	-	-	-	-	-	-
Melilla	-	-	-	-	-	-	-

4. Open establishments, capacity, occupancy and number of staff by autonomous cities and communities

Autonomous cities and communities	Estimated open establishments	Capacity		Occupied pitches	Occupancy rate per pitch	Weekend occupancy rate	Employed personnel
		Estimated bedplaces	Estimated pitches				
TOTAL	431	262,367	81,729	844,030	33.31	34.43	2,630
Andalucía	101	57,070	17,848	130,660	23.62	23.89	567
Aragón	41	17,111	5,109	29,991	18.94	20.48	158
Asturias, Principado de	5	3,626	1,047	3,588	11.06	17.71	17
Balears, Illes	-	-	-	-	-	-	-
Canarias	5	3,574	1,439	7,059	15.82	18.93	25
Cantabria	4	2,458	700	10,043	46.30	45.79	12
Castilla y León	25	8,546	2,656	10,658	12.95	13.01	65
Castilla - La Mancha	15	4,569	1,382	11,830	27.62	24.36	34
Cataluña	66	48,267	14,197	123,919	28.16	34.41	428
Comunitat Valenciana	86	61,721	19,431	306,858	50.94	52.26	765
Extremadura	10	3,578	1,221	9,107	24.07	23.18	61
Galicia	17	5,096	1,685	3,425	6.56	6.02	61
Madrid, Comunidad de	19	17,390	5,825	80,219	44.42	45.91	170
Murcia, Región de	18	14,815	4,875	63,990	42.34	45.26	155
Navarra, Comunidad Foral de	8	5,494	1,470	16,560	36.34	36.47	56
País Vasco	7	4,476	1,422	9,375	21.26	15.79	29
Rioja, La	4	4,574	1,422	26,748	60.69	40.82	26
Ceuta	-	-	-	-	-	-	-
Melilla	-	-	-	-	-	-	-

5. Travellers and overnight stays, average stay, capacity, occupancy and number of staff by provinces with the greatest number of overnight stays*

Provinces	Travellers		Overnight stays		Average stay	Estimated open establishments	Estimated pitches	Occupancy rate per pitch	Employed personnel
	Residents in Spain	Residents abroad	Residents in Spain	Residents abroad					
	Spain		Spain						
Alicante\Alacant	4,287	6,302	27,139	277,055	28.73	32	8,981	63.92	393
Castellón\Castelló	3,508	5,126	13,558	78,280	10.64	29	5,669	38.62	206
Málaga	2,415	3,612	12,353	66,688	13.11	28	4,670	36.33	158
Valencia\València	7,038	1,075	18,328	26,731	5.55	24	4,781	41.18	166
Barcelona	9,132	2,895	20,938	17,288	3.18	16	5,003	24.32	140
Almería	950	1,615	8,013	27,521	13.85	18	2,481	28.76	97
Girona	8,897	2,265	22,039	10,248	2.89	24	4,596	28.17	176
Lleida	8,424	42	20,100	101	2.39	15	2,632	43.35	48
Granada	1,999	1,412	4,744	10,654	4.51	21	2,439	13.93	97
Cádiz	681	1,965	1,658	12,003	5.16	12	3,216	21.83	113
Huesca	4,066	100	10,669	608	2.71	25	3,586	22.65	101
Tarragona	2,633	743	5,424	2,665	2.40	10	1,967	17.53	64
Huelva	1,216	219	2,847	1,690	3.16	7	2,986	15.67	49
Córdoba	1,176	439	2,575	619	1.98	4	932	13.70	22
Teruel	1,299	-	3,111	-	2.39	11	1,089	6.01	29

* Provinces belonging to uniprovincial Autonomous Communities have not been included because they are reflected in previous tables.

6. Travellers, overnight stays, average stay, open establishments, capacity, occupancy and number of staff from tourist areas with the greatest number of overnight stays

Tourist areas	Travellers		Overnight stays		Average stay	Estimated open establishments	Estimated pitches	Occupancy rate per pitch	Employed personnel
	Residents in	Residents abroad	Residents in	Residents abroad					
	Spain		Spain						
Costa Blanca	2,606	4,441	14,909	242,267	31.00	25	6,803	69.15	333
Costa de Castellón	2,350	4,942	11,255	77,648	12.19	26	5,364	38.29	195
Costa Cálida	783	1,672	3,366	80,718	31.00	9	3,775	45.58	117
Costa del Sol	760	2,705	9,134	63,272	20.90	13	3,321	46.17	119
Pirineus	19,388	119	45,279	214	2.33	32	4,802	45.96	128
Costa Valencia	3,107	1,054	11,416	22,954	8.26	10	2,983	46.22	99
Costa de Almería	687	1,589	7,195	25,041	14.16	12	2,039	29.68	69
Costa Barcelona	3,196	2,895	6,759	17,288	3.95	4	3,559	13.25	88
Costa Brava	2,288	2,185	5,310	10,130	3.45	12	3,032	19.68	116
Costa de la Luz (Cádiz)	395	1,801	1,083	11,273	5.63	10	2,712	18.16	98
Pirineo Aragonés	3,914	100	10,316	608	2.72	22	3,426	23.69	94
Costa Tropical	236	853	986	8,506	8.72	7	1,058	22.85	37
Costa Daurada	2,374	259	4,794	1,190	2.27	7	1,401	21.89	44
P.N. Los Alcornocales	392	860	1,029	4,233	4.20	6	1,209	24.06	50
Catalunya Central	1,332	-	4,874	-	3.66	5	535	44.55	25

7. Travellers, overnight stays, average stay, open establishments, capacity, occupancy and number of staff from tourist sites with the greatest number at overnights stays

Tourist sites	Travellers		Overnight stays		Average stay	Estimated open establishments	Estimated pitches	Occupancy rate per pitch	Employed personnel
	Residents in	Residents abroad	Residents in	Residents abroad					
	Spain		Spain						
Benidorm	602	1,879	5,697	144,072	31.00	9	3,812	73.03	155
Cartagena	242	951	1,755	49,103	31.00	3	2,537	33.39	67
Marbella	220	600	7,021	28,599	31.00	3	1,310	44.07	49
Mazarrón	74	593	887	26,118	31.00	3	874	71.46	35
Peñíscola	788	2,433	2,522	21,753	7.54	8	1,287	39.37	44
Oliva	132	882	975	21,170	21.83	5	1,253	31.89	66
Cabanes	142	646	605	19,745	25.82	3	964	37.18	49
Benicasim/Benicàssim	512	641	1,921	18,418	17.64	3	833	46.80	34
Vélez-Málaga	376	641	1,358	18,508	19.53	4	801	55.99	36
Campello, El	328	158	2,864	7,873	22.09	3	301	59.10	16
Motril	240	608	723	6,094	8.04	3	586	31.73	25
Fortuna	232	532	738	5,708	8.44	3	199	57.21	4

8. Travellers and overnight stays by countries of residence

Countries	Travellers		Overnight stays	
	Total	%	Total	%
TOTAL	113,908	100.00	863,034	100.00
Residents in Spain	79,596	69.88	228,713	26.50
Residents abroad	34,313	30.12	634,321	73.50
TOTAL residents abroad	34,313	100.00	634,321	100.00
TOTAL residents in E.U. (excluding Spain)	31,879	92.91	611,285	96.37
- Germany	9,241	26.93	173,037	27.28
- Austria	468	1.37	5,717	0.90
- Belgium	1,766	5.15	28,306	4.46
- Denmark	220	0.64	7,275	1.15
- Finland	382	1.11	9,981	1.57
- France	5,478	15.96	36,815	5.80
- Greece	26	0.08	181	0.03
- Ireland	252	0.73	3,706	0.58
- Italy	1,445	4.21	4,696	0.74
- Luxembourg	76	0.22	1,381	0.22
- Netherlands	4,216	12.29	90,992	14.34
- Poland	21	0.06	301	0.05
- Portugal	509	1.48	1,369	0.22
- United Kingdom	6,649	19.38	223,893	35.30
- Czech Republic	144	0.42	710	0.11
- Sweden	781	2.28	21,013	3.31
- Other EU countries	205	0.60	1,912	0.30
Other European countries	1,853	5.40	19,227	3.03
United States of America	210	0.61	635	0.10
Rest of America	111	0.32	746	0.12
African countries	10	0.03	39	0.01
Other countries	249	0.73	2,390	0.38

Tourist accommodation occupancy survey (Rural tourist accommodation)

December 2013

Provisional data

1. Number of travellers, overnight stays and average stay by Autonomous City and Community

Autonomous Communities	Number of travellers			Number of overnight stays			Average stay
	Total	Residents In Spain	Residents abroad	Total	Residents In Spain	Residents abroad	
TOTAL¹	208,584	196,983	11,601	522,990	464,653	58,337	2.51
Andalucía	19,557	17,577	1,980	55,972	44,290	11,682	2.86
Aragón	13,371	12,965	406	35,474	33,696	1,778	2.65
Asturias, Principado de	7,882	7,825	58	19,062	18,913	149	2.42
Balears, Illes	1,928	777	1,151	6,318	1,359	4,959	3.28
Canarias	6,203	1,780	4,423	33,909	6,116	27,792	5.47
Cantabria	6,459	6,283	176	13,666	13,356	310	2.12
Castilla y León	49,870	48,795	1,075	116,120	113,348	2,771	2.33
Castilla-La Mancha	17,258	17,140	118	41,184	40,294	890	2.39
Cataluña	25,637	24,926	711	65,662	62,804	2,858	2.56
Comunitat Valenciana	11,937	11,614	322	28,808	26,883	1,925	2.41
Extremadura	9,523	9,310	213	23,988	23,422	565	2.52
Galicia	7,016	6,855	161	12,465	11,877	587	1.78
Madrid, Comunidad de	10,234	9,861	373	17,592	16,768	823	1.72
Murcia, Región de ¹	2,993	2,947	46	6,927	6,860	67	2.31
Navarra, Comunidad Foral de	8,842	8,807	35	23,069	22,965	104	2.61
País Vasco	7,756	7,470	286	16,728	15,740	988	2.16
Rioja, La	2,118	2,051	68	6,048	5,962	86	2.86
Ceuta	-	-	-	-	-	-	-
Melilla	-	-	-	-	-	-	-
Annual rate	-7.62	-7.96	-1.57	-6.57	-7.67	3.31	1.14
Cumulative annual rate	-5.92	-7.17	1.32	-7.69	-9.50	-1.66	-1.87

2. Open rural establishments, bed-places, occupancy rates and employed personnel by Autonomous City and Community

Autonomous Communities	Estimated open rural establishments	Estimated bed-places	Occupancy rate			Employed personnel
			Of bed-places	Of bed-places at weekend	Of bedrooms	
TOTAL¹	14,524	131,549	12.78	24.74	15.52	19,901
Andalucía	1,422	12,432	14.47	23.05	18.70	1,976
Aragón	1,146	8,880	12.80	21.53	13.53	1,257
Asturias, Principado de	1,170	10,747	5.71	13.40	7.84	1,486
Balears, Illes	74	1,272	16.01	20.07	18.90	245
Canarias	635	3,873	28.17	29.34	43.24	913
Cantabria	282	4,664	9.42	23.25	11.47	414
Castilla y León	3,374	28,979	12.88	28.53	14.72	4,734
Castilla-La Mancha	1,375	11,824	11.21	24.42	13.71	1,833
Cataluña	1,667	13,170	16.04	31.82	19.17	2,177
Comunitat Valenciana	981	8,939	10.37	16.75	15.01	1,443
Extremadura	523	6,319	12.21	29.84	16.01	784
Galicia	467	5,785	6.94	14.19	8.37	697
Madrid, Comunidad de	241	3,977	14.24	30.91	17.83	528
Murcia, Región de ¹	114	1,662	13.40	26.60	13.46	151
Navarra, Comunidad Foral de	612	4,527	16.30	29.95	17.09	695
País Vasco	339	3,554	15.11	26.36	16.53	445
Rioja, La	102	946	20.35	35.58	21.05	122
Ceuta	-	-	-	-	-	-
Melilla	-	-	-	-	-	-
Annual rate	-2.70	-3.27	-3.08	19.20	2.96	0.03
Cumulative annual rate	-1.21	-1.29	-6.30	-0.33	-3.52	0.22

¹ Due to the updating in the directory of establishments carried out in Región de Murcia, the data to be published since January 2013 (for Navarra and the national total) are not directly comparable with the data published last year, therefore, data link coefficients have been calculated to allow the comparison of data between different years. These coefficients are available in INE website (www.ine.es)

3. Number of travellers, overnight stays and average stay in Provinces with the greatest number of overnight stays²

Provinces	Number of travellers			Number of overnight stays			Average stay
	Total	Residents In Spain	Residents abroad	Total	Residents In Spain	Residents abroad	
Ávila	9,835	9,761	73	24,585	24,432	153	2.50
Girona	9,476	9,245	231	24,389	23,712	677	2.57
Santa Cruz de Tenerife	4,080	987	3,093	24,016	3,632	20,384	5.89
Segovia	10,435	10,277	157	22,805	22,542	263	2.19
Barcelona	8,829	8,634	194	20,698	19,891	807	2.34
Cáceres	7,593	7,431	162	20,228	19,773	455	2.66
Málaga	4,814	3,607	1,207	18,723	10,375	8,348	3.89
Huesca	6,309	5,958	351	18,228	16,927	1,301	2.89
Salamanca	7,178	6,879	299	16,535	15,903	632	2.30
Lleida	5,623	5,448	175	16,356	15,675	681	2.91
Burgos	5,340	5,230	110	12,442	12,248	194	2.33
Cuenca	4,765	4,694	71	12,196	11,365	831	2.56
Castellón\Castelló	4,927	4,860	67	10,902	10,835	67	2.21
Teruel	4,086	4,044	42	10,660	10,195	465	2.61
León	4,672	4,427	245	10,617	9,778	839	2.27

4. Open rural establishments, bed-places, occupancy rates and employed personnel in Provinces with the highest number of overnight stays²

Provinces	Estimated open rural establishments	Estimated bed-places	Occupancy rate			Employed personnel
			Of bed-places	Of bed-places at weekend	Of bedrooms	
Ávila	780	5,685	13.90	31.15	17.43	1,182
Girona	547	4,315	18.20	36.43	21.71	764
Santa Cruz de Tenerife	514	2,940	26.31	26.78	41.70	728
Segovia	410	3,731	19.62	39.71	21.53	571
Barcelona	415	3,618	18.34	40.59	20.72	563
Cáceres	451	5,431	11.98	30.35	15.70	650
Málaga	575	3,931	15.30	16.40	21.32	649
Huesca	591	4,370	13.37	21.28	13.78	635
Salamanca	502	4,042	13.15	27.58	14.89	661
Lleida	508	3,580	14.73	26.59	18.76	637
Burgos	369	3,665	10.92	30.65	11.84	427
Cuenca	281	2,965	13.24	24.32	15.12	379
Castellón\Castelló	487	3,929	8.93	14.12	15.19	613
Teruel	365	2,949	11.64	20.76	13.37	411
León	429	3,538	9.66	21.06	10.43	665

² Provinces belonging to uniprovincial Autonomous Communities have not been included because they are reflected in previous tables.

5. Number of travellers, overnight stays, average stay, capacity and occupancy rates in areas with the highest number of overnight stays

Areas	Number of travellers		Number of overnight stays		Average stay	Capacity		Occupancy rate		
	Residents In Spain	Residents abroad	Residents In Spain	Residents abroad		Estimated open rural establishments	Estimated bed-places	Of bed-places	Of bed-places at weekend	Of bedrooms
Pirineus	10,068	113	25,750	220	2.55	670	4,875	17.12	35.29	19.42
Pirineo Navarro	8,946	38	23,775	114	2.66	547	4,040	18.88	33.14	19.74
Pirineo Aragonés	5,608	324	15,625	1,237	2.84	535	3,983	13.54	23.05	14.01
Costa Brava	5,275	189	14,189	616	2.71	333	2,770	17.20	30.89	21.45
Isla de Tenerife	632	1,999	1,343	11,324	4.81	115	1,145	35.58	36.40	48.91
Catalunya Central	5,295	103	11,667	243	2.21	259	2,179	17.54	40.72	19.96
P.Nacional Teide	389	1,500	806	8,831	5.10	77	836	37.11	37.79	52.01
Isla de La Palma	248	601	1,749	5,618	8.68	273	1,161	20.47	18.89	39.80
Isla Gran Canaria	610	881	1,718	4,631	4.26	94	611	33.23	38.09	50.01
Costa Verde	1,855	7	6,191	13	3.33	368	3,932	5.09	11.65	7.84
Isla de Mallorca	550	1,077	1,030	4,728	3.54	67	1,149	16.15	19.23	19.24
Pirineo Vasco	2,012	39	4,772	73	2.36	123	1,272	12.23	22.58	13.28
P.Natural Sierra de Aracena y Picos de Aroche	2,020	16	4,670	119	2.35	92	746	20.68	48.29	30.99
P.Nacional Taburiente	144	336	1,125	3,224	9.07	157	688	20.41	16.96	40.14
Terres de Lleida	1,464	-	4,128	-	2.82	126	968	13.75	25.13	20.87

6. Number of travellers, overnight stays, average stay, capacity, occupancy rates and employed personnel per rural house by Autonomous City and Community³

Autonomous Communities	Number of travellers		Number of overnight stays		Average stay	Capacity		Occupancy rate		Employed personnel
	Residents In Spain	Residents abroad	Residents In Spain	Residents abroad		Estimated open rural establish.	Estimated bed-places	Of bed-places	Of bed-places at weekends	
TOTAL	137,730	6,975	344,341	40,562	2.66	12,117	93,079	13.29	25.10	15,491
Andalucía	15,831	1,752	40,795	11,082	2.95	1,398	11,524	14.47	23.16	1,889
Aragón	9,595	375	23,694	1,374	2.51	844	6,495	12.37	20.80	948
Asturias, Principado de	3,800	-	10,142	-	2.67	780	4,844	6.75	13.85	941
Balears, Illes	358	509	605	1,953	2.95	23	336	24.50	32.38	70
Canarias	794	2,322	3,786	17,970	6.98	606	3,042	23.04	24.38	763
Cantabria	1,996	25	4,990	56	2.50	122	1,765	9.20	23.99	144
Castilla y León	31,282	520	81,006	1,548	2.60	2,911	19,705	13.47	29.46	3,672
Castilla-La Mancha	16,396	112	38,827	884	2.41	1,337	11,047	11.57	24.85	1,762
Cataluña	20,043	566	50,479	2,587	2.57	1,410	10,537	16.19	31.50	1,802
Comunitat Valenciana	9,513	282	23,165	1,625	2.53	950	7,196	11.08	17.00	1,337
Extremadura	4,845	73	12,113	212	2.51	320	3,094	12.80	30.06	413
Galicia	4,997	139	8,938	364	1.81	344	4,097	7.31	14.58	472
Madrid, Comunidad de	1,216	26	2,697	84	2.24	65	614	14.55	37.35	87
Murcia, Región de	2,444	25	6,092	29	2.48	107	1,436	13.70	26.35	125
Navarra, Comunidad Foral de	8,807	35	22,965	104	2.61	612	4,527	16.30	29.95	695
País Vasco	3,760	147	8,085	605	2.22	186	1,874	14.89	25.61	249
Rioja, La	2,051	68	5,962	86	2.86	102	946	20.35	35.58	122
Ceuta	-	-	-	-	-	-	-	-	-	-
Melilla	-	-	-	-	-	-	-	-	-	-

³ To facilitate the comparability between data from different Autonomous Communities (and because of the different regulation and different characteristics), a group called rural house has been created, with those establishments with similar typology (location, capacity, etc...). The variables included in the previous table have been estimated with that type of establishments.

7. Travellers and overnight stays by country of residence

Results by countries	Travellers		Overnight stays	
	Total	%	Total	%
TOTAL	208,584	100.00	522,990	100.00
Residents Spain	196,983	94.44	464,653	88.85
Residents abroad	11,601	5.56	58,337	11.15
Total Residents abroad	11,601	100.00	58,337	100.00
Total Residents in EU (excluding Spain)	9,829	84.73	50,601	86.74
- Germany	3,623	31.23	26,542	45.50
- Belgium	305	2.63	1,148	1.97
- France	1,391	11.99	4,562	7.82
- Italy	300	2.58	998	1.71
- Netherlands	978	8.43	5,343	9.16
- Portugal	638	5.50	1,575	2.70
- United Kingdom	1,612	13.89	6,216	10.66
Switzerland	301	2.59	1,481	2.54
Other European countries	1,343	11.57	6,485	11.12
United States of America	258	2.23	1,101	1.89
Other countries	853	7.35	2,885	4.94

HOLIDAY DWELLING PRICE INDEX (HDPI)

December 2013

Provisional data

National general index and breakdown by rates

	Index	Annual variation rate
TOTAL	110.44	0.28
Normal	111.46	-2.87
Weekend	111.48	-1.05
Tour-operators and travel agencies	110.49	2.29

National general index and breakdown by modalities

	Index	Annual variation rate
TOTAL	110.44	0.28
Studio	113.85	2.32
Dwellings 2/4 bedplaces	108.91	0.77
Dwellings 4/6 bedplaces	115.99	-3.62

**Tourist Campsite Price Index (TCSPI). 2002 Base
December 2013**

Provisional data

National general index and breakdown by rates

	Index	Annual variation rate
TOTAL	136.13	1.80
Normal rate	132.04	2.25
Special rate for stays up to one month	135.79	2.76
Special rate for stays longer than one month	139.73	1.06

National general index and breakdown by categories

	Index	Annual variation rate
TOTAL	136.13	1.80
Luxury and first	140.42	3.29
Second	131.37	0.64
Third	168.88	5.86

Rural Tourism Accommodation Price Index (RTAPI)

December 2013

Provisional data

General Autonomous Cities and Communities and national indices

	Index	Annual variation rate
TOTAL	125.37	-1.93
Andalucía	124.29	0.51
Aragón	146.28	-2.65
Asturias, Principado de	124.72	-1.36
Balears, Illes	102.52	1.02
Canarias	104.43	-2.36
Cantabria	118.73	-6.68
Castilla y León	125.23	-4.68
Castilla - La Mancha	116.13	-3.19
Cataluña	123.56	-2.04
Comunitat Valenciana	128.67	-2.91
Extremadura	106.82	-2.87
Galicia	122.86	-2.05
Madrid, Comunidad de	136.56	4.87
Murcia, Región de	144.01	11.50
Navarra, Comunidad Foral de	175.69	0.01
País Vasco	123.59	-1.19
Rioja, La	124.14	-0.02
Ceuta	-	-
Melilla	-	-

National general index and breakdown by rates

	Index	Annual variation rate
TOTAL	125.37	-1.93
Normal	124.93	-1.54
Weekend	127.35	-2.09

National general index and breakdown by rent modality

	Index	Annual variation rate
TOTAL	125.37	-1.93
Shared use (in case of per room rent modality)	112.51	-2.78
Full use (rent of entire dwelling)	129.22	-1.71