

31st January 2019

Non-hotel Tourist Accommodation Occupancy Survey
December 2018 and year 2018. Provisional data

Overnight stays in non-hotel tourist accommodation decreased by 1.7% in December compared to the same month of 2017

In 2018, non-hotel overnight stays decreased by 2.6% to 127.2 million

Overnight stays in non-hotel tourist accommodation (holiday dwellings, tourist campsites, rural tourism accommodation and hostels) exceeded 6.2 million in December, 1.7% less than in the same month of 2017. Overnight stays by residents decreased by 0.5% and those by non-residents did so by 2.2%.

The average stay stood at 5.0 overnight stays per traveller.

Travellers and overnight stays in collective non-hotel tourist accommodation during the month of December were:

December 2018	Arrivals	Overnight stays
Residents	740,897	2,200,103
EU Residents (excluding Spain)	420,673	3,506,338
Rest of the world	97,013	590,878
TOTAL	1,258,583	6,297,319

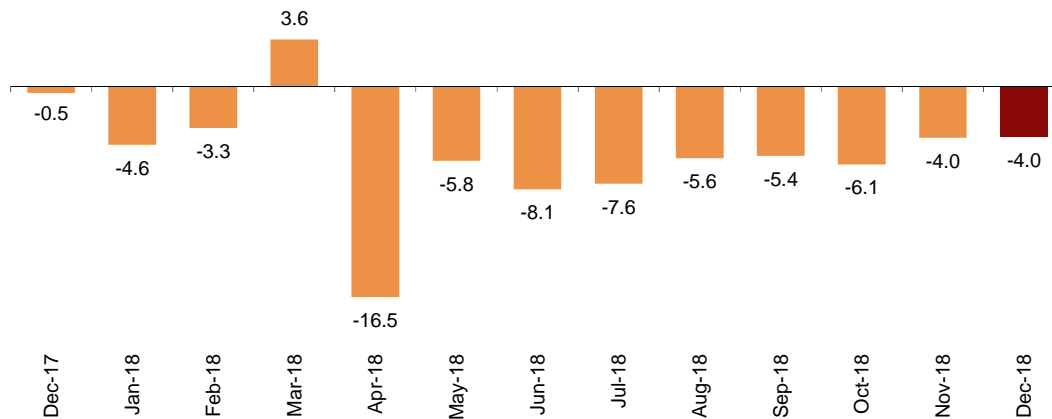
Holiday Dwellings

Overnight stays in holiday dwellings decreased by 4.0% in December. Resident overnight stays decreased by 1.1% and non-resident overnight stays did so by 4.8%.

The average stay decreased by 2.6% as compared with December 2017, standing at 5.8 overnight stays per traveller.

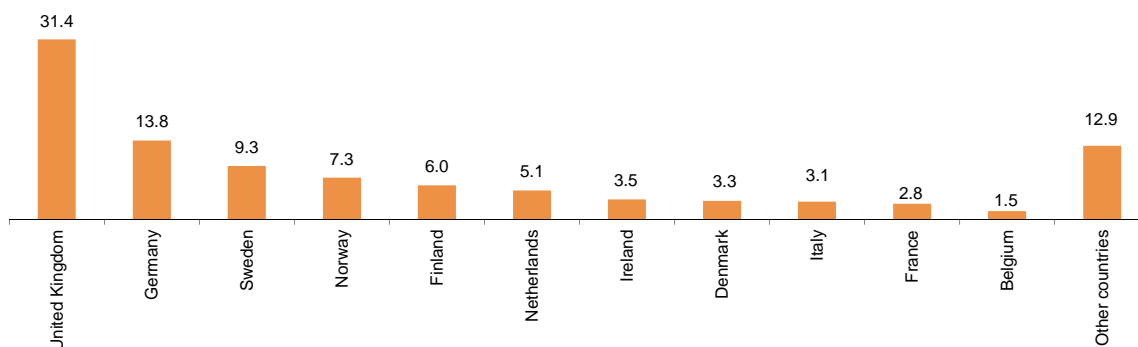
In December, 32.6% of the bedplaces available for holiday dwellings were occupied, 2.3% less than in the same month of 2017. The weekend occupancy rate by bed-places was 35.7%, with a decrease of 0.4%.

Annual variation rate for overnight stay
Percentage



Non-resident overnight stays in holiday dwellings represented 77.0% of the total. The United Kingdom was the main country of origin, with 991,597 overnight stays, 0.2% more than in December 2017. The following country of origin was Germany, with 436,280 overnight stays, 6.2% less.

Distribution of non-residents overnight stays. Main country of residence
Percentage



Canarias was the preferred destination for holiday dwellings, with more than 2.4 million overnight stays and a decrease of 7.3% compared to December 2017. These islands also reached the highest occupancy rate, with 77.4% of holiday dwellings offered.

By tourist areas, the island of Gran Canaria was the preferred destination, with 878,689 overnight stays and an occupancy of 82.9% of holiday dwellings offered.

The tourist sites with the highest number of overnight stays in December were San Bartolomé de Tirajana, Arona and Mogán.

Tourist campsites

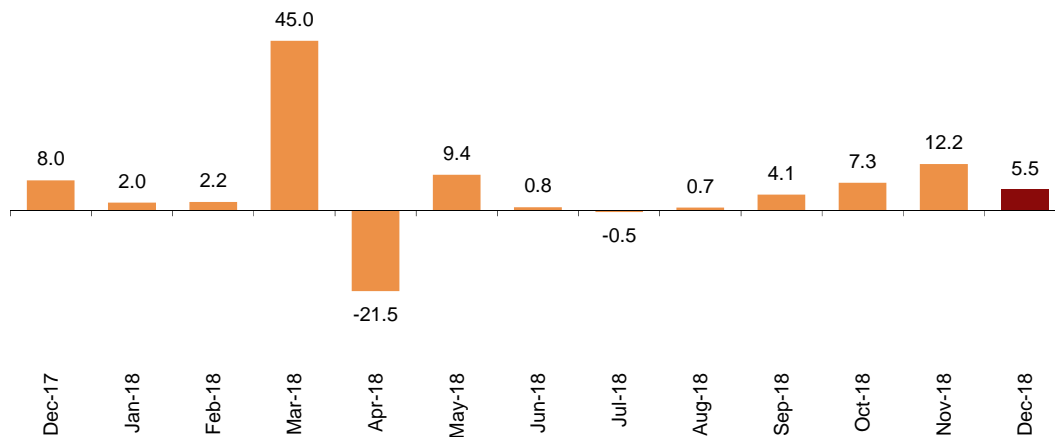
Overnight stays at tourist campsites registered an increase of 5.5% in December as compared with the same month in 2017. Overnight stays by residents dropped by 0.4%, whilst those by non-residents increased by 8.4%.

In December, 37.1% of the pitches offered were occupied, 0.6% more than in the same month of 2017. The weekend occupancy rate by pitch reached 37.7%, with an annual increase of 0.5%.

68.3% of overnight stays on tourist campsites were made by non-residents. The United Kingdom was the main country of origin, with 35.7% of the overnight stays by non-residents, 9.0% more than in December 2017.

Annual variation rate for overnight stays

Percentage



Comunitat Valenciana was the preferred destination for tourist campsites, with 603,889 overnight stays, representing an annual increase of 9.5%. La Rioja reached the highest occupancy rate, with 69.8% of the pitches offered.

By tourist areas, Costa Blanca was the preferred destination, with 329,099 overnight stays and an occupancy rate of 78.3% of the pitches offered.

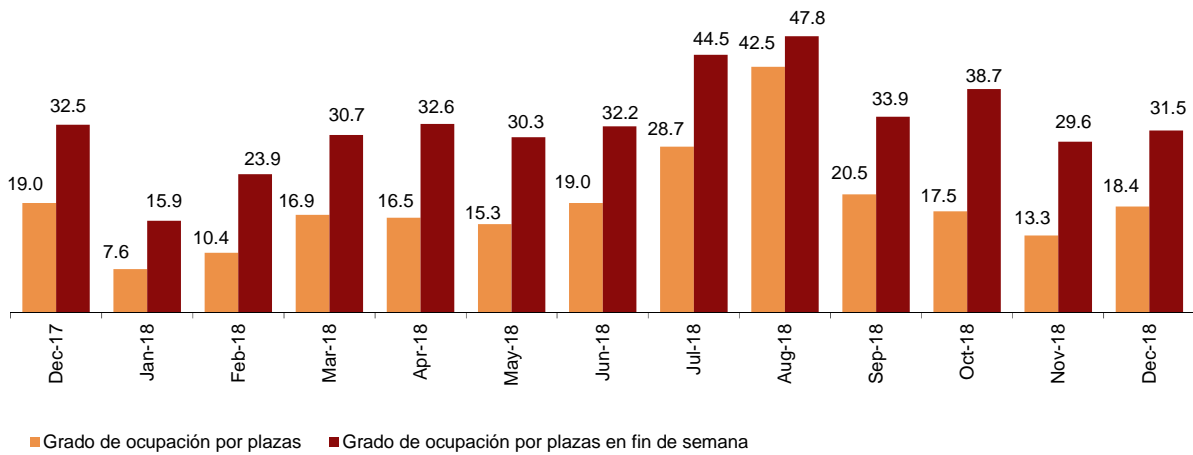
The tourist places with the most overnight stays were Benidorm, Cartagena and Marbella.

Rural tourism accommodation

Overnight stays in rural tourism accommodation had an annual decrease of 0.2% in December. Overnight stays by residents dropped by 0.5%, whilst those by non-residents increased by 3.1%.

In rural tourism accommodation, 18.4% of bedplaces were occupied, 3.1% less than in December 2017. The weekend occupancy rate stood at 31.5%, with an annual decrease of 3.2%.

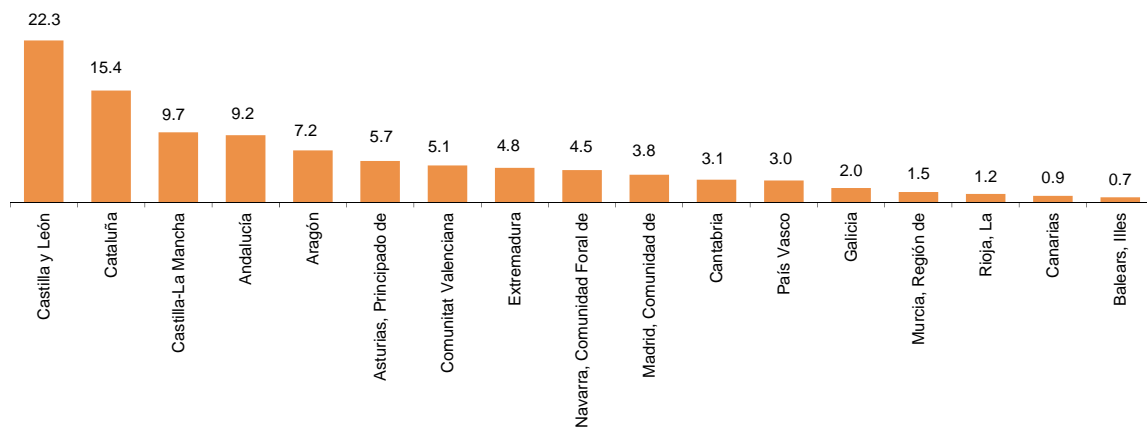
Occupancy rate Percentage



By Autonomous Community, Castilla y León was the preferred destination, with 178,141 overnight stays, 5.0% more than in December 2017. Canarias reached the highest occupancy rate, with 36.7% of bedplaces offered.

By tourist area, Pirineus was the main destination, with 49,633 overnight stays. The Corona Forestal Natural Park reached the highest occupancy rate, with 44.6% of the bed-places offered.

Distribution of overnight stays: residents Percentage

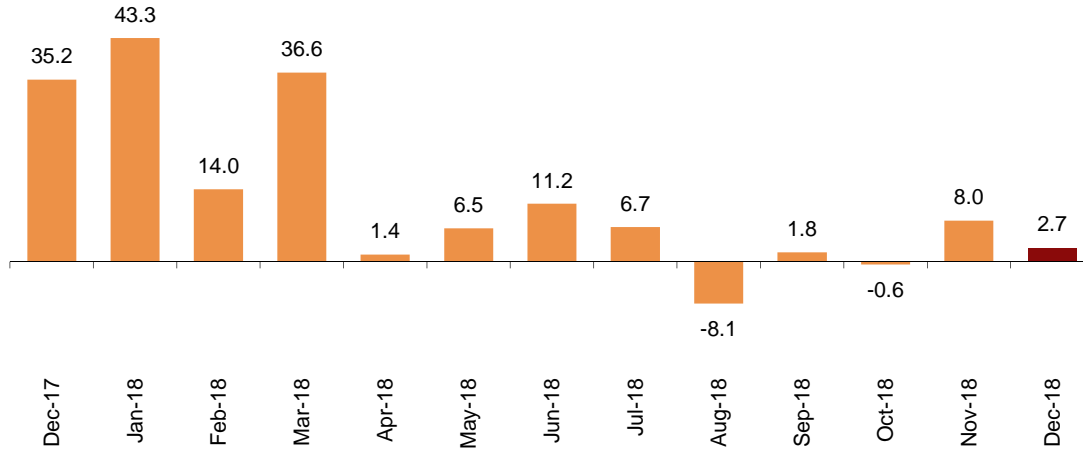


Hostels

Overnight stays in hostels registered an annual increase of 2.7% in December. Overnight stays by residents increased 4.1%, while those by non-residents decreased by 0.5%.

Annual variation rate for overnight stays

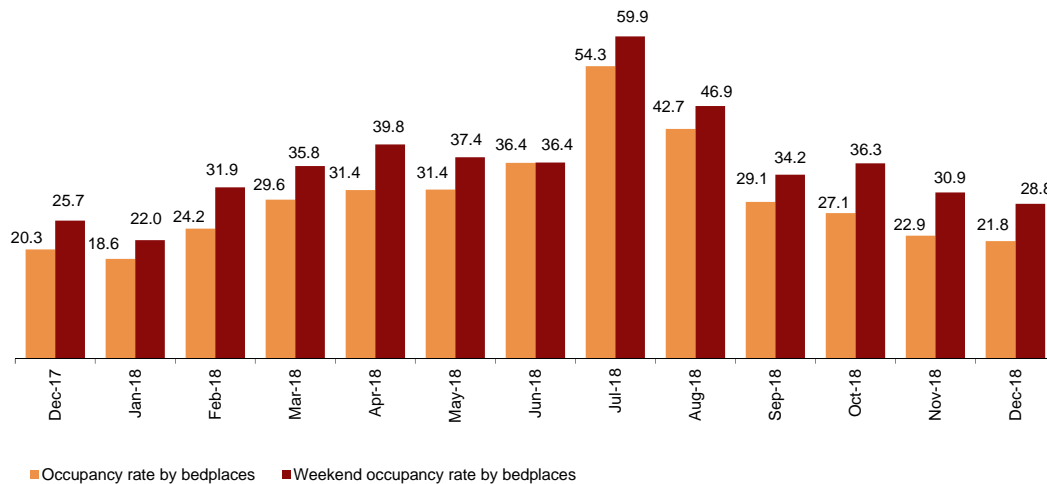
Percentage



21.8% of the bedplaces were occupied, 7.5% more than in December 2017. The weekend occupancy rate reached 28.8%, with a 12.1% increase.

Occupancy rate

Percentage



By Autonomous Community, Cataluña was the preferred destination, with 40,206 overnight stays, 2.1% less than in December 2017. Canarias reached the highest occupancy rate, with 58.8% of the bed-places offered.

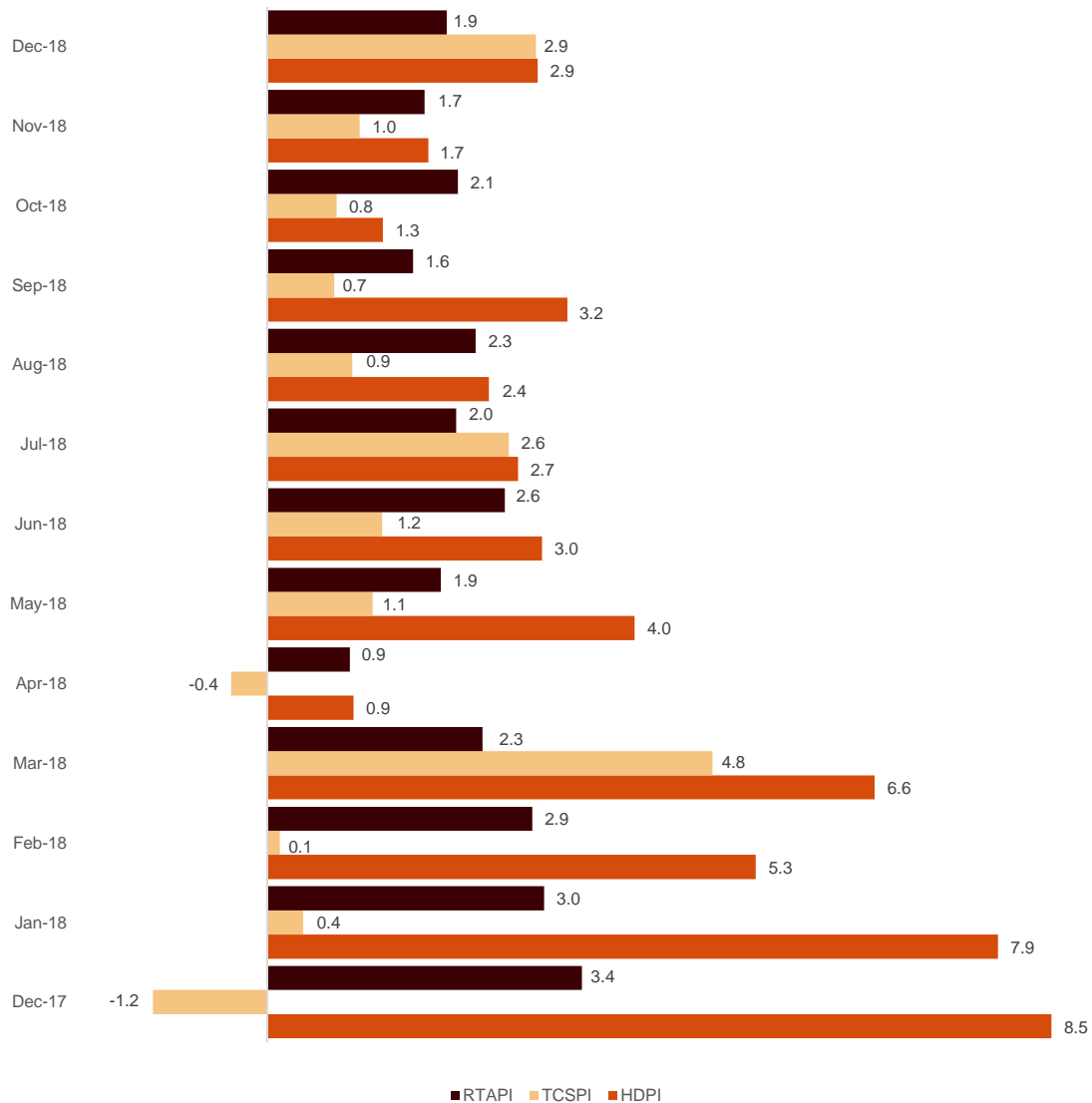
Price indices

The Holiday Dwelling Price Index (HDPI) increased 2.9%, as compared with December 2017. The rate for *tour operators and travel agencies*, which carried the greatest weight in the weighting structure for this month (58.9%), increased by 2.9%.

The Tourist Campsite Price Index (TCPI) increased by 2.9% in the annual rate. The *bungalow* rate, which carried the greatest weight in the weightings structure in December (34.3%), increased by 2.7% as compared with the same month of 2017.

The Rural Tourism Accommodation Price Index (RTAPI) registered a 1.9% increase in December. The *weekend rate*, which accounted for 60.5% of the total weight, increased by 2.2% in the annual rate.

Prices Indices. Annual variation rate Percentage



Evolution of travellers and overnight stays in all Spanish collective tourist accommodation

In December, overnight stays in Spanish collective tourist accommodation (hotels¹, holiday dwellings, tourist campsites, rural tourism accommodation and hostels) registered a 1.4% increase in the annual rate. Overnight stays by residents dropped by 0.8%, whilst those by non-residents increased by 2.9% compared to December 2017.

The average stay decreased 2.1%, and stood at 3.1 overnight stays per traveller.

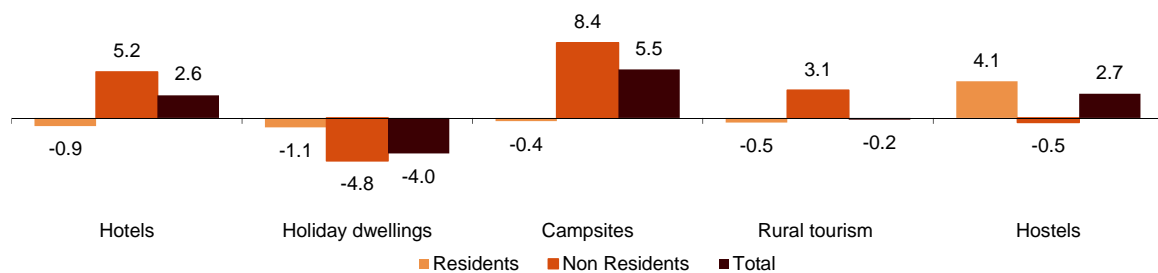
Travellers and overnight stays in collective tourist accommodation were:

December 2018	Holiday dwellings	Campsites	Rural T.	Hostels	Non-hotel	Hotels	Total
Arrivals	704,313	174,601	332,325	47,344	1,258,583	6,058,091	7,316,674
Residents	275,875	123,219	307,983	33,820	740,897	3,484,893	4,225,790
Non-residents	428,437	51,383	24,342	13,524	517,686	2,573,199	3,090,885
Overnight stays	4,102,234	1,190,642	864,792	139,651	6,297,319	16,626,731	22,924,050
Residents	944,795	377,802	779,027	98,479	2,200,103	6,921,699	9,121,802
Non-residents	3,157,439	812,840	85,765	41,172	4,097,216	9,705,032	13,802,248

Of the total overnight stays in collective tourist accommodation, 73% corresponded to hotels, and 27% to non-hotel tourist accommodation.

Overnight stays in collective tourist accommodation. Annual variation rate

Percentage



The main countries of origin for all regulated tourist accommodation were the United Kingdom (with 25.5% of the total number of non-resident overnight stays), Germany (17.2%) and France (5.5%).

Canarias was the preferred destination, with 7.8 million overnight stays (4.4% less than in December 2017). It was followed by Andalucía, with 3.2 million overnight stays (and an increase of 2.9%) and Cataluña, with over 2.8 million, (and an annual increase of 10.9%).

¹ The press release corresponding to Hotel Tourism Short-Term Trends was published on 23 January.

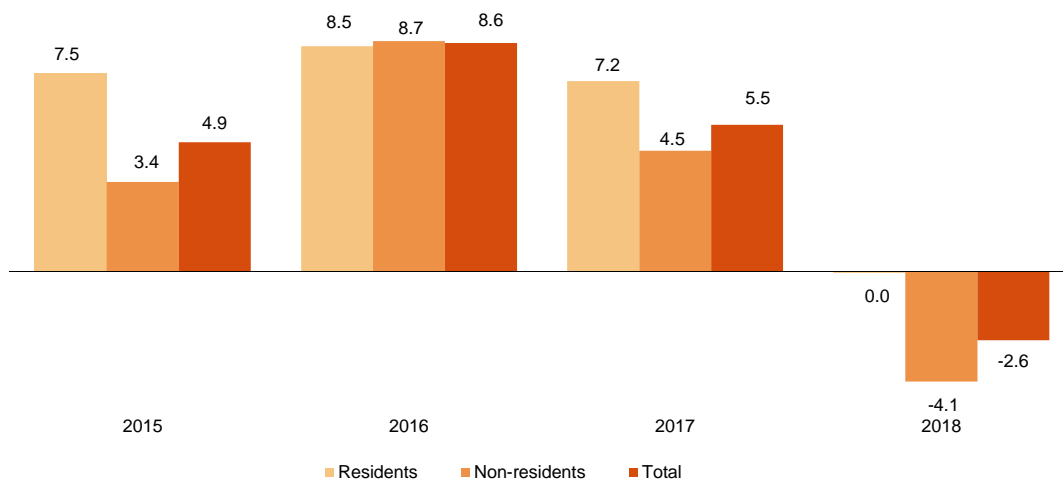
Results for the whole year 2018

Overnight stays in non-hotel tourist accommodation (holiday dwellings, tourist campsites, rural tourism accommodation and youth hostels) reached 127.2 million in 2018, 2.6% less than in 2017. Resident overnight stays did not change compared to 2017, while non-resident overnight stays decreased by 4.1%.

58% of overnight stays were made in holiday dwellings, 31% in campsites, 9% in rural tourism accommodation and the remaining 2% in hostels.

Annual variation rate for overnight stays

Percentage



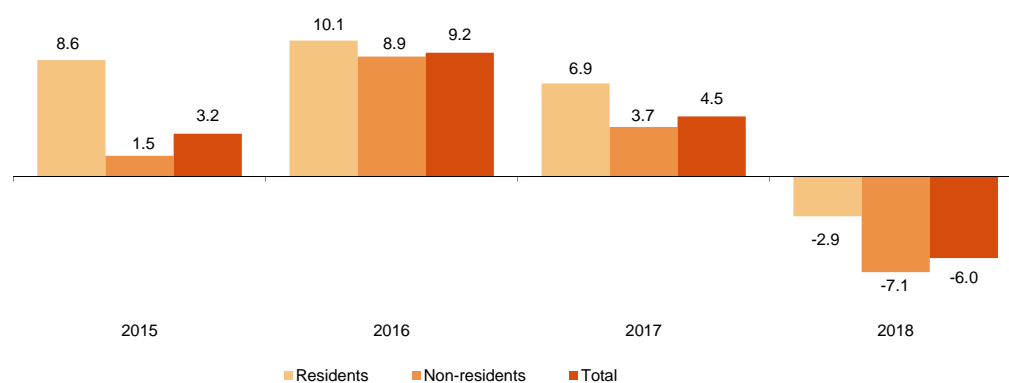
Holiday Dwellings

Overnight stays in holiday dwellings decreased by 6.0% in 2018. Resident overnight stays decreased by 2.9% and those of non-residents by 7.1%.

Non-resident travellers, who represented 63.0% of the total, made 74.1% of the total overnight stays in holiday dwellings.

Annual variation rate for overnight stays

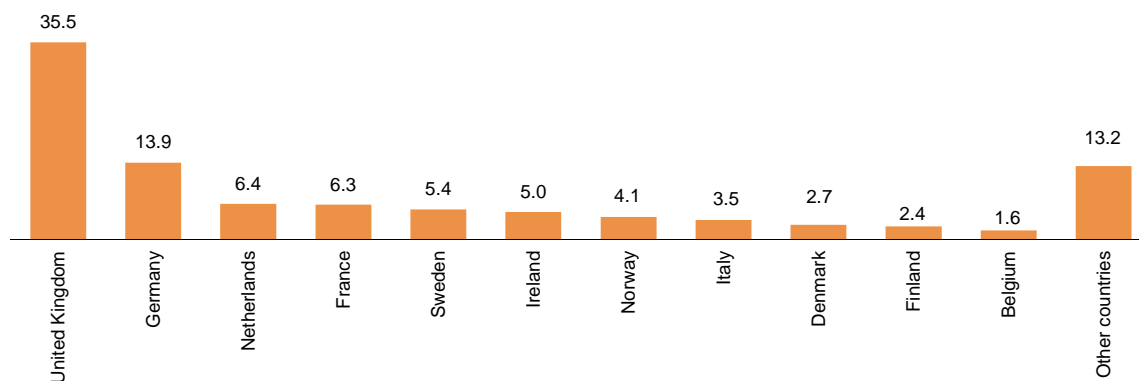
Percentage



In the year 2018, on average 39.0% of the bedplaces available for holiday dwellings were occupied, 4.6% less than in 2017. The weekend occupancy rate by bedplaces stood at 41.9%, with a decrease of 4.4%.

The United Kingdom became the main country of origin for holiday dwellings, with 19.3 million overnight stays, 9.1% less than in 2017. The following country of origin was Germany, with more than 7.5 million overnight stays and an annual decrease of 5.3%.

Distribution of non-residents overnight stays. Main country of residence. Year 2018
Percentage



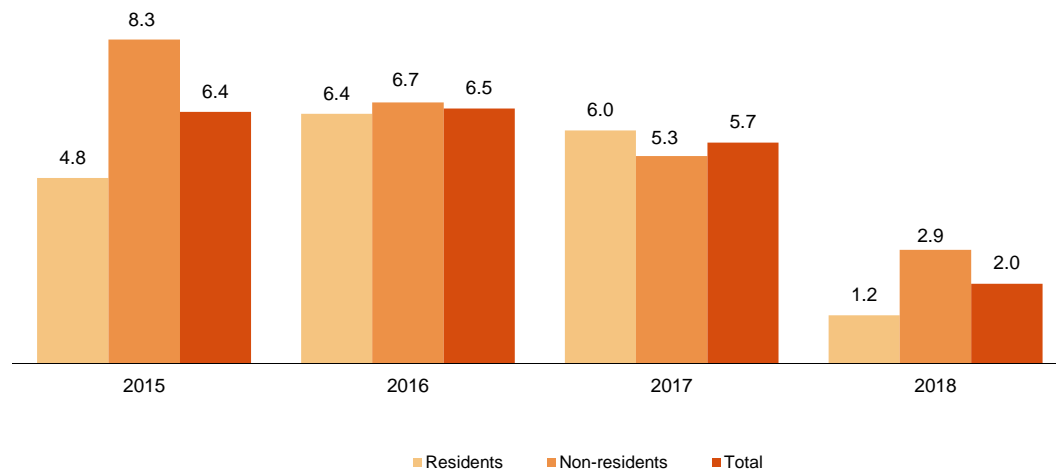
Canarias was the preferred holiday dwellings destination, with more than 30.2 million overnight stays, 7.7% less than in 2017. The second destination was Comunitat Valenciana, with over 10.5 million overnight stays, 10.2% less.

Canarias and Illes Balears registered the highest average occupancy rates per dwelling, with 77.7% and 73.5%, respectively.

Tourist campsites

Overnight stays at tourist campsites increased by 2.0% in 2018. Resident overnight stays grew by 1.2% and those of non-residents 2.9%.

Annual variation rate for overnight stays
Percentage



On average, the number of bedplaces offered by campsites was 500,222, which is 1.2% more than in 2017. 40.2% of the offered pitches were occupied, 0.7% more. The average weekend occupancy rate by plot reached 42.5%, 0.2% less than in 2017.

48.8% of overnight stays at tourist campsites were by non-resident travellers. The Netherlands is the main country of origin with 21.9% of total overnight stays, 1.0% less than in 2017.

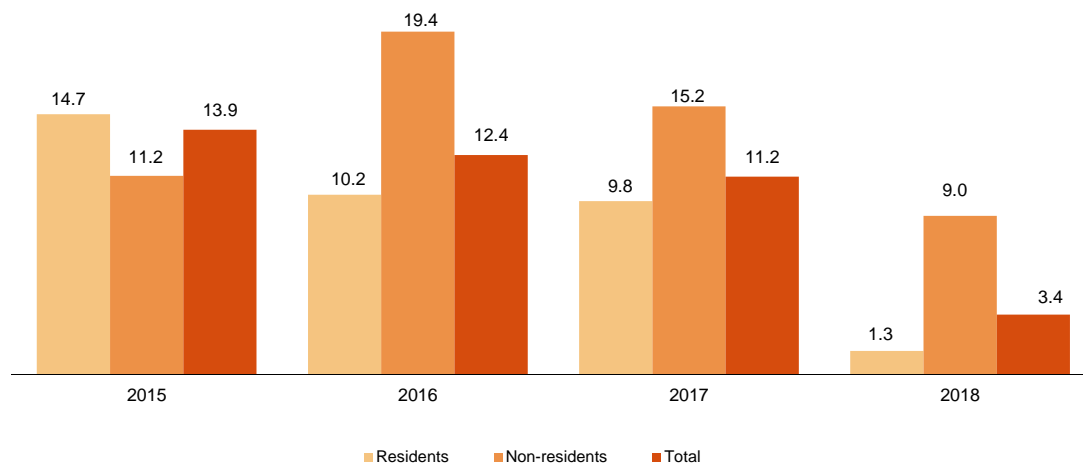
Cataluña was the preferred destination for tourist campsites, with over 16.9 million overnight stays, 0.4% more than in 2017. On the other hand, La Rioja reached the highest occupancy rate on average, with 63.6% of the pitches offered.

Rural tourism accommodation

Overnight stays at rural tourism accommodation increased by 3.4% in 2018. Resident overnight stays grew by 1.3% and non-residents 9.0%.

Annual variation rate for overnight stays

Percentage



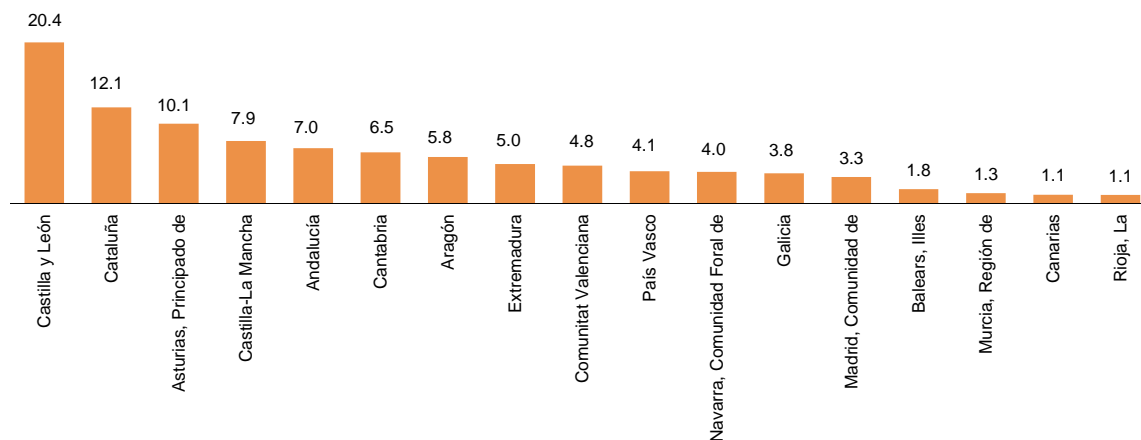
On average, the number of bedplaces offered by rural tourism accommodation was 159,975, which is 2.7% more than in 2017. The average occupancy rate was 19.3%, with an increase of 0.6%. The weekend occupancy rate decreased by 1.1% to 33.1%.

Castilla y León was the preferred destination, with 1.8 million overnight stays, 6.6% more than in 2017.

Illes Balears reached, on average, the highest occupancy rate, with 48.5% of the bedplaces offered.

Distribution of residents overnight stays by autonomous of destination. Year 2018

Percentage

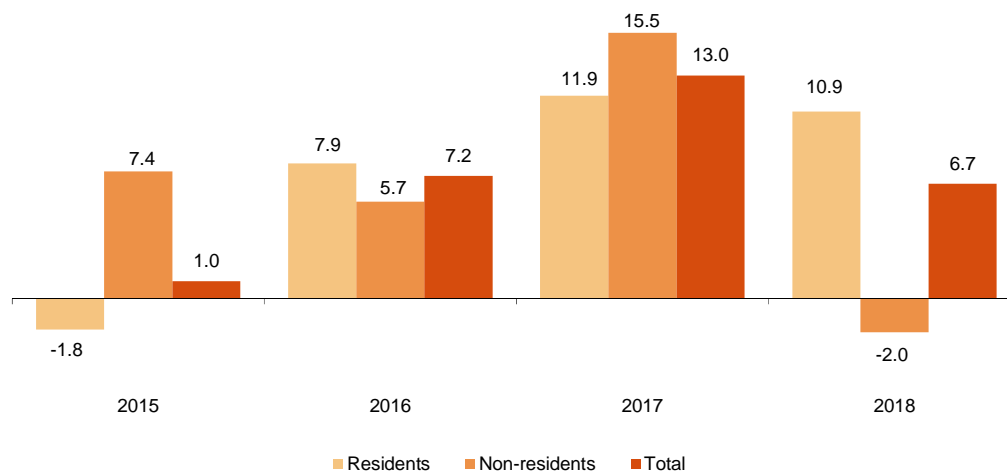


Hostels

Overnight stays in hostels increased by 6.7% in 2018 as a whole. Overnight stays by residents increased by 10.9% while those by non-residents decreased by 2.0%.

Annual variation rate for overnight stays

Percentage



On average, the number of bedplaces offered by youth hostels was 24,958, which is 2.3% more than in 2017. The average occupancy rate was 31.9%, with an increase of 4.4%. The weekend occupancy rate increased by 2.2%, standing at 37.7%.

By Autonomous Community, Cataluña was the preferred destination, with 953,257 overnight stays, 3.5% less than in 2017.

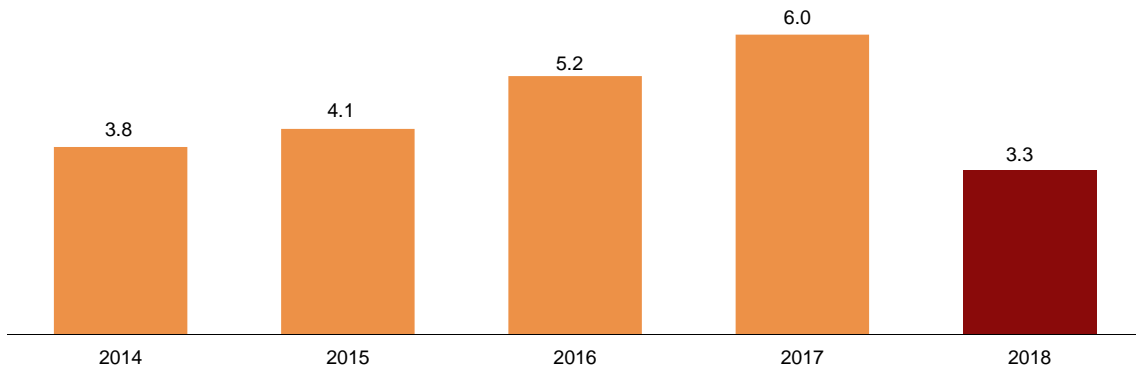
On average, the Comunidad de Madrid reached the highest occupancy rate, with 48.7% of bedplaces offered.

Non-hotel Tourist Accommodation Price Indices

In 2018, the Holiday Dwelling Price Index (HDPI) registered an average increase of 3.3%.

Holiday dwelling Price index

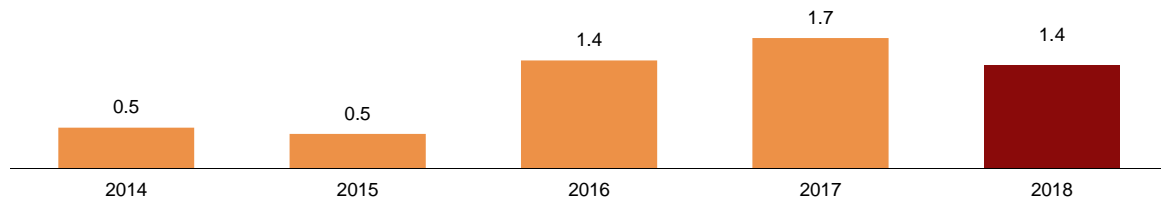
Annual variation rate. Percentage



On the other hand, the Tourist Campsite Price Index (TCPI) increased by 1.4%.

Tourist campsite Price index

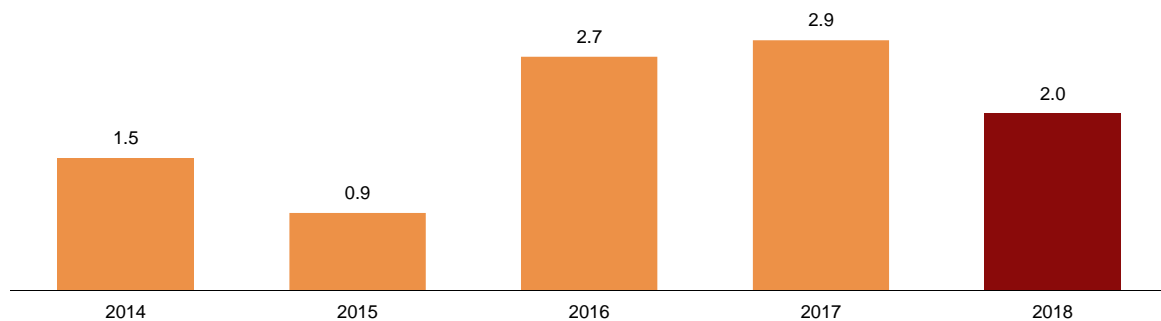
Annual variation rate. Percentage



The Rural Tourism Accommodation Price Index (RTAPI) registered an average increase of 2.0% in 2018.

Rural tourism accommodation Price index

Annual variation rate. Percentage



Evolution of travellers and overnight stays in the different types of Spanish collective tourist accommodation in 2018

Overnight stays in all Spanish collective tourist accommodation (hotels², holiday dwellings, tourist campsites, rural tourism accommodation and youth hostels) exceeded 467.4 million in 2018, with a decrease of 0.8% compared to the previous year.

Resident overnight stays increased 0.4% while non-resident overnight stays decreased 1.4%. The average stay decreased by 1.8%, to 3.6 overnight stays per traveller.

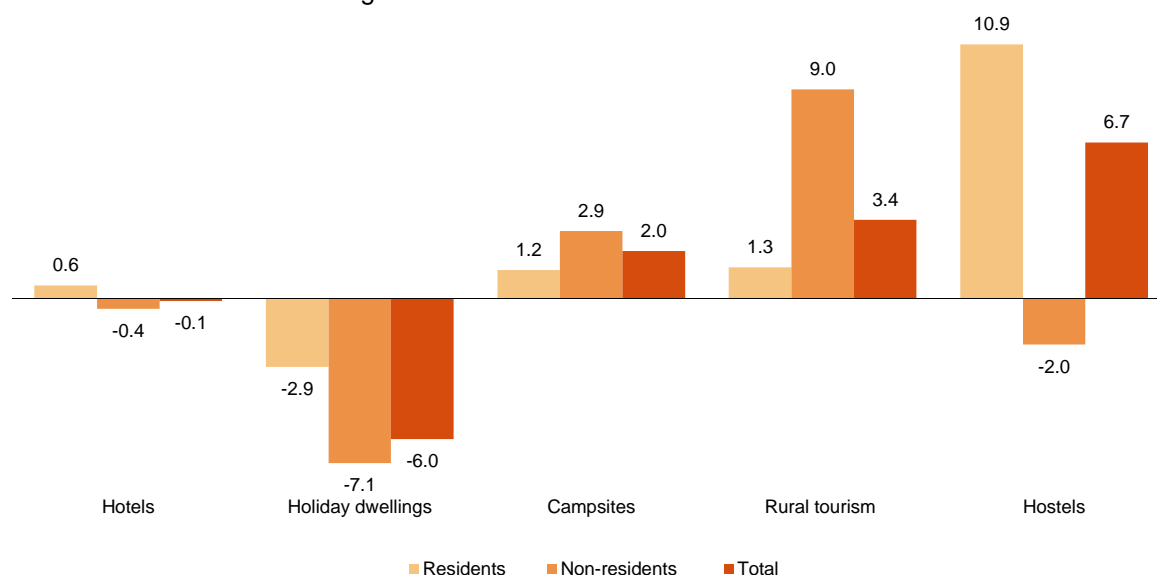
Travellers and overnight stays in collective tourist accommodation were³:

Year 2018	Holiday dwellings	Campsites	Rural T.	Hostels	Non-hotel	Hotels	Total
Arrivals	12,277,366	7,883,002	4,250,768	1,079,526	25,490,662	105,259,817	130,750,480
Residents	4,538,970	5,190,879	3,377,784	735,407	13,843,040	51,112,894	64,955,934
Non-residents	7,738,397	2,692,123	872,984	344,120	11,647,624	54,146,923	65,794,547
Overnight stays	73,428,512	39,500,783	11,407,883	2,910,844	127,248,021	340,251,479	467,499,501
Residents	19,007,005	20,220,527	8,184,068	2,036,543	49,448,144	116,484,087	165,932,231
Non-residents	54,421,507	19,280,255	3,223,815	874,300	77,799,877	223,767,392	301,567,269

Of the total number of overnight stays in collective tourist accommodation, 73% corresponded to hotels and 27% to non-hotel tourist accommodation.

Overnight stays in collective tourist accommodation. Year 2018

Annual variation rate. Percentage



The main countries of origin were the United Kingdom (with 26.8% of the total number of non-resident overnight stays), Germany (19.3%) and France (8.6%).

By Autonomous Community, Canarias was the preferred destination, with 99.9 million overnight stays, 4.3% less than in 2017. It was followed by Cataluña, (with over 82.0 million overnight stays and an decrease of 1.2%) and Illes Balears (with 70.4 million and a decrease of 0.4%).

² The press release corresponding to Hotel Tourism Short-Term Trends was published on 23 January.

³ The results presented in the table are the sum of the monthly figures. Possible discrepancies between the subtotals and the total are justified, since the data are presented without decimal places, but are calculated taking them into account. Therefore, the differences are explained by rounding.

Revision and updating of data

Coinciding with today's publication, the INE has updated the data for December 2017 in the Holiday Dwelling Price Index (HDPI), the Tourist Campsite Price Index (TCPI) and the Rural Tourism Accommodation Price Index (RTAPI). Meanwhile, the occupancy survey data published today is provisional and will be reviewed in the third quarter of the year.

Methodological note

The main objective of the Holiday Dwelling Occupancy Survey (HDOS) is to ascertain the behaviour of a series of variables that make it possible to describe the segment that occupies this type of accommodation within the tourist sector, both from the point of view of supply and demand.

The Holiday Dwelling Price Index (HDPI) is a statistical measure of the monthly evolution of the prices that holiday dwelling apply to their clients.

Type of operation: monthly continuous survey.

Population scope: holiday dwellings and/or companies operating holiday dwellings.

Geographical scope: the entire national territory, with the exception of Ceuta and Melilla where there are no establishments of this type.

Reference period of the results: the month.

Reference period of the information: The consultation of basic data refers to a fortnight of the month, chosen randomly, in such a way that among all the establishments they cover the complete month.

Type of sampling: stratified sampling by province and size of establishment, and for Canarias and Illes Balears stratified at island-size level.

Collection method: questionnaire filled in directly by the establishment.

For more information on these statistical operations, you can consult the [methodology and the standardised methodological report](#) for each of them in INEbase.

The main objective of the Campsite Occupancy Survey (COS) is to ascertain the behaviour of a series of variables that make it possible to describe the segment that occupies this type of accommodation within the tourist sector, both from the point of view of supply and demand.

The Tourist Campsite Price Index (TCPI) is a statistical measure of the monthly evolution of the prices that campsites apply to their clients.

Type of operation: monthly continuous survey.

Population scope: camping establishments.

Geographical scope: the entire national territory, with the exception of Ceuta and Melilla where there are no establishments of this type.

Reference period of the results: the month.

Reference period of the information: seven consecutive days of each month, chosen randomly in such a way that all the establishments cover the whole month.

Sample size: approximately 1200 establishments.

Type of sampling: comprehensive survey in all provinces.

Collection method: questionnaire filled in directly by the establishment.

For more information on these statistical operations, you can consult the [methodology and the standardised methodological report](#) for each of them in INEbase.

The main objective of the Rural Tourism Accommodation Occupancy Survey (RTAOS) is to ascertain the behaviour of a series of variables that make it possible to describe the fundamental characteristics of this type of accommodation within the tourist sector, both from the point of view of supply and demand.

The Rural Tourism Accommodation Price Index (RTAPI) is a statistical measure of the monthly evolution of the prices that entrepreneurs of this type of accommodation apply to their clients.

Type of operation: monthly continuous survey.

Population scope: rural tourism establishments registered as such in the corresponding register of each Autonomous Community.

Geographical scope: the entire national territory, with the exception of Ceuta and Melilla where there are no establishments of this type.

Reference period of the results: the month.

Reference period of the information: The consultation of basic data refers to all the days of the month.

Type of sampling: comprehensive survey in all provinces except those where the population size is large enough to take a sample.

Collection method: questionnaire filled in directly by the establishment.

For more information on these statistical operations, you can consult the [methodology and the standardised methodological report](#) for each of them in INEbase.

The main objective of the Hostels Occupancy Survey (HOS) is to ascertain the behaviour of a series of variables that make it possible to describe the fundamental characteristics of this type of accommodation within the tourist sector, both from the point of view of supply and demand.

For more information on this statistical operation, you can consult the [methodology and the standardised methodological report](#) in INEbase.

For further information see **INEbase:** www.ine.es/en/ Twitter: [@es_ine](https://twitter.com/es_ine)

All press releases at: www.ine.es/en/prensa/prensa_en.htm

Press office: Telephone numbers: (+34) 91 583 93 63 /94 08 – gprensa@ine.es

Information Area: Telephone number: (+34) 91 583 91 00 – www.ine.es/infoine/?L=1

Tourist Accommodation Occupancy Survey (Holiday Dwellings)

December 2018

Provisional data

31st January 2019

1. Travellers, overnight stays and average stay by Autonomous Cities and Communities

Autonomous Cities and Communities	Travellers			Overnight stays			Average stay
	Total	Residents in Spain	Residents abroad	Total	Residents in Spain	Residents abroad	
TOTAL	704,313	275,875	428,437	4,102,234	944,795	3,157,439	5.82
Andalucía	153,693	81,050	72,643	525,266	205,054	320,211	3.42
Aragón	15,367	14,187	1,180	47,261	43,138	4,124	3.08
Asturias, Principado de	3,676	3,589	88	8,442	8,231	211	2.30
Balears, Illes	4,897	1,147	3,750	34,308	6,709	27,599	7.01
Canarias	303,634	33,060	270,573	2,489,451	174,308	2,315,143	8.20
Cantabria	13,640	12,873	767	36,402	34,112	2,290	2.67
Castilla y León	14,772	12,819	1,953	35,594	31,586	4,008	2.41
Castilla - La Mancha	10,548	10,231	317	35,897	32,692	3,205	3.40
Cataluña	37,443	22,585	14,858	200,957	117,437	83,521	5.37
Comunitat Valenciana	75,828	34,925	40,903	425,023	126,214	298,809	5.61
Extremadura	5,739	5,153	587	11,495	10,398	1,097	2.00
Galicia	5,756	5,166	591	16,179	14,408	1,772	2.81
Madrid, Comunidad de	37,433	21,942	15,491	144,869	76,058	68,811	3.87
Murcia, Región de	4,038	3,071	967	26,104	15,662	10,442	6.46
Navarra, Comunidad Foral de	6,315	5,347	969	21,834	16,731	5,103	3.46
País Vasco	8,018	5,308	2,710	33,444	22,790	10,654	4.17
Rioja, La	3,516	3,422	94	9,709	9,268	441	2.76
Ceuta	-	-	-	-	-	-	-
Melilla	-	-	-	-	-	-	-
Annual rate	-1.44	-1.64	-1.31	-3.96	-1.05	-4.80	-2.56
Cumulative annual rate	-3.04	-0.26	-4.60	-6.04	-2.94	-7.08	-3.10

2. Capacity, occupancy and number of staff by Autonomous Cities and Communities

Autonomous Cities and Communities	Capacity		Level of occupancy				Employed personnel
	Estimated bedplaces	Estimated Holiday dwelling	Per bedplaces	Per bedplaces at weekend	Per Holiday dwelling	Per Holiday dwelling at weekend	
TOTAL	404,609	106,460	32.58	35.66	53.25	56.88	23,351
Andalucía	66,213	16,787	25.47	31.13	39.32	46.25	4,024
Aragón	8,545	1,945	17.76	26.55	24.06	33.27	536
Asturias, Principado de	3,668	946	7.42	9.87	10.74	14.97	238
Balears, Illes	3,489	941	31.76	34.54	50.88	54.59	206
Canarias	150,594	46,003	52.98	54.25	77.44	78.74	11,538
Cantabria	4,561	1,213	25.71	37.34	33.71	46.17	341
Castilla y León	5,911	1,337	19.36	28.08	27.62	36.56	489
Castilla - La Mancha	5,580	1,354	20.69	28.84	28.03	37.14	407
Cataluña	22,502	5,604	28.69	33.69	44.39	50.43	980
Comunitat Valenciana	101,469	21,275	13.52	14.94	26.64	29.13	2,377
Extremadura	1,836	455	20.17	29.75	30.70	41.58	199
Galicia	3,896	992	13.31	18.67	25.58	32.30	248
Madrid, Comunidad de	9,873	3,851	47.21	55.89	64.00	72.53	624
Murcia, Región de	8,174	1,863	10.30	11.26	22.19	23.71	236
Navarra, Comunidad Foral de	2,611	504	26.91	32.55	38.46	44.43	564
País Vasco	4,071	1,045	26.37	31.25	47.20	51.94	246
Rioja, La	1,616	346	19.30	27.49	31.10	42.04	99
Ceuta	-	-	-	-	-	-	-
Melilla	-	-	-	-	-	-	-
Annual rate	-1.82	-2.81	-2.25	-0.36	-1.80	-0.32	-0.21
Cumulative annual rate	-1.42	-0.67	-4.63	-4.43	-4.37	-4.12	0.27

3. Travellers, overnight stays, capacity, occupancy, total number of staff with greater number of overnight stays¹

Provinces	Travellers		Overnight stays			Capacity		Level of occupancy			Employed personnel
	Residents in Spain	Residents abroad	Residents in Spain	Residents abroad	Average stay	Estimated bed-places	Estimated holiday dwelling	Per bed-places	Per Holiday dwelling	Per Holiday dwelling at weekend	
Palmas, Las	19,405	176,609	100,612	1,507,620	8.20	97,189	29,463	53.03	78.98	80.31	7,298
Santa Cruz de Tenerife	13,655	93,964	73,697	807,524	8.19	53,405	16,541	52.89	74.70	75.93	4,240
Alicante/Alacant	18,084	30,324	69,842	246,794	6.54	75,282	16,084	13.59	27.87	30.05	1,797
Málaga	26,784	44,680	71,301	237,827	4.33	37,461	9,369	26.56	43.03	47.41	2,373
Barcelona	8,178	12,564	76,424	73,033	7.21	9,293	2,818	51.68	68.85	74.31	490
Sevilla	18,973	16,760	45,011	43,614	2.48	6,625	1,912	42.70	60.60	73.79	535
Valencia/València	8,136	9,835	24,104	44,540	3.82	13,061	2,749	16.95	29.57	34.03	419
Granada	17,707	6,663	46,141	18,568	2.66	7,275	1,808	28.25	37.22	51.93	434
Castellón/Castelló	8,705	744	32,268	7,475	4.21	13,126	2,441	9.76	15.26	17.66	161
Huesca	7,605	492	24,107	1,044	3.11	5,408	1,189	14.97	18.22	26.56	286
Girona	6,551	1,501	16,700	6,711	2.91	8,290	1,732	9.09	15.78	20.05	321
Lleida	5,569	199	18,470	1,165	3.40	2,955	663	21.43	28.59	40.33	91
Cádiz	4,856	2,225	12,058	5,412	2.47	3,713	961	15.18	23.32	29.94	289
Almería	1,884	698	5,035	11,772	6.51	6,028	1,374	8.99	16.07	18.14	116
Gipuzkoa	2,137	1,676	9,077	6,641	4.12	2,303	562	21.90	37.01	41.54	145

¹ Provinces belonging to uniprovincial Autonomous Communities have not been included because they are reflected in previous tables.

4. Travellers, overnight stays, capacity, occupancy, total number of staff from tourist areas with greater number of overnight stays

Tourist Areas	Travellers		Overnight stays			Capacity		Level of occupancy			Employed personnel
	Residents in Spain	Residents abroad	Residents in Spain	Residents abroad	Average stay	Estimated bed-places	Estimated holiday dwelling	Per bed-places	Per Holiday dwelling	Per Holiday dwelling at weekend	
Isla de Gran Canaria	8,954	91,995	45,711	832,978	8.70	49,539	15,271	56.86	82.90	83.87	3,612
Isla de Tenerife	10,699	88,435	61,219	749,702	8.18	47,398	14,487	54.84	77.23	78.37	3,688
Isla de Lanzarote	6,669	59,552	39,058	473,615	7.74	31,610	9,372	51.95	77.68	79.29	2,523
Costa Blanca	17,811	28,970	68,538	235,818	6.51	71,922	15,451	13.65	28.04	30.26	1,743
Costa del Sol	21,580	42,339	59,819	230,634	4.54	35,184	8,734	26.57	43.88	47.63	2,249
Isla de Fuerteventura	3,782	25,062	15,843	201,027	7.52	16,040	4,820	43.33	69.07	71.04	1,164
Costa Barcelona	3,081	2,082	60,134	29,098	17.28	4,641	1,613	62.03	75.31	77.64	156
Barcelona	3,405	10,447	11,395	43,695	3.98	4,145	1,048	42.08	63.03	70.87	316
Costa de Castellón	8,322	744	30,992	7,475	4.24	12,505	2,304	9.92	15.59	17.92	135
Isla de la Palma	1,683	2,980	6,355	31,413	8.10	2,622	925	46.17	65.30	67.13	284

5. Travellers, overnight stays, capacity, occupancy, total number of staff from tourist sites with greater number at overnights stays

Tourist sites	Travellers		Overnight stays			Capacity		Level of occupancy			Employed personnel
	Residents in Spain	Residents abroad	Residents in Spain	Residents abroad	Average stay	Estimated bed-places	Estimated holiday dwelling	Per bed-places	Per Holiday dwelling	Per Holiday dwelling at weekend	
San Bartolomé de Tirajana	4,168	56,710	22,471	501,987	8.61	30,951	9,738	54.27	80.44	81.35	2,270
Arona	3,530	39,971	28,056	338,827	8.43	19,945	6,307	59.17	78.22	79.59	1,670
Mogán	3,060	32,732	18,049	309,505	9.15	17,233	4,963	61.01	87.89	88.55	1,212
Tías	3,080	32,588	17,706	271,873	8.12	16,412	5,094	56.33	80.05	81.44	1,166
Adeje	1,334	27,870	8,444	234,053	8.30	14,423	4,077	53.47	80.84	80.92	967
Benidorm	5,772	17,962	20,691	128,133	6.27	20,116	4,872	23.87	46.49	51.21	612
Madrid	20,889	15,357	71,946	67,459	3.85	9,416	3,701	47.63	63.28	71.91	583
Teguiise	2,995	15,656	17,615	111,673	6.93	8,282	2,462	50.17	76.87	79.40	616
Puerto de la Cruz	3,516	10,058	13,145	96,575	8.08	5,416	2,130	65.04	82.22	85.25	487
La Oliva	1,353	9,535	5,563	65,222	6.50	5,158	1,437	44.27	73.10	76.92	367

6. Travellers and overnight stays by countries of residence

Countries	Travellers		Overnight stays	
	Total	%	Total	%
TOTAL	704,313	100.00	4,102,234	100.00
Residents in Spain	275,875	39.17	944,795	23.03
Residents abroad	428,437	60.83	3,157,439	76.97
Total residents abroad	428,437	100.00	3,157,439	100.00
Total residents in E.U (excluding Spain)	349,048	81.47	2,644,824	83.76
- Germany	43,836	10.23	436,280	13.82
- Austria	2,387	0.56	19,179	0.61
- Belgium	7,691	1.80	47,130	1.49
-Denmark	13,211	3.08	103,544	3.28
- Finland	21,569	5.03	188,976	5.99
- France	19,533	4.56	87,693	2.78
- Greece	410	0.10	2,029	0.06
- Ireland	15,478	3.61	110,722	3.51
- Italy	21,033	4.91	98,654	3.12
- Luxembourg	438	0.10	3,272	0.10
- Netherlands	20,407	4.76	160,684	5.09
- Poland	5,242	1.22	29,117	0.92
- Portugal	4,213	0.98	15,154	0.48
- United Kingdom	130,872	30.55	991,597	31.41
- Czech Republic	1,957	0.46	17,191	0.54
- Sweden	34,523	8.06	295,178	9.35
- Other EU countries	6,248	1.46	38,422	1.22
Norway	23,252	5.43	230,056	7.29
Russia	4,909	1.15	30,615	0.97
Switzerland	4,035	0.94	29,449	0.93
Other european countries	5,031	1.17	33,222	1.05
United States of America	9,393	2.19	36,564	1.16
Rest of America	9,627	2.25	53,812	1.70
African countries	4,789	1.12	19,172	0.61
Other countries	18,352	4.28	79,724	2.52

**Tourist Accommodation Occupancy Survey
Campsite Occupancy Survey (COS)**

December 2018

Provisional data

31st January 2019

1. Travellers, overnight stays and average stay by category of establishment

Category	Travellers			Overnight stays			Average stay
	Total	Residents in Spain	Residents abroad	Total	Residents in Spain	Residents abroad	
TOTAL	174,601	123,219	51,383	1,190,642	377,802	812,840	6.82
Luxury and first-class	74,470	51,230	23,240	503,149	173,868	329,281	6.76
Second-class	85,172	60,422	24,751	626,350	175,478	450,872	7.35
Third-class	14,960	11,567	3,392	61,143	28,456	32,687	4.09
Annual rate	7.37	4.28	15.57	5.47	-0.36	8.42	-1.77
Cumulative annual rate	0.18	-0.47	1.43	2.04	1.22	2.91	1.86

2. Open establishments, capacity, occupancy and number of staff by category of establishments

Category	Estimated open establishments	Capacity		Occupied pitches	Occupancy rate per pitch	Weekend occupancy rate	Employed personnel
		Estimated bedplaces	Estimated pitches				
TOTAL	446	271,970	86,343	991,828	37.06	37.74	3,080
Luxury and first-class	116	117,852	36,222	385,305	34.31	35.60	1,408
Second-class	260	135,942	43,967	540,180	39.63	39.55	1,444
Third-class	70	18,175	6,154	66,342	34.77	36.97	229
Annual rate	-0.34	2.08	1.85	2.47	0.61	0.51	3.03
Cumulative annual rate	0.00	1.18	0.70	1.46	0.72	-0.19	3.75

3. Travellers, overnight stays and average stay by Autonomous Cities and Communities

Autonomous cities and communities	Travellers			Overnight stays			Average stay
	Total	Residents in Spain	Residents abroad	Total	Residents in Spain	Residents abroad	
TOTAL	174,601	123,219	51,383	1,190,642	377,802	812,840	6.82
Andalucía	28,715	15,785	12,931	206,873	52,652	154,221	7.20
Aragón	8,923	7,444	1,479	23,519	19,986	3,533	2.64
Asturias, Principado de	719	-	-	1,936	-	-	2.69
Balears, Illes	-	-	-	-	-	-	-
Canarias	2,096	1,320	776	9,409	3,003	6,406	4.49
Cantabria	350	315	35	632	559	73	1.81
Castilla y León	3,266	1,640	1,626	5,790	3,570	2,219	1.77
Castilla - La Mancha	1,852	1,579	273	4,429	3,852	578	2.39
Cataluña	54,347	45,482	8,865	150,152	109,610	40,542	2.76
Comunitat Valenciana	42,806	23,708	19,098	603,889	102,973	500,916	14.11
Extremadura	2,352	1,840	512	5,811	4,849	962	2.47
Galicia	199	62	137	414	139	275	2.08
Madrid, Comunidad de	12,570	11,643	927	42,643	40,795	1,848	3.39
Murcia, Región de	5,854	3,242	2,613	111,253	13,433	97,820	19.00
Navarra, Comunidad Foral de	1,620	-	-	7,062	-	-	4.36
País Vasco	2,524	1,441	1,083	6,933	4,192	2,740	2.75
Rioja, La	6,409	-	-	9,898	-	-	1.54
Ceuta	-	-	-	-	-	-	-
Melilla	-	-	-	-	-	-	-

4. Open establishments, capacity, occupancy and number of staff by autonomous cities and communities

Autonomous cities and communities	Estimated open establishments	Capacity		Occupied pitches	Occupancy rate per pitch	Weekend occupancy rate	Employed personnel
		Estimated bedplaces	Estimated pitches				
TOTAL	446	271,970	86,343	991,828	37.06	37.74	3,080
Andalucía	97	59,428	19,033	148,051	25.09	27.07	676
Aragón	43	16,591	5,059	37,082	23.65	24.02	175
Asturias, Principado de	3	2,724	786	2,937	12.05	6.48	18
Balears, Illes	-	-	-	-	-	-	-
Canarias	5	3,574	1,460	7,818	17.28	18.12	21
Cantabria	4	2,022	609	6,619	35.08	38.07	8
Castilla y León	21	7,747	2,393	11,049	14.90	14.68	54
Castilla - La Mancha	11	3,678	1,166	8,741	24.18	19.97	42
Cataluña	81	53,578	16,825	172,270	33.03	36.20	616
Comunitat Valenciana	104	69,081	21,337	380,564	57.53	59.44	908
Extremadura	8	2,913	1,040	8,491	26.35	25.98	48
Galicia	14	4,676	1,569	4,035	8.29	9.68	43
Madrid, Comunidad de	18	16,715	5,745	77,038	43.26	43.60	188
Murcia, Región de	17	14,859	4,879	71,297	47.14	49.20	183
Navarra, Comunidad Foral de	7	5,040	1,486	16,270	35.31	40.48	37
País Vasco	8	4,773	1,514	8,336	17.76	14.59	33
Rioja, La	4	4,570	1,443	31,230	69.83	50.75	30
Ceuta	-	-	-	-	-	-	-
Melilla	-	-	-	-	-	-	-

5. Travellers and overnight stays, average stay, capacity, occupancy and number of staff by provinces with the greatest number of overnight stays¹

Provinces	Travellers		Overnight stays		Average stay	Estimated open establishments	Estimated pitches	Occupancy rate per pitch	Employed personnel
	Residents in Spain	Residents abroad	Residents in Spain	Residents abroad					
	Spain		Spain						
Alicante\Alacant	6,969	9,733	42,425	359,579	24.07	45	10,330	72.48	442
Castellón\Castelló	5,554	6,475	25,977	103,260	10.74	35	6,307	39.90	255
Málaga	3,584	3,640	20,359	80,717	13.99	28	4,691	42.01	212
Valencia\València	11,184	2,890	34,571	38,077	5.16	24	4,700	48.36	210
Girona	16,459	4,427	39,625	19,099	2.81	31	5,430	31.12	230
Barcelona	14,329	3,199	34,949	18,683	3.06	18	5,860	31.74	199
Almería	1,669	2,511	8,617	31,497	9.60	17	2,584	33.29	105
Granada	2,736	2,003	7,738	16,068	5.02	19	2,583	23.64	101
Lleida	8,641	202	21,054	491	2.44	19	3,179	44.64	72
Cádiz	1,432	2,648	2,823	17,701	5.03	12	2,979	16.99	123
Tarragona	6,053	1,037	13,983	2,268	2.29	12	2,355	24.96	115
Huesca	5,388	380	13,407	1,350	2.56	25	3,594	27.96	122
Huelva	3,731	891	7,333	5,430	2.76	8	3,976	12.85	72
Teruel	1,900	93	4,692	358	2.53	12	910	9.71	31
Gipuzkoa	1,138	1,057	2,521	2,191	2.15	6	1,284	13.73	27

¹ Provinces belonging to uniprovincial Autonomous Communities have not been included because they are reflected in previous tables.

6. Travellers, overnight stays, average stay, open establishments, capacity, occupancy and number of staff from tourist areas with the greatest number of overnight stays

Tourist areas	Travellers		Overnight stays		Average stay	Estimated open establishments	Estimated pitches	Occupancy rate per pitch	Employed personnel
	Residents in Spain	Residents abroad	Residents in Spain	Residents abroad					
	Costa Blanca	4,221	6,946	21,158					
Costa de Castellón	4,518	6,252	20,951	101,151	11.34	29	5,748	40.73	232
Costa del Sol	1,718	3,154	16,239	79,104	19.57	14	3,468	50.52	160
Costa Cálida	1,421	1,947	5,472	89,795	28.29	9	3,824	50.40	149
Costa Valencia	6,312	1,689	23,279	33,932	7.15	11	3,169	52.12	139
Pirineus	22,535	229	51,868	618	2.31	38	6,037	45.24	189
Costa Barcelona	6,337	3,181	18,587	18,562	3.90	7	4,171	27.36	136
Costa de Almería	1,345	2,404	7,818	28,754	9.75	14	2,254	32.81	88
Costa Brava	7,687	4,403	17,358	19,021	3.01	17	3,401	23.25	158
Costa de la Luz (Cádiz)	757	2,457	1,636	17,303	5.89	9	2,413	17.92	105
Pirineo Aragonés	5,294	380	13,254	1,350	2.57	22	3,381	26.11	119
Costa Tropical	573	758	2,599	11,868	10.87	6	1,198	28.84	36
Costa de la Luz (Huelva)	3,450	822	6,865	5,218	2.83	6	3,855	12.34	67
Costa Daurada	5,060	216	10,339	471	2.05	6	1,384	34.02	61
pn Sierra Nevada	1,474	622	3,815	2,917	3.21	8	763	19.44	37

7. Travellers, overnight stays, average stay, open establishments, capacity, occupancy and number of staff from tourist sites with the greatest number at overnights stays

Tourist sites	Travellers		Overnight stays		Average stay	Estimated open establishments	Estimated pitches	Occupancy rate per pitch	Employed personnel
	Residents in Spain	Residents abroad	Residents in Spain	Residents abroad					
	Benidorm	927	2,005	6,507					
Cartagena	781	682	3,580	57,355	31.00	3	2,555	39.81	89
Marbella	1,043	1,284	11,726	30,628	18.20	3	1,313	49.68	66
Oliva	787	936	6,971	25,351	18.76	5	1,267	44.69	114
Cabanes	126	2,270	181	31,310	13.14	4	1,215	44.46	53
Mazarrón	194	953	1,053	27,597	24.98	3	882	76.43	41
Vélez-Málaga	143	883	854	24,843	25.05	4	839	59.58	55
Calp	177	877	972	23,797	23.50	5	463	88.54	24
Peñíscola/Peñíscola	1,296	1,671	3,003	20,983	8.08	8	1,340	29.23	44
Benicasim/Benicàssim	659	1,031	3,355	20,281	13.99	4	872	48.86	48
Villajoyosa/Vila Joiosa, la Campello, el	189	736	1,714	14,410	17.43	3	387	71.47	16
Campello, el	682	597	4,053	10,102	11.07	5	382	72.81	32

8. Travellers and overnight stays by countries of residence

Countries	Travellers		Overnight stays	
	Total	%	Total	%
TOTAL	174,601	100.00	1,190,642	100.00
Residents in Spain	123,219	70.57	377,802	31.73
Residents abroad	51,383	29.43	812,840	68.27
TOTAL residents abroad	51,383	100.00	812,840	100.00
TOTAL residents in EU (excluding Spain)	47,494	92.43	776,131	95.48
- Germany	15,067	29.32	210,623	25.91
- Austria	374	0.73	6,552	0.81
- Belgium	2,051	3.99	37,181	4.57
- Denmark	223	0.43	6,117	0.75
- Finland	566	1.10	11,941	1.47
- France	8,250	16.06	57,237	7.04
- Greece ¹	-	-	-	-
- Ireland	431	0.84	5,526	0.68
- Italy	1,991	3.87	8,371	1.03
- Luxembourg	163	0.32	2,329	0.29
- Netherlands	5,965	11.61	103,836	12.77
- Poland ¹	-	-	-	-
- Portugal	871	1.70	2,380	0.29
- United Kingdom	9,689	18.86	289,786	35.65
- Czech Republic	225	0.44	696	0.09
- Sweden	842	1.64	27,308	3.36
- Other EU countries	442	0.86	5,365	0.66
Norway	274	0.53	8,529	1.05
Russia	75	0.15	251	0.03
Switzerland	2,074	4.04	19,781	2.43
Other European countries	334	0.65	1,391	0.17
United States of America	105	0.20	747	0.09
Rest of America	438	0.85	1,398	0.17
African countries	60	0.12	352	0.04
Other countries	529	1.03	4,258	0.52

¹ Non-significant data

COS (TABLES ANNEX) - December 2018. Provisional data (4/4)

**Tourist accommodation occupancy survey
(Rural tourist accommodation)**

December 2018

Provisional data

31st January 2019

1. Number of travellers, overnight stays and average stay by Autonomous City and Community

Autonomous Communities	Number of travellers			Number of overnight stays			Average stay
	Total	Residents In Spain	Residents abroad	Total	Residents In Spain	Residents abroad	
TOTAL	332,325	307,983	24,342	864,792	779,027	85,765	2.60
Andalucía	30,964	27,761	3,203	85,026	72,036	12,990	2.75
Aragón	19,082	18,461	621	57,783	55,800	1,983	3.03
Asturias, Principado de	17,108	16,707	402	45,596	44,421	1,174	2.67
Balears, Illes	7,032	2,931	4,101	17,877	5,477	12,400	2.54
Canarias	8,015	2,357	5,658	39,000	7,094	31,905	4.87
Cantabria	11,236	10,715	520	25,624	24,533	1,092	2.28
Castilla y León	70,269	68,223	2,046	178,141	173,611	4,530	2.54
Castilla-La Mancha	31,913	30,896	1,018	78,204	75,261	2,944	2.45
Cataluña	47,948	46,864	1,084	122,587	120,048	2,539	2.56
Comunitat Valenciana	17,038	16,223	814	42,961	39,765	3,197	2.52
Extremadura	16,258	15,151	1,108	39,607	37,048	2,559	2.44
Galicia	9,365	8,433	931	17,512	15,444	2,067	1.87
Madrid, Comunidad de	16,734	15,770	964	31,541	29,735	1,806	1.88
Murcia, Región de	4,513	4,098	416	12,655	11,373	1,282	2.80
Navarra, Comunidad Foral de	11,759	11,316	444	35,833	34,681	1,152	3.05
País Vasco	10,062	9,076	986	25,731	23,669	2,062	2.56
Rioja, La	3,028	3,001	27	9,114	9,030	83	3.01
Ceuta	-	-	-	-	-	-	-
Melilla	-	-	-	-	-	-	-
Annual rate	0.54	-0.14	10.02	-0.18	-0.53	3.11	-0.72
Cumulative annual rate	4.96	3.45	11.25	3.39	1.34	8.99	-1.49

2. Open rural establishments, bed-places, occupancy rates and employed personnel by Autonomous City and Community

Autonomous Communities	Estimated open rural establishments	Estimated bed-places	Occupancy rate			Employed personnel
			Of bed-places	Of bed-places at weekend	Of bedrooms	
TOTAL	15,993	151,054	18.37	31.45	21.91	22,327
Andalucía	2,167	18,504	14.77	24.89	18.02	3,183
Aragón	1,153	9,030	20.39	32.04	21.92	1,331
Asturias, Principado de	1,208	11,901	12.33	19.21	14.71	1,599
Balears, Illes	156	2,836	20.19	26.30	25.39	535
Canarias	537	3,410	36.71	38.83	53.60	796
Cantabria	353	5,390	15.31	29.56	18.00	544
Castilla y León	3,514	30,385	18.84	35.12	21.93	4,839
Castilla-La Mancha	1,671	14,563	17.24	33.71	19.84	2,100
Cataluña	1,936	17,211	22.85	40.54	26.00	2,605
Comunitat Valenciana	816	9,937	13.91	23.37	19.31	1,158
Extremadura	580	7,116	17.93	31.55	23.90	836
Galicia	413	5,198	10.81	19.21	12.66	698
Madrid, Comunidad de	238	3,745	26.99	47.86	35.57	558
Murcia, Región de	154	2,325	17.49	29.53	21.59	246
Navarra, Comunidad Foral de	639	4,583	24.96	39.60	26.68	757
País Vasco	346	3,831	21.42	31.96	24.54	422
Rioja, La	113	1,088	26.61	38.73	26.42	120
Ceuta	-	-	-	-	-	-
Melilla	-	-	-	-	-	-
Annual rate	1.81	3.02	-3.12	-3.20	-3.24	3.87
Cumulative annual rate	1.54	2.74	0.63	-1.10	0.27	4.52

3. Number of travellers, overnight stays and average stay in Provinces with the greatest number of overnight stays¹

Provinces	Number of travellers			Number of overnight stays			Average stay
	Total	Residents In Spain	Residents abroad	Total	Residents In Spain	Residents abroad	
Girona	18,135	17,743	392	48,816	48,313	503	2.69
Ávila	15,382	14,873	509	38,188	36,956	1,232	2.48
Barcelona	15,309	15,200	108	37,707	37,384	323	2.46
Huesca	10,611	10,256	355	33,959	32,862	1,097	3.20
Cáceres	13,280	12,323	957	32,941	30,761	2,180	2.48
Segovia	13,103	12,926	177	31,886	31,272	614	2.43
Santa Cruz de Tenerife	5,740	1,574	4,166	29,850	5,035	24,814	5.20
Málaga	8,075	6,985	1,090	27,788	20,768	7,020	3.44
Lleida	9,942	9,550	392	24,435	23,459	977	2.46
Soria	7,977	7,895	82	23,207	23,004	203	2.91
Albacete	8,471	8,452	20	21,383	21,309	73	2.52
Burgos	7,595	7,489	106	20,450	20,292	159	2.69
Salamanca	8,357	7,923	434	19,910	19,070	840	2.38
Guadalajara	6,772	6,411	362	16,693	15,957	736	2.46
Cuenca	6,633	6,236	396	16,351	15,416	935	2.47

¹ Provinces belonging to uniprovincial Autonomous Communities have not been included because they are reflected in previous tables.

4. Open rural establishments, bed-places, occupancy rates and employed personnel in Provinces with the highest number of overnight stays¹

Provinces	Estimated open rural establishments	Estimated bed-places	Occupancy rate			Employed personnel
			Of bed-places	Of bed-places at weekend	Of bedrooms	
Girona	617	6,271	24.98	44.17	27.86	724
Ávila	799	6,238	19.64	33.10	21.31	1,030
Barcelona	540	4,653	25.93	44.33	29.87	915
Huesca	640	4,907	22.06	33.25	23.91	761
Cáceres	475	5,828	18.21	31.20	24.58	661
Segovia	460	4,188	24.44	47.25	28.50	629
Santa Cruz de Tenerife	435	2,606	36.76	38.50	54.90	619
Málaga	1,148	8,019	11.16	19.06	13.66	1,590
Lleida	544	4,110	19.12	35.08	22.52	680
Soria	323	3,095	24.01	43.35	25.87	398
Albacete	678	4,408	15.60	29.03	17.53	812
Burgos	374	3,607	18.28	39.48	21.30	455
Salamanca	517	4,263	15.03	27.19	20.22	647
Guadalajara	236	2,610	20.50	37.60	23.25	335
Cuenca	336	3,285	15.99	33.36	18.65	408

¹ Provinces belonging to uniprovincial Autonomous Communities have not been included because they are reflected in previous tables.

5. Number of travellers, overnight stays, average stay, capacity and occupancy rates in areas with the highest number of overnight stays

Areas	Number of travellers		Number of overnight stays			Capacity		Occupancy rate		
	Residents In Spain	Residents abroad	Residents In Spain	Residents abroad	Average stay	Estimated open rural establish.	Estimated bed-places	Of bed-places	Of bed-places at weekend	Of bedrooms
Pirineus	17,918	317	48,806	827	2.72	772	6,503	24.42	40.91	27.52
Costa Brava	10,334	375	28,906	477	2.74	385	3,918	24.14	42.56	27.17
Pirineo Navarro	8,970	291	28,288	712	3.13	545	3,773	24.55	38.89	26.43
Pirineo Aragonés	9,156	325	27,595	923	3.01	600	4,638	19.67	31.23	22.17
Extremadura Norte	8,594	301	22,557	974	2.65	323	4,000	18.97	30.90	24.99
Parque Nacional Sierra de Guadarrama	9,374	647	15,731	1,204	1.69	122	1,712	31.68	59.85	36.26
Isla de Tenerife	1,154	2,781	2,393	13,187	3.96	110	1,228	40.78	44.13	54.13
Isla de Mallorca	2,156	3,660	3,997	11,364	2.64	136	2,481	19.80	25.93	25.51
Costa Verde	6,091	68	14,327	120	2.35	443	4,693	9.92	14.87	12.46
P.Natural de Corona Forestal	988	2,447	1,777	10,949	3.71	78	916	44.58	47.65	56.81
P.Nacional Teide	839	1,997	1,580	9,538	3.92	70	847	42.20	46.18	55.35
Isla de La Palma	288	950	1,703	9,197	8.81	232	888	39.28	38.71	65.76
P.Nacional Picos de Europa	3,826	281	9,837	1,015	2.64	255	2,234	15.65	20.96	17.36
Pirineo Vasco	3,234	175	8,874	278	2.68	108	1,216	23.94	36.85	27.79
P.Natural Sierra de Grazalema	2,269	189	7,601	511	3.30	140	1,153	22.65	30.40	27.12

6. Number of travellers, overnight stays, average stay, capacity, occupancy rates and employed personnel per rural house by Autonomous City and Community²

Autonomous Communities	Number of travellers		Number of overnight stays			Capacity		Occupancy rate		Employed personnel
	Residents In Spain	Residents abroad	Residents In Spain	Residents abroad	Average stay	Estimated open rural establish.	Estimated bed-places	Of bed-places	Of bed-places at weekend	
TOTAL	234,538	15,757	626,063	60,310	2.74	14,026	116,582	18.89	32.28	18,206
Andalucía	27,618	3,070	71,656	12,654	2.75	2,164	18,350	14.77	24.87	3,166
Aragón	15,018	526	45,691	1,756	3.05	931	7,138	21.15	32.57	1,081
Asturias, Principado de	7,479	144	18,852	216	2.50	759	5,021	12.23	16.54	889
Balears, Illes	1,799	2,784	3,431	7,776	2.45	79	1,246	28.69	37.33	213
Canarias	807	3,100	4,028	21,765	6.60	507	2,556	32.35	32.56	624
Cantabria	5,145	155	13,471	474	2.63	212	2,786	16.13	27.36	269
Castilla y León	48,960	958	139,131	2,579	2.84	3,170	23,244	19.59	36.34	3,884
Castilla-La Mancha	30,069	1,011	73,467	2,936	2.46	1,642	13,848	17.71	34.58	2,061
Cataluña	46,864	1,084	120,048	2,539	2.56	1,936	17,211	22.85	40.54	2,605
Comunitat Valenciana	11,804	645	31,125	2,219	2.68	764	6,949	15.43	25.02	992
Extremadura	8,018	293	19,394	530	2.40	366	3,647	17.59	34.99	507
Galicia	6,014	701	11,015	1,591	1.88	314	3,788	10.68	19.51	489
Madrid, Comunidad de	2,626	45	8,296	93	3.14	88	970	27.78	42.26	102
Murcia, Región de	3,133	270	9,880	1,073	3.22	143	2,014	17.47	29.65	207
Navarra, Comunidad Foral de	11,297	443	34,621	1,151	3.05	637	4,569	24.99	39.66	751
País Vasco	4,887	503	12,927	874	2.56	200	2,158	20.38	30.11	245
Rioja, La	3,001	27	9,030	83	3.01	113	1,088	26.61	38.73	120
Ceuta	-	-	-	-	-	-	-	-	-	-
Melilla	-	-	-	-	-	-	-	-	-	-

² To facilitate the comparability between data from different Autonomous Communities (and because of the different regulation and different characteristics),

a group called rural house has been created, with those establishments with similar typology (location, capacity, etc...).

The variables included in the previous table have been estimated with that type of establishments.

7. Travellers and overnight stays by country of residence

Results by countries	Travellers		Overnight stays	
	Total	%	Total	%
TOTAL	332,325	100.00	864,792	100.00
Residents in Spain	307,983	92.68	779,027	90.08
Residents abroad	24,342	7.32	85,765	9.92
Total Residents abroad	24,342	100.00	85,765	100.00
Total Residents in EU (excluding Spain)	16,979	69.75	67,060	78.19
- Germany	4,477	18.39	24,102	28.10
- Belgium	614	2.52	3,335	3.89
- France	3,373	13.86	9,391	10.95
- Italy	566	2.33	1,769	2.06
- Netherlands	1,837	7.55	7,338	8.56
- Portugal	989	4.06	2,313	2.70
- United Kingdom	2,788	11.45	10,717	12.50
Switzerland	493	2.03	1,853	2.16
Other European countries	3,340	13.72	11,296	13.17
United States of America	612	2.51	1,755	2.05
Other countries	5,254	21.58	11,895	13.87

**Tourist Accommodation Occupancy Survey
Hostels Occupancy Survey (HOS)**

December 2018

Provisional data

31st January 2019

1. Travellers, overnight stays and average stay by Autonomous Cities and Communities

Autonomous cities and communities	Travellers			Overnight stays			Average stay
	Total	Residents in Spain	Residents abroad	Total	Residents in Spain	Residents abroad	
TOTAL	47,344	33,820	13,524	139,651	98,479	41,172	2.95
Andalucía	8,236	7,664	572	31,252	29,862	1,390	3.79
Aragón	2,258	2,239	19	6,457	6,428	29	2.86
Asturias, Principado de	210	209	1	506	497	8	2.41
Balears, Illes	-	-	-	-	-	-	-
Canarias	4,052	1,102	2,950	12,411	3,190	9,221	3.06
Cantabria	746	746	0	1,176	1,176	0	1.58
Castilla y León	2,937	2,827	110	7,166	6,820	346	2.44
Castilla - La Mancha	2,189	2,115	74	5,773	5,685	88	2.64
Cataluña	13,245	8,396	4,849	40,206	25,071	15,134	3.04
Comunitat Valenciana	4,241	2,480	1,761	13,142	6,802	6,340	3.10
Extremadura	380	363	17	894	873	21	2.35
Galicia	-	-	-	-	-	-	-
Madrid, Comunidad de	4,208	1,567	2,641	9,824	3,083	6,741	2.33
Murcia, Región de	-	-	-	-	-	-	-
Navarra, Comunidad Foral de	746	719	27	1,809	1,761	48	2.42
País Vasco	2,968	2,482	486	6,412	4,791	1,621	2.16
Rioja, La	515	512	3	1,268	1,265	3	2.46
Ceuta	-	-	-	-	-	-	-
Melilla	-	-	-	-	-	-	-
Annual rate	-12.08	-9.96	-16.99	2.72	4.11	-0.47	16.84
Cumulative annual rate	5.43	8.96	-1.40	6.71	10.93	-1.98	1.21

2. Open establishments, capacity, occupancy and number of staff by autonomous cities and communities

Autonomous cities and communities	Capacity		Occupancy rate		Employed personnel
	Estimated open establishments	Estimated bed-places	Of bed-places	Of bed-places at weekend	
TOTAL	205	20,632	21.83	28.76	1,535
Andalucía	12	2,743	36.76	42.98	219
Aragón	19	1,699	12.26	22.12	89
Asturias, Principado de	4	321	5.08	7.23	42
Balears, Illes	-	-	-	-	-
Canarias	29	681	58.78	64.90	79
Cantabria	6	406	9.33	16.27	27
Castilla y León	20	1,905	12.13	22.27	158
Castilla - La Mancha	21	2,386	7.80	9.41	80
Cataluña	31	4,179	31.04	40.47	311
Comunitat Valenciana	10	1,773	23.91	30.51	84
Extremadura	10	745	3.87	8.62	36
Galicia	-	-	-	-	-
Madrid, Comunidad de	5	596	53.20	68.03	185
Murcia, Región de	-	-	-	-	-
Navarra, Comunidad Foral de	8	542	10.76	14.90	66
País Vasco	15	1,626	12.72	17.52	114
Rioja, La	6	271	15.09	25.25	12
Ceuta	-	-	-	-	-
Melilla	-	-	-	-	-
Annual rate	-0.59	-4.42	7.47	12.05	-3.63
Cumulative annual rate	8.62	2.26	4.38	2.19	0.05

3. Travellers and overnight stays by countries of residence

Countries	Travellers		Overnight stays		Average stay
	Total	%	Total	%	
TOTAL	47,344	100.00	139,651	100.00	2.95
Residents in Spain	33,820	71.43	98,479	70.52	2.91
Residents abroad	13,524	28.57	41,172	29.48	3.04
TOTAL residents abroad	13,524	100.00	41,172	100.00	3.04
TOTAL residents in E.U. (excluding Spain)	7,152	52.88	18,323	44.50	2.56
- Germany	1,376	10.18	3,592	8.72	2.61
- Belgium	194	1.44	465	1.13	2.39
- France	1,428	10.56	3,137	7.62	2.20
- Italy	1,312	9.70	3,689	8.96	2.81
- Netherlands	281	2.07	822	2.00	2.93
- Portugal	201	1.48	452	1.10	2.25
- United Kingdom	1,275	9.43	3,512	8.53	2.76
Switzerland	112	0.83	403	0.98	3.60
Other European countries	2,446	18.09	6,205	15.07	2.54
United States of America	1,127	8.33	3,018	7.33	2.68
Other countries	3,773	27.90	15,876	38.56	4.21

HOLIDAY DWELLING PRICE INDEX (HDPI)

December 2018

Provisional data

31st January 2019

National general index and breakdown by rates

	Index	Annual variation rate
TOTAL	136.70	2.92
Normal	133.15	3.64
Weekend	122.02	-0.65
Tour-operators and travel agencies	141.77	2.94

National general index and breakdown by modalities

	Index	Annual variation rate
TOTAL	136.70	2.92
Studio	137.06	1.68
Dwellings 2/4 bedplaces	136.84	3.22
Dwellings 4/6 bedplaces	138.03	2.64

Tourist Campsite Price Index (TCSPI). 2002 Base

December 2018

Provisional data

31st January 2019

National general index and breakdown by rates

	Index	Annual variation rate
TOTAL	139.14	2.90
Normal rate	139.36	4.72
Special rate for stays up to one month	134.67	-1.80
Special rate for stays longer than one month	147.89	2.04
Bungalow rate ¹	99.01	2.68

¹2014 Base

National general index and breakdown by categories

	Index	Annual variation rate
TOTAL	139.14	2.90
Luxury and first	139.06	4.94
Second	137.24	1.24
Third	180.85	2.04

TCSPI (ANNEX OF TABLES) - December 2018. Provisional data

Rural Tourism Accommodation Price Index (RTAPI)

December 2018

Provisional data

31st January 2019

General Autonomous Cities and Communities and national indices

	Index	Annual variation rate
TOTAL	140.27	1.94
Andalucía	137.66	1.08
Aragón	168.15	-0.44
Asturias, Principado de	136.72	1.86
Balears, Illes	93.78	-7.97
Canarias	108.39	-1.33
Cantabria	156.35	3.10
Castilla y León	140.82	2.76
Castilla - La Mancha	140.73	1.66
Cataluña	136.19	2.29
Comunitat Valenciana	157.89	5.95
Extremadura	105.32	-3.27
Galicia	139.33	2.27
Madrid, Comunidad de	147.54	7.15
Murcia, Región de	134.13	4.92
Navarra, Comunidad Foral de	202.03	5.98
País Vasco	143.13	-1.20
Rioja, La	138.76	4.92
Ceuta	-	-
Melilla	-	-

National general index and breakdown by rates

	Index	Annual variation rate
TOTAL	140.27	1.94
Normal	139.36	1.51
Weekend	142.99	2.21

National general index and breakdown by rent modality

	Index	Annual variation rate
TOTAL	140.27	1.94
Shared use (in case of per room rent modality)	122.05	0.66
Full use (rent of entire dwelling)	145.41	2.14

Tourist Accommodation Occupancy Survey (Holiday Dwellings)

Year 2018

Provisional data

31st January 2019

1. Travellers, overnight stays and average stay by Autonomous Cities and Communities

Autonomous Cities and Communities	Travellers			Overnight stays			Average stay
	Total	Residents in Spain	Residents abroad	Total	Residents in Spain	Residents abroad	
TOTAL	12,277,366	4,538,970	7,738,397	73,428,512	19,007,005	54,421,507	5.98
Andalucía	2,467,372	1,111,416	1,355,956	10,432,737	3,641,368	6,791,370	4.23
Aragón	196,058	170,479	25,579	610,763	511,082	99,681	3.12
Asturias, Principado de	69,022	62,569	6,454	261,567	242,151	19,417	3.79
Balears, Illes	1,470,862	216,652	1,254,210	9,567,601	971,170	8,596,430	6.50
Canarias	3,744,448	635,592	3,108,856	30,267,029	3,144,709	27,122,320	8.08
Cantabria	215,283	188,021	27,262	692,070	599,518	92,552	3.21
Castilla y León	197,135	167,194	29,941	470,755	403,600	67,155	2.39
Castilla - La Mancha	112,115	104,666	7,448	366,291	321,213	45,078	3.27
Cataluña	1,044,921	425,970	618,950	6,037,303	2,217,255	3,820,048	5.78
Comunitat Valenciana	1,666,095	790,851	875,244	10,598,652	4,506,895	6,091,757	6.36
Extremadura	88,906	77,546	11,361	171,014	150,961	20,053	1.92
Galicia	130,913	103,307	27,606	430,042	362,548	67,494	3.28
Madrid, Comunidad de	509,575	240,792	268,783	1,795,611	800,210	995,401	3.52
Murcia, Región de	121,640	84,773	36,867	860,308	574,952	285,356	7.07
Navarra, Comunidad Foral de	81,020	57,795	23,225	267,804	189,845	77,959	3.31
País Vasco	123,106	66,077	57,029	493,925	272,402	221,523	4.01
Rioja, La	38,897	35,271	3,626	105,037	97,124	7,913	2.70
Ceuta	-	-	-	-	-	-	-
Melilla	-	-	-	-	-	-	-
Annual rate	-3.04	-0.26	-4.60	-6.04	-2.94	-7.08	-3.10

2. Capacity, occupancy and number of staff by Autonomous Cities and Communities

Autonomous Cities and Communities	Capacity ¹		Level of occupancy ²				Employed personnel ¹
	Estimated bedplaces	Estimated Holiday dwelling	Per bedplaces	Per bedplaces at weekend	Per Holiday dwelling	Per Holiday dwelling at weekend	
TOTAL	510,462	133,356	38.97	41.88	59.01	62.27	28,593
Andalucía	76,133	19,310	37.23	42.00	54.43	60.11	4,607
Aragón	8,225	1,903	20.19	30.26	28.46	39.13	559
Asturias, Principado de	4,294	1,123	16.45	21.52	21.22	27.33	299
Balears, Illes	41,790	13,537	60.71	61.42	73.45	74.10	3,539
Canarias	149,274	45,730	55.06	56.21	77.67	78.95	11,411
Cantabria	5,781	1,483	32.46	41.91	45.17	56.93	425
Castilla y León	6,192	1,400	20.67	33.30	30.60	44.13	540
Castilla - La Mancha	5,547	1,347	18.01	29.48	27.67	40.22	423
Cataluña	52,568	11,531	31.21	34.43	47.60	51.42	1,578
Comunitat Valenciana	127,184	26,745	22.68	24.69	37.37	40.33	3,014
Extremadura	1,908	456	24.38	35.48	35.50	48.16	184
Galicia	4,371	1,132	26.62	31.46	39.63	45.20	300
Madrid, Comunidad de	9,813	3,732	49.94	55.35	69.93	74.32	592
Murcia, Región de	9,310	2,092	25.20	27.54	41.95	45.42	277
Navarra, Comunidad Foral de	2,460	465	29.60	39.45	46.93	56.39	502
País Vasco	4,044	1,030	33.15	40.42	53.84	61.32	238
Rioja, La	1,569	339	18.28	33.21	29.30	48.53	107
Ceuta	-	-	-	-	-	-	-
Melilla	-	-	-	-	-	-	-
Annual rate	-1.42	-0.67	-4.63	-4.43	-4.37	-4.12	0.27

¹ Annual average.

² Occupancy rate is weighted by number of bedplaces or by number of apartments

3. Travellers, overnight stays, capacity, occupancy, total number of staff with greater number of overnight stays¹

Provinces	Travellers		Overnight stays		Average stay	Capacity ²		Level of occupancy ³			Employed personnel ²
	Residents in Spain	Residents abroad	Residents in Spain	Residents abroad		Estimated bed-places	Estimated holiday dwelling	Per bed-places	Per Holiday dwelling	Per Holiday dwelling at weekend	
Palmas, Las	370,925	2,006,164	1,834,870	17,731,110	8.23	95,907	29,229	55.33	79.43	80.67	7,145
Santa Cruz de Tenerife	264,667	1,102,691	1,309,840	9,391,210	7.83	53,367	16,502	54.55	74.54	75.89	4,266
Alicante/Alacant	358,098	659,880	2,095,773	4,904,691	6.88	85,869	18,617	22.22	36.81	39.32	2,143
Málaga	336,729	893,203	1,142,723	5,378,465	5.30	43,246	10,865	41.03	61.76	64.78	2,741
Girona	152,217	212,798	672,682	1,492,869	5.93	26,437	5,254	22.18	33.71	37.07	536
Valencia/València	195,186	167,958	1,137,132	780,914	5.28	18,954	3,925	27.51	44.40	48.27	530
Barcelona	99,823	234,330	819,336	1,090,141	5.71	9,629	2,888	54.25	72.11	75.40	540
Tarragona	132,015	168,626	583,061	1,218,832	5.99	13,957	2,827	35.06	52.80	57.14	419
Castellón\Castelló	237,566	47,406	1,273,990	406,152	5.90	22,360	4,203	20.37	33.30	37.40	341
Sevilla	197,185	250,609	455,251	645,757	2.46	6,179	1,816	48.37	68.68	77.91	479
Almería	150,415	30,572	701,114	243,045	5.22	9,252	2,124	27.64	40.95	45.90	277
Granada	143,828	96,225	385,043	235,441	2.58	5,364	1,464	31.26	40.17	53.39	440
Cádiz	110,118	52,475	404,581	187,805	3.64	5,217	1,335	30.90	42.27	50.29	354
Huelva	83,792	10,785	339,601	53,549	4.16	3,302	778	32.32	38.70	49.07	88
Huesca	86,829	9,728	282,410	35,003	3.29	4,935	1,096	17.50	22.65	32.07	299

¹ Provinces belonging to uniprovincial Autonomous Communities have not been included because they are reflected.

² Annual average.

³ Occupancy rate is weighted by number of bedplaces or by number of apartments

4. Travellers, overnight stays, capacity, occupancy, total number of staff from tourist areas with greater number of overnight stays

Tourist Areas	Travellers		Overnight stays		Average stay	Capacity ¹		Level of occupancy ²			Employed personnel ¹
	Residents in Spain	Residents abroad	Residents in Spain	Residents abroad		Estimated bed-places	Estimated holiday dwelling	Per bed-places	Per Holiday dwelling	Per Holiday dwelling at weekend	
Isla de Tenerife	205,681	1,044,619	1,045,866	8,808,553	7.88	47,367	14,457	56.59	77.24	78.40	3,732
Isla de Gran Canaria	194,765	969,988	891,606	8,811,766	8.33	48,742	15,035	54.23	76.97	78.59	3,451
Isla de Lanzarote	101,315	749,390	585,307	6,377,406	8.18	32,336	9,577	58.09	83.82	84.59	2,567
Costa Blanca	334,230	617,992	2,016,147	4,685,979	7.04	82,502	17,977	22.15	36.71	39.03	1,981
Costa del Sol	278,698	826,716	1,024,808	5,113,054	5.55	40,402	10,156	41.32	62.46	65.17	2,605
Isla de Mallorca	65,871	727,984	271,806	5,319,334	7.04	23,616	7,906	62.66	73.61	73.96	1,954
Isla de Fuerteventura	74,845	286,786	357,957	2,541,937	8.02	14,828	4,617	52.95	78.29	79.36	1,128
Islas de Ibiza y Formentera	83,588	355,632	337,765	1,990,369	5.30	10,389	3,470	59.54	73.43	74.96	1,076
Costa Brava	119,252	209,408	577,054	1,482,110	6.27	25,060	4,959	22.26	34.09	36.66	443
Costa Daurada	121,276	162,475	550,332	1,186,281	6.12	13,181	2,665	35.78	54.19	58.39	394

² Annual average.

³ Occupancy rate is weighted by number of bedplaces or by number of apartments

5. Travellers, overnight stays, capacity, occupancy, total number of staff from tourist sites with greater number at overnights stays

Tourist sites	Travellers		Overnight stays		Average stay	Capacity ¹		Level of occupancy ²			Employed personnel ¹
	Residents in Spain	Residents abroad	Residents in Spain	Residents abroad		Estimated bed-places	Estimated holiday dwelling	Per bed-places	Per Holiday dwelling	Per Holiday dwelling at weekend	
San Bartolomé de Tirajana	134,933	586,986	623,212	5,455,846	8.42	31,554	9,864	52.37	74.61	76.36	2,152
Arona	57,711	468,972	342,723	3,985,869	8.22	19,880	6,281	59.35	76.35	77.32	1,621
Tías	46,437	407,945	266,984	3,537,549	8.37	16,679	5,156	61.43	84.99	85.65	1,142
Mogán	35,309	355,121	192,386	3,169,696	8.61	15,964	4,660	57.58	82.13	83.03	1,170
Adeje	25,445	325,140	142,318	2,715,502	8.15	14,292	4,032	54.30	81.27	81.25	972
Benidorm	97,751	341,521	548,345	2,193,880	6.24	21,171	5,169	35.36	58.85	63.71	656
Teguise	36,653	198,995	200,761	1,616,167	7.71	8,706	2,615	56.43	80.99	82.17	674
Madrid	229,622	265,765	747,952	978,873	3.49	9,325	3,550	50.54	69.90	74.25	555
Alcúdia	19,841	188,087	82,637	1,306,851	6.68	5,888	2,108	74.63	78.27	78.14	554
Puerto de la Cruz	84,542	105,995	380,348	979,473	7.14	5,555	2,175	66.40	80.22	83.84	511

¹ Annual average.

² Occupancy rate is weighted by number of bedplaces or by number of apartments

6. Travellers and overnight stays by countries of residence

Countries	Travellers		Overnight stays	
	Total	%	Total	%
TOTAL	12,277,366	100.00	73,428,512	100.00
Residents in Spain	4,538,970	36.97	19,007,005	25.89
Residents abroad	7,738,397	63.03	54,421,507	74.11
Total residents abroad	7,738,397	100.00	54,421,507	100.00
Total residents in E.U (excluding Spain)	6,495,222	83.93	47,344,687	87.00
- Germany	852,695	11.02	7,549,140	13.87
- Austria	38,826	0.50	249,602	0.46
- Belgium	123,298	1.59	895,837	1.65
-Denmark	188,828	2.44	1,461,319	2.69
- Finland	152,352	1.97	1,285,969	2.36
- France	567,602	7.33	3,428,426	6.30
- Greece	8,230	0.11	44,591	0.08
- Ireland	359,854	4.65	2,701,535	4.96
- Italy	377,730	4.88	1,901,457	3.49
- Luxembourg	6,410	0.08	42,350	0.08
- Netherlands	449,941	5.81	3,491,519	6.42
- Poland	113,347	1.46	708,180	1.30
- Portugal	92,035	1.19	383,608	0.70
- United Kingdom	2,645,312	34.18	19,342,647	35.54
- Czech Republic	34,359	0.44	221,306	0.41
- Sweden	361,662	4.67	2,945,695	5.41
- Other EU countries	122,739	1.59	691,507	1.27
Norway	240,019	3.10	2,213,273	4.07
Russia	107,561	1.39	781,529	1.44
Switzerland	82,005	1.06	538,039	0.99
Other european countries	88,865	1.15	556,774	1.02
United States of America	158,313	2.05	572,650	1.05
Rest of America	207,662	2.68	953,463	1.75
African countries	78,113	1.01	374,349	0.69
Other countries	280,637	3.63	1,086,743	2.00

7. 2018 Evolution: Travellers, overnight stays and average stay

	Travellers			Overnight stays			Average stay
	Total	Residents in Spain	Residents abroad	Total	Residents in Spain	Residents abroad	
TOTAL	12,277,366	4,538,970	7,738,397	73,428,512	19,007,005	54,421,507	5.98
Enero	564,263	157,734	406,529	4,095,961	612,995	3,482,966	7.26
Febrero	628,557	193,245	435,313	4,094,316	638,234	3,456,083	6.51
Marzo	809,810	307,905	501,905	4,804,008	1,035,730	3,768,278	5.93
Abril	893,679	314,449	579,230	4,677,423	1,052,049	3,625,373	5.23
Mayo	1,055,930	327,856	728,074	5,515,961	1,138,646	4,377,314	5.22
Junio	1,328,639	514,780	813,859	7,098,471	1,882,164	5,216,307	5.34
Julio	1,609,810	663,422	946,388	10,020,157	3,391,987	6,628,171	6.22
Agosto	1,750,427	782,468	967,959	11,677,219	4,407,947	7,269,272	6.67
Septiembre	1,297,171	482,590	814,581	7,518,053	2,124,455	5,393,598	5.80
Octubre	977,898	301,064	676,834	5,768,122	1,044,287	4,723,835	5.90
Noviembre	656,870	217,582	439,288	4,056,587	733,716	3,322,871	6.18
Diciembre	704,313	275,875	428,437	4,102,234	944,795	3,157,439	5.82

8. Capacity, occupancy rate and employed personnel

	Capacity		Level of occupancy				Employed personnel
	Estimated bedplaces	Estimated Holiday dwelling	Per bedplaces	Per bedplaces at weekend	Per Holiday dwelling	Per Holiday dwelling at weekend	
TOTAL¹	510,462	133,356	38.97	41.88	59.01	62.27	28,593
Enero	409,298	109,313	32.19	33.76	54.37	56.20	23,142
Febrero	412,695	109,376	35.28	37.89	59.10	61.90	23,625
Marzo	444,786	116,425	34.71	37.68	57.33	60.45	25,019
Abril	475,383	124,853	32.66	35.90	50.99	54.73	26,139
Mayo	553,713	147,313	31.92	35.43	49.40	53.51	31,089
Junio	619,408	158,575	37.91	41.22	57.96	61.46	33,406
Julio	652,834	167,241	48.85	52.27	64.83	68.64	35,244
Agosto	635,384	161,897	58.14	59.05	74.93	75.98	35,516
Septiembre	609,152	158,157	40.87	43.21	63.64	66.26	33,896
Octubre	502,860	133,567	36.74	41.19	57.38	62.42	28,838
Noviembre	405,423	107,096	33.25	37.05	57.30	61.46	23,846
Diciembre	404,609	106,460	32.58	35.66	53.25	56.88	23,351

¹ Annual Average. Average Occupancy rates weighted by apartments or bedplaces.

**Tourist Accommodation Occupancy Survey
Campsite Occupancy Survey (COS)
Year 2018**

Provisional data

31st January 2019

1. Travellers, overnight stays and average stay by category of establishment

Category	Travellers			Overnight stays			Average stay
	Total	Residents	Residents	Total	Residents	Residents	
		in Spain	abroad		in Spain	abroad	
TOTAL	7,883,002	5,190,879	2,692,123	39,500,783	20,220,527	19,280,255	5.01
Luxury and first-class	3,469,648	2,170,701	1,298,947	18,363,350	8,907,046	9,456,304	5.29
Second-class	3,701,140	2,479,248	1,221,892	18,274,120	9,368,225	8,905,894	4.94
Third-class	712,214	540,930	171,285	2,863,313	1,945,256	918,057	4.02
Cumulative annual rate	0.18	-0.47	1.43	2.04	1.22	2.91	1.86

2. Open establishments, capacity, occupancy and number of staff by category of establishments

Category	Estimated open establishments ¹	Capacity ¹		Occupied pitches	Occupancy rate per pitch ²	Weekend occupancy rate ²	Employed personnel ¹
		Estimated bed-places	Estimated pitches				
TOTAL	765	500,222	154,452	22,737,577	40.19	42.53	6,840
Luxury and first-class	203	213,036	63,634	9,351,868	40.12	42.61	3,096
Second-class	433	242,170	76,625	11,373,556	40.54	42.87	3,177
Third-class	130	45,016	14,194	2,012,152	38.65	40.60	567
Cumulative annual rate	0.00	1.18	0.70	1.46	0.72	-0.19	3.75

¹ Annual average

² Occupancy rate is weighted by number of pitches

3. Travellers, overnight stays and average stay by autonomous cities and communities

Autonomous cities and communities	Travellers			Overnight stays			Average stay
	Total	Residents	Residents	Total	Residents	Residents	
		in Spain	abroad		in Spain	abroad	
TOTAL	7,883,002	5,190,879	2,692,123	39,500,783	20,220,527	19,280,255	5.01
Andalucía	993,085	677,180	315,906	4,221,606	2,482,656	1,738,950	4.25
Aragón	372,749	239,091	133,658	1,122,525	733,144	389,382	3.01
Asturias, Principado de	187,444	129,389	58,055	753,572	604,871	148,702	4.02
Balears, Illes	47,352	21,876	25,476	254,586	84,997	169,589	5.38
Canarias	35,818	28,479	7,340	136,928	69,877	67,051	3.82
Cantabria	272,132	194,060	78,071	1,348,424	1,088,378	260,046	4.96
Castilla y León	309,390	191,975	117,415	780,294	591,488	188,806	2.52
Castilla-La Mancha	97,284	81,012	16,272	263,345	232,892	30,453	2.71
Cataluña	3,276,175	2,088,409	1,187,767	16,956,561	7,949,615	9,006,945	5.18
Comunitat Valenciana	997,096	633,708	363,388	8,810,397	3,164,112	5,646,286	8.84
Extremadura	107,643	80,928	26,716	291,631	229,530	62,100	2.71
Galicia	260,852	188,250	72,602	948,556	778,142	170,414	3.64
Madrid, Comunidad de	249,746	208,752	40,994	884,153	743,026	141,127	3.54
Murcia, Región de	137,302	90,778	46,524	1,214,110	382,636	831,475	8.84
Navarra, Comunidad Foral de	140,010	102,541	37,470	450,608	382,122	68,485	3.22
País Vasco	251,546	109,781	141,765	670,545	349,170	321,376	2.67
Rioja, La	147,377	124,671	22,705	392,942	353,872	39,070	2.67
Ceuta	-	-	-	-	-	-	-
Melilla	-	-	-	-	-	-	-

4. Open establishments, capacity, occupancy and number of staff by autonomous cities and communities

Autonomous cities and communities	Estimated open establishment	Capacity ¹		Occupied pitches	Occupancy rate per pitch ²	Weekend occupancy rate ²	Employed personnel ¹
		Estimated bed-places	Estimated pitches				
TOTAL³	767	500,952	154,765	22,737,577	40.19	42.53	6,840
Andalucía	117	68,148	21,905	2,253,454	28.12	31.59	919
Aragón	68	24,295	7,429	727,820	26.70	30.12	348
Asturias, Principado de	23	13,255	4,073	440,934	29.45	30.96	135
Balears, Illes	5	2,189	937	95,051	41.37	40.77	77
Canarias	6	4,809	1,573	102,353	17.81	21.22	26
Cantabria	24	18,074	5,718	904,658	43.11	43.31	156
Castilla y León	52	21,299	6,813	603,433	24.14	27.27	191
Castilla-La Mancha	20	7,488	2,312	213,979	25.25	30.27	88
Cataluña	194	184,037	54,573	8,771,316	43.80	45.77	2,708
Comunitat Valenciana	116	73,773	23,066	4,895,804	58.11	60.14	1,155
Extremadura	17	6,495	2,170	222,637	28.00	34.48	117
Galicia	47	17,052	5,422	471,920	23.63	26.11	223
Madrid, Comunidad de	19	17,568	5,953	1,068,647	49.16	47.71	223
Murcia, Región de	16	14,650	4,819	692,607	39.42	43.39	192
Navarra, Comunidad Foral de	18	11,350	3,046	365,470	32.76	37.25	122
País Vasco	17	9,107	2,703	385,008	38.76	41.06	122
Rioja, La	8	7,362	2,252	522,485	63.58	63.67	64
Ceuta	-	-	-	-	-	-	-
Melilla	-	-	-	-	-	-	-

¹ Annual average

² Occupancy rate is weighted by number of pitches

³ Calculated as sum of the average per CCAA

5. Travellers and overnight stays, average stay, capacity, occupancy and number of staff by provinces with the greater number of overnight stays³

Provinces	Travellers		Overnight stays		Average stay	Estimated open establishments ¹	Estimated pitches ¹	Occupancy rate per pitch ²	Employed personnel ¹
	Residents in	Residents abroad	Residents in	Residents abroad					
	Spain		Spain						
Girona	733,795	627,800	2,486,562	5,263,585	5.69	77	22,912	41.03	1,336
Tarragona	701,373	316,855	3,340,008	2,488,207	5.72	40	15,374	47.37	760
Alicante/Alacant	238,898	178,845	1,327,741	3,862,293	12.42	46	10,648	69.54	570
Barcelona	495,447	216,527	1,541,812	1,183,344	3.83	43	11,052	46.66	468
Castellón/Castelló	162,230	107,116	972,776	1,226,944	8.17	38	6,569	48.64	311
Valencia/València	232,580	77,427	863,595	557,048	4.58	31	5,849	47.95	274
Málaga	114,654	78,838	488,399	783,431	6.57	29	4,868	39.83	234
Cádiz	214,223	72,097	753,936	274,637	3.59	20	4,899	26.39	227
Huesca	177,467	85,530	548,774	265,848	3.10	42	5,269	30.07	253
Lleida	157,794	26,584	581,234	71,810	3.54	34	5,234	39.43	144
Huelva	138,982	25,949	568,659	84,288	3.96	9	3,750	24.30	112
Pontevedra	124,530	34,483	494,197	87,597	3.66	20	2,651	27.09	115
Almería	64,929	41,969	257,259	301,054	5.22	18	2,652	31.37	118
Gipuzkoa	73,397	100,332	211,664	245,668	2.63	10	1,768	35.12	70
Granada	58,642	51,201	184,823	203,867	3.54	21	2,603	24.82	108

¹ Annual average

² Occupancy rate is weighted by number of pitches

³ Provinces belonging to uniprovincial Autonomous Communities have not been included because they are reflected in previous tables

Press Release • Instituto Nacional de Estadística

6. Travellers, overnight stays, average stay, open establishments, capacity, occupancy and number of staff from tourist areas with the greatest number of overnight stays

Tourist areas	Travellers		Overnight stays		Average stay	Estimated open establishments ¹	Estimated pitches ¹	Occupancy rate per pitch ²	Employed personnel ¹
	Residents in Spain	Residents abroad	Residents in Spain	Residents abroad					
	Costa Brava	585,664	618,782	2,105,690					
Costa Daurada	625,077	281,017	2,910,780	2,308,124	5.76	30	13,405	48.85	663
Costa Blanca	184,705	148,691	970,365	3,377,366	13.04	38	8,340	74.65	497
Costa Barcelona	359,225	212,026	1,184,016	1,169,670	4.12	25	8,604	46.93	338
pn Aiguamolls de l'Empordá	78,427	188,927	441,178	1,719,563	8.08	11	4,805	47.15	355
Costa de Castellón	140,398	99,319	870,936	1,189,731	8.60	30	5,874	50.66	287
Pirineus	369,116	33,064	1,087,367	106,010	2.97	60	8,517	42.94	319
Costa del Sol	90,893	55,460	435,780	730,074	7.97	14	3,612	46.54	178
Costa Valencia	151,332	50,734	655,054	465,680	5.55	16	3,963	52.95	177
Costa Cálida	48,725	38,049	244,622	761,440	11.59	8	3,777	41.21	155
Costa de la Luz (Cádiz)	204,428	64,811	733,914	259,225	3.69	16	4,309	27.95	207
Pirineo Aragonés	175,584	84,710	543,870	267,821	3.12	38	5,007	29.22	245
Rías Baixas	150,302	42,088	576,950	104,764	3.54	27	3,749	22.10	154
Costa Verde	109,340	46,660	547,483	123,477	4.30	18	3,387	32.15	114
Costa de la Luz (Huelva)	131,685	22,217	554,457	70,495	4.06	6	3,596	23.66	103

¹ Annual average

² Occupancy rate is weighted by number of pitches

7. Travellers, overnight stays, average stay, open establishments, capacity, occupancy and number of staff from tourist sites with the greatest number at overnights stays

Tourist sites	Travellers		Overnight stays		Average stay	Estimated open establishments ¹	Estimated pitches ¹	Occupancy rate per pitch ²	Employed personnel ¹
	Residents in Spain	Residents abroad	Residents in Spain	Residents abroad					
	Benidorm	35,044	58,536	189,898					
Torroella de Montgrí	45,115	101,061	227,269	903,153	7.73	5	2,199	53.55	184
Mont-roig del Camp	61,213	72,339	412,499	699,581	8.33	4	2,919	46.06	140
Tarragona	91,267	42,749	592,411	286,826	6.56	5	2,432	56.27	199
Sant Pere Pescador	33,303	71,268	109,289	683,615	7.58	5	2,531	46.87	241
Blanes	98,407	47,328	300,747	439,018	5.08	7	2,349	50.44	155
Castelló d'Empúries	20,369	51,163	174,692	557,129	10.23	4	2,663	52.09	194
Cambrils	94,507	33,869	418,028	242,089	5.14	5	2,492	48.14	89
Cartagena	17,769	17,321	107,499	487,892	16.97	3	2,555	30.49	96
Pals	32,538	51,173	118,801	474,128	7.08	3	1,789	32.70	95
Marbella	37,165	24,558	219,581	334,172	8.97	3	1,313	49.30	71
Oliva	35,517	26,301	214,794	333,334	8.87	6	1,382	51.70	109

¹ Annual average

² Occupancy rate is weighted by number of pitches

8. Guests and overnight stays by countries of residence

Countries	Guests		Overnight stays	
	Total	%	Total	%
TOTAL	7,883,002	100.00	39,500,783	100.00
Residents in Spain	5,190,879	65.85	20,220,527	51.19
Residents abroad	2,692,123	34.15	19,280,255	48.81
TOTAL residents abroad	2,692,123	100.00	19,280,255	100.00
TOTAL residents in EU (excluding Spain)	2,527,199	93.87	18,521,428	96.06
- Germany	458,034	17.01	3,243,240	16.82
- Austria	19,855	0.74	85,496	0.44
- Belgium	120,405	4.47	1,079,414	5.60
- Denmark	18,885	0.70	158,817	0.82
- Finland	8,191	0.30	77,799	0.40
- France	763,637	28.37	4,008,310	20.79
- Greece	1,436	0.05	4,649	0.02
- Ireland	64,424	2.39	529,069	2.74
- Italy	80,176	2.98	262,435	1.36
- Luxembourg	3,816	0.14	29,461	0.15
- Netherlands	475,246	17.65	4,223,151	21.90
- Poland	19,444	0.72	111,240	0.58
- Portugal	64,740	2.40	187,316	0.97
- United Kingdom	374,266	13.90	4,161,452	21.58
- Czech Republic	9,073	0.34	29,286	0.15
- Sweden	21,637	0.80	238,103	1.23
- Other EU countries	23,932	0.89	92,189	0.48
Norway	6,931	0.26	90,427	0.47
Russia	3,247	0.12	16,919	0.09
Switzerland	69,060	2.57	360,267	1.87
Other European countries	21,986	0.82	87,344	0.45
United States of America	7,460	0.28	21,910	0.11
Rest of America	16,609	0.62	47,806	0.25
African countries	2,550	0.09	10,457	0.05
Other countries	37,081	1.38	123,695	0.64

Press *Release* • Instituto Nacional de Estadística

9. 2018 Evolution: Travellers, overnight stays and average stay

Months	Travellers			Overnight stays			Average stay
	Total	Residents in Spain	Residents abroad	Total	Residents in Spain	Residents abroad	
TOTAL	7,883,002	5,190,879	2,692,123	39,500,783	20,220,527	19,280,255	5.01
January	121,973	66,202	55,771	1,090,918	208,603	882,316	8.94
February	149,510	87,390	62,120	1,123,391	226,690	896,701	7.51
March	418,154	311,136	107,019	1,887,349	924,974	962,375	4.51
April	507,142	326,651	180,491	2,221,883	1,178,609	1,043,274	4.38
May	591,670	336,977	254,693	2,638,040	1,162,037	1,476,003	4.46
June	961,856	665,155	296,701	3,887,014	2,128,183	1,758,831	4.04
July	1,560,189	999,307	560,882	7,908,193	4,264,166	3,644,027	5.07
August	1,957,043	1,347,583	609,460	10,627,234	6,580,505	4,046,728	5.43
September	841,019	544,555	296,463	3,790,748	2,004,546	1,786,203	4.51
October	418,989	257,846	161,143	1,994,415	789,678	1,204,737	4.76
November	180,854	124,858	55,996	1,140,955	374,734	766,221	6.31
December	174,601	123,219	51,383	1,190,642	377,802	812,840	6.82

10. Open establishments, capacity, occupancy rate and employed personnel

Months	Estimated open establishments ¹	Capacity ¹		Occupied pitches	Occupancy rate per pitch ²	Weekend occupancy rate ²	Employed personnel ¹
		Estimated bed-places	Estimated pitches				
TOTAL	765	500,222	154,452	22,737,577	40.19	42.53	6,840
January	413	253,744	81,183	942,787	37.46	38.17	2,890
February	448	276,351	88,190	988,407	40.03	41.08	3,099
March	592	373,590	116,849	1,391,876	38.42	39.96	4,384
April	832	562,219	173,803	1,654,653	31.73	33.77	6,378
May	883	621,612	190,303	1,968,065	33.36	35.89	7,553
June	1,055	715,412	218,276	2,414,212	36.87	40.41	9,705
July	1,178	756,754	231,557	3,441,108	47.94	52.09	13,139
August	1,183	761,827	232,287	4,060,897	56.39	59.81	13,837
September	1,013	683,518	208,184	2,346,394	37.57	39.60	9,148
October	641	424,856	130,766	1,489,464	36.74	39.74	5,405
November	496	300,815	95,688	1,047,886	36.50	37.84	3,463
December	446	271,970	86,343	991,828	37.06	37.74	3,080

¹ Annual average

² Occupancy rate is weighted by number of pitches

**Tourist accommodation occupancy survey:
(Rural tourist accommodation)**

Year 2018

Provisional data

31st January 2019

1. Number of travellers, overnight stays and average stay by Autonomous Cities and Communities

Autonomous Communities	Number of travellers			Number of overnight stays			Average stay
	Total	Residents In Spain	Residents abroad	Total	Residents In Spain	Residents abroad	
TOTAL	4,250,768	3,377,784	872,984	11,407,883	8,184,068	3,223,815	2.68
Andalucía	371,569	233,375	138,194	1,313,356	571,559	741,798	3.53
Aragón	196,446	173,794	22,652	563,124	478,616	84,508	2.87
Asturias, Principado de	284,833	252,800	32,032	925,359	822,998	102,361	3.25
Balears, Illes	337,738	54,028	283,710	1,223,793	145,854	1,077,939	3.62
Canarias	82,490	29,839	52,650	403,196	90,620	312,576	4.89
Cantabria	242,649	215,847	26,801	589,635	527,910	61,726	2.43
Castilla y León	818,259	745,989	72,270	1,800,197	1,666,587	133,610	2.20
Castilla-La Mancha	300,994	283,848	17,146	694,630	645,657	48,974	2.31
Cataluña	486,935	421,985	64,950	1,264,828	993,712	271,116	2.60
Comunitat Valenciana	179,502	161,197	18,305	465,349	391,925	73,424	2.59
Extremadura	208,494	189,369	19,125	453,587	408,472	45,115	2.18
Galicia	217,733	154,920	62,813	416,423	310,859	105,564	1.91
Madrid, Comunidad de	152,455	143,840	8,615	291,937	273,347	18,590	1.91
Murcia, Región de	50,078	44,383	5,695	126,302	107,369	18,933	2.52
Navarra, Comunidad Foral de	118,737	108,913	9,824	362,553	327,236	35,317	3.05
País Vasco	162,174	126,387	35,787	420,425	332,783	87,642	2.59
Rioja, La	39,682	37,268	2,413	93,187	88,565	4,622	2.35
Ceuta	-	-	-	-	-	-	-
Melilla	-	-	-	-	-	-	-
Interannual rate	4.96	3.45	11.25	3.39	1.34	8.99	-1.49

2. Open rural establishments, bed-places, occupancy rates and employed personnel by Autonomous City and Community

Autonomous Communities	Estimated open rural establishments ¹	Estimated bed-places ¹	Occupancy rate ¹		Employed personnel ¹
			Of bed-places	Of bed-places Of bedrooms at weekend	
TOTAL	16,596	159,975	19.31	33.10	24,415
Andalucía	2,215	18,575	19.19	28.40	3,297
Aragón	1,182	9,325	16.29	29.92	1,348
Asturias, Principado de	1,357	13,444	18.64	25.99	1,830
Balears, Illes	347	6,799	48.49	48.77	1,987
Canarias	536	3,352	32.86	35.05	775
Cantabria	399	6,434	24.48	40.14	682
Castilla y León	3,556	31,332	15.62	33.38	4,858
Castilla-La Mancha	1,667	14,575	12.97	30.77	2,097
Cataluña	1,951	17,395	19.69	39.19	2,566
Comunitat Valenciana	829	10,040	12.59	21.02	1,193
Extremadura	577	7,004	17.65	34.43	841
Galicia	477	6,035	18.60	28.24	825
Madrid, Comunidad de	231	3,538	22.47	46.27	523
Murcia, Región de	148	2,317	14.83	31.32	246
Navarra, Comunidad Foral de	651	4,734	20.68	37.03	800
País Vasco	359	3,973	28.27	42.86	420
Rioja, La	115	1,104	22.64	47.25	125
Ceuta	-	-	-	-	-
Melilla	-	-	-	-	-
Interannual rate	1.54	2.74	0.63	-1.10	4.52

¹ Annual average and weighted average per places or rooms

3. Number of travellers, overnight stays and average stay of provinces with the greatest number of overnight stays¹

Provinces	Number of travellers			Number of overnight stays			Average stay
	Total	Residents In Spain	Residents abroad	Total	Residents In Spain	Residents abroad	
Málaga	129,589	44,930	84,659	714,676	142,497	572,179	5.51
Girona	209,616	177,658	31,959	572,353	425,742	146,611	2.73
Cáceres	171,293	156,005	15,288	377,366	340,574	36,792	2.20
Barcelona	144,341	124,495	19,846	365,054	290,519	74,534	2.53
Huesca	113,079	96,338	16,741	348,770	285,255	63,515	3.08
Ávila	145,943	141,683	4,260	344,006	330,326	13,679	2.36
Santa Cruz de Tenerife	58,469	20,694	37,776	303,287	66,095	237,192	5.19
Segovia	124,202	120,391	3,811	260,821	249,753	11,068	2.10
Burgos	110,020	92,711	17,309	235,244	210,506	24,738	2.14
Gipuzkoa	85,909	65,201	20,709	232,528	179,399	53,129	2.71
Salamanca	99,064	91,215	7,849	210,581	191,186	19,395	2.13
Soria	84,062	81,275	2,787	208,429	202,804	5,625	2.48
Lleida	86,563	81,199	5,364	207,403	187,731	19,673	2.40
León	101,088	79,942	21,146	203,454	175,967	27,487	2.01
Valencia/València	85,013	76,728	8,285	200,948	173,864	27,084	2.36

¹ Provinces belonging to uniprovincial Autonomous Communities have not been included because they are reflected in previous tables.

4. Open rural establishments, bed-places, occupancy rates and employed personnel in Provinces with the highest number of overnight stays¹

Provinces	Estimated open rural establishments ²	Estimated bed-places ²	Occupancy rate ²			Employed personnel ²
			Of bed-places	Of bed-places at weekend	Of bedrooms	
Málaga	1,207	8,214	23.61	28.17	32.53	1,695
Girona	637	6,477	23.91	46.35	27.80	714
Cáceres	472	5,723	17.98	35.24	23.11	675
Barcelona	531	4,655	21.22	43.24	26.20	883
Huesca	653	5,003	18.79	31.64	21.69	764
Ávila	772	6,147	15.21	34.34	18.07	995
Santa Cruz de Tenerife	435	2,550	32.53	34.29	48.12	600
Segovia	456	4,195	16.95	42.76	20.23	625
Burgos	399	3,902	16.40	34.90	19.60	481
Gipuzkoa	165	1,895	32.58	46.59	37.49	200
Salamanca	514	4,265	13.45	28.15	16.56	655
Soria	332	3,156	17.88	39.23	20.25	430
Lleida	526	3,961	14.21	30.04	17.05	633
León	451	3,578	15.44	25.85	18.82	634
Valencia/València	234	3,891	14.03	21.71	17.88	351

¹ Provinces belonging to uniprovincial Autonomous Communities have not been included because they are reflected in previous tables.

² Annual average and weighted average per places or rooms

5. Number of travellers, overnight stays, average stay, capacity and occupancy rates in areas with the highest number of overnight stays

Areas	Number of travellers		Number of overnight stays			Capacity ¹		Occupancy rate ¹		
	Residents	Residents	Residents	Residents	Average	Estimated	Estimated	Of	Of bed-	Of bedrooms
	In Spain	abroad	In Spain	abroad	stay	open rural	bed-places	bed-places	places	
						establishments		at weekend		
Isla de Mallorca	36,437	246,250	95,185	935,886	3.65	297	5,819	47.76	46.98	55.63
Pirineus	163,305	10,024	402,220	44,149	2.58	768	6,429	18.79	39.42	22.22
Costa Brava	107,652	28,729	256,992	135,220	2.88	389	4,043	26.26	48.88	30.38
Costa Verde	93,730	10,304	320,319	34,223	3.41	482	5,288	18.14	25.37	21.63
Pirineo Aragonés	87,175	15,856	256,220	63,564	3.10	613	4,703	18.34	30.76	21.65
Pirineo Navarro	90,881	7,675	284,823	26,936	3.16	550	3,847	21.86	36.69	24.85
Extremadura Norte	119,169	5,664	267,932	17,646	2.29	323	3,909	19.93	38.25	25.86
P.Nacional Picos de Europa	77,266	13,456	230,097	38,956	2.97	291	2,722	26.75	32.60	29.91
P.Natural Sierras de Tejeda, Almijara y Alhama	11,173	38,985	28,482	235,021	5.25	389	2,380	30.10	31.01	43.76
Paisatges Barcelona	56,541	6,935	128,691	27,327	2.46	280	2,320	18.17	38.56	22.68
P.Nacional Sierra de Guadarrama	82,438	5,533	138,979	11,943	1.72	117	1,650	24.87	52.98	30.89
Costa del Sol	4,409	14,176	20,369	128,600	8.02	248	1,598	27.64	29.61	39.77
Isla de Tenerife	13,979	23,707	29,255	119,280	3.94	106	1,150	35.34	37.72	44.82
P.Natural de Corona Forestal	11,904	19,854	23,048	98,742	3.83	77	871	38.20	40.73	47.11
Isla de Menorca	14,092	20,995	40,751	73,706	3.26	32	582	52.70	58.90	56.67

¹ Annual average and weighted average per places or rooms

6. Number of travellers, overnight stays, average stay, capacity, occupancy rates and employed personnel per rural house by Autonomous City and Community¹

Autonomous Communities	Number of travellers		Number of overnight stays			Capacity ²		Occupancy rate ²		Employed personnel ²
	Residents	Residents	Residents	Residents	Average	Estimated	Estimated	Of	Of bed-	
	In Spain	abroad	In Spain	abroad	stay	open rural	bed-places	bed-places	places	
						establish.		at weekends		
TOTAL	2,266,932	482,839	5,713,990	1,979,763	2.80	14,293	118,912	17.54	31.99	18,618
Andalucía	232,059	137,020	568,544	738,983	3.54	2,212	18,447	19.24	28.43	3,281
Aragón	142,311	19,043	383,768	69,402	2.81	951	7,390	16.53	30.59	1,091
Asturias, Principado de	100,500	9,620	325,083	34,738	3.27	850	5,593	17.42	24.32	1,001
Balears, Illes	25,544	95,939	57,471	293,805	2.89	126	1,947	48.81	52.77	455
Canarias	11,498	26,274	55,253	204,421	6.87	507	2,540	27.89	29.24	616
Cantabria	56,420	4,668	163,835	16,920	2.96	200	2,713	17.97	30.70	262
Castilla y León	441,349	15,713	1,139,434	53,949	2.61	3,169	23,200	13.98	31.47	3,770
Castilla-La Mancha	272,676	16,958	616,614	48,736	2.30	1,637	13,811	13.11	31.21	2,054
Cataluña	421,985	64,950	993,712	271,116	2.60	1,951	17,395	19.69	39.19	2,566
Comunitat Valenciana	102,209	16,222	249,548	64,341	2.65	779	7,072	12.05	21.99	1,011
Extremadura	83,552	5,271	181,985	13,174	2.20	359	3,522	15.09	32.24	489
Galicia	100,774	34,389	217,144	65,125	2.09	354	4,249	17.90	27.91	541
Madrid, Comunidad de	26,953	1,484	74,462	4,590	2.78	86	934	23.07	43.43	103
Murcia, Región de	33,826	3,343	91,419	14,227	2.84	135	1,981	14.49	32.54	208
Navarra, Comunidad Foral de	108,780	9,776	327,031	35,226	3.06	649	4,720	20.73	37.11	793
País Vasco	69,229	19,756	180,123	46,388	2.55	212	2,294	26.41	41.30	251
Rioja, La	37,268	2,413	88,565	4,622	2.35	115	1,104	22.64	47.25	125
Ceuta	-	-	-	-	-	-	-	-	-	-
Melilla	-	-	-	-	-	-	-	-	-	-

¹ To facilitate the comparability between data from different Autonomous Communities (and because of the different regulation and different characteristics), a group called rural house has been created, with those accommodations with similar typology (location, capacity, etc...).

The variables included in the previous table have been estimated with that type of establishments.

The variables shown in the table have been estimated with the type of accommodation under rural tourist accommodation.

² Annual average and weighted average per places or rooms

7. Travellers and overnight stays by country of residence

Results by countries	Travellers		Overnight stays	
	Total	%	Total	%
TOTAL	4,250,768	100.00	11,407,883	100.00
Residents Spain	3,377,784	79.46	8,184,068	71.74
Residents abroad	872,984	20.54	3,223,815	28.26
Total Residents abroad	872,984	100.00	3,223,815	100.00
Total Residents in EU (excluding Spain)	656,945	75.25	2,668,279	82.77
- Germany	191,626	21.95	880,603	27.32
- Belgium	33,111	3.79	153,560	4.76
- France	115,507	13.23	388,331	12.05
- Italy	27,350	3.13	84,465	2.62
- Netherlands	67,746	7.76	310,142	9.62
- Portugal	18,171	2.08	43,168	1.34
- United Kingdom	144,611	16.57	588,823	18.26
Switzerland	26,409	3.03	97,285	3.02
Other European countries	88,929	10.19	313,043	9.71
United States of America	42,700	4.89	102,218	3.17
Other countries	116,825	13.38	262,178	8.13

8. Evolution of year 2018: Number of travellers, overnight stays and average stay

	Number of travellers			Number of overnight stays			Average stay
	Total	Residents in Spain	Residents abroad	Total	Residents in Spain	Residents abroad	
TOTAL	4,250,768	3,377,784	872,984	11,407,883	8,184,068	3,223,815	2.68
January	139,565	121,780	17,785	321,380	241,345	80,035	2.30
February	185,941	162,959	22,982	416,164	318,679	97,485	2.24
March	329,007	287,913	41,094	822,242	669,529	152,713	2.50
April	342,566	273,016	69,550	812,974	587,864	225,110	2.37
May	341,518	237,785	103,733	792,398	468,116	324,282	2.32
June	407,572	309,243	98,329	973,621	636,897	336,724	2.39
July	483,186	354,754	128,432	1,547,114	1,003,710	543,405	3.20
August	613,097	472,216	140,881	2,299,329	1,670,667	628,662	3.75
September	419,183	306,461	112,722	1,042,153	666,820	375,333	2.49
October	376,627	292,775	83,852	897,824	619,117	278,707	2.38
November	280,182	250,900	29,281	617,889	522,296	95,593	2.21
December	332,325	307,983	24,342	864,792	779,027	85,765	2.60

9. Evolution of year 2018: Open rural establishments, bed-places, occupancy rates and employed personnel

	Estimated open rural establishments ¹	Estimated bed-places ¹	Occupancy rate ¹		Employed personnel ¹
			Of bed-places	Of bedrooms at weekend	
TOTAL	16,596	159,975	19.31	33.10	24,415
January	14,716	136,948	7.56	15.91	20,063
February	15,163	143,024	10.36	23.94	20,805
March	16,260	156,436	16.89	30.69	24,120
April	16,824	164,195	16.45	32.64	25,052
May	17,035	166,131	15.34	30.33	25,481
June	17,442	170,330	18.96	32.18	26,451
July	17,613	172,253	28.70	44.53	27,143
August	17,596	172,107	42.48	47.76	27,453
September	17,298	168,852	20.48	33.89	26,339
October	16,976	164,504	17.54	38.65	25,185
November	16,234	153,864	13.34	29.55	22,562
December	15,993	151,054	18.37	31.45	22,327

¹ Annual average and weighted average per places or rooms

**Tourist Accommodation Occupancy Survey
Hostels Occupancy Survey (HOS)**

Year 2018

Provisional data

31st January 2019

1. Travellers, overnight stays and average stay by Autonomous Cities and Communities

Autonomous cities and communities	Travellers			Overnight stays			Average stay
	Total	Residents in Spain	Residents abroad	Total	Residents in Spain	Residents abroad	
TOTAL	1,079,526	735,407	344,120	2,910,844	2,036,543	874,300	2.70
Andalucía	162,369	141,943	20,426	522,923	471,416	51,507	3.22
Aragón	41,528	38,878	2,649	129,738	121,693	8,046	3.12
Asturias, Principado de	3,634	3,278	356	14,607	13,710	896	4.02
Balears, Illes	-	-	-	-	-	-	-
Canarias	32,155	10,320	21,835	100,346	27,047	73,298	3.12
Cantabria	16,664	14,903	1,761	45,786	43,140	2,647	2.75
Castilla y León	49,432	43,355	6,075	141,497	127,471	14,026	2.86
Castilla - La Mancha	43,762	42,084	1,679	153,573	150,442	3,131	3.51
Cataluña	373,795	210,915	162,882	953,257	514,826	438,428	2.55
Comunitat Valenciana	110,382	62,823	47,559	301,084	168,061	133,024	2.73
Extremadura	12,966	12,283	683	34,987	33,552	1,434	2.70
Galicia	7,137	6,301	836	31,418	29,278	2,141	4.40
Madrid, Comunidad de	60,666	27,069	33,597	121,829	61,185	60,644	2.01
Murcia, Región de	-	-	-	-	-	-	-
Navarra, Comunidad Foral de	37,262	27,568	9,693	78,354	63,924	14,430	2.10
País Vasco	98,962	68,826	30,135	216,867	154,035	62,832	2.19
Rioja, La	12,000	8,946	3,054	20,252	16,787	3,465	1.69
Ceuta	-	-	-	-	-	-	-
Melilla	-	-	-	-	-	-	-
Annual rate	5.43	8.96	-1.40	6.71	10.93	-1.98	1.21

2. Open establishments, capacity, occupancy and number of staff by autonomous cities and communities

Autonomous cities and communities	Capacity		Occupancy rate		Employed personnel ¹
	Estimated open establishments ¹	Estimated bed-places ¹	Of bed-places ²	Of bed-places at weekend ²	
TOTAL	238	24,958	31.86	37.67	1,842
Andalucía	16	3,437	41.69	44.78	232
Aragón	21	1,786	19.87	25.51	96
Asturias, Principado de	4	306	13.00	19.17	43
Balears, Illes	-	-	-	-	-
Canarias	27	620	44.37	50.29	65
Cantabria	8	566	22.04	25.45	35
Castilla y León	23	2,106	18.31	24.82	171
Castilla - La Mancha	24	2,545	16.40	20.33	117
Cataluña	42	5,901	44.15	52.21	393
Comunitat Valenciana	13	2,197	37.43	44.60	106
Extremadura	9	698	13.66	23.90	45
Galicia	5	588	14.51	16.77	59
Madrid, Comunidad de	6	687	48.68	59.64	193
Murcia, Región de	-	-	-	-	-
Navarra, Comunidad Foral de	10	856	24.90	25.53	77
País Vasco	18	2,057	28.68	31.63	145
Rioja, La	6	310	17.86	30.14	15
Ceuta	-	-	-	-	-
Melilla	-	-	-	-	-
Annual rate	8.61	2.26	4.37	2.19	0.05

¹ Annual average.

² Weighted average per bed-places.

3. Travellers and overnight stays by countries of residence

Countries	Travellers		Overnight stays		Average stay
	Total	%	Total	%	
TOTAL	1,079,526	100.00	2,910,844	100.00	2.70
Residents in Spain	735,407	68.12	2,036,543	69.96	2.77
Residents abroad	344,120	31.88	874,300	30.04	2.54
TOTAL residents abroad	344,120	100.00	874,300	100.00	2.54
TOTAL residents in E.U. (excluding Spain)	213,158	61.94	528,435	60.44	2.48
- Germany	38,103	11.07	102,442	11.72	2.69
- Belgium	6,781	1.97	17,559	2.01	2.59
- France	53,877	15.66	125,743	14.38	2.33
- Italy	32,945	9.57	83,023	9.50	2.52
- Netherlands	10,479	3.05	28,199	3.23	2.69
- Portugal	8,586	2.50	18,076	2.07	2.11
- United Kingdom	33,463	9.72	81,573	9.33	2.44
Switzerland	5,175	1.50	12,957	1.48	2.50
Other European countries	53,274	15.48	128,068	14.65	2.40
United States of America	23,733	6.90	55,004	6.29	2.32
Other countries	77,704	22.58	221,656	25.35	2.85

HOS (TABLES ANNEX) - YEAR 2018. Provisional data (2/3)

4. Evolution in the year 2018: travellers, overnight stays and average stay

Months	Travellers			Overnight stays			Average stay
	Total	Residents in Spain	Residents abroad	Total	Residents in Spain	Residents abroad	
TOTAL	1,079,526	735,407	344,120	2,910,844	2,036,543	874,300	2.70
January	41,271	25,200	16,070	112,569	70,797	41,772	2.73
February	61,895	41,671	20,224	149,524	98,704	50,820	2.42
March	103,524	77,731	25,793	236,736	170,998	65,738	2.29
April	106,003	74,549	31,453	245,459	165,619	79,839	2.32
May	120,776	87,112	33,665	257,496	176,877	80,619	2.13
June	126,793	96,176	30,618	308,423	232,010	76,412	2.43
July	120,380	80,667	39,713	506,004	403,671	102,333	4.20
August	119,494	73,640	45,855	375,221	265,752	109,468	3.14
September	85,470	50,217	35,253	218,313	124,779	93,535	2.55
October	84,688	54,714	29,974	204,934	132,108	72,826	2.42
November	61,888	39,910	21,978	156,514	96,749	59,766	2.53
December	47,344	33,820	13,524	139,651	98,479	41,172	2.95

5. Evolution in the year 2018: establishments, capacity, occupancy and employed personnel

Months	Capacity		Occupancy rate		Employed personnel ¹
	Estimated open establishments ¹	Estimated bed-places ¹	Of bed-places ²	Of bed-places at weekend ²	
TOTAL	238	24,958	31.86	37.67	1,842
January	190	19,565	18.56	22.01	1,384
February	207	22,076	24.19	31.85	1,535
March	246	25,847	29.55	35.81	1,843
April	253	26,097	31.35	39.82	1,883
May	251	26,440	31.42	37.42	1,933
June	262	28,244	36.40	36.44	2,177
July	279	30,043	54.33	59.85	2,511
August	261	28,347	42.70	46.92	2,196
September	241	24,979	29.13	34.18	1,856
October	236	24,435	27.05	36.29	1,714
November	221	22,796	22.89	30.89	1,532
December	205	20,632	21.83	28.76	1,535

¹ Annual average.

² Weighted average per bed-places.

HOLIDAY DWELLING PRICE INDEX (HDPI)

Year 2018

Provisional data

31st January 2019

Annual variation rate by rates

	Annual variation rate
TOTAL	3.28
Normal	1.75
Weekend	0.53
Tour-operators and travel agencies	4.92

Annual variation rate by modalities

	Annual variation rate
TOTAL	3.28
Studio	2.96
Dwellings 2/4 bedplaces	3.74
Dwellings 4/6 bedplaces	2.26

The Cumulative annual rates of HDPI, have been calculated as annual average rates of HDPI, weighted per number of appartments of every month.

Tourist Campsite Price Index (TCSPI). 2002 Base

Year 2018

Provisional data

31st January 2019

Annual variation rate by rates

	Annual variation rate
TOTAL	1.37
Normal rate	2.75
Special rate for stays up to one month	0.40
Special rate for stays longer than one month	2.23
Bungalow rate ¹	0.07

¹ 2014 Base

Annual variation rate by categories

	Annual variation rate
TOTAL	1.37
Luxury and first	1.73
Second	1.00
Third	2.13

The Cumulative annual rates of TCSPI have been calculated as annual average rates of TCSPI, weighted per number of pitches of every month.

TCSPI (ANNEX OF TABLES) - Annual 2018. Provisional data

Rural Tourism Accommodation Price Index (RTAPI)

Year 2018

Provisional data

31th January 2019

Annual variation rates by Autonomous Cities and Communities

	Variation Rate Annual
TOTAL	2.05
Andalucía	2.67
Aragón	-0.32
Asturias, Principado de	4.43
Balears, Illes	0.46
Canarias	1.55
Cantabria	2.73
Castilla y León	1.42
Castilla - La Mancha	1.91
Cataluña	3.28
Comunitat Valenciana	6.44
Extremadura	-2.27
Galicia	2.68
Madrid, Comunidad de	3.49
Murcia, Región de	2.22
Navarra, Comunidad Foral de	3.99
País Vasco	0.96
Rioja, La	1.64
Ceuta	-
Melilla	-

Annual variation rate by rates

	Variation Rate Annual
TOTAL	2.05
Normal	2.01
Weekend	2.07

Annual variation rate rent modality

	Variation Rate Annual
TOTAL	2.05
Shared use (in case of per room rent modality)	1.68
Full use (rent of entire dwelling)	2.20

The Cumulative annual rates of RTPAI have been calculated as annual average rates of RTPAI per number of rooms-establishments every month.