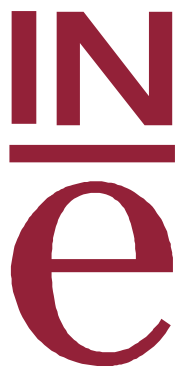


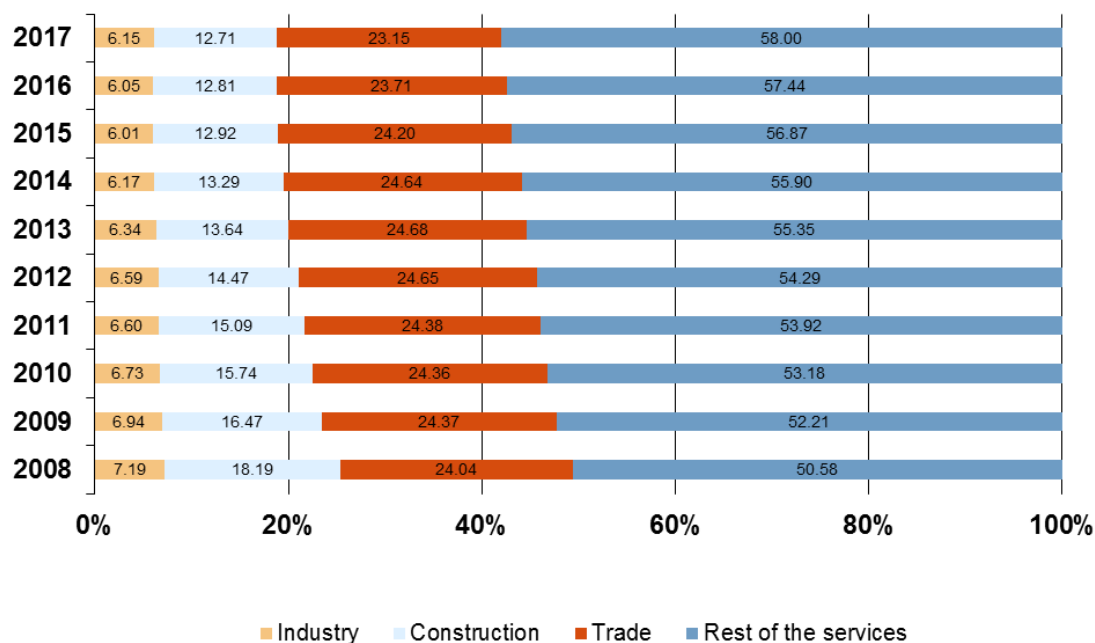
INSTITUTO NACIONAL DE ESTADISTICA



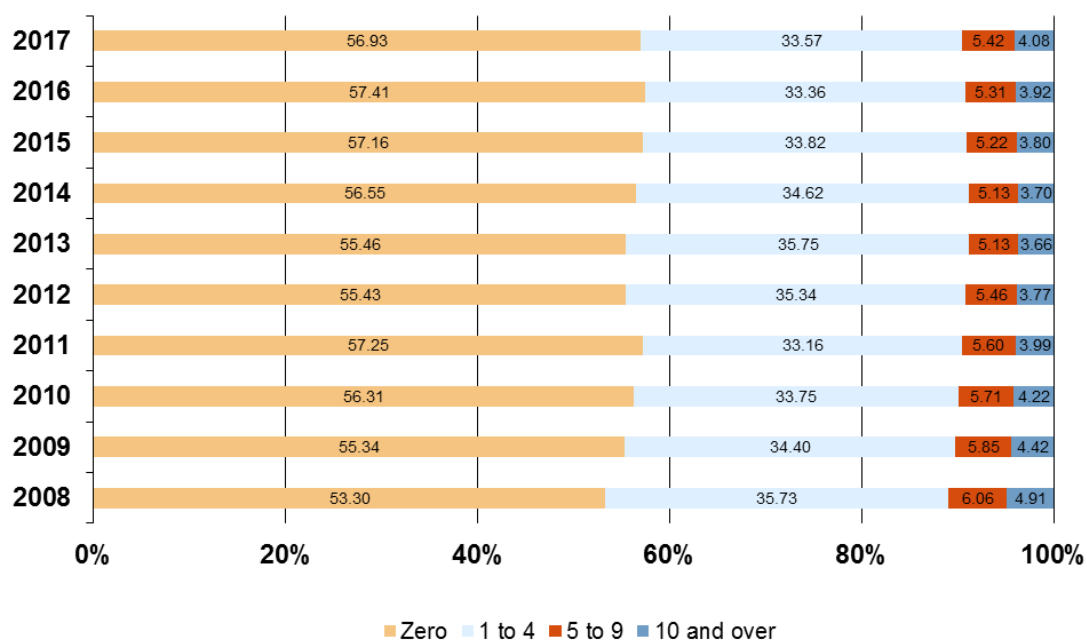
## Graphic Annex

## Series 1.- Stock of enterprises

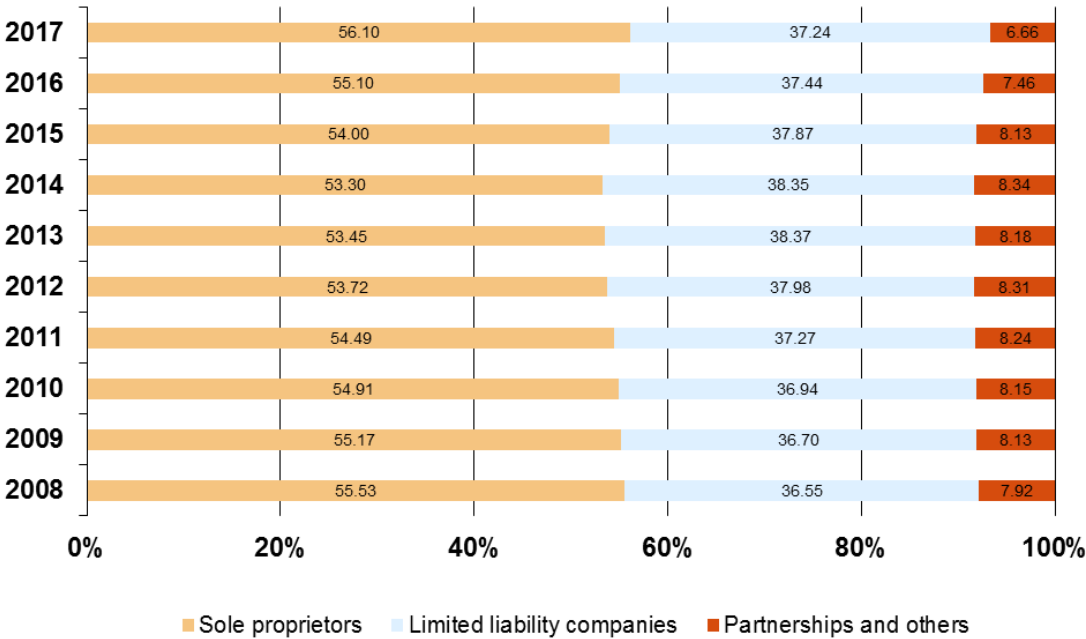
Graph 1.1: Distribution by economic sectors



Graph 1.2: Distribution by size classes (number of employees)

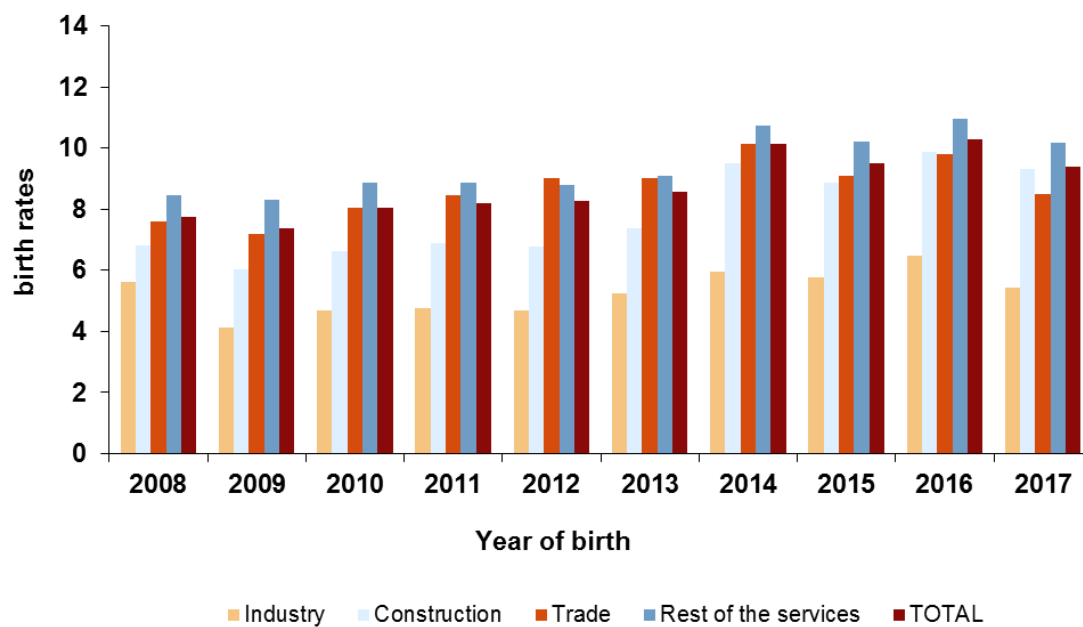


Graph 1.3: Distribution by legal forms

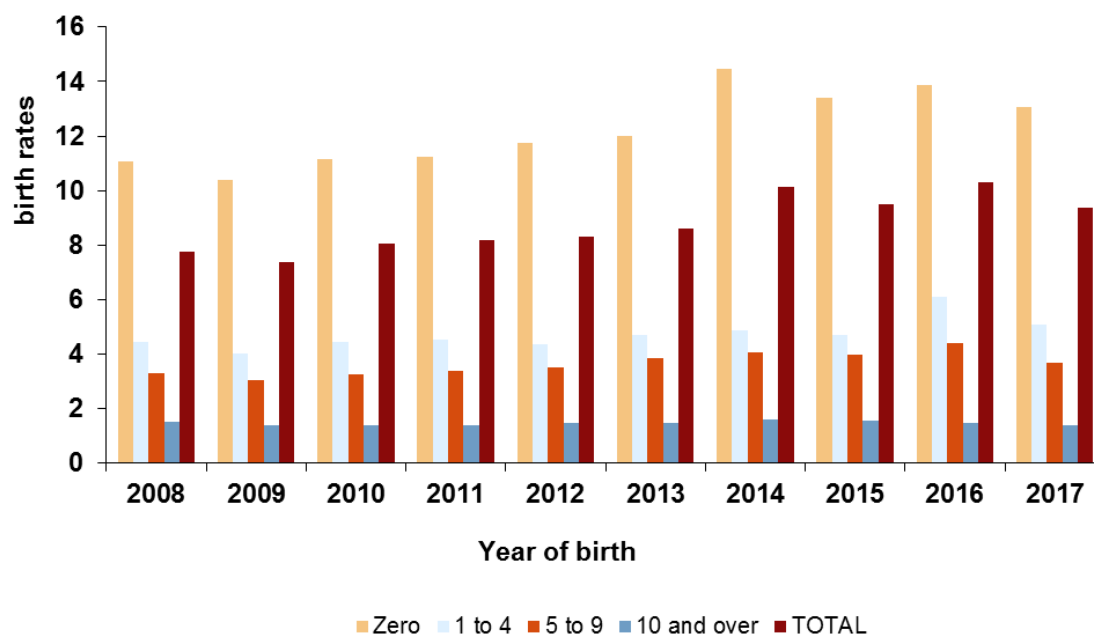


## Series 2.- Enterprise births

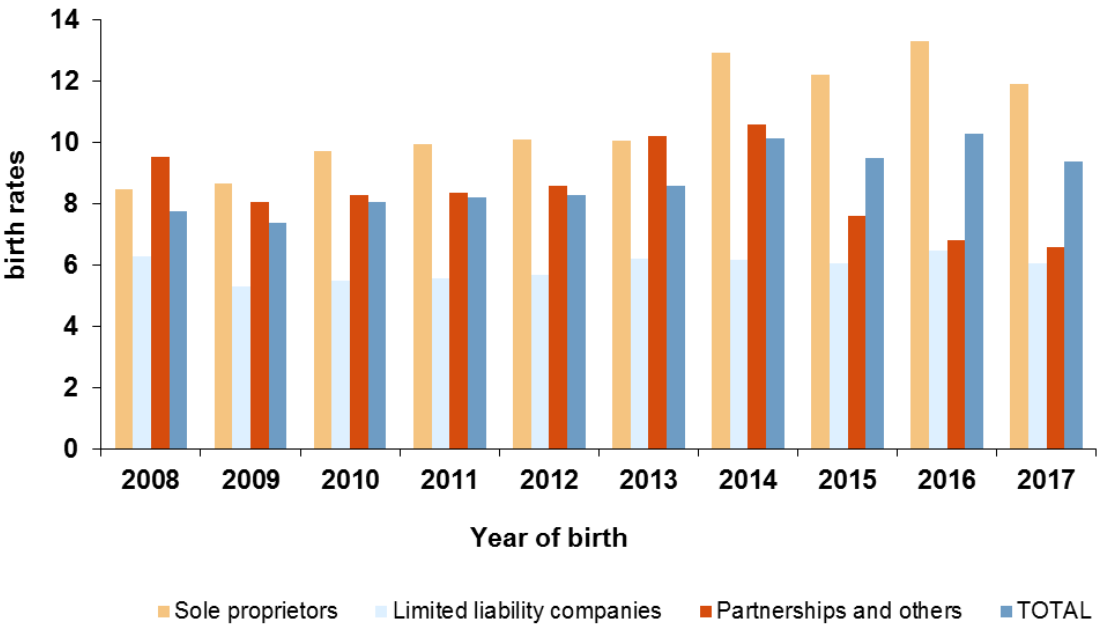
Graph 2.1: Rates by economic sectors



Graph 2.2: Rates by size classes (number of employees)

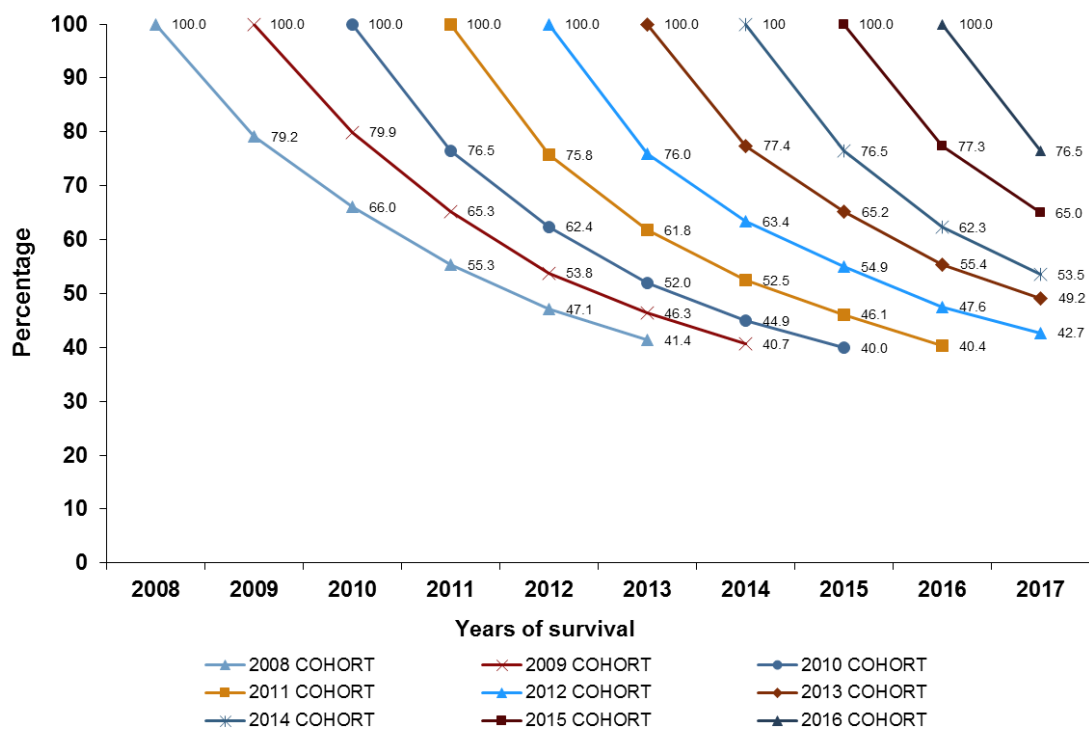


Graph 2.3: Rates by legal forms

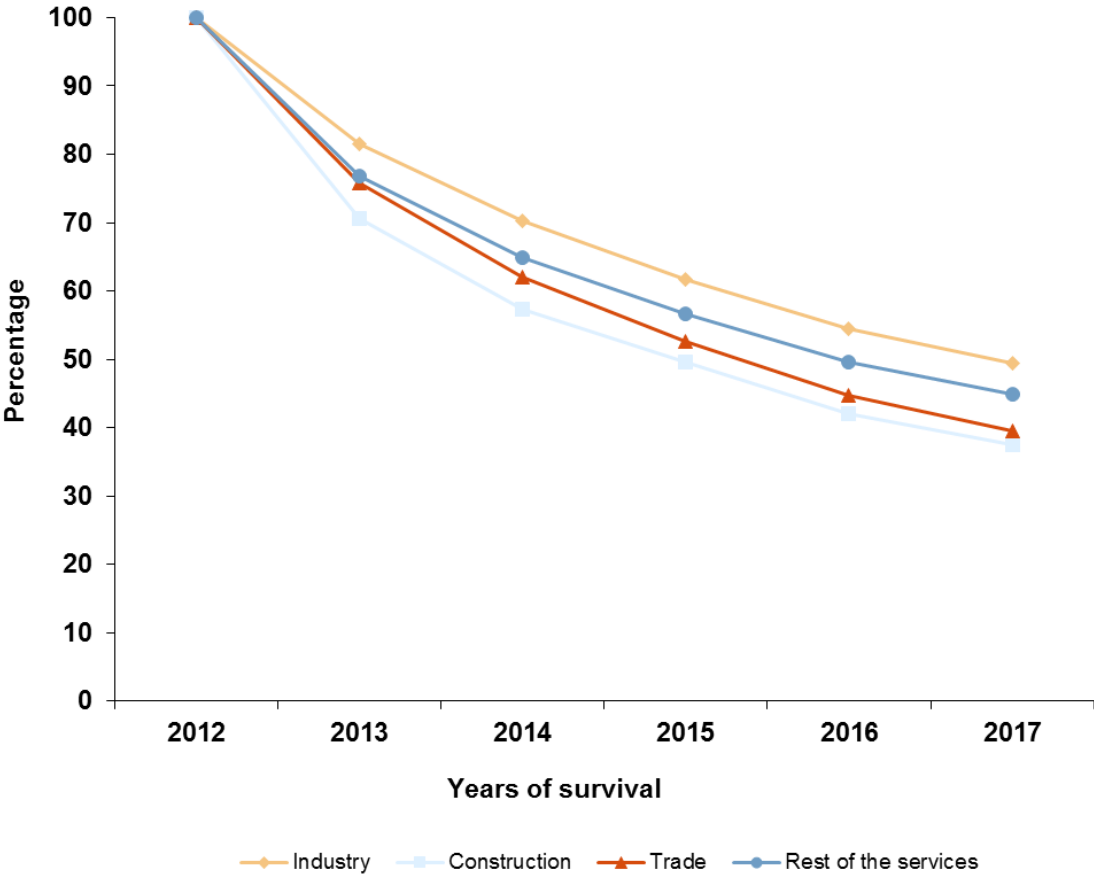


# Series 3.- Survival of enterprises

Graph 3.1: Survival rates in the cohorts from 2008 to 2016

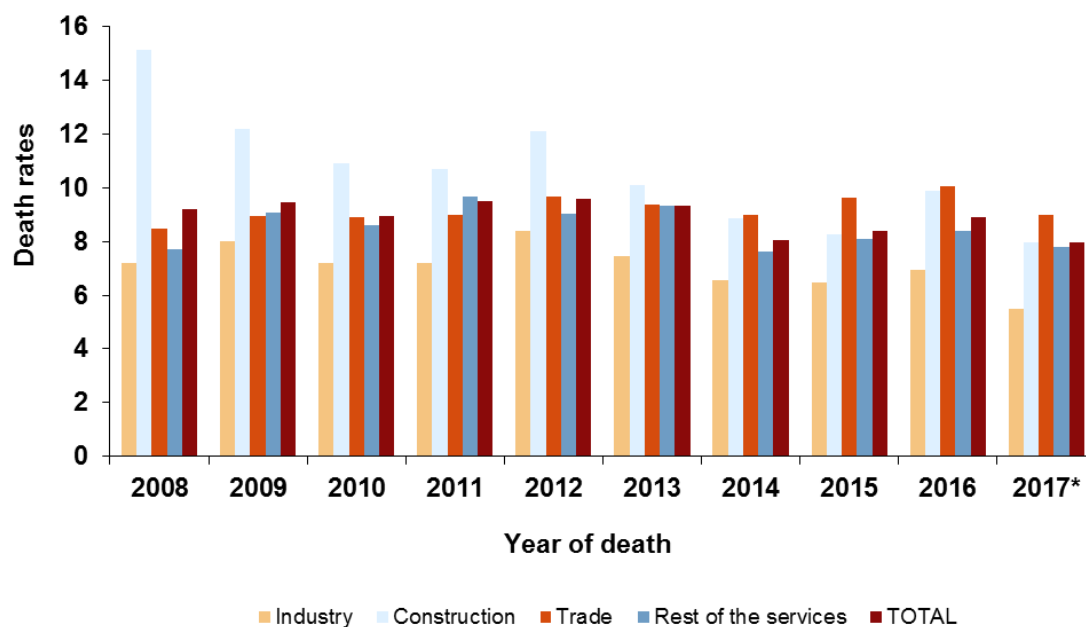


Graph 3.2: Survival rates in the cohort of 2012 by economic sectors



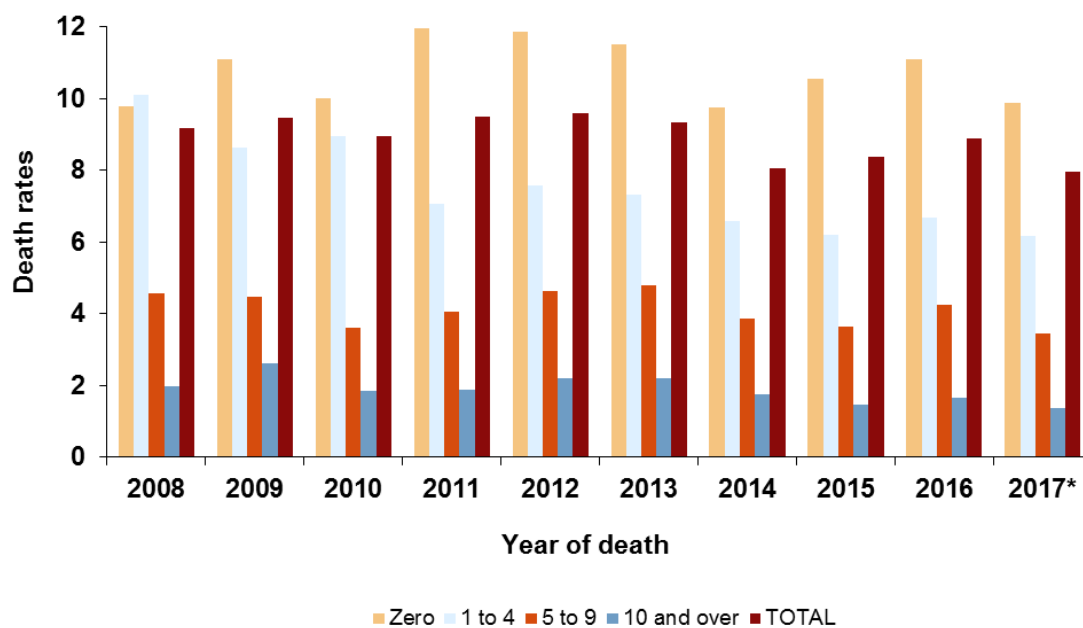
## Series 4.- Enterprise deaths

Graph 4.1: Rates by economic sectors



(\*)Provisional data.

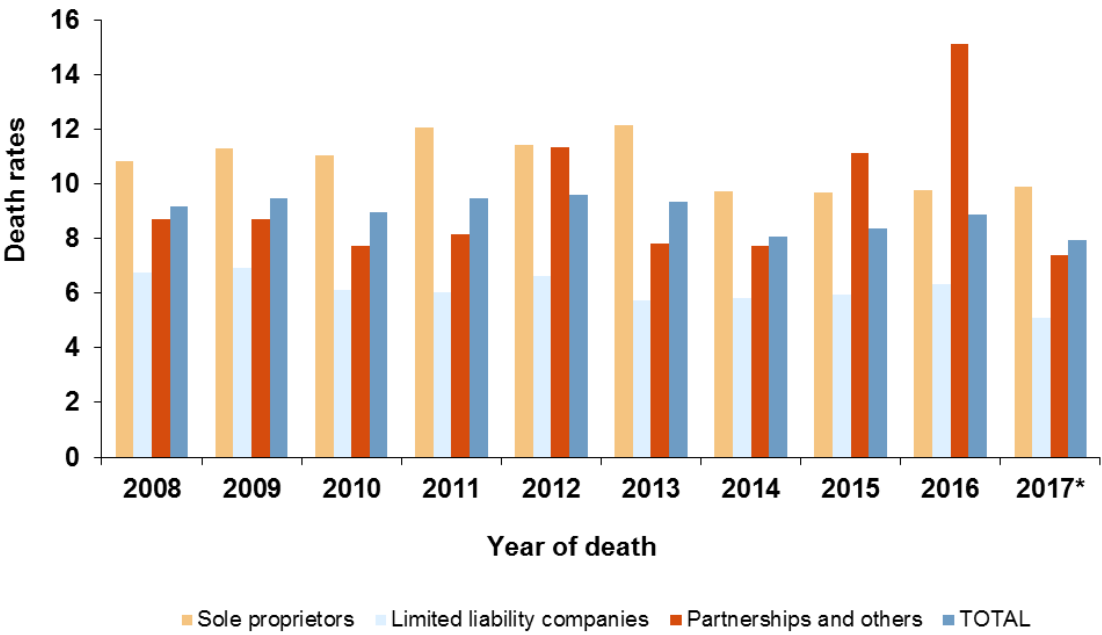
Graph 4.2: Rates by size classes (number of employees)



(\*) Provisional data.



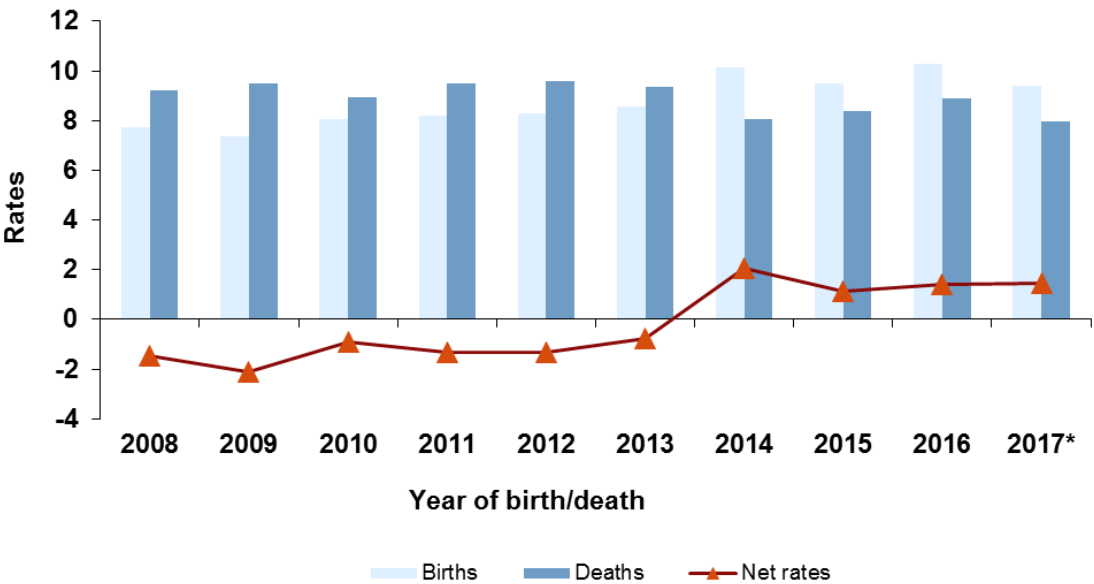
Graph 4.3: Rates by legal forms



(\*)Provisional data.

# Series 5.- Net rates

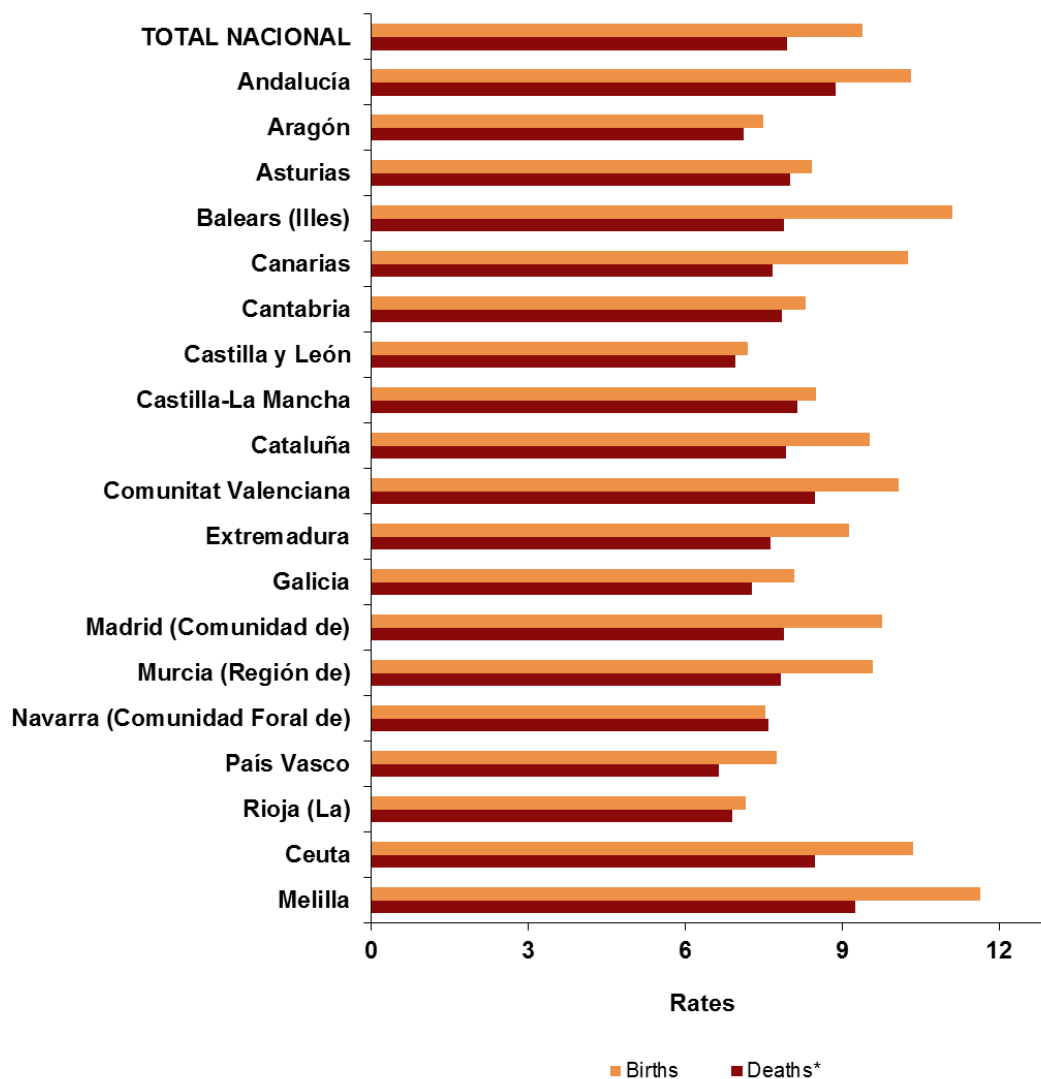
Graph 5.1: Net rates (births - deaths) on total units



(\*)Provisional data for the death rate in 2017

## Series 6.- Autonomous Communities and Cities

Graph 6.1: Birth and death rates in 2017 by Autonomous Communities and Cities



(\*)Provisional data for death rates in 2017.