

27 March 2018

Structural Business Statistics: Services Sector
Year 2016. Preview Results

Turnover of the Services sector stood at 460,350 million euros in 2016

More than one fifth of the sector's turnover corresponded to Transport and storage

Turnover of companies in the non-financial market Services sector¹ reached 460,350 million euros in 2016. In 2016, gross value added by services companies stood at 208,347 million euros.

For the reference year 2016 various methodological improvements have been implemented on the Structural Business Statistics, framed within the *"Integration Project of the Structural Business Statistics"*. As a consequence of these changes, **the results presented today are not strictly comparable to those of other years** because the evolution of variables is due not only to actual changes produced in this period, but also to the effects of the methodological improvements on the estimation of these variables².

Main magnitudes³. Year 2016

Variables económicas	Millones de euros
Cifra de negocios	460.350
Total de compras de bienes y servicios	271.473
Valor añadido a coste de los factores	208.347
Gastos de personal	127.303
Sueldos y salarios	100.030
Excedente bruto de explotación	81.043
Inversión en activos materiales	30.443

¹ The population under study is the set of companies whose main activity is described in the sections H, I, J, L, M, N, R and divisions 95 and 96 of the section S of the CNAE-2009 (see details in the methodological note included at the end of this document).

² For more details, you can refer to the specific document *'Measure of the impact of the methodological changes in Structural Business Statistics 2016'*:

http://www.ine.es/metodologia/t37/metodologia_eee_cambios2016.pdf

³ All the economic variables are valued at current prices.

Results by activity sections⁴

More than a fifth of the sector's turnover in 2016 (22.4%) corresponded to *Transport and storage*. Companies in this activity employed 14.3% of the total personnel in the sector.

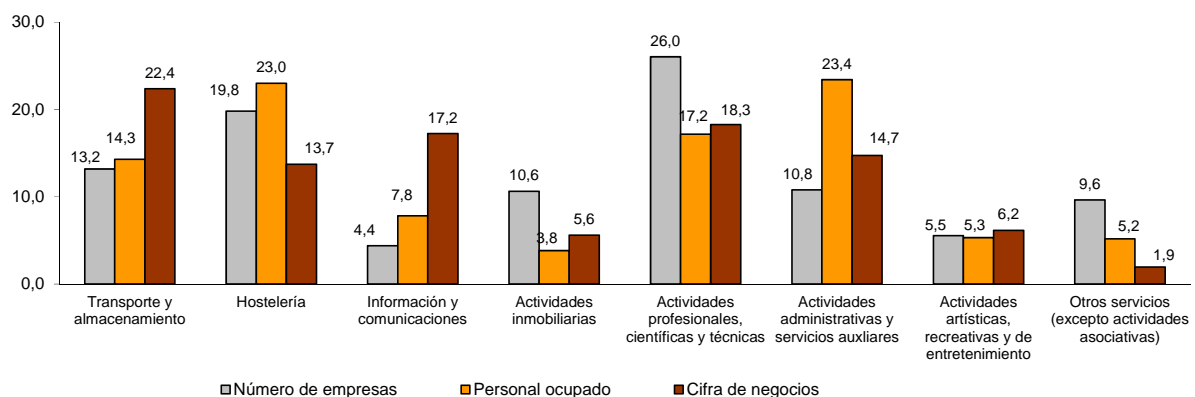
The following section of activity with greater weight in turnover was *Professional, scientific and technical activities*, with 18.3% of the total turnover of the sector and 17.2% of employment.

The activities that employed the greatest number of people were *Administrative and support service activities* (23.4% of the total) and *Accommodation* (23.0%).

Number of companies, employed personnel and turnover by activity sections. Year 2016

Sección de actividad	Número de empresas		Personal ocupado		Cifra de negocios	
	Total	% sobre el total	Media anual	% sobre el total	Millones de euros	% sobre el total
Transporte y almacenamiento	191.537	13,2	844.371	14,3	102.910	22,4
Hostelería	288.007	19,8	1.359.771	23,0	63.155	13,7
Información y comunicaciones	63.918	4,4	462.757	7,8	79.380	17,2
Actividades inmobiliarias	154.305	10,6	226.545	3,8	25.744	5,6
Actividades profesionales, científicas y técnicas	378.479	26,0	1.014.870	17,2	84.080	18,3
Actividades administrativas y servicios auxiliares	156.926	10,8	1.383.574	23,4	67.800	14,7
Actividades artísticas, recreativas y de entretenimiento	80.552	5,5	314.387	5,3	28.347	6,2
Otros servicios (excepto actividades asociativas)	139.952	9,6	306.275	5,2	8.934	1,9
TOTAL	1.453.677	100,0	5.912.549	100,0	460.350	100,0

Distribution (in percent) in the Services sector of the number of companies, personnel employed and turnover by divisions of activity. Year 2016



⁴ The companies studied were classified according to their main activity. Likewise, all of the study variables referring to the company were assigned to said activity.

Results by divisions of activity

At a more disaggregated level, the divisions with greater contribution to the sector's turnover in 2016 were *Warehousing and support activities for transportation* (9.4% of the total), *Land transport and transport via pipelines* (9.3%) and *Food and beverage service activities* (9.0%).

On the other hand, the divisions of activity that employed the largest number of people were *Food and beverage service activities* (18.3% of the total), *Services to buildings and landscape activities* (10.1%) and *Land transport and transport via pipelines* (8.5%).

Turnover and employed personnel by divisions of activity. Year 2016

División de actividad	Cifra de negocios		Personal ocupado	
	Millones de euros	% sobre el total	Media anual	% sobre el total
Transporte y almacenamiento				
- Transporte terrestre y por tubería	42.995	9,3	503.884	8,5
- Transporte marítimo y por vías navegables interiores	1.963	0,4	7.145	0,1
- Transporte aéreo	10.071	2,2	29.300	0,5
- Almacenamiento y actividades anexas al transporte	43.324	9,4	218.765	3,7
- Actividades postales y de correos	4.557	1,0	85.277	1,4
Hostelería				
- Servicios de alojamiento	21.511	4,7	276.448	4,7
- Servicios de comidas y bebidas	41.644	9,0	1.083.322	18,3
Información y comunicaciones				
- Edición	5.914	1,3	50.556	0,9
- Actividades cinematográficas, de vídeo y de programas de televisión, grabación de sonido y edición musical	5.146	1,1	32.161	0,5
- Actividades de programación y emisión de radio y televisión	5.341	1,2	28.192	0,5
- Telecomunicaciones	32.019	7,0	66.874	1,1
- Programación, consultoría y otras actividades relacionadas con la informática	28.851	6,3	258.978	4,4
- Servicios de información	2.110	0,5	25.997	0,4
Actividades inmobiliarias				
- Actividades inmobiliarias	25.744	5,6	226.545	3,8
Actividades profesionales, científicas y técnicas				
- Actividades jurídicas y de contabilidad	19.199	4,2	355.983	6,0
- Actividades de las sedes centrales; actividades de consultoría de gestión empresarial	14.637	3,2	112.798	1,9
- Servicios técnicos de arquitectura e ingeniería; ensayos y análisis	25.353	5,5	263.635	4,5
- Investigación y desarrollo	2.019	0,4	46.461	0,8
- Publicidad y estudios de mercado	16.862	3,7	117.880	2,0
- Otras actividades profesionales, científicas y técnicas	5.044	1,1	96.077	1,6
- Actividades veterinarias	966	0,2	22.037	0,4
Actividades administrativas y servicios auxiliares				
- Actividades de alquiler	10.664	2,3	61.298	1,0
- Actividades relacionadas con el empleo	5.383	1,2	216.213	3,7
- Actividades de agencias de viajes, operadores turísticos, servicios de reservas y actividades relacionadas	20.202	4,4	55.948	0,9
- Actividades de seguridad e investigación	4.759	1,0	132.855	2,2
- Servicios a edificios y actividades de jardinería	13.168	2,9	597.197	10,1
- Actividades administrativas de oficina y otras actividades auxiliares a las empresas	13.624	3,0	320.063	5,4
Actividades artísticas, recreativas y de entrenamiento				
- Actividades de creación, artísticas y espectáculos	2.389	0,5	60.008	1,0
- Actividades de bibliotecas, archivos, museos y otras actividades culturales	752	0,2	16.897	0,3
- Actividades de juegos de azar y apuestas	14.031	3,0	43.971	0,7
- Actividades deportivas, recreativas y de entretenimiento	11.176	2,4	193.511	3,3
Otros servicios				
- Reparación de ordenadores, efectos personales y artículos de uso doméstico	2.552	0,6	58.567	1,0
- Otros servicios personales	6.382	1,4	247.708	4,2
TOTAL	460.350	100,0	5.912.549	100,0

Distribution (in percentage) of turnover by divisions of activity. Year 2016



Productivity

The productivity of the services sector (value added per employed person) was 35,238 euros in 2016.

The divisions of activity that experienced the highest productivity were *Telecommunications* (190,453 euros) and *Gambling and betting activities* (97,913 euros).

On the other hand, those with the lowest productivity were *Other personal services (laundries, hairdressers and other personal services)*, with 13,427 euros, and *Food and beverage services*, with 14,959 euros.

Productivity (in euros) by divisions of activity in the Services sector. Year 2016



Geographical destination of sales

In 2016, 86.4% of sales in the services sector were made within Spain, 7.6% were made to European Union countries and 6.0% to the rest of the world.

Sales outside Spain amounted to 62,719 million euros, representing 13.6% of the total.

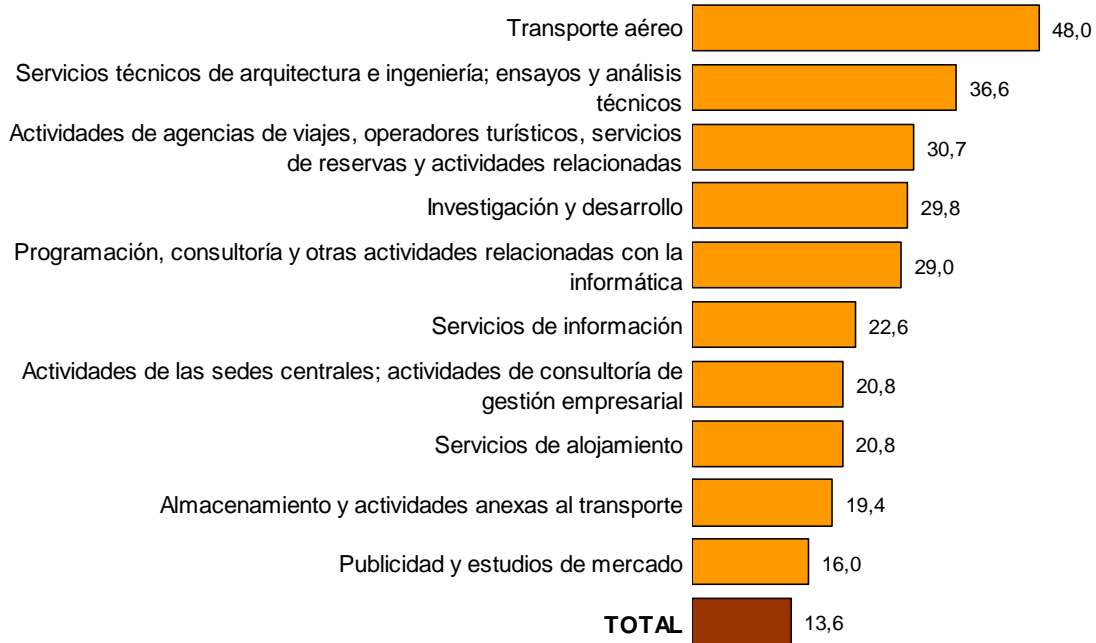
The divisions of activity with the highest percentage of sales outside Spain were *Air transport* (48.0%) and *Architectural and engineering activities; technical testing and analysis* (36.6%).

Sales outside Spain by divisions of activity in the Services sector. Year 2016⁵

División de actividad	Ventas fuera de España	
	Millones de euros	% sobre el total de ventas
- Transporte aéreo	4.839	48,0
- Servicios técnicos de arquitectura e ingeniería; ensayos y análisis técnicos	9.286	36,6
- Actividades de agencias de viajes, operadores turísticos, servicios de reservas y actividades relacionadas	6.199	30,7
- Investigación y desarrollo	602	29,8
- Programación, consultoría y otras actividades relacionadas con la informática	8.353	29,0
- Servicios de información	477	22,6
- Actividades de las sedes centrales; actividades de consultoría de gestión	3.051	20,8
- Servicios de alojamiento	4.467	20,8
- Almacenamiento y actividades anexas al transporte	8.408	19,4
- Publicidad y estudios de mercado	2.706	16,0
- Transporte marítimo y por vías navegables interiores	298	15,2
- Edición	848	14,3
- Actividades deportivas, recreativas y de entretenimiento	1.357	12,1
- Actividades cinematográficas, de vídeo y de programas de televisión, grabación de sonido y edición musical	592	11,5
- Transporte terrestre y por tubería	4.632	10,8
- Otras actividades profesionales, científicas y técnicas	520	10,3
- Actividades de programación y emisión de radio y televisión	494	9,3
- Actividades veterinarias	84	8,7
- Actividades postales y de correos	361	7,9
- Actividades administrativas de oficina y otras actividades auxiliares a las empresas	751	5,5
- Telecomunicaciones	1.760	5,5
- Actividades jurídicas y de contabilidad	1.054	5,5
- Actividades de bibliotecas, archivos, museos y otras actividades culturales	37	4,9
- Actividades de alquiler	488	4,6
- Reparación de ordenadores, efectos personales y artículos de uso doméstico	74	2,9
- Actividades de creación, artísticas y espectáculos	56	2,4
- Actividades relacionadas con el empleo	107	2,0
- Actividades inmobiliarias	390	1,5
- Servicios de comidas y bebidas	283	0,7
- Actividades de seguridad e investigación	30	0,6
- Otros servicios personales	29	0,5
- Servicios a edificios y actividades de jardinería	51	0,4
- Actividades de juegos de azar y apuestas	34	0,2
TOTAL	62.719	13,6

⁵ Sales to non-residents are not included if these have been carried out within Spain.

Divisions of activity with the highest percentage of sales outside Spain. Year 2016

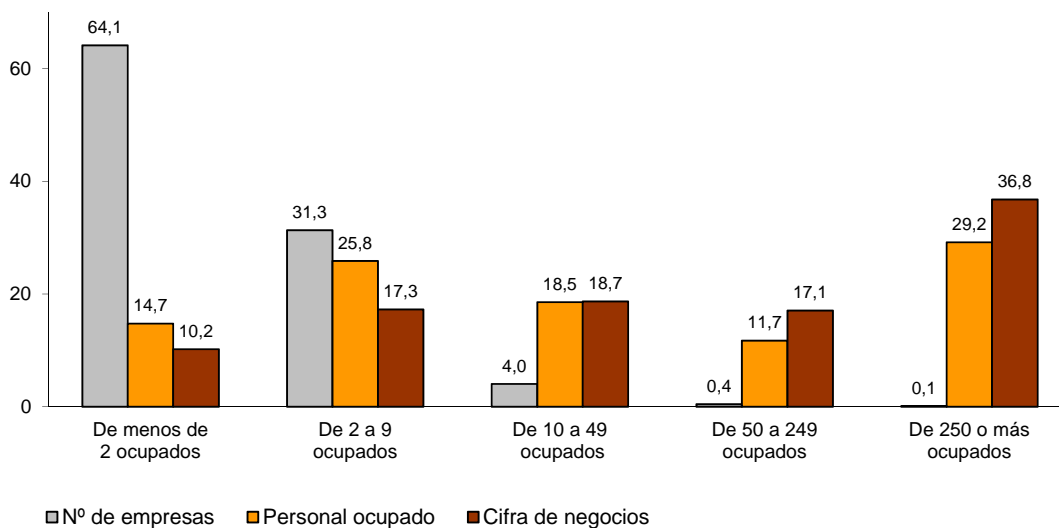


Results by company size

The services sector is characterised by a predominance of very small companies. More than 95 per cent of them had less than 10 employees in 2016. These companies employed 40.5% of the personnel, but their turnover represented slightly less than 28% of the sector's total.

On the other hand, the companies with 250 or more employees accounted for only 0.1% of the total, although they generated 36.8% of the sector's turnover.

Distribution (%) in the Services sector of the number of companies, employed personnel and turnover by size of the company. Year 2016



In six divisions of activity, companies with less than 10 employees generated more than half of the turnover of the corresponding branch: *Real estate activities* (72.6%), *Legal and accounting activities* (55.0%), *Veterinary activities* (81.2%), *Creative, arts and entertainment activities* (61.6%), *Repair of computers, personal effects and household goods* (57.8%) and *Other personal services* (59.6%).

On the other hand, in five activities, companies with 250 or more employees generated more than 70% of the turnover of their sector: *Air transport* (93.7%), *Programming and broadcasting activities* (78.4%), *Telecommunications* (78.8%), *Employment activities* (83.1%) and *Security and investigation activities* (76.7%).

Distribution (%) of turnover by size of the company and divisions of activity. Year 2016

División de actividad	De menos de 2 ocupados	De 2 a 9 ocupados	De 10 a 49 ocupados	De 50 a 249 ocupados	De 250 ó más ocupados
Transporte y almacenamiento					
- Transporte terrestre y por tubería	13,9	18,5	25,8	17,5	24,3
- Transporte marítimo y por vías navegables interiores	6,8	8,9	12,5	25,1	46,7
- Transporte aéreo	0,1	0,2	0,6	5,5	93,7
- Almacenamiento y actividades anexas al transporte	5,4	14,7	22,3	25,3	32,3
- Actividades postales y de correos	3,0	10,6	12,2	13,6	60,6
Hostelería					
- Servicios de alojamiento	2,7	8,7	25,0	29,1	34,5
- Servicios de comidas y bebidas	8,1	40,5	32,8	6,1	12,6
Información y comunicaciones					
- Edición	3,8	10,0	21,3	34,0	30,9
- Actividades cinematográficas, de vídeo y de programas de televisión, grabación de sonido y edición musical	8,2	13,1	23,6	19,5	35,7
- Actividades de programación y emisión de radio y televisión	2,1	1,9	3,8	13,8	78,4
- Telecomunicaciones	1,5	4,4	5,9	9,4	78,8
- Programación, consultoría y otras actividades relacionadas con la informática	4,1	6,4	11,1	13,4	65,0
- Servicios de información	10,9	10,7	23,1	35,1	20,3
Actividades inmobiliarias					
- Actividades inmobiliarias	38,3	34,3	11,6	8,0	7,8
Actividades profesionales, científicas y técnicas					
- Actividades jurídicas y de contabilidad	20,1	34,9	18,1	10,3	16,6
- Actividades de las sedes centrales; actividades de consultoría de gestión empresarial	6,9	12,6	19,8	27,6	33,2
- Servicios técnicos de arquitectura e ingeniería; ensayos y análisis técnicos	13,2	15,3	17,4	15,6	38,5
- Investigación y desarrollo	6,8	9,5	24,8	31,5	27,5
- Publicidad y estudios de mercado	10,3	11,7	26,3	37,7	14,1
- Otras actividades profesionales, científicas y técnicas	24,0	21,3	18,3	14,7	21,7
- Actividades veterinarias	21,2	60,0	18,8	(1)	0,0
Actividades administrativas y servicios auxiliares					
- Actividades de alquiler	16,1	17,3	19,5	17,2	29,9
- Actividades relacionadas con el empleo	1,9	1,9	4,3	8,8	83,1
- Actividades de agencias de viajes, operadores turísticos, servicios de reservas y actividades relacionadas con los mismos	12,6	12,8	18,3	27,8	28,5
- Actividades de seguridad e investigación	3,3	3,3	5,1	11,5	76,7
- Servicios a edificios y actividades de jardinería	3,3	9,7	17,2	14,0	55,8
- Actividades administrativas de oficina y otras actividades auxiliares a las empresas	16,5	15,0	16,3	13,7	38,5
Actividades artísticas, recreativas y de entrenamiento					
- Actividades de creación, artísticas y espectáculos	29,2	32,4	21,0	11,0	6,4
- Actividades de bibliotecas, archivos, museos y otras actividades culturales	3,9	12,4	30,1	32,6	21,1
- Actividades de juegos de azar y apuestas	2,7	8,7	11,0	10,9	66,6
- Actividades deportivas, recreativas y de entretenimiento	6,1	17,0	23,6	29,1	24,1
Otros servicios					
- Reparación de ordenadores, efectos personales y artículos de uso doméstico	24,2	33,6	14,3	8,9	18,9
- Otros servicios personales	13,6	46,0	20,4	11,5	8,5
TOTAL	10,2	17,3	18,7	17,1	36,8

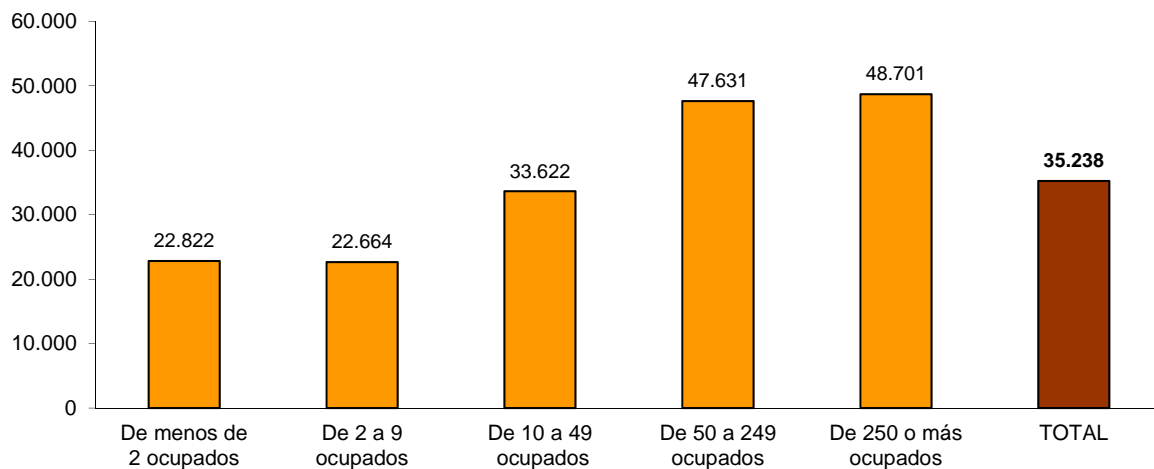
(1) For confidentiality reasons, they are grouped in the previous section

Size of the company and productivity

In medium and large sized companies (with 50 or more employees), productivity surpassed 47,000 euros in 2016.

On the contrary, companies with less than 10 employees recorded lower productivity, with 22,822 euros for companies with fewer than two employees and 22,664 euros for those with two to nine employees.

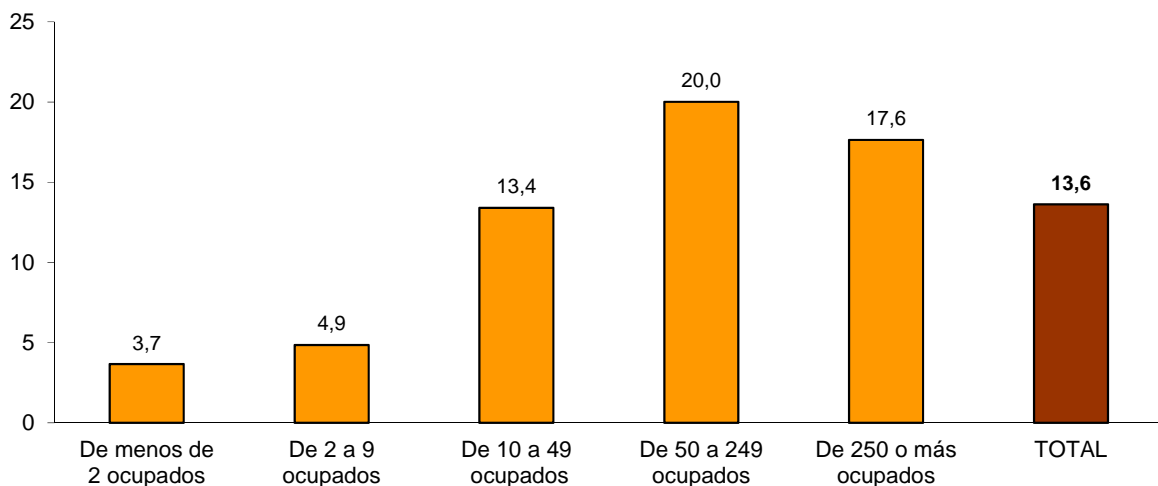
Productivity (in euros) in the Services sector by size of the company. Year 2016



Company size and sales outside Spain

Medium and large sized services companies were those with the greatest propensity to export in 2016, with 17.6% of their turnover destined abroad in those companies with 250 or more employees and 20.0% in the case of those with 50 to 249 employees.

Percentage of exports in the Services sector compared to the total turnover by size of the company. Year 2016



Investment in tangible assets

Investment in tangible assets carried out by the services sector amounted to 30,443 million euros in 2016. More than a quarter came from companies of *Transport and storage*.

Investment accounted for 14.6% of the value added of the sector. This percentage ranged from 5.0% for *Professional, scientific and technical activities* and 48.6% for *Real estate activities*.

Investment in tangible assets by sections of activity. Year 2016

División de actividad	Millones de euros	% sobre el total	Inversión/ Valor añadido (%)
Transporte y almacenamiento	8.147	26,8	18,5
Hostelería	2.783	9,1	10,2
Información y comunicaciones	4.393	14,4	13,3
Actividades inmobiliarias	6.853	22,5	48,6
Actividades profesionales, científicas y técnicas	1.998	6,6	5,0
Actividades administrativas y servicios auxiliares	4.546	14,9	13,8
Actividades artísticas, recreativas y de entrenamiento	1.352	4,4	11,0
Otros servicios	370	1,2	8,3
TOTAL	30.443	100,0	14,6

Methodological note

Second year of implementation of the integration project of the structural business statistics

The National Statistics Institute annually prepares, for the **Industry, Trade and Service sectors**, the structural business statistics. These statistics are governed by Regulation 295/2008 of the Council and the European Parliament whose objective is to provide information on the main economic characteristics of the companies, such as people employed, turnover and other incomes, purchases and consumption, personnel expenditure, tax and investment.

Until the reference year 2014 included, the INE structural business statistics were compiled, according to the different sectors under study, through separate processes and with different collection and publication schedules.

From the reference year 2015, the implementation of the *Integration Project of the Structural Business Statistics*⁷ started, with the aim to standardise and improve the production process of these operations, the statistical results and the dissemination of information. *This project* has been developed over two years (2015 and 2016) and has meant a major reform of these operations.

Denomination until the reference year 2014	New denomination since the reference year 2015
Industrial Companies Survey	Structural Business Statistics: Industrial Sector
Annual Trade Survey	Structural Business Statistics: Trade Sector
Annual Services Survey	Structural Business Statistics: Services sector

The reform has introduced, among other aspects, the following improvements:

As of the **reference year 2015**:

- Use of practically uniform questionnaires for the three sectors under study, and adapted, in the case of legal person companies, to the standard models of the Annual Accounts. In addition, the collection of information is already carried out in an integrated and simultaneous manner for the three sectors under study.
- New dissemination plan, uniform for the three operations, which facilitates the comparison of the statistical results of the different sectors.

As of the **reference year 2016**:

- More efficient sample designs in order to reduce the burden on the respondents and improve the use of administrative registers.

⁷ The *Integration Project of the Structural Business Statistics* was presented to the High Council on Statistics and was approved in the Permanent Commission meeting held on 18 February 2016.

- Methodological improvements relating to the treatment of companies that enter or leave the target population during the reference year, as well as the imputation of lack of response. It has also improved the estimate of variables related to employment using administrative sources.
- The new sampling designs and the simultaneous organisation of the collection of the three sectors under study allow to establish two different moments for the dissemination of the results:
 - *Preliminary results*, using information from the 'main sample' collected up to the end of September of the year t+1. This sample allows to provide national results with sufficient quality for a first level of disaggregation by activity (at least up to three digits of the CNAE-2009 for the industry and trade sectors, and up to two digits for the services sector). The *2016 Preliminary Results* of the Industrial Sector also include information by Autonomous Communities.
 - *Final results*, based on the 'complete sample' (main and complementary, the latter collected until December of the year t+1). National results reach the highest level of detail by activities (up to four digits of the CNAE-2009), as required by the Community Regulation, and regional results are presented by activities. These detailed results allow us to meet the requirements of other more specialized users.

All these measures, which have contributed to the uniformity, improvement and optimisation of the production process of these operations, also make it possible to meet the demand of users interested in making comparisons between the different sectors.

Turnover and personnel employed by sections of activity. Year 2016 Industrial Sector, Trade Sector and Services Sector

Sección de actividad	Cifra de negocios		Personal ocupado (media anual)	
	Millones de euros	% sobre el total	Miles de personas	% sobre el total
Sector Industrial	570.537	32,9	2.074,9	18,7
B Industrias extractivas	3.384	0,2	20,3	0,2
C Industria manufacturera	464.731	26,8	1.847,6	16,6
D Suministro de energía eléctrica, gas, vapor y aire acondicionado	83.276	4,8	40,9	0,4
E Suministro de agua, actividades de saneamiento, gestión de residuos y descontaminación	19.146	1,1	166,2	1,5
Sector Comercio				
G Comercio al por mayor y al por menor; reparación de vehículos de motor y motocicletas	705.276	40,6	3.131,6	28,2
Sector Servicios	460.350	26,5	5.912,6	53,2
H Transporte y almacenamiento	102.910	5,9	844,4	7,6
I Hostelería	63.155	3,6	1.359,8	12,2
J Información y comunicaciones	79.380	4,6	462,8	4,2
L Actividades inmobiliarias	25.744	1,5	226,5	2,0
M Actividades profesionales, científicas y técnicas	84.080	4,8	1.014,9	9,1
N Actividades administrativas y servicios auxiliares	67.800	3,9	1.383,6	12,4
R Actividades artísticas, recreativas y de entrenamiento	28.347	1,6	314,4	2,8
S Otros servicios (excepto actividades asociativas)	8.934	0,5	306,3	2,8
TOTAL	1.736.162	100,0	11.119,0	100,0

Brief description of the statistical operation

Structural Business Statistics: Services Sector (formerly Annual Services Survey), is an annual structural survey, aimed at companies, both legal and natural persons, whose main activity is described in the sections H, I, J, L, M, N, R and divisions 95 and 96 of section S of CNAE-2009. Therefore, this includes the activities of transport and storage, accommodation, information and communications, real estate activities, professional, scientific and technical activities, administrative and support service activities, arts, entertainment and recreation and repair of computers and personal and household goods and other personal services (with the exception of the activities of membership organisations, Division 94).

This operation provides information on the main structural features and economic variables of companies in the sector through a wide range of variables relating to the personnel employed, turnover and other incomes, purchases and consumption, personnel expenses, taxes and investments. The statistics includes economic aggregates such as the value of production and gross value added, as well as main indicators.

In order to reduce the statistical burden on companies, since 2012 the UFAES project (Use of Administrative Sources for Economic Surveys) has been implemented. Through this, 23% of the sample selected for the services and trade sectors is estimated on the basis of administrative data, thus, the number of companies required to complete the questionnaires has been reduced by approximately 18,000 units.

For more details on the characteristics and methodology of this operation, the following documentation can be viewed on the INE website:

- *Standardised methodological report:*
<http://www.ine.es/dynt3/metadatos/es/RespuestaDatos.html?oper=130>
- *Methodology of the Structural Business Statistics: Industrial Sector, Trade Sector, Services Sector (from 2015).* This document presents, in a joint and uniform way for the three sectors under study, the principal methodological lines, concepts and definitions. It should be noted that, even though many of the technical aspects of the three operations have been standardised, some of the features or specific aspects of each sector have been maintained, issues which have been duly noted and explained in the Methodology:
http://www.ine.es/dyngs/INEbase/es/operacion.htm?c=Estadistica_C&cid=1254736176865&menu=metodologia&idp=1254735576778

For further information see **INEbase:** www.ine.es/en/ Twitter: [@es_ine](https://twitter.com/es_ine)

All press releases at: www.ine.es/en/prensa/prensa_en.htm

Press office: Telephone numbers: (+34) 91 583 93 63 /94 08 – gprensa@ine.es

Information Area: Telephone number: (+34) 91 583 91 00 – www.ine.es/infoine/?L=1
