

1 August 2014

**Structure and dynamism of the fabric business in Spain
Central Companies Directory (CCD) at 1 January 2014**

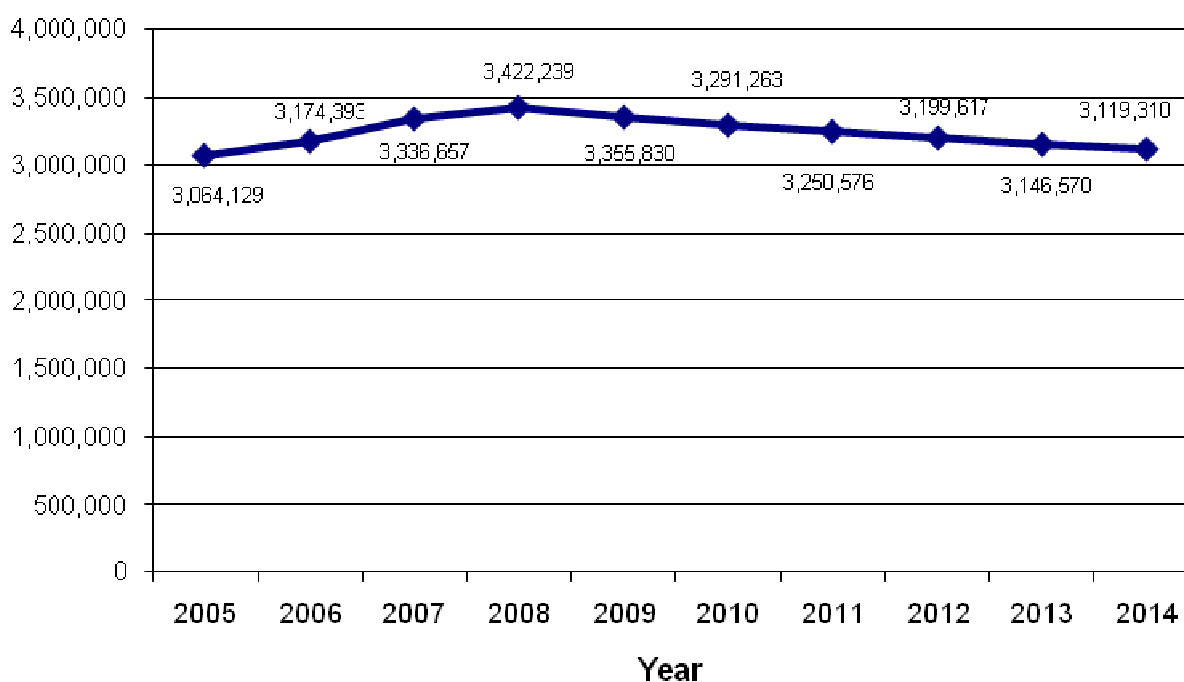
The number of active companies decreases 0.9% in 2013, standing at 3.12 million

14.3% of the active companies are 19 years old or over, whereas 18.0% are less than two years old

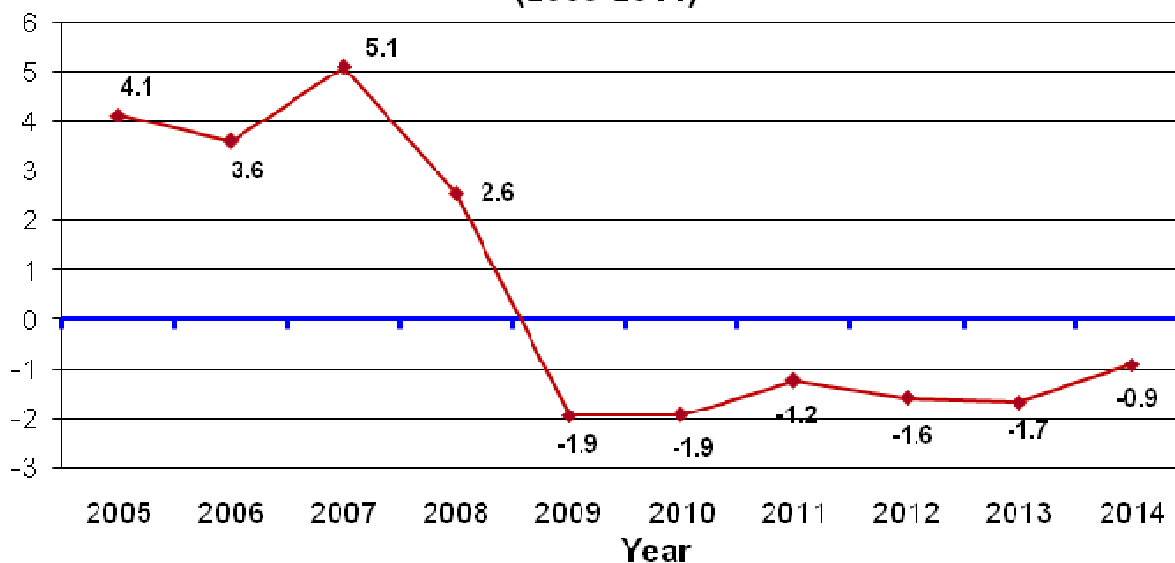
The number of active companies decreased 0.9% during 2013, standing at 3,119,310, according to the latest update of the Central Companies Directory (CCD) at 1 January 2014.

This was the **sixth consecutive year with a decrease in the number of active companies.**

Companies population evolution (2005-2014)



**Number of active companies (interannual variation rates)
(2005-2014)**



Active companies by economic sector

The sector of *Services, excluding Trade* continued to carry the greatest weight in the corporate population structure. At 1 January 2014, it represented 56.2% of the total.

This sector, that registered 1,751,903 active companies, had a 0.2% increase as compared to the previous year. The sector included all those companies dedicated to accommodation, transport and storage, information and communications, financial and insurance activities, real estate, professional, scientific and technical activities, administrative and support services activities, educational, health and social care activities and other types of social activity, including personal services.

The weight of *Trade* was also significant, with 24.3% of the total. This sector included those companies that carried out wholesale and retail trade activities, and trade intermediaries. The population of active companies of the Trade sector decreased 0.9%, up to 758,483, as compared with the previous year.

Finally, the companies of the *Construction* sector represented 13.1% of the total and those of the *Industry* sector did so by 6.4%. In comparison with the previous year, the number of construction companies decreased 4.1% and that of the industrial companies did so by 2.8%.

Active companies by number of employees

From a size perspective, measured by the number of employees, a reduced scale continued to be a feature of Spanish companies.

According to the data at 1 January 2014, more than 1.67 million companies did not hire any employee. This figure accounted for 53.6% of the total. Moreover, other 921,000 companies (29.5% of the total) had between one and two employees.

Adding these two groups, the result is that **83.1% of companies had two or fewer employees.**

Considering only the companies with employees, those employing 20 or more workers represented 4.2% of the total.

The highest percentages of small companies were registered in *Rest of services* (84.5% had two or fewer employees) and *Trade* (82.6%).

Conversely, the weight of large companies was concentrated in the industrial sector, where 7.4% of the total employed 20 or more persons.

Active companies by economic sector, by employee bracket.

Data at 1 January 2014

	Total	Industry	Construction	Trade	Rest of services
TOTAL	3,119,310	200,835	408,089	758,483	1,751,903
Without employees	1,672,483	77,310	251,288	378,517	965,368
1 to 2 employees	921,000	55,502	101,397	248,369	515,732
3 to 5 employees	284,612	24,867	30,582	79,583	149,580
6 to 9 employees	110,819	14,516	11,919	28,354	56,030
10 to 19 employees	70,226	13,864	7,834	13,598	34,930
20 employees or more	60,170	14,776	5,069	10,062	30,263

Active companies by age

The population of active companies is characterised by a great dynamism, as only 14.3% existed 20 or more years ago.

Conversely, an important presence of young companies can be observed. As a matter of fact, 18.0% did not reach two years as economically active units.

The following table combines this criterion with the activity performed. It can be observed that the distribution by ages is not homogeneous for the different sectors considered.

The Industrial sector registered the greatest proportions of older companies (24.5% are 20 years old or over), whereas the representation of younger companies is higher in activities related to the Services sector, especially in *Accommodation* (24.8% did not reach their second year).

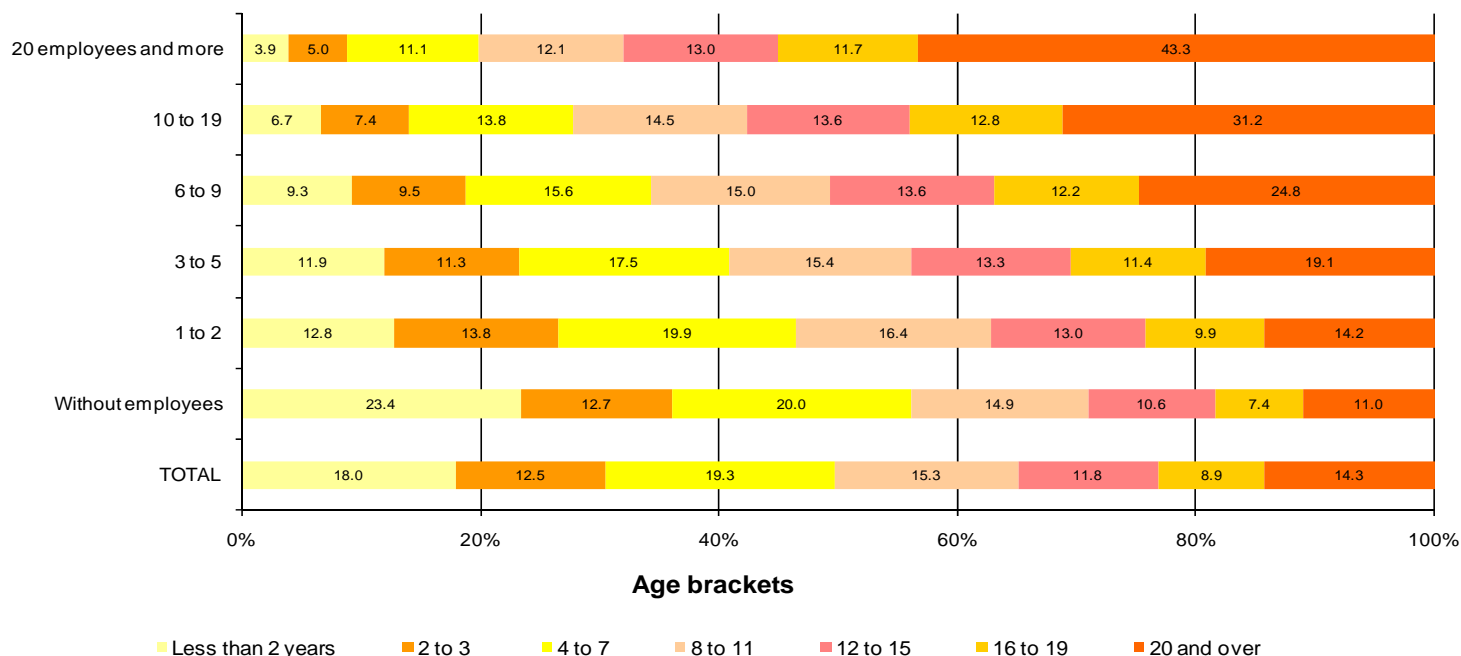
Active companies by economic sector, by age bracket

Data at 1 January 2014

	Total	0 - 1	2 - 3	4-7	8-11	12-15	16 - 19	20 or over
TOTAL	3,119,310	560,525	390,640	601,401	476,916	366,945	277,359	445,524
Industry	200,835	21,334	16,275	36,117	25,901	26,583	25,367	49,258
Construction	408,089	64,068	44,256	93,044	78,069	51,964	37,781	38,907
Trade	758,483	141,265	89,881	121,278	102,367	91,234	74,954	137,504
Transport and storage	196,828	21,949	17,014	31,330	29,254	26,576	26,299	44,406
Accommodation	276,674	68,704	40,523	50,223	36,686	28,487	20,439	31,612
Rest of services	1,278,401	243,205	182,691	269,409	204,639	142,101	92,519	143,837

The following chart combines the seniority of the companies with other basic structural element, as it is the size of the companies measured depending on the employees stratum.

Active companies by size and age bracket



It is shown that the age distribution is related to the size of the companies. Thus, the presence of young companies is relevant considering micro enterprises (23.4% of the companies without employees, between their first and second year), whereas bigger companies registered the greatest representation of the veteran companies (43.3% of the companies of 20 employees or more are 20 years old or over).

Company registrations and delistings

Considering evolution over the past year, it was worth noting that 343,491 companies began the exercise of economic activities during 2013.

In turn, 377,295 companies ceased all their activities.

79.4% of the economic units registered in 2013 were already active companies the previous year.

Companies registered by demographic category

Data at 1 January 2014

Demographic category	Total	Percentage over the total
TOTAL	3,496,605	100.0
Registrations	343,491	9.8
Remaining in business	2,775,819	79.4
Delistings	377,295	10.8

The economic activities that created more companies in net terms in 2013 were *Administrative office activities* (6,444) and *Education activities* (3,837).

Sectors with most creation of net companies

Data at 1 January 2014

CNAE 2009 Divisions	Registrations	Delistings	Net balance
Administrative office activities and other business support activities	17,386	10,942	6,444
Education	12,804	8,967	3,837
Real estate activities	12,472	9,730	2,742
Other personal services activities	12,763	10,619	2,144

In turn, the activities in which most companies ceased their activity in net terms during 2013 were *Legal and accounting activities* (-11,176) and *Building construction* (-9,749).

Sectors with the highest net number of companies that have ceased their activity

Data at 1 January 2014

CNAE 2009 Divisions	Registrations	Delistings	Net balance
Legal and accounting activities	8,497	19,673	-11,176
Building construction	21,898	31,647	-9,749
Architectural and engineering services; technical testing and analysis	10,357	18,981	-8,624
Land transport and transport via pipelines	10,493	18,957	-8,464

Active companies by Autonomous Community

Cataluña accounted for the most active companies at 1 January 2014, with 18.5% of the total. It was followed by Comunidad de Madrid (15.9%) and Andalucía (15.0%).

Active companies according to activity sector, by Autonomous Community and City.

Data at 1 January 2014

	Total	Industry	Construction	Trade	Rest of services
TOTAL	3,119,310	200,835	408,089	758,483	1,751,903
Andalucía	468,930	27,100	52,694	133,001	256,135
Aragón	88,114	6,734	12,711	20,066	48,603
Asturias, Principado de	66,342	3,551	8,441	15,414	38,936
Balears, Illes	84,270	4,408	14,020	16,632	49,210
Canarias	128,518	4,996	14,001	32,408	77,113
Cantabria	36,698	2,075	5,447	8,487	20,689
Castilla y León	159,473	11,844	24,543	40,129	82,957
Castilla-La Mancha	123,095	12,272	19,436	33,391	57,996
Cataluña	576,565	37,164	73,916	129,371	336,114
Comunitat Valenciana	330,855	24,545	41,680	86,331	178,299
Extremadura	62,929	4,834	8,466	19,158	30,471
Galicia	191,745	12,676	29,475	49,542	100,052
Madrid, Comunidad de	494,509	23,152	59,114	97,620	314,623
Murcia, Región de	86,782	6,634	12,052	24,326	43,770
Navarra, Comunidad Foral de	41,582	3,858	6,146	9,692	21,886
País Vasco	149,245	12,401	22,168	34,230	80,446
Rioja, La	22,314	2,445	3,128	5,499	11,242
Ceuta	3,590	83	325	1,449	1,733
Melilla	3,754	63	326	1,737	1,628

Active premises by Autonomous Community

Active companies registered in the CCD carried out their activities in 3,527,412 premises located throughout the national territory, according to the following distribution by Autonomous Community and economic sector.

Active premises according to economic sector, by Autonomous Community and City.

Data at 1 January 2014

	Total	Industry	Construction	Trade	Rest of services
TOTAL	3,527,412	230,159	438,230	922,502	1,936,521
Andalucía	537,253	32,353	58,107	160,498	286,295
Aragón	101,156	7,833	13,853	24,988	54,482
Asturias, Principado de	75,466	4,145	9,097	19,179	43,045
Balears, Illes	97,079	5,062	15,352	20,846	55,819
Canarias	153,113	6,073	15,777	42,675	88,588
Cantabria	41,626	2,372	6,098	10,297	22,859
Castilla y León	183,895	14,360	26,855	48,919	93,761
Castilla-La Mancha	142,469	16,260	20,899	39,954	65,356
Cataluña	648,065	42,422	80,761	158,086	366,796
Comunitat Valenciana	375,210	28,051	45,000	104,765	197,394
Extremadura	72,390	5,942	9,204	22,797	34,447
Galicia	216,107	14,364	31,004	60,319	110,420
Madrid, Comunidad de	540,399	22,604	59,878	117,793	340,124
Murcia, Región de	98,021	7,827	12,880	28,799	48,515
Navarra, Comunidad Foral de	47,192	4,597	6,959	11,538	24,098
País Vasco	163,819	12,918	22,128	40,704	88,069
Rioja, La	25,663	2,788	3,607	6,637	12,631
Ceuta	4,224	106	387	1,733	1,998
Melilla	4,265	82	384	1,975	1,824

Methodological note

The Central Companies Directory (CCD) includes, in a single information system, all Spanish companies and their local units located within Spain. It is a key infrastructure tool which enables the carrying out and coordinating of the research system aimed at production units.

In order to meet this requirement, the CCD must be updated as necessary and units must be shown with reliable identification, localisation and classification data.

The CCD is compiled and maintained over time from the primary data originating from a range of sources of an administrative and statistical point of origin, submitting all this information to a sophisticated process of filtering, alignment and integration for the purpose of achieving total national coverage.

The CCD is a project that has been carried out by the INE since 1989, and provides information relating to the population of companies with a presence in Spain, as well as local units where said companies carry out their activities.

Other objectives are:

–To provide structural data on the number of companies and premises existing in Spain, classified by main economic activity, employee bracket, legal condition and geographical location.

–To offer data on temporary evolution of the companies as concerns new companies, companies remaining in business and companies that have closed down, detected in the year of updating the Directory, and their classification by the usual variables.

–To satisfy demands for information required by international bodies, in particular, by the Statistical Office of the European Communities (Eurostat).