

31 July 2014

**Structure and dynamism of the business network in Spain  
Central Companies Directory (CCD) at 1 January 2015**

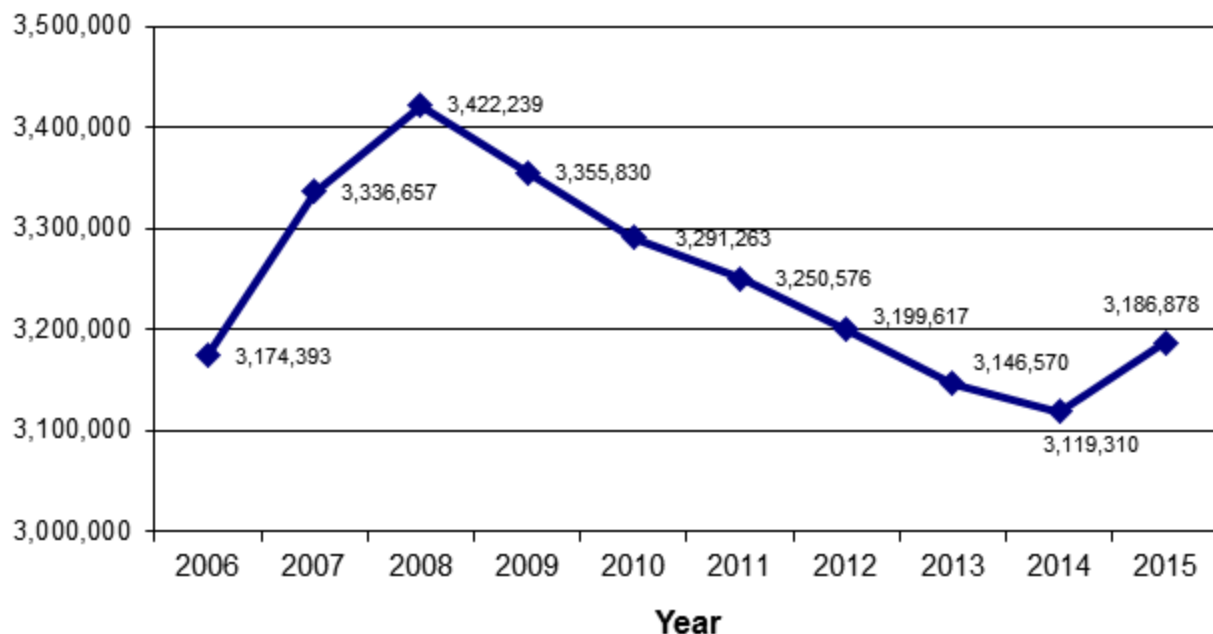
**The number of active companies increases 2.2% in 2014, standing at 3.19 million**

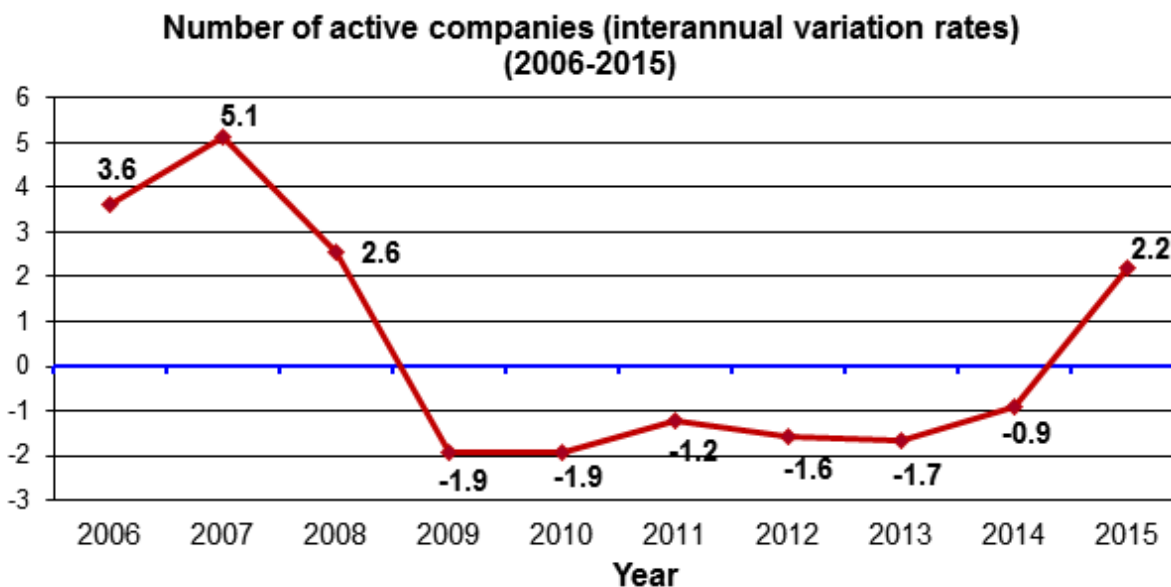
**15.0% of the active companies are 20 years old or over, whereas 19.7% are less than two years old**

The number of active companies increased 2.2% during 2014, standing at 3,186,878, according to the latest update of the Central Companies Directory (CCD) at 1 January 2015.

This was the first increase in the number of active companies after six consecutive year decreasing.

**Companies population evolution (2006-2015)**





### Active companies by economic sector

The sector of *Other Services* continued to carry the greatest weight in the corporate population structure. At 1 January 2015, it represented 57.1% of the total.

This sector, that registered 1,819,095 active companies, had a 3.9% increase as compared to the previous year. The sector included all those companies dedicated to accommodation, transport and storage, information and communications, financial and insurance activities, real estate, professional, scientific and technical activities, administrative and support services activities, educational, health and social care activities and other types of social activity, including personal services.

The weight of *Trade* was also significant, with 24.0% of the total. This sector included those companies that carried out wholesale and retail trade activities, and trade intermediaries. The population of active companies of the *Trade* sector increased 0.7%, up to 763,930, as compared with the previous year.

Finally, the companies of the *Construction* sector represented 12.7% of the total and those of the *Industry* sector did so by 6.2%. In comparison with the previous year, the number of construction companies decreased 0.5% and that of the industrial companies did so by 1.4%.

### Active companies by number of employees

From a size perspective, measured by the number of employees, a reduced scale continued to be a feature of Spanish companies.

According to the data at 1 January 2015, more than 1.75 million companies did not hire any employee. This figure accounted for 55.0% of the total. Moreover, other 899,802 companies (28.2% of the total) had between one and two employees.

Adding these two groups, the result is that 83.3% of companies had two or fewer employees.

Considering only the companies with employees, those employing 20 or more workers represented 4.3% of the total.

The highest percentages of small companies were registered in *Other services* (84.6% had two or fewer employees) and *Trade* (82.7%).

Conversely, the weight of large companies was concentrated in the industrial sector, where 7.6% of the total employed 20 or more persons.

### Active companies by economic sector, by employee bracket

Data at 1 January 2015

	Total	Industry	Construction	Trade	Other services
<b>TOTAL</b>	<b>3,186,878</b>	<b>198,004</b>	<b>405,849</b>	<b>763,930</b>	<b>1,819,095</b>
No employees	1,754,002	78,412	258,453	389,121	1,028,016
1 to 2 employees	899,802	52,561	94,380	242,324	510,537
3 to 5 employees	287,430	24,017	29,041	79,875	154,497
6 to 9 employees	112,527	14,210	11,318	28,587	58,412
10 to 19 employees	71,518	13,839	7,685	13,740	36,254
20 or more employees	61,599	14,965	4,972	10,283	31,379

### Active companies by age

The population of active companies is characterised by a great dynamism, as only 15.0% existed 20 or more years ago.

Conversely, an important presence of young companies can be observed. As a matter of fact, 19.7% did not reach two years as economically active units.

The following table combines this criterion with the activity performed. It can be observed that the distribution by ages is not homogeneous for the different sectors considered.

The *Industrial* sector registered the greatest proportions of older companies (26.2% are 20 years old or over), whereas the representation of younger companies is higher in activities related to the *Services* sector, especially in *Accommodation* (25.4% did not reach their second year).

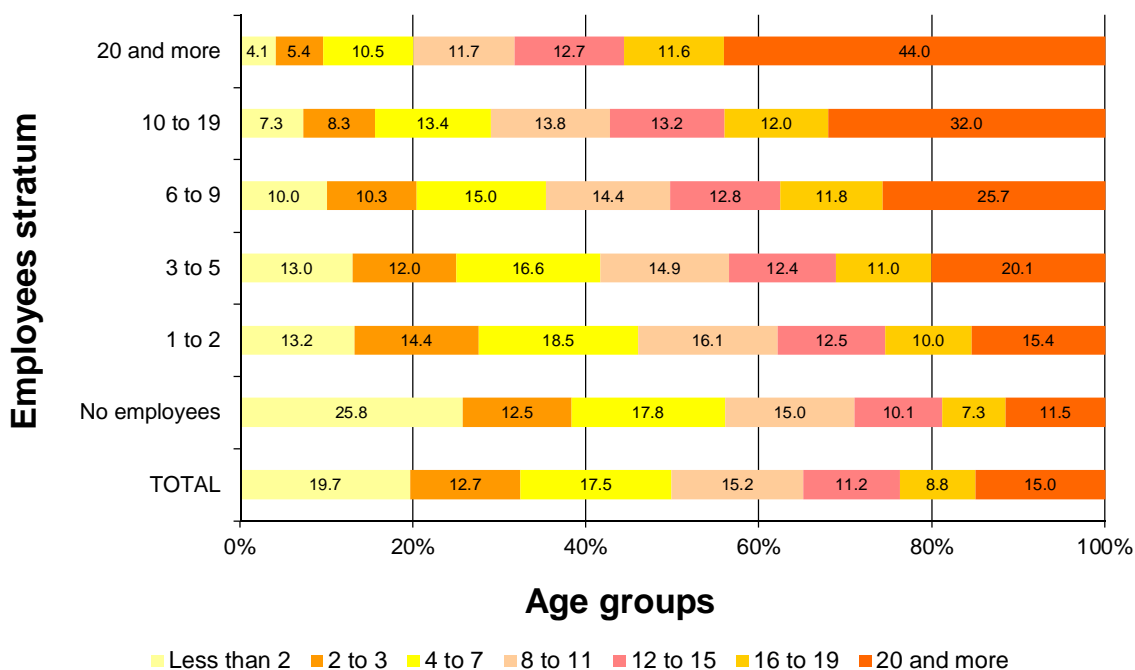
### Active companies by economic sector, by age bracket

Data at 1 January 2015

	Total	0 - 1	2 - 3	4-7	8-11	12-15	16 - 19	20 or more
<b>TOTAL</b>	<b>3.186.878</b>	<b>627.366</b>	<b>404.097</b>	<b>558.874</b>	<b>483.976</b>	<b>356.760</b>	<b>278.852</b>	<b>476.953</b>
Industry	198.004	23.323	16.160	32.740	25.292	24.597	24.018	51.874
Construction	405.849	74.851	43.131	75.646	79.293	51.417	36.651	44.860
Trade	763.930	150.909	94.345	117.361	97.372	86.405	73.018	144.520
Transport/Storage	194.201	23.240	17.554	27.168	29.874	24.820	25.861	45.684
Accommodation	276.412	70.125	42.229	48.033	35.271	27.358	20.393	33.003
Other services	1.348.482	284.918	190.678	257.926	216.874	142.163	98.911	157.012

The following chart combines the seniority of the companies with other basic structural element, as it is the size of the companies measured depending on the employees' stratum.

### Active companies by size and age group



It is shown that the age distribution is related to the size of the companies. Thus, the presence of young companies is relevant considering micro enterprises (25.8% of the companies without employees, between their first and second year), whereas bigger companies registered the greatest representation of the veteran companies (44.0% of the companies of 20 employees or more are 20 years old or over).

### Company registrations and delistings

Considering evolution over the past year, it was worth noting that 399,358 companies began the exercise of economic activities during 2014.

In turn, 329,304 companies ceased all their activities.

79.3% of the economic units registered in 2015 were already active companies the previous year.

### Companies registered according to demographic category

Data at 1 January 2015

Demographic category	Total	Percentage over the total
TOTAL	3.516.182	100,0
News	399.358	11,3
Remaining in business	2.787.520	79,3
Delistings	329.304	9,4

The economic activities that created more companies in net terms in 2014 were *Administrative office activities* (8,912) and *Human health activities* (7,882).

### Sectors with most net creation of companies

Data at 1 January 2015

CNAE 2009 divisions	New	Delistings	Net balance
Administrative office activities and other business support activities	21.130	12.218	8.912
Human health and social work activities	15.708	7.826	7.882
Education	16.044	9.259	6.785

In turn, the activities in which most companies ceased their activity in net terms were *Land transport* (-1,696) and *Building construction* (-1,204).

### Sectors with most net number of companies that have discontinued their activity

Data at 1 January 2015

CNAE 2009 divisions	New	Delistings	Net balance
Land and via pipelines transport	11.409	13.105	-1.696
Building construction	26.910	28.114	-1.204
Civil engineering	1.172	1.923	-751

### Active companies by Autonomous Community

Cataluña accounted for the most active companies at 1 January 2015, with 18.3% of the total. It was followed by Comunidad de Madrid (16.0%) and Andalucía (15.1%).

### Active companies, according to economic sector by Autonomous Community and City

Data at 1 January 2015

	Total	Industry	Construction	Trade	Other services
<b>TOTAL</b>	<b>3.186.878</b>	<b>198.004</b>	<b>405.849</b>	<b>763.930</b>	<b>1.819.095</b>
Andalucía	480.094	26.826	51.699	134.485	267.084
Aragón	89.873	6.677	12.596	20.131	50.469
Asturias, Principado de	67.451	3.496	8.435	15.375	40.145
Balears, Illes	87.111	4.413	14.485	16.672	51.541
Canarias	132.857	5.014	14.230	32.856	80.757
Cantabria	37.332	2.071	5.413	8.458	21.390
Castilla y León	161.119	11.672	24.295	40.022	85.130
Castilla-La Mancha	125.786	12.173	19.400	33.755	60.458
Cataluña	584.369	36.383	72.857	128.622	346.507
Comunitat Valenciana	339.533	24.243	41.407	87.783	186.100
Extremadura	64.475	4.797	8.438	19.398	31.842
Galicia	195.595	12.548	29.742	49.775	103.530
Madrid, Comunidad de	508.612	22.608	59.661	98.443	327.900
Murcia, Región de	90.031	6.681	12.194	25.078	46.078
Navarra, Comunidad Foral de	43.131	3.850	6.122	9.830	23.329
País Vasco	148.575	11.995	21.163	34.274	81.143
Rioja, La	23.083	2.401	3.073	5.516	12.093
Ceuta	3.749	81	309	1.506	1.853
Melilla	4.102	75	330	1.951	1.746

### Active premises by Autonomous Community

Active companies registered in the CCD carried out their activities in 3,598,795 premises located throughout the national territory, according to the following distribution by Autonomous Community and economic sector.

55.8% of the premises correspond to the *Other Services* sector.

By Autonomous Community, Cataluña accounted for 18.3% of the premises, Comunidad de Madrid 15.4% and Andalucía 15.2%.

### Active premises by economic sector, by Autonomous Community and City

Data at 1 January 2015

	Total	Industry	Construction	Trade	Other services
<b>TOTAL</b>	<b>3.598.795</b>	<b>227.681</b>	<b>435.759</b>	<b>928.405</b>	<b>2.006.950</b>
Andalucía	548.494	32.023	57.034	161.881	297.556
Aragón	102.900	7.767	13.734	25.019	56.380
Asturias, Principado de	76.754	4.114	9.089	19.119	44.432
Balears, Illes	100.129	5.048	15.851	20.923	58.307
Canarias	157.710	6.137	15.974	43.328	92.271
Cantabria	42.304	2.380	6.049	10.270	23.605
Castilla y León	185.730	14.243	26.597	48.816	96.074
Castilla-La Mancha	144.913	16.021	20.753	40.248	67.891
Cataluña	656.832	41.729	79.631	157.666	377.806
Comunitat Valenciana	384.086	27.823	44.614	106.144	205.505
Extremadura	73.981	5.924	9.169	22.951	35.937
Galicia	220.314	14.253	31.346	60.489	114.226
Madrid, Comunidad de	555.572	22.156	60.610	119.005	353.801
Murcia, Región de	101.514	7.942	13.017	29.598	50.957
Navarra, Comunidad Foral de	48.774	4.589	6.923	11.690	25.572
País Vasco	163.386	12.579	21.102	40.625	89.080
Rioja, La	26.421	2.762	3.505	6.644	13.510
Ceuta	4.370	97	372	1.805	2.096
Melilla	4.611	94	389	2.184	1.944

## Methodological note

The Central Companies Directory (CCD) includes, in a single information system, all Spanish companies and their local units located within Spain. It is a key infrastructure tool which enables the carrying out and coordinating of the research system aimed at production units.

In order to meet this requirement, the CCD must be updated as necessary and units must be shown with reliable identification, localisation and classification data.

The CCD is compiled and maintained over time from the primary data originating from a range of sources of an administrative and statistical point of origin, submitting all this information to a sophisticated process of filtering, alignment and integration for the purpose of achieving total national coverage.

The CCD is a project that has been carried out by the INE since 1989, and provides information relating to the population of companies with a presence in Spain, as well as local units where said companies carry out their activities.

### Other objectives are:

–To provide structural data on the number of companies and premises existing in Spain, classified by main economic activity, employee bracket, legal condition and geographical location.

–To offer data on temporary evolution of the companies as concerns new companies, companies remaining in business and companies that have closed down, detected in the year of updating the Directory, and their classification by the usual variables.

–To satisfy demands for information required by international bodies, in particular, by the Statistical Office of the European Communities (Eurostat).