

## Non-hotel Tourist Accommodation Occupancy Survey December 2024 and Year 2024. Provisional data

### Main results

- Overnight stays in non-hotel tourist accommodation decreased by 3.5% in December compared to the same month in 2023.
- In 2024 as a whole, overnight stays rose by 3.0% compared to 2023.

### More information

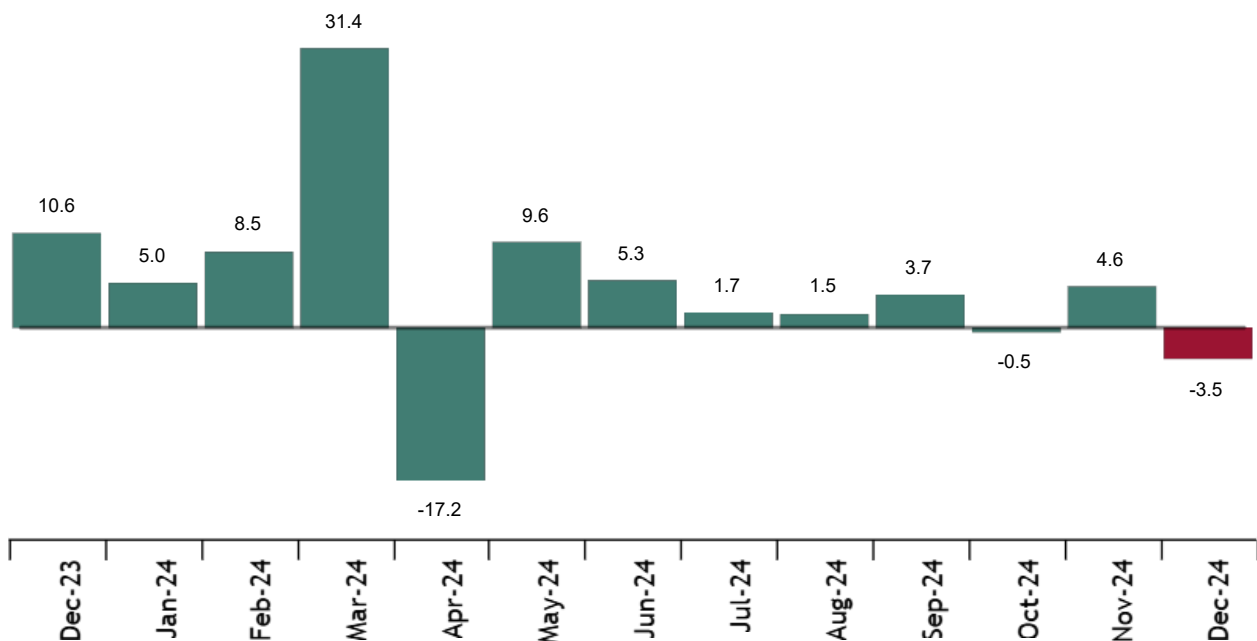
- [Tables annex](#) (includes information on Autonomous Communities, provinces, tourist areas and sites)
- [Detailed results of apartments, campsites, rural tourism and hostels](#)
- [Main indicators by accommodation type / Infographic: tourism indicators](#)
- [Price indices of apartments, campsites and rural tourism](#)
- [Annual summary 2024](#)

Overnight stays in non-hotel tourist accommodation (apartments, campsites, rural tourism accommodation and hostels) exceeded 6.8 million in December with a 3.5% decrease compared with the same month last year. Overnight stays by residents decreased by 7.1% and those by non-residents by 1.2%.

The average stay was 4.4 overnight stays per traveller.

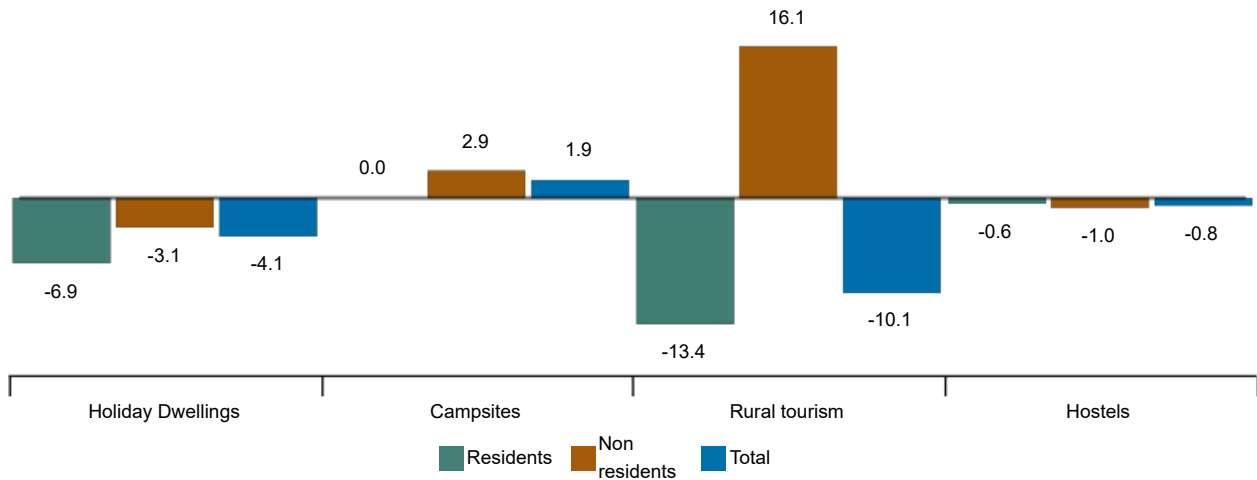
### Annual variation rate for overnight stay

Percentage



**Annual variation rates of overnight stays in non-hotel tourist accommodations**

Percentage



**Apartments**

Overnight stays in tourist apartments declined by 4.1% in December. Resident overnight stays decreased by 6.9%, and those of non-residents by 3.1%.

The average stay decreased by 3.0%, to 5.0 overnight stays per traveller.

In December, 31.7% of the places offered were occupied, 3.4% fewer than in 2023. The occupancy rate by places on the weekend was 35.9%, with an increase of 1.1%.

Non-residents accounted for 73.9% of overnight stays. The United Kingdom was the main market of origin, with 29.6% of the total.

Canarias was the preferred destination for apartments, with more than 2.2 million overnight stays and a decrease of 2.7% compared to December 2023. It also recorded the highest occupancy rate, with 82.1% of the apartments offered.

By tourist areas, Isla de Tenerife was the preferred destination, with 751 thousand overnight stays. Fuerteventura had the highest occupancy rate for apartments, 84.7%. The tourist spots with the highest number of overnight stays were San Bartolomé de Tirajana, Arona and Mogán.

**Campsites**

Overnight stays in campsites increased by 1.9% in December compared to the same month in 2023. Those from residents went unchanged in the annual rate and those from non-residents increased by 2.9%.

In November, 43.7% of the available sites were occupied, an annual increase of 2.5%. The weekend occupancy rate reached 45.7%, an increase of 3.9%. Travellers not resident in Spain accounted for 66.3% of overnight stays. Germany was the main market of origin, with 39.6% of the total.

Comunitat Valenciana was the preferred destination for campsites, with more than 677 million overnight stays, an increase of 0.9% in the annual rate. It also achieved the highest occupancy rate, with 64.6% of campsites offered.

By tourist areas, the Costa Blanca (Alicante) was the preferred destination, with more than 366 thousand overnight stays. This region also had the highest occupancy rate, with 84.0%. The tourist spots with the most overnight stays were Benidorm, Mazarrón and Oliva.

Current press release at: <https://www.ine.es/dyngs/Prensa/en/EOAT1224.htm>

**Rural tourism accommodation**

Overnight stays in rural tourism accommodation decreased by 10.1% in December. Those of residents decreased by 13.4%, while those of non-residents increased by 16.1%.

17.7% of bed-places were occupied, 8.3% fewer than in December 2023. The weekend occupancy rate stood at 30.0%, with a decrease of 3.5%.

Castilla y León was the preferred destination, with more than 162 thousand overnight stays, 11.7% less than in December 2023. Canarias achieved the highest occupancy rate, with 40.2%.

By tourist area, Pirineus was the preferred destination, with more than 44 thousand overnight stays. The Parque Nacional Teide reached the highest occupancy rate with 46.5% of the bed places offered.

**Hostels**

Overnight stays in hostels recorded an annual decrease of 0.8% in December. Resident overnight stays fell by 0.6%, and those of non-residents by 1.0%.

23.4% of the places were occupied, 6.4% more than in December 2023. The weekend occupancy rate reached 30.9%, an increase of 14.7%.

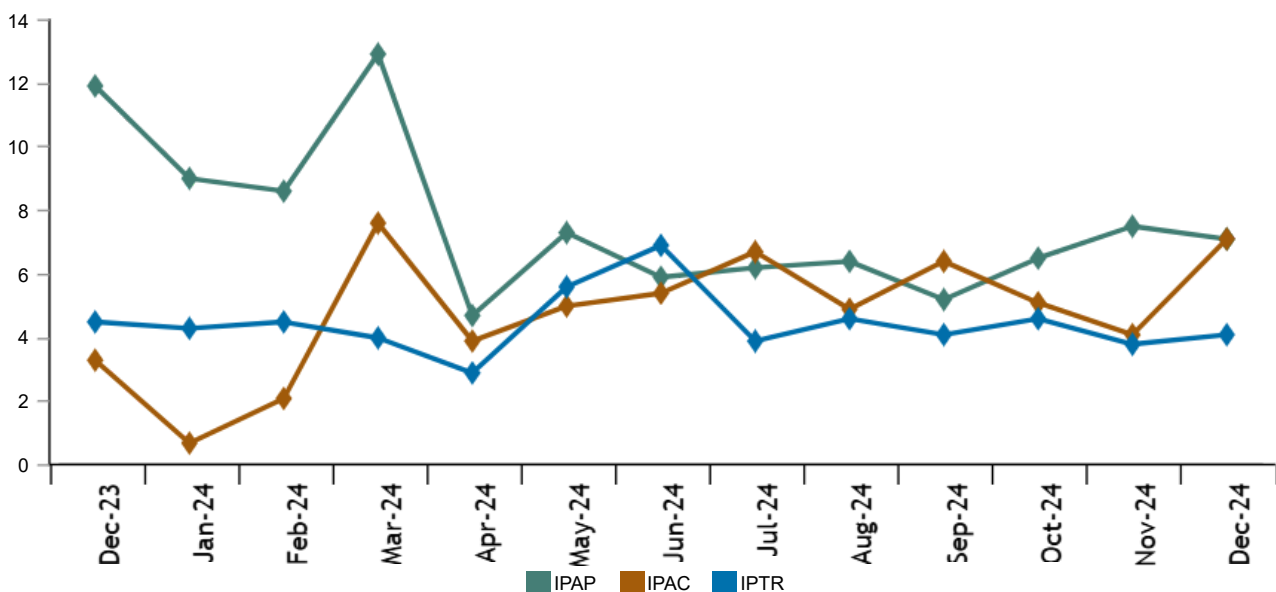
Comunidad de Madrid was the preferred destination, with more than 110 thousand overnight stays. Canarias achieved the highest occupancy rate, with 58.3% of the bed-places offered.

**Price indices**

The Tourist Apartment Price Index (IPAP) rose 7.1% in December compared to the same month in 2023. The Campsite Price Index (CPI) increased by 7.1% and the Rural Tourism Accommodation Price Index (RTAPI) by 4.1%.

**Price index. Annual variation rates**

Percentage



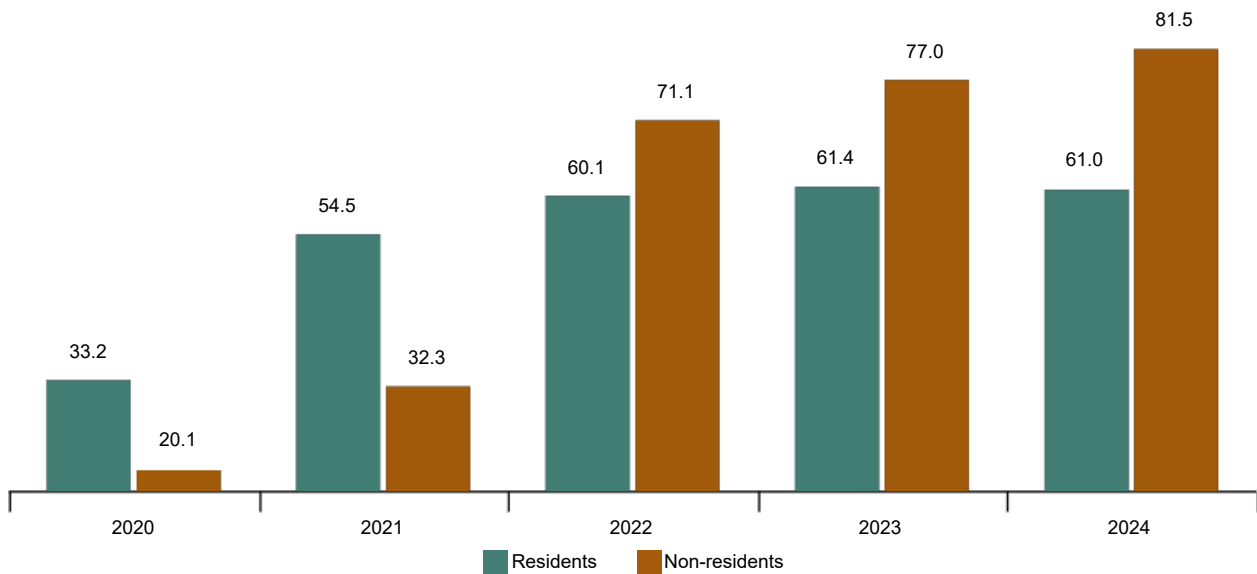
Current press release at: <https://www.ine.es/dyngs/Prensa/en/EOAT1224.htm>

## Results for the whole of 2024

Overnight stays in non-hotel tourist accommodation reached 142.6 million in the whole of 2024, with an increase of 3.0% compared to 2023. Those of residents decreased by 0.5%, while those of non-residents increased by 5.8%.

### Annual overnight stays

Percentage



50.3% of overnight stays were made in 2024 in tourist apartments, 34.5% in campsites, 8.9% in rural tourism accommodation and the remaining 6.3% in hostels.

Overnight stays in tourist apartments increased by 2.2% in 2024. Those of residents decreased by 2.4%, while those of non-residents increased by 4.4%. Canarias was the preferred destination, with more than 25.8 million overnight stays, 3.1% more than in 2023. The United Kingdom consolidated itself as the leading source market for tourist apartments, with 16.2 million overnight stays, 2.7% more than the previous year.

Overnight stays in campsites increased by 4.7% in 2024. Stays by residents increased by 2.1% and those of non-residents by 7.8%. Cataluña was the preferred destination, with 20.4 million overnight stays, 7.1% more than in 2023. Germany was the main source market, with 23.6% of the total overnight stays, 10.7% more.

Overnight stays in rural tourism accommodation increased by 0.4% in 2024. Those from residents declined by 3.6% and those from non-residents increased by 10.7%. Castilla y León was the preferred destination, with 1.9 million overnight stays, 1.1% more than in 2023.

Overnight stays in hostels increased by 3.9% in 2024. Those of residents decreased by 0.6%, while those of non-residents increased by 8.4%. Comunidad de Madrid was the main destination, with 1.4 million overnight stays.

## Price indices in non-hotel tourist accommodation

In 2024, the Tourist Apartment Price Index (IPAP) registered an average increase of 7.1%.

The Campsite Price Index (CPI) rose by 5.2% and the Rural Tourism Accommodation Price Index (RTAPI) had an average increase of 4.5%.

## Data revisions and updates

Coinciding with today's publication, the INE has updated the data for December 2023 in the Holiday Dwelling Price Index (HDPI), the Tourist Campsite Price Index (TCPI) and the Rural Tourism Accommodation Price Index (RTAPI). All of the results of these operations are available at: [Holiday Dwelling Occupancy Survey](#), [Campsite Occupancy Survey](#), [Rural Tourism Accommodation Occupancy Survey](#), [Hostels Occupancy Survey](#), [Holiday Dwelling Price Index](#), [Campsite Price Index](#) and [Rural Tourism Accommodation Price Index](#).

## Methodological note

The **Holiday Dwelling Occupancy Survey** makes it possible to ascertain a series of variables of this type of accommodation within the tourist sector, from the point of view of both supply and demand.

The **Holiday Dwelling Price Index** measures the monthly evolution of the prices offered by these establishments to their clients.

More information on the [methodology](#) and the [standardised methodological report](#).

The **Campsite Occupancy Survey** makes it possible to ascertain a series of variables of this type of accommodation within the tourist sector, from the point of view of both supply and demand.

The **Campsite Price Index** measures the monthly evolution of the prices offered by these establishments to their clients.

More information on the [methodology](#) and the [standardised methodological report](#).

The **Rural Tourism Accommodation Occupancy Survey** makes it possible to ascertain a series of variables of this type of accommodation within the tourist sector, from the point of view of both supply and demand.

The **Rural Tourism Accommodation Price Index** measures the monthly evolution of the prices offered by these establishments to their clients.

More information on the [methodology](#) and the [standardised methodological report](#).

The **Hostels Occupancy Survey** makes it possible to ascertain a series of variables of this type of accommodation within the tourist sector, from the point of view of both supply and demand.

More information on the [methodology](#) and the [standardised methodological report](#).

INE statistics are produced in accordance with the Code of Good Practice for European Statistics. More information on [Quality at INE](#) and [Code of Best Practices](#).

For further information see [INE base](#)

Official INE account on [X](#) @es\_ine

All press releases at: [www.ine.es/en/prensa/prensa\\_en.htm](http://www.ine.es/en/prensa/prensa_en.htm)

 Press office: (+34) 91 583 93 63 / 94 08 – [gprensa@ine.es](mailto:gprensa@ine.es)

 Information area: (+34) 91 583 91 00 – [www.ine.es/infoine/?L=1](http://www.ine.es/infoine/?L=1)