

Services Sector Activity Indicators (SSAI)

February 2026. Provisional data

Main results

- The annual variation of the Market Services Sector turnover index was 1.9% in the calendar and seasonally adjusted series.
- In February, the monthly rate was 0.2% if seasonal and calendar effects are removed.

More information

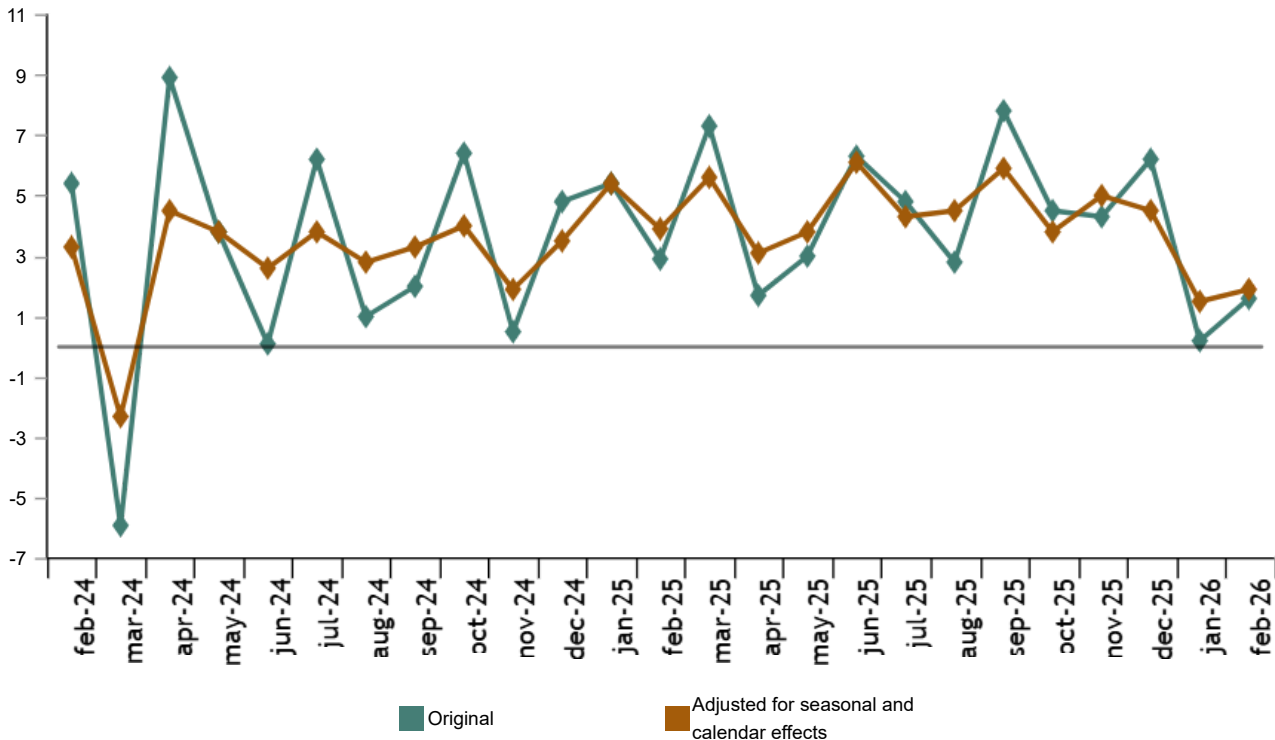
- [Tables annex](#) (includes information by autonomous communities and original and adjusted series by sectors)
- [Detailed results](#) (monthly and annual data)

The general index of the turnover for the Market Services Sector, after adjusting for seasonal and calendar effects, experienced a variation of 1.9% in February compared to the same month of 2025. This rate was four tenths higher than that recorded in January.

The original series presented an annual variation of 1.6%, which was 1.4 points above that registered in January.

General index of turnover for the Market Services Sector

Annual Rate. Percentage



Current press release at: <https://www.ine.es/dyngs/Prensa/en/IAS0226.htm>

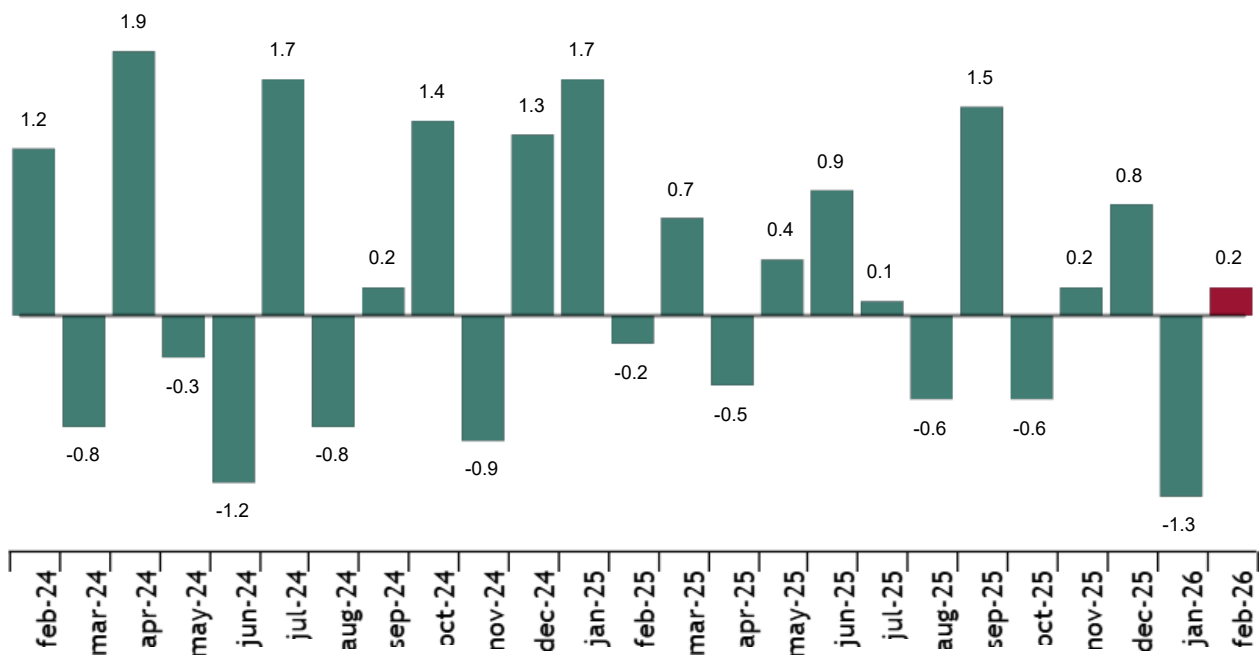
Annual rates in Turnover index for the Market Services Sector: General and by sector. February 2026
Percentage

	Original index	Seasonally adjusted index
	Annual rate (%)	Annual rate (%)
GENERAL INDEX	1.6	1.9
1. TRADE	0.8	0.9
2. OTHER SERVICES	2.9	3.1

Monthly trend in turnover for the Market Services Sector

After adjusting for seasonal and calendar effects, the monthly variation of the general index of turnover for the Market Services Sector between February and January was 0.2%. This rate was 1.5 points higher than that observed in January.

General index of the turnover for the Market Services Sector. Seasonally and calendar adjusted
Monthly rate. Percentage



Current press release at: <https://www.ine.es/dyngs/Prensa/en/IAS02226.htm>

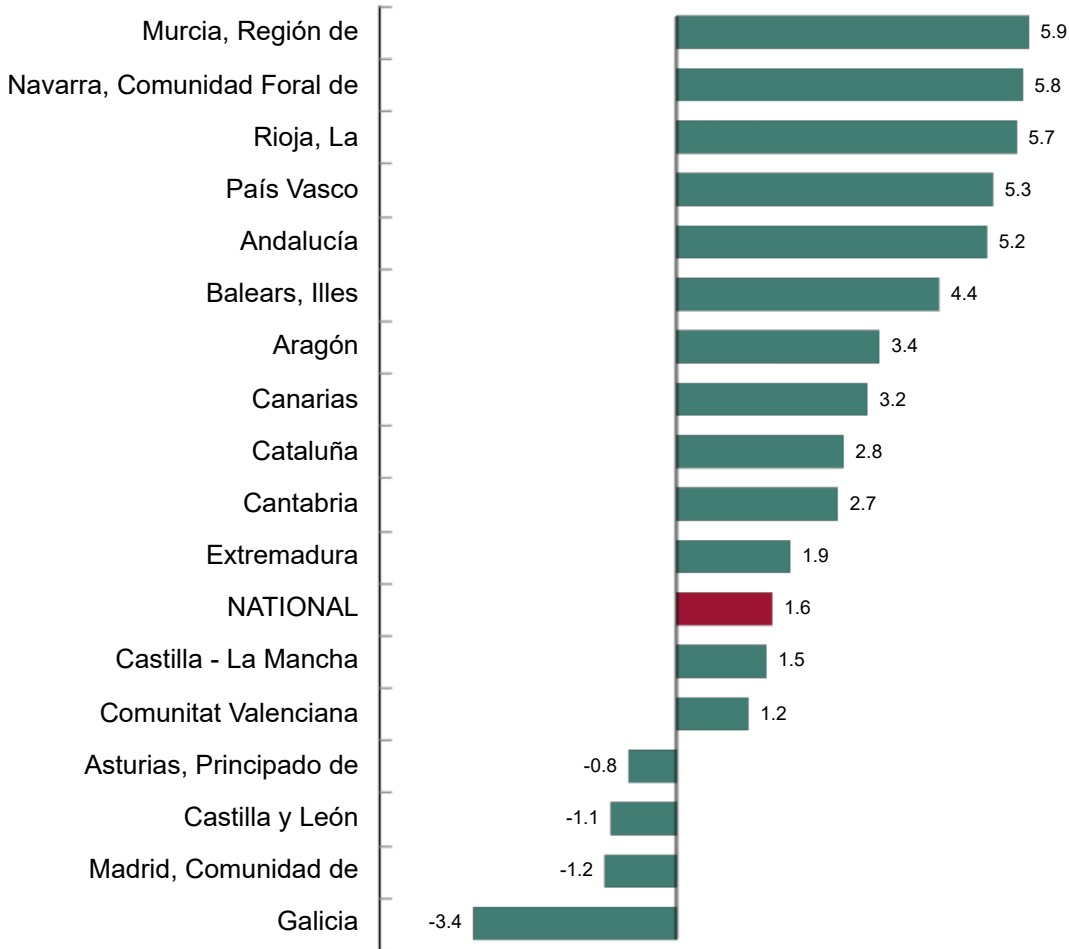
Results by Autonomous Community. Annual variation rates of the turnover index. Original series

Annual rate in Turnover index for the Market Services Sector increased as compared to February 2025 in 13 Autonomous Communities and decreased in the other four.

Región de Murcia (5.9%), Comunidad Foral de Navarra (5.8%) and La Rioja (5.7%) registered the largest increases. Galicia (-3.4%), Comunidad de Madrid (-1.2%) and Castilla y León (-1.1%) recorded the largest decreases.

General index of Market Services Sector Turnover by Autonomous Community. February 2026

Annual Rate. Percentage



Employment trend

The Employment in the Market Services Sector index experienced a variation of 1.2% in February as compared to the same month of the previous year. This rate was one tenth higher than that registered in January.

National Indices of employed personnel by sector. February 2026

	Index	Rate (%)	
		Monthly	Annual
GENERAL INDEX	107.5	0.0	1.2
1. TRADE	106.1	-0.3	1.0
2. OTHER SERVICES	108.2	0.2	1.3

Current press release at: <https://www.ine.es/dyngs/Prensa/en/IAS0226.htm>

Data revisions and updates

The INE has updated the SSAI data for the last five months. In the case of the series adjusted, the series have been reviewed from the beginning, following the INE standard. All results of this operation are available on [INEBase](#).

In accordance with [Commission Delegated Regulation \(EU\) 2023/137](#), the INE has begun to work on incorporating the new National Classification of Economic Activities NACE-2025 in all of its statistical operations.

In the case of the SSAI, the first publication of results with NACE-2025 will take place in March 2028.

Methodological note

The **Services Sector Activity Indicators (SSAI)** measure the short-term evolution of the activity of companies belonging to the Non-Financial Market Services sector through two variables: turnover and employed personnel. Turnover comprises the amounts invoiced by the company for provision of services and sale of goods. Employed personnel include both paid and unpaid personnel.

In order to obtain this data, an ongoing survey is conducted, every month researching more than 27,000 companies that operate in this sector. Results are presented as indices so as to measure variations as compared to the base year 2021.

Type of survey: continuous monthly survey.

Base year: 2021.

Population scope: companies whose main activity is described in sections G, (Commerce), H (Transportation and Storage), I (Hospitality), J (Information and Communications), L (Real Estate Activities), M (Professional Activities, Scientific and Technical) and N (Administrative Activities and Auxiliary Services) of the National Classification of Economic Activities (CNAE-09).

Geographic scope: all the national territory except for Ceuta and Melilla, for which it is only collected in division 47 of CNAE-09 (retail trade).

Sample size: 27,500 companies

Sampling type: stratified random sampling.

Collection method: internet (IRIA system), administrative register, e-mail, fax, telephone or by postal mail.

More information on the [methodology](#) and the [standardised methodological report](#).

INE statistics are produced in accordance with the Code of Good Practice for European Statistics. More information on [Quality at INE](#) and the [Code of Best Practices](#).

For further information see [INEbase](#)

Official INE account on  [@es_ine](#)

All press releases at: www.ine.es/en/prensa/prensa_en.htm

 Press office: (+34) 91 583 93 63 / (+34) 661 944 540 / (+34) 678 168 837 – gprensa@ine.es

 Information area: (+34) 91 583 91 00 – www.ine.es/infoine/?L=1