

## Services Sector Activity Indicators (SSAI) November 2023. Provisional data

### Main results

- The annual variation of the Market Services Sector turnover index was 0.2% in the calendar and seasonally adjusted series.
- In November, the monthly rate was 1.1% if seasonal and calendar effects are removed.

### More information

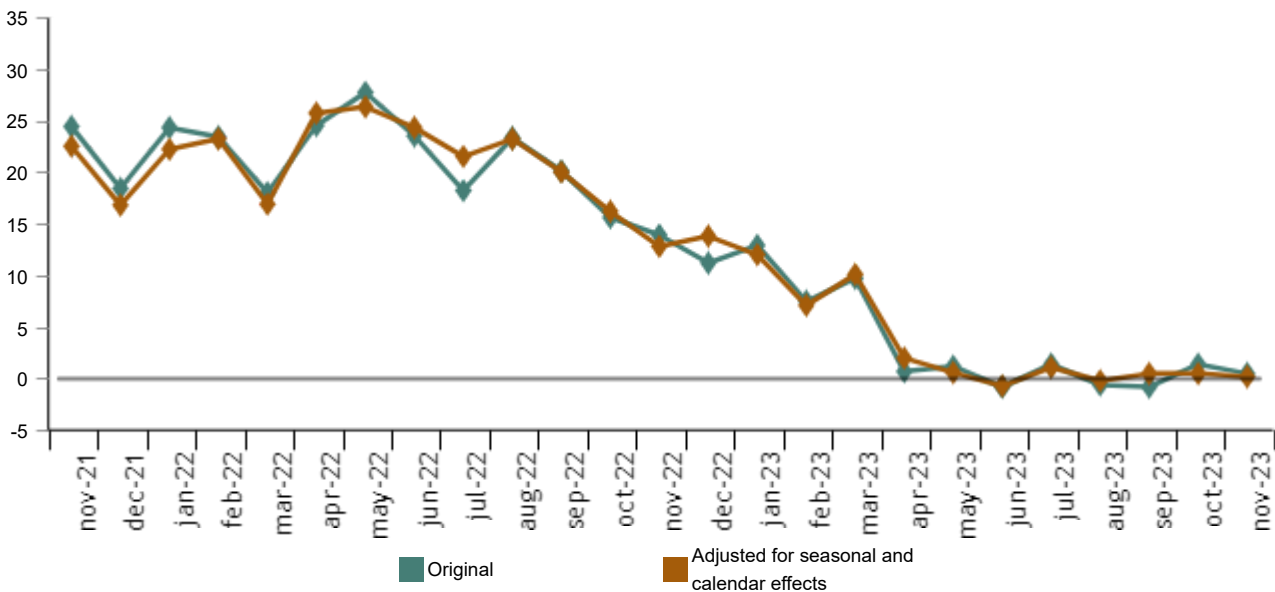
- [Tables annex](#) (includes information by autonomous communities and original and adjusted series by sectors)
- [Detailed results](#) (monthly and annual data)

The general index of the turnover for the Market Services Sector, after adjusting for seasonal and calendar effects, experienced a variation of 0.2% in November compared to the same month of 2022. This rate was three tenths lower than that recorded in October.

The original series presented an annual variation of 0.5%, which was almost one point below that registered in October.

### General index of turnover for the Market Services Sector

Annual Rate. Percentage



**Annual rates in Turnover index for the Market Services Sector: General and by sector.**

November 2023

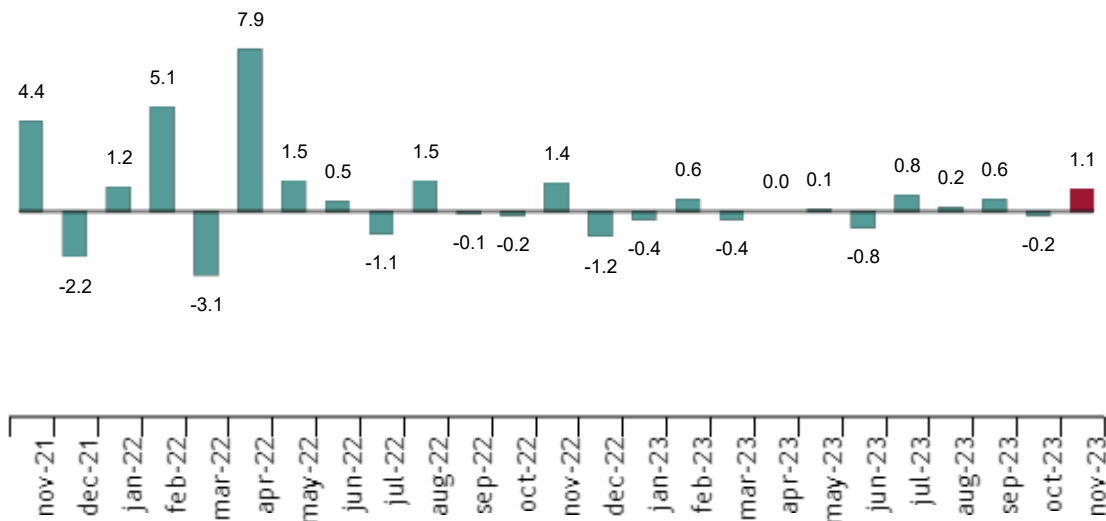
	Original index	Seasonally adjusted index
	Annual rate (%)	Annual rate (%)
<b>GENERAL INDEX</b>	0,5	0,2
<b>1. TRADE</b>	-1,9	-2,2
<b>2. OTHER SERVICES</b>	5,7	5,3

**Monthly trend in turnover for the Market Services Sector**

After adjusting for seasonal and calendar effects, the monthly variation of the general index of turnover for the Market Services Sector between November and October was 1.1%. This rate was 1.3 points higher than that observed in October.

**General index of the turnover for the Market Services Sector. Seasonally and calendar adjusted.**

Monthly rate. Percentage



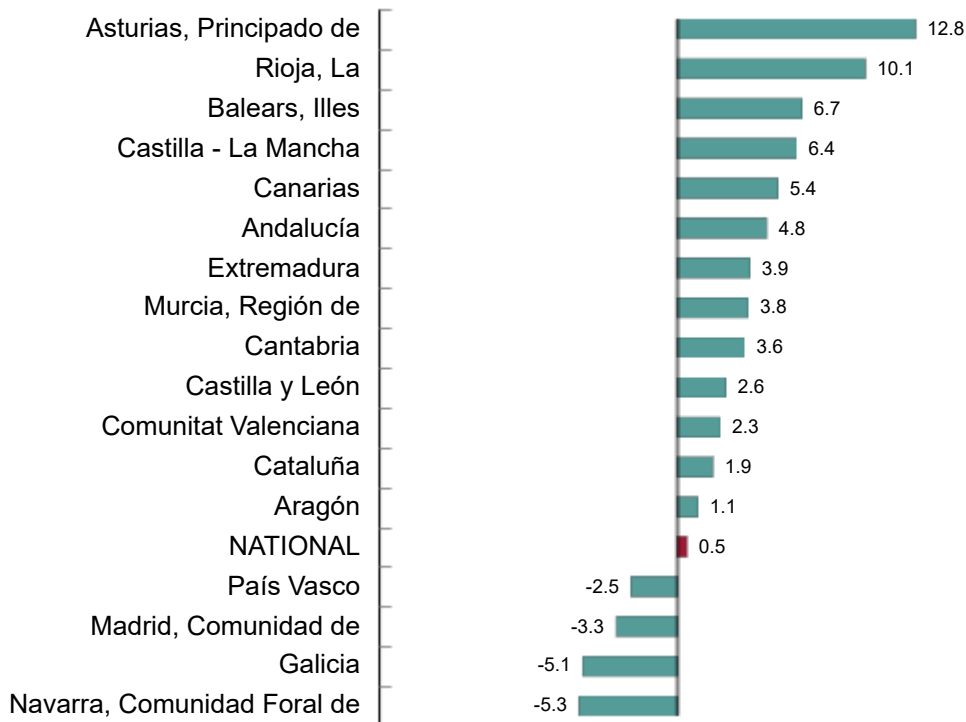
**Results by Autonomous Community. Annual variation rates of the turnover index. Original series**

Annual rate in Turnover index for the Market Services Sector increased as compared to November 2022 in 13 Autonomous Communities and decreased in the other four.

Principado de Asturias (12.8%), La Rioja (10.1%) and Illes Balears (6.7%) registered the largest increases. Comunidad Foral de Navarra (-5.3%), Galicia (-5.1%) and Comunidad de Madrid (-3.3%) recorded the largest decreases.

**General index of Market Services Sector Turnover by Autonomous Community. November 2023**

Annual Rate. Percentage



**Employment trend**

The Employment in the Market Services Sector index experienced a variation of 2.0% in November as compared to the same month of the previous year. This rate was one tenth higher than that registered in October.

**National Indices of employed personnel by sector. November 2023**

	Index	Rate (%)	
		Monthly	Annual
<b>GENERAL INDEX</b>	112,6	-0,5	2,0
<b>1. TRADE</b>	110,5	0,6	1,8
<b>2. OTHER SERVICES</b>	114,0	-1,1	2,1

**Revisions and data update**

On the press release day, INE has updated PT data for the same month of the previous year. Results are available at [INEbase](#).

Current press release at: [www.ine.es/dyngs/Prensa/en/IAS1123.htm](http://www.ine.es/dyngs/Prensa/en/IAS1123.htm)

## Methodological note

The Services Sector Activity Indicators (SSAI) measure the short-term evolution of the activity of companies belonging to the Non-Financial Market Services sector through two variables: turnover and employed personnel. Turnover comprises the amounts invoiced by the company for provision of services and sale of goods. Employed personnel include both paid and unpaid personnel.

In order to obtain this data, an ongoing survey is conducted, every month researching more than 28,000 companies that operate in this sector. Results are presented as indices so as to measure variations as compared to the base year 2021.

The characteristics of this statistics are:

**Type of survey:** monthly continuous survey.

**Base year:** 2021.

**Population scope:** companies whose main economic activity is described in sections G, (Trade), H (Transport and Storage), I (Accommodation), J (Information and Communications), M (Professional, Scientific and Technical Activities) and N (Administrative and Support Services Activities) of the National Classification of Economic Activities (CNAE-09).

**Geographical scope:** all the national territory except for Ceuta and Melilla, for which it is only collected in division 47 of CNAE-09 (retail trade).

**Sample size:** 28.000 companies.

**Type of sampling:** stratified random sampling.


**Collection method:** internet (IRIA system), e-mail, fax, telephone or by postal mail.

For more information you can access the [methodology](#) and the [standardised methodological report](#).

INE statistics are produced in accordance with the Code of Good Practice for European Statistics. More information at Quality at INE and the [Code of Best Practices](#).

---

For further information see [INE base](#)

Official INE account on  [@es\\_ine](#)

---

All press releases at: [www.ine.es/en/prensa/prensa\\_en.htm](http://www.ine.es/en/prensa/prensa_en.htm)

 Press office: (+34) 91 583 93 63 / 94 08 – [gprensa@ine.es](mailto:gprensa@ine.es)

 Information area: (+34) 91 583 91 00 – [www.ine.es/infoine/?L=1](http://www.ine.es/infoine/?L=1)