

## Industrial Turnover Indices (ITI) March 2024. Provisional data

### Main results

- The annual rate variation of the Total Industrial Turnover Index stands at 0.2% in the seasonal and calendar adjusted and -12.2% in the original.
- The monthly variation stands at -0.6%, after seasonal and calendar adjustment.

### More information

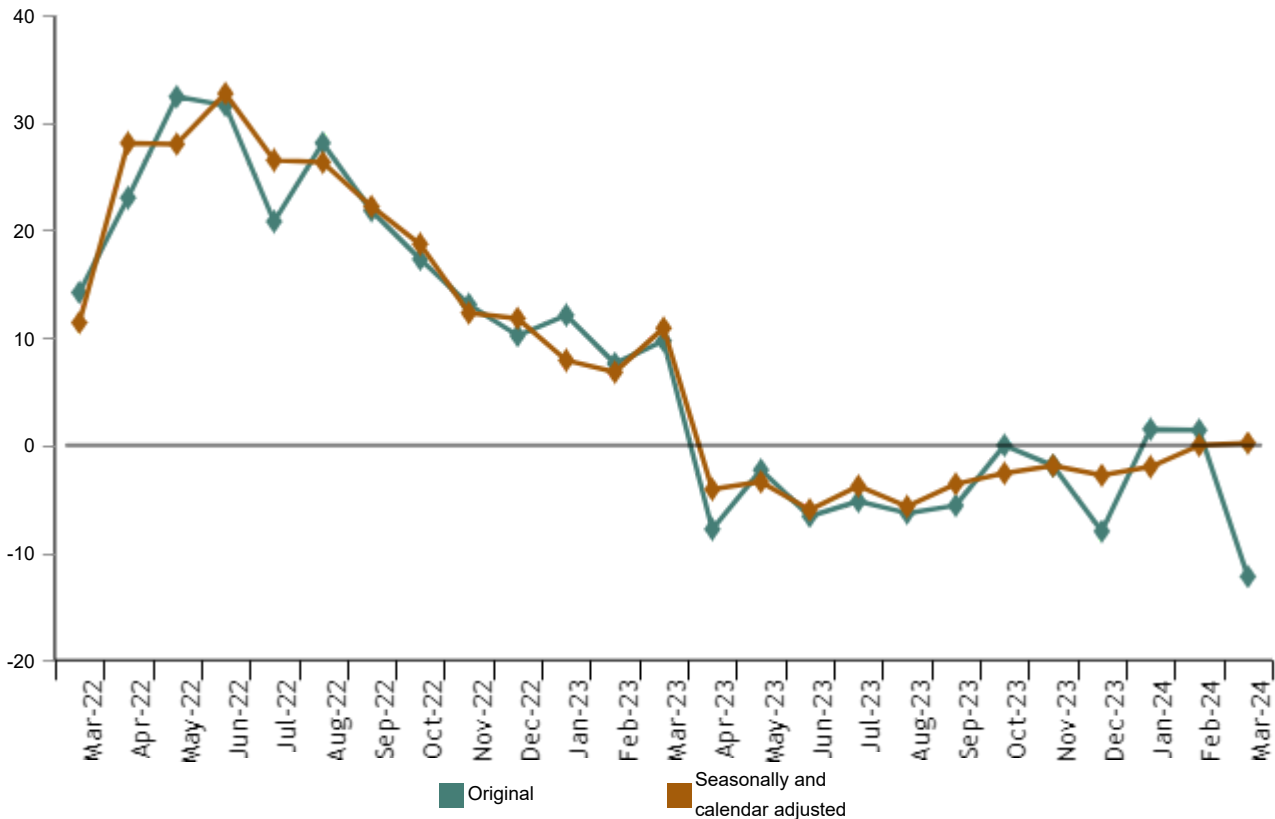
- [Tables annex](#) (includes information by autonomous communities and original and adjusted series by sectors)
- [Detailed results](#) (monthly and annual data)

The Industrial Turnover Index (ITI), once adjusted for seasonal and calendar effects, showed in March a variation of 0.2% as compared with the same month of the previous year.

The ITI original series registered an annual variation of -12.2%.

#### Industrial Turnover Index, Total. Seasonally and calendar adjusted. March 2024

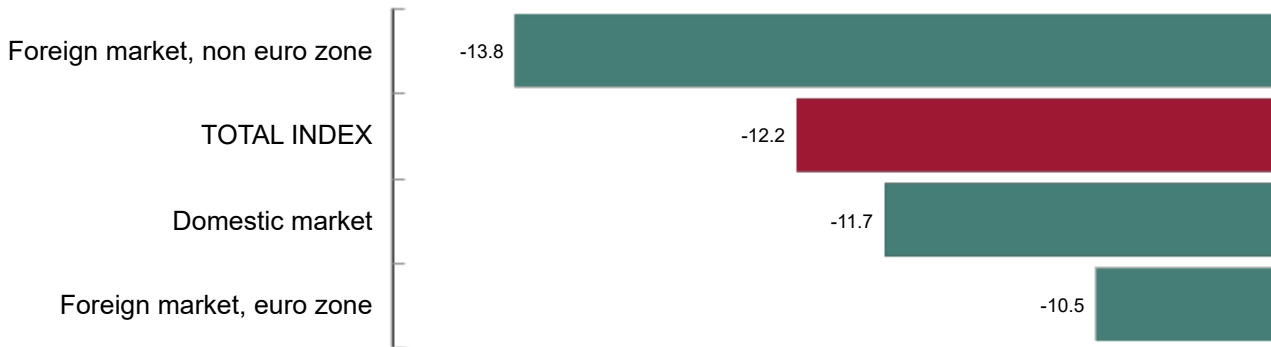
Monthly rate. Percentage



By market, all markets showed negative annual rates in March. It is worth noting the decrease registered in the non euro area in the foreign market (-13.8%).

**Industrial Turnover Index, Total and by market. March 2024**

Annual rate. Percentage

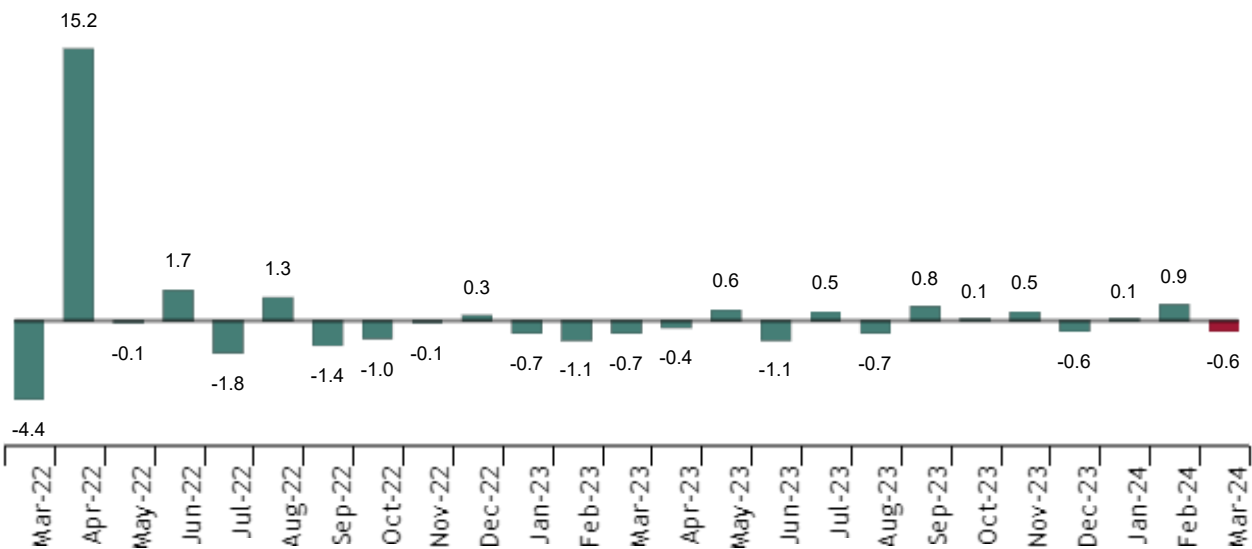


**Monthly trend of ITI**

The monthly variation of the seasonally and calendar adjusted Total Industrial Turnover Index between the months of March and February, stood at -0.6%. This rate was 1.5 points lower than the previous month.

**Industrial Turnover Index, Total. Seasonally and calendar adjusted. March 2024**

Annual rate. Percentage



By Main Industrial Groupings (MIGs), four of the five sectors showed negative monthly rates. It is worth highlighting the decrease in *Non-durable consumer goods* (-2.7%), followed by *Durable consumer goods* (-1.7%). The only sector that increased was *Energy* (0.1%).

**Results by Autonomous Community. Original series**

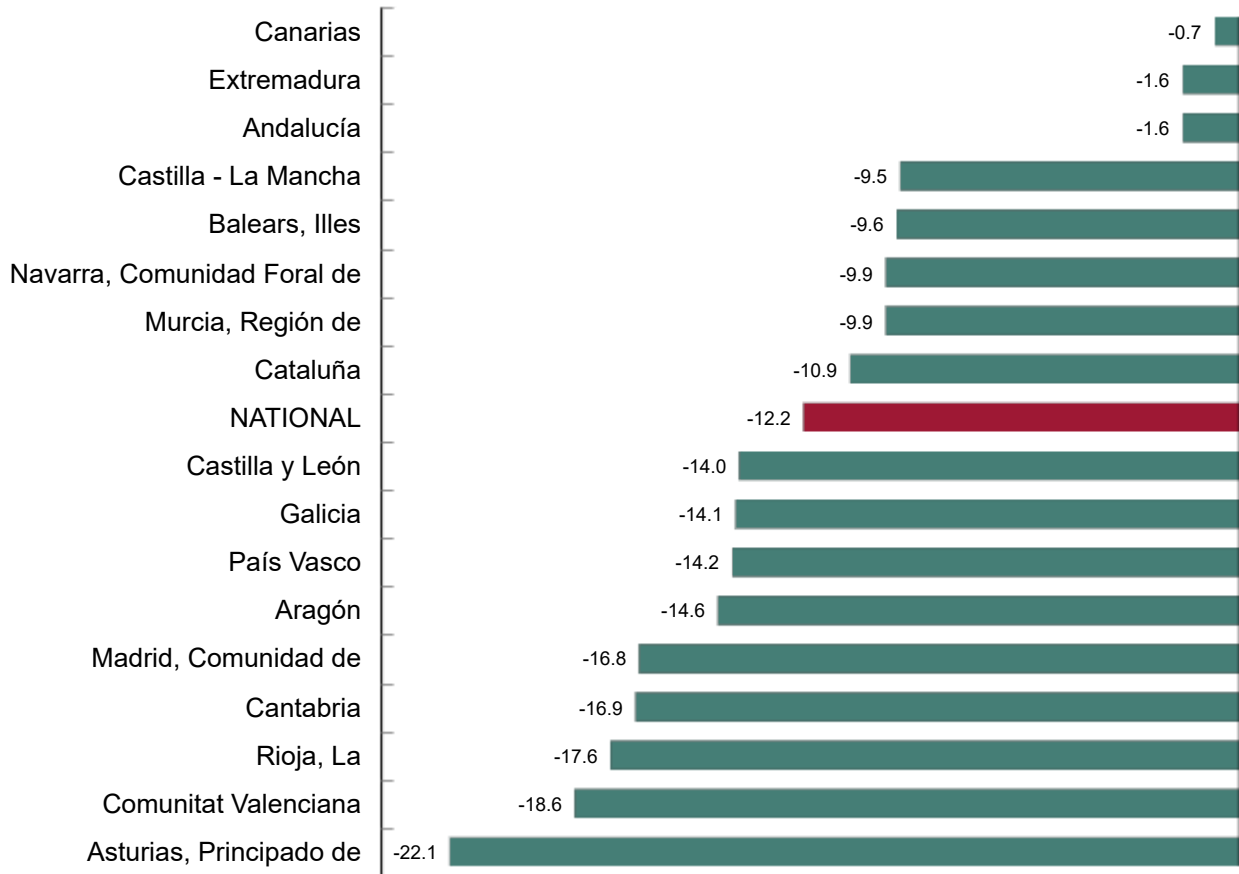
Turnover decreased as compared to March 2023 in all the autonomous communities.

The largest decreases were recorded in Principado de Asturias (-22.1%), Comunitat Valenciana (-18.6%) and La Rioja (-17.6%). The lowest were recorded in Canarias (-0.7%), Extremadura and Andalucía (-1.6% in both cases).

**Industrial Turnover Index, Total and by Autonomous Community. March 2024**

Annual rate. Percentage

Current press release at: <https://www.ine.es/dyngs/Prensa/en/CN0324.htm>



### Revisions and data update

On the press release day, INE has updated ITI data series corresponding to the last 13 months. In the case of calendar adjusted and seasonally and calendar adjusted series, according to INE standard, series are revised since its beginning. Results are available at [INEBase](#).

Current press release at: <https://www.ine.es/dyngs/Prensa/en/ICN0324.htm>

## Methodological note

The Industrial Turnover Indices (ITI) aim to measure the evolution of the activity of companies that are part of the industrial sector in Spain, based on their turnover figures. This information is also requested disaggregated by markets.

**Survey Type:** ongoing monthly.

**Base year:** 2021.

**Population scope:** units of economic activity whose main activity is included in Sections B: Extractive industries (with the exception, due to their not being relevant to Spanish industry, of division 09) or C: Manufacturing industry of CNAE-2009.

**Geographical scope:** the whole country, excluding Ceuta and Melilla.

**Sample size:** Approx. 12,000 establishments.

**Data collection:** monthly, value of total business turnover broken down by market.


**Collection method:** fill in a questionnaire by the respondent using one of the following methods: internet (IRIA system), email, fax, telephone or post.

Further information is available in the [methodology](#) and in the [standardised methodological report](#).

INE's statistics are produced according to the European Statistics Code of Practice. For further information at [Quality at INE](#) and [Code of Practice](#).

---

For further information see [INE base](#)

Official INE account on  [@es\\_ine](#)

---

All press releases at: [www.ine.es/en/prensa/prensa\\_en.htm](http://www.ine.es/en/prensa/prensa_en.htm)

 Press office: (+34) 91 583 93 63 / 94 08 – [gprensa@ine.es](mailto:gprensa@ine.es)

 Information area: (+34) 91 583 91 00 – [www.ine.es/infoine/?L=1](http://www.ine.es/infoine/?L=1)