

## Industrial Turnover Indices (ITI)

April 2026

### Main results

- The annual rate variation of the Total Industrial Turnover Index stands at 10.4% in the seasonal and calendar adjusted and 11.2% in the original.
- The monthly variation stands at 0.8%, after seasonal and calendar adjustment.

### More information

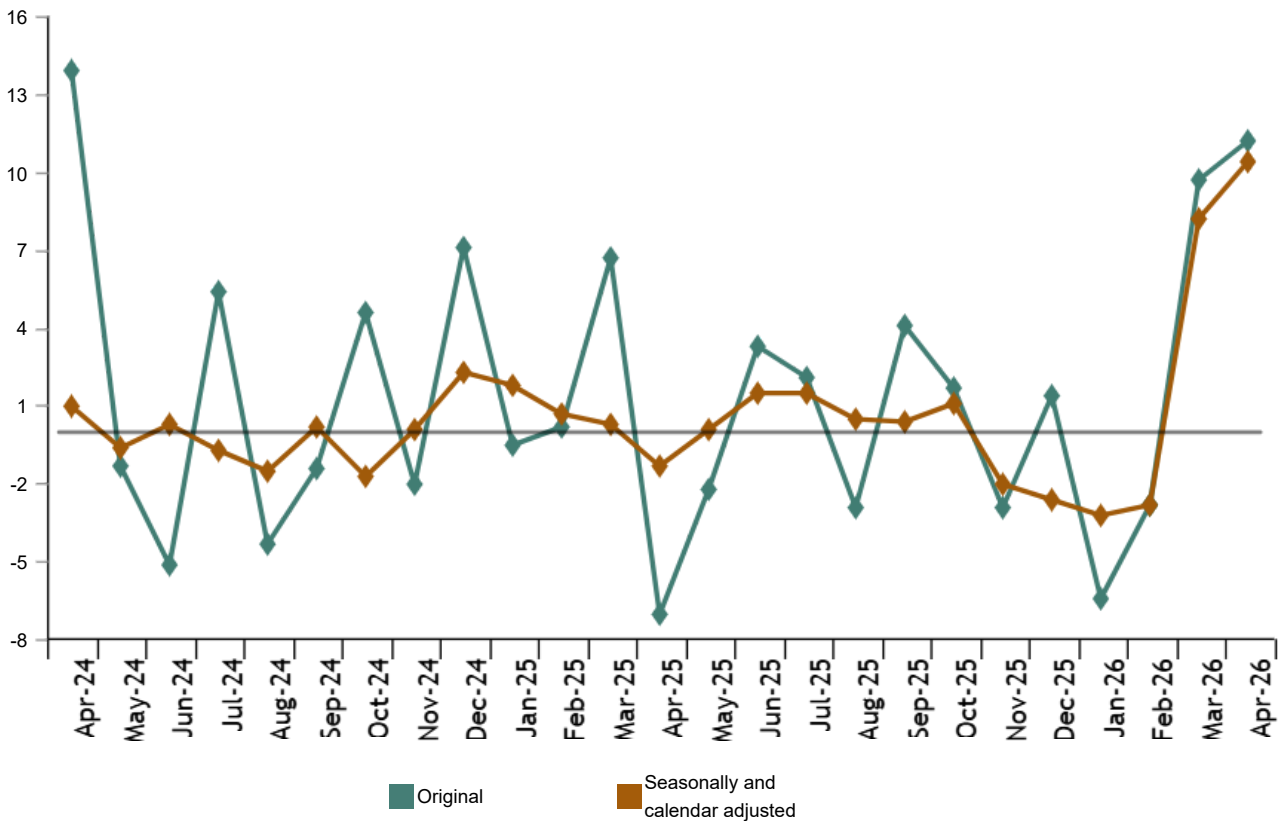
- [Tables annex](#) (includes information by autonomous communities and original and adjusted series by sectors)
- [Detailed results](#) (monthly data)

The Industrial Turnover Index (ITI), once adjusted for seasonal and calendar effects, showed in April a variation of 10.4% as compared with the same month of the previous year.

The ITI original series registered an annual variation of 11.2%.

#### Industrial Turnover Index, Total

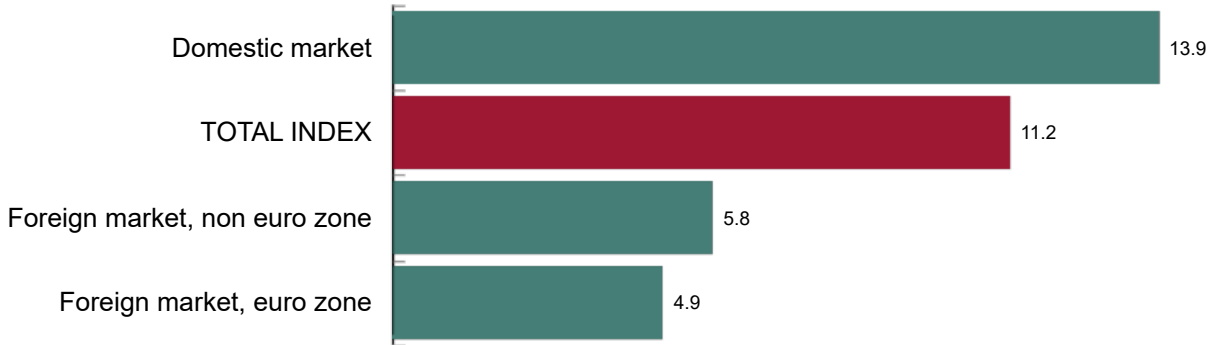
Annual rate. Percentage



By market, all markets showed positive annual rates in April. It is worth noting the increase registered in the domestic market (13.9%).

**Industrial Turnover Index, Total and by market. April 2026**

Annual rate. Percentage

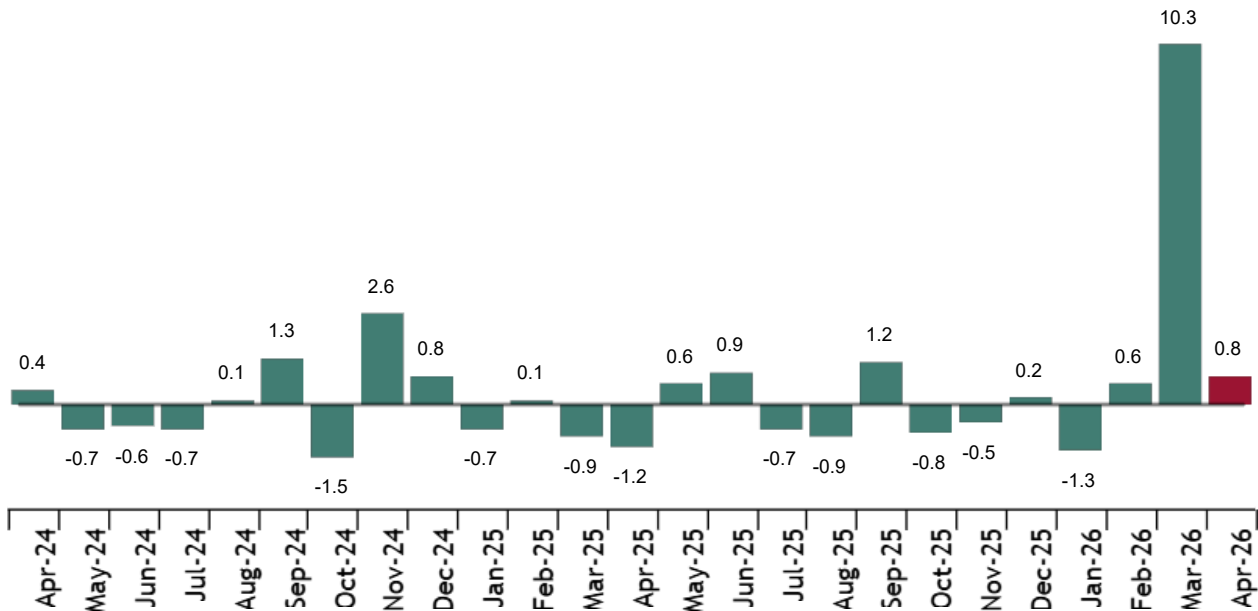


**Monthly trend of ITI**

The monthly variation of the seasonally and calendar adjusted Total Industrial Turnover Index between the months of April and March, stood at 0.8%. This rate was 9.5 points lower than the previous month.

**Industrial Turnover Index, Total. Seasonally and calendar adjusted**

Monthly rate. Percentage



By Main Industrial Groupings (MIGs), *Energy* (8.8%) and *Intermediate goods* (1.2%) showed positive monthly rates. On the other hand *Non-durable consumer goods* (-2.7%), *Capital goods* (-2.0%) and *Durable consumer goods* (-1.5%) showed negative monthly rates.

Current press release at: <https://www.ine.es/dyngs/Prensa/en/ICN0426.htm>

**Results by Autonomous Community. Original series**

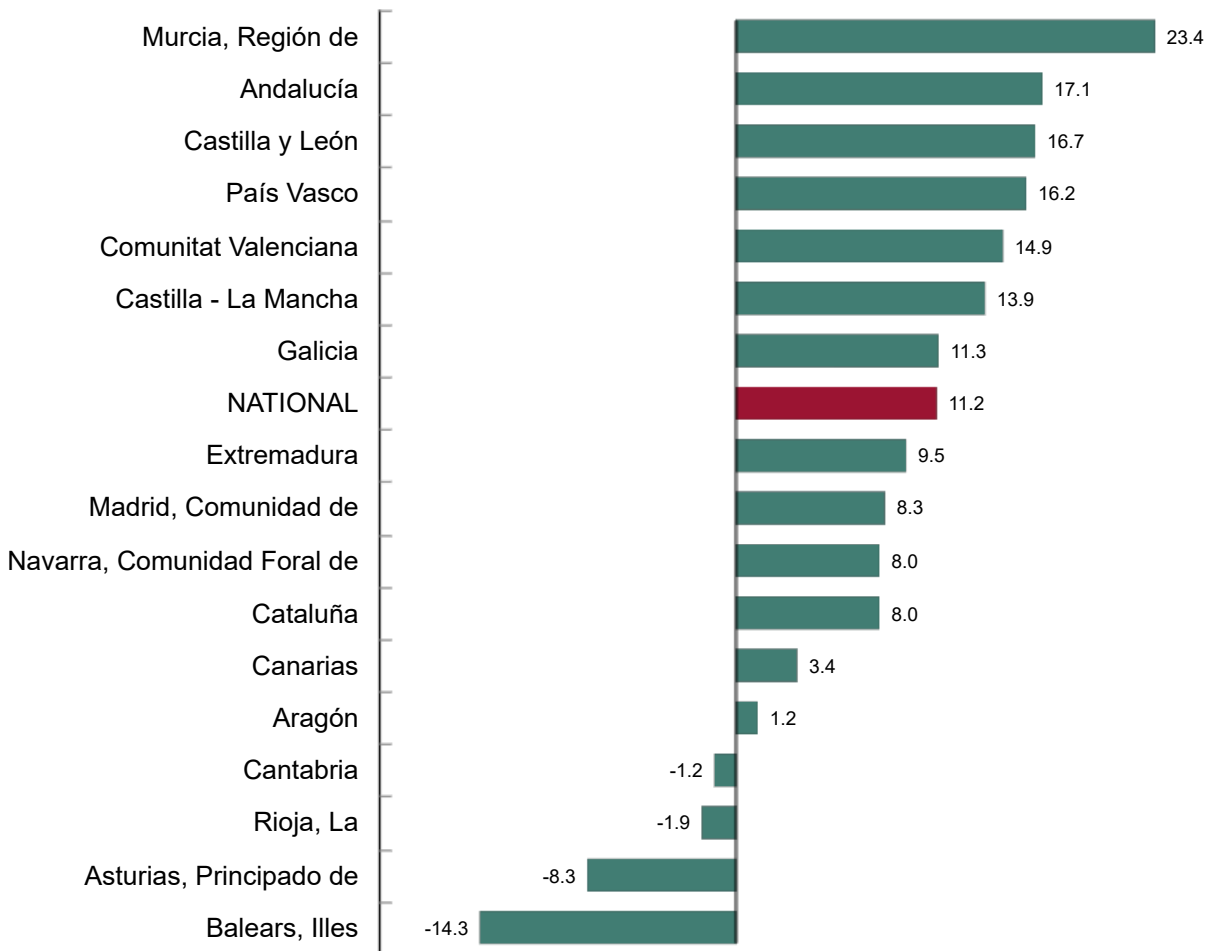
Turnover increased as compared to April 2025 in 13 Autonomous Communities and decreased in the other four.

The largest increases were recorded in Región de Murcia (23.4%), Andalucía (17.1%) and Castilla y León (16.7%).

The largest decreases were recorded in Illes Balears (-14.3%), Principado de Asturias (-8.3%) and La Rioja (-1.9%).

**Annual rates of the Industrial Turnover Index, Total. April 2026**

Percentage



Current press release at: <https://www.ine.es/dyngs/Prensa/en/ICN0426.htm>

**Revisions and data update**

On the press release day, INE has updated ITI data series corresponding to the last 13 months. In the case of calendar adjusted and seasonally and calendar adjusted series, according to INE standard, series are revised since its beginning. Results are available at [INEBase](#).

According to the [Commission Delegated Regulation \(EU\) 2023/137](#) INE has started the works to incorporate the new National Classification of Economic Activities CNAE-2025 in all the statistical operations.

In the case of the ITI, the release of the first results with CNAE-2025 will take place in March 2028.

## Methodological note

Industrial Turnover Indices (ITI) aim at measuring the monthly evolution of the companies belonging to the industrial sector in Spain, according to their turnover. This information is required broken down by markets.

**Survey Type:** ongoing monthly.

**Base year:** 2021.

**Population scope:** units of economic activity whose main activity is included in Sections B: Extractive industries (with the exception, due to their not being relevant to Spanish industry, of division 09) or C: Manufacturing industry of CNAE-2009.

**Geographical scope:** the whole country, excluding Ceuta and Melilla.

**Results and information reference period:** calendar month.

**Sample size:** Approx. 12,000 establishments.

**Data collection:** monthly, value of total business turnover broken down by market.


**Collection method:** fill in a questionnaire by the respondent using one of the following methods: internet (IRIA system), email, fax, telephone or post.

Further information is available in the [methodology](#) and in the [standardised methodological report](#).

INE's statistics are produced according to the European Statistics Code of Practice. For further information at [Quality at INE and Code of Practice](#).

---

For further information see [INE base](#)

Official INE account on  [@es\\_ine](#)

---

All press releases at: [www.ine.es/en/prensa/prensa\\_en.htm](https://www.ine.es/en/prensa/prensa_en.htm)

 Press office: (+34) 91 583 93 63 / (+34) 661 944 540 / (+34) 678 168 837 – [gpresa@ine.es](mailto:gpresa@ine.es)

 Information area: (+34) 91 583 91 00 – [www.ine.es/infoine/?L=1](https://www.ine.es/infoine/?L=1)