

## Industrial Turnover Indices (ITI) May 2024. Provisional data

### Main results

- The annual rate variation of the Total Industrial Turnover Index stands at -0.5% in the seasonal and calendar adjusted and -1.4% in the original.
- The monthly variation stands at -0.8%, after seasonal and calendar adjustment.

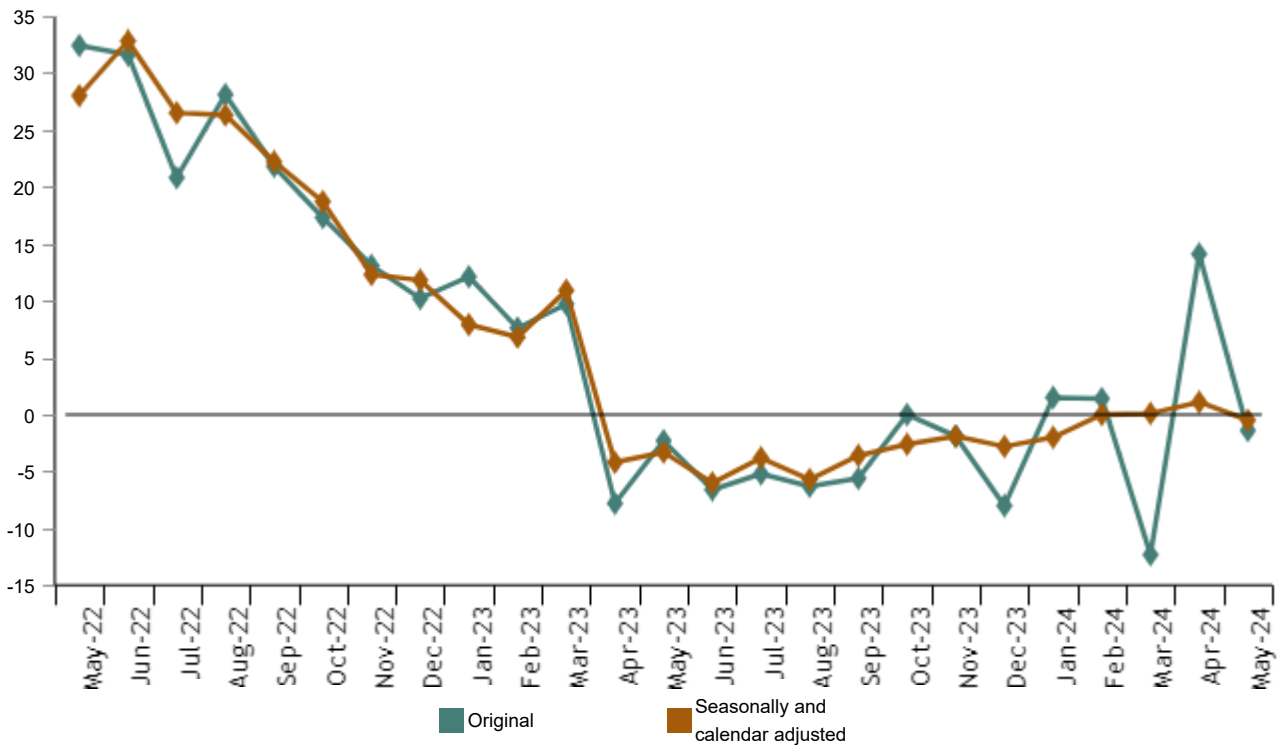
### More information

- [Tables annex](#) (includes information by autonomous communities and original and adjusted series by sectors).
- [Detailed results](#) (monthly and annual data).

The Industrial Turnover Index (ITI), once adjusted for seasonal and calendar effects, showed in May a variation of -0.5% as compared with the same month of the previous year.

The ITI original series registered an annual variation of -1.4%.

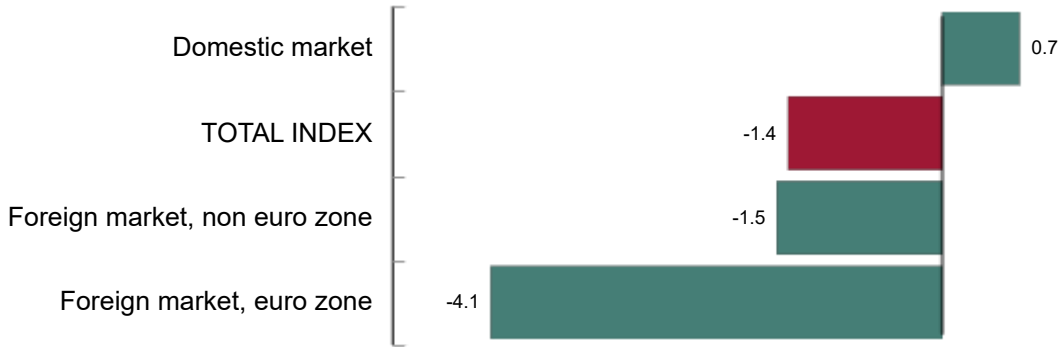
### Industrial Turnover Index Monthly rate. Percentage



By market, negative annual rates were observed in two of the analysed markets in May. It is worth noting the decrease registered in the euro area in the foreign market (-4.1%).

**Industrial Turnover Index, Total and by market. May 2024**

Annual rate. Percentage

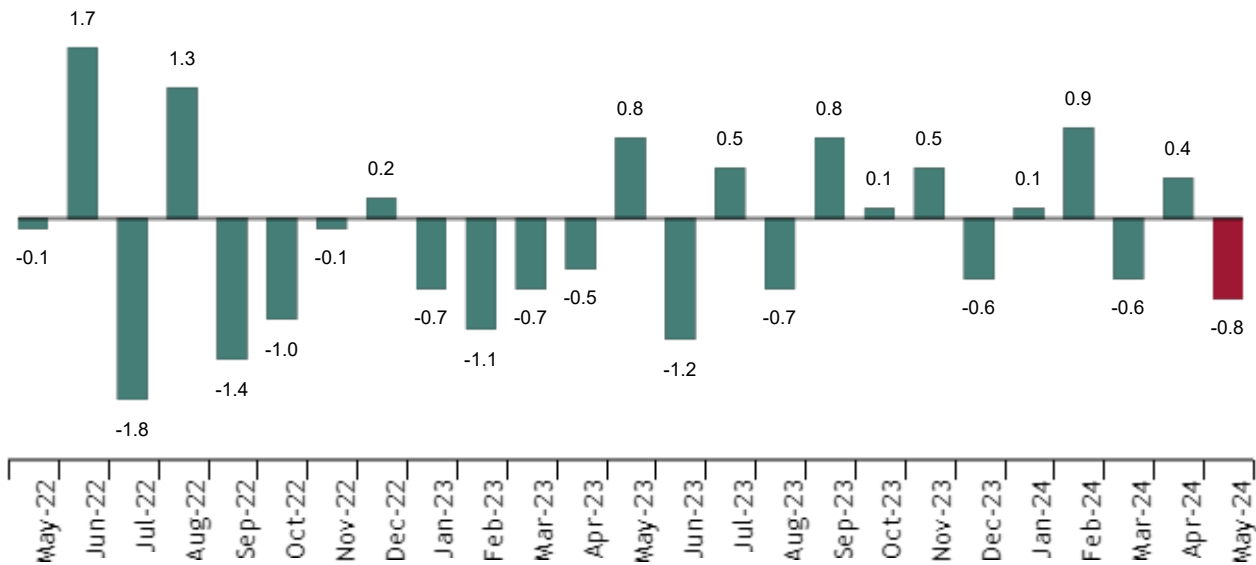


**Monthly trend of ITI**

The monthly variation of the seasonally and calendar adjusted Total Industrial Turnover Index between the months of May and April, stood at -0.8%. This rate was 1.2 points lower than the previous month.

**Industrial Turnover Index, Total. Seasonally and calendar adjusted.**

Annual rate. Percentage



By Main Industrial Groupings (MIGs), four of the five sectors showed negative monthly rates. It is worth highlighting the decrease in *Capital goods* and *Non-durable consumer goods* (-1.1% in both cases). The only sector that increased was *Energy* (0.5%).

**Results by Autonomous Community. Original series**

Turnover increased as compared to May 2023 in eight Autonomous Communities and decreased in eight.

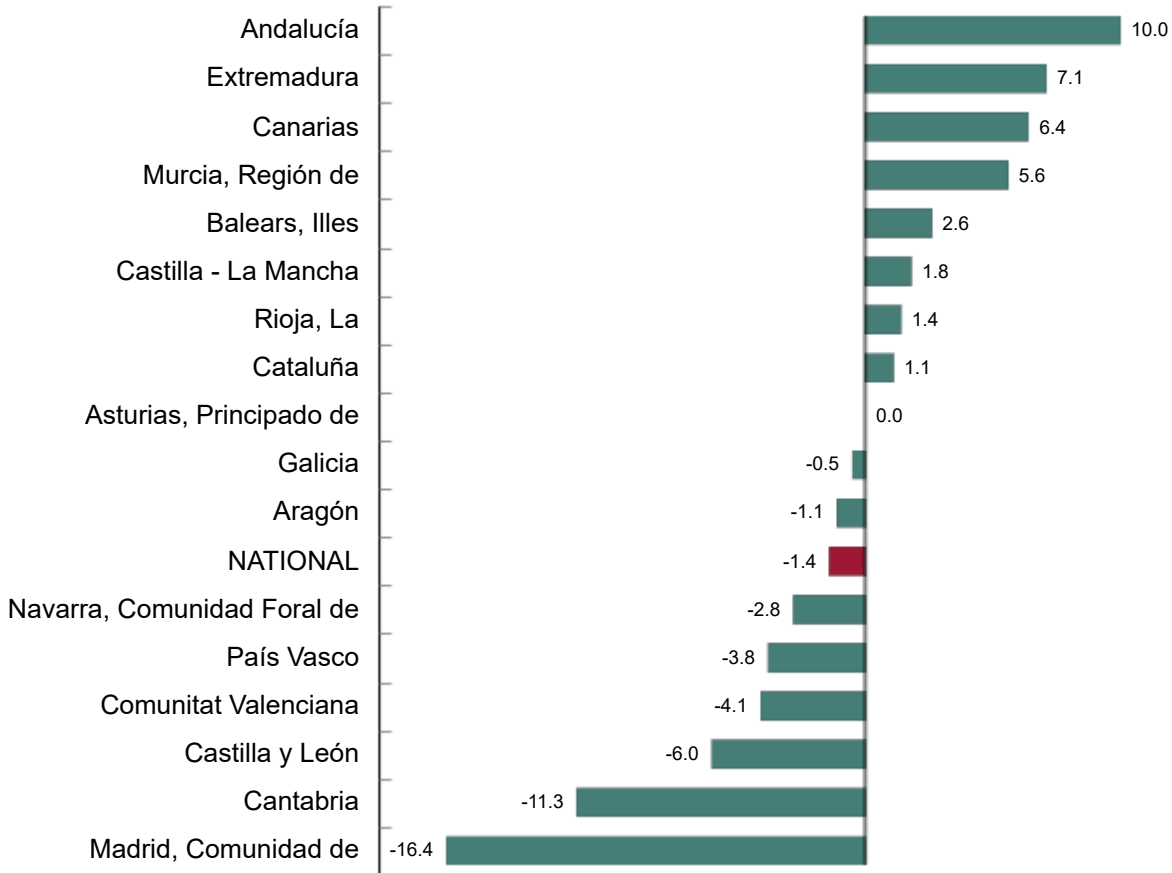
The largest decreases were recorded in Comunidad de Madrid (-16.4%), Cantabria (-11.3%) and Castilla y León (-6.0%).

The largest increases were recorded in Andalucía (10.0%), Extremadura (7.1%) and Canarias (6.4%).

Current press release at: <https://www.ine.es/dyngs/Prensa/en/ICN0524.htm>

**Industrial Turnover Index, Total and by Autonomous Community. May 2024**

Percentage



**Revisions and data update**

On the press release day, INE has updated ITI data series corresponding to the last 13 months. In the case of calendar adjusted and seasonally and calendar adjusted series, according to INE standard, series are revised since its beginning. Results are available at [INEbase](#).

Current press release at: <https://www.ine.es/dyngs/Prensa/en/ICN0524.htm>

## Methodological note

Industrial Turnover Indices (ITI) are short-term indicators aiming at measuring the monthly evolution of the industrial sector, excluding the construction.

The required information is collected since January 2002 through a survey addressed to more than 12.000 industrial establishments throughout the country.

**Survey Type:** ongoing monthly.

**Base year:** 2021.

**Population scope:** units of economic activity whose main activity is included in Sections B: Extractive industries (with the exception, due to their not being relevant to Spanish industry, of division 09) or C: Manufacturing industry of CNAE-2009.

**Geographical scope:** the whole country, excluding Ceuta and Melilla.

**Sample size:** Approx. 12,000 establishments.

**Data collection:** monthly, value of total business turnover broken down by market.


**Collection method:** fill in a questionnaire by the respondent using one of the following methods: internet (IRIA system), email, fax, telephone or post.

Further information is available in the [methodology](#) and in the [standardised methodological report](#).

INE's statistics are produced according to the European Statistics Code of Practice. For further information at [Quality at INE](#) and [Code of Practice](#).

---

For further information see [INE base](#)

Official INE account on  [@es\\_ine](#)

---

All press releases at: [www.ine.es/en/prensa/prensa\\_en.htm](http://www.ine.es/en/prensa/prensa_en.htm)

 Press office: (+34) 91 583 93 63 / 94 08 – [gprensa@ine.es](mailto:gprensa@ine.es)

 Information area: (+34) 91 583 91 00 – [www.ine.es/infoine/?L=1](http://www.ine.es/infoine/?L=1)