

## Construction Production Index (COPI) March 2026. Provisional data

### Main results

- The annual rate of the Construction Production Index stands at -5.8% in the seasonal and calendar-adjusted series and -4.3% in the original.
- The monthly variation of the COPI stood at 1.9%, after seasonal and calendar adjustment.

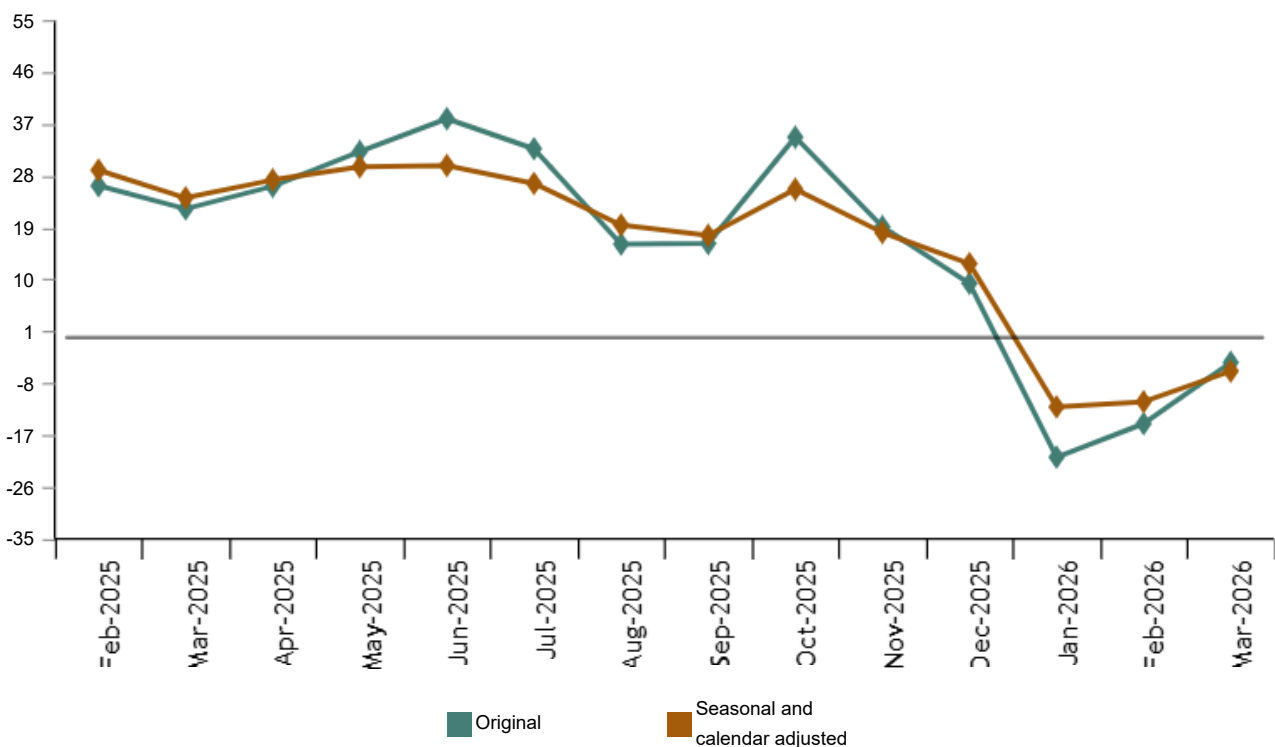
### More information

- [Tables annex](#) (includes information on original and seasonally adjusted series)
- [Detailed results \(monthly\)](#)

The Total Construction Production Index, once adjusted for seasonal and calendar effects, showed a variation of -5.8% in March, as compared with the same month of the previous year. On the other hand, the COPI original series registered an annual variation of -4.3%.

### Construction Production Index, Total. Seasonally and calendar adjusted

Annual rates. Percentage



The seasonally and calendar-adjusted indices showed positive annual growth rates in two of the three divisions analyzed. *Civil engineering* recorded the highest increase (19.3%), while the only decline occurred in *Construction of buildings* (-32.1%).

**Construction Production Index, Total and by Divisions. March 2026**

Annual rates. Percentage

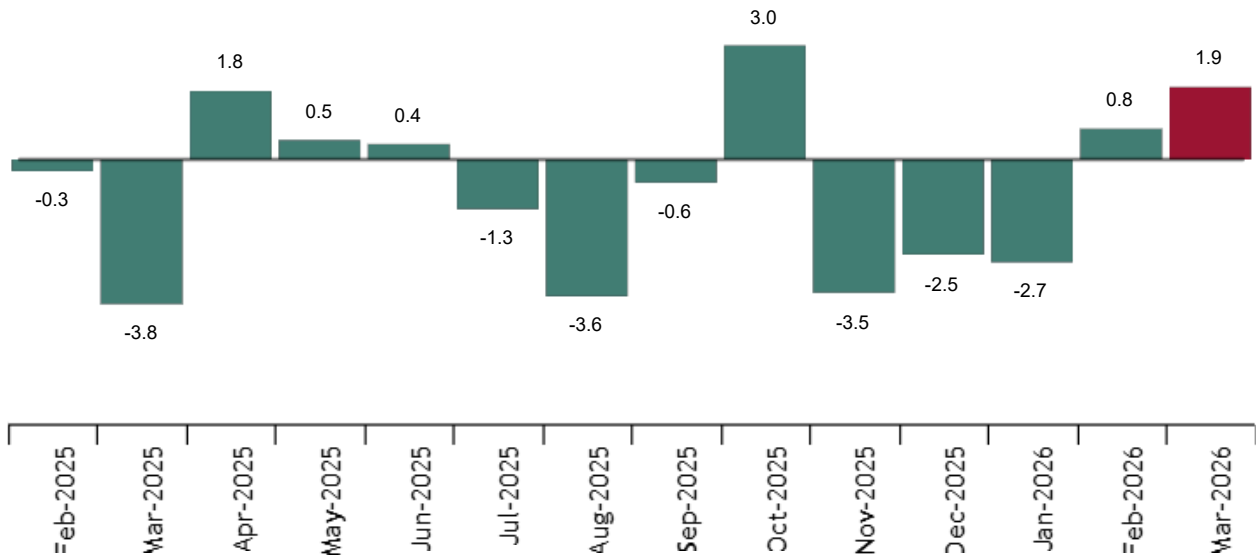
	Unadjusted index	Seasonally and calendar adjusted index
	Annual rate (%)	Annual rate (%)
<b>CONSTRUCTION</b>	-4.3	-5.8
<b>Construction of buildings</b>	-37.5	-32.1
<b>Civil engineering</b>	19.4	19.3
<b>Specialised construction activities</b>	3.6	1.8

**Monthly trend of COPI**

The monthly variation of the seasonally and calendar-adjusted Construction Production Index between the months of February and March 2026 stood at 1.9%. This rate was 1.1 points higher than the previous month.

**Construction Production Index, Total. Seasonally and calendar adjusted**

Monthly rates. Percentage



Of the three divisions analyzed, only *Construction of buildings* showed a negative monthly rate (-1.3%). *Civil engineering* recorded the largest increase (33.6%).

Current press release at: <https://www.ine.es/dyngs/Prensa/en/IPC00326.htm>

## Data revisions and updates

On the press release day, INE has updated COPI data series corresponding to the last 13 months. In the case of calendar adjusted and seasonally and calendar adjusted series, according to INE standard, the series are revised since its beginning. The results are available at [INEBase](#).

According to the [Commission Delegated Regulation \(EU\) 2023/137](#) INE has started the works to incorporate the new National Classification of Economic Activities CNAE-2025 in all the statistical operations.

In the case of the COPI, the release of the first results with CNAE-2025 will take place in March 2028.

## Methodological note

The Construction Production Index (COPI) is a short-term synthesis statistical operation aiming at obtaining an indicator to measure the short-term evolution of added value in the construction sector.

**Survey type:** ongoing monthly.

**Base year:** 2021.

**Population scope:** units of economic activity that carry out any activity included in Section F: Construction CNAE-2009.

**Geographical scope:** the whole country.

**Results reference period:** calendar month.


**Sample size:** Approx. 3,600 units.

**Collection method:** fill in a questionnaire by the respondent using the following methods: internet (IRIA system), email, fax, telephone or post.

Further information is available in the [methodology](#) and in the [standardized methodological report](#).

INE statistics are produced in accordance with the Code of Good Practice for European Statistics. More information on [Quality at INE](#) and [Code of Best Practices](#).

For further information see [INEbase](#)

Official INE account on  [@es\\_ine](#)

All press releases at: [www.ine.es/en/prensa/prensa\\_en.htm](http://www.ine.es/en/prensa/prensa_en.htm)

 Press office: (+34) 91 583 93 63 / (+34) 661 944 540 / (+34) 678 168 837 – [gprensa@ine.es](mailto:gprensa@ine.es)

 Information area: (+34) 91 583 91 00 – [www.ine.es/infoine/?L=1](http://www.ine.es/infoine/?L=1)