

**Flash estimate of the Consumer Price Index (CPI) and
of the Harmonised Index of Consumer Prices (HICP)
December 2020**

**The annual change in the flash estimate of the CPI stands at -0.5%
in December, three tenths above than that registered in November**

The annual rate of the flash estimate of the HICP is -0.6%

Annual rate trend

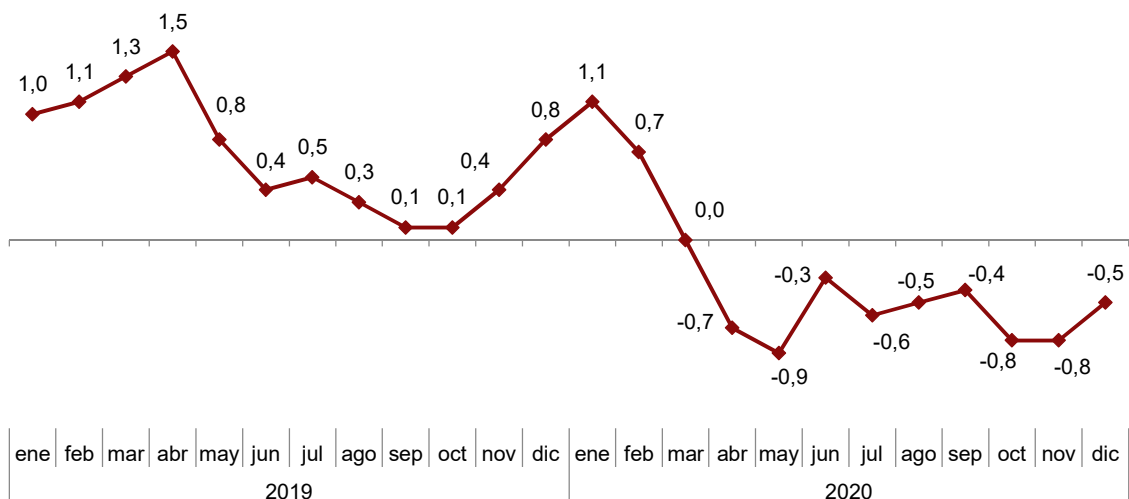
According to the flash estimate issued by the INE, the annual inflation of the CPI in December 2020 was -0.5%.

This indicator provides a progression of the CPI which, if confirmed, would mean an increase of three tenths in its annual rate, as in December this variation was of the -0,8%.

In this behavior, the rise in *electricity* prices, which fell last year, and the increase in the prices of fuels stand out, compared to the registered in 2019.

Annual evolution of the CPI ¹

Overall index. Percentage



¹ The last data refers to the flash estimate

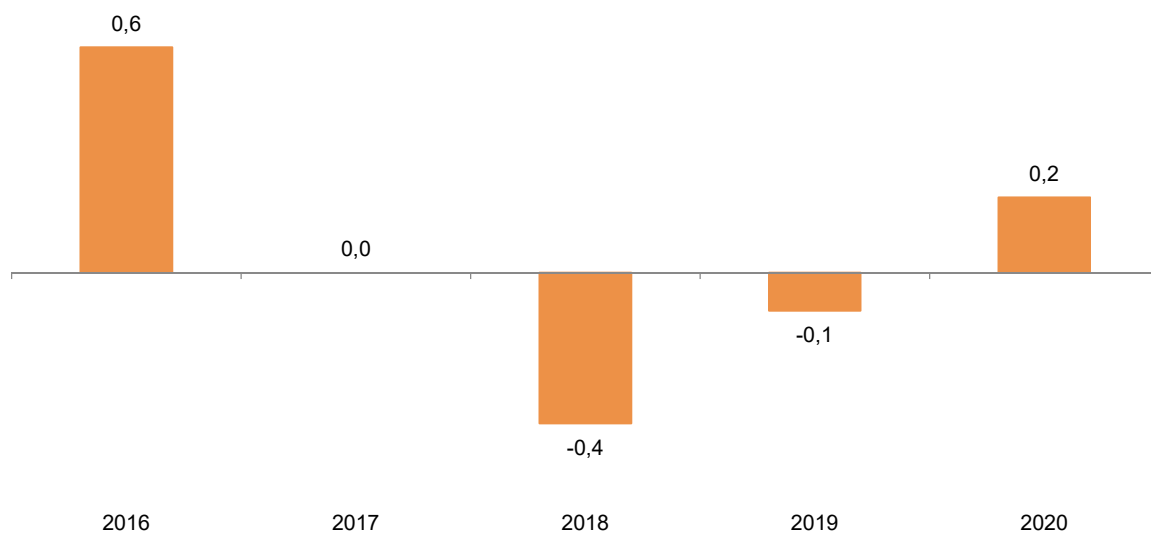
In turn, the annual variation of the flash estimate of the HICP in December stands at -0.6%. If confirmed, the annual rate of the HICP would decrease two tenths with respect to the previous month.

Monthly rate trend

According to the flash estimate of the CPI, consumer prices registered a variation of 0.2% as compared with November

Evolution of the monthly rate of the CPI in November¹

Overall Index. Percentage



¹ The last data refers to the flash estimate

In turn, the monthly change of the HICP flash estimate in December stood at 0.1%

Review and data update

The data released today is an advance of the final CPI and HICP data, which will be published next month. Until then, the results are available in INEbase

Methodological note

The Consumer Price Index (CPI) is a statistical measure of the evolution of the prices of goods and services consumed by the population that reside in family dwellings in Spain.

In turn, the Harmonised Index of Consumer Prices (HICP) is a statistical indicator whose objective is to provide a common average of the inflation that allows conducting international comparisons

Type of survey: continuous on a monthly basis

Base period: 2016 (CPI) and 2015 (HICP)

Reference period of weightings: year prior to the current year

Sample of municipalities: 177

Number of items: 480 (CPI) y 479 (HICP).

Number of observations: approximately 220,000 prices per month.

Functional classification: ECOICOP.

General method of calculation: chained Laspeyres

Collection method: interviewers in establishments and centralised collection for special items

For further information, please consult the methodology of both indicators in the following link:

https://www.ine.es/en/metodologia/t25/t2530138_16_en.pdf

The CPI standardised Methodological report:

<https://www.ine.es/dynt3/metadatos/en/RespuestaDatos.html?oe=30138>

And the HICP standardised Methodological report:

<https://www.ine.es/dynt3/metadatos/en/RespuestaDatos.html?oe=30180>

For further information see **INEbase:** www.ine.es/en/ Twitter: [@es_ine](https://twitter.com/es_ine)

All press releases at: www.ine.es/en/prensa/prensa_en.htm

Press office: Telephone numbers: (+34) 91 583 93 63 /94 08 – gprensa@ine.es

Information Area: Telephone number: (+34) 91 583 91 00 – www.ine.es/infoine/?L=1
