

8 March 2007

Transport of passengers statistics

January 2007. *Provisional data*

In January, the number of passengers using city transport increased 4.1% in one year

The number of passengers using the inter-city transport increased 3.7%

Nearly 273 million passengers used **the city transport** in January, (a yearly increase of 4.1%). There were increases of 4.5% in the city bus service and of 3.5% in the metropolitan service in January 2006.

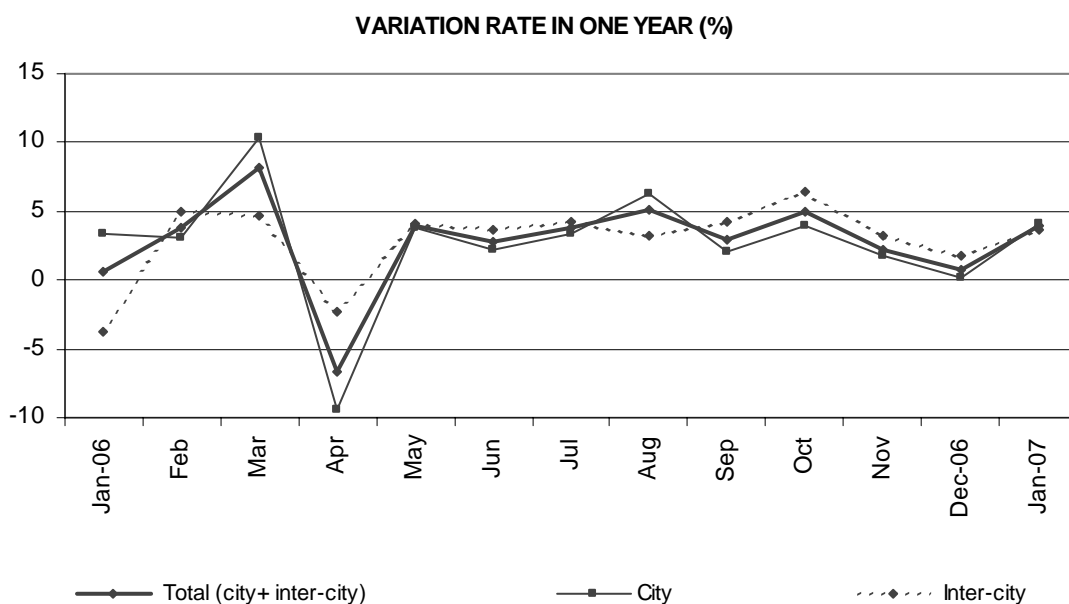
On the other hand, **the inter-city transport** was used by more than 156 million passengers, (a yearly increase of 3.7%).

	No. of passengers (thousands)	% rate	
		Same month last year	In one year
City transport			
Total	272,800	4.10	4.10
Buses	168,027	4.47	4.47
- Scheduled ¹	166,973	4.48	4.48
- Non-scheduled	1,054	4.09	4.09
Metropolitan	104,773	3.51	3.51
Inter-city transport			
Total	156,224	3.71	3.71
Road transport	101,680	5.13	5.13
- Scheduled ¹	89,554	4.94	4.94
- Non-scheduled	12,126	6.57	6.57
Railway transport	51,043	0.46	0.46
Air transport (domestic) ³	2,963	10.31	10.31
Sea transport (cabotage) ^{2, 3}	538	27.80	27.80

(1) City and Inter-city transport by road includes: general scheduled and especial scheduled (scholars and workers).

(2) Disembarked passengers only.

(3) Estimated data.



The general scheduled city bus service increased 4.3%

More than 158 million passengers used the general scheduled city bus service, which means an increase of 4.3% in the inter-annual rate.

By Autonomous Communities, there were remarkable increases in Castilla – La Mancha (8.2%), Cataluña (7.6%) and Aragón (7.5%).

General scheduled city bus service

	No. of passengers (thousands)	% rate	
		Same month last year	In one year
TOTAL	158,188	4.29	4.29
Andalucía	19,451	1.95	1.95
Aragón	10,995	7.46	7.46
Asturias (Principado de)	3,433	7.21	7.21
Canarias	5,108	3.90	3.90
Castilla y León	6,596	3.05	3.05
Castilla - La Mancha	1,285	8.23	8.23
Cataluña	28,766	7.59	7.59
Comunidad Valenciana	12,675	2.71	2.71
Extremadura	1,153	3.41	3.41
Galicia	5,711	3.48	3.48
Madrid (Comunidad de)	46,225	2.64	2.64
Murcia (Región de)	1,895	0.56	0.56
País Vasco	6,293	2.75	2.75
Otras ¹	8,602	8.82	8.82

(1) In order to protect the statistical secrecy, Autonomous Communities are grouped in those cases in which data at a company level could be identified.

The special scheduled city bus service increased 7.9%

In January, more than six million five thousand scholars used a special and scheduled city bus line, 8.9% more than in the same month of 2006.

On the other hand, more than 2.2 million workers used a special and scheduled city bus line, 4.9% more than in January 2006.

Special scheduled city bus service

	No. of passengers (thousands)	% rate	
		Same month last year	In one year
TOTAL	8,785	7.85	7.85
Scholars	6,542	8.90	8.90
Workers	2,243	4.92	4.92

The number of passengers using the metropolitan increased 3.5% in January with regard to the same month in 2006. The number of passengers increased in all the Spanish metropolitan services. There were remarkable increases in Bilbao (7%) and in Valencia (5.4%).

Metropolitan

	No. of passengers (thousands)	% rate	
		Same month last year	In one year
TOTAL	104,773	3.51	3.51
Barcelona	30,943	4.22	4.22
Bilbao	7,523	6.99	6.99
Madrid	60,526	2.57	2.57
Valencia	5,781	5.37	5.37

The inter-city transport increased 3.7% with regard to January 2006.

During January the transport by road increased 5.1%, while the transport by rail increased 0.5% with regard to January 2006.

There were increases in the transport by road: in the special scheduled transport (7.6%), in the non-scheduled transport (6.6%) and in the general scheduled transport (3.5%).

Inter-city Transport

	No. of passengers (thousands)	% rate	
		Same month last year	In one year
TOTAL	156,224	3.71	3.71
Road transport	101,680	5.13	5.13
Scheduled	56,816	3.49	3.49
Special scheduled	32,738	7.55	7.55
- Scholars	23,801	9.39	9.39
- Workers	8,937	2.96	2.96
Non-scheduled	12,126	6.57	6.57
Railway transport	51,043	0.46	0.46
RENFE	43,824	0.00	0.00
- AVE - Long Distance ²	1,285	2.07	2.07
- Regional ³	2,428	9.52	9.52
- Local	40,111	-0.59	-0.59
Narrow gauge trains	7,219	3.39	3.39
Air (Domestic) ¹	2,963	10.31	10.31
Sea transport (Cabotage) ¹	538	27.80	27.80

(1) Estimated data

(2) Long Distance includes long distance and long distance high speed.

(3) Regional includes regional and regional high speed.

More information in INEbase – www.ine.es All the press releases in: www.ine.es/prensa/prensa.htm

Press office: Telephone: 91 583 93 63 / 94 08 – Fax: 91 583 90 87 - gprensa@ine.es

Information area: Telephone: 91 583 91 00 – Fax: 91 583 91 58 – www.ine.es/infoine