

Transport of passengers statistics

February 2007. *Provisional data*

In February, the number of passengers using city transport increased 2.2% in one year

The number of passengers using the inter-city transport increased 2.5%

More than 261.5 million passengers used **the city transport** in February, (a yearly increase of 2.2%). There was an increase of 2.0% in the metropolitan service and an increase of 2.4% in the city bus service in February 2007

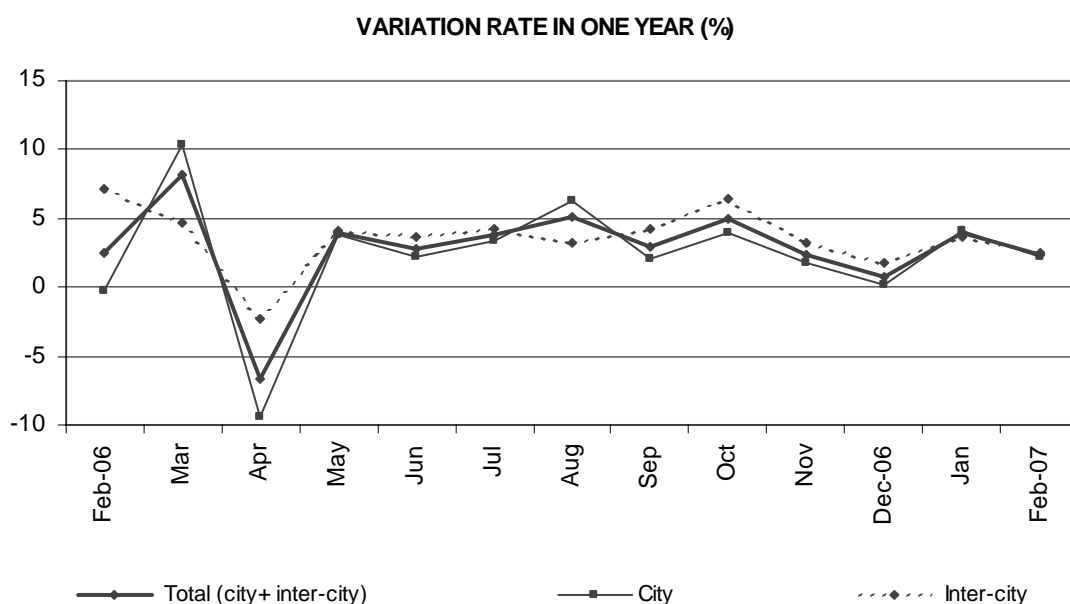
On the other hand, **the inter-city transport** was used by more than 167 million passengers, (a yearly increase of 2.5%)

	No. of passengers (thousands)	% rate	
		Same month last year	In one year
City transport			
Total	261,589	2.24	3.18
Buses	161,365	2.35	3.42
- Scheduled ¹	160,254	2.30	3.40
- Non-scheduled	1,111	10.62	7.34
Metropolitan	100,224	2.05	2.79
Inter-city transport			
Total	167,053	2.47	3.02
Road transport	114,438	4.18	4.63
- Scheduled ¹	98,492	4.43	4.67
- Non-scheduled	15,946	2.66	4.32
Railway transport	49,178	-1.67	-0.57
Air transport (domestic)	3,024	8.91	7.55
Sea transport (cabotage) ^{2, 3}	413	8.12	8.12

(1) City and Inter-city transport by road includes: general scheduled and especial scheduled (scholars and workers).

(2) Disembarked passengers only.

(3) Estimated data.



The general scheduled city bus service increased 2.2%

Nearly 151 million passengers used the general scheduled city bus service, which means an increase of 2.2% in the inter-annual rate.

By Autonomous Communities, there were remarkable increases in Castilla – La Mancha (8.2%), Galicia (6.9%) and País Vasco (5.9%).

General scheduled city bus service

	No. of passengers (thousands)	% rate	
		Same month last year	In one year
TOTAL	150,925	2.20	3.26
Andalucía	18,284	0.33	1.16
Aragón	10,679	5.52	6.49
Asturias (Principado de)	3,099	3.94	5.63
Canarias	4,395	3.06	3.51
Castilla y León	6,136	2.83	2.94
Castilla - La Mancha	1,307	8.25	8.24
Cataluña	28,504	3.57	5.55
Comunidad Valenciana	12,156	2.58	2.65
Extremadura	1,061	-2.19	0.65
Galicia	5,150	6.91	5.08
Madrid (Comunidad de)	44,248	-0.93	0.87
Murcia (Región de)	1,795	1.64	1.08
País Vasco	5,901	5.90	4.25
Otras ¹	8,210	7.54	8.19

(1) In order to protect the statistical secrecy, Autonomous Communities are grouped in those cases in which data at a company level could be identified.

The special scheduled city bus service increased 3.9%

In February, more than seven million three thousand scholars used a special and scheduled city bus line, 4.8% more than in the same month of 2006.

On the other hand, nearly 2.3 million workers used a special and scheduled city bus line, 1.5% more than in February 2006.

Special scheduled city bus service

	No. of passengers (thousands)	% rate	
		Same month last year	In one year
TOTAL	9,329	3.93	5.80
Scholars	7,034	4.77	6.72
Workers	2,295	1.45	3.14

The number of passengers using the metropolitan increased 2% in February with regard to the same month in 2006. The number of passengers increased in all the Spanish metropolitan services. There were remarkable increases in Bilbao (9.1%) and in Valencia (4.2%).

Metropolitan

	No. of passengers (thousands)	% rate	
		Same month last year	In one year
TOTAL	100,224	2.05	2.79
Barcelona	29,983	2.12	3.17
Bilbao	7,169	9.14	8.03
Madrid	57,471	0.99	1.80
Valencia	5,601	4.19	4.79

The inter-city transport increased 2.5% with regard to February 2006.

The number of travellers using the bus for their inter-city transport increases 4.2% with respect to the same month of the previous year, while the number of train passengers decreases by 1.7%.

Within road transport, increases are registered in all types of transport, both in special scheduled (4.6%), as in scheduled (4.3%) and non-scheduled transport (2.7%).

On another hand, it is worth mentioning the increase in air transport, with an interannual variation rate of 8.9%.

Inter-city Transport

	No. of passengers (thousands)	% rate	
		Same month last year	In one year
TOTAL	167,053	2.47	3.02
Road transport	114,438	4.18	4.63
Scheduled	59,850	4.30	3.91
Special scheduled	38,642	4.63	5.95
- Scholars	28,820	5.65	7.31
- Workers	9,822	1.74	2.32
Non-scheduled	15,946	2.66	4.32
Railway transport	49,178	-1.67	-0.57
RENFE	42,383	-2.05	-1.02
- AVE - Long Distance ²	1,263	-5.18	-1.66
- Regional ³	2,322	3.20	6.34
- Local	38,798	-2.24	-1.41
Narrow gauge trains	6,795	0.78	2.28
Air (Domestic)	3,024	8.91	7.55
Sea transport (Cabotage) ¹	413	8.12	8.12

(1) Estimated data

(2) Long Distance includes long distance and long distance high speed.

(3) Regional includes regional and regional high speed.

For further information see **INEbase-www.ine.es** All press releases at: **www.ine.es/prensa/prensa.htm**

Press office: Telephones: 91 583 93 63 / 94 08 – Fax: 91 583 90 87 - gprensa@ine.es

Information Area: Telephone: 91 583 91 00 – Fax: 91 583 91 58 – www.ine.es/infoine