

10 May 2007

## Transport of passengers statistics

March 2007. *Provisional data*

**In March, the number of passengers using city transport increased 1.8% in one year**

**The number of passengers using the inter-city transport increased 3.6%**

More than 294 million passengers used **the city transport** in March, (a yearly increase of 1.8%). There were increases of 1.2% in the city bus service and of 2.8% in the metropolitan service in March 2006.

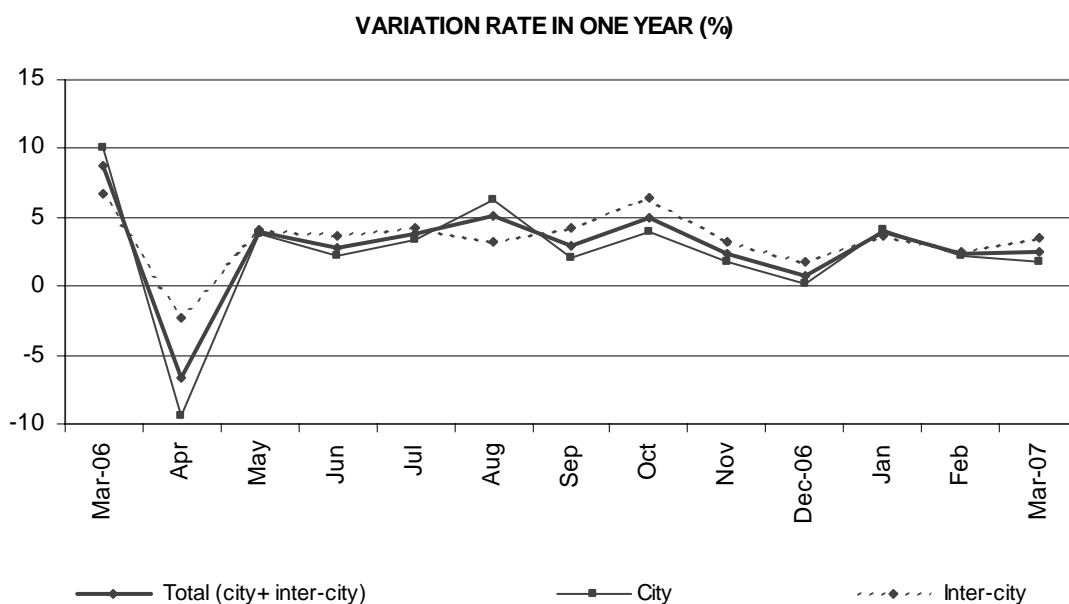
On the other hand, **the inter-city transport** was used by more than 185 million passengers, (a yearly increase of 3.6%).

	No. of passengers (thousands)	% rate	
		Same month last year	In one year
<b>City transport</b>			
<b>Total</b>	<b>294,621</b>	<b>1.79</b>	<b>2.68</b>
Buses	181,043	1.18	2.62
- Scheduled 1	179,617	1.15	2.59
- Non-scheduled	1,426	4.63	6.25
Metropolitan	113,578	2.78	2.79
<b>Inter-city transport</b>			
<b>Total</b>	<b>185,250</b>	<b>3.58</b>	<b>3.22</b>
Road transport	126,511	3.01	4.02
- Scheduled 1	105,869	3.19	4.13
- Non-scheduled	20,642	2.09	3.36
Railway transport	54,679	4.57	1.18
Air transport (domestic) 3	3,579	8.91	8.06
Sea transport (cabotage) 2, 3	481	8.15	8.14

1 City and Inter-city transport by road includes: general scheduled and especial scheduled (scholars and workers).

2 Disembarked passengers only.

3 Estimated data.



## The general scheduled city bus service increased 1.1%

More than 169 million passengers used the general scheduled city bus service, which means an increase of 1.1% in the inter-annual rate.

By Autonomous Communities, there were remarkable increases in Castilla – La Mancha (14.6%), Cataluña (5.4%) and Castilla y León (2.7%).

### General scheduled city bus service

	No. of passengers (thousands)	% rate	
		Same month last year	In one year
<b>TOTAL</b>	<b>169,191</b>	<b>1.10</b>	<b>2.49</b>
Andalucía	20,277	-1.87	0.08
Aragón	11,730	2.38	5.01
Asturias (Principado de)	3,534	1.40	4.11
Canarias	5,082	-2.76	1.24
Castilla y León	7,132	2.74	2.87
Castilla-La Mancha	1,510	14.58	10.49
Cataluña	30,857	5.42	5.51
Comunitat Valenciana	13,739	0.13	1.74
Extremadura	1,289	-5.24	-1.60
Galicia	6,034	-0.43	3.04
Madrid (Comunidad de)	50,281	-0.73	0.29
Murcia (Región de)	1,981	-2.44	-0.18
País Vasco	6,423	2.16	3.52
Others <sup>1</sup>	9,322	5.08	7.06

<sup>1</sup> In order to protect the statistical secrecy, Autonomous Communities are grouped in those cases in which data at a company level could be identified.

### The special scheduled city bus service increased 1.9%

In March, more than 7.8 million scholars used a special and scheduled city bus line, 1.6% more than in the same month of 2006.

On the other hand, more than 2.5 million workers used a special and scheduled city bus line, 2.8% more than in March 2006.

#### Special scheduled city bus service

	No. of passengers (thousands)	% rate	
		Same month last year	In one year
<b>TOTAL</b>	<b>10,426</b>	<b>1.93</b>	<b>4.35</b>
Scholars	7,861	1.63	4.80
Workers	2,565	2.85	3.03

The number of passengers using the metropolitan increased 2.8% in March with regard to the same month in 2006. The number of passengers increased in all the Spanish metropolitan services, except in Valencia. There were remarkable increases in Bilbao (7.2%) and in Madrid (3.3%).

#### Metropolitan

	No. of passengers (thousands)	% rate	
		Same month last year	In one year
<b>TOTAL</b>	<b>113,578</b>	<b>2.78</b>	<b>2.79</b>
Barcelona	34,022	2.06	2.77
Bilbao	8,020	7.18	7.73
Madrid	64,255	3.29	2.32
Valencia	7,281	-2.65	1.75

**The inter-city transport increased 3.6%** with regard to March 2006.

During March the transport by road increased 3%, while the transport by rail increased 4.6% with regard to March 2006.

There were increases in the transport by road: in the special scheduled transport (2.5%), in the non-scheduled transport (2.1%) and in the general scheduled transport (3.6%).

## Inter-city Transport

	No. of passengers (thousands)	% rate	
		Same month last year	In one year
<b>TOTAL</b>	<b>185,250</b>	<b>3.58</b>	<b>3.22</b>
<b>Road transport</b>	<b>126,511</b>	<b>3.01</b>	<b>4.02</b>
Scheduled	64,460	3.65	3.81
Special scheduled	41,409	2.47	4.65
- Scholars	30,281	1.91	5.27
- Workers	11,128	4.03	2.95
Non-scheduled	20,642	2.09	3.36
<b>Railway transport</b>	<b>54,679</b>	<b>4.57</b>	<b>1.18</b>
RENFE	47,087	5.62	1.23
- AVE - Long Distance 2	1,546	16.24	4.41
- Regional 3	2,655	-8.79	0.37
- Local	42,886	6.31	1.18
Narrow gauge trains	7,592	-1.53	0.91
<b>Air (Domestic) 1</b>	<b>3,579</b>	<b>8.91</b>	<b>8.06</b>
<b>Sea transport (Cabotage) 1</b>	<b>481</b>	<b>8.15</b>	<b>8.14</b>

1 Estimated data

2 Long Distance includes long distance and long distance high speed.

3 Regional includes regional and regional high speed.

More information in **INEbase** – [www.ine.es](http://www.ine.es) All the press releases in: [www.ine.es/prensa/prensa.htm](http://www.ine.es/prensa/prensa.htm)

**Press office:** Telephone: 91 583 93 63 / 94 08 – Fax: 91 583 90 87 - [gprensa@ine.es](mailto:gprensa@ine.es)

**Information area:** Telephone: 91 583 91 00 – Fax: 91 583 91 58 – [www.ine.es/infoine](http://www.ine.es/infoine)