

11 May 2017

Passenger Transport Statistics (PT)
March 2017. *Provisional data*

The number of passengers using public transport increases by 12.6% in March, as compared with the same month of the previous year

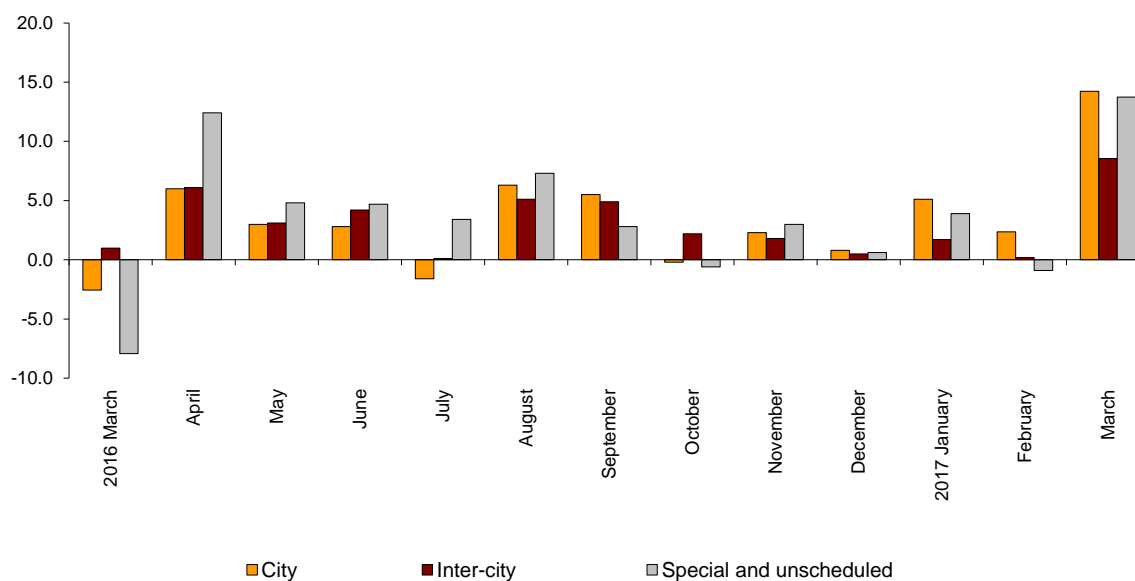
City transport increases by 14.2% in the annual rate and inter-city transport increases by 8.5%

Evolution of passenger transport

More than 442.5 million passengers used public transport in March, 12.6% more than in the same month of 2016.

City transport increased by 14.2% in the annual rate and inter-city transport did so by 8.5%. Within the latter, rail transport was the one that recorded the greatest increase, with a 10.3% rate.

Annual evolution of passengers transport
Type of transport



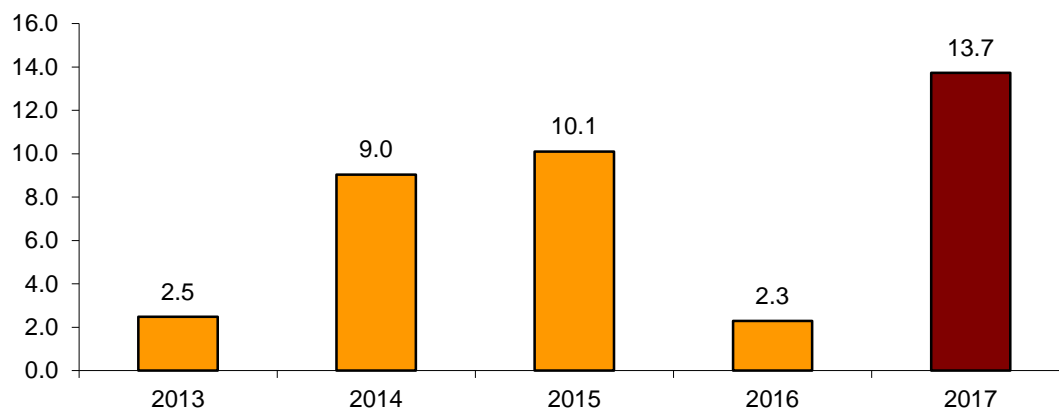
Passengers transport annual evolution, by type of transport

	City	Inter-city	Special and unschedule
2016 March	-2.6	1.0	-7.9
April	6.0	6.1	12.4
May	3.0	3.1	4.8
June	2.8	4.2	4.7
July	-1.6	0.1	3.4
August	6.3	5.1	7.3
September	5.5	4.9	2.8
October	-0.2	2.2	-0.6
November	2.3	1.8	3.0
December	0.8	0.5	0.6
2017 January	5.1	1.7	3.9
February	2.4	0.2	-0.9
March	14.2	8.5	13.7

Monthly rate performance

The variation rate for the number of passengers of public transport in March, as compared with February, was 13.7%. In order to contribute to the analysis and interpretation of data, the evolution of the monthly rate of public transport passengers in the last years is shown in the following chart.

**Evolution of the monthly rate
(month-on-month variation for March as compared with February)**



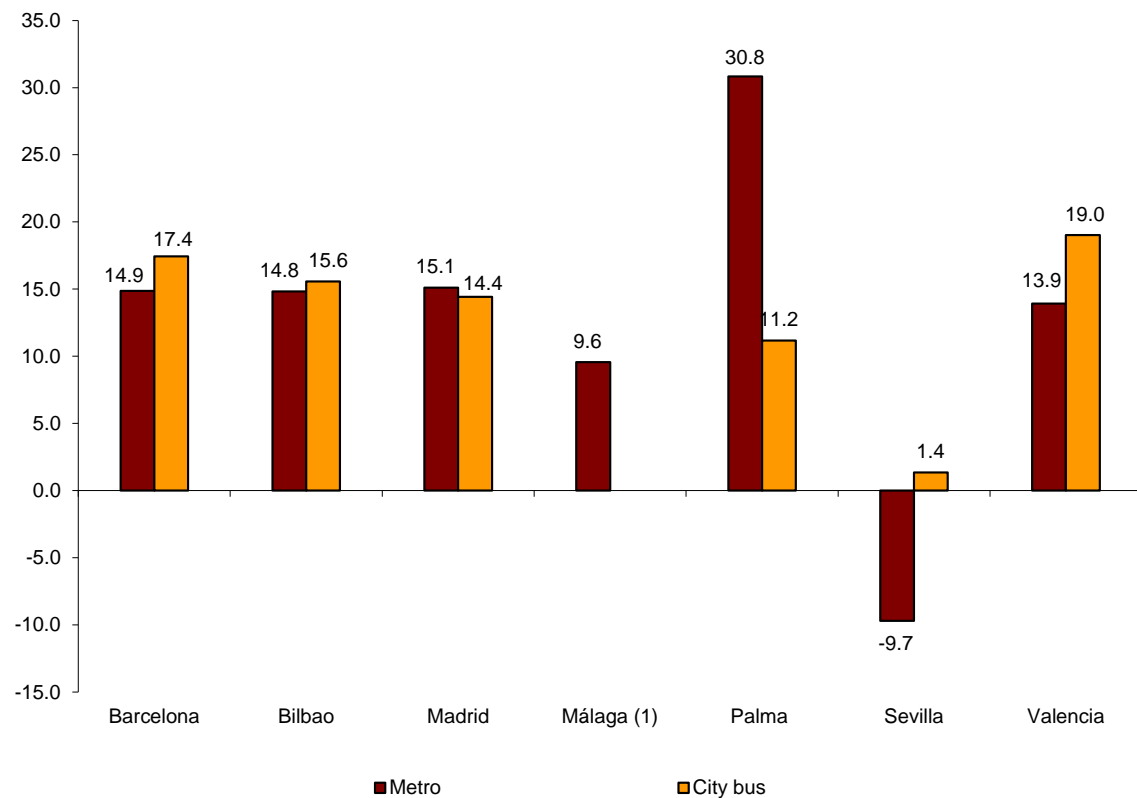
City transport

City transport was used by more than 274.3 million passengers in March, 14.2% more than in the same month of 2016.

Metro transport registered an increase of 14.5%. Metro transport in Palma registered the greatest increase (30.8%), while in Sevilla registered the only decrease (-9.7%).

All cities with metro transport registered positive rates for bus transport. The highest increase was registered in Valencia (19.0%).

Annual rate of city transport passengers in major cities with Metro

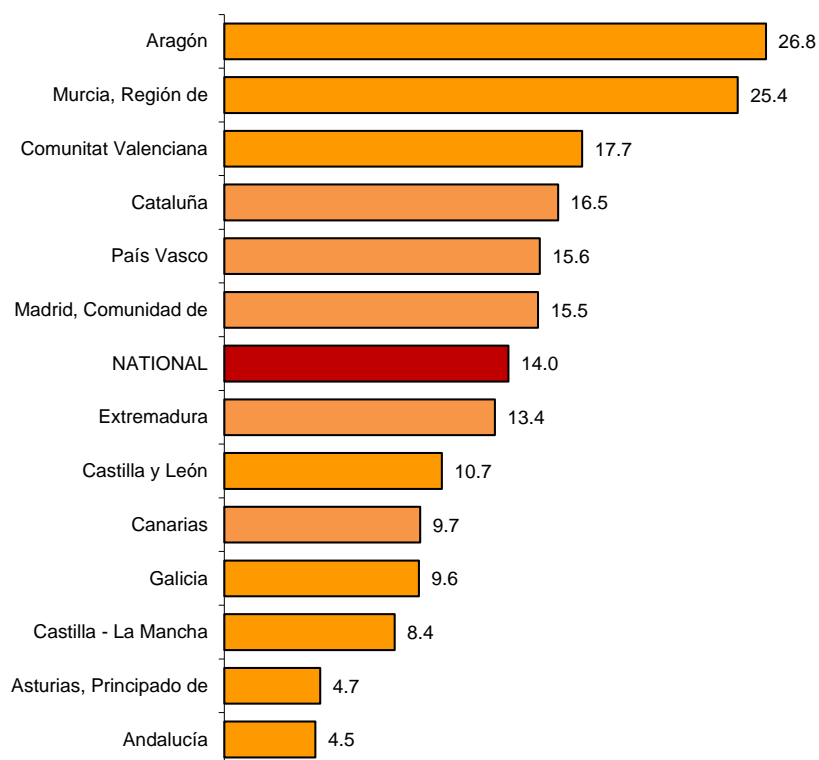


⁽¹⁾ The publication of the city transport by bus in Málaga is not allowed

City transport by bus increased 14.0% with regard to the same month of the previous year.

All Autonomous Communities registered positive rates. The greatest increases were registered in Aragón (26.8%), Región de Murcia (25.4%) and Comunitat Valenciana (17.7%). In turn, Andalucía (4.5%), Principado de Asturias (4.7%) and Castilla-La Mancha (8.4%) recorded the lowest increases.

**Annual rates of the number of passengers
City transport by bus**



⁽¹⁾ In order to maintain statistical secrecy, data of the Autonomous Communities of Illes Balears, Cantabria, Comunidad Foral de Navarra and La Rioja and of the Autonomous Cities of Ceuta and Melilla are not published.

Inter-city transport

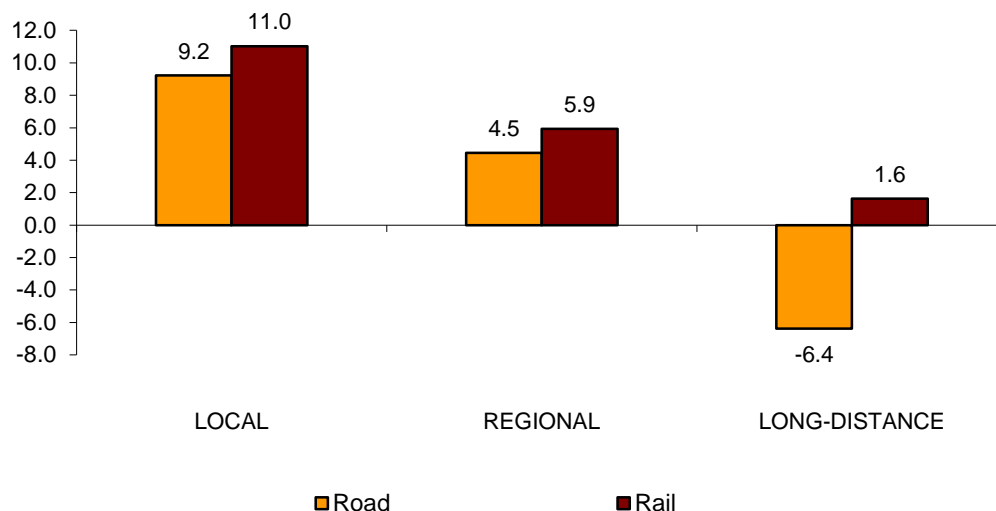
More than 118.8 million passengers used inter-city transport in March, representing a 8.5% increase as compared with the same month of 2016.

By type of transport, rail transport increased by 10.3%, bus transport 7.5% and air transport 3.5%, while maritime transport decreased 10.4%.

Local distance passengers increased by 9.2% for bus transport and by 11.0% for rail transport. Regional distance passengers increased by 4.5% for bus transport and 5.9% for rail transport.

Finally, long distance passengers decreased by 6.4% for bus transport and increased by 1.6% for rail transport. Within the last one, AVE increased by 4.9%.

**Annual rate of the number of passengers
Inter-city transport by type of transport and distance**



Special and unscheduled transport

More than 49.3 million passengers used special and unscheduled transport in March, indicating a increase of 13.7% in the annual rate.

The number of special transport passengers increased 17.0%, reaching more than 34.3 million users. Within this, school transport increased by 23.8%, while work transport decreased by 4.0%.

In turn, unscheduled transport increased 6.9%, as compared with the same month of 2016, reaching more than 14.9 million passengers.

Passenger Transport Statistics

March 2017

Provisional data

1. Passenger transport

	Passengers transported (thousands)	% variation	
		Annual	Year-to-date average
BY TYPE OF TRANSPORT	442,544	12.6	6.2
City transport	274,353	14.2	7.3
Inter-city transport	118,852	8.5	3.9
Special and unscheduled transport	49,339	13.7	5.7

2. City transport

	Passengers transported (thousands)	% variation	
		Annual	Year-to-date average
CITY TRANSPORT	274,353	14.2	7.3
Metro	112,182	14.5	7.9
Bus ⁽¹⁾	162,172	14.0	6.9

⁽¹⁾ This includes trams and funiculars

2.1 City transport in major cities with Metro

		Passengers transported (thousands)	% variation	
			Annual	Year-to-date average
Barcelona	City bus	19,693	17.4	10.2
	Metro	36,921	14.9	8.8
Bilbao	City bus	3,549	15.6	5.1
	Metro	8,155	14.8	4.5
Madrid	City bus	41,156	14.4	6.0
	Metro	57,514	15.1	8.3
Málaga	City bus	(1)	(1)	(1)
	Metro	542	9.6	7.7
Palma	City bus	3,430	11.2	7.0
	Metro	79	30.8	8.7
Sevilla	City bus	7,468	1.4	-1.1
	Metro	1,492	-9.7	-2.4
Valencia	City bus	9,196	19.0	12.9
	Metro	7,480	13.9	7.1

(1) Publication thereof is not allowed

2.2 Urban transport by bus by Autonomous Cities and Communities

	Passengers transported (thousands)	% variation	
		Annual	Year-to-date average
NATIONAL	162,172	14.0	6.9
Andalucía	20,754	4.5	0.7
Aragón	11,147	26.8	15.8
Asturias, Principado de	2,918	4.7	-0.7
Balears, Illes	(1)	(1)	(1)
Canarias	5,272	9.7	5.9
Cantabria	(1)	(1)	(1)
Castilla y León	6,301	10.7	3.2
Castilla - La Mancha	1,782	8.4	1.0
Cataluña	27,282	16.5	9.1
Comunitat Valenciana	12,757	17.7	10.6
Extremadura	1,060	13.4	4.9
Galicia	5,557	9.6	4.4
Madrid, Comunidad de	46,941	15.5	7.1
Murcia, Región de	1,918	25.4	11.6
Navarra, Comunidad Foral de	(1)	(1)	(1)
País Vasco	8,273	15.6	6.4
Rioja, La	(1)	(1)	(1)
Ceuta	(1)	(1)	(1)
Melilla	(1)	(1)	(1)

3. Inter-city transport

	Passengers transported (thousands)	% variation	
		Annual	Year-to-date average
INTER-CITY TRANSPORT	118,852	8.5	3.9
Road	59,696	7.5	2.0
Local	41,735	9.2	2.3
Regional	16,675	4.5	1.6
Long-distance	1,287	-6.4	-2.2
Rail ⁽¹⁾	55,716	10.3	6.1
Local rail	50,246	11.0	6.6
Regional rail	2,742	5.9	0.8
Long-distance rail	2,728	1.6	2.4
AVE train	1,820	4.9	3.9
Rest of long-distance rail	908	-4.4	-0.3
Air (domestic)	2,836	3.5	3.2
Maritime (cabotage)	604	-10.4	-3.8

⁽¹⁾ Local rail includes all rail operators and regional and long-distance rail include only RENFE

4. Special and unscheduled transport

	Passengers transported (thousands)	% variation	
		Annual	Year-to-date average
SPECIAL AND UNSCHEDULED TRANSPORT	49,339	13.7	5.7
Special	34,355	17.0	6.0
School	27,463	23.8	9.3
Work	6,893	-4.0	-5.0
Unscheduled	14,983	6.9	5.0

For further information see INEbase - www.ine.es/en/ All press releases at: www.ine.es/prensa/prensa_en.htm

Press Office: Telephone numbers: 91 583 93 63 / 94 08 – Fax: 91 583 90 87 - gprensa@ine.es

Information Area: Telephone number: 91 583 91 00 – Fax: 91 583 91 58 – www.ine.es/infoine