

8 June 2007

## Transport of passengers statistics

April 2007. *Provisional data*

**In April, the number of passengers using city transport increased 3.3% in one year**

**The number of passengers using the inter-city transport increased 2.5%**

More than 256 million passengers used **the city transport in April**, (a yearly increase of 3.3%). There were increases of 1.7% in the city bus service and of 6% in the metropolitan service in April 2006.

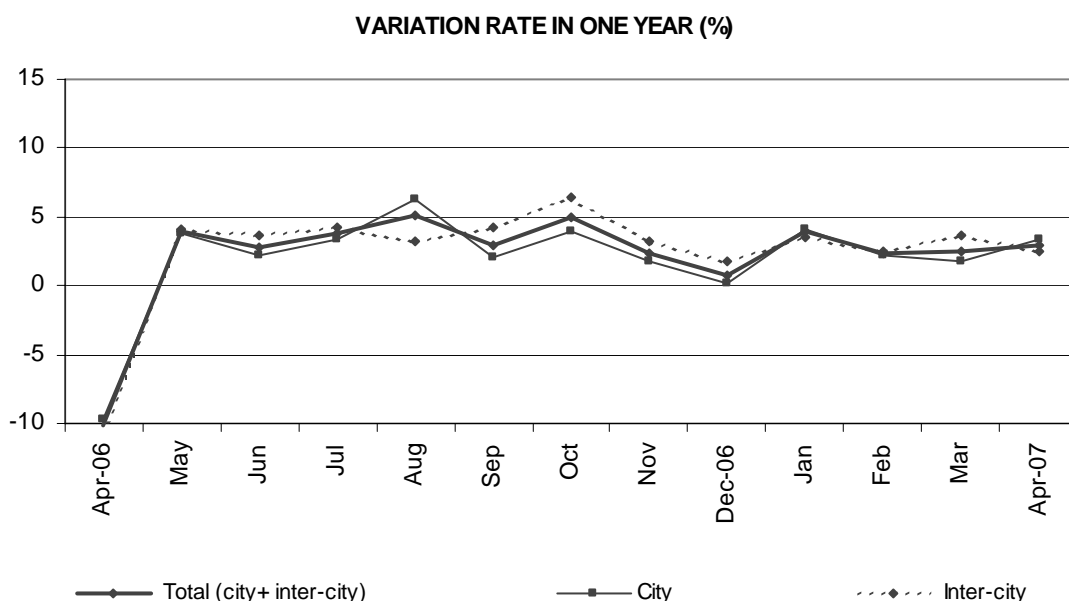
On the other hand, **the inter-city transport** was used by more than 161 million passengers, (a yearly increase of 2.5%).

	No. of passengers (thousands)	% rate	
		Same month last year	In one year
<b>City transport</b>			
<b>Total</b>	<b>256,399</b>	<b>3.33</b>	<b>2.83</b>
Buses	159,285	1.75	2.41
- Scheduled <sup>1</sup>	157,845	1.76	2.39
- Non-scheduled	1,440	0.59	4.56
Metropolitan	97,114	6.04	3.53
<b>Inter-city transport</b>			
<b>Total</b>	<b>161,340</b>	<b>2.47</b>	<b>3.04</b>
Road transport	107,544	2.64	3.69
- Scheduled <sup>1</sup>	89,331	2.49	3.74
- Non-scheduled	18,213	3.44	3.38
Railway transport	49,288	1.51	1.26
Air transport (domestic)	3,659	7.59	8.42
Sea transport (cabotage) <sup>2, 3</sup>	849	19.17	14.65

<sup>1</sup> City and Inter-city transport by road includes: general scheduled and especial scheduled (scholars and workers).

<sup>2</sup> Disembarked passengers only.

<sup>3</sup> Estimated data.



## The general scheduled city bus service increased 1.7%

More than 150 million passengers used the general scheduled city bus service, which means an increase of 1.7% in the inter-annual rate.

By Autonomous Communities, there were remarkable increases in Castilla-La Mancha (11.1%), Murcia (9.7%) and Aragón (6%).

## General scheduled city bus service

	No. of passengers (thousands)	% rate	
		Same month last year	In one year
<b>TOTAL</b>	<b>150,071</b>	<b>1.72</b>	<b>2.30</b>
Andalucía	22,467	2.60	0.77
Aragón	10,223	6.02	5.25
Asturias (Principado de)	3,157	5.45	4.42
Canarias	4,991	3.58	1.82
Castilla y León	5,847	3.24	2.96
Castilla-La Mancha	1,327	11.13	10.65
Cataluña	26,651	3.10	4.94
Comunitat Valenciana	11,477	5.11	2.49
Extremadura	1,056	0.67	-1.08
Galicia	5,212	1.98	2.79
Madrid (Comunidad de)	41,913	-3.76	-0.67
Murcia (Región de)	1,685	9.72	1.93
País Vasco	5,560	1.68	3.09
Others <sup>1</sup>	8,505	8.56	7.42

<sup>1</sup> In order to protect the statistical secrecy, Autonomous Communities are grouped in those cases in which data at a company level could be identified.

### The special scheduled city bus service increased 2.4%

In April, more than 5.6 million scholars used a special and scheduled city bus line, 2.8% more than in the same month of 2006.

On the other hand, more than 2.1 million workers used a special and scheduled city bus line, 1.3% more than in April 2006.

### Special scheduled city bus service

	No. of passengers (thousands)	% rate	
		Same month last year	In one year
<b>TOTAL</b>	<b>7,774</b>	<b>2.42</b>	<b>3.93</b>
Scholars	5,644	2.85	4.38
Workers	2,130	1.31	2.63

The number of passengers using the metropolitan increased 6% in April with regard to the same month in 2006. The number of passengers increased in all the Spanish metropolitan services. There were remarkable increases in Bilbao (10.9%) and in Valencia (9.3%).

### Metropolitan

	No. of passengers (thousands)	% rate	
		Same month last year	In one year
<b>TOTAL</b>	<b>97,114</b>	<b>6.04</b>	<b>3.53</b>
Barcelona	30,137	5.17	3.34
Bilbao	6,514	10.94	8.42
Madrid	55,059	5.66	3.08
Valencia	5,404	9.28	3.35

## The inter-city transport increased 2.5% with regard to April 2006.

The interannual air transport rate increased 7.6%.

The number of travellers using the bus service for inter-city transport increased 2.6%, as compared to the same month of the previous year. Likewise, the number of passengers using Spanish railway increases 1.5%. Narrow gauge trains registered a noteworthy 5.9% interannual rate increase.

All types of road transport registered rate increases, 2%, 3.5% and 3.4% for scheduled general, special general and non-scheduled transports, respectively.

### Inter-city Transport

	No. of passengers (thousands)	% rate	
		Same month last year	In one year
<b>TOTAL</b>	<b>161,340</b>	<b>2.47</b>	<b>3.04</b>
<b>Road transport</b>	<b>107,544</b>	<b>2.64</b>	<b>3.69</b>
Scheduled	58,109	1.96	3.36
Special scheduled	31,222	3.48	4.39
- Scholars	21,888	3.38	4.87
- Workers	9,334	3.69	3.12
Non-scheduled	18,213	3.44	3.38
<b>Railway transport</b>	<b>49,288</b>	<b>1.51</b>	<b>1.26</b>
RENFE	42,586	0.85	1.14
- AVE - Long Distance <sup>2</sup>	1,619	1.76	3.65
- Regional <sup>3</sup>	2,726	3.81	1.27
- Local	38,241	0.61	1.04
Narrow gauge trains	6,702	5.89	2.06
<b>Air (Domestic)</b>	<b>3,659</b>	<b>7.59</b>	<b>8.42</b>
<b>Sea transport (Cabotage) <sup>1</sup></b>	<b>849</b>	<b>19.17</b>	<b>14.65</b>

<sup>1</sup> Estimated data

<sup>2</sup> Long Distance includes long distance and long distance high speed.

<sup>3</sup> Regional includes regional and regional high speed.

More information in **INEbase** – [www.ine.es](http://www.ine.es) All the press releases in: [www.ine.es/prensa/prensa.htm](http://www.ine.es/prensa/prensa.htm)

**Press office:** Telephone: 91 583 93 63 / 94 08 – Fax: 91 583 90 87 - [gprensa@ine.es](mailto:gprensa@ine.es)

**Information area:** Telephone: 91 583 91 00 – Fax: 91 583 91 58 – [www.ine.es/infoine](http://www.ine.es/infoine)