

6 July 2007

## Transport of passengers statistics

May 2007. *Provisional data*

**In May, the number of passengers using city transport increased 2% in one year**

**The number of passengers using the inter-city transport increased 1.6%**

More than 292 million passengers used **the city transport** in May, (a yearly increase of 2%). There were increases of 0.3% in the city bus service and of 5% in the metropolitan service in May 2006.

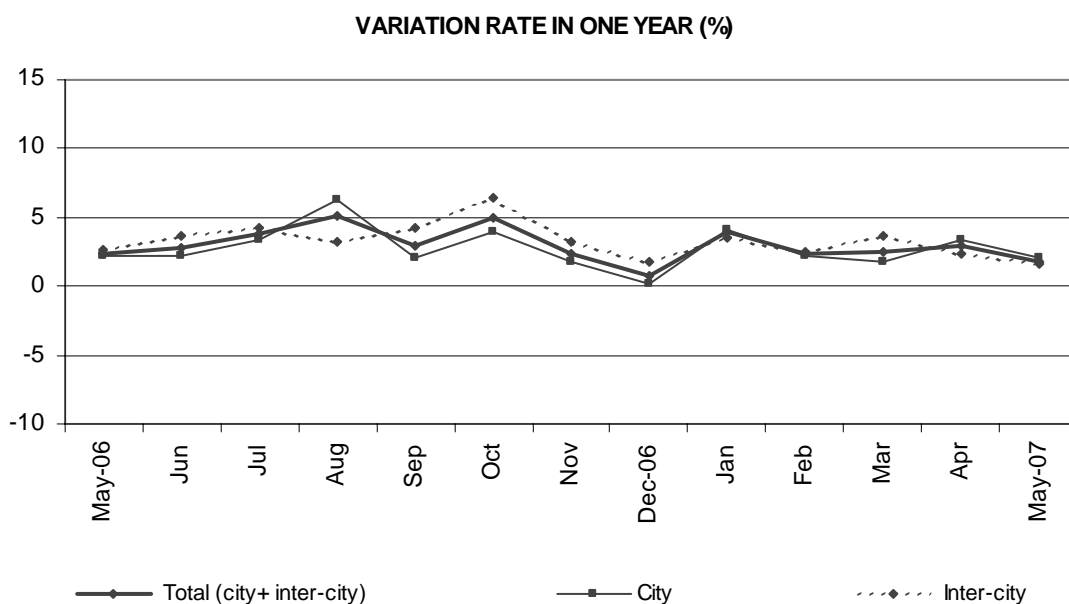
On the other hand, **the inter-city transport** was used by almost than 188 million passengers (a yearly increase of 1.6%).

	No. of passengers (thousands)	% rate	
		Same month last year	In one year
<b>City transport</b>			
<b>Total</b>	<b>292,479</b>	<b>2.01</b>	<b>2.66</b>
Buses	182,144	0.27	1.94
- Scheduled <sup>1</sup>	180,517	0.22	1.92
- Non-scheduled	1,627	6.44	5.02
Metropolitan	110,335	5.04	3.84
<b>Inter-city transport</b>			
<b>Total</b>	<b>187,864</b>	<b>1.57</b>	<b>2.70</b>
Road transport	129,760	2.19	3.35
- Scheduled <sup>1</sup>	104,720	0.63	3.06
- Non-scheduled	25,040	9.24	4.91
Railway transport	53,762	-0.24	0.95
Air transport (domestic) <sup>3</sup>	3,779	7.47	8.21
Sea transport (cabotage) <sup>2, 3</sup>	563	0.70	6.35

(1) City and Inter-city transport by road includes: general scheduled and especial scheduled (scholars and workers).

(2) Disembarked passengers only.

(3) Estimated data.



## Figures for general scheduled city bus service passengers remain the same

Over 169.7 million passengers used the scheduled city bus service, virtually the same figure as that for the same month of the previous year.

By Autonomous Communities, there were remarkable increases in Castilla-La Mancha (10.8%), Aragón (5.3%) and Cataluña (4.8%).

## General scheduled city bus service

	No. of passengers (thousands)	% rate	
		Same month last year	In one year
<b>TOTAL</b>	<b>169,723</b>	<b>0.01</b>	<b>1.81</b>
Andalucía	22,733	-1.89	0.17
Aragón	11,973	5.34	5.27
Asturias (Principado de)	3,202	-9.62	1.35
Canarias	5,419	4.74	2.44
Castilla y León	6,782	-0.31	2.26
Castilla-La Mancha	1,486	10.81	10.68
Cataluña	32,264	4.77	4.90
Comunitat Valenciana	13,786	2.15	2.42
Extremadura	1,324	-2.09	-1.31
Galicia	5,908	-0.28	2.13
Madrid (Comunidad de)	46,393	-5.81	-1.76
Murcia (Región de)	2,055	0.53	1.62
País Vasco	6,600	4.01	3.28
Others <sup>1</sup>	9,798	7.70	7.48

<sup>1</sup> In order to protect the statistical secrecy, Autonomous Communities are grouped in those cases in which data at a company level could be identified.

### The special scheduled city bus service increased 3.6%

In May, more than 7.8 million scholars used a special and scheduled city bus line, 2.6% more than in the same month of 2006.

On the other hand, almost 2.9 million workers used the special and scheduled city bus service, 6.43% more than in May 2006.

### Special scheduled city bus service

	No. of passengers (thousands)	% rate	
		Same month last year	In one year
<b>TOTAL</b>	<b>10,794</b>	<b>3.61</b>	<b>3.86</b>
Scholars	7,898	2.61	3.98
Workers	2,896	6.44	3.52

The number of passengers using the metropolitan increased 5% in May with regard to the same month in 2006. The number of passengers increased in all the Spanish metropolitan services. There were remarkable increases in Bilbao (8.8%) and in Valencia (6.3%).

### Metropolitan

	No. of passengers (thousands)	% rate	
		Same month last year	In one year
<b>TOTAL</b>	<b>110,335</b>	<b>5.04</b>	<b>3.84</b>
Barcelona	33,974	2.54	3.17
Bilbao	7,893	8.78	8.50
Madrid	62,119	5.86	3.64
Valencia	6,349	6.26	3.94

## The inter-city transport increased 1.6% as compared to May 2006.

Over 187.8 million passengers used inter-city transport in May, representing a 1.6% interannual increase.

The number of travellers using the bus service for inter-city transport increased 2.2%, as compared to the same month of the previous year. On the other hand, the number of passengers using Spanish railway decreases 0.2%, although narrow track transport registered a 2.7% increase.

Within road transport, increases were registered in non-scheduled transport (9.2%) and in special scheduled transport (2.7%). On the other hand, general regular transport declined by 0.7% as compared to May 2006.

## Inter-city Transport

	No. of passengers (thousands)	% rate	
		Same month last year	In one year
<b>TOTAL</b>	<b>187,864</b>	<b>1.57</b>	<b>2.70</b>
<b>Road transport</b>	<b>129,760</b>	<b>2.19</b>	<b>3.35</b>
Scheduled	63,392	-0.70	2.48
Special scheduled	41,328	2.74	4.02
- Scholars	30,346	3.26	4.50
- Workers	10,982	1.33	2.73
Non-scheduled	25,040	9.24	4.91
<b>Railway transport</b>	<b>53,762</b>	<b>-0.24</b>	<b>0.95</b>
RENFE	45,890	-0.73	0.75
- AVE - Long Distance <sup>2</sup>	1,606	1.07	3.07
- Regional <sup>3</sup>	2,874	1.41	1.30
- Local	41,410	-0.94	0.63
Narrow gauge trains	7,872	2.71	2.21
<b>Air (Domestic) <sup>1</sup></b>	<b>3,779</b>	<b>7.47</b>	<b>8.21</b>
<b>Sea transport (Cabotage) <sup>1</sup></b>	<b>563</b>	<b>0.70</b>	<b>6.35</b>

(1) Estimated data

(2) Long Distance includes long distance and long distance high speed.

(3) Regional includes regional and regional high speed.

More information in **INEbase** – [www.ine.es](http://www.ine.es) All the press releases in: [www.ine.es/prensa/prensa.htm](http://www.ine.es/prensa/prensa.htm)

**Press office:** Telephone: 91 583 93 63 / 94 08 – Fax: 91 583 90 87 - [gprensa@ine.es](mailto:gprensa@ine.es)

**Information area:** Telephone: 91 583 91 00 – Fax: 91 583 91 58 – [www.ine.es/infoine](http://www.ine.es/infoine)