

6 August 2007

## Transport of passengers statistics

June 2007. *Provisional data*

**In June, the number of passengers using city transport increased 1.2% in one year**

**The number of passengers using inter-city transport increased 2.2%**

Approximately 277.7 million passengers used **city transport** in June of this year, (an increase of 1.2% compared with June 2006). There was an increase of 5% in the underground service and a decrease of 0.9% in the city bus service in June 2006.

Meanwhile, **inter-city transport** was used by more than 178 million passengers, (an increase of 2.2% compared with June 2006).

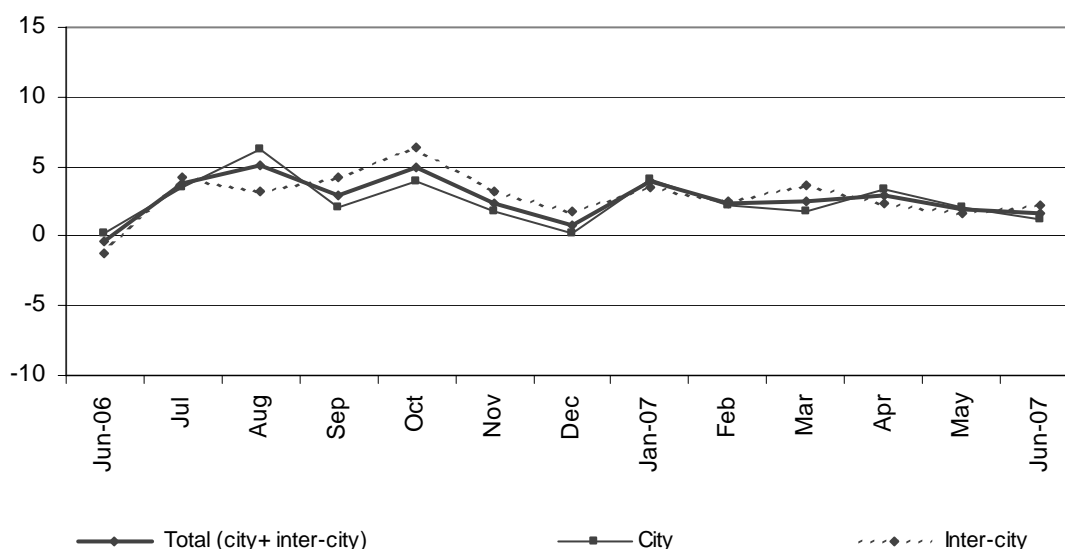
	No. of passengers (thousands)	% rate	
		Same month last year	In one year
<b>City transport</b>			
<b>Total</b>	<b>277,696</b>	<b>1.24</b>	<b>2.42</b>
Buses	173,158	-0.93	1.44
- Scheduled <sup>1</sup>	171,541	-0.96	1.42
- Non-scheduled	1,617	2.45	4.51
Metropolitan	104,538	5.05	4.04
<b>Inter-city transport</b>			
<b>Total</b>	<b>178,099</b>	<b>2.24</b>	<b>2.64</b>
Road transport	122,716	3.45	3.37
- Scheduled <sup>1</sup>	96,067	0.95	2.71
- Non-scheduled	26,649	13.59	6.74
Railway transport	50,565	-1.36	0.56
Air transport (domestic)	3,935	9.59	8.63
Sea transport (cabotage) <sup>2, 3</sup>	883	21.67	13.37

(1) City and Inter-city transport by road includes: general scheduled and especial scheduled (scholars and workers).

(2) Disembarked passengers only.

(3) Estimated data.

VARIATION RATE IN ONE YEAR (%)



## The general scheduled city bus service decreased 1%

In June of this year, around 162.9 million passengers used the general scheduled city bus service, indicating a decrease of 1% compared with the same month the previous year. By Autonomous Communities, there were notable increases in Castilla-La Mancha (11.7%), Murcia (9.4%) and Aragón (6.7%).

## General scheduled city bus service

	No. of passengers (thousands)	% rate	
		Same month last year	In one year
<b>TOTAL</b>	<b>162,894</b>	<b>-1.00</b>	<b>1.32</b>
Andalucía	21,303	-1.35	-0.09
Aragón	11,369	6.74	5.51
Asturias (Principado de)	3,292	1.62	1.40
Canarias	5,097	1.86	2.34
Castilla y León	6,377	0.63	1.99
Castilla-La Mancha	1,433	11.66	10.85
Cataluña	30,184	2.83	4.54
Comunitat Valenciana	13,055	0.20	2.04
Extremadura	1,139	-5.03	-1.93
Galicia	5,633	-0.98	1.59
Madrid (Comunidad de)	45,926	-8.49	-2.95
Murcia (Región de)	1,865	9.44	2.84
País Vasco	6,672	5.96	3.75
Others <sup>1</sup>	9,549	6.45	7.30

<sup>1</sup> In order to protect the statistical secrecy, Autonomous Communities are grouped in those cases in which data at a company level could be identified.

## The special scheduled city bus service decreased 0.3% compared with June 2006

In June, more than 5.8 million passengers used a special and scheduled city bus service for schoolchildren, 4.6% less than in the same month of 2006.

Conversely, more than 2.8 million passengers used a special and scheduled city bus service for commuters, 10% more than in June 2006.

### Special scheduled city bus service

	No. of passengers (thousands)	% rate	
		Same month last year	In one year
<b>TOTAL</b>	<b>8,647</b>	<b>-0.30</b>	<b>3.19</b>
Scholars	5,811	-4.65	2.65
Workers	2,836	10.00	4.69

The number of passengers using underground services increased 5% in June compared with the same month in 2006. The number of passengers increased on all Spanish underground services. There were notable increases in Bilbao (8.9%), in Madrid (5.6%) and in Valencia (5.2%).

### Metropolitan

	No. of passengers (thousands)	% rate	
		Same month last year	In one year
<b>TOTAL</b>	<b>104,538</b>	<b>5.05</b>	<b>4.04</b>
Barcelona	31,107	3.06	3.15
Bilbao	7,386	8.94	8.57
Madrid	60,345	5.63	3.97
Valencia	5,700	5.16	4.13

## Inter-city transport increased 2.2% compared with June 2006

During June more than 178 million passengers used inter-city transport. This represents an increase of 2.2% in the interannual rate.

Regarding road transport, the number of passengers using inter-city buses increased 3.4% compared with June 2006. There were increases in Non-scheduled transport (13.6%) and in Special Scheduled transport (3.2%). On the other hand, general scheduled transport decreased 0.2% compared with June 2006.

Conversely, the number of passengers using Spanish rail services decreased 1.4%, although narrow-gauge train transport increased 2.8%.

Air transport, meanwhile, increased 9.6% compared with June 2006.

## Inter-city Transport

	No. of passengers (thousands)	% rate	
		Same month last year	In one year
<b>TOTAL</b>	<b>178,099</b>	<b>2.24</b>	<b>2.64</b>
<b>Road transport</b>	<b>122,716</b>	<b>3.45</b>	<b>3.37</b>
Scheduled	62,996	-0.18	2.01
Special scheduled	33,071	3.18	3.89
- Scholars	22,674	2.52	4.21
- Workers	10,397	4.66	3.05
Non-scheduled	26,649	13.59	6.74
<b>Railway transport</b>	<b>50,565</b>	<b>-1.36</b>	<b>0.56</b>
RENFE	43,312	-2.02	0.28
- AVE - Long Distance <sup>2</sup>	1,657	3.69	3.18
- Regional <sup>3</sup>	2,706	2.23	1.46
- Local	38,949	-2.53	0.10
Narrow gauge trains	7,253	2.81	2.31
<b>Air (Domestic)</b>	<b>3,935</b>	<b>9.59</b>	<b>8.63</b>
<b>Sea transport (Cabotage) <sup>1</sup></b>	<b>883</b>	<b>21.67</b>	<b>13.37</b>

(1) Estimated data

(2) Long Distance includes long distance and long distance high speed.

(3) Regional includes regional and regional high speed.

More information in INEbase – [www.ine.es](http://www.ine.es) All the press releases in: [www.ine.es/prensa/prensa.htm](http://www.ine.es/prensa/prensa.htm)

**Press office:** Telephone: 91 583 93 63 / 94 08 – Fax: 91 583 90 87 - [gprensa@ine.es](mailto:gprensa@ine.es)

**Information area:** Telephone: 91 583 91 00 – Fax: 91 583 91 58 – [www.ine.es/infoine](http://www.ine.es/infoine)