

6 September 2007

Transport of passengers statistics

July 2007. *Provisional data*

In July, the number of passengers using city transport increases 2.4% in one year

The number of passengers using the inter-city transport increases 2.7%

More than 243.7 million passengers use **the city transport** in July, (a yearly increase of 2.4%). There is an increase of 8.9% in the metropolitan service and a decrease of 1.4% in the city bus service in July 2006.

On the other hand, **the inter-city transport** was used by more than 154.5 million passengers, (a yearly increase of 2.7%).

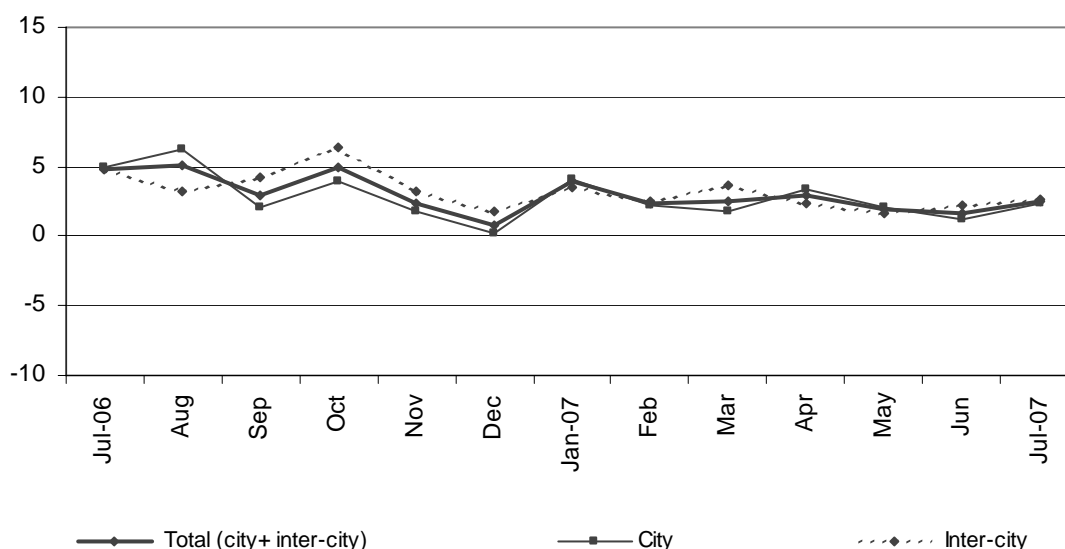
	No. of passengers (thousands)	% rate	
		Same month last year	In one year
City transport			
Total	243,740	2.36	2.41
Buses	149,758	-1.35	1.08
- Scheduled ¹	148,259	-1.38	1.06
- Non-scheduled	1,499	1.38	4.01
Metropolitan	93,982	8.90	4.65
Inter-city transport			
Total	154,567	2.66	2.64
Road transport	100,340	3.94	3.44
- Scheduled ¹	75,547	3.31	2.77
- Non-scheduled	24,793	5.90	6.60
Railway transport ³	48,489	-1.11	0.33
Air transport (domestic)	4,380	14.25	9.56
Sea transport (cabotage) ^{2, 3}	1,358	17.84	13.90

(1) City and Inter-city transport by road includes: general scheduled and especial scheduled (scholars and workers).

(2) Disembarked passengers only.

(3) Estimated data.

VARIATION RATE IN ONE YEAR (%)



The general scheduled city bus service decreases 1.5%

In July, nearly 144.7 million passengers use the general scheduled city bus service, which means a decrease of 1.5% in the inter-annual rate.

By Autonomous Community, there are remarkable increases in Castilla – La Mancha (18.6%), Aragón (6.4%) and Cataluña (4.6%). In the Autonomous Community of Madrid there is a decrease of 13%.

General scheduled city bus service

	No. of passengers (thousands)	% rate	
		Same month last year	In one year
TOTAL	144,661	-1.51	0.94
Andalucía	16,430	1.44	0.08
Aragón	9,964	6.38	5.62
Asturias (Principado de)	3,324	2.87	1.61
Canarias	4,836	-1.53	1.79
Castilla y León	5,590	2.93	2.10
Castilla-La Mancha	1,309	18.59	11.84
Cataluña	28,255	4.61	4.55
Comunitat Valenciana	12,367	2.06	2.04
Extremadura	932	1.64	-1.53
Galicia	5,200	3.66	1.86
Madrid (Comunidad de)	38,641	-12.96	-4.30
Murcia (Región de)	1,612	1.40	2.65
País Vasco	6,216	2.32	3.55
Others ¹	9,985	4.93	6.92

¹ In order to protect the statistical secrecy, Autonomous Communities are grouped in those cases in which data at a company level could be identified.

The special scheduled city bus service increases 4%

In July, more than 1.1 million scholars use special and scheduled city bus line, 1.1% less than in the same month of 2006.

On the other hand, more than 2.4 million workers use special and scheduled city bus line, 5.4% more than in July 2006.

Special scheduled city bus service

	No. of passengers (thousands)	% rate	
		Same month last year	In one year
TOTAL	3,598	3.98	3.24
Scholars	1,162	1.13	2.61
Workers	2,436	5.40	4.78

The number of passengers using the metropolitan increases 8.9% in July with regard to the same month in 2006. The number of passengers increases in all the Spanish metropolitan services. There are remarkable increases in Bilbao (11.7.9%) and Madrid (11.4%).

Metropolitan

	No. of passengers (thousands)	% rate	
		Same month last year	In one year
TOTAL	93,982	8.90	4.65
Barcelona	29,660	4.76	3.37
Bilbao	6,374	11.74	8.96
Madrid	53,300	11.36	4.87
Valencia ¹	4,648	5.16	4.25

(1) Estimated data

The inter-city transport increases 2.2% with regard to June 2006.

In July more than 154.5 million passengers use the inter-city transport. This means an increase of 2.7% in the inter-annual rate.

Regarding the transport by road, the number of passengers increases 3.9% with regard to July 2006. There are increases in the non-scheduled transport (5.9%) and in the special scheduled transport (2.9%). On the other hand, the general scheduled transport increases 3.4% with regard to July 2006.

The air transport increases 14.2% with regard to July 2006.

Inter-city Transport

	No. of passengers (thousands)	% rate	
		Same month last year	In one year
TOTAL	154,567	2.66	2.64
Road transport	100,340	3.94	3.44
General Scheduled	64,922	3.37	2.21
Special scheduled	10,625	2.93	3.84
- Scholars	1,022	0.47	4.19
- Workers	9,603	3.20	3.07
Non-scheduled	24,793	5.90	6.60
Railway transport¹	48,489	-1.11	0.33
RENFE	41,440	-1.94	-0.02
- AVE - Long Distance ²	1,933	3.69	3.27
- Regional ³	2,837	2.23	1.58
- Local	36,670	-2.53	-0.25
Narrow gauge trains	7,049	4.06	2.55
Air (Domestic)	4,380	14.25	9.56
Sea transport (Cabotage)¹	1,358	17.84	13.90

(1) Estimated data

(2) Long Distance includes long distance and long distance high speed.

(3) Regional includes regional and regional high speed.

More information in **INEbase** – www.ine.es All the press releases in: www.ine.es/prensa/prensa.htm

Press office: Telephone: 91 583 93 63 / 94 08 – Fax: 91 583 90 87 - gprensa@ine.es

Information area: Telephone: 91 583 91 00 – Fax: 91 583 91 58 – www.ine.es/infoine