

12 November 2007

Transport of passengers statistics

September 2007. *Provisional data*

In September, the number of passengers using city transport decreased 1% in one year

The number of passengers using the inter-city transport increased 0.7%

More than 248.5 million passengers used **the city transport in September**, (a yearly decrease of 1%). There was an increase of 4.1% in the metropolitan service and a decrease of 3.9% in the city bus service in September 2007.

On the other hand, **the inter-city transport** was used by more than 159.1 million passengers, (a yearly increase of 0.7%).

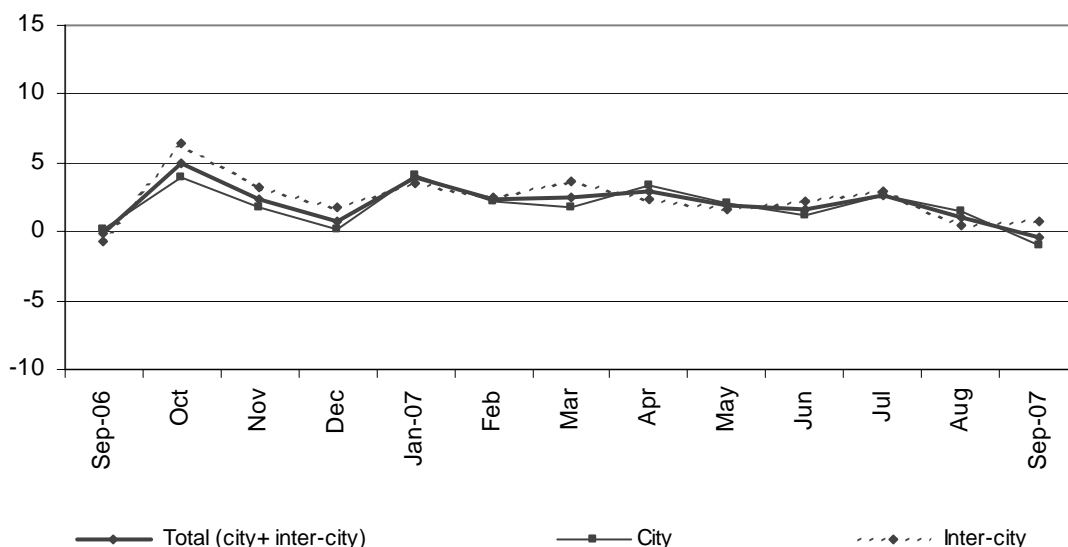
	No. of passengers (thousands)	% rate	
		Same month last year	In one year
City transport			
Total	248,584	-1.04	1.98
Buses	154,503	-3.92	0.11
- Scheduled ¹	153,372	-3.97	0.08
- Non-scheduled	1,131	2.09	3.72
Metropolitan	94,081	4.09	5.18
Inter-city transport			
Total	159,169	0.69	2.26
Road transport	107,635	2.64	3.32
- Scheduled ¹	87,887	2.44	2.63
- Non-scheduled	19,748	3.52	6.52
Railway transport	46,582	-4.14	-0.60
Air transport (domestic)	4,032	8.93	9.54
Sea transport (cabotage) ^{2, 3}	920	1.26	6.60

(1) City and Inter-city transport by road includes: general scheduled and especial scheduled (scholars and workers).

(2) Disembarked passengers only.

(3) Estimated data.

VARIATION RATE IN ONE YEAR (%)



The general scheduled city bus service decreased 4.2%

In September, more than 147.2 million passengers used the general scheduled city bus service, which means a decrease of 4.2% in the inter-annual rate.

By Autonomous Communities, there were remarkable increases in Castilla – La Mancha (13.8%) and Murcia (2.4%). In the Autonomous Communities of Canarias, Comunitat Valenciana and Madrid there were decreases of 7.5%, 4.3% and 13.8% respectively.

General scheduled city bus service

	No. of passengers (thousands)	% rate	
		Same month last year	In one year
TOTAL	147,163	-4.21	-0.07
Andalucía	20,418	-0.72	0.10
Aragón	10,447	0.36	4.90
Asturias (Principado de)	3,177	-0.42	1.36
Canarias	4,443	-7.50	-0.33
Castilla y León	6,177	1.36	1.84
Castilla-La Mancha	1,344	13.83	12.33
Cataluña	27,002	0.68	4.14
Comunitat Valenciana	11,628	-4.28	1.18
Extremadura	1,001	0.03	-1.37
Galicia	5,230	-0.34	1.11
Madrid (Comunidad de)	39,415	-13.83	-6.58
Murcia (Región de)	1,780	2.35	2.32
País Vasco	6,140	0.79	2.70
Others ¹	8,961	4.18	6.64

¹ In order to protect the statistical secrecy, Autonomous Communities are grouped in those cases in which data at a company level could be identified.

The special scheduled city bus service increased 2.2%

In September, more than 5 million scholars used a special and scheduled city bus line, 2.2% more than in the same month of 2006.

On the other hand, more than 1.1 million workers used a special and scheduled city bus line, 2.1% more than in September 2006.

Special scheduled city bus service

	No. of passengers (thousands)	% rate	
		Same month last year	In one year
TOTAL	6,209	2.19	3.26
Scholars	5,078	2.21	2.48
Workers	1,131	2.09	5.11

The number of passengers using the metropolitan increased 4.1% in September with regard to the same month in 2006. The number of passengers increased in all the Spanish metropolitan services. There were remarkable increases in Madrid (6.3%) and Bilbao (3.8%).

Metropolitan

	No. of passengers (thousands)	% rate	
		Same month last year	In one year
TOTAL	94,081	4.09	5.18
Barcelona	28,515	0.46	3.39
Bilbao	6,657	3.82	8.02
Madrid	53,573	6.31	5.76
Valencia	5,336	2.66	5.65

The inter-city transport increased 0.7% with regard to September 2006.

In September more than 159 million passengers used the inter-city transport. This means an increase of 0.7% in the inter-annual rate.

Regarding the transport by road, the number of passengers increased 2.6% with regard to September 2006. On the other hand, there were increases in the non-scheduled transport (3.5%), in the special scheduled transport (2.8%) and in the general scheduled transport (2.3%).

The air transport increased 8.9% with regard to September 2006, while the railway transport decreased 4.1%.

Inter-city Transport

	No. of passengers (thousands)	% rate	
		Same month last year	In one year
TOTAL	159,169	0.69	2.26
Road transport	107,635	2.64	3.32
General Scheduled	61,642	2.30	2.11
Special scheduled	26,245	2.78	3.72
- Scholars	17,097	3.02	4.08
- Workers	9,148	2.33	3.01
Non-scheduled	19,748	3.52	6.52
Railway transport	46,582	-4.14	-0.60
RENFE	39,822	-4.73	-1.09
- AVE - Long Distance ²	1,663	2.46	1.78
- Regional ³	2,658	0.00	1.17
- Local	35,501	-5.37	-1.36
Narrow gauge trains	6,760	-0.52	2.47
Air (Domestic)	4,032	8.93	9.54
Sea transport (Cabotage) ¹	920	1.26	6.60

(1) Estimated data

(2) Long Distance includes long distance and long distance high speed.

(3) Regional includes regional and regional high speed.

More information in INEbase – www.ine.es All the press releases in: www.ine.es/prensa/prensa.htm

Press office: Telephone: 91 583 93 63 / 94 08 – Fax: 91 583 90 87 - gprensa@ine.es

Information area: Telephone: 91 583 91 00 – Fax: 91 583 91 58 – www.ine.es/infoine