

12 December 2007

Transport of passengers statistics

October 2007. *Provisional data*

In October, the number of passengers using city transport increased 3.8% in one year

The number of passengers using the inter-city transport increased 1.6%

More than 296.7 million passengers used **the city transport in October**, (a yearly increase of 3.8%). There were increases of 5.3% in the metropolitan service and of 2.9% in the city bus service in October 2007.

On the other hand, **the inter-city transport** was used by more than 185.5 million passengers, (a yearly increase of 1.6%).

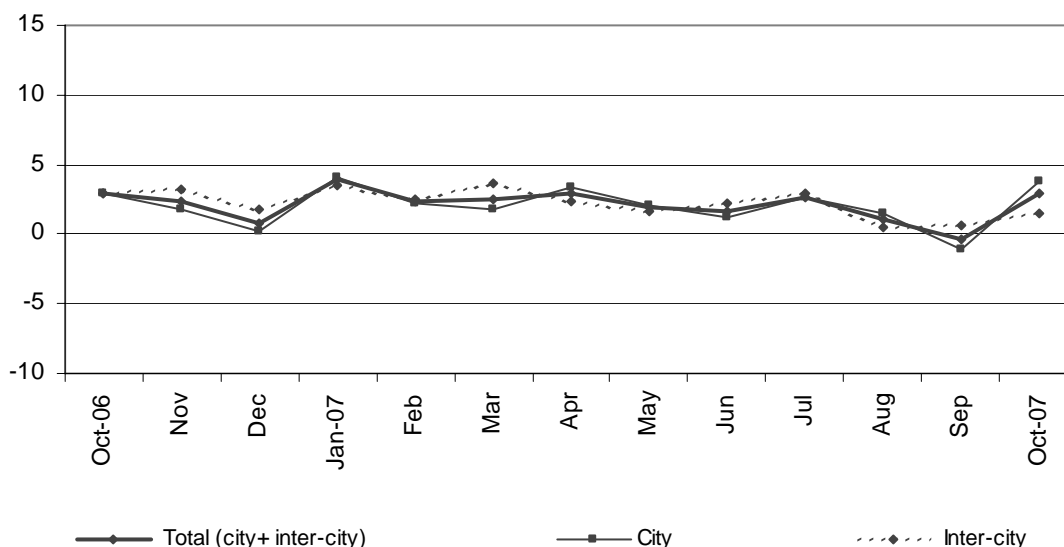
| | No. of passengers (thousands) | % rate | |
|--|----------------------------------|-------------------------|----------------|
| | | Same month last year | In one year |
| City transport | | | |
| Total | 296,784 | 3.77 | 2.18 |
| Buses | 184,978 | 2.85 | 0.41 |
| - Scheduled ¹ | 183,679 | 2.87 | 0.39 |
| - Non-scheduled | 1,299 | 0.25 | 3.37 |
| Metropolitan | 111,806 | 5.31 | 5.19 |
| Inter-city transport | | | |
| Total | 185,556 | 1.55 | 2.18 |
| Road transport | 127,145 | 3.12 | 3.30 |
| - Scheduled ¹ | 107,083 | 2.65 | 2.63 |
| - Non-scheduled | 20,062 | 5.70 | 6.44 |
| Railway transport | 53,909 | -2.42 | -0.80 |
| Air transport (domestic) | 3,853 | 8.46 | 9.43 |
| Sea transport (cabotage) ^{2, 3} | 649 | 2.11 | 6.31 |

(1) City and Inter-city transport by road includes: general scheduled and especial scheduled (scholars and workers).

(2) Disembarked passengers only.

(3) Estimated data.

VARIATION RATE IN ONE YEAR (%)



The general scheduled city bus service increased 2.7%

In October, more than 173.2 million passengers used the general scheduled city bus service, which means an increase of 2.7% in the inter-annual rate.

By Autonomous Communities, there were remarkable increases in Castilla – La Mancha (22.3%), Murcia (8.4%), Extremadura (6.1%) and Cataluña (6%).

General scheduled city bus

| | No. of passengers (thousands) | % rate | |
|--------------------------|----------------------------------|-------------------------|----------------|
| | | Same month last year | In one year |
| TOTAL | 173,284 | 2.65 | 0.22 |
| Andalucía | 22,128 | -1.52 | -0.08 |
| Aragón | 12,788 | 3.75 | 4.76 |
| Asturias (Principado de) | 3,672 | 4.10 | 1.66 |
| Canarias | 5,122 | 2.83 | -0.01 |
| Castilla y León | 6,994 | 2.88 | 1.95 |
| Castilla-La Mancha | 1,664 | 22.28 | 13.45 |
| Cataluña | 32,676 | 6.01 | 4.35 |
| Comunitat Valenciana | 13,242 | 0.77 | 1.13 |
| Extremadura | 1,414 | 6.05 | -0.48 |
| Galicia | 6,334 | 4.39 | 1.47 |
| Madrid (Comunidad de) | 48,097 | -0.33 | -5.92 |
| Murcia (Región de) | 2,094 | 8.44 | 3.00 |
| País Vasco | 6,787 | 5.26 | 2.97 |
| Others ¹ | 10,272 | 9.82 | 6.98 |

¹ In order to protect the statistical secrecy, Autonomous Communities are grouped in those cases in which data at a company level could be identified.

The special scheduled city bus service increased 6.8%

In October, more than 7.8 million scholars used a special and scheduled city bus line, 6.2% more than in the same month of 2006.

On the other hand, more than 2.5 million workers used a special and scheduled city bus line, 8.6% more than in October 2006.

Special scheduled city bus service

| | No. of passengers (thousands) | % rate | |
|--------------|----------------------------------|-------------------------|----------------|
| | | Same month last year | In one year |
| TOTAL | 10,395 | 6.79 | 3.71 |
| Scholars | 7,838 | 6.20 | 2.99 |
| Workers | 2,557 | 8.62 | 5.48 |

The number of passengers using the metropolitan increased 5.3% in October with regard to the same month in 2006. The number of passengers increased in all the Spanish metropolitan services, especially in Bilbao (9.4%), Valencia (6.3%) and Barcelona (6%).

Metropolitan

| | No. of passengers (thousands) | % rate | |
|--------------|----------------------------------|-------------------------|----------------|
| | | Same month last year | In one year |
| TOTAL | 111,806 | 5.31 | 5.19 |
| Barcelona | 34,014 | 6.07 | 3.68 |
| Bilbao | 7,856 | 9.38 | 8.17 |
| Madrid | 63,736 | 4.35 | 5.60 |
| Valencia | 6,200 | 6.25 | 5.71 |

The inter-city transport increased 1.6% with regard to October 2006.

In October more than 185.5 million passengers used the inter-city transport. This means an increase of 1.6% in the inter-annual rate.

Regarding the transport by road, the number of passengers increased 3.1% with regard to October 2006. There were increases in the non-scheduled transport (5.7%), in the special scheduled transport (5.2%) and in the general scheduled transport (1.2%).

The air transport increased 8.5% with regard to October 2006, while the railway transport decreased 2.4%.

Inter-city Transport

| | No. of passengers (thousands) | % rate | |
|--|----------------------------------|-------------------------|----------------|
| | | Same month last year | In one year |
| TOTAL | 185,556 | 1.55 | 2.18 |
| Road transport | 127,145 | 3.12 | 3.30 |
| General Scheduled | 66,620 | 1.18 | 2.01 |
| Special scheduled | 40,463 | 5.18 | 3.91 |
| - Scholars | 29,446 | 6.06 | 4.36 |
| - Workers | 11,017 | 2.91 | 3.00 |
| Non-scheduled | 20,062 | 5.70 | 6.44 |
| Railway transport | 53,909 | -2.42 | -0.80 |
| RENFE | 46,001 | -3.27 | -1.33 |
| - AVE - Long Distance ² | 1,613 | 0.88 | 1.69 |
| - Regional ³ | 2,799 | -3.01 | 0.71 |
| - Local | 41,589 | -3.44 | -1.59 |
| Narrow gauge trains | 7,908 | 2.84 | 2.51 |
| Air (Domestic) | 3,853 | 8.46 | 9.43 |
| Sea transport (Cabotage) ¹ | 649 | 2.11 | 6.31 |

(1) Estimated data

(2) Long Distance includes long distance and long distance high speed.

(3) Regional includes regional and regional high speed.

For further information see INEbase-www.ine.es/en/welcome_en.htm All press releases at: www.ine.es/en/prensa/prensa_en.htm

Press office: Telephone: 91 583 93 63 / 94 08 – Fax: 91 583 90 87 – gprensa@ine.es

Information area: Telephone: 91 583 91 00 – Fax: 91 583 91 58 – www.ine.es/infoine