

28 April 2022

Economically Active Population Survey (EAPS) First Quarter 2022

Main results

- The number of employed persons decreased by 100,200 persons in the first quarter as compared with the previous quarter (-0.50%), standing at 20,084,700 employed persons. In seasonally adjusted terms, the quarterly variation was 1.08%. Employment has grown by 878,000 persons (4.57%) in the last 12 months.
- This quarter, employment fell by 92,900 people in the private sector and 7,400 in the public sector. In the last twelve months, employment has increased by 807,200 persons in the private sector and 70,700 in the public sector.
- Salaried employees decreased this quarter by 45,800. The number of wage-earners with a permanent contract has increased by 164,100 persons, while that of wage-earners with temporary contracts has decreased by 209,800 persons. The number of salaried employees increased by 824,200 in the annual rate (permanent employment increased by 557,700 persons and temporary employment by 266,500). The number of self-employed workers decreased by 55,700 this quarter and it increased by 62,400 in the last 12 months.
- Employment increased this quarter in *Construction*, by 30,300 persons, while it decreased by 68,000 in *Industry*, by 50,100 in *Services* and in by 12,500 in *Agriculture*. Over the last year, employment also rose in the four sectors. A total of 738,700 more persons were employed in *Services*, 55,000 in *Industry*, 54,500 in *Construction*, and 29,700 in *Agriculture*.
- The largest increase in employment this quarter occurred in Comunitat Valenciana (39,900 more). The largest decreases were recorded in Cataluña (-40,900), Andalucía (-32,000) and Canarias (-16,700). In the last year, employment increased in all communities. Andalucía (165,600 more), Comunitat Valenciana (162,000) and Canarias (121,200) presented the highest increases.
- The number of unemployed persons increased by 70,900 this quarter (2.28%), standing at 3,174,700. In seasonally adjusted terms, the quarterly variation was -0.89%. Over the last 12 months, unemployment has decreased by 479,200 persons (-13.12%).
- The unemployment rate stood at 13.65%, which is 32 hundredths more than the previous quarter. Within the last year, this rate has decreased by 2.33 points.
- By autonomous communities, the highest drops in quarterly unemployment took place in Andalucía (-45,900), Canarias (-22,100) and Comunitat Valenciana (-37,900). The greatest increases were registered in Comunidad de Madrid (68,500 more unemployed persons), Illes Balears (23,100) and Canarias (15,500). In annual terms, the greatest decreases in the number of unemployed persons occurred in Andalucía (112,100 fewer), Cataluña (-105,500) and Comunitat Valenciana (-76,400).

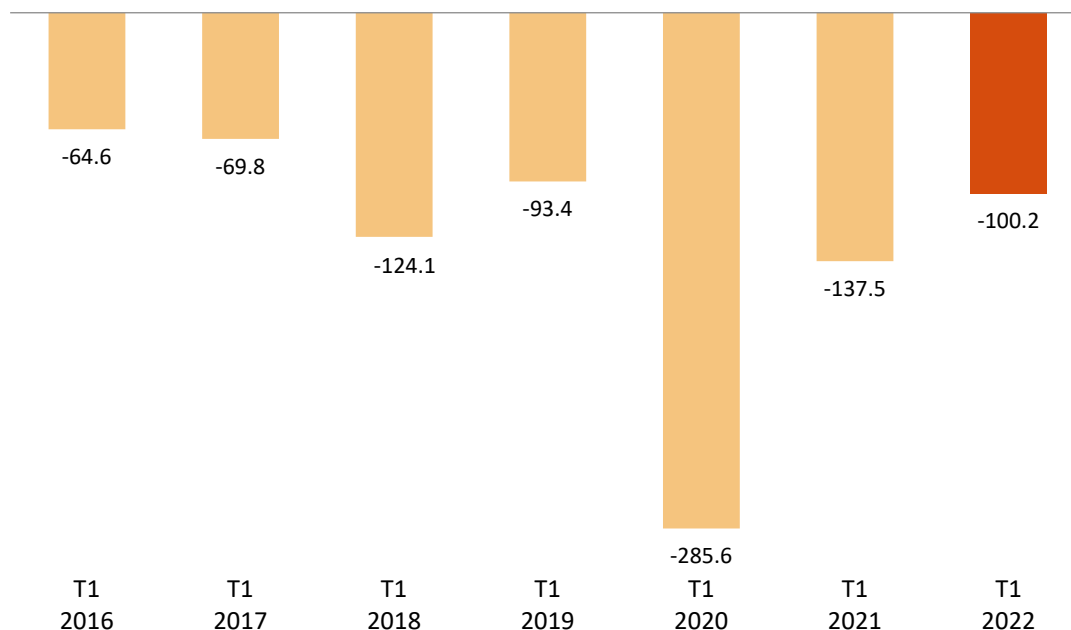
- This quarter, the number of economically active persons decreased by 29,400, up to 23,259,400. The activity rate decreased by 15 hundredths standing at 58.50%. Over the last year, the economically active population has increased by 398,700 persons.

Employment

The number of employed persons decreased by 100,200 persons in the first quarter of 2022, standing at 20,084,700. The quarterly employment variation rate stood at -0.50%.

The employment rate (percentage of employed persons in relation to the population aged 16 and over) stood at 50.51%, representing a decrease of 32 hundredths as compared to the previous quarter. In annual variation, this rate rose by 2.04 points.

Quarterly variation of employment. Thousands.
(Q1 compared with Q4 of last year)



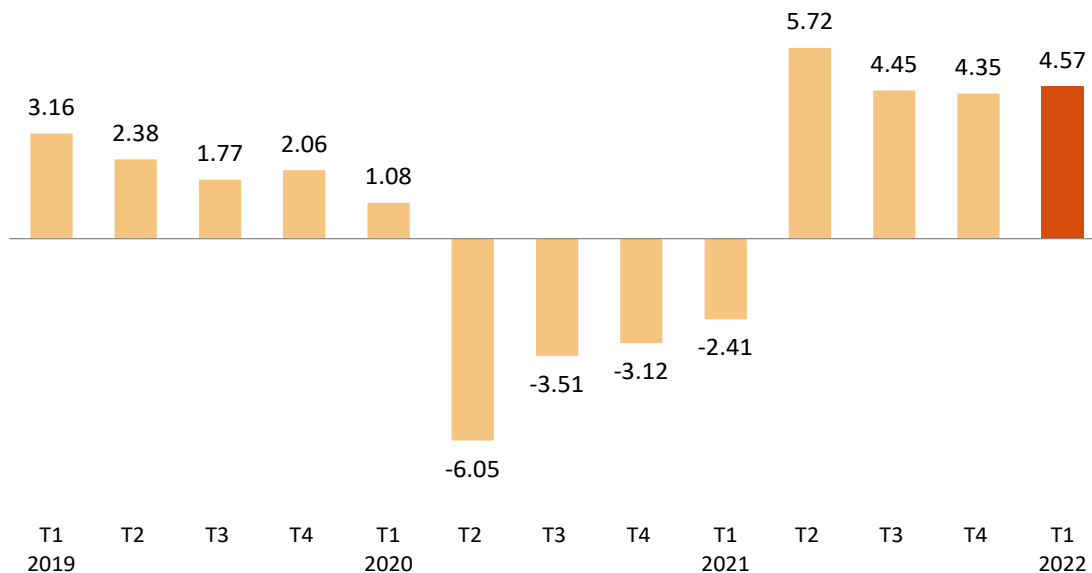
By sex, employment decreased this quarter by 39,600 for men and 60,700 for women. By nationality, employment fell by 123,800 persons among Spaniards¹, while it grew by 23,600 persons among foreign nationals.

By age, employment grew this quarter in the groups of 16 to 24 years old, 30 to 34, 45 to 49 and 55 and over. The largest increase was in the 20 to 24 year old age group (21,200 more). By contrast, employment decreased among those between 25 and 29 years old (2,500 fewer), between 35 and 39 (78,000 fewer), between 40 and 44 (60,700 fewer) and between 50 and 54 (27,700 fewer).

In the past 12 months, employment has increased by 878,000 persons (406,300 men and 471,700 women). The annual variation rate of employment was 4.57%, representing an increase of 22 hundredths compared to the previous quarter.

¹ Including dual nationality

Annual variation rate of employment. Percentage.



Employment increased this quarter in *Construction* (30,300 persons more), while it decreased in *Industry* (-68,000), *Services* (50,100 less) and *Agriculture* (-12,500).

In the last year, employment decreased in all four sectors: A total of 738,700 more persons were employed in *Services*, 55,000 in *Industry*, 54,500 in *Construction*, and 29,700 in *Agriculture*.

Full-time employment decreased by 171,500 persons this quarter, whilst part-time employment increased by 71,300. The percentage of persons employed part-time increased by 42 hundredths, up to 13.99%.

Over the last 12 months, full-time employment has increased by 764,800 persons and part-time employment by 113,100.

This quarter, the number of salaried employees decreased by 45,800. The number of wage-earners with a permanent contract has increased by 164,100 persons, while that of wage-earners with temporary contracts has decreased by 209,800 persons. The temporary employment rate decreased 1.17 points, to 24.21%.

Over the last 12 months, the number of salaried employees has increased by 824,200. Permanent employment also increased by 557,700 persons, while temporary employment did so by 266,500.

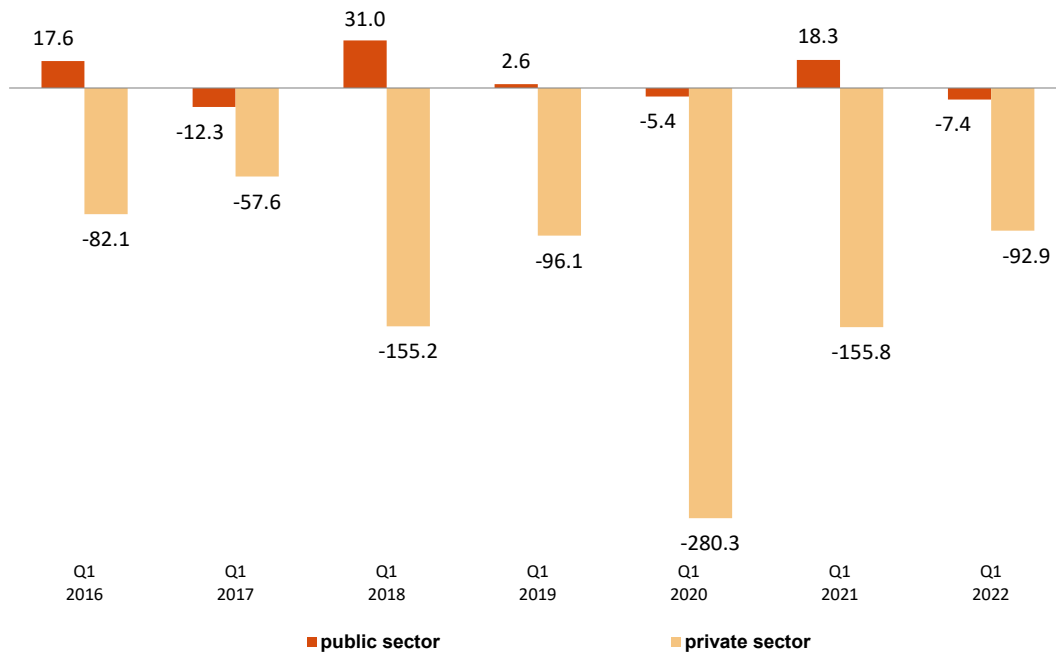
The number of self-employed persons decreased by 55,700 persons in quarterly variation. It increased by 62,400 in the last year.

This quarter, private employment² decreased by 92,900 persons, standing at 16,616,600. Public employment³ decreased by 7,400 to 3,468,200.

² Employment in the private sector includes: wage-earners from the private sector, employers, independent workers and businesspersons without wage earners, members of a cooperative, family assistance and other professional situations.

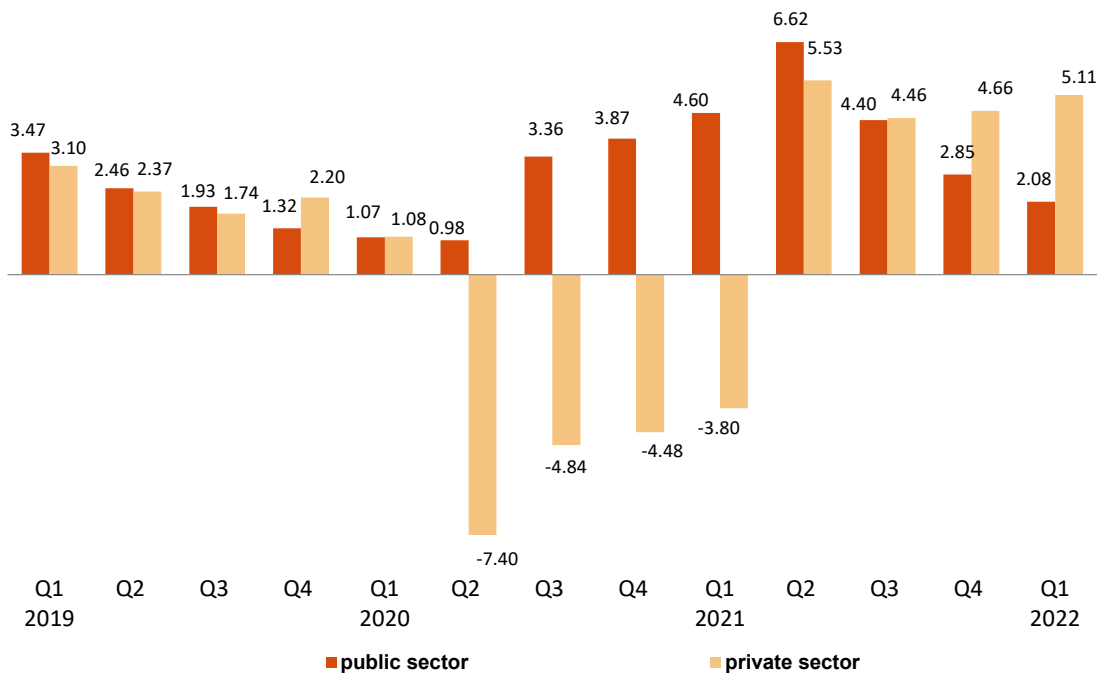
³ Public sector employment includes all wage earners in public enterprises and in the National and Regional Administrations, including both workers contributing to Social Security and those affiliated with the Special Civil Service System.

Quarterly variation of employment by nature of employer. Thousands.
(Q1 compared with Q4 of last year)



Employment in the private sector showed an annual variation of 5.11%, while public employment of 2.08%. In the past twelve months, employment has increased by 807,200 persons in the private sector and by 70,700 in the public sector.

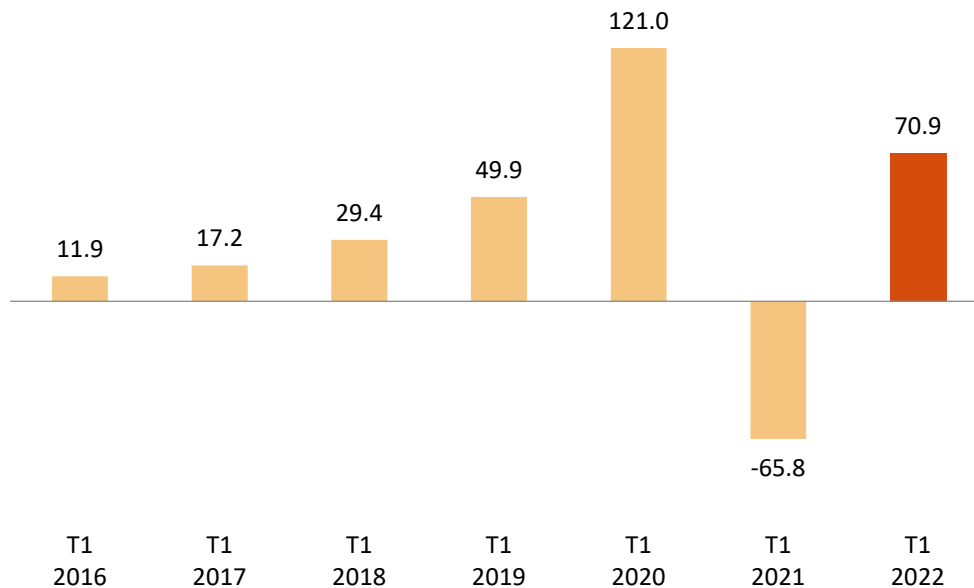
Annual variation rate of employment by nature of employer. Percentage.



Unemployment and unemployment rate

Unemployment increased by 70,900 persons this quarter. The total number of unemployed persons stood at 3,174,700. In relative terms, the quarterly variation was 2.28%.

Quarterly variation of employment. Thousands.
(Q1 compared with Q4 of last year)



The unemployment rate increased 32 hundredths and stood at 13.65%. In the last 12 months, this rate has decreased by 2.33 points.

By sex, the number of unemployed men increased by 29,000 this quarter, standing at 1,477,300. Among women, unemployment increased by 41,800, reaching 1,697,500.

The female unemployment rate increased by 41 hundredths and stood at 15.44%. The male unemployment rate increased by 25 hundredths and stood at 12.04%.

By age group, declines in unemployment were observed this quarter among people aged 55 and older (-2,200). On the other hand, the number of unemployed persons increased by 66,500 among those aged 25 to 54 and by 6,600 among those under 25.

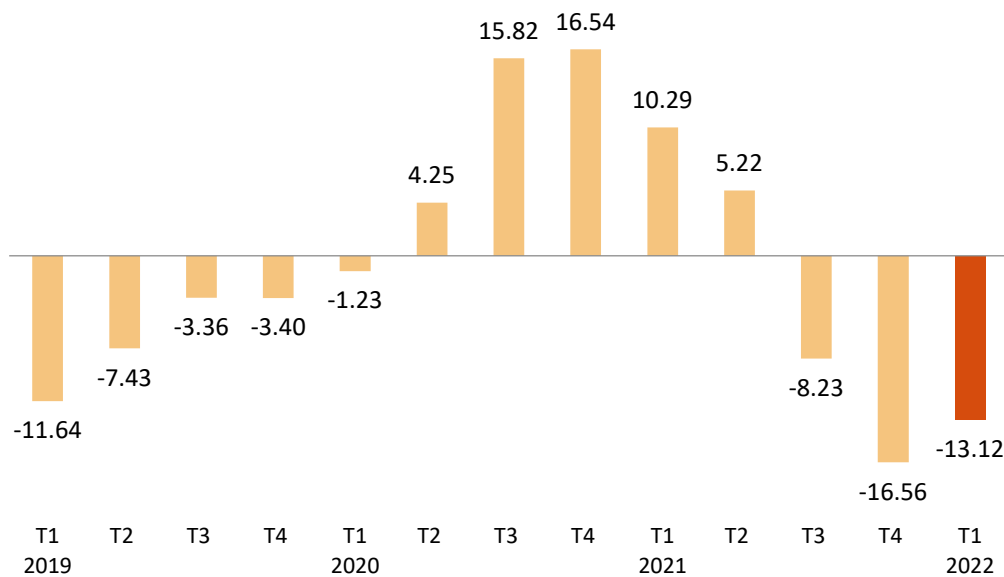
By nationality, unemployment rose this quarter by 47,300 among Spaniards¹ and it increased by 23,600 among foreigners. The unemployment rate of the Spanish population¹ was 12.45%, while that of the foreign population was 21.33%.

This quarter, unemployment increased in *Services* (96,300 more unemployed), *Agriculture* (15,700) and *Construction* (1,700). On the other hand, it decreased in *Agriculture* (6,300 less).

Unemployment decreased by 40,600 persons among those who lost their job over a year ago and by 4,100 among those who are seeking their first job.

The evolution of unemployment in the annual variation was -13.12%. The total number of unemployed persons has decreased by 479,200 persons in one year, with a decrease of 223,000 for men and 256,300 for women.

Annual variation rate of unemployment. Percentage.



By age, in the last 12 months unemployment fell in the group of 25 to 54 years (397,700 less) and in the group of 20 to 25 (-102,300). On the other hand, it rose in the age groups of 16 to 19 years old (10,500 more) and in the group of 55 and older (10,300).

In the last year, employment has fallen in all sectors. There were 246,700 fewer persons unemployed in *Services*, 38,000 in *Construction*, 38,400 in *Industry* and 32,900 in *Agriculture*. On the other hand, the number of unemployed persons who lost their jobs over a year ago has decreased by 115,600 and that of unemployed persons looking for their first job has fallen by 6,900.

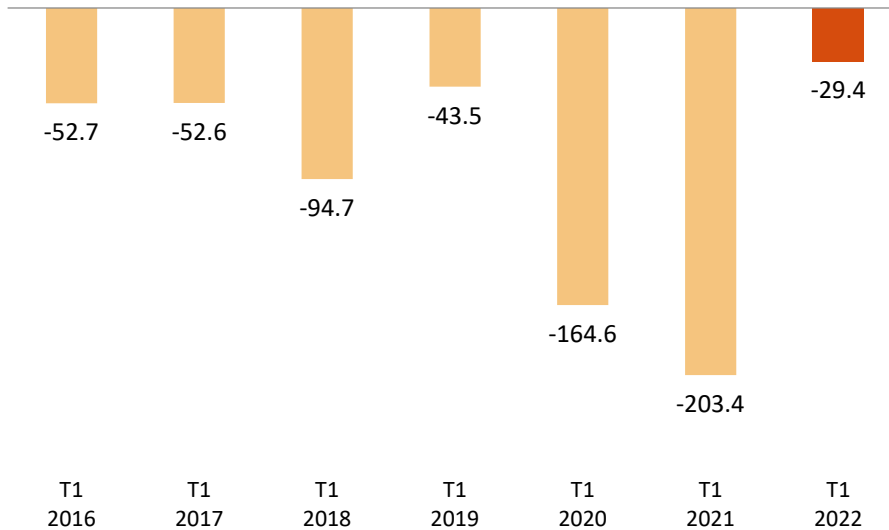
Economically active population and activity rate

The economically active population experienced a decrease of 29,400 persons in the second quarter of 2017, standing at 23,259,400. The number of economically active women decreased by 18,800, and that of men by 10,500.

By nationality, the number of economically active persons decreased this quarter by 76,500 among Spaniards and while it rose by 47,100 among foreign nationals.

The economic activity rate decreased 15 hundredths, reaching 58.50%. The economic activity rate for males fell 12 hundredths, standing at 63.53%, and that of females fell 19 hundredths, to 53.75%.

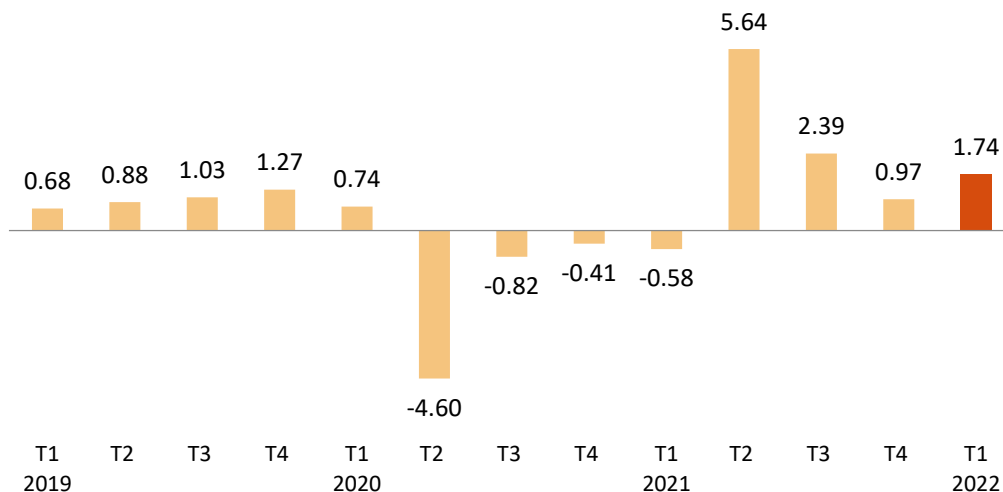
Quarterly variation of activity. Thousands.
(Q1 compared with Q4 of last year)



The activity rate of Spaniards¹ decreased 24 hundredths as compared with the previous quarter, standing at 57.06%. Foreign national activity increased by 46 hundredths, up to 69.76%. The difference of almost 13 points between both rates is mainly explained by the different age structures for both populations.

In annual terms, the economically active population has increased by 398,700 persons. The annual variation rate of economically active persons was 1.74%.

Annual variation rate of activity. Percentage.



Households

The number of households increased by 49,500 this quarter, standing at 19,039,500. Of these, 5,204,300 were single-person households.

Households in which all economically active members were unemployed increased by 29,000 this quarter, up to a total of 1,052,900. Of these, 298,700 were single-person households.

On the other hand, the number of households in which all of the economically active members were employed decreased by 22,300, standing at 11,049,700. Of these, 2,239,100 were single-person households.

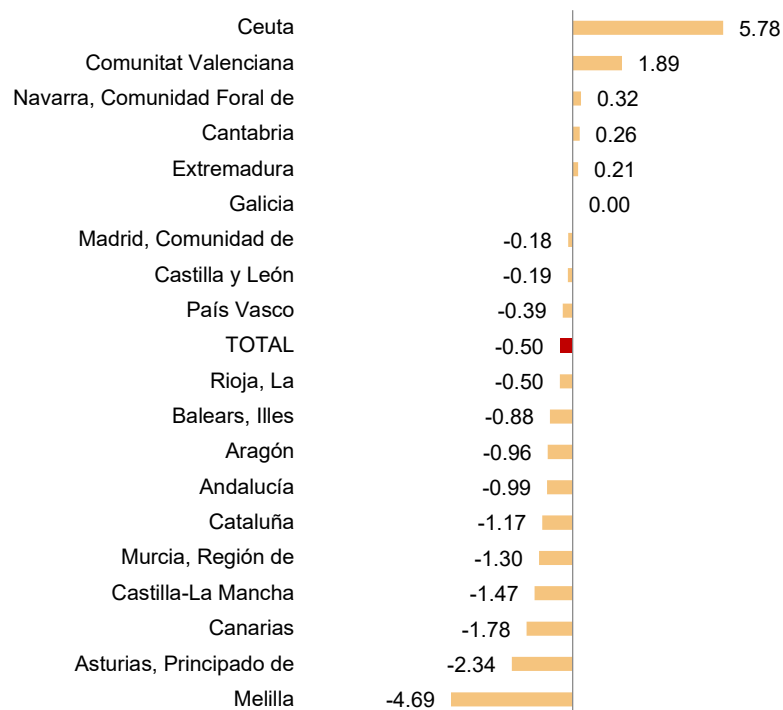
In annual comparison, the number of households with at least one economically active member in which those members were unemployed has decreased by 173,300, while those where all active members were employed has increased by 630,800.

Results by Autonomous Communities⁴

The largest increase in employment this quarter occurred in Comunitat Valenciana (39,900 more). On the other hand, the largest decreases were recorded in Cataluña (-40,900 persons), Andalucía (-32,000) and Canarias (-16,700).

In relative terms, the Autonomous Communities with the highest quarterly increase in employment were Comunitat Valenciana (1.89%), Comunidad Foral de Navarra (0.32%) and Cantabria (0.26%).

Quarterly variation rate of employment by autonomous community. Percentage.

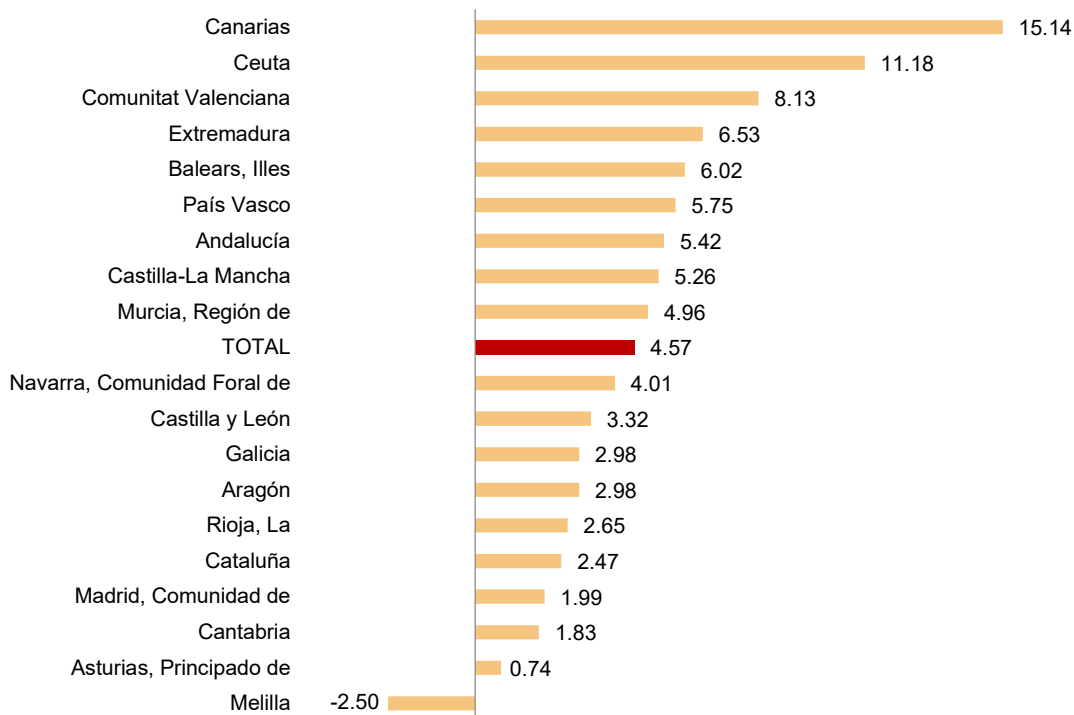


⁴ As with the rest of the EAPS data, employment results in this section are presented according to the Autonomous Community where the persons interviewed in the survey reside, and not according to where their workplace is.

In the last year, employment increased in all communities. The greatest increases took place in Andalucía (165,600 more), Comunitat Valenciana (162,000) and Canarias (121,200). In turn, the smallest increases occurred in Principado de Asturias (2,800), La Rioja (3,600) and Cantabria (4,400).

In relative terms, the Autonomous Communities with the greatest annual increases in employment were Canarias (15.14%), Comunitat Valenciana (8.13%) and Extremadura (6.53%). In the meantime, Principado de Asturias (0.74%), Cantabria (1.83%) and Comunidad de Madrid (1.99%) presented the lowest variations.

Annual variation rate of employment by autonomous community. Percentage.



The largest quarterly unemployment declines took place in Andalucía (-45,900) and Comunitat Valenciana (-37,900). On the other hand, the greatest increases were registered in Comunidad de Madrid (68,500 more unemployed persons), Illes Balears (23,100) and Canarias (15,500).

In annual terms, the greatest decreases in the number of unemployed persons occurred in Andalucía (-112,100), Cataluña (-105,500) and Comunitat Valenciana (-76,400).

País Vasco (8.69%), Aragón (10.14%) and Cataluña (10.23%) recorded the lowest unemployment rates this quarter. At the other end of the scale, Canarias (20.30%), Andalucía (19.43%) and Extremadura (18.98%) showed the highest rates.

The largest increases in the economically active population this quarter were registered in Comunidad de Madrid (62,700 more economically active people), Illes Balears (18,300) and Castilla y León (7,300). The greatest decreases were observed in Andalucía (77,900), and Cataluña (-42,100).

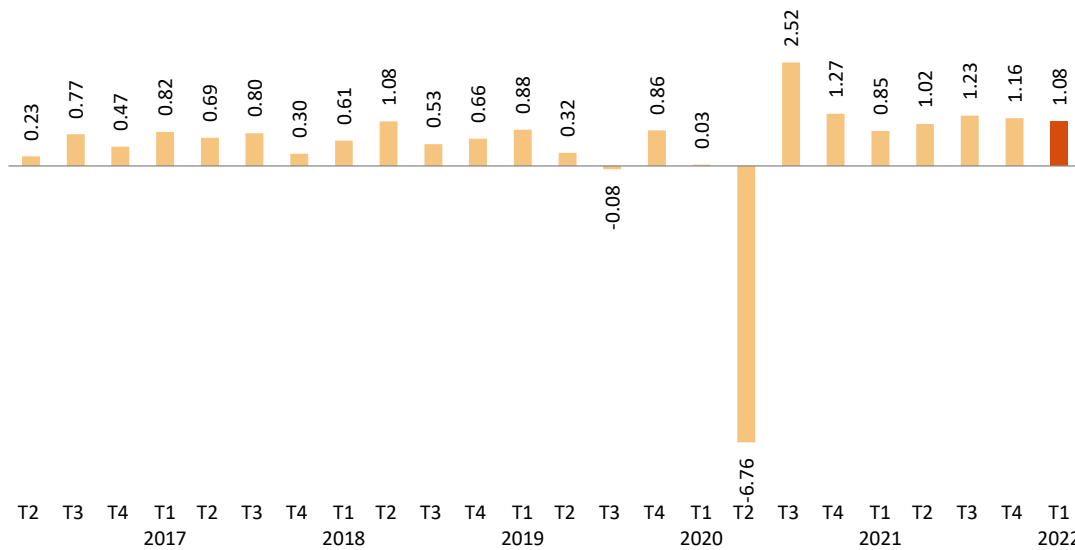
In the last 12 months, Comunitat Valenciana (85,600) and Canarias (83,100) showed the largest increases in the number of the active population. However, the greatest decreases were observed in Cataluña (22,100 fewer) and Principado de Asturias (-7,500).

This quarter, the activity rates fluctuated between 63.90% for Comunidad de Madrid and 49.86% for Principado de Asturias.

Seasonally adjusted series

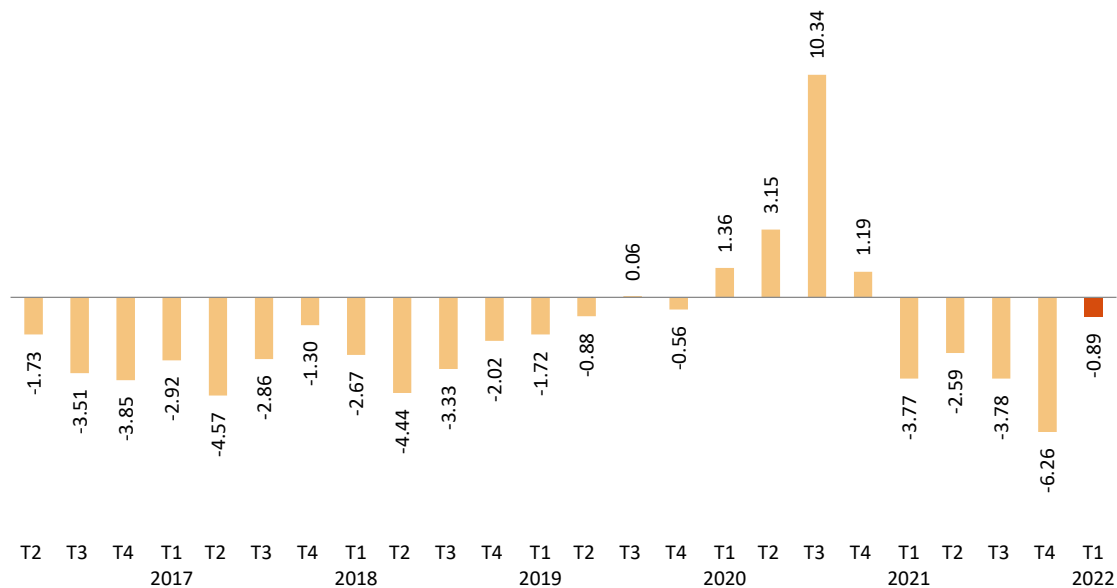
In the first quarter of 2022, the quarterly variation rate of employment adjusted for seasonal effects was 1.08%.

Quarterly variation rate of seasonally adjusted employment. Percentage.



As regards seasonally-adjusted unemployment results, there was a decrease of 0.89%.

Quarterly variation rate of seasonally adjusted unemployment. Percentage.



As explained in the methodology used for seasonal adjustment, the seasonal adjustment model is maintained for a year, with the first quarters corresponding to the time of the model's re-identification, but the coefficients are recalculated quarterly, so that each quarter the previous results are reviewed (either by re-identification or by revision of coefficients) and therefore the latest series available must always be consulted.

The series of the quarterly variation rates of the seasonally adjusted results of employment and unemployment since 2005 and the description of the method used can be found in:

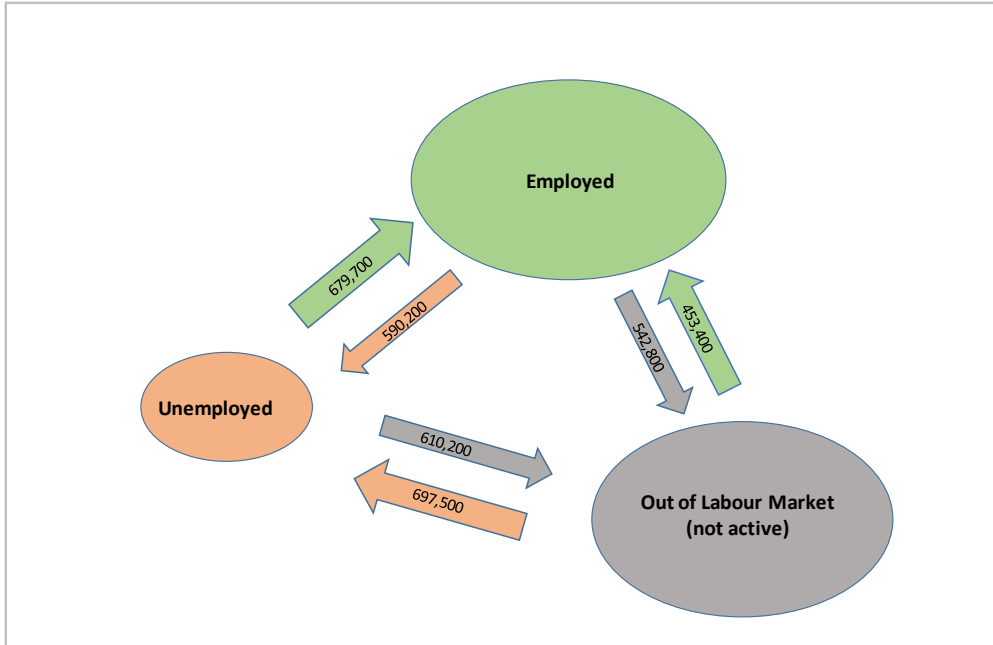
http://www.ine.es/daco/daco42/daco4221/epa_desestacional.xlsx

Flows in absolute values with respect to the previous quarter⁵

This quarter has seen a decrease in flows towards employment, from both those who were unemployed and those who were economically inactive in the previous quarter. An increase in the incorporation of economically inactive people can also be observed in the quarter prior to unemployment.

⁵ This section compiles the results of the Economically Active Population Flow Statistics. Due to the methodology used in preparation, the results might not match the net balances of quarterly EAPS. The differences are caused by the "no data recorded" groups (persons turning 16 years old in the change between one quarter and the next and those who did not live in Spain in the previous quarter).

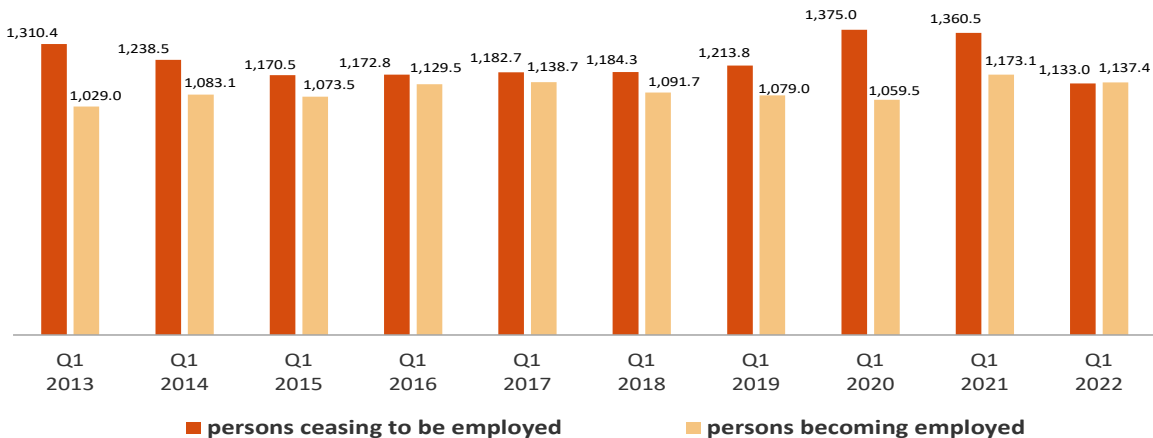
Flows of persons by labour status from Q4-2021 to Q1-2022



The total inflow to employment in the first quarter of 2022 was 1,137,400 people, a figure 35,700 lower than that registered in the same quarter of the previous year.

On the other hand, the outflow from employment was 1,133,000 people, which is 227,500 less than in the same quarter of 2021.

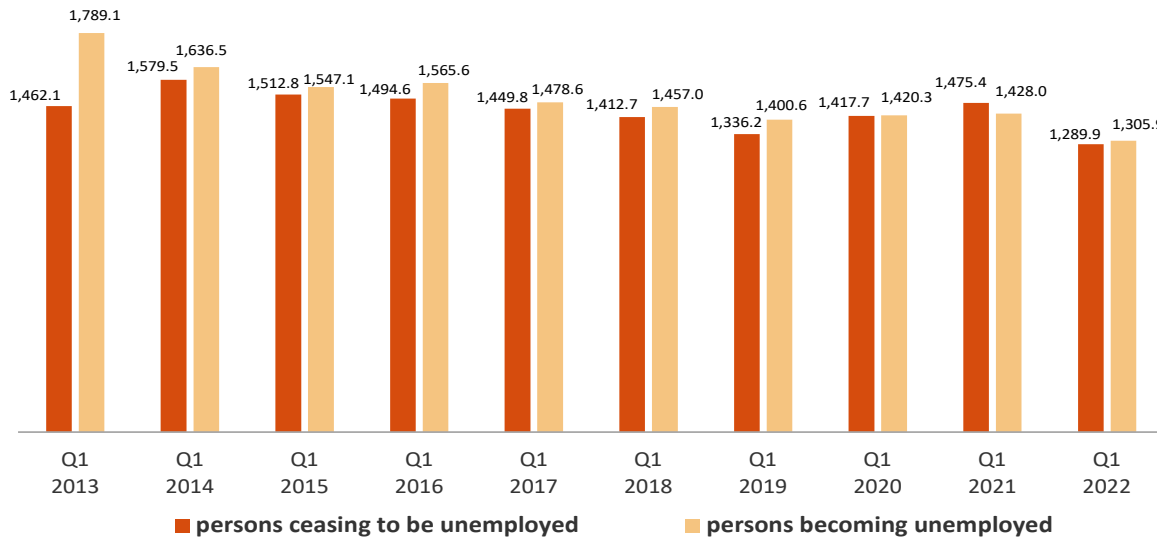
Flows of persons becoming and ceasing to be employed each quarter. Thousands.



The number of persons who were unemployed three months ago but are not currently unemployed stood at 1,289,900, which is 185,500 fewer persons than in the same period in 2021.

However, the total inflow to unemployment reached 1,305,900 people, which is 122,100 fewer persons than in the same quarter of 2021.

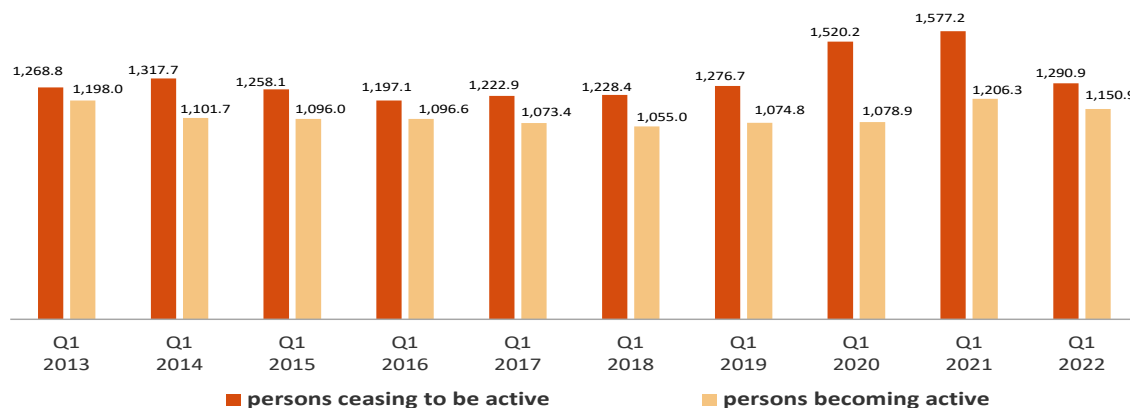
Flows of persons becoming and ceasing to be unemployed each quarter. Thousands.



The inflow to activity in this first quarter was 1,150,900, a figure 55,400 lower than that of the same period in 2021.

Meanwhile, a total of 1,290,900 people have left the activity this quarter, compared to 1,577,200 who did so during the same quarter in the previous year (that is, 286,300 less).

Flows of persons becoming and ceasing to be active each quarter. Thousands.



The outflow from employment to inactivity of people aged 60 and over was 114,300 this quarter. This figure is 23,700 lower than that observed in the same period for 2021.

The number of people under 25 who have entered employment directly from inactivity this quarter stood at 143,500, a figure 29,500 higher than that observed in the same quarter of 2021.

The flow data on which these comments are based can be found in the annex to this press release <http://www.ine.es/daco/daco42/daco4211/epaflu0122.xlsx>

EAPS results by province

The provincial results summary of the EAPS may be accessed via the following link:

<http://www.ine.es/daco/daco42/daco4211/epapro0122.pdf>

All the provincial information can also be accessed from the INEbase database:

<http://www.ine.es/dynt3/inebase/index.html?padre=996>

Data Review and Update

The data published today are final. All results are available on INEBase.

Methodological note

The Labour Force Survey (EAPS) has been carried out since 1964. The methodology currently used was put in place in 2021, and adapts the previous methodology (begun in 2005) to the new regulations of the European Labour Force Survey.

It is a continuous, quarterly research addressed to families, whose main purpose is to obtain data on the labour force and its various categories (employed, unemployed), as well as on the population outside the labour market (inactive).

As of the third quarter of 2009, the survey includes an additional sample in Galicia that is collected by the Galician Statistics Institute (IGE) using the same fieldwork system and methodology as the INE.

Type of survey: quarterly continuous survey.

Population scope: population residing in family dwellings.

Geographical scope: the entire national territory.

Reference period of the results: the quarter.

Reference period of the information: the week before the interview.

Sample size: 3,822 census tracts, around 65,000 dwellings and 160,000 people. Of the 3,822 tracts, 234 correspond to the additional sample of Galicia.

Gradually the number of sections will increase to a total of 5,298 in 2024, of which 288 correspond to the additional sample from Galicia. The number of homes selected per section will go from an average of 20 to 14.

Type of sampling – Two-stage sampling with stratification in the first stage units. The first stage units are the census tracts and the second stage units are the inhabited family dwellings.

Collection method: personal, telephone, and web interview.

For more information, the methodology and technical details of the survey design and data quality assessment can be accessed at:

https://www.ine.es/dyngs/INEbase/es/operacion.htm?c=Estadistica_C&cid=1254736176918&menu=metodologia&idp=1254735976595

The standardized methodological report is at:

<https://www.ine.es/dynt3/metadatos/es/RespuestaDatos.html?oe=30308>

INE statistics are produced in accordance with the Code of Good Practice for European Statistics, which is the basis for the institution's quality policy and strategy. Para más información, véase la sección de [Calidad en el INE y Código de Buenas Prácticas](#) en la página web del INE

The Statistics on Economically Active Population Flows (EAPFS) collect information regarding the follow-up of the population, or specific groups thereof, between one quarter and the previous one in absolute values, regarding its relation with labour market. This information links the interviewee's situations in two moments of time on the basis of the EAPS in order to study its evolution.

Given that in the EAPS sample one sixth is renewed each quarter and the remaining 5/6 parts are kept fixed between two consecutive quarters, the common part of the sample between the two conducts of the survey is used to obtain flow statistics from the questions relating to the situation in which the interviewee was in the current and previous quarters.

Type of survey: quarterly exploitation of the common EAPS sample between consecutive quarters that provides estimates in absolute values of the relation with the activity in the current period compared with that of the previous quarter.

Population scope: population residing in family dwellings.

Geographical scope: the entire national territory.

Reference period of the results: the quarter.

Reference period of the information: the week before the interview.

Sample size: 3,822 census tracts. The common EAPS sample between consecutive quarters is approximately 100,000 people aged 16 and older. Gradually the number of sections will increase to a total of 5,298 in 2024, of which 288 correspond to the additional sample from Galicia. The number of homes selected per section will go from an average of 20 to 14.

Type of sampling – Two-stage sampling with stratification in the first stage units. The first stage units are the census tracts and the second stage units are the inhabited family dwellings.

Collection method: personal and telephone interview.

For more information the methodology can be accessed at:

https://www.ine.es/inebaseDYN/flujos30310/docs/metoflujos_valores_absolutos.pdf

The standardized methodological report is at:

<https://www.ine.es/dynt3/metadatos/es/RespuestaDatos.html?oe=30310>

For further information see **INEbase:** www.ine.es/en/ Twitter: [@es_ine](https://twitter.com/es_ine)

All press releases at: www.ine.es/en/prensa/prensa_en.htm

Press Office: Telephone numbers: (+34) 91 583 93 63 /94 08 – gprensa@ine.es

Information Area: Telephone number: (+34) 91 583 91 00 – www.ine.es/infoine/?L=1

Economically Active Population Survey First Quarter 2022

National results

(Continues)

	Current quarter	Variation on previous quarter		Variation on same quarter, previous year	
		Difference	Percentage	Difference	Percentage
1. Population aged 16 years and over by sex and labour status					
BOTH SEXES					
Population aged 16 years and over	39,761.6	54.7	0.14	134.2	0.34
Active population	23,259.4	-29.4	-0.13	398.7	1.74
- Employed persons	20,084.7	-100.2	-0.50	878.0	4.57
- Unemployed persons	3,174.7	70.9	2.28	-479.2	-13.12
Inactive population	16,502.2	84.0	0.51	-264.5	-1.58
Activity rate	58.50	-0.15	-	0.81	-
Unemployment rate	13.65	0.32	-	-2.33	-
Population aged 16 to 64 years	30,556.6	10.4	0.03	-26.0	-0.09
Activity rate (16-64)	75.05	-0.15	-	1.22	-
Unemployment rate (16-64)	13.75	0.31	-	-2.38	-
Employment rate (16-64)	64.74	-0.36	-	2.81	-
MALES					
Population aged 16 years and over	19,311.9	19.2	0.10	48.7	0.25
Active population	12,268.6	-10.5	-0.09	183.3	1.52
- Employed persons	10,791.3	-39.6	-0.37	406.3	3.91
- Unemployed persons	1,477.3	29.0	2.00	-223.0	-13.11
Inactive population	7,043.3	29.8	0.42	-134.6	-1.88
Activity rate	63.53	-0.12	-	0.79	-
Unemployment rate	12.04	0.25	-	-2.03	-
Population aged 16 to 64 years	15,256.6	-1.5	-0.01	-25.7	-0.17
Activity rate (16-64)	79.21	-0.07	-	1.16	-
Unemployment rate (16-64)	12.13	0.24	-	-2.08	-
Employment rate (16-64)	69.60	-0.25	-	2.64	-
FEMALES					
Population aged 16 years and over	20,449.8	35.4	0.17	85.5	0.42
Active population	10,990.9	-18.8	-0.17	215.4	2.00
- Employed persons	9,293.4	-60.7	-0.65	471.7	5.35
- Unemployed persons	1,697.5	41.8	2.53	-256.3	-13.12
Inactive population	9,458.9	54.3	0.58	-129.9	-1.35
Activity rate	53.75	-0.19	-	0.83	-
Unemployment rate	15.44	0.41	-	-2.69	-
Population aged 16 to 64 years	15,300.0	11.9	0.08	-0.3	0.00
Activity rate (16-64)	70.91	-0.22	-	1.29	-
Unemployment rate (16-64)	15.55	0.39	-	-2.73	-
Employment rate (16-64)	59.89	-0.47	-	2.99	-

2. Spanish population⁽¹⁾ aged 16 years and over by labour status

SPANISH POPULATION AGED 16 YEARS AND OVER	35,257.3	16.5	0.05	125.3	0.36
Active population	20,117.4	-76.5	-0.38	321.5	1.62
- Employed persons	17,612.8	-123.8	-0.70	668.0	3.94
- Unemployed persons	2,504.6	47.3	1.93	-346.5	-12.15
Inactive population	15,139.9	93.0	0.62	-196.2	-1.28
Activity rate	57.06	-0.24	-	0.71	-
Unemployment rate	12.45	0.28	-	-1.95	-

⁽¹⁾ including dual nationality

28 April 2022

National results

(Continuation)

	Current quarter	Variation on previous quarter		Variation on same quarter, previous year		
		Difference	Percentage	Difference	Percentage	
3. Foreign population aged 16 years and over by labour status						
FOREIGN POPULATION AGED 16 YEARS AND OVER	4,504.3	38.2	0.86	8.9	0.20	
Active population	3,142.0	47.1	1.52	77.2	2.52	
- Employed persons	2,471.9	23.6	0.96	209.9	9.28	
- Unemployed persons	670.1	23.6	3.64	-132.7	-16.53	
Inactive population	1,362.3	-8.9	-0.65	-68.3	-4.78	
Activity rate	69.76	0.46	-	1.58	-	
Unemployment rate	21.33	0.44	-	-4.87	-	
4. Employed persons by sex, age group and economic sector						
BOTH SEXES	20,084.7	-100.2	-0.50	878.0	4.57	
16 to 19 years	142.0	19.1	15.55	61.2	75.87	
20 to 24 years	919.9	21.2	2.36	158.0	20.74	
25 to 29 years	1,711.2	-2.5	-0.14	124.7	7.86	
30 to 34 years	2,051.5	18.9	0.93	69.0	3.48	
35 to 39 years	2,373.5	-78.0	-3.18	-3.4	-0.14	
40 to 44 years	2,984.5	-60.7	-1.99	-0.3	-0.01	
45 to 49 years	3,127.5	7.1	0.23	146.6	4.92	
50 to 54 years	2,745.7	-27.7	-1.00	92.4	3.48	
55 and over	4,029.0	2.4	0.06	229.6	6.04	
MALES	10,791.3	-39.6	-0.37	406.3	3.91	
16 to 19 years	81.4	14.0	20.81	30.9	61.30	
20 to 24 years	492.2	10.4	2.15	69.8	16.53	
25 to 29 years	879.8	2.3	0.27	57.2	6.95	
30 to 34 years	1,077.0	28.9	2.75	39.1	3.77	
35 to 39 years	1,256.8	-33.9	-2.63	-24.7	-1.93	
40 to 44 years	1,601.2	-17.7	-1.09	-7.6	-0.48	
45 to 49 years	1,707.3	-6.1	-0.36	77.4	4.75	
50 to 54 years	1,493.0	-15.7	-1.04	35.9	2.46	
55 and over	2,202.7	-21.7	-0.98	128.4	6.19	
FEMALES	9,293.4	-60.7	-0.65	471.7	5.35	
16 to 19 years	60.6	5.1	9.17	30.3	100.13	
20 to 24 years	427.8	10.9	2.61	88.2	25.98	
25 to 29 years	831.3	-4.8	-0.58	67.6	8.84	
30 to 34 years	974.5	-10.0	-1.02	29.9	3.17	
35 to 39 years	1,116.8	-44.1	-3.80	21.4	1.95	
40 to 44 years	1,383.3	-43.0	-3.02	7.3	0.53	
45 to 49 years	1,420.2	13.2	0.94	69.2	5.13	
50 to 54 years	1,252.7	-12.0	-0.95	56.5	4.72	
55 and over	1,826.3	24.1	1.34	101.2	5.87	
TOTAL EMPLOYED PERSONS	20,084.7	-100.2	-0.50	878.0	4.57	
Agriculture	827.7	-12.5	-1.48	29.7	3.73	
Industry	2,697.1	-68.0	-2.46	55.0	2.08	
Construction	1,316.3	30.3	2.36	54.5	4.32	
Services	15,243.6	-50.1	-0.33	738.7	5.09	

National results

(Continuation)

	Current quarter	Variation on previous quarter		Variation on same quarter, previous year	
		Difference	Percentage	Difference	Percentage

5. Employed persons by professional status, type of contract, public / private sectors and working hours

TOTAL EMPLOYED PERSONS	20,084.7	-100.2	-0.50	878.0	4.57
BY PROFESSIONAL STATUS					
Self-employed persons	3,142.3	-55.7	-1.74	62.4	2.03
- Employers	970.0	-14.5	-1.47	57.6	6.32
- Independent workers	2,084.2	-25.6	-1.21	21.4	1.04
- Cooperative members	27.3	0.0	0.04	4.7	21.01
- Family workers	60.8	-15.6	-20.45	-21.3	-25.98
Employees	16,928.5	-45.8	-0.27	824.2	5.12
- With a permanent job	12,829.8	164.1	1.30	557.7	4.54
- With a temporary job	4,098.6	-209.8	-4.87	266.5	6.95
Others	13.9	1.2	9.86	-8.7	-38.40
BY PUBLIC / PRIVATE SECTORS					
Public sector employed persons	3,468.2	-7.4	-0.21	70.7	2.08
Private sector employed persons	16,616.6	-92.9	-0.56	807.2	5.11
BY WORKING HOURS					
Full-time employed persons	17,275.5	-171.5	-0.98	764.8	4.63
Males	10,094.1	-69.5	-0.68	400.9	4.14
Females	7,181.4	-102.1	-1.40	363.9	5.34
Part-time employed persons	2,809.3	71.3	2.60	113.1	4.20
Males	697.3	29.9	4.48	5.3	0.77
Females	2,112.0	41.4	2.00	107.8	5.38

(*) Private employment includes all persons in employment other than public employees. Namely: private employees, employers, independent workers, cooperative members, family workers and other professional status.

6. Unemployed persons by sex, age group, and economic sector

BOTH SEXES	3,174.7	70.9	2.28	-479.2	-13.12
16 to 19 years	123.1	4.0	3.32	10.5	9.35
20 to 24 years	336.0	2.6	0.77	-102.3	-23.35
25 to 54 years	2,152.7	66.5	3.19	-397.7	-15.59
55 and over	562.9	-2.2	-0.38	10.3	1.87
MALES	1,477.3	29.0	2.00	-223.0	-13.11
16 to 19 years	64.3	-1.8	-2.77	0.1	0.18
20 to 24 years	184.8	8.4	4.79	-43.0	-18.89
25 to 54 years	958.9	9.4	0.99	-176.5	-15.54
55 and over	269.3	13.0	5.08	-3.6	-1.31
FEMALES	1,697.5	41.8	2.53	-256.3	-13.12
16 to 19 years	58.8	5.8	10.93	10.4	21.51
20 to 24 years	151.2	-5.9	-3.73	-59.3	-28.17
25 to 54 years	1,193.8	57.1	5.02	-221.2	-15.63
55 and over	293.6	-15.2	-4.91	13.9	4.96
TOTAL UNEMPLOYED PERSONS	3,174.7	70.9	2.28	-479.2	-13.12
Agriculture	154.8	-6.3	-3.94	-32.9	-17.51
Industry	156.3	15.7	11.17	-38.4	-19.74
Construction	115.7	1.7	1.49	-38.8	-25.10
Services	1,104.0	96.3	9.56	-246.7	-18.27
Lost their job more than 1 year ago	1,324.3	-40.6	-2.97	-115.6	-8.03
First job seekers	319.6	4.1	1.31	-6.9	-2.11

National results

(Conclusion)

	Current quarter	Variation on previous quarter		Variation on same quarter, previous year	
		Difference	Percentage	Difference	Percentage

7. Unemployment rate by relationship with the reference person

	Current quarter	Difference	Percentage	Difference	Percentage
TOTAL	13.65	0.32	-	-2.33	-
Reference person	11.55	0.39	-	-1.33	-
Spouse or partner	11.00	0.23	-	-1.53	-
Child	23.95	-0.15	-	-5.99	-
Other relatives	20.79	0.58	-	-3.99	-
Unrelated persons	14.06	2.73	-	-7.00	-

8. Household data

	Current quarter	Difference	Percentage	Difference	Percentage
TOTAL HOUSEHOLDS	19,039.5	49.5	0.26	175.2	0.93
Households with at least one active member	13,750.3	23.4	0.17	235.5	1.74
- All members employed	11,049.7	-22.3	-0.20	630.8	6.05
- All members unemployed	1,052.9	29.0	2.83	-173.3	-14.14
Households without any active population	5,289.2	26.1	0.50	-60.3	-1.13

Mobility according to activity in current and previous quarter

Classification in previous quarter	Classification in current quarter			
	Total	Employed	Unemployed persons	Inactive
BOTH SEXES				
Total	39,761.7	20,084.7	3,174.7	16,502.2
Employed persons	20,080.3	18,947.4	590.2	542.8
Unemployed persons	3,158.7	679.7	1,868.8	610.2
Inactive	16,362.2	453.4	697.5	15,211.3
Not classifiable	160.4	4.2	18.3	137.9
MALES				
Total	19,311.0	10,819.2	1,472.8	7,019.0
Employed persons	10,842.4	10,282.1	316.9	243.5
Unemployed persons	1,458.9	354.3	858.7	245.9
Inactive	6,933.7	179.4	288.2	6,466.1
Not classifiable	76.0	3.4	9.0	63.6
FEMALES				
Total	20,450.6	9,265.5	1,701.9	9,483.2
Employed persons	9,237.9	8,665.3	273.3	299.3
Unemployed persons	1,699.8	325.4	1,010.1	364.3
Inactive	9,428.5	274.0	409.3	8,745.2
Not classifiable	84.4	0.8	9.2	74.3

Weighting factors of current quarter (backward analysis)

Results by autonomous community and autonomous city

(Continues)

	Current quarter	Variation on previous quarter		Variation on same quarter, previous year	
		Difference	Percentage	Difference	Percentage
1. Population aged 16 years and over					
TOTAL	39,761.6	54.7	0.14	134.2	0.34
Andalucía	7,082.4	7.4	0.10	49.4	0.70
Aragón	1,095.9	-4.4	-0.40	-12.1	-1.10
Asturias, Principado de	882.1	1.2	0.13	-2.2	-0.24
Balears, Illes	1,029.1	1.6	0.16	0.7	0.06
Canarias	1,946.1	7.5	0.39	16.8	0.87
Cantabria	499.8	1.6	0.33	1.4	0.28
Castilla y León	2,029.6	-0.3	-0.02	-7.0	-0.34
Castilla-La Mancha	1,700.6	2.6	0.16	1.6	0.09
Cataluña	6,357.9	3.2	0.05	10.1	0.16
Comunitat Valenciana	4,255.2	7.3	0.17	22.8	0.54
Extremadura	892.6	1.0	0.12	-0.6	-0.07
Galicia	2,340.2	-0.6	-0.03	-1.1	-0.05
Madrid, Comunidad de	5,627.3	24.7	0.44	39.6	0.71
Murcia, Región de	1,248.2	0.6	0.05	12.3	1.00
Navarra, Comunidad Foral de	544.3	1.2	0.22	2.6	0.48
País Vasco	1,839.5	0.8	0.05	2.1	0.12
Rioja, La	263.6	-0.2	-0.08	-1.3	-0.50
Ceuta	65.6	0.6	0.86	0.5	0.80
Melilla	61.8	-1.2	-1.84	-1.3	-2.06

2. Active population

TOTAL	23,259.4	-29.4	-0.13	398.7	1.74
Andalucía	3,993.7	-77.9	-1.91	53.5	1.36
Aragón	649.2	1.8	0.28	4.7	0.73
Asturias, Principado de	439.8	-0.8	-0.17	-7.5	-1.69
Balears, Illes	649.3	18.3	2.91	30.5	4.92
Canarias	1,155.8	-1.3	-0.11	83.1	7.74
Cantabria	271.5	-2.3	-0.84	0.8	0.30
Castilla y León	1,109.8	7.3	0.66	16.5	1.51
Castilla-La Mancha	999.5	-3.7	-0.37	13.7	1.39
Cataluña	3,851.5	-42.1	-1.08	-22.1	-0.57
Comunitat Valenciana	2,473.6	2.0	0.08	85.6	3.58
Extremadura	490.5	1.2	0.25	10.8	2.26
Galicia	1,232.4	6.0	0.49	14.3	1.18
Madrid, Comunidad de	3,595.8	62.7	1.77	58.1	1.64
Murcia, Región de	743.2	-5.3	-0.71	9.9	1.35
Navarra, Comunidad Foral de	322.4	2.8	0.88	8.9	2.83
País Vasco	1,044.0	-1.1	-0.11	31.4	3.10
Rioja, La	158.1	0.5	0.34	2.9	1.85
Ceuta	40.1	3.4	9.30	4.4	12.27
Melilla	39.2	-1.0	-2.39	-0.7	-1.74

* Data below 5000 are subject to strong variations, due to sampling error

Results by autonomous community and autonomous city

(Conclusion)

	Current quarter	Variation on previous quarter		Variation on same quarter, previous year	
		Difference	Percentage	Difference	Percentage
3. Employed persons					
TOTAL	20,084.7	-100.2	-0.50	878.0	4.57
Andalucía	3,217.8	-32.0	-0.99	165.6	5.42
Aragón	583.4	-5.6	-0.96	16.9	2.98
Asturias, Principado de	387.2	-9.3	-2.34	2.8	0.74
Balears, Illes	532.2	-4.7	-0.88	30.2	6.02
Canarias	921.2	-16.7	-1.78	121.2	15.14
Cantabria	242.9	0.6	0.26	4.4	1.83
Castilla y León	986.8	-1.8	-0.19	31.7	3.32
Castilla-La Mancha	856.9	-12.8	-1.47	42.8	5.26
Cataluña	3,457.3	-40.9	-1.17	83.4	2.47
Comunitat Valenciana	2,155.8	39.9	1.89	162.0	8.13
Extremadura	397.5	0.8	0.21	24.4	6.53
Galicia	1,091.4	0.1	0.00	31.6	2.98
Madrid, Comunidad de	3,169.8	-5.8	-0.18	61.9	1.99
Murcia, Región de	643.3	-8.5	-1.30	30.4	4.96
Navarra, Comunidad Foral de	288.8	0.9	0.32	11.1	4.01
País Vasco	953.2	-3.8	-0.39	51.9	5.75
Rioja, La	140.4	-0.7	-0.50	3.6	2.65
Ceuta	28.4	1.6	5.78	2.9	11.18
Melilla	30.5	-1.5	-4.69	-0.8	-2.50

4. Unemployed persons

TOTAL	3,174.7	70.9	2.28	-479.2	-13.12
Andalucía	775.9	-45.9	-5.58	-112.1	-12.62
Aragón	65.8	7.4	12.72	-12.2	-15.61
Asturias, Principado de	52.6	8.5	19.29	-10.4	-16.48
Balears, Illes	117.1	23.1	24.54	0.3	0.22
Canarias	234.6	15.5	7.06	-38.1	-13.97
Cantabria	28.6	-2.9	-9.30	-3.6	-11.09
Castilla y León	123.0	9.1	8.03	-15.2	-10.99
Castilla-La Mancha	142.6	9.0	6.75	-29.1	-16.95
Cataluña	394.2	-1.2	-0.31	-105.5	-21.12
Comunitat Valenciana	317.8	-37.9	-10.66	-76.4	-19.39
Extremadura	93.1	0.4	0.42	-13.5	-12.68
Galicia	141.0	6.0	4.43	-17.3	-10.91
Madrid, Comunidad de	426.0	68.5	19.17	-3.8	-0.87
Murcia, Región de	99.9	3.2	3.26	-20.5	-17.06
Navarra, Comunidad Foral de	33.6	1.9	5.97	-2.2	-6.25
País Vasco	90.8	2.6	2.99	-20.5	-18.42
Rioja, La	17.7	1.2	7.55	-0.7	-4.06
Ceuta	11.7	1.9	18.88	1.5	15.00
Melilla	8.7	0.5	6.69	0.1	1.00

* Data below 5,000 are subject to strong variations, due to sampling error

Results by autonomous community and autonomous city

(Absolute figures in thousands and rates in percentage)

5. Employed and unemployed persons by sex. Activity and unemployment rates

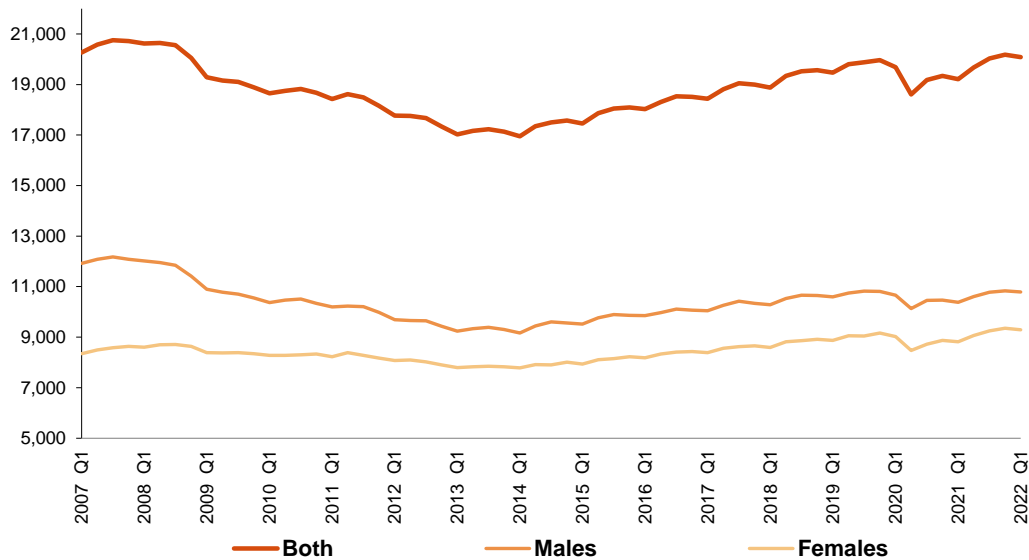
	Both sexes				Males				Females			
	Employed persons	Unemployed persons	Activity rate	Unem. rate	Employed persons	Unemployed persons	Activity rate	Unem. Rate	Employed persons	Unemployed persons	Activity rate	Unem. Rate
TOTAL	20,084.7	3,174.7	58.50	13.65	10,791.3	1,477.3	63.53	12.04	9,293.4	1,697.5	53.75	15.44
Andalucía	3,217.8	775.9	56.39	19.43	1,807.8	349.6	62.29	16.21	1,410.0	426.3	50.74	23.21
Aragón	583.4	65.8	59.24	10.14	314.2	29.4	64.06	8.57	269.1	36.4	54.62	11.90
Asturias, Principado de	387.2	52.6	49.86	11.97	208.6	22.3	55.29	9.65	178.6	30.3	44.98	14.52
Balears, Illes	532.2	117.1	63.09	18.03	290.4	56.9	68.05	16.38	241.8	60.2	58.22	19.93
Canarias	921.2	234.6	59.39	20.30	485.8	116.9	63.24	19.39	435.5	117.7	55.70	21.28
Cantabria	242.9	28.6	54.32	10.53	132.3	12.4	59.91	8.58	110.6	16.2	49.08	12.77
Castilla y León	986.8	123.0	54.68	11.08	536.3	55.9	59.28	9.45	450.5	67.1	50.22	12.96
Castilla-La Mancha	856.9	142.6	58.78	14.27	498.7	61.5	65.90	10.98	358.2	81.1	51.65	18.45
Cataluña	3,457.3	394.2	60.58	10.23	1,799.1	192.5	64.60	9.66	1,658.2	201.7	56.79	10.85
Comunitat Valenciana	2,155.8	317.8	58.13	12.85	1,162.2	151.6	63.43	11.54	993.6	166.2	53.11	14.33
Extremadura	397.5	93.1	54.96	18.98	225.9	41.7	60.99	15.58	171.5	51.4	49.12	23.06
Galicia	1,091.4	141.0	52.66	11.44	575.7	64.7	57.15	10.10	515.7	76.4	48.54	12.90
Madrid, Comunidad de	3,169.8	426.0	63.90	11.85	1,638.7	188.4	68.60	10.31	1,531.0	237.7	59.68	13.44
Murcia, Región de	643.3	99.9	59.54	13.44	363.5	49.1	66.49	11.90	279.8	50.7	52.67	15.35
Navarra, Comunidad Foral de	288.8	33.6	59.24	10.44	149.3	19.3	63.10	11.42	139.5	14.4	55.52	9.35
País Vasco	953.2	90.8	56.75	8.69	492.5	48.1	61.18	8.89	460.8	42.7	52.66	8.48
Rioja, La	140.4	17.7	59.99	11.21	75.6	8.0	64.95	9.54	64.8	9.8	55.26	13.07
Ceuta	28.4	11.7	61.13	29.21	17.4	5.2	68.48	23.03	11.0	6.5	53.66	37.22
Melilla	30.5	8.7	63.44	22.12	17.3	3.9	69.17	18.23	13.2	4.8	57.84	26.68

* Data below 5,000 are subject to strong variations, due to sampling errors

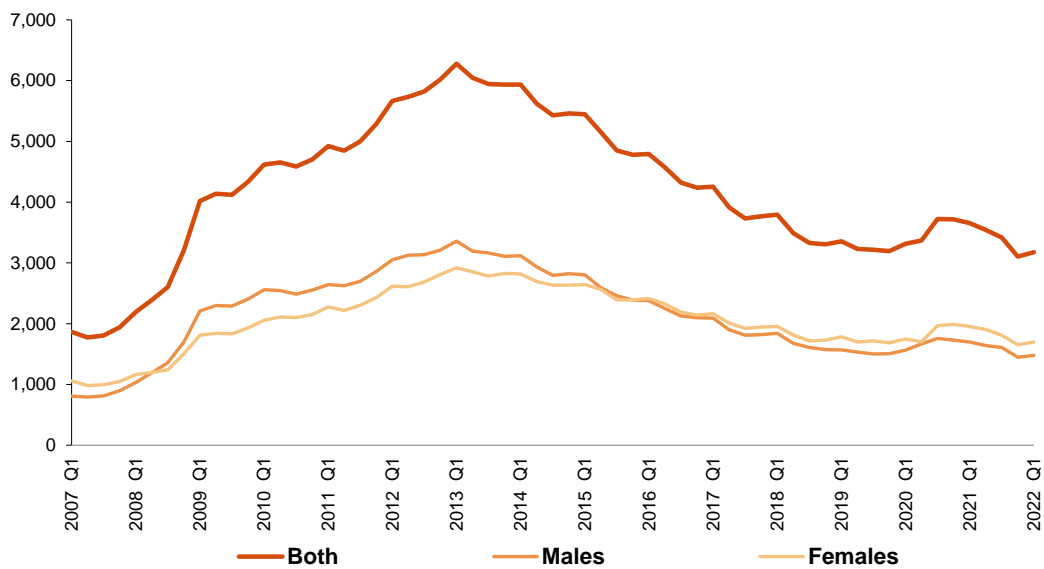
EAAPS - (ANNEX TO TABLES) Q1 2022 (7/7)

Employed and Unemployed by sex EAPS
First Quarter 2022

Employed. Thousands



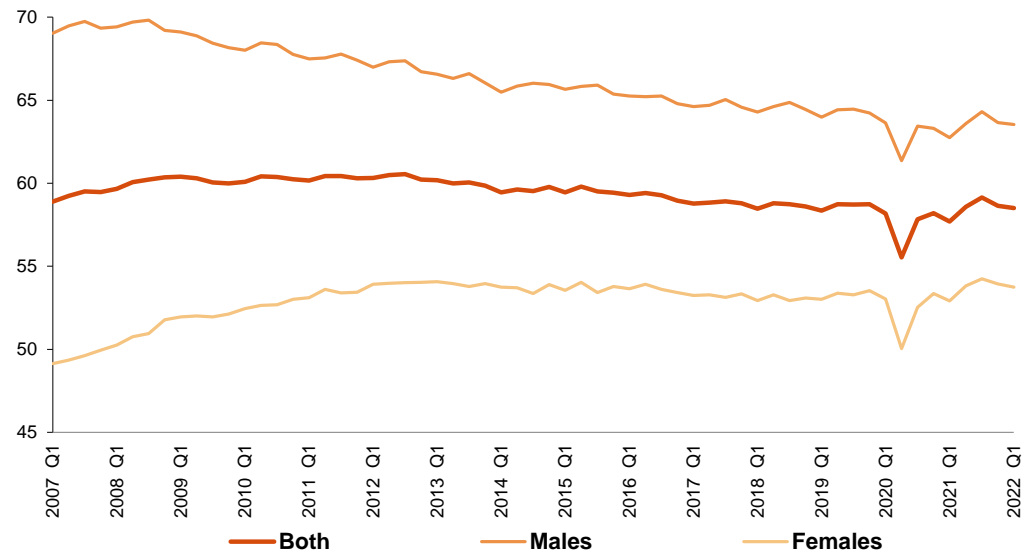
Unemployed. Thousands



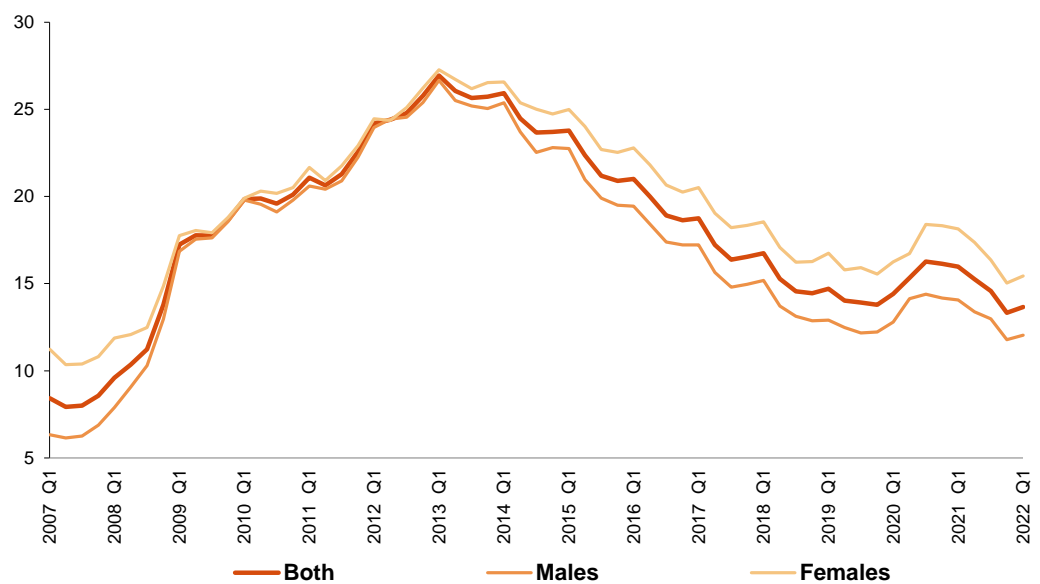
Activity and unemployment rates by sex
First Quarter 2022

EAPS

Activity rate. Percentage



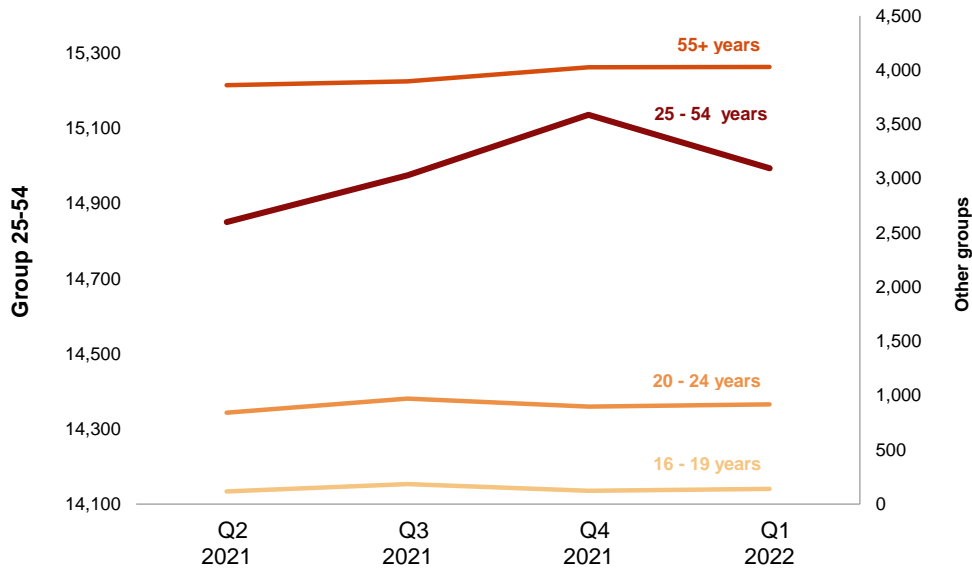
Unemployment rate. Percentage



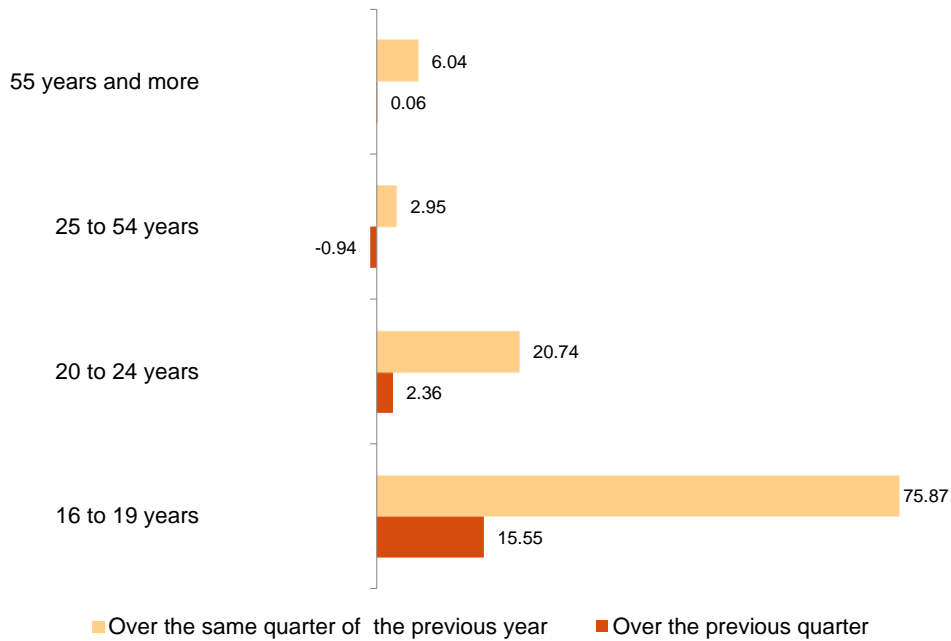
Employment by age
First Quarter 2022

EAPS

Employment. Thousands



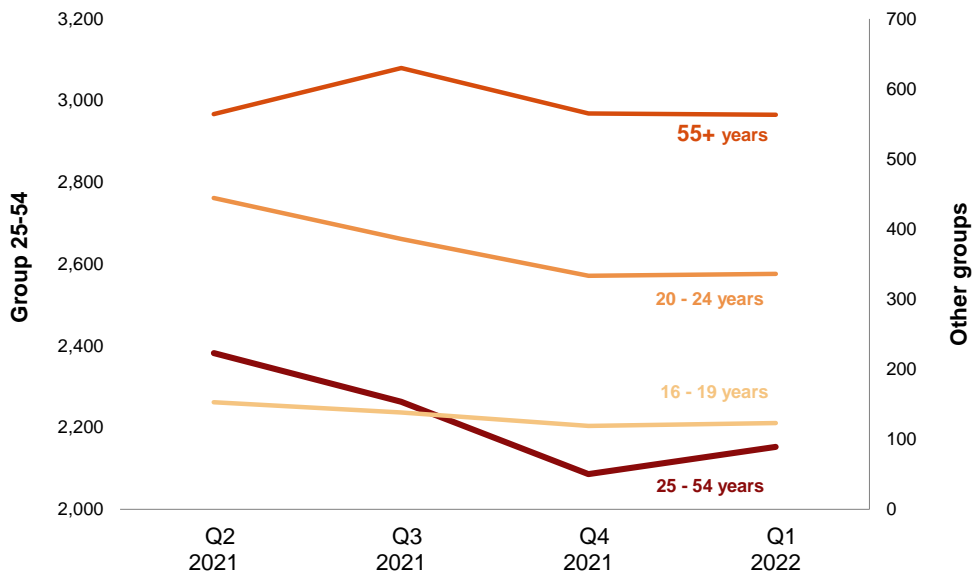
Variation of employment. Thousands



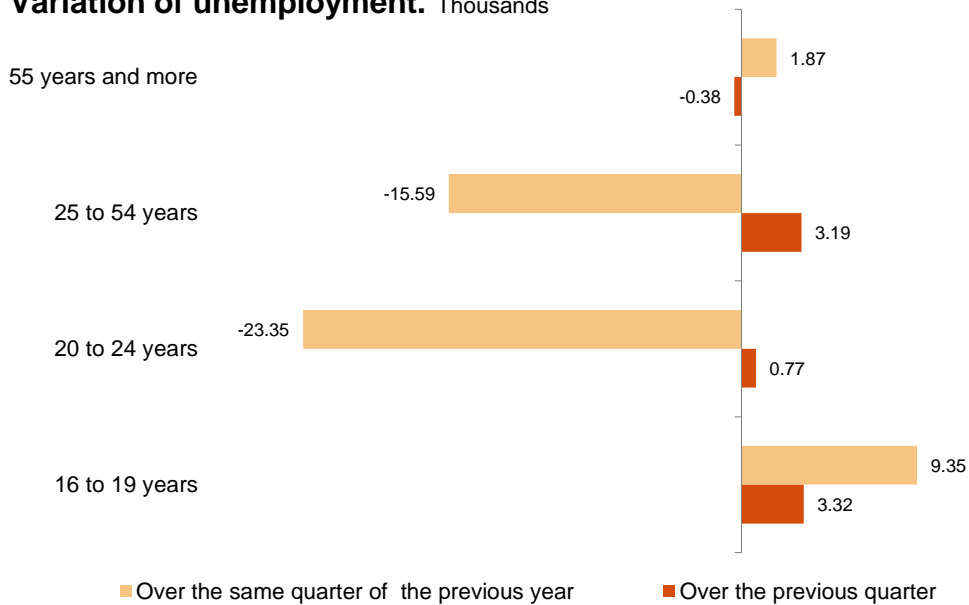
Unemployment by age
First Quarter 2022

EAPS

Unemployment. Thousands



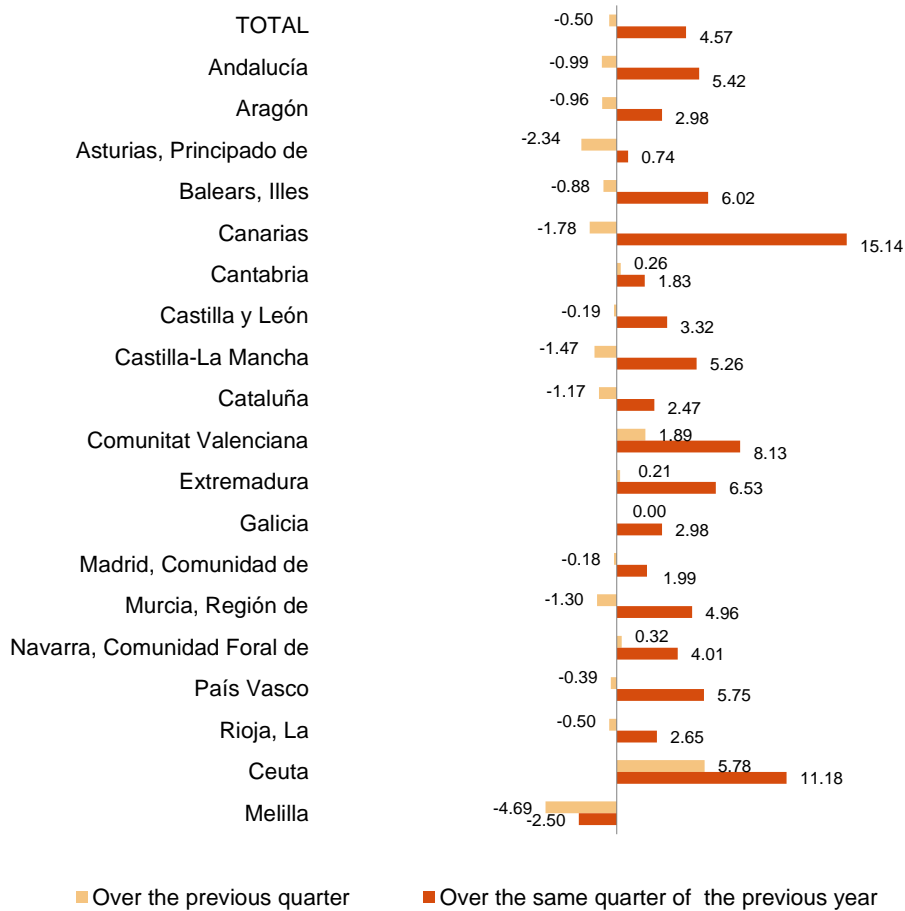
Variation of unemployment. Thousands



First Quarter 2022

EAPS

Variation of employment. Percentage



Unemployment rate Percentage
(Spain= 13.65 %)

