

Economically Active Population Survey (EAPS) Second quarter of 2007

Main results

- The number of employed persons in Spain stands at 20,367,300 in the second quarter of 2007 (298,100 more than in the previous quarter). In the past year, 674,200 jobs were created. The interannual employment growth rate stands at 3.42%.
- The activity rate is 58.86%, almost three tenths higher than in the first quarter of 2007. For men, the rate is 69.33% (four tenths higher than the previous quarter) and for women, it is 48.78% (sixteen hundredths higher).
- The number of unemployed persons decreases by 96,100 persons with respect to the previous quarter, and stands at 1,760,000 persons. The unemployment rate has decreased more than half a point to 7.95%, the lowest rate since the fourth quarter of 1978. The number of unemployed persons has decreased by 77,000 persons during the last 12 months.
- The total number of wage earners rises by 264,800 persons as compared with the previous quarter, and stands at 16,779,400. The number of employees has increased by 667,800 in the past year. Wage earners with a permanent contract increase by 197,800 persons this quarter, while temporary employees do so by 67,000. The temporary rate decreases one tenth to stand at 31.85% from the 31.95% registered the previous month.
- All Autonomous Communities experience an increase in employment this quarter. The highest increases were observed in Illes Balears (50,400 more employed persons), Cataluña (47,600), Andalucía (43,300), Galicia (30,200), Comunitat Valenciana (25,100) and Aragón (21,200).
- The most pronounced drop in unemployment is produced in Cataluña (21,200 fewer unemployed persons), Illes Balears (17,200), Andalucía (16,800), Galicia (14,700) and Madrid (10,100). In Comunitat Valenciana, unemployment grew by 6,900 persons.

The number of active persons in Spain stands at 22,127,300 persons.

The total number of active persons for the second quarter of 2007 was 22,127,300, with an increase of 202,000 persons on the figure from the previous quarter. The activity rate rose almost three tenths to 58.86%.

The number of active women increased by 68,300 this quarter and is estimated at 9,338,900 persons. The female activity rate increased 16 hundredths and reached 48.78%. On the other hand, the number of active men stood at 12,788,300, with an increase of 133,700 persons. The male activity rate rose four tenths this quarter and stood at 69.33%.

In the past twelve months, the number of active persons has increased by 597,200 persons, of whom 308,400 are women.

The activity rate for the foreign population (75.96%) fell 33 hundredths this quarter. It was more than 19 points higher than the rate for the Spanish population (56.76%) which increased almost three tenths. To a large extent, the age distribution of the foreign nationals explains this difference.

Employment grows by 298,100 persons this quarter, reaching 20,367,300

The number of employed persons stood at 20,367,300 persons, 298,100 more than in the first quarter. In the last twelve months, the number of employed persons has increased by 674,200.

The interannual employment growth rate was 3.42%, almost the same as the rate of 3.45% registered the previous quarter.

Employment grew somewhat more among men (153,100 more than the previous quarter) than among women (144,900 more). In terms of interannual evolution, there were 370,500 more women and 288,800 more men employed this quarter.

The number of employed Spaniards rose by 197,600 persons, while employed foreign nationals increased by 100,400 persons during the last three months. In the second quarter of 2007, 13.52% of the total number of employed persons were foreign nationals.

The increase in employment took place in all age groups, with the populations aged 30 to 34 and 35 to 39 showing the most significant increase (56,700 and 48,800 more employed persons, respectively).

The number of employed persons grew in services (by 339,500 persons) and construction (49,100 more). In contrast, the number dropped in agriculture (69,000 fewer employed persons) and industry (21,500 fewer).

Regarding the evolution during the last twelve months, the interannual growth rate in services increased to 4.34% from the 3.50% registered the first quarter of 2007. In construction, interannual growth decreased to 7.62% from the 9.35% recorded in the previous quarter. The number of employed persons in agriculture decreased to 3.81% this quarter, as opposed to the positive interannual evolution of 0.52% that it had the first quarter of the year. Finally, in industry, employment showed a negative rate of 1.31%, compared to the drop of 0.25% registered in the previous quarter.

The number of wage earners increases by 264,800 persons, of whom 197,800 have a permanent contract

The total number of employees in the second quarter of 2007 was 16,779,400, with an increase of 264,800 persons with respect to the previous quarter. The number of wage earners with a permanent contract increased by 197,800, standing at 11,435,500 persons. Temporary employees increased by 67,000 persons, to a total of 5,343,900 persons.

The temporary rate dropped one tenth, from 31.95% to 31.85%.

In the last twelve months, the total number of wage earners increased by 667,800 persons. Employees with a permanent contract increased by 864,800 persons, while wage earners with a temporary contract decreased by 197,000 persons.

The salary rate rose almost one tenth, standing at 82.38%.

In terms of **working hours**, 2,440,100 employed part-time workers were registered during this quarter (1,925,100 women and 515,100 men). With respect to the previous quarter, the number of persons working part-time decreased by 54,700 persons, of whom 35,000 were women.

On the other hand, full-time employed persons increased by 352,800 as compared with the previous quarter. The number of women working full-time rose by 179,900 persons, and the number of men rose by 172,900.

The percentage of part-time employed persons was 11.98%, which indicates a drop of 45 hundredths with respect to the percentage registered the first quarter (12.43%)

Unemployment is down by 96,100 persons, and the unemployment rate stands at 7.95%

Unemployment dropped by 96,100 persons in the second quarter of 2007. The total number of unemployed persons in Spain was 1,760,000, with a decrease of 77,000 persons during the last twelve months.

The unemployment rate decreased more than half a point to stand at 7.95%. It had not dropped below 8% since the fourth quarter of 1978.

The decrease in unemployment this quarter affected women (whose unemployment decreased by 76,700 persons) more than men (19,400 fewer). The unemployment rate for men was 6.1%, which was 22 hundredths less than in the first quarter of the year. The rate for women was 10.49%, that is, nine tenths less than the previous quarter.

Unemployment decreased by 87,700 persons among Spaniards and 8,400 persons among foreign nationals. The unemployment rate for Spaniards was 7.29% (half a point lower than the previous quarter) while the rate for foreign nationals was 11.97% (64 hundredths lower).

Regarding age, the drop in unemployment was concentrated among persons aged 25 to 54 (105,600 fewer unemployed persons). In the youngest age group (16 to 19), unemployment increased by 24,300 persons.

By sectors, unemployment decreased with respect to the first quarter of the year in services (45,200 fewer unemployed persons), industry (26,000) and construction (10,500); in contrast, unemployment increased in agriculture (13,900 more unemployed persons) and among

those persons seeking their first job (25,900). Regarding the group of persons who lost their jobs over a year ago, the drop in unemployment stood at 54,300 persons.

The unemployment rate for the reference person of the household decreased 44 hundredths, standing below 6% (5.85%). The rate for the spouse or partner dropped nine tenths to 7.09%, and the rate for sons or daughters decreased 43 hundredths to 12.52%

The number of households in which all active members are employed increases by 168,900

The number of households in which all members worked stood at 10,652,900, indicating 168,900 households more than in the previous quarter, and 379,000 more than in the previous year. The number of households in which all active members were unemployed decreased by 33,600.

Mobility as related to activity

Regarding quarter-on-quarter mobility as related to activity, the proportion of unemployed persons who had been employed three months prior was 27.40%, which indicates a decrease of 1.7 points over the rate registered in the first quarter of the year.

The percentage of employed persons who had also been employed the previous quarter stood at 93.27%, three tenths more than three months ago.

The percentage of employed persons who had been unemployed during the previous quarter was 3.25%, that is, 25 hundredths more than the figure recorded in the first quarter of 2007. The percentage of employed persons who had been inactive was 3.52% (almost the same percentage as in the first quarter of 2007).

The probability of remaining unemployed was 42.30% (15 hundredths more than in the first quarter of 2007) and for remaining inactive, the rate was 92.75%, almost one tenth higher than the probability from three months ago.

Results by Autonomous Communities and provinces

The greatest increases in the number of **active persons** this quarter were recorded in Illes Balears (33,100 more active persons), Comunitat Valenciana (32,000), Andalucía (26,500), Cataluña (26,400), Aragón (19,700) and Galicia (15,500). There were no significant drops in the number of active persons in any Community this quarter.

In terms of **employment**, the Autonomous Communities with the most significant growth as compared with the previous quarter, in absolute values, were Illes Balears (50,400 more employed persons), Cataluña (47,600), Andalucía (43,300), Galicia (30,200), Comunitat Valenciana (25,100) and Aragón (21,200). There were no drops in employment in any Community this quarter.

Regarding the interannual variation, the most noteworthy increases in employment were recorded in the Autonomous Communities of Andalucía (136,900), Cataluña (94,800) and Madrid (82,800).

As for the evolution of **unemployment**, the greatest drops this quarter took place in Cataluña (21,200), Illes Balears (17,200), Andalucía (16,800), Galicia (14,700) and Madrid (10,100). In Comunitat Valenciana, unemployment rose by 6,900 persons.

In the last twelve months, Madrid (with 19,300 fewer unemployed persons), Canarias (13,300), País Vasco (11,200), Castilla y León (11,000), Galicia (10,600) and Andalucía (10,000) were the Autonomous Communities in which the number of unemployed persons decreased the most. In Comunitat Valenciana, unemployment has risen by 29,000 persons over the last twelve months.

La Rioja (4.94%), Navarra (5.26%), Aragón (5.30%) and Illes Balears (5.50%) were the Autonomous Communities with the lowest **unemployment rates** in the second quarter of 2007. País Vasco (6.04%), Cataluña (6.09%), Madrid (6.25%), Cantabria (6.34%) and Murcia (6.57%) followed, with rates below 7%.

The highest unemployment rates were registered in Extremadura (12.15%), Andalucía (11.96%) and Canarias (9.78%).

On the other hand, Cataluña (6.92%), Madrid (7.35%), País Vasco (7.37%), Illes Balears (7.39%), La Rioja (7.43%) and Aragón (7.62%) recorded female unemployment rates below 8%. Cataluña, Madrid and País Vasco offered the least diverging rates by sex, with a difference of less than three points.

The Autonomous Communities with the greatest differences between female and male unemployment rates were Extremadura and Andalucía (more than eight points).

By provinces, Córdoba (13.67%), Cádiz (13.42%), Badajoz (13.25%) and Sevilla (13.01%) registered the highest unemployment rates this quarter.

The Autonomous Communities with the highest **activity rates** in the second quarter of 2007 were Illes Balears (65.41%), Madrid (63.68%), Cataluña (62.27%), Canarias (61.35%), Navarra (61.28%), Murcia (60.59%) and Comunitat Valenciana (60.1%), all above 60%.

The lowest activity rates were recorded in Asturias (50.32%), Extremadura (52.36%), Castilla y León (53.42%) and Galicia (54.38%).

By provinces, in addition to Illes Balears, Madrid, Navarra and Murcia, activity rates above 60% were registered in Girona (66.92%), Las Palmas (63.36%), Almería (63.25%), Barcelona (61.99%), Tarragona (61.95%), Castellón (61.47%), Álava (61.46%), Valencia (61.24%), Zaragoza (61.04%) and Valladolid (60.41%).

For further information see **INEbase-www.ine.es** All press releases at: **www.ine.es/prensa/prensa.htm**

Press office: Telephone numbers: 91 583 93 63 / 94 08 – Fax: 91 583 90 87 - **gprensa@ine.es**

Information area: Telephone: 91 583 91 00 – Fax: 91 583 91 58 – **www.ine.es/infoine**

Methodological note

General characteristics

The Economically Active Population Survey is a continuous, sample-based study, aimed at family dwellings, and which has been conducted since 1964.

3,588 census sections are chosen for this Survey, among the more than 30,000 into which Spain is divided. On average, 18 households are surveyed in each of them, except in Barcelona, Madrid, Sevilla, Valencia and Zaragoza, where the number of interviews is 22. Thus, the sample size is approximately 65,000 dwellings, providing information on some 180,000 persons. These data are collected through personal and telephone interviews, conducted by National Statistics Institute employees, attached to the provincial offices thereof. The information is carefully filtered and processed using computer means. Results are obtained within the month after the end of the reference quarter for the data.

Main definitions

Active persons: persons aged 16 or over who, during the reference week (the week prior to that when the interview is held), supplied labour for the production of economic goods and services or were available to do so, and carried out actions to incorporate themselves into said production. They are divided into employed and unemployed persons.

Employed persons: persons aged 16 or over who, during the reference week, worked for at least one hour, in exchange for payment (salary, wage, business profit, etcetera) in cash or in kind. Persons who, having a job, had been temporarily absent from it due to illnesses, vacations, etcetera are also employed persons.

Employed persons are classified, according to their professional status, into non-wage earners (employers, own-account workers without employees and independent workers, cooperative members, family assistance) and employees (public or private).

According to the length of the working day, employed persons are classified as full-time and part-time workers. The usual working week cannot be shorter than 30 hours in the first case, nor exceed 35 hours in the second.

Wage earners are classified into permanent and temporary. For the latter, the end of their contract or working relationship is set by means of objective conditions, such as the expiry of a certain period of time, the completion of a specific task, etcetera.

A significant category within employment is that of **time-related underemployment**, defined at the 16th International Labour Statisticians Conference (Geneva, 1998). The EAPS considers persons in time-related underemployment as employed persons who would like to work more hours, who are available to work more hours and whose effective working hours in the reference week are fewer than the number of hours usually worked by employed persons working full-time in the same branch of activity as that in which the underemployed person develops his/her main job.

Unemployed persons: Individuals, aged 16 or over who, during the reference week, were jobless, available for work, and actively looking for a job. Persons who have already found a

job and are waiting to start work, are also considered as unemployed, provided that they meet the first two conditions.

According to European Commission Regulation 1897/2000, the following are considered as active seeking methods in the four weeks prior to the interview:

- Having been in contact with a public employment office to find work, whoever took the initiative (the renewal of registration due to purely administrative reasons is not an active step)
- Having been in contact with a private office (temporary work agency, firm specialising in recruitment, ...) for the purpose of finding work.
- Applying to employers directly.
- Having searched via personal relations, trade unions, etc.
- Placing or answering job advertisements.
- Studying job advertisements.
- Taking a recruitment test or examination or being interviewed.
- Having looked for land, premises or equipment.
- Applying for permits, licences or financial resources.

Inactive persons: Individuals aged 16 or over not included in any of the above categories.

Economically Active Population Survey Second Quarter 2007

National results

	Current quarter	Variation on		Variation on same	
		previous quarter		quarter, previous year	
		Difference	Percentage	Difference	Percentage
1. Population aged 16 years and over by sex and labour status					
(Absolute figures in thousands)					
BOTH SEXES					
Population aged 16 years and over	37591.9	163.1	0.44	660.7	1.79
Active population	22127.3	202.0	0.92	597.2	2.77
- Employed	20367.3	298.1	1.49	674.2	3.42
- Unemployed	1760.0	-96.1	-5.18	-77.0	-4.19
Inactive	15464.6	-38.9	-0.25	63.5	0.41
Activity rate	58.86	0.28	-	0.56	-
Unemployment rate	7.95	-0.51	-	-0.58	-
Population aged 16 to 64 years	30301.7	133.7	0.44	553.9	1.86
Activity rate (16-64)	72.57	0.39	-	0.73	-
Unemployment rate (16-64)	7.99	-0.52	-	-0.59	-
Employment rate (16-64)	66.77	0.73	-	1.10	-
MALES					
Population aged 16 years and over	18446.5	87.5	0.48	354.6	1.96
Active population	12788.3	133.7	1.06	288.8	2.31
- Employed	12007.7	153.1	1.29	303.7	2.60
- Unemployed	780.6	-19.4	-2.43	-14.9	-1.87
Inactive	5658.2	-46.2	-0.81	65.8	1.18
Activity rate	69.33	0.40	-	0.24	-
Unemployment rate	6.10	-0.22	-	-0.26	-
Population aged 16 to 64 years	15334.3	73.7	0.48	304.3	2.02
Activity rate (16-64)	82.78	0.53	-	0.35	-
Unemployment rate (16-64)	6.14	-0.22	-	-0.27	-
Employment rate (16-64)	77.70	0.68	-	0.55	-
FEMALES					
Population aged 16 years and over	19145.4	75.6	0.40	306.1	1.62
Active population	9338.9	68.3	0.74	308.4	3.41
- Employed	8359.6	144.9	1.76	370.5	4.64
- Unemployed	979.3	-76.7	-7.26	-62.1	-5.97
Inactive	9806.5	7.3	0.07	-2.3	-0.02
Activity rate	48.78	0.16	-	0.84	-
Unemployment rate	10.49	-0.90	-	-1.05	-
Population aged 16 to 64 years	14967.4	60.0	0.40	249.6	1.70
Activity rate (16-64)	62.11	0.24	-	1.09	-
Unemployment rate (16-64)	10.53	-0.91	-	-1.06	-
Employment rate (16-64)	55.58	0.78	-	1.62	-

2. Spanish population (1) aged 16 years and over by labour status

	(Absolute figures in thousands)				
SPANISH POPULATION AGED 16 YEARS AND OVER	33473.7	24.5	0.07	96.3	0.29
Active population	18999.0	109.9	0.58	223.7	1.19
- Employed	17613.5	197.6	1.13	345.7	2.00
- Unemployed	1385.4	-87.7	-5.96	-122.0	-8.09
Inactive	14474.8	-85.4	-0.59	-127.4	-0.87
Activity rate	56.76	0.29	-	0.51	-
Unemployment rate	7.29	-0.51	-	-0.74	-

(1) including dual nationality

National results

	Current quarter	Variation on previous quarter		Variation on same quarter, previous year	
		Difference	Percentage	Difference	Percentage

3. Foreign population aged 16 years and over by labour status

	(Absolute figures in thousands)				
FOREIGN POPULATION AGED 16 YEARS AND OVER	4118.2	138.6	3.48	564.4	15.88
Active population	3128.3	92.1	3.03	373.5	13.56
- Employed	2753.8	100.4	3.79	328.5	13.55
- Unemployed	374.5	-8.4	-2.19	44.9	13.64
Inactive	989.9	46.5	4.93	191.0	23.90
Activity rate	75.96	-0.33	-	-1.56	-
Unemployment rate	11.97	-0.64	-	0.01	-

4. Employed by sex, age group and economic sector

	(Absolute figures in thousands)				
BOTH SEXES	20367.3	298.1	1.49	674.2	3.42
16 to 19 years	396.2	30.0	8.19	23.5	6.30
20 to 24 years	1592.3	9.2	0.58	-61.2	-3.70
25 to 29 years	2883.5	35.2	1.24	55.3	1.95
30 to 34 years	3188.4	56.7	1.81	162.0	5.35
35 to 39 years	2964.2	48.8	1.67	87.3	3.03
40 to 44 years	2774.6	30.2	1.10	148.2	5.64
45 to 49 years	2418.7	22.5	0.94	92.0	3.96
50 to 54 years	1884.5	32.7	1.77	105.6	5.94
55 and over	2264.9	32.8	1.47	61.6	2.80
MALES	12007.7	153.1	1.29	303.7	2.60
16 to 19 years	258.0	17.0	7.05	29.9	13.10
20 to 24 years	901.4	-7.9	-0.87	-24.9	-2.69
25 to 29 years	1599.8	31.7	2.02	19.4	1.23
30 to 34 years	1830.2	16.9	0.93	70.6	4.01
35 to 39 years	1748.1	33.7	1.96	48.2	2.84
40 to 44 years	1613.1	21.8	1.37	66.5	4.30
45 to 49 years	1418.4	5.3	0.38	35.1	2.54
50 to 54 years	1158.3	17.5	1.54	51.2	4.62
55 and over	1480.3	17.1	1.17	7.7	0.53
FEMALES	8359.6	144.9	1.76	370.5	4.64
16 to 19 years	138.1	13.0	10.39	-6.4	-4.43
20 to 24 years	690.9	17.1	2.54	-36.4	-5.00
25 to 29 years	1283.7	3.5	0.27	35.8	2.87
30 to 34 years	1358.2	39.8	3.02	91.4	7.21
35 to 39 years	1216.1	15.1	1.26	39.1	3.32
40 to 44 years	1161.5	8.4	0.73	81.7	7.57
45 to 49 years	1000.2	17.2	1.75	57.0	6.04
50 to 54 years	726.2	15.2	2.13	54.5	8.11
55 and over	784.7	15.7	2.04	53.9	7.37
TOTAL EMPLOYED	20367.3	298.1	1.49	674.2	3.42
Agriculture	921.0	-69.0	-6.97	-36.4	-3.81
Industry	3243.8	-21.5	-0.66	-43.0	-1.31
Construction	2713.7	49.1	1.84	192.1	7.62
Services	13488.7	339.5	2.58	561.6	4.34

National results

	Current quarter	Variation on previous quarter		Variation on same quarter, previous year	
		Difference	Percentage	Difference	Percentage

5. Employed by professional status, type of contract and working hours

	(Absolute figures in thousands)				
TOTAL EMPLOYED	20367.3	298.1	1.49	674.2	3.42
Self-employed workers	3578.7	36.9	1.04	12.8	0.36
- Employers	1109.7	25.6	2.36	21.6	1.99
- Independent workers	2161.4	52.4	2.48	53.8	2.55
- Cooperatives members	84.8	-6.6	-7.19	-1.7	-1.93
- Family workers	222.8	-34.5	-13.39	-61.0	-21.49
Employees	16779.4	264.8	1.60	667.8	4.14
- With a permanent job	11435.5	197.8	1.76	864.8	8.18
- With a temporary job	5343.9	67.0	1.27	-197.0	-3.55
Others	9.3	-3.7	-28.58	-6.4	-40.91
FULL-TIME EMPLOYED	17927.2	352.8	2.01	638.4	3.69
Males	11492.6	172.9	1.53	312.6	2.80
Females	6434.5	179.9	2.88	325.8	5.33
PART-TIME EMPLOYED	2440.1	-54.7	-2.19	35.8	1.49
Males	515.1	-19.8	-3.70	-8.9	-1.69
Females	1925.1	-35.0	-1.78	44.7	2.38

6. Unemployed by sex, age group, and economic sector

	(Absolute figures in thousands)				
BOTH SEXES	1760.0	-96.1	-5.18	-77.0	-4.19
16 to 19 years	162.8	24.3	17.55	-5.4	-3.18
20 to 24 years	279.4	-5.1	-1.81	-4.2	-1.50
25 to 54 years	1188.5	-105.6	-8.16	-72.2	-5.73
55 and over	129.2	-9.7	-6.97	4.8	3.88
MALES	780.6	-19.4	-2.43	-14.9	-1.87
16 to 19 years	82.7	15.7	23.34	6.2	8.13
20 to 24 years	125.1	3.9	3.22	-6.5	-4.93
25 to 54 years	501.7	-40.8	-7.52	-13.3	-2.59
55 and over	71.1	1.8	2.58	-1.3	-1.80
FEMALES	979.3	-76.7	-7.26	-62.1	-5.97
16 to 19 years	80.1	8.7	12.12	-11.6	-12.62
20 to 24 years	154.3	-9.0	-5.54	2.2	1.47
25 to 54 years	686.8	-64.8	-8.62	-58.9	-7.90
55 and over	58.1	-11.5	-16.49	6.1	11.78
TOTAL UNEMPLOYED	1760.0	-96.1	-5.18	-77.0	-4.19
Agriculture	88.0	13.9	18.80	-8.2	-8.52
Industry	122.1	-26.0	-17.53	-18.4	-13.11
Construction	164.1	-10.5	-6.01	4.0	2.48
Services	678.1	-45.2	-6.24	-26.3	-3.73
Lost their job more than 1 year ago	496.5	-54.3	-9.85	-28.9	-5.50
First job seekers	211.3	25.9	13.94	0.7	0.35

National results

	Current quarter	Variation on previous quarter		Variation on same quarter, previous year	
		Difference	Percentage	Difference	Percentage

7. Unemployment rate by relationship with the reference person

TOTAL	7.95	-0.51	-	-0.58	-
Reference person	5.85	-0.44	-	-0.27	-
Spouse or partner	7.09	-0.91	-	-0.63	-
Child	12.52	-0.43	-	-1.21	-
Other relatives	11.35	-0.17	-	-0.04	-
Unrelated persons	9.79	2.23	-	2.08	-

8. Household data

TOTAL HOUSEHOLDS	16230.6	116.5	0.72	416.9	2.64
Households with at least one active memb	12231.0	95.2	0.78	313.0	2.63
- All member employed	10652.9	168.9	1.61	379.0	3.69
- All member unemployed	379.7	-33.6	-8.14	-34.4	-8.30
Households without any active population	3999.6	21.3	0.54	103.8	2.66

Mobility according to activity in current and previous quarter

Classification in previous quarter	Classification in current quarter			
	Total	Employed	Unemployed	Inactive
BOTH SEXES				
Total	100.00	100.00	100.00	100
Employed	53.53	93.27	27.40	4.51
Unemployed	4.77	3.20	42.30	2.75
Inactive	41.70	3.52	30.30	92.75
MALES				
Total	100.00	100.00	100.00	100
Employed	64.68	94.81	33.87	4.81
Unemployed	4.17	2.68	39.60	2.68
Inactive	31.15	2.51	26.54	92.51
FEMALES				
Total	100.00	100.00	100.00	100
Employed	42.87	91.06	22.35	4.34
Unemployed	5.35	3.95	44.41	2.78
Inactive	51.78	4.98	33.24	92.88

Grossing up factors of current quarter (forward analysis)

Results by Autonomous Communities

	Current quarter	Variation on previous quarter		Variation on same quarter, previous year	
		Difference	Percentage	Difference	Percentage

1. Population aged 16 years and over

(Absolute figures in thousands)

TOTAL	37591.9	163.1	0.44	660.7	1.79
Andalucía	6549.7	31.5	0.48	124.8	1.94
Aragón	1094.1	4.1	0.38	15.9	1.47
Asturias (Principado de)	937.1	0.1	0.01	0.0	0.00
Balears (Illes)	849.6	6.0	0.71	25.6	3.10
Canarias	1670.3	10.1	0.61	41.8	2.57
Cantabria	488.1	1.3	0.27	5.6	1.16
Castilla y León	2152.8	2.7	0.12	10.5	0.49
Castilla-La Mancha	1623.7	9.6	0.59	37.8	2.39
Cataluña	6000.4	30.1	0.50	128.1	2.18
Comunitat Valenciana	4035.4	26.9	0.67	108.5	2.76
Extremadura	897.1	1.6	0.18	5.7	0.64
Galicia	2379.7	2.3	0.10	7.7	0.33
Madrid (Comunidad de)	5086.5	22.5	0.44	95.2	1.91
Murcia (Región de)	1128.8	8.9	0.79	33.1	3.02
Navarra (Comunidad Foral de)	499.4	1.7	0.34	6.5	1.31
País Vasco	1829.9	1.8	0.10	7.6	0.42
Rioja (La)	261.9	1.2	0.48	4.9	1.89
Ceuta	56.2	0.2	0.30	0.3	0.51
Melilla	51.2	0.4	0.87	1.2	2.34

2. Active population

(Absolute figures in thousands)

TOTAL	22127.3	202.0	0.92	597.2	2.77
Andalucía	3675.1	26.5	0.73	126.8	3.57
Aragón	647.8	19.7	3.14	37.0	6.05
Asturias (Principado de)	471.5	1.6	0.35	3.0	0.64
Balears (Illes)	555.7	33.1	6.33	13.1	2.42
Canarias	1024.7	5.8	0.56	29.7	2.98
Cantabria	273.6	1.6	0.60	8.6	3.23
Castilla y León	1150.0	9.3	0.81	16.8	1.48
Castilla-La Mancha	906.1	10.2	1.14	36.7	4.23
Cataluña	3736.4	26.4	0.71	86.2	2.36
Comunitat Valenciana	2425.2	32.0	1.34	87.8	3.75
Extremadura	469.7	-0.9	-0.19	11.8	2.58
Galicia	1294.2	15.5	1.22	32.9	2.61
Madrid (Comunidad de)	3239.0	-1.9	-0.06	63.5	2.00
Murcia (Región de)	684.0	11.9	1.77	32.0	4.91
Navarra (Comunidad Foral de)	306.0	1.4	0.45	9.1	3.06
País Vasco	1058.3	8.1	0.77	0.4	0.03
Rioja (La)	154.0	-0.1	-0.08	1.4	0.90
Ceuta	28.3	-0.1	-0.50	-1.4	-4.62
Melilla	27.6	1.8	6.85	1.8	6.96

* Data below 5000 are subject to strong variations, due to sampling error

Results by Autonomous Communities

	Current quarter	Variation on previous quarter		Variation on same quarter, previous year	
		Difference	Percentage	Difference	Percentage
3. Employed					
		(Absolute figures in thousands)			
TOTAL	20367.3	298.1	1.49	674.2	3.42
Andalucía	3235.6	43.3	1.36	136.9	4.42
Aragón	613.5	21.2	3.59	37.6	6.54
Asturias (Principado de)	428.7	3.7	0.87	-1.9	-0.43
Balears (Illes)	525.1	50.4	10.61	18.6	3.66
Canarias	924.5	9.8	1.07	42.9	4.87
Cantabria	256.3	3.6	1.41	8.9	3.61
Castilla y León	1066.2	10.1	0.95	27.8	2.68
Castilla-La Mancha	835.1	8.0	0.97	43.5	5.50
Cataluña	3508.7	47.6	1.38	94.8	2.78
Comunitat Valenciana	2213.6	25.1	1.15	58.7	2.73
Extremadura	412.7	3.5	0.85	17.4	4.41
Galicia	1196.2	30.2	2.59	43.5	3.77
Madrid (Comunidad de)	3036.6	8.2	0.27	82.8	2.80
Murcia (Región de)	639.0	15.0	2.40	38.6	6.43
Navarra (Comunidad Foral de)	289.9	0.9	0.32	9.5	3.38
País Vasco	994.4	14.1	1.44	11.6	1.18
Rioja (La)	146.4	2.7	1.86	3.1	2.14
Ceuta	22.9	0.7	3.24	0.0	0.11
Melilla	21.8	0.0	0.21	-0.2	-1.11

4. Unemployed					
		(Absolute figures in thousands)			
TOTAL	1760.0	-96.1	-5.18	-77.0	-4.19
Andalucía	439.5	-16.8	-3.67	-10.0	-2.23
Aragón	34.3	-1.5	-4.29	-0.7	-1.88
Asturias (Principado de)	42.8	-2.0	-4.56	4.9	12.86
Balears (Illes)	30.6	-17.2	-36.06	-5.4	-15.11
Canarias	100.2	-4.0	-3.87	-13.3	-11.71
Cantabria	17.3	-1.9	-9.96	-0.4	-2.10
Castilla y León	83.7	-0.8	-0.91	-11.0	-11.63
Castilla-La Mancha	71.0	2.2	3.26	-6.8	-8.73
Cataluña	227.7	-21.2	-8.52	-8.6	-3.62
Comunitat Valenciana	211.6	6.9	3.37	29.0	15.89
Extremadura	57.1	-4.4	-7.09	-5.6	-8.93
Galicia	98.0	-14.7	-13.04	-10.6	-9.73
Madrid (Comunidad de)	202.4	-10.1	-4.75	-19.3	-8.70
Murcia (Región de)	45.0	-3.1	-6.44	-6.6	-12.86
Navarra (Comunidad Foral de)	16.1	0.4	2.80	-0.4	-2.39
País Vasco	63.9	-6.0	-8.60	-11.2	-14.97
Rioja (La)	7.6	-2.8	-26.84	-1.7	-18.10
Ceuta	5.4	-0.9	-13.76	-1.4	(:)
Melilla	5.8	1.7	42.25	2.0	(:)

* Data below 5000 are subject to strong variations, due to sampling error

(:) The variation percentages calculated from low figures with high sampling errors are not significant

EAPS - (ANNEXE TO THE TABLES) Second Quarter 2007 (6/7)

Results by Autonomous Communities and Provinces

(Absolute figures in thousands and rates in percentage)

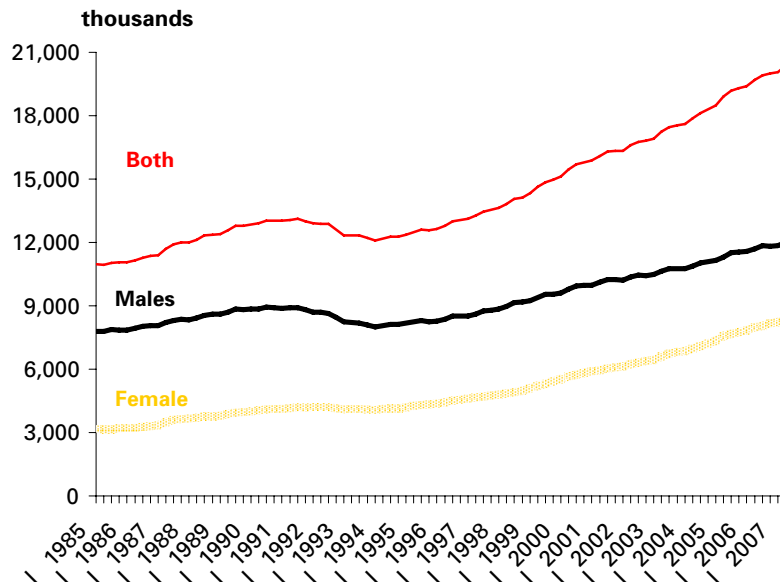
	Both sexes				Males				Females			
	Employed	Unemployed	Activity rate	Unem. rate	Employed	Unemployed	Activity rate	Unem. Rate	Employed	Unemployed	Activity rate	Unem. Rate
TOTAL	20367.3	1760.0	58.86	7.95	12007.7	780.6	69.33	6.10	8359.6	979.3	48.78	10.49
Andalucía	3235.6	439.5	56.11	11.96	2006.1	188.8	68.12	8.60	1229.4	250.8	44.48	16.94
Almería	303.8	34.6	63.25	10.22	188.7	17.4	73.72	8.45	115.1	17.2	51.79	12.98
Cádiz	464.6	72.0	55.25	13.42	296.1	30.9	68.44	9.45	168.4	41.1	42.47	19.63
Córdoba	303.4	48.0	54.77	13.67	195.1	19.1	68.04	8.91	108.3	28.9	42.00	21.09
Granada	344.4	45.7	53.40	11.72	214.0	17.5	65.23	7.55	130.4	28.3	42.23	17.82
Huelva	209.0	24.8	57.77	10.59	126.9	11.3	67.30	8.16	82.1	13.5	47.96	14.10
Jaén	232.9	30.9	49.35	11.73	154.3	12.5	63.74	7.51	78.6	18.4	35.56	18.98
Málaga	631.4	71.9	56.54	10.22	372.6	33.5	67.57	8.26	258.8	38.3	46.23	12.89
Sevilla	746.0	111.6	57.63	13.01	458.4	46.5	69.46	9.22	287.6	65.0	46.34	18.44
Aragón	613.5	34.3	59.21	5.30	358.9	13.3	68.54	3.59	254.5	21.0	50.01	7.62
Huesca	97.5	4.1	54.36	4.06	60.6	1.9	64.66	2.99	36.9	2.3	43.35	5.76
Teruel	64.7	2.6	54.90	3.91	40.5	1.0	66.06	2.36	24.2	1.7	43.17	6.41
Zaragoza	451.3	27.6	61.04	5.76	257.8	10.5	69.93	3.92	193.5	17.1	52.53	8.11
Asturias	428.7	42.8	50.32	9.07	245.0	17.6	59.00	6.72	183.8	25.1	42.46	12.04
Balears (Illes)	525.1	30.6	65.41	5.50	302.5	12.8	74.44	4.06	222.7	17.8	56.43	7.39
Canarias	924.5	100.2	61.35	9.78	547.2	44.2	71.09	7.48	377.3	56.0	51.68	12.92
Palmas (Las)	481.8	59.2	63.36	10.95	291.2	26.3	72.55	8.30	190.6	32.9	53.70	14.72
S.C.Tenerife	442.7	40.9	59.24	8.46	256.0	17.9	69.46	6.52	186.7	23.1	49.69	11.00
Cantabria	256.3	17.3	56.06	6.34	150.2	7.3	66.42	4.64	106.1	10.0	46.28	8.65
Cast. y Leon	1066.2	83.7	53.42	7.28	645.6	30.1	63.67	4.46	420.6	53.6	43.45	11.30
Ávila	69.8	4.8	51.90	6.46	45.2	1.8	63.75	3.84	24.6	3.0	39.44	10.92
Burgos	167.2	10.4	57.37	5.83	102.0	4.6	67.74	4.35	65.3	5.7	46.64	8.06
León	198.8	15.5	50.45	7.22	116.3	5.5	59.04	4.50	82.4	10.0	42.32	10.81
Palencia	68.6	5.0	50.00	6.76	41.4	2.2	60.57	5.16	27.3	2.7	39.88	9.09
Salamanca	132.0	15.7	49.38	10.61	79.4	4.3	59.16	5.19	52.6	11.3	40.59	17.71
Segovia	67.5	3.9	53.27	5.51	39.8	1.5	62.74	3.63	27.7	2.4	44.12	8.10
Soria	42.7	2.2	56.84	4.82	27.1	1.0	68.42	3.69	15.6	1.1	44.27	6.72
Valladolid	248.1	20.0	60.41	7.45	148.4	6.8	71.45	4.39	99.7	13.2	49.81	11.67
Zamora	71.5	6.4	45.36	8.16	46.0	2.3	56.04	4.68	25.5	4.1	34.60	13.84
Cast-Mancha	835.1	71.0	55.80	7.84	531.4	29.7	68.95	5.30	303.7	41.3	42.59	11.98
Albacete	168.9	16.9	57.37	9.08	104.4	7.4	69.15	6.58	64.6	9.5	45.63	12.84
Ciudad Real	204.8	20.1	53.22	8.95	132.8	7.2	67.61	5.17	72.0	12.9	39.39	15.19
Cuenca	79.2	6.3	47.78	7.34	51.9	2.2	60.35	4.08	27.3	4.1	35.15	12.97
Guadalajara	99.8	5.7	57.68	5.38	61.9	3.1	68.35	4.82	37.9	2.5	46.11	6.27
Toledo	282.3	22.1	59.07	7.26	180.4	9.8	73.09	5.15	101.9	12.3	44.76	10.78
Cataluña	3508.7	227.7	62.27	6.09	2012.2	116.3	72.03	5.47	1496.5	111.3	52.80	6.92
Barcelona	2580.4	172.6	61.99	6.27	1462.0	89.4	71.44	5.76	1118.3	83.2	52.95	6.93
Girona	360.9	27.4	66.92	7.06	210.1	13.2	76.63	5.90	150.8	14.2	57.12	8.63
Lleida	201.7	4.5	58.66	2.16	121.8	2.5	70.36	2.00	79.9	2.0	46.83	2.41
Tarragona	365.8	23.2	61.95	5.96	218.3	11.3	72.80	4.92	147.5	11.9	51.00	7.47
C.Valenciana	2213.6	211.6	60.10	8.72	1314.3	96.4	70.63	6.83	899.3	115.2	49.78	11.35
Alicante	787.3	89.2	58.11	10.18	464.9	39.8	68.76	7.88	322.4	49.4	48.01	13.29
Castellón	269.8	20.6	61.47	7.08	160.0	7.6	71.54	4.52	109.8	13.0	51.56	10.57
Valencia	1156.6	101.9	61.24	8.09	689.5	49.1	71.74	6.64	467.1	52.8	50.70	10.16
Extremadura	412.7	57.1	52.36	12.15	257.8	24.1	63.63	8.55	154.8	33.0	41.36	17.56
Badajoz	256.3	39.2	53.37	13.25	161.8	17.6	65.04	9.81	94.5	21.6	41.78	18.58
Cáceres	156.3	17.9	50.73	10.28	96.0	6.5	61.31	6.34	60.3	11.4	40.70	15.90
Galicia	1196.2	98.0	54.38	7.57	679.9	38.8	63.25	5.39	516.4	59.2	46.28	10.28
Coruña (A)	499.6	44.9	55.78	8.25	282.5	17.9	64.79	5.96	217.1	27.1	47.63	11.08
Lugo	136.9	7.0	46.44	4.88	77.1	2.7	53.75	3.33	59.8	4.4	39.73	6.80
Ourense	133.6	7.6	48.28	5.37	77.4	3.2	57.07	4.01	56.2	4.3	40.07	7.18
Pontevedra	426.1	38.4	57.99	8.27	242.9	15.0	67.36	5.81	183.2	23.4	49.42	11.34
Madrid	3036.6	202.4	63.68	6.25	1703.8	96.7	73.62	5.37	1332.7	105.7	54.47	7.35
Murcia	639.0	45.0	60.59	6.57	392.8	21.4	72.73	5.16	246.2	23.6	48.23	8.74
Navarra	289.9	16.1	61.28	5.26	172.8	4.8	71.64	2.73	117.1	11.3	51.06	8.77
País Vasco	994.4	63.9	57.83	6.04	567.8	29.9	67.22	5.01	426.7	33.9	48.96	7.37
Álava	153.2	7.0	61.46	4.36	91.7	2.3	72.57	2.44	61.4	4.7	50.47	7.10
Guipúzcoa	330.4	16.0	59.19	4.63	190.8	7.6	68.66	3.83	139.7	8.4	49.97	5.70
Vizcaya	510.8	40.8	56.07	7.40	285.3	20.0	64.86	6.56	225.5	20.8	48.00	8.44
Rioja (La)	146.4	7.6	58.81	4.94	89.9	3.1	70.60	3.32	56.5	4.5	46.88	7.43
Ceuta	22.9	5.4	50.29	19.09	15.4	2.6	64.99	14.29	7.4	2.8	36.01	27.50
Melilla	21.8	5.8	53.96	21.02	14.1	2.6	66.71	15.58	7.7	3.2	41.78	29.32

* Data below 5,000 are subject to strong variations, due to sampling errors

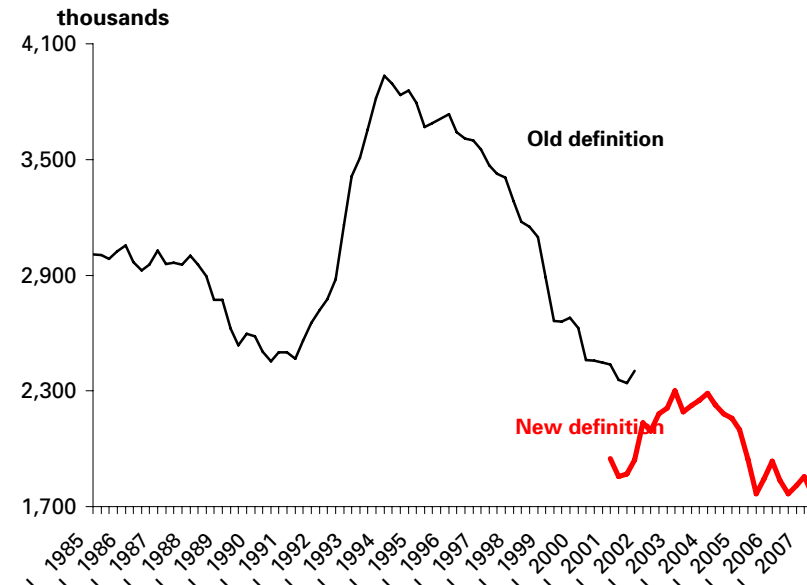
Employed and unemployed by sex

APS Second Quarter 2007

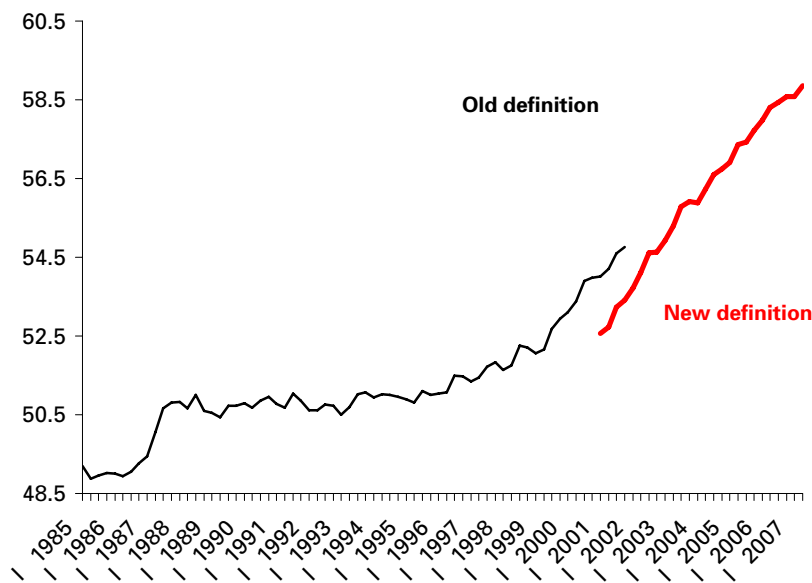
Employed



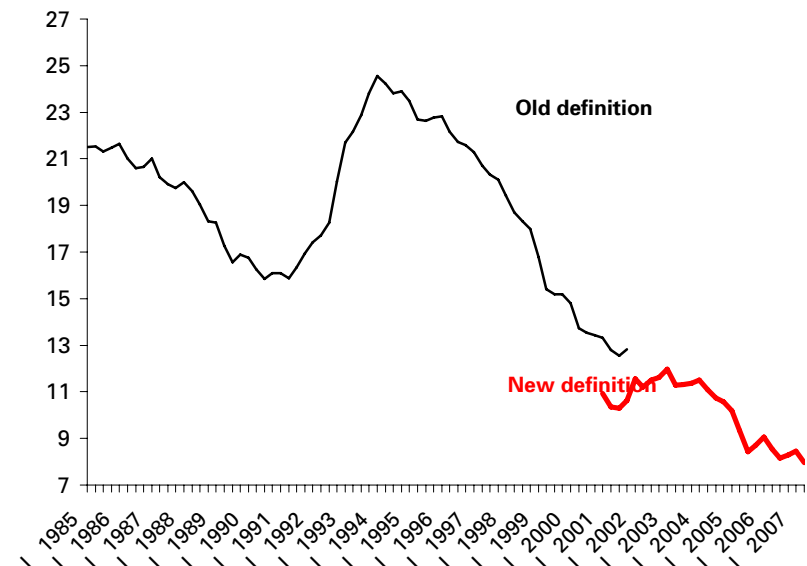
Unemployed



Activity rate



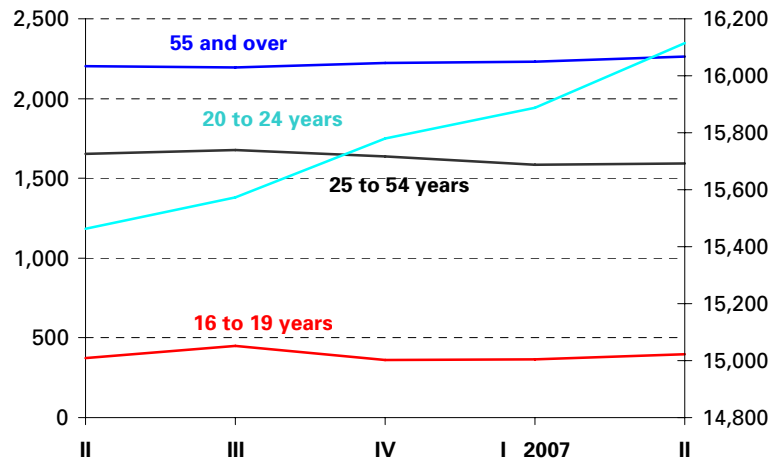
Unemployment rate



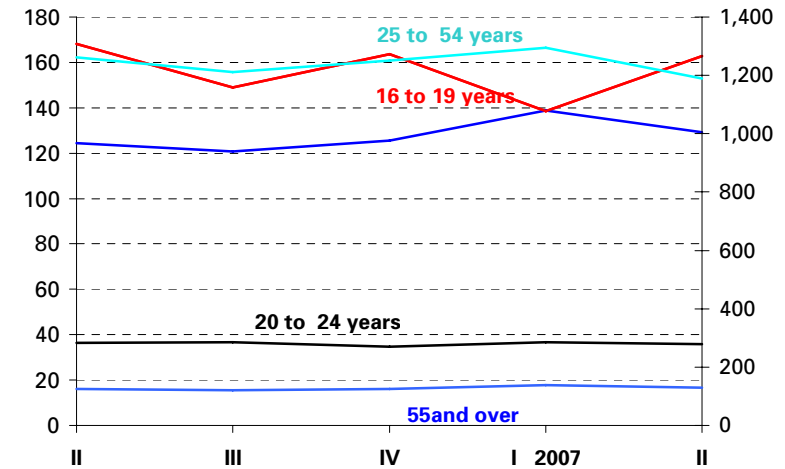
Employed and Unemployed by age

APS Second Quarter 2007

Employed

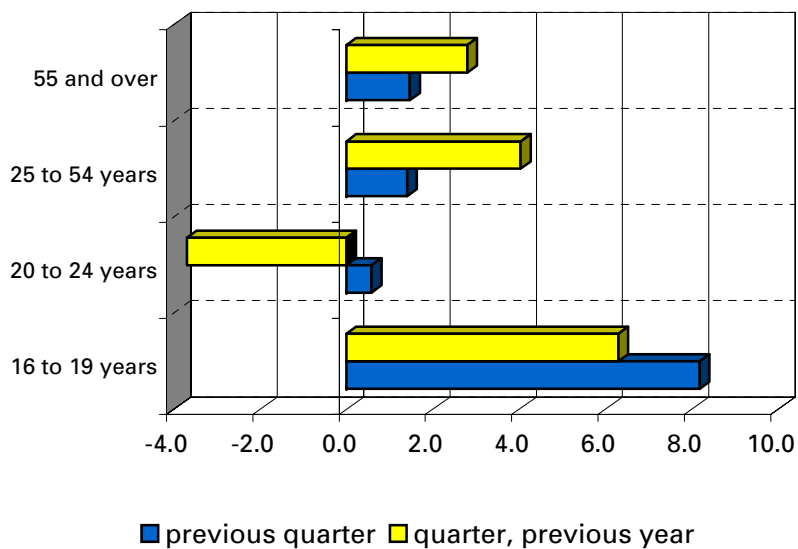


Unemployment



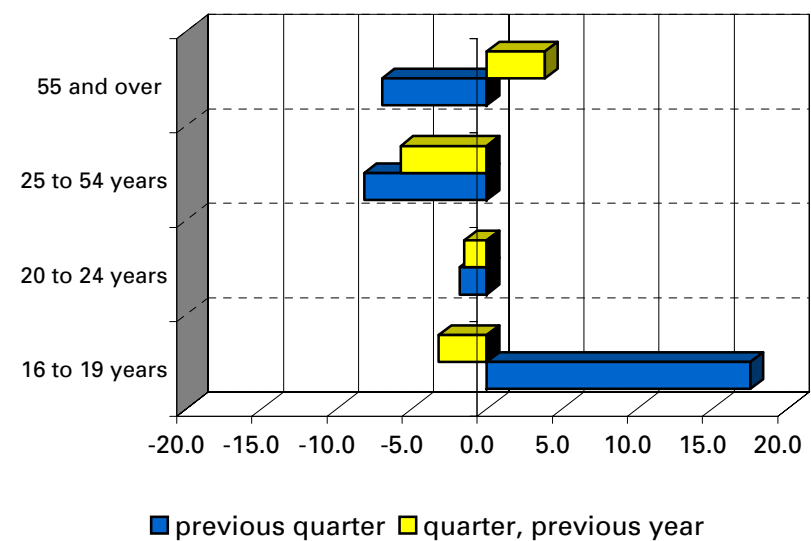
Job variation percentages over the previous quarter and on the same quarter the previous year

Employed



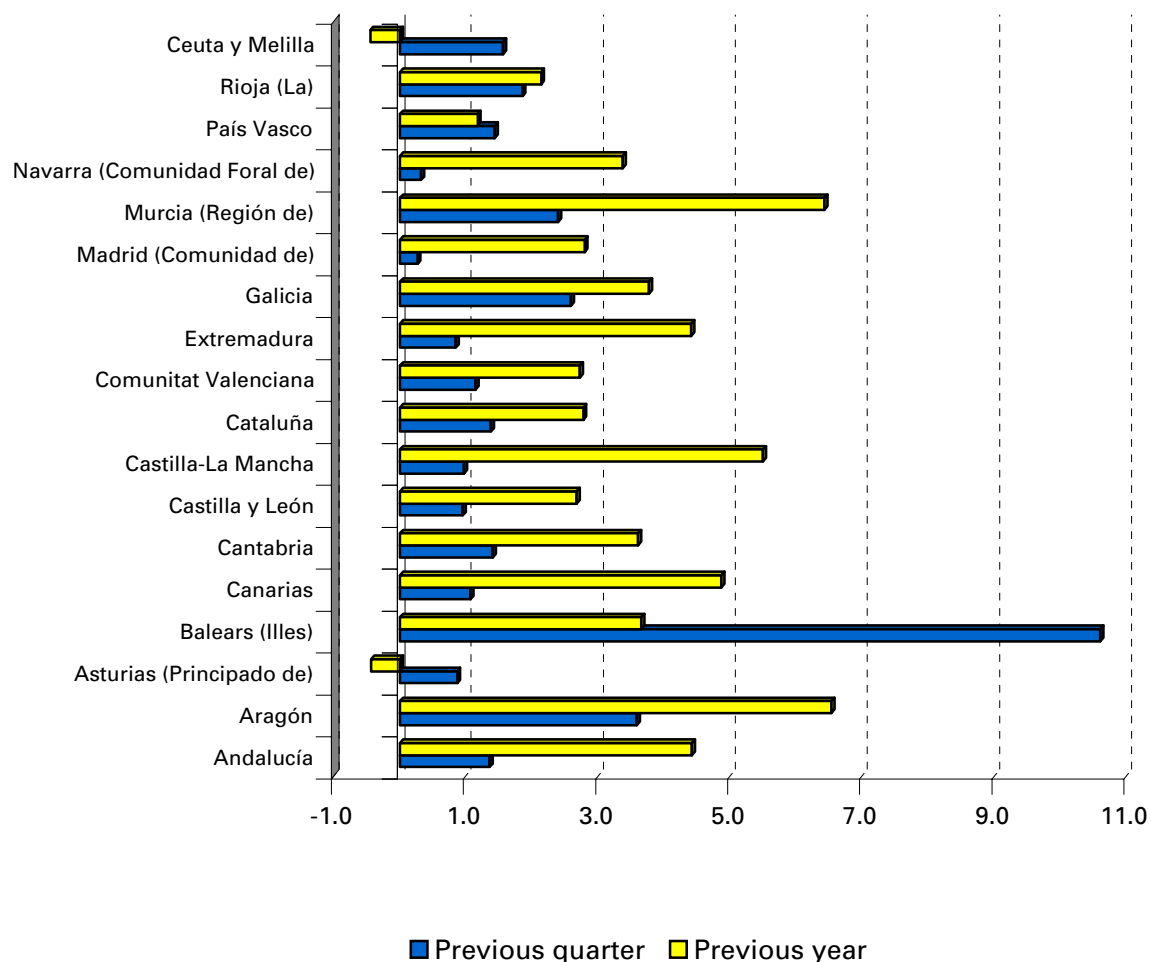
Job variation percentages over the previous quarter and on the same quarter the previous year

Unemployment



Employment variation percentages over the previous quarter and on the same quarter the previous year

Second Quarter 2007



Unemployment rate (Spain = 7.95)

