

Economically Active Population Survey (EAPS)

Third quarter of 2007

Main results

- The number of employed persons in Spain stands at 20,510,600 in the third quarter of 2007 (143,300 more than in the previous quarter). In the past year, 615,000 jobs have been created. The interannual employment growth rate stands at 3.09%.
- The activity rate is 59.10%, almost one quarter of a point higher than in the second quarter of 2007. For men, the rate is 69.61% (practically three tenths higher than the previous quarter) and for women, it is 48.98% (two tenths higher).
- The number of unemployed persons increases by 31,900 persons with respect to the previous quarter, and stands at 1,791,900 persons. The unemployment rate has increased eight hundredths to 8.03%. The number of unemployed persons has increased by 26,800 persons during the last 12 months.
- The total number of wage earners rises by 90,400 persons as compared with the previous quarter, and stands at 16,869,800. The number of employees has increased by 503,900 in the past year. Wage earners with a permanent contract increase by 45,700 persons this quarter, while temporary employees do so by 44,700. The temporary rate stands at 31.94% from the 31.85% registered the previous quarter.
- The Autonomous Communities with the greatest increases in employment this quarter are Madrid (35,200), Castilla – La Mancha (23,400) and Castilla y León (22,400). Canarias registers the greatest decrease in employment (13,500).
- The most pronounced drop in unemployment is recorded in Galicia (10,400 fewer unemployed persons). The greatest increases in the number of unemployed persons this quarter are observable in Cataluña (28,000 more), Andalucía (24,700) and Murcia (11,800).

The number of active persons in Spain stands at 22,302,500 persons.

The total number of active persons for the third quarter of 2007 was 22,302,500, with an increase of 175,200 persons on the figure from the previous quarter. The activity rate rose 24 hundredths to 59.10%.

The number of active women increased by 73,000 this quarter, and is estimated at 9,411,900 persons. The female activity rate increased two tenths and reached 48.98%. On the other hand, the number of active men stood at 12,890,600, with an increase of 102,200 persons. The male activity rate rose 28 hundredths this quarter and stood at 69.61%.

In the past twelve months, the number of active persons has increased by 641,800 persons, of whom 370,900 are women.

The activity rate for the foreign population (76.17%) increased 21 hundredths this quarter. It was more than 19 points higher than the rate for the Spanish population (56.95%), which increased almost two tenths. To a large extent, the age distribution of the foreign nationals explains this difference.

Employment grows by 143,300 persons this quarter, reaching 20,510,600

The number of employed persons stood at 20,510,600 persons, 143,300 more than in the second quarter. In the last twelve months, the number of employed persons has increased by 615,000.

The interannual employment growth rate was 3.09%, 33 hundredths less than the previous quarter (3.42%).

Employment grew more among men (81,900 more than the previous quarter) than among women (61,300 more). In terms of interannual evolution, there were 384,800 more women and 230,200 more men employed this quarter.

The number of employed Spaniards rose by 50,700 persons, while employed foreign nationals increased by 92,600 persons during the last three months. In the third quarter of 2007, 13.88% of the total number of employed persons were foreign nationals.

The greatest increases in employment took place in age groups under 25 and 50 to 54 years old (104,900 and 41,800 more employed persons, respectively). The employed population aged 25 to 29 years decreased by 24,200 persons this quarter.

The number of employed persons grew in services (by 160,100 persons) and industry (15,100 more) and, to a lesser extent, in construction (3,700). In contrast, the number dropped in agriculture (35,600 fewer employed persons), as compared with the second quarter of 2007.

Regarding the evolution during the last twelve months, the interannual growth rate in employment in services fell to 4.15% from the 4.34% registered the previous quarter. In construction, interannual growth of employment decreased to 4.92% from 7.62%. The negative interannual rate in agriculture was 3.04% this quarter, as compared to the likewise negative interannual evolution of 3.81% for the previous quarter. In industry, employment showed a negative rate of 0.89%, compared to the drop of 1.31% registered in the second quarter.

The number of wage earners increases by 90,400 persons, half of whom have a permanent contract

The total number of employees in the third quarter of 2007 was 16,869,800, with an increase of 90,400 persons with respect to the previous quarter. The number of wage earners with a permanent contract increased by 45,700, standing at 11,481,200 persons. Temporary employees increased by 44,700 persons, to a total of 5,388,600 persons.

The temporary rate rose almost one tenth, from 31.85% to 31.94%.

In the last twelve months, the total number of wage earners increased by 503,900 persons. Employees with a permanent contract increased by 776,700 persons, while wage earners with a temporary contract decreased by 272,800 persons.

The salary rate fell almost 13 hundredths, standing at 82.25%.

In terms of **working hours**, 2,276,800 employed part-time workers were registered during this quarter (1,823,700 women and 453,000 men). With respect to the previous quarter, the number of persons working part-time decreased by 163,400 persons, of whom 101,300 were women.

On the other hand, full-time employed persons increased by 306,600 as compared with the previous quarter. The number of women working full-time rose by 162,700 persons, and the number of men rose by 144,000.

The percentage of part-time employed persons was 11.1%, which indicates a drop of 0.88 points with respect to the percentage registered the second quarter (11.98%)

Unemployment grows by 31,900 persons, and the unemployment rate stands at 8.03%

Unemployment dropped by 31,900 persons in the third quarter of 2007. The total number of unemployed persons in Spain was 1,791,900, with an increase of 26,800 persons during the last twelve months.

The unemployment rate grew eight hundredths and it stands above 8%.

The growth in unemployment this quarter affected men (20,300) more than women (11,600). The unemployment rate for men was 6.21%, which was 11 hundredths more than in the second quarter of the year. The rate for women was 10.53%, that is, four hundredths more than the previous quarter.

Unemployment grew by 26,400 persons among Spaniards and 5,500 persons among foreign nationals. The unemployment rate for Spaniards was 7.4% (11 hundredths higher than the previous quarter) while the rate for foreign nationals was 11.78% (19 hundredths lower).

Regarding age, the growth in unemployment was concentrated among persons aged 20 to 24 and 25 to 54 years (with 13,200 and 13,600 more unemployed persons, respectively) this quarter.

By sector, unemployment grew in services (24,200 more unemployed persons), agriculture (17,100), industry (13,300) and construction (13,100). Unemployment decreased with respect to the second quarter of the year for the group of persons who lost their jobs over a year ago (34,700 fewer) and barely changed among those persons seeking their first job.

The unemployment rate for the reference person of the household rose 17 hundredths, standing at 6.02%. The rate for the spouse or partner increased 16 hundredths to 7.24%, and the rate for sons or daughters grew 34 hundredths to 12.86%

The number of households in which all active members are employed increases by 44,700

The number of households in which all members were working stood at 10,697,600, indicating 44,700 households more than the second quarter, and 302,700 more than the same period the year before.

The number of households in which all active members were unemployed barely changed with respect to the previous quarter and decreased by 14,000 in the last 12 months.

Mobility as related to activity

Regarding quarter-on-quarter mobility as related to activity, the proportion of unemployed persons who had been employed three months prior was 30.12%, which indicates a growth of 2.7 points on the figure registered the second quarter of the year.

The percentage of employed persons who had also been employed the previous quarter stood at 93.06%, two tenths less than three months ago.

The percentage of employed persons who had been unemployed during the previous quarter was 2.89%, that is, 36 hundredths less than the figure recorded in the previous quarter. The percentage of employed persons who had been inactive was 4.05% (almost half a point higher than the second quarter of 2007).

The probability of remaining unemployed was 37.24% (five points lower than in the second quarter of 2007) and for remaining inactive, the rate was 91.73%, almost one point lower than the probability from three months ago.

Results by Autonomous Community and Province

The greatest increases in the number of **active persons** this quarter were recorded in Cataluña (44,600 more active persons), Madrid (29,000), Castilla y León (20,900), Comunitat Valenciana (18,900), Andalucía (17,500) and Castilla-La Mancha (16,800). The only significant drop in the number of active persons was in País Vasco (5,600 fewer).

In terms of **employment**, the Autonomous Communities with the most significant growth as compared with the previous quarter, in absolute values, were Madrid (35,200 more employed persons), Castilla-La Mancha (23,400), Castilla y León (22,400), Galicia (18,800), Comunitat Valenciana (17,100) and Cataluña (16,600). Employment fell this quarter as compared with the previous quarter, in Canarias (13,500 fewer employed persons), Andalucía (7,200), Murcia (6,500) and País Vasco (5,400).

Regarding the interannual variation, the most noteworthy increases in employment were recorded in the Autonomous Communities of Andalucía (112,000), Madrid (100,200), Cataluña (82,100) and Comunitat Valenciana (77,300).

As for the evolution of **unemployment**, the greatest drops this quarter took place in Galicia (10,400) and Asturias (8,500). Conversely, the most pronounced rises were in Cataluña (28,000 more), Andalucía (24,700) and Murcia (11,800).

In the last twelve months, Castilla-La Mancha (with 12,900 fewer unemployed persons), Asturias (11,600) and Canarias (10,100) were the Autonomous Communities in which the number of unemployed persons decreased the most. In Cataluña, Comunitat Valenciana and Andalucía, unemployment has risen by 26,300, 18,700 and 18,100 persons, respectively, over the last twelve months.

Navarra (4.38%), Illes Balears (4.45%), Aragón (4.86%), La Rioja (5.30%), Cantabria (5.57%), Madrid (6%) and País Vasco (6.05%) were the Autonomous Communities with the lowest **unemployment rates** in the third quarter of 2007.

The highest unemployment rates were registered in Andalucía (12.57%), Extremadura (12.37%), and Canarias (10.74%).

Illes Balears (5.55%), Navarra and Aragón (both with 6.31%) and Cantabria (6.43%), recorded the lowest female unemployment rates.

Cantabria, Illes Balears, Galicia, Aragón and Cataluña offered the least diverging rates by sex, with a difference of less than 2.5 points. On the other hand, Extremadura and Andalucía (with 9.3 and 7.9 points of difference, respectively) offered the most diverging rates by sex.

By province, Jaén (14.55%), Huelva (14.22%), Cádiz (13.79%), Badajoz (13.74) and Córdoba (13%) registered the highest unemployment rates this quarter.

The Autonomous Communities with the highest **activity rates** in the third quarter of 2007 were Illes Balears (65.75%), Madrid (63.97%), Cataluña (62.77%), Canarias (60.78%), Murcia (60.64%), Navarra (60.48%) and Comunitat Valenciana (60.21%).

The lowest activity rates were recorded in Asturias (50.82%), Extremadura (53.06%), Castilla y León (54.32%) and Galicia (54.69%).

By province, in addition to Illes Balears, Madrid, Navarra and Murcia, activity rates above 60% were registered in Girona (66.39%), Tarragona (63.76%), Las Palmas (63.04%), Almería (62.87%), Barcelona (62.48%), Castellón (61.88%), Valladolid (61.43%). Valencia (61.38%), Zaragoza (60.95%) and Toledo (60.27%).

For further information see **INEbase-www.ine.es** All press releases at: **www.ine.es/prensa/prensa.htm**

Press office: Telephone numbers: 91 583 93 63 / 94 08 – Fax: 91 583 90 87 - gprensa@ine.es
Information area: Telephone: 91 583 91 00 – Fax: 91 583 91 58 – www.ine.es/infoine

Methodological note

General characteristics

The Economically Active Population Survey is a continuous, sample-based study, aimed at family dwellings, and which has been conducted since 1964.

3,588 census sections are chosen for this Survey, among the more than 30,000 into which Spain is divided. On average, 18 households are surveyed in each of them, except in Barcelona, Madrid, Sevilla, Valencia and Zaragoza, where the number of interviews is 22. Thus, the sample size is approximately 65,000 dwellings, providing information on some 180,000 persons. This data is collected through personal and telephone interviews, conducted by National Statistics Institute employees, attached to the provincial offices thereof. The information is carefully filtered and processed using computer means. Results are obtained within the month after the end of the reference quarter for the data.

Main definitions

Active persons: persons aged 16 or over who, during the reference week (the week prior to that when the interview is held), supplied labour for the production of economic goods and services or were available to do so, and carried out actions to incorporate themselves into said production. They are divided into employed and unemployed persons.

Employed persons: persons aged 16 or over who, during the reference week, worked for at least one hour, in exchange for payment (salary, wage, business profit, etc.) in cash or in kind. Persons who, having a job, have been temporarily absent from it due to illnesses, vacations, etc. are also employed persons.

Employed persons are classified, according to their professional status, into non-wage earners (employers, self-employed workers without employees and independent workers, cooperative members, family assistance) and employees (public or private).

According to the length of the working day, employed persons are classified as full-time and part-time workers. The usual working week cannot be shorter than 30 hours in the first case, nor exceed 35 hours in the second.

Wage earners are classified into permanent and temporary. For the latter, the end of their contract or working relationship is set by means of objective conditions, such as the expiry of a certain period of time, the completion of a specific task, etc.

A significant category within employment is that of **time-related underemployment**, defined at the 16th International Labour Statisticians Conference (Geneva, 1998). The EAPS considers persons in time-related underemployment as employed persons who would like to work more hours, who are available to work more hours and whose effective working hours in the reference week are fewer than the number of hours usually worked by employed persons working full-time in the same branch of activity as that in which the underemployed person develops his/her main job.

Unemployed persons: Individuals, aged 16 or over who, during the reference week, were jobless, available for work, and actively looking for a job. Persons who have already found a job and are waiting to start work, are also considered as unemployed, provided that they meet the first two conditions.

According to European Commission Regulation 1897/2000, the following are considered as active seeking methods in the four weeks prior to the interview:

- Having been in contact with a public employment office to find work, whoever took the initiative (the renewal of registration due to purely administrative reasons is not an active step).
- Having been in contact with a private office (temporary work agency, firm specialising in recruitment, ...) for the purpose of finding work.
- Applying to employers directly.
- Having searched via personal relations, trade unions, etc.
- Placing or answering job advertisements.
- Studying job advertisements.
- Taking a recruitment test or examination or being interviewed.
- Having looked for land, premises or equipment.
- Applying for permits, licences or financial resources.

Inactive persons: Individuals aged 16 or over not included in any of the above categories.

National results

(Continuation)

	Current quarter	Variation on previous quarter		Variation on same quarter, previous year	
		Difference	Percentage	Difference	Percentage
3. Foreign population aged 16 years and over by labour status					
FOREIGN POPULATION AGED 16 YEARS AND OVER	4,235.5	117.3	2.85	570.2	15.56
Active population	3,226.4	98.1	3.13	402.1	14.24
- Employed	2,846.4	92.6	3.36	328.4	13.04
- Unemployed	380.0	5.5	1.46	73.7	24.06
Inactive	1,009.1	19.3	1.95	168.1	19.99
Activity rate	76.17	0.21	-	-0.88	-
Unemployment rate	11.78	-0.19	-	0.93	-

4. Employed by sex, age group and economic sector

BOTH SEXES	20,510.6	143.3	0.70	615.0	3.09
16 to 19 years	444.1	47.9	12.09	-6.0	-1.34
20 to 24 years	1,649.4	57.0	3.58	-27.2	-1.62
25 to 29 years	2,859.2	-24.2	-0.84	3.3	0.12
30 to 34 years	3,208.2	19.8	0.62	149.3	4.88
35 to 39 years	2,962.1	-2.1	-0.07	92.6	3.23
40 to 44 years	2,765.9	-8.7	-0.31	110.7	4.17
45 to 49 years	2,418.5	-0.2	-0.01	80.1	3.43
50 to 54 years	1,926.3	41.8	2.22	131.0	7.30
55 and over	2,276.8	11.9	0.52	81.3	3.70
MALES	12,089.6	81.9	0.68	230.2	1.94
16 to 19 years	275.6	17.6	6.82	-14.6	-5.03
20 to 24 years	923.0	21.6	2.39	-21.7	-2.29
25 to 29 years	1,587.3	-12.5	-0.78	-3.5	-0.22
30 to 34 years	1,847.2	17.0	0.93	71.4	4.02
35 to 39 years	1,758.6	10.5	0.60	55.5	3.26
40 to 44 years	1,615.7	2.6	0.16	58.8	3.78
45 to 49 years	1,414.6	-3.8	-0.27	17.2	1.23
50 to 54 years	1,164.6	6.2	0.54	43.6	3.89
55 and over	1,502.9	22.7	1.53	23.4	1.58
FEMALES	8,421.0	61.3	0.73	384.8	4.79
16 to 19 years	168.5	30.3	21.94	8.6	5.36
20 to 24 years	726.4	35.5	5.13	-5.5	-0.76
25 to 29 years	1,271.9	-11.7	-0.92	6.8	0.54
30 to 34 years	1,361.0	2.8	0.21	77.9	6.07
35 to 39 years	1,203.5	-12.6	-1.04	37.1	3.18
40 to 44 years	1,150.2	-11.3	-0.97	51.9	4.73
45 to 49 years	1,003.9	3.6	0.36	62.8	6.68
50 to 54 years	761.8	35.6	4.90	87.4	12.95
55 and over	773.8	-10.8	-1.38	57.8	8.07
TOTAL EMPLOYED	20,510.6	143.3	0.70	615.0	3.09
Agriculture	885.3	-35.6	-3.87	-27.7	-3.04
Industry	3,258.9	15.1	0.47	-29.2	-0.89
Construction	2,717.5	3.7	0.14	127.4	4.92
Services	13,648.8	160.1	1.19	544.5	4.15

National results

(Continuation)

	Current quarter	Variation on previous quarter		Variation on same quarter, previous year	
		Difference	Percentage	Difference	Percentage

5. Employed by professional status, type of contract and working hours

TOTAL EMPLOYED	20,510.6	143.3	0.70	615.0	3.09
Self-employed workers	3,633.1	54.4	1.52	116.2	3.30
- Employers	1,141.7	32.0	2.89	47.3	4.32
- Independent workers	2,213.1	51.7	2.39	144.3	6.98
- Cooperatives members	73.2	-11.7	-13.76	-25.4	-25.76
- Family workers	205.2	-17.6	-7.92	-50.1	-19.63
Employees	16,869.8	90.4	0.54	503.9	3.08
- With a permanent job	11,481.2	45.7	0.40	776.7	7.26
- With a temporary job	5,388.6	44.7	0.84	-272.8	-4.82
Others	7.7	-1.6	-16.71	-5.1	-39.88
FULL-TIME EMPLOYED	18,233.8	306.6	1.71	591.4	3.35
Males	11,636.6	144.0	1.25	271.3	2.39
Females	6,597.2	162.7	2.53	320.2	5.10
PART-TIME EMPLOYED	2,276.8	-163.4	-6.69	23.5	1.04
Males	453.0	-62.0	-12.04	-41.0	-8.31
Females	1,823.7	-101.3	-5.26	64.6	3.67

6. Unemployed by sex, age group, and economic sector

BOTH SEXES	1,791.9	31.9	1.81	26.8	1.52
16 to 19 years	165.4	2.6	1.57	16.5	11.08
20 to 24 years	292.6	13.2	4.74	8.3	2.94
25 to 54 years	1,202.2	13.6	1.15	-9.0	-0.74
55 and over	131.7	2.5	1.92	11.0	9.09
MALES	800.9	20.3	2.60	40.7	5.35
16 to 19 years	81.1	-1.7	-2.02	9.4	13.05
20 to 24 years	134.4	9.3	7.43	6.3	4.96
25 to 54 years	514.2	12.4	2.48	18.5	3.73
55 and over	71.3	0.2	0.28	6.4	9.93
FEMALES	991.0	11.6	1.19	-13.8	-1.38
16 to 19 years	84.3	4.2	5.27	7.1	9.24
20 to 24 years	158.3	3.9	2.55	2.0	1.28
25 to 54 years	688.0	1.2	0.17	-27.5	-3.84
55 and over	60.4	2.3	3.92	4.5	8.11
TOTAL UNEMPLOYED	1,791.9	31.9	1.81	26.8	1.52
Agriculture	105.1	17.1	19.44	14.8	16.38
Industry	135.4	13.3	10.89	-3.2	-2.31
Construction	177.2	13.1	8.01	26.0	17.20
Services	702.3	24.2	3.58	49.0	7.50
Lost their job more than 1 year ago	461.8	-34.7	-6.99	-59.2	-11.36
First job seekers	210.1	-1.2	-0.56	-0.6	-0.29

National results

(Conclusion)

	Current quarter	Variation on previous quarter		Variation on same quarter, previous year	
		Difference	Percentage	Difference	Percentage

7. Unemployment rate by relationship with the reference person

TOTAL	8.03	0.08	-	-0.11	-
Reference person	6.02	0.17	-	0.15	-
Spouse or partner	7.24	0.16	-	-0.23	-
Child	12.86	0.34	-	-0.12	-
Other relatives	8.74	-2.61	-	-2.60	-
Unrelated persons	8.42	-1.37	-	3.62	-

8. Household data

TOTAL HOUSEHOLDS	16,328.7	98.1	0.60	352.8	2.21
Households with at least one active member	12,290.1	59.1	0.48	290.5	2.42
- All member employed	10,697.6	44.7	0.42	302.7	2.91
- All member unemployed	379.3	-0.3	-0.09	-14.0	-3.56
Households without any active population	4,038.6	39.0	0.97	62.3	1.57

Mobility according to activity in current and previous quarter

Classification in previous quarter	Classification in current quarter			
	Total	Employed	Unemployed	Inactive
BOTH SEXES				
Total	100.00	100.00	100.00	100.00
Employed	53.99	93.06	30.12	5.21
Unemployed	4.50	2.89	37.24	3.06
Inactive	41.51	4.05	32.64	91.73
MALES				
Total	100.00	100.00	100.00	100.00
Employed	65.16	94.72	36.18	5.86
Unemployed	4.01	2.35	39.81	2.82
Inactive	30.83	2.93	24.01	91.31
FEMALES				
Total	100.00	100.00	100.00	100.00
Employed	43.37	90.70	25.38	4.84
Unemployed	4.98	3.67	35.23	3.19
Inactive	51.65	5.63	39.39	91.97

Grossing up factors of current quarter (forward analysis)

Results by Autonomous Communities

(Continues)

	Current quarter	Variation on previous quarter		Variation on same quarter, previous year	
		Difference	Percentage	Difference	Percentage
1. Population aged 16 years and over					
TOTAL	37,733.9	141.9	0.38	669.1	1.81
Andalucía	6,575.5	25.8	0.39	124.2	1.93
Aragón	1,097.7	3.7	0.34	16.6	1.54
Asturias (Principado de)	937.0	-0.1	-0.01	0.2	0.02
Balears (Illes)	854.9	5.3	0.62	25.5	3.08
Canarias	1,679.1	8.8	0.53	41.7	2.55
Cantabria	489.1	1.0	0.21	5.4	1.12
Castilla y León	2,155.4	2.6	0.12	11.5	0.53
Castilla-La Mancha	1,633.4	9.7	0.60	39.5	2.48
Cataluña	6,023.3	22.9	0.38	125.4	2.13
Comunitat Valenciana	4,059.5	24.1	0.60	110.2	2.79
Extremadura	898.7	1.5	0.17	6.1	0.68
Galicia	2,381.9	2.2	0.09	8.8	0.37
Madrid (Comunidad de)	5,108.2	21.7	0.43	98.4	1.96
Murcia (Región de)	1,136.7	7.9	0.70	34.3	3.12
Navarra (Comunidad Foral de)	501.1	1.7	0.34	6.9	1.39
País Vasco	1,831.5	1.6	0.09	7.8	0.43
Rioja (La)	262.8	0.9	0.34	4.8	1.84
Ceuta	56.3	0.1	0.19	0.3	0.62
Melilla	51.7	0.5	0.94	1.4	2.87

2. Active population

TOTAL	22,302.5	175.2	0.79	641.8	2.96
Andalucía	3,692.6	17.5	0.48	130.1	3.65
Aragón	652.6	4.8	0.74	37.3	6.06
Asturias (Principado de)	476.2	4.7	1.00	5.7	1.22
Balears (Illes)	562.1	6.3	1.14	6.7	1.21
Canarias	1,020.6	-4.1	-0.40	13.5	1.34
Cantabria	276.7	3.1	1.12	7.3	2.71
Castilla y León	1,170.9	20.9	1.82	21.1	1.83
Castilla-La Mancha	922.9	16.8	1.86	40.4	4.58
Cataluña	3,781.0	44.6	1.19	108.4	2.95
Comunitat Valenciana	2,444.2	18.9	0.78	96.0	4.09
Extremadura	476.8	7.1	1.52	20.3	4.45
Galicia	1,302.6	8.4	0.65	18.0	1.40
Madrid (Comunidad de)	3,268.0	29.0	0.89	103.8	3.28
Murcia (Región de)	689.4	5.4	0.79	43.7	6.77
Navarra (Comunidad Foral de)	303.0	-3.0	-0.98	-0.8	-0.27
País Vasco	1,052.7	-5.6	-0.53	-10.5	-0.99
Rioja (La)	152.5	-1.5	-0.99	-0.5	-0.30
Ceuta	29.0	0.7	2.59	-0.5	-1.85
Melilla	28.7	1.1	3.98	1.8	6.82

* Data below 5000 are subject to strong variations, due to sampling error

Results by Autonomous Communities

(Conclusion)

	Current quarter	Variation on previous quarter		Variation on same quarter, previous year	
		Difference	Percentage	Difference	Percentage
3. Employed					
TOTAL	20,510.6	143.3	0.70	615.0	3.09
Andalucía	3,228.4	-7.2	-0.22	112.0	3.59
Aragón	620.9	7.4	1.21	37.3	6.39
Asturias (Principado de)	442.0	13.2	3.09	17.4	4.10
Balears (Illes)	537.0	11.9	2.27	8.2	1.55
Canarias	911.0	-13.5	-1.46	23.5	2.65
Cantabria	261.3	5.0	1.96	9.1	3.61
Castilla y León	1,088.6	22.4	2.10	25.1	2.36
Castilla-La Mancha	858.5	23.4	2.80	53.3	6.63
Cataluña	3,525.3	16.6	0.47	82.1	2.38
Comunitat Valenciana	2,230.8	17.1	0.77	77.3	3.59
Extremadura	417.9	5.2	1.27	13.2	3.25
Galicia	1,215.1	18.8	1.58	23.9	2.01
Madrid (Comunidad de)	3,071.7	35.2	1.16	100.2	3.37
Murcia (Región de)	632.6	-6.5	-1.01	37.8	6.35
Navarra (Comunidad Foral de)	289.8	-0.2	-0.06	0.5	0.16
País Vasco	989.0	-5.4	-0.55	-5.0	-0.51
Rioja (La)	144.4	-2.0	-1.36	0.3	0.19
Ceuta	23.0	0.1	0.33	-1.1	-4.50
Melilla	23.5	1.7	7.58	-0.1	-0.39

4. Unemployed

TOTAL	1,791.9	31.9	1.81	26.8	1.52
Andalucía	464.2	24.7	5.62	18.1	4.05
Aragón	31.7	-2.6	-7.60	0.0	-0.05
Asturias (Principado de)	34.3	-8.5	-19.94	-11.6	-25.38
Balears (Illes)	25.0	-5.6	-18.21	-1.4	-5.45
Canarias	109.6	9.4	9.40	-10.1	-8.40
Cantabria	15.4	-1.9	-11.21	-1.8	-10.38
Castilla y León	82.3	-1.5	-1.74	-4.0	-4.61
Castilla-La Mancha	64.5	-6.6	-9.28	-12.9	-16.71
Cataluña	255.7	28.0	12.30	26.3	11.48
Comunitat Valenciana	213.4	1.8	0.86	18.7	9.58
Extremadura	59.0	1.9	3.33	7.1	13.76
Galicia	87.5	-10.4	-10.64	-5.9	-6.36
Madrid (Comunidad de)	196.2	-6.2	-3.06	3.6	1.85
Murcia (Región de)	56.8	11.8	26.34	5.9	11.57
Navarra (Comunidad Foral de)	13.3	-2.8	-17.58	-1.3	-8.80
País Vasco	63.7	-0.2	-0.33	-5.5	-7.89
Rioja (La)	8.1	0.5	6.05	-0.7	-8.36
Ceuta	6.1	0.7	12.21	0.5	9.70
Melilla	5.3	-0.6	-9.52	1.9	(:)

* Data below 5,000 are subject to strong variations, due to sampling error

(:) The variation percentages calculated from low figures with high sampling errors are not significant

Results by Autonomous Communities and Provinces

(Absolute figures in thousands and rates in percentage)

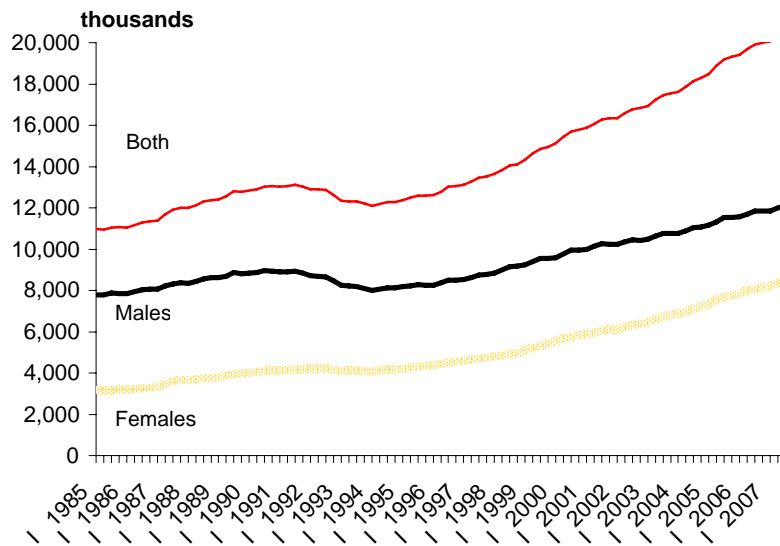
	Both sexes				Males				Females			
	Employed	Unemployed	Activity rate	Unem. rate	Employed	Unemployed	Activity rate	Unem. Rate	Employed	Unemployed	Activity rate	Unem. Rate
TOTAL	20,510.6	1,791.9	59.10	8.03	12,089.6	800.9	69.61	6.21	8,421.0	991.0	48.98	10.53
Andalucía	3,228.4	464.2	56.16	12.57	2,015.6	210.3	68.80	9.45	1,212.8	253.9	43.91	17.31
Almería	297.5	41.3	62.87	12.18	192.8	17.5	75.45	8.34	104.7	23.7	49.39	18.48
Cádiz	463.4	74.1	55.15	13.79	293.0	32.4	67.64	9.95	170.4	41.8	42.98	19.69
Córdoba	301.8	45.1	53.97	13.00	194.0	20.0	67.91	9.33	107.8	25.1	40.57	18.91
Granada	342.6	45.4	52.93	11.71	207.2	23.5	64.93	10.19	135.4	21.9	41.65	13.93
Huelva	193.7	32.1	55.55	14.22	118.6	16.5	66.55	12.22	75.1	15.6	44.57	17.20
Jaén	233.7	39.8	51.09	14.55	159.0	16.9	66.64	9.61	74.8	22.9	35.97	23.44
Málaga	644.7	75.3	57.50	10.46	389.7	35.0	69.82	8.24	255.0	40.3	45.87	13.64
Sevilla	751.1	111.1	57.77	12.89	461.4	48.6	69.84	9.52	289.6	62.5	46.20	17.76
Aragón	620.9	31.7	59.45	4.86	360.8	14.2	68.78	3.79	260.1	17.5	50.25	6.31
Huesca	101.6	3.2	56.01	3.10	61.5	1.3	66.91	2.10	40.1	1.9	45.05	4.58
Teruel	64.4	3.4	55.11	5.00	39.0	1.5	64.62	3.79	25.4	1.9	45.20	6.81
Zaragoza	454.9	25.1	60.95	5.23	260.3	11.4	69.90	4.18	194.6	13.7	52.23	6.59
Asturias	442.0	34.3	50.82	7.19	251.8	15.8	60.13	5.89	190.2	18.5	42.41	8.87
Balears (Illes)	537.0	25.0	65.75	4.45	308.7	11.6	75.13	3.62	228.4	13.4	56.42	5.55
Canarias	911.0	109.6	60.78	10.74	533.9	52.0	70.06	8.88	377.1	57.6	51.57	13.25
Palmas (Las)	480.4	60.8	63.04	11.23	281.6	29.3	71.56	9.42	198.7	31.4	54.31	13.66
S.C.Tenerife	430.6	48.8	58.42	10.18	252.2	22.7	68.44	8.26	178.4	26.1	48.81	12.77
Cantabria	261.3	15.4	56.57	5.57	151.7	7.9	67.11	4.94	109.6	7.5	46.60	6.43
Castilla y León	1,088.6	82.3	54.32	7.03	657.0	35.3	65.13	5.10	431.6	47.0	43.80	9.82
Ávila	72.8	5.7	54.44	7.23	46.7	2.8	66.76	5.65	26.1	2.9	41.39	9.94
Burgos	167.7	12.3	58.01	6.83	104.3	7.3	69.61	6.50	63.4	5.0	45.61	7.37
León	198.0	17.0	50.64	7.90	116.3	5.4	59.44	4.44	81.7	11.6	42.44	12.42
Palencia	71.5	4.6	51.70	6.09	43.0	2.1	62.80	4.58	28.5	2.6	41.15	8.28
Salamanca	136.1	11.9	49.47	8.06	80.3	4.6	60.62	5.46	55.8	7.3	39.66	11.55
Segovia	70.1	3.9	54.89	5.25	41.5	1.8	64.83	4.08	28.6	2.1	45.14	6.89
Soria	43.7	2.3	58.25	5.10	27.0	0.9	68.79	3.17	16.7	1.5	47.16	8.06
Valladolid	254.4	18.8	61.43	6.87	149.3	8.2	72.66	5.20	105.1	10.6	50.74	9.14
Zamora	74.3	5.8	46.71	7.21	48.5	2.3	57.95	4.53	25.8	3.5	34.96	11.85
Castilla-La Mancha	858.5	64.5	56.50	6.98	542.4	27.4	69.57	4.81	316.1	37.0	43.35	10.49
Albacete	177.2	14.9	59.12	7.74	106.9	6.3	70.58	5.58	70.3	8.6	47.94	10.84
Ciudad Real	206.1	20.1	53.32	8.89	131.9	8.9	68.25	6.29	74.1	11.2	39.19	13.17
Cuenca	81.9	5.6	48.74	6.37	53.3	2.0	61.11	3.64	28.7	3.6	36.18	11.06
Guadalajara	100.4	3.4	56.13	3.29	62.6	1.9	66.25	2.99	37.8	1.5	44.88	3.78
Toledo	292.8	20.5	60.27	6.54	187.6	8.3	74.12	4.24	105.1	12.2	45.93	10.38
Cataluña	3,525.3	255.7	62.77	6.76	2,035.7	122.7	72.76	5.68	1,489.6	133.0	53.08	8.20
Barcelona	2,582.7	199.0	62.48	7.15	1,480.2	93.1	72.32	5.92	1,102.5	105.9	53.08	8.76
Girona	362.0	26.4	66.39	6.79	209.2	13.7	76.11	6.17	152.8	12.6	56.64	7.62
Lleida	200.6	6.3	58.69	3.06	118.9	3.1	68.60	2.52	81.7	3.3	48.61	3.83
Tarragona	380.0	24.0	63.76	5.94	227.5	12.7	74.98	5.30	152.6	11.3	52.29	6.89
Comunitat Valenciana	2,230.8	213.4	60.21	8.73	1,322.0	93.2	70.41	6.59	908.7	120.2	50.20	11.68
Alicante	800.0	82.9	58.09	9.38	469.1	36.9	67.90	7.29	330.9	46.0	48.65	12.20
Castellón	275.8	18.5	61.88	6.28	165.9	6.4	72.15	3.73	109.9	12.0	51.52	9.88
Valencia	1,154.9	112.1	61.38	8.85	687.0	49.9	71.83	6.78	467.9	62.2	51.06	11.73
Extremadura	417.9	59.0	53.06	12.37	260.7	24.7	64.29	8.64	157.2	34.3	42.10	17.91
Badajoz	261.6	41.7	54.63	13.74	162.9	17.8	65.51	9.85	98.6	23.9	43.88	19.49
Cáceres	156.3	17.3	50.53	9.96	97.7	6.9	62.29	6.56	58.6	10.4	39.28	15.12
Galicia	1,215.1	87.5	54.69	6.72	679.5	41.5	63.40	5.76	535.6	46.0	46.73	7.91
Coruña (A)	506.0	36.9	55.55	6.80	281.8	16.0	64.67	5.36	224.3	21.0	47.42	8.56
Lugo	141.3	7.1	47.88	4.77	79.3	3.7	54.69	4.51	61.9	3.3	41.33	5.10
Ourense	139.1	8.2	50.44	5.58	79.5	4.3	59.55	5.10	59.6	3.9	41.98	6.22
Pontevedra	428.7	35.3	57.82	7.61	238.9	17.6	66.73	6.85	189.8	17.7	49.63	8.55
Madrid (Comunid.de)	3,071.7	196.2	63.97	6.00	1,722.3	73.8	73.13	4.11	1,349.4	122.4	55.50	8.32
Murcia (Región de)	632.6	56.8	60.64	8.24	388.9	28.8	72.81	6.90	243.7	28.0	48.25	10.30
Navarra (C. Foral de)	289.8	13.3	60.48	4.38	171.0	5.3	70.84	2.99	118.8	8.0	50.25	6.31
País Vasco	989.0	63.7	57.48	6.05	567.5	27.8	66.90	4.66	421.5	35.9	48.57	7.85
Álava	149.0	7.3	59.83	4.68	87.4	2.9	70.08	3.22	61.6	4.4	49.85	6.67
Guipúzcoa	336.1	14.4	59.83	4.12	192.4	5.9	69.03	2.96	143.7	8.6	50.98	5.63
Vizcaya	504.0	41.9	55.45	7.68	287.7	19.0	64.74	6.19	216.3	22.9	46.83	9.58
Rioja (La)	144.4	8.1	58.03	5.30	88.6	3.6	69.76	3.93	55.9	4.5	46.16	7.38
Ceuta	23.0	6.1	51.50	20.87	15.9	3.0	67.85	15.90	7.1	3.1	35.51	30.16
Melilla	23.5	5.3	55.59	18.29	15.8	2.0	70.94	11.41	7.7	3.2	41.04	29.57

* Data below 5,000 are subject to strong variations, due to sampling errors

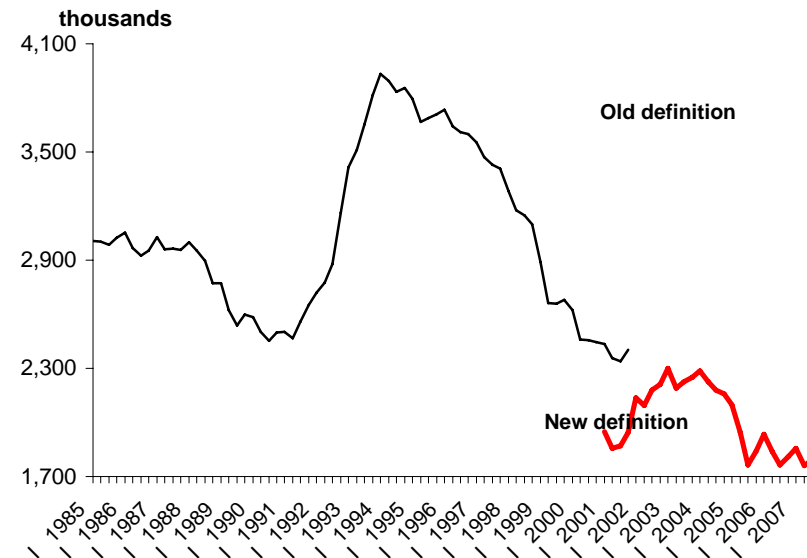
Employed and unemployed by sex

APS Third Quarter 2007

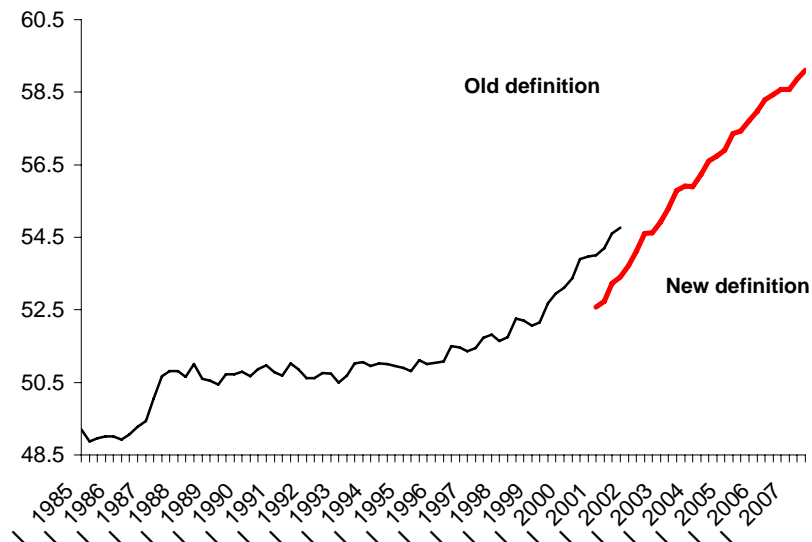
Employment



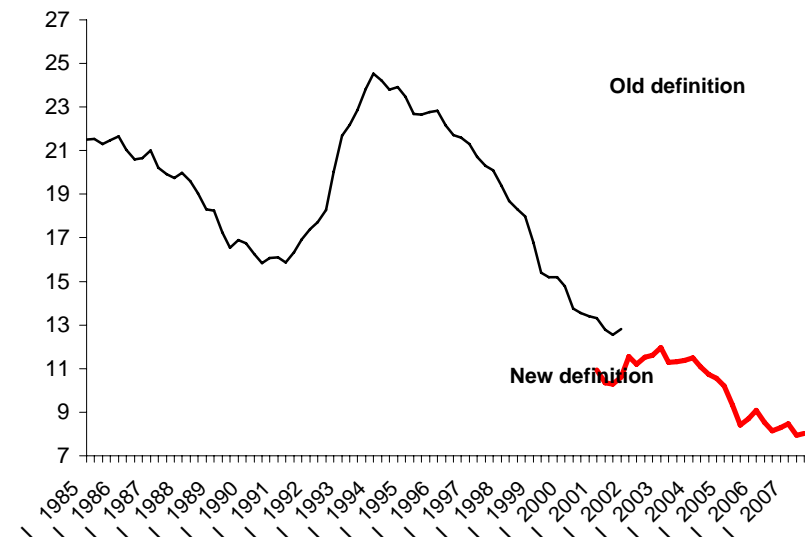
Unemployment



Activity rate



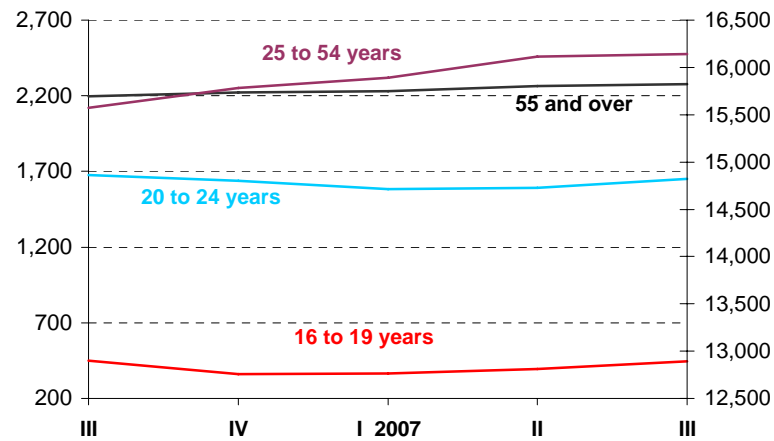
Unemployment rate



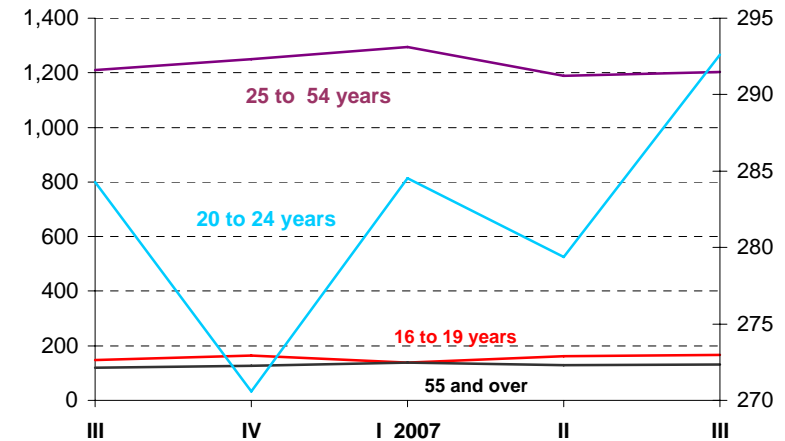
Employed and Unemployed by age

APS Third Quarter 2007

Employment

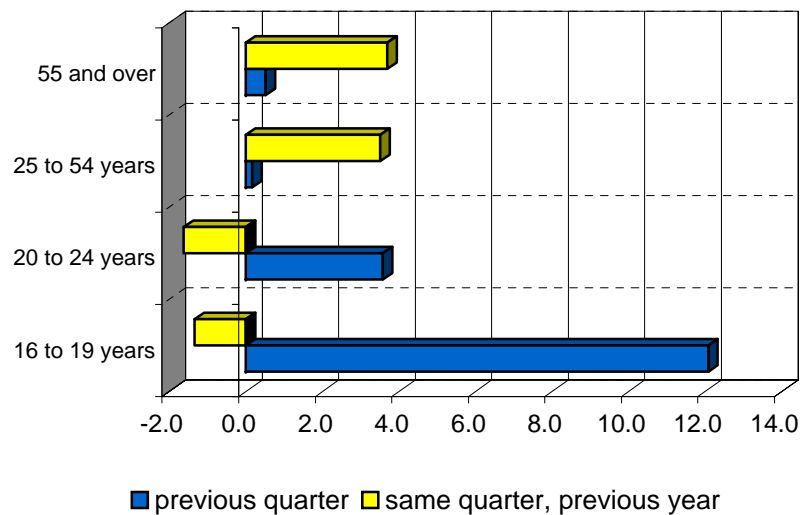


Unemployment

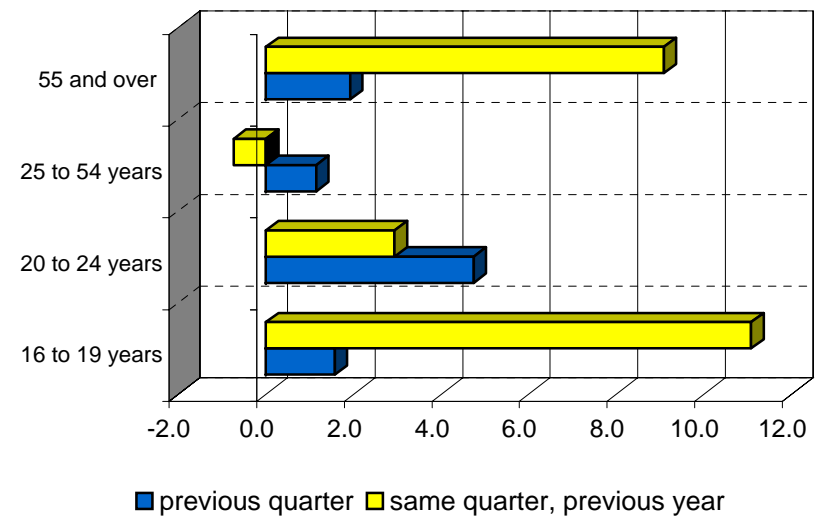


Variation percentages over the previous quarter and over the same quarter of the previous year

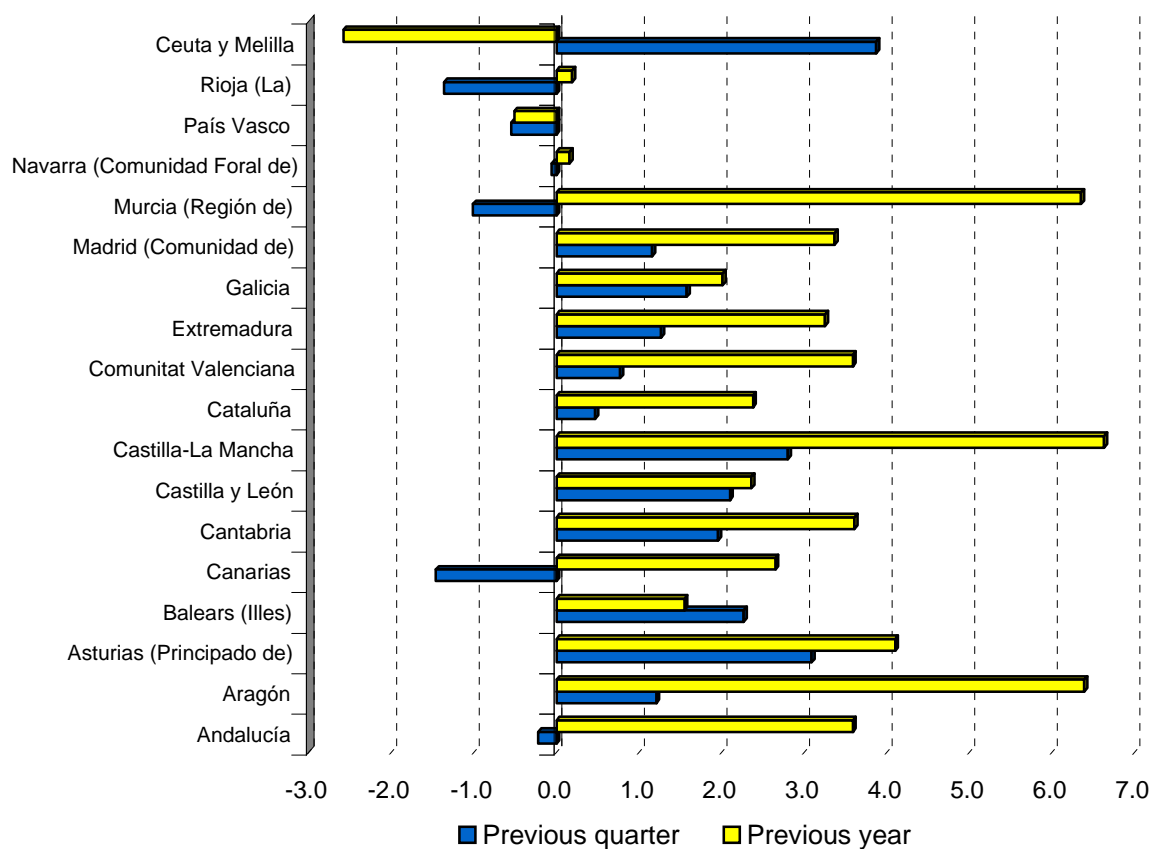
Employment



Unemployment



Third Quarter 2007



Unemployment rate
(Spain = 8.03)

