

**24 October 2019**

## **Economically Active Population Survey (EAPS) Third quarter of 2019**

### **Main results**

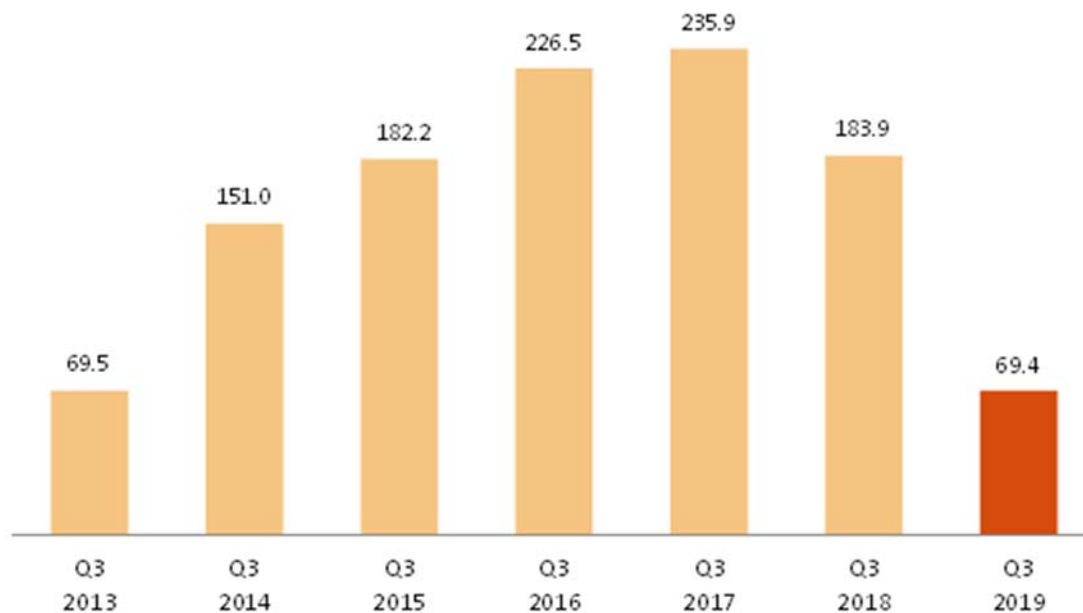
- Employment registered an increase of 69,400 persons in the third quarter of 2019 as compared with the previous quarter (0.35%), standing at 19,874,300 employed persons. The quarterly variation rate stood at 0.09% in non-seasonal terms. Employment has grown by 346,300 persons (1.77%) in the last 12 months.
- Employment increased this quarter by 34,200 people in the public sector and 35,200 in the private sector. In the last twelve months, employment has increased by 285,200 persons in the private sector and 61,100 in the public sector.
- Salaried employees increased this quarter by 101,700. Those with a permanent contracts increased by 25,100, while those with temporary contracts did so by 76,600. The number of salaried employees increased by 356,400 in the annual rate (permanent employment increased by 387,900 persons, while temporary employment decreased by 31,500). The number of self-employed workers decreased by 30,700 this quarter and by 8,800 in the last 12 months.
- This quarter, employment increased in *Services* by 87,700 and in *Industry* by 51,200. In turn, it decreased in *Agriculture* by 63,000 and in *Construction* by 6,500. In the last year, employment has risen in *Services* (248,600 more employed people), *Industry* (90,100) and *Construction* (29,700). On the other hand, it decreased by 22,200 in *Agriculture*.
- The highest employment rates in this quarter were registered in Illes Balears (41,000 more), Cataluña (31,300) and Comunitat Valenciana (16,700). The greatest decreases were observed in Andalucía (-35,000), País Vasco (-15,100) and Canarias (-8,500). In the last year, the Autonomous Communities whose employment level increased most were Comunidad de Madrid (104,500 more employed people), Cataluña (68,500) and Andalucía (68,100). In contrast, the largest decreases in employment over the last 12 months were in the Canary Islands (18,100 fewer employed persons) and Principado de Asturias (-8,300).
- The number of unemployed persons decreased by 16,200 this quarter (-0.50%), standing at 3,214,400. In seasonally adjusted terms, the quarterly variation was 1.72%. Over the last 12 months, unemployment has decreased by 111,600 persons (-3.36%).
- The unemployment rate stood at 13.92%, which is one tenth less than the previous quarter. Within the last year, this rate has decreased by 0.63 points.
- By Autonomous Community, the greatest quarterly drops in unemployment occurred in Illes Balears (-24,700), Comunidad de Madrid (-10,500) and Cataluña (-9,200). The greatest increases were registered in Andalucía (30,300 more unemployed people), Región de Murcia (6,000) and País Vasco (5,600). In annual terms, the greatest decreases in the number of unemployed persons occurred in Comunidad de Madrid (48,400 fewer), Andalucía (-32,400) and Comunitat Valenciana (-32,100). The largest annual increases in unemployment were recorded in Cataluña (18,400 more unemployed persons), Canarias (17,300) and Illes Balears (7,300).
- This quarter, the number of economically active persons increased by 53,200, up to 23,088,700. The activity rate decreased by three hundredths, standing at 58.72%. Over the last year, the economically active population has increased by 234,700 persons.

## Employment

The number of employed persons increased by 69,400 persons in the third quarter of 2019 and stood at 19,874,300. The quarterly employment variation rate stood at 0.35%.

The employment rate (percentage of employed persons amongst the population aged 16 and over) was 50.54%, representing an increase of three hundredths compared to the previous quarter. In annual variation, the rate rose by 36 hundredths.

### Quarterly variation of employment. Thousands (Q3 compared with Q2 of the same year)

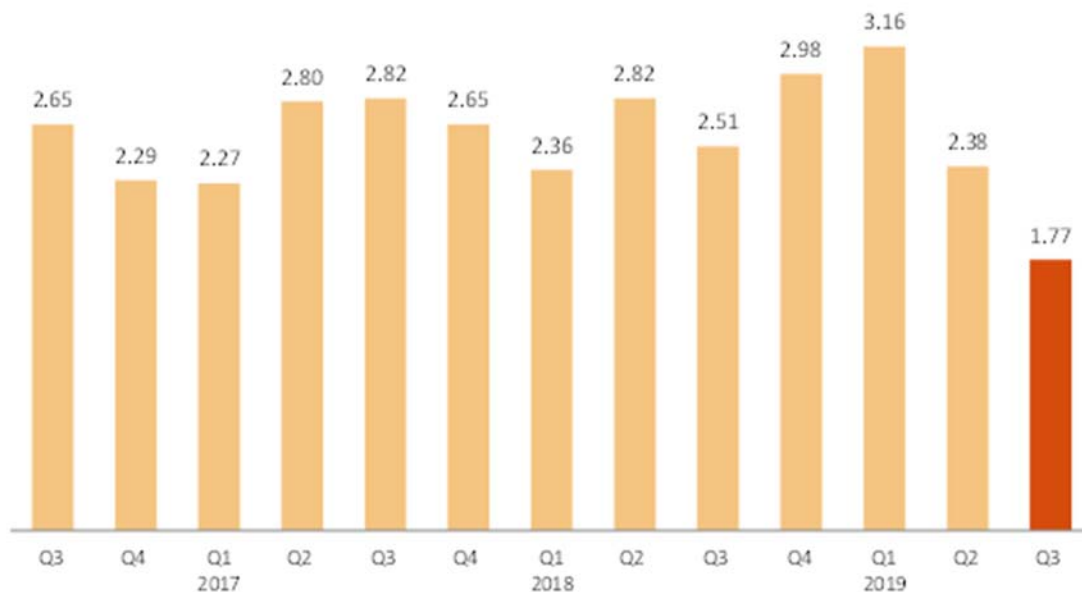


By sex, employment increased this quarter by 74,300 men and 4,900 women. By nationality, employment increased by 32,800 persons among Spaniards and by 36,700 among foreign nationals.

By age, employment increased this quarter among those under 30 and those aged 50 or over. The largest increase (81,800 more employed persons) occurred among people aged between 20 and 24. In contrast, employment was low among those aged between 30 and 49, with the 30 to 34 year-old group presenting the greatest decrease (-42,900 employed persons).

In the past 12 months, employment has increased by 346,300 persons (162,200 men and 184,200 women). The annual variation rate of employment was 1.77%, representing an decrease of 61 hundredths compared to the previous quarter.

## Annual variation rate of employment. Percentage.



This quarter, employment increased in *Services* (87,700 more people) and *Industry* (51,200). In contrast, it decreased in *Agriculture* (63,000 fewer) and *Construction* (-6,500).

In the last year, employment has increased in *Services* (248,600 more employed persons), *Industry* (90,100) and *Construction* (29,700), and decreased in *Agriculture* (-22,200).

Full-time employment increased by 231,700 persons this quarter, whilst part-time employment decreased by 162,300. The percentage of persons employed part-time decreased by 87 hundredths, to 14.03%.

Over the last 12 months, full-time employment has increased by 270,900 persons and part-time employment by 75,400.

The number of salaried employees increased this quarter by 101,700. Those with a permanent contract increased by 25,100, while those with a temporary contract increased by 76,600. The temporary employment rate increased 30 hundredths, up to 26.66%.

Over the last 12 months, the number of salaried employees has increased by 356,400. Permanent employment increased by 387,900 persons, while temporary employment decreased by 31,500.

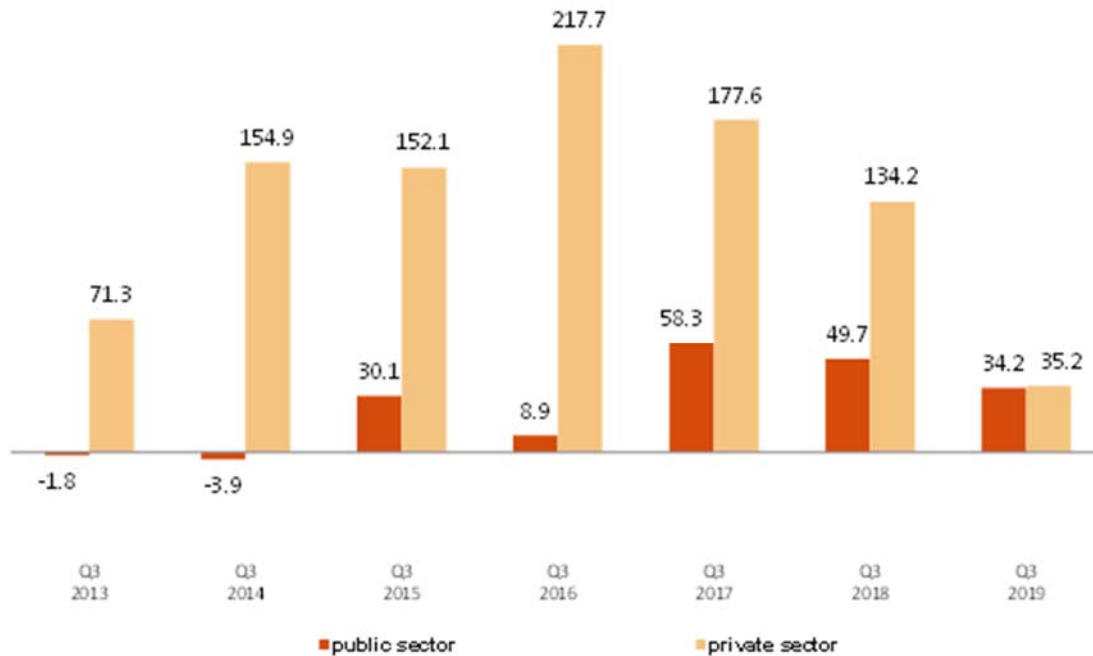
The number of self-employed persons decreased by 30,700 persons in quarterly variation, and by 8,800 over the past year.

This quarter, private employment<sup>1</sup> increased by 35,200 persons, standing at 16,645,700. Public employment<sup>2</sup> increased by 34,200, up to 3,228,700.

<sup>1</sup> Employment in the private sector includes: private sector salaried employees, employers, self-employed workers and self-employed without employees, members of cooperatives, contributing family workers and other professional situations.

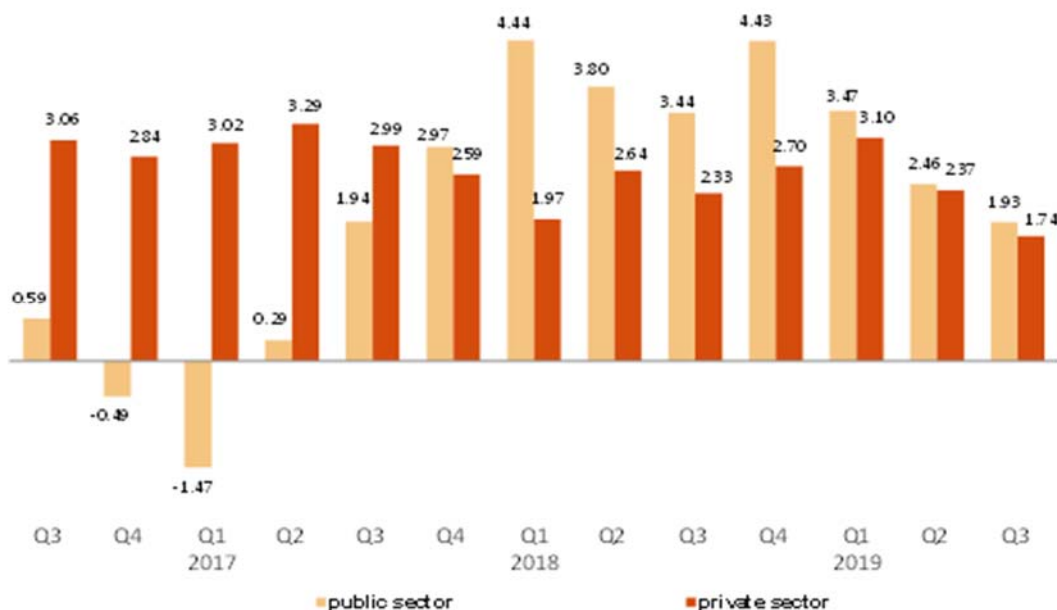
<sup>2</sup> Employment in the public sector includes all salaried employees of public companies and of the National and Regional Administrations, including both workers contributing to the General Social Security System and those affiliated to the Special Civil Service System.

## Quarterly variation of employment by nature of employer. Thousands (Q3 compared with Q2 of the same year)



Employment in the private sector showed an annual variation of 1.74%, while public employment of 1.93%. In the past twelve months, employment has increased by 285,200 persons in the private sector and by 61,100 in the public sector.

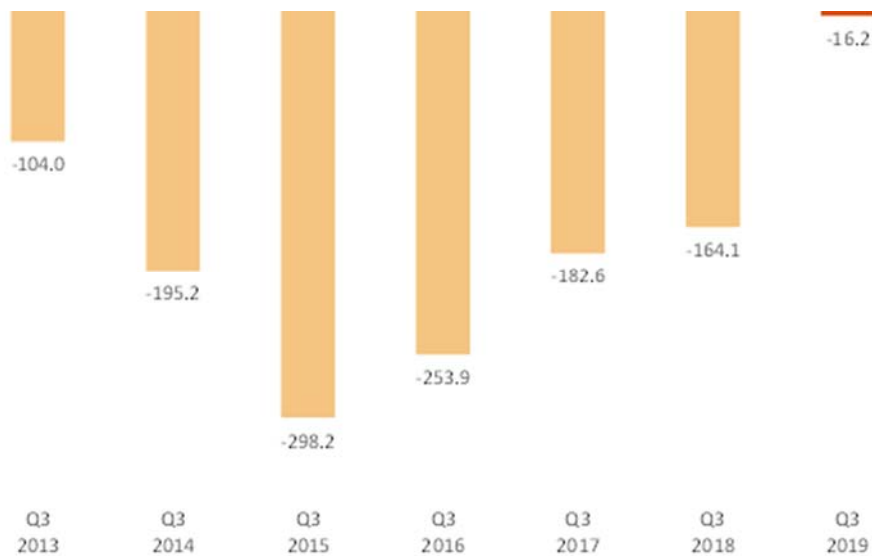
## Annual variation rate of employment by nature of employer. Percentage.



## Unemployment and unemployment rate

Unemployment decreased by 16,200 persons this quarter. The total number of unemployed persons stood at 3,214,400. In relative terms, the quarterly variation of unemployment was -0.50%.

### Quarterly variation of unemployment. Thousands (Q3 compared with Q2 of the same year)



The unemployment rate decreased by 10 hundredths and stood at 13.92%. In the last 12 months, this rate has decreased by 63 hundredths.

By sex, the number of unemployed men decreased by 33,700 this quarter, standing at 1,500,500. In contrast, unemployment among women increased by 17,400, reaching 1,713,900.

The female unemployment rate increased by 14 hundredths and stood at 15.92%. The male unemployment rate decreased by 31 hundredths and stood at 12.17%.

By age group, unemployment fell this quarter among those aged 55 and over (-19,500) and those aged between 25 and 54 (-15,200). In contrast, the number of unemployed persons increased by 17,200 among people aged 20 to 24 and by 1,300 among those aged between 16 and 19.

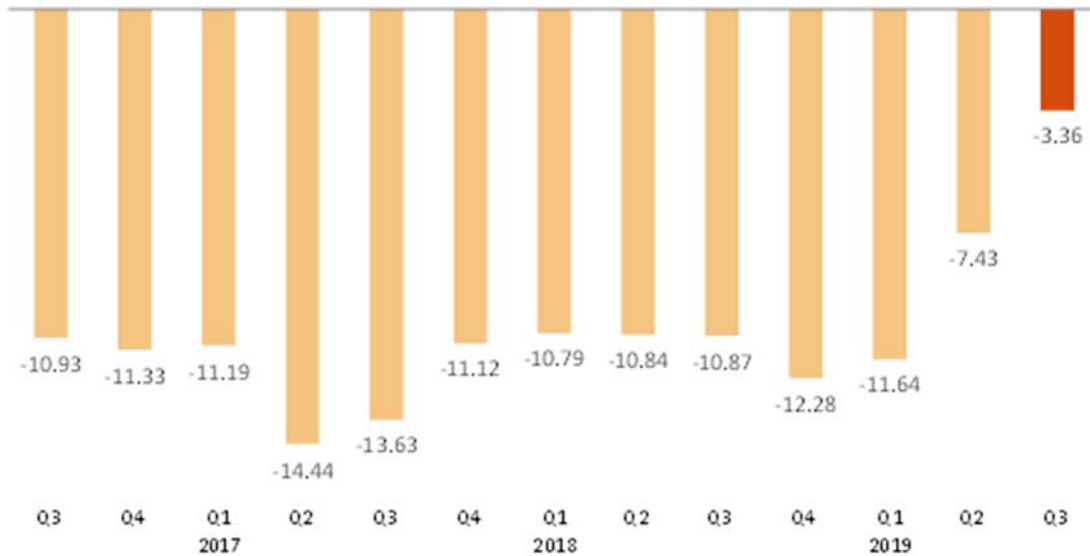
By nationality, unemployment increased this quarter among Spaniards by 9,300 and decreased among foreigners by 25,600. The unemployment rate of the Spanish population was 13.11%, while that of the foreign population was 19.34%.

Unemployment decreased in *Industry* (-15,800) and *Services* (-8,600). In contrast, it increased this quarter in *Agriculture* (20,000 more unemployed persons) and *Construction* (3,100).

Unemployment decreased by 48,900 persons among those who lost their job over a year ago and by 33,900 among those who are seeking their first job.

The evolution of unemployment in the annual rate was -3.36%. The total number of unemployed persons has decreased by 111,600 persons in one year, with a decrease of 109,100 for men and 2,500 for women.

Annual variation rate of unemployment. Percentage.



By age, the largest decrease in unemployment over the last 12 months was in the group aged between 25 and 54 (with 117,500 fewer unemployed persons).

By sectors, in the last year the unemployment rate has decreased in *Industry* (11,800 fewer unemployed persons). On the other hand, it has risen in *Services* (60,700), *Agriculture* (9,000) and *Construction* (5,300). In turn, the number of unemployed persons who lost their jobs over a year ago has decreased by 172,600 and that of unemployed persons looking for their first job has decreased by 2,100.

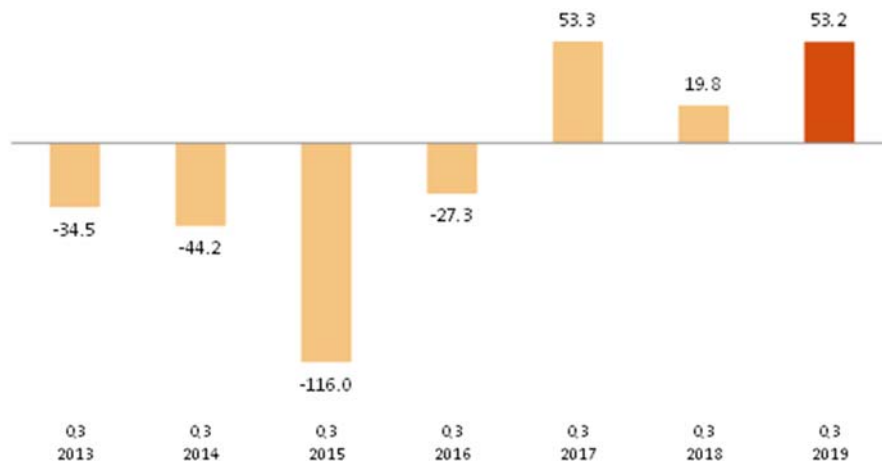
### Economically active population and activity rate

The economically active population experienced an increase of 53,200 persons in the third quarter of 2017, standing at 23,088,700. The number of economically active women increased by 12,500, whereas the number of active men increased by 40,700.

By nationality, the number of economically active persons increased in this quarter by 42,100 among Spaniards and 11,100 among foreign nationals.

The activity rate fell three hundredths to 58.72%. Male unemployment fell by three hundredths and stood at 64.46%, while female unemployment fell by eight hundredths to 53.28%.

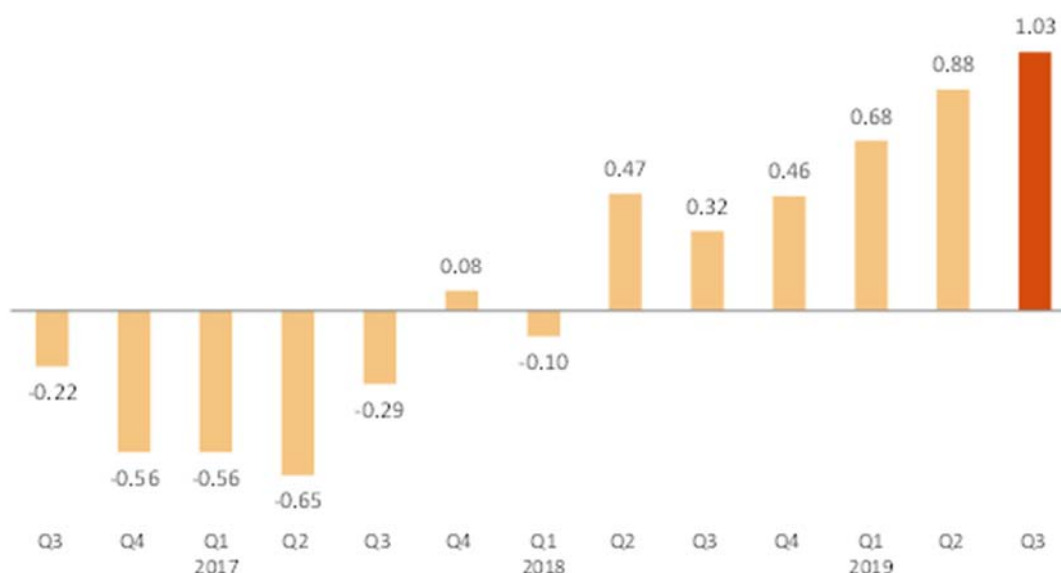
## Quarterly variation of activity. Thousands (Q3 compared with Q2 of the same year)



The economic activity rate of Spaniards increased by six hundredths compared to the previous quarter, standing at 57.25%. For foreigners it fell by 99 hundredths to 70.84%. The difference between both activity rates is mainly explained by the different age structures of both populations.

In annual terms, the economically active population has increased by 234,700 persons. The annual variation rate of economically active persons was 1.03%.

## Annual variation rate of activity. Percentage.





## Households

The number of households increased by 32,700 this quarter, standing at 18,709,800. Of these, 4,836,600 were single-person households.

Households in which all economically active members were unemployed increased by 17,200 this quarter, up to a total of 1,010,000. Of these, 270,000 were single-person households.

On the other hand, the number of households in which all of the economically active members were employed increased by 61,200, standing at 10,707,400. Of these, 1,981,400 were single-person households.

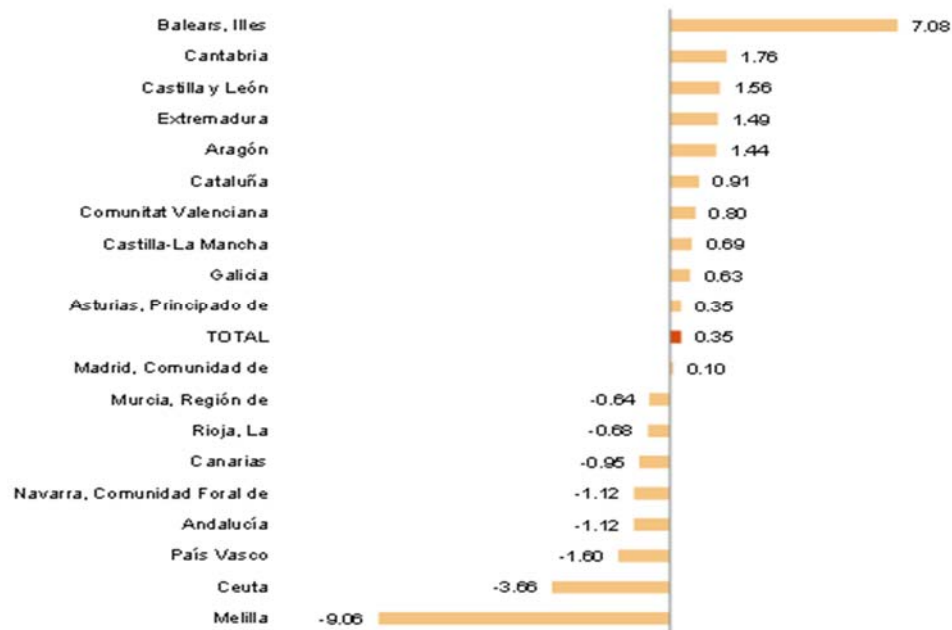
In annual comparison, the number of households with at least one economically active member in which those members were unemployed has decreased by 73,700, while those where all active members were employed has increased by 156,400.

## Results by Autonomous Communities<sup>3</sup>

The highest employment rates in this quarter were registered in Illes Balears (41,000 more), Cataluña (31,300) and Comunitat Valenciana (16,700). Meanwhile, the greatest decreases were observed in Andalucía (-35,000), País Vasco (-15,100) and Canarias (-8,500).

In relative terms, the Autonomous Communities with the highest quarterly employment increase were Illes Balears (7.08%), Cantabria (1.76%) and Castilla y León (1.56%).

### Quarterly variation rate of employment by autonomous community. Percentage.



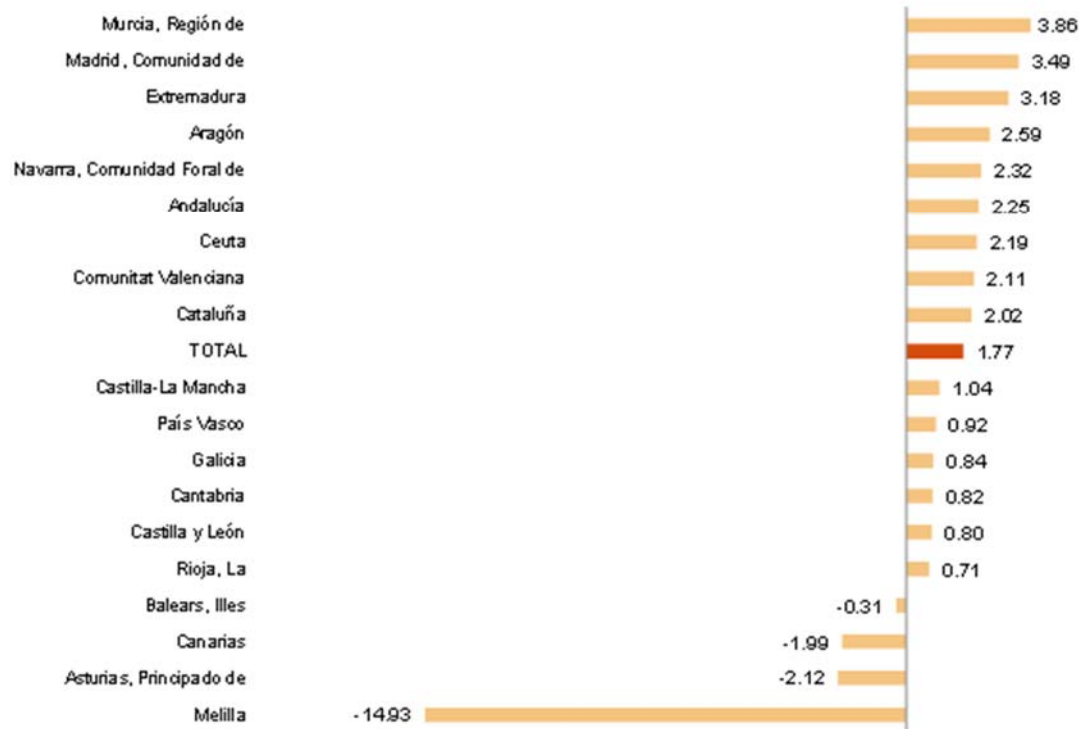
Within the last year, the highest increases in employment were observed in Comunidad de Madrid (104,500 more), Cataluña (68,500) and Andalucía (68,100). Meanwhile, in the past 12 months, employment decreased in Canarias (-18,100), Principado de Asturias (-8,300) and Illes Balears (-1,900).

<sup>3</sup> As with the rest of the EAPS data, employment results in this section are presented according to the Autonomous Community of residence of those persons interviewed in the survey, and not according to where their work centre is.



In relative terms, the Autonomous Communities with the highest annual employment increases were Región de Murcia (3.86%), Comunidad de Madrid (3.49%) and Extremadura (3.18%). Meanwhile, Principado de Asturias (-2.12%), Canarias (-1.99%) and Illes Balears (-0.31%) registered negative annual variation rates.

## Annual variation rate of employment by autonomous community. Percentage.



The greatest quarterly drops in unemployment occurred in Illes Balears (-24,700), Comunidad de Madrid (-10,500) and Cataluña (-9,200). Meanwhile, the largest increases in occurred in the Andalucía (30,300 more unemployed persons), Región de Murcia (6,000) and País Vasco (5,600).

In annual terms, the greatest decreases in the number of unemployed persons occurred in Comunidad de Madrid (-48,400), Andalucía (-32,400) and Comunitat Valenciana (-32,100). In contrast, the greatest increases in the last 12 months were observed in Cataluña (18,400 more), Canarias (17,300) and Illes Balears (7,300).

Illes Balears (8.18%), Comunidad Foral de Navarra (8.19%) and Cantabria (8.73%) recorded the lowest unemployment rates this quarter. At the other end of the scale, Andalucía (21.83%), Canarias (21.19%) and Extremadura (19.68%) registered the highest rates.

This quarter, the greatest increases in economic activity were registered in Cataluña (22,100 more economically active persons), Illes Balears (16,300) and Castilla y León and Galicia (10,000 in each). The greatest decreases were observed in País Vasco (9,600 fewer economically active people), Canarias (-8,200) and Comunidad de Madrid (-7,400).

In the last 12 months, Cataluña (86,900 more), Comunidad de Madrid (56,100) and Andalucía (35,700) registered the greatest increases in the number of economically active persons. In turn, the greatest decrease was recorded in Principado de Asturias, (4,500 fewer).

This quarter, the activity rates fluctuated between 67.02% for Illes Balears and 50.74% for Principado de Asturias.

**Seasonally adjusted series**

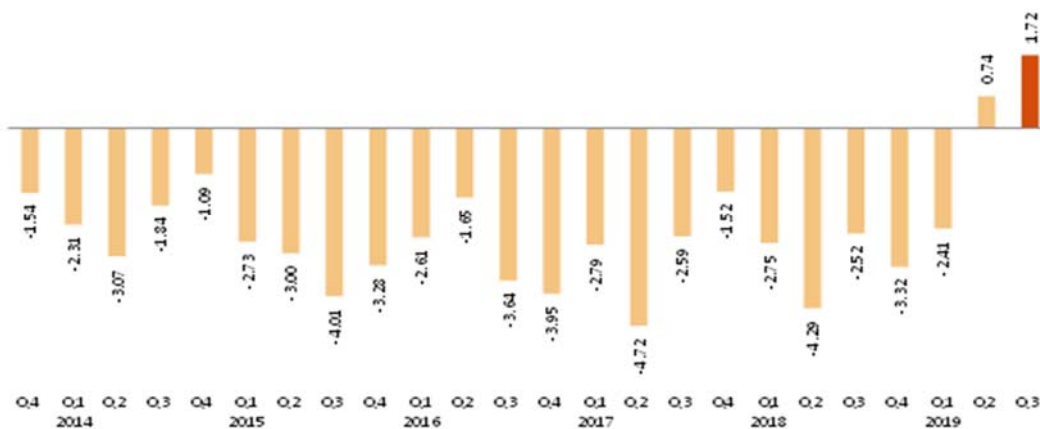
In the third quarter of 2019, the quarterly employment variation rate, adjusted for seasonal effects, was 0.09%.

**Quarterly variation rate of seasonally adjusted employment. Percentage**



Regarding seasonally-adjusted unemployment results, there was an increase of 1.72%.

**Quarterly variation rate of seasonally adjusted unemployment. Percentage**



As explained in the methodology used for seasonal adjustment, the seasonal adjustment model is maintained for a year, with the first quarters corresponding to the time of the model's re-identification, but the coefficients are recalculated quarterly, so that each quarter the previous results are reviewed (either by re-identification or by revision of coefficients) and therefore the latest series available must always be consulted.

The series of the quarterly variation rates of the seasonally adjusted results of employment and unemployment since 2005 and the description of the method used can be found in:

[http://www.ine.es/daco/daco42/daco4211/epa\\_desestacional.xlsx](http://www.ine.es/daco/daco42/daco4211/epa_desestacional.xlsx)

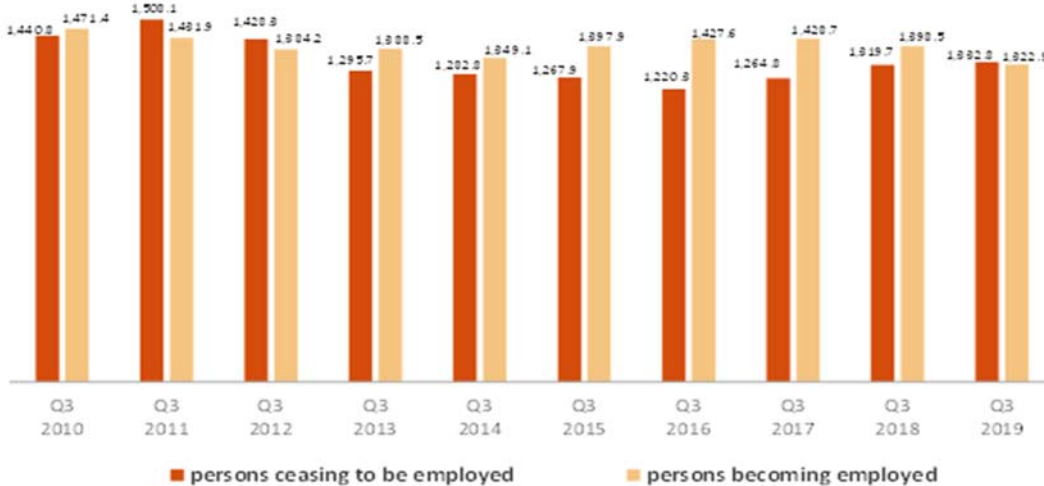
## Flows in absolute values with respect to the previous quarter<sup>4</sup>

The total inflow into employment in the third quarter of 2019 was 1,322,900 people, 75,600 less than in the same quarter of the previous year.

However, the outflow from employment was 1,332,800 people, which is 13,100 more than in the same quarter of 2018.

## Flows of persons becoming and ceasing to be employed each quarter

Thousands

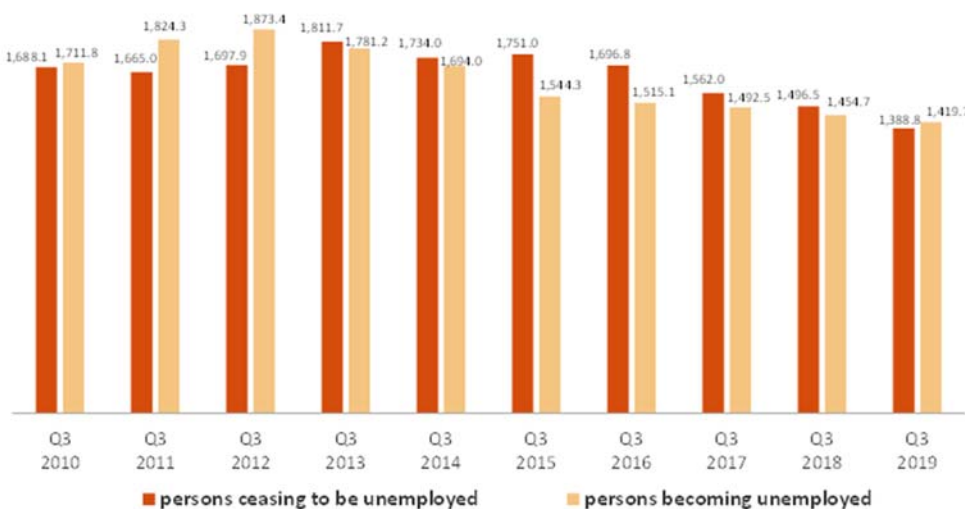


The number of persons who were unemployed three months ago but are not currently unemployed stood at 1,388,800, which is 107,700 fewer persons than in the same period in 2018.

However, the total inflow to unemployment reached 1,419,700 people, which is 35,000 fewer persons than in the same quarter of 2018.

## Flows of persons becoming and ceasing to be unemployed each quarter

Thousands

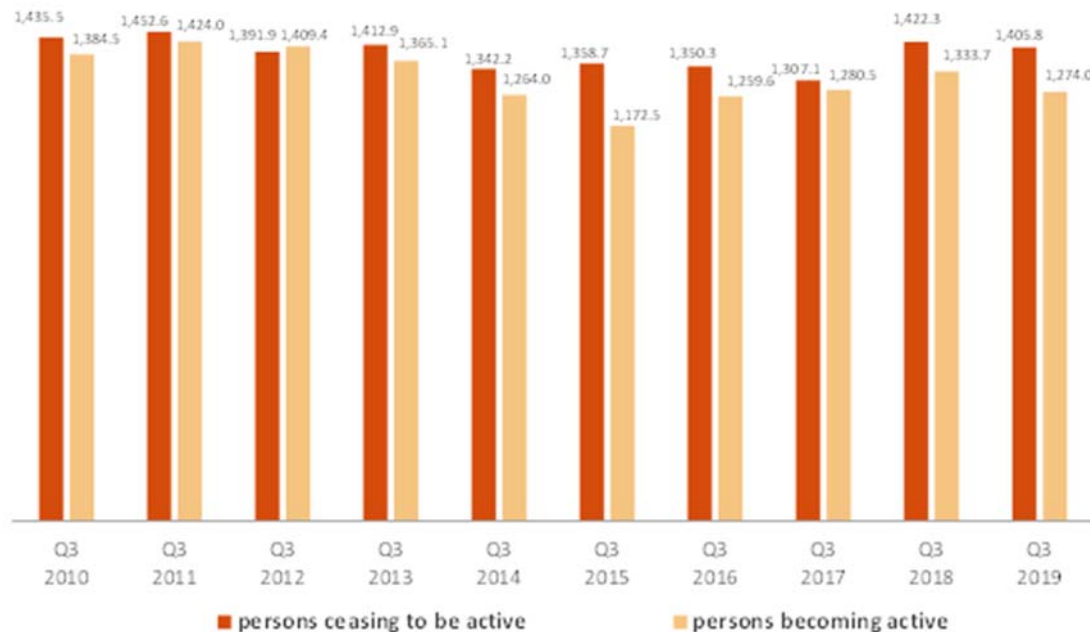


<sup>4</sup> This section compiles the results of the Economically Active Population Flow Statistics. Due to the methodology used when preparing it, the results might not match the net balances of quarterly EAPS. The differences are caused by the “no data recorded” groups (persons turning 16 years old in the change between one quarter and the next and those who did not live in Spain in the previous quarter).

The inflow into activity in this third quarter was 1,274,000, a figure 59,700 lower than that of the same period in 2018.

Meanwhile, a total of 1,405,800 people have left activity this quarter, compared to 1,422,300 who did so during the same quarter in the previous year (that is, 16,500 fewer).

## Flows of persons becoming and ceasing to be active each quarter. Thousands



The outflow from employment to inactivity of people aged 60 and over was 112,900 this quarter. This figure is 2,400 higher than the one observed in the same period of 2018.

The number of people under 25 who have been entering employment directly from inactivity this quarter stood at 252,500, a figure 9,300 higher than that observed in the third quarter of 2018.

The flow data on which these comments are based can be found in the annex to this press release <http://www.ine.es/daco/daco42/daco4211/epaflujo0319.xlsx>

## EAPS results by province

The provincial results summary of the EAPS may be accessed via the following link:

<http://www.ine.es/daco/daco42/daco4211/epapro0319.pdf>

All the provincial information can also be accessed from the INEbase database:

<http://www.ine.es/dynt3/inebase/index.html?padre=996>

## Data review and update

The data published today are final. All results are available on INEBase.

## Methodological note

The Economically Active Population Survey (EAPS) has been carried out since 1964 and the methodology currently in force is that of 2005.

It is a continuous, quarterly research addressed to families, whose main purpose is to obtain data on the labour force and its various categories (employed, unemployed), as well as on the population outside the labour market (inactive).

As of the third quarter of 2009, the survey includes an additional sample in Galicia that is collected by the Galician Statistics Institute (IGE) using the same fieldwork system and methodology as the INE.

**Type of survey:** quarterly continuous survey.

**Population scope:** population residing in family dwellings.

**Geographical scope:** the entire national territory.

**Reference period of the results:** the quarter.

**Reference period of the information:** the week before the interview.

**Sample size:** 3,822 census tracts, around 65,000 dwellings and 160,000 people. Of the 3,822 tracts, 234 correspond to the additional sample of Galicia.

**Type of sampling:** two-stage sampling with stratification in the first stage units. The first stage units are the census tracts and the second stage units are the inhabited family dwellings.

**Collection method:** personal and telephone interview.

For more information you can access the methodology at:

<https://www.ine.es/inebaseDYN/epa30308/docs/resumetepa.pdf>

To the technical details of the survey design and evaluation of the quality of the data in:

[http://www.ine.es/inebaseDYN/epa30308/docs/epa05\\_disenc.pdf](http://www.ine.es/inebaseDYN/epa30308/docs/epa05_disenc.pdf)

And the standardised methodological report at:

<https://www.ine.es/dynt3/metadatos/es/RespuestaDatos.html?oe=30308>

The Statistics on Economically Active Population Flows (EAPFS) collect information regarding the follow-up of the population, or specific groups thereof, between one quarter and the previous one in absolute values, regarding its relation with labour market. This information links the interviewee's situations in two moments of time on the basis of the EAPS in order to study its evolution.

Given that in the EAPS sample one sixth is renewed each quarter and the remaining 5/6 parts are kept fixed between two consecutive quarters, the common part of the sample between the two conducts of the survey is used to obtain flow statistics from the questions relating to the situation in which the interviewee was in the current and previous quarters.

**Type of survey:** quarterly exploitation of the common EAPS sample between consecutive quarters that provides estimates in absolute values of the relation with the activity in the current period compared with that of the previous quarter.

**Population scope:** population residing in family dwellings.

**Geographical scope:** the entire national territory.

**Reference period of the results:** the quarter.

**Reference period of the information:** the week before the interview.

**Sample size:** 3,822 census tracts. The common EPA sample between consecutive quarters is approximately 100,000 people aged 16 and older.

**Type of sampling:** two-stage sampling with stratification in the first stage units. The first stage units are the census tracts and the second stage units are the inhabited family dwellings.

**Collection method:** personal and telephone interview.

For more information you can access the methodology at:

[https://www.ine.es/en/inebaseDYN/flujos30310/docs/metoflujos\\_valores\\_absolutos\\_en.pdf](https://www.ine.es/en/inebaseDYN/flujos30310/docs/metoflujos_valores_absolutos_en.pdf)

And the standardised methodological report at:

<https://www.ine.es/dynt3/metadatos/en/RespuestaDatos.html?oe=30310>

---

For further information see **INEbase:** [www.ine.es/en/](http://www.ine.es/en/) Twitter: [@es\\_ine](https://twitter.com/es_ine)

All press releases at: [www.ine.es/en/prensa/prensa\\_en.htm](http://www.ine.es/en/prensa/prensa_en.htm)

**Press office:** Telephone numbers: (+34) 91 583 93 63 /94 08 – [gprensa@ine.es](mailto:gprensa@ine.es)

**Information Area:** Telephone number: (+34) 91 583 91 00 – [www.ine.es/infoine/?L=1](http://www.ine.es/infoine/?L=1)

---

## Economically Active Population Survey Third Quarter 2019

### National results

(Continues)

	Current quarter	Variation on previous quarter		Variation on same quarter, previous year	
		Difference	Percentage	Difference	Percentage
<b>1. Population aged 16 years and over by sex and labour status</b>					
BOTH SEXES					
<b>Population aged 16 years and over</b>	39,322.0	108.9	0.28	409.6	1.05
Active population	23,088.7	53.2	0.23	234.7	1.03
- Employed persons	19,874.3	69.4	0.35	346.3	1.77
- Unemployed persons	3,214.4	-16.2	-0.50	-111.6	-3.36
Inactive population	16,233.3	55.8	0.34	174.9	1.09
Activity rate	58.72	-0.03	-	-0.01	-
Unemployment rate	13.92	-0.10	-	-0.63	-
<b>Population aged 16 to 64 years</b>	30,453.5	69.7	0.23	256.1	0.85
Activity rate (16-64)	75.06	-0.01	-	0.06	-
Unemployment rate (16-64)	14.02	-0.08	-	-0.63	-
Employment rate (16-64)	64.54	0.05	-	0.52	-
MALES					
<b>Population aged 16 years and over</b>	19,121.4	53.4	0.28	201.2	1.06
Active population	12,325.0	40.7	0.33	53.0	0.43
- Employed persons	10,824.5	74.3	0.69	162.2	1.52
- Unemployed persons	1,500.5	-33.7	-2.19	-109.1	-6.78
Inactive population	6,796.3	12.7	0.19	148.2	2.23
Activity rate	64.46	0.03	-	-0.41	-
Unemployment rate	12.17	-0.31	-	-0.94	-
<b>Population aged 16 to 64 years</b>	15,225.9	34.6	0.23	127.4	0.84
Activity rate (16-64)	80.07	0.06	-	-0.41	-
Unemployment rate (16-64)	12.25	-0.30	-	-0.95	-
Employment rate (16-64)	70.26	0.29	-	0.40	-
FEMALES					
<b>Population aged 16 years and over</b>	20,200.7	55.6	0.28	208.4	1.04
Active population	10,763.7	12.5	0.12	181.7	1.72
- Employed persons	9,049.8	-4.9	-0.05	184.2	2.08
- Unemployed persons	1,713.9	17.4	1.03	-2.5	-0.14
Inactive population	9,437.0	43.1	0.46	26.7	0.28
Activity rate	53.28	-0.08	-	0.35	-
Unemployment rate	15.92	0.14	-	-0.30	-
<b>Population aged 16 to 64 years</b>	15,227.6	35.0	0.23	128.7	0.85
Activity rate (16-64)	70.05	-0.07	-	0.53	-
Unemployment rate (16-64)	16.03	0.18	-	-0.29	-
Employment rate (16-64)	58.82	-0.19	-	0.64	-

### 2. Spanish population<sup>(1)</sup> aged 16 years and over by labour status

SPANISH POPULATION AGED 16 YEARS AND OVER	35,071.0	34.9	0.10	119.4	0.34
Active population	20,077.5	42.1	0.21	36.5	0.18
- Employed persons	17,445.5	32.8	0.19	149.8	0.87
- Unemployed persons	2,632.0	9.3	0.36	-113.3	-4.13
Inactive population	14,993.5	-7.2	-0.05	82.9	0.56
Activity rate	57.25	0.06	-	-0.09	-
Unemployment rate	13.11	0.02	-	-0.59	-

<sup>(1)</sup> including dual nationality

24 October 2019



## National results

(Continuation)

	Current quarter	Variation on previous quarter		Variation on same quarter, previous year		
		Difference	Percentage	Difference	Percentage	
<b>3. Foreign population aged 16 years and over by labour status</b>						
FOREIGN POPULATION AGED 16 YEARS AND OVER	4,251.0	74.0	1.77	290.2	7.33	
Active population	3,011.2	11.1	0.37	198.2	7.05	
- Employed persons	2,428.8	36.7	1.53	196.5	8.80	
- Unemployed persons	582.4	-25.6	-4.21	1.7	0.29	
Inactive population	1,239.8	62.9	5.35	92.0	8.02	
Activity rate	70.84	-0.99	-	-0.19	-	
Unemployment rate	19.34	-0.92	-	-1.30	-	
<b>4. Employed persons by sex, age group and economic sector</b>						
BOTH SEXES	19,874.3	69.4	0.35	346.3	1.77	
16 to 19 years	178.6	28.8	19.26	13.1	7.93	
20 to 24 years	954.0	81.8	9.38	46.0	5.06	
25 to 29 years	1,712.8	12.9	0.76	17.9	1.05	
30 to 34 years	2,103.8	-42.9	-2.00	-16.8	-0.79	
35 to 39 years	2,657.4	-26.0	-0.97	-49.6	-1.83	
40 to 44 years	3,114.0	-23.5	-0.75	-28.9	-0.92	
45 to 49 years	2,956.7	-10.1	-0.34	94.0	3.28	
50 to 54 years	2,661.2	31.4	1.19	88.8	3.45	
55 and over	3,535.8	17.0	0.48	181.9	5.42	
MALES	10,824.5	74.3	0.69	162.2	1.52	
16 to 19 years	103.4	15.4	17.52	9.6	10.26	
20 to 24 years	534.6	50.8	10.51	50.6	10.46	
25 to 29 years	889.5	10.2	1.16	-4.0	-0.44	
30 to 34 years	1,129.1	-16.8	-1.47	0.8	0.07	
35 to 39 years	1,420.4	-23.1	-1.60	-45.9	-3.13	
40 to 44 years	1,686.4	-15.5	-0.91	-22.2	-1.30	
45 to 49 years	1,620.4	0.1	0.01	41.2	2.61	
50 to 54 years	1,465.1	30.6	2.14	44.1	3.10	
55 and over	1,975.6	22.6	1.16	87.9	4.65	
FEMALES	9,049.8	-4.9	-0.05	184.2	2.08	
16 to 19 years	75.1	13.4	21.76	3.5	4.87	
20 to 24 years	419.4	31.0	7.98	-4.6	-1.09	
25 to 29 years	823.3	2.7	0.33	21.8	2.72	
30 to 34 years	974.8	-26.1	-2.61	-17.5	-1.77	
35 to 39 years	1,237.0	-2.9	-0.23	-3.8	-0.30	
40 to 44 years	1,427.7	-8.0	-0.56	-6.7	-0.47	
45 to 49 years	1,336.3	-10.2	-0.76	52.8	4.12	
50 to 54 years	1,196.1	0.7	0.06	44.7	3.88	
55 and over	1,560.2	-5.6	-0.36	94.0	6.41	
TOTAL EMPLOYED PERSONS	19,874.3	69.4	0.35	346.3	1.77	
Agriculture	746.2	-63.0	-7.79	-22.2	-2.88	
Industry	2,815.8	51.2	1.85	90.1	3.31	
Construction	1,269.9	-6.5	-0.51	29.7	2.40	
Services	15,042.4	87.7	0.59	248.6	1.68	

## National results

(Continuation)

	Current quarter	Variation on previous quarter		Variation on same quarter, previous year	
		Difference	Percentage	Difference	Percentage

### 5. Employed persons by professional status, type of contract, public / private sectors and working hours

TOTAL EMPLOYED PERSONS	19,874.3	69.4	0.35	346.3	1.77
BY PROFESSIONAL STATUS					
Self-employed persons	3,077.7	-30.7	-0.99	-8.8	-0.29
- Employers	968.0	26.3	2.79	-13.4	-1.37
- Independent workers	2,009.3	-51.3	-2.49	8.3	0.42
- Cooperative members	24.4	-4.9	-16.72	-3.0	-10.87
- Family workers	75.9	-0.7	-0.97	-0.8	-0.98
Employees	16,790.0	101.7	0.61	356.4	2.17
- With a permanent job	12,313.6	25.1	0.20	387.9	3.25
- With a temporary job	4,476.4	76.6	1.74	-31.5	-0.70
Others	6.7	-1.6	-19.60	-1.2	-15.44
BY PUBLIC / PRIVATE SECTORS					
Public sector employed persons	3,228.7	34.2	1.07	61.1	1.93
Private sector employed persons	16,645.7	35.2	0.21	285.2	1.74
BY WORKING HOURS					
Full-time employed persons	17,085.1	231.7	1.37	270.9	1.61
Males	10,097.4	112.5	1.13	133.6	1.34
Females	6,987.7	119.2	1.73	137.3	2.00
Part-time employed persons	2,789.2	-162.3	-5.50	75.4	2.78
Males	727.1	-38.2	-4.99	28.6	4.09
Females	2,062.1	-124.1	-5.68	46.9	2.33

(\*) Private employment includes all persons in employment other than public employees. Namely: private employees, employers, independent workers, cooperative members, family workers and other professional status.

### 6. Unemployed persons by sex, age group, and economic sector

BOTH SEXES	3,214.4	-16.2	-0.50	-111.6	-3.36
16 to 19 years	130.1	1.3	0.98	-7.6	-5.55
20 to 24 years	394.9	17.2	4.55	3.9	1.01
25 to 54 years	2,216.7	-15.2	-0.68	-117.5	-5.03
55 and over	472.6	-19.5	-3.95	9.6	2.07
MALES	1,500.5	-33.7	-2.19	-109.1	-6.78
16 to 19 years	71.8	0.2	0.21	-6.2	-7.92
20 to 24 years	201.0	8.2	4.25	-19.0	-8.62
25 to 54 years	991.9	-24.3	-2.39	-85.0	-7.89
55 and over	235.8	-17.7	-6.99	1.0	0.43
FEMALES	1,713.9	17.4	1.03	-2.5	-0.14
16 to 19 years	58.3	1.1	1.93	-1.5	-2.46
20 to 24 years	194.0	9.0	4.86	22.9	13.39
25 to 54 years	1,224.8	9.0	0.74	-32.5	-2.58
55 and over	236.8	-1.7	-0.72	8.6	3.76
TOTAL UNEMPLOYED PERSONS	3,214.4	-16.2	-0.50	-111.6	-3.36
Agriculture	203.3	20.0	10.94	9.0	4.61
Industry	149.8	-15.8	-9.55	-11.8	-7.32
Construction	137.7	3.1	2.27	5.3	3.99
Services	1,146.0	-8.6	-0.74	60.7	5.59
Lost their job more than 1 year ago	1,210.4	-48.9	-3.88	-172.6	-12.48
First job seekers	367.1	33.9	10.17	-2.1	-0.57

## National results

(Conclusion)

	Current quarter	Variation on previous quarter		Variation on same quarter, previous year	
		Difference	Percentage	Difference	Percentage

### 7. Unemployment rate by relationship with the reference person

	Current quarter	Variation on previous quarter	Percentage	Variation on same quarter, previous year	Percentage
TOTAL	13.92	-0.10	-	-0.63	-
Reference person	10.98	-0.37	-	-0.64	-
Spouse or partner	11.66	0.20	-	-0.19	-
Child	25.21	0.00	-	-1.31	-
Other relatives	19.08	-1.60	-	-2.05	-
Unrelated persons	10.99	-3.35	-	-1.42	-

### 8. Household data

	Current quarter	Variation on previous quarter	Percentage	Variation on same quarter, previous year	Percentage
TOTAL HOUSEHOLDS	18,709.8	32.7	0.18	120.4	0.65
Households with at least one active meml	13,443.6	26.4	0.20	77.3	0.58
- All members employed	10,707.4	61.2	0.58	156.4	1.48
- All members unemployed	1,010.0	17.2	1.73	-73.7	-6.80
Households without any active population	5,266.3	6.3	0.12	43.0	0.82

### Mobility according to activity in current and previous quarter

Classification in previous quarter	Classification in current quarter			
	Total	Employed	Unemployed persons	Inactive
<b>BOTH SEXES</b>				
Total	39,322.0	19,874.3	3,214.4	16,233.3
Employed persons	19,884.3	18,551.4	697.1	635.7
Unemployed persons	3,183.5	763.2	1,794.7	625.6
Inactive	16,101.5	556.7	717.4	14,827.5
Not classifiable	152.7	3.0	5.2	144.5
<b>MALES</b>				
Total	19,121.4	10,841.1	1,484.8	6,795.5
Employed persons	10,787.3	10,192.1	341.2	254.1
Unemployed persons	1,503.8	392.7	856.2	254.8
Inactive	6,753.3	254.9	286.0	6,212.3
Not classifiable	77.0	1.4	1.4	74.2
<b>FEMALES</b>				
Total	20,200.7	9,033.2	1,729.6	9,437.9
Employed persons	9,096.9	8,359.4	355.9	381.6
Unemployed persons	1,679.8	370.5	938.5	370.8
Inactive	9,348.3	301.8	431.3	8,615.2
Not classifiable	75.7	1.6	3.8	70.3

Weighting factors of current quarter (backward analysis)

## Results by autonomous community and autonomous city

(Continues)

	Current quarter	Variation on previous quarter		Variation on same quarter, previous year	
		Difference	Percentage	Difference	Percentage
<b>1. Population aged 16 years and over</b>					
TOTAL	39,322.0	108.9	0.28	409.6	1.05
Andalucía	6,976.8	14.8	0.21	56.7	0.82
Aragón	1,104.0	2.5	0.22	9.3	0.85
Asturias, Principado de	889.2	-0.6	-0.07	-3.2	-0.35
Balears, Illes	1,007.1	6.6	0.66	21.4	2.17
Canarias	1,900.5	8.9	0.47	38.2	2.05
Cantabria	494.0	0.5	0.11	1.8	0.37
Castilla y León	2,044.2	-1.0	-0.05	-3.9	-0.19
Castilla-La Mancha	1,685.7	3.0	0.18	12.0	0.72
Cataluña	6,294.0	19.0	0.30	85.8	1.38
Comunitat Valenciana	4,180.9	13.2	0.32	47.9	1.16
Extremadura	894.6	-0.4	-0.05	-1.9	-0.21
Galicia	2,335.9	1.5	0.07	2.4	0.10
Madrid, Comunidad de	5,532.3	31.5	0.57	103.9	1.91
Murcia, Región de	1,218.8	3.7	0.30	18.3	1.53
Navarra, Comunidad Foral de	537.5	1.4	0.26	6.1	1.15
País Vasco	1,835.3	3.4	0.19	12.1	0.66
Rioja, La	262.8	0.8	0.30	2.3	0.88
Ceuta	65.6	0.0	0.01	0.0	-0.03
Melilla	63.0	0.2	0.39	0.3	0.46

## 2. Active population

TOTAL	23,088.7	53.2	0.23	234.7	1.03
Andalucía	3,966.6	-4.7	-0.12	35.7	0.91
Aragón	659.0	7.2	1.11	15.4	2.39
Asturias, Principado de	451.2	3.0	0.66	-4.5	-0.99
Balears, Illes	674.9	16.3	2.48	5.3	0.80
Canarias	1,130.7	-8.2	-0.72	-0.8	-0.07
Cantabria	272.6	3.9	1.45	1.4	0.53
Castilla y León	1,131.5	10.0	0.89	7.5	0.66
Castilla-La Mancha	984.7	3.0	0.30	3.0	0.31
Cataluña	3,884.5	22.1	0.57	86.9	2.29
Comunitat Valenciana	2,442.7	8.4	0.35	11.3	0.46
Extremadura	499.0	2.5	0.51	3.1	0.62
Galicia	1,249.2	10.0	0.81	-0.3	-0.02
Madrid, Comunidad de	3,450.2	-7.4	-0.22	56.1	1.65
Murcia, Región de	720.1	2.1	0.29	8.8	1.24
Navarra, Comunidad Foral de	316.3	-1.5	-0.46	2.2	0.70
País Vasco	1,025.0	-9.6	-0.92	7.6	0.74
Rioja, La	155.2	-2.6	-1.63	0.1	0.04
Ceuta	38.5	0.7	1.94	-0.3	-0.73
Melilla	36.8	-2.1	-5.49	-3.6	-8.97

\* Data below 5000 are subject to strong variations, due to sampling error

(:) The variation percentages calculated from low figures with high sampling errors are not significant

## Results by autonomous community and autonomous city

(Conclusion)

	Current quarter	Variation on previous quarter		Variation on same quarter, previous year	
		Difference	Percentage	Difference	Percentage
<b>3. Employed persons</b>					
TOTAL	19,874.3	69.4	0.35	346.3	1.77
Andalucía	3,100.9	-35.0	-1.12	68.1	2.25
Aragón	595.1	8.4	1.44	15.1	2.59
Asturias, Principado de	386.0	1.4	0.35	-8.3	-2.12
Balears, Illes	619.7	41.0	7.08	-1.9	-0.31
Canarias	891.2	-8.5	-0.95	-18.1	-1.99
Cantabria	248.8	4.3	1.76	2.0	0.82
Castilla y León	1,005.0	15.4	1.56	8.0	0.80
Castilla-La Mancha	826.1	5.7	0.69	8.5	1.04
Cataluña	3,462.4	31.3	0.91	68.5	2.02
Comunitat Valenciana	2,102.9	16.7	0.80	43.4	2.11
Extremadura	400.8	5.9	1.49	12.4	3.18
Galicia	1,105.7	6.9	0.63	9.2	0.84
Madrid, Comunidad de	3,096.2	3.1	0.10	104.5	3.49
Murcia, Región de	618.1	-4.0	-0.64	23.0	3.86
Navarra, Comunidad Foral de	290.4	-3.3	-1.12	6.6	2.32
País Vasco	930.0	-15.1	-1.60	8.5	0.92
Rioja, La	141.3	-1.0	-0.68	1.0	0.71
Ceuta	27.4	-1.0	-3.66	0.6	2.19
Melilla	26.1	-2.6	-9.06	-4.6	-14.93

## 4. Unemployed persons

TOTAL	3,214.4	-16.2	-0.50	-111.6	-3.36
Andalucía	865.8	30.3	3.62	-32.4	-3.61
Aragón	63.9	-1.2	-1.83	0.3	0.51
Asturias, Principado de	65.1	1.6	2.53	3.8	6.26
Balears, Illes	55.2	-24.7	-30.88	7.3	15.13
Canarias	239.6	0.3	0.14	17.3	7.78
Cantabria	23.8	-0.4	-1.74	-0.6	-2.44
Castilla y León	126.5	-5.4	-4.09	-0.5	-0.41
Castilla-La Mancha	158.5	-2.7	-1.66	-5.5	-3.33
Cataluña	422.1	-9.2	-2.13	18.4	4.56
Comunitat Valenciana	339.7	-8.3	-2.38	-32.1	-8.64
Extremadura	98.2	-3.4	-3.30	-9.3	-8.63
Galicia	143.5	3.1	2.22	-9.5	-6.21
Madrid, Comunidad de	354.1	-10.5	-2.88	-48.4	-12.03
Murcia, Región de	102.0	6.0	6.29	-14.2	-12.22
Navarra, Comunidad Foral de	25.9	1.8	7.57	-4.4	-14.51
País Vasco	94.9	5.6	6.25	-0.9	-0.98
Rioja, La	14.0	-1.6	-10.31	-0.9	-6.33
Ceuta	11.1	1.8	19.12	-0.9	-7.30
Melilla	10.7	0.5	4.54	1.0	9.91

\* Data below 5,000 are subject to strong variations, due to sampling error

(:) The variation percentages calculated from low figures with high sampling errors are not significant

## Results by autonomous community and autonomous city

(Absolute figures in thousands and rates in percentage)

### 5. Employed and unemployed persons by sex. Activity and unemployment rates

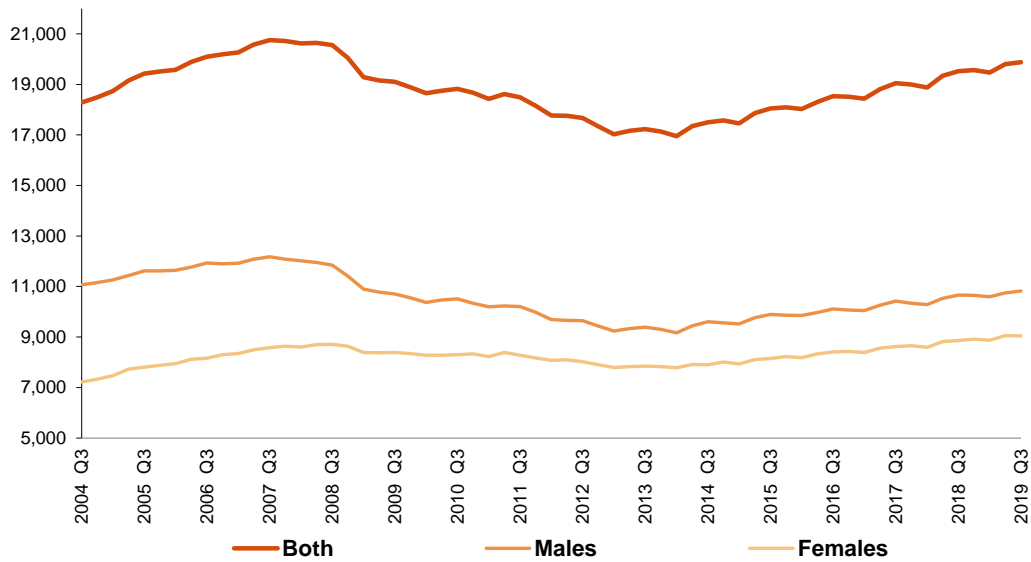
	Both sexes				Males				Females			
	Employed persons	Unemployed persons	Activity rate	Unem. rate	Employed persons	Unemployed persons	Activity rate	Unem. Rate	Employed persons	Unemployed persons	Activity rate	Unem. Rate
TOTAL	19,874.3	3,214.4	58.72	13.92	10,824.5	1,500.5	64.46	12.17	9,049.8	1,713.9	53.28	15.92
Andalucía	3,100.9	865.8	56.85	21.83	1,774.3	398.8	63.67	18.35	1,326.6	467.0	50.33	26.04
Aragón	595.1	63.9	59.69	9.69	327.8	31.1	66.24	8.67	267.4	32.8	53.38	10.92
Asturias, Principado de	386.0	65.1	50.74	14.43	200.0	33.0	55.22	14.17	186.1	32.1	46.69	14.71
Baleares, Illes	619.7	55.2	67.02	8.18	328.0	28.5	71.26	8.00	291.7	26.7	62.83	8.39
Canarias	891.2	239.6	59.50	21.19	490.5	113.3	64.50	18.77	400.7	126.3	54.64	23.96
Cantabria	248.8	23.8	55.19	8.73	134.7	11.9	61.36	8.13	114.2	11.9	49.41	9.42
Castilla y León	1,005.0	126.5	55.35	11.18	557.3	59.6	61.32	9.66	447.7	66.9	49.56	13.00
Castilla-La Mancha	826.1	158.5	58.41	16.10	484.9	67.7	65.46	12.25	341.2	90.9	51.34	21.03
Cataluña	3,462.4	422.1	61.72	10.87	1,822.5	209.5	66.54	10.31	1,639.9	212.6	57.18	11.48
Comunitat Valenciana	2,102.9	339.7	58.42	13.91	1,174.7	151.7	64.94	11.44	928.3	188.0	52.20	16.84
Extremadura	400.8	98.2	55.78	19.68	233.6	42.2	62.42	15.30	167.2	56.0	49.31	25.09
Galicia	1,105.7	143.5	53.48	11.49	584.3	63.7	58.02	9.84	521.3	79.7	49.31	13.27
Madrid, Comunidad de	3,096.2	354.1	62.37	10.26	1,607.6	166.9	67.72	9.41	1,488.6	187.1	57.55	11.17
Murcia, Región de	618.1	102.0	59.08	14.16	352.1	48.9	66.26	12.20	266.0	53.0	52.00	16.62
Navarra, Comunidad Foral de	290.4	25.9	58.86	8.19	157.7	11.2	63.86	6.64	132.8	14.7	54.01	9.96
País Vasco	930.0	94.9	55.85	9.26	487.6	43.9	60.33	8.26	442.5	51.0	51.71	10.34
Rioja, La	141.3	14.0	59.08	8.99	75.1	8.2	64.66	9.80	66.2	5.8	53.72	8.05
Ceuta	27.4	11.1	58.63	28.76	16.6	5.8	67.58	26.05	10.8	5.2	49.49	32.54
Melilla	26.1	10.7	58.41	28.99	15.5	4.5	63.84	22.43	10.7	6.2	53.08	36.76

\* Data below 5,000 are subject to strong variations, due to sampling errors

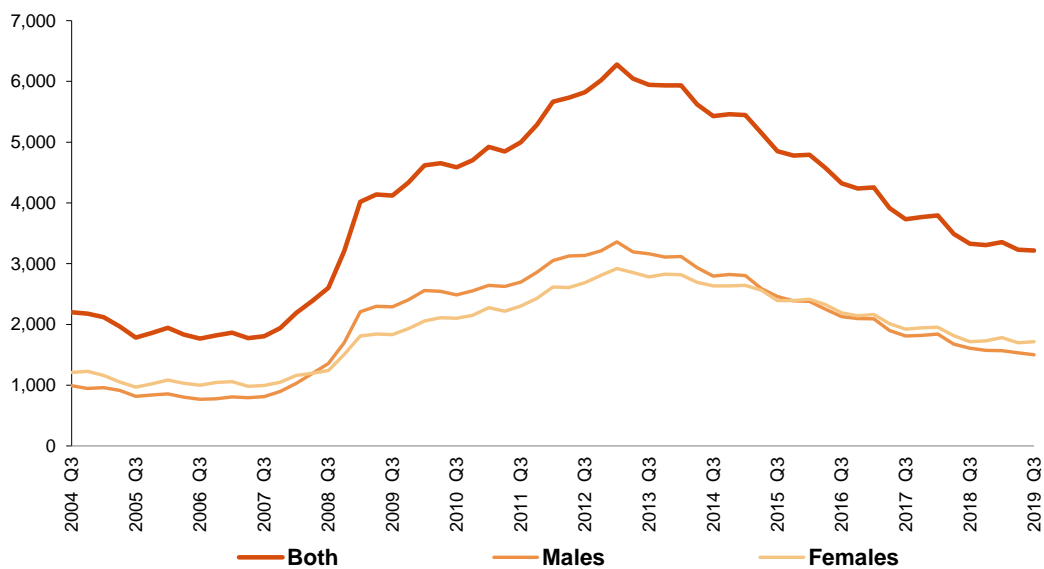
**Employed and Unemployed by sex**  
Third Quarter 2019

EAPS

**Employed.** Thousands



**Unemployed.** Thousands

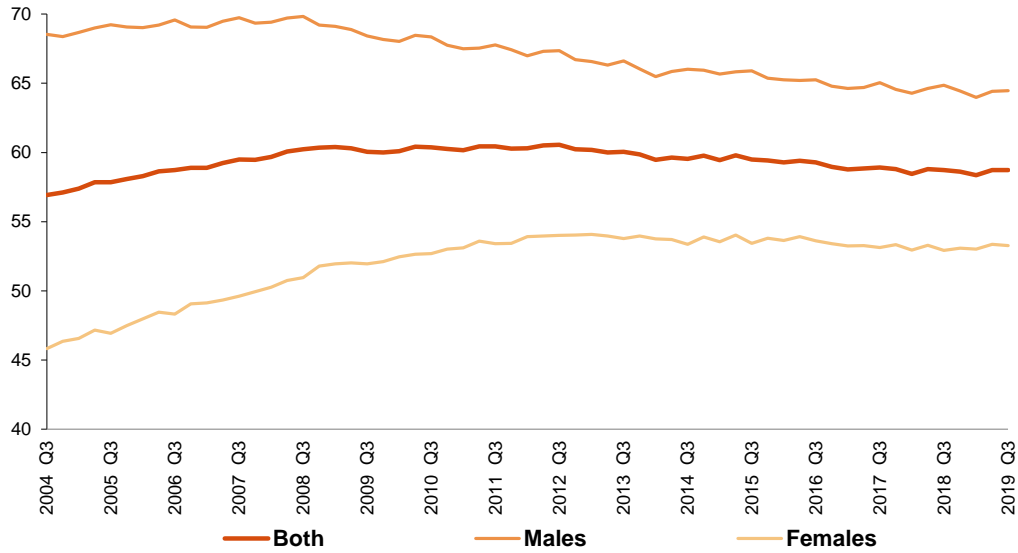




**Activity and unemployment rates by sex**  
Third Quarter 2019

EAPS

**Activity rate. Percentage**



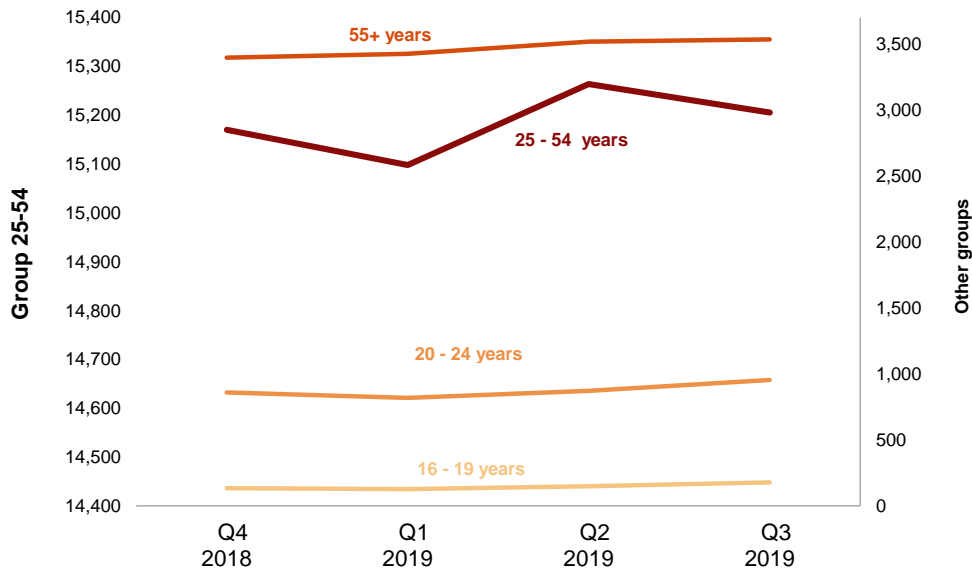
**Unemployment rate. Percentage**



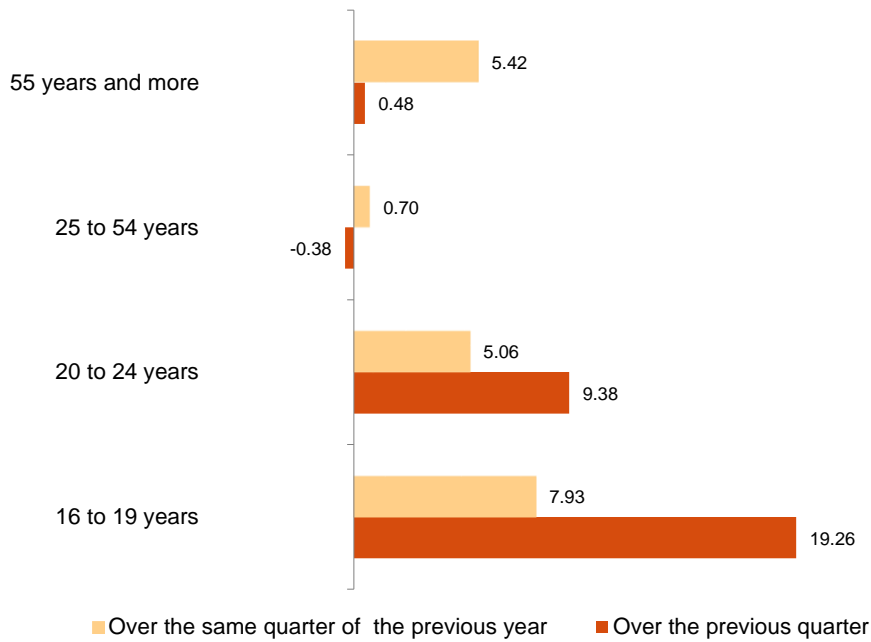
**Employment by age**  
Third Quarter 2019

EAPS

Employment. Thousands



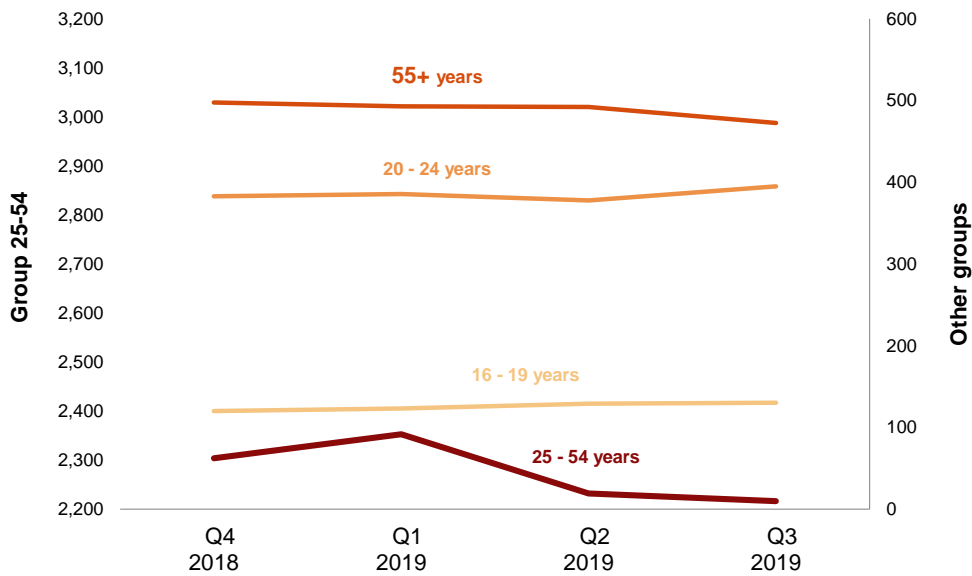
Variation of employment. Thousands



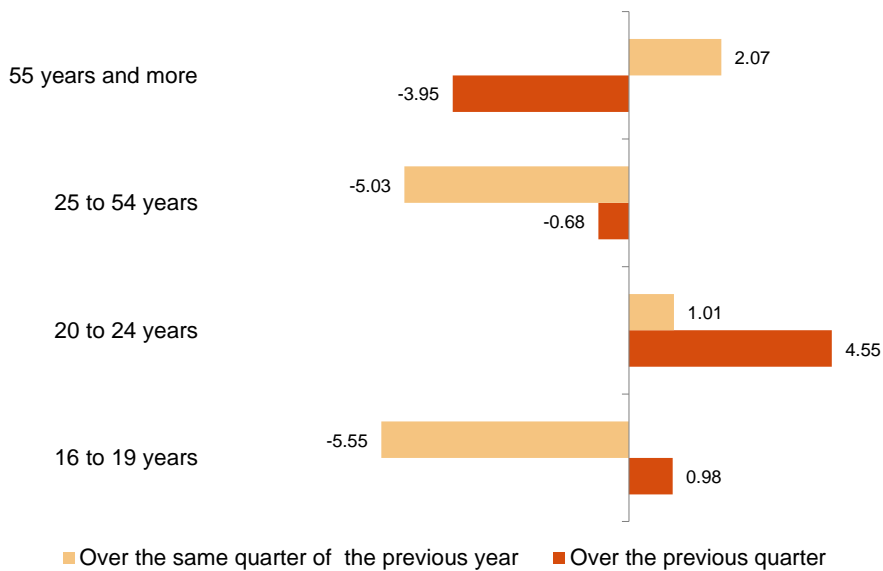
**Unemployment by age**  
Third Quarter 2019

EAPS

**Unemployment.** Thousands



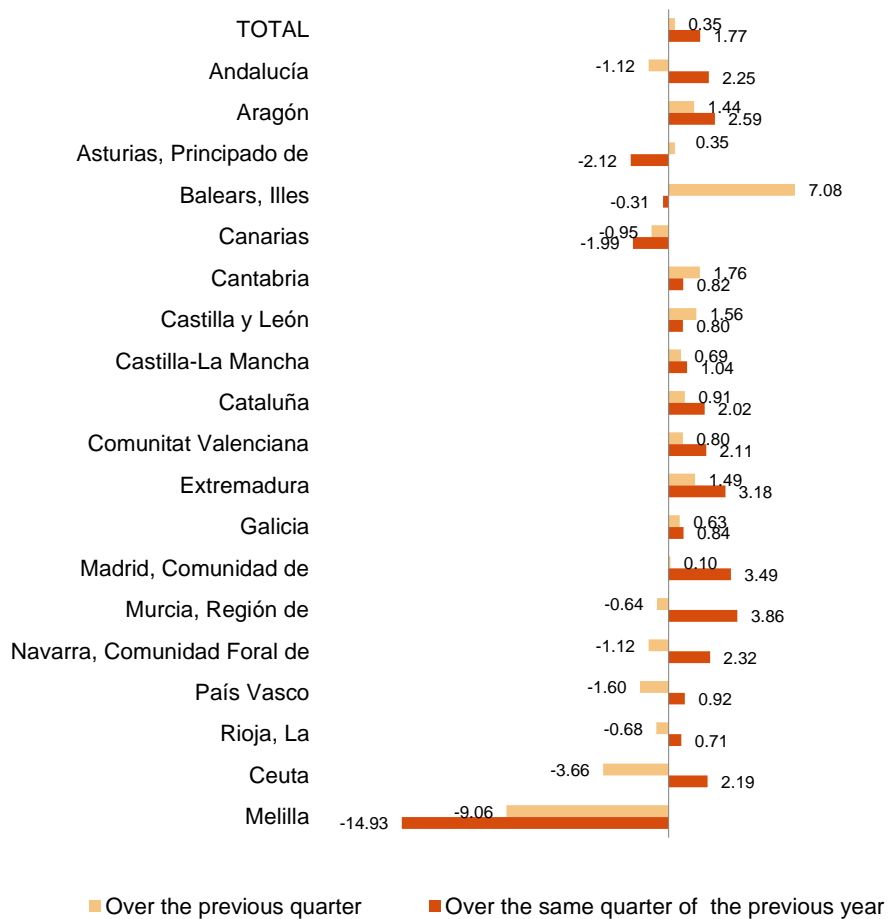
**Variation of unemployment.** Thousands



Third Quarter 2019

EAPS

**Variation of employment.** Percentage



**Unemployment rate** Percentage  
(Spain= 13.92 )

