

27 October 2022

Economically Active Population Survey (EAPS) Third Quarter 2022

Main results

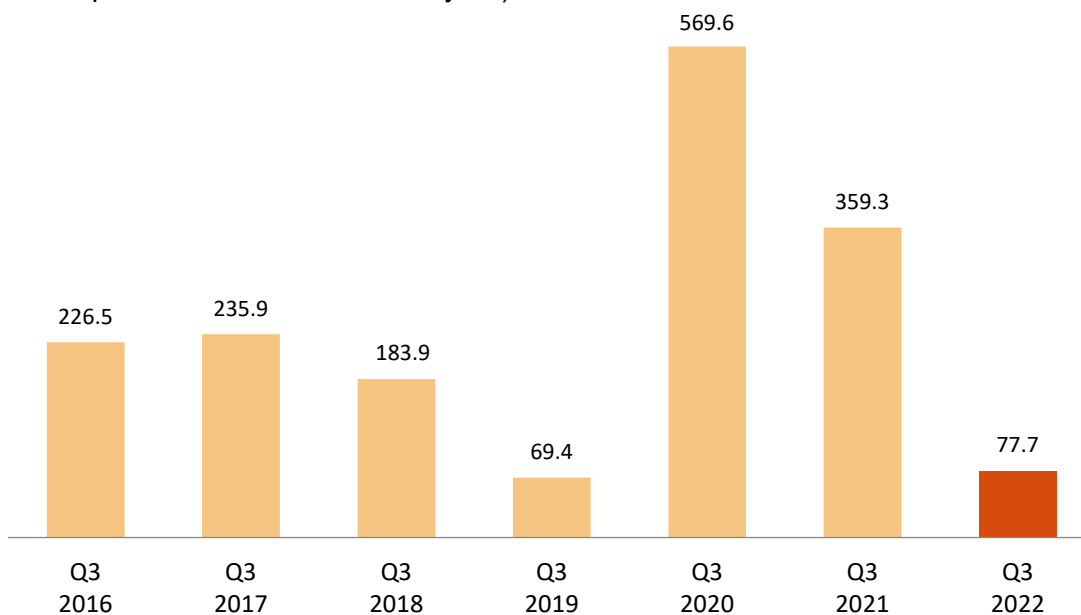
- Employment registered an increase of 77,700 persons in the third quarter of 2022 as compared with the previous quarter (0.38%), standing at 20,545,700 employed persons. In seasonally adjusted terms, the quarterly variation was -0.06%. Employment has grown by 514,700 persons (2.57%) in the last 12 months.
- Employment increased this quarter by 52,300 people in the public sector and 25,400 in the private sector. In the last twelve months, employment has increased by 492,600 persons in the private sector and 22,100 in the public sector.
- Salaried employees increased this quarter by 99,300. The number of wage-earners with a permanent contract has increased by 444,200 persons, while that of wage-earners with temporary contracts has decreased by 344,900 persons. The number of salaried employees increased by 486,700 in the annual rate (permanent employment increased by 1,375,500 persons and temporary employment fell by 888,900). The number of self-employed workers decreased by 30,800 this quarter and it increased by 19,500 in the last 12 months.
- Employment increased this quarter in *Services* (114,300 more employed persons) and in *Industry* (33,100), while it decreased in *Agriculture* (60,300 less) and in *Construction* (-9,400). In annual variation, employment has risen in *Services* (430,400 more), in *Industry* (81,700) and in *Construction* (35,200), while it decreased in *Agriculture* (-32,500).
- The largest increases in the in the economically active population this quarter were registered in Illes Balears (40,400 more) and Cataluña (38,800). The greatest decreases were recorded in Comunidad de Madrid (-64,400) and Región de Murcia (-18,300). In annual variation, the greatest increases occurred in Andalucía (133,000 more) and in Comunitat Valenciana (107,700), and the greatest decreases in the Región de Murcia (-11,800) and the Principado de Asturias (-8,800).
- The number of unemployed persons increased by 60,800 this quarter (2.08%), standing at 2,980,200. In seasonally adjusted terms, the quarterly variation was 0.34%. Over the last 12 months, unemployment has decreased by 436,500 persons (-12.78%).
- The unemployment rate stood at 12.67%, which is 18 hundredths more than the previous quarter. Within the last year, this rate has decreased by 1.90 points.
- By Autonomous Community, the greatest quarterly drops in unemployment occurred in Illes Balears (-22,500) and Castilla y León (-14,400). The greatest increases were registered in Comunidad de Madrid (38,300 more unemployed persons) and Comunitat Valenciana (23,300). In annual terms, the greatest decreases in the number of unemployed persons occurred in Andalucía (141,000 fewer), Canarias (-71,600) and Cataluña (-61,400).
- This quarter, the number of economically active persons increased by 138,500, up to 23,525,900. The activity rate increased by 15 hundredths standing at 58.86%. Over the last year, the economically active population has increased by 78,200 persons.

Employment

The number of employed persons increased by 77,700 persons in the third quarter of 2022 and stood at 20,545,700. The quarterly employment variation rate stood at 0.38%.

The employment rate (percentage of employed persons with respect to the population aged 16 and over) was 51.40%, representing an increase of two hundredths as compared to the previous quarter. In annual variation, the rate rose by 88 hundredths.

Quarterly variation of employment. Thousands.
(Q3 compared with Q2 of the same year)



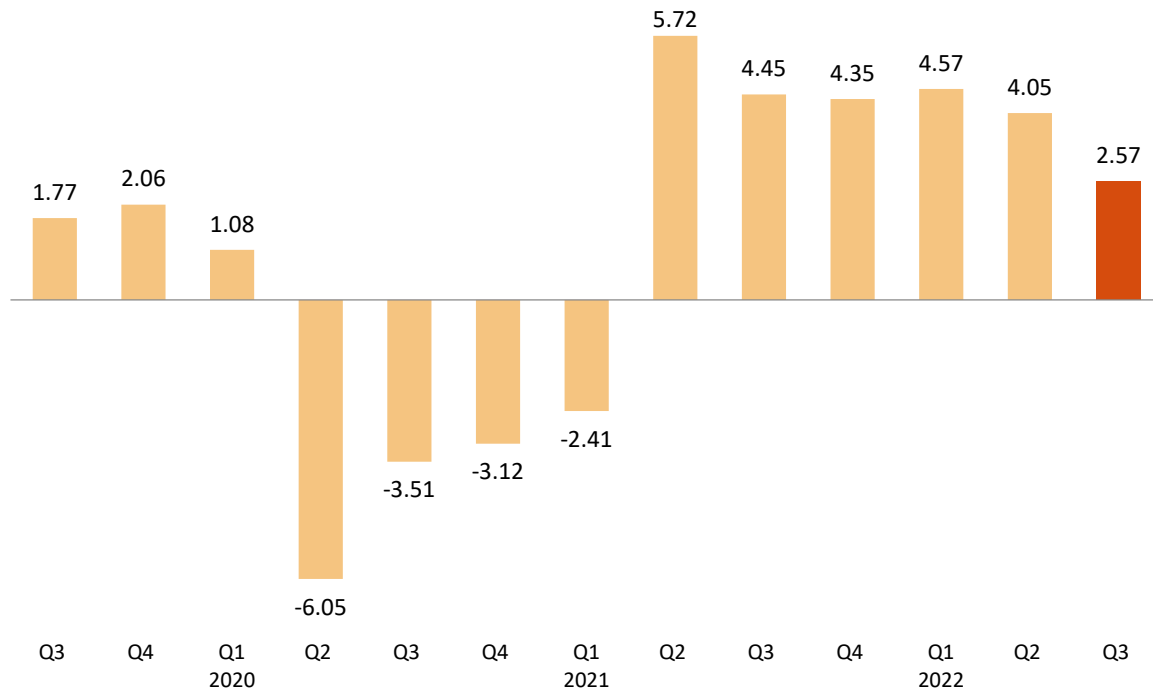
By sex, employment increased this quarter by 138,400 men, while it declined by 60,700 women. By nationality, employment increased by 32,300 persons among Spaniards¹ and by 45,400 among foreign nationals.

By age, employment grew this quarter in the groups of 16 to 19 years old, 30 to 39, 45 to 49 and 55 and over. The largest increase (92,900 more employed persons) occurred among people 55 years of age and above. On the contrary, employment decreased in people between 20 and 29 years old, between 40 and 44 and between 50 and 54 years old. The largest decrease was observed in the 25-54 age group, with 53,700 fewer employed persons.

In the past 12 months, employment has increased by 514,700 persons (332,600 men and 182,200 women). The annual variation rate of employment was 2.57%, with a moderation of 1.48 points compared to the previous quarter.

¹ Includes dual nationality

Annual variation rate of employment. Percentage.



This quarter, employment increased in *Services* (114,300 more people) and *Industry* (33,100). On the other hand, it decreased in *Agriculture* (60,300 fewer) and in *Construction* (-9,400).

In the past year, employment has risen in *Services* (430,400 more employed), in *Industry* (81,700), and in *Construction* (35,200). At the same time, it decreased in *Agriculture* (-32,500).

Full-time employment increased by 273,900 persons this quarter, whilst part-time employment decreased by 196,200. The percentage of persons employed part-time decreased by one point, to 12.76%.

Over the last 12 months, full-time employment has increased by 589,800 persons, while part-time employment fell by 75,100.

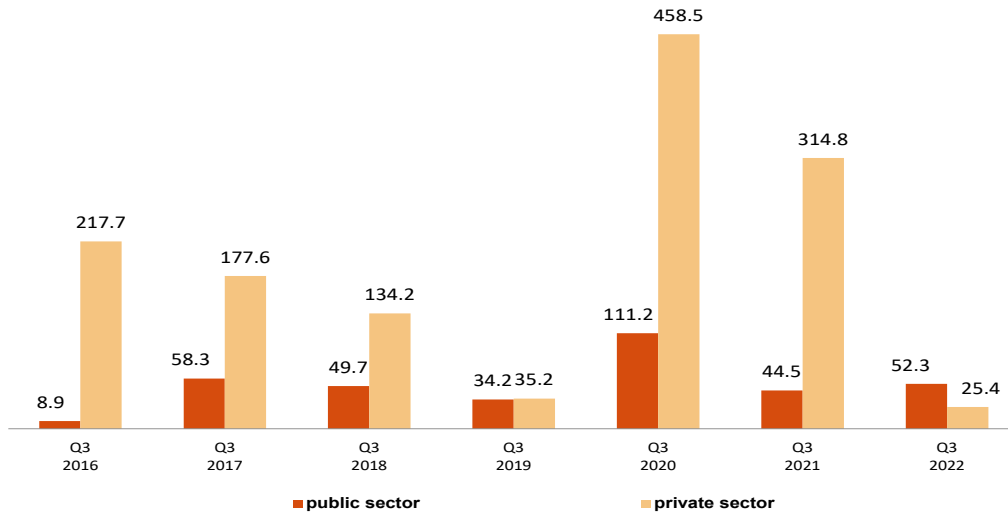
The number of salaried employees increased this quarter by 99,300. The number of wage-earners with a permanent contract has increased by 444,200 persons, while that of wage-earners with temporary contracts has decreased by 344,900 persons. The temporary employment rate decreased 2.11 points, to 20.18%.

Over the last 12 months, the number of salaried employees has increased by 486,700. Permanent employment has increased by 1,375,500, while temporary employment decreased by 888,900.

The number of self-employed persons decreased by 30,800 persons in quarterly variation, and it increased by 19,500 over the past year.

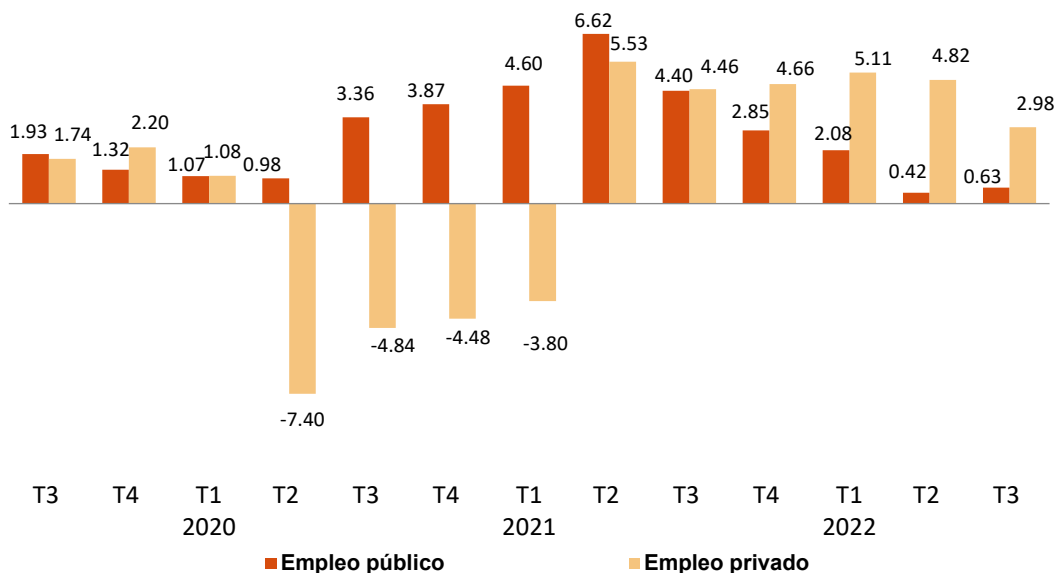
This quarter, private employment² increased by 25,400 persons, standing at 17,039,600. Public employment³ increased by 52,300, to 3,506,200

Quarterly variation of employment by nature of employer. Thousands (Q3 compared with Q2 of the same year)



Employment in the private sector showed an annual variation of 2.98%, while public employment had a variation of 0.63%. In the past twelve months, employment has increased by 492,600 persons in the private sector and by 22,100 in the public sector.

Annual variation rate of employment by nature of employer. Percentage



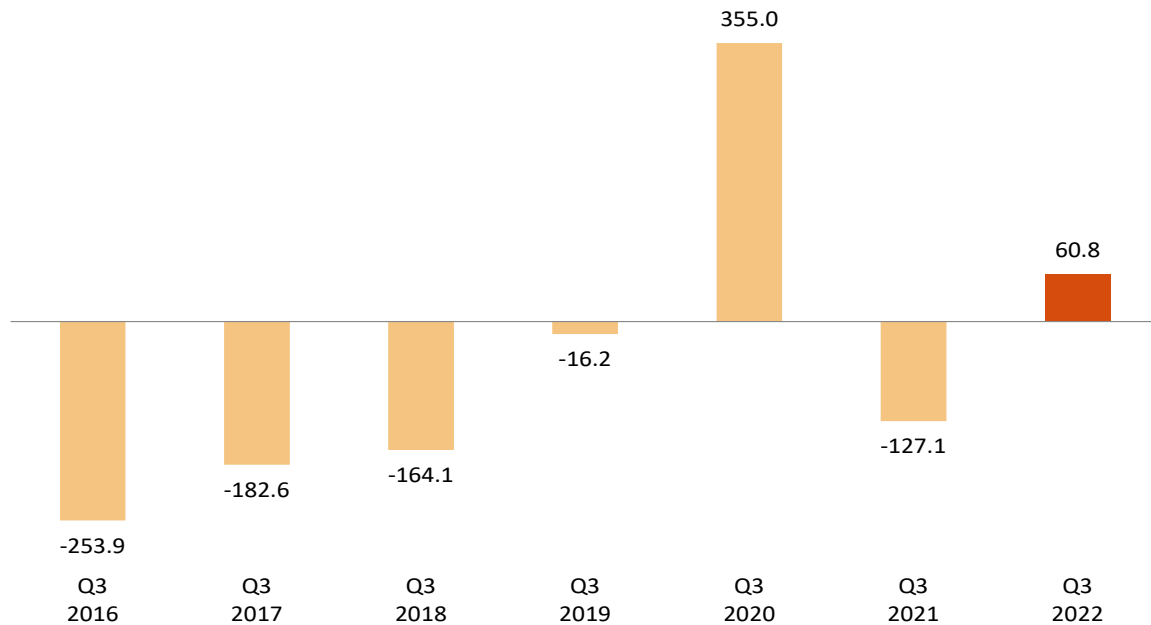
² Employment in the private sector includes: wage-earners from the private sector, employers, independent workers and businesspersons without wage earners, members of a cooperative, family assistance and other professional situations.

³ Public sector employment includes all wage earners in public enterprises and in the National and Regional Administrations, including both workers contributing to Social Security and those affiliated with the Special Civil Service System.

Unemployment and unemployment rate

Unemployment increased by 60,800 persons this quarter. The total number of unemployed persons stood at 2,980,200. In relative terms, the quarterly variation of unemployment was 2.08%.

Quarterly variation of employment. Thousands (Q3 compared with Q2 of the same year)



The unemployment rate increased 18 hundredths and stood at 12.67%. In the last 12 months, this rate has decreased by 1.90 points.

By sex, the number of unemployed men decreased by 18,500 this quarter, standing at 1,336,800. Among women, unemployment increased by 79,300, reaching 1,643,400.

The female unemployment rate increased by 69 hundredths and stood at 14.84%. The male unemployment rate decreased by 25 hundredths and stood at 10.74%.

By age group, declines in unemployment were observed this quarter among people aged 55 and older (-52,800). On the other hand, the number of unemployed persons increased by 71,500 among those under 25 years of age, and by 42,100 among those aged 25 to 54.

By nationality, unemployment increased this quarter by 71,100 among Spaniards while it decreased by 10,300 among foreigners. The unemployment rate of the Spanish population was 11.76%, and that of the foreign population was 18.40%.

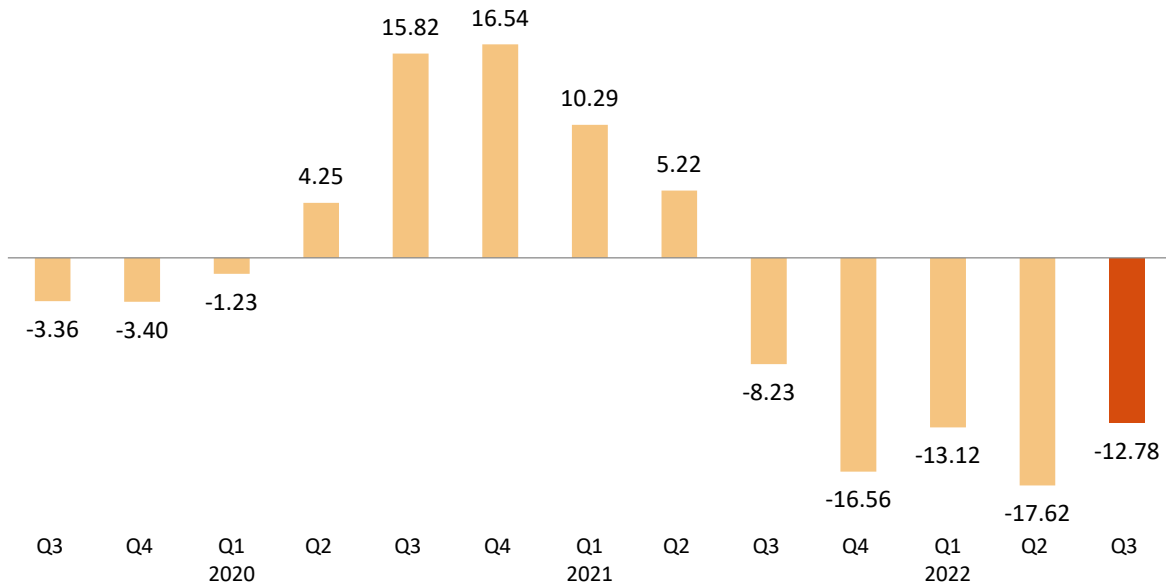
This quarter, unemployment increased in *Services* (85,700 more unemployed), in *Agriculture* (14,400) and in *Industry* (6,400). In turn, it decreased in *Construction* (-14,900).

Unemployment decreased by 81,700 persons among those who lost their job over a year ago and by 50,800 among those who are seeking their first job.

(1)Includes dual nationality

The evolution of unemployment in the annual variation was -12.78%. The total number of unemployed persons has decreased by 436,500 persons in one year, with a decrease of 270,800 for men and 165,700 for women.

Annual variation rate of unemployment. Percentage.



By age, the number of unemployed rose in the last year among those under 25 years of age (15,900 more). On the other hand, it decreased in the last 12 months in the 25 to 54 year old group (313,200 less) and in the group of those 55 and over (139,200 less).

By sector, over the last year, unemployment has fallen in *Construction* (38,300 fewer unemployed persons), *Agriculture* (-35,200), and *Services* (-17,600) and has increased in *Industry* (12,000 more) On the other hand, the number of unemployed persons who lost their jobs over a year ago has decreased by 365,100 and that of unemployed persons looking for their first job has risen by 7,700.

Economically active population and activity rate

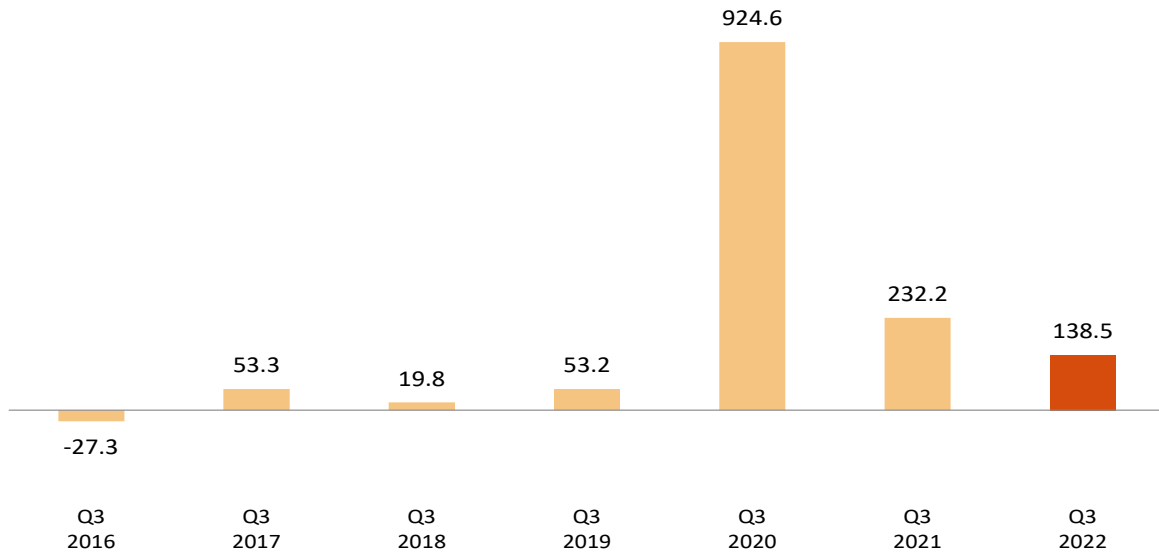
The economically active population experienced an increase of 138,500 persons in the third quarter of this year, standing at 23,525,900. The number of economically active men increased by 119,900, and that of women by 18,600.

By nationality, the number of economically active persons increased in this quarter by 103,300 among Spaniards¹ and 35,200 among foreign nationals.

The economic activity rate increased 15 hundredths, reaching 58.86%. For men, the rate rose by 45 hundredths standing at 64.19%. For women, it fell by 14 hundredths to 53.84%.

⁽¹⁾Includes dual nationality

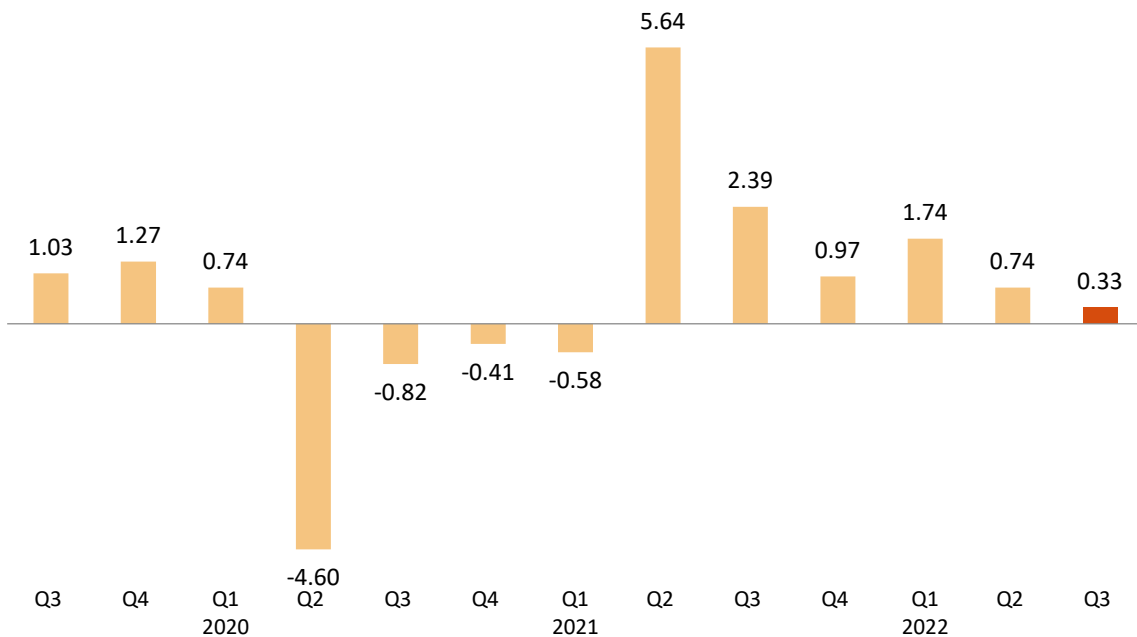
Quarterly variation of activity. Thousands
(Q3 compared with Q2 of the same year)



The economic activity rate of Spaniards⁽¹⁾ increased 25 hundredths as compared with the previous quarter, standing at 57.51%. For foreigners it fell by 85 hundredths to 69.06%. The difference of almost 11.55 points between both rates is mainly explained by the different age structures for both populations.

In annual terms, the economically active population has increased by 78,200 persons. The annual variation rate of economically active persons was 0.33%.

Annual variation rate of activity. Percentage.



⁽¹⁾Includes dual nationality

Households

The number of households increased by 50,100 this quarter, standing at 19,130,300. Of these, 5,302,300 were single-person households.

Households in which all economically active members were unemployed decreased by 12,900 this quarter, reaching a total of 977,400. Of these, 297,100 were single-person households.

On the other hand, the number of households in which all of the economically active members were employed increased by 47,100, standing at 11,294,200. Of these, 2,338,700 were single-person households.

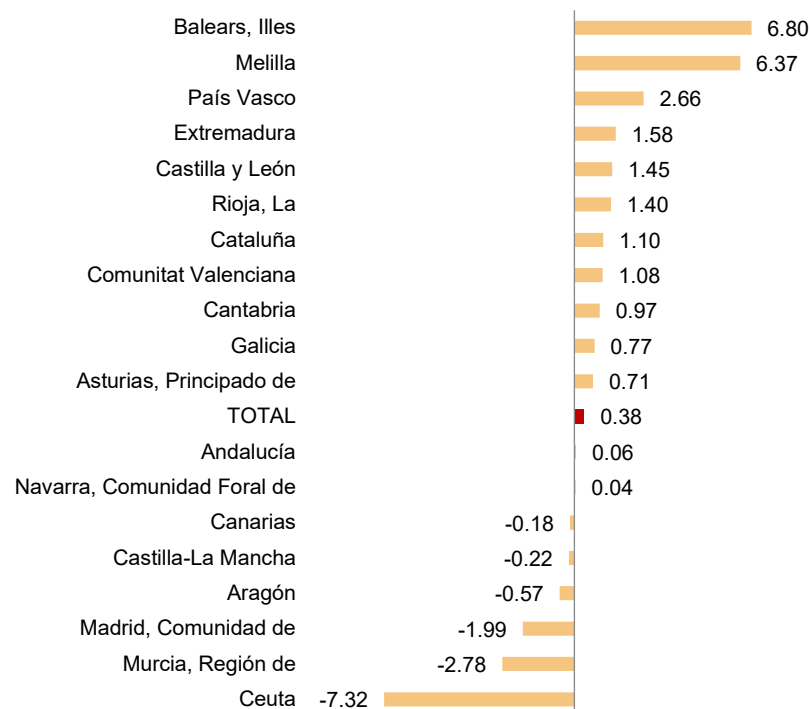
In annual comparison, the number of households with at least one economically active member in which those members were unemployed has decreased by 144,700, while those where all active members were employed has increased by 495,300.

Results by Autonomous Communities⁴

The largest increases in the in the economically active population this quarter were registered in Illes Balears (41,700 more), Cataluña (38,800) and País Vasco (24,900). The greatest decreases were recorded in Comunidad de Madrid (-64.400) and Región de Murcia (-18, 300).

In relative terms, the Autonomous Communities with the greatest annual increase in employment were Illes Balears (6.80%), País Vasco (2.66%) and Extremadura (1.58%).

Quarterly variation rate of employment by autonomous community. Percentage.



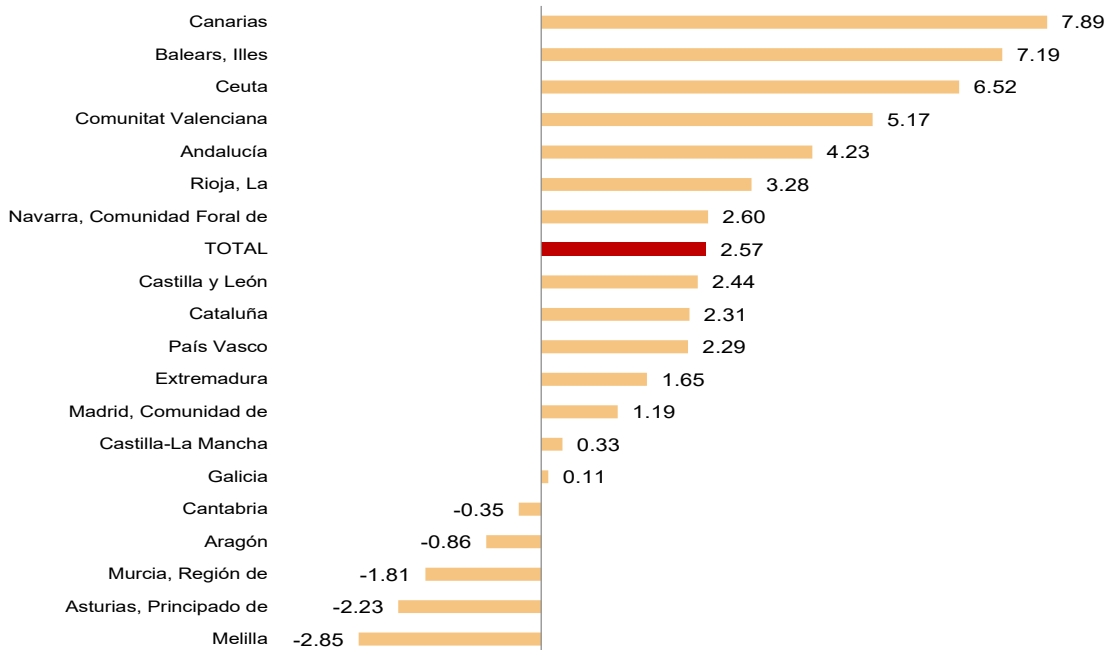
In the last year, employment increased in the majority of communities. The greatest increases took place in Andalucía (133,000 more), Comunitat Valenciana (107,700) and

⁴ As with the rest of the EAPS data, employment results in this section are presented according to the Autonomous Community where the persons interviewed in the survey reside, and not according to where their workplace is.

Cataluña (80,400). On the other hand, employment decreased over the last 12 months in Región de Murcia (-11,800), Principado de Asturias (-8,800) and Aragón (-5,100).

In relative terms, the greatest increases in employment occurred in Canarias (7.89%), Illes Balears (7.19%) and Comunitat Valenciana (5.17%). Principado de Asturias (-2.23%) and Región de Murcia (-1.81%) had the most negative rates.

Annual variation rate of employment by autonomous community. Percentage.



The greatest quarterly drops in unemployment occurred in Illes Balears (-22,500) and Castilla y León (-14,400). On the other hand, the greatest increases were registered in Comunidad de Madrid (38,300 more unemployed persons), Comunitat Valenciana (23,300) and Región de Murcia (17,600).

In annual terms, the greatest decreases in the number of unemployed persons occurred in Andalucía (-141,000), Cataluña (-71,600) and Comunitat Valenciana (-61,400). On the other hand, the greatest increases over the last 12 months were observed in Galicia (8,100 more unemployed people), Aragón (1,500) and Principado de Asturias (1,200).

Illes Balears (5.79%), La Rioja (8.03%) and País Vasco (8.29%) registered the lowest unemployment rates this quarter. At the other end of the scale, Andalucía (18.98%), Canarias (17.73%) and Extremadura (15.85%) showed the highest rates.

The greatest increases in the activity rate this quarter occurred in Comunitat Valenciana (46,600 more active), and Cataluña (43,600). The greatest decreases were observed in Comunidad de Madrid (26,100 less), Aragón (-2,800) and Canarias (-2,600).

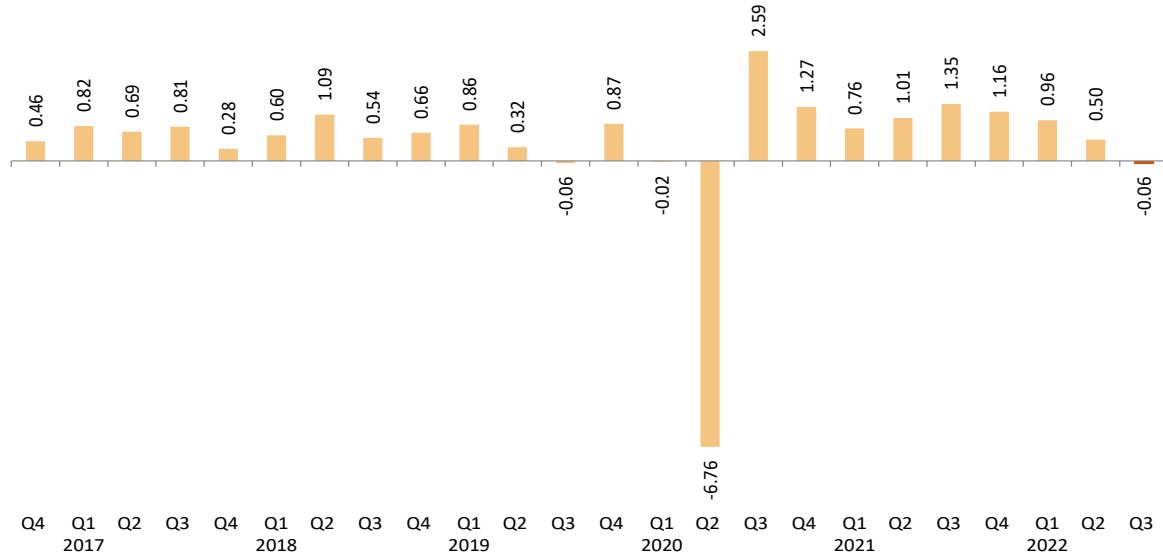
In the last 12 months, Comunitat Valenciana (49,100 more economically active persons), Comunidad de Madrid (21,400) and Cataluña (19,000) registered the greatest increases in the number of economically active persons. In turn, the greatest decreases were observed in Región de Murcia (14,800 less), Andalucía (-8,000) and Principado de Asturias (-7,600).

This quarter, the activity rates fluctuated between 66.77% for Illes Balears and 50.02% for Principado de Asturias.

Seasonally adjusted series

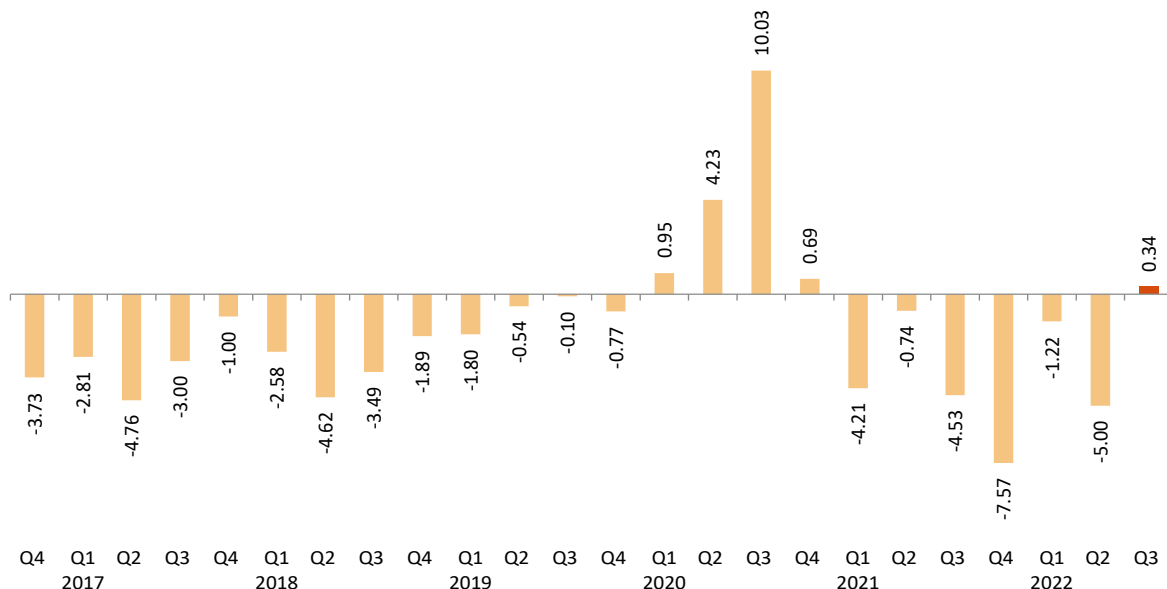
In the third quarter of 2022, the quarterly employment variation rate, adjusted for seasonal effects, was -0.06%.

Quarterly variation rate of seasonally adjusted employment. Percentage.



In regarding to the seasonally-adjusted unemployment results, an increase of 0.34% was observed.

Quarterly variation rate of seasonally adjusted unemployment. Percentage



As explained in the methodology used for seasonal adjustment, the seasonal adjustment model is maintained for a year, with the first quarters corresponding to the time of the model's re-identification, but the coefficients are recalculated quarterly, so that each quarter the previous results are reviewed (either by re-identification or by revision of coefficients) and therefore the latest series available must always be consulted.

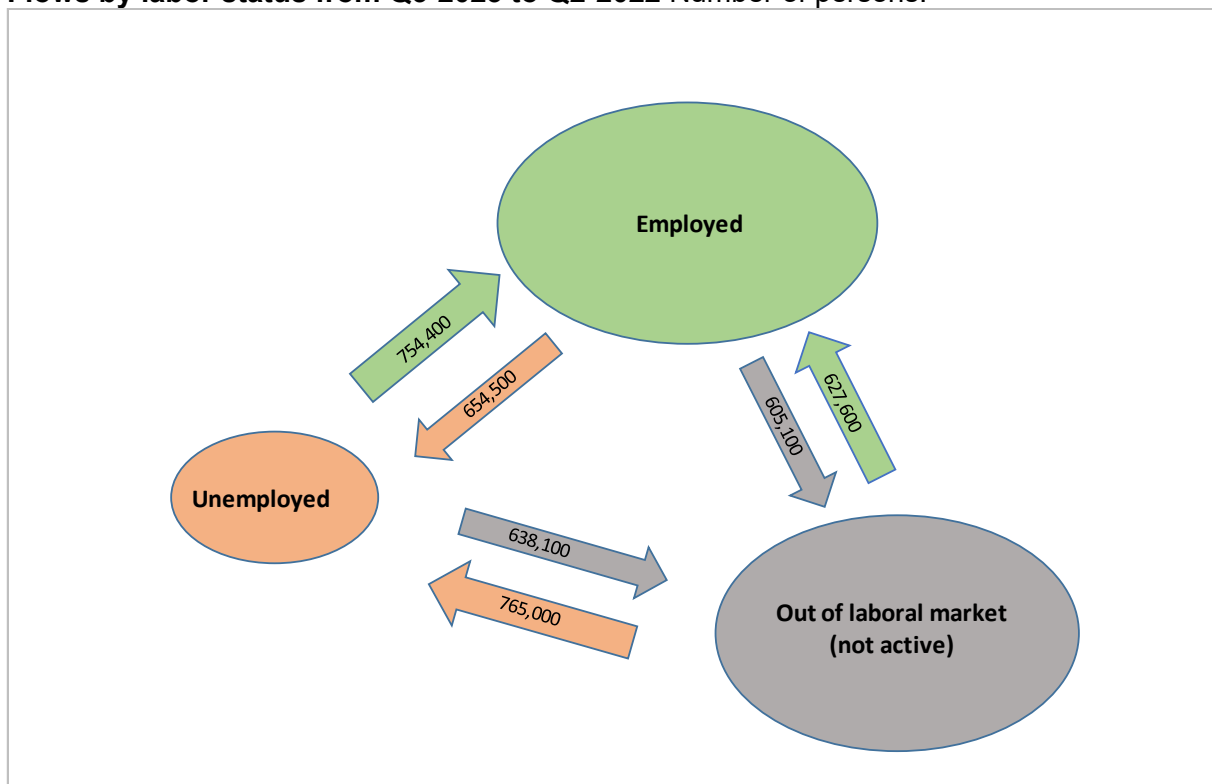
The series of the quarterly variation rates of the seasonally adjusted results of employment and unemployment since 2005 and the description of the method used can be found in:

http://www.ine.es/daco/daco42/daco4211/epa_desestacional.xlsx

Flows in absolute values with respect to the previous quarter⁵

In this quarter there has been an increase in employment outflows compared with the previous quarter, both towards unemployment and towards an inactive situation. An increase in the incorporation of economically inactive people can also be observed in the quarter prior to unemployment in this quarter.

Flows by labor status from Q3-2023 to Q2-2022 Number of persons.

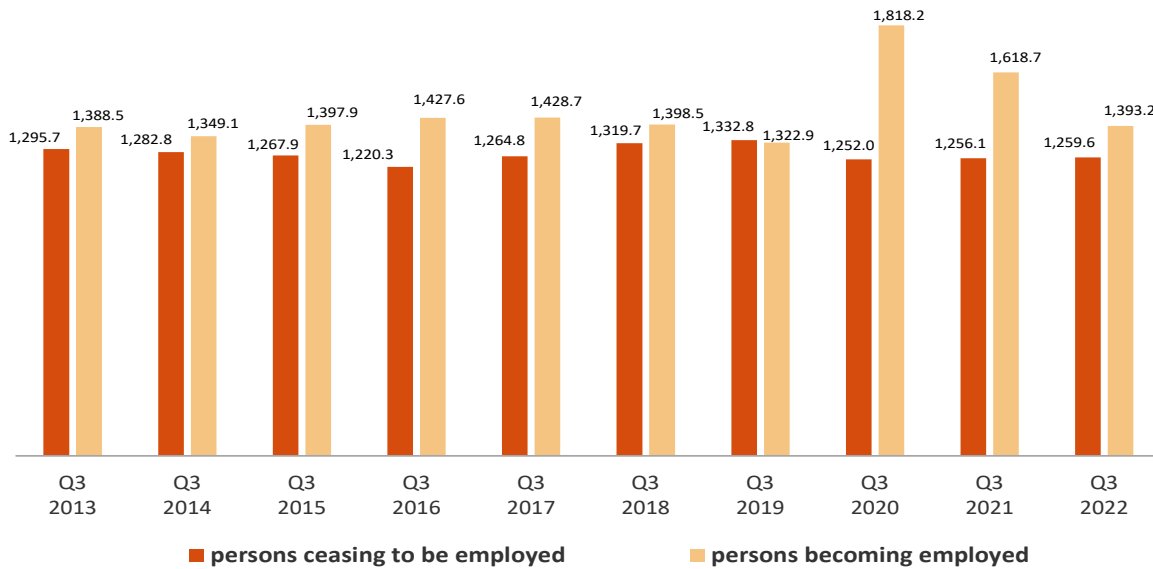


The total inflow into employment in the third quarter of 2022 was 1,393,200 people, 225,500 less than in the same quarter of the previous year.

However, the outflow from employment was 1,259,600 people, which is 3,500 more than in the same quarter of 2021.

⁵ This section compiles the results of the Economically Active Population Flow Statistics. Due to the methodology used in preparation, the results might not match the net balances of quarterly EAPS. The differences are caused by the "no data recorded" groups (persons turning 16 years old in the change between one quarter and the next and those who did not live in Spain in the previous quarter).

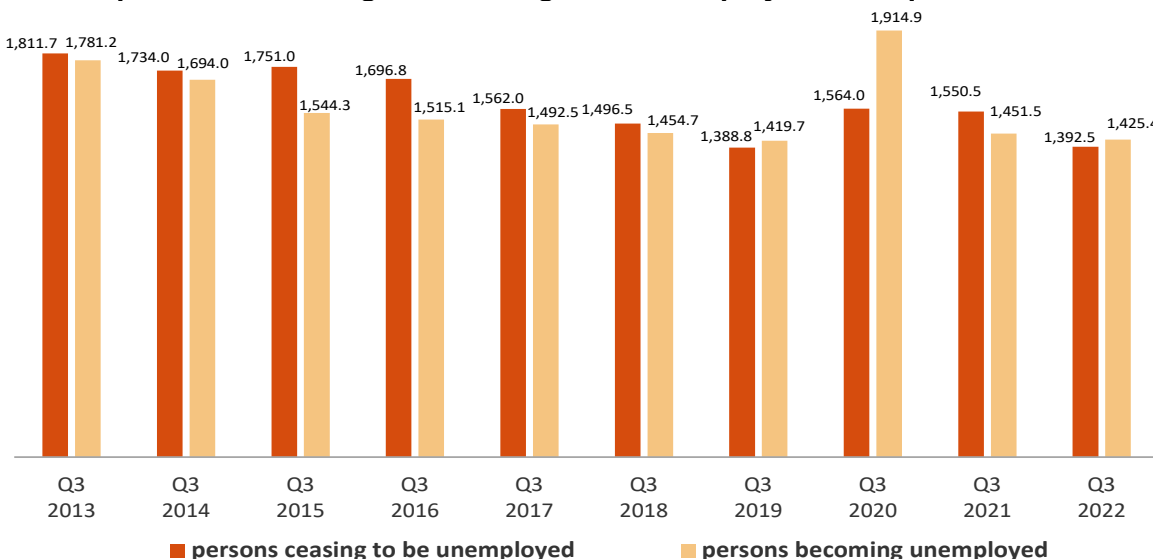
Flows of persons becoming and ceasing to be employed each quarter. Thousands



The number of persons who were unemployed three months ago but are not currently unemployed stood at 1,392,500, which is 158,000 fewer persons than in the same period in 2021.

However, the total inflow to unemployment reached 1,425,400 people, which is 26,100 fewer persons than in the same quarter of 2021.

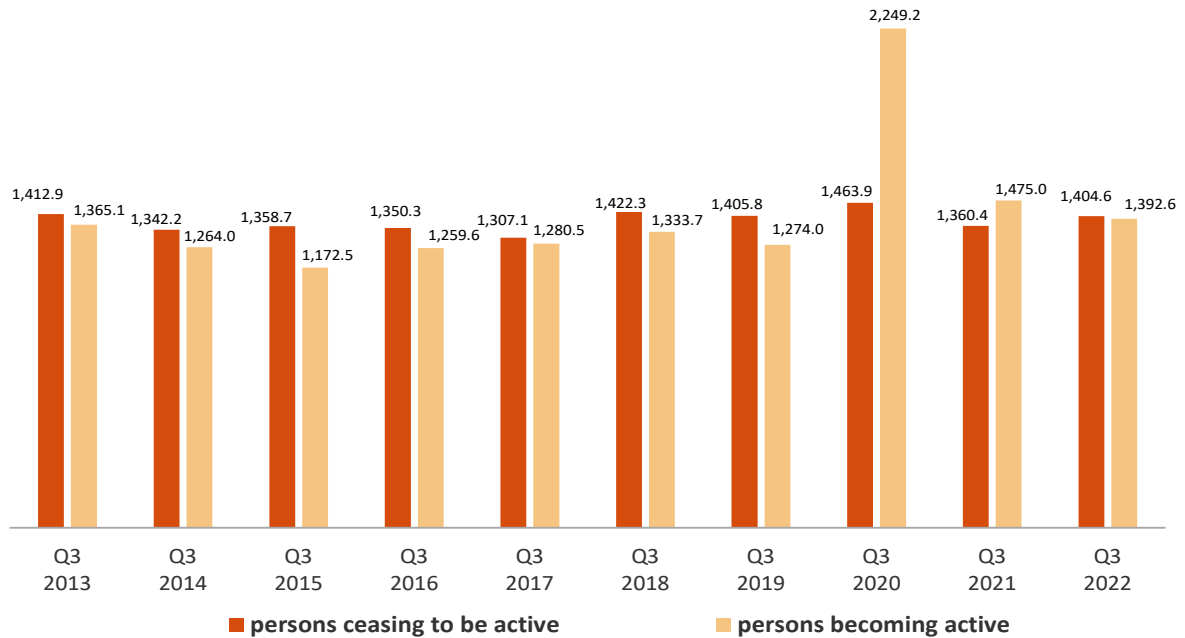
Flows of persons becoming and ceasing to be unemployed each quarter. Thousands.



The inflow into activity in this third quarter was 1,392,600, a figure 82,400 lower than that of the same period in 2021.

Meanwhile, a total of 1,404,600 people have left the activity this quarter, compared to 1,360,400 who did so during the same quarter in the previous year (that is, 44,200 more).

Flows of persons becoming and ceasing to be active each quarter. Thousands.



The outflow from employment to inactivity of people aged 60 and over was 113,500 this quarter. This figure is 700 persons lower than the one observed in the same period of 2021.

The number of people under 25 who have entered employment directly from inactivity this quarter stood at 295,000, a figure 13,100 persons, higher than that observed in the same quarter of 2021.

The flow data on which these comments are based can be found in the annex to this press release <http://www.ine.es/daco/daco42/daco4211/epaflu0322.xlsx>

EAPS results by province

The provincial results summary of the EAPS may be accessed via the following link:

<http://www.ine.es/daco/daco42/daco4211/epapro0322.pdf>

All the provincial information can also be accessed from the INEbase database:

<http://www.ine.es/dynt3/inebase/index.html?padre=996>

Data Review and Update

The data published today are final. All results are available on INEBase.

Methodological note

The Labour Force Survey (EAPS) has been carried out since 1964. The methodology currently used was put in place in 2021, and adapts the previous methodology (begun in 2005) to the new regulations of the European Labour Force Survey.

It is a continuous, quarterly research addressed to families, whose main purpose is to obtain data on the labour force and its various categories (employed, unemployed), as well as on the population outside the labour market (inactive).

As of the third quarter of 2009, the survey includes an additional sample in Galicia that is collected by the Galician Statistics Institute (IGE) using the same fieldwork system and methodology as the INE.

Type of survey: quarterly continuous survey.

Population scope: population residing in family dwellings.

Geographical scope: the entire national territory.

Reference period of the results: the quarter.

Reference period of the information: the week before the interview.

Sample size: 3,822 census tracts, around 65,000 dwellings and 160,000 people. Of the 3,822 tracts, 234 correspond to the additional sample of Galicia.

Gradually the number of sections will increase to a total of 5,298 in 2024, of which 288 correspond to the additional sample from Galicia. The number of homes selected per section will go from an average of 20 to 14.

Type of sampling: Two-stage sampling with stratification in the first stage units. The first stage units are the census tracts and the second stage units are the inhabited family dwellings.

Collection method: personal, telephone, and web interview.

For more information, the methodology and technical details of the survey design and data quality assessment can be accessed at:

https://www.ine.es/dynqs/INEbase/es/operacion.htm?c=Estadistica_C&cid=1254736176918&menu=metodologia&idp=1254735976595

The standardized methodological report is at:

<https://www.ine.es/dynt3/metadatos/es/RespuestaDatos.html?oe=30308>

INE statistics are produced in accordance with the Code of Good Practice for European Statistics, which is the basis for the institution's quality policy and strategy. Para más información, véase la sección de [Calidad en el INE y Código de Buenas Prácticas](#) en la página web del INE

The Statistics on Economically Active Population Flows (EAPFS) collect information regarding the follow-up of the population, or specific groups thereof, between one quarter and the previous one in absolute values, regarding its relation with labour market. This information links the interviewee's situations in two moments of time on the basis of the EAPS in order to study its evolution.

Given that in the EAPS sample one sixth is renewed each quarter and the remaining 5/6 parts are kept fixed between two consecutive quarters, the common part of the sample between the two conducts of the survey is used to obtain flow statistics from the questions relating to the situation in which the interviewee was in the current and previous quarters.

Type of survey: quarterly exploitation of the common EAPS sample between consecutive quarters that provides estimates in absolute values of the relation with the activity in the current period compared with that of the previous quarter.

Population scope: population residing in family dwellings.

Geographical scope: the entire national territory.

Reference period of the results: the quarter.

Reference period of the information: the week before the interview.

Sample size: 3,822 census tracts. The common EAPS sample between consecutive quarters is approximately 100,000 people aged 16 and older. Gradually the number of sections will increase to a total of 5,298 in 2024, of which 288 correspond to the additional sample from Galicia. The number of homes selected per section will go from an average of 20 to 14.

Type of sampling: Two-stage sampling with stratification in the first stage units. The first stage units are the census tracts and the second stage units are the inhabited family dwellings.

Collection method: personal and telephone interview.

For more information the methodology can be accessed at:

https://www.ine.es/inebaseDYN/flujos30310/docs/metoflujos_valores_absolutos.pdf

The standardized methodological report is at:

<https://www.ine.es/dynt3/metadatos/es/RespuestaDatos.html?oe=30310>

For further information see **INEbase:** www.ine.es/en/ Twitter: [@es_ine](https://twitter.com/es_ine)

All press releases at: www.ine.es/en/prensa/prensa_en.htm

Press Office: Telephone numbers: (+34) 91 583 93 63 /94 08 – gprensa@ine.es

Information Area: Telephone number: (+34) 91 583 91 00 – www.ine.es/infoine/?L=1

Economically Active Population Survey Third Quarter 2022

National results

(Absolute figures in thousands and rates in percentage)

	Current quarter	Variation on previous quarter		Variation on same quarter, previous year	
		Difference	Percentage	Difference	Percentage
1. Population aged 16 years and over by sex and labour status					
BOTH SEXES					
Population aged 16 years and over	39,969.1	136.0	0.34	319.8	0.81
Active population	23,525.9	138.5	0.59	78.2	0.33
- Employed persons	20,545.7	77.7	0.38	514.7	2.57
- Unemployed persons	2,980.2	60.8	2.08	-436.5	-12.78
Inactive population	16,443.2	-2.5	-0.01	241.6	1.49
Activity rate	58.86	0.15	-	-0.28	-
Unemployment rate	12.67	0.18	-	-1.90	-
Population aged 16 to 64 years	30,683.5	92.9	0.30	148.8	0.49
Activity rate (16-64)	75.59	0.17	-	-0.24	-
Unemployment rate (16-64)	12.78	0.20	-	-1.90	-
Employment rate (16-64)	65.93	-0.01	-	1.23	-
MALES					
Population aged 16 years and over	19,399.8	49.7	0.26	132.5	0.69
Active population	12,451.8	119.9	0.97	61.8	0.50
- Employed persons	11,115.0	138.4	1.26	332.6	3.08
- Unemployed persons	1,336.8	-18.5	-1.37	-270.8	-16.84
Inactive population	6,948.0	-70.2	-1.00	70.7	1.03
Activity rate	64.19	0.45	-	-0.12	-
Unemployment rate	10.74	-0.25	-	-2.24	-
Population aged 16 to 64 years	15,307.7	29.9	0.20	53.4	0.35
Activity rate (16-64)	80.11	0.53	-	-0.02	-
Unemployment rate (16-64)	10.84	-0.22	-	-2.23	-
Employment rate (16-64)	71.43	0.65	-	1.77	-
FEMALES					
Population aged 16 years and over	20,569.3	86.4	0.42	187.3	0.92
Active population	11,074.1	18.6	0.17	16.4	0.15
- Employed persons	9,430.7	-60.7	-0.64	182.2	1.97
- Unemployed persons	1,643.4	79.3	5.07	-165.7	-9.16
Inactive population	9,495.2	67.7	0.72	170.9	1.83
Activity rate	53.84	-0.14	-	-0.41	-
Unemployment rate	14.84	0.69	-	-1.52	-
Population aged 16 to 64 years	15,375.8	63.0	0.41	95.5	0.62
Activity rate (16-64)	71.08	-0.19	-	-0.45	-
Unemployment rate (16-64)	14.95	0.69	-	-1.53	-
Employment rate (16-64)	60.45	-0.65	-	0.71	-
2. Spanish population⁽¹⁾ aged 16 years and over by labour status					
SPANISH POPULATION AGED 16 YEARS AND OVER	35,297.5	28.7	0.08	98.8	0.28
Active population	20,299.6	103.3	0.51	-23.2	-0.11
- Employed persons	17,912.9	32.3	0.18	327.6	1.86
- Unemployed persons	2,386.7	71.1	3.07	-350.7	-12.81
Inactive population	14,997.9	-74.7	-0.50	122.0	0.82
Activity rate	57.51	0.25	-	-0.23	-
Unemployment rate	11.76	0.29	-	-1.71	-

⁽¹⁾ including dual nationality

27 October 2022

National results

(Absolute figures in thousands and rates in percentage)

	Current quarter	Variation on previous quarter		Variation on same quarter, previous year	
		Difference	Percentage	Difference	Percentage
3. Foreign population aged 16 years and over by labour status					
FOREIGN POPULATION AGED 16 YEARS AND OVER	4,671.6	107.4	2.35	221.0	4.97
Active population	3,226.3	35.2	1.10	101.4	3.24
- Employed persons	2,632.8	45.4	1.76	187.2	7.65
- Unemployed persons	593.5	-10.3	-1.70	-85.8	-12.63
Inactive population	1,445.3	72.2	5.26	119.7	9.03
Activity rate	69.06	-0.85	-	-1.15	-
Unemployment rate	18.40	-0.52	-	-3.34	-

4. Employed persons by sex, age group and economic sector

BOTH SEXES	20,545.7	77.7	0.38	514.7	2.57
16 to 19 years	181.9	30.1	19.82	-2.6	-1.40
20 to 24 years	1,019.3	-3.0	-0.30	45.3	4.65
25 to 29 years	1,744.2	-53.7	-2.99	60.5	3.59
30 to 34 years	2,100.5	9.0	0.43	68.6	3.38
35 to 39 years	2,377.0	5.6	0.23	-51.7	-2.13
40 to 44 years	2,976.2	-11.7	-0.39	-58.6	-1.93
45 to 49 years	3,170.0	10.0	0.32	111.5	3.64
50 to 54 years	2,785.1	-1.3	-0.05	47.3	1.73
55 and over	4,191.7	92.9	2.27	294.4	7.55
MALES	11,115.0	138.4	1.26	332.6	3.08
16 to 19 years	98.7	16.6	20.22	2.4	2.51
20 to 24 years	576.8	21.0	3.78	51.2	9.74
25 to 29 years	939.4	-5.2	-0.56	80.8	9.41
30 to 34 years	1,106.9	21.4	1.97	39.2	3.67
35 to 39 years	1,258.1	14.0	1.13	-29.4	-2.28
40 to 44 years	1,586.7	-9.9	-0.62	-21.2	-1.32
45 to 49 years	1,711.2	-5.9	-0.34	31.3	1.86
50 to 54 years	1,529.4	15.0	0.99	26.3	1.75
55 and over	2,307.9	71.5	3.20	152.0	7.05
FEMALES	9,430.7	-60.7	-0.64	182.2	1.97
16 to 19 years	83.2	13.5	19.36	-5.0	-5.66
20 to 24 years	442.4	-24.0	-5.15	-5.9	-1.31
25 to 29 years	804.8	-48.5	-5.68	-20.3	-2.46
30 to 34 years	993.6	-12.3	-1.23	29.4	3.05
35 to 39 years	1,118.9	-8.5	-0.75	-22.3	-1.96
40 to 44 years	1,389.5	-1.8	-0.13	-37.4	-2.62
45 to 49 years	1,458.8	15.9	1.10	80.2	5.82
50 to 54 years	1,255.7	-16.3	-1.28	21.0	1.70
55 and over	1,883.8	21.4	1.15	142.4	8.18
TOTAL EMPLOYED PERSONS	20,545.7	77.7	0.38	514.7	2.57
Agriculture	729.0	-60.3	-7.64	-32.5	-4.27
Industry	2,809.8	33.1	1.19	81.7	2.99
Construction	1,328.8	-9.4	-0.70	35.2	2.72
Services	15,678.2	114.3	0.73	430.4	2.82

National results

(Absolute figures in thousands)

	Current quarter	Variation on previous quarter		Variation on same quarter, previous year	
		Difference	Percentage	Difference	Percentage

5. Employed persons by professional status, type of contract, public / private sectors and working hours

TOTAL EMPLOYED PERSONS	20,545.7	77.7	0.38	514.7	2.57
BY PROFESSIONAL STATUS					
Self-employed persons	3,121.5	-30.8	-0.98	19.5	0.63
- Employers	981.3	-23.4	-2.33	33.9	3.58
- Independent workers	2,028.1	-14.0	-0.68	-19.8	-0.96
- Cooperative members	23.7	-4.0	-14.55	-3.5	-12.88
- Family workers	88.4	10.6	13.59	8.8	11.09
Employees	17,403.2	99.3	0.57	486.7	2.88
- With a permanent job	13,890.8	444.2	3.30	1,375.5	10.99
- With a temporary job	3,512.4	-344.9	-8.94	-888.9	-20.20
Others	21.0	9.2	78.24	8.6	69.51
BY PUBLIC / PRIVATE SECTORS					
Public sector employed persons	3,506.2	52.3	1.51	22.1	0.63
Private sector employed persons	17,039.6	25.4	0.15	492.6	2.98
BY WORKING HOURS					
Full-time employed persons	17,923.7	273.9	1.55	589.8	3.40
Males	10,417.3	187.4	1.83	323.7	3.21
Females	7,506.4	86.6	1.17	266.1	3.68
Part-time employed persons	2,622.0	-196.2	-6.96	-75.1	-2.78
Males	697.7	-49.0	-6.56	8.9	1.29
Females	1,924.3	-147.3	-7.11	-84.0	-4.18

(*) Private employment includes all persons in employment other than public employees. Namely: private employees, employers, independent workers, cooperative members, family workers and other professional status.

6. Unemployed persons by sex, age group, and economic sector

BOTH SEXES	2,980.2	60.8	2.08	-436.5	-12.78
16 to 19 years	151.4	7.4	5.14	13.2	9.56
20 to 24 years	388.6	64.1	19.74	2.7	0.71
25 to 54 years	1,949.7	42.1	2.21	-313.2	-13.84
55 and over	490.5	-52.8	-9.71	-139.2	-22.11
MALES	1,336.8	-18.5	-1.37	-270.8	-16.84
16 to 19 years	83.4	3.3	4.15	7.3	9.64
20 to 24 years	192.6	27.7	16.81	-11.4	-5.57
25 to 54 years	834.8	-14.9	-1.76	-199.9	-19.32
55 and over	226.0	-34.7	-13.30	-66.9	-22.83
FEMALES	1,643.4	79.3	5.07	-165.7	-9.16
16 to 19 years	68.0	4.1	6.39	5.9	9.46
20 to 24 years	196.0	36.3	22.76	14.1	7.75
25 to 54 years	1,115.0	57.0	5.39	-113.4	-9.23
55 and over	264.5	-18.1	-6.41	-72.4	-21.48
TOTAL UNEMPLOYED PERSONS	2,980.2	60.8	2.08	-436.5	-12.78
Agriculture	159.3	14.4	9.98	-35.2	-18.08
Industry	144.6	6.4	4.63	12.0	9.04
Construction	101.2	-14.9	-12.86	-38.3	-27.46
Services	1,069.0	85.7	8.72	-17.6	-1.62
Lost their job more than 1 year ago	1,143.6	-81.7	-6.67	-365.1	-24.20
First job seekers	362.5	50.8	16.31	7.7	2.16

National results

(Absolute figures in thousands and rates in percentage)

	Current quarter	Variation on previous quarter		Variation on same quarter, previous year	
		Difference	Percentage	Difference	Percentage

7. Unemployment rate by relationship with the reference person

	Current quarter	Difference	Percentage	Difference	Percentage
TOTAL	12.67	0.18	-	-1.90	-
Reference person	10.57	-0.36	-	-1.54	-
Spouse or partner	9.85	0.03	-	-1.62	-
Child	23.74	2.06	-	-1.82	-
Other relatives	15.54	-1.15	-	-6.40	-
Unrelated persons	11.75	0.77	-	-7.36	-

8. Household data

	Current quarter	Difference	Percentage	Difference	Percentage
TOTAL HOUSEHOLDS	19,130.3	50.1	0.26	206.9	1.09
Households with at least one active member	13,828.2	63.1	0.46	158.2	1.16
- All members employed	11,294.2	47.1	0.42	495.3	4.59
- All members unemployed	977.4	-12.9	-1.30	-144.7	-12.89
Households without any active population	5,302.1	-13.0	-0.24	48.7	0.93

Mobility according to activity in current and previous quarter

Classification in previous quarter	Classification in current quarter			
	Total	Employed	Unemployed persons	Inactive
BOTH SEXES				
Total	39,969.1	20,545.7	2,980.2	16,443.2
Employed persons	20,412.1	19,152.6	654.5	605.1
Unemployed persons	2,947.3	754.4	1,554.8	638.1
Inactive	16,431.1	627.6	765.0	15,038.6
Not classifiable	178.6	11.2	5.9	161.4
MALES				
Total	19,415.3	11,137.1	1,314.1	6,964.1
Employed persons	10,984.2	10,423.9	297.5	262.8
Unemployed persons	1,376.2	401.4	726.7	248.1
Inactive	6,964.8	304.1	288.4	6,372.3
Not classifiable	90.1	7.7	1.5	80.8
FEMALES				
Total	20,553.9	9,408.6	1,666.1	9,479.1
Employed persons	9,428.0	8,728.7	357.0	342.3
Unemployed persons	1,571.1	352.9	828.1	390.0
Inactive	9,466.3	323.5	476.5	8,666.2
Not classifiable	88.5	3.5	4.5	80.6

Weighting factors of current quarter (backward analysis)

Results by autonomous community and autonomous city

(Absolute figures in thousands)

	Current quarter	Variation on previous quarter		Variation on same quarter, previous year	
		Difference	Percentage	Difference	Percentage
1. Population aged 16 years and over					
TOTAL	39,969.1	136.0	0.34	319.8	0.81
Andalucía	7,112.1	13.7	0.19	48.7	0.69
Aragón	1,095.5	0.3	0.03	-0.3	-0.03
Asturias, Principado de	882.2	0.1	0.01	3.0	0.35
Balears, Illes	1,039.7	7.7	0.74	15.0	1.46
Canarias	1,958.0	7.0	0.36	21.0	1.09
Cantabria	500.5	-0.4	-0.08	3.4	0.69
Castilla y León	2,029.1	-0.2	-0.01	-0.3	-0.01
Castilla-La Mancha	1,712.5	5.1	0.30	15.2	0.90
Cataluña	6,398.3	34.3	0.54	49.1	0.77
Comunitat Valenciana	4,293.7	19.9	0.46	46.3	1.09
Extremadura	890.3	-2.9	-0.32	-1.3	-0.14
Galicia	2,343.0	1.5	0.06	2.2	0.09
Madrid, Comunidad de	5,677.3	37.8	0.67	89.7	1.61
Murcia, Región de	1,256.5	4.3	0.34	15.4	1.24
Navarra, Comunidad Foral de	548.4	2.3	0.42	7.9	1.45
País Vasco	1,839.4	3.5	0.19	3.9	0.21
Rioja, La	265.3	1.3	0.49	1.6	0.61
Ceuta	64.9	0.0	0.02	0.0	0.02
Melilla	62.4	0.7	1.17	-0.7	-1.08

2. Active population

TOTAL	23,525.9	138.5	0.59	78.2	0.33
Andalucía	4,048.8	17.1	0.42	-8.0	-0.20
Aragón	642.3	-2.8	-0.44	-3.5	-0.54
Asturias, Principado de	441.3	10.3	2.38	-7.6	-1.68
Balears, Illes	694.2	19.1	2.84	12.0	1.75
Canarias	1,151.8	-2.6	-0.22	-2.3	-0.20
Cantabria	278.5	4.0	1.45	-5.4	-1.92
Castilla y León	1,121.9	0.2	0.02	12.8	1.16
Castilla-La Mancha	1,014.5	1.3	0.13	-7.2	-0.71
Cataluña	3,925.1	43.6	1.12	19.0	0.49
Comunitat Valenciana	2,533.1	46.6	1.87	49.1	1.97
Extremadura	500.4	2.6	0.52	-4.3	-0.85
Galicia	1,248.6	3.9	0.32	9.4	0.76
Madrid, Comunidad de	3,571.2	-26.1	-0.73	21.4	0.60
Murcia, Región de	749.8	-0.6	-0.09	-14.8	-1.93
Navarra, Comunidad Foral de	321.5	0.9	0.29	2.1	0.67
País Vasco	1,046.5	21.9	2.14	5.0	0.48
Rioja, La	157.6	-1.6	-0.98	-2.2	-1.40
Ceuta	40.6	1.4	3.49	4.4	12.28
Melilla	38.1	-0.8	-2.08	-1.7	-4.38

* Data below 5000 are subject to strong variations, due to sampling error

Results by autonomous community and autonomous city

(Absolute figures in thousands)

	Current quarter	Variation on previous quarter		Variation on same quarter, previous year	
		Difference	Percentage	Difference	Percentage
3. Employed persons					
TOTAL	20,545.7	77.7	0.38	514.7	2.57
Andalucía	3,280.6	2.1	0.06	133.0	4.23
Aragón	584.0	-3.4	-0.57	-5.1	-0.86
Asturias, Principado de	384.7	2.7	0.71	-8.8	-2.23
Balears, Illes	654.1	41.7	6.80	43.9	7.19
Canarias	947.6	-1.7	-0.18	69.3	7.89
Cantabria	254.6	2.4	0.97	-0.9	-0.35
Castilla y León	1,022.0	14.6	1.45	24.4	2.44
Castilla-La Mancha	868.3	-2.0	-0.22	2.8	0.33
Cataluña	3,559.9	38.8	1.10	80.4	2.31
Comunitat Valenciana	2,191.2	23.3	1.08	107.7	5.17
Extremadura	421.1	6.6	1.58	6.8	1.65
Galicia	1,113.8	8.5	0.77	1.3	0.11
Madrid, Comunidad de	3,166.5	-64.4	-1.99	37.2	1.19
Murcia, Región de	640.8	-18.3	-2.78	-11.8	-1.81
Navarra, Comunidad Foral de	292.6	0.1	0.04	7.4	2.60
País Vasco	959.7	24.9	2.66	21.5	2.29
Rioja, La	144.9	2.0	1.40	4.6	3.28
Ceuta	28.1	-2.2	-7.32	1.7	6.52
Melilla	31.2	1.9	6.37	-0.9	-2.85

4. Unemployed persons

TOTAL	2,980.2	60.8	2.08	-436.5	-12.78
Andalucía	768.3	15.0	2.00	-141.0	-15.51
Aragón	58.3	0.5	0.94	1.5	2.71
Asturias, Principado de	56.5	7.5	15.40	1.2	2.19
Balears, Illes	40.2	-22.5	-35.93	-31.9	-44.30
Canarias	204.2	-0.8	-0.39	-71.6	-25.95
Cantabria	24.0	1.5	6.84	-4.5	-15.93
Castilla y León	99.9	-14.4	-12.60	-11.5	-10.34
Castilla-La Mancha	146.2	3.3	2.30	-10.1	-6.44
Cataluña	365.2	4.7	1.31	-61.4	-14.40
Comunitat Valenciana	341.9	23.3	7.30	-58.7	-14.65
Extremadura	79.3	-4.0	-4.78	-11.2	-12.33
Galicia	134.8	-4.6	-3.30	8.1	6.42
Madrid, Comunidad de	404.6	38.3	10.46	-15.8	-3.76
Murcia, Región de	109.0	17.6	19.31	-3.0	-2.66
Navarra, Comunidad Foral de	28.9	0.8	2.95	-5.3	-15.45
País Vasco	86.7	-3.0	-3.29	-16.4	-15.94
Rioja, La	12.7	-3.6	-21.91	-6.9	(:)
Ceuta	12.5	3.6	40.20	2.7	(:)
Melilla	6.9	-2.7	-27.88	-0.8	-10.71

* Data below 5,000 are subject to strong variations, due to sampling error

Results by autonomous community and autonomous city

(Absolute figures in thousands and rates in percentage)

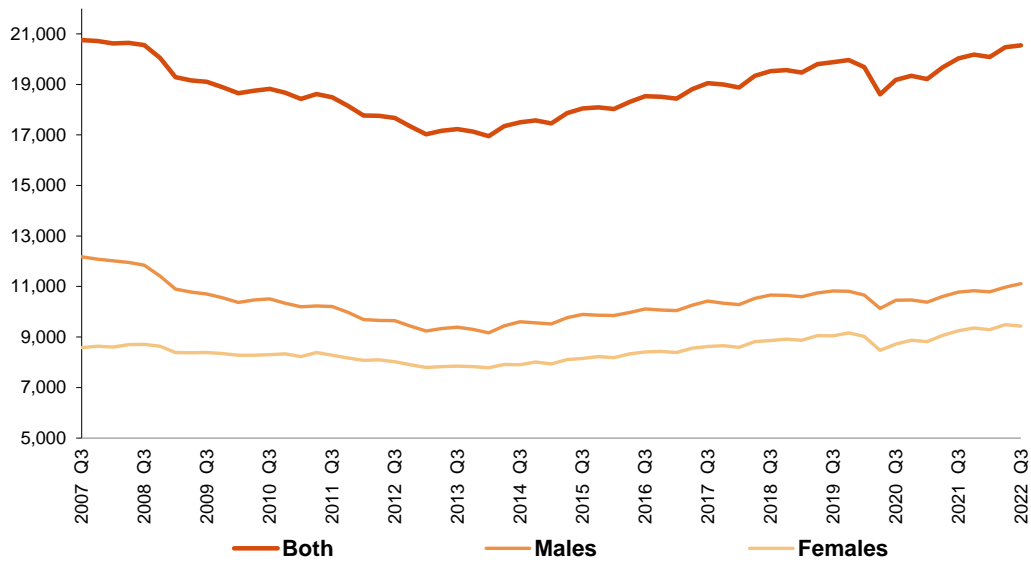
5. Employed and unemployed persons by sex. Activity and unemployment rates

	Both sexes				Males				Females			
	Employed persons	Unemployed persons	Activity rate	Unem. rate	Employed persons	Unemployed persons	Activity rate	Unem. Rate	Employed persons	Unemployed persons	Activity rate	Unem. Rate
TOTAL	20,545.7	2,980.2	58.86	12.67	11,115.0	1,336.8	64.19	10.74	9,430.7	1,643.4	53.84	14.84
Andalucía	3,280.6	768.3	56.93	18.98	1,849.8	338.8	62.96	15.48	1,430.8	429.5	51.16	23.09
Aragón	584.0	58.3	58.63	9.08	317.2	24.5	63.81	7.18	266.8	33.8	53.68	11.24
Asturias, Principado de	384.7	56.5	50.02	12.81	200.8	27.4	54.61	12.02	184.0	29.1	45.89	13.65
Baleares, Illes	654.1	40.2	66.77	5.79	347.3	19.1	71.31	5.21	306.8	21.1	62.34	6.43
Canarias	947.6	204.2	58.83	17.73	515.7	92.8	63.49	15.25	431.9	111.4	54.35	20.50
Cantabria	254.6	24.0	55.65	8.61	137.3	10.5	61.21	7.12	117.2	13.5	50.47	10.30
Castilla y León	1,022.0	99.9	55.29	8.91	553.8	43.0	59.87	7.21	468.2	56.9	50.86	10.83
Castilla-La Mancha	868.3	146.2	59.24	14.41	511.0	58.1	66.30	10.20	357.3	88.1	52.15	19.79
Cataluña	3,559.9	365.2	61.35	9.31	1,877.8	175.3	66.33	8.54	1,682.1	189.9	56.67	10.15
Comunitat Valenciana	2,191.2	341.9	59.00	13.50	1,203.5	147.6	64.54	10.93	987.7	194.3	53.72	16.43
Extremadura	421.1	79.3	56.21	15.85	239.2	35.4	62.74	12.88	181.9	43.9	49.89	19.46
Galicia	1,113.8	134.8	53.29	10.80	579.1	63.2	57.31	9.84	534.6	71.7	49.60	11.82
Madrid, Comunidad de	3,166.5	404.6	62.90	11.33	1,652.4	172.8	67.99	9.47	1,514.1	231.8	58.34	13.28
Murcia, Región de	640.8	109.0	59.68	14.54	357.1	53.8	65.66	13.09	283.7	55.3	53.74	16.31
Navarra, Comunidad Foral de	292.6	28.9	58.63	8.99	158.3	12.9	63.60	7.51	134.3	16.0	53.83	10.67
País Vasco	959.7	86.7	56.89	8.29	503.2	44.7	62.15	8.16	456.5	42.0	52.06	8.43
Rioja, La	144.9	12.7	59.39	8.03	77.2	6.6	64.45	7.89	67.7	6.0	54.53	8.20
Ceuta	28.1	12.5	62.53	30.82	17.3	6.8	72.30	28.20	10.8	5.7	52.23	34.64
Melilla	31.2	6.9	61.08	18.16	17.0	3.5	68.21	16.92	14.2	3.5	54.46	19.60

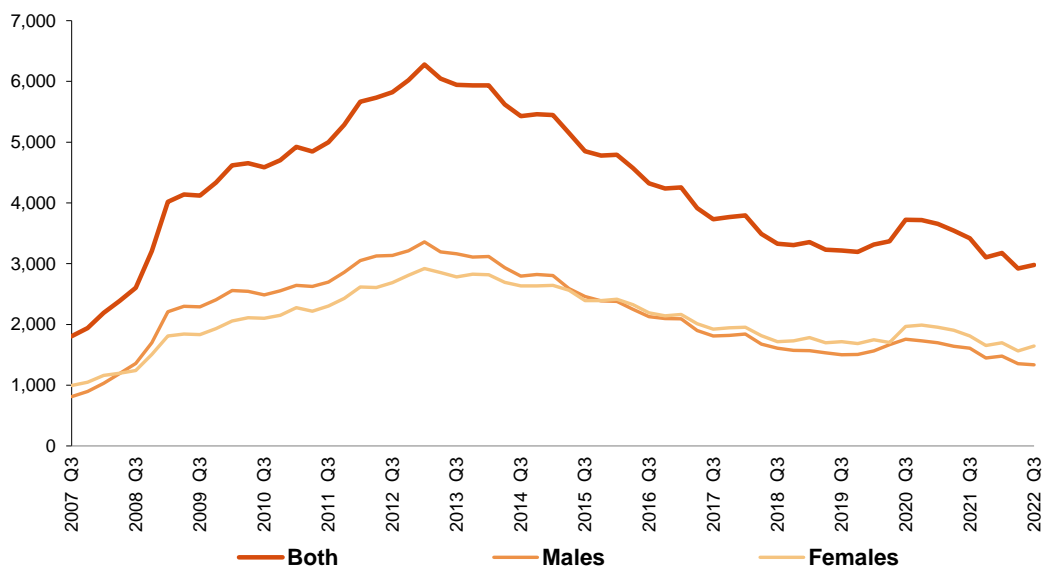
* Data below 5,000 are subject to strong variations, due to sampling errors

Employed and Unemployed by sex EAPS
Third Quarter 2022

Employed. Thousands



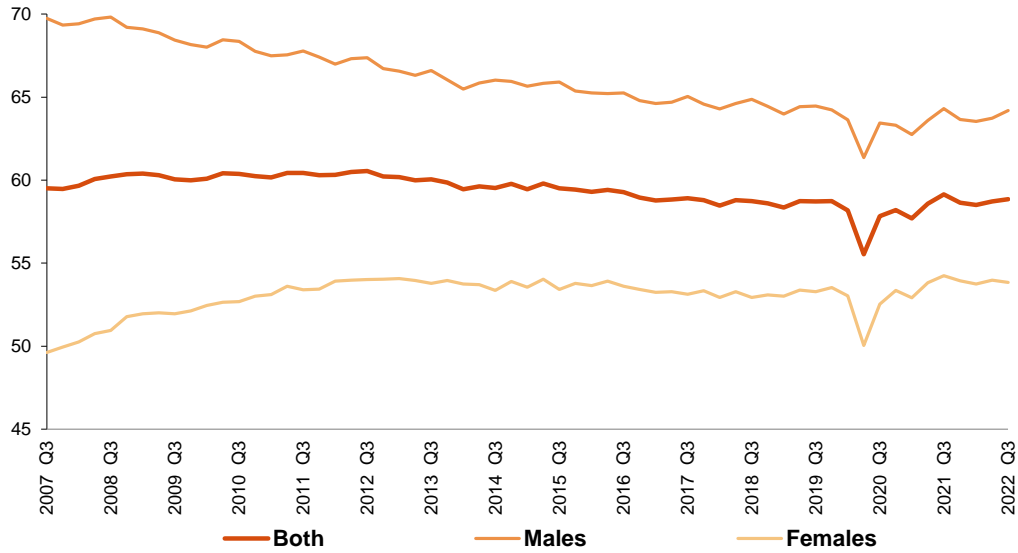
Unemployed. Thousands



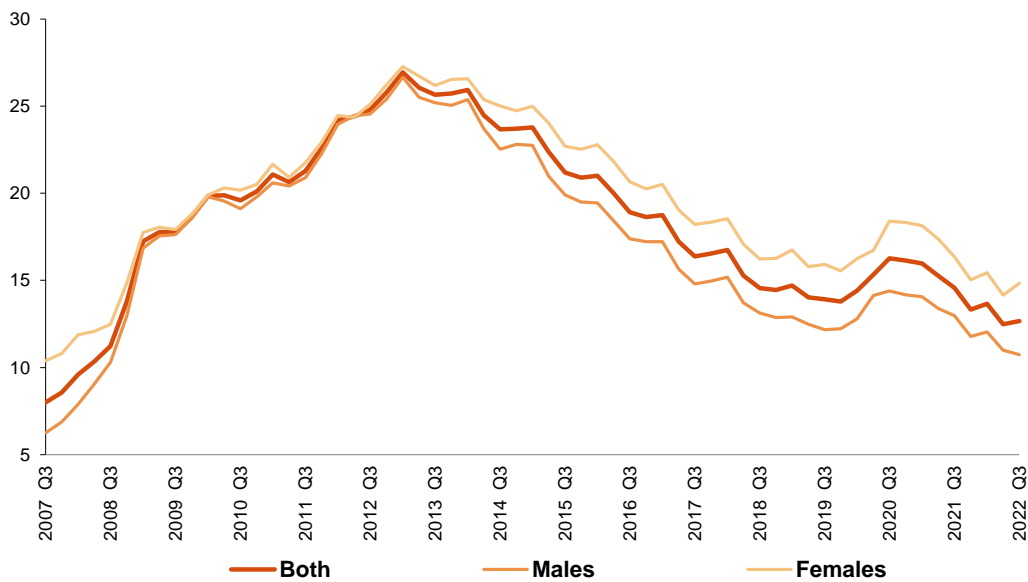
Activity and unemployment rates by sex
Third Quarter 2022

EAPS

Activity rate. Percentage



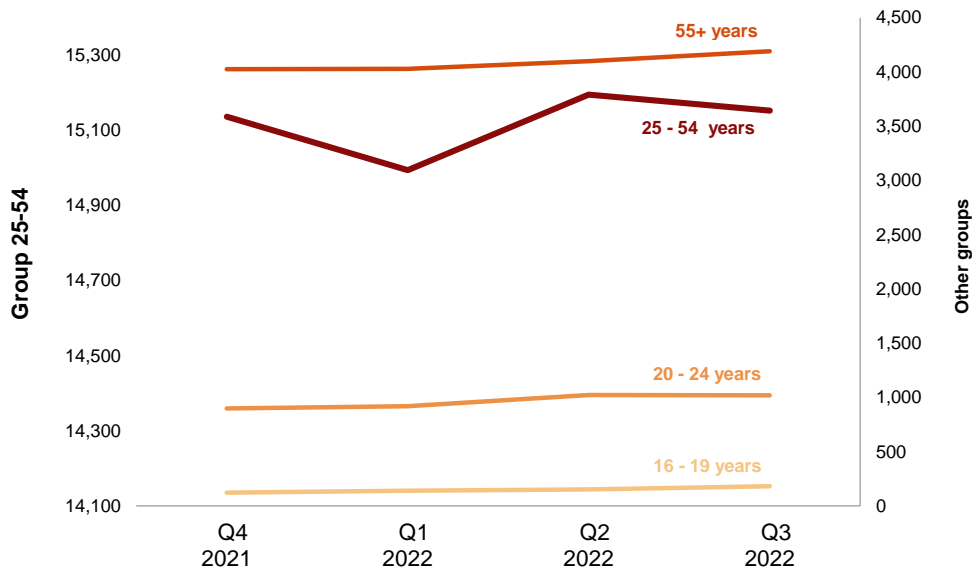
Unemployment rate. Percentage



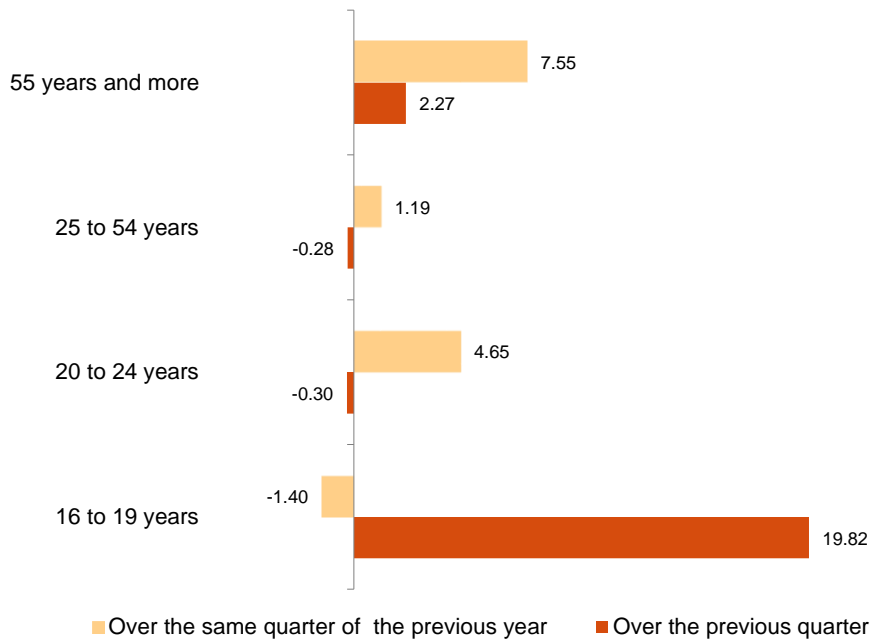
Employment by age
Third Quarter 2022

EAPS

Employment. Thousands



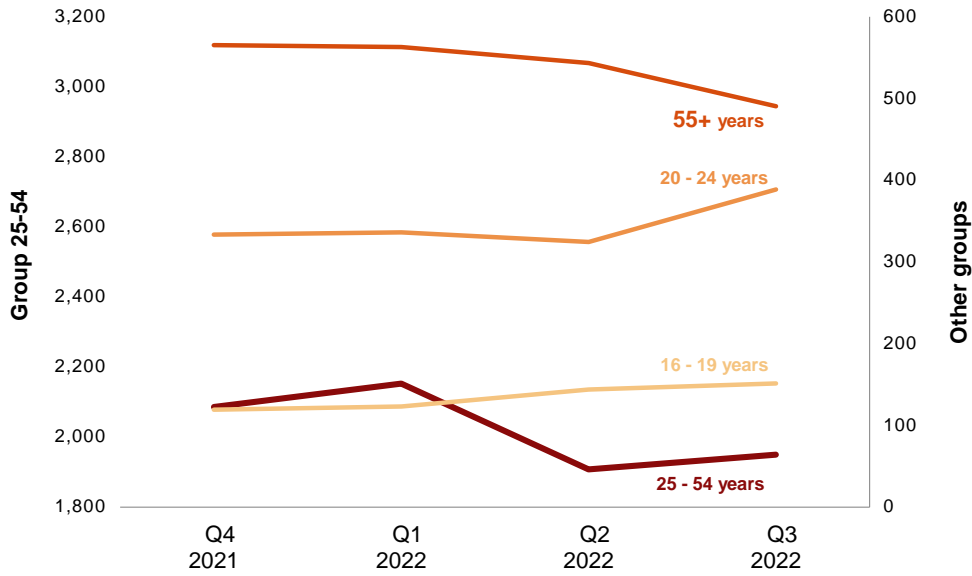
Variation of employment. Thousands



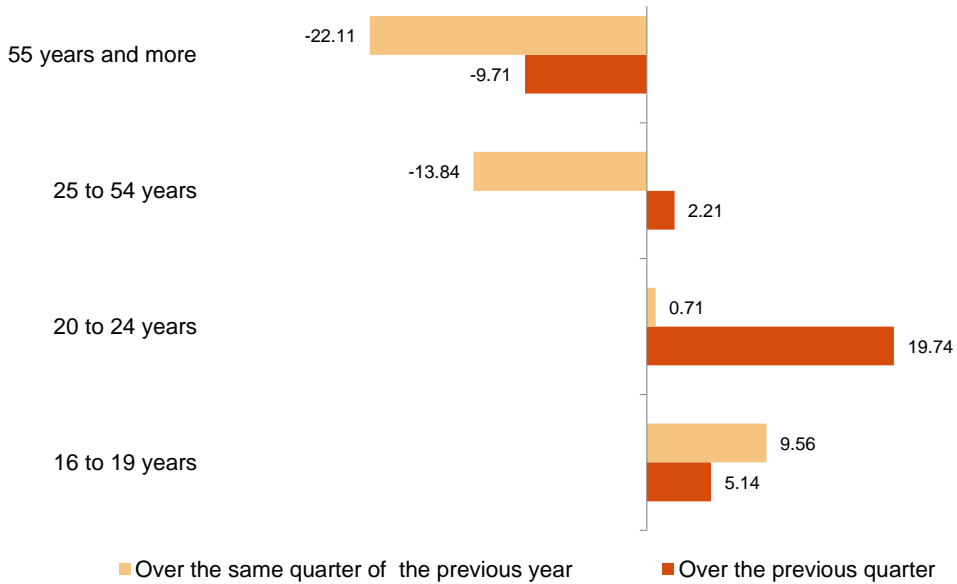
Unemployment by age
Third Quarter 2022

EAPS

Unemployment. Thousands



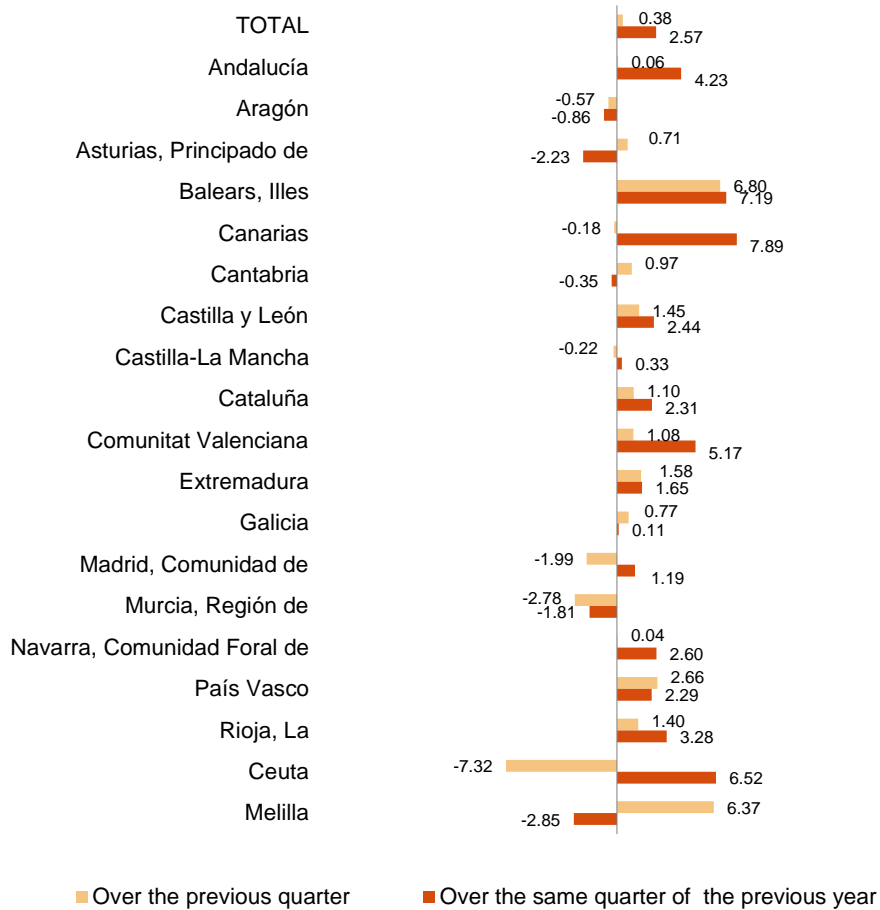
Variation of unemployment. Thousands



Third Quarter 2022

EAPS

Variation of employment. Percentage



Unemployment rate Percentage
(Spain= 12.67 %)

