

31 January 2022

**Retail Trade Indices (RTI). Base 2015**  
December 2021. Provisional data

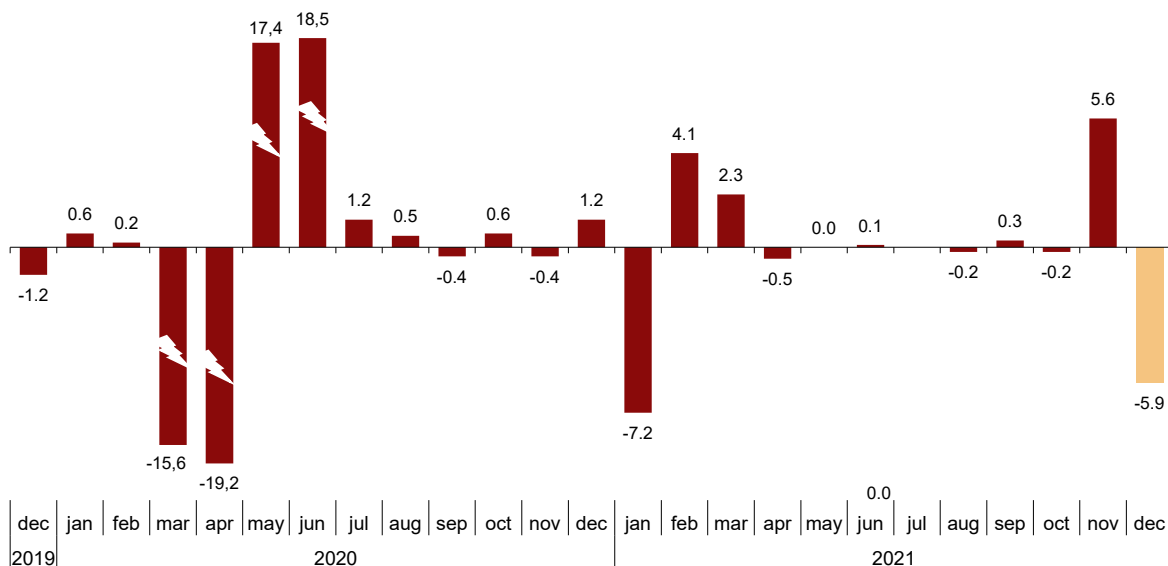
**The monthly variation of the Retail Trade Index at constant prices is -5.9% after seasonal and calendar adjustment**

**The annual rate of the General Retail Trade Index at constant prices stands at -2.3% in the seasonal and calendar adjusted series and at -3.3% in the original series**

**Monthly trend of sales in retail trade**

The monthly variation of the seasonally and calendar adjusted general Retail Trade Index (RTI) at constant prices between the months of December and November, stood at -5.9%. This rate was 11.5 points lower than the previous month.

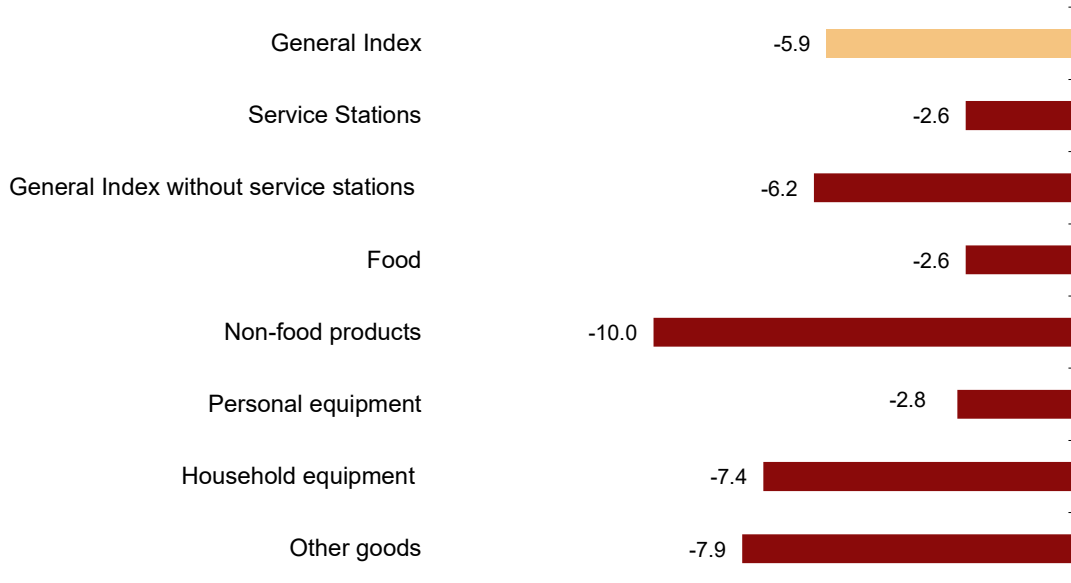
**General Retail Trade Index at constant prices**  
Seasonally and calendar adjusted. Monthly rate. Percentage



The general index, excluding service stations, recorded a monthly rate of -6.2%.

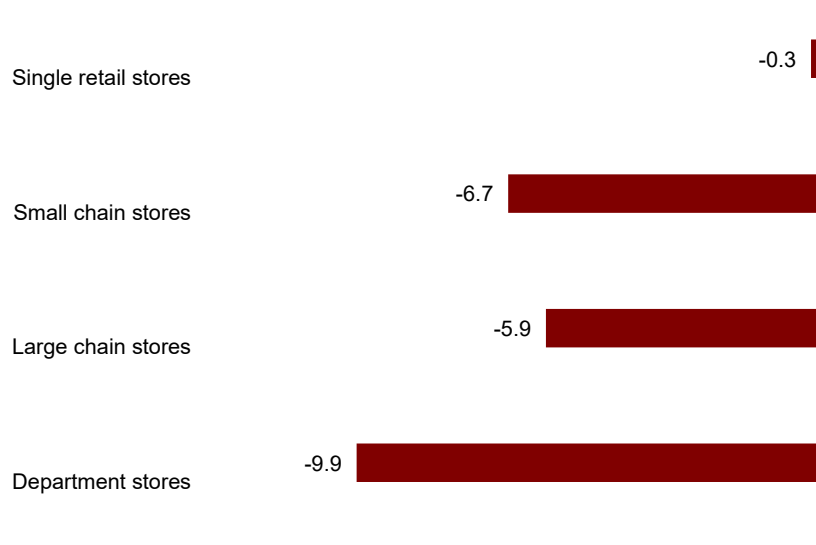
By products, *Food* decreased by 2.6% and *Non-food products* by 10.0%. If the latter is broken down by type of product, *Other goods* decreased the most (-7.9%).

**Sales indices at constant prices: General and by type of products**  
 Seasonally and calendar adjusted. December 2021. Monthly rate. Percentage



All distribution classes showed negative monthly rates. *Department stores* registered the greatest decrease (-9.9%).

**Sales indices at constant prices by distribution type**  
 Seasonally and calendar adjusted. December 2021. Monthly rate. Percentage



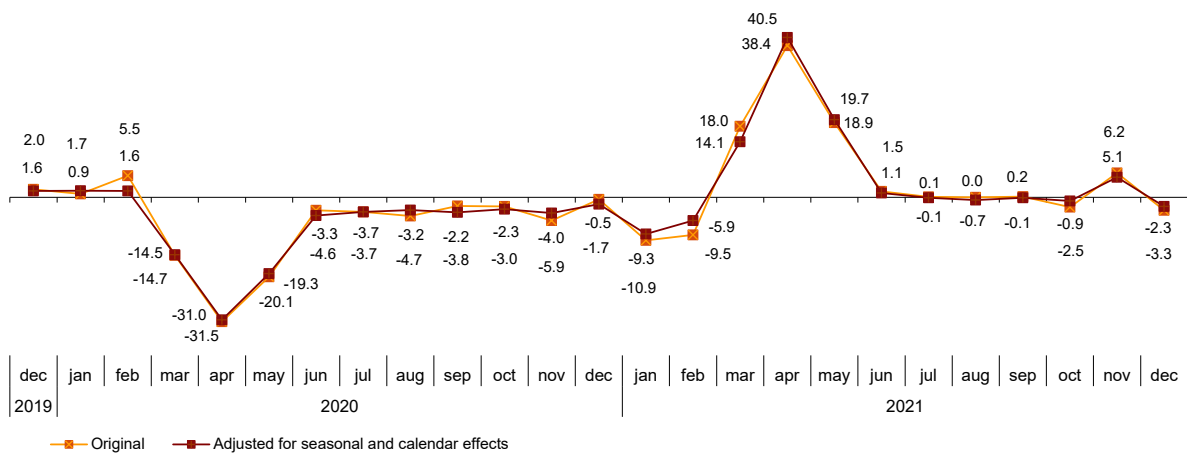
## Annual trend of sales in retail trade

In December, the General Retail Trade Index, once adjusted for seasonal and calendar effects, registered a variation of  $-2.3\%$  as compared with the same month of the previous year. This rate was 7.4 points lower than the one registered in November.

The original RTI series at constant prices registered an annual variation of  $-3.3\%$ , this rate was 9.5 points below the rate of the previous month.

## Retail Trade General Index at constant prices

Annual rates. Percentage



The seasonally and calendar adjusted index excluding service stations registered an annual variation of  $-3.7\%$  in December. If these sales are broken down by type of product, *Food* decreased by  $2.5\%$ , and *Non-food products* by  $5.5\%$ .

## Retail trade sector sales. Annual rates at constant prices December 2021

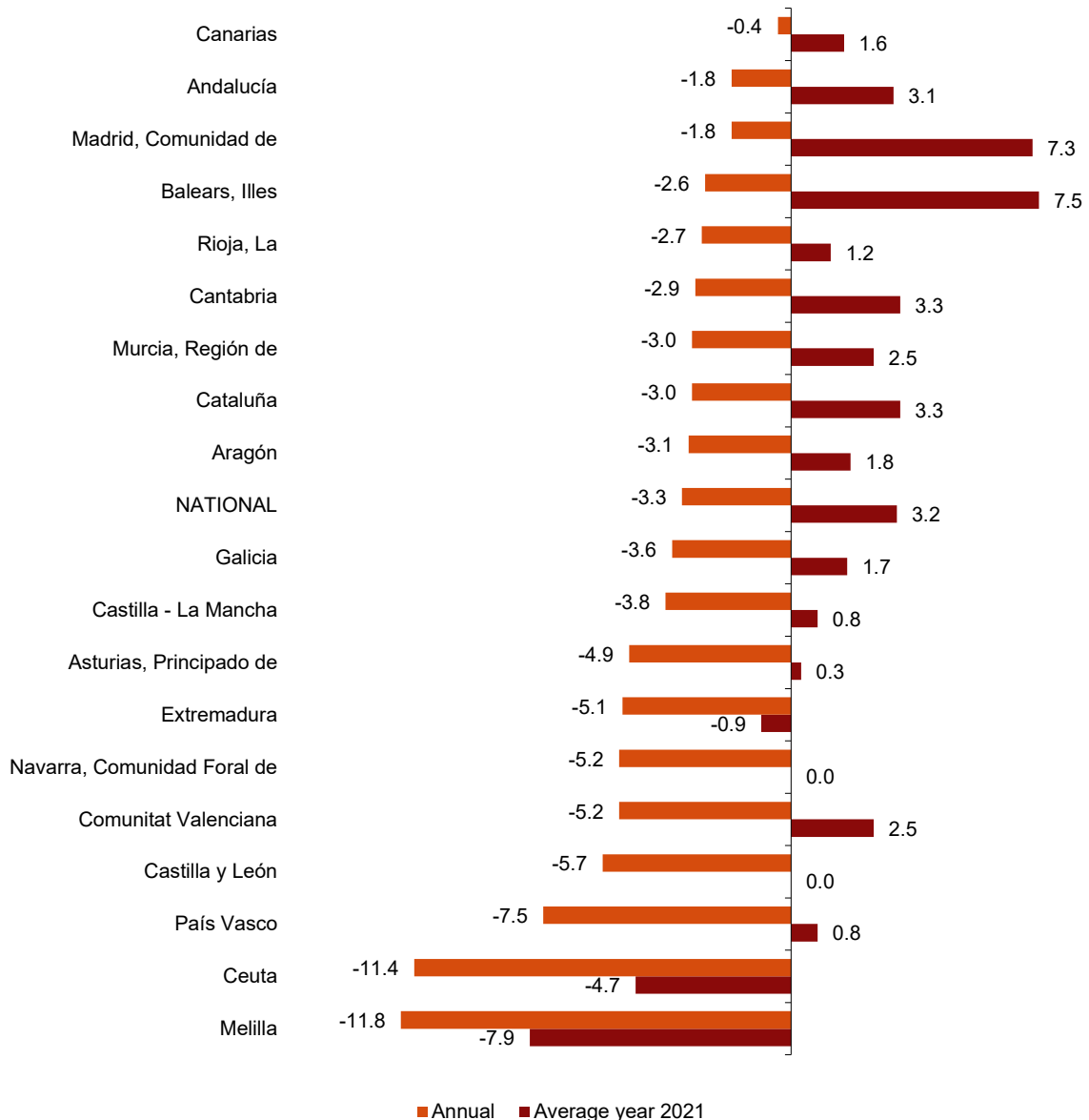
	Original index	Seasonally and calendar adjusted index	
	Annual rate (%)	Annual rate (%)	Average year 2021 (%)
GENERAL INDEX	-3.3	-2.3	3.8
Service stations	10.2	10.3	12.4
General index without service stations	-4.0	-3.7	3.1
- Food	-2.3	-2.5	-0.8
- Non-food products	-6.2	-5.5	6.6
- Personal equipment	14.1	14.3	21.5
- Household equipment	-6.5	-5.9	10.8
- Other goods	-5.4	-4.9	2.1
Distribution class			
- Single retail stores	-4.2	-3.9	2.1
- Small chain stores	-1.0	-0.6	7.8
- Large chain stores	-4.4	-4.1	0.3
- Department stores	-5.5	-2.5	7.3

**Results by Autonomous Community. Annual rates of sales. Original series**

Sales decreased in the annual rate in all Autonomous Communities in December.

País Vasco (-7.5%), Castilla y León (-5.7%) and Comunitat Valenciana (-5.2%) registered the greatest decreases. In turn, Canarias (-0.4%), Andalucía and Comunidad de Madrid (both with -1.8%) registered the lowest decreases.

**General indices: national and by Autonomous City and Community**  
**December 2021. Annual sales rate. Percentage**



**Employment trend**

In December, the employment index in the retail trade sector registered a variation of 2.4% as compared to the same month of 2020. This rate was one tenth below that recorded in November. Employment increased by 3.1% in *Service stations*. Employment increased by 3.1% in *Service stations*.

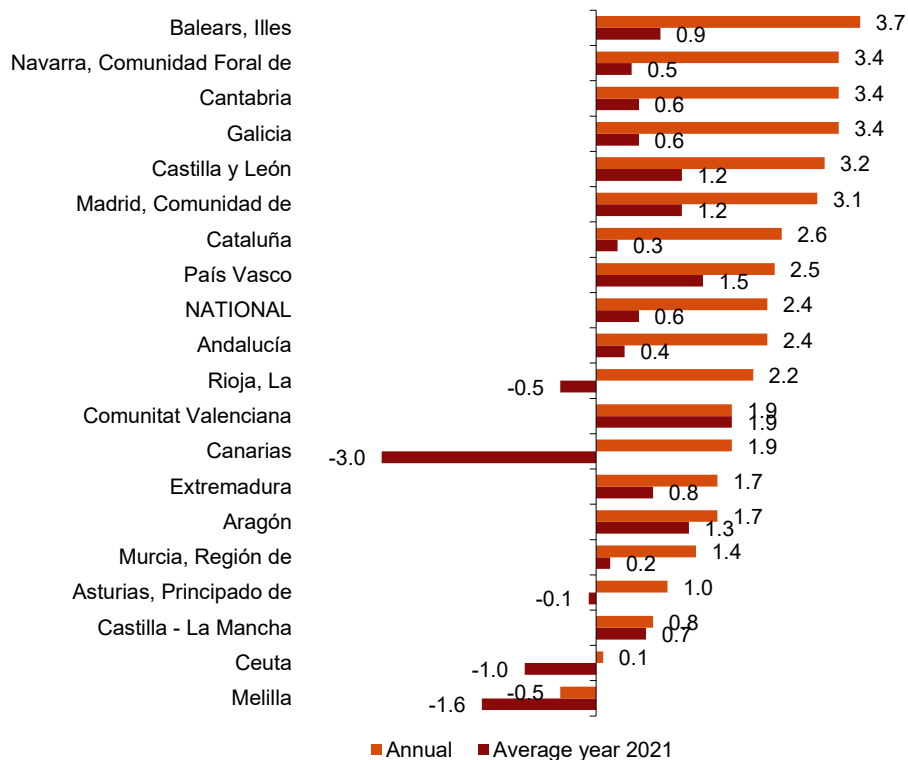
## Employment indices: General and by distribution type December 2021

	Index	Rate (%)		
		Monthly	Annual	Average year 2021
GENERAL INDEX	105.3	0.9	2.4	0.6
Service stations	104.9	-0.1	3.1	0.2
General Index without service stations	105.3	0.9	2.4	0.6
- Single retail stores	100.8	0.6	1.3	1.0
- Small chain stores	95.8	0.3	1.8	-1.2
- Large chain stores	119.0	1.2	3.1	0.5
- Department stores	112.8	2.4	6.1	2.2

## Results by Autonomous Community. Annual employment rate

Employment in retail trade increased in 17 Autonomous Communities in the annual rate. Illes Balears registered the greatest increase (3.7%).

## General indices: national and by Autonomous Communities and Cities December 2021. Annual employment rate. Percentage



## Revisions and update of data

On the press release day, INE has updated RTI data series corresponding to the last three months. In the case of calendar adjusted and seasonally and calendar adjusted series, according to INE standard, series are revised since its beginning. Results are available on INEBase.

## Methodological note

The main objective of the Retail Trade Indices (RTI) is to ascertain the fundamental characteristics of the companies engaged in retail trade in Spain, which make it possible to measure, in the short term, the trend of activity in the sector.

**Survey type:** continuous monthly survey.

**Base year:** 2015.

**Population scope:** companies whose main activity is included within division 47 of the CNAE-2009 Retail trade, except of motor vehicles and motorcycles.

**Geographical scope:** the whole country.

**Sample size:** Approximately 12.000 companies.

**Type of sampling:** stratified random sampling.

**Collection method:** fill in a questionnaire by the respondent using one of the following methods: internet (IRIA system), e-mail, fax, telephone or by post.

Further information is available in the methodology:

[http://www.ine.es/en/daco/daco43/notaccm15\\_en.pdf](http://www.ine.es/en/daco/daco43/notaccm15_en.pdf)

And in the standardised methodological report:

<http://www.ine.es/dynt3/metadatos/en/RespuestaDatos.html?oe=30103>

INE statistics are produced in accordance with the Code of Good Practice for European Statistics, which is the basis for the institution's quality policy and strategy. For more information see the section on [Quality at INE and the Code of Best Practices](#) on the INE website.

---

For further information see **INEbase:** [www.ine.es/en/](http://www.ine.es/en/) Twitter: [@es\\_ine](#)

All press releases at: [www.ine.es/en/prensa/prensa\\_en.htm](http://www.ine.es/en/prensa/prensa_en.htm)

**Press office:** Telephone numbers: (+34) 91 583 93 63 /94 08 – [gprensa@ine.es](mailto:gprensa@ine.es)

**Information Area:** Telephone number: (+34) 91 583 91 00 – [www.ine.es/infoine/?L=1](http://www.ine.es/infoine/?L=1)

---

## Retail Trade Indices (RTI). Base 2015

December 2021

Provisional data

### 1. Sales indices: General, by products and by distribution type Seasonally and calendar adjusted

	Index	Rate (%)			Deflated index	Rate (%)		
		Monthly	Annual	Average year 2021		Monthly	Annual	Average year 2021
<b>GENERAL INDEX</b>	115.0	-3.4	6.3	8.9	103.5	-5.9	-2.3	3.8
Service stations	120.6	-4.2	36.6	29.2	97.3	-2.6	10.3	12.4
General Index without service stations	114.1	-4.9	4.0	7.1	103.8	-6.2	-3.7	3.1
- Food	115.6	-2.2	0.9	0.9	104.1	-2.6	-2.5	-0.8
- Non-food products	112.8	-7.5	5.6	12.8	103.3	-10.0	-5.5	6.6
- Personal equipment	105.2	-2.9	15.5	22.7	99.8	-2.8	14.3	21.5
- Household equipment	126.1	-6.8	-4.0	11.9	122.4	-7.4	-5.9	10.8
- Other goods	110.9	-5.1	6.2	8.2	101.6	-7.9	-4.9	2.1
<b>Distribution class</b>								
- Single retail stores	104.9	0.9	3.8	6.0	95.8	-0.3	-3.9	2.1
- Small chain stores	105.6	-5.0	7.4	12.1	96.1	-6.7	-0.6	7.8
- Large chain stores	130.4	-4.4	3.7	4.2	118.8	-5.9	-4.1	0.3
- Department stores	115.1	-10.9	4.0	11.3	104.9	-9.9	-2.5	7.3

### 2. Sales indices: General, by products and by distribution type Calendar adjusted

	Index	Rate (%)		Deflated index	Rate (%)	
		Annual	Average year 2021		Annual	Average year 2021
<b>GENERAL INDEX</b>	136.7	6.6	8.8	120.9	-2.9	3.5
Service stations	116.9	36.6	30.0	96.0	10.4	12.5
General Index without service stations	138.5	4.5	7.0	123.5	-3.7	2.9
- Food	137.9	2.6	1.0	122.7	-2.0	-0.8
- Non-food products	138.9	6.0	12.4	123.2	-5.8	5.9
- Personal equipment	137.7	15.6	21.6	119.8	14.5	18.7
- Household equipment	144.4	-4.0	11.3	139.5	-6.0	10.1
- Other goods	136.8	6.9	8.0	121.3	-5.0	1.8
<b>Distribution class</b>						
- Single retail stores	117.7	4.4	6.1	104.9	-3.7	2.0
- Small chain stores	126.7	8.0	12.1	113.0	-0.5	7.6
- Large chain stores	159.3	4.2	4.2	142.0	-3.9	0.2
- Department stores	155.9	2.9	10.6	139.0	-5.3	6.2

### 3. Sales indices: General, by products and by distribution type Unadjusted

	Index	Rate (%)		Deflated index	Rate (%)	
		Annual	Average year 2021		Annual	Average year 2021
<b>GENERAL INDEX</b>	136.9	6.2	8.5	121.1	-3.3	3.2
Service stations	117.1	36.3	29.8	96.1	10.2	12.2
General Index without service stations	138.7	4.1	6.7	123.7	-4.0	2.6
- Food	138.1	2.2	0.7	122.9	-2.3	-1.1
- Non-food products	139.1	5.6	12.1	123.4	-6.2	5.6
- Personal equipment	137.8	15.2	21.1	120.0	14.1	18.3
- Household equipment	144.6	-4.5	10.9	139.7	-6.5	9.7
- Other goods	137.0	6.4	7.7	121.5	-5.4	1.5
<b>Distribution class</b>						
- Single retail stores	117.9	4.0	5.8	105.1	-4.2	1.7
- Small chain stores	126.9	7.5	11.7	113.1	-1.0	7.2
- Large chain stores	159.4	3.8	4.2	142.1	-4.4	0.2
- Department stores	156.0	2.6	10.4	139.1	-5.5	5.9
- Food	165.1	1.2	-1.6	147.0	-3.3	-3.4
- Non-food products	151.8	3.3	16.9	134.6	-8.2	10.0

### 4. Sales indices: National and by Autonomous City and Community Unadjusted

	Index	Rate (%)		Deflated index	Rate (%)	
		Annual	Average year 2021		Annual	Average year 2021
<b>NATIONAL</b>	136.9	6.2	8.5	121.1	-3.3	3.2
Andalucía	132.6	7.8	8.2	118.0	-1.8	3.1
Aragón	136.6	7.4	7.5	120.6	-3.1	1.8
Asturias, Principado de	126.2	4.3	5.4	112.7	-4.9	0.3
Balears, Illes	117.3	7.4	13.5	103.8	-2.6	7.5
Canarias	136.9	8.4	5.5	121.8	-0.4	1.6
Cantabria	132.0	6.7	8.7	115.7	-2.9	3.3
Castilla y León	126.7	4.4	5.7	111.0	-5.7	0.0
Castilla - La Mancha	137.2	6.9	6.6	120.2	-3.8	0.8
Cataluña	131.3	6.3	8.6	115.0	-3.0	3.3
Comunitat Valenciana	133.0	4.5	8.0	118.5	-5.2	2.5
Extremadura	120.7	4.4	4.3	107.5	-5.1	-0.9
Galicia	137.9	5.8	7.1	122.1	-3.6	1.7
Madrid, Comunidad de	164.8	7.5	12.6	146.6	-1.8	7.3
Murcia, Región de	130.5	5.8	7.2	117.3	-3.0	2.5
Navarra, Comunidad Foral de	127.6	4.3	5.6	111.9	-5.2	0.0
País Vasco	134.1	1.5	5.9	117.8	-7.5	0.8
Rioja, La	138.8	7.6	6.5	121.9	-2.7	1.2
Ceuta	102.1	-4.3	-0.5	92.0	-11.4	-4.7
Melilla	96.2	-3.2	-3.0	85.3	-11.8	-7.9



## 5. Employment Indices: General and by distribution type

	Index	Rate (%)		
		Monthly	Annual	Average year 2021
GENERAL INDEX	105.3	0.9	2.4	0.6
Service stations	104.9	-0.1	3.1	0.2
General Index without service stations	105.3	0.9	2.4	0.6
- Single retail stores	100.8	0.6	1.3	1.0
- Small chain stores	95.8	0.3	1.8	-1.2
- Large chain stores	119.0	1.2	3.1	0.5
- Department stores	112.8	2.4	6.1	2.2

## 6. Employment Indices: National and by Autonomous City and Community

	Index	Rate (%)		
		Monthly	Annual	Average year 2021
NATIONAL	105.3	0.9	2.4	0.6
Andalucía	102.2	0.7	2.4	0.4
Aragón	106.3	0.3	1.7	1.3
Asturias, Principado de	104.6	1.2	1.0	-0.1
Balears, Illes	104.2	-0.1	3.7	0.9
Canarias	105.5	1.7	1.9	-3.0
Cantabria	104.0	0.7	3.4	0.6
Castilla y León	107.4	2.0	3.2	1.2
Castilla - La Mancha	103.0	1.0	0.8	0.7
Cataluña	103.9	0.8	2.6	0.3
Comunitat Valenciana	110.8	0.7	1.9	1.9
Extremadura	104.2	1.5	1.7	0.8
Galicia	105.8	1.5	3.4	0.6
Madrid, Comunidad de	106.7	0.6	3.1	1.2
Murcia, Región de	104.8	1.1	1.4	0.2
Navarra, Comunidad Foral de	104.0	1.3	3.4	0.5
Pais Vasco	105.8	0.7	2.5	1.5
Rioja, La	107.0	1.0	2.2	-0.5
Ceuta	101.3	2.3	0.1	-1.0
Melilla	100.0	1.2	-0.5	-1.6