

**Industrial Production Indices (IPI). Base 2015**  
April 2022 Provisional Data

**The monthly variation of the Industrial Production Index is 2.1% after adjusting for seasonal and calendar effects**

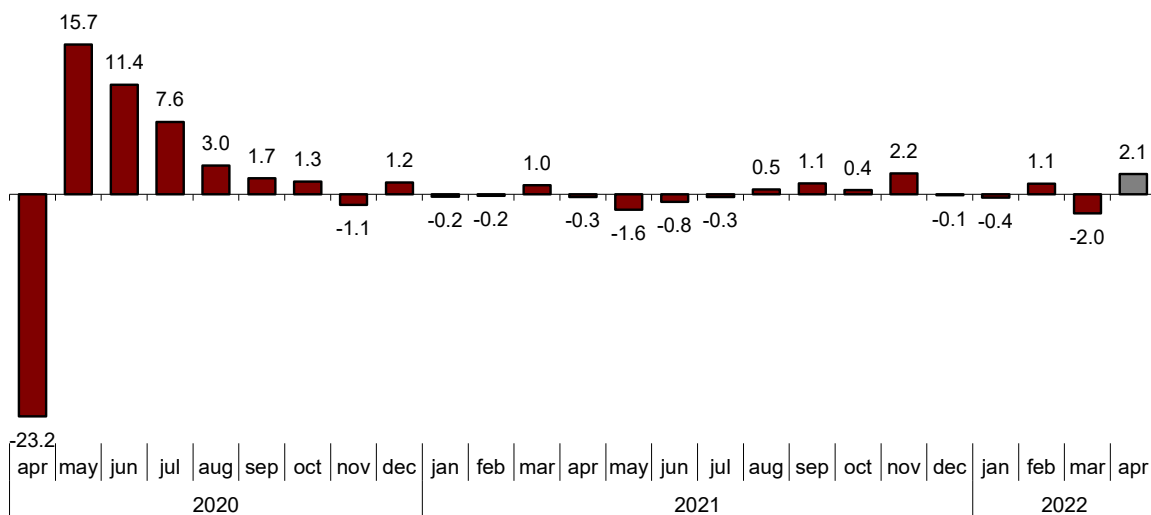
**The annual rate of the Industrial Production Index stands at 2.4% in the series adjusted for seasonal and calendar effects and at -0.4% in the original series**

**Monthly evolution of industrial production**

After adjusting for seasonal and calendar effects, the monthly variation of the Industrial Production Index (IPI) between April and March stood at 2.1%. This rate is 4.1 points higher than that observed in March.

**General Industrial Production Index**

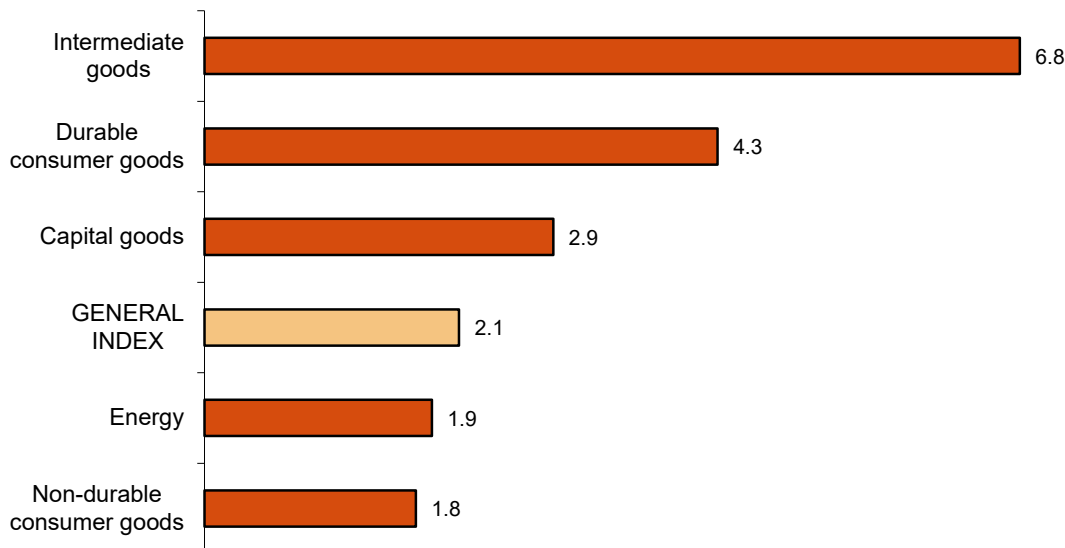
Adjusted for seasonal and calendar effects. Monthly rate (percentage)



All sectors showed positive monthly rates. It is worth highlighting the increase in *Intermediate goods* (6.8%) followed by *Durable consumer goods* (4.3%).

## Industrial Production Indices: General and by economic destination

Adjusted for seasonal and calendar effects. April 2022 Monthly rate (percentage)



A more detailed analysis shows the branches of activity with the greatest and lowest monthly rates in the month of April.

### Branches of activity with the highest monthly rates of the industrial production index adjusted for seasonal and calendar effects

Activity (Division from CNAE 2009)	Monthly rate (%)
Leather and footwear industry	21.4
Manufacture of garments	19.3
Manufacture of electrical material and equipment	17.1

### Branches of activity with the lowest monthly rates of the industrial production index adjusted for seasonal and calendar effects

Activity (Division from CNAE 2009)	Monthly rate (%)
Manufacture of pharmaceutical products	-6.9
Manufacture of computers, electronic and optical products	-5.9
Tobacco industry	-3.4

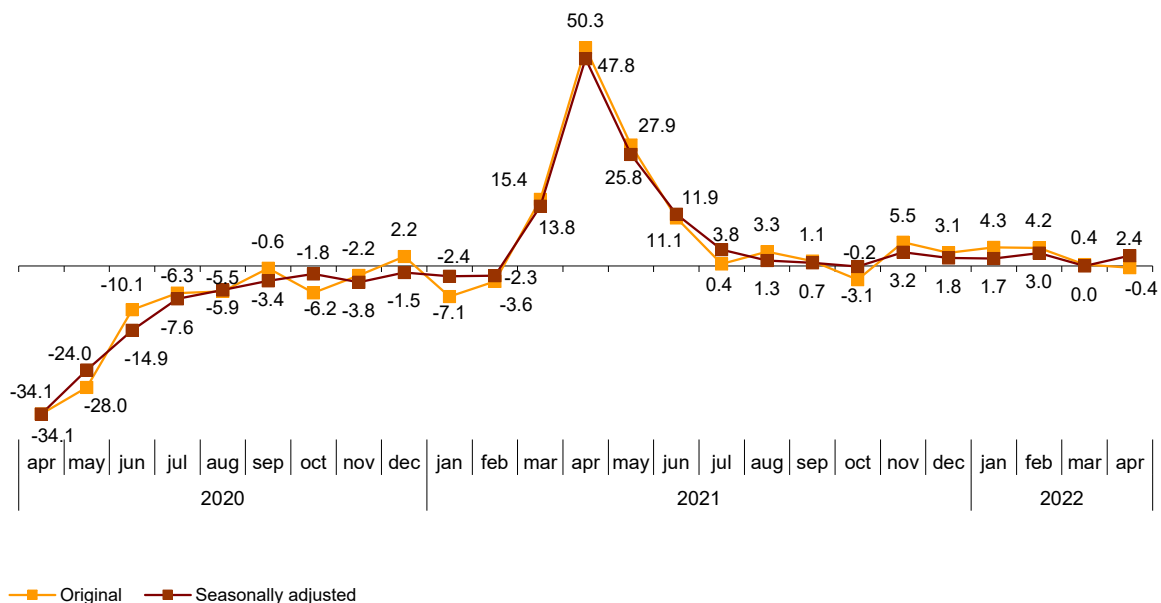
## Annual evolution of industrial production

After adjusting for seasonal and calendar effects, the Industrial Production Index registered a variation of 2.4% in April, as compared with the same month of the previous year. This rate is 2.4 points higher than that registered in March.

The original IPI series experienced an annual variation of -0.4%. This rate is 0.8 points lower than that of March.

### General Industrial Production Index

Annual rate (percentage)



Four of the five sectors showed positive annual rates. It is worth highlighting the increase in *Durable consumer goods* (7.8%) followed by *Non-durable consumer goods* (5.2%). The only sector that decreased was *Intermediate goods* (-0.2%).

### Annual rates of industrial production indices: General and by economic destination of the goods

	Original index Annual rate (%)	Seasonally adjusted index Annual rate (%)
General Index	-0.4	2.4
Consumer goods	1.8	6.2
- Durable consumer goods	3.5	7.8
- Non-durable consumer goods	1.7	5.2
Capital goods	-1.6	2.1
Intermediate goods	-3.7	-0.2
Energy	3.9	4.6

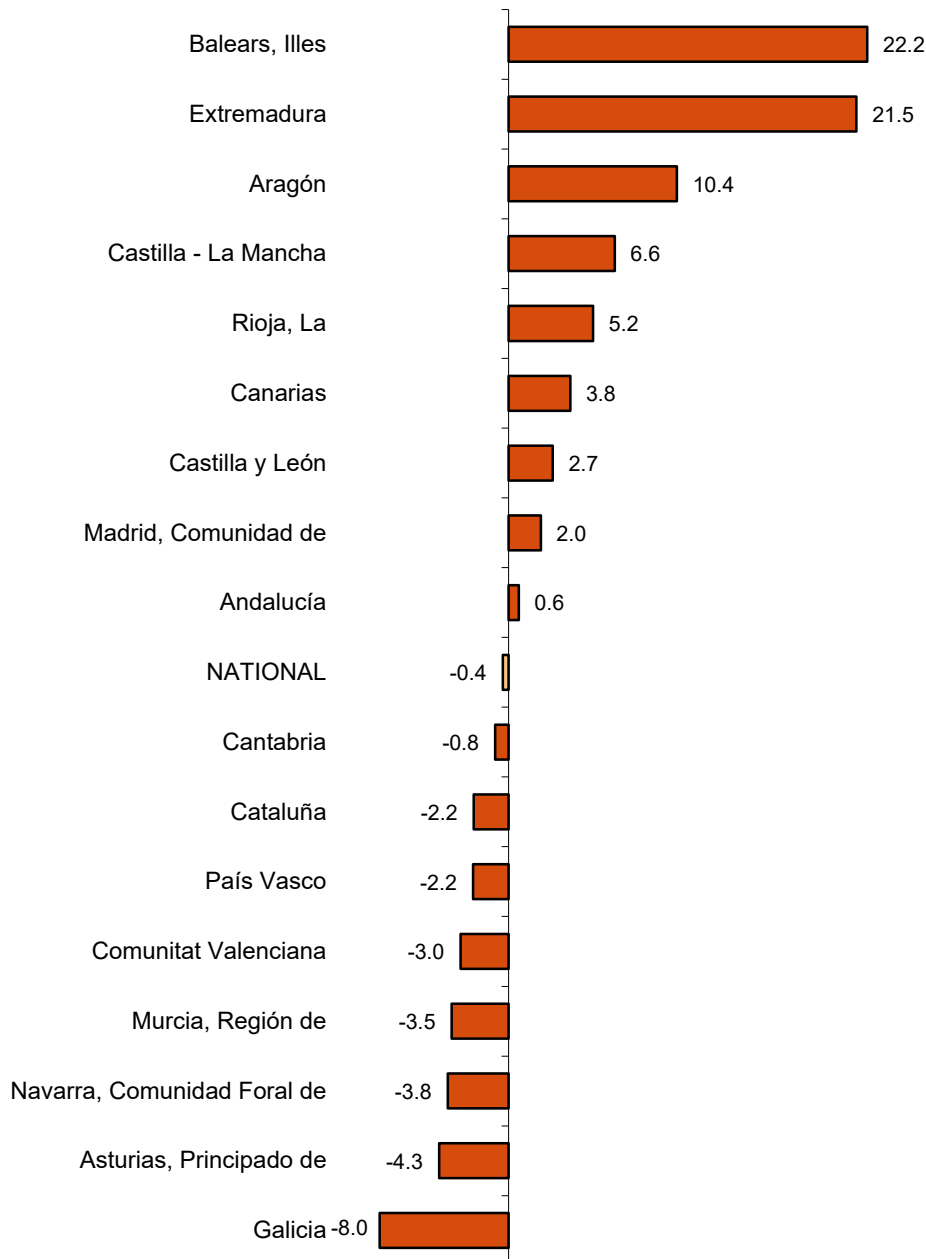
## Results by Autonomous Communities. Annual variation rates of industrial production. Original series

The annual rate of industrial production increased as compared to April 2021 in nine Autonomous Communities and decreased in the other nine.

The largest increases were recorded in Illes Balears (22.2%), Extremadura (21.5%) and Aragón (10.4%). The largest decreases were recorded in Galicia (-8.0%), Principado de Asturias (-4.3%) and Comunidad Foral de Navarra (-3.8%).

### General indices: national and by Autonomous Communities

April 2022. Annual rate (percentage)



## Data Review and Update

Coinciding with today's publication, the INE has updated the data of the IPI series corresponding to the last two months. In the case of the series adjusted for calendar effects and for seasonal and calendar effects, the series is revised from the beginning, following the INE standard. The results are available at INEBase.

## Methodological note

The Industrial Production Index (IPI) is a short-term indicator that measures the monthly evolution of the productive activity of the industrial branches, excluding construction, contained in the National Classification of Economic Activities 2009 (CNAE-2009). It therefore investigates the activities included in sections B, C, D and division 36: Water collection, treatment and supply, from section E of the CNAE-2009.

The IPI measures the joint evolution of quantity and quality, eliminating the influence of prices.

**Type of survey:** monthly continuous survey.

**Base year:** 2015.

**Population scope:** industrial establishments whose main activity is included in sections B, C, D and division 36 of CNAE-2009.

**Geographical scope:** the entire national territory.

**Sample size:** 11,500 industrial establishments and more than 1,100 products.

**Collection method:** completion of the questionnaire by the respondent using one of the following methods: internet (IRIA system), e-mail, fax, telephone or by postal mail.

For more information you can access the methodology at:

[https://www.ine.es/en/daco/daco43/metoipi15\\_en.pdf](https://www.ine.es/en/daco/daco43/metoipi15_en.pdf)

And the standardised methodological report at:

<https://www.ine.es/dynt3/metadatos/en/RespuestaDatos.html?oe=30050>

INE statistics are produced in accordance with the Code of Good Practice for European Statistics, which is the basis for the institution's quality policy and strategy. For more information see the section on [Quality at INE and the Code of Best Practices](#) on the INE website.

---

For further information see **INEbase:** [www.ine.es/en/](http://www.ine.es/en/) Twitter: [@es\\_ine](https://twitter.com/es_ine)

All press releases at: [www.ine.es/en/prensa/prensa\\_en.htm](http://www.ine.es/en/prensa/prensa_en.htm)

**Press office:** Telephone numbers: (+34) 91 583 93 63 /94 08 – [gprensa@ine.es](mailto:gprensa@ine.es)

**Information Area:** Telephone number: (+34) 91 583 91 00 – [www.ine.es/infoine/?L=1](http://www.ine.es/infoine/?L=1)

---

## Industrial Production Indices. Base 2015

**April 2022**

Provisional Data

### 1. Industrial Production Indices: General and by economic destination adjusted for seasonal and calendar effects

	Index	Rate (%)		
		Monthly	Annual	Year-to-date average
General Index	106.2	2.1	2.4	1.8
Consumer goods	108.6	3.8	6.2	4.9
- Durable consumer goods	110.9	4.3	7.8	6.2
- Non-durable consumer goods	107.3	1.8	5.2	5.2
Capital goods	104.6	2.9	2.1	0.4
Intermediate goods	109.5	6.8	-0.2	0.2
Energy	99.2	1.9	4.6	2.7

### 2. Industrial Production Indices: General and by economic destination adjusted for seasonal and calendar effects

	Index	Rate (%)	
		Annual	Year-to-date average
General Index	105.0	2.9	1.9
Consumer goods	107.8	7.0	4.9
- Durable consumer goods	109.9	8.5	5.9
- Non-durable consumer goods	107.0	5.3	4.8
Capital goods	104.8	2.6	0.6
Intermediate goods	111.2	-0.2	0.1
Energy	93.1	4.7	2.7

### 3. Industrial Production Indices: General and by economic destination. Original series

	Index	Rate (%)		Repercussion Annual
		Annual	Year-to-date average	
General Index	101.8	-0.4	2.0	
Consumer goods	103.9	1.8	5.1	0.471
- Durable consumer goods	105.6	3.5	6.1	0.071
- Non-durable consumer goods	103.7	1.7	5.0	0.400
Capital goods	100.7	-1.6	0.7	-0.357
Intermediate goods	107.6	-3.7	0.0	-1.210
Energy	92.5	3.9	2.8	0.735

**4. Industrial Production Indices: General and by branches of activity (CNAE 2009).  
Original series**

	Index	Rate (%)		Repercussion Annual
		Annual	Year-to-date average	
General Index	101.8	-0.4	2.0	
B. Mining and quarrying industries	76.5	-13.3	-6.1	-0.080
Extraction of anthracite, coal and lignite	..	..	..	..
National crude petroleum and natural gas	..	..	..	..
Extraction of metallic ores	..	..	..	..
Other mining and quarrying	89.4	-13.5	-6.3	-0.077
C. Manufacturing industry	104.5	-1.0	2.1	-0.813
Food Industry	99.2	1.0	2.5	0.113
Manufacture of beverages.	99.1	0.7	4.5	0.023
Tobacco industry.	..	..	..	..
Textile industry	100.5	1.8	9.0	0.019
Manufacture of garments	146.4	21.9	23.8	0.238
Leather and footwear industry	82.8	21.0	12.4	0.132
Manufacture of wood and of products of wood and cork, except furniture; basketmaking and wickerwork	130.9	10.8	20.6	0.155
Manufacture of paper and paper-products	104.2	0.2	1.0	0.005
Graphic arts and reproduction of recorded media	68.4	-5.0	0.0	-0.058
Manufacture of coke and refined petroleum products	101.5	9.4	10.8	0.204
Chemical Industry	108.4	-5.2	0.8	-0.361
Manufacture of pharmaceutical products	131.7	-3.6	4.8	-0.175
Rubber and plastic material transformation industry	111.4	-1.8	-0.6	-0.092
Manufacture of other non-metallic ore products	113.0	-3.8	1.1	-0.163
Metallurgy; manufacture of iron, steel and ferro-alloy products	96.0	-7.9	-4.0	-0.277
Manufacture of metal products, except machinery and equipment	105.6	-3.4	1.0	-0.288
Manufacture of computers, electronic and optical products	108.0	-8.4	6.7	-0.102
Manufacture of electrical material and equipment	116.5	4.8	1.4	0.147
Manufacture of machinery and equipment n.e.c.	123.3	2.6	6.8	0.141
Manufacture of motor vehicles, trailers and semi-trailers	82.0	-8.1	-10.8	-0.578
Manufacture of other transport equipment	85.8	-9.3	7.4	-0.236
Manufacture of furniture.	115.9	6.1	7.5	0.084
Other manufacturing industries	115.0	1.3	6.3	0.016
Repair and installation of machinery and equipment	115.0	9.2	6.1	0.259
D. Supply of electrical energy, gas, steam and air conditioning	92.1	5.5	3.0	0.768
E. Water supply, activities, waste management and decontamination*	88.8	-8.7	-4.5	-0.236

\* It only includes Water collection, treatment and supply

(..) Data not available due to statistical secrecy.

## 5. Industrial production indices: national and by Autonomous Community. Original series

	Index	Rate (%)	
		Annual	Year-to-date average
National	101.8	-0.4	2.0
Andalucía	92.1	0.6	5.2
Aragón	105.9	10.4	3.8
Asturias, Principado de	101.1	-4.3	3.4
Balears, Illes	86.6	22.2	14.7
Canarias	88.6	3.8	4.4
Cantabria	108.1	-0.8	-1.1
Castilla y León	91.8	2.7	-5.4
Castilla-La Mancha	102.8	6.6	4.6
Cataluña	105.4	-2.2	0.6
Comunitat Valenciana	102.1	-3.0	1.5
Extremadura	107.5	21.5	6.0
Galicia	97.2	-8.0	-6.5
Madrid, Comunidad de	109.3	2.0	4.1
Murcia, Región de	114.0	-3.5	7.1
Navarra, Comunidad Foral de	106.0	-3.8	6.1
País Vasco	98.0	-2.2	3.9
Rioja, La	87.2	5.2	5.0

More detailed information by Autonomous Community may be obtained at:

Andalucía	<a href="http://www.juntadeandalucia.es/institutodeestadisticaycartografia">www.juntadeandalucia.es/institutodeestadisticaycartografia</a>
Aragón	<a href="http://www.aragon.es/iaest/ipi">www.aragon.es/iaest/ipi</a>
Principado de Asturias	<a href="http://www.sadei.es">www.sadei.es</a>
Illes Balears	<a href="http://www.ibestat.caib.es">www.ibestat.caib.es</a>
Canarias	<a href="http://www.gobiernodecanarias.org/istac">www.gobiernodecanarias.org/istac</a>
Cantabria	<a href="http://www.icane.es">www.icane.es</a>
Castilla y León	<a href="http://www.jcyl.es/estadistica">www.jcyl.es/estadistica</a>
Castilla - La Mancha	<a href="http://www.jccm.es/estadistica">www.jccm.es/estadistica</a>
Cataluña	<a href="http://www.idescat.cat">www.idescat.cat</a>
Comunitat Valenciana	<a href="http://www.ive.es">www.ive.es</a>
Extremadura	<a href="http://estadistica.juntaex.es">http://estadistica.juntaex.es</a>
Galicia	<a href="http://www.ige.xunta.es">www.ige.xunta.es</a>
Comunidad de Madrid	<a href="http://www.madrid.org/iestadis">www.madrid.org/iestadis</a>
Región de Murcia	<a href="http://econet.carm.es">http://econet.carm.es</a>
La Rioja	<a href="http://www.larioja.org">www.larioja.org</a>