

**Industrial Production Indices (IPI). Base 2015**  
May 2022 Provisional Data

**After adjusting for seasonal and calendar effects, the monthly variation of the Industrial Production Index stood at -0.2%,**

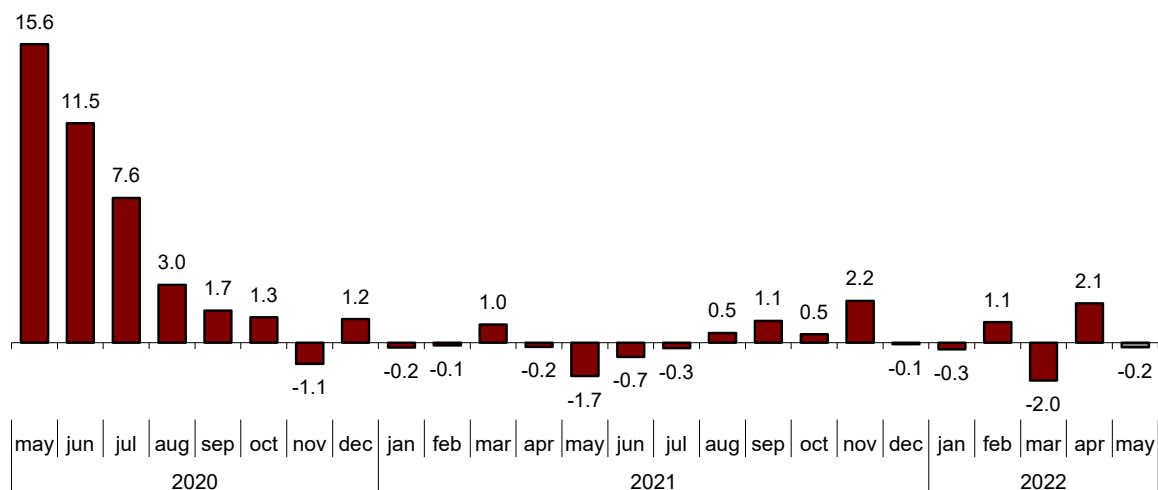
**The annual rate of the Industrial Production Index stands at 3.8% in the series adjusted for seasonal and calendar effects and at 6.5% in the original series**

**Monthly evolution of industrial production**

The monthly variation of the Industrial Production Index (IPI) between the months of May and April, eliminating seasonal and calendar effects, is -0.2%. This rate is 2.3 points lower than that observed in April.

**General Industrial Production Index**

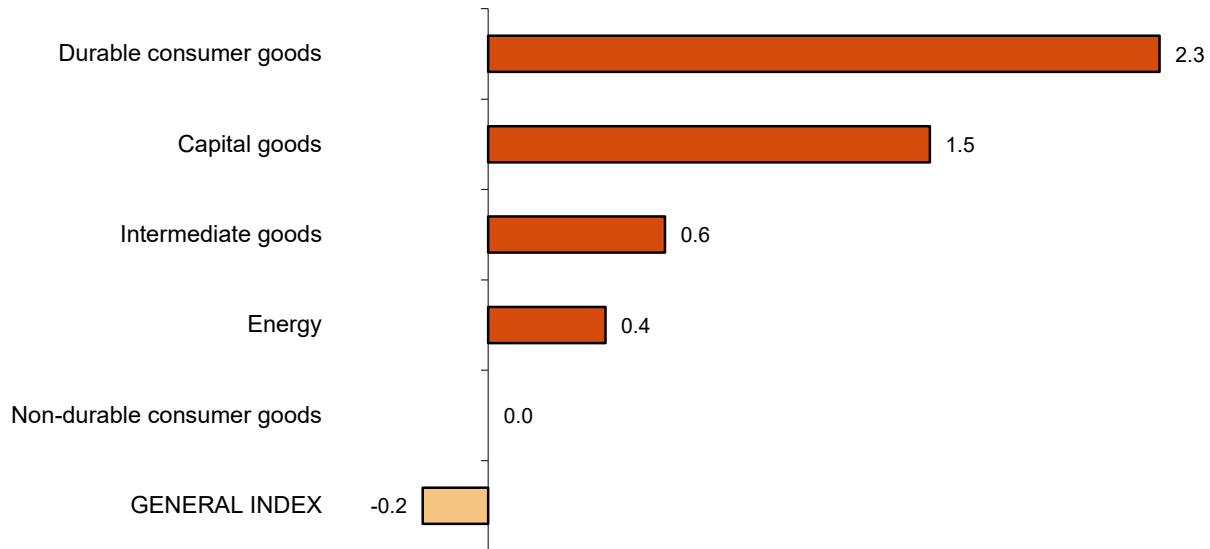
Adjusted for seasonal and calendar effects. Monthly rate (percentage)



All sectors showed positive monthly rates. It is worth highlighting the increase in *Durable consumer goods* (2.3%) followed by *Capital goods* (1.5%).

**Industrial Production Indices: General and by economic destination**

Adjusted for seasonal and calendar effects. May 2022. Monthly rate (percentage)



In a more detailed analysis, it is possible to observe the branches of activity with the highest and lowest monthly rates in the month of May.

**Branches of activity with the highest monthly rates of the industrial production index adjusted for seasonal and calendar effects**

Activity (Division from CNAE 2009)	Monthly rate (%)
Other mining and quarrying	12.1
Manufacture of coke and refined petroleum products	4.4
Extraction of anthracite, coal and lignite	4.2

**Branches of activity with the lowest monthly rates of the industrial production index adjusted for seasonal and calendar effects**

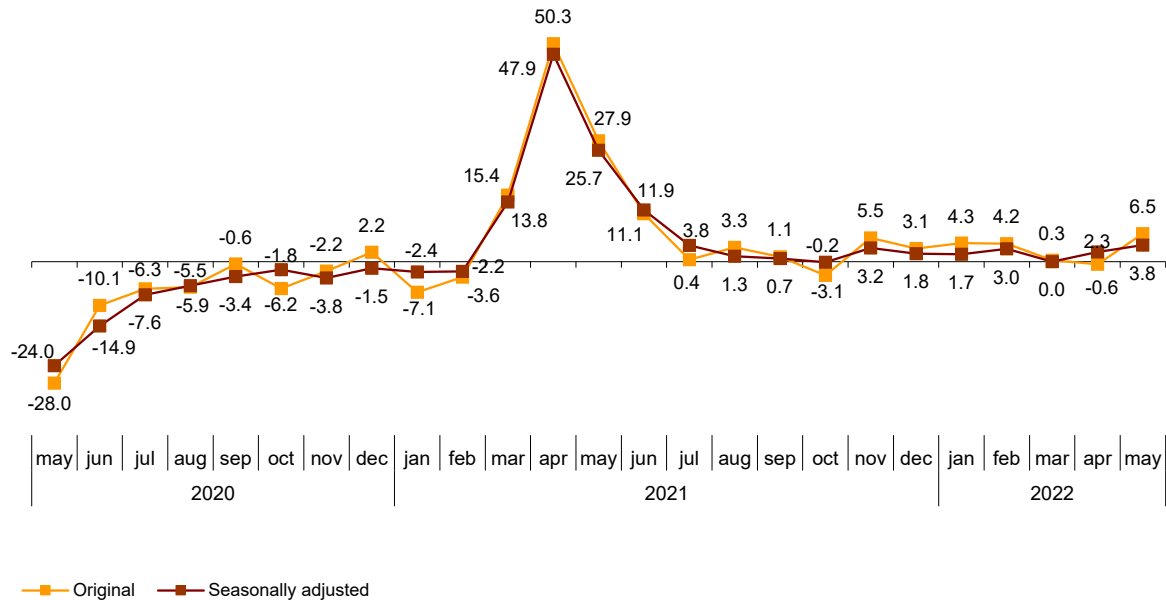
Activity (Division from CNAE 2009)	Monthly rate (%)
Manufacture of garments	-11.4
Manufacture of electrical material and equipment	-7.1
Tobacco industry	-4.0

**Annual evolution of industrial production**

The Industrial Production Index corrected for seasonal and calendar effects presents a variation of 3.8% in May with respect to the same month of the previous year. This rate is 1.5 points higher than that registered in April.

The original IPI series experienced an annual variation of 6.5%. This rate is 7.1 points higher than that of April.

## General Industrial Production Index Annual rate (percentage)



All sectors showed positive annual rates. It is worth highlighting the increase in *Non-durable consumer goods* (6.3%) followed by *Durable consumer goods* (6.2%).

### Annual rates of industrial production indices: General and by economic destination of the goods

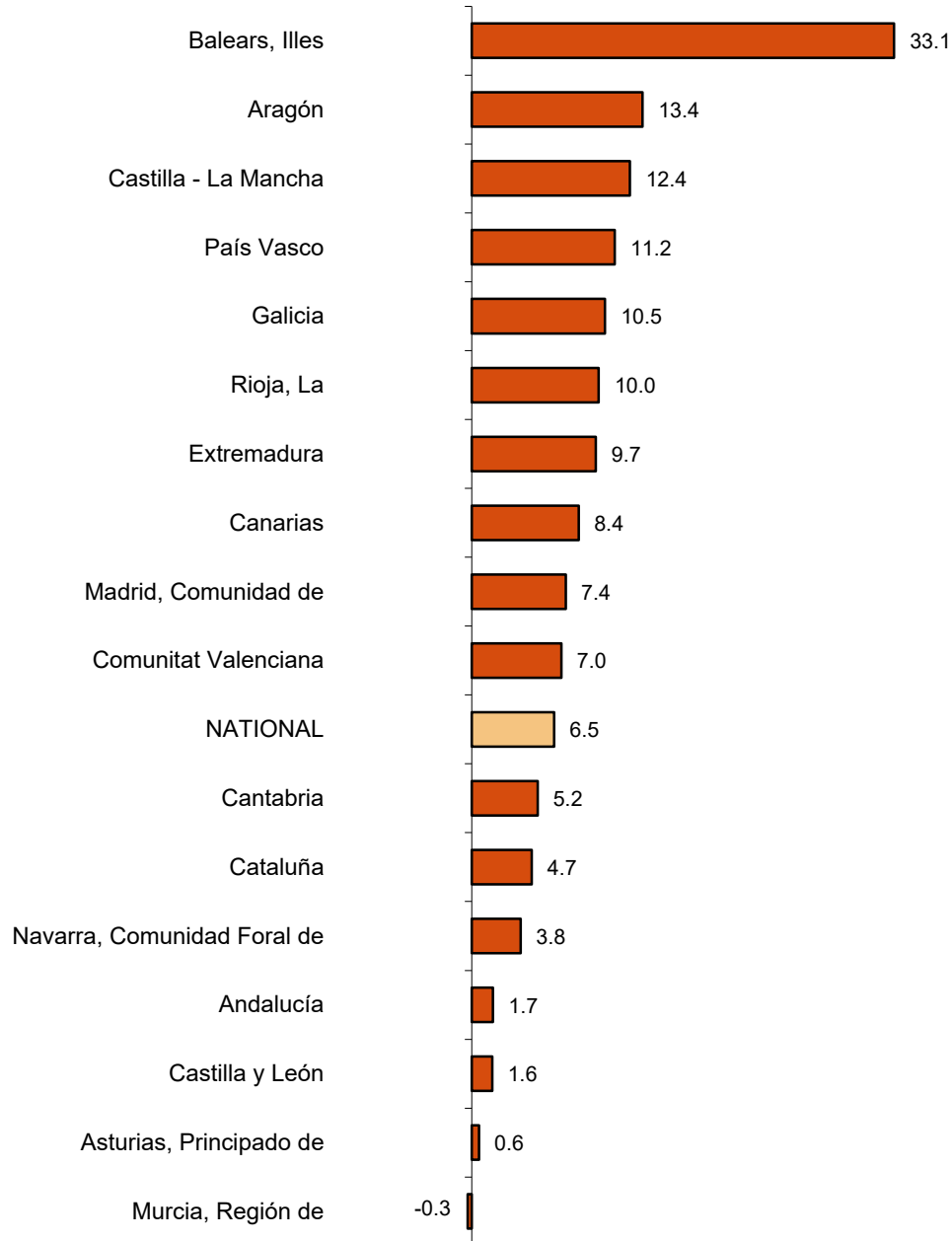
	Original index Annual rate (%)	Seasonally adjusted index Annual rate (%)
General Index	6.5	3.8
Consumer goods	10.3	7.5
- Durable consumer goods	11.3	6.2
- Non-durable consumer goods	10.2	6.3
Capital goods	7.4	4.1
Intermediate goods	3.0	1.0
Energy	6.4	5.7

### Results by Autonomous Communities. Annual variation rates of industrial production. Original series

The annual rate of industrial production increased as compared to May 2021 in 16 Autonomous Communities and fell in only one autonomous community.

The largest increases were recorded in Illes Balears (33.1%), Aragón (13.4%) and Castilla - La Mancha (12.4%). The only increase was recorded in Region of Murcia (-0.3%).

**General indices: national and by Autonomous Communities**  
May 2022. Annual rate (percentage)



## Data Review and Update

Coinciding with today's publication, the INE has updated the data of the IPI series corresponding to the last two months. In the case of the series adjusted for calendar effects and for seasonal and calendar effects, the series is revised from the beginning, following the INE standard. The results are available at INEBase.

## Methodological note

The Industrial Production Index (IPI) is a short-term indicator that measures the monthly evolution of the productive activity of the industrial branches, excluding construction, contained in the National Classification of Economic Activities 2009 (CNAE-2009). It therefore investigates the activities included in sections B, C, D and division 36: Water collection, treatment and supply, from section E of the CNAE-2009.

The IPI measures the joint evolution of quantity and quality, eliminating the influence of prices.

Type of survey: monthly continuous survey.

**Base year:** 2015.

**Population scope:** industrial establishments whose main activity is included in sections B, C, D and division 36 of CNAE-2009.

**Geographical scope:** the entire national territory.

**Sample size:** 11,500 industrial establishments and more than 1,100 products.

**Collection method:** completion of the questionnaire by the respondent using one of the following methods: internet (IRIA system), e-mail, fax, telephone or by postal mail.

For more information the methodology can be accessed at:

[https://www.ine.es/en/daco/daco43/metoipi15\\_en.pdf](https://www.ine.es/en/daco/daco43/metoipi15_en.pdf)

And the standardised methodological report at:

<https://www.ine.es/dynt3/metadatos/en/RespuestaDatos.html?oe=30050>

INE statistics are produced in accordance with the Code of Good Practice for European Statistics, which is the basis for the institution's quality policy and strategy. For more information see the section on [Quality at INE and the Code of Best Practices](#) on the INE website.

---

For further information see **INEbase:** [www.ine.es/en/](http://www.ine.es/en/) Twitter: [@es\\_ine](https://twitter.com/es_ine)

All press releases at: [www.ine.es/en/prensa/prensa\\_en.htm](http://www.ine.es/en/prensa/prensa_en.htm)

**Press Office:** Telephone numbers: (+34) 91 583 93 63 /94 08 – [gprensa@ine.es](mailto:gprensa@ine.es)

**Information Area:** Telephone number: (+34) 91 583 91 00 – [www.ine.es/infoine/?L=1](http://www.ine.es/infoine/?L=1)

---

## Industrial Production Indices. Base 2015

**May 2022**

Provisional Data

### 1. Industrial Production Indices: General and by economic destination adjusted for seasonal and calendar effects

	Index	Rate (%)		
		Monthly	Annual	Year-to-date average
General Index	105.9	-0.2	3.8	2.2
Consumer goods	107.8	-0.4	7.5	5.2
- Durable consumer goods	114.1	2.3	6.2	6.4
- Non-durable consumer goods	107.2	0.0	6.3	5.3
Capital goods	106.4	1.5	4.1	1.2
Intermediate goods	110.4	0.6	1.0	0.4
Energy	99.8	0.4	5.7	3.3

### 2. Industrial Production Indices: General and by economic destination adjusted for seasonal and calendar effects

	Index	Rate (%)	
		Annual	Year-to-date average
General Index	111.5	4.5	2.4
Consumer goods	113.0	7.7	5.3
- Durable consumer goods	124.2	8.2	6.3
- Non-durable consumer goods	112.2	7.7	5.2
Capital goods	113.3	4.8	1.3
Intermediate goods	120.7	1.1	0.3
Energy	95.0	5.9	3.3

### 3. Industrial Production Indices: General and by economic destination. Original series

	Index	Rate (%)		Repercussion Annual
		Annual	Year-to-date average	
General Index	112.3	6.5	2.9	
Consumer goods	114.1	10.3	6.0	2.616
- Durable consumer goods	125.4	11.3	7.1	0.244
- Non-durable consumer goods	113.1	10.2	5.9	2.373
Capital goods	114.4	7.4	2.0	1.660
Intermediate goods	121.6	3.0	0.7	1.004
Energy	95.2	6.4	3.5	1.181

**4. Industrial Production Indices: General and by branches of activity (CNAE 2009).  
Original series**

	Index	Rate (%)		Repercussion Annual
		Annual	Year-to-date average	
<b>General Index</b>	112.3	6.5	2.9	
<b>B. Mining and quarrying industries</b>	91.3	-1.4	-5.1	-0.009
Extraction of anthracite, coal and lignite	..	..	..	..
National crude petroleum and natural gas	..	..	..	..
Extraction of metallic ores	..	..	..	..
Other mining and quarrying	107.8	-1.4	-5.3	-0.008
<b>C. Manufacturing industry</b>	116.9	6.8	3.0	5.621
Food Industry	106.6	5.5	2.9	0.624
Manufacture of beverages.	117.8	11.4	6.4	0.376
Tobacco industry.	..	..	..	..
Textile industry	114.0	7.4	9.3	0.080
Manufacture of garments	107.9	24.8	23.3	0.188
Leather and footwear industry	90.5	37.4	16.9	0.220
Manufacture of wood and of products of wood and cork, except furniture; basketmaking and wickerwork	142.8	18.1	20.3	0.258
Manufacture of paper and paper-products	112.7	4.0	1.6	0.102
Graphic arts and reproduction of recorded media	75.1	4.5	0.7	0.050
Manufacture of coke and refined petroleum products	107.6	15.8	11.9	0.332
<b>Chemical Industry</b>	118.6	3.4	1.4	0.231
Manufacture of pharmaceutical products	148.7	10.8	5.7	0.502
Rubber and plastic material transformation industry	126.8	6.7	0.9	0.344
Manufacture of other non-metallic ore products	139.3	7.3	2.7	0.335
Metallurgy; manufacture of iron, steel and ferro-alloy products	107.1	-3.6	-4.3	-0.129
Manufacture of metal products, except machinery and equipment	123.1	5.7	2.1	0.494
Manufacture of computers, electronic and optical products	120.9	-4.0	4.4	-0.050
Manufacture of electrical material and equipment	131.5	2.5	1.3	0.085
Manufacture of machinery and equipment n.e.c.	140.2	9.0	7.0	0.503
Manufacture of motor vehicles, trailers and semi-trailers	92.6	6.0	-7.7	0.407
Manufacture of other transport equipment	105.8	5.5	6.9	0.143
Manufacture of furniture.	136.0	14.7	9.1	0.211
Other manufacturing industries	128.6	13.0	7.6	0.155
Repair and installation of machinery and equipment	118.8	5.4	5.3	0.158
<b>D. Supply of electrical energy, gas, steam and air conditioning</b>	91.1	6.1	3.6	0.820
<b>E. Water supply, activities, waste management and decontamination*</b>	110.1	1.0	-3.2	0.030

\* It only includes Water collection, treatment and supply

(..) Data not available due to statistical secrecy.

## 5. Industrial production indices: national and by Autonomous Community. Original series

	Index	Rate (%)	
		Annual	Year-to-date average
National	112.3	6.5	2.9
Andalucía	98.1	1.7	4.4
Aragón	118.8	13.4	5.6
Asturias, Principado de	105.9	0.6	2.3
Balears, Illes	91.5	33.1	18.2
Canarias	92.0	8.4	5.1
Cantabria	125.7	5.2	0.1
Castilla y León	96.3	1.6	-4.1
Castilla-La Mancha	109.4	12.4	6.4
Cataluña	115.0	4.7	1.3
Comunitat Valenciana	120.1	7.0	2.7
Extremadura	118.6	9.7	6.7
Galicia	107.2	10.5	-2.9
Madrid, Comunidad de	114.5	7.4	4.6
Murcia, Región de	121.9	-0.3	5.4
Navarra, Comunidad Foral de	120.1	3.8	5.2
País Vasco	120.0	11.2	5.6
Rioja, La	94.7	10.0	6.0

### More detailed information by Autonomous Community may be obtained at:

Andalucía	<a href="http://www.juntadeandalucia.es/institutodeestadisticaycartografia">www.juntadeandalucia.es/institutodeestadisticaycartografia</a>
Aragón	<a href="http://www.aragon.es/iaest/ipi">www.aragon.es/iaest/ipi</a>
Principado de Asturias	<a href="http://www.sadei.es">www.sadei.es</a>
Illes Balears	<a href="http://www.ibestat.caib.es">www.ibestat.caib.es</a>
Canarias	<a href="http://www.gobiernodecanarias.org/istac">www.gobiernodecanarias.org/istac</a>
Cantabria	<a href="http://www.icane.es">www.icane.es</a>
Castilla y León	<a href="http://www.jcyl.es/estadistica">www.jcyl.es/estadistica</a>
Castilla - La Mancha	<a href="http://www.jccm.es/estadistica">www.jccm.es/estadistica</a>
Cataluña	<a href="http://www.idescat.cat">www.idescat.cat</a>
Comunitat Valenciana	<a href="http://www.ive.es">www.ive.es</a>
Extremadura	<a href="http://estadistica.juntaex.es">http://estadistica.juntaex.es</a>
Galicia	<a href="http://www.ige.xunta.es">www.ige.xunta.es</a>
Comunidad de Madrid	<a href="http://www.madrid.org/iestadis">www.madrid.org/iestadis</a>
Región de Murcia	<a href="http://econet.carm.es">http://econet.carm.es</a>
La Rioja	<a href="http://www.larioja.org">www.larioja.org</a>