

07 August 2020

**Industrial Production Indices (IPI). Base 2015**  
June 2020. Provisional data

**The monthly variation of the Industrial Production Index stands at 14.0%, after adjusting for seasonal and calendar effects**

**The annual rate of the Industrial Production Index stands at -14.0% in the series adjusted for seasonal and calendar effects and at -9.6% in the original series**

**COVID-19's Effects on the June IPI**

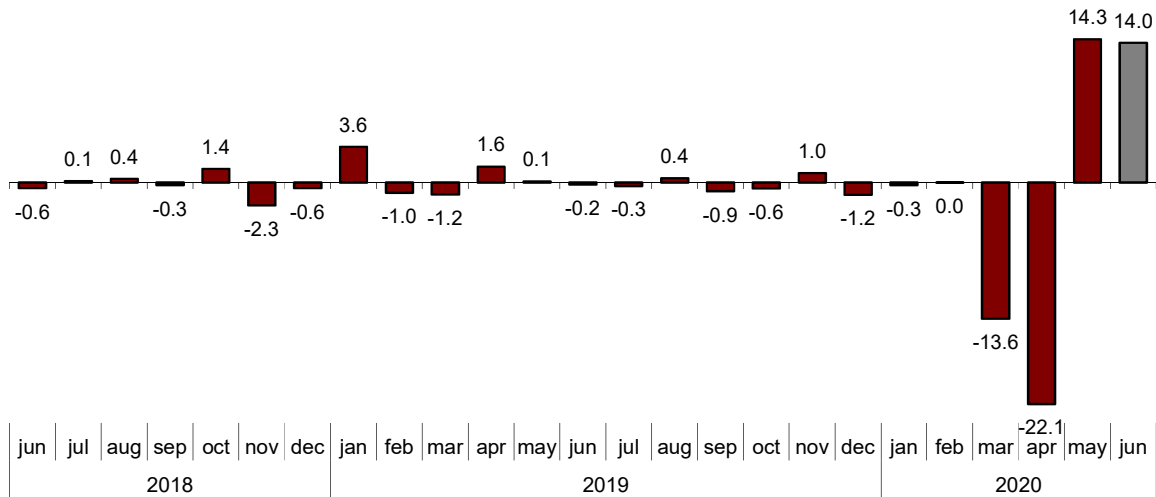
- During the month of June, the different territories continued to progress through the de-escalation process, until the “new normality” was declared on June 21. According to Royal Decree 555/2020, the state of alarm ended on said date. The industry recovered rhythm during this month, with a growth of 14% compared to May.
- Compared to the previous month, the greatest dynamism was still observed in the industry of *Durable consumer goods* (38.0%) and in *Capital goods* (30.9%), which had previously suffered the greatest drop.
- In global terms, the industry has not yet reached the levels of a year ago, with an estimated year-on-year production decrease of 14.0%. *Clothing manufacturing* (-34.2%) and *Other manufacturing industries* (-27.5%) recorded the largest decreases.
- For their part, the production of the *Extractive Industries* (11.2%) and the *Manufacture of pharmaceutical products* (10.7%) increased as compared to June 2019.
- Compared to the first half of 2019, the industry recorded a 15.2% decrease. *Durable consumer goods* (-26.1%) and *Capital goods* (-23.9%) show the greatest decreases; while *Non-durable consumer goods* (-9.2%) have withstood the crisis the best.

## Monthly evolution of industrial production

After adjusting for seasonal and calendar effects, the monthly variation of the Industrial Production Index (IPI) between June and May stood at 14.0%. This rate is 0.3 points lower than that observed in May.

### General Industrial Production Index

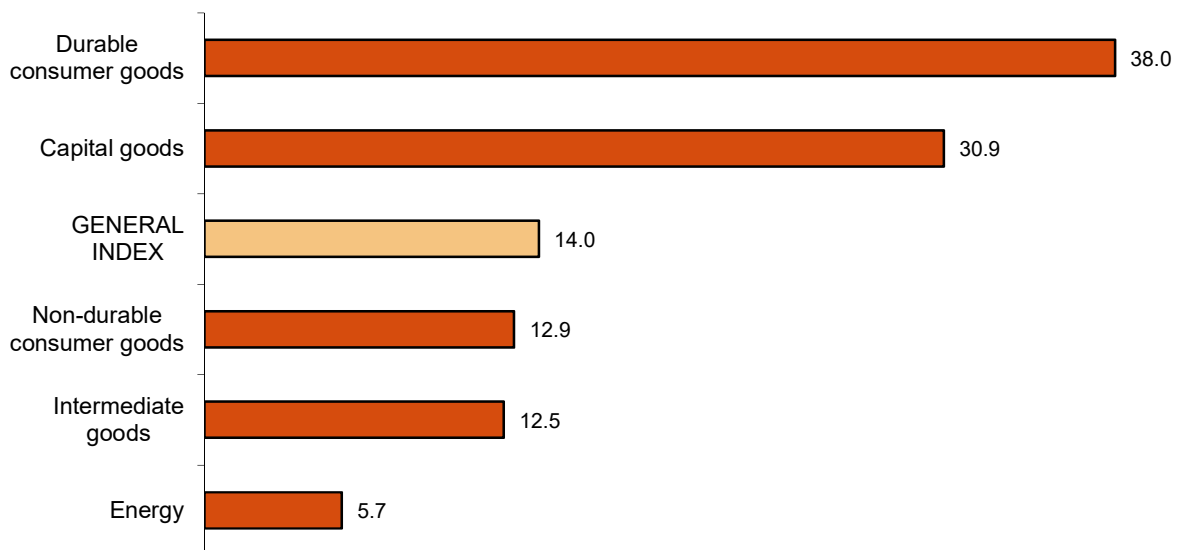
Adjusted for seasonal and calendar effects. Monthly rate (percentage)



All sectors presented positive monthly rates, with the increase in *Durable consumer goods* (38.0%) and *Capital goods* (30.9%) being of particular note. For its part, *Energy* (5.7%) increased the least.

### Industrial Production Indices: General and by economic destination

Adjusted for seasonal and calendar effects. June 2020. Monthly rate (percentage)



A more detailed analysis shows the branches of activity with the greatest and lowest monthly rates in the month of June.

## Branches of activity with the highest monthly rates of the industrial production index adjusted for seasonal and calendar effects

Rama de actividad (División de la CNAE 2009)	Tasa mensual (%)
Confección de prendas de vestir	168,6
Fabricación de vehículos de motor, remolques y semirremolques	95,9
Fabricación de muebles	55,2

## Branches of activity with the lowest monthly rates of the industrial production index adjusted for seasonal and calendar effects

Rama de actividad (División de la CNAE 2009)	Tasa mensual (%)
Fabricación de productos farmacéuticos	-2,2
Fabricación de otro material de transporte	0,2
Industria del tabaco	1,1

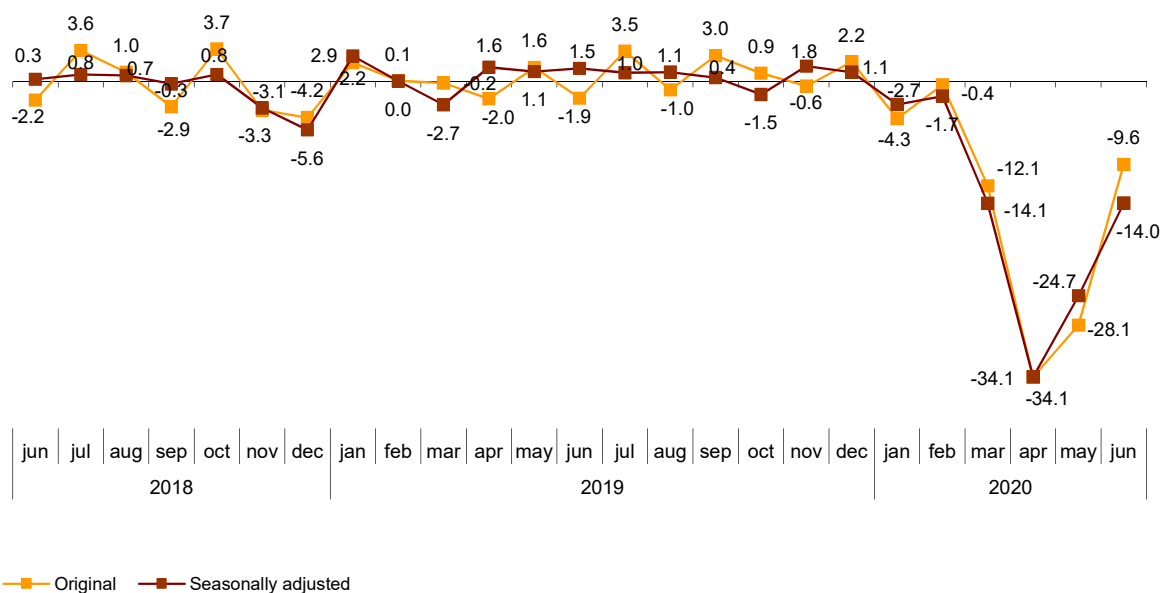
## Annual evolution of industrial production

The Industrial Production Index, adjusted for seasonal and calendar effects, presented in June a variation of -14.0% compared to the same month of the previous year. This rate is 10.7 points higher than that registered in May.

The original IPI series experienced an annual variation of -9.6%. This rate is 18.5 points higher than in May.

## General Industrial Production Index

Annual rate (percentage)



In the indexes adjusted for seasonal and calendar effects, all sectors presented negative annual rates. The largest decreases were registered in *Capital goods* (-17.9%) and *Durable consumer goods* (-16.0%).

## Annual and year-to-date average rates for industrial production indices: General and by economic destination of the goods

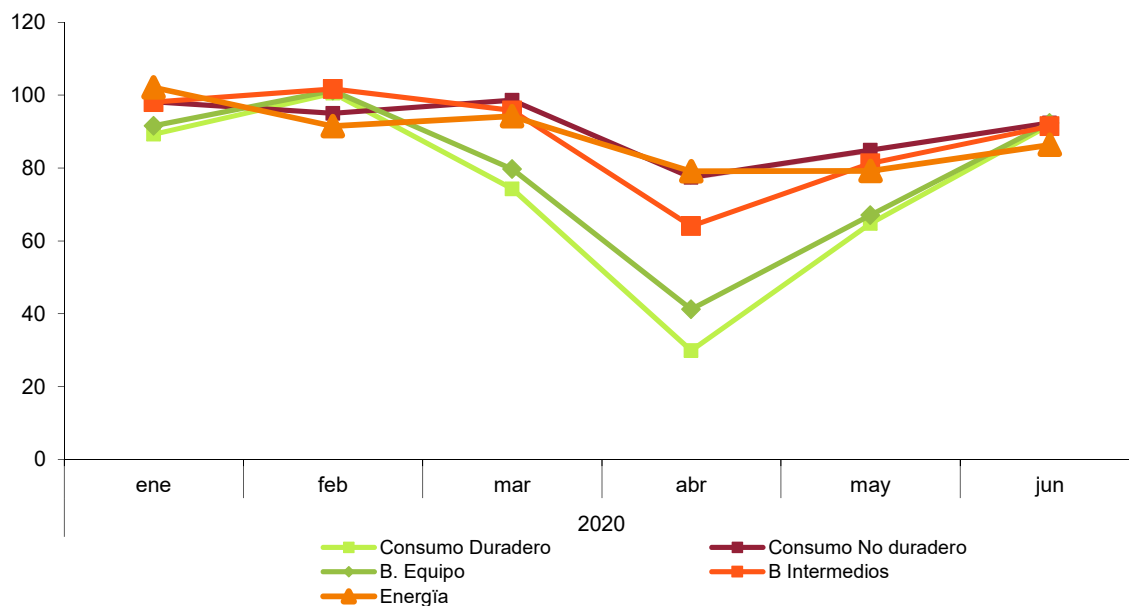
	Original index Annual rate (%)	Seasonally adjusted index Annual rate (%)
General Index	-9.6	-14.0
Consumer goods	-3.6	-9.5
- Durable consumer goods	-9.3	-16.0
- Non-durable consumer goods	-3.0	-7.3
Capital goods	-12.7	-17.9
Intermediate goods	-10.2	-14.5
Energy	-12.1	-13.1

The sectors whose behaviour has been the most stable during the crisis are *Non-durable consumer goods* and *Energy*, although they registered decreases of 9.2% and 10.0% during the first half of the year compared to the same period of 2019.

On the other hand, the production of *Durable consumer goods* and *Capital goods* suffered a sharp decline, with a peak in April and a V-shaped recovery in May and June that has not yet reached June 2019 levels.

## Industrial Production Index by economic destination of the goods (2019 average=100)

Original series



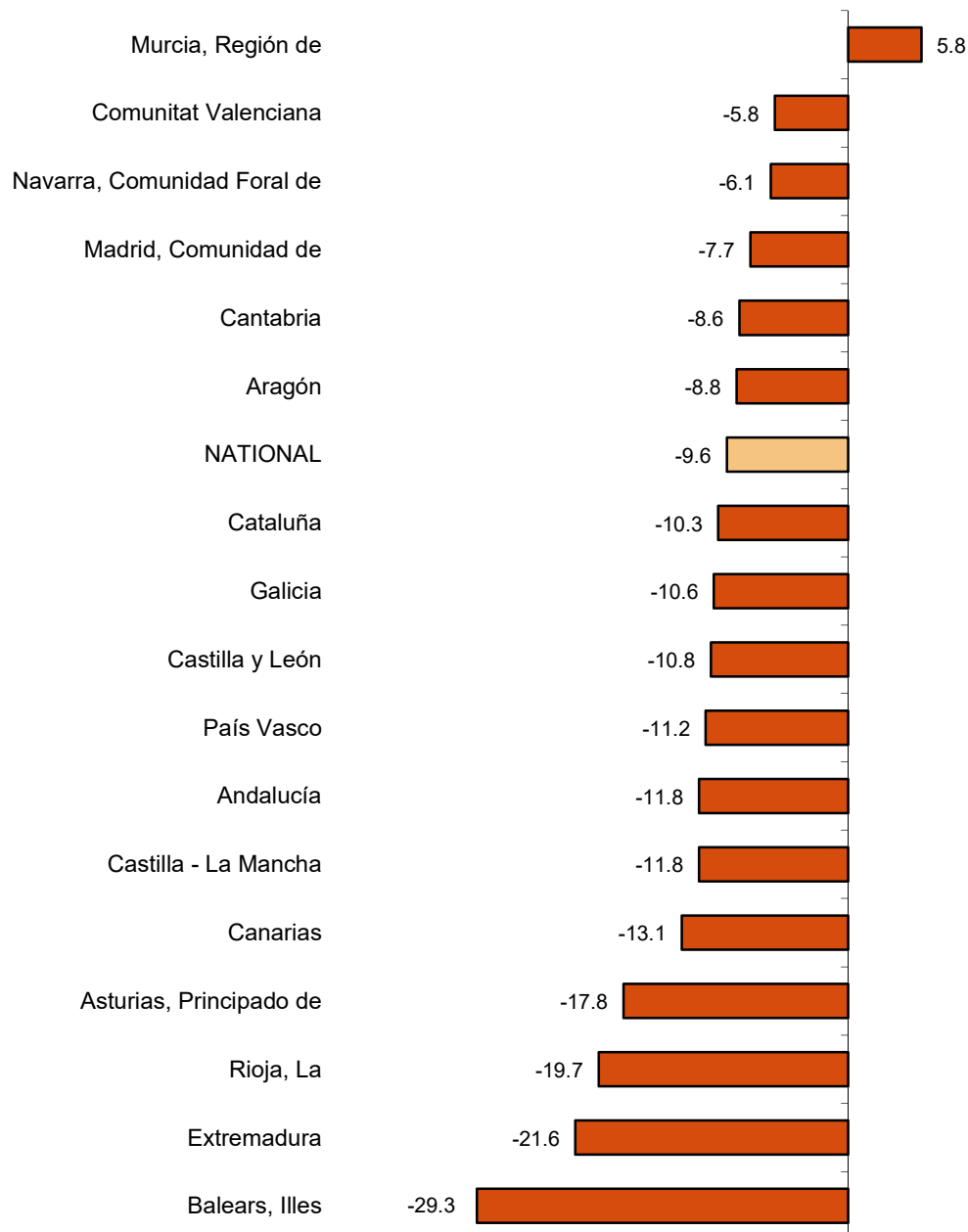
## Results by Autonomous Communities. Annual variation rates of industrial production. Original series

The annual industrial production rate increased compared to June 2019 in the Región de Murcia (5.8%) and decreased in the other 16 autonomous communities.

The greatest increases were recorded in Illes Balears (-29.3%), Extremadura (-21.6%) and La Rioja (-19.7%).

### General indices: national and by Autonomous Communities

June 2020. Annual rate (percentage)



## Data Review and Update

Coinciding with today's publication, the INE has updated the data of the IPI series corresponding to the last two months. In the case of the series adjusted for calendar effects and for seasonal and calendar effects, the series is revised from the beginning, following the INE standard. The results are available at INEBase.

## Methodological note

The **Industrial Production Index (IPI)** is a short-term indicator that measures the monthly evolution of the productive activity of the industrial branches, excluding construction, contained in the National Classification of Economic Activities 2009 (CNAE-2009). It therefore investigates the activities included in sections B, C, D and division 36: Water collection, treatment and supply, from section E of the CNAE-2009.

The IPI measures the joint evolution of quantity and quality, eliminating the influence of prices.

**Type of survey:** monthly continuous survey.

**Base year:** 2015.

**Population scope:** industrial establishments whose main activity is included in sections B, C, D and division 36 of the CNAE-2009.

**Geographical scope:** the entire national territory.

**Sample size:** 11,500 industrial establishments and more than 1,100 products.

**Collection method:** completion of the questionnaire by the respondent using one of the following methods: internet (IRIA system), e-mail, fax, telephone or by postal mail.

For more information you can access the methodology at:

[https://www.ine.es/en/daco/daco43/metoipi15\\_en.pdf](https://www.ine.es/en/daco/daco43/metoipi15_en.pdf)

And the standardised methodological report at:

<https://www.ine.es/dynt3/metadatos/en/RespuestaDatos.html?oe=30050>

---

For further information see **INEbase:** [www.ine.es/en/](http://www.ine.es/en/) Twitter: [@es\\_ine](https://twitter.com/es_ine)

All press releases at: [www.ine.es/en/prensa/prensa\\_en.htm](http://www.ine.es/en/prensa/prensa_en.htm)

**Press Office:** Telephone numbers: (+34) 91 583 93 63 /94 08 – [gprensa@ine.es](mailto:gprensa@ine.es)

**Information Area:** Telephone number: (+34) 91 583 91 00 – [www.ine.es/infoine/?L=1](http://www.ine.es/infoine/?L=1)

---

## Industrial Production Indices. Base 2015

**June 2020**

Provisional Data

### 1. Industrial Production Indices: General and by economic destination adjusted for seasonal and calendar effects

	Index	Rate (%)		
		Monthly	Annual	Year-to-date average
General Index	91.7	14.0	-14.0	-15.2
Consumer goods	93.8	11.0	-9.5	-10.9
- Durable consumer goods	87.4	38.0	-16.0	-26.1
- Non-durable consumer goods	96.6	12.9	-7.3	-9.2
Capital goods	93.9	30.9	-17.9	-23.9
Intermediate goods	92.0	12.5	-14.5	-15.2
Energy	88.4	5.7	-13.1	-10.0

### 2. Industrial Production Indices: General and by economic destination adjusted for seasonal and calendar effects

	Index	Rate (%)	
		Annual	Year-to-date average
General Index	95.5	-14.0	-15.4
Consumer goods	94.8	-9.4	-11.0
- Durable consumer goods	94.0	-15.9	-26.3
- Non-durable consumer goods	94.8	-8.7	-9.7
Capital goods	103.4	-17.9	-24.4
Intermediate goods	97.9	-14.5	-15.2
Energy	85.2	-13.3	-10.0

### 3. Industrial Production Indices: General and by economic destination. Original series

	Index	Rate (%)		Repercussion Annual
		Annual	Year-to-date average	
General Index	96.3	-9.6	-14.8	
Consumer goods	95.7	-3.6	-10.7	-0.858
- Durable consumer goods	95.1	-9.3	-25.7	-0.184
- Non-durable consumer goods	95.7	-3.0	-9.4	-0.674
Capital goods	104.4	-12.7	-23.7	-3.174
Intermediate goods	98.7	-10.2	-14.8	-3.147
Energy	85.5	-12.1	-9.3	-2.398

**4. Industrial Production Indices: General and by branches of activity (CNAE 2009).  
Original series**

	Index	Rate (%)		Repercussion Annual
		Annual	Year-to-date average	
General Index	96.3	-9.6	-14.8	
B. Mining and quarrying industries	98.4	11.2	-8.7	0.065
Extraction of anthracite, coal and lignite	..	..	..	..
National crude petroleum and natural gas	..	..	..	..
Extraction of metallic ores	..	..	..	..
Other mining and quarrying	106.4	0.9	-17.1	0.005
C. Manufacturing industry	98.6	-9.5	-16.2	-7.767
Food Industry	95.0	-3.3	-6.4	-0.358
Manufacture of beverages.	96.8	-7.2	-13.3	-0.231
Tobacco industry.	..	..	..	..
Textile industry	88.0	-9.9	-23.2	-0.099
Manufacture of garments	56.7	-34.2	-38.9	-0.256
Leather and footwear industry	60.2	-23.3	-27.0	-0.162
Manufacture of wood and of products of wood and cork, except furniture; basketmaking and wickerwork	90.9	-20.3	-24.2	-0.269
Manufacture of paper and paper-products	92.4	-6.2	-4.0	-0.142
Graphic arts and reproduction of recorded media	68.4	-12.9	-24.8	-0.155
Manufacture of coke and refined petroleum products	78.2	-23.0	-16.0	-0.524
Chemical Industry	104.1	-1.8	-5.9	-0.109
Manufacture of pharmaceutical products	126.3	10.7	1.6	0.419
Rubber and plastic material transformation industry	100.7	-10.2	-17.6	-0.488
Manufacture of other non-metallic ore products	109.3	-2.9	-17.4	-0.112
Metallurgy; manufacture of iron, steel and ferro-alloy products	84.6	-23.2	-19.9	-0.824
Manufacture of metal products, except machinery and equipment	102.5	-12.4	-20.4	-1.069
Manufacture of computers, electronic and optical products	116.5	-1.4	-6.0	-0.017
Manufacture of electrical material and equipment	104.0	-2.4	-8.3	-0.068
Manufacture of machinery and equipment n.e.c.	118.9	-9.0	-15.9	-0.510
Manufacture of motor vehicles, trailers and semi-trailers	95.2	-16.8	-34.4	-1.474
Manufacture of other transport equipment	98.0	-18.5	-20.8	-0.570
Manufacture of furniture.	98.4	-11.9	-29.1	-0.159
Other manufacturing industries	93.7	-27.5	-30.8	-0.367
Repair and installation of machinery and equipment	102.4	-8.3	-16.7	-0.240
D. Supply of electrical energy, gas, steam and air conditioning	80.8	-11.4	-8.8	-1.609
E. Water supply, activities, waste management and decontamination*	120.1	-7.6	-6.1	-0.266

\* It only includes Water collection, treatment and supply

(..) Data not available due to statistical secrecy.



## 5. Industrial production indices: national and by Autonomous Community. Original series

	Index	Rate (%)	
		Annual	Year-to-date average
National	96.3	-9.6	-14.8
Andalucía	90.4	-11.8	-16.8
Aragón	101.7	-8.8	-17.5
Asturias, Principado de	84.7	-17.8	-16.8
Balears, Illes	67.4	-29.3	-24.0
Canarias	78.6	-13.1	-11.1
Cantabria	105.0	-8.6	-17.1
Castilla y León	89.7	-10.8	-17.9
Castilla-La Mancha	90.0	-11.8	-13.0
Cataluña	94.8	-10.3	-15.5
Comunitat Valenciana	102.2	-5.8	-13.3
Extremadura	79.6	-21.6	-13.4
Galicia	89.3	-10.6	-15.2
Madrid, Comunidad de	102.5	-7.7	-11.5
Murcia, Región de	126.0	5.8	-4.5
Navarra, Comunidad Foral de	110.0	-6.1	-12.9
País Vasco	97.8	-11.2	-18.0
Rioja, La	70.6	-19.7	-15.8

More detailed information by Autonomous Community may be obtained at:

Andalucía	<a href="http://www.juntadeandalucia.es/institutodeestadisticaycartografia">www.juntadeandalucia.es/institutodeestadisticaycartografia</a>
Aragón	<a href="http://www.aragon.es/iaest/ipi">www.aragon.es/iaest/ipi</a>
Principado de Asturias	<a href="http://www.sadei.es">www.sadei.es</a>
Illes Balears	<a href="http://www.ibestat.caib.es">www.ibestat.caib.es</a>
Canarias	<a href="http://www.gobiernodecanarias.org/istac">www.gobiernodecanarias.org/istac</a>
Cantabria	<a href="http://www.icane.es">www.icane.es</a>
Castilla y León	<a href="http://www.jcyl.es/estadistica">www.jcyl.es/estadistica</a>
Castilla - La Mancha	<a href="http://www.jccm.es/estadistica">www.jccm.es/estadistica</a>
Cataluña	<a href="http://www.idescat.cat">www.idescat.cat</a>
Comunitat Valenciana	<a href="http://www.ive.es">www.ive.es</a>
Extremadura	<a href="http://estadistica.juntaex.es">http://estadistica.juntaex.es</a>
Galicia	<a href="http://www.ige.xunta.es">www.ige.xunta.es</a>
Comunidad de Madrid	<a href="http://www.madrid.org/iestadis">www.madrid.org/iestadis</a>
Región de Murcia	<a href="http://econet.carm.es">http://econet.carm.es</a>
La Rioja	<a href="http://www.larioja.org">www.larioja.org</a>