

11 January 2021

**Industrial Production Indices (IPI). Base 2015**  
November 2020. Provisional data

**After adjusting for seasonal and calendar effects, the monthly variation of the Industrial Production Index stood at -0.9%,**

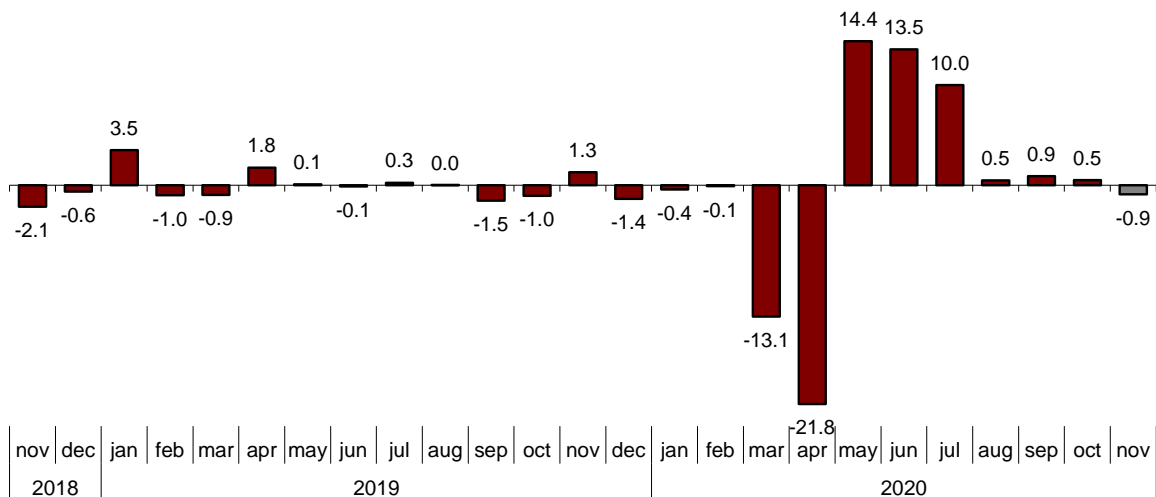
**The annual rate of the Industrial Production Index stands at -3.8% in the series adjusted for seasonal and calendar effects and at -2.0% in the original series**

**Monthly evolution of industrial production**

The monthly variation of the Industrial Production Index (IPI) between the months of November and October, after adjusting for seasonal and calendar effects, was -0.9%. This rate is 1.4 points lower than that observed in October.

**General Industrial Production Index**

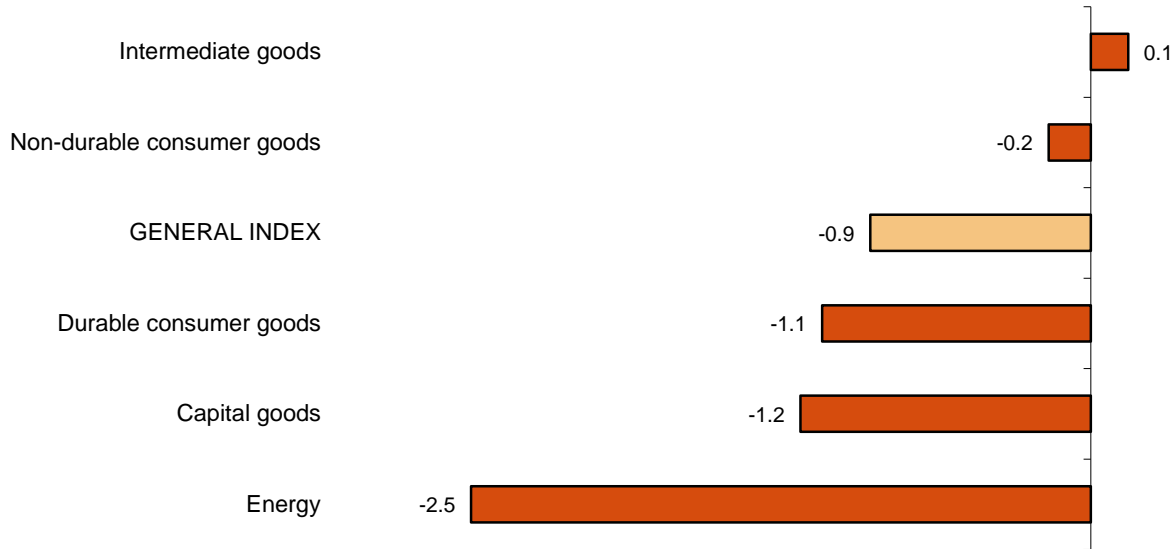
Adjusted for seasonal and calendar effects. Monthly rate (percentage)



Four of the five sectors showed negative monthly rates. It is worth highlighting the decrease in *Energy* (-2.5%) followed by *Capital goods* (-1.2%). The only sector that increased was *Intermediate goods* (0.1%).

**Industrial Production Indices: General and by economic destination**

Adjusted for seasonal and calendar effects November 2020. Monthly rate (percentage)



A more detailed analysis shows the branches of activity with the greatest and lowest monthly rates in November.

Activity (Division from CNAE 2009)	Monthly rate (%)
Other mining and quarrying	8.9
Manufacture of coke and refined petroleum products	8.6
Manufacture of pharmaceutical products	5.6

**Branches of activity with the highest monthly rates of the industrial production index adjusted for seasonal and calendar effects**

**Branches of activity with the lowest monthly rates of the industrial production index adjusted for seasonal and calendar effects**

Activity (Division from CNAE 2009)	Monthly rate (%)
Tobacco industry	-11.0
Manufacture of garments	-10.3
Manufacture of motor vehicles, trailers and semi-trailers	-7.3

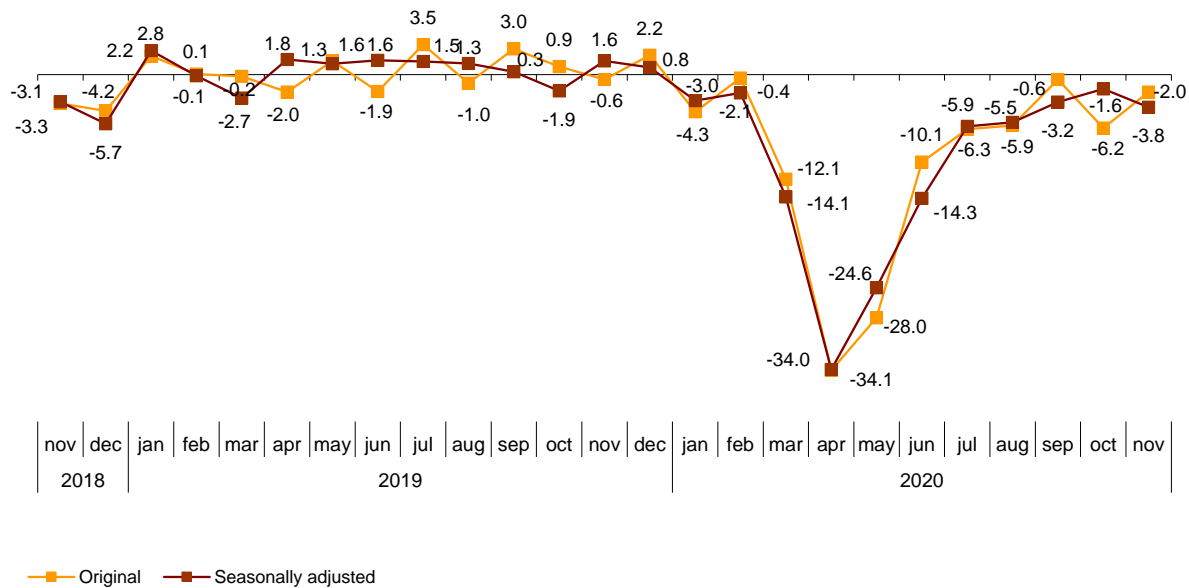
## Annual evolution of industrial production

The Industrial Production Index, adjusted for seasonal and calendar effects, recorded a variation rate of -3.8% in November, as compared to the same month of the previous year. This rate is 2.2 points lower than that observed in October.

The original IPI series experienced an annual variation of -2.0%. This rate is 4.2 points higher than that of October.

### General Industrial Production Index

Annual rate (percentage)



Four of the five sectors showed negative annual rates. It is worth highlighting the decrease in *Energy* (-7.8%) followed by *Capital goods* (-7.1%). The only sector that increased was *Intermediate goods* (1.2%).

### Annual rates of industrial production indices: General and by economic destination of the goods

	Original index Annual rate (%)	Seasonally adjusted index Annual rate (%)
General Index	-2.0	-3.8
Consumer goods	-1.6	-3.6
- Durable consumer goods	1.2	-1.0
- Non-durable consumer goods	-1.9	-3.6
Capital goods	-5.1	-7.1
Intermediate goods	3.8	1.2
Energy	-7.5	-7.8

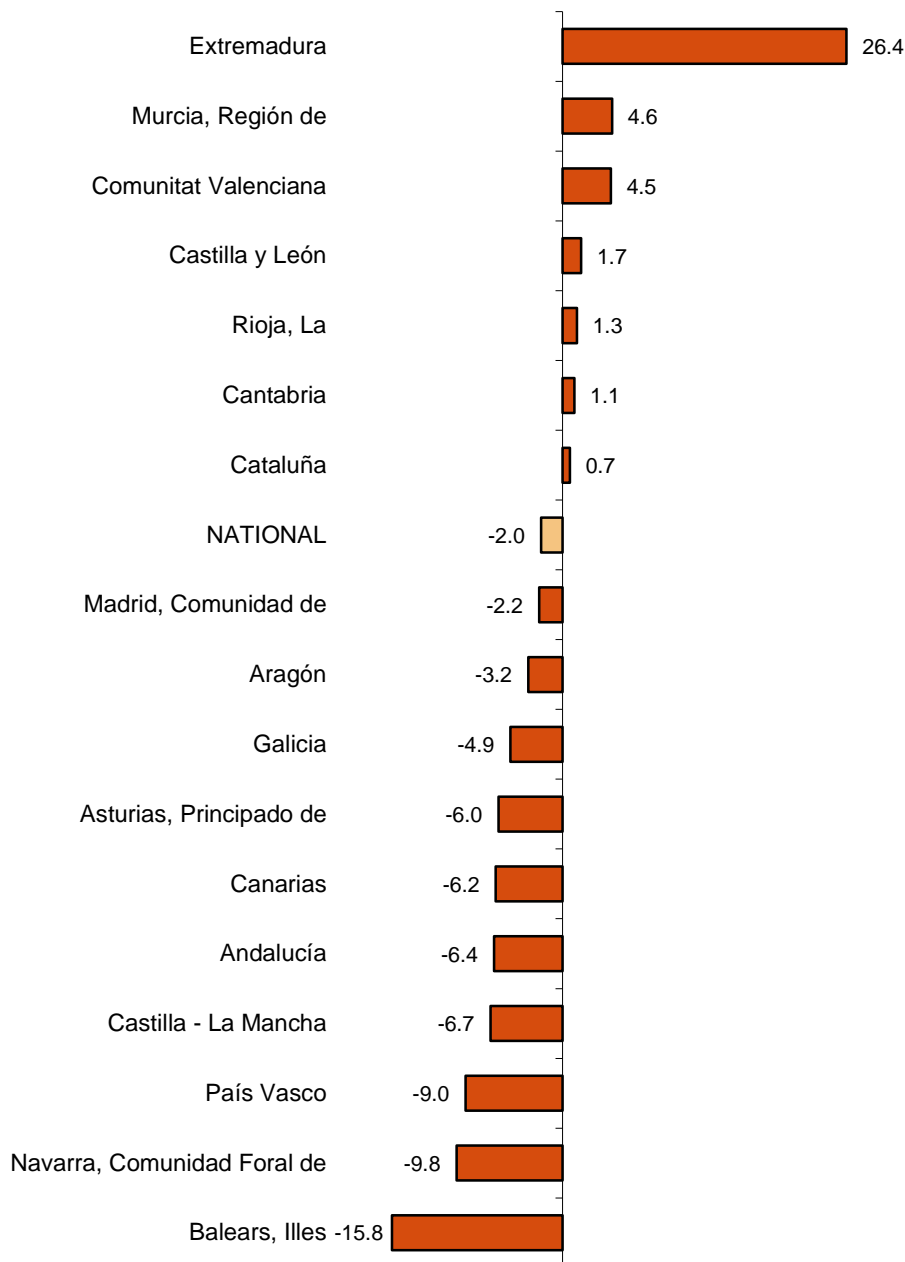
**Results by Autonomous Communities. Annual variation rates of industrial production. Original series**

The annual rate of industrial production increased as compared to November 2019 in seven Autonomous Communities and decreased in the other ten.

The largest increases were recorded in Extremadura (26.4%), Región de Murcia (4.6%) and Comunitat Valenciana (4.5%). The largest decreases were recorded in Illes Balears (-15.8%), Comunidad Foral de Navarra (-9.8%) and País Vasco (-9.0%).

**General indices: national and by Autonomous Communities**

November 2020. Annual rate (percentage)



## Data Review and Update

Coinciding with today's publication, the INE has updated the data of the IPI series corresponding to the last two months. In the case of the series adjusted for calendar effects and for seasonal and calendar effects, the series is revised from the beginning, following the INE standard. The results are available at INEBase.

## Methodological note

The Industrial Production Index (IPI) is a short-term indicator that measures the monthly evolution of the productive activity of the industrial branches, excluding construction, contained in the National Classification of Economic Activities 2009 (CNAE-2009). It therefore investigates the activities included in sections B, C, D and division 36: Water collection, treatment and supply, from section E of the CNAE-2009.

The IPI measures the joint evolution of quantity and quality, eliminating the influence of prices.

**Type of survey:** monthly continuous survey.

**Base year:** 2015.

**Population scope:** industrial establishments whose main activity is included in sections B, C, D and division 36 of the CNAE-2009.

**Geographical scope:** the entire national territory.

**Sample size:** 11,500 industrial establishments and more than 1,100 products.

**Collection method:** completion of the questionnaire by the respondent using one of the following methods: internet (IRIA system), e-mail, fax, telephone or by postal mail.

For more information the methodology can be accessed at:

[https://www.ine.es/en/daco/daco43/metoipi15\\_en.pdf](https://www.ine.es/en/daco/daco43/metoipi15_en.pdf)

And the standardised methodological report at:

<https://www.ine.es/dynt3/metadatos/en/RespuestaDatos.html?oe=30050>

INE statistics are produced in accordance with the Code of Good Practice for European Statistics, which is the basis for the institution's quality policy and strategy. For more information see the section on [Quality at INE and the Code of Best Practices](#) on the INE webpage.

---

For further information see **INEbase:** [www.ine.es/en/](http://www.ine.es/en/) Twitter: [@es\\_ine](https://twitter.com/es_ine)

All press releases at: [www.ine.es/prensa/prensa\\_en.htm](http://www.ine.es/prensa/prensa_en.htm)

**Press Office:** Telephone numbers: (+34) 91 583 93 63 /94 08 – [gprensa@ine.es](mailto:gprensa@ine.es)

**Information Area:** Telephone number: (+34) 91 583 91 00 – [www.ine.es/infoine/?L=1](http://www.ine.es/infoine/?L=1)

---

## Industrial Production Indices. Base 2015

**November 2020**

Provisional Data

### 1. Industrial Production Indices: General and by economic destination adjusted for seasonal and calendar effects

	Index	Rate (%)		
		Monthly	Annual	Year-to-date average
General Index	101.9	-0.9	-3.8	-10.2
Consumer goods	99.5	-0.8	-3.6	-7.7
- Durable consumer goods	102.4	-1.1	-1.0	-14.6
- Non-durable consumer goods	98.4	-0.2	-3.6	-6.7
Capital goods	106.9	-1.2	-7.1	-16.6
Intermediate goods	108.4	0.1	1.2	-8.9
Energy	91.5	-2.5	-7.8	-7.6

### 2. Industrial Production Indices: General and by economic destination adjusted for seasonal and calendar effects

	Index	Rate (%)	
		Annual	Year-to-date average
General Index	106.3	-3.6	-10.3
Consumer goods	103.4	-3.8	-7.7
- Durable consumer goods	111.4	-1.2	-15.1
- Non-durable consumer goods	102.7	-3.8	-7.1
Capital goods	115.5	-7.0	-17.1
Intermediate goods	113.5	1.9	-9.1
Energy	90.2	-7.9	-7.5

### 3. Industrial Production Indices: General and by economic destination. Original series

	Index	Rate (%)		Repercussion Annual
		Annual	Year-to-date average	
General Index	106.2	-2.0	-10.1	
Consumer goods	103.3	-1.6	-7.6	-0.412
- Durable consumer goods	111.1	1.2	-14.8	0.024
- Non-durable consumer goods	102.6	-1.9	-7.0	-0.436
Capital goods	115.2	-5.1	-16.7	-1.267
Intermediate goods	113.6	3.8	-8.9	1.146
Energy	90.2	-7.5	-7.1	-1.480

**4. Industrial Production Indices: General and by branches of activity (CNAE 2009).  
Original series**

	Index	Rate (%)		Repercussion
		Annual	Year-to-date average	Annual
General Index	106.2	-2.0	-10.1	
B. Mining and quarrying industries	98.2	-10.4	-7.5	-0.073
Extraction of anthracite, coal and lignite	..	..	..	..
National crude petroleum and natural gas	..	..	..	..
Extraction of metallic ores	..	..	..	..
Other mining and quarrying	116.5	-0.1	-8.7	-0.001
C. Manufacturing industry	110.2	-0.7	-11.0	-0.551
Food Industry	102.7	-2.2	-5.4	-0.256
Manufacture of beverages.	100.0	-8.1	-9.9	-0.268
Tobacco industry.	..	..	..	..
Textile industry	114.0	12.2	-9.9	0.124
Manufacture of garments	97.3	-17.9	-27.2	-0.181
Leather and footwear industry	56.1	-27.3	-27.7	-0.183
Manufacture of wood and of products of wood and cork, except furniture; basketmaking and wickerwork	113.5	0.0	-13.5	0.000
Manufacture of paper and paper-products	103.8	4.0	-3.7	0.090
Graphic arts and reproduction of recorded media	74.8	-4.4	-18.9	-0.052
Manufacture of coke and refined petroleum products	94.0	-3.9	-15.4	-0.085
Chemical Industry	112.2	7.9	-2.4	0.466
Manufacture of pharmaceutical products	128.5	10.4	2.7	0.409
Rubber and plastic material transformation industry	123.1	11.6	-7.9	0.536
Manufacture of other non-metallic ore products	116.3	5.3	-9.7	0.201
Metallurgy; manufacture of iron, steel and ferro-alloy products	104.0	0.3	-14.5	0.008
Manufacture of metal products, except machinery and equipment	111.7	-2.8	-14.4	-0.237
Manufacture of computers, electronic and optical products	115.5	-11.5	-5.2	-0.145
Manufacture of electrical material and equipment	120.6	-0.9	-4.4	-0.029
Manufacture of machinery and equipment n.e.c.	124.9	-12.5	-13.9	-0.757
Manufacture of motor vehicles, trailers and semi-trailers	116.0	9.8	-20.4	0.777
Manufacture of other transport equipment	103.4	-15.3	-18.8	-0.473
Manufacture of furniture.	113.7	-2.2	-18.3	-0.031
Other manufacturing industries	113.4	-7.4	-21.6	-0.093
Repair and installation of machinery and equipment	111.8	-11.3	-13.4	-0.359
D. Supply of electrical energy, gas, steam and air conditioning	89.5	-9.3	-6.5	-1.390
E. Water supply, activities, waste management and decontamination*	92.5	0.0	-3.8	0.000

\* It only includes Water collection, treatment and supply

(..) Data not available due to statistical secrecy.

## 5. Industrial production indices: national and by Autonomous Community. Original series

	Index	Rate (%)	
		Annual	Year-to-date average
National	106.2	-2.0	-10.1
Andalucía	92.3	-6.4	-12.6
Aragón	107.9	-3.2	-9.7
Asturias, Principado de	97.3	-6.0	-14.6
Balears, Illes	68.4	-15.8	-22.1
Canarias	90.8	-6.2	-10.6
Cantabria	114.6	1.1	-10.7
Castilla y León	105.2	1.7	-10.7
Castilla-La Mancha	100.8	-6.7	-9.0
Cataluña	107.9	0.7	-10.3
Comunitat Valenciana	112.0	4.5	-7.1
Extremadura	110.6	26.4	-2.4
Galicia	109.9	-4.9	-9.3
Madrid, Comunidad de	109.9	-2.2	-7.5
Murcia, Región de	116.7	4.6	-2.5
Navarra, Comunidad Foral de	115.2	-9.8	-11.6
País Vasco	104.7	-9.0	-14.7
Rioja, La	96.8	1.3	-13.2

### More detailed information by Autonomous Community may be obtained at:

Andalucía	<a href="http://www.juntadeandalucia.es/institutodeestadisticaycartografia">www.juntadeandalucia.es/institutodeestadisticaycartografia</a>
Aragón	<a href="http://www.aragon.es/iaest/ipi">www.aragon.es/iaest/ipi</a>
Principado de Asturias	<a href="http://www.sadei.es">www.sadei.es</a>
Illes Balears	<a href="http://www.ibestat.caib.es">www.ibestat.caib.es</a>
Canarias	<a href="http://www.gobiernodecanarias.org/istac">www.gobiernodecanarias.org/istac</a>
Cantabria	<a href="http://www.icane.es">www.icane.es</a>
Castilla y León	<a href="http://www.jcyl.es/estadistica">www.jcyl.es/estadistica</a>
Castilla - La Mancha	<a href="http://www.jccm.es/estadistica">www.jccm.es/estadistica</a>
Cataluña	<a href="http://www.ides.cat.cat">www.ides.cat.cat</a>
Comunitat Valenciana	<a href="http://www.ive.es">www.ive.es</a>
Extremadura	<a href="http://estadistica.juntaex.es">http://estadistica.juntaex.es</a>
Galicia	<a href="http://www.ige.xunta.es">www.ige.xunta.es</a>
Comunidad de Madrid	<a href="http://www.madrid.org/iestadis">www.madrid.org/iestadis</a>
Región de Murcia	<a href="http://econet.carm.es">http://econet.carm.es</a>
La Rioja	<a href="http://www.larioja.org">www.larioja.org</a>