

Services Sector Activity Indicators (SSAI). Base 2015
January 2021. Provisional data

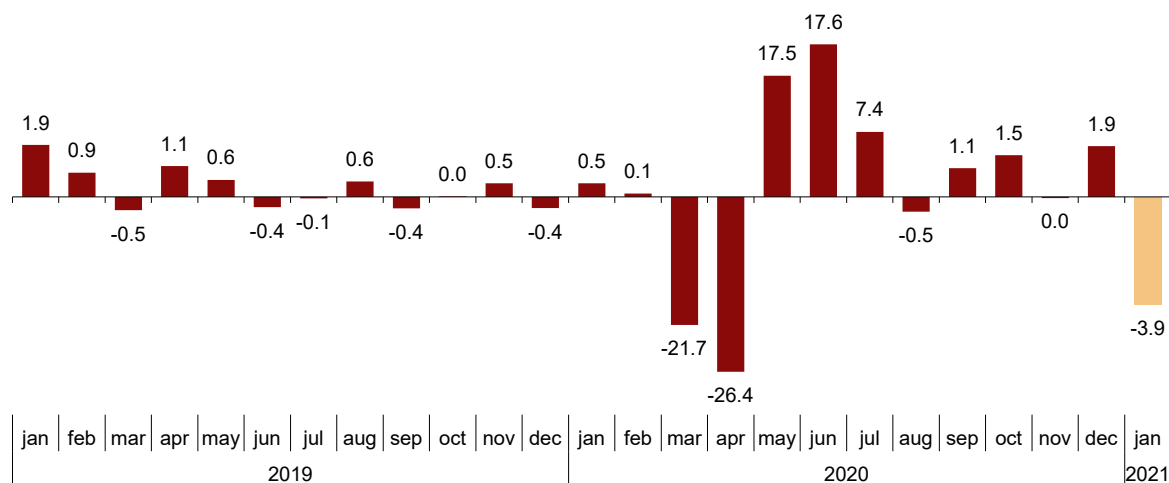
Turnover in the¹ Market Services Sector stands at -3.9% , after adjusting for seasonal and calendar effects

The annual rate stands at -14.6% in the series adjusted for seasonal and calendar effects and at -16.5% in the original series

Monthly trend in turnover for the Market Services Sector

After adjusting for seasonal and calendar effects, the monthly variation of the general index of turnover for the Market Services Sector between January and December was -3.9% . This rate is 5.8 points lower than that observed in December.

General index of the turnover for the Market Services Sector
Seasonally and calendar adjusted. Monthly rate. Percentage



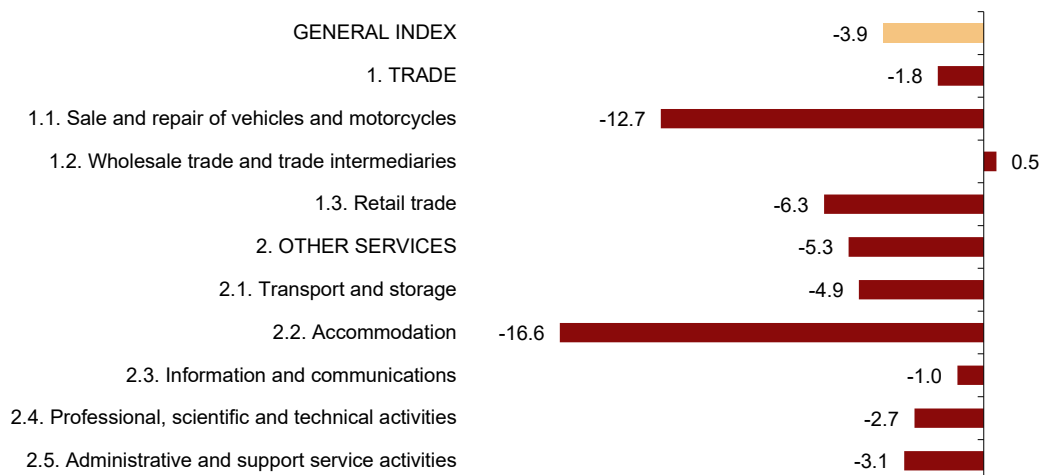
¹ As reflected in the methodology of this value index, the information is presented in current (nominal) terms, without adjusting the effects in the price variation.

After adjusting for seasonal and calendar effects, *Trade* decreased by 1.8% and *Other services* by 5.3%.

By sectors, Wholesale trade and trade intermediaries (0.5%) was the only one that showed an increase. In turn, *Accommodation* (-16.6%) and *Sale and repair of vehicles and motorcycles* (-12.7%) recorded the largest decreases.

General and by sectors turnover Index

Seasonally and calendar adjusted. January 2021. Monthly rate. Percentage



A more detailed analysis shows the branches of activity that registered the highest monthly rates and those with the highest decreases in the month of January.

Types of activities with the highest monthly rates in the Services Sector turnover index

Seasonally and calendar adjusted. January 2021. Monthly rate

Activity (CNAE-2009 groups)	Monthly rate(%)
Publishing activities	7.9
Other professional scientific and technical activities	1.8
Wholesale trade and commission trade	0.5

Types of activities with the lowest monthly rates in the Services Sector turnover index

Seasonally and calendar adjusted. January 2021 .Monthly rate

Activity (CNAE-2009 groups)	Monthly rate(%)
Air transport	-26.8
Accommodation	-22.0
Food and beverage service activities	-15.2

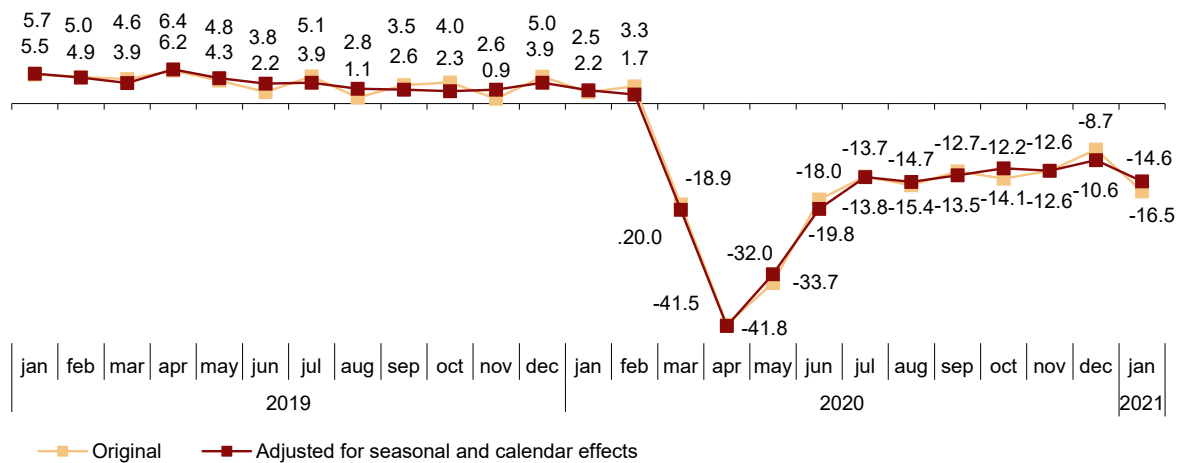
Annual trend in the turnover indices for the Market Services Sector

The general index of the turnover for the Market Services Sector, after adjusting for seasonal and calendar effects, experienced a variation of -14.6% in January compared to the same month of 2019. This rate is four points lower than that recorded in December.

The original series presented an annual variation of -16.5% , which is 7.8 points below that registered in December.

General index of turnover for the Market Services Sector

Annual Rate. Percentage



After adjusting for seasonal and calendar effects, *Trade* decreased by 10.3% as compared with January 2019 and *Other services* by 21.6%.

By sectors, *Professional, scientific and technical activities* (-7.3%), *Information and communications* (-8.4%) and *Retail trade* (-8.9%) registered the lowest declines. In turn, *Accommodation* (-60.5%) and *Administrative and support service activities* (-27.5%) recorded the largest decreases.

Annual rates in Turnover index for the Market Services Sector: General and by sector. January 2021

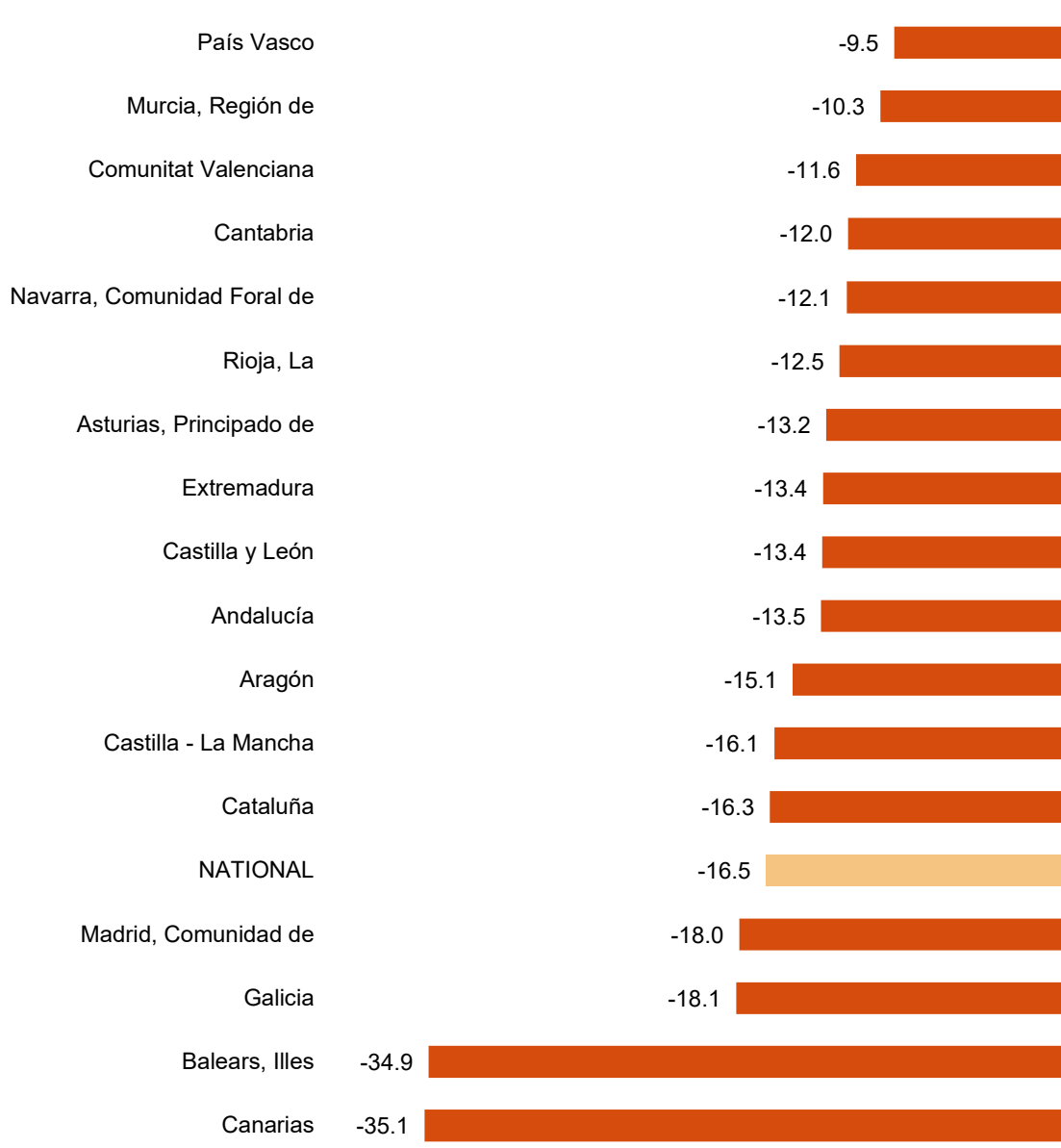
	Original index	Seasonally adjusted index
	Annual rate (%)	Annual rate (%)
GENERAL INDEX	-16.5	-14.6
1. TRADE	-13.3	-10.3
1.1. Sale and repair of vehicles and motorcycles	-23.9	-20.6
1.2. Wholesale trade	-12.9	-9.6
1.3. Retail trade	-10.5	-8.9
2. OTHER SERVICES	-22.7	-21.6
2.1. Transport and storage	-19.1	-16.9
2.2. Accommodation	-60.1	-60.5
2.3. Information and communications	-10.4	-8.4
2.4. Professional, scientific and technical activities	-10.2	-7.3
2.5. Administrative and support service activities	-28.6	-27.5

Results by Autonomous Community. Annual variation rates of turnover. Original series

In all Autonomous Communities, Market Services Sector turnover decreased compared to January 2020.

Canarias (-35.1%), Illes Balears (-34.9%) and Galicia (-18.1%) recorded the largest decreases.

General Indices: National and by Autonomous Community January 2021. Turnover Annual Rate. Percentage



Employment trend

Employment in the Market Services Sector experienced a variation of -4.6% in January as compared to the same month of the previous year. This rate is three tenths higher than that registered in December.

The employment rate decreased by 2.6% in *Trade* and by 5.9% in *Other services*.

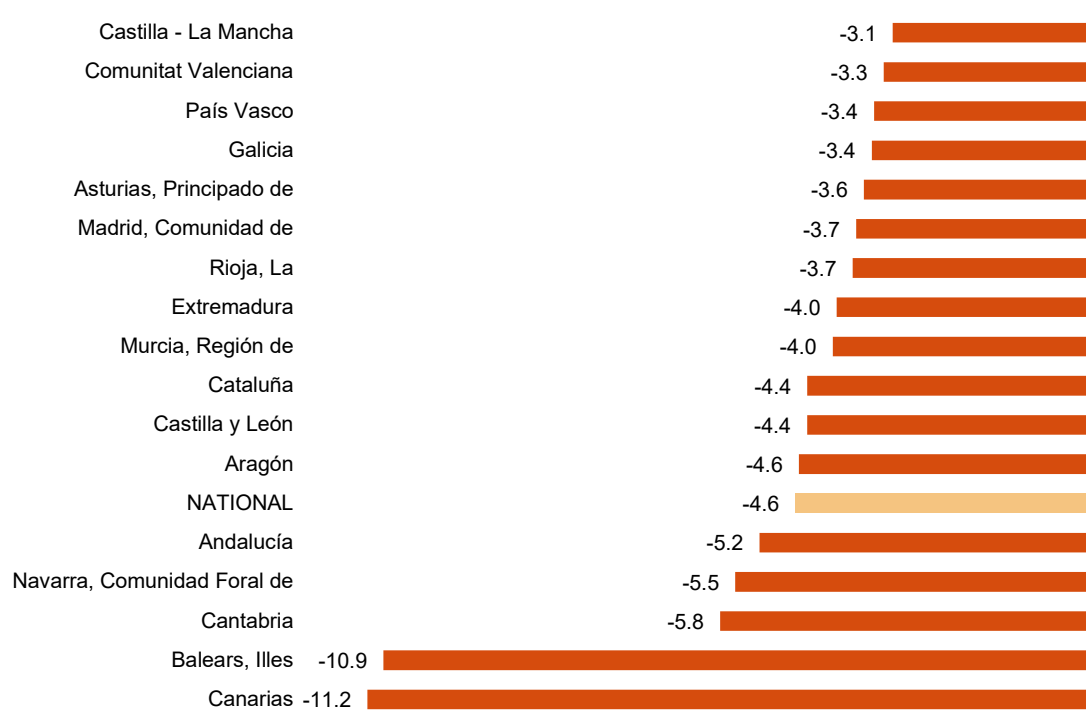
National Indices of employed personnel by sector. January 2021

	Index	Rate (%)	
		Monthly	Annual
GENERAL INDEX	102.4	-1.2	-4.6
1. TRADE	104.3	-1.2	-2.6
1.1. Sale and repair of vehicles and motorcycles	102.8	-0.5	-4.2
1.2. Wholesale trade	109.9	-0.6	-1.1
1.3. Retail trade	101.0	-1.8	-3.3
2. OTHER SERVICES	101.0	-1.2	-5.9
2.1. Transport and storage	105.9	-0.4	-2.7
2.2. Accommodation	83.5	-2.1	-16.7
2.3. Information and communications	110.0	-0.3	-0.9
2.4. Professional, scientific and technical activities	106.2	-0.4	-1.6
2.5. Administrative and support service activities	109.6	-1.9	-2.7

Results by Autonomous Community. Annual employment variation rates

All the autonomous communities presented negative annual employment rates compared to January 2020. Canarias ($-11,2\%$) and Illes Balears ($-10,9\%$) decreased the most.

General Indices: National and by Autonomous Community January 2021. Annual rate of employed personnel. Percentage



Review and update of data

On the press release day, INE has updated SSAI data series corresponding to the last five months. In the case of calendar adjusted and seasonally and calendar adjusted series, according to INE standard, series are revised since its beginning. Results are available on INEBase.

Methodological note

The Services Sector Activity Indicators (SSAI) measure the short-term evolution of the activity of companies belonging to the Non-Financial Market Services sector through two variables: turnover and employed personnel. Turnover comprises the amounts invoiced by the company for provision of services and sale of goods. Employed personnel include both paid and unpaid personnel.

In order to obtain this data, an ongoing survey is conducted, every month researching more than 28,000 companies that operate in this sector. Results are presented as indices so as to measure variations as compared to the base year 2015.

The characteristics of this statistics are:

Type of survey: monthly continuous survey.

Base year: 2015.

Population scope: companies whose main economic activity is described in sections G, (Trade), H (Transport and Storage), I (Accommodation), J (Information and Communications), M (Professional, Scientific and Technical Activities) and N (Administrative and Support Services Activities) of the National Classification of Economic Activities (CNAE-09).

Geographical scope: all the national territory except for Ceuta and Melilla, for which it is only collected in division 47 of CNAE-09 (retail trade).

Sample size: 28,000 companies.

Type of sampling: stratified random sampling.

Collection method: completion of the questionnaire by the respondent using one of the following methods: internet (IRIA system), e-mail, fax, telephone or by postal mail.

For more information you can access the methodology at:

<https://www.ine.es/metodologia/t37/notaiass15.pdf>

And the standardised methodological report at:

<https://www.ine.es/dynt3/metadatos/es/RespuestaDatos.html?oe=30183>

INE statistics are produced in accordance with the Code of Good Practice for European Statistics, which is the basis for the institution's quality policy and strategy. For more information see the section on [Quality at INE and the Code of Best Practices](#) on the INE website.

For further information see INEbase: www.ine.es/en/ Twitter: [@es_ine](https://twitter.com/es_ine)

All press releases at: www.ine.es/en/prensa/prensa_en.htm

Press office: Telephone numbers: (+34) 91 583 93 63 /94 08 – gprensa@ine.es

Information Area: Telephone number: (+34) 91 583 91 00 – www.ine.es/infoine/?L=1

Services Sector Activity Indicators. Base 2015

January 2021

Provisional data

1. Turnover indices: General and by sector Seasonally and calendar adjusted

	Index	Rate (%)		
		Monthly	Annual	Year-to-date average
GENERAL INDEX	105.4	-3.9	-14.6	-14.6
1. TRADE	111.5	-1.8	-10.3	-10.3
1.1. Sale and repair of vehicles and motorcycles	105.8	-12.7	-20.6	-20.6
1.2. Wholesale trade	115.6	0.5	-9.6	-9.6
1.3. Retail trade	101.9	-6.3	-8.9	-8.9
2. OTHER SERVICES	97.7	-5.3	-21.6	-21.6
2.1. Transport and storage	102.9	-4.9	-16.9	-16.9
2.2. Accommodation	48.1	-16.6	-60.5	-60.5
2.3. Information and communications	106.7	-1.0	-8.4	-8.4
2.4. Professional, scientific and technical activities	128.0	-2.7	-7.3	-7.3
2.5. Administrative and support service activities	93.8	-3.1	-27.5	-27.5

2. Turnover indices: General and by sector Calendar adjusted

	Index	Rate (%)	
		Annual	Year-to-date average
GENERAL INDEX	98.6	-14.3	-14.3
1. TRADE	104.9	-10.5	-10.5
1.1. Sale and repair of vehicles and motorcycles	93.3	-20.9	-20.9
1.2. Wholesale trade	108.2	-9.4	-9.4
1.3. Retail trade	101.8	-9.1	-9.1
2. OTHER SERVICES	87.4	-21.5	-21.5
2.1. Transport and storage	95.9	-16.9	-16.9
2.2. Accommodation	37.8	-60.5	-60.5
2.3. Information and communications	100.6	-8.6	-8.6
2.4. Professional, scientific and technical activities	110.4	-8.4	-8.4
2.5. Administrative and support service activities	80.2	-27.5	-27.5

3. Turnover indices: General and by branch of activity
Original series

	Index	Rate (%)	
		Annual	Year-to-date average
GENERAL INDEX	96.6	-16.5	-16.5
1. TRADE	102.2	-13.3	-13.3
1.1. SALE AND REPAIR OF VEHICLES	90.6	-23.9	-23.9
- Sale of motor vehicles	89.9	-24.8	-24.8
- Maintenance and repair of motor vehicles	95.2	-17.6	-17.6
1.2. WHOLESALE TRADE AND COMMISSION TRADE	104.7	-12.9	-12.9
- Wholesale on a fee or contract basis	119.5	-15.0	-15.0
- Wholesale of agricultural raw materials and live animals	113.9	0.0	0.0
- Wholesale of food, beverages and tobacco	96.3	-12.9	-12.9
- Wholesale of household goods	107.2	-10.8	-10.8
- Wholesale of information and communication equipment	107.0	-3.1	-3.1
- Wholesale of other machinery, equipment and supplies	118.6	-9.8	-9.8
- Other specialised w holesale trade	103.8	-19.1	-19.1
- Non-specialised w holesale trade	122.3	-11.9	-11.9
1.3. RETAIL TRADE	100.6	-10.5	-10.5
2. OTHER SERVICES	86.3	-22.7	-22.7
2.1. TRANSPORTATION AND STORAGE SERVICES	93.8	-19.1	-19.1
Land transport	91.7	-18.7	-18.7
- Rail transport	55.0	-46.1	-46.1
- Taxi operation	41.6	-57.3	-57.3
- Other passenger land transport	60.0	-42.2	-42.2
- Freight transport by road and removal services	107.3	-8.4	-8.4
Water transport	79.8	-27.2	-27.2
Air transport	33.6	-70.5	-70.5
Warehousing and support activities for transportation	106.7	-10.0	-10.0
Post and courier activities	128.5	0.3	0.3
2.2. ACCOMMODATION AND FOOD SERVICES ACTIVITIES	38.2	-60.1	-60.1
Accommodation	14.3	-80.7	-80.7
Food and beverage service activities	49.7	-53.3	-53.3
2.3. INFORMATION AND COMMUNICATION	99.0	-10.4	-10.4
Publishing activities	98.3	3.3	3.3
Motion picture, television programme production and music publishing activities	64.6	-38.0	-38.0
Programming and broadcasting activities	97.6	-11.5	-11.5
Telecommunications	101.7	-4.7	-4.7
Computer programming, consultancy and related activities	101.7	-14.8	-14.8
Information service activities	120.7	0.3	0.3
2.4. PROFESSIONAL, SCIENTIFIC AND TECHNICAL ACTIVITIES	108.5	-10.2	-10.2
Legal, accounting and management consulting activities	119.6	-9.0	-9.0
Architectural and engineering activities; technical testing and analysis	101.5	-10.8	-10.8
Advertising and market research	97.9	-13.1	-13.1
Other professional scientific and technical activities	121.3	-5.8	-5.8
2.5. ADMINISTRATIVE AND SUPPORT SERVICE ACTIVITIES	79.2	-28.6	-28.6
Employment activities	125.6	-7.3	-7.3
Travel agencies and tour operator services	11.1	-85.3	-85.3
Security and investigation activities	129.8	-3.0	-3.0
Cleaning activities	117.3	-3.0	-3.0
Office administrative and other business support activities	118.0	-19.4	-19.4

4. Employed personnel indices: General and by branch of activity

	Index	Rate (%)		
		Monthly	Annual	Year-to-date average
GENERAL INDEX	102.4	-1.2	-4.6	-4.6
1. TRADE	104.3	-1.2	-2.6	-2.6
1.1. SALE AND REPAIR OF VEHICLES	102.8	-0.5	-4.2	-4.2
- Sale of motor vehicles	109.5	-0.4	-3.8	-3.8
- Maintenance and repair of motor vehicles	96.0	-0.5	-4.6	-4.6
1.2. WHOLESALE TRADE AND COMMISSION TRADE	109.9	-0.6	-1.1	-1.1
- Wholesale on a fee or contract basis	105.4	0.3	-0.9	-0.9
- Wholesale of agricultural raw materials and live animals	108.0	-1.3	2.1	2.1
- Wholesale of food, beverages and tobacco	115.0	-2.2	-1.3	-1.3
- Wholesale of household goods	104.7	0.4	-1.5	-1.5
- Wholesale of information and communication equipment	109.3	0.0	0.3	0.3
- Wholesale of other machinery, equipment and supplies	111.7	-0.2	-1.6	-1.6
- Other specialised w holesale trade	108.3	0.6	-0.8	-0.8
- Non-specialised w holesale trade	110.5	1.2	-2.1	-2.1
1.3. RETAIL TRADE	101.0	-1.8	-3.3	-3.3
2. OTHER SERVICES	101.0	-1.2	-5.9	-5.9
2.1. TRANSPORTATION AND STORAGE SERVICES	105.9	-0.4	-2.7	-2.7
Land transport	104.2	-0.2	-3.0	-3.0
- Rail transport	106.2	-2.1	-2.5	-2.5
- Taxi operation	91.6	-0.2	-8.8	-8.8
- Other passenger land transport	101.3	-1.3	-7.2	-7.2
- Freight transport by road and removal services	107.9	0.3	-0.4	-0.4
Water transport	99.9	-1.7	-8.7	-8.7
Air transport	104.9	-1.7	-7.0	-7.0
Warehousing and support activities for transportation	110.7	0.0	-1.8	-1.8
Post and courier activities	104.2	-2.1	-1.7	-1.7
2.2. ACCOMMODATION AND FOOD SERVICES ACTIVITIES	83.5	-2.1	-16.7	-16.7
Accommodation	69.0	-3.0	-22.0	-22.0
Food and beverage service activities	87.2	-1.9	-15.5	-15.5
2.3. INFORMATION AND COMMUNICATION	110.0	-0.3	-0.9	-0.9
Publishing activities	95.5	-0.3	-5.0	-5.0
Motion picture, television programme production and music publishing activities	98.0	-5.1	-10.1	-10.1
Programming and broadcasting activities	100.2	1.2	-1.5	-1.5
Telecommunications	90.0	-0.5	0.3	0.3
Computer programming, consultancy and related activities	121.6	0.0	0.6	0.6
Information service activities	106.7	0.8	1.4	1.4
2.4. PROFESSIONAL, SCIENTIFIC AND TECHNICAL ACTIVITIES	106.2	-0.4	-1.6	-1.6
Legal, accounting and management consulting activities	104.2	0.1	-1.4	-1.4
Architectural and engineering activities; technical testing and analysis	114.1	-0.6	0.6	0.6
Advertising and market research	97.8	-2.0	-7.5	-7.5
Other professional scientific and technical activities	104.8	0.1	-1.9	-1.9
2.5. ADMINISTRATIVE AND SUPPORT SERVICE ACTIVITIES	109.6	-1.9	-2.7	-2.7
Employment activities	114.9	-5.1	-5.9	-5.9
Travel agencies and tour operator services	90.2	-1.1	-12.9	-12.9
Security and investigation activities	115.4	-1.5	-1.6	-1.6
Cleaning activities	105.8	-1.4	0.1	0.1
Office administrative and other business support activities	112.9	-0.6	-3.1	-3.1

5. Turnover indices: National and by Autonomous Community

	Index	Rate (%)	
		Annual	Year-to-date average
NATIONAL	96.6	-16.5	-16.5
Andalucía	98.2	-13.5	-13.5
Aragón	94.7	-15.1	-15.1
Asturias, Principado de	97.3	-13.2	-13.2
Balears, Illes	55.9	-34.9	-34.9
Canarias	75.4	-35.1	-35.1
Cantabria	107.6	-12.0	-12.0
Castilla y León	92.8	-13.4	-13.4
Castilla-La Mancha	99.3	-16.1	-16.1
Cataluña	93.0	-16.3	-16.3
Comunitat Valenciana	103.0	-11.6	-11.6
Extremadura	96.0	-13.4	-13.4
Galicia	99.3	-18.1	-18.1
Madrid, Comunidad de	100.5	-18.0	-18.0
Murcia, Región de	107.5	-10.3	-10.3
Navarra, Comunidad Foral de	103.2	-12.1	-12.1
País Vasco	103.8	-9.5	-9.5
Rioja, La	104.6	-12.5	-12.5

6. Employed personnel indices: National and by Autonomous Community

	Index	Rate (%)		
		Monthly	Annual	Year-to-date average
NATIONAL	102.4	-1.2	-4.6	-4.6
Andalucía	100.0	-1.2	-5.2	-5.2
Aragón	104.2	-1.7	-4.6	-4.6
Asturias, Principado de	100.2	-1.1	-3.6	-3.6
Balears, Illes	82.1	-2.3	-10.9	-10.9
Canarias	96.9	-1.3	-11.2	-11.2
Cantabria	100.5	-1.8	-5.8	-5.8
Castilla y León	99.6	-1.1	-4.4	-4.4
Castilla-La Mancha	103.5	-1.6	-3.1	-3.1
Cataluña	103.6	-0.9	-4.4	-4.4
Comunitat Valenciana	106.4	-2.0	-3.3	-3.3
Extremadura	100.5	-1.7	-4.0	-4.0
Galicia	103.1	-1.6	-3.4	-3.4
Madrid, Comunidad de	104.7	-0.7	-3.7	-3.7
Murcia, Región de	106.9	-1.4	-4.0	-4.0
Navarra, Comunidad Foral de	102.9	-1.4	-5.5	-5.5
País Vasco	102.0	-1.2	-3.4	-3.4
Rioja, La	104.2	-1.5	-3.7	-3.7