

24 March 2022

Industrial Turnover Indices (ITI). Base 2015

January 2022. Provisional data

The monthly variation of the Total Industrial Turnover Index¹ stands at 3.3%, after seasonal and calendar adjustment

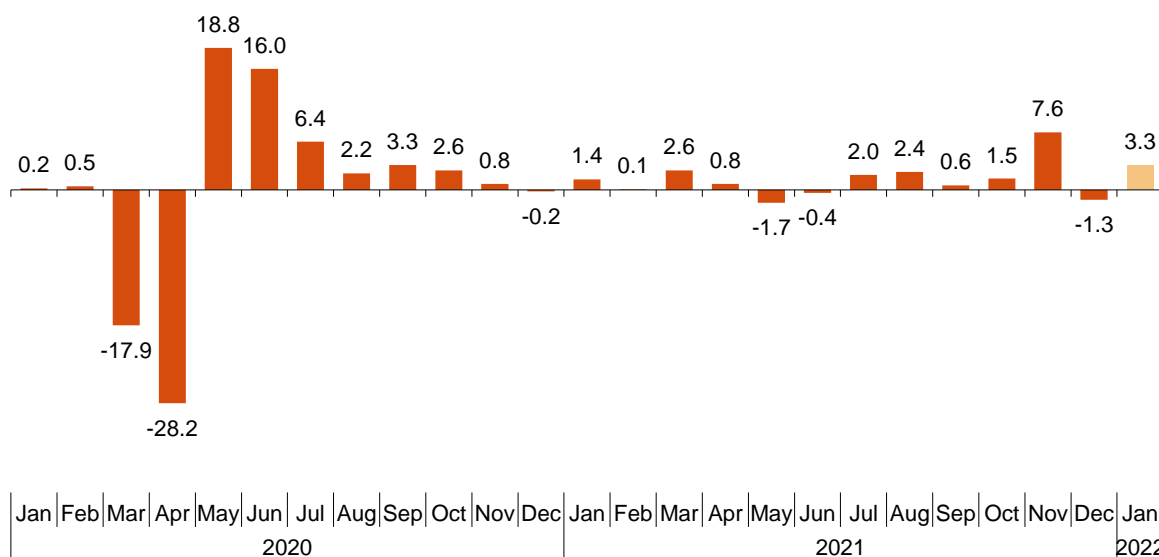
The annual rate stands at 18.5% in the seasonal and calendar adjusted series and at 22.3% in the original series

Monthly trend of the Industrial Turnover

The monthly variation of the seasonally and calendar adjusted Total Industrial Turnover Index between the months of January and December, stood at 3.3%. This rate was 4.6 points higher than the previous month.

Industrial Turnover Index, Total. Seasonally and calendar adjusted

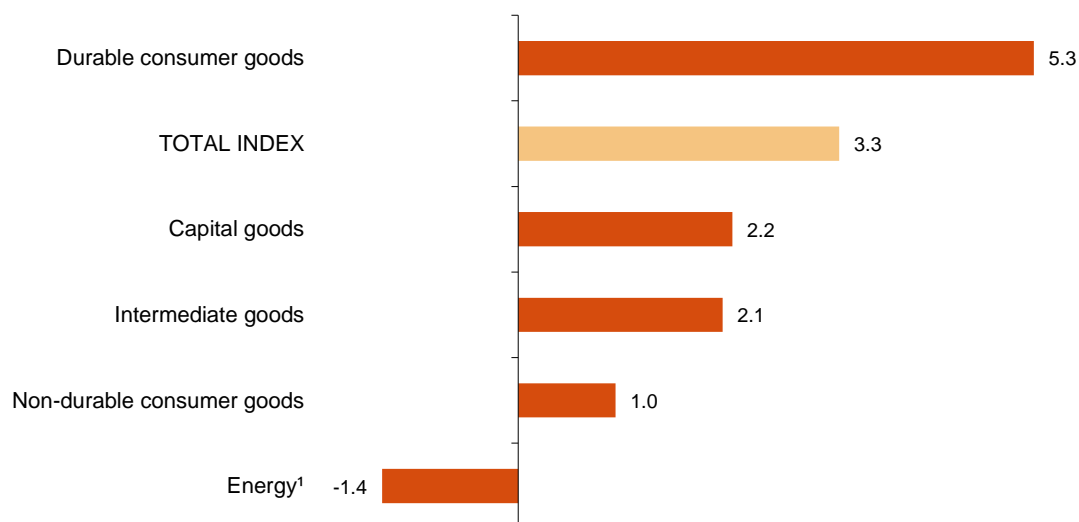
Monthly rate. Percentage



¹ As indicated in the methodology of this value index, the information is presented in current terms (nominal terms), this is, without adjusting the price variation effects.

By Main Industrial Groupings (MIGs), four of the five sectors showed positive monthly rates. It is worth highlighting the increase in *Durable consumer goods* (5.3%), followed by *Capital goods* (2.2%). The only sector that decreased was *Energy*² (-1.4%).

Industrial Turnover Indices, Total and by MIGs. Seasonally and calendar adjusted. January 2022. Monthly rate. Percentage



¹ Except electricity, gas, steam, air conditioning and water supply.

A more detailed analysis showed the branches of activity with the highest and the lowest monthly rates in the month of January.

Branches of activity with the highest monthly rates of the Industrial Turnover Index. Seasonally and calendar adjusted

Branch of activity (Division of the CNAE 2009)	Monthly rate (%)
Manufacture of pharmaceutical products	13.5
Manufacture of other transport material	11.3
Metallurgy; manufacture of iron, steel and ferro-alloy products	7.8

Branches of activity with the lowest monthly rates of the Industrial Turnover Index. Seasonally and calendar adjusted

Branch of activity (Division of the CNAE 2009)	Monthly rate (%)
Manufacture of beverages	-7.2
Repair and installation of machinery and equipment	-5.8
Other mining and quarrying	-5.3

² Except electricity, gas, steam, air conditioning and water supply.

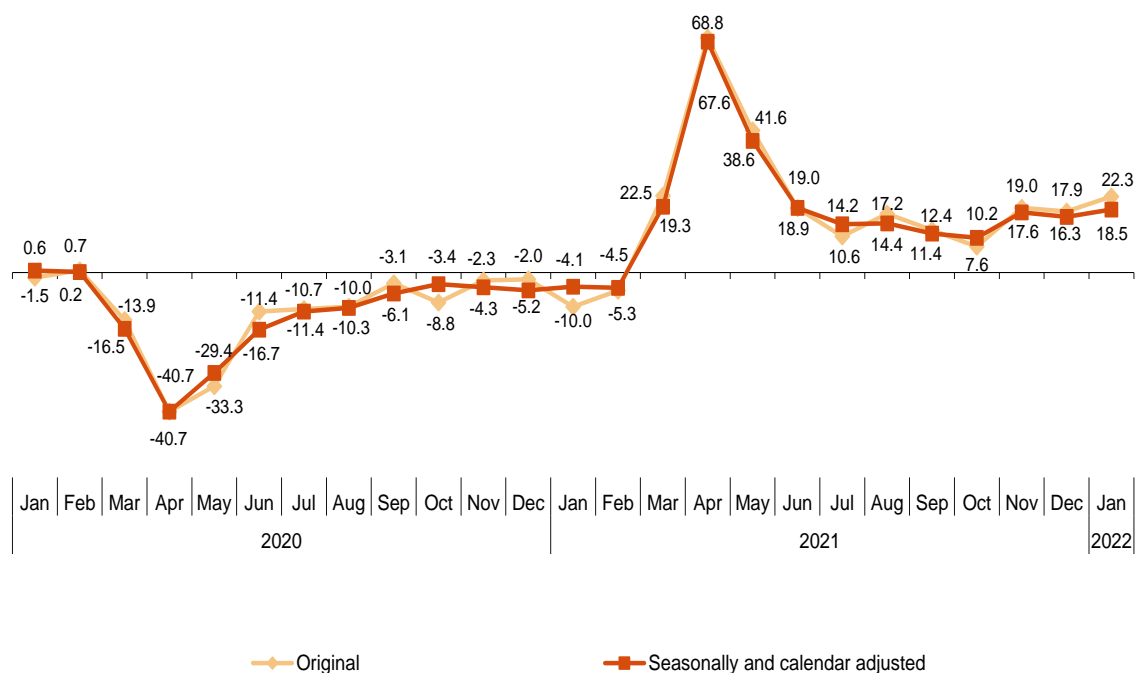
Annual trend of the Industrial Turnover Indices

The Total Industrial Turnover Index, once adjusted for seasonal and calendar effects, showed a variation of 18.5% in January, as compared with the same month of the previous year. This rate was 2.2 points higher than the one registered in December.

The ITI original series registered an annual variation of 22.3%. This rate was 4.4 points higher than the one in December.

Industrial Turnover Index, Total. Seasonally and calendar adjusted

Annual rates. Percentage



By MIGs, the seasonally and calendar adjusted indices registered positive annual rates in four of five of the analysed sectors, highlighting the increase in *Energy*² (79.6%).

Industrial Turnover Index, Total and by MIGs. Annual rates

	Unadjusted index	Seasonally and calendar adjusted index
	Annual rate (%)	Annual rate (%)
TOTAL INDEX	22.3	18.5
1. Consumer goods	14.9	10.8
1.1. Durable consumer goods	17.4	12.7
1.2. Non-durable consumer goods	14.7	11.0
2. Capital goods	2.6	-1.1
3. Intermediate goods	31.2	26.4
4. Energy ¹	81.3	79.6

¹ Except electricity, gas, steam, air conditioning and water supply.

Annual trend of the Industrial Turnover Indices by market. Original series

In January all markets showed positive annual rates. It is worth noting the increase registered in the domestic market (24.5%).

Industrial Turnover Index, Total and by market

January 2022. Annual rate. Percentage

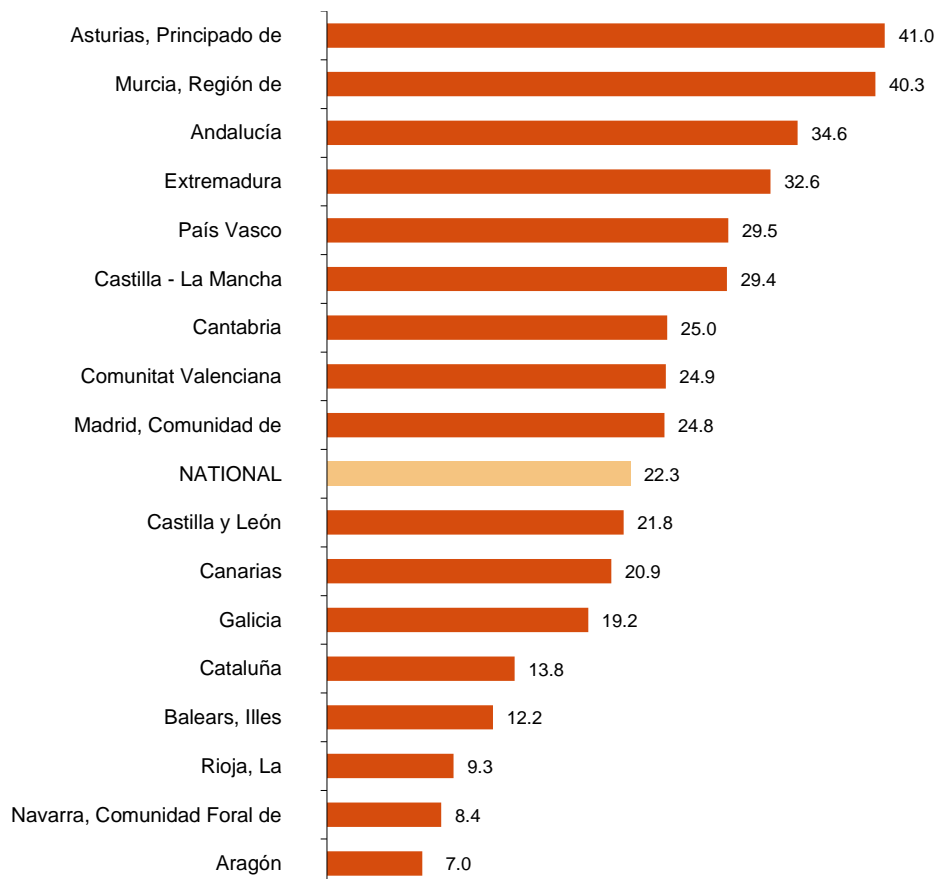


Results by Autonomous Community. Annual rates of the Industrial Turnover. Original series

Turnover increased as compared to January 2021 in all the autonomous communities. The largest increases were recorded in Principado de Asturias (41.0%), Región de Murcia (40.3%) and Andalucía (34.6%). The lowest were recorded in Aragón (7.0%), Comunidad Foral de Navarra (8.4%) and La Rioja (9.3%).

Industrial Turnover Index, Total and by Autonomous Community

January 2022. Annual rate. Percentage



Revisions and data update

On the press release day, INE has updated ITI data series corresponding to the last 13 months. In the case of calendar adjusted and seasonally and calendar adjusted series, according to INE standard, series are revised since its beginning. Results are available at INEBase.

Methodological note

Industrial Turnover Indices (ITI) are short-term indicators aiming at measuring the monthly evolution of the industrial sector, excluding the construction.

The required information is collected since January 2002, together with the Industrial New Orders Received Indices (INORI) through a survey addressed to more than 12.000 industrial establishments throughout the country.

Survey Type: ongoing monthly.

Base year: 2015.

Population scope: units of economic activity whose main activity is included in Sections B: Extractive industries (with the exception, due to their not being relevant to Spanish industry, of division 09) or C: Manufacturing industry of CNAE-2009.

Geographical scope: the whole country, excluding Ceuta and Melilla.

Sample size: Approx. 12,000 establishments.

Data collection: monthly, value of total business turnover broken down by market.

Collection method: fill in a questionnaire by the respondent using one of the following methods: internet (IRIA system), email, fax, telephone or post.

Further information is available in the methodology:

http://www.ine.es/dyngs/INEbase/en/operacion.htm?c=Estadistica_C&cid=1254736148782&menu=metodologia&idp=1254735576715

And in the standardised methodological report:

<http://www.ine.es/dynt3/metadatos/en/RespuestaDatos.html?oe=30052>

INE's statistics are produced according to the European Statistics Code of Practice, that underlies the policy and strategy of the institution quality. For further information, take a look at the section [Quality at INE and Code of Practice](#) at INE Website.

For further information see **INEbase:** www.ine.es/en/ Twitter: [@es_ine](#)

All press releases at: www.ine.es/en/prensa/prensa_en.htm

Press office: Telephone numbers: (+34) 91 583 93 63 /94 08 – gprensa@ine.es

Information Area: Telephone number: (+34) 91 583 91 00 – www.ine.es/infoine/?L=1

Industrial Turnover Index. Base 2015

January 2022

Provisional data

1. Turnover indices¹

Seasonally and calendar adjusted

	Index	Rate (%)		Year-to-date average
		Monthly	Annual	
TOTAL INDEX	130.9	3.3	18.5	18.5
1. Consumer goods	119.2	0.9	10.8	10.8
1.1. Durable consumer goods	123.3	5.3	12.7	12.7
1.2. Non-durable consumer goods	120.2	1.0	11.0	11.0
2. Capital goods	109.1	2.2	-1.1	-1.1
3. Intermediate goods	143.1	2.1	26.4	26.4
4. Energy ²	152.7	-1.4	79.6	79.6

¹ Regulation (EC) no. 656/2007 of the Commission of 14 June 2007.

² Except electricity, gas, steam, air conditioning and water supply.

2. Turnover indices¹

Calendar adjusted

	Index	Rate (%)	
		Annual	Year-to-date average
TOTAL INDEX	119.3	18.6	18.6
1. Consumer goods	110.1	11.2	11.2
1.1. Durable consumer goods	106.9	12.7	12.7
1.2. Non-durable consumer goods	110.2	11.3	11.3
2. Capital goods	96.9	-0.7	-0.7
3. Intermediate goods	139.0	26.7	26.7
4. Energy ²	140.6	79.7	79.7

¹ Regulation (EC) no. 656/2007 of the Commission of 14 June 2007.

² Except electricity, gas, steam, air conditioning and water supply.

3. Turnover indices, Total and by activities Unadjusted

	Index	Rate (%)		Effect
		Annual	Year-to-date average	Annual
TOTAL INDEX	116.9	22.3	22.3	
1. CONSUMER GOODS	107.8	14.9	14.9	4.508
1.1. Durable consumer goods	104.0	17.4	17.4	0.298
- Manufacture of consumer electronics, optical instruments and photographic equipment	104.5	62.1	62.1	0.019
- Manufacture of household appliances	93.6	-4.2	-4.2	-0.024
- Manufacture of motorcycles, bicycles, vehicles for the disabled and others	217.0	40.3	40.3	0.044
- Manufacture of furniture	102.4	20.6	20.6	0.188
- Manufacture of jewellery, costume jewellery and musical instruments	103.9	86.7	86.7	0.072
1.2. Non-durable consumer goods	108.0	14.7	14.7	4.210
- Food industries (except grain mill products and food for animals)	111.0	12.3	12.3	2.129
- Manufacture of beverages	80.7	15.5	15.5	0.393
- Manufacture of tobacco	41.8	-3.0	-3.0	-0.002
- Manufacture of knitted fabrics, carpets, rope, non-woven fabrics, textile products for technical use and industrial and other textile products	105.8	17.1	17.1	0.106
- Manufacture of garments	94.1	18.5	18.5	0.155
- Leather and footwear industry	84.2	22.0	22.0	0.156
- Graphic arts and reproduction of recorded media	82.7	12.9	12.9	0.120
- Manufacture of cleaning articles, perfumes and cosmetics	132.9	14.0	14.0	0.254
- Manufacture of pharmaceutical products	140.3	24.9	24.9	0.848
- Manufacture of sporting goods; games and toys and Other manufacturing industries	86.6	16.4	16.4	0.050
2. CAPITAL GOODS	94.7	2.6	2.6	0.653
- Manufacture of metal products for construction, containers made of metal, steam generators, weapons and ammunition	100.9	25.5	25.5	0.471
- Manufacture of computers, peripherals and telecommunications equipment; appliances for measuring and navigation; radiation and medical and therapeutic equipment	103.4	-3.3	-3.3	-0.020
- Manufacture of machinery and equipment n.e.c.	95.3	13.8	13.8	0.478
- Manufacture of motor vehicles, trailers and semi-trailers	98.0	-4.0	-4.0	-0.609
- Naval, railway, aircraft and spacecraft construction. Combat vehicles	65.6	6.0	6.0	0.100
- Manufacture of medical and dental instruments and supplies	119.7	16.1	16.1	0.062
- Repair and installation of machinery and equipment	93.8	9.8	9.8	0.171
3. INTERMEDIATE GOODS	135.8	31.2	31.2	12.071
- Mining of metal ores
- Other mining and quarrying	104.8	22.1	22.1	.
- Manufacture of grain mill products, starches, and food for animals	135.6	18.9	18.9	0.655
- Preparation and spinning of textile fibres. Manufacture of woven textiles. Textile finishings	110.0	21.0	21.0	0.097
- Wood and cork industry	146.2	35.3	35.3	0.513
- Paper industry	139.8	35.8	35.8	1.037
- Chemical industry except cleaning articles, perfumes and cosmetics	144.5	39.8	39.8	2.885
- Rubber and plastic material transformation industry	125.1	20.6	20.6	0.933
- Manufacture of other non-metallic ore products	134.8	30.0	30.0	1.125
- Metallurgy; manufacture of iron, steel and ferro-alloy products	145.2	51.4	51.4	3.171
- Forging, stamping, embossing and rolling of metals. - Manufacture of tools, hardware goods, containers and other metal products	126.8	20.2	20.2	0.962
- Manufacture of electronic components, assembled printed circuits, and magnetic and optical media	161.4	20.8	20.8	0.066
- Manufacture of electrical material and equipment except household appliances	122.7	19.2	19.2	0.557
4. ENERGY¹	139.8	81.3	81.3	5.037
- Extraction of anthracite, coal and lignite
- Extraction of crude oil, petroleum and natural gas
- Manufacture of coke and refined petroleum products	140.8	81.4	81.4	5.038

¹ Except electricity, gas, steam, air conditioning and water supply.

(.) Data not available due to statistical confidentiality.

4. Turnover indices, Total and by branch of activity Unadjusted

	Index	Rate (%)		Effect Annual
		Annual	Year-to-date average	
TOTAL INDEX	116.9	22.3	22.3	
B. Mining and quarrying industries	107.7	9.6	9.6	0.068
Extraction of anthracite, coal and lignite
Extraction of crude oil, petroleum and natural gas
Mining of metal ores
Other mining and quarrying	104.8	22.1	22.1	.
C. Manufacturing industry	116.9	22.4	22.4	22.200
Food industry	114.6	13.4	13.4	2.784
Manufacture of beverages	80.7	15.5	15.5	0.393
Manufacture of tobacco	41.8	-3.0	-3.0	-0.002
Textile industry	107.6	18.7	18.7	0.203
Manufacture of garments	94.1	18.5	18.5	0.155
Leather and footwear industry	84.2	22.0	22.0	0.156
Manufacture of wood and of products of wood and cork, except furniture; base	146.2	35.3	35.3	0.513
Paper industry	139.8	35.8	35.8	1.037
Graphic arts and reproduction of recorded media	82.7	12.9	12.9	0.120
Manufacture of coke and refined petroleum products	140.8	81.4	81.4	5.038
Chemical industry	142.4	34.6	34.6	3.139
Manufacture of pharmaceutical products	140.3	24.9	24.9	0.848
Rubber and plastic material transformation industry	125.1	20.6	20.6	0.933
Manufacture of other non-metallic ore products	134.8	30.0	30.0	1.125
Metallurgy; manufacture of iron, steel and ferro-alloy products	145.2	51.4	51.4	3.171
Manufacture of metal products, except machinery and equipment	118.0	21.7	21.7	1.434
Manufacture of computer, electronic and optical products	119.4	6.7	6.7	0.064
Manufacture of electrical material and equipment	117.6	15.3	15.3	0.533
Manufacture of machinery and equipment n.e.c.	95.3	13.8	13.8	0.478
Manufacture of motor vehicles, trailers and semi-trailers	98.0	-4.0	-4.0	-0.609
Manufacture of other transport material	69.4	8.0	8.0	0.144
Manufacture of furniture	102.4	20.6	20.6	0.188
Other manufacturing industries	102.6	23.8	23.8	0.184
Repair and installation of machinery and equipment	93.8	9.8	9.8	0.171

(.) Data not available due to statistical confidentiality.

5. Turnover indices, Total and by branch of activity Unadjusted

	Index	Rate (%)	
		Annual	Year-to-date average
GENERAL INDEX	116.9	22.3	22.3
1. Domestic market	116.5	24.5	24.5
2. Non domestic market	115.5	17.3	17.3
2.1. Non domestic market, euro area	117.8	16.6	16.6
2.2. Non domestic market, non euro area	113.1	18.4	18.4

**6. Turnover indices, National and by Autonomous Community
Unadjusted**

	Index	Rate (%)	
		Annual	Year-to-date average
NATIONAL	116.9	22.3	22.3
Andalucía	120.2	34.6	34.6
Aragón	116.0	7.0	7.0
Asturias, Principado de	126.6	41.0	41.0
Balears, Illes	75.5	12.2	12.2
Canarias	84.1	20.9	20.9
Cantabria	121.6	25.0	25.0
Castilla y León	110.5	21.8	21.8
Castilla - La Mancha	115.8	29.4	29.4
Cataluña	111.9	13.8	13.8
Comunitat Valenciana	120.5	24.9	24.9
Extremadura	135.5	32.6	32.6
Galicia	131.2	19.2	19.2
Madrid, Comunidad de	97.5	24.8	24.8
Murcia, Región de	147.6	40.3	40.3
Navarra, Comunidad Foral de	116.8	8.4	8.4
País Vasco	124.2	29.5	29.5
Rioja, La	87.1	9.3	9.3