

22 April 2022

**Industrial Turnover Indices (ITI). Base 2015**  
February 2022. Provisional data

**The monthly variation of the Total Industrial Turnover Index<sup>1</sup> stands at 2.2%, after seasonal and calendar adjustment**

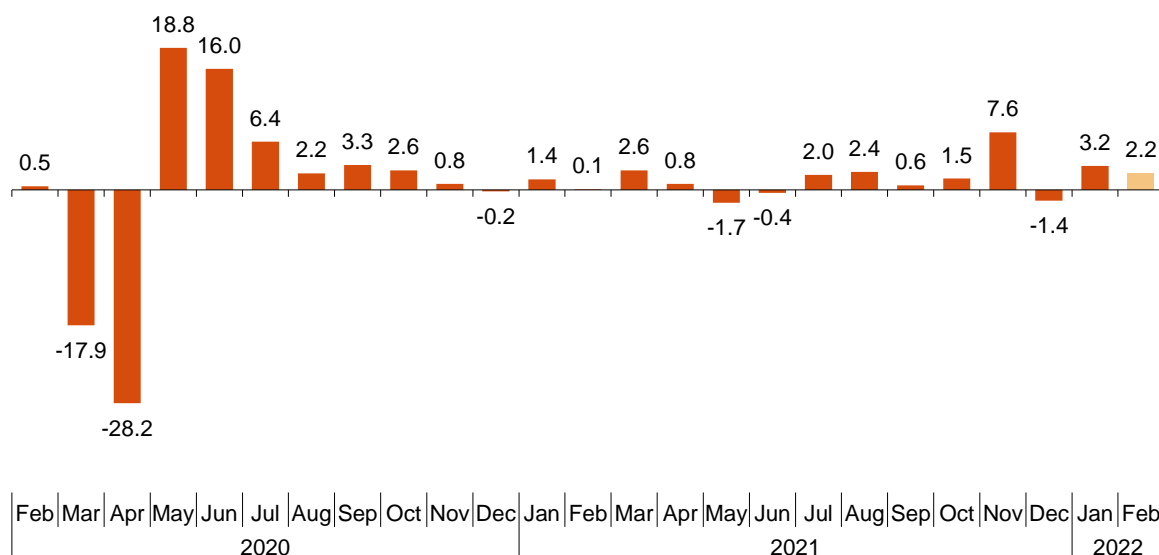
**The annual rate stands at 20.8% in the seasonal and calendar adjusted series and at 20.3% in the original series**

**Monthly trend of the Industrial Turnover**

The monthly variation of the seasonally and calendar adjusted Total Industrial Turnover Index between the months of February and January, stood at 2.2%. This rate was a point lower than the previous month.

**Industrial Turnover Index, Total. Seasonally and calendar adjusted**

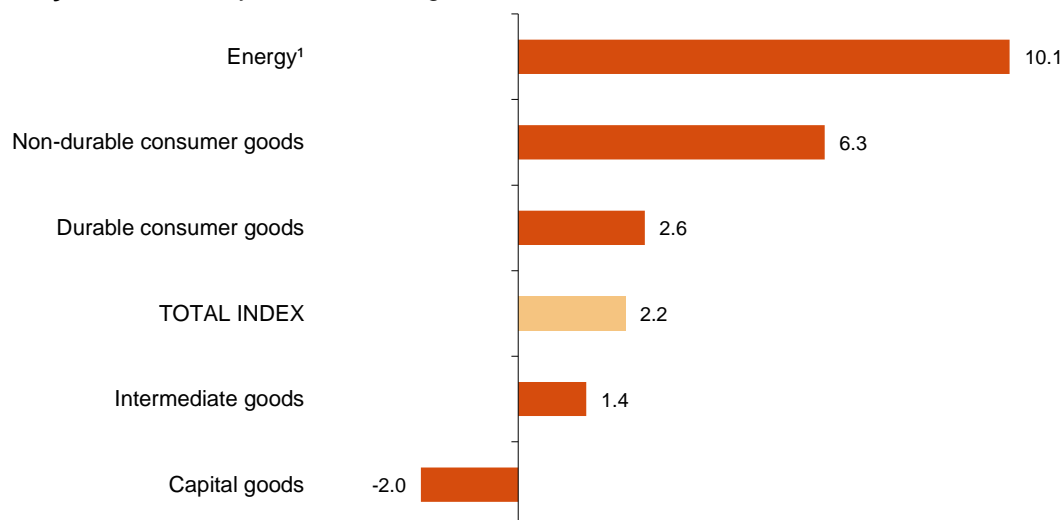
Monthly rate. Percentage



<sup>1</sup> As indicated in the methodology of this value index, the information is presented in current terms (nominal terms), this is, without adjusting the price variation effects.

By Main Industrial Groupings (MIGs), four of the five sectors showed positive monthly rates. It is worth highlighting the increase in *Energy*<sup>2</sup> (10.1%), followed by *Non-durable consumer goods* (6.3%). The only sector that decreased was *Capital goods* (-2.0%).

**Industrial Turnover Indices, Total and by MIGs. Seasonally and calendar adjusted. February 2022.** Monthly rate. Percentage



<sup>1</sup> Except electricity, gas, steam, air conditioning and water supply.

A more detailed analysis showed the branches of activity with the highest and the lowest monthly rates in the month of February.

**Branches of activity with the highest monthly rates of the Industrial Turnover Index. Seasonally and calendar adjusted**

Branch of activity (Division of the CNAE 2009)	Monthly rate (%)
Manufacture of beverages	21.6
Manufacture of tobacco	15.2
Manufacture of other transport material	13.0

**Branches of activity with the lowest monthly rates of the Industrial Turnover Index. Seasonally and calendar adjusted**

Branch of activity (Division of the CNAE 2009)	Monthly rate (%)
Manufacture of motor vehicles, trailers and semi-trailers	-7.1
Manufacture of pharmaceutical products	-3.6
Chemical industry	0.3

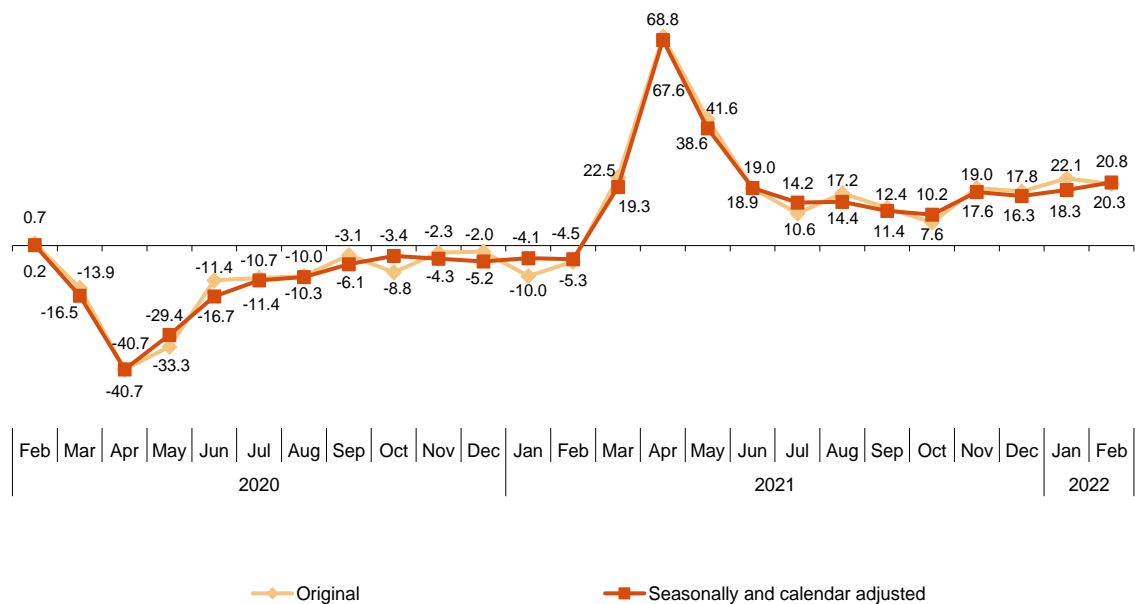
<sup>2</sup> Except electricity, gas, steam, air conditioning and water supply.

### Annual trend of the Industrial Turnover Indices

The Total Industrial Turnover Index, once adjusted for seasonal and calendar effects, showed a variation of 20.8% in February, as compared with the same month of the previous year. This rate was 2.5 points higher than the one registered in January.

The ITI original series registered an annual variation of 20.3%. This rate was 1.8 points lower than the one in January.

#### Industrial Turnover Index, Total. Seasonally and calendar adjusted Annual rates. Percentage



By MIGs, the seasonally and calendar adjusted indices registered positive annual rates in four of five of the analysed sectors, highlighting the increase in *Energy*<sup>2</sup> (94.1%).

#### Industrial Turnover Index, Total and by MIGs. Annual rates

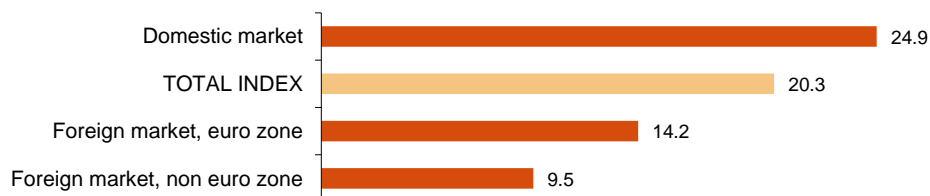
	Unadjusted index	Seasonally and calendar adjusted index
	Annual rate (%)	Annual rate (%)
<b>TOTAL INDEX</b>	<b>20.3</b>	<b>20.8</b>
1. Consumer goods	16.7	16.9
1.1. Durable consumer goods	19.2	18.6
1.2. Non-durable consumer goods	16.5	16.6
2. Capital goods	-0.2	-0.1
3. Intermediate goods	25.7	26.0
4. Energy <sup>1</sup>	93.6	94.1

<sup>1</sup> Except electricity, gas, steam, air conditioning and water supply.

### Annual trend of the Industrial Turnover Indices by market. Original series

In February all markets showed positive annual rates. It is worth noting the increase registered in the domestic market (24.9%).

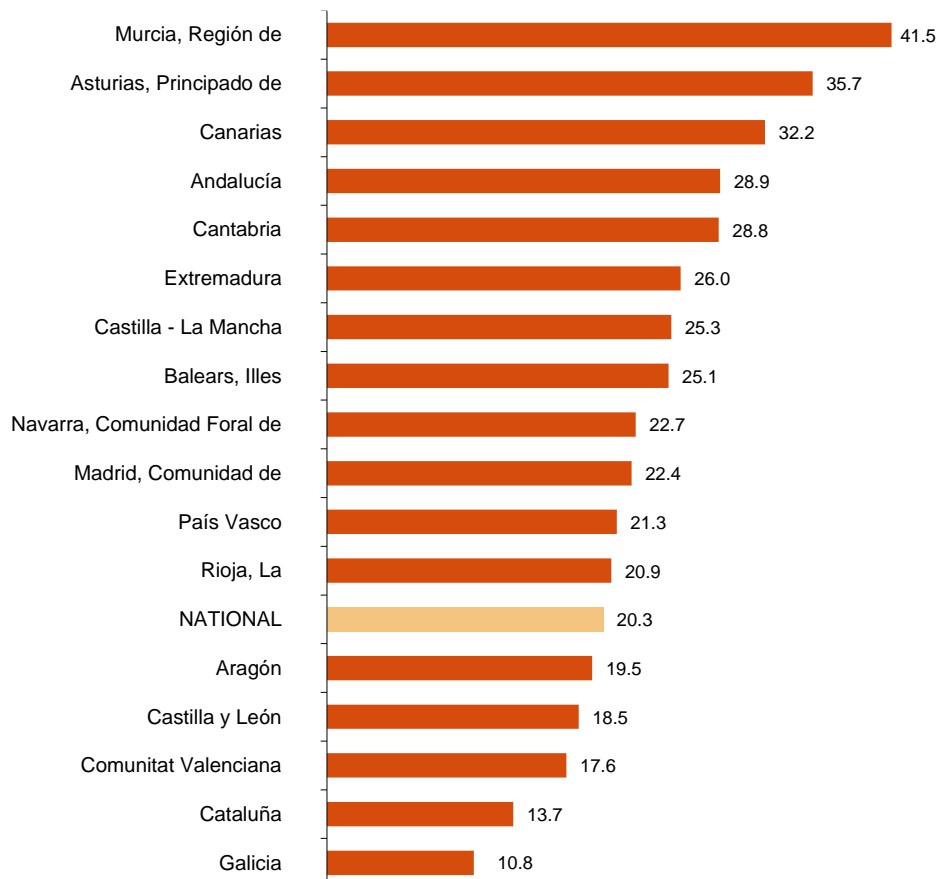
#### Industrial Turnover Index, Total and by market February 2022. Annual rate. Percentage



### Results by Autonomous Community. Annual rates of the Industrial Turnover. Original series

Turnover increased as compared to February 2021 in all the autonomous communities. The largest increases were recorded in Región de Murcia (41.5%), Principado de Asturias (35.7%) and Canarias (32.2%). The smallest were recorded in Galicia (10.8%), Cataluña (13.7%) and Comunitat Valenciana (17.6%).

#### Industrial Turnover Index, Total and by Autonomous Community February 2022. Annual rate. Percentage



## Revisions and data update

On the press release day, INE has updated ITI data series corresponding to the last 13 months. In the case of calendar adjusted and seasonally and calendar adjusted series, according to INE standard, series are revised since its beginning. Results are available at INEBase.

## Methodological note

Industrial Turnover Indices (ITI) are short-term indicators aiming at measuring the monthly evolution of the industrial sector, excluding the construction.

The required information is collected since January 2002, together with the Industrial New Orders Received Indices (INORI) through a survey addressed to more than 12.000 industrial establishments throughout the country.

**Survey Type:** ongoing monthly.

**Base year:** 2015.

**Population scope:** units of economic activity whose main activity is included in Sections B: Extractive industries (with the exception, due to their not being relevant to Spanish industry, of division 09) or C: Manufacturing industry of CNAE-2009.

**Geographical scope:** the whole country, excluding Ceuta and Melilla.

**Sample size:** Approx. 12,000 establishments.

**Data collection:** monthly, value of total business turnover broken down by market.

**Collection method:** fill in a questionnaire by the respondent using one of the following methods: internet (IRIA system), email, fax, telephone or post.

Further information is available in the methodology:

[http://www.ine.es/dyngs/INEbase/en/operacion.htm?c=Estadistica\\_C&cid=1254736148782&menu=metodologia&idp=1254735576715](http://www.ine.es/dyngs/INEbase/en/operacion.htm?c=Estadistica_C&cid=1254736148782&menu=metodologia&idp=1254735576715)

And in the standardised methodological report:

<http://www.ine.es/dynt3/metadatos/en/RespuestaDatos.html?oe=30052>

INE's statistics are produced according to the European Statistics Code of Practice, that underlies the policy and strategy of the institution quality. For further information, take a look at the section [Quality at INE and Code of Practice](#) at INE Website.

---

For further information see **INEbase: [www.ine.es/en/](http://www.ine.es/en/)** Twitter: **@es\_ine**

All press releases at: **[www.ine.es/en/prensa/prensa\\_en.htm](http://www.ine.es/en/prensa/prensa_en.htm)**

**Press office:** Telephone numbers: (+34) 91 583 93 63 /94 08 – **[gprensa@ine.es](mailto:gprensa@ine.es)**

**Information Area:** Telephone number: (+34) 91 583 91 00 – **[www.ine.es/infoine/?L=1](http://www.ine.es/infoine/?L=1)**

---

## Industrial Turnover Index. Base 2015

February 2022

Provisional data

### 1. Turnover indices<sup>1</sup>

#### Seasonally and calendar adjusted

	Index	Rate (%)		Year-to-date average
		Monthly	Annual	
<b>TOTAL INDEX</b>	<b>133.6</b>	<b>2.2</b>	<b>20.8</b>	<b>19.5</b>
1. Consumer goods	126.9	6.4	16.9	13.9
1.1. Durable consumer goods	126.3	2.6	18.6	15.7
1.2. Non-durable consumer goods	127.8	6.3	16.6	13.8
2. Capital goods	106.7	-2.0	-0.1	-0.6
3. Intermediate goods	145.0	1.4	26.0	26.0
4. Energy <sup>2</sup>	168.6	10.1	94.1	86.6

<sup>1</sup> Regulation (EC) no. 656/2007 of the Commission of 14 June 2007.

<sup>2</sup> Except electricity, gas, steam, air conditioning and water supply.

### 2. Turnover indices<sup>1</sup>

#### Calendar adjusted

	Index	Rate (%)	
		Annual	Year-to-date average
<b>TOTAL INDEX</b>	<b>128.2</b>	<b>20.7</b>	<b>19.6</b>
1. Consumer goods	117.4	17.1	14.2
1.1. Durable consumer goods	124.0	19.6	16.5
1.2. Non-durable consumer goods	116.9	16.9	14.2
2. Capital goods	108.5	0.0	-0.4
3. Intermediate goods	145.9	26.2	26.2
4. Energy <sup>2</sup>	155.8	94.2	86.6

<sup>1</sup> Regulation (EC) no. 656/2007 of the Commission of 14 June 2007.

<sup>2</sup> Except electricity, gas, steam, air conditioning and water supply.

### 3. Turnover indices, Total and by activities Unadjusted

	Index	Rate (%)		Effect
		Annual	Year-to-date average	Annual
<b>TOTAL INDEX</b>	<b>126.9</b>	<b>20.3</b>	<b>21.1</b>	
<b>1. CONSUMER GOODS</b>	<b>115.9</b>	<b>16.7</b>	<b>15.9</b>	<b>4.852</b>
1.1. Durable consumer goods	122.6	19.2	18.6	0.346
- Manufacture of consumer electronics, optical instruments and photographic equipment	120.8	41.0	50.1	0.015
- Manufacture of household appliances	104.1	6.1	0.9	0.032
- Manufacture of motorcycles, bicycles, vehicles for the disabled and others	253.0	36.5	38.3	0.043
- Manufacture of furniture	126.4	20.3	20.7	0.208
- Manufacture of jewellery, costume jewellery and musical instruments	108.5	50.0	66.0	0.049
1.2. Non-durable consumer goods	115.5	16.5	15.7	4.506
- Food industries (except grain mill products and food for animals)	117.2	13.2	12.8	2.174
- Manufacture of beverages	95.8	32.6	23.9	0.772
- Manufacture of tobacco	59.8	-0.1	-1.3	0.000
- Manufacture of knitted fabrics, carpets, rope, non-woven fabrics, textile products for technical use and industrial and other textile products	115.5	19.2	18.2	0.116
- Manufacture of garments	95.1	28.6	23.4	0.202
- Leather and footwear industry	107.4	25.5	24.0	0.203
- Graphic arts and reproduction of recorded media	91.8	15.0	13.9	0.138
- Manufacture of cleaning articles, perfumes and cosmetics	146.2	17.6	15.9	0.309
- Manufacture of pharmaceutical products	137.2	16.0	20.3	0.519
- Manufacture of sporting goods; games and toys and Other manufacturing industries	105.3	22.8	19.4	0.073
<b>2. CAPITAL GOODS</b>	<b>106.8</b>	<b>-0.2</b>	<b>1.1</b>	<b>-0.052</b>
- Manufacture of metal products for construction, containers made of metal, steam generators, weapons and ammunition	123.2	24.3	25.9	0.502
- Manufacture of computers, peripherals and telecommunications equipment; appliances for measuring and navigation; radiation and medical and therapeutic equipment	123.6	-8.3	-6.1	-0.059
- Manufacture of machinery and equipment n.e.c.	108.8	9.5	11.6	0.352
- Manufacture of motor vehicles, trailers and semi-trailers	98.4	-12.4	-8.6	-1.864
- Naval, railway, aircraft and spacecraft construction. Combat vehicles	128.8	32.4	22.1	0.775
- Manufacture of medical and dental instruments and supplies	131.2	10.3	12.9	0.041
- Repair and installation of machinery and equipment	107.3	11.3	10.2	0.200
<b>3. INTERMEDIATE GOODS</b>	<b>144.8</b>	<b>25.7</b>	<b>28.1</b>	<b>10.024</b>
- Mining of metal ores	.	.	.	.
- Other mining and quarrying	123.7	21.4	21.0	.
- Manufacture of grain mill products, starches, and food for animals	134.8	18.1	18.5	0.570
- Preparation and spinning of textile fibres. Manufacture of woven textiles. Textile finishings	121.2	22.7	21.6	0.103
- Wood and cork industry	159.5	35.5	35.9	0.510
- Paper industry	143.4	35.3	35.4	0.954
- Chemical industry except cleaning articles, perfumes and cosmetics	147.4	29.4	34.1	2.127
- Rubber and plastic material transformation industry	135.5	19.1	19.8	0.859
- Manufacture of other non-metallic ore products	147.9	21.6	24.8	0.859
- Metallurgy; manufacture of iron, steel and ferro-alloy products	156.5	38.3	44.2	2.527
- Forging, stamping, embossing and rolling of metals. - Manufacture of tools, hardware goods, containers and other metal products	141.3	21.6	20.9	1.028
- Manufacture of electronic components, assembled printed circuits, and magnetic and optical media	166.9	16.0	18.3	0.049
- Manufacture of electrical material and equipment except household appliances	135.5	9.2	12.5	0.291
<b>4. ENERGY<sup>1</sup></b>	<b>155.6</b>	<b>93.6</b>	<b>87.2</b>	<b>5.476</b>
- Extraction of anthracite, coal and lignite	.	.	.	.
- Extraction of crude oil, petroleum and natural gas	.	.	.	.
- Manufacture of coke and refined petroleum products	156.8	93.6	87.2	5.477

<sup>1</sup> Except electricity, gas, steam, air conditioning and water supply.

(.) Data not available due to statistical confidentiality.

#### 4. Turnover indices, Total and by branch of activity Unadjusted

	Index	Rate (%)		Effect Annual
		Annual	Year-to-date average	
<b>TOTAL INDEX</b>	<b>126.9</b>	<b>20.3</b>	<b>21.1</b>	
<b>B. Mining and quarrying industries</b>	130.1	20.6	14.8	0.147
Extraction of anthracite, coal and lignite	.	.	.	.
Extraction of crude oil, petroleum and natural gas	.	.	.	.
Mining of metal ores	.	.	.	.
Other mining and quarrying	123.7	21.4	21.0	.
<b>C. Manufacturing industry</b>	126.9	20.3	21.2	20.153
Food industry	119.8	14.0	13.8	2.744
Manufacture of beverages	95.8	32.6	23.9	0.772
Manufacture of tobacco	59.8	-0.1	-1.3	0.000
Textile industry	117.9	20.7	19.6	0.219
Manufacture of garments	95.1	28.6	23.4	0.202
Leather and footwear industry	107.4	25.5	24.0	0.203
Manufacture of wood and of products of wood and cork, except furniture; base	159.5	35.5	35.9	0.510
Paper industry	143.4	35.3	35.4	0.954
Graphic arts and reproduction of recorded media	91.8	15.0	13.9	0.138
Manufacture of coke and refined petroleum products	156.8	93.6	87.2	5.477
Chemical industry	147.2	27.1	30.5	2.436
Manufacture of pharmaceutical products	137.2	16.0	20.3	0.519
Rubber and plastic material transformation industry	135.5	19.1	19.8	0.859
Manufacture of other non-metallic ore products	147.9	21.6	24.8	0.859
Metallurgy; manufacture of iron, steel and ferro-alloy products	156.5	38.3	44.2	2.527
Manufacture of metal products, except machinery and equipment	135.2	22.5	22.4	1.529
Manufacture of computer, electronic and optical products	135.3	0.5	3.3	0.006
Manufacture of electrical material and equipment	130.0	8.7	10.8	0.322
Manufacture of machinery and equipment n.e.c.	108.8	9.5	11.6	0.352
Manufacture of motor vehicles, trailers and semi-trailers	98.4	-12.4	-8.6	-1.864
Manufacture of other transport material	131.9	32.6	23.0	0.818
Manufacture of furniture	126.4	20.3	20.7	0.208
Other manufacturing industries	116.1	19.9	21.5	0.163
Repair and installation of machinery and equipment	107.3	11.3	10.2	0.200

(.) Data not available due to statistical confidentiality.

#### 5. Turnover indices, Total and by branch of activity Unadjusted

	Index	Rate (%)	
		Annual	Year-to-date average
<b>GENERAL INDEX</b>	<b>126.9</b>	<b>20.3</b>	<b>21.1</b>
1. Domestic market	126.0	24.9	24.7
2. Non domestic market	126.6	12.6	14.7
2.1. Non domestic market, euro area	127.2	14.2	15.3
2.2. Non domestic market, non euro area	126.3	9.5	13.4



**6. Turnover indices, National and by Autonomous Community  
Unadjusted**

	Index	Rate (%)	
		Annual	Year-to-date average
<b>NATIONAL</b>	<b>126.9</b>	<b>20.3</b>	<b>21.1</b>
Andalucía	129.3	28.9	31.6
Aragón	129.2	19.5	13.7
Asturias, Principado de	129.8	35.7	38.0
Balears, Illes	94.3	25.1	19.3
Canarias	102.0	32.2	26.7
Cantabria	134.7	28.8	26.9
Castilla y León	114.4	18.5	20.1
Castilla - La Mancha	124.8	25.3	26.4
Cataluña	123.2	13.7	13.8
Comunitat Valenciana	130.9	17.6	20.7
Extremadura	143.6	26.0	29.6
Galicia	131.7	10.8	14.9
Madrid, Comunidad de	116.0	22.4	23.4
Murcia, Región de	161.6	41.5	39.5
Navarra, Comunidad Foral de	137.6	22.7	15.8
País Vasco	129.1	21.3	25.1
Rioja, La	99.0	20.9	14.7