

22 June 2022

Industrial Turnover Indices (ITI). Base 2015

April 2022. Provisional data

The monthly variation of the Total Industrial Turnover Index¹ stands at 15.8%, after seasonal and calendar adjustment

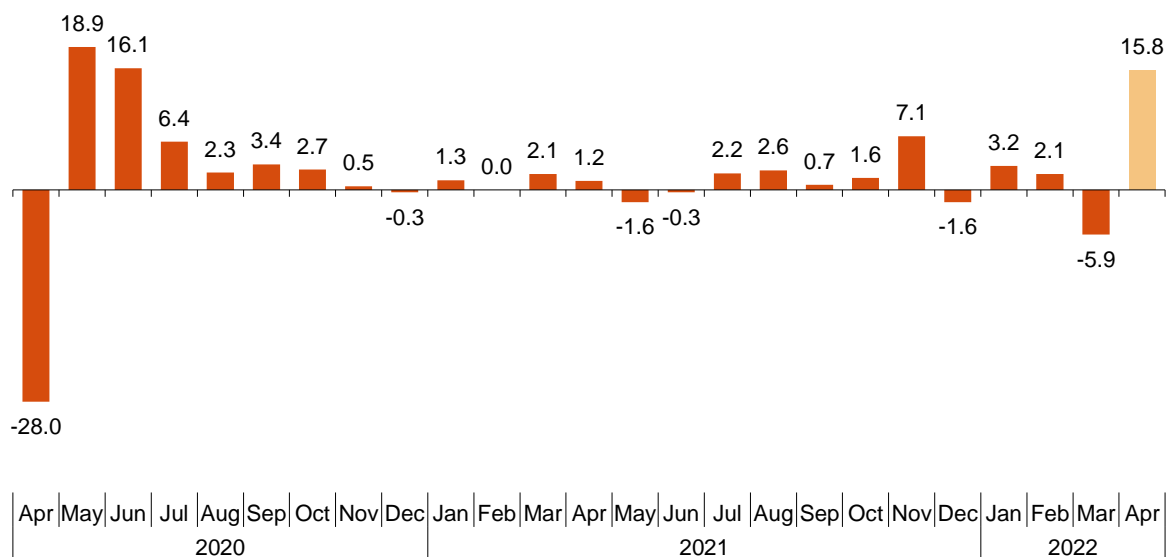
The annual rate stands at 27.4% in the seasonal and calendar adjusted series and at 23.1% in the original series

Monthly trend of the Industrial Turnover

The monthly variation of the seasonally and calendar adjusted Total Industrial Turnover Index between the months of April and March, stood at 15.8%. This rate was 21.7 points higher than the previous month.

Industrial Turnover Index, Total. Seasonally and calendar adjusted

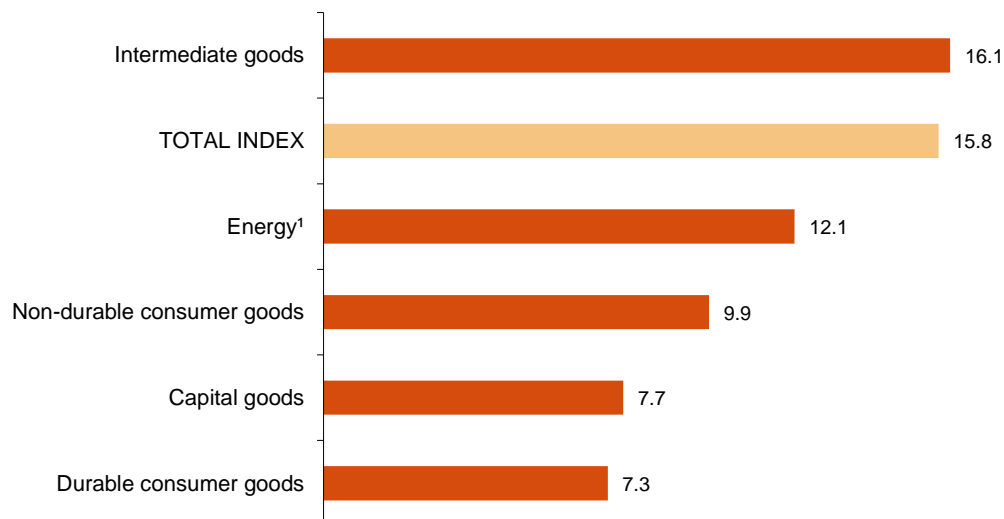
Monthly rate. Percentage



¹ As indicated in the methodology of this value index, the information is presented in current terms (nominal terms), this is, without adjusting the price variation effects.

By Main Industrial Groupings (MIGs), all sectors showed positive monthly rates. It is worth highlighting the increase in *Intermediate goods* (16.1%), followed by *Energy*² (12.1%).

Industrial Turnover Indices, Total and by MIGs. Seasonally and calendar adjusted. April 2022. Monthly rate. Percentage



¹ Except electricity, gas, steam, air conditioning and water supply.

A more detailed analysis showed the branches of activity with the highest and the lowest monthly rates in the month of April.

Branches of activity with the highest monthly rates of the Industrial Turnover Index. Seasonally and calendar adjusted

Branch of activity (Division of the CNAE 2009)	Monthly rate (%)
Metallurgy; manufacture of iron, steel and ferro-alloy products	27.9
Manufacture of other non-metallic ore products	26.1
Manufacture of motor vehicles, trailers and semi-trailers	24.7

Branches of activity with the lowest monthly rates of the Industrial Turnover Index. Seasonally and calendar adjusted

Branch of activity (Division of the CNAE 2009)	Monthly rate (%)
Manufacture of other transport material	-23.3
Manufacture of tobacco	-5.3
Manufacture of computer, electronic and optical products	-4.6

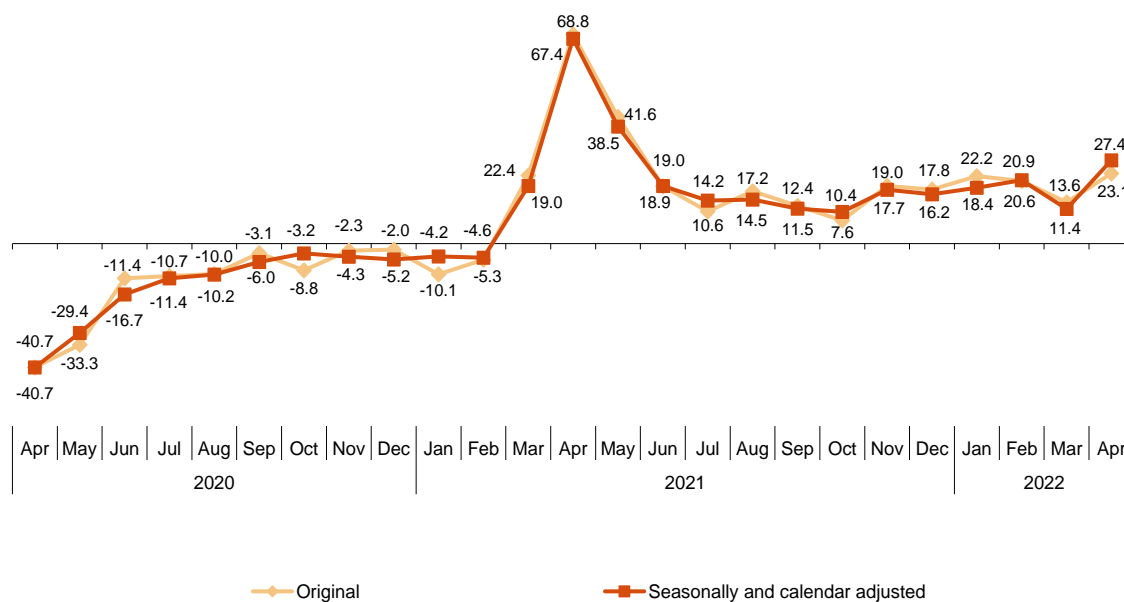
² Except electricity, gas, steam, air conditioning and water supply.

Annual trend of the Industrial Turnover Indices

The Total Industrial Turnover Index, once adjusted for seasonal and calendar effects, showed a variation of 27.4% in April, as compared with the same month of the previous year. This rate was 16 points higher than the one registered in March.

The ITI original series registered an annual variation of 23.1%. This rate was 9.5 points higher than the one in March.

Industrial Turnover Index, Total. Seasonally and calendar adjusted Annual rates. Percentage



By MIGs, the seasonally and calendar adjusted indices registered positive annual rates in five of five of the analysed sectors, highlighting the increase in *Energy*² (145.2%).

Industrial Turnover Index, Total and by MIGs. Annual rates

	Index	Rate (%)	
		Annual	Year-to-date average
TOTAL INDEX	144.3	27.6	19.6
1. Consumer goods	131.6	20.5	14.4
1.1. Durable consumer goods	129.4	20.4	15.0
1.2. Non-durable consumer goods	131.5	19.3	14.5
2. Capital goods	109.5	1.6	-1.7
3. Intermediate goods	161.1	29.0	23.4
4. <i>Energy</i> ²	227.8	145.6	106.5

¹ Regulation (EC) no. 656/2007 of the Commission of 14 June 2007.

² Except electricity, gas, steam, air conditioning and water supply.

Annual trend of the Industrial Turnover Indices by market. Original series

In April all markets showed positive annual rates. It is worth noting the increase registered in the domestic market (28.0%).

Industrial Turnover Index, Total and by market

April 2022. Annual rate. Percentage

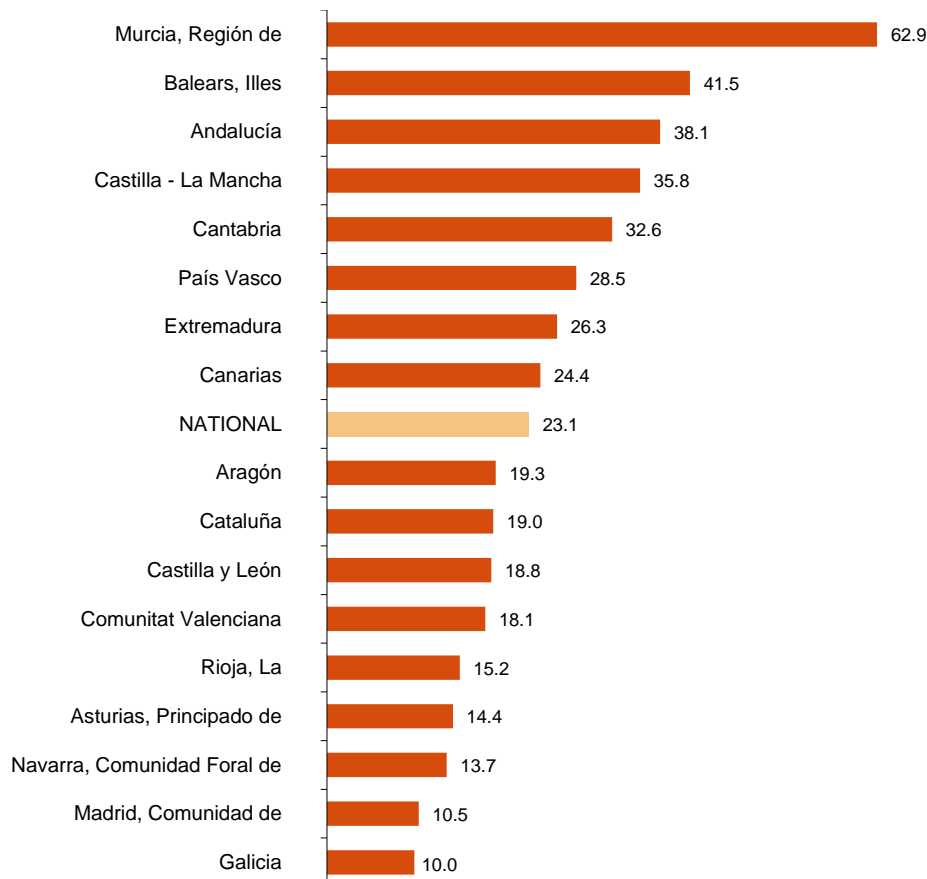


Results by Autonomous Community. Annual rates of the Industrial Turnover. Original series

Turnover increased as compared to April 2021 in all the autonomous communities. The largest increases were recorded in Región de Murcia (62.9%), Illes Balears (41.5%) and Andalucía (38.1%). The lowest in Galicia (10.0%), Comunidad de Madrid (10.5%) and Comunidad Foral de Navarra (13.7%).

Industrial Turnover Index, Total and by Autonomous Community

April 2022. Annual rate. Percentage



Revisions and data update

On the press release day, INE has updated ITI data series corresponding to the last 13 months. In the case of calendar adjusted and seasonally and calendar adjusted series, according to INE standard, series are revised since its beginning. Results are available at INEBase.

Methodological note

Industrial Turnover Indices (ITI) are short-term indicators aiming at measuring the monthly evolution of the industrial sector, excluding the construction.

The required information is collected since January 2002, together with the Industrial New Orders Received Indices (INORI) through a survey addressed to more than 12.000 industrial establishments throughout the country.

Survey Type: ongoing monthly.

Base year: 2015.

Population scope: units of economic activity whose main activity is included in Sections B: Extractive industries (with the exception, due to their not being relevant to Spanish industry, of division 09) or C: Manufacturing industry of CNAE-2009.

Geographical scope: the whole country, excluding Ceuta and Melilla.

Sample size: Approx. 12,000 establishments.

Data collection: monthly, value of total business turnover broken down by market.

Collection method: fill in a questionnaire by the respondent using one of the following methods: internet (IRIA system), email, fax, telephone or post.

Further information is available in the methodology:

http://www.ine.es/dyngs/INEbase/en/operacion.htm?c=Estadistica_C&cid=1254736148782&menu=metodologia&idp=1254735576715

And in the standardised methodological report:

<http://www.ine.es/dynt3/metadatos/en/RespuestaDatos.html?oe=30052>

INE's statistics are produced according to the European Statistics Code of Practice, that underlies the policy and strategy of the institution quality. For further information, take a look at the section [Quality at INE and Code of Practice](#) at INE Website.

For further information see **INEbase:** www.ine.es/en/ Twitter: [@es_ine](https://twitter.com/es_ine)

All press releases at: www.ine.es/en/prensa/prensa_en.htm

Press office: Telephone numbers: (+34) 91 583 93 63 /94 08 – gprensa@ine.es

Information Area: Telephone number: (+34) 91 583 91 00 – www.ine.es/infoine/?L=1

Industrial Turnover Index. Base 2015

April 2022

Provisional data

1. Turnover indices¹

Seasonally and calendar adjusted

	Index	Rate (%)		Year-to-date average
		Monthly	Annual	
TOTAL INDEX	145.4	15.8	27.4	19.6
1. Consumer goods	134.0	10.8	20.6	14.5
1.1. Durable consumer goods	130.2	7.3	18.8	14.8
1.2. Non-durable consumer goods	133.2	9.9	19.3	14.3
2. Capital goods	110.0	7.7	1.4	-1.6
3. Intermediate goods	155.1	16.1	28.4	23.6
4. Energy ²	221.3	12.1	145.2	105.5

¹ Regulation (EC) no. 656/2007 of the Commission of 14 June 2007.

² Except electricity, gas, steam, air conditioning and water supply.

2. Turnover indices¹

Calendar adjusted

	Index	Rate (%)	
		Annual	Year-to-date average
TOTAL INDEX	144.3	27.6	19.6
1. Consumer goods	131.6	20.5	14.4
1.1. Durable consumer goods	129.4	20.4	15.0
1.2. Non-durable consumer goods	131.5	19.3	14.5
2. Capital goods	109.5	1.6	-1.7
3. Intermediate goods	161.1	29.0	23.4
4. Energy ²	227.8	145.6	106.5

¹ Regulation (EC) no. 656/2007 of the Commission of 14 June 2007.

² Except electricity, gas, steam, air conditioning and water supply.

3. Turnover indices, Total and by activities Unadjusted

	Index	Rate (%)		Effect
		Annual	Year-to-date average	Annual
TOTAL INDEX	139.8	23.1	19.6	
1. CONSUMER GOODS	128.1	17.5	14.5	5.176
1.1. Durable consumer goods	124.7	15.1	15.1	0.267
- Manufacture of consumer electronics, optical instruments and photographic equipment	134.6	29.9	41.1	0.012
- Manufacture of household appliances	99.0	9.8	1.8	0.044
- Manufacture of motorcycles, bicycles, vehicles for the disabled and others	236.6	1.6	21.1	0.002
- Manufacture of furniture	132.2	16.0	16.2	0.165
- Manufacture of jewellery, costume jewellery and musical instruments	117.0	41.6	54.1	0.043
1.2. Non-durable consumer goods	128.3	17.6	14.4	4.909
- Food industries (except grain mill products and food for animals)	135.1	18.3	12.9	3.088
- Manufacture of beverages	116.1	22.7	17.4	0.654
- Manufacture of tobacco	46.3	-27.8	-9.2	-0.019
- Manufacture of knitted fabrics, carpets, rope, non-woven fabrics, textile products for technical use and industrial and other textile products	122.4	10.4	14.0	0.067
- Manufacture of garments	111.8	31.0	23.9	0.234
- Leather and footwear industry	100.5	29.6	25.7	0.199
- Graphic arts and reproduction of recorded media	95.4	13.5	15.8	0.122
- Manufacture of cleaning articles, perfumes and cosmetics	146.9	16.6	14.7	0.275
- Manufacture of pharmaceutical products	129.3	8.5	15.2	0.258
- Manufacture of sporting goods; games and toys and Other manufacturing industries	115.8	8.9	13.4	0.033
2. CAPITAL GOODS	105.9	-2.2	-1.5	-0.533
- Manufacture of metal products for construction, containers made of metal, steam generators, weapons and ammunition	128.0	12.0	16.7	0.265
- Manufacture of computers, peripherals and telecommunications equipment; appliances for measuring and navigation; radiation and medical and therapeutic equipment	115.3	-11.8	-4.1	-0.075
- Manufacture of machinery and equipment n.e.c.	118.0	6.8	5.9	0.262
- Manufacture of motor vehicles, trailers and semi-trailers	100.8	-4.7	-9.9	-0.615
- Naval, railway, aircraft and spacecraft construction. Combat vehicles	82.1	-22.9	12.4	-0.556
- Manufacture of medical and dental instruments and supplies	125.4	-1.7	8.8	-0.007
- Repair and installation of machinery and equipment	119.8	10.4	9.8	0.192
3. INTERMEDIATE GOODS	155.7	23.9	23.4	9.442
- Mining of metal ores
- Other mining and quarrying	137.6	28.9	22.2	.
- Manufacture of grain mill products, starches, and food for animals	155.2	20.3	19.0	0.671
- Preparation and spinning of textile fibres. Manufacture of woven textiles. Textile finishings	117.0	14.3	18.9	0.062
- Wood and cork industry	174.1	29.3	28.4	0.447
- Paper industry	158.5	33.6	31.8	0.945
- Chemical industry except cleaning articles, perfumes and cosmetics	161.5	28.0	29.8	2.085
- Rubber and plastic material transformation industry	136.6	14.5	15.1	0.637
- Manufacture of other non-metallic ore products	159.0	19.7	17.9	0.796
- Metallurgy; manufacture of iron, steel and ferro-alloy products	172.8	33.9	32.8	2.371
- Forging, stamping, embossing and rolling of metals. - Manufacture of tools, hardware goods, containers and other metal products	144.4	22.1	19.4	0.991
- Manufacture of electronic components, assembled printed circuits, and magnetic and optical media	159.5	4.3	14.8	0.013
- Manufacture of electrical material and equipment except household appliances	140.8	9.6	10.3	0.292
4. ENERGY¹	225.7	142.9	106.5	8.978
- Extraction of anthracite, coal and lignite
- Extraction of crude oil, petroleum and natural gas
- Manufacture of coke and refined petroleum products	227.3	142.9	106.6	8.978

¹ Except electricity, gas, steam, air conditioning and water supply.

(.) Data not available due to statistical confidentiality.

4. Turnover indices, Total and by branch of activity Unadjusted

	Index	Rate (%)		Effect Annual
		Annual	Year-to-date average	
TOTAL INDEX	139.8	23.1	19.6	
B. Mining and quarrying industries	145.3	17.1	16.9	0.130
Extraction of anthracite, coal and lignite
Extraction of crude oil, petroleum and natural gas
Mining of metal ores
Other mining and quarrying	137.6	28.9	22.2	.
C. Manufacturing industry	139.7	23.1	19.6	22.931
Food industry	138.1	18.6	13.9	3.759
Manufacture of beverages	116.1	22.7	17.4	0.654
Manufacture of tobacco	46.3	-27.8	-9.2	-0.019
Textile industry	120.1	12.0	16.1	0.129
Manufacture of garments	111.8	31.0	23.9	0.234
Leather and footwear industry	100.5	29.6	25.7	0.199
Manufacture of wood and of products of wood and cork, except furniture; base	174.1	29.3	28.4	0.447
Paper industry	158.5	33.6	31.8	0.945
Graphic arts and reproduction of recorded media	95.4	13.5	15.8	0.122
Manufacture of coke and refined petroleum products	227.3	142.9	106.6	8.978
Chemical industry	158.9	25.9	26.9	2.360
Manufacture of pharmaceutical products	129.3	8.5	15.2	0.258
Rubber and plastic material transformation industry	136.6	14.5	15.1	0.637
Manufacture of other non-metallic ore products	159.0	19.7	17.9	0.796
Metallurgy; manufacture of iron, steel and ferro-alloy products	172.8	33.9	32.8	2.371
Manufacture of metal products, except machinery and equipment	138.8	18.7	18.6	1.256
Manufacture of computer, electronic and optical products	128.5	-5.1	3.4	-0.050
Manufacture of electrical material and equipment	133.5	9.6	9.1	0.336
Manufacture of machinery and equipment n.e.c.	118.0	6.8	5.9	0.262
Manufacture of motor vehicles, trailers and semi-trailers	100.8	-4.7	-9.9	-0.615
Manufacture of other transport material	86.0	-21.6	12.8	-0.554
Manufacture of furniture	132.2	16.0	16.2	0.165
Other manufacturing industries	119.8	7.9	16.1	0.069
Repair and installation of machinery and equipment	119.8	10.4	9.8	0.192

(.) Data not available due to statistical confidentiality.

5. Turnover indices, Total and by branch of activity Unadjusted

	Index	Rate (%)	
		Annual	Year-to-date average
GENERAL INDEX	139.8	23.1	19.6
1. Domestic market	141.9	28.0	23.7
2. Non domestic market	133.2	13.7	12.2
2.1. Non domestic market, euro area	130.9	13.5	13.6
2.2. Non domestic market, non euro area	137.3	13.2	9.2

**6. Turnover indices, National and by Autonomous Community
Unadjusted**

	Index	Rate (%)	
		Annual	Year-to-date average
NATIONAL	139.8	23.1	19.6
Andalucía	156.4	38.1	31.4
Aragón	131.0	19.3	14.1
Asturias, Principado de	151.8	14.4	19.9
Balears, Illes	123.3	41.5	26.1
Canarias	103.6	24.4	27.5
Cantabria	148.2	32.6	22.9
Castilla y León	120.9	18.8	17.2
Castilla - La Mancha	148.5	35.8	26.2
Cataluña	135.6	19.0	14.8
Comunitat Valenciana	140.0	18.1	17.8
Extremadura	168.4	26.3	23.4
Galicia	144.8	10.0	7.4
Madrid, Comunidad de	113.5	10.5	17.7
Murcia, Región de	203.9	62.9	46.1
Navarra, Comunidad Foral de	137.9	13.7	15.5
País Vasco	139.8	28.5	23.2
Rioja, La	104.5	15.2	13.8