

14 August 2020

Industrial Turnover Indices (ITI). Base 2015
June 2020. Provisional data**The monthly variation of the Total Industrial Turnover Index¹ stands at 17.7%, after seasonal and calendar adjustment****The annual rate stands at -16.5% in the seasonal and calendar adjusted series and at -11.4% in the original series****COVID-19's Effects on the June RTI**

- During the month of June, the different territories continued to progress through the de-escalation process, until the “new normality” was declared on June 21. According to Royal Decree 555/2020, the state of alarm ended on said date. Industry recovered rhythm during this month, with a growth of 17.7% compared to May.
- The greatest dynamism compared to the previous month was observed in the *Manufacture of motor vehicles, trailers and semi-trailers* (66.8%) and in *Furniture manufacturing* (46.1%).
- In global terms, the industry's turnover has not yet reached the levels of a year ago, with a decrease of 16.5%.
- The decrease in production and the drop in prices in *Coke ovens and oil refining* caused this activity to register the greatest decrease compared to June 2019 (-44.4%) followed by the *Leather and footwear industry* (-31.9%).
- For their part, turnover for the *Tobacco Industry* (9.0%), the *Manufacture of pharmaceutical products* (3.5%) and the *Manufacture of computer, electronic and optical products* (2.0%) increased compared to the previous year.
- Compared to the first half of 2019, industry turnover recorded a 17.1% decrease. *Energy*² (-38.9%), *Durable consumer goods* (-23.3%) and *Capital goods* (-23.0%) show the greatest decreases; while *Non-durable consumer goods* (-5.5%) have withstood the crisis the best.

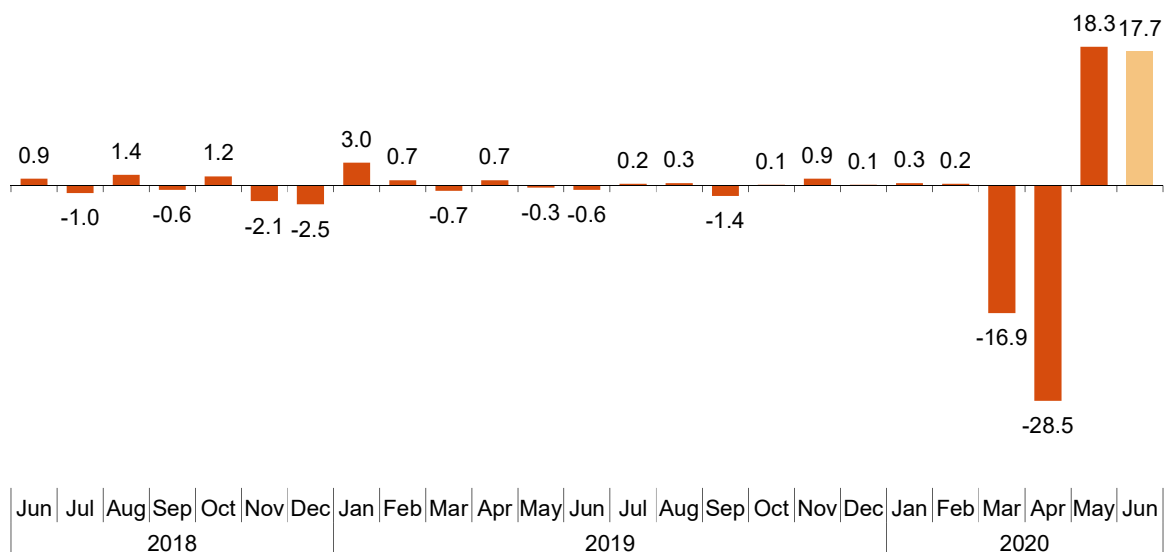
¹ As indicated in the methodology of this value index, the information is presented in current terms (nominal terms), this is, without adjusting the price variation effects.

Monthly trend of the Industrial Turnover

The monthly variation of the seasonally and calendar adjusted Total Industrial Turnover Index between the months of June and May, stood at 17.7%. This rate was six tenths lower than the previous month.

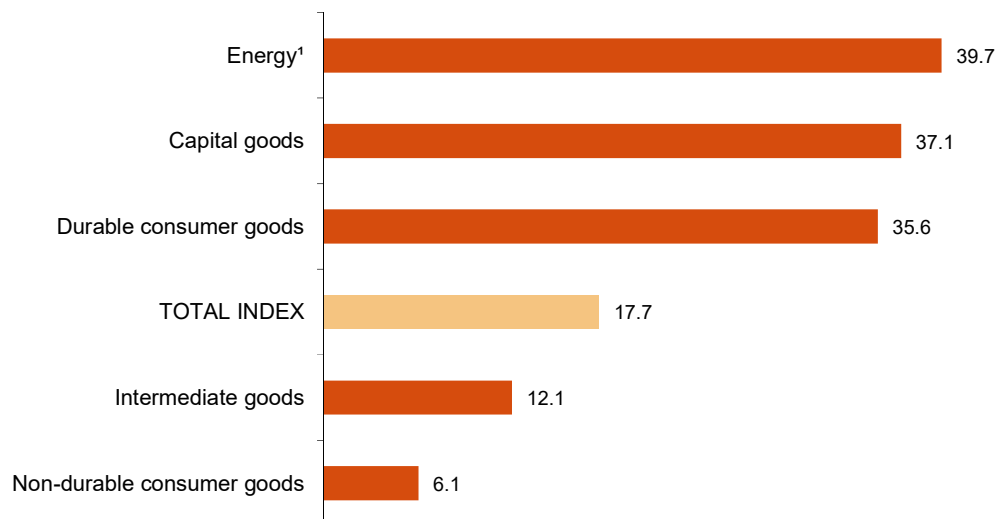
Industrial Turnover Index, Total. Seasonally and calendar adjusted

Monthly rate. Percentage



By Main Industrial Groupings (MIGs), all sectors showed positive monthly rates. It is worth highlighting the increase in *Energy*³ (39.7%), followed by *Capital goods* (37.1%).

Industrial Turnover Indices, Total and by MIGs. Seasonally and calendar adjusted. June 2020. Monthly rate. Percentage



¹ Except electricity, gas, steam, air conditioning and water supply.

A more detailed analysis showed the branches of activity with the highest and the lowest monthly rates in the month of June.

Branches of activity with the highest monthly rates of the Industrial Turnover Index. Seasonally and calendar adjusted

Branch of activity (Division of the CNAE 2009)	Monthly rate (%)
Manufacture of motor vehicles, trailers and semi-trailers	66.8
Manufacture of furniture	46.1
Manufacture of coke and refined petroleum products	39.6

Branches of activity with the lowest monthly rates of the Industrial Turnover Index. Seasonally and calendar adjusted

Branch of activity (Division of the CNAE 2009)	Monthly rate (%)
Leather and footwear industry	-5.4
Other mining and quarrying	0.5
Manufacture of pharmaceutical products	0.6

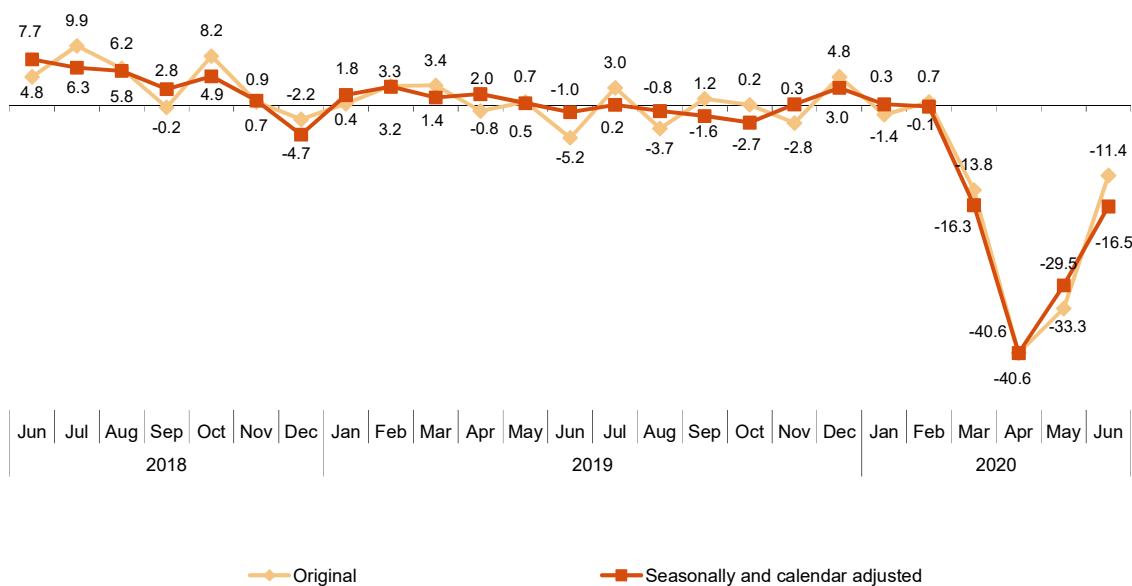
³ Except electricity, gas, steam, air conditioning and water supply.

Annual trend of the Industrial Turnover Indices

The Total Industrial Turnover Index, once adjusted for seasonal and calendar effects, showed a variation of -16.5% in June, as compared with the same month of the previous year. This rate was 13 points higher than the one registered in May.

The ITI original series registered an annual variation of -11.4%. This rate was almost 22 points higher than the one in May.

Industrial Turnover Index, Total. Seasonally and calendar adjusted Annual rates. Percentage



By MIGs, the seasonally and calendar adjusted indices registered negative annual rates in all the analysed sectors, highlighting the decrease in *Energy*² (-45.2%).

Industrial Turnover Index, Total and by MIGs. Annual rates

	Unadjusted index	Seasonally and calendar adjusted index
	Annual rate (%)	Annual rate (%)
TOTAL INDEX	-11.4	-16.5
1. Consumer goods	-4.4	-9.6
1.1. Durable consumer goods	0.7	-6.3
1.2. Non-durable consumer goods	-4.8	-9.9
2. Capital goods	-10.2	-15.8
3. Intermediate goods	-10.6	-16.3
4. Energy ¹	-44.4	-45.2

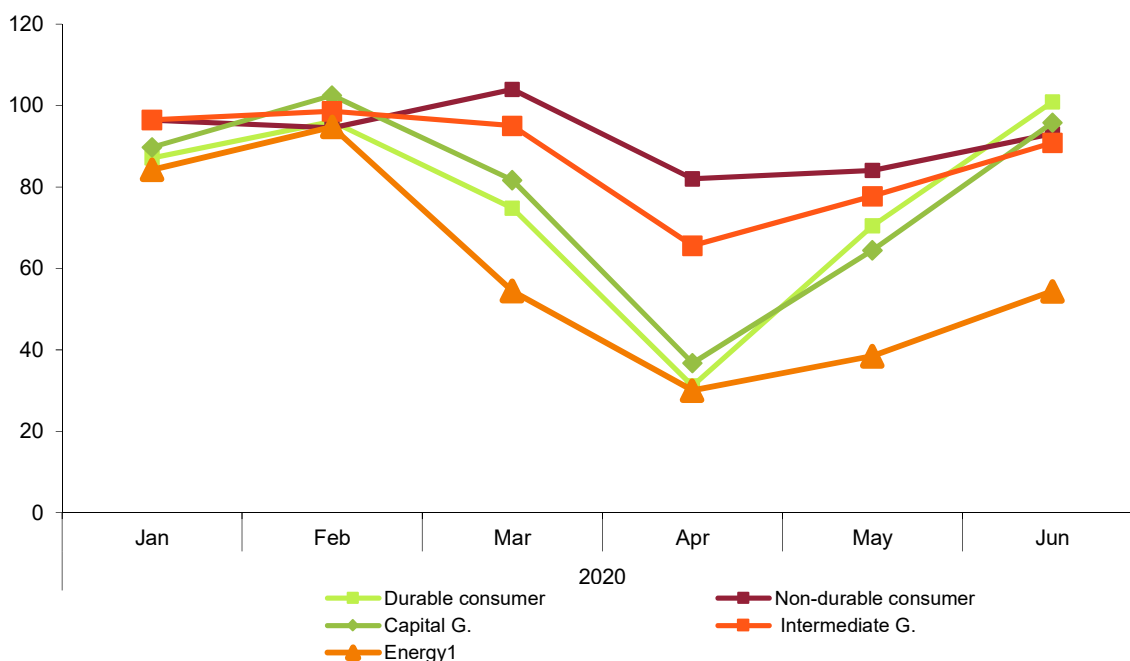
¹ Except electricity, gas, steam, air conditioning and water supply.

The sector whose behaviour remained the most stable during the crisis was *Non-durable consumer goods*, although it nonetheless registered a drop of 5.5% compared to the same period in 2019.

On the other hand, the production of *Durable consumer goods* and *Capital goods* suffered a sharp decline, with a peak in April and a V- shaped recovery in May and June that has not yet reached June 2019 levels.

Without considering electricity supply, in the first half of the year *Energy* registered a decrease of 38.9%, due in part to a drop in prices.

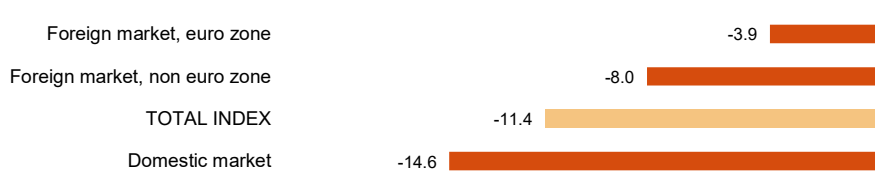
Industrial Turnover Indices by MIGs. Mean 2019=100. Original series



Annual trend of the Industrial Turnover Indices by market. Original series

In June all markets showed negative annual rates. It is worth noting the decrease registered in the domestic market (-14.6%)

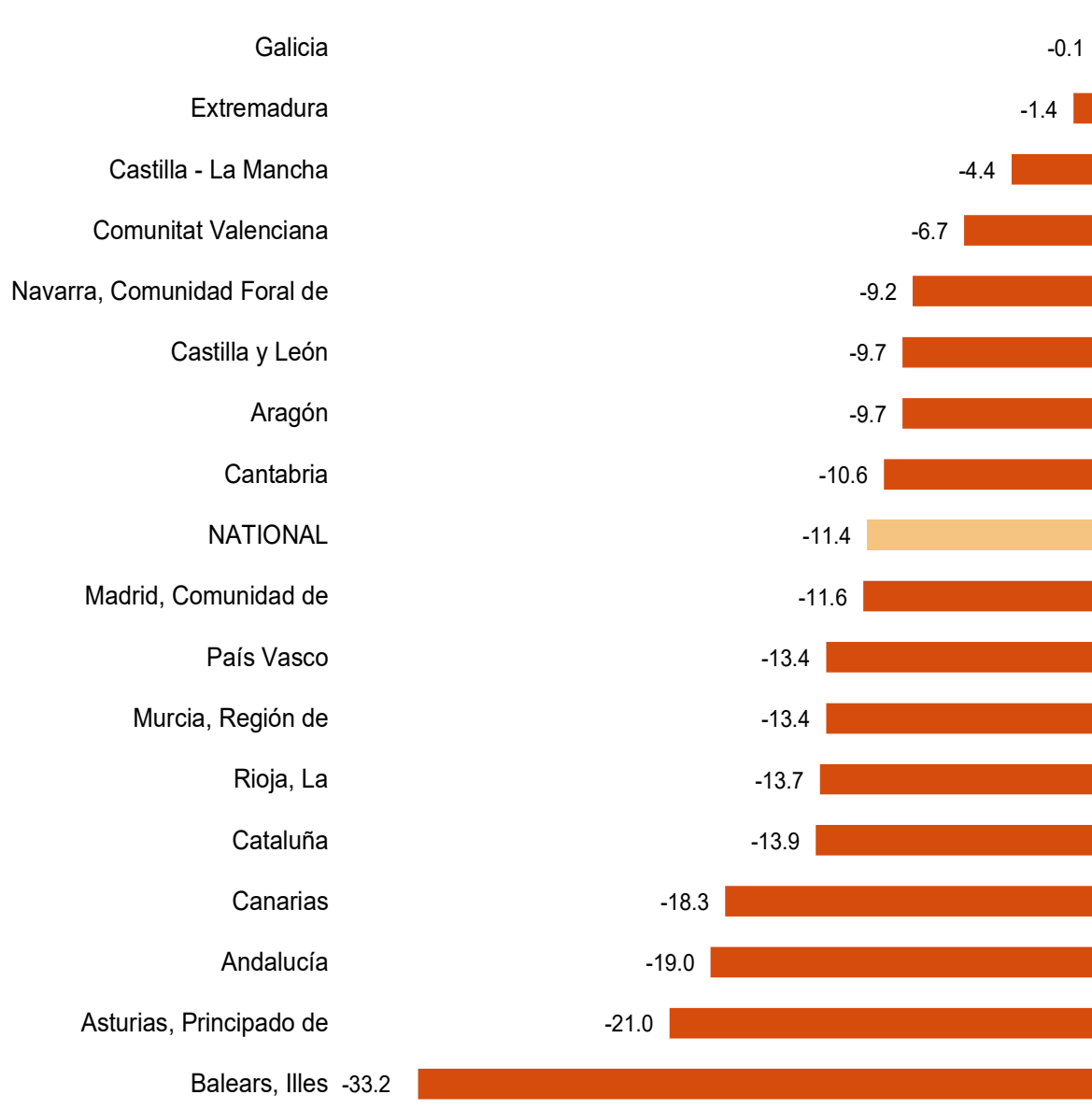
Industrial Turnover Index, Total and by market June 2020. Annual rate. Percentage



Results by Autonomous Community. Annual rates of the Industrial Turnover. Original series

Turnover decreased as compared to June 2019 in all the autonomous communities. The largest decreases were recorded in Illes Balears (-33.2%), Principado de Asturias (-21.0%) and Andalucía (-19.0%). The shortest decreases were recorded in Galicia (-0.1%), Extremadura (-1.4%) and Castilla-La Mancha (-4.4%).

Industrial Turnover Index, Total and by Autonomous Community June 2020. Annual rate. Percentage



Revisions and data update

On the press release day, INE has updated ITI data series corresponding to the last 13 months. In the case of calendar adjusted and seasonally and calendar adjusted series, according to INE standard, series are revised since its beginning. Results are available at INEBase.

Methodological note

Industrial Turnover Indices (ITI) are short-term indicators aiming at measuring the monthly evolution of the industrial sector, excluding the construction.

The required information is collected since January 2002, together with the Industrial New Orders Received Indices (INORI) through a survey addressed to more than 12.000 industrial establishments throughout the country.

Survey Type: ongoing monthly.

Base year: 2015.

Population scope: units of economic activity whose main activity is included in Sections B: Extractive industries (with the exception, due to their not being relevant to Spanish industry, of division 09) or C: Manufacturing industry of CNAE-2009.

Geographical scope: the whole country, excluding Ceuta and Melilla.

Sample size: Approx. 12,000 establishments.

Data collection: monthly, value of total business turnover broken down by market.

Collection method: fill in a questionnaire by the respondent using one of the following methods: internet (IRIA system), email, fax, telephone or post.

Further information is available in the methodology:

http://www.ine.es/dyngs/INEbase/en/operacion.htm?c=Estadistica_C&cid=1254736148782&menu=metodologia&idp=1254735576715

And in the standardised methodological report:

<http://www.ine.es/dynt3/metadatos/en/RespuestaDatos.html?oe=30052>

For further information see **INEbase:** www.ine.es/en/ Twitter: [@es_ine](https://twitter.com/es_ine)

All press releases at: www.ine.es/en/prensa/prensa_en.htm

Press office: Telephone numbers: (+34) 91 583 93 63 /94 08 – gprensa@ine.es

Information Area: Telephone number: (+34) 91 583 91 00 – www.ine.es/infoine/?L=1

Industrial Turnover Index. Base 2015

June 2020

Provisional data

1. Turnover indices¹

Seasonally and calendar adjusted

	Index	Rate (%)		
		Monthly	Annual	Year-to-date average
TOTAL INDEX	94.9	17.7	-16.5	-17.1
1. Consumer goods	100.6	7.9	-9.6	-6.5
1.1. Durable consumer goods	100.4	35.6	-6.3	-23.3
1.2. Non-durable consumer goods	100.4	6.1	-9.9	-5.5
2. Capital goods	96.5	37.1	-15.8	-23.0
3. Intermediate goods	95.6	12.1	-16.3	-16.5
4. Energy ²	65.3	39.7	-45.2	-38.9

¹Regulation (EC) no. 656/2007 of the Commission of 14 June 2007.

²Except electricity, gas, steam, air conditioning and water supply.

2. Turnover indices¹

Calendar adjusted

	Index	Rate (%)	
		Annual	Year-to-date average
TOTAL INDEX	101.2	-16.5	-17.5
1. Consumer goods	102.9	-10.0	-6.9
1.1. Durable consumer goods	105.4	-7.0	-23.4
1.2. Non-durable consumer goods	102.8	-10.1	-5.8
2. Capital goods	107.0	-15.8	-23.4
3. Intermediate goods	102.6	-16.3	-16.6
4. Energy ²	67.3	-45.2	-40.4

¹Regulation (EC) no. 656/2007 of the Commission of 14 June 2007.

²Except electricity, gas, steam, air conditioning and water supply.

3. Turnover indices, Total and by activities Unadjusted

	Index	Rate (%)		Effect
		Annual	Year-to-date average	Annual
TOTAL INDEX	102.0	-11.4	-17.0	
1. CONSUMER GOODS	103.8	-4.4	-6.3	-1.292
1.1. Durable consumer goods	106.8	0.7	-22.8	0.013
- Manufacture of consumer electronics, optical instruments and photographic equipment	95.9	-15.6	-20.1	-0.007
- Manufacture of household appliances	102.5	23.7	-13.7	0.096
- Manufacture of motorcycles, bicycles, vehicles for the disabled and others	199.6	61.2	7.7	0.044
- Manufacture of furniture	110.6	-7.3	-27.2	-0.078
- Manufacture of jewellery, costume jewellery and musical instruments	56.8	-37.7	-39.3	-0.043
1.2. Non-durable consumer goods	103.6	-4.8	-5.3	-1.305
- Food industries (except grain mill products and food for animals)	106.0	-2.0	-0.4	-0.315
- Manufacture of beverages	99.9	-14.0	-17.8	-0.487
- Manufacture of tobacco	56.2	9.0	-8.8	0.005
- Manufacture of knitted fabrics, carpets, rope, non-woven fabrics, textile products for technical use and industrial and other textile products	108.6	-2.5	-17.5	-0.016
- Manufacture of garments	68.1	-16.4	-30.5	-0.117
- Leather and footwear industry	62.3	-31.9	-29.4	-0.249
- Graphic arts and reproduction of recorded media	82.3	-14.1	-16.9	-0.143
- Manufacture of cleaning articles, perfumes and cosmetics	120.7	-4.3	-5.5	-0.071
- Manufacture of pharmaceutical products	121.1	3.5	5.7	0.101
- Manufacture of sporting goods; games and toys and Other manufacturing industries	105.0	-3.7	-20.3	-0.014
2. CAPITAL GOODS	108.1	-10.2	-22.6	-2.729
- Manufacture of metal products for construction, containers made of metal, steam generators, weapons and ammunition	94.7	-10.0	-17.3	-0.200
- Manufacture of computers, peripherals and telecommunications equipment; appliances for measuring and navigation; radiation and medical and therapeutic equipment	127.5	8.0	-3.4	0.045
- Manufacture of machinery and equipment n.e.c.	116.5	-2.4	-13.2	-0.097
- Manufacture of motor vehicles, trailers and semi-trailers	107.2	-11.3	-29.4	-1.686
- Naval, railway, aircraft and spacecraft construction. Combat vehicles	114.1	-16.5	-17.2	-0.507
- Manufacture of medical and dental instruments and supplies	116.5	-2.5	-11.4	-0.009
- Repair and installation of machinery and equipment	97.1	-14.4	-12.8	-0.275
3. INTERMEDIATE GOODS	103.6	-10.6	-16.4	-3.823
- Mining of metal ores
- Other mining and quarrying	102.6	-9.7	-16.6	.
- Manufacture of grain mill products, starches, and food for animals	112.2	5.7	3.0	0.153
- Preparation and spinning of textile fibres. Manufacture of woven textiles. Textile finishings	90.0	-6.9	-20.9	-0.028
- Wood and cork industry	112.5	-10.4	-15.9	-0.146
- Paper industry	97.3	-9.7	-11.1	-0.244
- Chemical industry except cleaning articles, perfumes and cosmetics	93.8	-12.1	-12.7	-0.753
- Rubber and plastic material transformation industry	104.8	-8.9	-17.7	-0.372
- Manufacture of other non-metallic ore products	124.0	-2.1	-16.3	-0.080
- Metallurgy; manufacture of iron, steel and ferro-alloy products	90.2	-19.3	-23.7	-1.151
- Forging, stamping, embossing and rolling of metals. - Manufacture of tools, hardware goods, containers and other metal products	102.2	-18.0	-24.2	-0.837
- Manufacture of electronic components, assembled printed circuits, and magnetic and optical media	133.3	-7.2	0.4	-0.020
- Manufacture of electrical material and equipment except household appliances	122.5	-9.9	-19.5	-0.316
4. ENERGY¹	67.5	-44.4	-40.4	-3.584
- Extraction of anthracite, coal and lignite
- Extraction of crude oil, petroleum and natural gas
- Manufacture of coke and refined petroleum products	67.9	-44.4	-40.4	-3.584

¹ Except electricity, gas, steam, air conditioning and water supply.

(.) Data not available due to statistical confidentiality.

4. Turnover indices, Total and by branch of activity Unadjusted

	Index	Rate (%)		Effect
		Annual	Year-to-date average	Annual
TOTAL INDEX	102.0	-11.4	-17.0	
B. Mining and quarrying industries	108.3	-4.5	-15.2	-0.031
Extraction of anthracite, coal and lignite
Extraction of crude oil, petroleum and natural gas
Mining of metal ores
Other mining and quarrying	102.6	-9.7	-16.6	.
C. Manufacturing industry	102.0	-11.5	-17.0	-11.401
Food industry	106.9	-0.9	0.1	-0.163
Manufacture of beverages	99.9	-14.0	-17.8	-0.487
Manufacture of tobacco	56.2	9.0	-8.8	0.005
Textile industry	100.7	-4.2	-18.9	-0.044
Manufacture of garments	68.1	-16.4	-30.5	-0.117
Leather and footwear industry	62.3	-31.9	-29.4	-0.249
Manufacture of wood and of products of wood and cork, except furniture; basketmaking and wickerwork	112.5	-10.4	-15.9	-0.146
Paper industry	97.3	-9.7	-11.1	-0.244
Graphic arts and reproduction of recorded media	82.3	-14.1	-16.9	-0.143
Manufacture of coke and refined petroleum products	67.9	-44.4	-40.4	-3.584
Chemical industry	98.7	-10.5	-11.2	-0.823
Manufacture of pharmaceutical products	121.1	3.5	5.7	0.101
Rubber and plastic material transformation industry	104.8	-8.9	-17.7	-0.372
Manufacture of other non-metallic ore products	124.0	-2.1	-16.3	-0.080
Metallurgy; manufacture of iron, steel and ferro-alloy products	90.2	-19.3	-23.7	-1.151
Manufacture of metal products, except machinery and equipment	99.7	-15.5	-22.1	-1.037
Manufacture of computer, electronic and optical products	127.4	2.0	-3.1	0.018
Manufacture of electrical material and equipment	119.0	-6.1	-18.8	-0.220
Manufacture of machinery and equipment n.e.c.	116.5	-2.4	-13.2	-0.097
Manufacture of motor vehicles, trailers and semi-trailers	107.2	-11.3	-29.4	-1.686
Manufacture of other transport material	116.2	-14.7	-16.5	-0.463
Manufacture of furniture	110.6	-7.3	-27.2	-0.078
Other manufacturing industries	101.9	-7.7	-18.9	-0.066
Repair and installation of machinery and equipment	97.1	-14.4	-12.8	-0.275

(.) Data not available due to statistical confidentiality.

5. Turnover indices, Total and by branch of activity Unadjusted

	Index	Rate (%)	
		Annual	Year-to-date average
GENERAL INDEX	102.0	-11.4	-17.0
1. Domestic market	97.4	-14.6	-17.9
2. Non domestic market	109.1	-5.8	-15.2
2.1. Non domestic market, euro area	112.9	-3.9	-16.9
2.2. Non domestic market, non euro area	104.4	-8.0	-12.6

**6. Turnover indices, National and by Autonomous Community
Unadjusted**

	Index	Rate (%)	
		Annual	Year-to-date average
NATIONAL	102.0	-11.4	-17.0
Andalucía	90.1	-19.0	-18.0
Aragón	108.5	-9.7	-17.4
Asturias, Principado de	93.3	-21.0	-22.2
Balears, Illes	81.8	-33.2	-27.0
Canarias	78.7	-18.3	-16.9
Cantabria	99.0	-10.6	-19.8
Castilla y León	92.7	-9.7	-14.6
Castilla - La Mancha	112.6	-4.4	-13.5
Cataluña	96.6	-13.9	-17.8
Comunitat Valenciana	111.8	-6.7	-14.3
Extremadura	115.8	-1.4	-2.6
Galicia	117.6	-0.1	-15.3
Madrid, Comunidad de	99.7	-11.6	-14.9
Murcia, Región de	114.1	-13.4	-17.3
Navarra, Comunidad Foral de	115.4	-9.2	-17.7
País Vasco	103.7	-13.4	-22.5
Rioja, La	82.2	-13.7	-14.1