

21 October 2020

Industrial Turnover Indices (ITI). Base 2015
August 2020. Provisional data

The monthly variation of the Total Industrial Turnover Index¹ stands at 1.6%, after seasonal and calendar adjustment

The annual rate stands at -10.0% in the seasonal and calendar adjusted series and at -9.9% in the original series

Main results

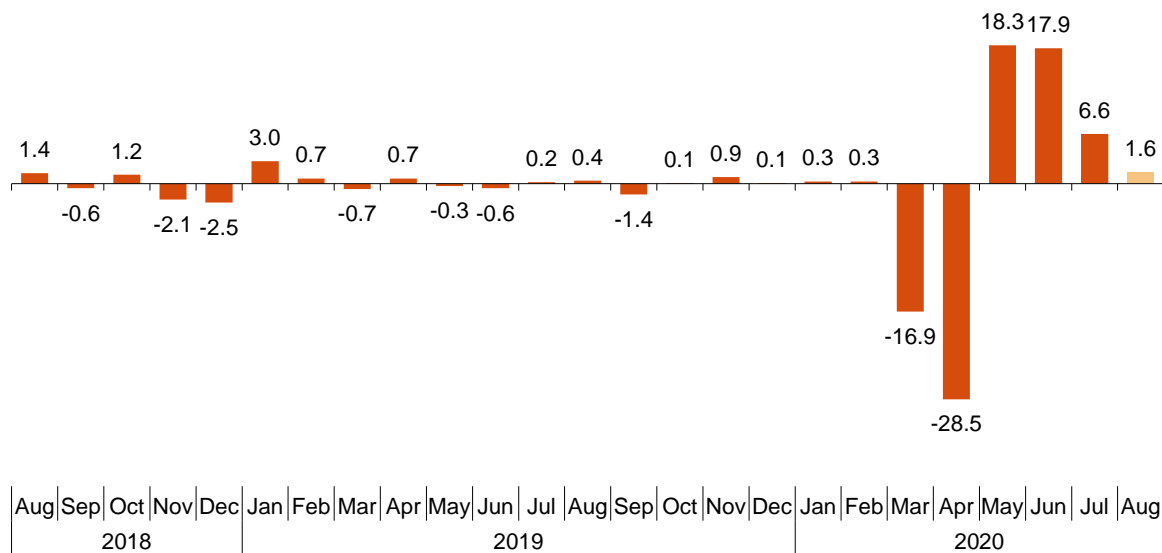
- Industry turnover registered a monthly increase of 1.6% in August. This increase is generalized across all sectors, except Non-durable consumer goods, which fell by 2.0%.
- The greatest dynamism compared to the previous month was seen in the *Manufacture of wearing apparel* (30.7%), the *Manufacture of other transport material* (27.7%) and the *Wood and cork industry, excluding furniture; basketry and plaiting* (13.6%).
- The annual Industry turnover rate continued to recover, although it fell 10.0% and remained below August 2019 levels.
- The decrease in production and the drop in prices in *Coke ovens and oil refining* caused this activity to register the most negative annual rate (-39.7%) followed by the *Manufacture of electronic components* (-22.2%).
- On the other hand, the *Manufacture of motorcycles, bicycles, vehicles for the disabled and other transport material* (34.0%), the *Preparation and spinning of textile fibres and the manufacture and finishing of textiles* (27.2%) and the *Manufacture of computers, peripheral and telecommunications equipment* (15.6%) were the branches where turnover increased the most compared to August 2019.
- Comunitat Valenciana (4.4%) and Galicia (0.9%) were the only autonomous communities where Industry turnover increased compared to August 2019. País Vasco (-23.1%) and Principado de Asturias (-21.2%) presented the largest decreases.

¹ As indicated in the methodology of this value index, the information is presented in current terms (nominal terms), this is, without adjusting the price variation effects.

Monthly trend of the Industrial Turnover

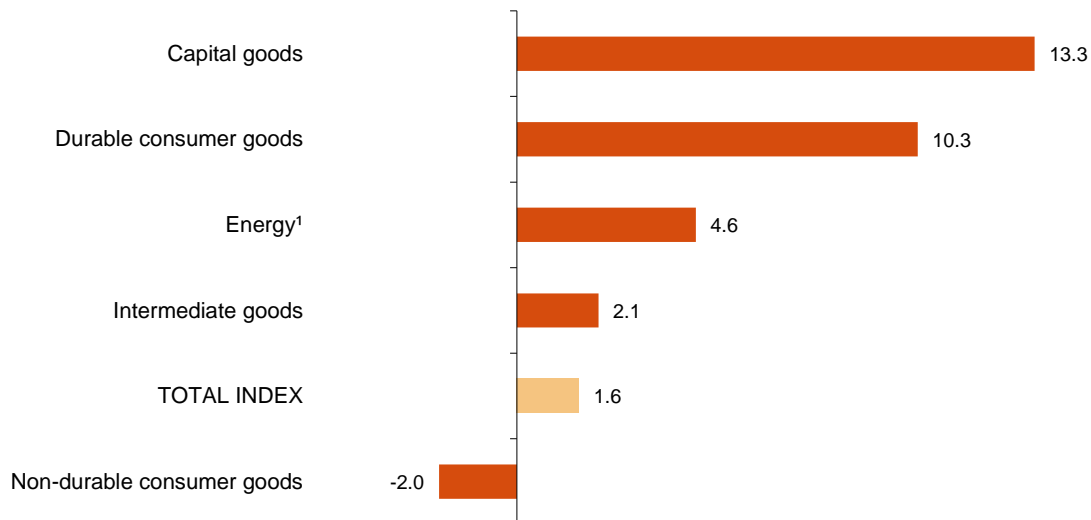
The monthly variation of the seasonally and calendar adjusted Total Industrial Turnover Index between the months of August and July, stood at 1.6%. This rate was five points lower than the previous month.

Industrial Turnover Index, Total. Seasonally and calendar adjusted
Monthly rate. Percentage



By Main Industrial Groupings (MIGs), four of the five sectors showed positive monthly rates. It is worth highlighting the increase in Capital goods (13.3%), followed by Durable consumer goods (10.3%). The only sector that decreased was Non-durable consumer goods (-2.0%).

Industrial Turnover Indices, Total and by MIGs. Seasonally and calendar adjusted. August 2020. Monthly rate. Percentage



¹ Except electricity, gas, steam, air conditioning and water supply.

A more detailed analysis showed the branches of activity with the highest and the lowest monthly rates in the month of August.

Branches of activity with the highest monthly rates of the Industrial Turnover Index. Seasonally and calendar adjusted

Branch of activity (Division of the CNAE 2009)	Monthly rate (%)
Manufacture of garments	30.7
Manufacture of other transport material	27.7
Manufacture of wood and of products of wood and cork, except furniture; basketmaking and wickerwork	13.6

Branches of activity with the lowest monthly rates of the Industrial Turnover Index. Seasonally and calendar adjusted

Branch of activity (Division of the CNAE 2009)	Monthly rate (%)
Graphic arts and reproduction of recorded media	-15.5
Manufacture of tobacco	-10.5
Manufacture of pharmaceutical products	-5.8

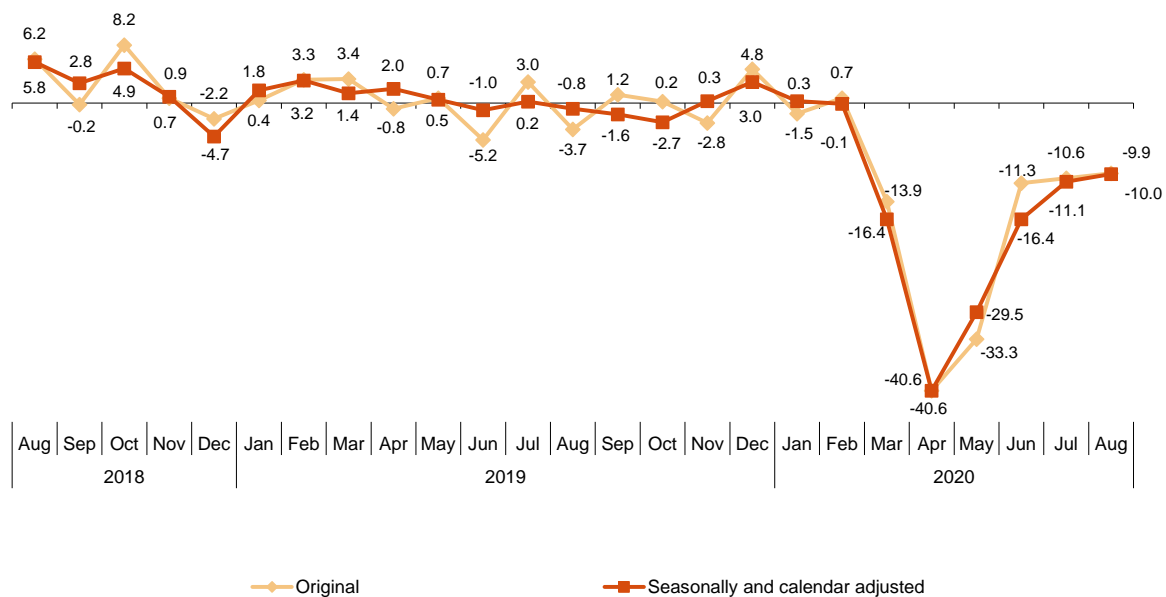
Annual trend of the Industrial Turnover Indices

The Total Industrial Turnover Index, once adjusted for seasonal and calendar effects, showed a variation of -10.0% in August, as compared with the same month of the previous year. This rate was 1.1 points higher than the one registered in July.

The ITI original series registered an annual variation of -9.9% . This rate was seven tenths higher than the one in July.

Industrial Turnover Index, Total. Seasonally and calendar adjusted

Annual rates. Percentage



By MIGs, the seasonally and calendar adjusted indices registered negative annual rates in four of five of the analysed sectors, highlighting the decrease in *Energy*² (-39.7%).

Industrial Turnover Index, Total and by MIGs. Annual rates

	Unadjusted index	Seasonally and calendar adjusted index
	Annual rate (%)	Annual rate (%)
TOTAL INDEX	-9.9	-10.0
1. Consumer goods	-7.4	-7.4
1.1. Durable consumer goods	10.3	10.4
1.2. Non-durable consumer goods	-8.2	-8.0
2. Capital goods	-1.7	-1.7
3. Intermediate goods	-8.2	-8.2
4. Energy ¹	-39.7	-39.7

¹ Except electricity, gas, steam, air conditioning and water supply.

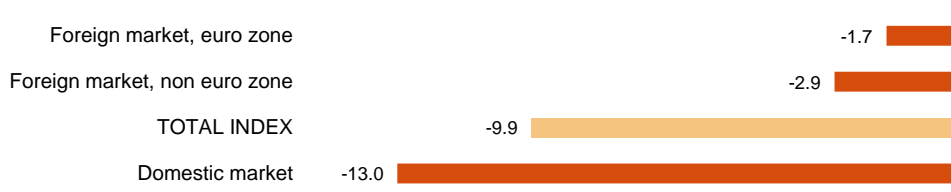
² Except electricity, gas, steam, air conditioning and water supply.

Annual trend of the Industrial Turnover Indices by market. Original series

In August all markets showed negative annual rates. It is worth noting the decrease registered in the domestic market (-13.0%)

Industrial Turnover Index, Total and by market

August 2020. Annual rate. Percentage

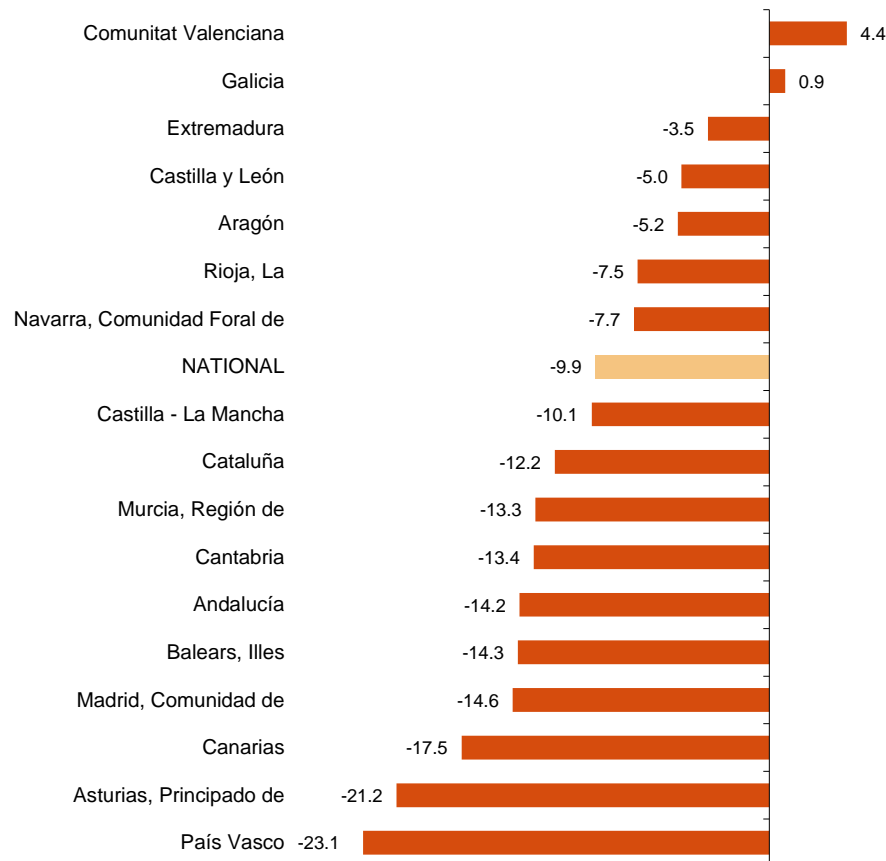


Results by Autonomous Community. Annual rates of the Industrial Turnover. Original series

Turnover increased as compared to August 2019 in two Autonomous Communities and decreased in the other 15. The largest decreases were recorded in País Vasco (-23.1%), Principado de Asturias (-21.2%) and Canarias (-17.5%). The largest increases were recorded in Comunitat Valenciana (4.4%) and Galicia (0.9%).

Industrial Turnover Index, Total and by Autonomous Community

August 2020. Annual rate. Percentage



Revisions and data update

On the press release day, INE has updated ITI data series corresponding to the last 13 months. In the case of calendar adjusted and seasonally and calendar adjusted series, according to INE standard, series are revised since its beginning. Results are available at INEBase.

Methodological note

Industrial Turnover Indices (ITI) are short-term indicators aiming at measuring the monthly evolution of the industrial sector, excluding the construction.

The required information is collected since January 2002, together with the Industrial New Orders Received Indices (INORI) through a survey addressed to more than 12.000 industrial establishments throughout the country.

Survey Type: ongoing monthly.

Base year: 2015.

Population scope: units of economic activity whose main activity is included in Sections B: Extractive industries (with the exception, due to their not being relevant to Spanish industry, of division 09) or C: Manufacturing industry of CNAE-2009.

Geographical scope: the whole country, excluding Ceuta and Melilla.

Sample size: Approx. 12,000 establishments.

Data collection: monthly, value of total business turnover broken down by market.

Collection method: fill in a questionnaire by the respondent using one of the following methods: internet (IRIA system), email, fax, telephone or post.

Further information is available in the methodology:

http://www.ine.es/dyngs/INEbase/en/operacion.htm?c=Estadistica_C&cid=1254736148782&menu=metodologia&idp=1254735576715

And in the standardised methodological report:

<http://www.ine.es/dynt3/metadatos/en/RespuestaDatos.html?oe=30052>

For further information see **INEbase:** www.ine.es/en/ Twitter: [@es_ine](https://twitter.com/es_ine)

All press releases at: www.ine.es/en/prensa/prensa_en.htm

Press office: Telephone numbers: (+34) 91 583 93 63 /94 08 – gprensa@ine.es

Information Area: Telephone number: (+34) 91 583 91 00 – www.ine.es/infoine/?L=1

Industrial Turnover Index. Base 2015
August 2020
 Provisional data

1. Turnover indices¹
Seasonally and calendar adjusted

	Index	Rate (%)		
		Monthly	Annual	Year-to-date average
TOTAL INDEX	102.9	1.6	-10.0	-15.5
1. Consumer goods	103.2	-1.9	-7.4	-6.4
1.1. Durable consumer goods	116.1	10.3	10.4	-16.2
1.2. Non-durable consumer goods	102.7	-2.0	-8.0	-5.9
2. Capital goods	118.3	13.3	-1.7	-18.6
3. Intermediate goods	104.8	2.1	-8.2	-14.6
4. Energy ²	70.9	4.6	-39.7	-39.7

¹Regulation (EC) no. 656/2007 of the Commission of 14 June 2007.

² Except electricity, gas, steam, air conditioning and water supply.

2. Turnover indices¹
Calendar adjusted

	Index	Rate (%)	
		Annual	Year-to-date average
TOTAL INDEX	81.3	-9.9	-15.9
1. Consumer goods	95.3	-7.4	-6.7
1.1. Durable consumer goods	80.6	10.3	-17.1
1.2. Non-durable consumer goods	96.2	-8.2	-6.1
2. Capital goods	67.3	-1.7	-19.9
3. Intermediate goods	81.1	-8.2	-14.9
4. Energy ²	72.8	-39.7	-40.8

¹Regulation (EC) no. 656/2007 of the Commission of 14 June 2007.

² Except electricity, gas, steam, air conditioning and water supply.

3. Turnover indices, Total and by activities Unadjusted

	Index	Rate (%)		Effect
		Annual	Year-to-date average	Annual
TOTAL INDEX	80.2	-9.9	-15.5	
1. CONSUMER GOODS	94.0	-7.4	-6.3	-2.621
1.1. Durable consumer goods	79.2	10.3	-16.5	0.153
- Manufacture of consumer electronics, optical instruments and photographic equipment	65.8	-6.1	-19.3	-0.002
- Manufacture of household appliances	72.0	12.8	-7.9	0.052
- Manufacture of motorcycles, bicycles, vehicles for the disabled and others	146.5	34.0	13.3	0.028
- Manufacture of furniture	85.2	10.2	-20.2	0.091
- Manufacture of jewellery, costume jewellery and musical instruments	37.3	-20.1	-35.2	-0.015
1.2. Non-durable consumer goods	95.0	-8.2	-5.6	-2.774
- Food industries (except grain mill products and food for animals)	100.6	-6.8	-1.7	-1.384
- Manufacture of beverages	108.1	-13.0	-15.5	-0.627
- Manufacture of tobacco	41.7	-20.3	-7.6	-0.014
- Manufacture of knitted fabrics, carpets, rope, non-woven fabrics, textile products for technical use and industrial and other textile products	74.2	4.8	-13.7	0.025
- Manufacture of garments	77.3	-15.7	-27.3	-0.163
- Leather and footwear industry	64.0	-19.9	-28.4	-0.175
- Graphic arts and reproduction of recorded media	62.1	-18.9	-15.7	-0.198
- Manufacture of cleaning articles, perfumes and cosmetics	107.9	-6.2	-5.5	-0.120
- Manufacture of pharmaceutical products	79.5	-4.8	4.1	-0.132
- Manufacture of sporting goods; games and toys and Other manufacturing industries	77.9	3.9	-15.0	0.013
2. CAPITAL GOODS	66.3	-1.7	-19.1	-0.322
- Manufacture of metal products for construction, containers made of metal, steam generators, weapons and ammunition	81.6	-5.8	-15.2	-0.124
- Manufacture of computers, peripherals and telecommunications equipment; appliances for measuring and navigation; radiation and medical and therapeutic equipment	97.9	15.6	-2.1	0.082
- Manufacture of machinery and equipment n.e.c.	73.3	-8.1	-12.3	-0.287
- Manufacture of motor vehicles, trailers and semi-trailers	59.7	3.7	-23.7	0.336
- Naval, railway, aircraft and spacecraft construction. Combat vehicles	56.0	2.7	-17.1	0.044
- Manufacture of medical and dental instruments and supplies	96.4	8.8	-7.3	0.031
- Repair and installation of machinery and equipment	82.3	-18.3	-14.7	-0.404
3. INTERMEDIATE GOODS	79.9	-8.2	-14.6	-2.852
- Mining of metal ores
- Other mining and quarrying	89.2	3.7	-13.4	.
- Manufacture of grain mill products, starches, and food for animals	105.1	-4.7	1.4	-0.168
- Preparation and spinning of textile fibres. Manufacture of woven textiles. Textile finishings	53.3	27.2	-15.9	0.062
- Wood and cork industry	77.9	2.7	-13.3	0.029
- Paper industry	82.2	-11.6	-11.4	-0.326
- Chemical industry except cleaning articles, perfumes and cosmetics	77.4	-10.2	-12.2	-0.661
- Rubber and plastic material transformation industry	77.6	-6.4	-14.7	-0.250
- Manufacture of other non-metallic ore products	101.5	0.6	-12.8	0.025
- Metallurgy; manufacture of iron, steel and ferro-alloy products	64.1	-16.4	-22.1	-0.871
- Forging, stamping, embossing and rolling of metals. - Manufacture of tools, hardware goods, containers and other metal products	68.3	-8.9	-21.8	-0.323
- Manufacture of electronic components, assembled printed circuits, and magnetic and optical media	86.0	-22.2	-3.4	-0.062
- Manufacture of electrical material and equipment except household appliances	86.1	-13.4	-16.7	-0.403
4. ENERGY¹	72.6	-39.7	-40.8	-4.125
- Extraction of anthracite, coal and lignite
- Extraction of crude oil, petroleum and natural gas
- Manufacture of coke and refined petroleum products	73.1	-39.7	-40.8	-4.119

¹ Except electricity, gas, steam, air conditioning and water supply.

(.) Data not available due to statistical confidentiality.

4. Turnover indices, Total and by branch of activity Unadjusted

	Index	Rate (%)		Effect Annual
		Annual	Year-to-date average	
TOTAL INDEX	80.2	-9.9	-15.5	
B. Mining and quarrying industries	100.0	13.0	-11.2	0.091
Extraction of anthracite, coal and lignite
Extraction of crude oil, petroleum and natural gas
Mining of metal ores
Other mining and quarrying	89.2	3.7	-13.4	.
C. Manufacturing industry	80.1	-10.1	-15.5	-10.014
Food industry	101.3	-6.5	-1.2	-1.552
Manufacture of beverages	108.1	-13.0	-15.5	-0.627
Manufacture of tobacco	41.7	-20.3	-7.6	-0.014
Textile industry	65.3	11.6	-14.6	0.087
Manufacture of garments	77.3	-15.7	-27.3	-0.163
Leather and footwear industry	64.0	-19.9	-28.4	-0.175
Manufacture of wood and of products of wood and cork, except furniture; basketmaking and wickerwork	77.9	2.7	-13.3	0.029
Paper industry	82.2	-11.6	-11.4	-0.326
Graphic arts and reproduction of recorded media	62.1	-18.9	-15.7	-0.198
Manufacture of coke and refined petroleum products	73.1	-39.7	-40.8	-4.119
Chemical industry	83.0	-9.3	-10.8	-0.781
Manufacture of pharmaceutical products	79.5	-4.8	4.1	-0.132
Rubber and plastic material transformation industry	77.6	-6.4	-14.7	-0.250
Manufacture of other non-metallic ore products	101.5	0.6	-12.8	0.025
Metallurgy; manufacture of iron, steel and ferro-alloy products	64.1	-16.4	-22.1	-0.871
Manufacture of metal products, except machinery and equipment	72.8	-7.8	-19.8	-0.448
Manufacture of computer, electronic and optical products	92.9	2.1	-3.4	0.017
Manufacture of electrical material and equipment	83.6	-10.3	-15.7	-0.352
Manufacture of machinery and equipment n.e.c.	73.3	-8.1	-12.3	-0.287
Manufacture of motor vehicles, trailers and semi-trailers	59.7	3.7	-23.7	0.336
Manufacture of other transport material	58.3	4.3	-16.2	0.071
Manufacture of furniture	85.2	10.2	-20.2	0.091
Other manufacturing industries	78.8	3.8	-14.3	0.029
Repair and installation of machinery and equipment	82.3	-18.3	-14.7	-0.404

(.) Data not available due to statistical confidentiality.

5. Turnover indices, Total and by branch of activity Unadjusted

	Index	Rate (%)	
		Annual	Year-to-date average
GENERAL INDEX	80.2	-9.9	-15.5
1. Domestic market	80.5	-13.0	-16.8
2. Non domestic market	79.7	-1.9	-12.6
2.1. Non domestic market, euro area	76.6	-1.7	-14.0
2.2. Non domestic market, non euro area	83.9	-2.9	-10.6

6. Turnover indices, National and by Autonomous Community Unadjusted

	Index	Rate (%)	
		Annual	Year-to-date average
NATIONAL	80.2	-9.9	-15.5
Andalucía	81.6	-14.2	-17.1
Aragón	79.1	-5.2	-14.4
Asturias, Principado de	76.0	-21.2	-22.4
Balears, Illes	75.1	-14.3	-25.4
Canarias	83.9	-17.5	-16.3
Cantabria	79.1	-13.4	-18.4
Castilla y León	78.0	-5.0	-12.5
Castilla - La Mancha	95.1	-10.1	-13.1
Cataluña	77.0	-12.2	-16.3
Comunitat Valenciana	88.5	4.4	-11.3
Extremadura	99.2	-3.5	-3.9
Galicia	100.4	0.9	-11.8
Madrid, Comunidad de	64.1	-14.6	-15.0
Murcia, Región de	106.4	-13.3	-16.8
Navarra, Comunidad Foral de	87.9	-7.7	-16.5
País Vasco	59.1	-23.1	-20.9
Rioja, La	74.0	-7.5	-12.6