

Industrial Turnover Indices (ITI). Base 2015
December 2020 and year 2020. Provisional data

The monthly variation of the Total Industrial Turnover Index¹ stands at -1.3%, after seasonal and calendar adjustment

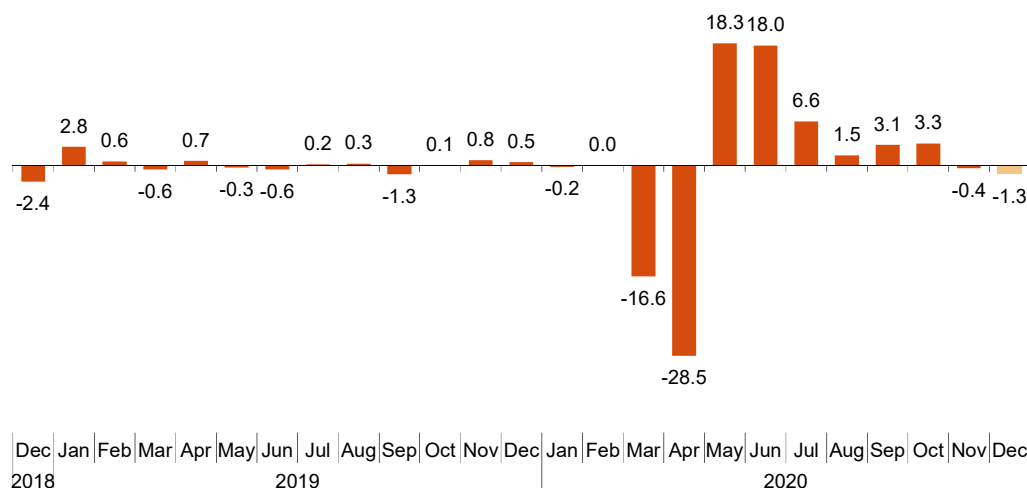
The annual rate stands at -5.8% in the seasonal and calendar adjusted series and at -2.6% in the original series

Throughout the year 2020, the business turnover decreases by 12.0% in the adjusted series and 11.7% in the original series

Monthly trend of the Industrial Turnover

The monthly variation of the seasonally and calendar adjusted Total Industrial Turnover Index between the months of December and November, stood at -1.3%. This rate was almost a point lower than the previous month.

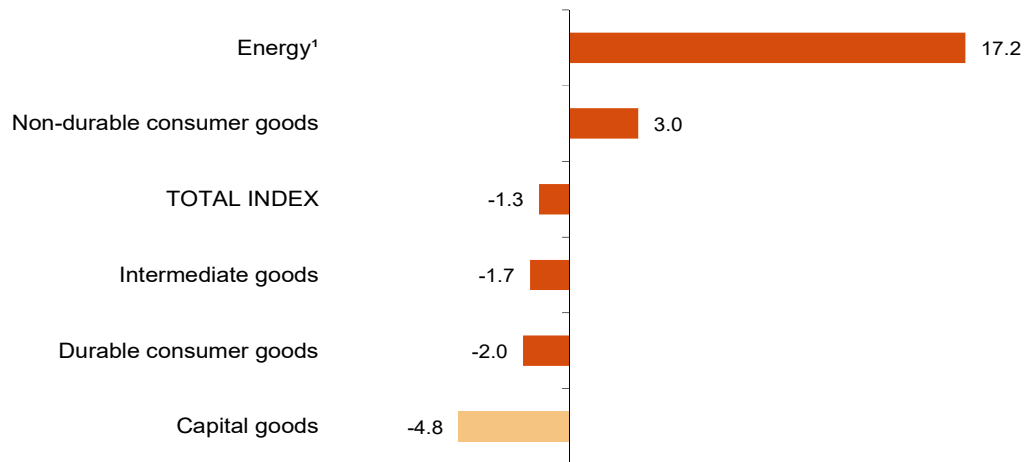
Industrial Turnover Index, Total. Seasonally and calendar adjusted
Monthly rate. Percentage



¹ As indicated in the methodology of this value index, the information is presented in current terms (nominal terms), this is, without adjusting the price variation effects.

By Main Industrial Groupings (MIGs), *Energy*² (17.2%) and *Non-durable consumer goods* (3.0%) showed positive monthly rates. On the other hand *Capital goods* (-4.8%) registered the greatest decrease.

Industrial Turnover Indices, Total and by MIGs. Seasonally and calendar adjusted. December 2020. Monthly rate. Percentage



¹ Except electricity, gas, steam, air conditioning and water supply.

A more detailed analysis showed the branches of activity with the highest and the lowest monthly rates in the month of December.

Branches of activity with the highest monthly rates of the Industrial Turnover Index. Seasonally and calendar adjusted

Branch of activity (Division of the CNAE 2009)	Monthly rate (%)
Manufacture of coke and refined petroleum products	17.0
Manufacture of pharmaceutical products	8.4
Other manufacturing industries	4.2

Branches of activity with the lowest monthly rates of the Industrial Turnover Index. Seasonally and calendar adjusted

Branch of activity (Division of the CNAE 2009)	Monthly rate (%)
Manufacture of other transport material	-21,5
Manufacture of electrical material and equipment	-10,4
Manufacture of beverages	-9,0

² Except electricity, gas, steam, air conditioning and water supply.

Annual trend of the Industrial Turnover Indices

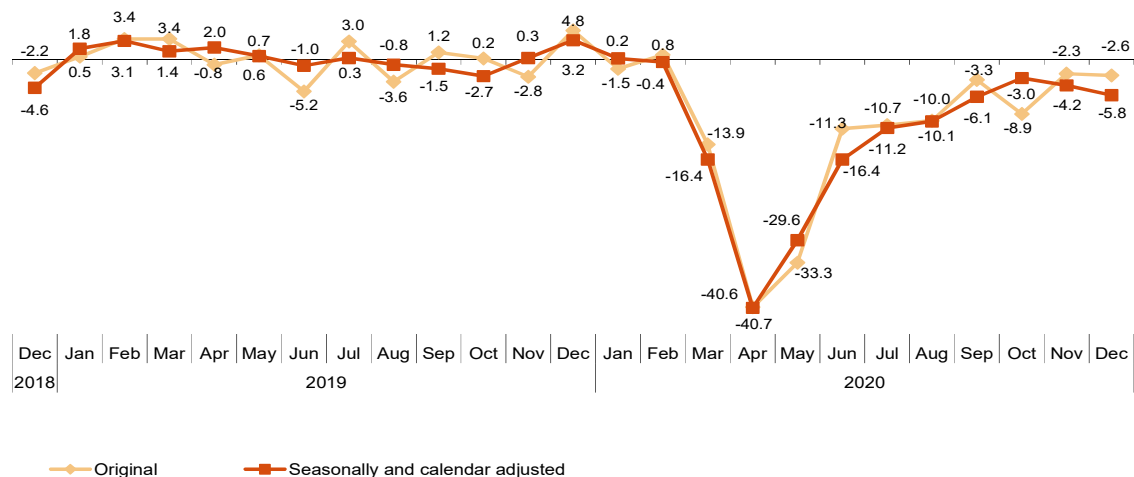
The Total Industrial Turnover Index, once adjusted for seasonal and calendar effects, showed a variation of -5.8% in December, as compared with the same month of the previous year. This rate was 1.6 points lower than the one registered in November.

The ITI original series registered an annual variation of -2.6% . This rate was three tenths lower than the one in November.

Throughout the year 2020, the Industrial Turnover Index, once adjusted for seasonal and calendar effects, decreased by 12.0% as compared with 2019, and by 11.7% in the original series.

Industrial Turnover Index, Total. Seasonally and calendar adjusted

Annual rates. Percentage



By MIGs, the seasonally and calendar adjusted indices registered negative annual rates in all the analysed sectors, highlighting the decrease in *Energy*² (-37.9%).

Industrial Turnover Index, Total and by MIGs.

	Unadjusted index		Seasonally and calendar adjusted index	
	Annual rate (%)	Annual rate (%)	Annual rate (%)	Average year 2020
GENERAL INDEX		-2.6	-5.8	-12.0
1. Consumer goods		-1.1	-5.2	-5.8
1.1. Durable consumer goods		-0.8	-4.6	-10.4
1.2. Non-durable consumer goods		-1.2	-5.2	-5.7
2. Capital goods		0.9	-2.8	-11.6
3. Intermediate goods		2.9	-1.2	-10.4
4. Energy ¹		-37.4	-37.9	-40.9

¹Except electricity, gas, steam, air conditioning and water supply.

Annual evolution of the Industrial Turnover Indices by economic destination of the goods

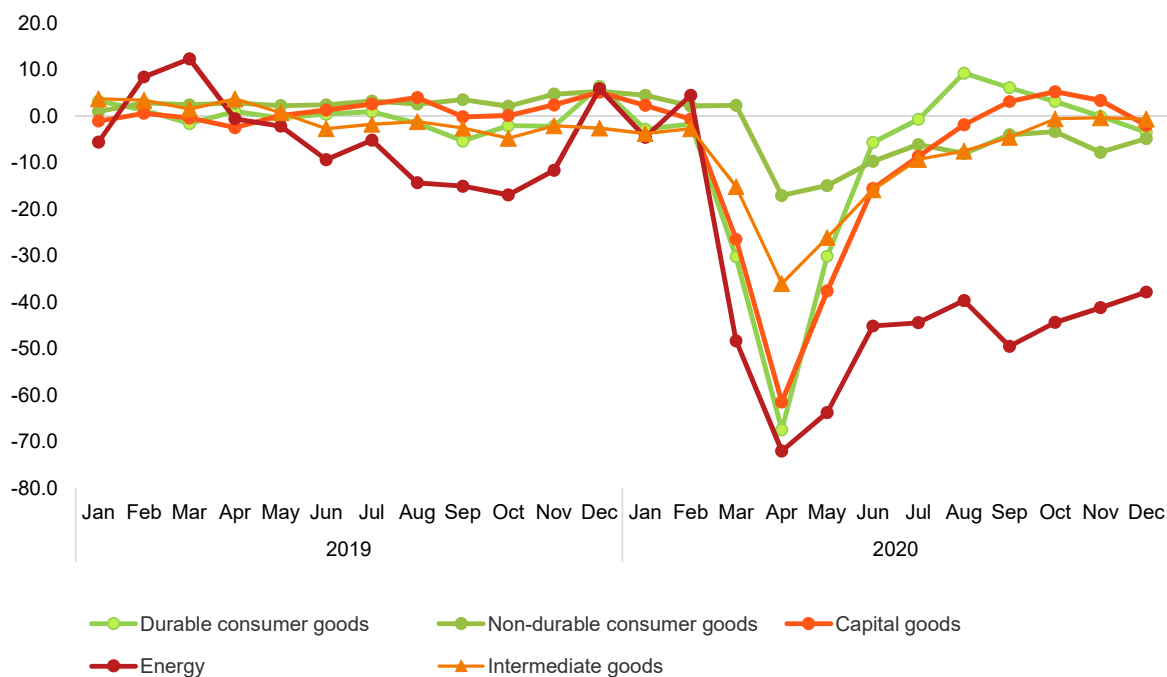
The unusual situation experienced in 2020 due to the COVID-19 health crisis meant that evolution of the different economic destinations that are part of this indicator was different, and distinct in the different periods of the year.

During the months in which the productive fabric was almost entirely paralysed, there was a significant decrease in the turnover, with *Non-durable consumer goods* being the least affected. *Energy*² showed the greatest decrease in those months.

With de-escalation and the arrival of the “new normality,” a generalised recovery took. This recovery was not the same for all sectors, however. Thus, while *Energy*² and *Non-durable consumer goods* maintained a turnover lower than that of the previous year, during certain months in the second semester, the figures for *Durable consumer goods* and *Capital goods* increased above the levels reached in 2019.

In the year 2020 as a whole, *Energy*² (-40.9%) decreased the most, while *Non-durable consumer goods* (-5.7%) showed the lowest decreases.

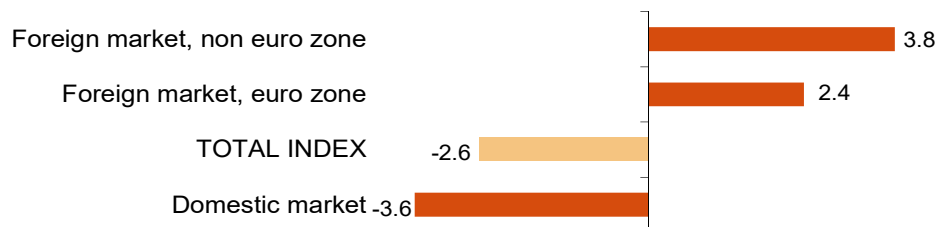
Annual rates by economic destination of the goods Base 2015=100. Adjusted for seasonal and calendar effects



Annual trend of the Industrial Turnover Indices by market. Original series

In December positive annual rates were observed in two of the analysed markets. It is worth noting the decrease registered in the domestic market (-3.6%).

Industrial Turnover Index, Total and by market December 2020. Annual rate. Percentage



Throughout the year 2020, all markets showed negative annual rates as compared with 2019. decrease registered -13.4(%)

Industrial Turnover Index, Total and by market. Original series. December 2020

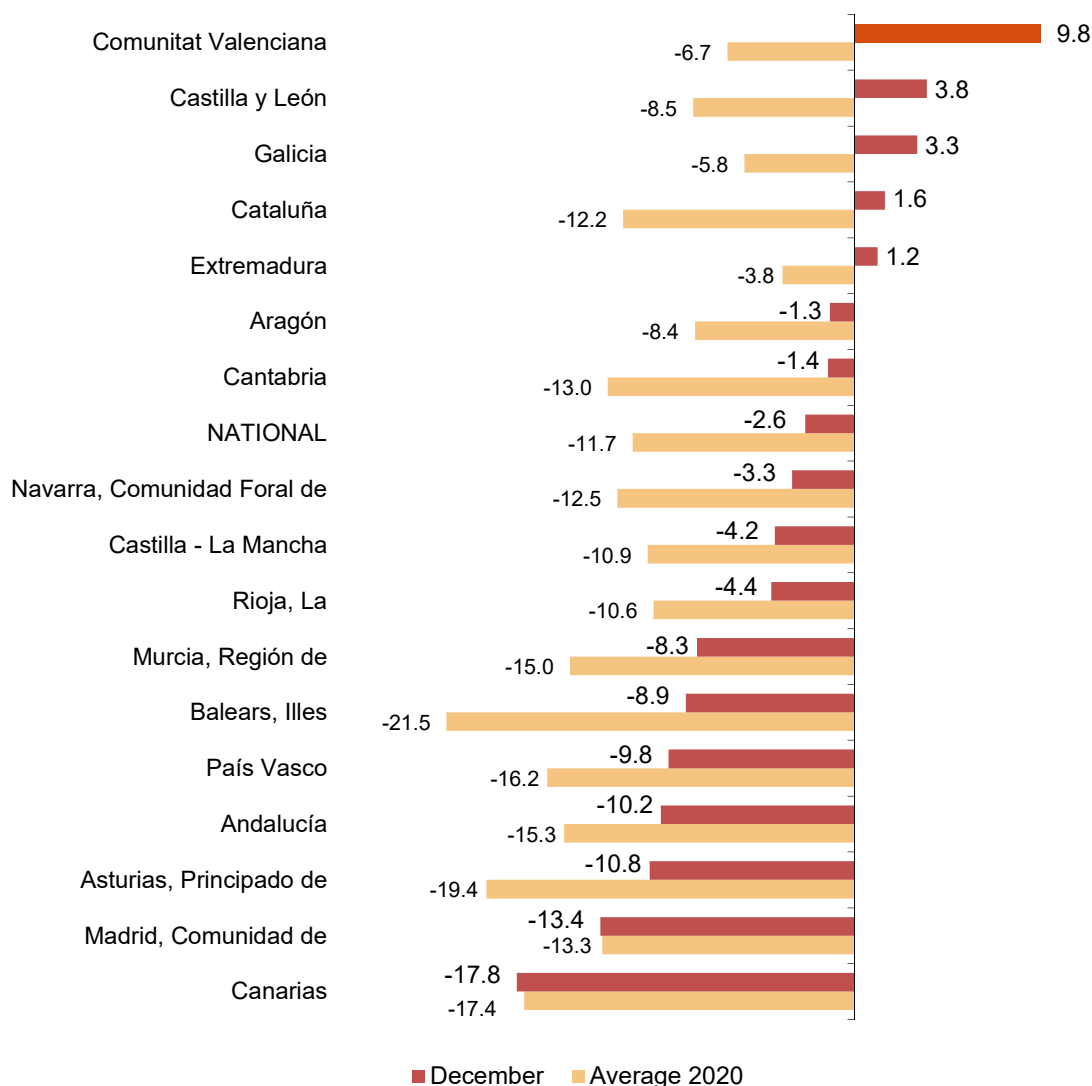
	Tasa (%)	
	Anual	Media año 2020
ÍNDICE GENERAL	-2.6	-11.7
1. Mercado interior	-3.6	-13.4
2. Mercado exterior	2.4	-7.8
2.1. Mercado exterior, zona euro	2.4	-8.7
2.2. Mercado exterior, zona no euro	3.8	-6.3

Results by Autonomous Community. Annual rates of the Industrial Turnover. Original series

Turnover increased as compared to December 2019 in five Autonomous Communities and decreased in the other 12. The largest decreases were recorded in Canarias (-17.8%), Comunidad de Madrid (-13.4%) and Principado de Asturias (-10.8%). The largest increases were recorded in Comunitat Valenciana (9.8%), Castilla y León (3.8%) and Galicia (3.3%).

Throughout the year 2020, the turnover decreased in all the autonomous communities. The largest decreases were recorded in Illes Balears (-21.5%), Principado de Asturias (-19.4%) and Canarias (-17.4%).

Industrial Turnover Index, Total and by Autonomous Community December 2020. Annual rate and annual average. Percentage



Revisions and data update

On the press release day, INE has updated ITI data series corresponding to the last 13 months. In the case of calendar adjusted and seasonally and calendar adjusted series, according to INE standard, series are revised since its beginning. Results are available at INEBase.

Methodological note

Industrial Turnover Indices (ITI) are short-term indicators aiming at measuring the monthly evolution of the industrial sector, excluding the construction.

The required information is collected since January 2002, together with the Industrial New Orders Received Indices (INORI) through a survey addressed to more than 12.000 industrial establishments throughout the country.

Survey Type: ongoing monthly.

Base year: 2015.

Population scope: units of economic activity whose main activity is included in Sections B: Extractive industries (with the exception, due to their not being relevant to Spanish industry, of division 09) or C: Manufacturing industry of CNAE-2009.

Geographical scope: the whole country, excluding Ceuta and Melilla.

Sample size: Approx. 12,000 establishments.

Data collection: monthly, value of total business turnover broken down by market.

Collection method: fill in a questionnaire by the respondent using one of the following methods: internet (IRIA system), email, fax, telephone or post.

Further information is available in the methodology:

http://www.ine.es/dyngs/INEbase/en/operacion.htm?c=Estadistica_C&cid=1254736148782&menu=metodologia&idp=1254735576715

And in the standardised methodological report:

<http://www.ine.es/dynt3/metadatos/en/RespuestaDatos.html?oe=30052>

INE's statistics are produced according to the European Statistics Code of Practice, that underlies the policy and strategy of the institution quality. For further information, take a look at the section [Quality at INE and Code of Practice](#) at INE Website.

For further information see **INEbase:** www.ine.es/en/ Twitter: [@es_ine](https://twitter.com/es_ine)

All press releases at: www.ine.es/en/prensa/prensa_en.htm

Press office: Telephone numbers: (+34) 91 583 93 63 /94 08 – gprensa@ine.es

Information Area: Telephone number: (+34) 91 583 91 00 – www.ine.es/infoine/?L=1

Industrial Turnover Index. Base 2015

December 2020

Provisional data

1. Turnover indices¹

Seasonally and calendar adjusted

	Index	Rate (%)		
		Monthly	Annual	Average year 2020
TOTAL INDEX	107.7	-1.3	-5.8	-12.0
1. Consumer goods	106.3	0.2	-5.2	-5.8
1.1. Durable consumer goods	103.3	-2.0	-4.6	-10.4
1.2. Non-durable consumer goods	107.7	3.0	-5.2	-5.7
2. Capital goods	111.7	-4.8	-2.8	-11.6
3. Intermediate goods	109.6	-1.7	-1.2	-10.4
4. Energy ²	81.4	17.2	-37.9	-40.9

¹Regulation (EC) no. 656/2007 of the Commission of 14 June 2007.

²Except electricity, gas, steam, air conditioning and water supply.

2. Turnover indices¹

Calendar adjusted

	Index	Rate (%)	
		Annual	Average year 2020
TOTAL INDEX	102.0	-6.1	-12.2
1. Consumer goods	105.3	-4.8	-6.0
1.1. Durable consumer goods	98.0	-5.0	-10.6
1.2. Non-durable consumer goods	105.8	-4.7	-5.8
2. Capital goods	114.0	-2.9	-12.0
3. Intermediate goods	95.2	-1.2	-10.7
4. Energy ²	80.2	-37.9	-41.7

¹Regulation (EC) no. 656/2007 of the Commission of 14 June 2007.

²Except electricity, gas, steam, air conditioning and water supply.

3. Turnover indices, Total and by activities Unadjusted

	Index	Rate (%)		Effect
		Annual	Average year 2020	Annual
TOTAL INDEX	104.8	-2.6	-11.7	
1. CONSUMER GOODS	108.2	-1.1	-5.5	-0.355
1.1. Durable consumer goods	101.0	-0.8	-10.0	-0.014
- Manufacture of consumer electronics, optical instruments and photographic equipment	108.8	-21.0	-19.8	-0.012
- Manufacture of household appliances	87.8	10.6	0.9	0.044
- Manufacture of motorcycles, bicycles, vehicles for the disabled and others	166.9	20.0	16.2	0.017
- Manufacture of furniture	105.7	-4.3	-13.8	-0.045
- Manufacture of jewellery, costume jewellery and musical instruments	86.2	-13.4	-30.9	-0.018
1.2. Non-durable consumer goods	108.6	-1.2	-5.3	-0.342
- Food industries (except grain mill products and food for animals)	116.6	1.8	-2.2	0.327
- Manufacture of beverages	91.8	-21.0	-15.8	-0.784
- Manufacture of tobacco	55.3	-22.4	-9.8	-0.018
- Manufacture of knitted fabrics, carpets, rope, non-woven fabrics, textile products for technical use and industrial and other textile products	96.5	12.9	-7.7	0.068
- Manufacture of garments	85.0	-13.4	-21.6	-0.123
- Leather and footwear industry	59.8	-23.6	-27.1	-0.168
- Graphic arts and reproduction of recorded media	87.7	-0.5	-12.9	-0.005
- Manufacture of cleaning articles, perfumes and cosmetics	119.4	-0.4	-3.6	-0.007
- Manufacture of pharmaceutical products	117.4	12.6	4.1	0.353
- Manufacture of sporting goods; games and toys and Other manufacturing industries	94.1	4.9	-11.0	0.016
2. CAPITAL GOODS	117.0	0.9	-11.3	0.254
- Manufacture of metal products for construction, containers made of metal, steam generators, weapons and ammunition	114.2	-1.6	-11.8	-0.037
- Manufacture of computers, peripherals and telecommunications equipment; appliances for measuring and navigation; radiation and medical and therapeutic equipment	168.0	8.1	1.9	0.065
- Manufacture of machinery and equipment n.e.c.	126.0	-2.9	-11.9	-0.136
- Manufacture of motor vehicles, trailers and semi-trailers	101.5	10.6	-11.3	1.276
- Naval, railway, aircraft and spacecraft construction. Combat vehicles	164.0	-10.4	-10.7	-0.457
- Manufacture of medical and dental instruments and supplies	136.0	23.0	-2.3	0.084
- Repair and installation of machinery and equipment	134.0	-18.2	-15.7	-0.540
3. INTERMEDIATE GOODS	98.1	2.9	-10.3	0.906
- Mining of metal ores
- Other mining and quarrying	87.1	2.5	-11.6	.
- Manufacture of grain mill products, starches, and food for animals	122.7	5.6	1.8	0.176
- Preparation and spinning of textile fibres. Manufacture of woven textiles. Textile finishings	83.0	12.1	-9.7	0.040
- Wood and cork industry	116.6	7.1	-8.5	0.092
- Paper industry	98.4	5.1	-8.9	0.120
- Chemical industry except cleaning articles, perfumes and cosmetics	92.9	4.2	-9.3	0.236
- Rubber and plastic material transformation industry	94.0	7.8	-8.8	0.264
- Manufacture of other non-metallic ore products	104.7	5.0	-8.1	0.160
- Metallurgy; manufacture of iron, steel and ferro-alloy products	83.8	-3.3	-16.6	-0.163
- Forging, stamping, embossing and rolling of metals. - Manufacture of tools, hardware goods, containers and other metal products	93.0	-1.2	-15.2	-0.044
- Manufacture of electronic components, assembled printed circuits, and magnetic and optical media	116.1	-2.5	-3.1	-0.006
- Manufacture of electrical material and equipment except household appliances	112.1	-0.9	-11.9	-0.026
4. ENERGY¹	80.7	-37.4	-41.6	-3.434
- Extraction of anthracite, coal and lignite
- Extraction of crude oil, petroleum and natural gas
- Manufacture of coke and refined petroleum products	81.2	-37.3	-41.6	-3.428

¹ Except electricity, gas, steam, air conditioning and water supply.

(.) Data not available due to statistical confidentiality.

4. Turnover indices, Total and by branch of activity Unadjusted

	Index	Rate (%)		Effect Annual
		Annual	Average year 2020	
TOTAL INDEX	104.8	-2.6	-11.7	
B. Mining and quarrying industries	104.0	8.1	-9.0	0.050
Extraction of anthracite, coal and lignite
Extraction of crude oil, petroleum and natural gas
Mining of metal ores
Other mining and quarrying	87.1	2.5	-11.6	.
C. Manufacturing industry	104.8	-2.7	-11.8	-2.680
Food industry	117.5	2.4	-1.6	0.503
Manufacture of beverages	91.8	-21.0	-15.8	-0.784
Manufacture of tobacco	55.3	-22.4	-9.8	-0.018
Textile industry	90.8	12.6	-8.5	0.108
Manufacture of garments	85.0	-13.4	-21.6	-0.123
Leather and footwear industry	59.8	-23.6	-27.1	-0.168
Manufacture of wood and of products of wood and cork, except furniture; ba	116.6	7.1	-8.5	0.092
Paper industry	98.4	5.1	-8.9	0.120
Graphic arts and reproduction of recorded media	87.7	-0.5	-12.9	-0.005
Manufacture of coke and refined petroleum products	81.2	-37.3	-41.6	-3.428
Chemical industry	97.8	3.2	-8.1	0.229
Manufacture of pharmaceutical products	117.4	12.6	4.1	0.353
Rubber and plastic material transformation industry	94.0	7.8	-8.8	0.264
Manufacture of other non-metallic ore products	104.7	5.0	-8.1	0.160
Metallurgy; manufacture of iron, steel and ferro-alloy products	83.8	-3.3	-16.6	-0.163
Manufacture of metal products, except machinery and equipment	100.2	-1.3	-14.1	-0.081
Manufacture of computer, electronic and optical products	150.5	4.2	-0.6	0.046
Manufacture of electrical material and equipment	107.9	0.5	-10.4	0.018
Manufacture of machinery and equipment n.e.c.	126.0	-2.9	-11.9	-0.136
Manufacture of motor vehicles, trailers and semi-trailers	101.5	10.6	-11.3	1.276
Manufacture of other transport material	164.1	-9.8	-10.0	-0.440
Manufacture of furniture	105.7	-4.3	-13.8	-0.045
Other manufacturing industries	109.5	10.0	-9.9	0.082
Repair and installation of machinery and equipment	134.0	-18.2	-15.7	-0.540

(.) Data not available due to statistical confidentiality.

5. Turnover indices, Total and by branch of activity Unadjusted

	Index	Rate (%)	
		Annual	Average year 2020
GENERAL INDEX	104.8	-2.6	-11.7
1. Domestic market	104.1	-3.6	-13.4
2. Non domestic market	106.3	2.4	-7.8
2.1. Non domestic market, euro area	102.7	2.4	-8.7
2.2. Non domestic market, non euro area	112.3	3.8	-6.3

**6. Turnover indices, National and by Autonomous Community
Unadjusted**

	Index	Rate (%)	
		Annual	Average year 2020
NATIONAL	104.8	-2.6	-11.7
Andalucía	96.7	-10.2	-15.3
Aragón	108.8	-1.3	-8.4
Asturias, Principado de	90.8	-10.8	-19.4
Balears, Illes	86.1	-8.9	-21.5
Canarias	90.4	-17.8	-17.4
Cantabria	98.6	-1.4	-13.0
Castilla y León	96.5	3.8	-8.5
Castilla - La Mancha	118.0	-4.2	-10.9
Cataluña	103.5	1.6	-12.2
Comunitat Valenciana	108.5	9.8	-6.7
Extremadura	115.0	1.2	-3.8
Galicia	120.4	3.3	-5.8
Madrid, Comunidad de	103.7	-13.4	-13.3
Murcia, Región de	128.7	-8.3	-15.0
Navarra, Comunidad Foral de	105.3	-3.3	-12.5
País Vasco	96.9	-9.8	-16.2
Rioja, La	92.0	-4.4	-10.6