

19 December 2012

**Industrial Turnover Indices (ITI). Base 2005  
Industrial New Orders Received Indices (INORI). Base 2005  
October 2012. Provisional data**

**The annual rate of the Industrial Turnover Index in the Industry stands at 5.2% in October, as compared with –8.5% in September**

**The annual variation rate of New Orders Received is 5.5%, as compared with –6.2% in September**

**Evolution of Industrial Turnover**

The Industrial Turnover Index (ITI) experienced an annual variation of 5.2% in October, more than thirteen-and-a-half points above that registered in September.

By economic destination of the goods, the industrial sectors that presented a greater positive effect on the general index were:

- **Energy**, with an annual variation of 34.9% and an effect of 3.569 due to the increase registered in *Manufacture of coke and refined petroleum products*.
- **Non-durable consumer goods**, with an annual rate of 6.3% and an effect of 1.827. Practically all activities of this sector presented a positive annual evolution in their turnover. Among them, highlighting, by its effect, *Manufacture of other food products (except grain mill products and food for animals.)*
- **Intermediate goods**, with an annual rate of 1.5% and an effect of 0.540 on the general index. The half activities registered increases in their caused by the decreases registered in their turnover. Among them, highlighting, by their influence, were *Chemical industry except cleaning articles, perfumes and cosmetics* and *Manufacture of grain mill products, starches and food for animals*.

In turn, the sector with the greatest negative effect was **Capital goods**, with an annual variation of –3.0% and an effect of –0.685, mainly, due to the drop of *Manufacture of motor vehicles, trailers and semi-trailers*. Nevertheless, within this sector worth noting the increase in the turnover of *Naval, railway, aircraft and spacecraft construction. Combat vehicles*.

A more detailed analysis showed the activities that most affected the annual rate of the ITI in the month of October.

**Activities with the greatest positive effect on the annual rate of the ITI**

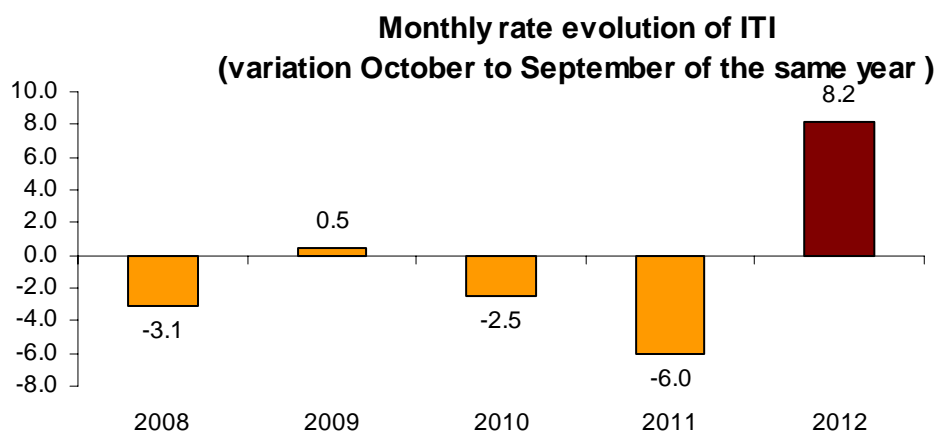
Activity (Basic aggregate of the ITI)	Annual rate (%)	Effect
Manufacture of coke and refined petroleum products	35.6	3.556
Food industries (except grain mill products and food for animals)	8.3	1.326
Chemical industry except cleaning articles, perfumes and cosmetics	10.0	0.569
Manufacture of grain mill products, starches, and food for animals	15.9	0.488

**Activities with the greatest negative effect on the annual rate of the ITI**

Activity (Basic aggregate of the ITI)	Annual rate (%)	Effect
Manufacture of motor vehicles, trailers and semi-trailers	-4.0	-0.487
Manufacture of other non-metallic ore products	-8.6	-0.325
Manufacture of metal products for construction, containers made of metal, steam generators, weapons and ammunition	-12.8	-0.298
Repair and installation of machinery and equipment	-16.4	-0.245

**Monthly rate performance <sup>1</sup>**

The variation of the Industrial Turnover Index between October and September was 8.2%. This month-on-month rate of October was the highest in the last five years.

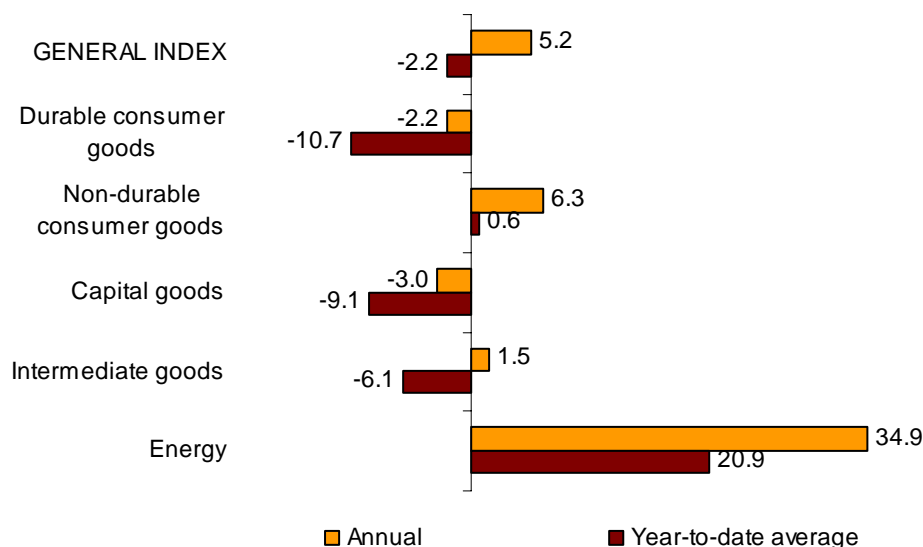


<sup>1</sup> In order to contribute to the analysis and interpretation of data, this section has been added with the monthly rate evolution of the ITI in the last years. The monthly rates of this type of series may have some degree of seasonal behaviour, therefore it is recommended that it be evaluated in relation to the item of data for the same month in previous years.

## Year-to-date average rates

The average rate of the Industrial Turnover Index registered a variation of **-2.2%** in the period from January to October, as compared with the same period of 2011. By economic destination of the goods, the rate is negative in all industrial sectors, except in Energy and Non-durable consumer goods.

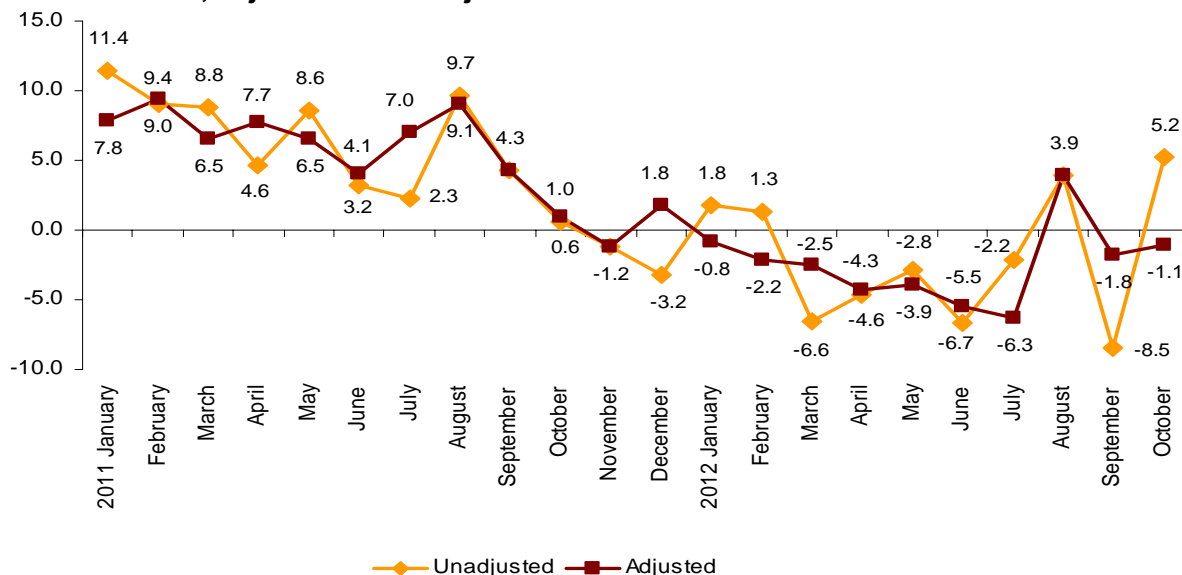
### Annual and year-to-date average rates of ITI General index and by economic destination of the goods



## Evolution of the ITI, adjusted for the calendar effect

After adjusting for the calendar effect, that is, the difference between the number of working days in a given month in different years, the interannual variation of the ITI in the month of October was **-1.1%**, more than half point above that September.

### Annual evolution of the ITI General Index, adjusted and unadjusted



## Annual evolution of Industrial New Orders Received

The Industrial New Orders Received Index (INORI) experienced an annual variation of 5.5% in October, more than eleven-and-a-half points above that registered in September.

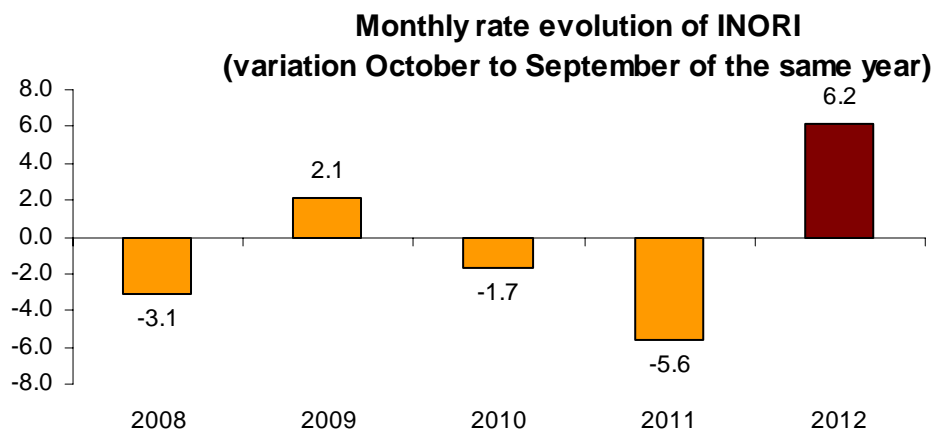
By economic destination of the goods, the industrial sectors that presented the greatest positive effects on the general index were:

- **Energy**, with a variation of 34.4% and an effect of 3.576 motivated by the increase registered in *Manufacture of coke and refined petroleum products*.
- **Non-durable consumer goods**, with an annual variation of 6.4% and an effect of 1.905, caused by the positive evolution in new orders in the most parts of the activities comprising this sector. Among them worth noting *Manufacture of other food products (except grain mill products and food for animals)*.

In turn, **Durable consumer goods** was the only industrial sector that presented negative effect on the general index, with an annual variation of -5.4% and an effect of -0.125, mainly due to the increase registered in the *Manufacture of furniture*.

## Monthly rate performance<sup>2</sup>

The variation of the New Orders Received between October and September was 6.2%. This month-on-month rate was the highest registered in the last five year.

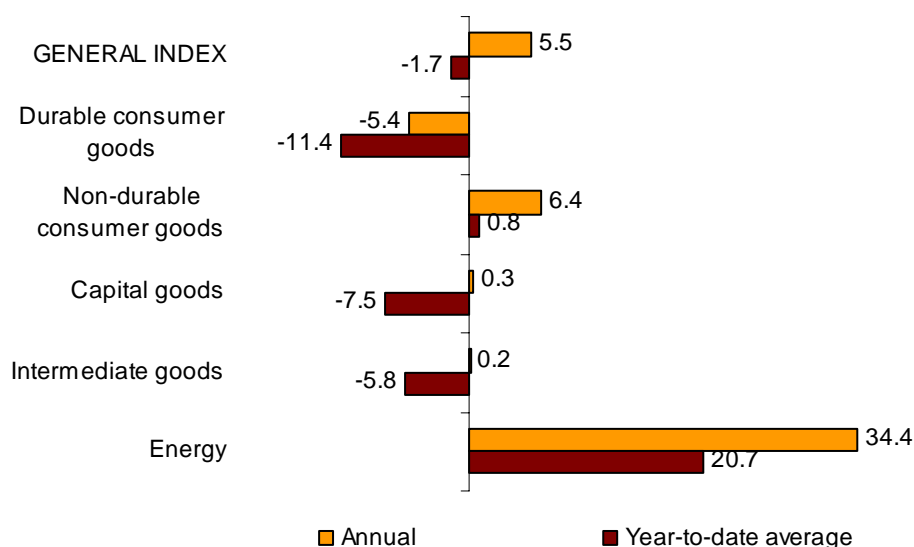


<sup>2</sup> In order to contribute to the analysis and interpretation of data, this section has been added with the monthly rate evolution of the INORI in the last years. The monthly rates of this type of series may have some degree of seasonal behaviour, therefore it is recommended that it be evaluated in relation to the item of data for the same month in previous years.

## Year-to-date average rates

The average of the General Industrial New Orders Received Index in the first ten months of the year registered a variation rate of **-1.7%**, as compared with the same period of 2011. By economic destination of the goods, this variation rate was negative, in all of the industrial sectors, except Energy and Non-durable consumer goods.

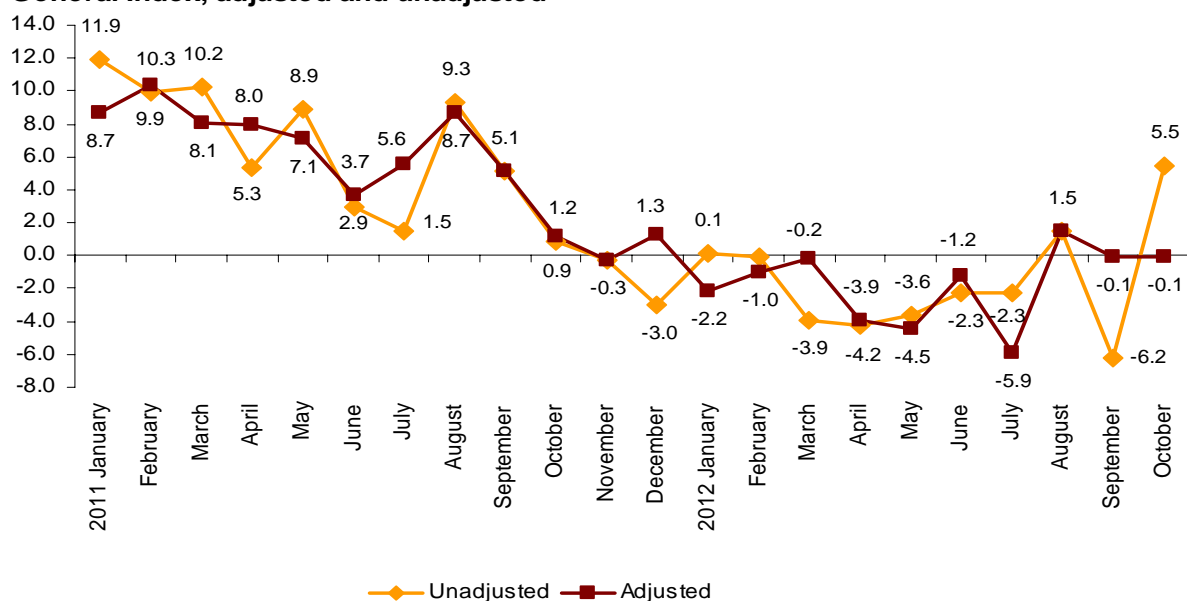
### Annual and year-to-date average rates of INORI General index and by economic destination of the goods



## Evolution of the INORI, adjusted for the calendar effect

After eliminating the calendar effect, that is, the difference between the number of working days in a given month in different years, the interannual variation of the INORI was **-0.1%**, the same than in September.

### Annual evolution of the INORI General Index, adjusted and unadjusted



# Industrial Turnover Indices. Base 2005

## Industrial New Orders Received Indices. Base 2005

### October 2012

Provisional data

19 December 2012

#### 1. Industrial turnover indices by economic destination<sup>1</sup>

	Index	% variation		Effect
		Annual	Year-to-date average	Annual
<b>GENERAL INDEX</b>	<b>101.4</b>	<b>5.2</b>	<b>-2.2</b>	
<b>1. CONSUMER GOODS</b>	<b>105.2</b>	<b>5.7</b>	<b>-0.3</b>	<b>1.776</b>
1.1. DURABLE CONSUMER GOODS	51.4	-2.2	-10.7	-0.051
- Manufacture of consumer electronics, optical instruments and photographic equipment	8.4	-16.8	-38.3	-0.011
- Manufacture of household appliances	72.9	4.9	-3.2	0.035
- Manufacture of motorcycles, bicycles, vehicles for the disabled and others	24.7	-19.7	-34.7	-0.021
- Manufacture of furniture	53.9	-4.2	-11.2	-0.052
- Manufacture of jewellery, costume jewellery and musical instruments	101.2	-1.1	-2.2	-0.002
1.2. NON-DURABLE CONSUMER GOODS	114.0	6.3	0.6	1.827
- Food industries (except grain mill products and food for animals)	129.1	8.3	3.0	1.326
- Manufacture of beverages	105.6	10.4	1.7	0.343
- Manufacture of tobacco	74.9	-16.4	2.9	-0.040
- Manufacture of knitted fabrics, carpets, rope, non-woven fabrics, textile products for technical use and industrial and other textile products	72.5	2.6	-4.1	0.016
- Manufacture of garments	77.6	9.2	-1.9	0.114
- Leather and footwear industry	79.6	-4.2	-3.6	-0.034
- Graphic arts and reproduction of recorded media	68.1	-7.9	-14.2	-0.111
- Manufacture of cleaning articles, perfumes and cosmetics	96.7	0.1	-2.1	0.001
- Manufacture of pharmaceutical products	145.5	5.3	-0.7	0.189
- Manufacture of sporting goods; games and toys and Other manufacturing industries	109.1	5.5	-5.5	0.023
<b>2. CAPITAL GOODS</b>	<b>89.1</b>	<b>-3.0</b>	<b>-9.1</b>	<b>-0.685</b>
- Manufacture of metal products for construction, containers made of metal, steam generators, weapons and ammunition	52.9	-12.8	-19.3	-0.298
- Manufacture of computers, peripherals and telecommunications equipment; appliances for measuring and navigation; radiation and medical and therapeutic equipment	60.0	-6.4	-11.4	-0.038
- Manufacture of machinery and equipment n.e.c.	89.7	2.7	-5.3	0.092
- Manufacture of motor vehicles, trailers and semi-trailers	90.5	-4.0	-10.3	-0.487
- Naval, railway, aircraft and spacecraft construction. Combat vehicles	172.5	12.0	-0.4	0.297
- Manufacture of medical and dental instruments and supplies	91.4	-4.5	-0.8	-0.006
- Repair and installation of machinery and equipment	97.5	-16.4	-5.0	-0.245
<b>3. INTERMEDIATE GOODS</b>	<b>91.4</b>	<b>1.5</b>	<b>-6.1</b>	<b>0.540</b>
- Other mining and quarrying	72.4	-10.7	-7.8	-0.075
- Manufacture of grain mill products, starches, and food for animals	161.3	15.9	2.8	0.488
- Preparation and spinning of textile fibres. Manufacture of woven textiles. Textile finishings	60.7	12.2	-7.1	0.057
- Wood and cork industry	54.7	-7.1	-9.1	-0.091
- Paper industry	108.3	5.0	-3.3	0.130
- Chemical industry except cleaning articles, perfumes and cosmetics	108.9	10.0	-0.2	0.569
- Rubber and plastic material transformation industry	96.3	-1.0	-7.8	-0.041
- Manufacture of other non-metallic ore products	48.7	-8.6	-14.9	-0.325
- Metallurgy; manufacture of iron, steel and ferro-alloy products	103.9	0.9	-10.7	0.051
- Forging, stamping, embossing and rolling of metals. - Manufacture of tools, hardware goods, containers and other metal products	98.0	1.4	-4.7	0.065
- Manufacture of electronic components, assembled printed circuits, and magnetic and optical media	38.3	-49.7	-30.8	-0.124
- Manufacture of electrical material and equipment except household appliances	98.8	-5.1	-3.2	-0.162
<b>4. ENERGY (Except supply of electrical energy, gas, steam, air conditioning)</b>	<b>175.5</b>	<b>34.9</b>	<b>20.9</b>	<b>3.569</b>
- Extraction of anthracite, coal and lignite	110.9	4.3	-16.3	..
- Extraction of crude oil, petroleum and natural gas	..	..	..	..
- Manufacture of coke and refined petroleum products	177.3	35.6	21.5	3.556

<sup>1</sup> Regulation (EC) no. 656/2007 of the European Commission.

(..) Data not available due to statistical secrecy.

## 2. Industrial turnover indices adjusted by calendar effects

	Original index	% variation		Adjusted index	% variation	
		Annual	Year-to-date average		Annual	Year-to-date average
<b>General index</b>	<b>101.4</b>	<b>5.2</b>	<b>-2.2</b>	<b>98.5</b>	<b>-1.1</b>	<b>-2.7</b>
1. Consumer goods	105.2	5.7	-0.3	102.4	-0.6	-0.9
1.1. Durable consumer goods	51.4	-2.2	-10.7	49.5	-9.6	-11.3
1.2. Non-durable consumer goods	114.0	6.3	0.6	111.2	0.3	0.0
2. Capital goods	89.1	-3.0	-9.1	86.4	-9.1	-9.7
3. Intermediate goods	91.4	1.5	-6.1	88.5	-5.1	-6.2
4. Energy*	175.5	34.9	20.9	174.1	32.8	20.8

\*Except supply of electrical energy, gas, steam and air conditioning.

### 3. Interannual rates

#### Industrial turnover indices by economic destination

Period	General index		Consumer goods		Durable consumer goods		Non-durable consumer goods	
	Original	Adjusted <sup>1</sup>	Original	Adjusted <sup>1</sup>	Original	Adjusted <sup>1</sup>	Original	Adjusted <sup>1</sup>
2011 October *	0.6	1.0	-0.6	-0.2	-17.3	-17.0	1.1	1.4
November *	-1.2	-1.2	-1.9	-1.9	-20.8	-20.8	0.0	0.0
December *	-3.2	1.8	-1.4	3.7	-16.8	-11.3	0.0	4.9
2012 January *	1.8	-0.8	3.5	0.8	-6.5	-9.7	4.3	1.7
February	1.3	-2.2	3.6	-1.3	-11.4	-15.6	5.0	0.4
March *	-6.6	-2.5	-3.0	1.3	-15.3	-10.5	-1.8	2.3
April *	-4.6	-4.3	-3.5	-3.2	-15.4	-15.0	-2.5	-2.2
May *	-2.8	-3.9	1.1	0.0	-11.4	-12.6	2.3	1.2
June *	-6.7	-5.5	-2.6	-1.3	-11.3	-9.8	-1.9	-0.6
July *	-2.2	-6.3	-1.8	-5.9	-10.1	-14.8	-1.1	-5.0
August *	3.9	3.9	2.3	2.3	1.1	1.1	2.4	2.4
September *	-8.5	-1.8	-7.2	-0.4	-19.0	-11.2	-6.2	0.4
October	5.2	-1.1	5.7	-0.6	-2.2	-9.6	6.3	0.3

Period	Capital goods		Intermediate goods		Energy	
	Original	Adjusted <sup>1</sup>	Original	Adjusted <sup>1</sup>	Original	Adjusted <sup>1</sup>
2011 October *	-1.0	-0.6	-3.0	-2.7	26.3	26.4
November *	-4.4	-4.4	-5.1	-5.1	28.2	28.2
December *	-11.4	-6.7	-4.5	0.8	16.6	18.1
2012 January *	-3.3	-5.9	-2.1	-4.9	22.4	21.6
February	-2.2	-7.9	-5.2	-6.2	28.4	28.1
March *	-14.7	-10.7	-11.5	-7.3	22.0	23.4
April *	-10.4	-10.1	-6.7	-6.3	10.6	10.7
May *	-7.4	-8.4	-7.1	-8.2	12.9	12.5
June *	-14.7	-13.5	-8.3	-6.9	6.8	7.2
July *	-6.6	-10.6	-4.3	-8.6	12.9	11.7
August *	-0.6	-0.6	-3.8	-3.8	34.1	34.1
September *	-20.7	-14.6	-10.9	-3.8	24.8	27.1
October	-3.0	-9.1	1.5	-5.1	34.9	32.8

<sup>1</sup> Index rates adjusted for calendar effects.

\* Data revised.



#### 4. Industrial Turnover Indices by branch of activity (CNAE 2009)

	Index	% variation		Effect Annual
		Annual	Year-to-date average	
<b>GENERAL INDEX</b>	<b>101.4</b>	<b>5.2</b>	<b>-2.2</b>	
<b>B. Mining and quarrying industries</b>	<b>79.7</b>	<b>-6.8</b>	<b>-9.3</b>	<b>-0.062</b>
Extraction of anthracite, coal and lignite	110.9	4.3	-16.3	..
Extraction of crude oil, petroleum and natural gas	..	..	..	..
Other mining and quarrying	72.4	-10.7	-7.8	-0.075
<b>C. Manufacturing industry</b>	<b>101.6</b>	<b>5.3</b>	<b>-2.2</b>	<b>5.262</b>
Food industry	133.7	9.6	3.0	1.814
Manufacture of beverages	105.6	10.4	1.7	0.343
Manufacture of tobacco	74.9	-16.4	2.9	-0.040
Textile industry	66.5	6.8	-5.4	0.072
Manufacture of garments	77.6	9.2	-1.9	0.114
Leather and footwear industry	79.6	-4.2	-3.6	-0.034
Manufacture of wood and of products of wood and cork, except furniture; basketmaking and wickerwork	54.7	-7.1	-9.1	-0.091
Paper industry	108.3	5.0	-3.3	0.130
Graphic arts and reproduction of recorded media	68.1	-7.9	-14.2	-0.111
Manufacture of coke and refined petroleum products	177.3	35.6	21.5	3.556
Chemical industry	106.5	8.1	-0.6	0.570
Manufacture of pharmaceutical products	145.5	5.3	-0.7	0.189
Rubber and plastic material transformation industry	96.3	-1.0	-7.8	-0.041
Manufacture of other non-metallic ore products	48.7	-8.6	-14.9	-0.325
Metallurgy; manufacture of iron, steel and ferro-alloy products	103.9	0.9	-10.7	0.051
Manufacture of metal products, except machinery and equipment	78.3	-3.3	-9.6	-0.233
Manufacture of computer, electronic and optical products	38.8	-19.0	-18.9	-0.174
Manufacture of electrical material and equipment	92.3	-3.2	-3.2	-0.127
Manufacture of machinery and equipment n.e.c.	89.7	2.7	-5.3	0.092
Manufacture of motor vehicles, trailers and semi-trailers	90.5	-4.0	-10.3	-0.487
Manufacture of other transport material	146.0	10.7	-2.5	0.276
Manufacture of furniture	53.9	-4.2	-11.2	-0.052
Other manufacturing industries	103.7	2.0	-3.7	0.015
Repair and installation of machinery and equipment	97.5	-16.4	-5.0	-0.245

(..) Data not available due to statistical secrecy.

## 5. Industrial New Orders Received Indices by economic destination<sup>1</sup>

	Index	% variation		Effect Annual
		Annual	Year-to-date average	
<b>GENERAL INDEX</b>	<b>99.4</b>	<b>5.5</b>	<b>-1.7</b>	
<b>1. CONSUMER GOODS</b>	<b>106.2</b>	<b>5.5</b>	<b>-0.2</b>	<b>1.780</b>
1.1. DURABLE CONSUMER GOODS	48.9	-5.4	-11.4	-0.125
- Manufacture of consumer electronics, optical instruments and photographic equipment	8.9	-14.6	-37.1	-0.010
- Manufacture of household appliances	72.2	3.4	-4.2	0.025
- Manufacture of motorcycles, bicycles, vehicles for the disabled and others	26.9	-14.1	-38.3	-0.016
- Manufacture of furniture	48.0	-11.7	-12.3	-0.141
- Manufacture of jewellery, costume jewellery and musical instruments	106.8	8.5	3.1	0.016
1.2. NON-DURABLE CONSUMER GOODS	115.6	6.4	0.8	1.905
- Food industries (except grain mill products and food for animals)	130.0	9.1	3.0	1.482
- Manufacture of beverages	106.4	1.4	1.7	0.052
- Manufacture of tobacco	74.9	-16.4	2.7	-0.041
- Manufacture of knitted fabrics, carpets, rope, non-woven fabrics, textile products for technical use and industrial and other textile products	73.9	1.0	-3.6	0.006
- Manufacture of garments	76.5	5.3	-2.2	0.068
- Leather and footwear industry	130.0	15.3	-1.3	0.172
- Graphic arts and reproduction of recorded media	59.1	-9.0	-14.3	-0.113
- Manufacture of cleaning articles, perfumes and cosmetics	101.6	6.0	-1.9	0.080
- Manufacture of pharmaceutical products	144.2	5.9	-0.2	0.214
- Manufacture of sporting goods; games and toys and Other manufacturing industries	95.6	-3.7	-1.6	-0.015
<b>2. CAPITAL GOODS</b>	<b>80.9</b>	<b>0.3</b>	<b>-7.5</b>	<b>0.062</b>
- Manufacture of metal products for construction, containers made of metal, steam generators, weapons and ammunition	69.1	9.5	-12.9	0.235
- Manufacture of computers, peripherals and telecommunications equipment; appliances for measuring and navigation; radiation and medical and therapeutic equipment	40.8	-30.1	-14.6	-0.168
- Manufacture of machinery and equipment n.e.c.	83.7	-7.1	-1.5	-0.252
- Manufacture of motor vehicles, trailers and semi-trailers	86.2	3.4	-12.0	0.378
- Naval, railway, aircraft and spacecraft construction. Combat vehicles	78.7	-2.4	29.8	-0.031
- Manufacture of medical and dental instruments and supplies	90.0	-2.2	0.7	-0.003
- Repair and installation of machinery and equipment	85.2	-7.9	3.2	-0.096
<b>3. INTERMEDIATE GOODS</b>	<b>90.8</b>	<b>0.2</b>	<b>-5.8</b>	<b>0.067</b>
- Other mining and quarrying	73.4	-11.1	-7.9	-0.081
- Manufacture of grain mill products, starches, and food for animals	161.8	17.9	3.6	0.553
- Preparation and spinning of textile fibres. Manufacture of woven textiles. Textile finishings	61.4	13.7	-3.8	0.065
- Wood and cork industry	54.1	-5.9	-8.0	-0.076
- Paper industry	107.5	5.0	-1.9	0.131
- Chemical industry except cleaning articles, perfumes and cosmetics	111.0	8.3	-0.8	0.500
- Rubber and plastic material transformation industry	92.4	-1.9	-8.5	-0.082
- Manufacture of other non-metallic ore products	48.8	-7.8	-13.2	-0.301
- Metallurgy; manufacture of iron, steel and ferro-alloy products	104.0	3.3	-11.5	0.197
- Forging, stamping, embossing and rolling of metals. - Manufacture of tools, hardware goods, containers and other metal products	95.3	1.2	-5.6	0.058
- Manufacture of electronic components, assembled printed circuits, and magnetic and optical media	39.5	-51.5	-31.4	-0.140
- Manufacture of electrical material and equipment except household appliances	96.2	-20.0	-0.2	-0.757
<b>4. ENERGY (Except supply of electrical energy, gas, steam, air conditioning)</b>	<b>174.0</b>	<b>34.4</b>	<b>20.7</b>	<b>3.576</b>
- Extraction of anthracite, coal and lignite	81.4	-4.7	-17.7	..
- Extraction of crude oil, petroleum and natural gas	..	..	..	..
- Manufacture of coke and refined petroleum products	176.5	35.0	21.2	3.579

<sup>1</sup> Regulation (EC) no. 656/2007 of the European Commission.

(..) Data not available due to statistical secrecy.

## 6. Industrial New Orders indices adjusted by calendar effects

	Original index	% variation		Adjusted index	% variation	
		Annual	Year-to-date average		Annual	Year-to-date average
<b>General index</b>	<b>99.4</b>	<b>5.5</b>	<b>-1.7</b>	<b>97.1</b>	<b>-0.1</b>	<b>-1.8</b>
1. Consumer goods	106.2	5.5	-0.2	103.5	-0.7	-0.8
1.1. Durable consumer goods	48.9	-5.4	-11.4	47.4	-11.3	-11.6
1.2. Non-durable consumer goods	115.6	6.4	0.8	112.7	0.0	0.1
2. Capital goods	80.9	0.3	-7.5	78.6	-6.3	-7.9
3. Intermediate goods	90.8	0.2	-5.8	88.1	-5.9	-6.2
4. Energy*	174.0	34.4	20.7	172.7	31.5	20.6

\*Except supply of electrical energy, gas, steam and air conditioning.

## 7. Interannual rates

### Industrial New Orders indices by economic destination

Period	General index		Consumer goods		Durable consumer goods		Non-durable consumer goods	
	Original	Adjusted <sup>1</sup>	Original	Adjusted <sup>1</sup>	Original	Adjusted <sup>1</sup>	Original	Adjusted <sup>1</sup>
2011 October *	0.9	1.2	-0.6	-0.2	-19.9	-19.6	1.3	1.7
November *	-0.3	-0.3	-2.9	-2.9	-18.8	-18.8	-1.4	-1.4
December	-3.0	1.3	-3.5	1.3	-22.7	-18.6	-1.8	3.2
2012 January *	0.1	-2.2	3.6	0.9	-12.1	-14.5	5.0	2.2
February *	-0.1	-1.0	-1.6	-6.8	-13.1	-14.0	-0.5	-5.9
March *	-3.9	-0.2	-0.9	3.4	-12.6	-8.5	0.2	4.6
April *	-4.2	-3.9	-3.9	-3.6	-18.5	-18.2	-2.7	-2.3
May *	-3.6	-4.5	1.1	0.0	-12.5	-13.5	2.2	1.1
June *	-2.3	-1.2	-1.8	-0.5	-13.1	-11.9	-0.8	0.5
July *	-2.3	-5.9	-0.1	-4.2	-7.0	-11.0	0.4	-3.7
August *	1.5	1.5	1.8	1.8	-2.1	-2.1	2.0	2.0
September *	-6.2	-0.1	-4.9	2.0	-14.4	-7.8	-4.2	2.9
October	5.5	-0.1	5.5	-0.7	-5.4	-11.3	6.4	0.0

Period	Capital goods		Intermediate goods		Energy	
	Original	Adjusted <sup>1</sup>	Original	Adjusted <sup>1</sup>	Original	Adjusted <sup>1</sup>
2011 October *	0.5	0.9	-3.3	-3.0	27.0	27.1
November *	0.6	0.6	-4.8	-4.8	27.6	27.6
December	-9.6	-4.5	-3.7	1.4	15.9	17.9
2012 January *	-11.7	-14.2	-1.0	-3.7	22.0	20.8
February *	-3.8	-8.1	-4.2	-7.5	28.3	27.9
March *	-9.8	-5.5	-9.2	-5.1	21.9	23.8
April *	-7.3	-6.9	-7.1	-6.7	10.7	10.8
May *	-10.0	-11.1	-7.6	-8.6	12.6	12.2
June *	-1.3	0.2	-5.7	-4.4	6.8	7.3
July *	-9.7	-13.7	-4.5	-8.5	12.7	11.1
August *	-8.2	-8.2	-6.0	-6.0	33.9	33.9
September *	-12.8	-5.7	-12.0	-5.4	24.8	27.9
October	0.3	-6.3	0.2	-5.9	34.4	31.5

<sup>1</sup> Index rates adjusted for calendar effects.

\* Data revised.

## 8. Industrial New Orders Received Indices by branch of activity (CNAE 2009)

	Index	% variation		Effect
		Annual	Year-to-date average	Annual
<b>GENERAL INDEX</b>	<b>99.4</b>	<b>5.5</b>	<b>-1.7</b>	
<b>B. Mining and quarrying industries</b>	75.5	-9.2	-9.3	-0.084
Extraction of anthracite, coal and lignite	81.4	-4.7	-17.7	..
Extraction of crude oil, petroleum and natural gas	..	..	..	..
Other mining and quarrying	73.4	-11.1	-7.9	-0.081
<b>C. Manufacturing industry</b>	99.6	5.6	-1.6	5.570
Food industry	134.5	10.5	3.1	2.034
Manufacture of beverages	106.4	1.4	1.7	0.052
Manufacture of tobacco	74.9	-16.4	2.7	-0.041
Textile industry	67.6	6.5	-3.7	0.072
Manufacture of garments	76.5	5.3	-2.2	0.068
Leather and footwear industry	130.0	15.3	-1.3	0.172
Manufacture of wood and of products of wood and cork, except furniture; basketmaking and wickerwork	54.1	-5.9	-8.0	-0.076
Paper industry	107.5	5.0	-1.9	0.131
graphic arts and reproduction of recorded media	59.1	-9.0	-14.3	-0.113
Manufacture of coke and refined petroleum products	176.5	35.0	21.2	3.579
Chemical industry	109.2	7.9	-1.0	0.580
Manufacture of pharmaceutical products	144.2	5.9	-0.2	0.214
Rubber and plastic material transformation industry	92.4	-1.9	-8.5	-0.082
Manufacture of other non-metallic ore products	48.8	-7.8	-13.2	-0.301
Metallurgy; manufacture of iron, steel and ferro-alloy products	104.0	3.3	-11.5	0.197
Manufacture of metal products, except machinery and equipment	83.9	4.1	-8.2	0.293
Manufacture of computer, electronic and optical products	29.8	-35.4	-21.9	-0.318
Manufacture of electrical material and equipment	90.2	-16.2	-0.9	-0.731
Manufacture of machinery and equipment n.e.c.	83.7	-7.1	-1.5	-0.252
Manufacture of motor vehicles, trailers and semi-trailers	86.2	3.4	-12.0	0.378
Manufacture of other transport material	69.4	-3.3	20.2	-0.047
Manufacture of furniture	48.0	-11.7	-12.3	-0.141
Other manufacturing industries	97.5	-0.2	0.1	-0.002
Repair and installation of machinery and equipment	85.2	-7.9	3.2	-0.096

(..) Data not available due to statistical secrecy.