

Non-hotel Tourist Accommodation Occupancy Survey
January 2021. Provisional Data

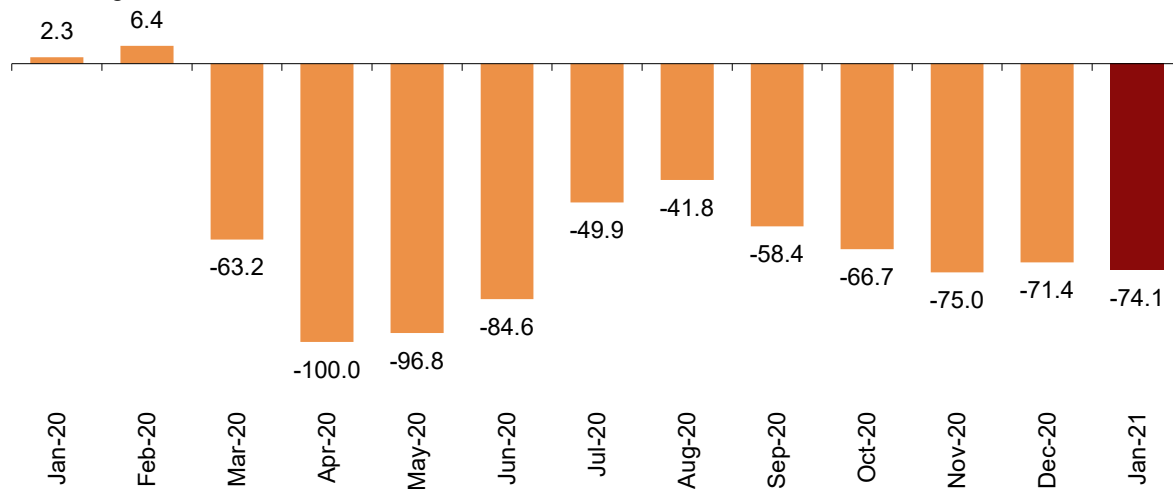
Overnight stays in non-hotel tourist accommodation fell 74.1% in January, as compared with the same month of 2020

Overnight stays in non-hotel tourist accommodation (holiday dwellings, tourist campsites, rural tourism accommodation and youth hostels) exceeded 1.4 million in January, 74.1% less than in the same month of 2020.

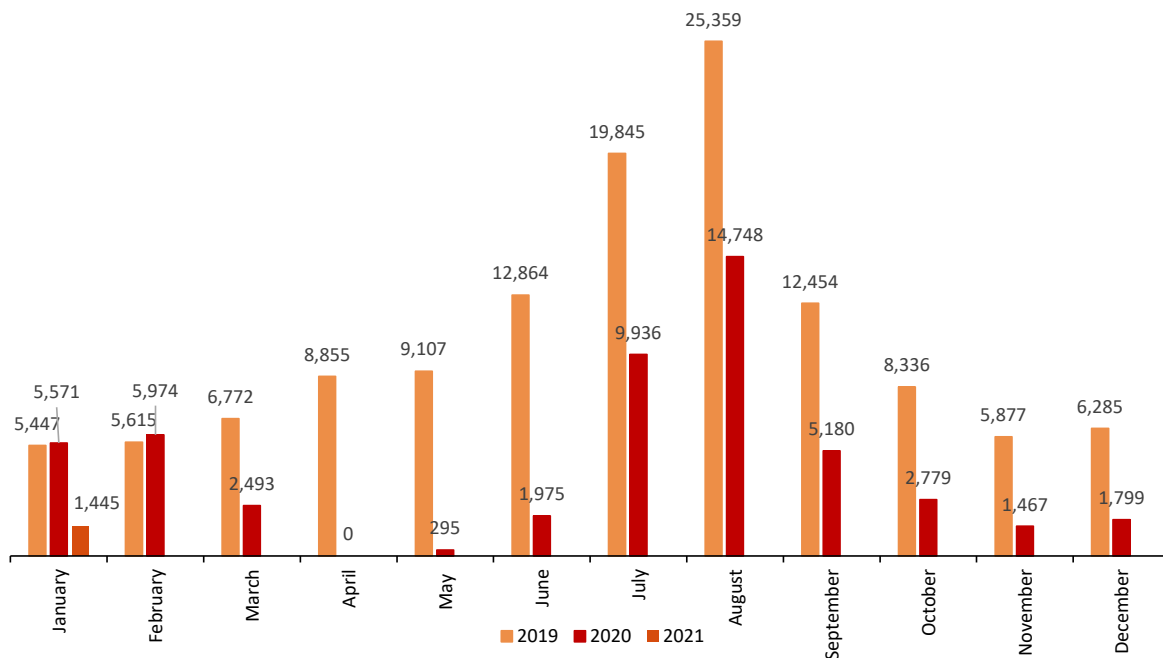
By traveller origin, overnight stays by residents of Spain decreased by 49.4% in the annual rate, exceeding 639 thousand. In turn, overnight stays by non-residents fell by 81.3%, to 805 thousand.

Annual variation rate for overnight stays

Percentage



Overnight stays in non-hotel accommodation monthly. Comparative 2019-2020-2021
Thousands



Open establishments

In January, a total of 83,246 hotels were open in Spain, 33.0% less than in the same month of 2020. This represented 59.5% of the total directory of establishments for that month.

Type of accommodation	Number of open establishments according to the survey	Percentage of total establishments in the directory	Number of estimated places according to the survey	Percentage of total places in the directory
TOTAL	83,246	59.5%	608,471	61.3%
Holiday dwellings (*)	71,165	60.7%	273,557	61.6%
Campsites	350	57.9%	218,201	69.4%
Rural T.	11,593	53.9%	104,851	52.4%
Hostels	138	31.7%	11,862	35.2%
Annual rate	-33.0		-27.0	

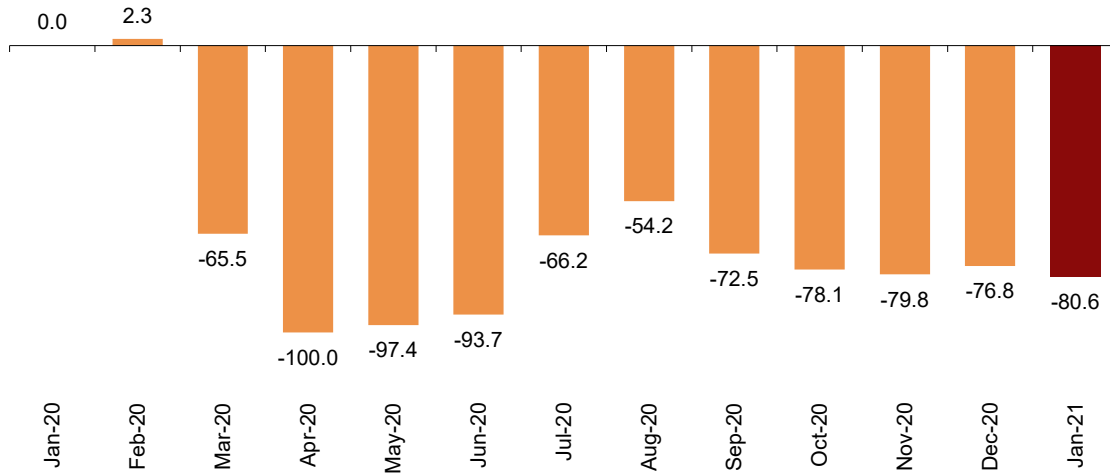
(*) Estimated number of apartments

Holiday Dwellings

Overnight stays in holiday dwellings decreased by 80.6% in January in the annual rate. Resident overnight stays decreased by 42.6% and non-resident overnight stays did so by 88.4%.

Annual variation rate for overnight stays

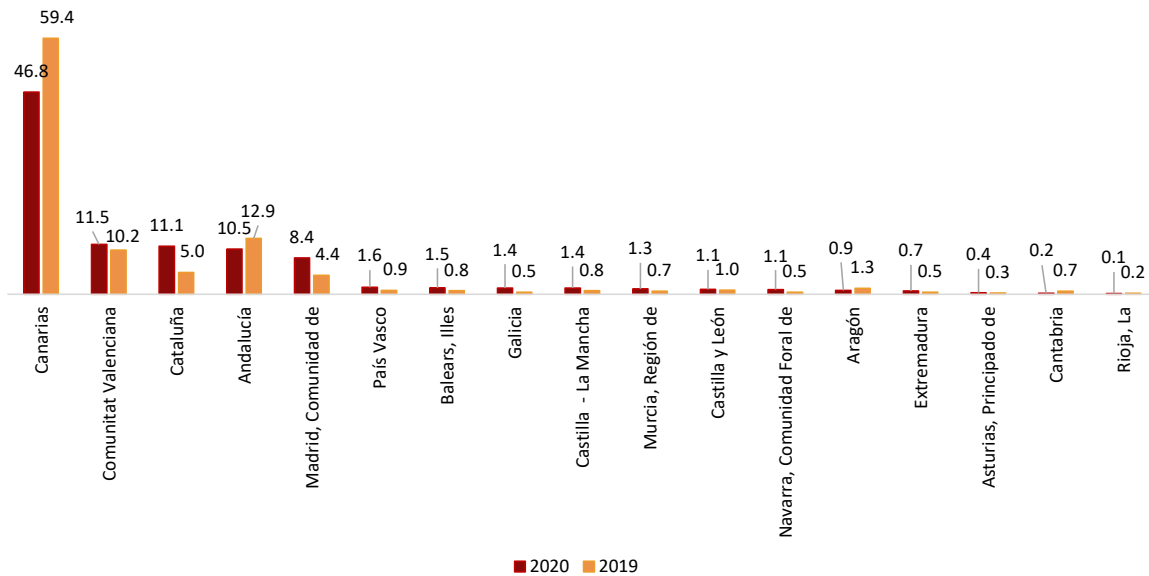
Percentage



Canarias, Andalucía, and Cataluña were the main destinations for travellers in January, with annual variation rates in the number of overnight stays of -88.0%, -78.7% and -38.3%, respectively.

Distribution of total overnight stays. Comparative November 2020-2021

Percentage



By tourist areas, the Island of Tenerife was the preferred destination for tourist apartments, with 105,923 overnight stays and an occupancy rate of 19.9% for the apartments available.

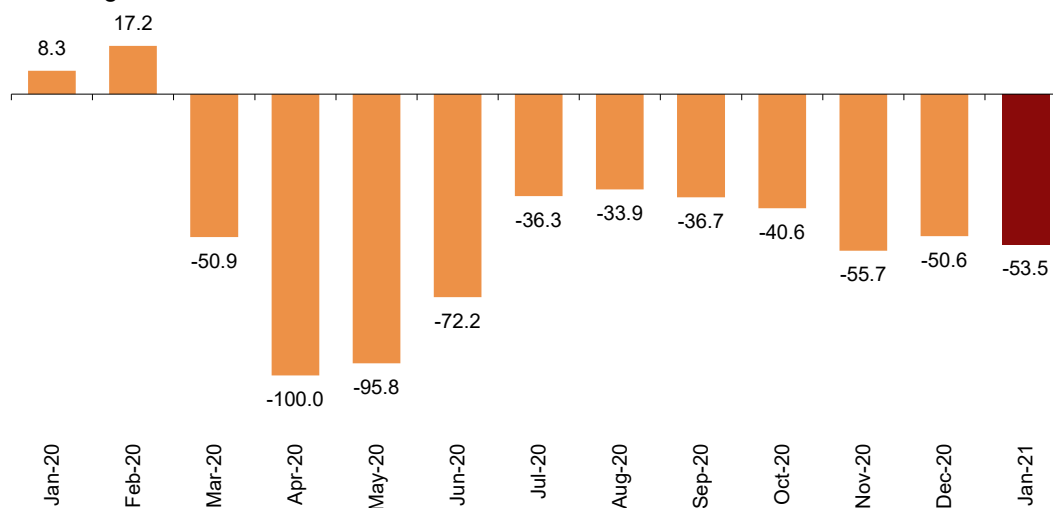
The tourist sites with the greatest number of overnight stays in January were San Bartolomé de Tirajana, Madrid and Adeje.

Tourist Campsites

Overnight stays at tourist campsites registered a decrease of 53.5% in January as compared with the same month of the previous year. Resident overnight stays decreased by 35.7% and non-resident overnight stays did so by 57.9%.

Annual variation rate for overnight stays

Percentage



In January, 31.6% of the campsites offered were occupied, 21.0% more than in the same month of 2020. The weekend occupancy rate reached 30.9%, with a 23.0% annual decrease.

Comunitat Valenciana was the preferred destination for tourist campsites, with 330,520 overnight stays, representing a decrease of 49.1% compared to January 2020. Comunidad Foral de Navarra reached the highest occupancy rate, with 45.0% of bed-places offered.

By tourist areas, Costa Blanca was the preferred destination, with 203,701 overnight stays and an occupancy rate of 61.6% of the pitches offered.

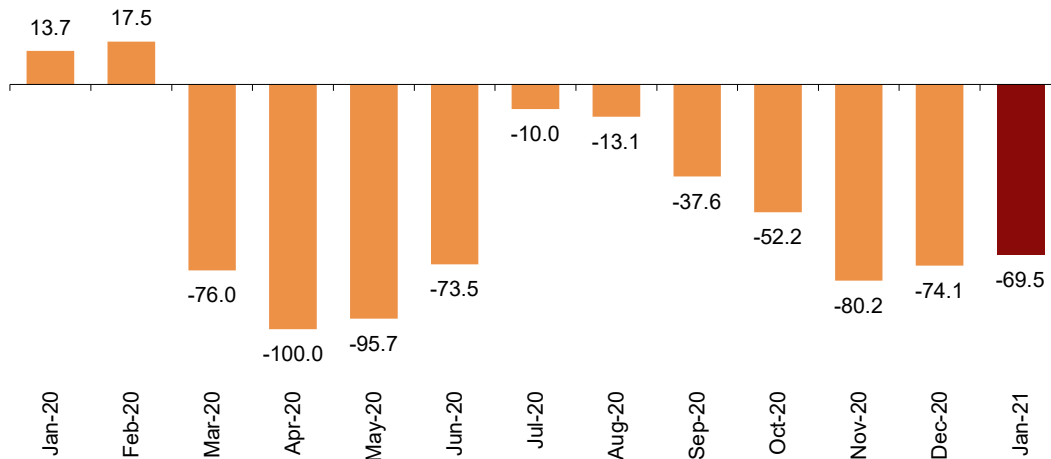
The tourist sites with the most overnight stays were Benidorm, Marbella and Cartagena.

Rural tourism accommodation

Overnight stays in rural tourist accommodation decreased 69.5% in January compared with the same month of 2020. Resident overnight stays decreased by 68.3% and non-resident overnight stays did so by 74.1%.

Annual variation rate for overnight stays

Percentage



In rural tourism accommodation, 3.4% of the bed-places were occupied, 58.0% less than January 2020. The weekend occupancy rate stood at 4.9%, with a decrease of 69.1%.

By Autonomous Community, Castilla y León was the preferred destination, with 13,004 overnight stays, 77.5% less than in January 2020. Canarias reached the highest occupancy rate, with 13.3% of bed-places offered.

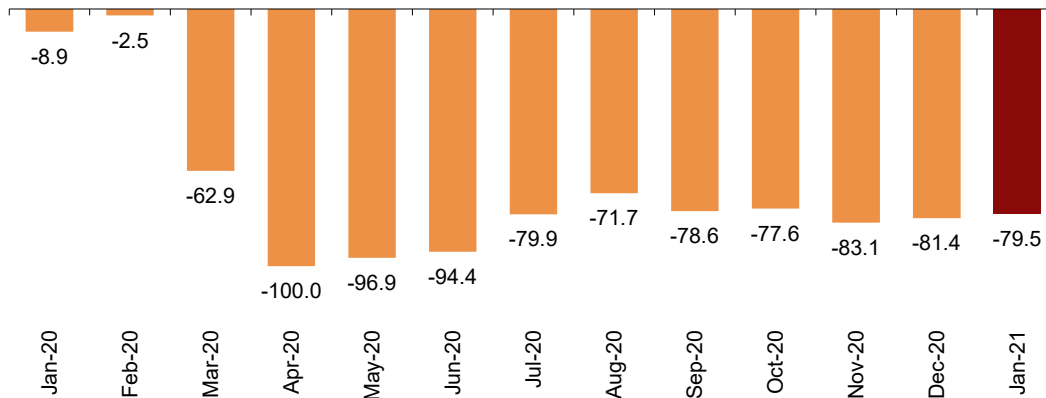
By tourist area, the Pirineo Navarro was the main destination, with 7,551 overnight stays. The island of La Palma registered the highest occupancy rate, with 15.9% of the bed-places offered.

Hostels

Overnight stays in hostels¹, registered an annual decrease of 79.5% January. Resident overnight stays decreased by 78.6% and non-resident overnight stays did so by 81.0%.

Annual variation rate for overnight stays

Percentage



In hostels, 7.0% of the available bed-places were occupied, 61.2% less than in January 2020. The weekend occupancy rate reached 7.5%, with a 64.7% decrease.

By Autonomous Community, Cataluña was the preferred destination, with 9,148 overnight stays, 56.5% less than in January 2020. Canarias reached the highest occupancy rate, with 38.0% of the bed-places offered.

Price indices

The Tourist Apartment Price Index (TAPI) decreased by 15.4% in January compared to the same month of 2020, the Rural Tourism Accommodation Price Index (RTAPI) decreased by 0.7%, and the Tourist Campsite Price Index (TCPI) decreased by 0.1%.

¹ Since January 2021, tourist hostels have been included in the survey, in addition to those belonging to the Spanish Youth Hostels Network. The data published are not comparable with those of January 2021. Link coefficients are thus published to allow the annual variation rates to be calculated.

Evolution of travellers and overnight stays in all Spanish collective tourist accommodation

In January, overnight stays in Spanish collective tourist accommodation (hotels², holiday dwellings, tourist campsites, rural tourism accommodation and youth hostels) decreased by 82.2% in the annual rate. Resident overnight stays decreased by 67.3% and non-resident overnight stays did so by 89.3%.

Travellers and overnight stays in collective tourist accommodation were:

January 2021	Holiday dwellings	Campsites	Rural T.	Hostels	Non-hotel	Hotels	Total
Arrivals	109,649	47,480	32,649	4,705	194,483	1,092,017	1,286,500
Residents	75,045	33,518	29,896	2,743	141,202	863,912	1,005,114
Non-residents	34,604	13,962	2,753	1,962	53,281	228,105	281,386
Overnight stays	755,137	552,883	111,434	25,571	1,445,025	2,393,440	3,838,465
Residents	380,237	151,530	91,593	16,031	639,391	1,636,024	2,275,415
Non-residents	374,900	401,354	19,842	9,539	805,635	757,416	1,563,051

Of the total overnight stays in collective tourist accommodation, 62% corresponded to hotels, and 38% to non-hotel tourist accommodations.

The main countries of origin for all regulated tourist accommodations were Germany (with 19.8% of the total number of non-resident overnight stays), the United Kingdom (16.4%), and France (10.9%).

Canarias was the preferred destination, with over 757 thousand overnight stays (90.7% less than in January 2020). It was followed by Comunitat Valenciana (with over 628 thousand overnight stays and an annual decrease of 73.6%), and Andalucía (with over 597 thousand and a decrease of 80.8%).

Revision and updating of data

Coinciding with today's publication, the INE has updated the data for January 2020 of the Occupancy Survey in: Holiday Dwellings (HDOS), Campsites (COS), Rural Tourism Accommodation (RTAOS) and Hostels (HOS). As well as the Holiday Dwelling Price Index (HDPI), the Tourist Campsite Price Index (TCPI) and the Rural Tourism Accommodation Price Index (RTAPI).

² The press release corresponding to Hotel Tourism Short-Term Trends was published on 24 February.

Methodological note

The main objective of the Holiday Dwelling Occupancy Survey (HDOS) is to ascertain the behaviour of a series of variables that make it possible to describe the segment that occupies this type of accommodation within the tourist sector, both from the point of view of supply and demand.

The Holiday Dwelling Price Index (HDPI) is a statistical measure of the monthly evolution of the prices offered by holiday dwelling establishments to their clients.

Type of operation: monthly continuous survey.

Population scope: holiday apartment establishments and/or companies operating holiday apartments.

Geographical scope: the entire national territory, with the exception of Ceuta and Melilla, where there are no establishments of this type.

Reference period of the results: the month.

Reference period of the information: The consultation of basic data refers to a fortnight of the month, chosen randomly, in such way that the complete month is covered among all establishments.

Type of sampling: stratified sampling by province and establishment size, and stratified at island-size level for Canarias and Illes Balears.

Collection method: questionnaire filled in directly by the establishment.

For more information on these statistical operations, you can consult the [methodology and the standardised methodological report](#) for each operation in INEbase.

The main objective of the Campsite Occupancy Survey (COS) is to ascertain the behaviour of a series of variables that make it possible to describe the segment that this type of accommodation occupies within the tourist sector, from the viewpoint of both supply and demand.

The Tourist Campsite Price Index (TCPI) is a statistical measure of the monthly evolution of the prices offered by campsites to their clients.

Type of operation: monthly continuous survey.

Population scope: camping establishments.

Geographical scope: the entire national territory, with the exception of Ceuta and Melilla, where there are no establishments of this type.

Reference period of the results: the month.

Reference period of the information: seven consecutive days of each month, chosen randomly in such way that, between all the establishments, the entire month is covered.

Sample size: approximately 1200 establishments.

Type of sampling: comprehensive survey in all provinces.

Collection method: questionnaire filled in directly by the establishment.

For more information on these statistical operations, you can consult the [methodology and the standardised methodological report](#) for each operation in INEbase.

The main objective of the Rural Tourism Accommodation Occupancy Survey (RTAOS) is to ascertain the behaviour of a series of variables that make it possible to describe the fundamental characteristics of this type of accommodation within the tourist sector, both from the point of view of supply and demand.

The Rural Tourism Accommodation Price Index (RTAPI) is a statistical measure of the monthly evolution of the prices that entrepreneurs of this type of accommodation apply to their clients.

Type of operation: monthly continuous survey.

Population scope: rural tourism establishments registered as such in the corresponding register of each Autonomous Community.

Geographical scope: the entire national territory, with the exception of Ceuta and Melilla where there are no establishments of this type.

Reference period of the results: the month.

Reference period of the information: The consultation of basic data refers to all the days of the month.

Type of sampling: comprehensive survey in all provinces except those where the population size is large enough to take a sample.

Collection method: questionnaire filled in directly by the establishment.

For more information on these statistical operations, you can consult the [methodology and the standardised methodological report](#) for each operation in INEbase.

The main objective of the Hostels Occupancy Survey (HOS) is to ascertain the behaviour of a series of variables that make it possible to describe the fundamental characteristics of this type of accommodation within the tourist sector, both from the point of view of supply and demand.

Type of operation: monthly continuous survey.

Population scope: tourist hostels registered as such in the corresponding registry of each Autonomous Community and the youth hostels belonging to the Spanish Network of Youth Hostels (REAJ)

Geographical scope: the entire national territory, with the exception of Ceuta and Melilla where there are no establishments of this type.

Reference period of the results: the month.

Reference period of the information: The consultation of basic data refers to all the days of the month.

Type of sampling: comprehensive survey in all provinces except those where the population size is large enough to take a sample.

Collection method: questionnaire filled in directly by the establishment.

For more information on this statistical operation, you can consult the [methodology and the standardised methodological report](#) in INEbase.

INE statistics are produced in accordance with the Code of Good Practice for European Statistics, which is the basis for the institution's quality policy and strategy. For more information see the section on Quality at INE and the Code of Best Practices on the INE website.

For further information see **INEbase:** www.ine.es/en/ Twitter: [@es_ine](https://twitter.com/es_ine)

All press releases at: www.ine.es/en/prensa/prensa_en.htm

Press office: Telephone numbers: +34, 91, 583, 63, 08

Information Area: Telephone number: (+34) 91 583 91 00 – www.ine.es/infoine/?L=1

Tourist Accommodation Occupancy Survey (Holiday Dwellings)

January 2021

Provisional data

3rd March 2021

1. Travellers, overnight stays and average stay by Autonomous Cities and Communities

Autonomous Cities and Communities	Travellers			Overnight stays			Average stay
	Total	Residents in Spain	Residents abroad	Total	Residents in Spain	Residents abroad	
TOTAL	109.649	75.045	34.604	755.137	380.237	374.900	6,89
Andalucía	27.950	23.861	4.088	101.117	67.583	33.534	3,62
Aragón	1.604	1.522	82	6.903	6.231	672	4,30
Asturias, Principado de	451	436	15	5.719	4.930	789	12,69
Balears, Illes	801	541	260	9.378	5.001	4.377	11,71
Canarias	39.393	16.158	23.235	297.495	63.224	234.271	7,55
Cantabria	1.057	992	65	4.172	3.777	395	3,95
Castilla y León	2.464	2.342	122	9.166	8.341	825	3,72
Castilla - La Mancha	1.072	1.047	26	11.239	10.485	754	10,48
Cataluña	6.089	5.046	1.043	100.269	75.410	24.859	16,47
Comunitat Valenciana	10.030	7.027	3.002	99.061	52.426	46.635	9,88
Extremadura	797	723	74	2.236	2.079	156	2,81
Galicia	1.640	1.496	144	10.331	9.040	1.291	6,30
Madrid, Comunidad de	12.139	10.246	1.894	66.628	47.175	19.453	5,49
Murcia, Región de	1.213	1.011	202	11.234	9.222	2.013	9,26
Navarra, Comunidad Foral de	866	754	113	7.236	5.098	2.138	8,35
País Vasco	1.877	1.637	240	11.681	8.943	2.738	6,22
Rioja, La	206	206	0	1.271	1.271	0	6,18
Ceuta	-	-	-	-	-	-	-
Melilla	-	-	-	-	-	-	-
Annual rate	-81,45	-60,55	-91,37	-80,61	-42,62	-88,40	4,50
Cumulative annual rate	-81,45	-60,55	-91,37	-80,61	-42,62	-88,40	4,50

2. Capacity, occupancy and number of staff by Autonomous Cities and Communities

Autonomous Cities and Communities	Capacity		Level of occupancy				Employed personnel
	Estimated bedplaces	Estimated Holiday dwelling	Per bedplaces	Per bedplaces at weekend	Per Holiday dwelling	Per Holiday dwelling at weekend	
TOTAL	273.557	71.165	8,90	9,97	17,10	18,57	11.812
Andalucía	49.727	12.713	6,55	8,30	12,65	14,86	2.272
Aragón	5.030	1.177	4,42	5,80	9,20	11,26	398
Asturias, Principado de	1.443	352	12,79	14,03	27,48	28,34	102
Balears, Illes	2.626	678	11,52	12,27	25,54	26,78	209
Canarias	76.497	24.162	12,52	14,10	19,53	21,57	4.349
Cantabria	2.459	609	5,47	5,78	10,85	11,30	237
Castilla y León	4.511	1.115	6,55	7,79	16,04	18,04	420
Castilla - La Mancha	3.660	912	9,91	10,57	21,66	22,63	278
Cataluña	17.289	4.154	18,71	19,62	33,79	34,54	478
Comunitat Valenciana	82.039	17.014	3,90	4,31	8,95	9,67	1.417
Extremadura	2.937	655	2,46	2,67	6,41	6,96	403
Galicia	3.211	868	10,80	10,95	21,39	21,48	184
Madrid, Comunidad de	9.442	3.545	22,75	23,45	34,31	35,30	322
Murcia, Región de	6.274	1.566	5,78	6,10	14,34	14,62	144
Navarra, Comunidad Foral de	1.706	478	13,59	14,23	26,30	26,40	327
País Vasco	3.861	990	9,76	10,60	27,18	27,50	218
Rioja, La	844	177	4,86	5,58	15,13	16,54	54
Ceuta	-	-	-	-	-	-	-
Melilla	-	-	-	-	-	-	-
Annual rate	-33,60	-34,09	-70,69	-69,38	-67,49	-66,29	-49,50
Cumulative annual rate	-33,60	-34,09	-70,69	-69,38	-67,49	-66,29	-49,50

3. Travellers, overnight stays, capacity, occupancy, total number of staff with greater number of overnight stays¹

Provinces	Travellers		Overnight stays			Capacity		Level of occupancy			Employed personnel
	Residents in Spain	Residents abroad	Residents in Spain	Residents abroad	Average stay	Estimated bed-places	Estimated holiday dwelling	Per bed-places	Per Holiday dwelling	Per Holiday dwelling at weekend	
Palmas, Las	6.972	12.644	36.497	135.470	8,77	47.711	15.298	11,61	18,75	20,61	2.465
St Cruz de Tenerife	9.186	10.591	26.727	98.801	6,35	28.786	8.864	14,04	20,89	23,25	1.884
Barcelona	1.741	851	62.849	24.067	31,00	7.012	2.025	39,98	61,12	61,43	229
Alicante/Alacant	3.239	2.096	23.740	32.283	10,50	58.671	12.251	3,08	6,87	7,48	1.008
Málaga	7.018	1.912	23.360	24.605	5,37	29.832	7.165	5,16	10,54	11,72	1.272
Valencia/València	2.802	762	14.863	10.440	7,10	11.133	2.408	7,33	18,79	19,86	257
Granada	7.262	984	16.067	2.780	2,29	5.044	1.322	12,03	15,87	23,68	305
Sevilla	4.687	674	14.542	3.912	3,44	5.055	1.555	11,77	23,32	24,07	262
Castellón/Castelló	987	145	13.823	3.912	15,67	12.235	2.356	4,68	9,69	10,63	151
Lleida	2.251	89	8.707	391	3,89	1.827	377	16,07	23,75	29,00	68
Toledo	422	26	7.249	630	17,59	727	201	34,97	64,51	64,85	32
Cádiz	2.221	232	6.297	970	2,96	3.161	901	7,40	16,04	20,48	181
Araba/Álava	489	37	4.037	1.215	10,00	874	242	19,37	51,63	52,01	41
Lugo	313	24	4.160	697	14,45	1.005	278	15,58	23,57	23,67	32
Coruña, A	1.008	87	3.677	313	3,64	952	307	13,46	27,92	26,63	84

¹ Provinces belonging to uniprovincial Autonomous Communities have not been included because they are reflected in previous tables.

4. Travellers, overnight stays, capacity, occupancy, total number of staff from tourist areas with greater number of overnight stays

Tourist Areas	Travellers		Overnight stays			Capacity		Level of occupancy			Employed personnel
	Residents in Spain	Residents abroad	Residents in Spain	Residents abroad	Average stay	Estimated bed-places	Estimated holiday dwelling	Per bed-places	Per Holiday dwelling	Per Holiday dwelling at weekend	
Tenerife	7.827	9.399	20.266	85.657	6,15	24.444	7.359	13,95	19,90	22,50	1.522
Gran Canaria	3.974	7.023	18.577	79.836	8,95	22.161	7.238	14,30	22,91	25,06	1.357
Costa Barcelona 2016	844	340	54.868	19.843	31,00	4.853	1.489	49,66	67,77	67,52	127
Costa Blanca	3.172	2.049	22.909	31.750	10,47	56.388	11.801	3,13	6,91	7,53	964
Lanzarote	1.973	3.980	12.206	38.700	8,55	18.702	5.824	8,77	14,66	16,25	824
Costa del Sol (Málaga)	5.190	1.765	20.293	24.368	6,42	28.249	6.656	5,10	10,69	11,60	1.153
Fuerteventura	1.024	1.641	5.714	16.934	8,50	6.848	2.235	10,64	15,93	17,56	284
Costa de Castellón	593	145	12.407	3.912	22,12	11.585	2.204	4,54	9,45	9,91	124
Barcelona	712	503	6.119	4.207	8,50	1.726	392	19,27	48,59	48,80	75
Costa Cálida (Murcia)	794	183	8.132	1.987	10,35	5.585	1.356	5,84	14,12	14,42	119

5. Travellers, overnight stays, capacity, occupancy, total number of staff from tourist sites with greater number at overnights stays

Tourist sites	Travellers		Overnight stays			Capacity		Level of occupancy			Employed personnel
	Residents in Spain	Residents abroad	Residents in Spain	Residents abroad	Average stay	Estimated bed-places	Estimated holiday dwelling	Per bed-places	Per Holiday dwelling	Per Holiday dwelling at weekend	
S. Bartolomé de Tirajana	2.687	5.295	15.050	66.621	10,23	16.167	5.392	16,27	25,86	28,55	1.004
Madrid	7.316	1.825	37.222	18.397	6,08	8.512	3.238	21,08	31,37	32,32	263
Adeje	3.180	4.484	7.128	30.597	4,92	7.057	2.006	17,22	30,48	34,12	403
Tías	1.557	3.116	8.390	28.286	7,85	12.405	4.094	9,53	14,45	15,84	454
Arona	1.095	2.759	4.741	23.210	7,25	11.380	3.537	7,92	11,57	13,19	694
San Miguel de Abona	684	1.013	1.250	20.927	13,07	1.465	326	48,83	40,04	44,97	121
Marbella	1.089	1.271	3.759	12.680	6,97	6.654	1.445	7,87	15,74	16,60	289
Valencia	2.241	589	9.213	5.642	5,25	4.484	1.003	10,69	28,28	30,14	172
Puerto de la Cruz	2.738	795	6.835	7.783	4,14	2.698	1.086	17,42	25,35	29,19	225
Sevilla	3.660	564	10.292	2.495	3,03	4.161	1.199	9,91	19,22	21,14	237

6. Travellers and overnight stays by countries of residence

Countries	Travellers		Overnight stays	
	Total	%	Total	%
TOTAL	109.649	100,00	755.137	100,00
Residents in Spain	75.045	68,44	380.237	50,35
Residents abroad	34.604	31,56	374.900	49,65
Total residents abroad	34.604	100,00	374.900	100,00
Total residents in EU (excluding Spain)	23.921	69,13	242.393	64,66
- Germany	6.323	18,27	83.296	22,22
- Austria	460	1,33	4.272	1,14
- Belgium	1.601	4,63	18.678	4,98
- Denmark	325	0,94	4.697	1,25
- Finland	282	0,81	3.022	0,81
- France	4.314	12,47	33.803	9,02
- Greece	16	0,04	378	0,10
- Ireland	1.590	4,60	15.163	4,04
- Italy	1.774	5,13	18.538	4,94
- Luxembourg	102	0,29	1.053	0,28
- Netherlands	982	2,84	12.497	3,33
- Poland	1.195	3,45	9.043	2,41
- Portugal	723	2,09	5.657	1,51
- Czech Republic	610	1,76	5.217	1,39
- Sweden	1.559	4,51	12.315	3,28
- Other EU countries	2.065	5,97	14.764	3,94
Norway	531	1,53	4.990	1,33
United Kingdom	4.043	11,68	63.190	16,86
Russia	524	1,51	4.158	1,11
Switzerland	902	2,61	11.008	2,94
Other european countries	840	2,43	7.918	2,11
United States of America	460	1,33	3.019	0,81
Rest of America	1.470	4,25	19.342	5,16
African countries	767	2,22	5.608	1,50
Other countries	1.147	3,31	13.273	3,54

**Tourist Accommodation Occupancy Survey
Campsite Occupancy Survey (COS)**

January 2021

Provisional data

3rd March 2021

1. Travellers, overnight stays and average stay by category of establishment

Category	Travellers			Overnight stays			Average stay
	Total	Residents in Spain	Residents abroad	Total	Residents in Spain	Residents abroad	
TOTAL	47.480	33.518	13.962	552.883	151.530	401.354	11,64
Luxury and first-class	14.178	9.732	4.447	211.383	59.435	151.948	14,91
Second-class	31.148	22.256	8.891	318.908	85.698	233.210	10,24
Third-class	2.154	1.530	624	22.592	6.397	16.195	10,49
Annual rate	-67,34	-56,64	-79,49	-53,50	-35,72	-57,90	42,38
Cumulative annual rate	-67,34	-56,64	-79,49	-53,50	-35,72	-57,90	42,38

2. Open establishments, capacity, occupancy and number of staff by category of establishments

Category	Estimated open establishments	Capacity		Occupied pitches	Occupancy rate per pitch	Weekend occupancy rate	Employed personnel
		Estimated bedplaces	Estimated pitches				
TOTAL	350	218.201	69.660	683.025	31,63	30,87	2.128
Luxury and first-class	90	92.146	28.569	253.719	28,65	28,69	915
Second-class	210	113.878	37.046	388.677	33,84	32,52	1.081
Third-class	50	12.177	4.045	40.629	32,40	30,61	132
Annual rate	-18,69	-15,39	-14,85	-32,76	-21,03	-22,99	-33,01
Cumulative annual rate	-18,69	-15,39	-14,85	-32,76	-21,03	-22,99	-33,01

3. Travellers, overnight stays and average stay by Autonomous Cities and Communities

Autonomous cities and communities	Travellers			Overnight stays			Average stay
	Total	Residents in Spain	Residents abroad	Total	Residents in Spain	Residents abroad	
TOTAL	47.480	33.518	13.962	552.883	151.530	401.354	11,64
Andalucía	9.834	5.111	4.724	112.264	26.071	86.193	11,42
Aragón	336	236	101	3.702	3.143	559	11,01
Asturias, Principado de ¹	-	-	-	-	-	-	-
Balears, Illes ¹	-	-	-	-	-	-	-
Canarias	735	664	71	5.703	1.605	4.098	7,76
Cantabria ¹	-	-	-	-	-	-	-
Castilla y León	131	56	75	212	108	105	1,62
Castilla - La Mancha	81	81	0	209	209	0	2,58
Cataluña	10.738	10.037	701	33.330	29.190	4.139	3,10
Comunitat Valenciana	17.118	10.701	6.417	330.520	67.327	263.193	19,31
Extremadura	196	129	67	372	261	111	1,90
Galicia	30	30	0	66	66	0	2,20
Madrid, Comunidad de	4.992	4.901	91	14.455	14.076	379	2,90
Murcia, Región de	2.489	867	1.621	47.159	4.993	42.166	18,95
Navarra, Comunidad Foral de	304	304	0	1.305	1.305	0	4,29
País Vasco	411	316	95	2.253	1.843	410	5,48
Rioja, La ¹	-	-	-	-	-	-	-
Ceuta	-	-	-	-	-	-	-
Melilla	-	-	-	-	-	-	-

¹ The size of the sample in these communities does not facilitate the INE the broken down results, with the objective of maintaining statistical secrecy. Nevertheless, the data corresponding to these communities are included in the national total.

4. Open establishments, capacity, occupancy and number of staff by autonomous cities and communities

Autonomous cities and communities	Estimated open establishments	Capacity		Occupied pitches	Occupancy rate per pitch	Weekend occupancy rate	Employed personnel
		Estimated bedplaces	Estimated pitches				
TOTAL	350	218.201	69.660	683.025	31,63	30,87	2.128
Andalucía	84	48.035	15.359	116.512	24,47	24,18	481
Aragón	25	9.154	2.951	19.251	21,04	20,99	87
Asturias, Principado de	-	-	-	-	-	-	-
Balears, Illes ¹	-	-	-	-	-	-	-
Canarias ¹	5	3.554	1.455	6.250	13,86	16,94	25
Cantabria	-	-	-	-	-	-	-
Castilla y León	7	3.449	1.183	6.920	18,87	22,41	24
Castilla - La Mancha	6	2.240	690	4.024	18,82	22,41	21
Cataluña	50	33.131	10.874	92.938	27,57	25,94	289
Comunitat Valenciana	106	69.332	21.516	278.001	41,68	41,18	735
Extremadura	5	2.148	641	3.180	16,00	13,50	18
Galicia	9	2.449	694	25	0,12	0,21	17
Madrid, Comunidad de	16	15.945	5.488	71.523	42,04	40,38	175
Murcia, Región de	16	14.560	4.797	31.570	21,23	21,16	157
Navarra, Comunidad Foral de	6	2.697	801	11.174	45,02	40,76	23
País Vasco	7	3.801	1.153	10.080	28,20	30,59	29
Rioja, La ¹	-	-	-	-	-	-	-
Ceuta	-	-	-	-	-	-	-
Melilla	-	-	-	-	-	-	-

¹ The size of the sample in these communities does not facilitate the INE the broken down results, with the objective of maintaining statistical secrecy. Nevertheless, the data corresponding to these communities are included in the national total.

5. Travellers and overnight stays, average stay, capacity, occupancy and number of staff by provinces with the greatest number of overnight stays¹

Provinces	Travellers		Overnight stays		Average stay	Estimated open establishments	Estimated pitches	Occupancy rate per pitch	Employed personnel
	Residents in Spain	Residents abroad	Residents in Spain	Residents abroad					
	Alicante\Alacant	3.397	4.200	34.441					
Málaga	947	1.694	8.300	42.871	19,38	27	4.294	31,39	154
Castellón\Castelló	2.624	1.419	11.916	34.876	11,57	32	6.058	23,36	200
Valencia\València	4.679	798	20.970	17.325	6,99	27	5.039	37,22	148
Almería	336	1.538	6.695	27.616	18,31	22	2.886	28,07	98
Barcelona	1.715	200	10.425	563	5,74	13	4.856	19,05	120
Granada	840	416	3.487	6.207	7,72	15	2.305	18,06	62
Girona	3.394	373	6.763	2.798	2,54	18	2.296	35,34	76
Cádiz	510	558	1.648	7.396	8,47	10	2.549	19,47	92
Lleida	1.952	25	6.089	459	3,31	13	2.250	42,75	51
Huelva	1.808	517	4.397	2.103	2,80	5	1.956	27,33	43
Tarragona	2.976	103	5.913	320	2,02	7	1.473	20,36	42
Zaragoza	121	93	2.455	496	13,80	5	498	13,48	19
Córdoba	420	0	997	0	2,37	4	851	4,42	18
Huesca	65	8	406	63	6,42	14	1.838	28,76	48

¹ Provinces belonging to uniprovincial Autonomous Communities have not been included because they are reflected in previous tables.

6. Travellers, overnight stays, average stay, open establishments, capacity, occupancy and number of staff from tourist areas with the greatest number of overnight stays

Tourist areas	Travellers		Overnight stays		Average stay	Estimated open establishments	Estimated pitches	Occupancy rate per pitch	Employed personnel
	Residents in	Residents abroad	Residents in	Residents abroad					
	Spain		Spain						
Costa Blanca (Alicante)	2.416	3.442	17.698	186.003	31,00	38	7.989	61,58	326
Costa del Sol (Málaga)	674	1.552	7.285	41.615	21,97	16	3.495	35,45	129
Costa de Castellón	1.916	1.386	8.269	34.450	12,94	27	5.575	23,91	181
Costa Cálida (Murcia)	301	1.478	2.708	38.348	23,08	9	3.876	21,93	128
Costa de Almería	265	1.478	6.604	26.089	18,75	18	2.516	29,31	81
Costa Valencia (Valencia)	1.398	687	10.420	14.830	12,11	13	3.241	38,21	87
Pirineus	3.328	98	9.582	597	2,97	28	4.421	44,51	135
Costa de la Luz de Cádiz	458	553	1.557	7.317	8,77	8	2.218	17,60	83
Costa Tropical (Granada)	397	223	2.588	5.902	13,69	6	1.199	18,56	32
Costa Barcelona 2016	847	127	7.594	425	8,23	4	3.512	8,70	67
Costa Brava	2.614	373	5.012	2.798	2,62	9	1.289	29,41	42
Costa de la Luz de Huelva	1.808	517	4.397	2.103	2,80	5	1.956	27,33	43
Costa Daurada	2.907	101	5.568	257	1,94	5	1.220	20,00	38
Parque Natural Los Alcornocales	145	167	409	2.700	9,96	4	749	23,85	32
Parque Natural Alt Pirineu	633	25	1.703	360	3,14	4	768	30,70	10

7. Travellers, overnight stays, average stay, open establishments, capacity, occupancy and number of staff from tourist sites with the greatest number at overnights stays

Tourist sites	Travellers		Overnight stays		Average stay	Estimated open establishments	Estimated pitches	Occupancy rate per pitch	Employed personnel
	Residents in	Residents abroad	Residents in	Residents abroad					
	Spain		Spain						
Benidorm	527	1.495	4.772	106.877	31,00	9	3.869	74,85	120
Marbella	191	777	3.527	18.085	22,33	3	1.313	38,97	50
Cartagena	12	148	653	18.954	31,00	3	2.555	13,23	61
Mazarrón	119	620	1.193	15.557	22,67	3	882	40,69	39
Vélez-Málaga	186	201	2.169	9.965	31,00	4	879	32,84	39
Oliva	131	260	3.094	8.813	30,45	5	1.267	17,24	50
Calp	73	572	780	10.839	18,01	5	485	60,88	22
Villajoyosa	398	150	2.230	6.653	16,21	3	369	46,68	16
Campello, El	82	264	1.987	6.740	25,22	5	375	51,37	23
Benicasim	63	266	1.442	5.939	22,43	4	881	22,18	45
Níjar	112	630	2.148	4.045	8,35	4	572	17,11	19
Peníscola	77	233	756	5.287	19,49	6	1.061	11,09	20

8. Travellers and overnight stays by countries of residence

Countries	Travellers		Overnight stays	
	Total	%	Total	%
TOTAL	47.480	100,00	552.883	100,00
Residents in Spain	33.518	70,59	151.530	27,41
Residents abroad	13.962	29,41	401.354	72,59
TOTAL residents abroad	13.962	100,00	401.354	100,00
TOTAL residents in EU (excluding Spain)	10.451	74,85	228.841	57,02
- Germany	4.322	30,96	99.616	24,82
- Austria	72	0,51	2.768	0,69
- Belgium	1.044	7,48	19.777	4,93
- Denmark	157	1,13	3.054	0,76
- Finland	18	0,13	1.945	0,48
- France	2.057	14,73	35.782	8,92
- Greece	0	0,00	0	0,00
- Ireland	296	2,12	4.581	1,14
- Italy	270	1,93	2.055	0,51
- Luxembourg	59	0,42	1.573	0,39
- Netherlands	1.391	9,96	41.747	10,40
- Poland	231	1,66	653	0,16
- Portugal	131	0,94	681	0,17
- Czech Republic	89	0,64	3.072	0,77
- Sweden	205	1,47	10.220	2,55
- Other EU countries	106	0,76	1.317	0,33
Norway	82	0,59	5.308	1,32
United Kingdom	2.296	16,44	152.338	37,96
Russia	-	-	-	-
Switzerland	778	5,57	11.093	2,76
Other European countries	46	0,33	759	0,19
United States of America	130	0,93	511	0,13
Rest of America	-	-	-	-
African countries	120	0,86	405	0,10
Other countries	53	0,38	1.450	0,36

**Tourist accommodation occupancy survey
(Rural tourist accommodation)**

January 2021

Provisional data

3th March 2021

1. Number of travellers, overnight stays and average stay by Autonomous City and Community

Autonomous Communities	Number of travellers			Number of overnight stays			Average stay
	Total	Residents In Spain	Residents abroad	Total	Residents In Spain	Residents abroad	
TOTAL	32.649	29.896	2.753	111.434	91.593	19.842	3,41
Andalucía	2.761	2.518	244	11.375	7.973	3.402	4,12
Aragón	781	773	7	3.746	3.672	73	4,80
Asturias, Principado de	263	253	10	2.004	1.876	128	7,63
Balears, Illes	1.624	1.187	437	5.046	2.486	2.560	3,11
Canarias	2.466	1.448	1.018	12.410	5.323	7.086	5,03
Cantabria	1.152	1.072	80	2.543	2.338	205	2,21
Castilla y León	3.396	3.290	106	13.004	12.348	657	3,83
Castilla-La Mancha	907	793	114	9.032	7.185	1.847	9,96
Cataluña	3.235	3.235	0	11.138	11.138	0	3,44
Comunitat Valenciana	3.516	3.497	19	9.342	9.287	55	2,66
Extremadura	1.825	1.781	44	5.130	4.951	179	2,81
Galicia	610	606	4	1.274	1.266	8	2,09
Madrid, Comunidad de	6.519	6.061	458	11.342	10.546	796	1,74
Murcia, Región de	240	224	16	528	477	50	2,20
Navarra, Comunidad Foral de	1.964	1.875	89	7.952	6.008	1.943	4,05
País Vasco	1.235	1.132	102	5.124	4.278	846	4,15
Rioja, La	156	152	5	445	440	5	2,84
Ceuta	-	-	-	-	-	-	-
Melilla	-	-	-	-	-	-	-
Annual rate	-79,62	-78,79	-85,70	-69,54	-68,33	-74,11	49,44
Cumulative annual rate	-79,62	-78,79	-85,70	-69,54	-68,33	-74,11	49,44

2. Open rural establishments, bed-places, occupancy rates and employed personnel by Autonomous City and Community

Autonomous Communities	Estimated open rural establishments	Estimated bed-places	Occupancy rate			Employed personnel
			Of bed-places	Of bed-places	Of bedrooms	
			at weekend			
TOTAL	11.593	104.851	3,43	4,92	5,67	15.253
Andalucía	1.900	15.469	2,37	3,77	4,90	2.424
Aragón	800	6.311	1,91	2,79	3,62	884
Asturias, Principado de	224	2.128	3,03	2,89	6,21	294
Balears, Illes	129	2.269	7,17	9,42	12,88	339
Canarias	491	3.005	13,28	16,51	21,34	585
Cantabria	304	4.452	1,84	3,04	2,63	405
Castilla y León	2.567	21.240	1,97	2,63	3,99	3.248
Castilla-La Mancha	1.216	10.354	2,81	3,06	4,31	1.471
Cataluña	1.232	11.040	3,25	5,66	4,66	1.619
Comunitat Valenciana	543	4.821	6,25	10,30	11,59	846
Extremadura	563	6.567	2,52	3,36	4,07	773
Galicia	251	3.135	1,31	2,03	2,94	380
Madrid, Comunidad de	181	2.799	13,06	23,34	15,82	497
Murcia, Región de	106	1.517	1,12	2,46	1,66	180
Navarra, Comunidad Foral de	677	5.302	4,84	6,91	6,49	837
País Vasco	327	3.629	4,55	4,17	8,19	387
Rioja, La	80	812	1,77	0,81	3,77	86
Ceuta	-	-	-	-	-	-
Melilla	-	-	-	-	-	-
Annual rate	-25,56	-27,40	-58,01	-69,14	-47,83	-29,71
Cumulative annual rate	-25,56	-27,40	-58,01	-69,14	-47,83	-29,71

3. Number of travellers, overnight stays and average stay in Provinces with the greatest number of overnight stays¹

Provinces	Number of travellers			Number of overnight stays			Average stay
	Total	Residents In Spain	Residents abroad	Total	Residents In Spain	Residents abroad	
St Cruz de Tenerife	1.762	1.025	738	9.847	4.072	5.774	5,59
Málaga	923	840	83	5.749	2.877	2.873	6,23
Girona	1.114	1.114	0	4.564	4.564	0	4,10
Castellón\Castelló	1.611	1.611	0	4.516	4.516	0	2,80
Cáceres	1.463	1.426	37	4.147	3.981	166	2,84
Salamanca	757	737	20	3.500	3.444	56	4,62
Gipúzkoa	758	683	75	3.188	2.482	706	4,21
Lleida	740	740	0	3.070	3.070	0	4,15
Alicante\Alacant	1.019	1.006	13	2.641	2.598	43	2,59
Cuenca	48	34	14	2.631	914	1.718	31,00
Barcelona	1.181	1.181	0	2.572	2.572	0	2,18
Palmas, Las	704	424	280	2.563	1.251	1.312	3,64
Albacete	83	83	0	2.448	2.448	0	29,65
Valencia\València	885	879	6	2.185	2.174	12	2,47
León	672	672	0	2.124	2.124	0	3,16

¹ Provinces belonging to uniprovincial Autonomous Communities have not been included because they are reflected in previous tables.

4. Open rural establishments, bed-places, occupancy rates and employed personnel in Provinces with the highest number of overnight stays¹

Provinces	Estimated open rural establishments	Estimated bed-places	Occupancy rate			Employed personnel
			Of bed-places	Of bed-places at weekend	Of bedrooms	
St Cruz de Tenerife	416	2.347	13,48	16,43	22,25	458
Málaga	1.174	8.035	2,31	3,45	5,44	1.460
Girona	351	3.783	3,89	6,55	5,98	460
Castellón\Castelló	253	2.042	7,13	10,20	13,95	341
Cáceres	432	5.097	2,62	3,78	4,05	610
Salamanca	404	2.930	3,85	5,38	6,62	531
Gipúzkoa	165	1.874	5,48	4,71	9,51	198
Lleida	342	2.646	3,74	6,57	4,70	475
Alicante\Alacant	141	1.204	7,08	12,91	12,55	218
Cuenca	206	2.120	4,00	4,80	4,48	256
Barcelona	351	2.867	2,89	4,66	4,24	474
Palmas, Las	75	658	12,54	16,78	18,05	127
Albacete	553	3.499	2,26	2,44	4,90	628
Valencia\València	150	1.576	4,47	8,45	8,14	286
León	293	2.151	3,18	5,01	6,96	366

¹ Provinces belonging to uniprovincial Autonomous Communities have not been included because they are reflected in previous tables.

5. Number of travellers, overnight stays, average stay, capacity and occupancy rates in areas with the highest number of overnight stays

Areas	Number of travellers		Number of overnight stays			Capacity		Occupancy rate		
	Residents In Spain	Residents abroad	Residents In Spain	Residents abroad	Average stay	Estimated open rural establish.	Estimated bed-places	Of bed-places	Of bed-places at weekend	Of bedrooms
Pirineo Navarro	1.802	80	5.654	1.897	4,01	574	4.436	5,49	8,16	7,30
Isla de La Palma	193	375	1.578	3.259	8,51	229	978	15,85	17,04	27,79
Pirineus	1.271	0	4.458	0	3,51	473	4.039	3,56	5,18	5,32
Isla de Mallorca	797	362	1.896	2.426	3,73	115	2.024	6,89	8,88	13,09
P.Natural Sierras de Tejeda, Almijara y Alhama	175	50	877	3.207	18,11	375	2.581	5,10	6,12	14,22
Costa Brava	709	0	3.446	0	4,86	218	2.189	5,08	8,90	7,49
Parque Nacional Sierra de Guadarrama	1.659	369	2.683	619	1,63	71	907	11,72	20,27	12,92
Isla de Tenerife	692	262	1.644	1.203	2,98	88	838	10,95	17,93	12,58
P.Natural de Corona Forestal	540	221	999	1.113	2,77	67	663	10,27	18,20	11,59
P.Nacional Taburiente	149	136	1.024	842	6,55	121	538	11,19	12,29	23,01
P.Nacional Garajonay	129	98	606	1.240	8,12	65	389	15,26	14,80	30,70
Isla de La Gomera	129	98	606	1.240	8,12	65	389	15,26	14,80	30,70
Extremadura Norte	978	0	1.799	0	1,84	275	3.283	1,77	2,80	2,65
P.Nacional Teide	288	213	526	1.075	3,19	59	597	8,64	15,12	9,38
Isla de Gran Canaria	335	123	1.011	563	3,44	56	429	11,82	16,60	18,20

6. Number of travellers, overnight stays, average stay, capacity, occupancy rates and employed personnel per rural house by Autonomous City and Community²

Autonomous Communities	Number of travellers		Number of overnight stays			Average stay	Capacity		Occupancy rate		Employed personnel
	Residents In Spain	Residents abroad	Residents In Spain	Residents abroad	Estimated open rural establish.		Estimated bed-places	Of bed-places	Of bed-places at weekend		
TOTAL	18.126	1.559	65.093	15.855	4,11	10.303	85.676	3,05	4,28	12.923	
Andalucía	2.502	223	7.945	3.358	4,15	1.895	15.308	2,38	3,77	2.413	
Aragón	619	7	3.228	73	5,27	677	5.176	2,06	3,16	750	
Asturias, Principado de	-	-	-	-	-	-	-	-	-	-	
Balears, Illes	589	263	1.437	1.511	3,46	61	988	9,63	9,92	117	
Canarias	656	759	3.808	6.361	7,19	472	2.463	13,27	14,36	518	
Cantabria	338	15	687	15	1,99	200	2.587	0,88	2,10	248	
Castilla y León	2.055	46	9.759	492	4,88	2.363	17.385	1,90	2,49	2.874	
Castilla-La Mancha	787	114	7.161	1.847	10,00	1.200	10.143	2,86	3,11	1.453	
Cataluña	3.235	0	11.138	0	3,44	1.232	11.040	3,25	5,66	1.619	
Comunitat Valenciana	3.490	19	9.280	38	2,66	540	4.783	6,28	10,37	843	
Extremadura	791	0	2.606	0	3,30	347	3.261	2,58	3,15	439	
Galicia	400	0	907	0	2,27	207	2.495	1,17	1,83	299	
Madrid, Comunidad de	850	0	1.606	16	1,91	63	711	7,36	14,20	94	
Murcia, Región de	114	4	321	14	2,85	99	1.323	0,82	2,21	161	
Navarra, Comunidad Foral de	894	68	2.153	1.859	4,17	556	4.453	2,91	4,02	658	
País Vasco	655	37	2.616	264	4,17	187	2.010	4,62	4,27	221	
Rioja, La	152	5	440	5	2,84	80	812	1,77	0,81	86	
Ceuta	-	-	-	-	-	-	-	-	-	-	
Melilla	-	-	-	-	-	-	-	-	-	-	

² To facilitate the comparability between data from different Autonomous Communities (and because of the different regulation and different characteristics), a group called rural house has been created, with those establishments with similar typology (location, capacity, etc...).

The variables included in the previous table have been estimated with that type of establishments.

9. Travellers and overnight stays by country of residence

Results by countries	Travellers		Overnight stays	
	Total	%	Total	%
TOTAL	32.649	100,00	111.434	100,00
Residentes en España	29.896	91,57	91.593	82,19
Residentes en el extranjero	2.753	8,43	19.842	17,81
TOTAL residentes en el extranjero	2.753	100,00	19.842	100,00
TOTAL residentes en UE (sin España)	1.665	60,47	11.703	58,98
- Alemania	686	24,93	5.794	29,20
- Bélgica	110	4,01	355	1,79
- Francia	401	14,58	1.178	5,94
- Italia	95	3,44	617	3,11
- Países Bajos	53	1,94	315	1,59
- Portugal	149	5,40	2.433	12,26
Reino Unido	259	9,39	5.397	27,20
Suiza	40	1,45	232	1,17
Resto de Europa	304	11,04	1.565	7,89
Estados Unidos	19	0,71	100	0,50
Resto del mundo	636	23,12	1.856	9,35

RTOS (TABLES ANNEX) - January 2021. Provisional data (4/4)

**Tourist Accommodation Occupancy Survey
Hostels Occupancy Survey (HOS)**

January 2021

Provisional data

3th March 2021

1. Travellers, overnight stays and average stay by type of establishment

Type	Travellers			Overnight stays			Average stay
	Total	Residents in Spain	Residents abroad	Total	Residents in Spain	Residents abroad	
TOTAL	4.705	2.743	1.962	25.571	16.031	9.539	5,44
REAJ	4.320	2.519	1.801	24.707	15.642	9.065	5,72
Hostel for pilgrims	39	14	25	39	14	25	1,00
Tourist hostel	345	210	135	825	375	450	2,39
Annual rate	-89,41	-90,16	-88,16	-79,54	-78,60	-80,97	93,30
Cumulative annual rate	-89,41	-90,16	-88,16	-79,54	-78,60	-80,97	93,30

2. Open establishments, capacity, occupancy and employed personnel by type of establishment

Type	Capacity		Occupancy rate		Employed personnel
	Estimated open establishments	Estimated bed-places	Of bed-places	Of bed-places at weekend	
TOTAL	138	11.862	6,95	7,47	810
REAJ	96	10.291	7,74	8,33	712
Hostel for pilgrims	4	103	1,22	0,77	6
Tourist hostel	37	1.468	1,81	1,93	93
Annual rate	-49,88	-47,20	-61,24	-64,72	-51,28
Cumulative annual rate	-49,88	-47,20	-61,24	-64,72	-51,28

3. Travellers, overnight stays and average stay by Autonomous Cities and Communities

Autonomous cities and communities	Travellers			Overnight stays			Average stay
	Total	Residents in Spain	Residents abroad	Total	Residents in Spain	Residents abroad	
TOTAL	4.705	2.743	1.962	25.571	16.031	9.539	5,44
Andalucía	971	944	27	9.148	9.090	57	9,42
Aragón	-	-	-	-	-	-	-
Asturias, Principado de	-	-	-	-	-	-	-
Balears, Illes	-	-	-	-	-	-	-
Canarias	1.096	146	950	5.643	425	5.218	5,15
Cantabria	-	-	-	-	-	-	-
Castilla y León	99	85	14	314	276	38	3,17
Castilla - La Mancha	-	-	-	-	-	-	-
Cataluña	894	578	316	3.680	2.205	1.475	4,12
Comunitat Valenciana	483	336	146	3.458	2.449	1.009	7,16
Extremadura	-	-	-	-	-	-	-
Galicia	161	67	94	161	67	94	1,00
Madrid, Comunidad de	511	224	287	1.313	449	864	2,57
Murcia, Región de	-	-	-	-	-	-	-
Navarra, Comunidad Foral de	23	16	7	410	97	313	17,82
País Vasco	294	213	81	811	494	318	2,76
Rioja, La	30	5	25	35	10	25	1,17
Ceuta	-	-	-	-	-	-	-
Melilla	-	-	-	-	-	-	-
Annual rate	-89,41	-90,16	-88,16	-79,54	-78,60	-80,97	93,30
Cumulative annual rate	-89,41	-90,16	-88,16	-79,54	-78,60	-80,97	93,30

4. Open establishments, capacity, occupancy and number of staff by autonomous cities and communities

Autonomous cities and communities	Capacity		Occupancy rate		Employed personnel
	Estimated open establishments	Estimated bed-places	Of bed-places	Of bed-places at weekend	
TOTAL	138	11.862	6,95	7,47	810
Andalucía	14	1.957	15,08	15,54	158
Aragón	-	-	-	-	-
Asturias, Principado de	-	-	-	-	-
Balears, Illes	-	-	-	-	-
Canarias	19	479	37,97	39,26	42
Cantabria	-	-	-	-	-
Castilla y León	10	1.033	0,98	0,78	49
Castilla - La Mancha	-	-	-	-	-
Cataluña	11	1.216	9,76	10,14	71
Comunitat Valenciana	11	1.176	9,48	10,50	73
Extremadura	-	-	-	-	-
Galicia	13	773	0,67	1,04	31
Madrid, Comunidad de	4	482	8,78	12,78	146
Murcia, Región de	-	-	-	-	-
Navarra, Comunidad Foral de	6	263	5,02	4,80	16
País Vasco	13	1.579	1,66	2,07	85
Rioja, La	9	256	0,44	0,59	11
Ceuta	-	-	-	-	-
Melilla	-	-	-	-	-
Annual rate	-49,88	-47,20	-61,24	-64,72	-51,28
Cumulative annual rate	-49,88	-47,20	-61,24	-64,72	-51,28

5. Travellers and overnight stays by countries of residence

Countries	Travellers		Overnight stays		Average stay
	Total	%	Total	%	
TOTAL	4.705	100,00	25.571	100,00	5,44
Residents in Spain	2.743	58,30	16.031	62,69	5,84
Residents abroad	1.962	41,70	9.539	37,31	4,86
TOTAL residents abroad	1.962	100,00	9.539	100,00	4,86
TOTAL Residents in EU-27 (without Spain)	1.073	54,70	3.674	38,51	3,42
- Germany	270	13,76	918	9,62	3,40
- Belgium	70	3,56	211	2,21	3,02
- France	357	18,19	1.159	12,15	3,25
- Italy	141	7,21	553	5,80	3,91
- Netherlands	48	2,43	116	1,22	2,44
- Portugal	24	1,21	127	1,34	5,38
United Kingdom	147	7,48	575	6,03	3,92
Switzerland	37	1,87	160	1,67	4,35
Other European countries	303	15,44	1.276	13,37	4,21
United States of America	25	1,26	104	1,09	4,23
Other countries	541	27,59	4.341	45,51	8,02

HOS (TABLES ANNEX) - January 2021. Provisional data (3/3)

HOLIDAY DWELLING PRICE INDEX (HDPI)

January 2021

Provisional data

3rd March 2021

National general index and breakdown by rates

	Index	Annual variation rate
TOTAL	114,69	-15,40
Normal	107,76	-14,33
Weekend	109,99	-11,09
Tour-operators and travel agencies	119,42	-16,52

National general index and breakdown by modalities

	Index	Annual variation rate
TOTAL	114,69	-15,40
Studio	108,84	-15,42
Dwellings 2/4 bedplaces	113,38	-17,33
Dwellings 4/6 bedplaces	124,99	-8,34

HDPI (ANNEX OF TABLES) - January 2021. Provisional data

Tourist Campsite Price Index (TCSPI). 2002 Base

January 2021

Provisional data

3rd March 2021

National general index and breakdown by rates

	Index	Annual variation rate
TOTAL	156,06	-0,12
Normal rate	153,80	-0,76
Special rate for stays up to one month	135,84	3,56
Special rate for stays longer than one month	165,26	0,88
Bungalow rate ¹	104,36	-1,31

¹2014 Base

National general index and breakdown by categories

	Index	Annual variation rate
TOTAL	156,06	-0,12
Luxury and first	173,56	0,51
Second	144,35	-0,52
Third	158,63	-1,92

TCSPI (ANNEX OF TABLES) - January 2021. Provisional data

Rural Tourism Accommodation Price Index (RTAPI)

January 2021

Provisional data

3th March 2021

General Autonomous Cities and Communities and national indices

	Index	Annual variation rate
TOTAL	145,80	-0,70
Andalucía	150,34	0,78
Aragón	176,56	-0,75
Asturias, Principado de	157,87	-2,96
Balears, Illes	90,98	-8,30
Canarias	105,81	-4,68
Cantabria	194,14	1,68
Castilla y León	150,35	0,76
Castilla - La Mancha	138,01	0,15
Cataluña	171,98	-1,04
Comunitat Valenciana	151,27	-0,36
Extremadura	88,78	-0,96
Galicia	148,51	-1,07
Madrid, Comunidad de	152,18	5,58
Murcia, Región de	184,75	2,49
Navarra, Comunidad Foral de	199,75	4,04
País Vasco	177,04	-2,13
Rioja, La	184,56	5,66
Ceuta	-	-
Melilla	-	-

National general index and breakdown by rates

	Index	Annual variation rate
TOTAL	145,80	-0,70
Normal	143,18	-0,56
Weekend	149,47	-0,78

National general index and breakdown by rent modality

	Index	Annual variation rate
TOTAL	145,80	-0,70
Shared use (in case of per room rent modality)	119,96	-2,16
Full use (rent of entire dwelling)	157,87	-0,25