

1 December 2020

**Non-hotel Tourist Accommodation Occupancy Survey**  
October 2020. Provisional data

**Overnight stays in non-hotel tourist accommodation decreased by 66.7% in October, as compared to the same month of 2019**

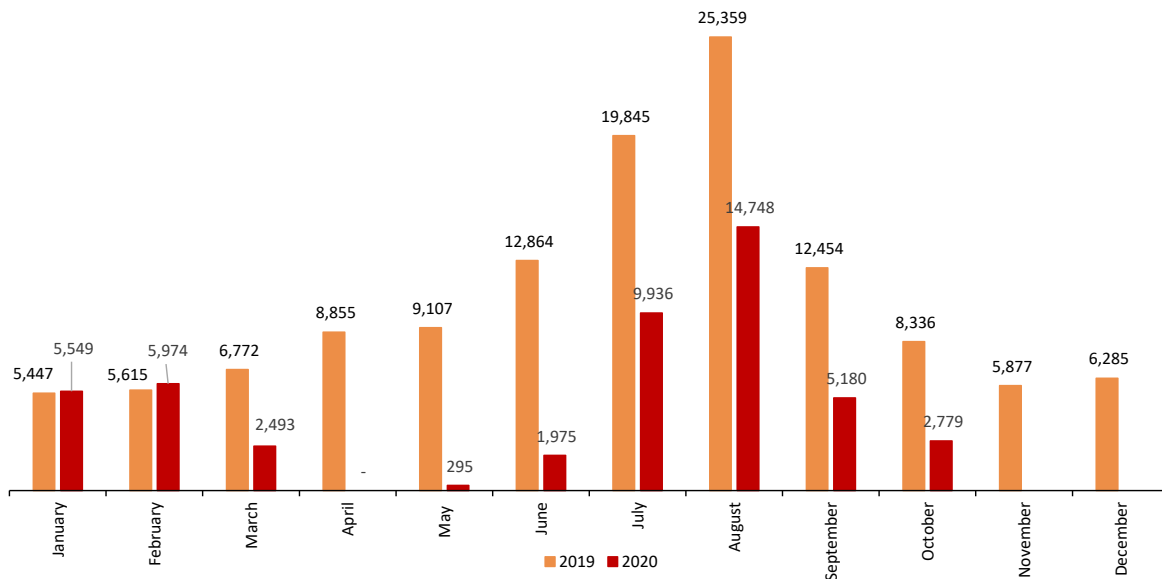
**In the first 10 months of the year, overnight stays decreased by 57.3% in these establishments**

**Main results**

- The number of non-hotel tourist lodgings open in October (tourist apartments, campsites, rural tourism accommodations and tourist hostels) increased compared to September, from 126,212 to 100,944. They represented 34.5% less than in October 2019.
- More than 720 thousand travellers stayed at one of these establishments. They made 2.7 million overnight stays, 66.7% less in the annual rate.
- Travellers who are residents of Spain represent 84.2% of the total in this type of accommodation (606 thousand, compared to 113 thousand non-residents), and this is also reflected in overnight stays (1.8 million, compared to 883 million).
- Campsites, especially those in the Mediterranean area, are the most visited establishments, with more than 131 thousand travelers. Benidorm and Malgrat de Mar are those that reported the highest campsite occupation rates, at 73.1% and 60.5%, respectively.
- Almost 1.1 million overnight stays were made in tourist apartments, 78.1% less than in October 2019. Of the overnight stays 62.5% corresponded to residents. The areas with the highest occupancy rate were the Coast of Barcelona (74.7%) and the Island of Fuerteventura (24.5%). On weekends, the busiest apartments were those on the Costa de Barcelona (75.5%).
- Rural tourism accommodates more than 161 thousand people, 92.7% of whom are residents in Spain. The highest weekend occupations were recorded in the Sierras de Cazorla Natural Park, Segura and las Villas (28.0%) and in the Sierra de Grazalema Natural Park (25.4%).
- There were 48.9 million overnight stays in non-hotel tourist accommodations during the first 10 months of 2020, 57.3% less than the same period for 2019. Of these, 30.8 million were made by residents (-34.5%) and 18.0 million by non-residents (-73.2%).

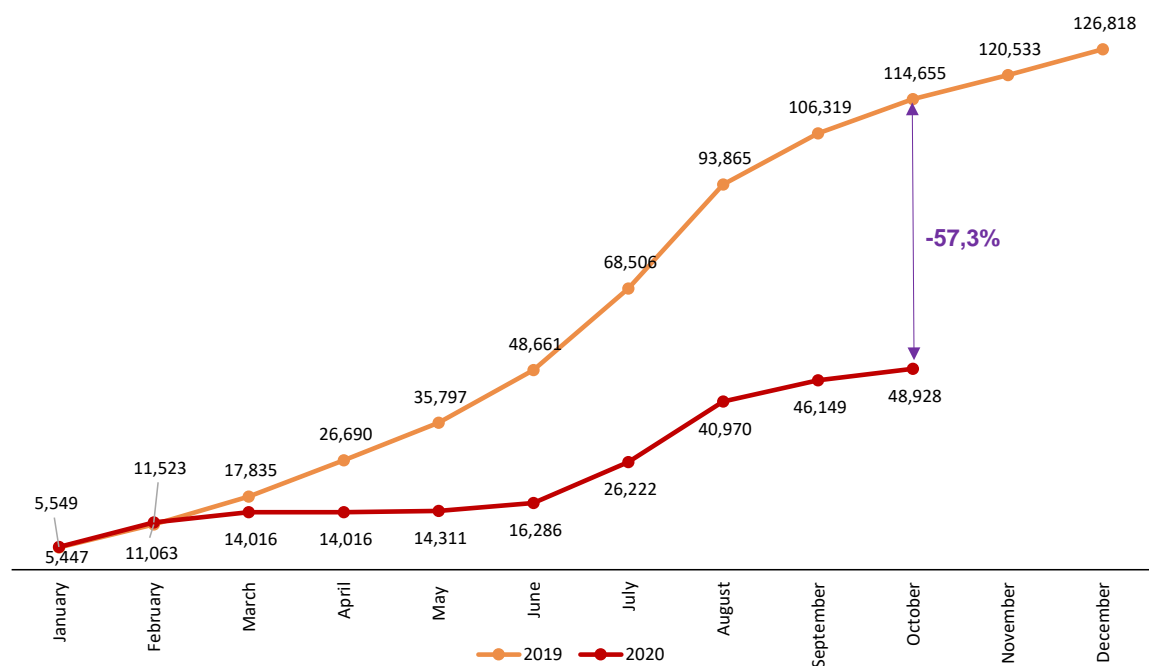
## Overnight stays in non-hotel accommodation monthly. Comparative 2019-2020

Thousands



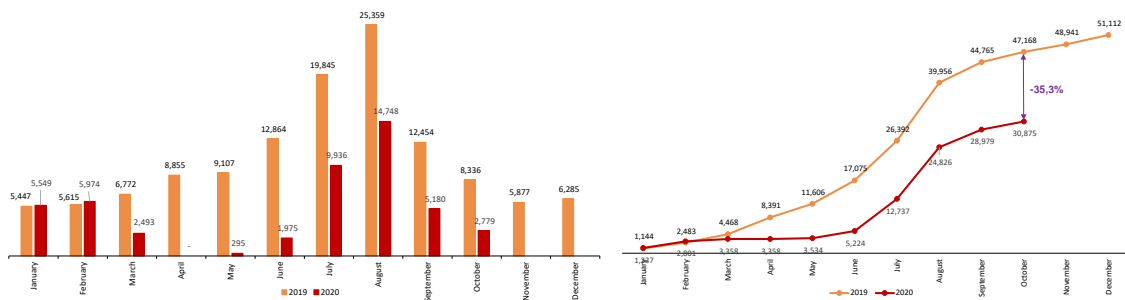
## Accumulated overnight stays in non-hotel accommodation. Comparative 2019-2020

Thousands



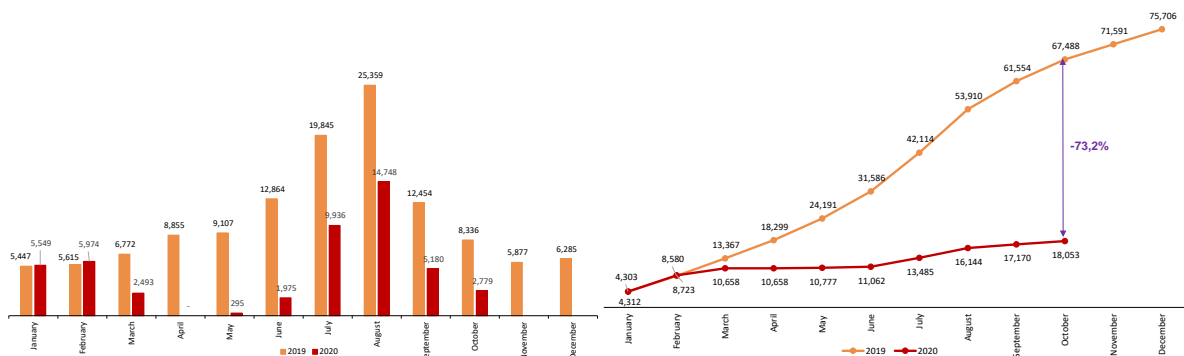
## Monthly and accumulated overnights of residents in Spain. Comparative 2019-2020

Thousands



## Monthly and accumulated overnights of non-residents in Spain. Comparative 2019-2020

Thousands



## Open establishments

In October, a total of 100,944 hotels were open in Spain, 34.5% less than in the same month of 2019. This represented 59.6% of the total directory of establishments for that month.

Type of accommodation	Number of open establishments according to the survey	Percentage of total establishments in the directory	Number of estimated places according to the survey	Percentage of total places in the directory
<b>TOTAL</b>	<b>100,944</b>	<b>59.6%</b>	<b>882,814</b>	<b>67.1%</b>
Holiday dwellings (*)	85,015	58.2%	339,048	61.7%
Campsites	588	68.5%	385,269	73.1%
Rural T.	15,207	69.2%	143,925	68.8%
Hostels	134	45.0%	14,572	48.2%
Annual rate	-34.5		-22.1	

(\*) Estimated number of apartments

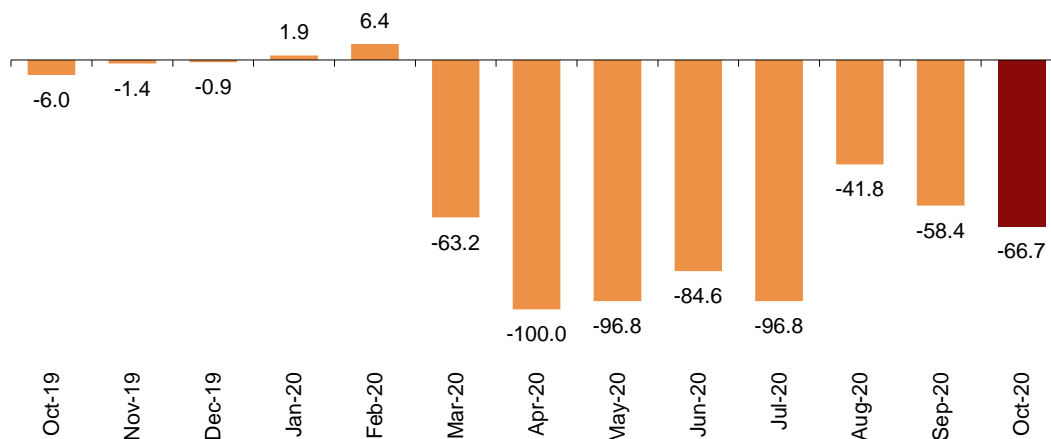
## Overnight stays

Overnight stays in hotel establishments exceeded 2.7 million in October, with a decrease of 66.7% compared to the 8.3 million for the same month of 2019.

By traveller origin, overnight stays by residents of Spain decreased by 21.1% in the annual rate, exceeding 1.8 million. In turn, overnight stays by non-residents fell by 85.1%, to 883 thousand.

### Annual variation rate for overnight stays

Percentage



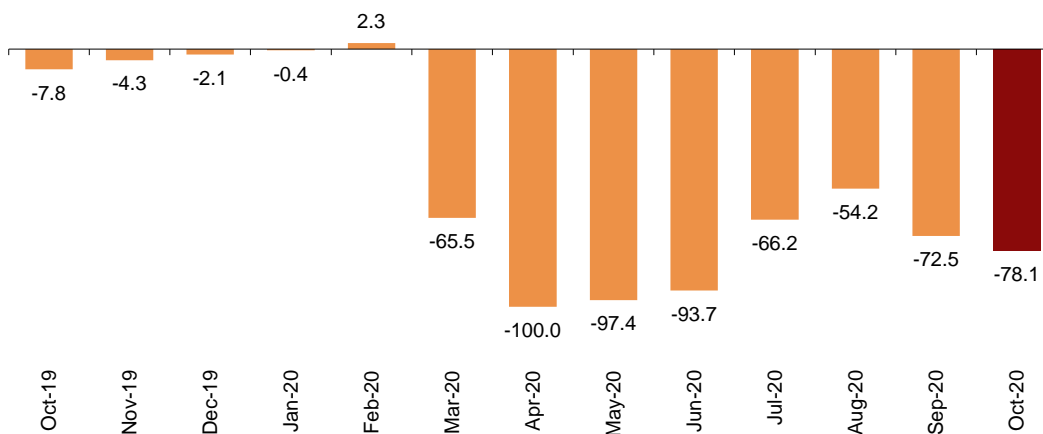
During the first 10 months of 2020, overnight stays decreased by 57.3% as compared with the same period of the previous year.

## Holiday Dwellings

Overnight stays in holiday dwellings decreased by 78.1% in October in the annual rate. Resident overnight stays decreased by 24.4% and non-resident overnight stays did so by 90.0%.

### Annual variation rate for overnight stays

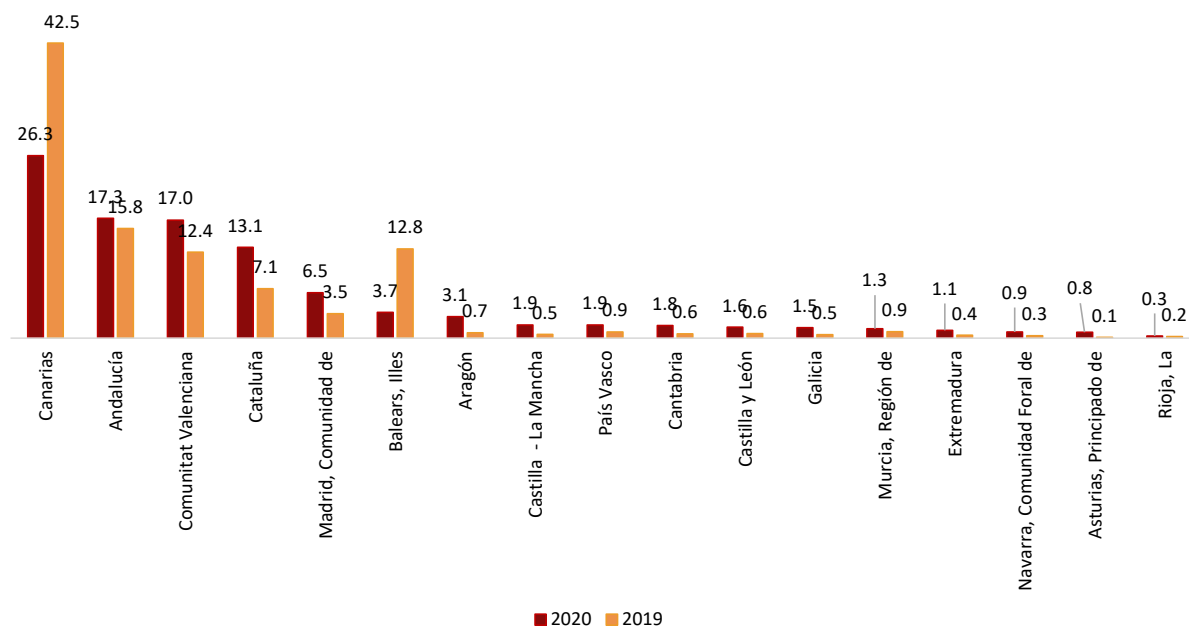
Percentage



Canarias, Andalucía, and Comunitat Valenciana were the main destinations of travellers in October, with annual rates in the number of overnight stays of -86.5%, -76.1% and -69.9% respectively.

## Distribution of total overnight stays. Comparative September 2019-2020

Percentage



By tourist areas, Costa de Barcelona was the preferred destination for tourist apartments, with 64,685 overnight stays and an occupancy rate of 74.7% for the apartments available.

The tourist sites with the greatest number of overnight stays in October were San Bartolomé de Tirajana and Arona.

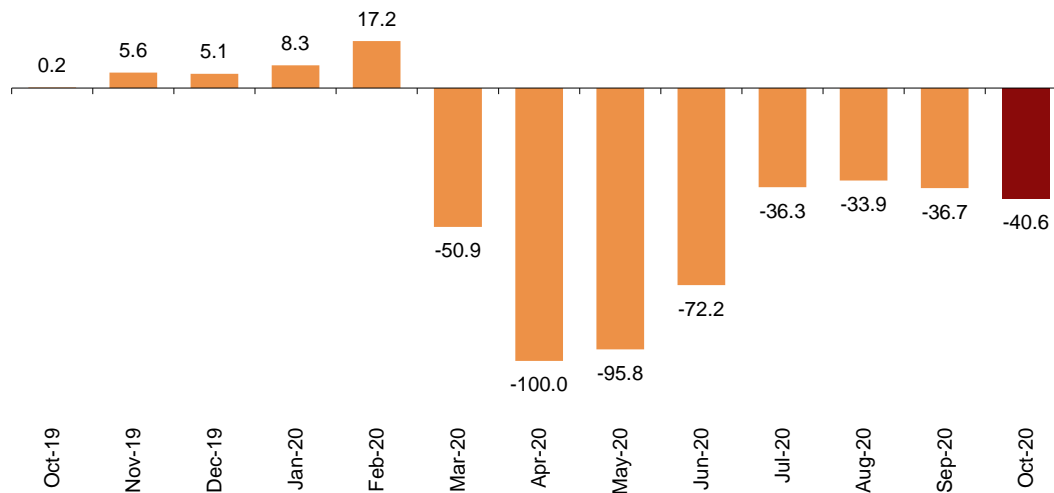
## Tourist Campsites

Campsites were the most visited non-hotel tourist establishments in October, with over 284 thousand travellers. Worth noting is Cataluña, which hosted 115 thousand travellers and represented 40.7% of the total.

Overnight stays at tourist campsites registered a decrease of 40.6% in October as compared with the same month of the previous year. Overnight stays by residents increased 4.5%, while those by non-residents decreased by 67.7%.

### Annual variation rate for overnight stays

Percentage



In October, 30.5% of the offered parcels were occupied, 17.2% more than in the same month of 2019. The weekend occupancy rate reached 31.6%, with a 19.9% annual decrease.

Comunitat Valenciana was the preferred destination for tourist campsites, with 429,903 overnight stays, representing an annual decrease of 40.8%. La Rioja achieved the highest occupancy rate, with 55.0% of the pitches offered.

By tourist areas, Costa Blanca was the preferred destination, with 241,360 overnight stays and an occupancy rate of 59.9% of the pitches offered.

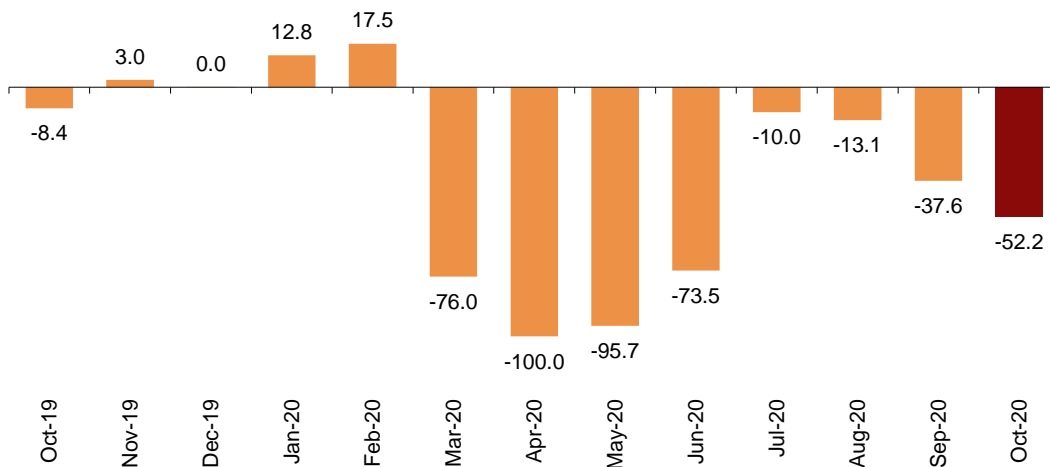
The tourist sites with the highest number of overnight stays were Benidorm, Blanes, and Mont-Roig Del Camp.

### Rural tourism accommodation

Overnight stays in rural tourism accommodation had an annual decrease of 52.2% in October. Resident overnight stays decreased by 37.0% and non-resident overnight stays did so by 85.1%.

### Annual variation rate for overnight stays

Percentage



In rural tourism accommodations, 8.9% of bed-places were occupied, 42.6% less than in October 2019. The weekend occupancy rate stood at 16.0%, with a decrease of 52.9%.

By Autonomous Community, Castilla y León was the preferred destination, with 53,012 overnight stays, 63.1% less than in October 2019. Illes Balears reached the highest occupancy rate, with 15.2% of the bed-places offered.

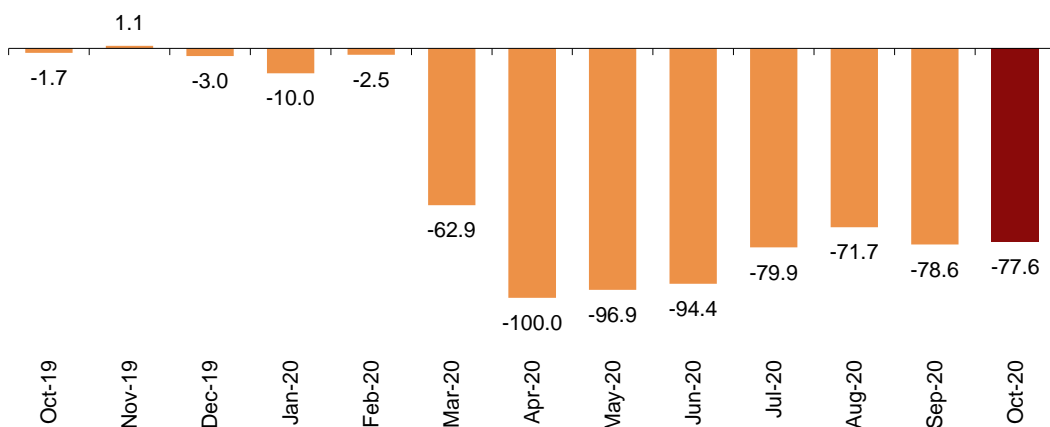
By tourist area, Pirineus was the main destination, with 16,775 overnight stays. The island of Menorca registered the highest occupancy rate, with 24.2% of the bed-places offered.

### Hostels

Overnight stays in hostels registered an annual decrease of 77.6% in October. Resident overnight stays decreased by 72.6% and non-resident overnight stays did so by 86.6%.

### Annual variation rate for overnight stays

Percentage



In hostels, 10.0% of the available bed-places were occupied, 61.5% less than in October 2019. The weekend occupancy rate reached 13.2%, with a 60.6% decrease.

By Autonomous Community, Cataluña was the preferred destination, with 15,583 overnight stays, 80.5% less than in October 2019. Canarias reached the highest occupancy rate, with 35.5% of the bed-places offered.

## Price indices

The Tourist Apartment Price Index (TAPI) decreased by 14.0% in October compared to the same month of 2019 and the Rural Tourism Accommodation Price Index (RTAPI) decreased by 2.5%.

On the other hand, the Tourist Campsite Price Index (TCPI) increased by 2.7%.

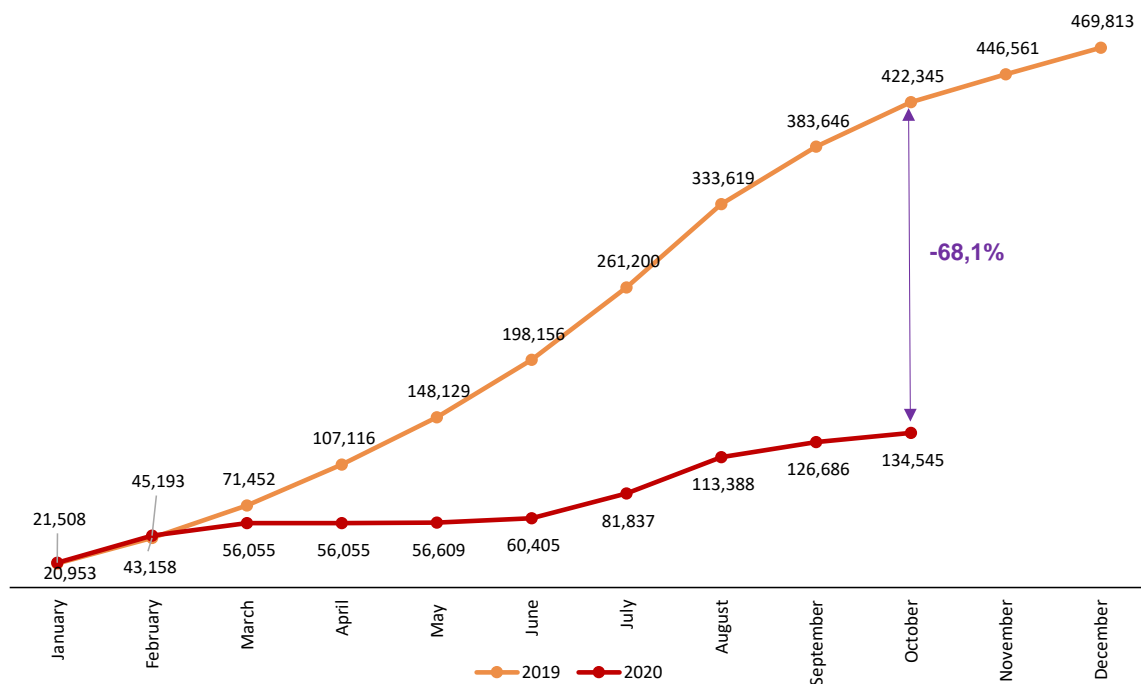
## Evolution of travellers and overnight stays in all Spanish collective tourist accommodation

In October, overnight stays in Spanish collective tourist accommodations (hotels<sup>1</sup>, holiday dwellings, tourist campsites, rural tourism accommodation and youth hostels) decreased by 79.7% in the annual rate.

In the first 10 months of the year, overnight stays in all tourist accommodations decreased by 68.1%.

### Accumulated overnight stays. Comparative 2019-2020

Thousands



<sup>1</sup> The press release corresponding to Hotel Tourism Short-Term Trends was published on the 24th of November.



## Revision and updating of data

Coinciding with today's publication, the INE has updated the data for October 2019 in the Holiday Dwelling Price Index (HDPI), the Tourist Campsite Price Index (TCPI) and the Rural Tourism Accommodation Price Index (RTAPI).

## Methodological note

The main objective of the Holiday Dwelling Occupancy Survey (HDOS) is to ascertain the behaviour of a series of variables that make it possible to describe the segment that occupies this type of accommodation within the tourist sector, both from the point of view of supply and demand.

The Holiday Dwelling Price Index (HDPI) is a statistical measure of the monthly evolution of the prices offered by holiday dwelling establishments to their clients.

**Type of operation:** monthly continuous survey.

**Population scope:** holiday apartment establishments and/or companies operating holiday apartments.

**Geographical scope:** the entire national territory, with the exception of Ceuta and Melilla, where there are no establishments of this type.

**Reference period of the results:** the month.

**Reference period for the information:** The consultation of basic data refers to a fortnight of the month, chosen randomly, in such way that the complete month is covered among all establishments.

**Type of sampling:** stratified sampling by province and establishment size, and stratified at island-size level for Canarias and Illes Balears.

**Collection method:** questionnaire filled in directly by the establishment.

For more information on these statistical operations, you can consult the [methodology and the standardised methodological report](#) for each operation in INEbase.

The main objective of the Campsite Occupancy Survey (COS) is to ascertain the behaviour of a series of variables that make it possible to describe the segment that this type of accommodation occupies within the tourist sector, from the viewpoint of both supply and demand.

The Tourist Campsite Price Index (TCPI) is a statistical measure of the monthly evolution of the prices offered by campsites to their clients.

**Type of operation:** monthly continuous survey.

**Population scope:** camping establishments.

**Geographical scope:** the entire national territory, with the exception of Ceuta and Melilla, where there are no establishments of this type.

**Reference period of the results:** the month.

**Reference period of the information:** seven consecutive days of each month, chosen randomly in such way that, between all the establishments, the entire month is covered.

**Sample size:** approximately 1200 establishments.

**Type of sampling:** comprehensive survey in all provinces.

**Collection method:** questionnaire filled in directly by the establishment.

For more information on these statistical operations, you can consult the [methodology and the standardised methodological report](#) for each operation in INEbase.

The main objective of the Rural Tourism Accommodation Occupancy Survey (RTAOS) is to ascertain the behaviour of a series of variables that make it possible to describe the fundamental characteristics of this type of accommodation within the tourist sector, both from the point of view of supply and demand.

The Rural Tourism Accommodation Price Index (RTAPI) is a statistical measure of the monthly evolution of the prices that entrepreneurs of this type of accommodation apply to their clients.

**Type of operation:** monthly continuous survey.

**Population scope:** rural tourism establishments registered as such in the corresponding register of each Autonomous Community.

**Geographical scope:** the entire national territory, with the exception of Ceuta and Melilla where there are no establishments of this type.

**Reference period of the results:** the month.

**Reference period for the information:** The consultation of basic data refers to all the days of the month.

**Type of sampling:** comprehensive survey in all provinces except those where the population size is large enough to take a sample.

**Collection method:** questionnaire filled in directly by the establishment.

For more information on these statistical operations, you can consult the [methodology and the standardised methodological report](#) for each operation in INEbase.

The main objective of the Hostels Occupancy Survey (HOS) is to ascertain the behaviour of a series of variables that make it possible to describe the fundamental characteristics of this type of accommodation within the tourist sector, both from the point of view of supply and demand.

For more information on this statistical operation, you can consult the [methodology and the standardised methodological report](#) in INEbase.

INE statistics are produced in accordance with the Code of Good Practice for European Statistics, which is the basis for the institution's quality policy and strategy. For more information see the section on Quality at INE and the Code of Best Practices on the INE website.

---

For further information see **INEbase:** [www.ine.es/en/](http://www.ine.es/en/) Twitter: [@es\\_ine](https://twitter.com/es_ine)

All press releases at: [www.ine.es/en/prensa/prensa\\_en.htm](http://www.ine.es/en/prensa/prensa_en.htm)

---

**Press Office:** Telephone numbers: (+34) 91 583 93 63 /94 08 – [gprensa@ine.es](mailto:gprensa@ine.es)

**Information Area:** Telephone number: (+34) 91 583 91 00 – [www.ine.es/infoine/?L=1](http://www.ine.es/infoine/?L=1)

---

## Tourist Accommodation Occupancy Survey (Holiday Dwellings)

October 2020

Provisional data

1st December 2020

### 1. Travellers, overnight stays and average stay by Autonomous Cities and Communities

Autonomous Cities and Communities	Travellers			Overnight stays			Average stay
	Total	Residents in Spain	Residents abroad	Total	Residents in Spain	Residents abroad	
<b>TOTAL</b>	261,120	197,154	63,966	1,169,766	731,395	438,370	4.48
Andalucía	62,568	50,952	11,615	201,796	137,210	64,586	3.23
Aragón	12,899	12,010	889	36,046	32,370	3,676	2.79
Asturias, Principado de	2,199	2,191	8	9,815	9,799	16	4.46
Balears, Illes	7,569	4,677	2,892	43,210	22,715	20,495	5.71
Canarias	70,430	38,768	31,662	307,652	129,804	177,848	4.37
Cantabria	7,056	6,780	276	20,907	19,342	1,565	2.96
Castilla y León	7,126	6,557	569	18,387	15,491	2,896	2.58
Castilla - La Mancha	5,994	5,883	110	22,215	21,330	885	3.71
Cataluña	23,454	19,041	4,414	152,858	111,898	40,960	6.52
Comunitat Valenciana	31,264	23,526	7,738	198,924	116,514	82,410	6.36
Extremadura	6,218	5,851	366	12,925	12,320	605	2.08
Galicia	5,586	5,299	287	17,300	14,878	2,422	3.10
Madrid, Comunidad de	7,555	6,055	1,500	76,454	47,489	28,964	10.12
Murcia, Región de	2,375	1,904	471	15,699	12,650	3,049	6.61
Navarra, Comunidad Foral de	2,916	2,496	419	10,096	7,977	2,119	3.46
País Vasco	4,686	3,991	695	21,873	16,102	5,771	4.67
Rioja, La	1,226	1,171	55	3,608	3,507	102	2.94
Ceuta	-	-	-	-	-	-	-
Melilla	-	-	-	-	-	-	-
Annual rate	-73.55	-36.40	-90.56	-78.09	-24.37	-89.98	-17.18
Cumulative annual rate	-64.84	-43.78	-77.90	-65.75	-41.38	-75.10	-2.58

### 2. Capacity, occupancy and number of staff by Autonomous Cities and Communities

Autonomous Cities and Communities	Capacity		Level of occupancy				Employed personnel
	Estimated bedplaces	Estimated Holiday dwelling	Per bedplaces	Per bedplaces at weekend	Per Holiday dwelling	Per Holiday dwelling at weekend	
<b>TOTAL</b>	339,048	85,015	11.11	13.91	19.48	23.10	15,068
Andalucía	60,495	14,930	10.73	14.69	17.95	23.11	3,025
Aragón	6,496	1,521	17.85	31.37	27.38	43.24	490
Asturias, Principado de	4,141	1,019	7.64	10.37	12.38	16.39	308
Balears, Illes	10,335	2,938	13.47	14.27	22.57	23.78	625
Canarias	76,680	23,890	12.92	15.13	18.66	21.45	4,712
Cantabria	4,083	1,036	16.51	22.83	25.85	33.97	333
Castilla y León	5,501	1,347	10.81	16.94	20.75	29.25	487
Castilla - La Mancha	4,938	1,200	14.51	22.97	26.63	38.16	386
Cataluña	35,698	8,059	13.78	16.88	25.44	29.52	930
Comunitat Valenciana	99,110	19,958	6.47	7.90	13.55	15.67	1,816
Extremadura	3,426	832	12.16	18.81	21.80	31.42	506
Galicia	4,141	1,156	13.46	16.35	25.12	28.94	262
Madrid, Comunidad de	8,601	3,312	28.67	28.79	36.88	36.41	333
Murcia, Región de	7,957	1,927	6.36	7.62	13.97	15.55	175
Navarra, Comunidad Foral de	1,805	481	18.01	22.06	39.55	44.44	328
País Vasco	4,129	1,065	17.07	20.97	37.08	40.53	257
Rioja, La	1,514	344	7.69	14.00	17.14	26.45	94
Ceuta	-	-	-	-	-	-	-
Melilla	-	-	-	-	-	-	-
Annual rate	-33.69	-37.17	-66.88	-63.00	-63.32	-60.09	-47.60
Cumulative annual rate	-41.97	-43.81	-40.80	-39.77	-36.84	-36.10	-49.83

### 3. Travellers, overnight stays, capacity, occupancy, total number of staff with greater number of overnight stays<sup>1</sup>

Provinces	Travellers		Overnight stays		Average stay	Capacity		Level of occupancy			Employed personnel
	Residents in Spain	Residents abroad	Residents in Spain	Residents abroad		Estimated bed-places	Estimated holiday dwelling	Per bed-places	Per Holiday dwelling	Per Holiday dwelling at weekend	
Palmas, Las	20,213	14,799	75,005	90,249	4.72	44,102	13,258	12.08	17.96	20.55	2,516
St Cruz de Tenerife	18,555	16,863	54,798	87,599	4.02	32,578	10,631	14.07	19.54	22.56	2,196
Alicante\Alacant	10,731	4,452	56,961	54,647	7.35	67,602	13,641	5.33	11.03	12.56	1,237
Barcelona	5,492	2,177	75,415	31,918	13.99	7,781	2,238	44.47	65.58	67.71	324
Málaga	19,264	7,606	52,049	46,607	3.67	37,056	8,578	8.59	15.08	18.25	1,681
Valencia\València	7,127	2,716	27,958	18,836	4.75	13,940	2,952	10.82	25.17	28.94	317
Castellón\Castelló	5,667	570	31,595	8,927	6.50	17,568	3,365	7.44	13.60	16.61	262
Sevilla	6,489	1,780	19,717	8,657	3.43	4,835	1,510	18.87	32.30	35.51	320
Granada	7,379	656	20,621	1,980	2.81	4,988	1,331	14.51	18.54	28.76	303
Tarragona	7,729	877	18,303	3,798	2.57	9,475	1,897	7.32	14.80	23.22	158
Girona	4,823	1,335	14,967	5,017	3.25	16,927	3,600	3.71	7.01	9.83	372
Huesca	6,336	305	17,223	957	2.74	3,650	818	16.05	23.59	40.49	238
Almería	3,758	596	11,637	3,959	3.58	4,800	1,228	10.45	18.29	21.63	214
Teruel	4,822	426	12,325	1,563	2.65	2,084	490	21.37	31.97	52.54	184
Jaén	5,559	34	13,627	102	2.45	2,136	544	20.63	25.15	43.04	125

<sup>1</sup> Provinces belonging to uniprovincial Autonomous Communities have not been included because they are reflected in previous tables.

### 4. Travellers, overnight stays, capacity, occupancy, total number of staff from tourist areas with greater number of overnight stays

Tourist Areas	Travellers		Overnight stays		Average stay	Capacity		Level of occupancy			Employed personnel
	Residents in Spain	Residents abroad	Residents in Spain	Residents abroad		Estimated bed-places	Estimated holiday dwelling	Per bed-places	Per Holiday dwelling	Per Holiday dwelling at weekend	
Isla de Tenerife	14,093	16,264	38,632	82,235	3.98	27,957	9,045	13.91	18.86	21.87	1,820
Costa Blanca	9,632	4,371	52,019	53,751	7.55	64,463	13,081	5.29	10.98	12.36	1,099
Costa Barcelona 2016	2,658	577	64,685	23,369	27.23	5,174	1,584	54.90	74.66	75.45	181
Costa del Sol (Málaga)	13,475	6,993	41,581	42,603	4.11	34,638	8,012	7.84	13.88	15.99	1,567
Gran Canaria	11,519	5,385	38,998	36,429	4.46	22,057	6,959	11.03	16.20	19.57	1,337
Isla de Lanzarote	4,721	6,632	20,426	37,856	5.13	15,299	4,237	12.27	17.63	18.91	798
Costa de Castellón	5,233	570	29,731	8,927	6.66	16,938	3,217	7.36	13.44	16.26	214
Isla de Fuerteventura	3,973	2,782	15,582	15,963	4.67	6,746	2,062	15.08	24.53	27.25	382
Isla de Mallorca	1,419	1,432	11,706	13,448	8.82	6,297	1,756	12.73	20.01	20.47	356
Costa Daurada	6,634	877	15,720	3,798	2.60	8,925	1,797	7.05	14.12	22.08	118

### 5. Travellers, overnight stays, capacity, occupancy, total number of staff from tourist sites with greater number at overnights stays

Tourist sites	Travellers		Overnight stays		Average stay	Capacity		Level of occupancy			Employed personnel
	Residents in Spain	Residents abroad	Residents in Spain	Residents abroad		Estimated bed-places	Estimated holiday dwelling	Per bed-places	Per Holiday dwelling	Per Holiday dwelling at weekend	
Madrid	4,446	1,424	41,816	28,517	11.98	7,728	3,028	29.35	36.16	35.26	261
San Bartolomé de Tirajana	9,406	2,883	32,264	21,732	4.39	15,028	4,886	11.58	16.62	20.98	982
Arona	4,518	6,291	13,094	33,246	4.29	12,808	4,060	11.66	15.28	18.28	929
Adeje	4,114	7,673	9,367	36,690	3.91	8,871	2,878	16.72	22.32	24.23	468
Tías	3,079	3,555	12,762	21,488	5.16	7,805	2,288	14.13	18.00	19.41	504
Benidorm	3,790	2,353	17,046	14,238	5.09	22,595	4,708	4.47	11.15	13.19	359
Valencia	5,707	1,850	16,474	9,840	3.48	4,374	970	19.38	42.89	50.82	226
Puerto de la Cruz	4,867	1,530	14,350	8,018	3.50	3,546	1,430	20.17	26.23	32.02	286
Dénia	1,859	311	10,175	12,157	10.29	6,752	1,362	10.67	23.97	25.47	106
Sevilla	4,888	1,674	13,566	6,172	3.01	3,547	1,074	17.90	27.79	32.88	281

## 6. Travellers and overnight stays by countries of residence

Countries	Travellers		Overnight stays	
	Total	%	Total	%
TOTAL	261,120	100.00	1,169,766	100.00
Residents in Spain	197,154	75.50	731,395	62.52
Residents abroad	63,966	24.50	438,370	37.48
Total residents abroad	63,966	100.00	438,370	100.00
Total residents in E.U (excluding Spain)	36,276	56.71	242,356	55.29
- Germany	4,574	7.15	38,653	8.82
- Austria	293	0.46	2,445	0.56
- Bélgica	1,866	2.92	18,105	4.13
- Dinamarca	399	0.62	2,559	0.58
- Finlandia	461	0.72	2,887	0.66
- France	13,486	21.08	71,559	16.32
- Greece	284	0.44	1,474	0.34
- Ireland	1,997	3.12	11,403	2.60
- Italy	2,804	4.38	23,148	5.28
- Luxembourg	144	0.23	1,831	0.42
- Netherlands	2,486	3.89	15,653	3.57
- Poland	1,543	2.41	11,626	2.65
- Portugal	1,329	2.08	9,061	2.07
- United Kingdom	695	1.09	3,368	0.77
- Czech Republic	1,902	2.97	14,690	3.35
- Sweden	2,012	3.15	13,893	3.17
- Other EU countries	233	0.36	2,356	0.54
Norway	21,043	32.90	123,810	28.24
United Kingdom	375	0.59	3,374	0.77
Switzerland	525	0.82	4,524	1.03
Other european countries	843	1.32	8,177	1.87
United States of America	427	0.67	4,567	1.04
Rest of America	2,089	3.27	27,865	6.36
African countries	959	1.50	8,231	1.88
Other countries	1,197	1.87	13,110	2.99

## Tourist Accommodation Occupancy Survey Campsite Occupancy Survey (COS)

October 2020

Provisional data

1st December 2020

### 1. Travellers, overnight stays and average stay by category of establishment

Category	Travellers			Overnight stays			Average stay
	Total	Residents in Spain	Residents abroad	Total	Residents in Spain	Residents abroad	
TOTAL	284,533	249,056	35,477	1,165,395	769,150	396,246	4.10
Luxury and first-class	106,705	92,955	13,750	452,904	309,062	143,842	4.24
Second-class	143,476	124,909	18,566	613,675	374,665	239,010	4.28
Third-class	34,352	31,192	3,160	98,816	85,423	13,393	2.88
Annual rate	-33.78	-4.32	-79.05	-40.59	4.46	-67.66	-10.28
Cumulative annual rate	-44.44	-27.51	-77.90	-46.30	-27.83	-67.61	-3.36

### 2. Open establishments, capacity, occupancy and number of staff by category of establishments

Category	Estimated open establishments	Capacity		Occupied pitches	Occupancy rate per pitch	Weekend occupancy rate	Employed personnel
		Estimated bedplaces	Estimated pitches				
TOTAL	588	385,269	118,489	1,119,357	30.47	31.61	4,372
Luxury and first-class	146	160,467	48,414	395,488	26.35	27.09	1,939
Second-class	347	193,310	60,395	616,556	32.93	34.49	2,097
Third-class	95	31,492	9,681	107,313	35.76	35.39	336
Annual rate	-10.58	-9.34	-9.42	-25.00	-17.21	-19.87	-25.20
Cumulative annual rate	-33.97	-34.22	-34.06	-40.76	-10.37	-11.22	-36.44

### 3. Travellers, overnight stays and average stay by Autonomous Cities and Communities

Autonomous cities and communities	Travellers			Overnight stays			Average stay
	Total	Residents in Spain	Residents abroad	Total	Residents in Spain	Residents abroad	
TOTAL	284,533	249,056	35,477	1,165,395	769,150	396,246	4.10
Andalucía	42,045	34,236	7,809	145,375	92,026	53,349	3.46
Aragón	14,762	12,513	2,249	37,492	33,631	3,861	2.54
Asturias, Principado de	3,867	3,792	75	14,478	14,358	120	3.74
Balears, Illes <sup>1</sup>	-	-	-	-	-	-	-
Canarias <sup>1</sup>	2,149	2,119	30	7,518	4,146	3,373	3.50
Cantabria	1,009	931	78	8,670	8,331	339	8.59
Castilla y León	4,124	2,937	1,188	10,193	8,421	1,773	2.47
Castilla - La Mancha	5,643	5,571	72	14,792	14,631	161	2.62
Cataluña	115,921	107,856	8,065	342,650	304,642	38,007	2.96
Comunitat Valenciana	56,107	46,360	9,747	429,903	172,599	257,304	7.66
Extremadura	3,260	2,433	827	6,628	4,941	1,687	2.03
Galicia	977	874	103	1,863	1,636	226	1.91
Madrid, Comunidad de	12,300	11,959	341	46,927	46,046	881	3.82
Murcia, Región de	9,212	6,960	2,252	51,489	21,177	30,312	5.59
Navarra, Comunidad Foral de	4,852	4,468	383	21,408	20,457	951	4.41
País Vasco	5,256	3,254	2,003	14,807	11,691	3,116	2.82
Rioja, La	2,970	2,767	203	10,616	10,235	381	3.57
Ceuta	-	-	-	-	-	-	-
Melilla	-	-	-	-	-	-	-

<sup>1</sup> The size of the sample in these communities does not facilitate the INE the broken down results, with the objective of maintaining statistical secrecy. Nevertheless, the data corresponding to these communities are included in the national total.

## 4. Open establishments, capacity, occupancy and number of staff by autonomous cities and communities

Autonomous cities and communities	Estimated open establishments	Capacity Estimated bedplaces	Estimated pitches	Occupied pitches	Occupancy rate per pitch	Weekend occupancy rate	Employed personnel
TOTAL	588	385,269	118,489	1,119,357	30.47	31.61	4,372
Andalucía	107	62,664	19,732	123,726	20.23	23.41	734
Aragón	51	20,122	6,249	47,044	24.28	26.65	251
Asturias, Principado de	10	5,714	1,622	10,978	21.83	29.32	41
Balears, Illes <sup>1</sup>	-	-	-	-	-	-	-
Canarias <sup>1</sup>	5	3,615	1,470	7,615	16.71	25.85	20
Cantabria	13	9,189	3,221	43,003	43.06	32.54	51
Castilla y León	26	12,390	3,661	19,855	17.50	20.28	73
Castilla - La Mancha	19	7,714	2,101	14,632	22.46	28.67	98
Cataluña	132	117,520	34,252	317,972	29.95	30.88	1,240
Comunitat Valenciana	114	74,178	23,155	312,300	43.51	45.31	1,059
Extremadura	11	3,663	1,288	6,526	16.35	25.60	50
Galicia	21	7,411	2,614	6,640	8.19	8.53	64
Madrid, Comunidad de	19	17,304	5,922	79,094	43.08	42.26	211
Murcia, Región de	17	14,981	4,921	36,332	23.81	23.06	196
Navarra, Comunidad Foral de	20	12,884	3,382	33,862	32.30	32.48	124
País Vasco	15	8,366	2,570	22,416	28.14	19.94	108
Rioja, La	6	7,252	2,175	37,049	54.95	57.17	51
Ceuta	-	-	-	-	-	-	-
Melilla	-	-	-	-	-	-	-

<sup>1</sup> The size of the sample in these communities does not facilitate the INE the broken down results, with the objective of maintaining statistical secrecy. Nevertheless, the data corresponding to these communities are included in the national total.

## 5. Travellers and overnight stays, average stay, capacity, occupancy and number of staff by provinces with the greatest number of overnight stays<sup>1</sup>

Provinces	Travellers		Overnight stays		Average stay	Estimated open establishments	Estimated pitches	Occupancy rate per pitch	Employed personnel
	Residents in Spain	Residents abroad	Residents in Spain	Residents abroad					
Alicante\Alacant	22,453	5,495	85,912	216,096	10.81	47	10,944	54.92	632
Tarragona	33,906	3,262	107,517	14,776	3.29	29	12,052	22.47	451
Barcelona	38,878	1,354	99,769	10,700	2.75	31	8,478	40.30	320
Girona	24,975	3,006	71,485	11,285	2.96	46	9,536	24.69	357
Valencia\València	13,910	1,826	51,347	14,943	4.21	30	5,567	39.47	183
Castellón\Castelló	9,998	2,426	35,340	26,265	4.96	37	6,644	28.10	244
Málaga	6,721	1,820	18,719	30,877	5.81	28	4,489	25.88	180
Lleida	10,097	443	25,871	1,246	2.57	26	4,186	42.46	112
Cádiz	6,038	2,481	17,750	7,127	2.92	13	3,115	20.41	141
Huesca	8,277	1,182	20,904	2,362	2.46	34	4,648	26.78	192
Huelva	7,493	539	19,426	1,616	2.62	10	4,524	17.22	100
Almería	3,901	1,860	11,309	9,466	3.61	20	2,635	21.99	112
Granada	3,400	600	7,912	3,340	2.81	19	2,527	17.52	80
Teruel	3,763	341	8,682	812	2.31	10	894	17.61	34
Jaén	4,048	150	8,614	329	2.13	8	1,128	17.85	35

<sup>1</sup> Provinces belonging to uniprovincial Autonomous Communities have not been included because they are reflected in previous tables.

## 6. Travellers, overnight stays, average stay, open establishments, capacity, occupancy and number of staff from tourist areas with the greatest number of overnight stays

Tourist areas	Travellers		Overnight stays		Average stay	Estimated open establishments	Estimated pitches	Occupancy rate per pitch	Employed personnel
	Residents in	Residents abroad	Residents in	Residents abroad					
	Spain		Spain						
Costa Blanca	16,891	4,904	53,574	187,786	11.07	38	8,515	59.94	572
Costa Daurada	30,698	2,284	98,421	11,288	3.33	23	11,183	21.28	414
Costa Barcelona	26,419	1,149	74,321	10,514	3.08	17	6,431	37.72	226
Pirineus	26,889	846	62,064	1,265	2.28	47	6,714	44.92	222
Costa Brava	16,085	2,740	50,673	11,005	3.28	29	7,751	20.40	299
Costa de Castellón	7,606	2,317	25,575	25,277	5.12	30	5,987	28.01	215
Costa del Sol	4,590	1,415	14,131	28,685	7.13	14	3,315	29.82	131
Costa Valencia	4,839	1,198	25,872	13,046	6.45	14	3,573	39.77	105
Costa Cálida	1,726	1,787	8,791	28,299	10.56	9	3,860	21.28	150
Pirineo Aragonés	8,184	896	20,786	1,831	2.49	30	4,369	25.17	183
Costa de la Luz (Cádiz)	4,291	1,749	13,975	6,018	3.31	10	2,549	18.75	123
Costa de la Luz (Huelva)	6,528	539	17,979	1,616	2.77	8	4,387	16.46	94
Costa de Almería	3,060	1,782	9,913	8,216	3.74	16	2,272	20.31	84
Pirineo Navarro	2,941	154	14,664	507	4.90	13	1,759	30.19	78
Costa Verde	3,549	75	13,919	120	3.87	7	1,383	23.73	35

## 7. Travellers, overnight stays, average stay, open establishments, capacity, occupancy and number of staff from tourist sites with the greatest number at overnights stays

Tourist sites	Travellers		Overnight stays		Average stay	Estimated open establishments	Estimated pitches	Occupancy rate per pitch	Employed personnel
	Residents in	Residents abroad	Residents in	Residents abroad					
	Spain		Spain						
Benidorm	781	1,414	7,614	111,932	31.00	9	3,869	73.13	142
Blanes	5,784	141	27,430	768	4.76	7	2,162	29.20	89
Mont-Roig Del Camp	3,377	311	23,594	4,236	7.55	4	3,416	14.54	71
Malgrat De Mar	4,328	0	23,595	0	5.45	3	660	60.45	39
Marbella	2,634	412	7,880	15,021	7.52	3	1,313	32.91	59
Oliva	1,382	816	11,409	9,700	9.60	6	1,434	21.82	63
Mazarrón	870	492	4,561	7,266	8.68	3	882	30.58	41
Peníscola	1,024	1,068	3,569	7,231	5.16	7	1,262	16.88	35
Calp	466	921	2,040	8,675	7.73	5	485	51.43	23
Campello, El	791	355	3,868	5,772	8.41	5	375	51.91	26
Níjar	2,412	1,091	6,823	2,668	2.71	4	572	21.01	33
Vélez-Málaga	872	558	2,346	6,447	6.15	4	879	30.29	49



## 8. Travellers and overnight stays by countries of residence

Countries	Travellers		Overnight stays	
	Total	%	Total	%
TOTAL	284,533	100.00	1,165,395	100.00
Residents in Spain	249,056	87.53	769,150	66.00
Residents abroad	35,477	12.47	396,246	34.00
TOTAL residents abroad	35,477	100.00	396,246	100.00
TOTAL residents in EU (excluding Spain)	24,241	68.33	196,723	49.65
- Germany	5,677	16.00	52,706	13.30
- Austria	225	0.63	1,340	0.34
- Belgium	1,450	4.09	18,875	4.76
- Denmark	260	0.73	2,455	0.62
- Finland	129	0.36	1,858	0.47
- France	10,443	29.43	55,485	14.00
- Greece	55	0.16	125	0.03
- Ireland	443	1.25	4,650	1.17
- Italy	678	1.91	2,677	0.68
- Luxembourg	107	0.30	813	0.21
- Netherlands	3,083	8.69	42,914	10.83
- Poland	111	0.31	503	0.13
- Portugal	510	1.44	1,659	0.42
- Czech Republic	141	0.40	469	0.12
- Sweden	526	1.48	8,359	2.11
- Other EU countries	404	1.14	1,836	0.46
Norway	112	0.31	3,736	0.94
United Kingdom	8,240	23.23	183,077	46.20
Russia	8	0.02	47	0.01
Switzerland	1,006	2.83	6,760	1.71
Other European countries	607	1.71	1,330	0.34
United States of America	139	0.39	445	0.11
Rest of America	218	0.61	1,091	0.28
African countries	25	0.07	164	0.04
Other countries	882	2.49	2,872	0.72

<sup>1</sup> Non-significant data

## Tourist accommodation occupancy survey (Rural tourist accommodation)

October 2020

Provisional data

1st December 2020

### 1. Number of travellers, overnight stays and average stay by Autonomous City and Community

Autonomous Communities	Number of travellers			Number of overnight stays			Average stay
	Total	Residents In Spain	Residents abroad	Total	Residents In Spain	Residents abroad	
<b>TOTAL</b>	161,806	150,045	11,762	398,606	359,428	39,179	2.46
Andalucía	14,080	12,982	1,098	38,996	31,063	7,933	2.77
Aragón	11,181	10,700	482	33,397	32,160	1,237	2.99
Asturias, Principado de	15,629	15,165	464	39,598	37,881	1,717	2.53
Balears, Illes	7,165	4,120	3,044	18,680	8,292	10,389	2.61
Canarias	3,687	3,058	629	12,238	9,011	3,228	3.32
Cantabria	11,144	9,746	1,399	22,797	20,310	2,487	2.05
Castilla y León	23,088	21,860	1,227	53,012	50,268	2,744	2.30
Castilla-La Mancha	11,944	11,549	395	32,351	30,036	2,315	2.71
Cataluña	18,961	18,226	735	42,380	41,036	1,344	2.24
Comunitat Valenciana	12,778	12,307	472	29,489	28,171	1,318	2.31
Extremadura	8,529	7,901	628	19,815	17,922	1,893	2.32
Galicia	6,122	5,892	231	10,922	10,511	411	1.78
Madrid, Comunidad de	5,370	5,027	343	9,564	9,093	472	1.78
Murcia, Región de	1,947	1,921	26	3,974	3,938	36	2.04
Navarra, Comunidad Foral de	4,547	4,445	102	16,728	16,508	220	3.68
País Vasco	4,586	4,111	475	12,214	10,800	1,414	2.66
Rioja, La	1,048	1,036	12	2,451	2,429	22	2.34
Ceuta	-	-	-	-	-	-	-
Melilla	-	-	-	-	-	-	-
Annual rate	-56.74	-48.52	-85.75	-52.18	-36.97	-85.12	10.54
Cumulative annual rate	-48.52	-39.89	-79.14	-41.90	-27.14	-77.31	12.84

### 2. Open rural establishments, bed-places, occupancy rates and employed personnel by Autonomous City and Community

Autonomous Communities	Estimated open rural establishments	Estimated bed-places	Occupancy rate			Employed personnel
			Of bed-places	Of bed-places at weekend	Of bedrooms	
<b>TOTAL</b>	15,207	143,925	8.92	16.00	12.81	21,141
Andalucía	2,232	18,206	6.91	13.24	10.84	2,898
Aragón	1,041	8,340	12.86	21.40	16.82	1,230
Asturias, Principado de	1,169	11,895	10.73	16.66	13.37	1,649
Balears, Illes	227	3,955	15.22	20.08	18.87	870
Canarias	521	3,187	12.38	17.09	19.54	661
Cantabria	394	5,739	12.80	25.55	15.78	655
Castilla y León	3,126	27,618	6.19	11.41	9.33	4,088
Castilla-La Mancha	1,586	13,404	7.78	14.09	12.02	1,996
Cataluña	1,760	15,668	8.72	18.18	13.28	2,340
Comunitat Valenciana	709	8,245	11.53	21.66	19.67	1,092
Extremadura	597	7,280	8.78	15.92	12.72	909
Galicia	387	5,078	6.92	13.38	8.96	664
Madrid, Comunidad de	214	3,354	9.19	19.75	14.05	541
Murcia, Región de	149	2,245	5.71	12.94	8.04	244
Navarra, Comunidad Foral de	664	4,952	10.88	17.86	16.07	795
País Vasco	339	3,794	10.36	15.37	13.56	403
Rioja, La	93	963	8.19	11.48	9.98	106
Ceuta	-	-	-	-	-	-
Melilla	-	-	-	-	-	-
Annual rate	-14.61	-16.52	-42.63	-52.93	-34.37	-20.67
Cumulative annual rate	-33.77	-34.96	-10.84	-17.69	-5.19	-31.41

### 3. Number of travellers, overnight stays and average stay in Provinces with the greatest number of overnight stays<sup>1</sup>

Provinces	Number of travellers			Number of overnight stays			Average stay
	Total	Residents In Spain	Residents abroad	Total	Residents In Spain	Residents abroad	
Girona	9,824	9,275	550	20,189	19,189	1,000	2.05
Málaga	4,787	4,232	556	16,007	10,708	5,299	3.34
Cáceres	6,039	5,563	477	14,672	13,182	1,490	2.43
Huesca	5,590	5,279	311	14,595	13,952	643	2.61
Albacete	4,038	4,031	7	11,972	11,956	16	2.96
Castellón\Castelló	4,730	4,718	12	11,426	11,381	45	2.42
Teruel	3,484	3,480	4	9,921	9,876	44	2.85
St Cruz de Tenerife	2,464	2,060	404	9,241	6,671	2,570	3.75
Valencia\València	3,863	3,780	83	9,121	8,577	545	2.36
Alicante\Alacant	4,185	3,809	376	8,942	8,214	728	2.14
Zaragoza	2,107	1,941	166	8,882	8,331	550	4.22
Barcelona	3,900	3,885	15	8,772	8,742	30	2.25
Soria	3,879	3,879	0	8,444	8,444	0	2.18
Gipúzkoa	2,709	2,339	370	7,849	6,665	1,183	2.90
Lleida	2,766	2,640	125	7,574	7,378	196	2.74

<sup>1</sup> Provinces belonging to uniprovincial Autonomous Communities have not been included because they are reflected in previous tables.

### 4. Open rural establishments, bed-places, occupancy rates and employed personnel in Provinces with the highest number of overnight stays<sup>1</sup>

Provinces	Estimated open rural establishments	Estimated bed-places	Occupancy rate			Employed personnel
			Of bed-places	Of bed-places at weekend	Of bedrooms	
Girona	600	6,215	10.46	22.36	16.59	728
Málaga	1,256	8,407	6.14	10.92	11.55	1,645
Cáceres	458	5,614	8.43	15.00	12.55	694
Huesca	556	4,343	10.81	18.83	14.36	650
Albacete	747	4,838	7.98	17.00	14.40	907
Castellón\Castelló	311	3,168	11.62	21.12	17.77	446
Teruel	287	2,304	13.78	24.83	17.32	362
St Cruz de Tenerife	447	2,499	11.93	15.31	19.03	497
Valencia\València	223	3,082	9.54	19.04	19.42	365
Alicante\Alacant	174	1,995	14.45	26.55	23.25	281
Zaragoza	197	1,692	16.90	23.33	22.41	218
Barcelona	469	3,895	7.26	17.35	10.62	670
Soria	273	2,699	10.08	19.92	14.37	347
Gipúzkoa	164	1,903	13.26	17.45	17.38	191
Lleida	449	3,278	7.45	15.16	11.69	664

<sup>1</sup> Provinces belonging to uniprovincial Autonomous Communities have not been included because they are reflected in previous tables.

## 5. Number of travellers, overnight stays, average stay, capacity and occupancy rates in areas with the highest number of overnight stays

Areas	Number of travellers		Number of overnight stays		Average stay	Capacity		Occupancy rate		
	Residents In Spain	Residents abroad	Residents In Spain	Residents abroad		Estimated open rural establish.	Estimated bed-places	Of bed-places	Of bed-places at weekend	Of bedrooms
Pirineus	6,848	79	16,617	158	2.42	665	5,522	9.78	22.90	14.08
Pirineo Navarro	4,156	98	14,644	207	3.49	551	4,027	11.87	19.93	17.72
Pirineo Aragónés	5,174	373	13,660	790	2.61	505	4,002	11.61	20.20	15.25
Isla de Mallorca	2,842	2,484	5,668	8,700	2.70	191	3,337	13.88	19.38	17.51
P.Nacional Picos de Europa	4,716	123	12,123	730	2.66	291	2,692	15.40	23.37	18.43
Costa Verde (Asturias)	4,726	243	12,010	792	2.58	439	5,158	7.99	13.80	10.03
Costa Brava	5,493	511	11,095	923	2.00	398	4,002	9.69	18.17	17.06
Extremadura Norte	4,275	160	9,880	381	2.31	297	3,719	8.89	16.52	12.66
Parque Natural de Los Calares del Mundo y de la Sima	1,262	7	5,598	16	4.42	249	1,453	12.46	20.47	24.20
P.Natural Sierras de Cazorla, Segura	1,475	113	3,460	1,626	3.20	100	1,136	14.43	27.97	18.36
P.Natural Sierras de Tejeda, Almijá	1,035	138	2,277	2,760	4.29	337	2,065	7.86	11.34	17.91
Costa del Sol (Málaga)	251	232	1,566	2,281	7.96	212	1,411	8.79	8.49	16.43
Isla de Menorca	1,162	470	2,461	1,318	2.32	31	503	24.15	24.75	27.50
Parque Nacional Sierra de Guadarrama	2,499	285	3,365	361	1.34	98	1,388	8.66	17.59	10.55
P.Natural Sierra de Grazalema	1,365	62	3,545	173	2.60	137	1,040	11.50	25.35	21.41

## 6. Number of travellers, overnight stays, average stay, capacity, occupancy rates and employed personnel per rural house by Autonomous City and Community<sup>2</sup>

Autonomous Communities	Number of travellers		Number of overnight stays		Average stay	Capacity		Occupancy rate		Employed personnel
	Residents In Spain	Residents abroad	Residents In Spain	Residents abroad		Estimated open rural establish.	Estimated bed-places	Of bed-places	Of bed-places at weekend	
TOTAL	101,652	5,917	257,287	24,002	2.61	13,156	109,516	8.27	15.20	16,826
Andalucía	12,866	1,069	30,780	7,893	2.78	2,229	18,078	6.90	13.22	2,889
Aragón	9,022	423	27,211	1,078	3.00	879	6,892	13.18	21.91	1,064
Asturias, Principado de	5,770	205	13,882	615	2.43	714	4,905	9.52	14.50	863
Balears, Illes	1,718	1,425	3,803	4,776	2.73	109	1,588	17.42	20.69	234
Canarias	1,795	347	6,574	2,616	4.29	502	2,643	11.21	13.72	561
Cantabria	3,955	67	10,219	112	2.57	222	2,586	12.87	28.20	370
Castilla y León	10,484	85	29,383	138	2.79	2,804	21,146	4.50	8.70	3,281
Castilla-La Mancha	11,044	377	29,085	2,279	2.75	1,559	12,668	7.98	14.24	1,958
Cataluña	18,226	735	41,036	1,344	2.24	1,760	15,668	8.72	18.18	2,340
Comunitat Valenciana	10,299	438	24,644	1,187	2.41	669	6,065	13.73	25.76	993
Extremadura	3,956	372	7,777	1,063	2.04	365	3,568	7.99	16.03	503
Galicia	3,896	140	7,436	238	1.90	290	3,553	6.95	13.50	459
Madrid, Comunidad de	489	0	1,789	0	3.66	89	999	5.77	10.26	103
Murcia, Región de	1,312	0	3,117	0	2.38	139	1,941	5.18	13.50	212
Navarra, Comunidad Foral de	3,616	28	12,838	28	3.53	544	4,165	9.94	17.07	654
País Vasco	2,168	192	5,283	613	2.50	190	2,085	9.10	15.21	236
Rioja, La	1,036	12	2,429	22	2.34	93	963	8.19	11.48	106
Ceuta	-	-	-	-	-	-	-	-	-	-
Melilla	-	-	-	-	-	-	-	-	-	-

<sup>2</sup> To facilitate the comparability between data from different Autonomous Communities (and because of the different regulation and different characteristics), a group called rural house has been created, with those establishments with similar typology (location, capacity, etc...).

The variables included in the previous table have been estimated with that type of establishments.

## 9. Travellers and overnight stays by country of residence

Results by countries	Travellers		Overnight stays	
	Total	%	Total	%
TOTAL	161,806	100.00	398,606	100.00
Residents in Spain	150,045	92.73	359,428	90.17
Residents abroad	11,762	7.27	39,179	9.83
Total Residents abroad	11,762	100.00	39,179	100.00
TOTAL Residents in EU-27 <sup>1</sup> (without Spain)	7,000	59.52	23,799	60.74
- Germany	1,107	9.41	4,599	11.74
- Belgium	317	2.70	845	2.16
- France	3,368	28.64	8,830	22.54
- Italy	267	2.27	925	2.36
- Netherlands	303	2.57	669	1.71
- Portugal	438	3.72	3,233	8.25
United Kingdom	1,678	14.27	8,351	21.32
Switzerland	132	1.12	425	1.09
Other European countries	1,488	12.65	5,278	13.47
United States of America	157	1.34	311	0.79
Other countries	2,506	21.30	5,712	14.58

<sup>1</sup> Since 31 January 2020, The United Kingdom is no longer part of the E.U., hence the aggregate UE-27 is published.

## Tourist Accommodation Occupancy Survey Hostels Occupancy Survey (HOS)

October 2020

Provisional data

1st December 2020

### 1. Travellers, overnight stays and average stay by Autonomous Cities and Communities

Autonomous cities and communities	Travellers			Overnight stays			Average stay
	Total	Residents in Spain	Residents abroad	Total	Residents in Spain	Residents abroad	
<b>TOTAL</b>	13,108	10,462	2,646	44,958	35,286	9,672	3.43
Andalucía	1,524	1,481	43	12,356	12,218	138	8.11
Aragón	502	456	46	1,221	1,085	136	2.43
Asturias, Principado de	-	-	-	-	-	-	-
Balears, Illes	-	-	-	-	-	-	-
Canarias	774	303	471	4,557	865	3,692	5.89
Cantabria	-	-	-	-	-	-	-
Castilla y León	329	281	47	923	620	304	2.81
Castilla - La Mancha	125	125	0	410	410	0	3.28
Cataluña	6,216	5,531	685	15,583	13,052	2,530	2.51
Comunitat Valenciana	1,470	770	700	4,742	3,300	1,442	3.23
Extremadura	-	-	-	-	-	-	-
Galicia	-	-	-	-	-	-	-
Madrid, Comunidad de	611	427	184	989	650	339	1.62
Murcia, Región de	-	-	-	-	-	-	-
Navarra, Comunidad Foral de	-	-	-	-	-	-	-
País Vasco	371	304	67	792	682	111	2.14
Rioja, La	-	-	-	-	-	-	-
Ceuta	-	-	-	-	-	-	-
Melilla	-	-	-	-	-	-	-
Annual rate	-85.30	-82.62	-90.87	-77.63	-72.57	-86.62	52.24
Cumulative annual rate	-77.15	-74.54	-82.28	-74.08	-72.72	-77.05	13.41

### 2. Open establishments, capacity, occupancy and number of staff by autonomous cities and communities

Autonomous cities and communities	Capacity		Occupancy rate		Employed personnel
	Estimated open establishments	Estimated bed-places	Of bed-places	Of bed-places at weekend	
<b>TOTAL</b>	134	14,572	9.95	13.21	979
Andalucía	9	2,025	19.68	20.32	172
Aragón	13	1,190	3.31	4.67	64
Asturias, Principado de	-	-	-	-	-
Balears, Illes	-	-	-	-	-
Canarias	17	414	35.53	34.73	35
Cantabria	-	-	-	-	-
Castilla y León	10	833	3.58	3.52	165
Castilla - La Mancha	8	1,115	1.19	3.31	15
Cataluña	26	3,552	14.15	24.07	214
Comunitat Valenciana	7	1,349	11.34	12.92	53
Extremadura	-	-	-	-	-
Galicia	-	-	-	-	-
Madrid, Comunidad de	4	492	6.48	13.60	83
Murcia, Región de	-	-	-	-	-
Navarra, Comunidad Foral de	-	-	-	-	-
País Vasco	11	1,485	1.72	3.47	72
Rioja, La	-	-	-	-	-
Ceuta	-	-	-	-	-
Melilla	-	-	-	-	-
Annual rate	-43.89	-41.85	-61.52	-60.56	-41.66
Cumulative annual rate	-52.35	-51.12	-46.83	-42.36	-47.78

### 3. Travellers and overnight stays by countries of residence

Countries	Travellers		Overnight stays		Average stay
	Total	%	Total	%	
TOTAL	13,108	100.00	44,958	100.00	3.43
Residents in Spain	10,462	79.82	35,286	78.49	3.37
Residents abroad	2,646	20.18	9,672	21.51	3.66
TOTAL residents abroad	2,646	100.00	9,672	100.00	3.66
TOTAL Residents in EU-27 <sup>1</sup> (without Spain)	1,522	57.52	3,988	41.23	2.62
- Germany	224	8.48	612	6.33	2.73
- Belgium	80	3.01	180	1.86	2.26
- France	578	21.85	1,503	15.54	2.60
- Italy	232	8.78	533	5.51	2.29
- Netherlands	69	2.62	170	1.76	2.46
- Portugal	84	3.17	123	1.27	1.46
United Kingdom	202	7.63	508	5.25	2.52
Switzerland	22	0.83	61	0.63	2.77
Other European countries	420	15.89	1,510	15.62	3.59
United States of America	30	1.12	65	0.67	2.20
Other countries	705	26.63	4,407	45.56	6.25

<sup>1</sup> Since 31 January 2020, The United Kingdom is no longer part of the E.U., hence the aggregate UE-27 is published.

## HOLIDAY DWELLING PRICE INDEX (HDPI)

**October 2020**

Provisional data

1st December 2020

### National general index and breakdown by rates

	Index	Annual variation rate
TOTAL	115.97	-13.97
Normal	108.70	-13.24
Weekend	109.74	-17.00
Tour-operators and travel agencies	124.55	-14.02

### National general index and breakdown by modalities

	Index	Annual variation rate
TOTAL	115.97	-13.97
Studio	112.70	-15.43
Dwellings 2/4 bedplaces	115.44	-14.42
Dwellings 4/6 bedplaces	124.42	-11.65

HDPI (ANNEX OF TABLES) - October 2020. Provisional data



## Tourist Campsite Price Index (TCSPI). 2002 Base

October 2020

Provisional data

1st December 2020

### National general index and breakdown by rates

	Index	Annual variation rate
TOTAL	142.22	2.67
Normal rate	137.47	3.43
Special rate for stays up to one month	166.46	-2.26
Special rate for stays longer than one month	140.01	1.83
Bungalow rate <sup>1</sup>	110.14	3.02

<sup>1</sup>2014 Base

### National general index and breakdown by categories

	Index	Annual variation rate
TOTAL	142.22	2.67
Luxury and first	142.86	4.09
Second	142.44	0.95
Third	108.40	4.34

TCSPI (ANNEX OF TABLES) - October 2020. Provisional data

## Rural Tourism Accommodation Price Index (RTAPI)

October 2020

Provisional data

1st December 2020

### General Autonomous Cities and Communities and national indices

	Index	Annual variation rate
TOTAL	137.96	-2.51
Andalucía	140.21	0.43
Aragón	166.79	4.94
Asturias, Principado de	135.46	2.25
Balears, Illes	108.14	-10.84
Canarias	105.38	-4.26
Cantabria	206.73	6.82
Castilla y León	143.66	-1.23
Castilla - La Mancha	124.58	-5.68
Cataluña	152.97	-1.34
Comunitat Valenciana	146.93	2.10
Extremadura	94.41	-2.35
Galicia	144.60	2.76
Madrid, Comunidad de	148.85	-2.68
Murcia, Región de	154.93	6.37
Navarra, Comunidad Foral de	172.27	-0.08
País Vasco	167.62	3.64
Rioja, La	152.57	-1.89
Ceuta	-	-
Melilla	-	-

### National general index and breakdown by rates

	Index	Annual variation rate
TOTAL	137.96	-2.51
Normal	135.94	-3.84
Weekend	140.64	-1.70

### National general index and breakdown by rent modality

	Index	Annual variation rate
TOTAL	137.96	-2.51
Shared use (in case of per room rent modality)	117.58	-5.47
Full use (rent of entire dwelling)	151.18	-0.98