

04 February 2021

Non-hotel Tourist Accommodation Occupancy Survey
December 2020 and year 2020. Provisional data

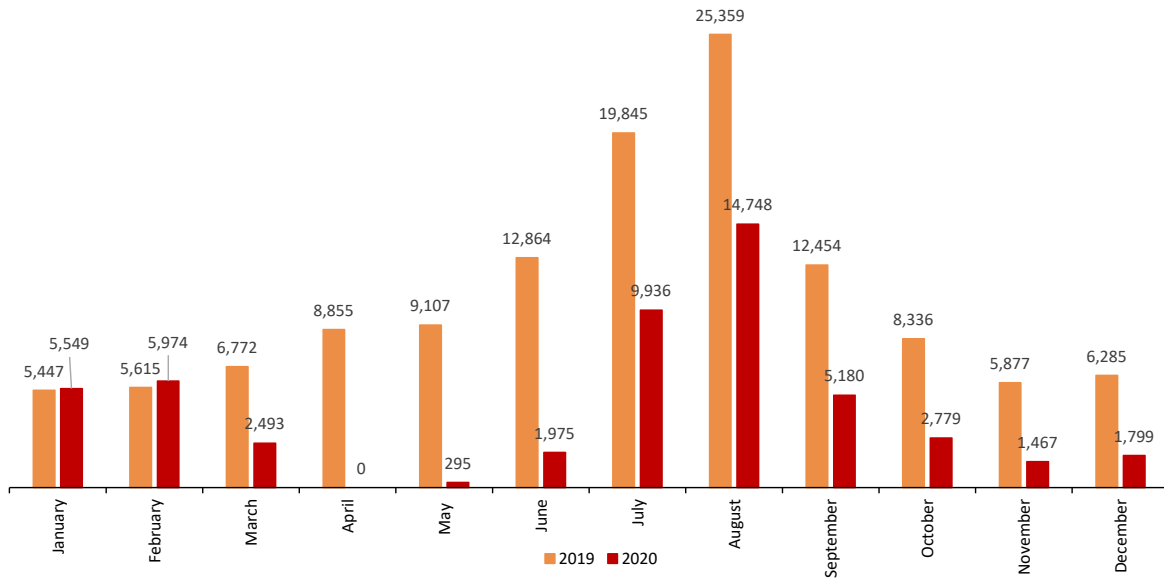
Overnight stays in non-hotel tourist accommodation decreased by 71.4% in December, as compared to the same month of 2019

In 2020, non-hotel overnight stays decreased by 58.8% to 52.2 million

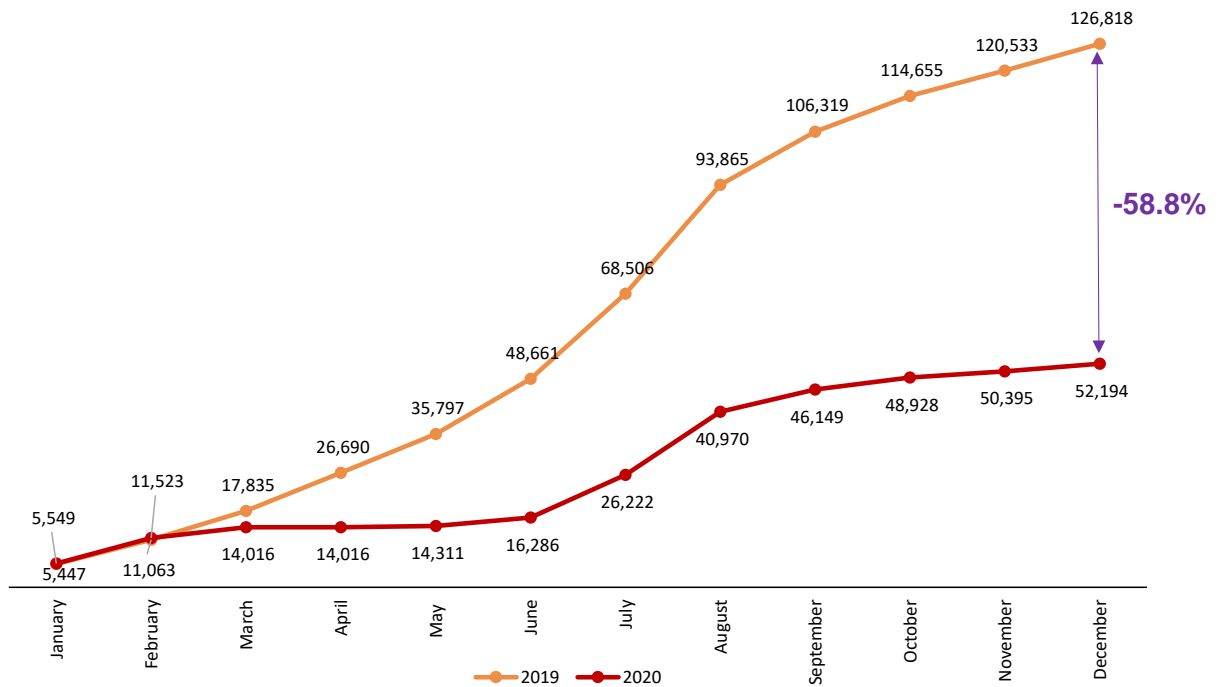
Main results

- The number of non-hotel tourist lodgings open in November (tourist apartments, campsites, rural tourism accommodations and tourist hostels) decreased compared to November, from 100,922 to 85,212. They represented 33.7% less than in December 2019.
- More than 322 thousand travellers stayed at one of these establishments. They made 1.7 million overnight stays, 71.4% less in the annual rate.
- Travellers who are residents of Spain represent 76.5% of the total in this type of accommodation (246 thousand, compared to 75 thousand non-residents), and this is also reflected in overnight stays where 50.7% are non-residents.
- Tourist apartments were the most-visited establishments, with more than 153 thousand travellers and 933 thousand overnight stays - 76.8% less than in December 2019. Of the overnight stays 46.6% corresponded to residents. Costa de Barcelona had the highest occupancy rate (50.5%), as well as the peak weekend occupancy rate (68.5%).
- A total of 612 overnight stays were made at campsites; 50.6% less than in the same month of 2019. The areas with the highest occupation of camp-sites were the Serra Calderona Natural Park (72.3%) and Costa Blanca (60.7%).
- Rural tourism accommodates more than 85 thousand people, 93.5% of whom are residents in Spain. The highest weekend occupancy rates were registered in the Sierra de Guadarrama National Park (38.6%) and in the Garajonay National Park (22.6%).
- During the year 2020 there were 52.2 million overnight stays in non-hotel tourist accommodations, 58.8% less than the same period for 2019. Of these, 32.5 million were made by residents (-36.5%) and 19.7 million by non-residents (-73.9%).

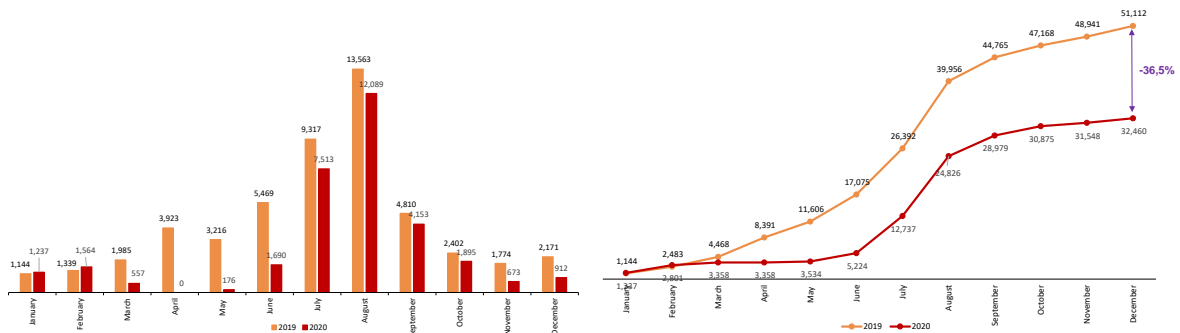
Overnight stays in non-hotel accommodation monthly. Comparative 2019-2020
Thousands



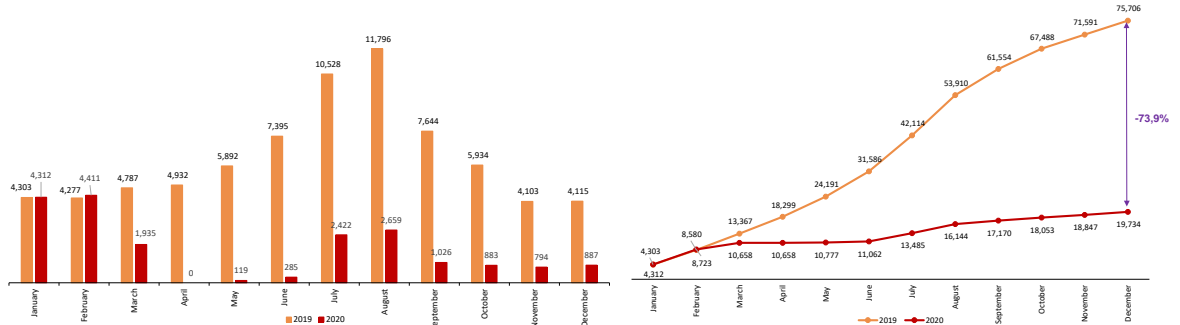
Accumulated overnight stays in non-hotel accommodation. Comparative 2019-2020
Thousands



Monthly and accumulated overnights of residents in Spain. Comparative 2019-2020 Thousands



Monthly and accumulated overnights of non-residents in Spain. Comparative 2019-2020 Thousands



Open establishments

In December, a total of 85,212 hotels were open in Spain, 33.7% less than in the same month of 2019. This represented 61.0% of the total directory of establishments for that month.

| Type of accomodation | Number of open establishments according to the survey | Percentage of total establishments in the directory | Number of estimated places according to the survey | Percentage of total places in the directory |
|-----------------------|---|---|--|---|
| TOTAL | 85,212 | 61.0% | 637,693 | 62.5% |
| Holiday dwellings (*) | 71,954 | 61.4% | 281,355 | 63.3% |
| Campsites | 379 | 58.0% | 228,887 | 66.3% |
| Rural T. | 12,779 | 58.9% | 116,415 | 57.5% |
| Hostels | 100 | 37.2% | 11,036 | 40.4% |
| Annual rate | -33.7 | | -26.9 | |

(*) Estimated number of apartments

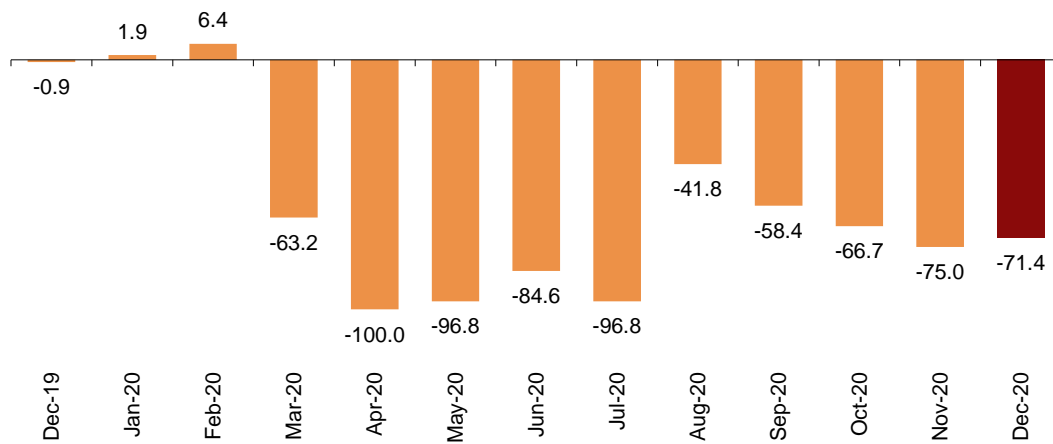
Overnight stays

Overnight stays in hotel establishments exceeded 1.7 million in December, with a decrease of 71.4% compared to the 6.2 million for the same month of 2019.

By traveller origin, overnight stays by residents of Spain decreased by 58.0% in the annual rate, exceeding 912 thousand. In turn, overnight stays by non-residents fell by 78.4%, to 887 thousand.

Annual variation rate for overnight stays

Percentage

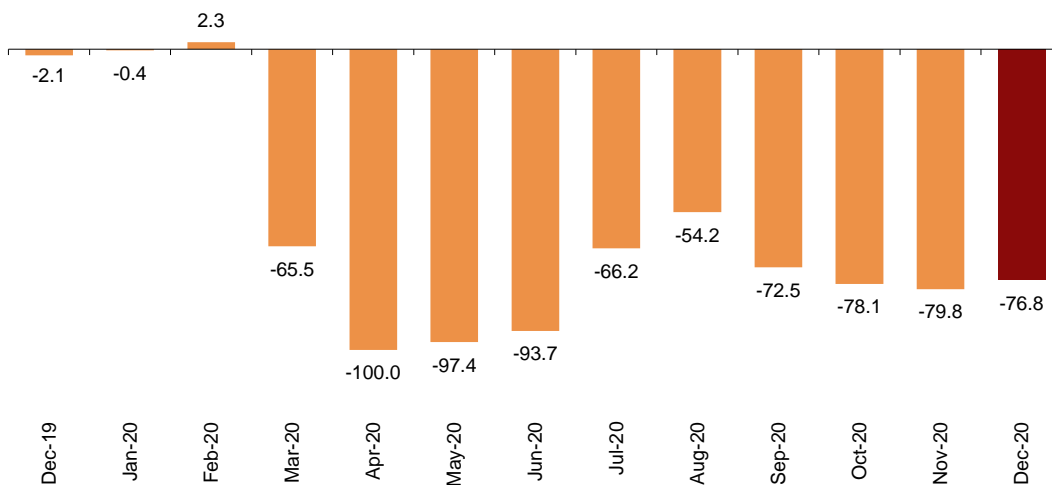


Holiday Dwellings

Overnight stays in holiday dwellings decreased by 76.8% in December in the annual rate. Resident overnight stays decreased by 53.1% and non-resident overnight stays did so by 83.9%.

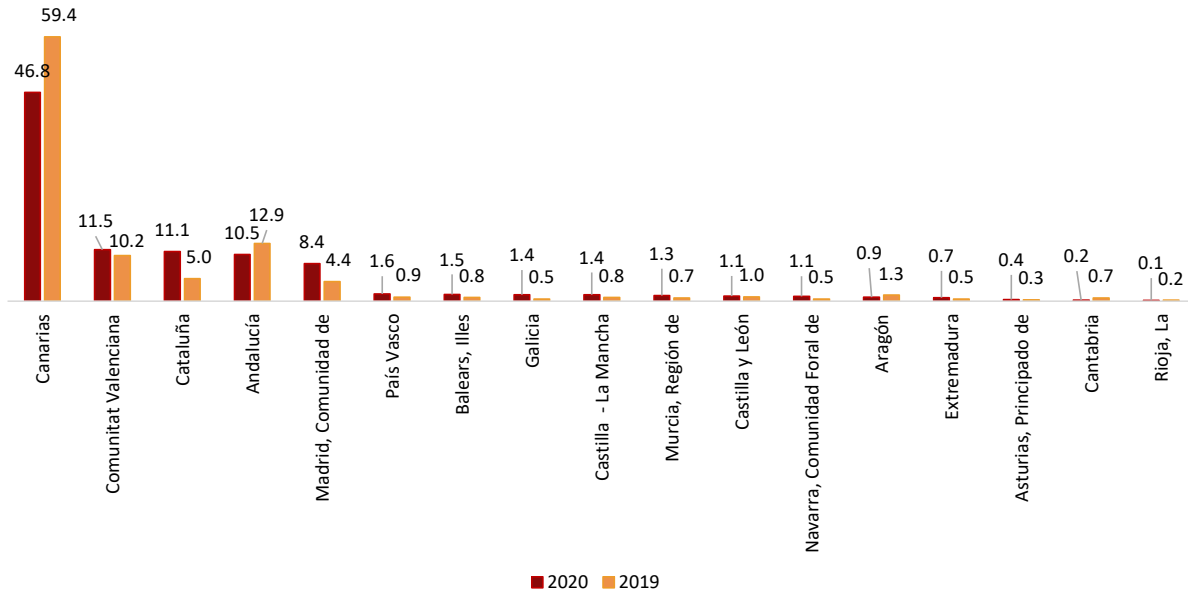
Annual variation rate for overnight stays

Percentage



Canarias, Comunitat Valenciana, and Cataluña were the main destinations for travellers in December, with annual variation rates in the number of overnight stays of -81.7%, -73.8% and -49.0%, respectively.

Distribution of total overnight stays. Comparative November 2019-2020
Percentage



By tourist areas, the Island of Tenerife was the preferred destination for tourist apartments, with 159,314 overnight stays and an occupancy rate of 27.3% for the apartments available.

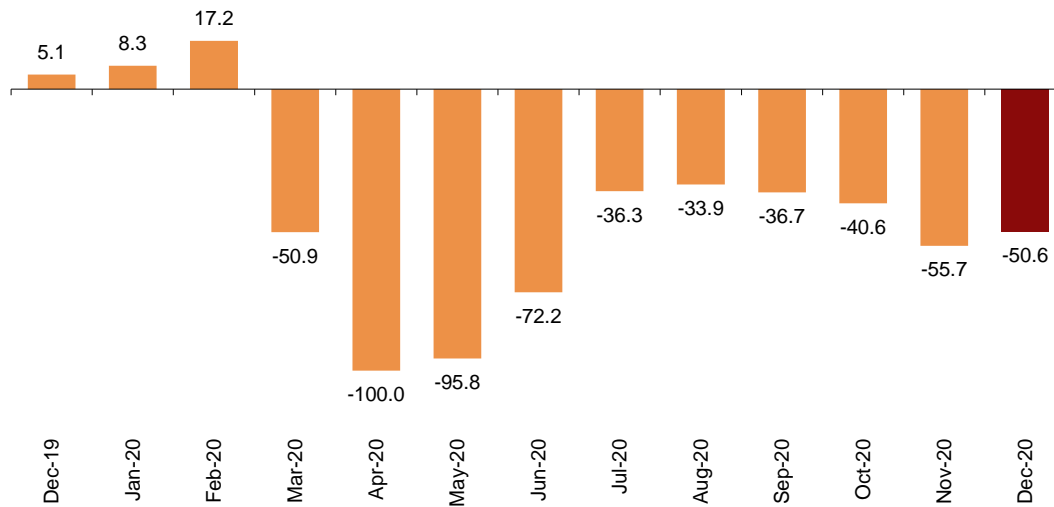
The tourist sites with the highest number of overnight stays in December were San Bartolomé de Tirajana, Madrid, and Arona.

Tourist Campsites

Overnight stays at tourist campsites registered a decrease of 50.6% in December as compared with the same month of the previous year. Resident overnight stays decreased by 32.6% and non-resident overnight stays did so by 58.5%.

Annual variation rate for overnight stays

Percentage



In December, 32.5% of the campsites offered were occupied, 15.3% more than in the same month of 2019. The weekend occupancy rate reached 31.0%, with a 20.5% annual decrease.

Comunitat Valenciana was the preferred destination for tourist campsites, with 337,152 overnight stays, representing a decrease of 46.2% compared to December 2019. Comunidad de Madrid reached the highest occupancy rate, with 44.7% of campsites offered.

By tourist areas, Costa Blanca was the preferred destination, with 208,765 overnight stays and an occupancy rate of 60.7% of the campsites offered.

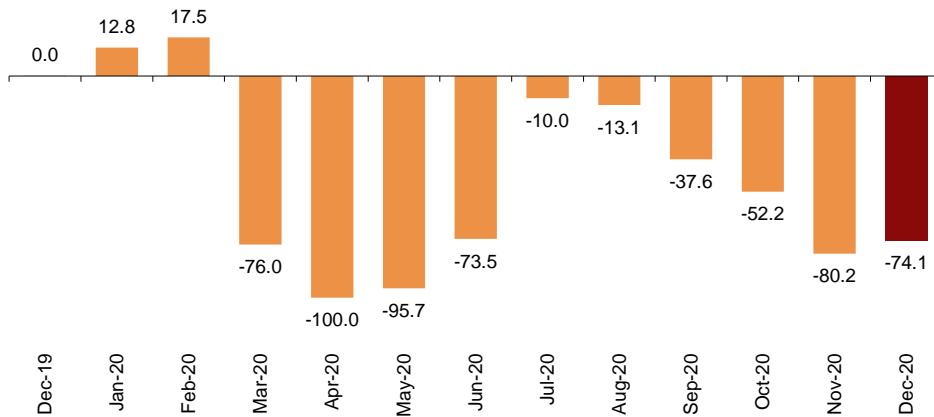
The tourist sites with the most overnight stays were Benidorm, Cartagena and Blanes.

Rural tourism accommodation

Overnight stays in rural tourist accommodations decreased by 74.1% in December, as compared to the same month of 2019 Resident overnight stays decreased by 73.8% and non-resident overnight stays did so by 76.1%.

Annual variation rate for overnight stays

Percentage



In rural tourism accommodation, 6.3% of bedplaces were occupied, 64.8% less than in December 2019. The weekend occupancy rate stood at 9.1%, with a decrease of 71.1%.

By Autonomous Community, Cataluña was the preferred destination, with 41,622 overnight stays, 63.0% less than in December 2019. Comunidad de Madrid reached the highest occupancy rate, with 20.5% of bed-places offered.

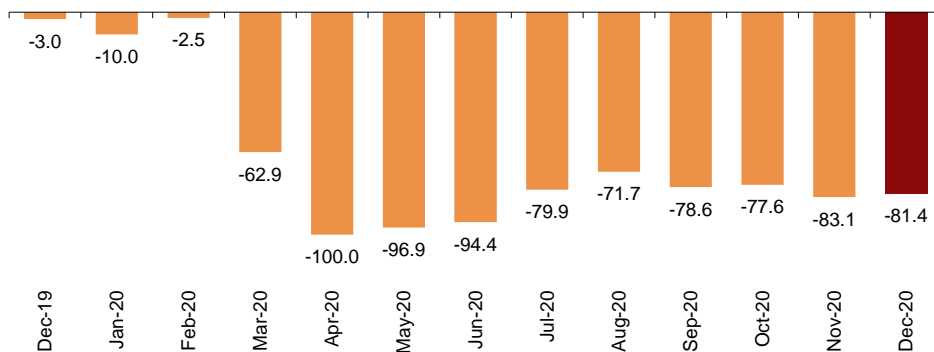
By tourist area, Pirineus was the main destination, with 16,535 overnight stays. The Parque Nacional del Teide reached the highest occupancy rate, with 22.5% of the bed-places offered.

Hostels

Overnight stays in hostels registered an annual decrease of 81.4% in December. Resident overnight stays decreased by 80.0% and non-resident overnight stays did so by 83.8%.

Annual variation rate for overnight stays

Percentage



In hostels, 7.5% of the available bed-places were occupied, 66.7% less than in December 2019. The weekend occupancy rate reached 9.6%, with a 49.3% decrease.

By Autonomous Community, Andalucía was the preferred destination, with 8,668 overnight stays, 56.3% less than in December 2019. Canarias reached the highest occupancy rate, with 40.8% of the bed-places offered.

Price indices

The Tourist Apartment Price Index (TAPI) decreased by 13.1% in December compared to the same month of 2019 and the Rural Tourism Accommodation Price Index (RTAPI) decreased by 2.6%.

On the other hand, the Tourist Campsite Price Index (TCPI) increased by 0.1%.

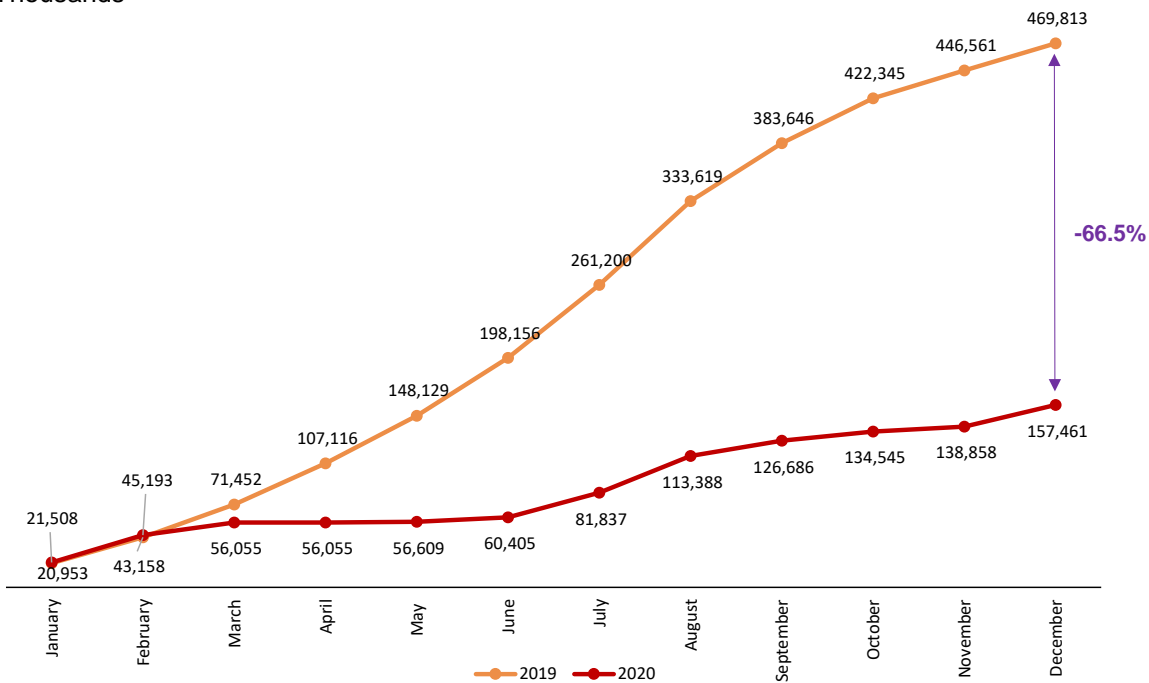
Evolution of travellers and overnight stays in all Spanish collective tourist accommodation

In December, overnight stays in Spanish collective tourist accommodations (hotels¹, holiday dwellings, tourist campsites, rural tourism accommodation and youth hostels) decreased by 20.0% in the annual rate.

Accumulated annual overnight stays in all tourist accommodations decreased by 66.5%.

Accumulated overnight stays. Comparative 2019-2020

Thousands



¹ The press release corresponding to Hotel Tourism Short-Term Trends was published on 25 December.

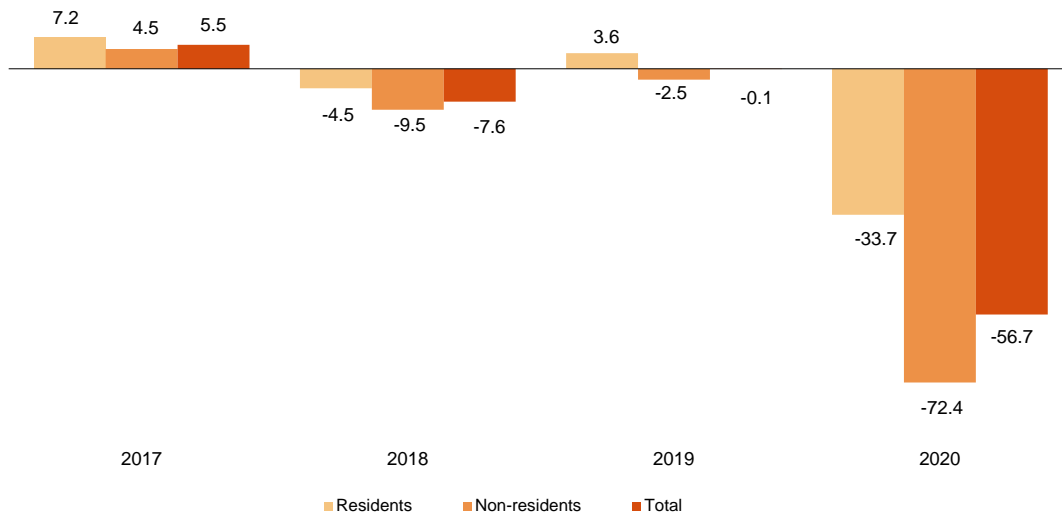
Results for the whole year 2020

Overnight stays in non-hotel tourist accommodation (holiday dwellings, tourist campsites, rural tourism accommodation and youth hostels) reached 52.1 million in 2020, 56.7% less than in 2019. Overnight stays by residents decreased by 33.7%, and those by non-resident by 72.4%.

45% of overnight stays were made in holiday dwellings, 41.6% in campsites, 12% in rural tourism accommodation and the remaining 1.4% in hostels.

Annual variation rate for overnight stays

Percentage

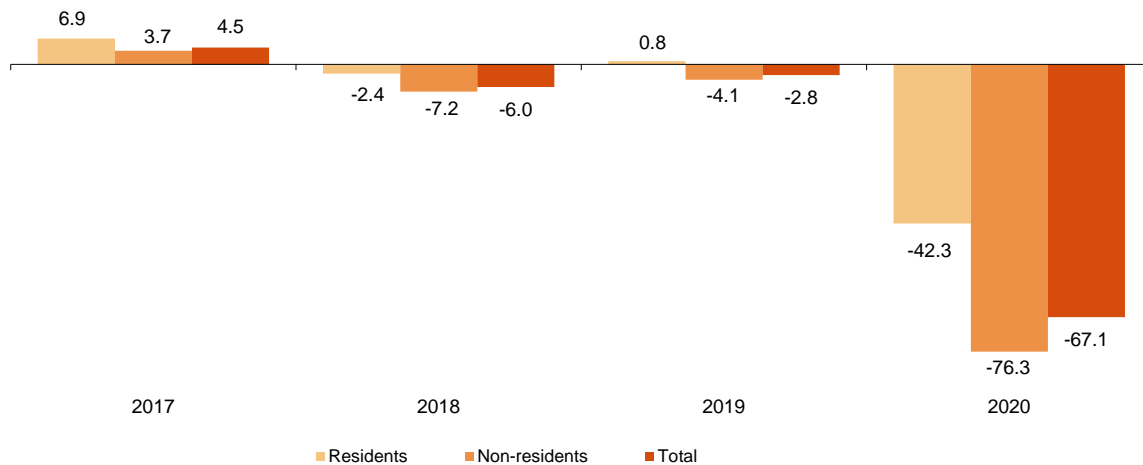


Holiday Dwellings

Overnight stays in holiday apartments decreased by 67.1% in 2020. Resident overnight stays decreased by 42.3% and those of non-residents by 76.3%.

Non-resident travellers, who represented 38.8% of the total, made 52.6% of the total overnight stays in holiday dwellings.

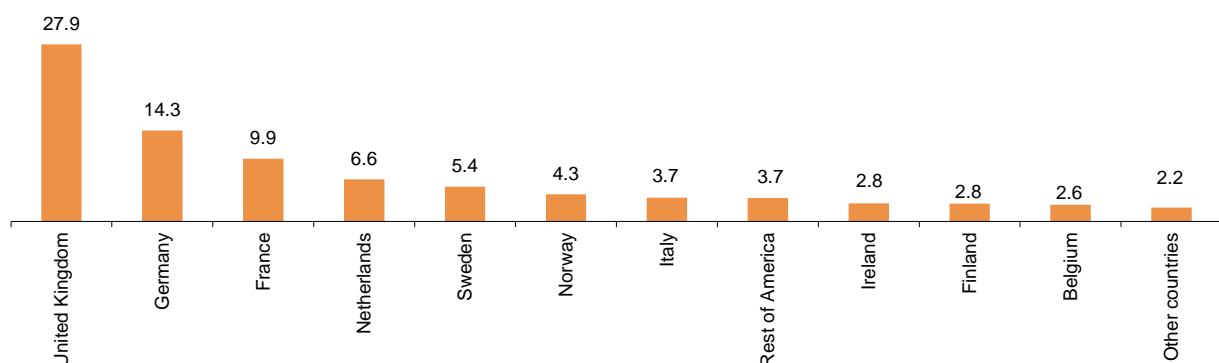
Annual variation rate for overnight stays
Percentage



In the year 2020, on average 21.2% of the bedplaces available for holiday apartments were occupied, 44.4% less than in 2019. The weekend occupancy rate by bedplaces stood at 23.2%, with a decrease of 43.7%.

The United Kingdom became the main country of origin for holiday apartments, with 3.4 million overnight stays, 81.8% less than in 2019. The following country of origin was Germany, with more than 1.7 million overnight stays and an annual decrease of 71.7%.

Distribution of non-residents overnight stays. Main country of residence. Year 2020
Percentage



Canarias was the preferred holiday dwellings destination, with more than 8.6 million overnight stays, 69.4% less than in 2019. The second destination was the Comunitat Valenciana, with over 3.8 million overnight stays, 63.7% less.

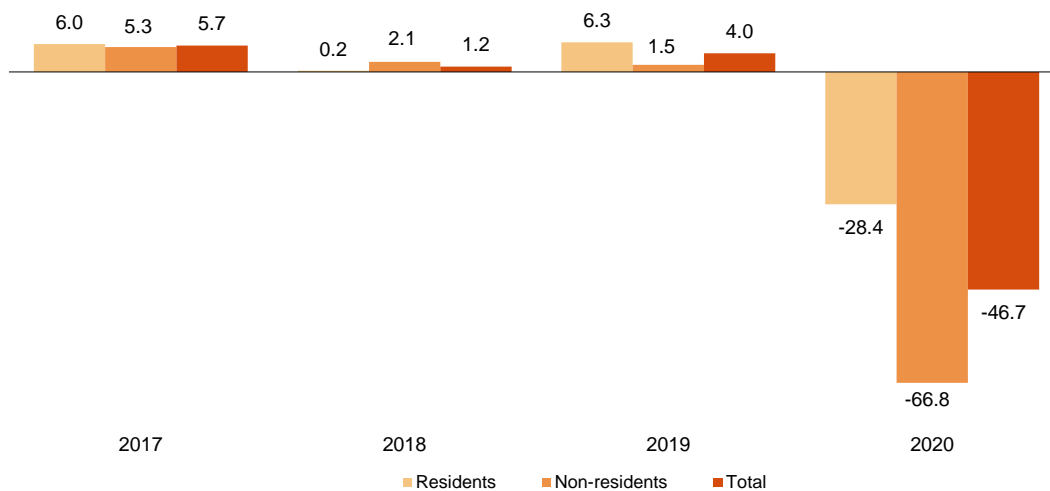
Canarias and the Comunidad de Madrid registered the highest average occupancy rates for apartments, with 46.2% and 45.8%, respectively.

Tourist Campsites

Overnight stays at tourist campsites decreased by 46.7% in 2020. Stays by residents decreased by 28.4%, and those by non-resident by 66.8%.

Annual variation rate for overnight stays

Percentage



On average, the number of bedplaces offered by tourist campsites was 337,925, which is 32.7% less than in 2019. 36.3% of the offered pitches were occupied, 11.1% less. The average weekend occupancy rate by pitch reached 37.9%, 12.5% more than in 2019.

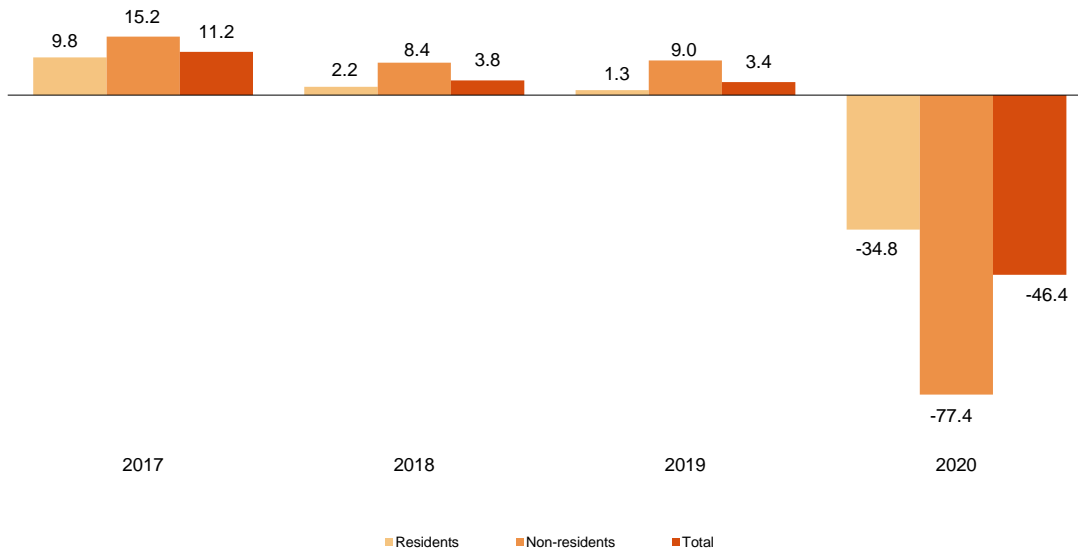
29.8% of overnight stays at tourist campsites were by non-resident travellers. United Kingdom was the main country of origin, with 31.1% of total overnight stays, 51.9% less than in 2019.

Cataluña was the preferred destination for tourist campsites, with over 7.3 million overnight stays, 57.2% less than in 2019. On the other hand, La Rioja reached the highest occupancy rate on average, with 61.0% of the pitches offered.

Rural tourism accommodation

Overnight stays at rural tourism accommodation decreased by 46.4% in 2020. Stays by residents decreased by 34.8%, and those of non-residents by 77.4%.

Annual variation rate for overnight stays
Percentage

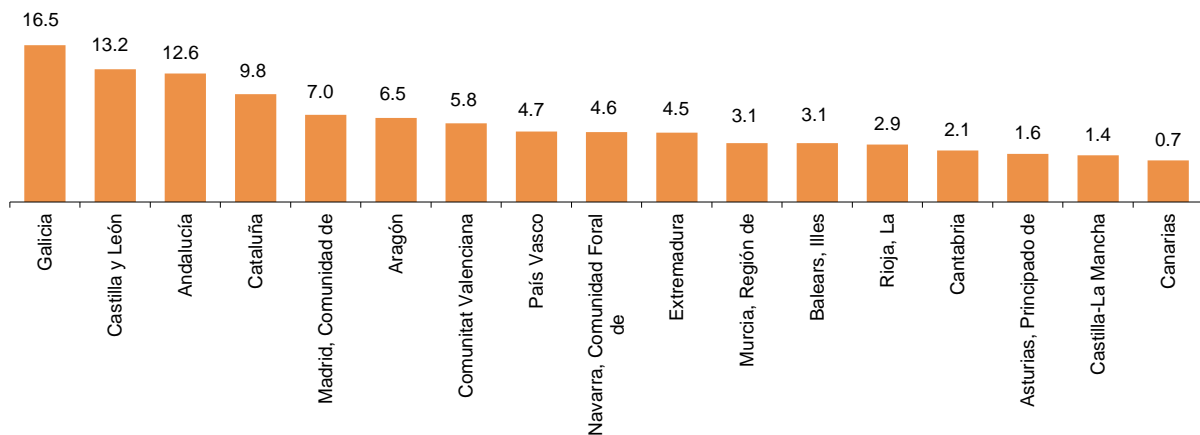


On average, the number of bed-places offered by rural tourism accommodation was 110,107, which is 33.7% less than in 2019. The average occupancy rate was 15.5%, with an decrease of 19.4%. The weekend occupancy rate decreased by 27.4% to 23.7%.

Castilla y León was the preferred destination, with over 944,544 overnight stays, 48.2% less than in 2019.

Illes Balears reached, on average, the highest occupancy rate, with 24.2% of the bedplaces offered.

Distribution of residents overnight stays by autonomous of destination. Year 2020
Percentage

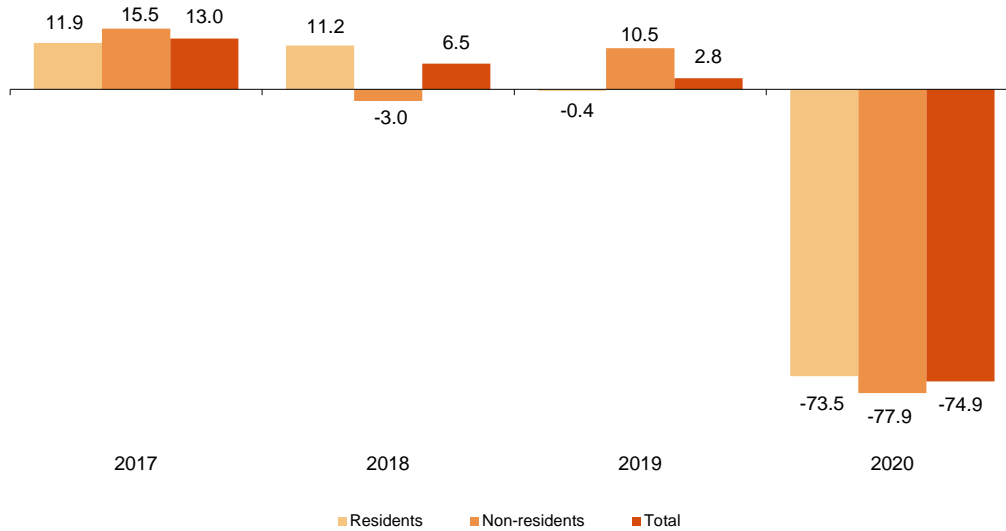


Hostels

Overnight stays in hostels decreased by 74.9% in 2020 as a whole. Stays by residents fell by 73.5%, and those by non-residents by 77.9%.

Annual variation rate for overnight stays

Percentage



On average, the number of bedplaces offered by youth hostels was 12,621, which is 54.1% less than in 2019. The average occupancy rate was 16.3%, with an decrease of 31.7%. The weekend occupancy rate decreased by 1.5%, standing at 19.1%.

By Autonomous Community, Cataluña was the preferred destination, with 239,480 overnight stays, 75.8% less than in 2019.

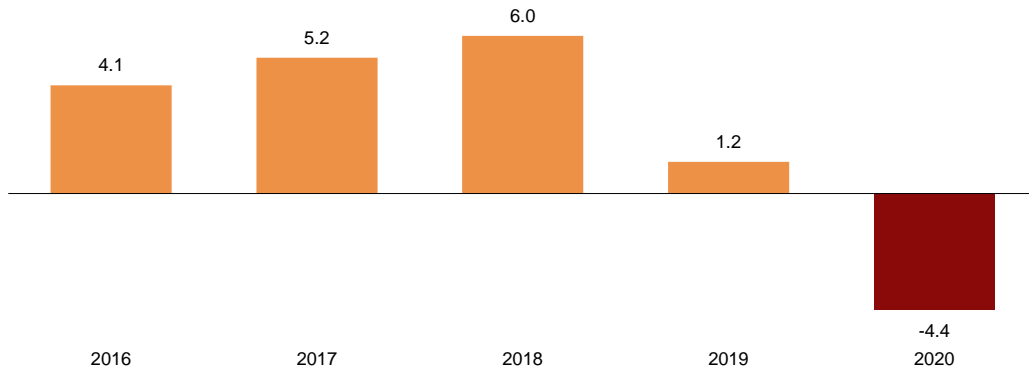
On average, Canarias reached the highest occupancy rate, with 42.9% of the bedplaces offered.

Non-hotel Tourist Accommodation Price Indices

In 2020, the Holiday Dwelling Price Index (HDPI) registered an average decrease of 4.4%.

Holiday dwelling Price index

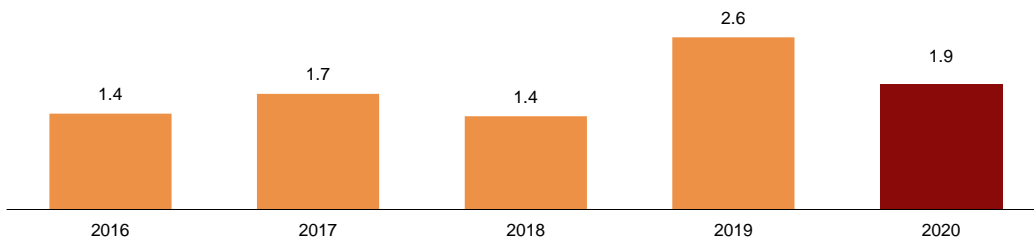
Annual variation rate. Percentage



On the other hand, the Tourist Campsite Price Index (TCPI) increased by 1.9%.

Tourist campsite Price index

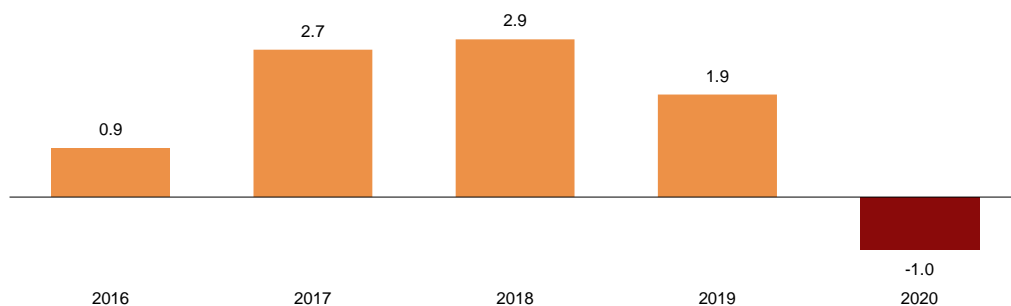
Annual variation rate. Percentage



The Rural Tourism Accommodation Price Index (RTAPI) registered an average decrease of 1.0% in 2020.

Rural tourism accommodation Price index

Annual variation rate. Percentage



Evolution of travellers and overnight stays in the different types of Spanish collective tourist accommodation in 2020

Overnight stays in all Spanish collective tourist accommodation (hotels², holiday dwellings, tourist campsites, rural tourism accommodation and youth hostels) exceeded 143.8 million in 2020, with a decrease of 69.4% compared to the previous year.

Overnight stays by residents decreased by 51.3%, those by non-residents by 79.7%. The average stay decreased by 8.8%, to 3.2 overnight stays per traveller.

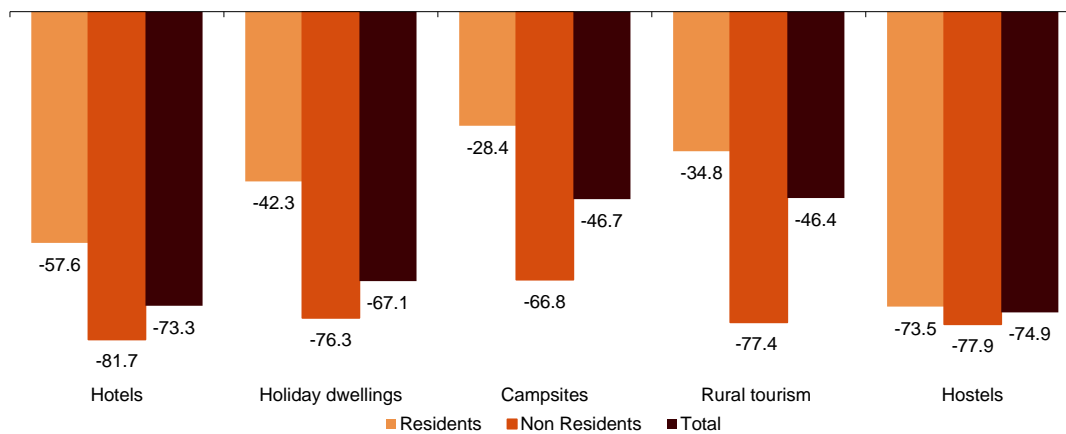
Travellers and overnight stays in collective tourist accommodation were³:

| Year 2020 | Holiday dwellings | Campsites | Rural T. | Hostels | Non-hotel | Hotels | Total |
|------------------------|-------------------|------------|-----------|---------|------------|------------|-------------|
| Arrivals | 4,165,348 | 4,526,852 | 2,070,637 | 233,031 | 10,995,868 | 34,348,640 | 45,344,507 |
| Residents | 2,547,905 | 3,918,822 | 1,888,639 | 171,683 | 8,527,050 | 23,543,261 | 32,070,311 |
| Non-residents | 1,617,443 | 608,029 | 181,998 | 61,348 | 2,468,818 | 10,805,378 | 13,274,196 |
| Overnight stays | 23,459,959 | 21,701,122 | 6,282,936 | 750,021 | 52,194,038 | 91,655,455 | 143,849,493 |
| Residents | 11,116,565 | 15,245,035 | 5,559,402 | 538,684 | 32,459,685 | 50,747,252 | 83,206,937 |
| Non-residents | 12,343,394 | 6,456,087 | 723,534 | 211,338 | 19,734,354 | 40,908,203 | 60,642,557 |

Of the total number of overnight stays in collective tourist accommodation, 64% corresponded to hotels and 36% to non-hotel tourist accommodation.

Overnight stays in collective tourist accommodation. Year 2020

Annual variation rate. Percentage



The main countries of origin were the United Kingdom (with 22.0% of the total number of non-resident overnight stays), Germany (17.2%) and France (11.5%).

By Autonomous Community, Canarias was the preferred destination, with more than 29 million overnight stays, 69.7% less than in 2019. It was followed by Cataluña, (with 24 million overnight stays, and a decrease of 71.1%) and Andalucía, (with over 23 million, and a decrease of 66.3%).

² The press release corresponding to Hotel Tourism Short-Term Trends was published on 25 January.

³ The results presented in the table are the sum of the monthly figures. Possible discrepancies between the subtotals and the total are justified, since the data are presented without decimal places, but are calculated taking them into account. Therefore, the differences are explained by rounding.

Revision and updating of data

Coinciding with today's publication, the INE has updated the data for December 2019 in the Holiday Dwelling Price Index (HDPI), the Tourist Campsite Price Index (TCPI) and the Rural Tourism Accommodation Price Index (RTAPI).

Methodological note

The main objective of the Holiday Dwelling Occupancy Survey (HDOS) is to ascertain the behaviour of a series of variables that make it possible to describe the segment that occupies this type of accommodation within the tourist sector, both from the point of view of supply and demand.

The Holiday Dwelling Price Index (HDPI) is a statistical measure of the monthly evolution of the prices offered by holiday dwelling establishments to their clients.

Type of operation: monthly continuous survey.

Population scope: holiday apartment establishments and/or companies operating holiday apartments.

Geographical scope: the entire national territory, with the exception of Ceuta and Melilla, where there are no establishments of this type.

Reference period of the results: the month.

Reference period for the information: The consultation of basic data refers to a fortnight of the month, chosen randomly, in such way that the complete month is covered among all establishments.

Type of sampling: stratified sampling by province and establishment size, and stratified at island-size level for Canarias and Illes Balears.

Collection method: questionnaire filled in directly by the establishment.

For more information on these statistical operations, you can consult the [methodology and the standardised methodological report](#) for each operation in INEbase.

The main objective of the Campsite Occupancy Survey (COS) is to ascertain the behaviour of a series of variables that make it possible to describe the segment that this type of accommodation occupies within the tourist sector, from the viewpoint of both supply and demand.

The Tourist Campsite Price Index (TCPI) is a statistical measure of the monthly evolution of the prices offered by campsites to their clients.

Type of operation: monthly continuous survey.

Population scope: camping establishments.

Geographical scope: the entire national territory, with the exception of Ceuta and Melilla, where there are no establishments of this type.

Reference period of the results: the month.

Reference period of the information: seven consecutive days of each month, chosen randomly in such way that, between all the establishments, the entire month is covered.

Sample size: approximately 1200 establishments.

Type of sampling: comprehensive survey in all provinces.

Collection method: questionnaire filled in directly by the establishment.

For more information on these statistical operations, you can consult the [methodology and the standardised methodological report](#) for each operation in INEbase.

The main objective of the Rural Tourism Accommodation Occupancy Survey (RTAOS) is to ascertain the behaviour of a series of variables that make it possible to describe the fundamental characteristics of this type of accommodation within the tourist sector, both from the point of view of supply and demand.

The Rural Tourism Accommodation Price Index (RTAPI) is a statistical measure of the monthly evolution of the prices that entrepreneurs of this type of accommodation apply to their clients.

Type of operation: monthly continuous survey.

Population scope: rural tourism establishments registered as such in the corresponding register of each Autonomous Community.

Geographical scope: the entire national territory, with the exception of Ceuta and Melilla where there are no establishments of this type.

Reference period of the results: the month.

Reference period for the information: The consultation of basic data refers to all the days of the month.

Type of sampling: comprehensive survey in all provinces except those where the population size is large enough to take a sample.

Collection method: questionnaire filled in directly by the establishment.

For more information on these statistical operations, you can consult the [methodology and the standardised methodological report](#) for each operation in INEbase.

The main objective of the Hostels Occupancy Survey (HOS) is to ascertain the behaviour of a series of variables that make it possible to describe the fundamental characteristics of this type of accommodation within the tourist sector, both from the point of view of supply and demand.

For more information on this statistical operation, you can consult the [methodology and the standardised methodological report](#) in INEbase.

INE statistics are produced in accordance with the Code of Good Practice for European Statistics, which is the basis for the institution's quality policy and strategy. For more information see the section on Quality at INE and the Code of Best Practices on the INE website.

For further information see **INEbase:** www.ine.es/en/ Twitter: [@es_ine](https://twitter.com/es_ine)

All press releases at: www.ine.es/prensa/prensa_en.htm

Press office: Telephone numbers: (+34) 91 583 93 63 /94 08 – gprensa@ine.es

Information Area: Telephone number: (+34) 91 583 91 00 – www.ine.es/infoine/?L=1

Tourist Accommodation Occupancy Survey (Holiday Dwellings)

December 2020

Provisional data

1th February 2021

1. Travellers, overnight stays and average stay by Autonomous Cities and Communities

| Autonomous Cities and Communities | Travellers | | | Overnight stays | | | Average stay |
|-----------------------------------|------------|--------------------|------------------|-----------------|--------------------|------------------|--------------|
| | Total | Residents in Spain | Residents abroad | Total | Residents in Spain | Residents abroad | |
| TOTAL | 153,377 | 95,885 | 57,492 | 933,679 | 434,920 | 498,759 | 6.09 |
| Andalucía | 28,048 | 23,074 | 4,975 | 97,935 | 64,417 | 33,518 | 3.49 |
| Aragón | 2,255 | 2,153 | 102 | 8,189 | 7,473 | 717 | 3.63 |
| Asturias, Principado de | 215 | 188 | 27 | 3,306 | 3,199 | 107 | 15.38 |
| Balears, Illes | 1,882 | 1,355 | 527 | 13,576 | 7,874 | 5,703 | 7.21 |
| Canarias | 67,055 | 22,329 | 44,726 | 437,410 | 84,203 | 353,208 | 6.52 |
| Cantabria | 699 | 672 | 26 | 2,053 | 1,897 | 157 | 2.94 |
| Castilla y León | 3,428 | 3,250 | 178 | 10,424 | 9,075 | 1,350 | 3.04 |
| Castilla - La Mancha | 2,017 | 1,997 | 19 | 13,256 | 12,761 | 495 | 6.57 |
| Cataluña | 8,644 | 7,588 | 1,056 | 103,808 | 78,283 | 25,526 | 12.01 |
| Comunitat Valenciana | 18,300 | 14,747 | 3,553 | 107,743 | 62,656 | 45,087 | 5.89 |
| Extremadura | 2,613 | 2,521 | 93 | 6,782 | 6,207 | 575 | 2.60 |
| Galicia | 2,005 | 1,873 | 132 | 13,361 | 11,975 | 1,386 | 6.66 |
| Madrid, Comunidad de | 10,301 | 8,788 | 1,514 | 78,248 | 53,650 | 24,598 | 7.60 |
| Murcia, Región de | 1,895 | 1,716 | 178 | 11,823 | 10,226 | 1,596 | 6.24 |
| Navarra, Comunidad Foral de | 1,360 | 1,237 | 123 | 9,928 | 7,574 | 2,354 | 7.30 |
| País Vasco | 2,310 | 2,064 | 246 | 14,662 | 12,312 | 2,349 | 6.35 |
| Rioja, La | 350 | 333 | 17 | 1,173 | 1,139 | 34 | 3.35 |
| Ceuta | - | - | - | - | - | - | - |
| Melilla | - | - | - | - | - | - | - |
| Annual rate | -78.57 | -67.11 | -86.45 | -76.84 | -53.05 | -83.93 | 8.10 |
| Cumulative annual rate | -66.62 | -46.61 | -79.01 | -67.14 | -42.30 | -76.32 | -1.54 |

2. Capacity, occupancy and number of staff by Autonomous Cities and Communities

| Autonomous Cities and Communities | Capacity | | Level of occupancy | | | | Employed personnel |
|-----------------------------------|---------------------|----------------------------|--------------------|--------------------------|----------------------|---------------------------------|--------------------|
| | Estimated bedplaces | Estimated Holiday dwelling | Per bedplaces | Per bedplaces at weekend | Per Holiday dwelling | Per Holiday dwelling at weekend | |
| TOTAL | 281,355 | 71,954 | 10.69 | 11.26 | 20.12 | 20.94 | 12,982 |
| Andalucía | 49,219 | 12,166 | 6.42 | 7.24 | 11.91 | 12.96 | 2,360 |
| Aragón | 5,552 | 1,305 | 4.75 | 4.99 | 10.32 | 10.61 | 411 |
| Asturias, Principado de | 1,113 | 244 | 9.58 | 10.82 | 20.94 | 25.09 | 60 |
| Balears, Illes | 2,635 | 653 | 16.60 | 17.18 | 32.36 | 32.60 | 225 |
| Canarias | 83,425 | 25,373 | 16.88 | 17.70 | 26.44 | 27.53 | 5,109 |
| Cantabria | 2,702 | 680 | 2.45 | 2.46 | 5.83 | 5.26 | 270 |
| Castilla y León | 4,853 | 1,164 | 6.93 | 7.78 | 16.54 | 18.00 | 433 |
| Castilla - La Mancha | 4,565 | 1,071 | 9.37 | 10.89 | 20.86 | 23.33 | 331 |
| Cataluña | 17,229 | 4,229 | 19.43 | 19.17 | 34.49 | 34.08 | 555 |
| Comunitat Valenciana | 82,946 | 16,991 | 4.19 | 4.42 | 9.58 | 10.08 | 1,458 |
| Extremadura | 3,161 | 759 | 6.92 | 9.36 | 13.75 | 17.67 | 446 |
| Galicia | 3,278 | 887 | 12.48 | 13.59 | 25.75 | 27.18 | 206 |
| Madrid, Comunidad de | 8,689 | 3,337 | 29.03 | 30.14 | 39.30 | 39.98 | 319 |
| Murcia, Región de | 5,402 | 1,422 | 7.06 | 7.49 | 15.61 | 16.07 | 128 |
| Navarra, Comunidad Foral de | 1,736 | 486 | 18.32 | 17.33 | 39.75 | 37.50 | 380 |
| País Vasco | 3,880 | 973 | 12.18 | 12.59 | 30.51 | 30.28 | 222 |
| Rioja, La | 971 | 214 | 3.90 | 5.03 | 12.36 | 14.06 | 68 |
| Ceuta | - | - | - | - | - | - | - |
| Melilla | - | - | - | - | - | - | - |
| Annual rate | -33.30 | -35.23 | -65.20 | -67.12 | -60.04 | -61.68 | -45.57 |
| Cumulative annual rate | -40.75 | -42.57 | -44.38 | -43.73 | -40.64 | -40.19 | -49.25 |

3. Travellers, overnight stays, capacity, occupancy, total number of staff with greater number of overnight stays¹

| Provinces | Travellers | | Overnight stays | | | Capacity | | Level of occupancy | | | Employed personnel |
|---------------------|--------------------|------------------|--------------------|------------------|--------------|----------------------|----------------------------|--------------------|----------------------|---------------------------------|--------------------|
| | Residents in Spain | Residents abroad | Residents in Spain | Residents abroad | Average stay | Estimated bed-places | Estimated holiday dwelling | Per bed-places | Per Holiday dwelling | Per Holiday dwelling at weekend | |
| Palmas, Las | 11,369 | 22,893 | 46,821 | 207,191 | 7.41 | 50,291 | 15,209 | 16.26 | 25.89 | 26.52 | 2,836 |
| St Cruz de Tenerife | 10,960 | 21,833 | 37,382 | 146,016 | 5.59 | 33,134 | 10,164 | 17.82 | 27.27 | 29.04 | 2,272 |
| Barcelona | 2,848 | 857 | 64,017 | 24,750 | 23.96 | 6,848 | 2,033 | 41.80 | 62.43 | 62.97 | 276 |
| Alicante\Alacant | 7,117 | 2,358 | 27,631 | 35,957 | 6.71 | 57,154 | 11,769 | 3.59 | 7.93 | 8.38 | 1,038 |
| Málaga | 7,266 | 2,806 | 23,936 | 25,292 | 4.89 | 28,844 | 6,546 | 5.51 | 10.48 | 11.40 | 1,292 |
| Castellón\Castelló | 3,402 | 338 | 19,509 | 3,851 | 6.25 | 12,450 | 2,397 | 6.05 | 11.51 | 11.70 | 160 |
| Valencia\València | 4,228 | 857 | 15,516 | 5,279 | 4.09 | 13,341 | 2,824 | 5.03 | 14.80 | 15.81 | 261 |
| Sevilla | 5,171 | 568 | 14,359 | 2,978 | 3.02 | 4,749 | 1,523 | 11.76 | 22.76 | 23.04 | 300 |
| Granada | 5,802 | 1,302 | 13,286 | 3,430 | 2.35 | 4,978 | 1,288 | 10.82 | 13.77 | 14.46 | 334 |
| Toledo | 190 | 10 | 7,548 | 333 | 31.00 | 652 | 182 | 38.97 | 72.53 | 71.91 | 27 |
| Lleida | 2,302 | 33 | 7,163 | 250 | 3.17 | 1,727 | 369 | 13.85 | 20.33 | 15.90 | 82 |
| Lugo | 448 | 54 | 6,214 | 1,076 | 14.52 | 1,110 | 301 | 21.18 | 32.62 | 34.02 | 41 |
| Girona | 1,971 | 84 | 6,187 | 351 | 3.18 | 8,248 | 1,729 | 2.56 | 5.67 | 5.11 | 166 |
| Araba\Álava | 371 | 24 | 5,365 | 889 | 15.81 | 887 | 246 | 22.74 | 55.30 | 54.06 | 38 |
| Cádiz | 1,949 | 189 | 5,066 | 682 | 2.69 | 3,224 | 895 | 5.74 | 11.44 | 12.56 | 168 |

¹ Provinces belonging to uniprovincial Autonomous Communities have not been included because they are reflected in previous tables.

4. Travellers, overnight stays, capacity, occupancy, total number of staff from tourist areas with greater number of overnight stays

| Tourist Areas | Travellers | | Overnight stays | | | Capacity | | Level of occupancy | | | Employed personnel |
|------------------------|--------------------|------------------|--------------------|------------------|--------------|----------------------|----------------------------|--------------------|----------------------|---------------------------------|--------------------|
| | Residents in Spain | Residents abroad | Residents in Spain | Residents abroad | Average stay | Estimated bed-places | Estimated holiday dwelling | Per bed-places | Per Holiday dwelling | Per Holiday dwelling at weekend | |
| Isla de Tenerife | 8,593 | 20,383 | 27,875 | 131,439 | 5.50 | 28,459 | 8,549 | 18.02 | 27.34 | 29.35 | 1,876 |
| Isla de Gran Canaria | 5,909 | 9,279 | 23,076 | 99,600 | 8.08 | 22,887 | 7,163 | 17.28 | 26.79 | 27.50 | 1,355 |
| Isla de Lanzarote | 3,423 | 9,865 | 15,147 | 77,664 | 6.98 | 20,227 | 5,710 | 14.78 | 24.77 | 25.31 | 1,128 |
| Costa Barcelona 2016 | 1,591 | 410 | 55,661 | 19,748 | 31.00 | 4,815 | 1,497 | 50.52 | 68.46 | 68.88 | 158 |
| Costa Blanca | 6,473 | 2,274 | 25,755 | 35,585 | 7.01 | 54,935 | 11,341 | 3.60 | 7.94 | 8.36 | 955 |
| Costa del Sol (Málaga) | 6,442 | 2,675 | 21,381 | 24,391 | 5.02 | 27,173 | 6,116 | 5.43 | 9.99 | 10.77 | 1,190 |
| Isla de Fuerteventura | 2,037 | 3,750 | 8,598 | 29,927 | 6.66 | 7,177 | 2,336 | 17.18 | 25.88 | 26.48 | 353 |
| Costa de Castellón | 2,367 | 324 | 16,584 | 3,827 | 7.58 | 11,715 | 2,217 | 5.62 | 10.61 | 10.30 | 127 |
| Isla de La Gomera | 678 | 804 | 3,044 | 9,581 | 8.51 | 2,375 | 839 | 17.14 | 28.02 | 28.09 | 157 |
| Isla de Mallorca | 967 | 474 | 6,653 | 5,591 | 8.50 | 2,429 | 595 | 16.26 | 31.01 | 30.69 | 216 |

5. Travellers, overnight stays, capacity, occupancy, total number of staff from tourist sites with greater number at overnights stays

| Tourist sites | Travellers | | Overnight stays | | | Capacity | | Level of occupancy | | | Employed personnel |
|---------------------------|--------------------|------------------|--------------------|------------------|--------------|----------------------|----------------------------|--------------------|----------------------|---------------------------------|--------------------|
| | Residents in Spain | Residents abroad | Residents in Spain | Residents abroad | Average stay | Estimated bed-places | Estimated holiday dwelling | Per bed-places | Per Holiday dwelling | Per Holiday dwelling at weekend | |
| San Bartolomé de Tirajana | 4,018 | 6,039 | 17,841 | 71,822 | 8.92 | 17,035 | 5,422 | 16.96 | 26.73 | 27.53 | 1,068 |
| Madrid | 6,600 | 1,478 | 41,581 | 23,898 | 8.11 | 7,731 | 3,027 | 27.30 | 36.18 | 36.21 | 241 |
| Arona | 1,622 | 6,534 | 6,070 | 55,021 | 7.49 | 13,358 | 4,134 | 14.74 | 20.55 | 22.09 | 891 |
| Adeje | 2,427 | 8,536 | 6,632 | 51,325 | 5.29 | 8,761 | 2,406 | 21.27 | 35.23 | 37.27 | 545 |
| Tías | 1,968 | 5,464 | 8,466 | 40,435 | 6.58 | 11,135 | 3,305 | 14.15 | 22.30 | 23.23 | 680 |
| Mogán | 515 | 2,935 | 1,758 | 25,602 | 7.93 | 4,960 | 1,320 | 17.80 | 27.01 | 26.53 | 244 |
| Teiguise | 855 | 2,090 | 4,699 | 17,546 | 7.55 | 4,028 | 1,150 | 17.81 | 27.92 | 28.20 | 235 |
| Puerto de la Cruz | 2,659 | 1,445 | 8,198 | 11,788 | 4.87 | 3,399 | 1,362 | 18.89 | 26.34 | 29.48 | 245 |
| Yaiza | 520 | 1,891 | 1,901 | 17,137 | 7.90 | 4,179 | 1,063 | 14.65 | 28.74 | 28.78 | 188 |
| Pájara | 541 | 1,267 | 3,642 | 12,663 | 9.02 | 3,092 | 1,084 | 16.98 | 22.14 | 22.24 | 158 |

6. Travellers and overnight stays by countries of residence

| Countries | Travellers | | Overnight stays | |
|--|------------|--------|-----------------|--------|
| | Total | % | Total | % |
| TOTAL | 153,377 | 100.00 | 933,679 | 100.00 |
| Residents in Spain | 95,885 | 62.52 | 434,920 | 46.58 |
| Residents abroad | 57,492 | 37.48 | 498,759 | 53.42 |
| Total residents abroad | 57,492 | 100.00 | 498,759 | 100.00 |
| Total residents in E.U (excluding Spain) | 28,878 | 50.23 | 268,474 | 53.83 |
| - Germany | 8,409 | 14.63 | 99,110 | 19.87 |
| - Austria | 290 | 0.50 | 2,341 | 0.47 |
| - Belgium | 2,047 | 3.56 | 20,844 | 4.18 |
| -Denmark | 252 | 0.44 | 2,417 | 0.48 |
| - Finland | 189 | 0.33 | 3,138 | 0.63 |
| - France | 4,744 | 8.25 | 29,799 | 5.97 |
| - Greece | 36 | 0.06 | 475 | 0.10 |
| - Ireland | 1,845 | 3.21 | 14,281 | 2.86 |
| - Italy | 1,985 | 3.45 | 18,207 | 3.65 |
| - Luxembourg | 104 | 0.18 | 976 | 0.20 |
| - Netherlands | 2,592 | 4.51 | 23,986 | 4.81 |
| - Poland | 1,203 | 2.09 | 8,177 | 1.64 |
| - Portugal | 687 | 1.19 | 7,511 | 1.51 |
| - United Kingdom | 650 | 1.13 | 4,687 | 0.94 |
| - Czech Republic | 1,777 | 3.09 | 17,244 | 3.46 |
| - Sweden | 2,068 | 3.60 | 15,281 | 3.06 |
| - Other EU countries | 323 | 0.56 | 4,162 | 0.83 |
| Norway | 21,090 | 36.68 | 159,475 | 31.97 |
| United Kingdom | 549 | 0.95 | 2,818 | 0.57 |
| Switzerland | 747 | 1.30 | 7,835 | 1.57 |
| Other european countries | 1,144 | 1.99 | 9,220 | 1.85 |
| United States of America | 483 | 0.84 | 2,749 | 0.55 |
| Rest of America | 1,829 | 3.18 | 25,138 | 5.04 |
| African countries | 765 | 1.33 | 6,017 | 1.21 |
| Other countries | 1,686 | 2.93 | 12,873 | 2.58 |

Tourist Accommodation Occupancy Survey Campsite Occupancy Survey (COS)

December 2020

Provisional data

1st February 2021

1. Travellers, overnight stays and average stay by category of establishment

| Category | Travellers | | | Overnight stays | | | Average stay |
|------------------------|------------|--------------------|------------------|-----------------|--------------------|------------------|--------------|
| | Total | Residents in Spain | Residents abroad | Total | Residents in Spain | Residents abroad | |
| TOTAL | 78,784 | 67,533 | 11,251 | 612,961 | 256,724 | 356,237 | 7.78 |
| Luxury and first-class | 30,914 | 27,188 | 3,727 | 240,554 | 108,436 | 132,118 | 7.78 |
| Second-class | 43,476 | 36,975 | 6,501 | 350,486 | 138,306 | 212,181 | 8.06 |
| Third-class | 4,394 | 3,370 | 1,024 | 21,921 | 9,982 | 11,939 | 4.99 |
| Annual rate | -57.85 | -48.42 | -79.91 | -50.55 | -32.64 | -58.51 | 17.31 |
| Cumulative annual rate | -45.49 | -29.01 | -78.16 | -46.71 | -28.40 | -66.77 | -2.24 |

2. Open establishments, capacity, occupancy and number of staff by category of establishments

| Category | Estimated open establishments | Capacity | | Occupied pitches | Occupancy rate per pitch | Weekend occupancy rate | Employed personnel |
|------------------------|-------------------------------|---------------------|-------------------|------------------|--------------------------|------------------------|--------------------|
| | | Estimated bedplaces | Estimated pitches | | | | |
| TOTAL | 379 | 228,887 | 73,315 | 737,768 | 32.46 | 30.99 | 2,360 |
| Luxury and first-class | 95 | 94,283 | 29,258 | 259,876 | 28.65 | 28.76 | 973 |
| Second-class | 224 | 122,006 | 39,757 | 435,540 | 35.34 | 33.05 | 1,252 |
| Third-class | 60 | 12,599 | 4,300 | 42,352 | 31.77 | 27.72 | 134 |
| Annual rate | -17.39 | -16.12 | -15.56 | -28.50 | -15.33 | -20.51 | -27.69 |
| Cumulative annual rate | -32.47 | -32.68 | -32.48 | -39.83 | -11.07 | -12.46 | -35.92 |

3. Travellers, overnight stays and average stay by Autonomous Cities and Communities

| Autonomous cities and communities | Travellers | | | Overnight stays | | | Average stay |
|-----------------------------------|------------|--------------------|------------------|-----------------|--------------------|------------------|--------------|
| | Total | Residents in Spain | Residents abroad | Total | Residents in Spain | Residents abroad | |
| TOTAL | 78,784 | 67,533 | 11,251 | 612,961 | 256,724 | 356,237 | 7.78 |
| Andalucía | 11,011 | 7,762 | 3,249 | 95,223 | 31,489 | 63,735 | 8.65 |
| Aragón | 605 | 567 | 38 | 3,810 | 3,313 | 498 | 6.30 |
| Asturias, Principado de | - | - | - | - | - | - | - |
| Balears, Illes1 | - | - | - | - | - | - | - |
| Canarias1 | 858 | 638 | 220 | 5,950 | 1,663 | 4,287 | 6.93 |
| Cantabria | - | - | - | - | - | - | - |
| Castilla y León | 307 | 238 | 69 | 485 | 410 | 75 | 1.58 |
| Castilla - La Mancha | 214 | 212 | 2 | 640 | 638 | 2 | 2.99 |
| Cataluña | 22,310 | 21,191 | 1,120 | 77,220 | 71,396 | 5,824 | 3.46 |
| Comunitat Valenciana | 27,683 | 22,199 | 5,484 | 337,152 | 94,391 | 242,761 | 12.18 |
| Extremadura | 499 | 434 | 65 | 1,302 | - | - | 2.61 |
| Galicia | 67 | 61 | 6 | 112 | - | - | 1.69 |
| Madrid, Comunidad de | 11,375 | 11,207 | 168 | 40,502 | 40,069 | 433 | 3.56 |
| Murcia, Región de | 2,578 | 2,014 | 565 | 45,237 | 7,379 | 37,858 | 17.54 |
| Navarra, Comunidad Foral de | 712 | 630 | 82 | 2,022 | - | - | 2.84 |
| País Vasco | 460 | 286 | 174 | 2,327 | 1,686 | 641 | 5.06 |
| Rioja, La | - | - | - | - | - | - | - |
| Ceuta | - | - | - | - | - | - | - |
| Melilla | - | - | - | - | - | - | - |

1 The size of the sample in these communities does not facilitate the INE the broken down results, with the objective of maintaining statistical secrecy. Nevertheless, the data corresponding to these communities are included in the national total.

4. Open establishments, capacity, occupancy and number of staff by autonomous cities and communities

| Autonomous cities and communities | Estimated open establishments | Capacity | | Occupied pitches | Occupancy rate per pitch | Weekend occupancy rate | Employed personnel |
|-----------------------------------|-------------------------------|---------------------|-------------------|------------------|--------------------------|------------------------|--------------------|
| | | Estimated bedplaces | Estimated pitches | | | | |
| TOTAL | 379 | 228,887 | 73,315 | 737,768 | 32.46 | 30.99 | 2,360 |
| Andalucía | 88 | 49,474 | 15,873 | 112,055 | 22.77 | 22.28 | 504 |
| Aragón | 24 | 10,296 | 3,219 | 20,781 | 20.82 | 22.85 | 107 |
| Asturias, Principado de | - | - | - | - | - | - | - |
| Balears, Illes1 | - | - | - | - | - | - | - |
| Canarias1 | 5 | 3,201 | 1,393 | 6,311 | 14.61 | 15.12 | 24 |
| Cantabria | - | - | - | - | - | - | - |
| Castilla y León | 11 | 5,080 | 1,803 | 12,254 | 21.93 | 24.25 | 34 |
| Castilla - La Mancha | 9 | 3,048 | 912 | 7,240 | 25.62 | 21.89 | 39 |
| Cataluña | 62 | 37,984 | 12,434 | 134,534 | 34.90 | 30.05 | 372 |
| Comunitat Valenciana | 105 | 68,341 | 21,203 | 275,796 | 41.96 | 40.69 | 775 |
| Extremadura | 6 | 2,318 | 707 | 3,795 | 17.31 | 16.26 | 19 |
| Galicia | 16 | 4,231 | 1,263 | 1,404 | 3.59 | 3.60 | 42 |
| Madrid, Comunidad de | 18 | 16,776 | 5,759 | 79,724 | 44.65 | 42.04 | 188 |
| Murcia, Región de | 17 | 14,880 | 4,882 | 34,184 | 22.59 | 21.43 | 167 |
| Navarra, Comunidad Foral de | 6 | 4,071 | 1,119 | 15,260 | 43.98 | 42.75 | 28 |
| País Vasco | 5 | 3,045 | 943 | 8,382 | 28.67 | 29.47 | 25 |
| Rioja, La | - | - | - | - | - | - | - |
| Ceuta | - | - | - | - | - | - | - |
| Melilla | - | - | - | - | - | - | - |

1 The size of the sample in these communities does not facilitate the INE the broken down results, with the objective of maintaining statistical secrecy. Nevertheless, the data corresponding to these communities are included in the national total.

5. Travellers and overnight stays, average stay, capacity, occupancy and number of staff by provinces with the greatest number of overnight stays1

| Provinces | Travellers | | Overnight stays | | Average stay | Estimated open establishments | Estimated pitches | Occupancy rate per pitch | Employed personnel |
|--------------------|--------------------|------------------|--------------------|------------------|--------------|-------------------------------|-------------------|--------------------------|--------------------|
| | Residents in Spain | Residents abroad | Residents in Spain | Residents abroad | | | | | |
| | Alicante\Alacant | 9,252 | 3,870 | 45,784 | | | | | |
| Valencia\València | 8,871 | 785 | 33,808 | 12,790 | 4.83 | 27 | 4,906 | 38.57 | 171 |
| Málaga | 1,725 | 860 | 10,254 | 29,892 | 15.53 | 28 | 4,365 | 28.84 | 149 |
| Castellón\Castelló | 4,075 | 829 | 14,799 | 22,760 | 7.66 | 30 | 5,860 | 23.23 | 199 |
| Girona | 5,796 | 643 | 24,254 | 4,591 | 4.48 | 21 | 2,793 | 49.21 | 80 |
| Almería | 473 | 1,310 | 5,704 | 20,643 | 14.78 | 21 | 2,877 | 26.30 | 103 |
| Barcelona | 6,211 | 231 | 20,259 | 574 | 3.23 | 19 | 5,425 | 26.28 | 168 |
| Tarragona | 5,633 | 149 | 18,857 | 325 | 3.32 | 9 | 2,109 | 28.29 | 78 |
| Cádiz | 1,418 | 513 | 3,229 | 6,153 | 4.86 | 12 | 2,824 | 18.38 | 89 |
| Lleida | 3,550 | 96 | 8,027 | 334 | 2.29 | 13 | 2,107 | 44.75 | 45 |
| Granada | 999 | 342 | 2,670 | 5,308 | 5.95 | 15 | 2,303 | 17.92 | 61 |
| Huelva | 1,848 | 216 | 4,469 | 1,733 | 3.00 | 5 | 1,956 | 24.34 | 44 |
| Zaragoza | 250 | 34 | 2,457 | 440 | 10.20 | 3 | 373 | 23.26 | 17 |
| Córdoba | 861 | 7 | 2,087 | 7 | 2.41 | 5 | 960 | 10.72 | 27 |
| Huesca | 272 | 4 | 767 | 58 | 2.99 | 14 | 2,106 | 26.80 | 70 |

1 Provinces belonging to uniprovincial Autonomous Communities have not been included because they are reflected in previous tables.

6. Travellers, overnight stays, average stay, open establishments, capacity, occupancy and number of staff from tourist areas with the greatest number of overnight stays

| Tourist areas | Travellers | | Overnight stays | | Average stay | Estimated open establishments | Estimated pitches | Occupancy rate per pitch | Employed personnel |
|---------------------------------|--------------|------------------|-----------------|------------------|--------------|-------------------------------|-------------------|--------------------------|--------------------|
| | Residents in | Residents abroad | Residents in | Residents abroad | | | | | |
| | Spain | | Spain | | | | | | |
| Costa Blanca (Alicante) | 6,289 | 3,608 | 26,606 | 182,159 | 21.09 | 39 | 8,009 | 60.65 | 343 |
| Costa Cálida (Murcia) | 432 | 443 | 4,070 | 34,389 | 31.00 | 9 | 3,876 | 21.43 | 128 |
| Costa del Sol (Málaga) | 1,127 | 853 | 8,349 | 29,101 | 18.91 | 16 | 3,495 | 32.58 | 118 |
| Costa de Castellón | 2,973 | 813 | 8,746 | 22,423 | 8.23 | 27 | 5,498 | 22.47 | 182 |
| Costa Valencia (Valencia) | 2,804 | 665 | 17,830 | 11,968 | 8.59 | 13 | 3,241 | 38.23 | 93 |
| Costa de Almería | 301 | 1,294 | 5,274 | 17,987 | 14.58 | 16 | 2,468 | 24.70 | 80 |
| Costa Brava | 3,245 | 643 | 17,603 | 4,591 | 5.71 | 10 | 1,522 | 51.91 | 49 |
| Pirineus | 8,355 | 95 | 20,515 | 347 | 2.47 | 33 | 4,603 | 44.24 | 137 |
| Costa Daurada | 5,340 | 145 | 18,092 | 293 | 3.35 | 5 | 1,727 | 29.30 | 71 |
| Costa Barcelona 2016 | 2,551 | 219 | 11,581 | 547 | 4.38 | 6 | 3,760 | 19.85 | 99 |
| Costa de la Luz de C diz | 1,043 | 513 | 2,555 | 6,153 | 5.60 | 9 | 2,457 | 16.35 | 79 |
| Costa Tropical (Granada) | 352 | 274 | 1,641 | 5,187 | 10.91 | 6 | 1,199 | 16.76 | 37 |
| Costa de la Luz de Huelva | 1,848 | 216 | 4,469 | 1,733 | 3.00 | 5 | 1,956 | 24.34 | 44 |
| Parque Natural Serra Calderona | 908 | 0 | 3,870 | 321 | 4.62 | 3 | 508 | 72.26 | 14 |
| Parque Natural Los Alcornocales | 307 | 442 | 534 | 2,733 | 4.36 | 5 | 942 | 22.29 | 29 |

7. Travellers, overnight stays, average stay, open establishments, capacity, occupancy and number of staff from tourist sites with the greatest number at overnights stays

| Tourist sites | Travellers | | Overnight stays | | Average stay | Estimated open establishments | Estimated pitches | Occupancy rate per pitch | Employed personnel |
|---------------|--------------|------------------|-----------------|------------------|--------------|-------------------------------|-------------------|--------------------------|--------------------|
| | Residents in | Residents abroad | Residents in | Residents abroad | | | | | |
| | Spain | | Spain | | | | | | |
| Benidorm | 561 | 834 | 4,983 | 109,620 | 31.00 | 9 | 3,869 | 74.58 | 131 |
| Cartagena | 173 | 94 | 1,122 | 18,267 | 31.00 | 3 | 2,555 | 13.01 | 61 |
| Blanes | 373 | 169 | 10,892 | 4,508 | 28.41 | 3 | 607 | 67.05 | 6 |
| Marbella | 508 | 200 | 4,502 | 9,911 | 20.36 | 3 | 1,313 | 37.54 | 31 |
| Mazarrón | 207 | 175 | 1,530 | 12,036 | 31.00 | 3 | 882 | 35.24 | 39 |
| Oliva | 502 | 236 | 5,508 | 6,780 | 16.65 | 5 | 1,267 | 16.21 | 55 |
| Calp | 154 | 992 | 946 | 10,600 | 10.08 | 5 | 485 | 57.49 | 25 |
| Vélez-Málaga | 255 | 175 | 956 | 9,527 | 24.38 | 4 | 879 | 27.82 | 41 |
| Campello, El | 451 | 238 | 3,470 | 6,092 | 13.88 | 5 | 375 | 53.60 | 22 |
| Cabanes | 217 | 234 | 254 | 8,663 | 19.78 | 4 | 1,211 | 12.70 | 31 |
| Benicasim | 769 | 48 | 3,623 | 2,649 | 7.68 | 4 | 881 | 23.48 | 45 |
| Peníscola | 195 | 299 | 791 | 4,226 | 10.16 | 6 | 1,023 | 10.34 | 20 |

8. Travellers and overnight stays by countries of residence

| Countries | Travellers | | Overnight stays | |
|---|------------|--------|-----------------|--------|
| | Total | % | Total | % |
| TOTAL | 78,784 | 100.00 | 612,961 | 100.00 |
| Residents in Spain | 67,533 | 85.72 | 256,724 | 41.88 |
| Residents abroad | 11,251 | 14.28 | 356,237 | 58.12 |
| TOTAL residents abroad | 11,251 | 100.00 | 356,237 | 100.00 |
| TOTAL residents in EU (excluding Spain) | 8,282 | 73.61 | 184,091 | 51.68 |
| - Germany | 3,934 | 34.96 | 81,832 | 22.97 |
| - Austria | 107 | 0.95 | 2,510 | 0.70 |
| - Belgium | 589 | 5.24 | 17,478 | 4.91 |
| - Denmark | 23 | 0.20 | 1,953 | 0.55 |
| - Finland | 36 | 0.32 | 1,962 | 0.55 |
| - France | 1,472 | 13.08 | 24,548 | 6.89 |
| - Greece | 16 | 0.15 | 115 | 0.03 |
| - Ireland | 130 | 1.16 | 3,996 | 1.12 |
| - Italy | 210 | 1.87 | 1,885 | 0.53 |
| - Luxembourg | 82 | 0.73 | 1,327 | 0.37 |
| - Netherlands | 924 | 8.21 | 33,454 | 9.39 |
| - Poland | 266 | 2.37 | 1,015 | 0.28 |
| - Portugal | 121 | 1.07 | 1,739 | 0.49 |
| - Czech Republic | 67 | 0.60 | 399 | 0.11 |
| - Sweden | 206 | 1.83 | 8,859 | 2.49 |
| - Other EU countries | 99 | 0.88 | 1,019 | 0.29 |
| Norway | 18 | 0.16 | 3,319 | 0.93 |
| United Kingdom | 1,880 | 16.71 | 156,627 | 43.97 |
| Russia | - | - | - | - |
| Switzerland | 603 | 5.36 | 8,821 | 2.48 |
| Other European countries | 186 | 1.66 | 678 | 0.19 |
| United States of America | 39 | 0.34 | 181 | 0.05 |
| Rest of America | 51 | 0.45 | 469 | 0.13 |
| African countries | - | - | - | - |
| Other countries | 173 | 1.54 | 1,742 | 0.49 |

1 Non-significant data

**Tourist accommodation occupancy survey
(Rural tourist accommodation)**

December 2020

Provisional data

1st February 2021

1. Number of travellers, overnight stays and average stay by Autonomous City and Community

| Autonomous Communities | Number of travellers | | | Number of overnight stays | | | Average stay |
|-----------------------------|----------------------|--------------------|------------------|---------------------------|--------------------|------------------|--------------|
| | Total | Residents In Spain | Residents abroad | Total | Residents In Spain | Residents abroad | |
| TOTAL | 85,248 | 79,662 | 5,586 | 227,263 | 203,094 | 24,169 | 2.67 |
| Andalucía | 5,790 | 5,258 | 532 | 16,928 | 12,994 | 3,933 | 2.92 |
| Aragón | 2,970 | 2,846 | 124 | 8,582 | 7,899 | 683 | 2.89 |
| Asturias, Principado de | 434 | 347 | 88 | 1,944 | 1,677 | 267 | 4.48 |
| Balears, Illes | 3,476 | 2,755 | 722 | 7,608 | 4,735 | 2,873 | 2.19 |
| Canarias | 4,248 | 2,764 | 1,484 | 16,783 | 8,619 | 8,164 | 3.95 |
| Cantabria | 1,501 | 1,390 | 111 | 3,352 | 3,045 | 306 | 2.23 |
| Castilla y León | 7,125 | 6,870 | 254 | 20,526 | 19,417 | 1,109 | 2.88 |
| Castilla-La Mancha | 3,909 | 3,629 | 281 | 20,635 | 18,230 | 2,405 | 5.28 |
| Cataluña | 17,696 | 17,284 | 412 | 41,622 | 40,801 | 822 | 2.35 |
| Comunitat Valenciana | 12,490 | 12,286 | 205 | 28,878 | 27,923 | 955 | 2.31 |
| Extremadura | 5,688 | 5,548 | 140 | 15,115 | 14,755 | 359 | 2.66 |
| Galicia | 1,429 | 1,414 | 15 | 2,531 | 2,510 | 21 | 1.77 |
| Madrid, Comunidad de | 11,747 | 10,621 | 1,126 | 21,956 | 20,287 | 1,670 | 1.87 |
| Murcia, Región de | 1,423 | 1,422 | 1 | 2,700 | 2,698 | 2 | 1.90 |
| Navarra, Comunidad Foral de | 3,100 | 3,065 | 35 | 11,351 | 11,296 | 56 | 3.66 |
| País Vasco | 1,725 | 1,669 | 56 | 5,312 | 4,768 | 544 | 3.08 |
| Rioja, La | 497 | 497 | 0 | 1,440 | 1,440 | 0 | 2.90 |
| Ceuta | - | - | - | - | - | - | - |
| Melilla | - | - | - | - | - | - | - |
| Annual rate | -75.06 | -74.63 | -79.97 | -74.10 | -73.84 | -76.06 | 3.88 |
| Cumulative annual rate | -53.17 | -46.55 | -79.50 | -46.42 | -34.75 | -77.42 | 14.41 |

2. Open rural establishments, bed-places, occupancy rates and employed personnel by Autonomous City and Community

| Autonomous Communities | Estimated open rural establishments | Estimated bed-places | Occupancy rate | | | Employed personnel |
|-----------------------------|-------------------------------------|----------------------|----------------|--------------------------|-------------|--------------------|
| | | | Of bed-places | Of bed-places at weekend | Of bedrooms | |
| TOTAL | 12,779 | 116,415 | 6.29 | 9.14 | 9.99 | 16,857 |
| Andalucía | 2,037 | 16,417 | 3.32 | 3.98 | 6.54 | 2,659 |
| Aragón | 822 | 6,476 | 4.27 | 4.67 | 7.26 | 896 |
| Asturias, Principado de | 227 | 2,022 | 3.09 | 2.65 | 4.62 | 290 |
| Balears, Illes | 122 | 2,206 | 11.12 | 16.00 | 14.45 | 299 |
| Canarias | 514 | 3,187 | 16.96 | 20.87 | 25.78 | 652 |
| Cantabria | 267 | 3,625 | 2.98 | 4.25 | 4.06 | 441 |
| Castilla y León | 2,717 | 22,714 | 2.91 | 4.12 | 5.48 | 3,332 |
| Castilla-La Mancha | 1,452 | 12,076 | 5.51 | 7.40 | 8.92 | 1,723 |
| Cataluña | 1,576 | 13,676 | 9.80 | 13.26 | 15.46 | 2,075 |
| Comunitat Valenciana | 675 | 7,926 | 11.75 | 18.87 | 20.93 | 1,057 |
| Extremadura | 573 | 6,665 | 7.31 | 13.32 | 11.59 | 792 |
| Galicia | 296 | 3,826 | 2.13 | 3.63 | 3.85 | 473 |
| Madrid, Comunidad de | 222 | 3,437 | 20.52 | 39.17 | 27.25 | 588 |
| Murcia, Región de | 139 | 2,124 | 4.10 | 8.21 | 6.12 | 209 |
| Navarra, Comunidad Foral de | 725 | 5,498 | 6.65 | 9.75 | 10.86 | 887 |
| País Vasco | 323 | 3,632 | 4.71 | 5.01 | 7.96 | 387 |
| Rioja, La | 91 | 908 | 5.11 | 5.71 | 8.67 | 97 |
| Ceuta | - | - | - | - | - | - |
| Melilla | - | - | - | - | - | - |
| Annual rate | -23.80 | -26.21 | -64.78 | -71.14 | -54.25 | -27.98 |
| Cumulative annual rate | -32.23 | -33.65 | -19.39 | -27.37 | -13.08 | -30.98 |

3. Number of travellers, overnight stays and average stay in Provinces with the greatest number of overnight stays¹

| Provinces | Number of travellers | | | Number of overnight stays | | | Average stay |
|---------------------|----------------------|--------------------|------------------|---------------------------|--------------------|------------------|--------------|
| | Total | Residents In Spain | Residents abroad | Total | Residents In Spain | Residents abroad | |
| Girona | 7,232 | 6,995 | 237 | 16,952 | 16,515 | 436 | 2.34 |
| St Cruz de Tenerife | 2,821 | 1,767 | 1,054 | 12,541 | 6,184 | 6,358 | 4.45 |
| Cáceres | 4,599 | 4,487 | 113 | 12,432 | 12,126 | 305 | 2.70 |
| Castellón\Castelló | 4,754 | 4,747 | 6 | 12,219 | 12,199 | 20 | 2.57 |
| Barcelona | 4,860 | 4,838 | 22 | 10,498 | 10,476 | 22 | 2.16 |
| Lleida | 3,617 | 3,487 | 130 | 10,274 | 9,934 | 339 | 2.84 |
| Valencia\València | 3,842 | 3,810 | 32 | 8,620 | 8,149 | 472 | 2.24 |
| Alicante\Alacant | 3,895 | 3,728 | 167 | 8,038 | 7,575 | 463 | 2.06 |
| Málaga | 2,310 | 1,895 | 414 | 8,026 | 4,533 | 3,493 | 3.47 |
| Albacete | 1,056 | 1,056 | 0 | 6,152 | 6,152 | 0 | 5.83 |
| Zaragoza | 1,849 | 1,832 | 16 | 5,056 | 4,878 | 178 | 2.74 |
| Cuenca | 686 | 651 | 34 | 4,470 | 2,735 | 1,734 | 6.52 |
| Toledo | 311 | 311 | 0 | 4,429 | 4,429 | 0 | 14.23 |
| Palmas, Las | 1,427 | 997 | 430 | 4,242 | 2,435 | 1,807 | 2.97 |
| Tarragona | 1,987 | 1,963 | 23 | 3,899 | 3,875 | 23 | 1.96 |

¹ Provinces belonging to uniprovincial Autonomous Communities have not been included because they are reflected in previous tables.

4. Open rural establishments, bed-places, occupancy rates and employed personnel in Provinces with the highest number of overnight stays¹

| Provinces | Estimated open rural establishments | Estimated bed-places | Occupancy rate | | | Employed personnel |
|---------------------|-------------------------------------|----------------------|----------------|--------------------------|-------------|--------------------|
| | | | Of bed-places | Of bed-places at weekend | Of bedrooms | |
| Girona | 491 | 4,912 | 11.12 | 12.30 | 18.85 | 566 |
| St Cruz de Tenerife | 442 | 2,552 | 15.84 | 17.53 | 24.54 | 516 |
| Cáceres | 434 | 5,041 | 7.95 | 14.35 | 12.25 | 598 |
| Castellón\Castelló | 299 | 2,934 | 13.43 | 20.59 | 21.53 | 432 |
| Barcelona | 437 | 3,674 | 9.21 | 20.92 | 12.90 | 637 |
| Lleida | 410 | 2,952 | 11.22 | 11.65 | 17.20 | 600 |
| Valencia\València | 204 | 3,129 | 8.89 | 14.21 | 18.50 | 356 |
| Alicante\Alacant | 172 | 1,864 | 13.91 | 23.98 | 24.15 | 269 |
| Málaga | 1,205 | 7,995 | 3.24 | 3.15 | 7.15 | 1,555 |
| Albacete | 659 | 4,184 | 4.74 | 6.25 | 8.35 | 756 |
| Zaragoza | 176 | 1,454 | 11.20 | 14.84 | 16.12 | 187 |
| Cuenca | 227 | 2,144 | 6.72 | 10.66 | 12.79 | 251 |
| Toledo | 167 | 1,772 | 8.06 | 8.24 | 10.87 | 204 |
| Palmas, Las | 72 | 636 | 21.49 | 34.30 | 30.78 | 136 |
| Tarragona | 237 | 2,138 | 5.85 | 4.51 | 9.60 | 272 |

¹ Provinces belonging to uniprovincial Autonomous Communities have not been included because they are reflected in previous tables.

5. Number of travellers, overnight stays, average stay, capacity and occupancy rates in areas with the highest number of overnight stays

| Areas | Number of travellers | | Number of overnight stays | | Average stay | Capacity | | Occupancy rate | | |
|---|----------------------|------------------|---------------------------|------------------|--------------|---------------------------------|----------------------|----------------|--------------------------|-------------|
| | Residents In Spain | Residents abroad | Residents In Spain | Residents abroad | | Estimated open rural establish. | Estimated bed-places | Of bed-places | Of bed-places at weekend | Of bedrooms |
| Pirineus | 6,123 | 130 | 16,196 | 339 | 2.64 | 580 | 4,751 | 11.22 | 15.25 | 16.80 |
| Costa Brava | 4,847 | 237 | 11,742 | 436 | 2.40 | 321 | 3,091 | 12.70 | 12.81 | 21.54 |
| Pirineo Navarro | 2,924 | 35 | 9,942 | 56 | 3.38 | 607 | 4,526 | 7.11 | 11.26 | 11.05 |
| Extremadura Norte | 3,379 | 47 | 8,631 | 212 | 2.58 | 278 | 3,268 | 8.73 | 15.79 | 13.64 |
| Parque Nacional Sierra de Guadarrama | 4,188 | 947 | 7,119 | 1,383 | 1.66 | 91 | 1,221 | 22.46 | 38.61 | 24.41 |
| Isla de Mallorca | 1,897 | 619 | 3,331 | 2,645 | 2.38 | 106 | 1,933 | 9.97 | 14.02 | 13.40 |
| Isla de La Palma | 384 | 453 | 1,991 | 2,984 | 5.94 | 245 | 1,068 | 15.01 | 14.00 | 25.00 |
| P.Natural Sierras de Tejeda, Almijá | 335 | 126 | 1,468 | 2,684 | 9.00 | 389 | 2,516 | 5.32 | 4.58 | 13.21 |
| Isla de Tenerife | 979 | 430 | 2,298 | 1,742 | 2.87 | 90 | 921 | 14.14 | 18.97 | 17.66 |
| P.Natural de Los Calares del Mundo y de la Sima | 171 | 0 | 3,963 | 0 | 23.17 | 213 | 1,126 | 11.36 | 13.89 | 20.49 |
| P.Natural de Corona Forestal | 910 | 372 | 2,120 | 1,408 | 2.75 | 65 | 699 | 16.28 | 22.03 | 19.41 |
| P.Nacional Teide | 634 | 324 | 1,586 | 1,256 | 2.97 | 57 | 625 | 14.66 | 20.42 | 17.18 |
| Costa Daurada | 1,326 | 23 | 2,677 | 23 | 2.00 | 164 | 1,563 | 5.57 | 4.76 | 10.09 |
| P.Nacional Taburiente | 180 | 315 | 1,001 | 1,652 | 5.35 | 144 | 636 | 13.43 | 12.77 | 23.26 |
| P.Nacional Garajonay | 257 | 159 | 1,030 | 1,502 | 6.07 | 66 | 396 | 20.62 | 22.61 | 36.77 |

6. Number of travellers, overnight stays, average stay, capacity, occupancy rates and employed personnel per rural house by Autonomous City and Community²

| Autonomous Communities | Number of travellers | | Number of overnight stays | | Average stay | Capacity | | Occupancy rate | | Employed personnel |
|-----------------------------|----------------------|------------------|---------------------------|------------------|--------------|---------------------------------|----------------------|----------------|--------------------------|--------------------|
| | Residents In Spain | Residents abroad | Residents In Spain | Residents abroad | | Estimated open rural establish. | Estimated bed-places | Of bed-places | Of bed-places at weekend | |
| TOTAL | 58,207 | 3,390 | 156,720 | 18,740 | 2.85 | 11,394 | 93,854 | 6.03 | 8.43 | 14,265 |
| Andalucía | 5,220 | 532 | 12,923 | 3,933 | 2.93 | 2,032 | 16,212 | 3.35 | 4.02 | 2,639 |
| Aragón | 2,433 | 122 | 6,582 | 677 | 2.84 | 690 | 5,284 | 4.43 | 4.85 | 765 |
| Asturias, Principado de | - | - | - | - | - | - | - | - | - | - |
| Balears, Illes | 1,673 | 603 | 2,950 | 2,199 | 2.26 | 61 | 1,040 | 15.97 | 18.17 | 141 |
| Canarias | 1,548 | 1,039 | 6,216 | 6,788 | 5.03 | 494 | 2,610 | 16.05 | 18.81 | 550 |
| Cantabria | 458 | 11 | 1,322 | 32 | 2.89 | 161 | 1,791 | 2.44 | 3.80 | 276 |
| Castilla y León | 5,068 | 123 | 15,861 | 860 | 3.22 | 2,501 | 18,455 | 2.92 | 4.35 | 2,888 |
| Castilla-La Mancha | 3,579 | 278 | 18,113 | 2,390 | 5.32 | 1,430 | 11,547 | 5.73 | 7.67 | 1,697 |
| Cataluña | 17,284 | 412 | 40,801 | 822 | 2.35 | 1,576 | 13,676 | 9.80 | 13.26 | 2,075 |
| Comunitat Valenciana | 11,033 | 196 | 25,679 | 875 | 2.36 | 637 | 5,780 | 14.81 | 23.38 | 956 |
| Extremadura | 2,777 | 46 | 7,182 | 63 | 2.57 | 359 | 3,305 | 7.07 | 14.03 | 435 |
| Galicia | 1,108 | 3 | 1,988 | 6 | 1.79 | 236 | 2,933 | 2.19 | 3.86 | 368 |
| Madrid, Comunidad de | 1,391 | 12 | 3,665 | 37 | 2.64 | 85 | 976 | 12.23 | 18.32 | 95 |
| Murcia, Región de | 1,252 | 0 | 2,457 | 0 | 1.96 | 133 | 1,899 | 4.17 | 8.62 | 192 |
| Navarra, Comunidad Foral de | 2,003 | 0 | 6,963 | 0 | 3.48 | 600 | 4,706 | 4.77 | 7.31 | 735 |
| País Vasco | 883 | 13 | 2,579 | 58 | 2.94 | 184 | 2,006 | 4.24 | 4.26 | 227 |
| Rioja, La | 497 | 0 | 1,440 | 0 | 2.90 | 91 | 908 | 5.11 | 5.71 | 97 |
| Ceuta | - | - | - | - | - | - | - | - | - | - |
| Melilla | - | - | - | - | - | - | - | - | - | - |

² To facilitate the comparability between data from different Autonomous Communities (and because of the different regulation and different characteristics), a group called rural house has been created, with those establishments with similar typology (location, capacity, etc...).

The variables included in the previous table have been estimated with that type of establishments.

9. Travellers and overnight stays by country of residence

| Results by countries | Travellers | | Overnight stays | |
|---|------------|--------|-----------------|--------|
| | Total | % | Total | % |
| TOTAL | 85,248 | 100.00 | 227,263 | 100.00 |
| Residents in Spain | 79,662 | 93.45 | 203,094 | 89.37 |
| Residents abroad | 5,586 | 6.55 | 24,169 | 10.63 |
| Total Residents abroad | 5,586 | 100.00 | 24,169 | 100.00 |
| TOTAL Residents in EU-27 ¹ (without Spain) | 2,945 | 52.72 | 14,808 | 61.27 |
| - Germany | 962 | 17.22 | 5,798 | 23.99 |
| - Belgium | 246 | 4.40 | 729 | 3.02 |
| - France | 843 | 15.08 | 2,502 | 10.35 |
| - Italy | 165 | 2.96 | 673 | 2.79 |
| - Netherlands | 198 | 3.55 | 709 | 2.93 |
| - Portugal | 255 | 4.56 | 3,048 | 12.61 |
| United Kingdom | 626 | 11.21 | 4,424 | 18.30 |
| Switzerland | 156 | 2.79 | 603 | 2.50 |
| Other European countries | 550 | 9.84 | 2,199 | 9.10 |
| United States of America | 60 | 1.07 | 171 | 0.71 |
| Other countries | 1,526 | 27.32 | 3,313 | 13.71 |

¹ Since 31 January 2020, The United Kingdom is no longer part of the E.U., hence the aggregate UE-27 is published.

Tourist Accommodation Occupancy Survey Hostels Occupancy Survey (HOS)

December 2020

Provisional data

1st February 2021

1. Travellers, overnight stays and average stay by Autonomous Cities and Communities

| Autonomous cities and communities | Travellers | | | Overnight stays | | | Average stay |
|-----------------------------------|------------|--------------------|------------------|-----------------|--------------------|------------------|--------------|
| | Total | Residents in Spain | Residents abroad | Total | Residents in Spain | Residents abroad | |
| TOTAL | 5,190 | 3,740 | 1,450 | 25,529 | 17,326 | 8,203 | 4.92 |
| Andalucía | 993 | 993 | 0 | 8,668 | 8,668 | 0 | 8.73 |
| Aragón | 82 | 80 | 2 | 358 | 355 | 3 | 4.37 |
| Asturias, Principado de | - | - | - | - | - | - | - |
| Balears, Illes | - | - | - | - | - | - | - |
| Canarias | 977 | 194 | 783 | 5,655 | 610 | 5,046 | 5.79 |
| Cantabria | - | - | - | - | - | - | - |
| Castilla y León | - | - | - | - | - | - | - |
| Castilla - La Mancha | - | - | - | - | - | - | - |
| Cataluña | 1,219 | 884 | 336 | 4,003 | 2,484 | 1,519 | 3.28 |
| Comunitat Valenciana | 449 | 323 | 126 | 3,247 | 2,313 | 934 | 7.23 |
| Extremadura | - | - | - | - | - | - | - |
| Galicia | - | - | - | - | - | - | - |
| Madrid, Comunidad de | 767 | 592 | 175 | 1,722 | 1,169 | 553 | 2.25 |
| Murcia, Región de | - | - | - | - | - | - | - |
| Navarra, Comunidad Foral de | - | - | - | - | - | - | - |
| País Vasco | 190 | 171 | 18 | 522 | 425 | 97 | 2.75 |
| Rioja, La | - | - | - | - | - | - | - |
| Ceuta | - | - | - | - | - | - | - |
| Melilla | - | - | - | - | - | - | - |
| Annual rate | -89.50 | -88.23 | -91.79 | -81.41 | -80.02 | -83.80 | 77.03 |
| Cumulative annual rate | -78.57 | -76.14 | -83.31 | -74.90 | -73.50 | -77.89 | 17.12 |

2. Open establishments, capacity, occupancy and number of staff by autonomous cities and communities

| Autonomous cities and communities | Capacity | | Occupancy rate | | Employed personnel |
|-----------------------------------|-------------------------------|----------------------|----------------|--------------------------|--------------------|
| | Estimated open establishments | Estimated bed-places | Of bed-places | Of bed-places at weekend | |
| TOTAL | 100 | 11,036 | 7.46 | 9.58 | 775 |
| Andalucía | 8 | 2,060 | 13.57 | 17.57 | 154 |
| Aragón | 11 | 1,096 | 1.05 | 1.08 | 59 |
| Asturias, Principado de | - | - | - | - | - |
| Balears, Illes | - | - | - | - | - |
| Canarias | 17 | 447 | 40.79 | 47.75 | 38 |
| Cantabria | - | - | - | - | - |
| Castilla y León | - | - | - | - | - |
| Castilla - La Mancha | - | - | - | - | - |
| Cataluña | 10 | 1,028 | 12.57 | 13.35 | 84 |
| Comunitat Valenciana | 7 | 1,285 | 8.15 | 8.71 | 55 |
| Extremadura | - | - | - | - | - |
| Galicia | - | - | - | - | - |
| Madrid, Comunidad de | 4 | 490 | 11.34 | 22.66 | 149 |
| Murcia, Región de | - | - | - | - | - |
| Navarra, Comunidad Foral de | - | - | - | - | - |
| País Vasco | 9 | 1,272 | 1.32 | 2.05 | 60 |
| Rioja, La | - | - | - | - | - |
| Ceuta | - | - | - | - | - |
| Melilla | - | - | - | - | - |
| Annual rate | -49.29 | -44.25 | -66.67 | -70.21 | -49.30 |
| Cumulative annual rate | -52.14 | -50.58 | -49.09 | -45.73 | -47.96 |

3. Travellers and overnight stays by countries of residence

| Countries | Travellers | | Overnight stays | | Average stay |
|---|------------|--------|-----------------|--------|--------------|
| | Total | % | Total | % | |
| TOTAL | 5,190 | 100.00 | 25,529 | 100.00 | 4.92 |
| Residents in Spain | 3,740 | 72.06 | 17,326 | 67.87 | 4.63 |
| Residents abroad | 1,450 | 27.94 | 8,203 | 32.13 | 5.66 |
| TOTAL residents abroad | 1,450 | 100.00 | 8,203 | 100.00 | 5.66 |
| TOTAL Residents in EU-27 ¹ (without Spain) | 783 | 54.02 | 3,166 | 38.59 | 4.04 |
| - Germany | 230 | 15.89 | 1,008 | 12.28 | 4.37 |
| - Belgium | 54 | 3.75 | 232 | 2.83 | 4.28 |
| - France | 209 | 14.43 | 849 | 10.34 | 4.06 |
| - Italy | 83 | 5.75 | 299 | 3.65 | 3.59 |
| - Netherlands | 33 | 2.26 | 112 | 1.36 | 3.42 |
| - Portugal | - | - | - | - | - |
| United Kingdom | 134 | 9.21 | 563 | 6.87 | 4.22 |
| Switzerland | 30 | 2.06 | 169 | 2.06 | 5.65 |
| Other European countries | 271 | 18.67 | 1,223 | 14.91 | 4.52 |
| United States of America | - | - | - | - | - |
| Other countries | 381 | 26.26 | 3,634 | 44.30 | 9.54 |

¹ Since 31 January 2020, The United Kingdom is no longer part of the E.U., hence the aggregate UE-27 is published.

HOLIDAY DWELLING PRICE INDEX (HDPI)

December 2020

Provisional data

1th February 2021

National general index and breakdown by rates

| | Index | Annual variation rate |
|------------------------------------|--------|--------------------------|
| TOTAL | 120.12 | -13.07 |
| Normal | 117.30 | -9.93 |
| Weekend | 103.04 | -17.82 |
| Tour-operators and travel agencies | 124.96 | -14.35 |

National general index and breakdown by modalities

| | Index | Annual variation rate |
|-------------------------|--------|--------------------------|
| TOTAL | 120.12 | -13.07 |
| Studio | 119.02 | -14.33 |
| Dwellings 2/4 bedplaces | 118.34 | -14.80 |
| Dwellings 4/6 bedplaces | 128.65 | -6.32 |

HDPI (ANNEX OF TABLES) - December 2020. Provisional data

Tourist Campsite Price Index (TCSPI). 2002 Base

December 2020

Provisional data

1st February 2021

National general index and breakdown by rates

| | Index | Annual variation rate |
|--|--------|--------------------------|
| TOTAL | 143.09 | 0.11 |
| Normal rate | 144.12 | 1.08 |
| Special rate for stays up to one month | 140.80 | 0.77 |
| Special rate for stays longer than one month | 151.83 | -0.75 |
| Bungalow rate ¹ | 101.12 | -0.20 |

¹2014 Base

National general index and breakdown by categories

| | Index | Annual variation rate |
|------------------|--------|--------------------------|
| TOTAL | 143.09 | 0.11 |
| Luxury and first | 145.26 | 0.99 |
| Second | 139.41 | -0.81 |
| Third | 184.07 | 1.48 |

TCSPI (ANNEX OF TABLES) - December 2020. Provisional data

Rural Tourism Accommodation Price Index (RTAPI)

December 2020

Provisional data

1st February 2021

General Autonomous Cities and Communities and national indices

| | Index | Annual variation rate |
|-----------------------------|--------|-----------------------|
| TOTAL | 138.86 | -2.58 |
| Andalucía | 141.22 | 1.24 |
| Aragón | 163.41 | 0.72 |
| Asturias, Principado de | 128.11 | -9.28 |
| Balears, Illes | 78.61 | -13.11 |
| Canarias | 108.77 | -3.14 |
| Cantabria | 160.06 | 5.92 |
| Castilla y León | 141.03 | -1.47 |
| Castilla - La Mancha | 130.57 | -5.39 |
| Cataluña | 141.23 | -3.35 |
| Comunitat Valenciana | 147.78 | -2.10 |
| Extremadura | 97.74 | -3.10 |
| Galicia | 138.65 | -5.32 |
| Madrid, Comunidad de | 148.25 | 0.07 |
| Murcia, Región de | 158.29 | 3.02 |
| Navarra, Comunidad Foral de | 184.55 | -4.87 |
| País Vasco | 152.89 | -1.71 |
| Rioja, La | 148.60 | -4.57 |
| Ceuta | - | - |
| Melilla | - | - |

National general index and breakdown by rates

| | Index | Annual variation rate |
|---------|--------|-----------------------|
| TOTAL | 138.86 | -2.58 |
| Normal | 138.74 | -2.38 |
| Weekend | 140.82 | -2.78 |

National general index and breakdown by rent modality

| | Index | Annual variation rate |
|--|--------|-----------------------|
| TOTAL | 138.86 | -2.58 |
| Shared use (in case of per room rent modality) | 121.96 | -0.48 |
| Full use (rent of entire dwelling) | 143.74 | -2.88 |

Tourist Accommodation Occupancy Survey (Holiday Dwellings)

Year 2020

Provisional data

1st February 2021

1. Travellers, overnight stays and average stay by Autonomous Cities and Communities

| Autonomous Cities and Communities | Travellers | | | Overnight stays | | | Average stay |
|-----------------------------------|------------|--------------------|------------------|-----------------|--------------------|------------------|--------------|
| | Total | Residents in Spain | Residents abroad | Total | Residents in Spain | Residents abroad | |
| TOTAL | 4,165,348 | 2,547,905 | 1,617,443 | 23,459,959 | 11,116,565 | 12,343,394 | 5.63 |
| Andalucía | 917,158 | 649,812 | 267,346 | 3,657,923 | 2,236,097 | 1,421,826 | 3.99 |
| Aragón | 107,773 | 101,011 | 6,761 | 387,428 | 351,199 | 36,229 | 3.59 |
| Asturias, Principado de | 47,731 | 46,417 | 1,314 | 207,061 | 201,859 | 5,201 | 4.34 |
| Balears, Illes | 230,414 | 122,741 | 107,673 | 1,275,536 | 596,731 | 678,806 | 5.54 |
| Canarias | 1,151,695 | 349,901 | 801,794 | 8,626,187 | 1,467,608 | 7,158,579 | 7.49 |
| Cantabria | 83,100 | 80,435 | 2,665 | 374,411 | 363,846 | 10,565 | 4.51 |
| Castilla y León | 83,980 | 78,586 | 5,394 | 223,039 | 202,365 | 20,674 | 2.66 |
| Castilla - La Mancha | 56,669 | 54,995 | 1,674 | 229,455 | 219,141 | 10,314 | 4.05 |
| Cataluña | 427,149 | 298,692 | 128,457 | 2,469,247 | 1,624,719 | 844,528 | 5.78 |
| Comunitat Valenciana | 582,652 | 393,967 | 188,685 | 3,855,035 | 2,306,872 | 1,548,163 | 6.62 |
| Extremadura | 58,937 | 55,108 | 3,829 | 131,170 | 124,693 | 6,477 | 2.23 |
| Galicia | 89,485 | 82,422 | 7,063 | 356,437 | 320,406 | 36,031 | 3.98 |
| Madrid, Comunidad de | 174,437 | 102,359 | 72,078 | 861,113 | 468,188 | 392,925 | 4.94 |
| Murcia, Región de | 51,936 | 45,010 | 6,927 | 372,146 | 313,269 | 58,877 | 7.17 |
| Navarra, Comunidad Foral de | 35,675 | 30,728 | 4,947 | 126,737 | 104,806 | 21,931 | 3.55 |
| País Vasco | 50,370 | 40,536 | 9,834 | 258,563 | 169,052 | 89,511 | 5.13 |
| Rioja, La | 16,187 | 15,185 | 1,002 | 48,470 | 45,713 | 2,757 | 2.99 |
| Ceuta | - | - | - | - | - | - | - |
| Melilla | - | - | - | - | - | - | - |
| Annual rate | -66.62 | -46.61 | -79.01 | -67.14 | -42.30 | -76.32 | -1.54 |

2. Capacity, occupancy and number of staff by Autonomous Cities and Communities

| Autonomous Cities and Communities | Capacity ¹ | | Level of occupancy ² | | | | Employed personnel ¹ |
|-----------------------------------|-----------------------|----------------------------|---------------------------------|--------------------------|----------------------|---------------------------------|---------------------------------|
| | Estimated bedplaces | Estimated Holiday dwelling | Per bedplaces | Per bedplaces at weekend | Per Holiday dwelling | Per Holiday dwelling at weekend | |
| TOTAL | 328,211 | 83,038 | 21.23 | 23.24 | 34.17 | 36.60 | 15,781 |
| Andalucía | 55,431 | 13,673 | 19.61 | 23.00 | 30.63 | 34.96 | 2,946 |
| Aragón | 5,840 | 1,372 | 19.66 | 26.75 | 29.62 | 37.76 | 426 |
| Asturias, Principado de | 3,048 | 768 | 20.02 | 23.20 | 27.42 | 31.21 | 222 |
| Balears, Illes | 14,106 | 4,315 | 26.51 | 26.68 | 35.60 | 35.73 | 982 |
| Canarias | 80,691 | 25,115 | 31.88 | 32.88 | 46.19 | 47.31 | 5,560 |
| Cantabria | 3,552 | 903 | 30.74 | 34.90 | 42.98 | 48.10 | 318 |
| Castilla y León | 4,607 | 1,124 | 14.34 | 20.17 | 23.03 | 29.99 | 409 |
| Castilla - La Mancha | 4,258 | 1,028 | 16.05 | 22.98 | 27.75 | 36.46 | 325 |
| Cataluña | 35,079 | 7,790 | 20.83 | 23.65 | 32.72 | 36.53 | 974 |
| Comunitat Valenciana | 92,945 | 18,789 | 12.30 | 13.42 | 21.19 | 22.88 | 1,790 |
| Extremadura | 2,784 | 673 | 14.01 | 19.21 | 21.90 | 28.55 | 396 |
| Galicia | 4,249 | 1,139 | 24.76 | 26.38 | 37.21 | 39.22 | 289 |
| Madrid, Comunidad de | 7,842 | 2,982 | 32.73 | 34.25 | 45.83 | 46.47 | 335 |
| Murcia, Región de | 6,872 | 1,653 | 16.13 | 17.21 | 26.54 | 27.77 | 183 |
| Navarra, Comunidad Foral de | 1,717 | 431 | 21.85 | 25.64 | 39.78 | 42.50 | 319 |
| País Vasco | 3,812 | 978 | 20.11 | 22.78 | 37.43 | 39.87 | 221 |
| Rioja, La | 1,379 | 305 | 10.45 | 16.12 | 18.98 | 26.80 | 84 |
| Ceuta | - | - | - | - | - | - | - |
| Melilla | - | - | - | - | - | - | - |
| Annual rate | -35.37 | -37.35 | -44.38 | -43.73 | -40.64 | -40.19 | -44.63 |

¹ Annual average.

² Occupancy rate is weighted by number of bedplaces or by number of appartments

3. Travellers, overnight stays, capacity, occupancy, total number of staff with greater number of overnight stays¹

| Provinces | Travellers | | Overnight stays | | Average stay | Capacity ² | | Level of occupancy ³ | | | Employed personnel ² |
|------------------------|--------------------|------------------|--------------------|------------------|--------------|-----------------------|----------------------------|---------------------------------|----------------------|---------------------------------|---------------------------------|
| | Residents in Spain | Residents abroad | Residents in Spain | Residents abroad | | Estimated bed-places | Estimated holiday dwelling | Per bed-places | Per Holiday dwelling | Per Holiday dwelling at weekend | |
| Palmas, Las | 175,722 | 472,698 | 806,550 | 4,415,451 | 8.05 | 49,140 | 15,017 | 31.70 | 47.34 | 48.04 | 3,251 |
| Santa Cruz de Tenerife | 174,179 | 329,095 | 661,058 | 2,743,128 | 6.76 | 31,550 | 10,099 | 32.16 | 44.48 | 46.24 | 2,309 |
| Alicante | 174,490 | 114,390 | 1,035,940 | 1,133,439 | 7.51 | 61,139 | 12,512 | 10.54 | 18.32 | 19.56 | 1,193 |
| Málaga | 222,822 | 168,637 | 829,488 | 1,100,290 | 4.93 | 31,124 | 7,301 | 18.46 | 30.77 | 33.35 | 1,619 |
| Girona | 127,637 | 58,384 | 649,083 | 395,255 | 5.61 | 18,165 | 3,778 | 16.86 | 23.71 | 26.64 | 381 |
| Castellón | 123,412 | 18,790 | 721,688 | 158,487 | 6.19 | 17,652 | 3,309 | 14.67 | 23.85 | 26.32 | 241 |
| Barcelona | 55,346 | 46,395 | 516,299 | 306,016 | 8.08 | 6,083 | 1,814 | 40.49 | 60.59 | 64.56 | 299 |
| Valencia/València | 96,064 | 55,505 | 549,244 | 256,237 | 5.31 | 14,154 | 2,968 | 16.89 | 30.32 | 33.05 | 357 |
| Tarragona | 88,728 | 21,973 | 370,298 | 134,824 | 4.56 | 9,213 | 1,845 | 16.05 | 25.07 | 30.13 | 221 |
| Almería | 79,838 | 7,974 | 329,563 | 54,718 | 4.38 | 6,277 | 1,513 | 18.12 | 28.56 | 32.22 | 204 |
| Sevilla | 75,648 | 50,516 | 203,816 | 140,996 | 2.73 | 4,412 | 1,370 | 23.31 | 38.98 | 43.01 | 330 |
| Cádiz | 76,994 | 9,598 | 285,798 | 35,638 | 3.71 | 4,173 | 1,079 | 22.76 | 31.92 | 38.38 | 263 |
| Granada | 84,507 | 21,552 | 218,926 | 66,073 | 2.69 | 4,509 | 1,195 | 18.78 | 23.95 | 32.63 | 304 |
| Huesca | 61,141 | 2,399 | 220,014 | 9,943 | 3.62 | 3,239 | 723 | 21.02 | 29.07 | 38.36 | 215 |
| Huelva | 53,172 | 3,309 | 215,080 | 13,528 | 4.05 | 2,762 | 635 | 29.94 | 36.07 | 45.09 | 69 |

¹ Provinces belonging to uniprovincial Autonomous Communities have not been included because they are reflected.

² Annual average.

³ Occupancy rate is weighted by number of bedplaces or by number of apartments

4. Travellers, overnight stays, capacity, occupancy, total number of staff from tourist areas with greater number of overnight stays

| Tourist Areas | Travellers | | Overnight stays | | Average stay | Capacity ² | | Level of occupancy ³ | | | Employed personnel ² |
|-----------------------|--------------------|------------------|--------------------|------------------|--------------|-----------------------|----------------------------|---------------------------------|----------------------|---------------------------------|---------------------------------|
| | Residents in Spain | Residents abroad | Residents in Spain | Residents abroad | | Estimated bed-places | Estimated holiday dwelling | Per bed-places | Per Holiday dwelling | Per Holiday dwelling at weekend | |
| Isla de Tenerife | 130,009 | 308,983 | 469,040 | 2,529,520 | 6.83 | 27,341 | 8,657 | 32.69 | 44.78 | 46.46 | 1,974 |
| Isla de Gran Canaria | 99,159 | 223,143 | 446,669 | 2,322,673 | 8.59 | 24,985 | 7,825 | 33.13 | 48.58 | 49.80 | 1,658 |
| Costa Blanca | 162,967 | 112,819 | 973,339 | 1,121,149 | 7.59 | 58,489 | 12,025 | 10.64 | 18.46 | 19.65 | 1,093 |
| Costa del Sol | 189,227 | 158,302 | 744,086 | 1,050,884 | 5.16 | 29,159 | 6,796 | 18.33 | 30.63 | 32.68 | 1,519 |
| Isla de Lanzarote | 41,100 | 179,105 | 203,026 | 1,459,662 | 7.55 | 18,140 | 5,265 | 30.09 | 46.48 | 46.36 | 1,216 |
| Costa Brava | 103,908 | 56,790 | 568,609 | 389,048 | 5.96 | 17,339 | 3,595 | 16.26 | 22.61 | 25.05 | 297 |
| Costa de Castellon | 116,966 | 18,710 | 686,361 | 157,524 | 6.22 | 16,862 | 3,128 | 14.72 | 23.67 | 25.97 | 203 |
| Isla de Fuerteventura | 35,463 | 70,451 | 156,855 | 633,116 | 7.46 | 8,431 | 2,646 | 30.54 | 45.05 | 45.64 | 536 |
| Costa Barcelona16 | 35,981 | 11,811 | 439,617 | 171,348 | 12.78 | 3,794 | 1,215 | 48.01 | 66.62 | 70.49 | 156 |
| Isla de Mallorca | 26,341 | 43,779 | 148,947 | 327,519 | 6.80 | 6,125 | 1,808 | 22.97 | 32.70 | 32.80 | 411 |

² Annual average.

³ Occupancy rate is weighted by number of bedplaces or by number of apartments

5. Travellers, overnight stays, capacity, occupancy, total number of staff from tourist sites with greater number at overnights stays

| Tourist sites | Travellers | | Overnight stays | | Average stay | Capacity ² | | Level of occupancy ³ | | | Employed personnel ² |
|---------------------------|--------------------|------------------|--------------------|------------------|--------------|-----------------------|----------------------------|---------------------------------|----------------------|---------------------------------|---------------------------------|
| | Residents in Spain | Residents abroad | Residents in Spain | Residents abroad | | Estimated bed-places | Estimated holiday dwelling | Per bed-places | Per Holiday dwelling | Per Holiday dwelling at weekend | |
| San Bartolomé de Tirajana | 67,913 | 133,502 | 317,129 | 1,461,767 | 8.83 | 16,024 | 5,091 | 33.11 | 48.19 | 49.73 | 1,116 |
| Arona | 38,028 | 132,168 | 135,490 | 1,115,781 | 7.35 | 12,309 | 3,867 | 30.32 | 41.22 | 42.80 | 914 |
| Tías | 23,564 | 99,140 | 111,166 | 806,631 | 7.48 | 10,477 | 3,249 | 31.97 | 46.38 | 46.39 | 735 |
| Adeje | 34,155 | 103,656 | 120,045 | 795,549 | 6.64 | 8,180 | 2,572 | 33.31 | 44.74 | 45.73 | 509 |
| Mogán | 18,964 | 81,462 | 94,740 | 805,310 | 8.96 | 7,566 | 2,119 | 35.69 | 56.56 | 57.15 | 472 |
| Madrid | 85,754 | 70,903 | 404,734 | 386,403 | 5.05 | 7,124 | 2,745 | 33.12 | 45.17 | 45.69 | 275 |
| Benidorm | 38,011 | 54,467 | 180,118 | 444,399 | 6.75 | 16,645 | 3,762 | 11.22 | 22.71 | 24.36 | 362 |
| Puerto de la Cruz | 42,205 | 27,989 | 153,365 | 272,547 | 6.07 | 3,174 | 1,281 | 40.00 | 50.24 | 53.83 | 271 |
| Teguiuse | 10,722 | 43,486 | 62,029 | 352,856 | 7.65 | 4,349 | 1,256 | 31.36 | 50.53 | 50.05 | 272 |
| València | 55,124 | 49,910 | 154,043 | 189,604 | 3.27 | 4,357 | 947 | 23.54 | 45.08 | 51.26 | 224 |

² Annual average.

³ Occupancy rate is weighted by number of bedplaces or by number of apartments

6. Travellers and overnight stays by countries of residence

| Countries | Travellers | | Overnight stays | |
|--|------------|--------|-----------------|--------|
| | Total | % | Total | % |
| TOTAL | 4,165,348 | 100.00 | 23,459,959 | 100.00 |
| Residents in Spain | 2,547,905 | 61.17 | 11,116,565 | 47.39 |
| Residents abroad | 1,617,443 | 38.83 | 12,343,394 | 52.61 |
| Total residents abroad | 1,617,443 | 100.00 | 12,343,394 | 100.00 |
| Total residents in E.U (excluding Spain) | 871,766 | 53.90 | 6,953,937 | 56.34 |
| - Germany | 165,774 | 10.25 | 1,765,317 | 14.30 |
| - Austria | 8,391 | 0.52 | 75,374 | 0.61 |
| - Belgium | 40,268 | 2.49 | 319,739 | 2.59 |
| - Denmark | 34,836 | 2.15 | 312,779 | 2.53 |
| - Finland | 38,164 | 2.36 | 341,879 | 2.77 |
| - France | 190,760 | 11.79 | 1,219,263 | 9.88 |
| - Greece | 1,626 | 0.10 | 10,133 | 0.08 |
| - Ireland | 48,897 | 3.02 | 349,933 | 2.83 |
| - Italy | 72,131 | 4.46 | 459,839 | 3.73 |
| - Luxembourg | 2,544 | 0.16 | 19,471 | 0.16 |
| - Netherlands | 100,610 | 6.22 | 815,161 | 6.60 |
| - Poland | 28,983 | 1.79 | 182,534 | 1.48 |
| - Portugal | 26,060 | 1.61 | 135,958 | 1.10 |
| - Czech Republic | 8,420 | 0.52 | 57,939 | 0.47 |
| - Sweden | 68,292 | 4.22 | 671,492 | 5.44 |
| - Other EU countries | 36,010 | 2.23 | 217,127 | 1.76 |
| Norway | 48,894 | 3.02 | 528,056 | 4.28 |
| United Kingdom | 453,100 | 28.01 | 3,444,310 | 27.90 |
| Russia | 15,000 | 0.93 | 100,395 | 0.81 |
| Switzerland | 18,985 | 1.17 | 157,867 | 1.28 |
| Other european countries | 30,860 | 1.91 | 217,711 | 1.76 |
| United States of America | 24,923 | 1.54 | 111,725 | 0.91 |
| Rest of America | 62,656 | 3.87 | 451,911 | 3.66 |
| African countries | 22,684 | 1.40 | 110,002 | 0.89 |
| Other countries | 68,574 | 4.24 | 267,480 | 2.17 |

7. 2020 Evolution: Travellers, overnight stays and average stay

| | Travellers | | | Overnight stays | | | Average stay |
|------------|------------|--------------------|------------------|-----------------|--------------------|------------------|--------------|
| | Total | Residents in Spain | Residents abroad | Total | Residents in Spain | Residents abroad | |
| TOTAL | 4,165,348 | 2,547,905 | 1,617,443 | 23,459,959 | 11,116,565 | 12,343,394 | 5.63 |
| Enero | 581,053 | 181,864 | 399,189 | 3,878,056 | 641,825 | 3,236,232 | 6.67 |
| Febrero | 683,517 | 243,157 | 440,360 | 3,950,726 | 722,858 | 3,227,868 | 5.78 |
| Marzo | 178,269 | 54,582 | 123,687 | 1,535,178 | 259,277 | 1,275,901 | 8.61 |
| Abril | 0 | 0 | 0 | 0 | 0 | 0 | 0.00 |
| Mayo | 14,744 | 12,198 | 2,546 | 137,061 | 79,342 | 57,719 | 9.30 |
| Junio | 109,925 | 99,117 | 10,808 | 440,693 | 351,483 | 89,210 | 4.01 |
| Julio | 663,544 | 485,763 | 177,781 | 3,299,990 | 2,175,860 | 1,124,130 | 4.97 |
| Agosto | 966,105 | 750,958 | 215,147 | 5,329,030 | 3,879,902 | 1,449,128 | 5.52 |
| Septiembre | 440,100 | 361,761 | 78,339 | 1,999,374 | 1,478,829 | 520,545 | 4.54 |
| Octubre | 261,120 | 197,154 | 63,966 | 1,169,766 | 731,395 | 438,370 | 4.48 |
| Noviembre | 113,596 | 65,467 | 48,129 | 786,406 | 360,875 | 425,532 | 6.92 |
| Diciembre | 153,377 | 95,885 | 57,492 | 933,679 | 434,920 | 498,759 | 6.09 |

8. Capacity, occupancy rate and employed personnel

| | Capacity | | Level of occupancy | | | | Employed personnel |
|--------------------|---------------------|----------------------------|--------------------|--------------------------|----------------------|---------------------------------|--------------------|
| | Estimated bedplaces | Estimated Holiday dwelling | Per bedplaces | Per bedplaces at weekend | Per Holiday dwelling | Per Holiday dwelling at weekend | |
| TOTAL ¹ | 328,211 | 83,038 | 21.23 | 23.24 | 34.17 | 36.60 | 15,781 |
| Enero | 409,948 | 107,552 | 30.40 | 32.55 | 52.64 | 55.06 | 23,345 |
| Febrero | 414,581 | 108,523 | 32.71 | 35.35 | 55.31 | 58.28 | 23,962 |
| Marzo | 228,491 | 61,003 | 21.73 | 21.79 | 37.84 | 37.22 | 13,384 |
| Abril | 0 | 0 | 0.00 | 0.00 | 0.00 | 0.00 | 0 |
| Mayo | 70,806 | 17,439 | 6.24 | 6.14 | 13.25 | 12.57 | 2,286 |
| Junio | 201,430 | 46,836 | 7.28 | 9.08 | 14.27 | 16.47 | 7,009 |
| Julio | 451,652 | 110,258 | 23.45 | 25.73 | 33.33 | 36.08 | 20,139 |
| Agosto | 492,290 | 123,738 | 34.73 | 36.43 | 45.01 | 47.20 | 22,944 |
| Septiembre | 439,414 | 108,890 | 15.11 | 19.11 | 24.30 | 29.49 | 19,490 |
| Octubre | 339,048 | 85,015 | 11.11 | 13.91 | 19.48 | 23.10 | 15,068 |
| Noviembre | 281,311 | 72,215 | 9.35 | 10.06 | 18.62 | 19.63 | 12,984 |
| Diciembre | 281,355 | 71,954 | 10.69 | 11.26 | 20.12 | 20.94 | 12,982 |

¹ Annual Average. Average Occupancy rates weighted by apartments or bedplaces.

Tourist Accommodation Occupancy Survey Campsite Occupancy Survey (COS)

Year 2020

Provisional data

1st February 2021

1. Travellers, overnight stays and average stay by category of establishment

| Category | Travellers | | | Overnight stays | | | Average stay |
|------------------------|------------|-----------|-----------|-----------------|------------|-----------|--------------|
| | Total | Residents | Residents | Total | Residents | Residents | |
| | | in Spain | abroad | | in Spain | abroad | |
| TOTAL | 4,526,852 | 3,918,822 | 608,029 | 21,701,122 | 15,245,035 | 6,456,087 | 4.79 |
| Luxury and first-class | 1,893,048 | 1,633,840 | 259,208 | 9,353,393 | 6,606,795 | 2,746,598 | 4.94 |
| Second-class | 2,176,160 | 1,871,103 | 305,058 | 10,478,802 | 7,030,393 | 3,448,408 | 4.82 |
| Third-class | 457,644 | 413,880 | 43,764 | 1,868,928 | 1,607,847 | 261,080 | 4.08 |
| Cumulative annual rate | -45.49 | -29.01 | -78.16 | -46.71 | -28.40 | -66.77 | -2.24 |

2. Open establishments, capacity, occupancy and number of staff by category of establishments

| Category | Estimated open establishments ¹ | Capacity ¹ | | Occupied pitches | Occupancy rate per pitch ² | Weekend occupancy rate ² | Employed personnel ¹ |
|------------------------|--|-----------------------|-------------------|------------------|---------------------------------------|-------------------------------------|---------------------------------|
| | | Estimated bed-places | Estimated pitches | | | | |
| TOTAL | 523 | 337,925 | 104,287 | 13,875,743 | 36.26 | 37.86 | 4,635 |
| Luxury and first-class | 135 | 143,173 | 43,016 | 5,401,418 | 34.22 | 36.45 | 2,160 |
| Second-class | 297 | 164,068 | 51,719 | 7,148,898 | 37.68 | 38.84 | 2,069 |
| Third-class | 92 | 30,684 | 9,552 | 1,325,428 | 37.76 | 38.76 | 407 |
| Cumulative annual rate | -32.47 | -32.68 | -32.48 | -39.83 | -11.07 | -12.46 | -35.92 |

¹ Annual average

² Occupancy rate is weighted by number of pitches

3. Travellers, overnight stays and average stay by autonomous cities and communities

| Autonomous cities and communities | Travellers | | | Overnight stays | | | Average stay |
|-----------------------------------|------------|-----------|-----------|-----------------|------------|-----------|--------------|
| | Total | Residents | Residents | Total | Residents | Residents | |
| | | in Spain | abroad | | in Spain | abroad | |
| TOTAL | 4,526,852 | 3,918,822 | 608,029 | 21,701,122 | 15,245,035 | 6,456,087 | 4.79 |
| Andalucía | 616,108 | 508,848 | 107,260 | 2,665,659 | 1,737,592 | 928,067 | 4.33 |
| Aragón | 232,854 | 201,901 | 30,953 | 720,294 | 638,512 | 81,783 | 3.09 |
| Asturias, Principado de | 177,461 | 165,002 | 12,459 | 749,691 | 716,622 | 33,069 | 4.22 |
| Balears, Illes | 19,942 | 14,117 | 5,825 | 96,712 | 63,137 | 33,575 | 4.85 |
| Canarias | 18,349 | 17,078 | 1,271 | 89,569 | 43,602 | 45,968 | 4.88 |
| Cantabria | 186,777 | 170,677 | 16,100 | 1,029,792 | 976,939 | 52,854 | 5.51 |
| Castilla y León | 170,860 | 154,367 | 16,493 | 456,838 | 432,296 | 24,542 | 2.67 |
| Castilla-La Mancha | 55,218 | 52,530 | 2,688 | 149,985 | 145,640 | 4,345 | 2.72 |
| Cataluña | 1,712,469 | 1,499,548 | 212,921 | 7,354,640 | 5,698,190 | 1,656,450 | 4.29 |
| Comunitat Valenciana | 569,099 | 451,901 | 117,198 | 5,173,615 | 2,162,230 | 3,011,385 | 9.09 |
| Extremadura | 47,536 | 41,891 | 5,645 | 143,229 | 131,136 | 12,093 | 3.01 |
| Galicia | 173,204 | 159,622 | 13,582 | 666,153 | 629,965 | 36,188 | 3.85 |
| Madrid, Comunidad de | 170,677 | 163,159 | 7,518 | 629,896 | 606,026 | 23,870 | 3.69 |
| Murcia, Región de | 94,877 | 77,380 | 17,497 | 739,635 | 318,388 | 421,247 | 7.80 |
| Navarra, Comunidad Foral de | 109,566 | 102,176 | 7,389 | 410,946 | 396,042 | 14,903 | 3.75 |
| País Vasco | 125,256 | 94,114 | 31,141 | 432,842 | 360,526 | 72,316 | 3.46 |
| Rioja, La | 46,600 | 44,510 | 2,090 | 191,625 | 188,194 | 3,431 | 4.11 |
| Ceuta | - | - | - | - | - | - | - |
| Melilla | - | - | - | - | - | - | - |

4. Open establishments, capacity, occupancy and number of staff by autonomous cities and communities

| Autonomous cities and communities | Estimated open establishments | Capacity ¹ | | Occupied pitches | Occupancy rate per pitch ² | Weekend occupancy rate ² | Employed personnel ¹ |
|-----------------------------------|-------------------------------|-----------------------|-------------------|-------------------|---------------------------------------|-------------------------------------|---------------------------------|
| | | Estimated bed-places | Estimated pitches | | | | |
| TOTAL3 | 524 | 338,289 | 104,449 | 13,875,743 | 36.26 | 37.86 | 4,635 |
| Andalucía | 88 | 49,929 | 15,738 | 1,610,127 | 27.93 | 30.51 | 653 |
| Aragón | 40 | 15,386 | 4,724 | 502,605 | 28.94 | 31.40 | 216 |
| Asturias, Principado de | 17 | 9,208 | 2,828 | 363,061 | 34.84 | 36.46 | 109 |
| Balears, Illes | 3 | 1,089 | 486 | 34,247 | 28.57 | 27.05 | 30 |
| Canarias | 4 | 3,044 | 1,295 | 84,007 | 17.69 | 21.26 | 20 |
| Cantabria | 15 | 10,653 | 3,450 | 556,989 | 43.83 | 46.02 | 117 |
| Castilla y León | 27 | 11,625 | 3,666 | 305,019 | 22.58 | 24.28 | 130 |
| Castilla-La Mancha | 13 | 5,072 | 1,410 | 120,855 | 23.37 | 30.18 | 76 |
| Cataluña | 125 | 112,800 | 33,362 | 4,346,251 | 35.43 | 37.72 | 1,647 |
| Comunitat Valenciana | 89 | 57,634 | 17,942 | 3,293,086 | 50.16 | 50.51 | 830 |
| Extremadura | 10 | 3,955 | 1,329 | 102,622 | 21.03 | 25.73 | 67 |
| Galicia | 35 | 11,982 | 3,833 | 319,497 | 22.57 | 23.49 | 177 |
| Madrid, Comunidad de | 15 | 13,841 | 4,756 | 840,153 | 48.25 | 45.54 | 183 |
| Murcia, Región de | 13 | 11,817 | 3,877 | 450,388 | 31.79 | 33.11 | 167 |
| Navarra, Comunidad Foral de | 13 | 8,111 | 2,148 | 319,485 | 40.48 | 41.41 | 95 |
| País Vasco | 12 | 6,493 | 1,947 | 257,836 | 36.02 | 37.73 | 86 |
| Rioja, La | 5 | 5,649 | 1,657 | 369,515 | 60.97 | 61.33 | 45 |
| Ceuta | - | - | - | - | - | - | - |
| Melilla | - | - | - | - | - | - | - |

¹ Annual average

² Occupancy rate is weighted by number of pitches

³ Calculated as sum of the average per CCAA

5. Travellers and overnight stays, average stay, capacity, occupancy and number of staff by provinces with the greater number of overnight stays³

| Provinces | Travellers | | Overnight stays | | Average stay | Estimated open establishments ¹ | Estimated pitches ¹ | Occupancy rate per pitch ² | Employed personnel ¹ |
|--------------------|--------------------|------------------|--------------------|------------------|--------------|--|--------------------------------|---------------------------------------|---------------------------------|
| | Residents in Spain | Residents abroad | Residents in Spain | Residents abroad | | | | | |
| | Alicante/Alacant | 202,859 | 59,447 | 960,104 | | | | | |
| Girona | 538,423 | 124,485 | 2,044,333 | 1,039,509 | 4.65 | 49 | 13,344 | 31.58 | 699 |
| Tarragona | 480,636 | 52,811 | 2,023,818 | 413,304 | 4.57 | 24 | 9,069 | 34.29 | 534 |
| Barcelona | 329,950 | 28,593 | 1,111,880 | 184,956 | 3.62 | 30 | 7,719 | 39.66 | 310 |
| Castellón/Castelló | 88,276 | 33,052 | 508,457 | 476,685 | 8.12 | 26 | 4,807 | 35.58 | 199 |
| Valencia/València | 160,766 | 24,699 | 693,669 | 223,300 | 4.94 | 25 | 4,624 | 43.29 | 179 |
| Málaga | 73,163 | 27,834 | 273,826 | 458,552 | 7.25 | 22 | 3,689 | 33.72 | 153 |
| Cádiz | 164,479 | 25,008 | 551,330 | 124,116 | 3.56 | 14 | 3,294 | 27.77 | 161 |
| Huesca | 161,216 | 23,411 | 513,206 | 66,402 | 3.14 | 27 | 3,495 | 33.18 | 166 |
| Lleida | 150,538 | 7,031 | 518,158 | 18,681 | 3.41 | 22 | 3,230 | 44.46 | 104 |
| Huelva | 99,808 | 11,170 | 384,140 | 44,550 | 3.86 | 7 | 2,711 | 27.25 | 82 |
| Pontevedra | 100,904 | 6,382 | 388,871 | 19,145 | 3.80 | 14 | 1,911 | 27.32 | 94 |
| Almería | 63,863 | 18,684 | 207,538 | 182,572 | 4.73 | 17 | 2,175 | 31.80 | 98 |
| Granada | 45,810 | 15,451 | 138,747 | 98,857 | 3.88 | 14 | 1,958 | 24.10 | 68 |
| Gipuzkoa | 59,841 | 21,080 | 185,236 | 52,110 | 2.93 | 6 | 1,220 | 32.94 | 51 |

¹ Annual average

² Occupancy rate is weighted by number of pitches

³ Provinces belonging to uniprovincial Autonomous Communities have not been included because they are reflected in previous tables

6. Travellers, overnight stays, average stay, open establishments, capacity, occupancy and number of staff from tourist areas with the greatest number of overnight stays

| Tourist areas | Travellers | | Overnight stays | | Average stay | Estimated open establishments ¹ | Estimated pitches ¹ | Occupancy rate per pitch ² | Employed personnel ¹ |
|----------------------------|--------------------|------------------|--------------------|------------------|--------------|--|--------------------------------|---------------------------------------|---------------------------------|
| | Residents in Spain | Residents abroad | Residents in Spain | Residents abroad | | | | | |
| | Costa Brava | 422,426 | 122,627 | 1,706,970 | | | | | |
| Costa Blanca | 161,771 | 49,138 | 716,779 | 1,931,881 | 12.56 | 30 | 6,614 | 67.54 | 400 |
| Costa Daurada | 404,928 | 44,196 | 1,703,198 | 368,704 | 4.61 | 18 | 7,829 | 33.84 | 481 |
| Pirineus | 317,305 | 8,238 | 987,388 | 22,255 | 3.10 | 42 | 5,836 | 46.82 | 234 |
| Costa Barcelona 2016 | 224,686 | 27,915 | 813,195 | 183,844 | 3.95 | 16 | 5,826 | 37.04 | 212 |
| Costa de Castellón | 70,217 | 30,977 | 420,614 | 463,708 | 8.74 | 22 | 4,368 | 36.03 | 179 |
| pn Aiguamolls de l'Empordà | 65,722 | 42,008 | 333,826 | 364,301 | 6.48 | 7 | 2,844 | 25.86 | 172 |
| Costa Valencia | 86,243 | 16,056 | 491,575 | 193,652 | 6.70 | 12 | 3,099 | 45.75 | 114 |
| Costa Verde | 137,558 | 9,915 | 644,866 | 27,567 | 4.56 | 14 | 2,468 | 36.09 | 98 |
| Costa del Sol | 53,029 | 21,746 | 228,457 | 429,017 | 8.79 | 12 | 2,853 | 38.52 | 116 |
| Costa de la Luz (Cádiz) | 155,617 | 21,413 | 533,145 | 115,755 | 3.67 | 11 | 2,876 | 28.20 | 148 |
| Costa Cálida | 37,670 | 12,603 | 200,226 | 374,819 | 11.44 | 7 | 3,087 | 30.75 | 130 |
| Pirineo Aragonés | 158,920 | 22,423 | 507,784 | 64,752 | 3.16 | 25 | 3,336 | 32.17 | 161 |
| Rías Baixas | 122,108 | 7,697 | 451,120 | 22,168 | 3.65 | 19 | 2,700 | 21.99 | 125 |
| Costa de la Luz (Huelva) | 94,869 | 10,749 | 376,150 | 43,375 | 3.97 | 5 | 2,591 | 27.41 | 78 |

¹ Annual average

² Occupancy rate is weighted by number of pitches

7. Travellers, overnight stays, average stay, open establishments, capacity, occupancy and number of staff from tourist sites with the greatest number at overnights stays

| Tourist sites | Travellers | | Overnight stays | | Average stay | Estimated open establishments ¹ | Estimated pitches ¹ | Occupancy rate per pitch ² | Employed personnel ¹ |
|----------------------|--------------------|------------------|--------------------|------------------|--------------|--|--------------------------------|---------------------------------------|---------------------------------|
| | Residents in Spain | Residents abroad | Residents in Spain | Residents abroad | | | | | |
| | Benidorm | 23,376 | 15,116 | 134,085 | | | | | |
| Blanes | 49,940 | 10,788 | 245,037 | 101,204 | 5.70 | 5 | 1,334 | 39.03 | 70 |
| Oliva | 26,864 | 7,430 | 148,690 | 130,760 | 8.15 | 5 | 1,121 | 31.81 | 61 |
| Cabanes | 15,063 | 4,708 | 122,127 | 113,269 | 11.91 | 3 | 948 | 35.70 | 40 |
| Tarifa | 60,445 | 11,532 | 163,618 | 44,540 | 2.89 | 3 | 798 | 31.98 | 44 |
| Vélez-Málaga | 16,433 | 5,832 | 69,092 | 138,629 | 9.33 | 4 | 805 | 37.94 | 48 |
| Níjar | 54,657 | 9,491 | 131,560 | 45,445 | 2.76 | 4 | 494 | 40.00 | 29 |
| Peñíscola | 11,618 | 9,171 | 62,520 | 105,561 | 8.09 | 5 | 862 | 25.78 | 27 |
| Benicasim/Benicàssim | 9,571 | 5,337 | 61,116 | 90,632 | 10.18 | 3 | 709 | 38.57 | 40 |
| Calpe/Calp | 6,688 | 7,673 | 31,316 | 115,871 | 10.25 | 4 | 377 | 61.56 | 19 |
| Campello (el) | 7,675 | 4,009 | 47,040 | 66,250 | 9.70 | 4 | 298 | 61.26 | 22 |
| Alcalà de Xivert | 17,502 | 5,174 | 64,420 | 46,992 | 4.91 | 3 | 593 | 25.73 | 31 |

¹ Annual average

² Occupancy rate is weighted by number of pitches

8. Guests and overnight stays by countries of residence

| Countries | Guests | | Overnight stays | |
|---|-----------|--------|-----------------|--------|
| | Total | % | Total | % |
| TOTAL | 4,526,852 | 100.00 | 21,701,122 | 100.00 |
| Residents in Spain | 3,918,822 | 86.57 | 15,245,035 | 70.25 |
| Residents abroad | 608,029 | 13.43 | 6,456,087 | 29.75 |
| TOTAL residents abroad | 608,029 | 100.00 | 6,456,087 | 100.00 |
| TOTAL residents in EU (excluding Spain) | 472,486 | 77.71 | 4,176,216 | 64.69 |
| - Germany | 99,997 | 16.45 | 1,089,248 | 16.87 |
| - Austria | 3,950 | 0.65 | 30,195 | 0.47 |
| - Belgium | 29,026 | 4.77 | 352,732 | 5.46 |
| - Denmark | 3,402 | 0.56 | 38,049 | 0.59 |
| - Finland | 2,204 | 0.36 | 36,822 | 0.57 |
| - France | 173,743 | 28.57 | 1,113,362 | 17.25 |
| - Greece | 360 | 0.06 | 1,401 | 0.02 |
| - Ireland | 5,687 | 0.94 | 66,595 | 1.03 |
| - Italy | 13,835 | 2.28 | 61,382 | 0.95 |
| - Luxembourg | 1,369 | 0.23 | 14,375 | 0.22 |
| - Netherlands | 96,838 | 15.93 | 1,139,284 | 17.65 |
| - Poland | 4,867 | 0.80 | 20,890 | 0.32 |
| - Portugal | 14,986 | 2.46 | 49,250 | 0.76 |
| - Czech Republic | 1,683 | 0.28 | 6,271 | 0.10 |
| - Sweden | 6,575 | 1.08 | 109,380 | 1.69 |
| - Other EU countries | 13,964 | 2.30 | 46,981 | 0.73 |
| Norway | 1,517 | 0.25 | 48,556 | 0.75 |
| United Kingdom | 88,253 | 14.51 | 2,005,807 | 31.07 |
| Russia | 823 | 0.14 | 2,929 | 0.05 |
| Switzerland | 13,594 | 2.24 | 109,024 | 1.69 |
| Other European countries | 7,984 | 1.31 | 27,043 | 0.42 |
| United States of America | 1,926 | 0.32 | 9,007 | 0.14 |
| Rest of America | 7,302 | 1.20 | 22,809 | 0.35 |
| African countries | 1,151 | 0.19 | 5,251 | 0.08 |
| Other countries | 12,993 | 2.14 | 49,445 | 0.77 |

Press Release • Instituto Nacional de Estadística

9. 2020 Evolution: Travellers, overnight stays and average stay

| Months | Travellers | | | Overnight stays | | | Average stay |
|-----------|------------|--------------------|------------------|-----------------|--------------------|------------------|--------------|
| | Total | Residents in Spain | Residents abroad | Total | Residents in Spain | Residents abroad | |
| TOTAL | 4,526,852 | 3,918,822 | 608,029 | 21,701,122 | 15,245,035 | 6,456,087 | 4.79 |
| January | 146,620 | 77,825 | 68,795 | 1,188,970 | 238,185 | 950,785 | 8.11 |
| February | 220,087 | 141,485 | 78,601 | 1,367,593 | 342,284 | 1,025,310 | 6.21 |
| March | 79,295 | 42,877 | 36,418 | 728,416 | 145,463 | 582,953 | 9.19 |
| April | 0 | 0 | 0 | 0 | 0 | 0 | 0.00 |
| May | 18,928 | 18,165 | 763 | 113,305 | 61,566 | 51,739 | 5.99 |
| June | 352,643 | 336,184 | 16,459 | 1,237,154 | 1,055,762 | 181,392 | 3.51 |
| July | 1,176,072 | 1,011,518 | 164,554 | 5,071,608 | 3,955,195 | 1,116,413 | 4.31 |
| August | 1,505,676 | 1,372,757 | 132,919 | 7,217,442 | 6,205,677 | 1,011,765 | 4.79 |
| September | 611,707 | 558,376 | 53,331 | 2,472,421 | 2,030,327 | 442,094 | 4.04 |
| October | 284,533 | 249,056 | 35,477 | 1,165,395 | 769,150 | 396,246 | 4.10 |
| November | 52,507 | 43,046 | 9,461 | 525,856 | 184,702 | 341,154 | 10.02 |
| December | 78,784 | 67,533 | 11,251 | 612,961 | 256,724 | 356,237 | 7.78 |

10. Open establishments, capacity, occupancy rate and employed personnel

| Months | Estimated open establishments ¹ | Capacity ¹ | | Occupied pitches | Occupancy rate per pitch ² | Weekend occupancy rate ² | Employed personnel ¹ |
|-----------|--|-----------------------|-------------------|------------------|---------------------------------------|-------------------------------------|---------------------------------|
| | | Estimated bed-places | Estimated pitches | | | | |
| TOTAL | 523 | 337,925 | 104,287 | 13,875,743 | 36.26 | 37.86 | 4,635 |
| January | 429 | 257,732 | 81,393 | 1,012,045 | 40.11 | 40.17 | 3,178 |
| February | 463 | 281,796 | 89,234 | 1,110,203 | 42.90 | 44.18 | 3,302 |
| March | 275 | 161,065 | 51,225 | 657,140 | 41.38 | 33.85 | 1,749 |
| April | 0 | 0 | 0 | 0 | 0.00 | 0.00 | 0 |
| May | 87 | 58,552 | 19,082 | 160,282 | 27.10 | 30.42 | 433 |
| June | 522 | 353,846 | 109,145 | 974,135 | 29.75 | 32.09 | 4,037 |
| July | 1,091 | 721,560 | 217,835 | 2,560,959 | 37.92 | 42.47 | 11,655 |
| August | 1,111 | 731,121 | 222,729 | 3,085,797 | 44.69 | 47.59 | 12,676 |
| September | 928 | 631,185 | 191,904 | 1,736,183 | 30.16 | 34.13 | 9,374 |
| October | 588 | 385,269 | 118,489 | 1,119,357 | 30.47 | 31.61 | 4,372 |
| November | 399 | 244,092 | 77,090 | 721,874 | 31.21 | 30.06 | 2,489 |
| December | 379 | 228,887 | 73,315 | 737,768 | 32.46 | 30.99 | 2,360 |

¹ Annual average

² Occupancy rate is weighted by number of pitches

**Tourist accommodation occupancy survey:
(Rural tourist accommodation)**

Year 2020

Provisional data

1st February 2021

1. Number of travellers, overnight stays and average stay by Autonomous Cities and Communities

| Autonomous Communities | Number of travellers | | | Number of overnight stays | | | Average stay |
|-----------------------------|----------------------|--------------------|------------------|---------------------------|--------------------|------------------|--------------|
| | Total | Residents In Spain | Residents abroad | Total | Residents In Spain | Residents abroad | |
| TOTAL | 2,070,637 | 1,888,639 | 181,998 | 6,282,936 | 5,559,402 | 723,534 | 3.03 |
| Andalucía | 193,672 | 171,755 | 21,917 | 675,951 | 545,062 | 130,889 | 3.49 |
| Aragón | 100,036 | 94,419 | 5,617 | 345,806 | 321,354 | 24,451 | 3.46 |
| Asturias, Principado de | 192,916 | 186,726 | 6,190 | 723,471 | 702,584 | 20,888 | 3.75 |
| Balears, Illes | 89,916 | 43,464 | 46,452 | 303,335 | 115,269 | 188,066 | 3.37 |
| Canarias | 45,990 | 25,946 | 20,044 | 212,161 | 89,775 | 122,386 | 4.61 |
| Cantabria | 144,249 | 132,279 | 11,971 | 393,274 | 362,853 | 30,421 | 2.73 |
| Castilla y León | 340,355 | 326,691 | 13,665 | 944,544 | 917,498 | 27,046 | 2.78 |
| Castilla-La Mancha | 132,728 | 128,854 | 3,873 | 402,078 | 387,182 | 14,896 | 3.03 |
| Cataluña | 272,342 | 256,918 | 15,424 | 800,640 | 734,424 | 66,216 | 2.94 |
| Comunitat Valenciana | 107,169 | 101,311 | 5,857 | 278,285 | 254,528 | 23,757 | 2.60 |
| Extremadura | 115,346 | 105,133 | 10,213 | 285,460 | 260,342 | 25,117 | 2.47 |
| Galicia | 77,582 | 71,917 | 5,665 | 182,100 | 170,655 | 11,445 | 2.35 |
| Madrid, Comunidad de | 84,981 | 79,485 | 5,496 | 170,433 | 160,900 | 9,533 | 2.01 |
| Murcia, Región de | 29,534 | 28,228 | 1,306 | 81,479 | 77,911 | 3,568 | 2.76 |
| Navarra, Comunidad Foral de | 63,222 | 61,835 | 1,387 | 256,546 | 250,322 | 6,224 | 4.06 |
| País Vasco | 65,604 | 59,143 | 6,461 | 188,221 | 170,385 | 17,837 | 2.87 |
| Rioja, La | 14,997 | 14,536 | 461 | 39,151 | 38,357 | 794 | 2.61 |
| Ceuta | - | - | - | - | - | - | - |
| Melilla | - | - | - | - | - | - | - |
| Interannual rate | -53.17 | -46.55 | -79.50 | -46.42 | -34.76 | -77.42 | 14.41 |

2. Open rural establishments, bed-places, occupancy rates and employed personnel by Autonomous City and Community

| Autonomous Communities | Estimated open rural establishments ¹ | Estimated bed-places ¹ | Occupancy rate ¹ | | | Employed personnel ¹ |
|-----------------------------|--|-----------------------------------|-----------------------------|--------------------------|-------------|---------------------------------|
| | | | Of bed-places | Of bed-places at weekend | Of bedrooms | |
| TOTAL | 11,668 | 110,107 | 15.45 | 23.74 | 20.50 | 17,605 |
| Andalucía | 1,780 | 14,517 | 12.63 | 19.30 | 17.68 | 2,527 |
| Aragón | 793 | 6,294 | 14.84 | 22.80 | 19.54 | 986 |
| Asturias, Principado de | 826 | 8,227 | 23.73 | 27.47 | 28.66 | 1,270 |
| Balears, Illes | 179 | 3,390 | 24.20 | 30.11 | 29.45 | 829 |
| Canarias | 421 | 2,531 | 22.89 | 26.16 | 35.37 | 557 |
| Cantabria | 306 | 4,652 | 22.76 | 31.03 | 27.18 | 577 |
| Castilla y León | 2,372 | 20,620 | 12.41 | 21.21 | 16.87 | 3,346 |
| Castilla-La Mancha | 1,180 | 10,012 | 10.89 | 19.90 | 15.35 | 1,590 |
| Cataluña | 1,341 | 11,999 | 18.06 | 30.38 | 23.53 | 1,915 |
| Comunitat Valenciana | 546 | 6,303 | 12.00 | 19.97 | 20.43 | 891 |
| Extremadura | 465 | 5,545 | 14.01 | 22.81 | 19.01 | 751 |
| Galicia | 278 | 3,575 | 13.70 | 20.61 | 15.85 | 519 |
| Madrid, Comunidad de | 165 | 2,567 | 18.08 | 36.29 | 24.94 | 473 |
| Murcia, Región de | 115 | 1,775 | 12.45 | 22.92 | 16.70 | 201 |
| Navarra, Comunidad Foral de | 560 | 4,358 | 15.90 | 22.99 | 20.71 | 736 |
| País Vasco | 264 | 2,948 | 17.18 | 24.41 | 21.60 | 347 |
| Rioja, La | 77 | 794 | 13.30 | 23.00 | 16.22 | 91 |
| Ceuta | - | - | - | - | - | - |
| Melilla | - | - | - | - | - | - |
| Interannual rate | -32.23 | -33.65 | -19.39 | -27.37 | -13.08 | -30.98 |

¹ Annual average and weighted average per places or rooms

3. Number of travellers, overnight stays and average stay of provinces with the greatest number of overnight stays¹

| Provinces | Number of travellers | | | Number of overnight stays | | | Average stay |
|------------------------|----------------------|--------------------|------------------|---------------------------|--------------------|------------------|--------------|
| | Total | Residents In Spain | Residents abroad | Total | Residents In Spain | Residents abroad | |
| Girona | 118,329 | 108,167 | 10,162 | 345,690 | 305,517 | 40,173 | 2.92 |
| Málaga | 68,024 | 55,495 | 12,529 | 320,994 | 222,761 | 98,232 | 4.72 |
| Cáceres | 90,362 | 81,447 | 8,915 | 221,224 | 200,743 | 20,482 | 2.45 |
| Barcelona | 76,682 | 74,489 | 2,193 | 216,855 | 205,590 | 11,265 | 2.83 |
| Ávila | 58,080 | 57,522 | 557 | 201,418 | 199,615 | 1,803 | 3.47 |
| Huesca | 52,842 | 48,929 | 3,913 | 187,163 | 170,257 | 16,906 | 3.54 |
| Santa Cruz de Tenerife | 32,322 | 17,658 | 14,665 | 164,421 | 66,120 | 98,301 | 5.09 |
| Lleida | 48,163 | 46,874 | 1,289 | 160,091 | 153,788 | 6,303 | 3.32 |
| Albacete | 40,749 | 40,557 | 192 | 129,402 | 128,877 | 525 | 3.18 |
| León | 48,436 | 45,710 | 2,726 | 126,775 | 121,937 | 4,838 | 2.62 |
| Salamanca | 39,586 | 37,201 | 2,386 | 117,626 | 112,137 | 5,489 | 2.97 |
| Burgos | 41,636 | 39,675 | 1,961 | 110,468 | 106,697 | 3,771 | 2.65 |
| Segovia | 49,780 | 48,308 | 1,472 | 110,100 | 108,150 | 1,950 | 2.21 |
| Gipuzkoa | 36,922 | 32,646 | 4,276 | 108,984 | 97,455 | 11,530 | 2.95 |
| Castellón/Castelló | 33,044 | 32,749 | 295 | 95,807 | 94,476 | 1,331 | 2.90 |

¹ Provinces belonging to uniprovincial Autonomous Communities have not been included because they are reflected in previous tables.

4. Open rural establishments, bed-places, occupancy rates and employed personnel in Provinces with the highest number of overnight stays¹

| Provinces | Estimated open rural establishments ² | Estimated bed-places ² | Occupancy rate ² | | | Employed personnel ² |
|------------------------|--|-----------------------------------|-----------------------------|--------------------------|-------------|---------------------------------|
| | | | Of bed-places | Of bed-places at weekend | Of bedrooms | |
| Girona | 427 | 4,398 | 21.25 | 33.56 | 27.59 | 554 |
| Málaga | 1,035 | 6,902 | 12.61 | 16.31 | 18.49 | 1,446 |
| Cáceres | 353 | 4,239 | 14.20 | 23.33 | 19.18 | 573 |
| Barcelona | 377 | 3,200 | 18.36 | 35.24 | 23.22 | 598 |
| Ávila | 533 | 4,266 | 12.79 | 22.99 | 18.60 | 654 |
| Huesca | 412 | 3,163 | 15.94 | 22.61 | 20.26 | 506 |
| Santa Cruz de Tenerife | 360 | 2,018 | 22.27 | 24.42 | 35.28 | 435 |
| Lleida | 349 | 2,599 | 16.65 | 26.81 | 22.32 | 533 |
| Albacete | 530 | 3,426 | 10.25 | 19.64 | 14.90 | 707 |
| León | 284 | 2,148 | 15.90 | 22.22 | 20.57 | 414 |
| Salamanca | 353 | 2,814 | 11.36 | 18.34 | 15.49 | 550 |
| Burgos | 270 | 2,708 | 11.07 | 20.57 | 14.57 | 334 |
| Segovia | 303 | 2,804 | 10.65 | 21.54 | 14.13 | 434 |
| Gipuzkoa | 127 | 1,444 | 20.23 | 25.84 | 25.41 | 162 |
| Castellón/Castelló | 237 | 2,359 | 11.03 | 18.01 | 18.10 | 353 |

¹ Provinces belonging to uniprovincial Autonomous Communities have not been included because they are reflected in previous tables.

² Annual average and weighted average per places or rooms

5. Number of travellers, overnight stays, average stay, capacity and occupancy rates in areas with the highest number of overnight stays

| Areas | Number of travellers | | Number of overnight stays | | | Capacity ¹ | | Occupancy rate ¹ | | |
|--|----------------------|------------------|---------------------------|------------------|--------------|-------------------------------------|----------------------|-----------------------------|---------------|-------------|
| | Residents In Spain | Residents abroad | Residents In Spain | Residents abroad | Average stay | Estimated open rural establishments | Estimated bed-places | Of bed-places at weekend | Of bed-places | Of bedrooms |
| Pirineus | 101,418 | 2,474 | 305,728 | 12,765 | 3.07 | 515 | 4,368 | 19.72 | 34.63 | 24.69 |
| Costa Verde | 73,588 | 2,201 | 308,904 | 9,251 | 4.20 | 322 | 3,596 | 23.86 | 26.95 | 28.98 |
| Costa Brava | 67,747 | 8,666 | 195,491 | 33,156 | 2.99 | 278 | 2,804 | 22.06 | 32.48 | 29.16 |
| Pirineo Navarro | 54,622 | 1,252 | 221,125 | 5,966 | 4.06 | 463 | 3,552 | 17.27 | 24.66 | 22.26 |
| Isla de Mallorca | 26,867 | 36,476 | 70,233 | 152,481 | 3.52 | 148 | 2,833 | 21.30 | 26.24 | 26.80 |
| P.Nacional Picos de Europa | 56,654 | 2,989 | 175,383 | 8,626 | 3.09 | 181 | 1,627 | 30.61 | 36.19 | 34.80 |
| Pirineo Aragonés | 46,732 | 3,725 | 160,685 | 15,663 | 3.50 | 375 | 2,925 | 16.24 | 23.65 | 20.59 |
| Extremadura Norte | 62,036 | 6,055 | 149,080 | 13,002 | 2.38 | 229 | 2,840 | 15.51 | 25.15 | 20.58 |
| P.Natural Sierras de Tejeda, Almijara y Alhama | 14,494 | 3,128 | 67,764 | 31,224 | 5.62 | 335 | 2,072 | 14.25 | 16.69 | 22.96 |
| Costa del Sol | 9,500 | 3,500 | 57,726 | 36,690 | 7.26 | 220 | 1,519 | 20.58 | 21.82 | 28.91 |
| Paisatges Barcelona | 28,575 | 1,146 | 82,263 | 7,210 | 3.01 | 213 | 1,737 | 15.37 | 28.42 | 20.31 |
| P.Nacional Sierra de Guadarrama | 41,078 | 4,014 | 66,678 | 6,479 | 1.62 | 70 | 1,007 | 19.84 | 38.78 | 23.32 |
| Isla de La Palma | 4,575 | 4,398 | 23,454 | 41,959 | 7.29 | 220 | 951 | 20.66 | 20.57 | 35.66 |
| Isla de Tenerife | 8,601 | 7,887 | 23,693 | 37,693 | 3.72 | 77 | 715 | 23.50 | 28.83 | 32.00 |
| Isla de Menorca | 14,213 | 6,275 | 39,517 | 20,774 | 2.94 | 24 | 409 | 39.65 | 50.22 | 42.23 |

¹ Annual average and weighted average per places or rooms

6. Number of travellers, overnight stays, average stay, capacity, occupancy rates and employed personnel per rural house by Autonomous City and Community¹

| Autonomous Communities | Number of travellers | | Number of overnight stays | | | Capacity ² | | Occupancy rate ² | | Employed personnel ² |
|-----------------------------|----------------------|------------------|---------------------------|------------------|--------------|---------------------------------|----------------------|-----------------------------|-------|---------------------------------|
| | Residents In Spain | Residents abroad | Residents In Spain | Residents abroad | Average stay | Estimated open rural establish. | Estimated bed-places | Of bed-places at weekends | | |
| TOTAL | 1,289,476 | 99,113 | 4,036,089 | 460,493 | 3.24 | 10,184 | 84,687 | 14.44 | 22.80 | 14,019 |
| Andalucía | 170,582 | 21,651 | 542,087 | 130,300 | 3.50 | 1,778 | 14,409 | 12.66 | 19.32 | 2,519 |
| Aragón | 79,194 | 4,893 | 266,294 | 21,114 | 3.42 | 666 | 5,182 | 14.99 | 23.18 | 838 |
| Asturias, Principado de | 69,332 | 1,697 | 274,782 | 6,342 | 3.96 | 555 | 3,715 | 22.42 | 24.67 | 720 |
| Balears, Illes | 20,435 | 17,013 | 50,375 | 58,363 | 2.90 | 79 | 1,264 | 23.35 | 31.06 | 214 |
| Canarias | 17,536 | 11,582 | 72,759 | 90,062 | 5.59 | 407 | 2,125 | 20.91 | 23.33 | 477 |
| Cantabria | 38,664 | 1,982 | 133,178 | 7,251 | 3.45 | 170 | 2,066 | 18.40 | 24.95 | 289 |
| Castilla y León | 193,106 | 3,189 | 664,315 | 10,198 | 3.44 | 2,143 | 16,010 | 11.41 | 19.77 | 2,739 |
| Castilla-La Mancha | 124,006 | 3,794 | 375,698 | 14,759 | 3.06 | 1,160 | 9,458 | 11.20 | 20.36 | 1,556 |
| Cataluña | 256,918 | 15,424 | 734,424 | 66,216 | 2.94 | 1,341 | 11,999 | 18.06 | 30.38 | 1,915 |
| Comunitat Valenciana | 86,075 | 5,448 | 222,226 | 21,594 | 2.66 | 516 | 4,663 | 14.21 | 23.48 | 804 |
| Extremadura | 54,736 | 3,814 | 133,258 | 10,544 | 2.46 | 296 | 2,821 | 13.86 | 23.67 | 417 |
| Galicia | 45,874 | 3,653 | 118,770 | 7,891 | 2.56 | 206 | 2,500 | 13.63 | 20.84 | 360 |
| Madrid, Comunidad de | 13,170 | 71 | 46,218 | 154 | 3.50 | 68 | 814 | 15.48 | 27.32 | 86 |
| Murcia, Región de | 21,387 | 850 | 67,616 | 2,675 | 3.16 | 107 | 1,542 | 12.36 | 23.27 | 172 |
| Navarra, Comunidad Foral de | 51,635 | 941 | 202,336 | 4,100 | 3.93 | 463 | 3,676 | 15.16 | 22.41 | 615 |
| País Vasco | 32,292 | 2,651 | 93,397 | 8,137 | 2.91 | 151 | 1,650 | 16.54 | 24.57 | 205 |
| Rioja, La | 14,536 | 461 | 38,357 | 794 | 2.61 | 77 | 794 | 13.30 | 23.00 | 91 |
| Ceuta | - | - | - | - | - | - | - | - | - | - |
| Melilla | - | - | - | - | - | - | - | - | - | - |

¹ To facilitate the comparability between data from different Autonomous Communities (and because of the different regulation and different characteristics), a group called rural house has been created, with those accommodations with similar typology (location, capacity, etc...).

The variables included in the previous table have been estimated with that type of establishments.

The variables shown in the table have been estimated with the type of accommodation under rural tourist accommodation.

² Annual average and weighted average per places or rooms

7. Travellers and overnight stays by country of residence

| Results by countries | Travellers | | Overnight stays | |
|---|------------|--------|-----------------|--------|
| | Total | % | Total | % |
| TOTAL | 2,070,636 | 100.00 | 6,282,936 | 100.00 |
| Residents Spain | 1,888,640 | 91.21 | 5,559,402 | 88.48 |
| Residents abroad | 181,997 | 8.79 | 723,534 | 11.52 |
| Total Residents abroad | 181,997 | 100.00 | 723,534 | 100.00 |
| Total Residents in EU (excluding Spain) | 116,301 | 63.90 | 511,248 | 70.66 |
| - Germany | 35,071 | 19.27 | 182,927 | 25.28 |
| - Belgium | 7,690 | 4.23 | 35,881 | 4.96 |
| - France | 34,625 | 19.03 | 128,871 | 17.81 |
| - Italy | 5,450 | 2.99 | 21,279 | 2.94 |
| - Netherlands | 11,299 | 6.21 | 52,190 | 7.21 |
| - Portugal | 6,532 | 3.59 | 27,438 | 3.79 |
| United Kingdom | 19,982 | 10.98 | 86,538 | 11.96 |
| Switzerland | 3,563 | 1.96 | 17,073 | 2.36 |
| Other European countries | 19,889 | 10.93 | 81,680 | 11.29 |
| United States of America | 2,857 | 1.57 | 10,379 | 1.43 |
| Other countries | 35,040 | 19.25 | 79,276 | 10.96 |

8. Evolution of year 2020: Number of travellers, overnight stays and average stay

| | Number of travellers | | | Number of overnight stays | | | Average stay |
|-----------|----------------------|--------------------|------------------|---------------------------|--------------------|------------------|--------------|
| | Total | Residents in Spain | Residents abroad | Total | Residents in Spain | Residents abroad | |
| TOTAL | 2,070,637 | 1,888,639 | 181,998 | 6,282,936 | 5,559,402 | 723,534 | 3.03 |
| January | 159,625 | 140,182 | 19,442 | 362,951 | 285,432 | 77,519 | 2.27 |
| February | 224,808 | 198,583 | 26,225 | 487,464 | 384,276 | 103,188 | 2.17 |
| March | 55,277 | 44,801 | 10,477 | 148,818 | 99,676 | 49,142 | 2.69 |
| April | 0 | 0 | 0 | 0 | 0 | 0 | 0.00 |
| May | 8,088 | 7,990 | 98 | 36,494 | 33,794 | 2,701 | 4.51 |
| June | 116,719 | 113,969 | 2,750 | 279,292 | 270,453 | 8,838 | 2.39 |
| July | 430,092 | 387,426 | 42,666 | 1,462,784 | 1,297,315 | 165,469 | 3.40 |
| August | 531,755 | 489,507 | 42,248 | 2,087,854 | 1,906,691 | 181,163 | 3.93 |
| September | 257,401 | 239,837 | 17,564 | 663,705 | 609,382 | 54,322 | 2.58 |
| October | 161,806 | 150,045 | 11,762 | 398,606 | 359,428 | 39,179 | 2.46 |
| November | 39,817 | 36,638 | 3,179 | 127,705 | 109,861 | 17,844 | 3.21 |
| December | 85,248 | 79,662 | 5,586 | 227,263 | 203,094 | 24,169 | 2.67 |

9. Evolution of year 2020: Open rural establishments, bed-places, occupancy rates and employed personnel

| | Estimated open rural establishments ¹ | Estimated bed-places ¹ | Occupancy rate ¹ | | | Employed personnel ¹ |
|-----------|--|-----------------------------------|-----------------------------|--------------------------|-------------|---------------------------------|
| | | | Of bed-places | Of bed-places at weekend | Of bedrooms | |
| TOTAL | 11,668 | 110,107 | 15.45 | 23.74 | 20.50 | 17,605 |
| January | 15,500 | 143,809 | 8.13 | 15.78 | 10.83 | 21,810 |
| February | 15,403 | 144,770 | 11.59 | 24.60 | 15.36 | 21,957 |
| March | 8,068 | 76,273 | 6.28 | 12.73 | 9.21 | 21,670 |
| April | 0 | 0 | 0 | 0 | 0 | 0 |
| May | 2,103 | 18,644 | 6.31 | 7.78 | 12.19 | 4,496 |
| June | 9,433 | 85,722 | 10.84 | 23.42 | 14.61 | 14,441 |
| July | 16,040 | 156,146 | 30.07 | 41.23 | 38.10 | 23,991 |
| August | 16,358 | 160,907 | 41.59 | 48.41 | 52.13 | 24,819 |
| September | 16,252 | 156,905 | 14.07 | 26.48 | 19.13 | 23,077 |
| October | 15,207 | 143,925 | 8.92 | 16.00 | 12.81 | 21,141 |
| November | 12,879 | 117,766 | 3.61 | 5.60 | 6.36 | 17,006 |
| December | 12,779 | 116,415 | 6.29 | 9.14 | 9.99 | 16,857 |

¹ Annual average and weighted average per places or rooms

Tourist Accommodation Occupancy Survey Hostels Occupancy Survey (HOS)

Year 2020

Provisional data

1st February 2021

1. Travellers, overnight stays and average stay by Autonomous Cities and Communities

| Autonomous cities and communities | Travellers | | | Overnight stays | | | Average stay |
|-----------------------------------|------------|--------------------|------------------|-----------------|--------------------|------------------|--------------|
| | Total | Residents in Spain | Residents abroad | Total | Residents in Spain | Residents abroad | |
| TOTAL | 233,031 | 171,683 | 61,348 | 750,021 | 538,684 | 211,338 | 3.22 |
| Andalucía | - | - | - | - | - | - | - |
| Aragón | - | - | - | - | - | - | - |
| Asturias, Principado de | - | - | - | - | - | - | - |
| Balears, Illes | - | - | - | - | - | - | - |
| Canarias | - | - | - | - | - | - | - |
| Cantabria | - | - | - | - | - | - | - |
| Castilla y León | 9,368 | 8,816 | 550 | 27,284 | 25,494 | 1,789 | 2.91 |
| Castilla - La Mancha | 4,668 | 4,415 | 253 | 18,856 | 18,554 | 302 | 4.04 |
| Cataluña | - | - | - | - | - | - | - |
| Comunitat Valenciana | - | - | - | - | - | - | - |
| Extremadura | 2,166 | 2,130 | 37 | 6,334 | 6,294 | 41 | 2.92 |
| Galicia | 3,469 | 2,675 | 794 | 11,309 | 10,370 | 938 | 3.26 |
| Madrid, Comunidad de | 13,140 | 6,217 | 6,922 | 27,677 | 11,464 | 16,214 | 2.11 |
| Murcia, Región de | 6,251 | 5,120 | 1,132 | 17,004 | 13,130 | 3,872 | 2.72 |
| Navarra, Comunidad Foral de | 4,871 | 3,964 | 908 | 17,366 | 15,989 | 1,375 | 3.57 |
| País Vasco | - | - | - | - | - | - | - |
| Rioja, La | 1,414 | 1,341 | 73 | 4,276 | 4,136 | 141 | 3.02 |
| Ceuta | - | - | - | - | - | - | - |
| Melilla | - | - | - | - | - | - | - |
| Annual rate | -78.57 | -76.14 | -83.31 | -74.90 | -73.50 | -77.89 | 17.12 |

2. Open establishments, capacity, occupancy and number of staff by autonomous cities and communities

| Autonomous cities and communities | Capacity | | Occupancy rate | | Employed personnel ¹ |
|-----------------------------------|--|-----------------------------------|----------------------------|---------------------------------------|---------------------------------|
| | Estimated open establishments ¹ | Estimated bed-places ¹ | Of bed-places ² | Of bed-places at weekend ² | |
| TOTAL | 116 | 12,621 | 16.28 | 19.08 | 958 |
| Andalucía | - | - | - | - | - |
| Aragón | - | - | - | - | - |
| Asturias, Principado de | - | - | - | - | - |
| Balears, Illes | - | - | - | - | - |
| Canarias | - | - | - | - | - |
| Cantabria | - | - | - | - | - |
| Castilla y León | 11 | 1,020 | 7.39 | 7.51 | 103 |
| Castilla - La Mancha | 9 | 1,089 | 4.71 | 6.47 | 29 |
| Cataluña | - | - | - | - | - |
| Comunitat Valenciana | - | - | - | - | - |
| Extremadura | 4 | 257 | 6.69 | 12.22 | 15 |
| Galicia | 3 | 344 | 8.96 | 9.29 | 37 |
| Madrid, Comunidad de | 3 | 301 | 25.31 | 30.86 | 76 |
| Murcia, Región de | 3 | 317 | 15 | 20 | 17 |
| Navarra, Comunidad Foral de | 4 | 290 | 16.42 | 10.98 | 31 |
| País Vasco | - | - | - | - | - |
| Rioja, La | 4 | 228 | 5.13 | 8.35 | 8 |
| Ceuta | - | - | - | - | - |
| Melilla | - | - | - | - | - |
| Annual rate | -52.13 | -50.58 | -47.41 | -44.70 | -47.96 |

¹ Annual average.

² Weighted average per bed-places.

3. Travellers and overnight stays by countries of residence

| Countries | Travellers | | Overnight stays | | Average stay |
|---|------------|--------|-----------------|--------|--------------|
| | Total | % | Total | % | |
| TOTAL | 233,031 | 100.00 | 750,021 | 100.00 | 3.22 |
| Residents in Spain | 171,683 | 73.67 | 538,684 | 71.82 | 3.14 |
| Residents abroad | 61,348 | 26.33 | 211,338 | 28.18 | 3.44 |
| TOTAL residents abroad | 61,348 | 100.00 | 211,338 | 100.00 | 3.44 |
| TOTAL residents in E.U. (excluding Spain) | 31,558 | 51.44 | 88,389 | 41.82 | 2.80 |
| - Germany | 5,736 | 9.35 | 17,971 | 8.50 | 3.13 |
| - Belgium | 1,205 | 1.96 | 3,207 | 1.52 | 2.66 |
| - France | 10,120 | 16.50 | 26,735 | 12.65 | 2.64 |
| - Italy | 4,360 | 7.11 | 13,483 | 6.38 | 3.09 |
| - Netherlands | 2,186 | 3.56 | 5,737 | 2.71 | 2.62 |
| - Portugal | 1,046 | 1.71 | 2,274 | 1.08 | 2.17 |
| - United Kingdom | 4,802 | 7.83 | 14,793 | 7.00 | 3.08 |
| Switzerland | 842 | 1.37 | 2,114 | 1.00 | 2.51 |
| Other European countries | 10,495 | 17.11 | 33,692 | 15.94 | 3.21 |
| United States of America | 3,606 | 5.88 | 9,227 | 4.37 | 2.56 |
| Other countries | 16,949 | 27.63 | 82,104 | 38.85 | 4.84 |

HOS (TABLES ANNEX) - YEAR 2020. Provisional data (2/3)

4. Evolution in the year 2020: travellers, overnight stays and average stay

| Months | Travellers | | | Overnight stays | | | Average stay |
|--------------|------------|--------------------|------------------|-----------------|--------------------|------------------|--------------|
| | Total | Residents in Spain | Residents abroad | Total | Residents in Spain | Residents abroad | |
| TOTAL | 233,031 | 171,683 | 61,348 | 750,021 | 538,684 | 211,338 | 3.22 |
| January | 40,034 | 24,748 | 15,286 | 119,280 | 71,551 | 47,729 | 2.98 |
| February | 62,011 | 42,936 | 19,074 | 168,330 | 114,125 | 54,205 | 2.71 |
| March | 25,006 | 17,982 | 7,024 | 80,288 | 53,009 | 27,279 | 3.21 |
| April | 0 | 0 | 0 | 0 | 0 | 0 | 0 |
| May | 390 | 110 | 280 | 8,310 | 1,645 | 6,666 | 21.29 |
| June | 4,338 | 3,772 | 567 | 18,005 | 12,008 | 5,997 | 4.15 |
| July | 25,156 | 20,916 | 4,239 | 101,153 | 84,993 | 16,159 | 4.02 |
| August | 35,855 | 30,027 | 5,828 | 113,454 | 96,462 | 16,992 | 3.16 |
| September | 16,177 | 13,103 | 3,075 | 44,034 | 34,696 | 9,338 | 2.72 |
| October | 13,108 | 10,462 | 2,646 | 44,958 | 35,286 | 9,672 | 3.43 |
| November | 5,766 | 3,887 | 1,879 | 26,680 | 17,583 | 9,098 | 4.63 |
| December | 5,190 | 3,740 | 1,450 | 25,529 | 17,326 | 8,203 | 4.92 |

5. Evolution in the year 2020: establishments, capacity, occupancy and employed personnel

| Months | Capacity | | Occupancy rate | | Employed personnel ¹ |
|--------------|--|-----------------------------------|----------------------------|---------------------------------------|---------------------------------|
| | Estimated open establishments ¹ | Estimated bed-places ¹ | Of bed-places ² | Of bed-places at weekend ² | |
| TOTAL | 116 | 12,621 | 16.28 | 19.08 | 958 |
| January | 193 | 19,689 | 19.54 | 23.24 | 1,449 |
| February | 208 | 21,756 | 26.68 | 31.80 | 1,535 |
| March | 110 | 12,378 | 20.92 | 24.84 | 1,492 |
| April | 0 | 0 | 0 | 0 | 0 |
| May | 18 | 2,696 | 9.94 | 6.95 | 105 |
| June | 54 | 5,792 | 10.36 | 12.77 | 578 |
| July | 164 | 18,119 | 18.01 | 17.71 | 1,436 |
| August | 165 | 17,999 | 20.33 | 21.01 | 1,346 |
| September | 142 | 15,463 | 9.49 | 14.65 | 1,004 |
| October | 134 | 14,572 | 9.95 | 13.21 | 979 |
| November | 108 | 11,946 | 7.44 | 9.70 | 793 |
| December | 100 | 11,036 | 7.46 | 9.58 | 775 |

¹ Annual average.

² Weighted average per bed-places.

HOLIDAY DWELLING PRICE INDEX (HDPI)

Year 2020

Provisional data

1st February 2021

Annual variation rate by rates

| | Annual variation rate |
|------------------------------------|--------------------------|
| TOTAL | -4.42 |
| Normal | -5.88 |
| Weekend | -7.71 |
| Tour-operators and travel agencies | -2.33 |

Annual variation rate by modalities

| | Annual variation rate |
|-------------------------|--------------------------|
| TOTAL | -4.42 |
| Studio | -3.34 |
| Dwellings 2/4 bedplaces | -4.48 |
| Dwellings 4/6 bedplaces | -4.78 |

The Cumulative annual rates of HDPI, have been calculated as annual average rates of HDPI, weighted per number of apartments of every month.

Tourist Campsite Price Index (TCSPI). 2002 Base

Year 2020

Provisional data

1st February 2021

Annual variation rate by rates

| | Annual variation rate |
|--|--------------------------|
| TOTAL | 1.87 |
| Normal rate | 2.14 |
| Special rate for stays up to one month | 1.35 |
| Special rate for stays longer than one month | 3.68 |
| Bungalow rate ¹ | 1.21 |

¹ 2014 Base

Annual variation rate by categories

| | Annual variation rate |
|------------------|--------------------------|
| TOTAL | 1.87 |
| Luxury and first | 2.66 |
| Second | 1.02 |
| Third | 2.36 |

The Cumulative annual rates of TCSPI have been calculated as annual average rates of TCSPI, weighted per number of pitches of every month.

TCSPI (ANNEX OF TABLES) - Annual 2020. Provisional data

Rural Tourism Accommodation Price Index (RTAPI)

Year 2020

Provisional data

1st February 2021

Annual variation rates by Autonomous Cities and Communities

| | Variation Rate Annual |
|-----------------------------|--------------------------|
| TOTAL | -0.96 |
| Andalucía | -1.14 |
| Aragón | 3.11 |
| Asturias, Principado de | 1.97 |
| Balears, Illes | -7.49 |
| Canarias | -0.59 |
| Cantabria | 3.65 |
| Castilla y León | -0.18 |
| Castilla - La Mancha | -1.80 |
| Cataluña | 1.05 |
| Comunitat Valenciana | 0.01 |
| Extremadura | -1.39 |
| Galicia | -0.34 |
| Madrid, Comunidad de | -0.16 |
| Murcia, Región de | 0.92 |
| Navarra, Comunidad Foral de | 1.85 |
| País Vasco | 1.56 |
| Rioja, La | 1.69 |
| Ceuta | - |
| Melilla | - |

Annual variation rate by rates

| | Variation Rate Annual |
|--------------|--------------------------|
| TOTAL | -0.96 |
| Normal | -1.09 |
| Weekend | -0.82 |

Annual variation rate rent modality

| | Variation Rate Annual |
|--|--------------------------|
| TOTAL | -0.96 |
| Shared use (in case of per room rent modality) | -3.20 |
| Full use (rent of entire dwelling) | 0.08 |

The Cumulative annual rates of RTPAI have been calculated as annual average rates of RTPAI per number of rooms-establishments every month.