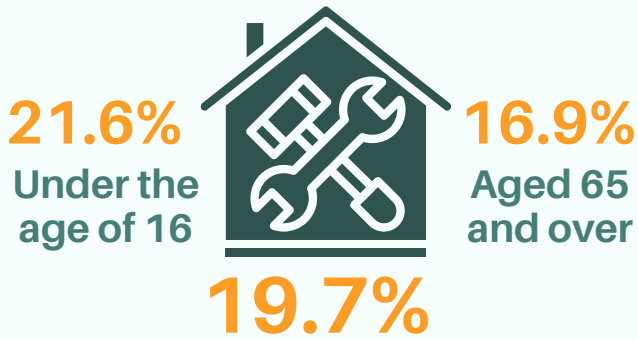




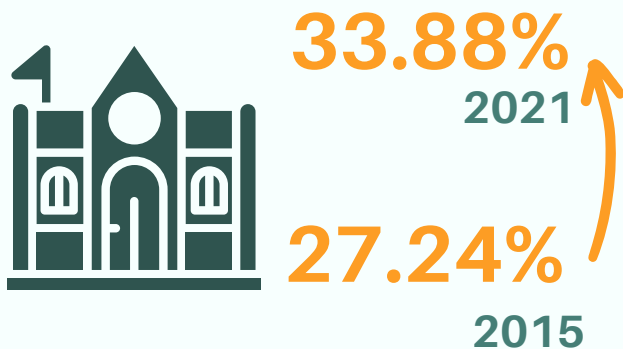
POPULATION in homes with certain **HOUSEHOLD DEFICITS** in 2020



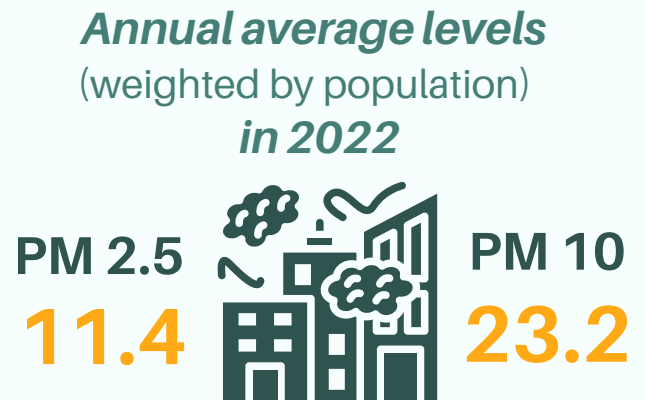
DEATHS caused by **DISASTERS** per 100,000 inhabitants



PER CAPITA EXPENDITURE on **HERITAGE PROTECTION** and **CONSERVATION**



FINE PARTICLES WEIGHTED in **CITIES**



Municipal SOLID WASTE COLLECTED as a percentage of the total (kilograms/inhabitant/year) in 2021



Total	Mixed	Paper and cardboard	Glass	Mixed containers and packaging
478.7	360.7	31.5	18.5	18.8