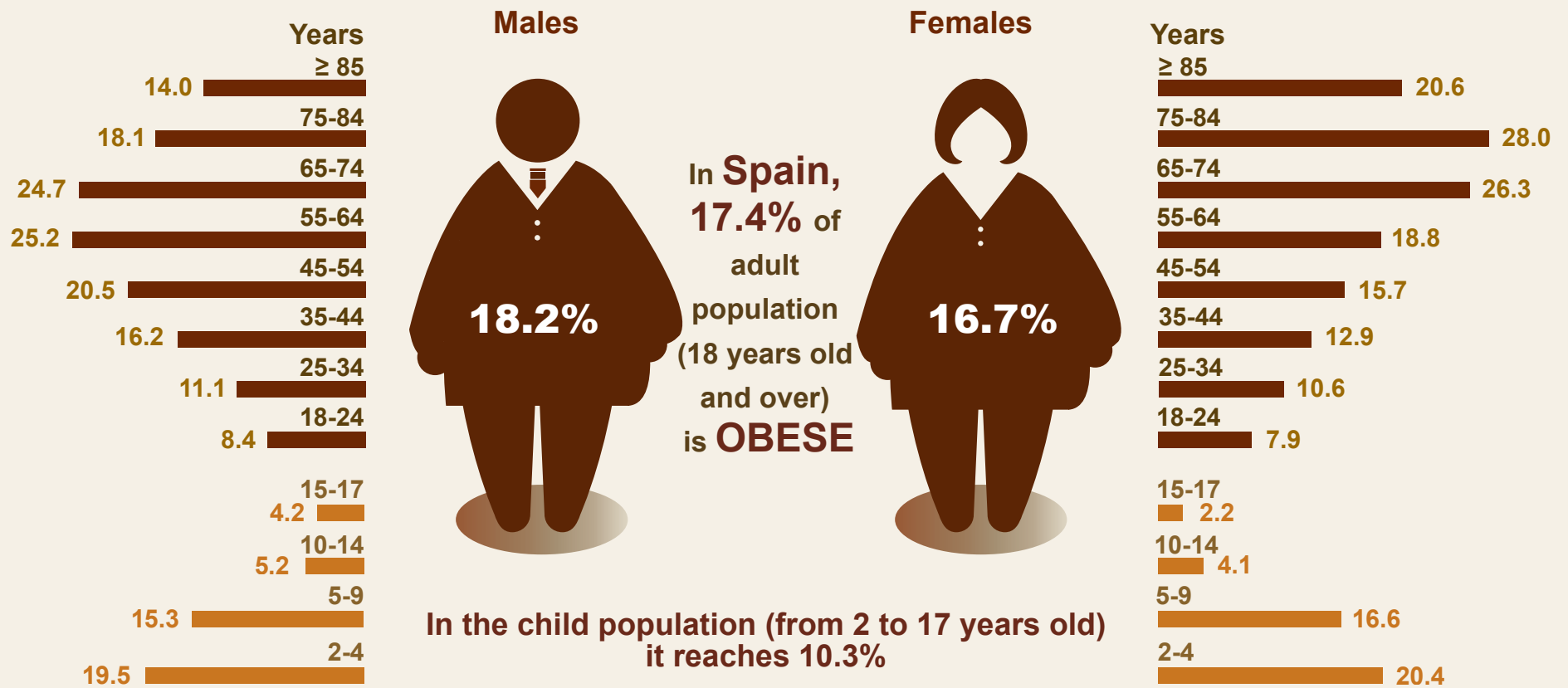


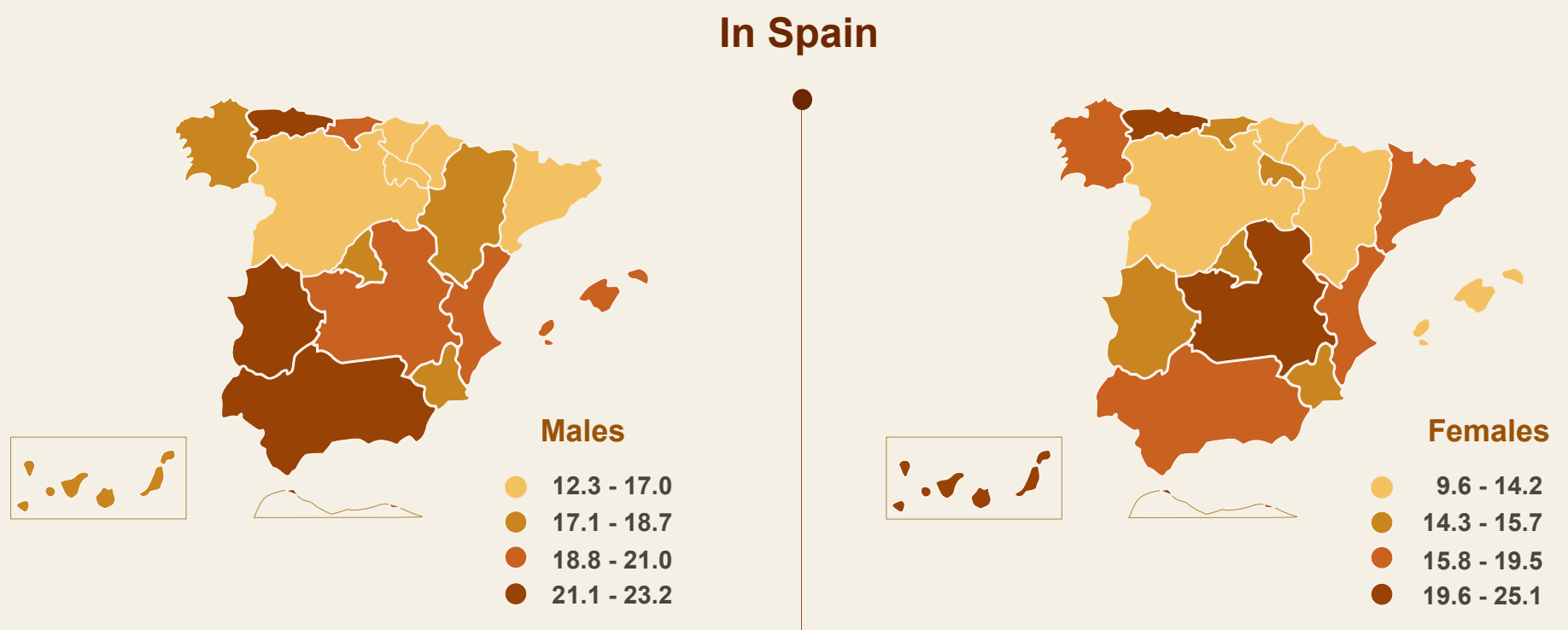
OBESITY. Spain and the EU. 2017

World Obesity Day — 12th of November

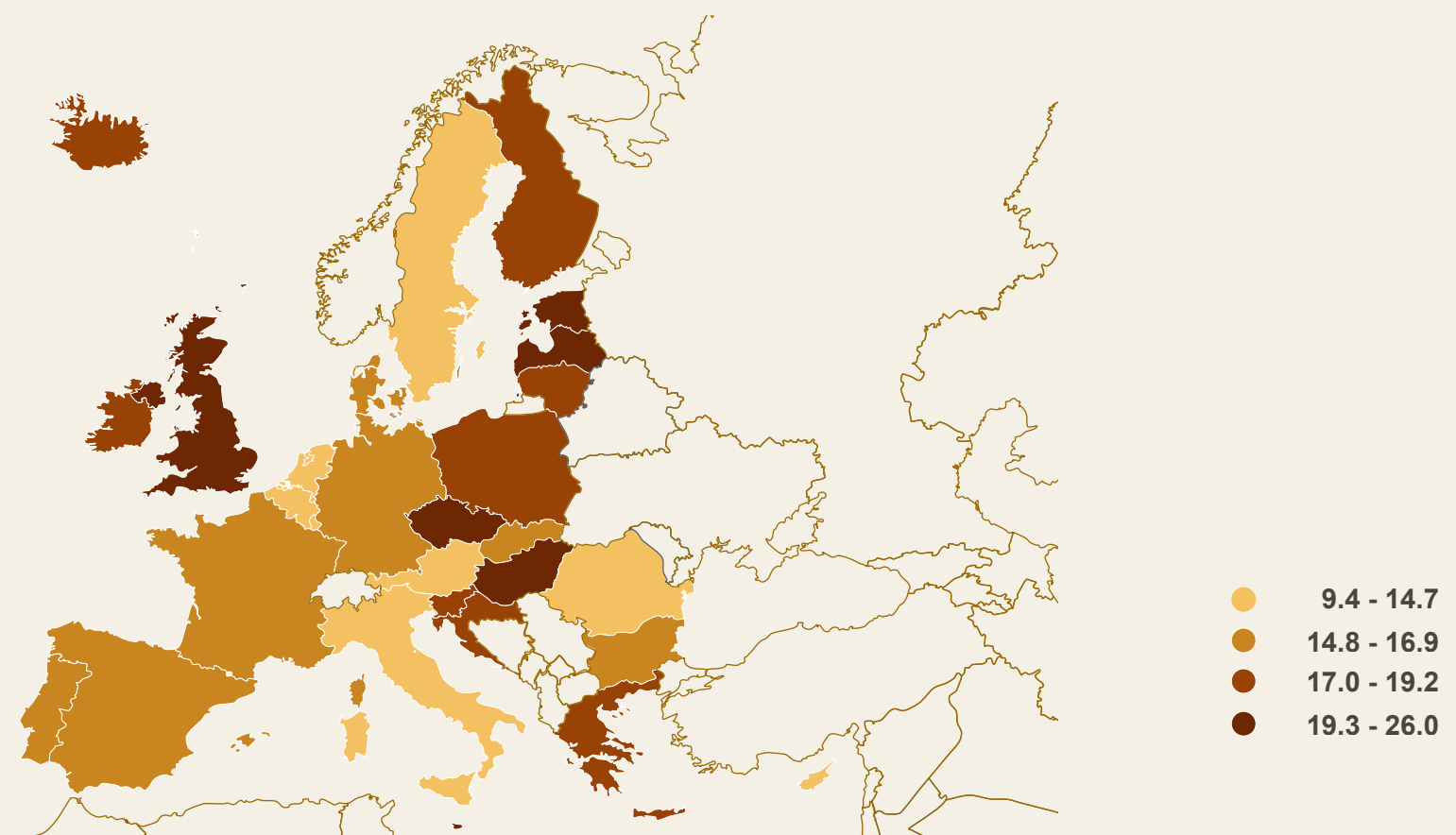
► % people with obesity



► % obese adult population (18 years old and over)



In the EU



Note: [Body Mass Index (BMI) = [weight (Kg) / height (m²)]. A person is obese if their BMI ≥ 30.
EU data from 2014 (latest available data).

Sources: National Health Survey 2017. MSCBS e INE - Spain
European Health Interview Survey 2014. Eurostat

November 2018