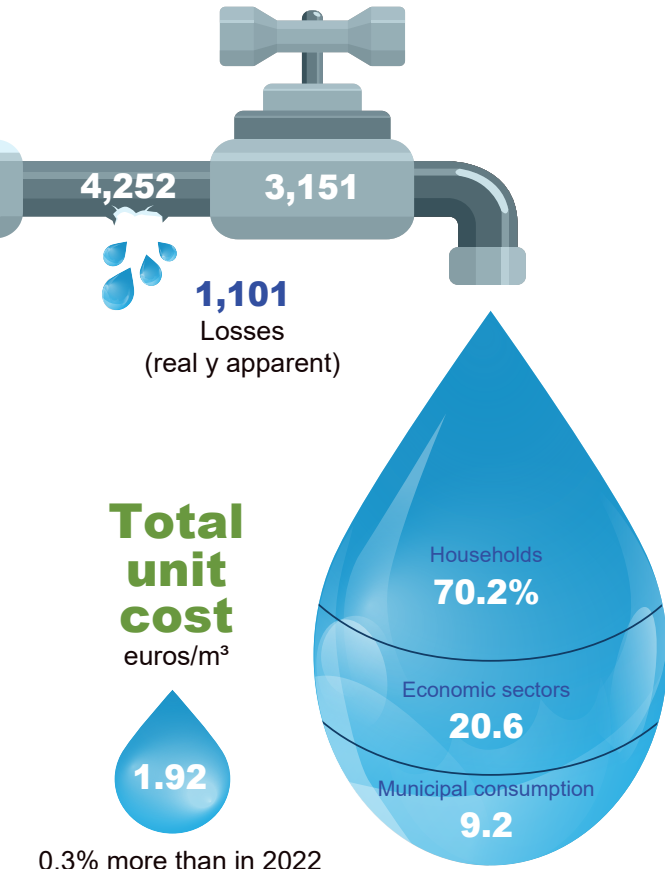




WATER SUPPLY AND SEWERAGE 2022

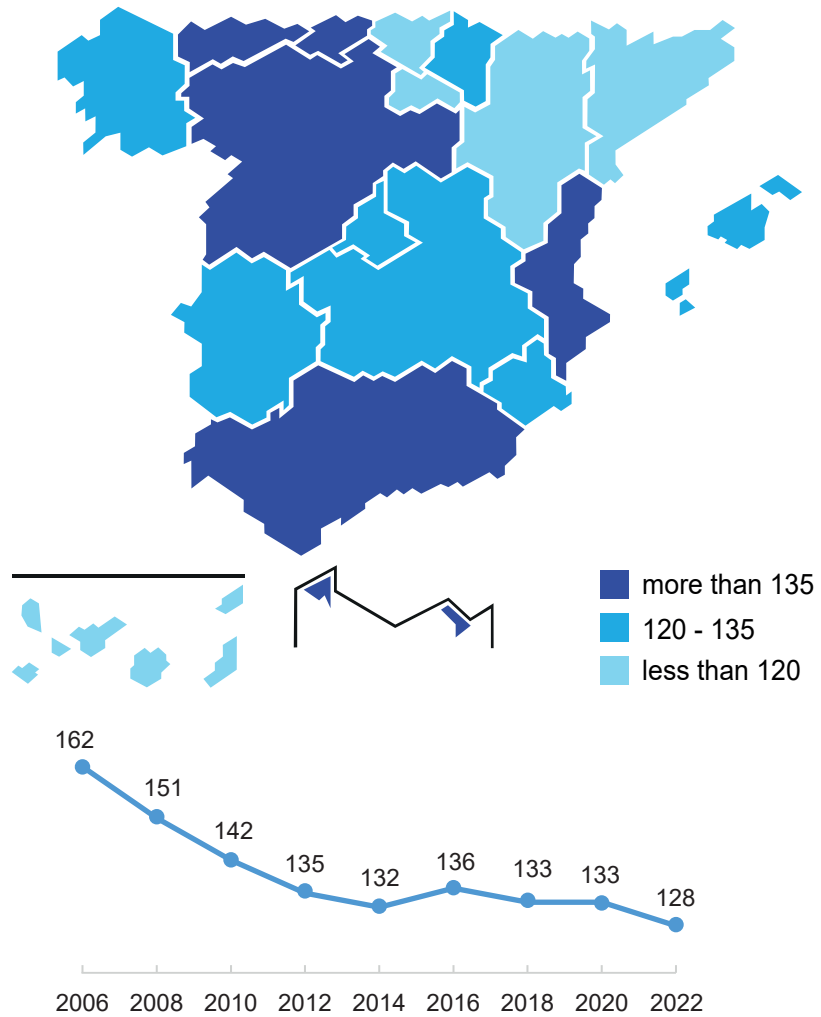
Network supply

Million m³



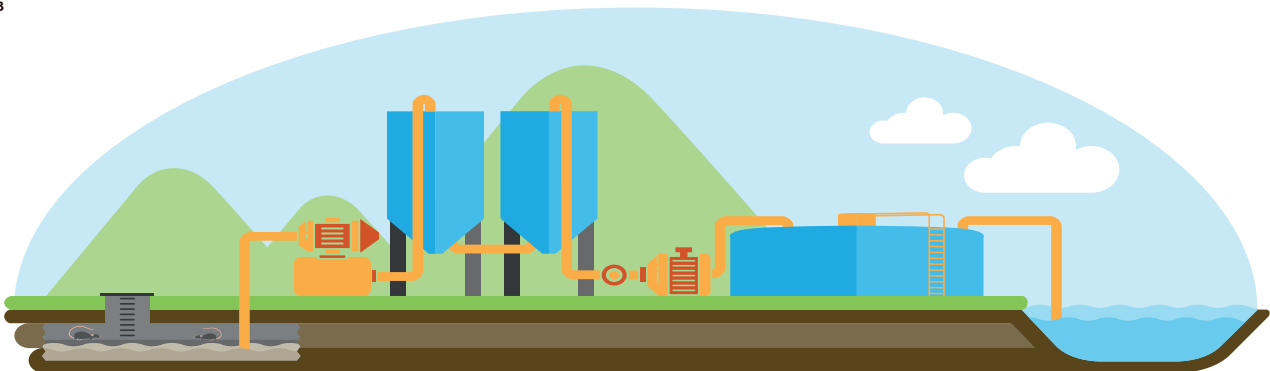
Households consumption

Litres / inhabitants / day



Wastewater treatment

Million m³



Treated
15,428

- Wastewater from sewerage networks
- Rainwater (urban runoff)

Reused
1,239

Treated wastewater can be reused in agriculture, industry, watering gardens and leisure sports areas, cleaning of sewage and streets, etc.